

MAX LEGROOM BIG & TALL SEAT ADAPTER INSTALL

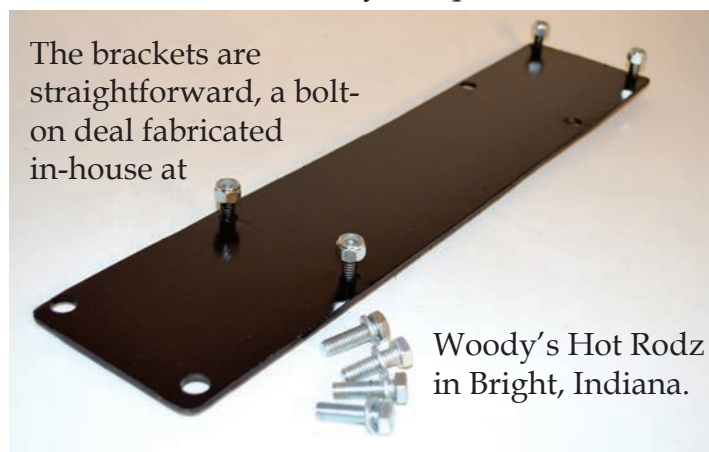
WORDS BY IAN BOWMAN | PHOTOS BY WOODY'S HOT RODZ

Whether you're 6'+ like I am, or you've got a little more around the middle than most folks, the factory seating position in a Tri-Five can be...well....less than ideal. For us long legged folks, even with the seat back, leg space is minimal. Simply put, they just weren't designed for guys of our stature. For those bigger around the middle, clearance to the steering wheel is definitely at a premium, especially if the original 18" wheel is in play. For years, the easy answer was a set of bucket seats; for many, this isn't the look they want, or the driving experience they prefer. If a bench was wanted, and more room was required, an expensive aftermarket bench seat was the go to. But just as the buckets, it wasn't the look everyone was after, even if upholstered in factory style.

Thankfully, Woody's Hot Rodz has the answer with the Dil's Big and Tall seat relocation



Note our factory seat position.

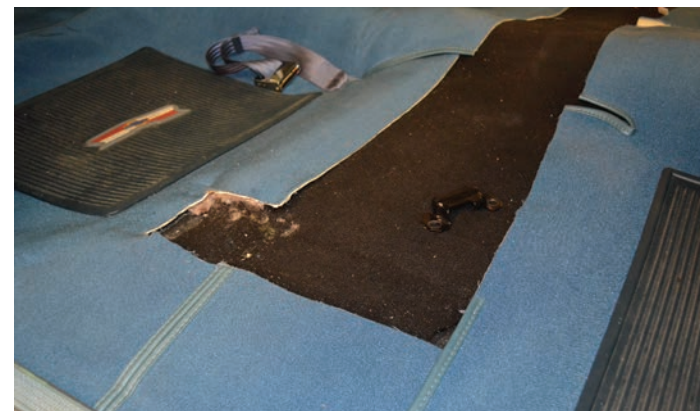


The brackets are straightforward, a bolt-on deal fabricated in-house at

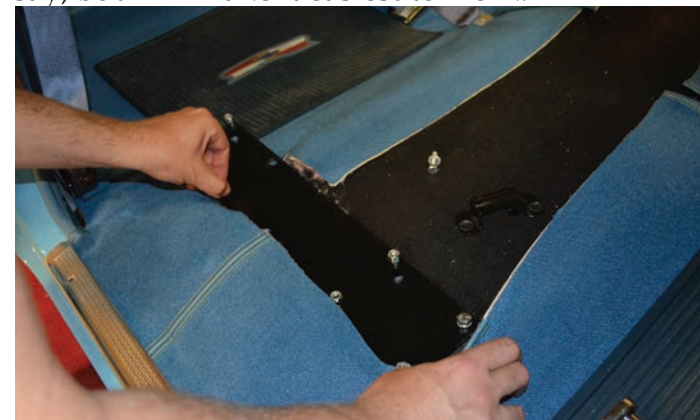
Woody's Hot Rodz in Bright, Indiana.

brackets. These bolt-in brackets relocate the front seat back a leg-stretching 4" without modifying your seat or floor pan even in the slightest!

At 6'4" and 225lbs, this isn't the most comfortable fit for me in the world, especially for long distance traveling, and I know I'm not alone!



Step one is remove the front seat. Four bolts on each side to remove both the front hold down and the rear of the seat, and the seat comes out giving you easy access to all floor mounting points. Helpful tip here: Removing your front seat totally and completely isn't required, per say, but will make it easiest to work.

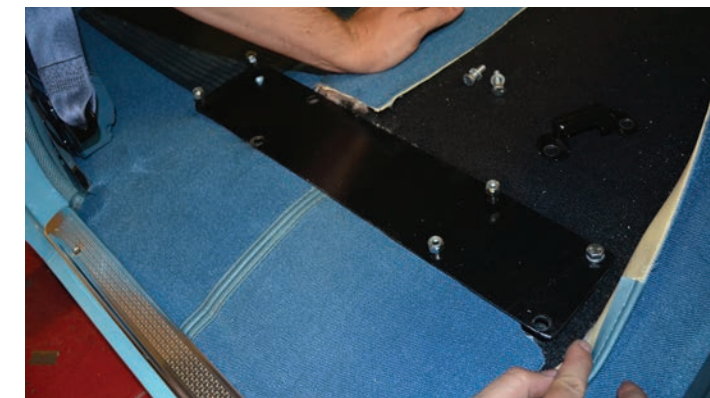


With your seat out of the way, it'll be evident very quickly just how easy these brackets are to install. All holes line up with the factory mounting points, as they should.

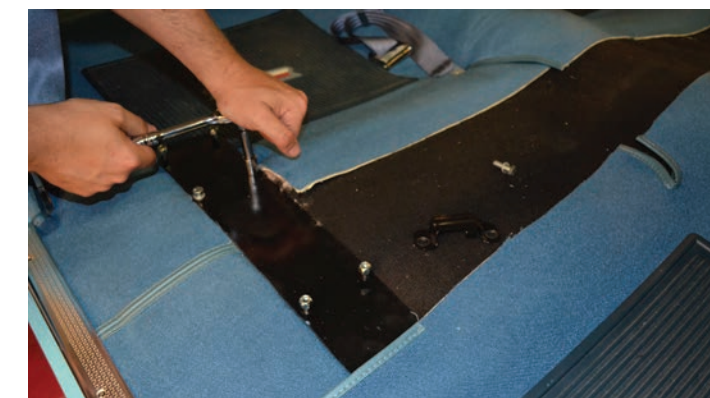


Only modification that may be required will be some trimming of the carpet. Being as the brackets are wider than the factory clamshell-type clamps, this may be required to get them to lay evenly against the floor and provide full access to the mounting holes.

GIVE WOODY'S A CALL AT
855.567.1957
OR VISIT
WOODYSHOTRODZ.COM
FOR ALL YOUR 55-56-57 PARTS NEEDS



With your carpet trimmed, you can lay the bracket down, and bolt it into place just like you would your factory seat clamps.



Your carpet will cover your front bolt holes, providing a finished look and making the bracket basically invisible. Rear bolts down just as the front.



From here, you can LOOSELY install your front seat clamps. This will allow you to slip your seat into place, and not fight to hold it down, as it will inherently try to flip backwards due to the weight.

American Tri-Five Volume 7 : Issue 5 - June 2022



Once your seat is slipped into the clamp, and on the welded studs in the rear, you can snug the clamps up some, just to keep the seat from moving around.



Use the provided lock nuts to tighten the seat to the welded studs at the rear of the bracket. Not having to fight a thru-bolt type setup makes this an easy operation all around.



With the seat installed and the shells back on, a difference is already noticeable of more room up front.



Compared to the previous page, the difference is easily noticeable.....



....and with a driver in place, it becomes even more evident. There's plenty of room to stretch your legs for long distance traveling, or even more comfortable jaunts around town. For the bigger than average fella, whether vertically or horizontally, these brackets are a must have! 