

Northern Prawn Fishery

Austral Fisheries

Skull Island

AUSTRAL HUNTER



Austral Fisheries



- **Who are we?**

- Austral Fisheries are a wild seafood producer.
- Patagonian toothfish (subantarctic ocean).
- Prawns (NPF).
- Goldband Snapper (Northern Territory).
- Various seafood trading.

- **Northern Prawn Fishery**

- Own and operate 11 prawn trawlers in the NPF.
- Engineering team (maintenance and repairs).
- Fleet team (Fishing related).
- Crews at sea.



The Northern Prawn Fishery

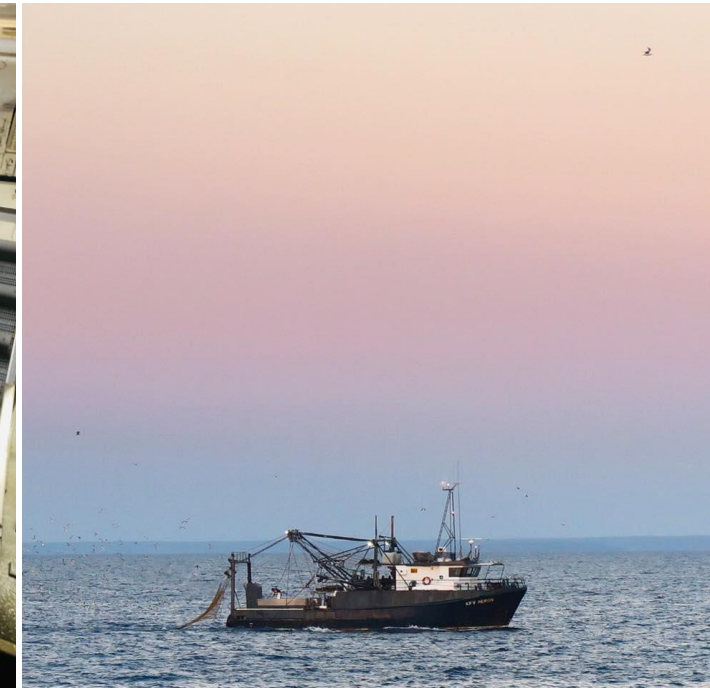
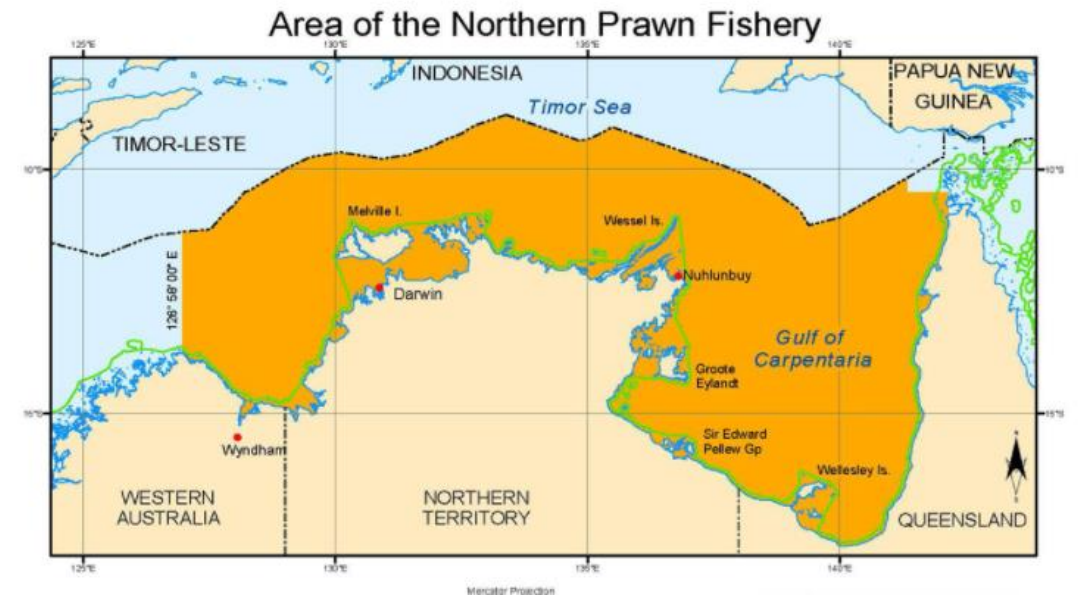
- **Size and Location**

- Australia's most valuable prawn fishery (\$120mil).
- 6000km of coastline (Cape York – Kimberley's)
- 52 Vessels
- 4,000 – 8,500T of prawns per year

- **Seasons**

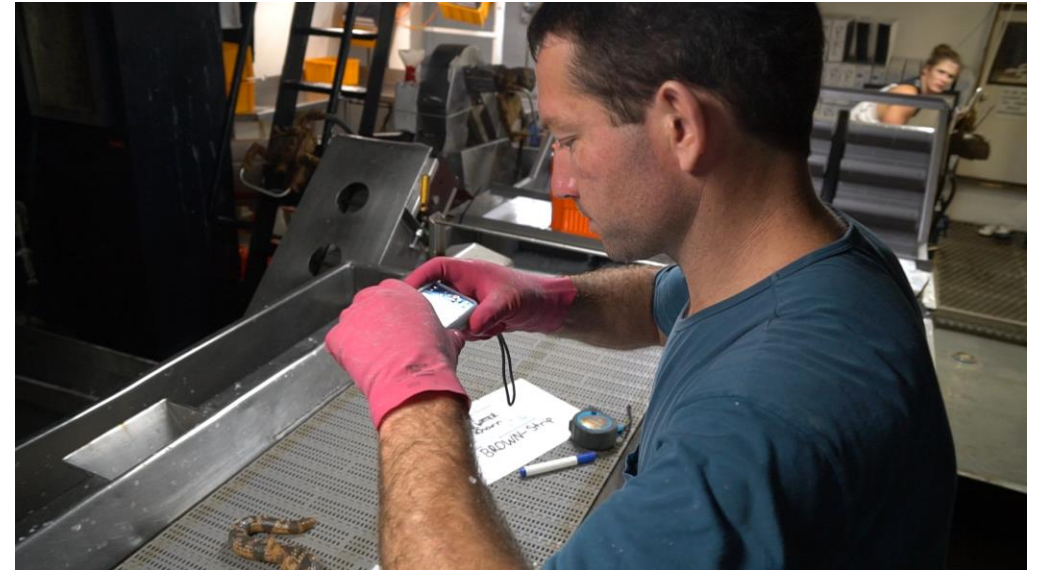
- Banana Prawn (April 1st – June 15th)
- Tiger Prawn (August 1st – November 30th)

Target	By-product
White banana	Blue endeavour
Red legged banana	Red endeavour
Grooved tiger	Black tiger (leader prawn)
Brown tiger	



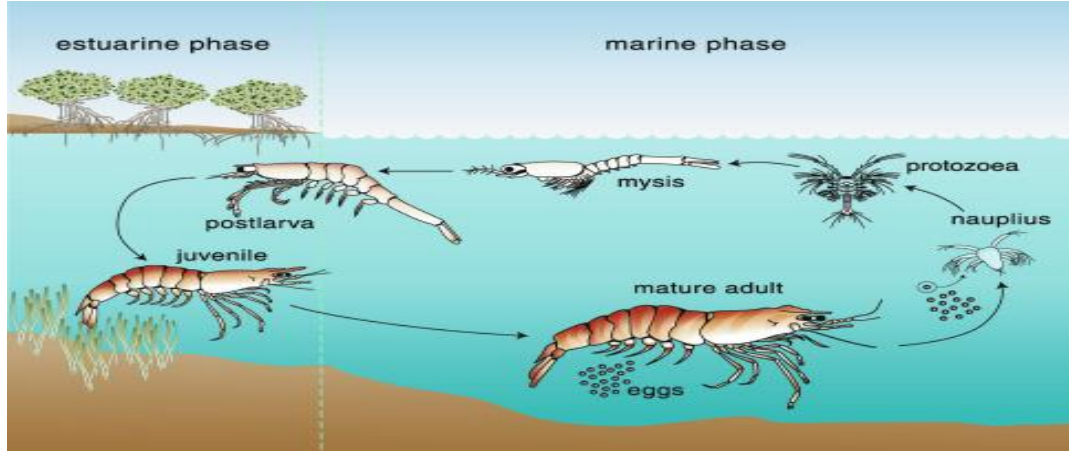
Ensuring Sustainability

- **MSC Certified (2012)**
 - Global standard for wild fisheries
 - First MSC certified tropical prawn fishery
 - Lots of hard work to maintain
 - Helps consumers make the right choice
- **Limited seasons**
 - 6 months fishing
- **Spatial area management and closures**
 - Sensitive areas
 - Nursery's
 - Area's that are struggling
- **Ecosystem based management**
 - Stock assessments
 - Maximum Economic Yield (MEY) (better than MSY)
 - Ecologic Risk Assessments for all species
 - Backed by science
- **Bycatch**
 - Bycatch Reduction Devices
 - Crew Member Observer Programs
 - Research



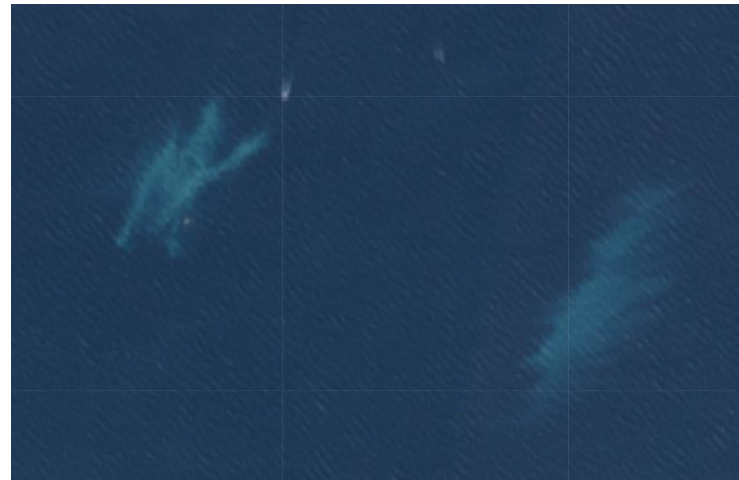
Banana Prawns

- **Lifecycle and spawning**



- **Fishing**

- Banana prawns group together to create “mud boils”.
- Spotter planes are used to locate schools.
- Vessels can catch up to 10T per day.
- Highly competitive, exciting fishery.
- 24hr fishing.
- Left over prawns spawn and replenish the fishing grounds for next year.



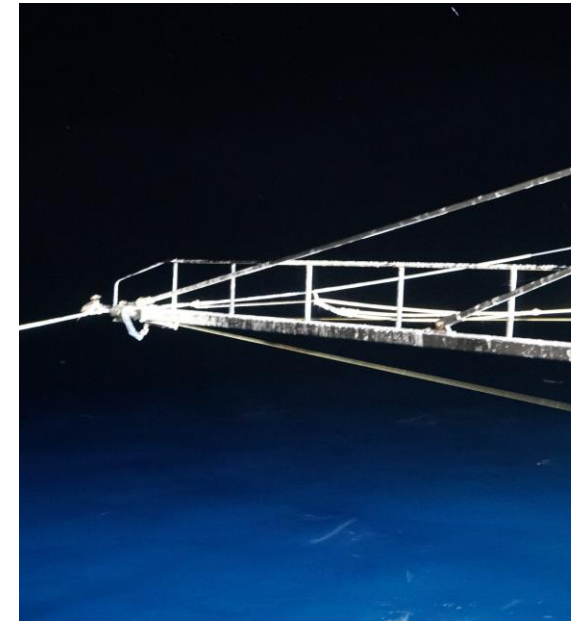
Tiger Prawns

- **Lifecycle and spawning**



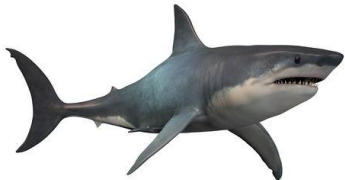
- **Fishing**

- Tiger prawns disperse into clusters across the ocean floor.
- Prefer muddy substrate near reefs and shoals.
- Vessels catch around 500kg per night.
- General trawl (line fishing).
- High levels of bycatch.



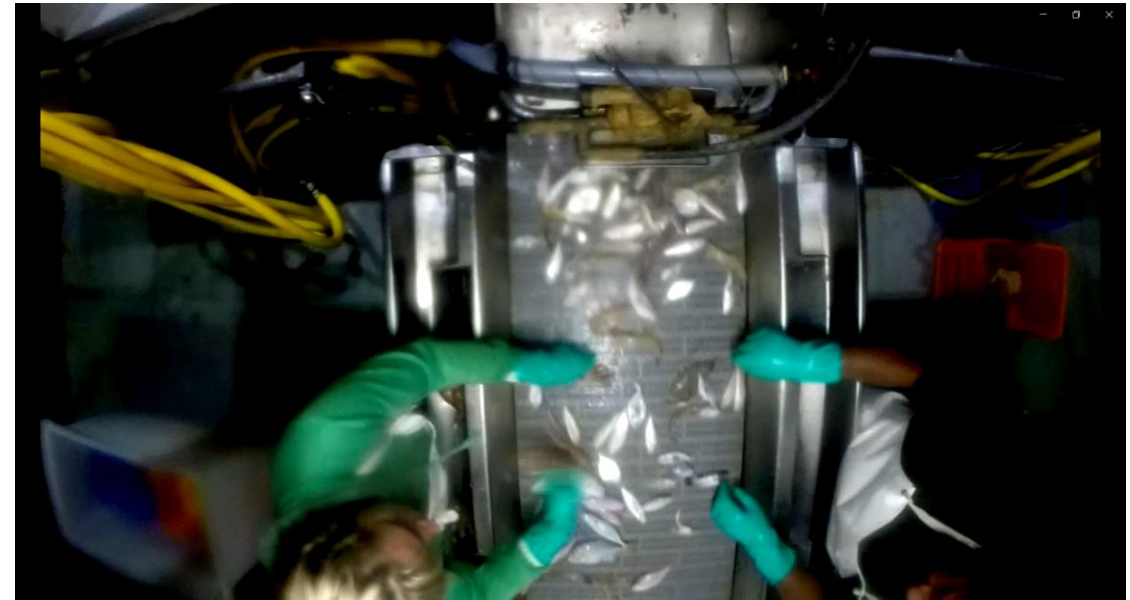
Bycatch – Threatened, Endangered or Protected (TEPs)

- EPBC Act identifies species
- We have to act on it
 - Data collection
 - Research
 - Mitigation
- **Turtle Excluder Devices (TED)**
 - A grid that prevents large catch from entering the codend.
 - Been in the industry for 21 years.



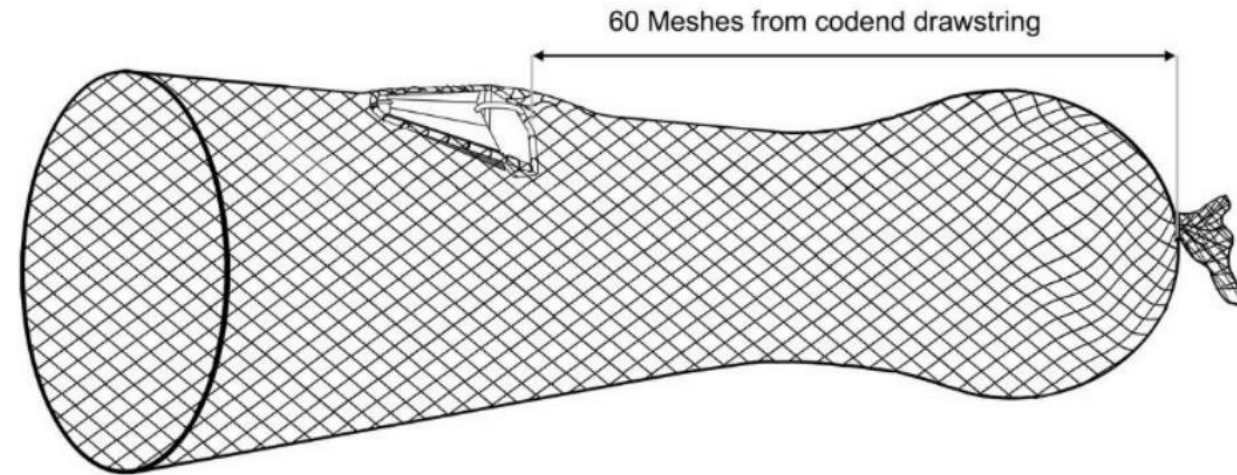
Bycatch – Small Fish

- NPF Bycatch strategy (2018).
 - Reduce small bycatch by more than 30%.
- How do you exclude small unwanted animals that are similar in size to your target species?
 - Extremely challenging!
 - Industry working together



Bycatch – Small Fish

- Targeting the behaviour of fish.
- Fisheye Bycatch Reduction Devices.
- Creates pressure areas for fish to recover and escape.
- All scientific trials highly successful (30-40% reduction with no prawn loss).



Any Questions?

