

ecco®

— GOLF —

MORE THAN A GAME

SS23



# INTRODUCTION

## **DEAR GOLFER**

Summer season 2023 is ready to launch! With all our know-how and expertise we strived to create even better products, setting challenging goals for ourselves that we were able to accomplish - and we are ready for the new season. Every ECCO GOLF development is based on a very high execution level, thanks to our Design Team, and our technical and manufacturing prowess. The result is a tremendous success and really propels us forward. We've managed to make great golf shoes even better - here are the highlights for next season:

**BIOM® H4** – the new redesign makes this sport performance hybrid even more dynamic and sporty for next season

**S-THREE** – has been given a new facelift - building on the great success of this model, we've updated the design as a 'contemporary performance' shoe

**BIOM® C4** – FOR WOMEN Finally the new women's version of the BIOM COOL is 100% aligned with the men's version. Built on a BIOM last and featuring GORE-TEX SURROUND technology.

**CLASSIC HYBRID** – a modern take on a classic silhouette, comfort meets classic style - the connoisseur master craft of golf shoes

*Let's go for the 2023 season -  
where great things get even better!*



## BIOM®

Wearing an ECCO GOLF shoe powered by BIOM® NATURAL MOTION® technology is the closest you will ever get to experiencing a barefoot feel on the first tee.

Inspired by barefoot runners, ECCO GOLF developed the pioneering BIOM® technology to allow the foot to move more naturally and efficiently. Thanks to an anatomical BIOM® last that follows the natural curves of your foot, you can enjoy a better push-off and maximum forward movement, as well as enhanced support and a reduced chance of injury. BIOM® has a low-to-the-ground construction, which ensures stability and strengthens leg muscles with every step.

## GORE-TEX® & SURROUND®

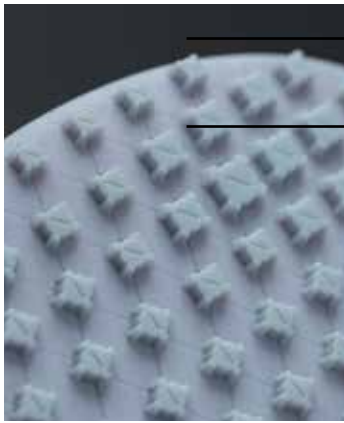
Keeping your foot dry in all weather conditions is key to comfort on a golf course, which is why ECCO GOLF uses GORE-TEX waterproof technologies and GORE-TEX surround in its shoes. ECCO GOLF is the only major golf foot-wear manufacturer to do so. Importantly, GORE-TEX is highly breathable as well as 100 percent waterproof.

GORE-TEX Surround is the state-of-the-art technology that offers 360-degree climate control. Your foot will stay dry and ventilated in all conditions, thanks to technology that prevents water from entering the shoe while allowing perspiration to easily escape from the inside. A highly advanced air channeling system within the grid-shaped sole structure provides 360-degree breathability without compromising on waterproof protection.



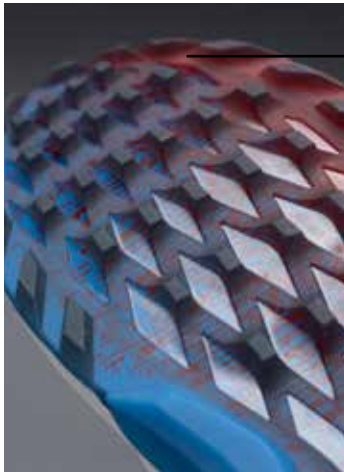
## HYDROMAX®

ECCO performance leather is extremely strong and abrasion resistant due to the thin, compact woven collagen fiber and closed fine grain. Rich leather uppers are treated with exclusive ECCO HYDROMAX® Technology during the tanning process, creating a barrier to moisture which provides excellent water and perspiration resistance, without the use of a membrane.



## E-DTS™ TWIST

A fresh and innovative spin on the E-DTS™ outsole – some traction bars have been enlarged and rotated for additional durability and multi-directional traction.



## MTN-GRIP

The innovative ECCO MTN GRIP outsole has three different sections: heel area - for enhanced heel traction and ground force stability. Middle part - providing traction and ground penetration and the front for rotational support throughout the swing. TPU elements wrap around the sides for lateral stability, while elevating the modern, premium look.



## FLUIDFORM™

Throughout its 25-year history, ECCO GOLF has been engineering shoes with ECCO FLUIDFORM™ Direct Comfort Technology. As the name implies, this innovation has helped ECCO to produce exceptionally comfortable golf shoes. ECCO's signature technology, which the shoemaker has developed over more than 30 Years, direct-injects fluid material into a mold to create a lightweight, cushioned, flexible and durable sole. In the golf industry ECCO GOLF is the only brand that uses FLUIDFORM™, and it is central to the brand's reputation for light-weight, luxurious and innovative comfort.

## ZONAL FLUIDFORM™

With its culture of experimentation and innovation, ECCO continues to develop its signature FLUIDFORM™ technology. One recent advance is ZONAL FLUIDFORM™ Technology, producing a midsole molded from PU that has zones with different rigidity. This innovation means that you can create the ideal balance of cushioning and stability exactly where you need it, optimizing performance and comfort.

- Zone 1: the heel of the midsole has medium rigidity for greater cushioning and comfort.
- Zone 2: the middle part of the midsole has the highest levels of rigidity which supplies excellent lateral stability throughout the swing.
- Zone 3: the forefront of the midsole has lower rigidity for your walking comfort.





# AMBASSADOR GREETING



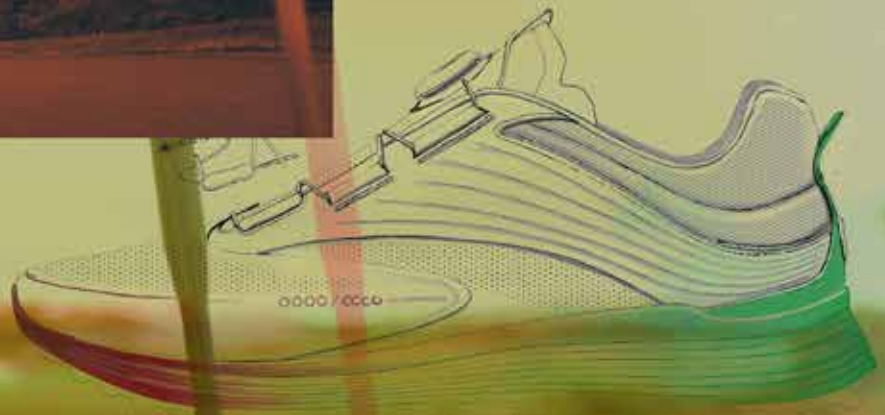
## HENRIK

2023 will be without a doubt one of the most exciting years in my golfing career. As Ryder Cup Captain I have to pick and lead the best European players to perform as a team on the biggest stage in our sport – the Ryder Cup in Rome 2023. The team behind this endeavor is much bigger than just the 12 golfers and my vice captains. The whole team at ECCO GOLF supports me with the best shoes I've ever worn. Here's to a very memorable and successful season!



## LYDIA

I'm excited to be part of this fantastic brand that really feels more like a family. The most important things when choosing my golf shoes are performance, comfort, and style. ECCO GOLF provides all of those at the highest level which gives me the confidence to play my best golf whenever I tee it up. Let's make 2023 the best season yet!



SS23



SS23

**MEN'S  
COLLECTION**



PGA TOUR PLAYERS  
ERIK VAN ROOYEN & DOC REDMAN

# ECCO GOLF CLASSIC HYBRID



Timeless style comes with a modern edge and luxurious touches, as well as innovative comfort, in the new ECCO M GOLF CLASSIC HYBRID. Set on a new sole, this shoe has a premium look and feel, with an upper fashioned from rich, embossed ECCO leather, a soft leather lining and a leather-covered, removable OrthoLite® insole with embossing. Classic meets modern in a hybrid that has HYDROMAX™ water-repellent technology to help keep your foot dry, along with a welt made from 52% recycled leather fibers, and the unique, innovative E-DTS™ TWIST outsole for multi-directional traction.

## INNOVATIVE COMFORT

ECCO FLUIDFORM™ Direct Comfort Technology:

Ensures a finely-tuned balance of cushioning and rebound in the lightweight sole

Creates an integral, flexible and durable bond without the compromises common with conventionally stitched and/or glued assemblies

The next generation of the award-winning ECCO DYNAMIC TRACTION SYSTEM™ outsole, called EDTS™ TWIST, has enlarged and rotated bars for durability and multi-directional traction

## PREMIUM MATERIALS

Rich, embossed ECCO leather, which is developed in the shoemaker's own gold-rated tanneries, adds style and comfort

Classic silhouette for iconic style on and off the course

HYDROMAX® water-repellent technology, which was developed by ECCO, helps to keep your foot dry and comfortable

Leather-covered OrthoLite® insole offers long-lasting cushioning, with embossing on the leather, and the foam partly made with recycled rubber and waste foam

Leather lining adds a touch of luxurious comfort



PRICES (\$) RRP: 220.00

SIZES 39-47



NEW

110214 - 01007  
WHITE  
Cow Leather  
DW01



NEW

110214 - 01178  
MOCHA  
Cow Leather  
DW01

Rich, embossed ECCO leather from the shoemaker's own tanneries enhances the classic look while adding to the premium comfort  
Soft leather lining for extra comfort and a premium feel

Leather-covered, removable OrthoLite® insole, with 5% recycled rubber and 15% recycled production waste foam, with embossing on the leather

ECCO's HYDROMAX™ water-repellent technology helps to keep your foot dry and comfortable

Lightweight sole provides cushioning and flexibility, using innovative ECCO FLUIDFORM™ Direct Comfort Technology

Unique design of the E-DTS™ TWIST outsole offers multi-directional traction and has slightly larger cleats in high-abrasion areas

HYDROMAX®

FLUIDFORM™

# ECCO GOLF BIOM® G5



Upgrade your natural motion. Advanced, athletic performance is mixed with premium, progressive and sporty design with the new ECCO GOLF BIOM® G5. The next generation of the BIOM® G3 is engineered with ZARMA-TOUR® spikes, which are combined with innovative hybrid grooves for superb traction and stability. An updated BIOM® last allows your foot to move more naturally, while supplying anatomical, low-to-the-ground support and stability, as well as a snug fit. Whatever the weather, the GORE-TEX technology offers 100% waterproof protection.

## INNOVATIVE COMFORT

ZARMA-TOUR® spikes with SLIM-LOK system and 6 anti-clogging comfort legs, for excellent traction and stability

ECCO FLUIDFORM™ Direct Comfort Technology

Ensures a finely-tuned balance of cushioning and rebound

Removable and washable Ortholite® inlay sole offers long-term cushioning and extra width if removed

X-TENSA INVISIBLE TECHNOLOGY, which connects the upper with the midsole, for enhanced stability

## PREMIUM MATERIALS

Embossed ECCO Performance Leather, which is developed in the brand's own innovative and gold-rated tanneries, adds durability, comfort and style

GORE-TEX technology ensures 100 percent waterproof protection while allowing the foot to breathe and for natural moisture to escape

Laces or a BOA® Fit System, which allows for an easy on and off

**152304 ECCO MEN'S GOLF BIOM G5 BOA****FEATURES & BENEFITS****PRICES (\$)** RRP: 270.00**SIZES** 39-47152304 - 50585  
STEEL/BLACK  
Cow Leather  
DW01152304 - 60356  
WHITE/REGATTA  
Cow Leather  
DW01152304 - 51227  
WHITE/BLACK  
Cow Leather  
DW01

Embossed ECCO Performance Leather and a sporty mesh add to the modern, athletic design

BIOM® NATURAL MOTION® technology with an updated last, allowing natural movement while providing support, stability and a snug fit

ZARMA-TOUR® spikes are combined with hybrid sections of the outsole for excellent traction and stability, with the ECCO FLUIDFORM™ Direct Comfort Technology supplying a modern balance of cushioning and rebound

GORE-TEX technology provides 100% waterproof protection while still allowing the foot to breathe

Removable and washable Ortholite® inlay sole offers long-lasting cushioning and extra width if removed

BOA® Fit System allows for simple adjustments and an easy on and off, and is on the side, adding to the modern aesthetic

X-TENSA INVISIBLE TECHNOLOGY connects the upper with the midsole for enhanced stability

**BOA®****152314 ECCO MEN'S GOLF BIOM G5****FEATURES & BENEFITS****PRICES (\$)** RRP: 240.00**SIZES** 39-47152314 - 54152  
BLACK/STEEL  
Cow Leather  
DW01152314 - 60216  
WHITE/BLUE DEPTHS  
Cow Leather  
DW01

Embossed ECCO Performance Leather and a sporty mesh add to the modern, athletic design

BIOM® NATURAL MOTION® technology with an updated last, allowing natural movement while providing support, stability and a snug fit

ZARMA-TOUR® spikes are combined with hybrid sections of the outsole for excellent traction and stability, with the ECCO FLUIDFORM™ Direct Comfort Technology supplying a modern balance of cushioning and rebound

GORE-TEX technology provides 100% waterproof protection while still allowing the foot to breathe

Removable and washable Ortholite® inlay sole offers long-lasting cushioning and extra width if removed

X-TENSA INVISIBLE TECHNOLOGY connects the upper with the midsole for enhanced stability

**biom**  
NATURAL MOTION by ECCO



# ECCO GOLF BIOM<sup>®</sup> C4



Feel fresh all summer in the ECCO GOLF BIOM<sup>®</sup> C4, which blends breathable comfort with innovative performance and a contemporary, sneaker-style aesthetic. Some of ECCO's most advanced technologies are used in the next generation of ECCO's BIOM<sup>®</sup> COOL PRO, including an updated BIOM<sup>®</sup> last for natural motion and superior control. For 360-degree breathability and 100% waterproofing, the hybrid golf shoe has a GORE-TEX SURROUND<sup>®</sup> construction, which is combined with an EXHAUST GRID that scoops fresh air towards the sole of your foot.

SS23



## INNOVATIVE COMFORT

Built on ECCO's updated BIOM<sup>®</sup> last that is based on the natural shape and movement of the foot

Anatomical fit to support the natural form of your foot, with an embracing, glove-like fit

EXHAUST GRID, with large, angled openings that scoop in fresh air and direct it to the sole

Innovative ECCO MTN GRIP outsole

Wider outsole than the ECCO BIOM<sup>®</sup> COOL PRO for improved ground contact

## PREMIUM MATERIALS

ECCO Performance Leather, developed in our own tanneries, brings durability, comfort and performance

GORE-TEX Surround<sup>®</sup> offers 100% waterproof protection and 360-degree breathability, helping to keep your foot dry and comfortable

Extremely stretchy mesh sock construction supplies comfort as well as an easy in and out

Breathable OrthoLite<sup>®</sup> insole offers long-term cushioning and can be removed for extra width

## 130424 ECCO MEN'S GOLF BIOM C4 BOA

## FEATURES & BENEFITS

PRICES (\$) RRP: 270.00

SIZES 39-47



130424 - 01007  
WHITE  
Cow Leather  
DW01



130424 - 51252  
MAGNET/BLACK  
Cow Leather  
DW01

ECCO Performance Leather from our own tanneries is combined with a super-stretchy mesh sock

ECCO FLUIDFORM™ Direct Comfort Technology for cushioning, rebound and flexibility

Gore-Tex Surround® for 100% waterproof protection and 360-degree breathability

BIOM® NATURAL MOTION® Technology brings you closer to the ground for stability and control

ECCO MTN GRIP has three different sections providing traction, stability and rotational support throughout the swing

BOA® Fit System allows for an easy on and off and can be adjusted with a simple twist of the dial

X-TENSA INVISIBLE TECHNOLOGY connects the upper with the midsole for enhanced stability



BOA®

## 130404 ECCO MEN'S BIOM C4

## FEATURES & BENEFITS

PRICES (\$) RRP: 250.00

SIZES 39-47



NEW

130404 - 01308  
MAGNET  
Cow Leather  
DW01



130404 - 51227  
WHITE/BLACK  
Cow Leather  
DW01



130404 - 01001  
BLACK  
Cow Leather  
DW01



130404 - 57876  
WHITE/CONCRETE  
Cow Leather  
DW01

ECCO Performance Leather from our own tanneries is combined with a new, super-stretchy mesh sock

ECCO FLUIDFORM™ Direct Comfort Technology for cushioning, rebound and flexibility

Gore-Tex Surround® for 100% waterproof protection and 360-degree breathability

BIOM® NATURAL MOTION® Technology brings you closer to the ground for stability and control

ECCO MTN GRIP has three different sections providing traction, stability and rotational support throughout the swing

Removable OrthoLite® insole for long-term cushioning and breathability

X-TENSA INVISIBLE TECHNOLOGY connects the upper with the midsole for enhanced stability



biom  
NATURAL MOTION by ECCO

## 130434 ECCO M GOLF BIOM C4 ICEMAN EDITION

## FEATURES & BENEFITS

PRICES (\$) RRP: 250.00

SIZES 39-47



NEW

130434 - 01007  
WHITE  
Cow Leather  
DW01

ECCO Performance Leather from our own tanneries and a super-stretchy mesh sock

ECCO FLUIDFORM™ Direct Comfort Technology for cushioning, rebound and flexibility

Gore-Tex Surround® for 100% waterproof protection and 360-degree breathability

BIOM® NATURAL MOTION® Technology brings you closer to the ground for stability and control

ECCO MTN GRIP has three different sections for traction, stability and rotational support throughout the swing

Removable OrthoLite® insole for long-term cushioning and breathability

X-TENSA INVISIBLE TECHNOLOGY connects the upper with the midsole for enhanced stability



biom  
NATURAL MOTION by ECCO

# ECCO GOLF

## BIOM<sup>®</sup> H4



The next generation in natural motion means you can walk more naturally from tee to green, and experience advanced motion control throughout your swing, in ECCO BIOM H4 - an evolution in the brand's BIOM HYBRID performance series. The new BIOM<sup>®</sup> 2.0 last offers a modern, updated look and feel with the same, reliable BIOM<sup>®</sup> NATURAL MOTION<sup>®</sup> Technology, which enables the foot to move naturally, close to the ground, forming like a second skin around the foot. Swing with confidence, thanks to the pioneering new ECCO MTN GRIP outsole with its three sections providing traction, stability and rotational support.

### INNOVATIVE COMFORT

Built on ECCO's skilfully designed and updated BIOM<sup>®</sup> 2.0 last for anatomical support and a glove-like fit

ECCO FLUIDFORM™ Direct Comfort Technology ensures a finely tuned balance of cushioning and rebound

Innovative new ECCO MTN GRIP outsole

TPU element wraps around the foot from the outsole to the midsole for extra stability

### PREMIUM MATERIALS

Premium ECCO Leather, which is developed in the brand's own innovative and gold-rated tanneries

GORE-TEX technology ensures 100% waterproof protection while allowing the foot to breathe and for natural moisture to escape

SS23



## 108504 ECCO M GOLF BIOM H4 BOA

## FEATURES & BENEFITS

PRICES (\$) RRP: 250.00

SIZES 39-48



NEW

108504 - 55569  
WHITE/RETRO BLUE  
Cow Leather  
DW01



NEW

108504 - 60567  
MAGNET/FROSTY GREEN  
Cow Leather  
DW01



NEW

108504 - 58336  
WHITE/GRAVEL  
Cow Leather  
DW01

Crafted in durable ECCO leather with 100% GORE-TEX waterproof protection, so your feet stay dry

BIOM® NATURAL MOTION® technology brings you closer to the ground using an anatomical last

ECCO MTN GRIP outsole provides stability, traction and rotational support through three different sections

X-TENSA INVISIBLE TECHNOLOGY links the sole unit to the laces via internal enforcement for enhanced stability

ECCO FLUIDFORM™ Technology for a light, flexible and comfortable sole, with a removable, washable Ortholite® insole for long-term cushioning and breathability

BOA® Fit System Li2 dial can be twisted in both directions, so you can loosen or tighten the fit for optimal comfort



BOA®

## 108284 ECCO M GOLF BIOM H4

## FEATURES & BENEFITS

PRICES (\$) RRP: 220.00

SIZES 39-48



NEW

108284 - 01001  
BLACK  
Cow Leather  
DW01



NEW

108284 - 60611  
WHITE/AIR  
Cow Leather  
DW01



NEW

108284 - 01379  
CONCRETE  
Cow Leather  
DW01

Crafted in durable ECCO leather with 100% GORE-TEX waterproof protection, so your feet stay dry

BIOM® NATURAL MOTION® technology brings you closer to the ground using an anatomical last

ECCO MTN GRIP outsole provides stability, traction and rotational support through three different sections

X-TENSA INVISIBLE TECHNOLOGY links the sole unit to the laces via internal enforcement for enhanced stability

ECCO FLUIDFORM™ Technology creates lightweight, ergonomically advanced soles that offer cutting-edge comfort and flexibility

Removable and washable Ortholite® inlay sole for long-term cushioning and breathability



biom  
NATURAL MOTION by ECCO

# ECCO GOLF S-THREE



The redesign of performance comfort. The revolutionary hybrid model that blends on-course performance with off-course style, the ECCO S-THREE delivers premium comfort from the tee box to the clubhouse and beyond. Uppers are crafted from ECCO performance leather with 100% waterproof GORE-TEX technology. A double layer of neoprene in the collar and heel provides increased padding for additional comfort throughout the swing while ECCO FLUID-FORM™ Direct Comfort Technology provides an integral, flexible and durable bond without compromises.

SS23



## INNOVATIVE COMFORT

ECCO ZONAL FLUIDFORM™ Technology

PU midsole with three different zones feature differing levels of rigidity

Creates an integral, flexible and durable bond without the compromises common with stitched and/or glued assemblies

Award-winning E-DTS hybrid outsole design

Removable, washable Ortholite® foam inlay sole provides long-term cushioning and enhanced breathability, plus the option of extra width when removed

## PREMIUM MATERIALS

ECCO Performance Leather, which is developed in the brand's own innovative and gold-rated tanneries, adds durability, comfort and style

GORE-TEX technology ensures 100% waterproof protection while allowing the foot to breathe and for natural moisture to escape

Laces or a BOA® Fit System, which allows for an easy on and off

**102954 ECCO M GOLF S-THREE BOA****FEATURES & BENEFITS**

PRICES (\$) RRP: 250.00

SIZES 39-47



NEW

102954 - 60616  
WHITE/BLUE DEPTHS/BRIGHT WHITE  
Cow Leather  
DW01



NEW

102954 - 60628  
WHITE/CARIBBEAN/CONCRETE  
Cow Leather  
DW01



NEW

102954 - 60617  
MARINE/MORILLO/MARINE  
Cow Leather  
DW01

Breathable and premium ECCO leather with 100% GORE-TEX waterproof protection, so your feet stay dry

X-TENSA INVISIBLE TECHNOLOGY links the sole unit to the laces via internal enforcement for enhanced stability

E-DTS® traction system consists of approximately 100 TPU traction bars boasting 800 traction angles

ECCO ZONAL FLUIDFORM™ Technology midsole with 3 different zones offers ground-breaking comfort, stability and flexibility

Removable, washable OrthoLite® insole for long-term cushioning and breathability

BOA® Fit System is made from high-quality materials and offers a uniquely agile and snug closure system

**BOA®****102944 ECCO M GOLF S-THREE****FEATURES & BENEFITS**

PRICES (\$) RRP: 220.00

SIZES 39-47



NEW

102944 - 55433  
BLACK/CONCRETE/BLACK  
Cow Leather  
DW01



NEW

102944 - 60614  
RETRO BLUE/WHITE/MARINE  
Cow Leather  
DW01



NEW

102944 - 60613  
WHITE/BLACK/AIR  
Cow Leather  
DW01



NEW

102944 - 60629  
CONCRETE/RETRO BLUE/CONCRETE  
Cow Leather  
DW01

Breathable and premium ECCO leather from the shoemaker's own gold-rated tanneries

GORE-TEX Technology for 100% waterproof protection so your feet stay dry in wet conditions

X-TENSA INVISIBLE TECHNOLOGY links the sole unit to the laces via internal enforcement for enhanced stability

E-DTS® traction system consists of approximately 100 TPU traction bars boasting 800 traction angles

ECCO ZONAL FLUIDFORM™ Technology midsole with 3 different zones offers ground-breaking comfort, stability and flexibility

Removable, washable OrthoLite® insole for long-term cushioning and breathability

**Z O N A L  
FLUIDFORM™**



# ECCO GOLF TRAY / CORE



**TRAY:** A new twist on street style. Fresh street style collides with state-of-the-art comfort and performance in ECCO GOLF TRAY, which combines an aesthetic sneaker-style cupsole with an innovative traction system. This hybrid will look just as good on the city streets as on the fairways.

**CORE:** Street style that invites you to enjoy your game. A sleek, street-style aesthetic is mixed with advanced performance technologies. Originally introduced as a men's leather shoe, the hybrid is now offered to men and women, with a choice of an ECCO Performance Leather upper or a premium mesh that is breathable, light and summery.

SS23



## TRAY / CORE

ECCO GOLF CORE and TRAY are designed with street style in mind and golf in the soul.

Together they can be merchandised as a “sneaker bundle” and are more fashion driven than any other group in our SS23 collection.

**100344 ECCO M GOLF TRAY****FEATURES & BENEFITS****PRICES (\$)** RRP: 180.00**SIZES** 39-47

NEW

100344 - 60610  
 WHITE/WHITE/BLUE DEPTHS/CARIBBEAN  
 Steer Leather/Steer Leather/Cow Nubuck/Textile  
 DW03

Fresh, premium mix of ECCO leathers with different textures, and perforations on the upper

ECCO HYDROMAX™ technology offers water-repellent properties, to keep your feet dry

Unique design of the E-DTS™ TWIST outsole offers multi-directional traction and has slightly larger cleats in high-abrasion areas

Lightweight sole provides cushioning and flexibility, using innovative ECCO FLUIDFORM™ Direct Comfort Technology

Removable, washable OrthoLite® insole for long-term cushioning and enhanced breathability

**FLUIDFORM™**    **HYDROMAX®**

**100824 ECCO M GOLF CORE****FEATURES & BENEFITS****PRICES (\$)** RRP: 170.00**SIZES** 39-47

NEW

100824 - 60610  
 WHITE/WHITE/BLUE DEPTHS/CARIBBEAN  
 Steer Leather/Steer Leather/Cow Nubuck/Textile  
 DW01

Fresh, premium mix of ECCO leathers with different textures, enhanced with perforations and synthetics

ECCO HYDROMAX™ Technology offers water-repellent properties, to keep your feet dry

Unique design of the E-DTS™ TWIST outsole offers multi-directional traction and has slightly larger traction bars in high-abrasion areas

Lightweight sole provides cushioning and flexibility, using innovative ECCO FLUIDFORM™ Direct Comfort Technology

**FLUIDFORM™**    **HYDROMAX®**

**ECCO GOLF**  
**CORE / BIOM<sup>®</sup> HYBRID**



SS23



**100804 ECCO MEN'S GOLF CORE**

**FEATURES & BENEFITS**

**PRICES (\$)** RRP: 170.00

**SIZES** 39-47



100804 - 60483  
NIGHT SKY/BLACK/OMBRE  
Steer Leather/Synthetic/Textile  
DW01



100804 - 60487  
WHITE/SHADOW WHITE/SILVER GREY  
Steer Leather/Synthetic/Textile  
DW01



100804 - 60484  
CONCRETE/DARK SHADOW/MAGNET  
Steer Leather/Synthetic/Textile  
DW01

Crafted from a blend of durable ECCO leather and premium textiles

ECCO HYDROMAX™ Technology offers water-repellent properties, to keep your feet dry

Unique design of the E-DTS™ TWIST outsole offers multi-directional traction and has slightly larger traction bars in high-abrasion areas

Lightweight sole provides cushioning and flexibility, using innovative ECCO FLUIDFORM™ Direct Comfort Technology



**100814 ECCO M GOLF CORE MESH**

**FEATURES & BENEFITS**

**PRICES (\$)** RRP: 160.00

**SIZES** 39-47



NEW

100814 - 60567  
MAGNET/FROSTY GREEN  
Textile  
DW01



NEW

100814 - 60611  
WHITE/AIR  
Textile  
DW01

Feel summery with a light, breathable mesh and a choice of fresh colors for style on and off the course

Sock construction offers comfort and an easy on and off, while giving the shoe a sporty aesthetic

Advanced E-DTS™ TWIST outsole has enlarged and rotated traction bars for durability and multi-directional traction

ECCO FLUIDFORM™ Direct Comfort Technology for cushioning, rebound and flexibility



**131654 ECCO MEN'S GOLF BIOM HYBRID ORIGINAL**

**FEATURES & BENEFITS**

**PRICES (\$)** RRP: 180.00

**SIZES** 39-47



NEW

131654 - 01178  
MOCHA  
Cow Leather  
DW01



131654 - 01001  
BLACK  
Cow Leather  
DW01



131654 - 01007  
WHITE  
Cow Leather  
DW01



131654 - 01379  
CONCRETE  
Cow Leather  
DW01

Pebbled ECCO Leather from the brand's own tanneries adds to the retro street style, with a choice of understated colors

BIOM® NATURAL MOTION® technology allows for natural movement, while delivering support, stability and a snug fit

Award-winning E-DTS® traction system, which has approximately 100 bars for around 800 traction angles, ensures grip and comfort

ECCO's water-repellent HYDROMAX™ Technology helps to keep your foot dry and comfortable

ECCO FLUIDFORM™ Direct Comfort Technology for cushioning, rebound and flexibility

Removable inlay sole for long-lasting cushioning and breathability



**155854 ECCO MEN'S BIOM HYBRID 3 BOA****FEATURES & BENEFITS**

PRICES (\$) RRP: 200.00

SIZES 39-48



NEW

155854 - 11001  
BLACK  
Cow Leather  
DW01155854 - 11007  
WHITE  
Cow Leather  
DW01

Durable, lightweight ECCO Leather that can withstand the elements

HYDROMAX™ water-repellent technology helps to keep your foot dry and comfortable

BIOM® NATURAL MOTION® Technology brings you closer to the ground for stability and control

ECCO TRI-FI-GRIP™ outsole has three different zones for stability, durability and rotational support

ECCO FLUIDFORM™ Direct Comfort Technology for cushioning, rebound and flexibility

BOA® Fit System is easy and quick to open, close and adjust

HYDROMAX® **BOA®****131664 ECCO M GOLF BIOM HYBRID****FEATURES & BENEFITS**

PRICES (\$) RRP: 160.00

SIZES 39-47



NEW

131664 - 50874  
WHITE/WHITE  
Cow Leather/Synthetic  
DW01

NEW

131664 - 56183  
CONCRETE/CONCRETE  
Cow Leather/Synthetic  
DW01

NEW

131664 - 51052  
BLACK/BLACK  
Cow Leather/Synthetic  
DW01

Crafted from a fresh combination of durable ECCO leather and premium textiles for superb performance

ECCO HYDROMAX™ Technology offers water-repellent properties to keep feet dry even in wet conditions

BIOM® NATURAL MOTION® technology brings the player closer to the ground using an anatomical last

E-DTS® traction system consists of approximately 100 TPU traction bars boasting 800 traction angles

ECCO FLUIDFORM™ Technology creates lightweight, ergonomically advanced soles that offer cutting-edge comfort and flexibility

Removable insole for long-term cushioning and enhanced breathability

HYDROMAX® **biom**  
NATURAL MOTION by ECCO**151134 ECCO M GOLF S-HYBRID****FEATURES & BENEFITS**

PRICES (\$) RRP: 170.00

SIZES 39-47



NEW

151134 - 01038  
MARINE  
Cow Leather  
DW01

NEW

151134 - 11007  
WHITE  
Cow Leather  
DW01

Crafted from premium leathers from ECCO's own gold-rated tanneries

ECCO HYDROMAX™ treatment makes the uppers highly water-repellent, keeping your feet dry

Our E-DTS® outsole is designed to provide added traction and stability for outstanding performance

Lightweight sole provides cushioning and flexibility with ECCO FLUIDFORM™ Direct Comfort Technology

HYDROMAX® **FLUIDFORM™**

SS23

**WOMEN'S  
COLLECTION**



LPGA TOUR PLAYER  
CARO MASSON & LYDIA KO



# ECCO GOLF BIOM® G5



Upgrade your natural motion. Advanced, athletic performance is mixed with premium, progressive and sporty design with the new ECCO GOLF BIOM® G5. The next generation of the BIOM® G3 is engineered with ZARMA-TOUR® spikes, which are combined with innovative hybrid grooves for superb traction and stability. An updated BIOM® last allows your foot to move more naturally, while supplying anatomical, low-to-the-ground support and stability, as well as a snug fit. Whatever the weather, the GORE-TEX technology offers 100% waterproof protection.

## INNOVATIVE COMFORT

ZARMA-TOUR® spikes with SLIM-LOK system and 6 anti-clogging comfort legs, for excellent traction and stability

ECCO FLUIDFORM™ Direct Comfort Technology  
Ensures a finely-tuned balance of cushioning and rebound

Removable and washable Ortholite® inlay sole offers long-term cushioning and extra width if removed

X-TENSA INVISIBLE TECHNOLOGY, which connects the upper with the midsole, for enhanced stability

## PREMIUM MATERIALS

Embossed ECCO Performance Leather, which is developed in the brand's own innovative and gold-rated tanneries, adds durability, comfort and style

GORE-TEX technology ensures 100 percent waterproof protection while allowing the foot to breathe and for natural moisture to escape

Laces or a BOA® Fit System, which allows for an easy on and off

**152523 ECCO WOMEN'S GOLF BIOM G5 BOA****FEATURES & BENEFITS****PRICES (\$)** RRP: 270.00**SIZES** 36-42152523 - 01007  
WHITE  
Cow Leather  
DW01

Playful and original pattern, plus embossed ECCO Performance Leather and a sporty mesh, for a modern, athletic and feminine aesthetic

BIOM® NATURAL MOTION® technology with an updated last, allowing natural movement while providing support, stability and a snug fit

ZARMA-TOUR® spikes are combined with hybrid sections of the outsole for excellent traction and stability, with the ECCO FLUIDFORM™ Direct Comfort Technology supplying a modern balance of cushioning and rebound

GORE-TEX technology provides 100% waterproof protection while still allowing the foot to breathe

Removable and washable Ortholite® inlay sole offers long-lasting cushioning and extra width if removed

BOA® Fit System allows for simple adjustments and an easy on and off, and is on the side, adding to the modern aesthetic

X-TENSA INVISIBLE TECHNOLOGY links the sole unit to the laces via internal enforcement for enhanced stability

**BOA®****152503 ECCO WOMEN'S GOLF BIOM G5 BOA****FEATURES & BENEFITS****PRICES (\$)** RRP: 270.00**SIZES** 36-42152503 - 01007  
WHITE  
Cow Leather  
DW01

Embossed ECCO Performance Leather and a sporty mesh add to the modern, athletic and feminine design

BIOM® NATURAL MOTION® technology with an updated last, allowing natural movement while providing support, stability and a snug fit

ZARMA-TOUR® spikes are combined with hybrid sections of the outsole for excellent traction and stability, with the ECCO FLUIDFORM™ Direct Comfort Technology supplying a modern balance of cushioning and rebound

GORE-TEX technology provides 100% waterproof protection while still allowing the foot to breathe

Removable and washable Ortholite® inlay sole offers long-lasting cushioning and extra width if removed

BOA® Fit System allows for simple adjustments and an easy on and off, and is on the side, adding to the modern aesthetic

X-TENSA INVISIBLE TECHNOLOGY links the sole unit to the laces via internal enforcement for enhanced stability

**BOA®****152513 ECCO WOMEN'S GOLF BIOM G5****FEATURES & BENEFITS****PRICES (\$)** RRP: 240.00**SIZES** 36-42152513 - 01001  
BLACK  
Cow Leather  
DW01152513 - 01007  
WHITE  
Cow Leather  
DW01

Embossed ECCO Performance Leather and a sporty mesh add to the modern, athletic and feminine design

BIOM® NATURAL MOTION® technology with an updated last, allowing natural movement while providing support, stability and a snug fit

ZARMA-TOUR® spikes are combined with hybrid sections of the outsole for excellent traction and stability, with the ECCO FLUIDFORM™ Direct Comfort Technology supplying a modern balance of cushioning and rebound

GORE-TEX technology provides 100% waterproof protection while still allowing the foot to breathe

Removable and washable Ortholite® inlay sole offers long-lasting cushioning and extra width if removed

X-TENSA INVISIBLE TECHNOLOGY connects the upper with the midsole for enhanced stability


**biom**  
NATURAL MOTION by ECCO

# ECCO GOLF BIOM<sup>®</sup> C4



Feel fresh all summer in the new WOMEN ECCO GOLF BIOM<sup>®</sup> C4, which blends breathable comfort with innovative performance and a contemporary, sneaker-style aesthetic. Some of ECCO's most advanced technologies are used in the next generation of ECCO's BIOM<sup>®</sup> COOL PRO, including an updated BIOM<sup>®</sup> last for natural motion and superior control. For 360-degree breathability and 100% waterproofing, the hybrid golf shoe has a GORE-TEX SURROUND<sup>®</sup> construction, which is combined with an EXHAUST GRID that scoops fresh air towards the sole of your foot.

SS23



## INNOVATIVE COMFORT

Built on ECCO's updated BIOM<sup>®</sup> last that is based on the natural shape and movement of the foot

Anatomical fit to support the natural form of your foot, with an embracing, glove-like fit

EXHAUST GRID, with large, angled openings that scoop in fresh air and direct it to the sole

Innovative ECCO MTN GRIP outsole

Wider outsole than the ECCO BIOM<sup>®</sup> COOL PRO for improved ground contact

## PREMIUM MATERIALS

ECCO Performance Leather, developed in our own tanneries, brings durability, comfort and performance

GORE-TEX Surround<sup>®</sup> offers 100% waterproof protection and 360-degree breathability, helping to keep your foot dry and comfortable

Extremely stretchy mesh sock construction supplies comfort as well as an easy in and out

Breathable OrthoLite<sup>®</sup> insole offers long-term cushioning and can be removed for extra width



**130903 ECCO W GOLF BIOM C4**

**FEATURES & BENEFITS**

**PRICES (\$)** RRP: 250.00

**SIZES** 36-42



NEW

130903 - 01007  
WHITE  
Cow Leather  
DW01



NEW

130903 - 01695  
DELICACY  
Cow Leather  
DW01



NEW

130903 - 01038  
MARINE  
Cow Leather  
DW01



NEW

130903 - 01710  
STRAW  
Cow Leather  
DW01

ECCO Performance Leather from our own tanneries and a super-stretchy mesh sock

ECCO FLUIDFORM™ Direct Comfort Technology for cushioning, rebound and flexibility

CORE-TEX SURROUND® for 100% waterproof protection and 360-degree breathability

BIOM® NATURAL MOTION® Technology brings you closer to the ground for stability and control

ECCO MTN GRIP has three different sections for traction, stability and rotational support throughout the swing

Removable OrthoLite® insole for long-term cushioning and breathability



# ECCO GOLF

## BIOM® H4



The next generation in natural motion means you can walk more naturally from tee to green, and experience advanced motion control throughout your swing, in ECCO BIOM H4 - an evolution in the brand's BIOM HYBRID performance series. The new BIOM® 2.0 last offers a modern, updated look and feel with the same, reliable BIOM® NATURAL MOTION® Technology, which enables the foot to move naturally, close to the ground, forming like a second skin around the foot. Swing with confidence, thanks to the pioneering new ECCO MTN GRIP outsole with its three sections providing traction, stability and rotational support.

### INNOVATIVE COMFORT

Built on ECCO's skilfully designed and updated BIOM® 2.0 last for anatomical support and a glove-like fit

ECCO FLUIDFORM™ Direct Comfort Technology ensures a finely tuned balance of cushioning and rebound

Innovative new ECCO MTN GRIP outsole

TPU element wraps around the foot from the outsole to the midsole for extra stability

### PREMIUM MATERIALS

Premium ECCO Leather, which is developed in the brand's own innovative and gold-rated tanneries

GORE-TEX technology ensures 100% waterproof protection while allowing the foot to breathe and for natural moisture to escape

SS23

## 108613 ECCO W GOLF BIOM H4 BOA

## FEATURES & BENEFITS

PRICES (\$) RRP: 250.00

SIZES 36-42



NEW

108613 - 54322  
WHITE/CONCRETE  
Steer Leather/Synthetic  
DW01



NEW

108613 - 60631  
VIOLET ICE/DELICACY/SHADOW WHITE  
Steer Leather/Synthetic/Textile  
DW01



NEW

108613 - 60568  
BLACK/MAGNET/BLACK  
Steer Leather/Synthetic/Textile  
DW01

Crafted in durable ECCO leather with 100% GORE-TEX water-proof protection, so your feet stay dry

BIOM® NATURAL MOTION® technology brings you closer to the ground using an anatomical last

ECCO MTN GRIP outsole provides stability, traction and rotational support through three different sections

X-TENSA INVISIBLE TECHNOLOGY links the sole unit to the laces via internal enforcement for enhanced stability

ECCO FLUIDFORM™ Technology for a light, flexible and comfortable sole, with a removable, washable Ortholite® insole for long-term cushioning and breathability

BOA® Fit System Li2 dial can be twisted in both directions, so you can loosen or tighten the fit for optimal comfort



BOA®

## 108603 ECCO W GOLF BIOM H4

## FEATURES & BENEFITS

PRICES (\$) RRP: 220.00

SIZES 36-42



NEW

108603 - 51241  
MARINE/NIGHT SKY  
Steer Leather/Textile  
DW01



NEW

108603 - 60632  
DELICACY/SHADOW WHITE  
Steer Leather/Textile  
DW01



NEW

108603 - 60611  
WHITE/AIR  
Steer Leather/Textile  
DW01

Crafted in durable ECCO leather with 100% GORE-TEX water-proof protection, so your feet stay dry

BIOM® NATURAL MOTION® technology brings you closer to the ground using an anatomical last

ECCO MTN GRIP outsole provides stability, traction and rotational support through three different sections

X-TENSA INVISIBLE TECHNOLOGY links the sole unit to the laces via internal enforcement for enhanced stability

ECCO FLUIDFORM™ Technology creates lightweight, ergonomically advanced soles that offer cutting-edge comfort and flexibility

Removable and washable Ortholite® inlay sole for long-term cushioning and breathability



biom  
NATURAL MOTION by ECCO



# ECCO GOLF S-THREE



The redesign of performance comfort. The revolutionary hybrid model that blends on-course performance with off-course style, the ECCO S-THREE delivers premium comfort from the tee box to the clubhouse and beyond. Uppers are crafted from ECCO performance leather with 100% waterproof GORE-TEX technology. A double layer of neoprene in the collar and heel provides increased padding for additional comfort throughout the swing while ECCO FLUID-FORM™ Direct Comfort Technology provides an integral, flexible and durable bond without compromises.

SS23



## INNOVATIVE COMFORT

ECCO ZONAL FLUIDFORM™ Technology

PU midsole with three different zones feature differing levels of rigidity

Creates an integral, flexible and durable bond without the compromises common with stitched and/or glued assemblies

Award-winning E-DTS hybrid outsole design

Removable, washable Ortholite® foam inlay sole provides long-term cushioning and enhanced breathability, plus the option of extra width when removed

## PREMIUM MATERIALS

ECCO Performance Leather, which is developed in the brand's own innovative and gold-rated tanneries, adds durability, comfort and style

GORE-TEX technology ensures 100% waterproof protection while allowing the foot to breathe and for natural moisture to escape

Laces or a BOA® Fit System, which allows for an easy on and off

## 102973 ECCO W GOLF S-THREE BOA

## FEATURES & BENEFITS

PRICES (\$) RRP: 250.00

SIZES 36-42



NEW

102973 - 60607  
DUSTY BLUE/AIR  
Steer Leather/Textile  
DW01



NEW

102973 - 60621  
WHITE/DELICACY/WHITE  
Steer Leather/Steer Leather/Textile  
DW01

Breathable and premium ECCO leather with 100% GORE-TEX waterproof protection, so your feet stay dry

X-TENSA INVISIBLE TECHNOLOGY links the sole unit to the laces via internal enforcement for enhanced stability

E-DTS® traction system consists of approximately 100 TPU traction bars boasting 800 traction angles

ECCO ZONAL FLUIDFORM™ Technology midsole with 3 different zones offers ground-breaking comfort, stability and flexibility

Removable, washable OrthoLite® insole for long-term cushioning and breathability

BOA® Fit System is made from high-quality materials and offers a uniquely agile and snug closure system



BOA®

## 102963 ECCO W GOLF S-THREE

## FEATURES & BENEFITS

PRICES (\$) RRP: 220.00

SIZES 36-42



NEW

102963 - 60618  
WHITE/DUSTY BLUE/AIR  
Steer Leather/Steer Leather/Textile  
DW01



NEW

102963 - 60620  
MARINE/HIBISCUS/NIGHT SKY  
Steer Leather/Steer Leather/Textile  
DW01



NEW

102963 - 60619  
DELICACY/BLUSH/DELICACY  
Steer Leather/Steer Leather/Textile  
DW01



NEW

102963 - 60630  
STRAW/WHITE/BRIGHT WHITE  
Steer Leather/Steer Leather/Textile  
DW01

Breathable and premium ECCO leather from the shoemaker's own gold-rated tanneries

GORE-TEX Technology for 100% waterproof protection so your feet stay dry in wet conditions

X-TENSA INVISIBLE TECHNOLOGY links the sole unit to the laces via internal enforcement for enhanced stability

E-DTS® traction system consists of approximately 100 TPU traction bars boasting 800 traction angles

ECCO ZONAL FLUIDFORM™ Technology midsole with 3 different zones offers ground-breaking comfort, stability and flexibility

Removable, washable OrthoLite® insole for long-term cushioning and breathability



Z O N A L  
FLUIDFORM™

# ECCO GOLF TRAY



A new twist on street style. Fresh street style collides with state-of-the-art comfort and performance in ECCO GOLF TRAY, which combines an aesthetic sneaker-style cupsole with an innovative traction system. This hybrid will look just as good on the city streets as on the fairways.

SS23



## TRAY

ECCO GOLF TRAY is designed with street style in mind and golf in the soul. They are more fashion driven than any other group in our SS23 collection.

**108303 ECCO W GOLF TRAY****FEATURES & BENEFITS****PRICES (\$)** RRP: 180.00**SIZES** 36-42108303 - 01002  
BRIGHT WHITE  
Cow Leather  
DW01108303 - 60482  
ALU SILVER/ARONA  
Cow Leather  
DW01108303 - 01375  
WARM GREY  
Cow Leather  
DW01

Crafted in durable leather using ECCO DriTan™ Technology, which reduces the amount of water used in the tanning process

ECCO HYDROMAX™ Technology offers water-repellent properties, to keep your feet dry

Unique design of the E-DTS™ TWIST outsole offers multi-directional traction and has slightly larger traction bars in high-abrasion areas

Lightweight sole provides cushioning and flexibility, using innovative ECCO FLUIDFORM™ Direct Comfort Technology

Removable, washable OrthoLite® insole for long-term cushioning and breathability

**FLUIDFORM™** **HYDROMAX®****108333 ECCO W GOLF TRAY****FEATURES & BENEFITS****PRICES (\$)** RRP: 180.00**SIZES** 36-42

NEW

108333 - 60609  
WHITE/WHITE/ICE FLOWER/DELICACY  
Steer Leather/Steer Leather/Cow Nubuck/Textile  
DW01

Fresh, premium mix of ECCO leathers with different textures, and perforations on the upper

ECCO HYDROMAX™ technology offers water-repellent properties, to keep your feet dry

Unique design of the E-DTS™ TWIST outsole offers multi-directional traction and has slightly larger cleats in high-abrasion areas

Lightweight sole provides cushioning and flexibility, using innovative ECCO FLUIDFORM™ Direct Comfort Technology

Removable, washable OrthoLite® insole for long-term cushioning and enhanced breathability

**FLUIDFORM™** **HYDROMAX®**



**ECCO GOLF**  
**CORE & BIOM® HYBRID**



SS23

**100413 ECCO W GOLF CORE MESH**

**PRICES (\$)** RRP: 160.00      **SIZES** 36-42



NEW

100413 - 00405  
VIOLET ICE  
Textile  
DW01



NEW

100413 - 00710  
STRAW  
Textile  
DW01

**FEATURES & BENEFITS**

Premium mesh is light, summery and breathable, while the sporty sock construction offers comfort and an easy on and off

Advanced E-DTS™ TWIST outsole has enlarged and rotated traction bars for durability and multi-directional traction

ECCO FLUIDFORM™ Direct Comfort Technology for cushioning, rebound and flexibility



**100423 ECCO W GOLF CORE**

**PRICES (\$)** RRP: 170.00      **SIZES** 36-42



NEW

100423 - 60609  
WHITE/WHITE/ICE FLOWER/DELICACY  
Steer Leather/Steer Leather/Textile/Textile  
DW03

**FEATURES & BENEFITS**

Fresh, premium mix of ECCO leathers with different textures, enhanced with perforations and synthetics

ECCO HYDROMAX™ Technology offers water-repellent properties, to keep your feet dry

Unique design of the E-DTS™ TWIST outsole offers multi-directional traction and has slightly larger traction bars in high-abrasion areas

Lightweight sole provides cushioning and flexibility, using innovative ECCO FLUIDFORM™ Direct Comfort Technology



**100573 ECCO WOMEN'S BIOM GOLF HYBRID ORIGINAL**

**PRICES (\$)** RRP: 180.00      **SIZES** 36-42



NEW

100573 - 01405  
VIOLET ICE  
Cow Leather  
DW01



100573 - 01415  
OMBRE  
Cow Leather  
DW01



NEW

100573 - 01001  
BLACK  
Cow Leather  
DW01



100573 - 01007  
WHITE  
Cow Leather  
DW01

**FEATURES & BENEFITS**

Pebbled ECCO Leather from the brand's own tanneries adds to the retro street style, with a choice of understated colors

BIOM® NATURAL MOTION® technology allows for natural movement, while delivering support, stability and a snug fit

Award-winning E-DTS® traction system, which has approximately 100 bars for around 800 traction angles, ensures grip and comfort

ECCO's water-repellent HYDROMAX™ Technology helps to keep your foot dry and comfortable

ECCO FLUIDFORM™ Direct Comfort Technology for cushioning, rebound and flexibility

Removable inlay sole for long-lasting cushioning and breathability



## 100583 ECCO W BIOM GOLF HYBRID

## FEATURES & BENEFITS

PRICES (\$) RRP: 160.00

SIZES 36-42



NEW

100583 - 50366  
ROSE DUST/ROSE DUST  
Cow Leather/Synthetic  
DW01



NEW

100583 - 50874  
WHITE/WHITE  
Cow Leather/Synthetic  
DW01

Crafted from a fresh combination of durable ECCO leather and premium textiles for superb performance

ECCO HYDROMAX™ Technology offers water-repellent properties to keep feet dry even in wet conditions

BIOM® NATURAL MOTION® technology brings the player closer to the ground using an anatomical last

E-DTS® traction system consists of approximately 100 TPU traction bars boasting 800 traction angles

ECCO FLUIDFORM™ Technology creates lightweight, ergonomically advanced soles that offer cutting-edge comfort and flexibility

Removable insole for long-term cushioning and enhanced breathability

HYDROMAX®

biom  
NATURAL MOTION by ECCO

## 125563 ECCO WOMEN'S BIOM HYBRID 3 BOA

## FEATURES & BENEFITS

PRICES (\$) RRP: 200.00

SIZES 35-42



125563 - 01118  
ROSE DUST  
Cow Leather  
DW01



125563 - 11007  
WHITE  
Cow Leather  
DW01

Durable, lightweight ECCO Leather that can withstand the elements

HYDROMAX™ water-repellent technology helps to keep your foot dry and comfortable

BIOM® NATURAL MOTION® Technology brings you closer to the ground for stability and control

ECCO TRI-FI-GRIP™ outsole has three different zones for stability, durability and rotational support

ECCO FLUIDFORM™ Direct Comfort Technology for cushioning, rebound and flexibility

BOA® Fit System is easy and quick to open, close and adjust

HYDROMAX®

BOA®

# ECCO GOLF BRAIDED BELT



Constructed from an elastic woven strap, the ECCO Golf Braided Belt adds a classic finish to your jeans or trousers. This stretchy belt fastens easily without holes and is finished with Perseus leather on the head and end tip. Simply adjust to find your most comfortable fit and fasten using the squared buckle with roll and leather keeper.

## ECCO GOLF BRAIDED BELT

**SIZES** 90/100/110

**PRICES (\$)** RRP: 60.00



**9107573 - 90000**  
BLACK  
Textile



**9107573 - 90776**  
NIGHT SKY  
Textile



**9107573 - 91160**  
NIGHT SKY/CLOUD/  
SOFT MINT  
Textile



**9107573 - 90894**  
DARK GREEN FOREST  
Textile



# NOTES

# SIZE CHART

EU	Women's US	Men's US	Foot Length (CM)	Foot Length (Inches)
35	4/4.5		21.8	8.5
36	5/5.5		23	9
37	6/6.5		23.7	9.3
38	7/7.5		24.3	9.5
39	8/8.5	5/5.5	25	9.8
40	9/9.5	6/6.5	25.7	10.11
41	10/10.5	7/7.5	26.3	10.35
42	11/11.5	8/8.5	27	10.62
43	12/12.5	9/9.5	27.7	10.90
44		10/10.5	28.3	11.14
45		11/11.5	29	11.41
46		12/12.5	29.7	11.69
47		13/13.5	30.3	11.92
48		14/14.5	31	12.20
49		15/15.5	31.6	12.44
50		16/16.5	32.3	12.71

ecco®  
— GOLF —