

# truescience

## ANTI-AGING CREAM



### NOW YOUR SKIN CAN LIE ABOUT YOUR AGE.

Anti-Aging Cream gives you the hydration your skin desperately needs, with the anti-aging benefits that visibly lift, firm, and tighten your skin. Utilizing Nrf2 technology, the cream is scientifically engineered to deeply moisturize your skin and smooth the appearance of wrinkles—particularly crow's feet and feathery lines around the lips.

#### Benefits



#### WRINKLES

Reduces visible signs of aging, fine lines and wrinkles.



#### FIRMNESS

Addresses visible loss of firmness and elasticity.



#### SMOOTHNESS

Skin appears smoother.



#### BLOTCHINESS

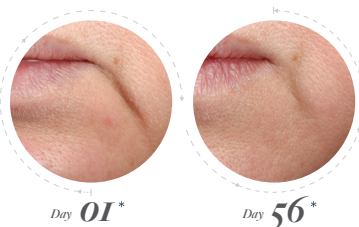
Decreases the appearance of blotchiness.



#### MOISTURE

Deeply moisturizing.

#### Results



Fine lines and wrinkles are less noticeable\*

**82%**

\*As part of an eight week clinical study, participants were asked to complete a self-assessment survey based on their use of the TrueScience products. Individual results may vary.

*Directions*



**01** DISPENSE

3 pumps of cream into the palm of your hand.

**02** APPLY

with your fingertips to the face, neck and décolletage.

**03** FREQUENCY

use morning and evening.

\*Nut is for size reference purposes only.  
There is no nuts in the actual product.

*Do You Have Sensitive Skin?*

Test product on forearm before using on face.  
Apply a small amount to your inner forearm.  
If skin shows no reaction after a few minutes,  
apply to face as directed

*Ingredients*

Aqua (Water), Glycerin, Dimethicone, Isopentyl diol, Cetearyl Alcohol, Glyceryl Stearate, Betaine, SD Alcohol 40-B, Butylene Glycol, Olea Europaea (Olive) Fruit Unsaponifiables, Whey Protein, Palmitoyl Oligopeptide, Palmitoyl Tetrapeptide-7, Plantago Lanceolata Leaf Extract, Brassica (Juncea/ Oleracea Capitata/Oleracea Italica/Oleracea Botrytis/Oleracea Acephala) Sprout Extract, Carrageenan, Wasabia Japonica Root Extract, Sea Salt, Glycolipids, Glycine Soja Sterols (Soybean Phytosterols), Sodium Hyaluronate, Calcium Hydroxymethionine, 3-Aminopropane Sulfonic Acid, Hydroxyethylcellulose, Phellodendron Amurense Bark Extract, Santalum Album (Sandalwood) Extract, Hordeum Distichon (Barley) Extract, Tocopherol, Tocopheryl Acetate, Bacopa Monniera (Brahmi) Leaf Extract, Silybum Marianum (Milk Thistle) Fruit Extract, Tetrahydrodiferuloylmethane, Tetrahydrodemethoxydiferuloylmethane, Tetrahydrobisdemethoxydiferuloylmethane, Tetrahydropiperine, Aloe Barbadensis Leaf Juice, Panthenyl Triacetate, Sodium Stearoyl Lactylate, Tetrahexyldecyl Ascorbate, Camellia Sinensis (Green Tea) Leaf Extract, Pentylene Glycol, Phenoxyethanol, Caprylyl Glycol, Ethylhexylglycerin, Hexylene Glycol, Parfum (Fragrance), Carbomer, Xanthan Gum, Polysorbate 20, Tetrasodium EDTA, D-Limonene (Parfum, Fragrance), Hexyl Cinnamol (Parfum, Fragrance), Linalool (Parfum, Fragrance).

**WARNINGS:** Avoid direct contact with eyes. If eye contact occurs, flush gently and thoroughly with water. Discontinue use if rash or irritation occurs. If irritation persists, consult your health care practitioner.