

truescience®

PERFECTING LOTION



PUT YOUR BEST FACE FORWARD

The Perfecting Lotion is an evolutionary step in skin care. Not simply a toner or serum, this Nrf2-packed formula is scientifically engineered to help diminish discoloration, visibly improve skin tone, and leave you with smoother, brighter, and more radiant looking skin.

Benefits



FIRMNESS

Reinforces skin density and firmness.



PROTECTION

Maintains a strong barrier function.



SKINTONE

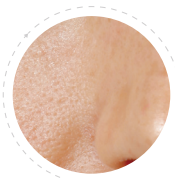
Reduces discolorations and evens skin tone.



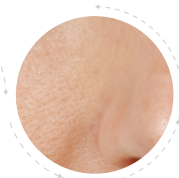
MOISTURE

Helps skin retain its own moisture.

Results



Day 01*



Day 56

Skin felt cleaner and refreshed.*

92%

Skin looked brighter and more luminous.*

87%

*As part of an eight week clinical study, participants were asked to complete a self-assessment survey based on their use of the TrueScience products. Individual results may vary.

Directions



01 DISPENSE

approximately one teaspoon into the palm of your hand.

02 APPLY

with your fingertips to the face, neck and décolletage.

03 FREQUENCY

Use morning and evening.

*Fruit is for size reference purposes only.
There is no fruit in the actual product.

Do You Have Sensitive Skin?

Test product on forearm before using on face.
Apply a small amount to your inner forearm.
If skin shows no reaction after a few minutes,
apply to face as directed

Ingredients

Aqua (Water), Glycerin, Bupleurum Falcatum Root Extract, Brassica (Juncea/Oleracea Capitata/Oleracea Italica/Oleracea Botrytis/Oleracea Acephala) Sprout Extract, Xanthan Gum, Xylitylglucoside, Astragalus Membranaceus Root Extract, Anhydroxylitol, Bacopa Monniera (Brahmi) Leaf Extract, Silybum Marianum (Milk Thistle) Fruit Extract, Curcuma Longa (Turmeric) Root Extract, Piper Nigrum (Black Pepper) Seed Extract, Camellia Sinensis (Green Tea) Leaf Extract, Atractylodes Macrocephala Root Extract, Wasabia Japonica Root Extract, Xylitol, Isoceteth-20, Ethylhexylglycerin, Phenoxyethanol, Parfum (Fragrance), Malachite Extract, Tetrasodium Glutamate Diacetate, Sodium Hydroxide, Citric Acid, Glucose, D-Limonene (Parfum, Fragrance).

WARNINGS: Avoid direct contact with eyes. If eye contact occurs, flush gently and thoroughly with water. Discontinue use if rash or irritation occurs. If irritation persists, consult your health care practitioner.