

Introducing...

# GCC IV ANNEX

OFF FREEDOM WAY, LEKKI PHASE 1

A Development by  
GMH Luxury



A MARKETING  
PRESENTATION

BY

GEMINI PLACE  
APARTMENTS LTD

# GCC IV Annex

**GODMADE CONNECT COURT IV ANNEX**

**Off Freedom Way, Lekki Phase 1**

**GMMH**

**LUXURY**

*Offered for sale by Gemini Place Apartments*

# A World of Contemporary Luxury Living

Step into GCC4 Annex and be greeted by a flawlessly executed mix of grandeur and tranquility.

The GodMade Connect Court 4 Annex stands 10 floors tall, with 28 units of 3bedroom flats plus BQ, 24 units of 2bedroom flats plus BQ, 2units of 4 bedroom penthouse apartments, 8 units of 3 bedroom maisonette penthouse apartments plus BQ, 62 apartments in all and 35M above ground

GCC4 Annex features a recreation of 500 SQM including a swimming pool, gym, backup power, fully fitted Bosch kitchen, elevator among other facilities which guarantees a seamless and comfortable lifestyle. With a healthy balance of luxury, class, functionality and comfort, GCC 4 Annex is where you should be!

2 bedroom flat with  
1 maid's room  
approx 163sqm 2 car parks

3 bedroom flat with  
1 maid's room  
approx 260sqm 2 car parks

3 bedroom penthouse with  
1 maid's room  
approx 260sqm 2 car parks

OFF FREEDOM WAY,  
OFF REGIONAL ROAD, LEKKI PHASE 1

**Title:** Lagos State Government Consent.

**PROJECT DELIVERY DATE:** DECEMBER 2024

## WHY EVERYONE SHOULD BUY UNITS OF GCC4 Annex

### HERE'S WHY!

#### PREMIUM LOCATION

GCC 4 Annex is located in one of Lagos's most promising and top choice neighborhoods, Off Freedom Way in Lekki, a neighbourhood reserved for the elite and people of great affluence.

#### LUXURY FITTINGS AND FEATURES

This luxury apartment is fitted with ultra-luxury fittings and amazing housing features which makes living comfortable and desirable.

#### MASSIVE ROI GUARANTEED

Aside being the perfect home for you, GCC 4 Annex serves as a strong hold of investment. Investing in GCC 4 Annex guarantees up to 40% ROI in just 24 months.

#### PASSIVE INCOME

Rental value on GCC 4 Annex is a whopping 12%. Aside putting up your apartment for rent, Lekki is a strategic location with high demand for short-let apartments.

#### FLEXIBLE PAYMENT PLAN

Secure a unit or more of our luxury apartments with 30% initial deposit and spread your balance over a period of 3 to 18 months

#### MORTGAGE PLAN ALLOWED

We understand the need to get more time to pay for your home, and we have partnered with Living Trust Mortgage Bank and Brent Mortgage Bank to provide mortgage services to our buyers. With our Luxury Home Buyer Mortgage Plan, your dream of owning your luxury home is coming true.

## Features & Facilities



Elevator



Adequate Lighting



Gym



Central Draining System



Automated Gate Access



Extensive Land Scaping



Back up power supply



Perimeter Fencing



Proton Security



Swimming Pool



Outdoor Lounge



CCTV System

*Offered for sale by Gemini Place Apartments*

# 3D View

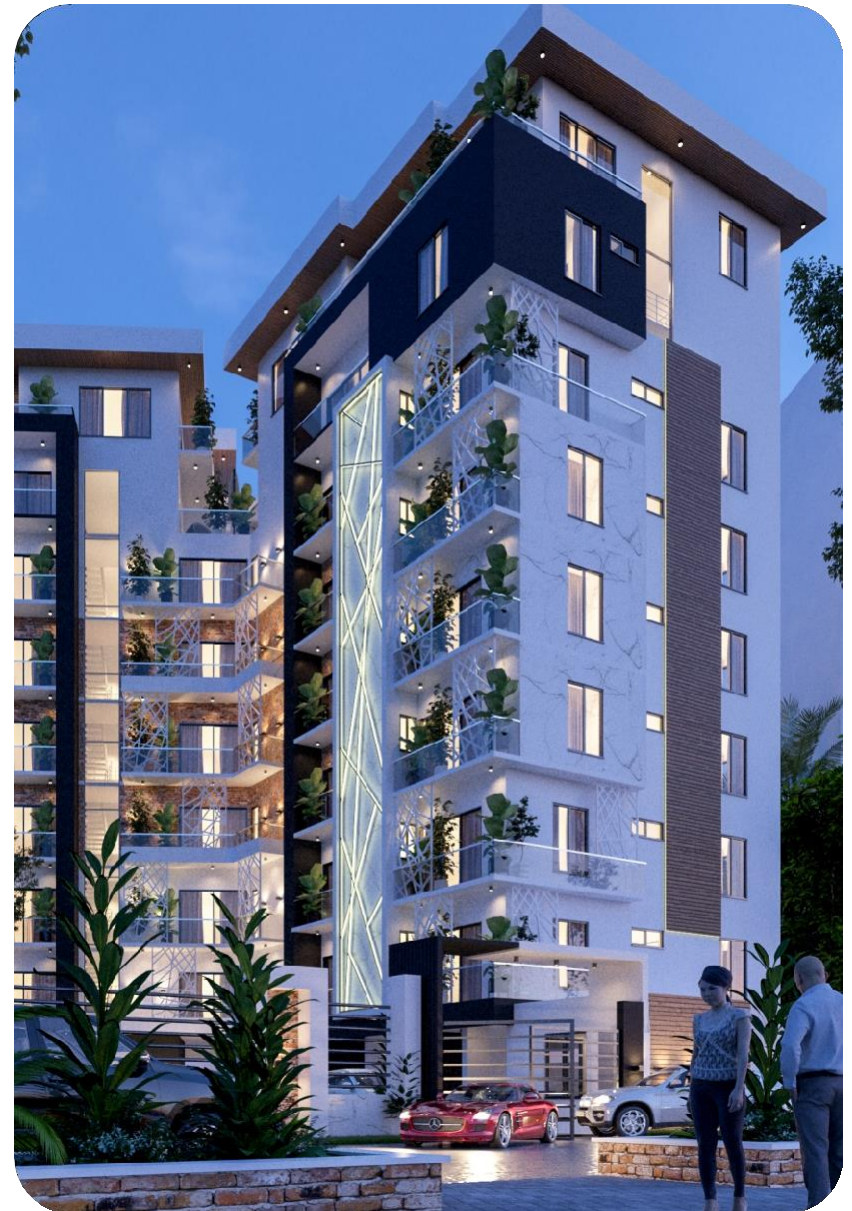


*Offered for sale by Gemini Place Apartments*

# 3D View



Luxury, class,  
Functionality  
And comfort

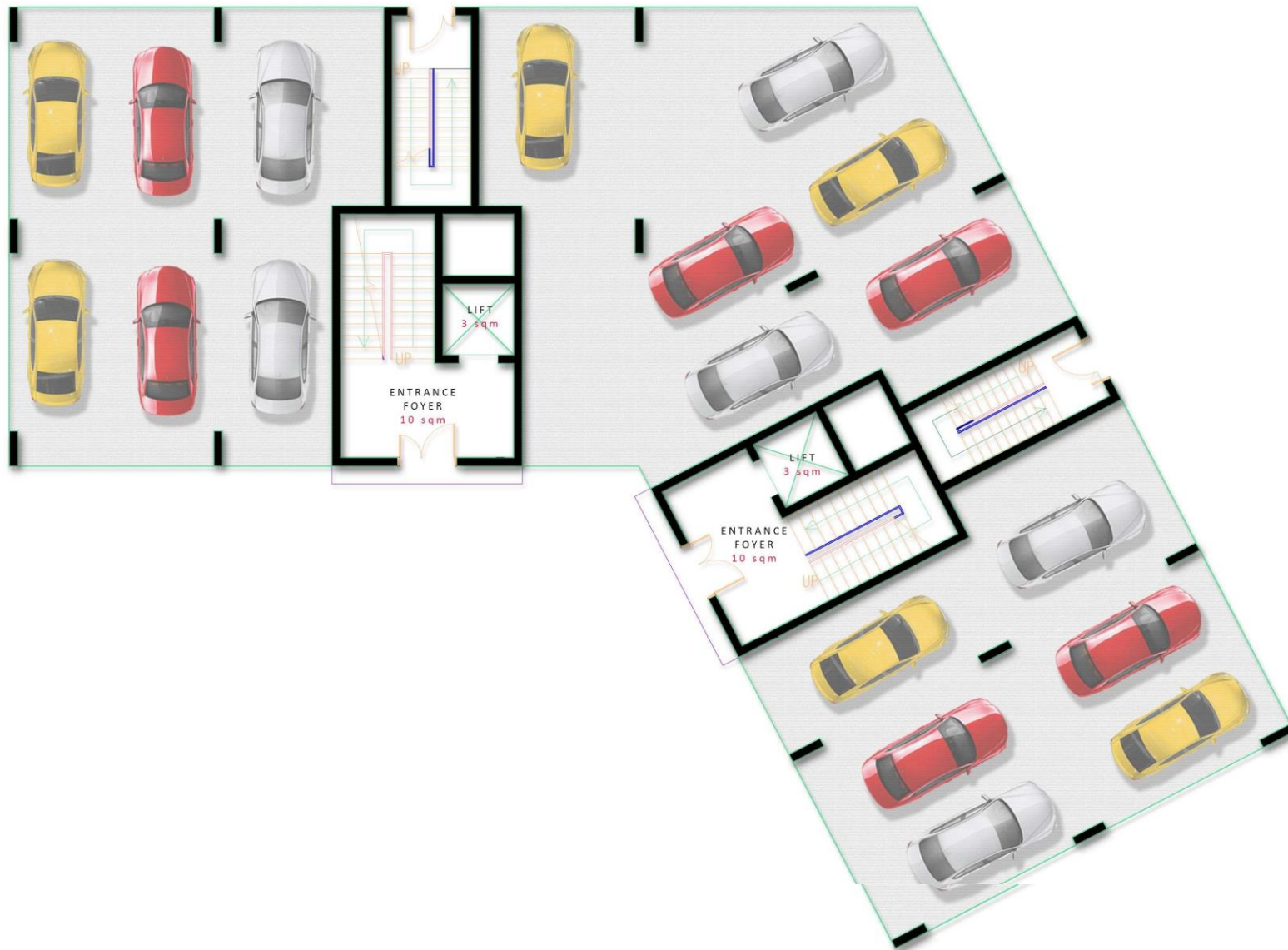


*Offered for sale by Gemini Place Apartments*

# Floor Plan (2 Bedroom)



# Floor Plan

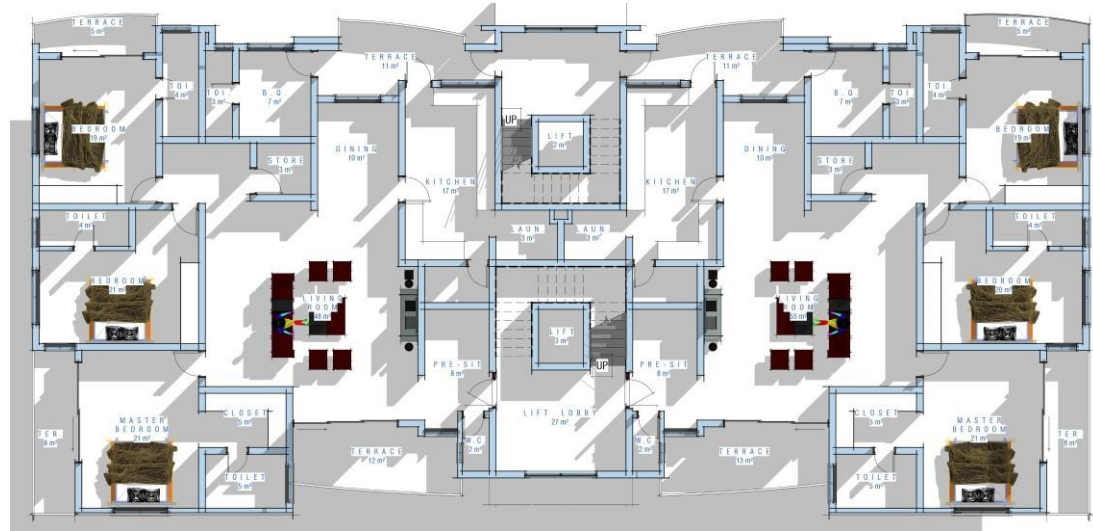


Typical floor plan

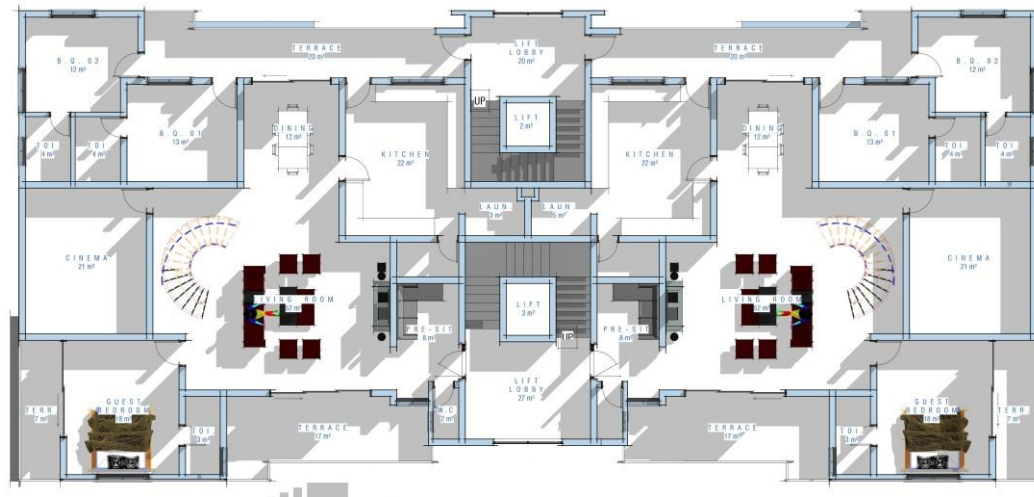
*Offered for sale by Gemini Place Apartments*



# Floor Plan (3 Bedroom)



TYPICAL FIRST - SIXTH FLOOR PLAN



SEVENTH FLOOR PLAN

*Offered for sale by Gemini Place Apartments*

# PRICES

as at February 2024. Prices are subject to change at any time.

UNIT TYPOLOGY			
UNIT TYPE	TOTAL SIZE (SQM)	CAR PARKS	PRICE \$
2 Bedroom Flat	163	2	100,000

UNIT TYPOLOGY			
UNIT TYPE	TOTAL SIZE (SQM)	CAR PARKS	PRICE \$
3 Bedroom Flat	260	2	140,000

NOTE: The prices Stated are NAIRA equivalent.

# Surrounding Enviroment

The Dome Church

MTN Office


Alpha Pharmacy & Stores

Children's International School

Shopping Mall

Chicken Republic

**You are a step away from your dream**



To book & pay for your  
apartment, please contact:

**GEMINI PLACE APARTMENTS LTD**

Email: [eyitemi@geminiplaceng.com](mailto:eyitemi@geminiplaceng.com)  
Phone: +2348024394990