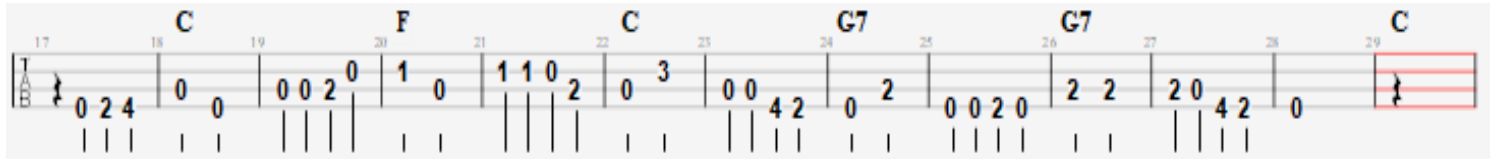


I Walk the Line Johnny Cash

Starting note 3rd string open ("C") (Optional intro:C|C|G7|C-1 strum and sing)

INTRO: 234|C |C |F |F | C|C|G7|G7 |G7| G7|G7| C *just 1 strum and sing on!*

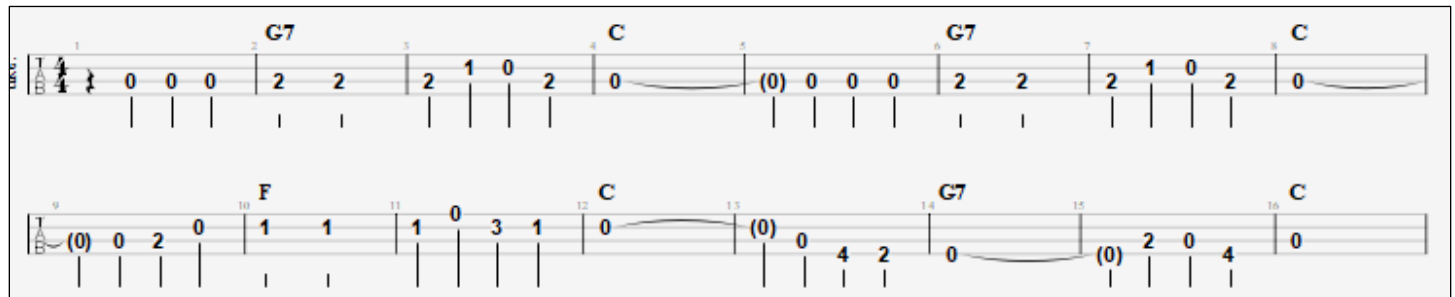
Instrumental for intro:



I keep a [G7]close watch on this heart of [C]mine / / / /
I keep my [G7]eyes wide open all the [C]time / / / /
I keep the [F]ends out for the tie that [C]binds / / / /
Because you're [G7]mine / / / / I walk the [C] line / / / /

I find it [G7] very, very easy to be [C] true / / / /
I find my[G7]self alone when each day is [C]through / / / /
Yes I'll ad[F]mit that I'm a fool for [C]you / / / /
Because you're [G7] mine / / / / I walk the [C] line. / / / /

Instrumental:



As sure as [G7]night is dark and day is [C] light / / / /
I keep you [G7] on my mind both day and [C] night / / / /
And happi [F]ness I've known proves that it's [C] right / / / /
Because you're [G7] mine / / / / I walk the [C] line / / / /

You've got a [G7]way to keep me on your [C]side / / / /
You give me [G7] cause for love that I can't [C] hide / / / /
For you I [F] I'd even try to turn the [C]tide / / / /
Because you're [G7] mine / / / / I walk the [C] line / / / /

I keep a [G7]close watch on this heart of [C]mine / / / /
I keep my [G7]eyes wide open all the [C]time / / / /
I keep the [F]ends out for the tie that [C]binds / / / /
Because you're [G7]mine / / / / I walk the [C] line / / / / (repeat line)