

**PRECISION HORIZONTAL AND VERTICAL FIXTURING WITH UNLIMITED POSSIBILITIES**



## ALPHA 28 MODULAR WELDING TABLES

**THE ALPHA 28 MODULAR TABLE FEATURES FIVE WORKING SURFACES WITH RECONFIGURABLE REVERSIBLE & REPLACEABLE TOP & SIDE PLATES.**

The ONLY Ultra-Duty Welding Table featuring a modular, reversible, and replaceable tabletop plate design. The Alpha 28 modular fixturing system provides unlimited possibilities for improving current processes and increasing project capabilities. It features 25 mm thick tabletop plates and Ø28 mm CNC machined boreholes that are spaced in a 100 mm grid pattern. The Alpha 28 will let you take on your biggest projects with ease. Grow and expand your business capabilities with the Alpha 28 system.

- Hardened, Heat Treated Surface for superior performance.
- Plate Thickness 25 ±0.06 mm
- 28 mm / 1.1" dia. CNC Machined Tabletop Holes
- Each heavy duty table leg supports up to 2,000 kg (4,400 lb)

### TOP PLATE

**Material** P20  
**Hardness** HV750

### SIDE PLATE

**Material** Q345B  
**Hardness** HV550

### FRAME

**Material** A36

### TABLETOP SIZES

3.0 × 1.5 M  
2.4 × 1.2 M  
2.0 × 1.0 M  
1.5 × 1.0 M  
1.2 × 1.2 M

### LEG OPTIONS

650 mm H Leg  
500 mm H Leg  
400 mm H Leg  
500-900 mm H + Adj Leg  
550-750 mm H Adjustable Leg + Caster  
600 mm H Leg + Caster



**STANDARD LEG**  
AVAILABLE IN  
650, 500 & 400 MM H



**ADJUSTABLE LEG**  
500-900 MM H



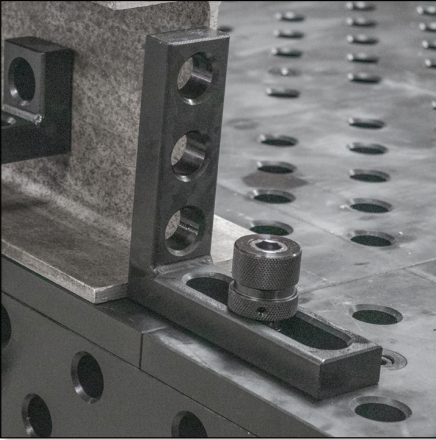
**LEG WITH CASTER**  
650 MM H



**ADJUSTABLE LEG WITH CASTER**  
550-750 MM H

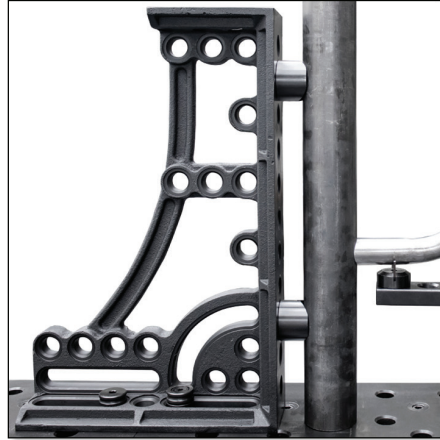


The unique and versatile Alpha 28 tables are complemented by a complete range of modular fixtures and clamping accessories.



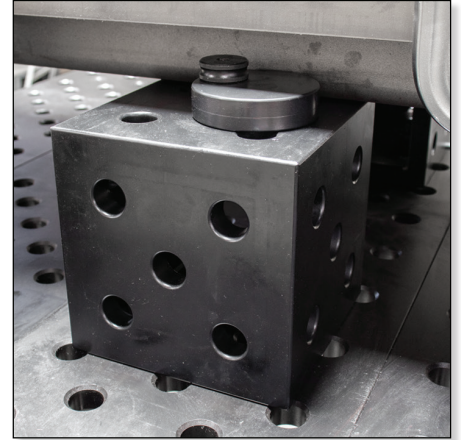
### Angle Squares

can be used in the same manner as a stop or combined with other elements to form more complex fixtures. Slots enable a range of adjustable options.



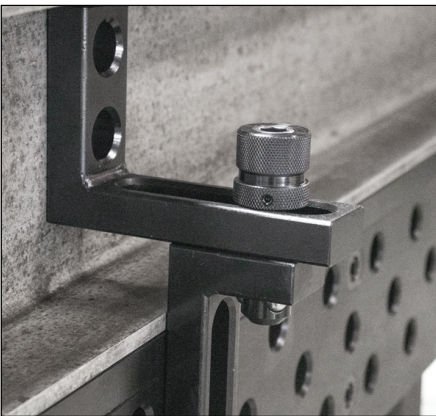
### Heavy Duty Cast Squares

are manufactured from high quality ductile cast iron and specifically designed to handle heavy parts. They serve equally well for stopping large parts, serving as table extensions, or building vertically. Cut outs are optimized for lighter weight and easier handling.



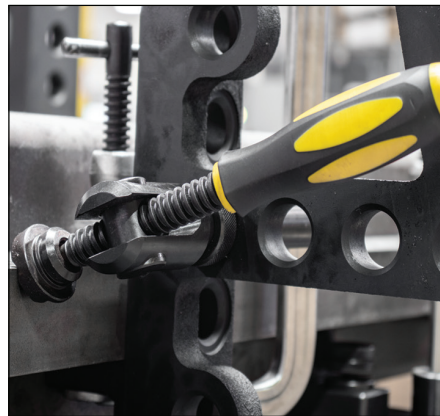
### Extension Blocks

are ideally suited as table extensions or for joining multiple tables together for long projects. Extension Blocks are hardened.



### Ball Lock Bolts

come in short and long versions. Short bolts are designed for connecting two components together such as a table to a stop or a stop to a square. Long bolts are designed for connecting three components together.



### T-Post Pipe Clamps

feature horizontal and vertical adjustment as well as pivoting action at the spindle head. An adjustment ring at the base allows it to sit in a lower profile during welding as the round bar sits below the table or clamping square surface.



### Inserta Pliers

are table mounted C-clamps for repetitive clamping. The clamping range can be set with adjusting screw.

