

55" Triple Samsung Digital Menu Board

Designed for your digital signage application

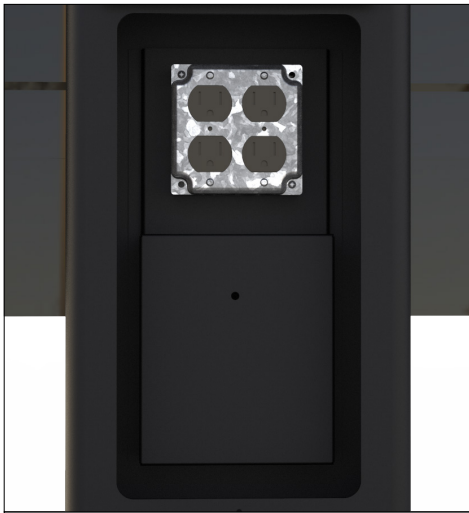


QSRDMB355

The PDG QSRDMB355 is made for the QSR industry and supports (3) Samsung 55" OHF displays. This digital drive thru menu board is rated for temperatures of -20f to 122f and is wind load rated up to 140 mph. This system is unique in that there are no custom designed display cabinets. The Samsung OHF display is already IP56 rated and does not require additional protection from the environment.

Since this solution is a digital board mount you can buy the display or PDG can purchase IT if that is preferred. PDG stocks this solution and can ship in (24) hours.

Constructed using 7 GA. high impact steel braces and 1/4" thick walled tubing which will insure longevity and years of use. This DMB solution is first primed with a zinc rich primer and can be painted virtually any color you want. For high traffic areas there is an optional front cover bumper housing available.



This solution comes equipped with a 4-outlet quad box and a Zero Surge model OEM6-20W-120 power filter. With this fully designed system surge issues are a thing of the past.

