

East Central Illinois Mobile Law Enforcement Training Team

MTU #13

Course Announcement



Breach Point With Kent Williams

November 5th, 2024

0830– 1630 Hrs

Denny Stewart Training Center

3121 Dewitt Avenue

Mattoon, IL

Submit enrollment to:

Registration form at

www.mtu13.com,

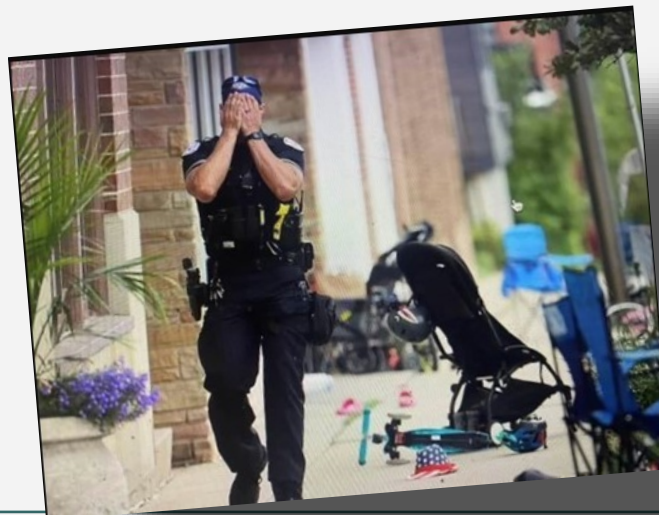
ecimlett@gmail.com

Or call 217-345-3344

Amidst the tumultuous and ever-changing landscape of diminishing moral values, our nation's police force finds itself grappling with stressors that can significantly impact their lives, careers, and families. This seminar aims to offer attendees a fresh perspective on the distinctive and potentially challenging repercussions of excelling within the law enforcement milieu.

Officers, Sergeants, and their support personnel will delve into the highs and lows associated with modern policing, contemplating how these experiences shape the delicate equilibrium between professional duties and personal relationships. Led by a seasoned law enforcement leader and educator, participants will explore a range of best practices for tackling these issues head-on.

A central theme of personal leadership will permeate throughout, affording attendees ample opportunities to ponder the universal odyssey of a life dedicated to law enforcement. Equipped with a new arsenal of skills, this seminar seeks to empower contemporary guardians to uphold a balanced, purposeful, and fulfilling lifestyle, all while preserving the inherent nobility of their calling.



BREACH POINT **CONSULTING**

Breachpointconsulting.com

Breach Point: **Personal & Professional Breakthroughs for Police Officers**

Topics will include:

- Removing classic frustrations encountered by all law enforcement officers & the impact of reward-ed cynicism
- The Caustic Effects of performing well in law enforcement
- How the dynamics of control and trust can negatively influence officer attitudes both at work and home
- Learning and mastering the unique, misunderstood and potentially problematic consequences of police perspectives
- Learning from our Knightly predecessors on how to self motivate on the street, in the department and at home
- Inspiring a new generation of Knights
- Removing classic frustrations encountered by all law enforcement officers & the consequences of rewarding cynicism
- How the dynamics of control and trust can negatively influence officer attitudes
- How to lead and inspire those who have been taught to anticipate the worst in everything
- Being an optimistic leader among a sea of professional pessimists
- Overcoming the damaging effects of "the rule bound" and stoic approaches to the job
- Recognizing the symptoms of stress and how police stress differs significantly from other jobs
- Developing a personal and organizational action plan to confront the issues
- Learning to help others overcome unhealthy organizational over-investment
- Why officers are at greater risk for alcohol abuse, divorce, isolation, depression and suicide
- Warning signs of distress and preventative programs to reduce and monitor it

Observed Mandates Include:

Crisis Intervention

Human Rights

Ofc. Wellness

Procedural Justice



This course is funded by the Illinois Law Enforcement Training and Standards Board.