

East Central Illinois Mobile Law Enforcement Training Team

MTU #13

651 Jackson St., Rm327
Charleston, Il. 61920
Telephone 217-345-3344



Course Announcement

Psychology of Domestic Violence by Gail Sullivan

November 13th, 2024

0830 Hrs– 1630 Hrs

Denny Stewart Training Center

3121 Dewitt Avenue

Mattoon, Il.

Submit enrollment to:

Registration form at

www.mtu13.com,

ecimlett@gmail.com

Or call 217-345-3344

Course Information-

Join us for an essential training session designed to equip law enforcement officers with the necessary tools and insights to effectively respond to domestic violence situations.

Key Topics Covered:

- 1. Understanding Domestic Violence Dynamics:** Gain insight into the complex dynamics of domestic violence, including the cycle of violence, power and control tactics, and the impact on victims and families.
- 2. Risk Assessment and Intervention:** Learn effective strategies for assessing the level of risk in domestic violence cases and implementing appropriate intervention techniques to ensure the safety of all parties involved.
- 3. Legal Mandates and Procedures:** Stay updated on legal mandates and procedures related to domestic violence, including relevant laws, policies, and protocols for law enforcement response.
- 4. Interagency Collaboration:** Explore the importance of building positive and essential relationships with organizations dedicated to assisting individuals affected by domestic violence, fostering collaboration for comprehensive support.
- 5. Comprehensive Understanding:** Develop a working knowledge of the various aspects of domestic violence, including psychological, legal, forensic, social, and preventive measures, to enhance overall performance in responding to incidents.

Observed Mandates Include:

Const. Use of LE Authority

Cultural Competency

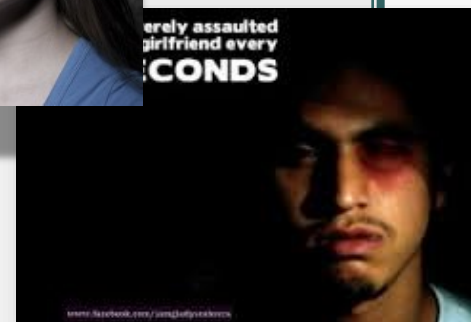
Human Rights

Legal Updates Reporting of Child Abuse

Officer Wellness Psychology of Dom Vio-



erely assaulted
girlfriend every
15 CONDS



<https://www.facebook.com/jamgoflystevens>

This course is funded by the Illinois Law Enforcement Training and Standards Board.