

## FLASHING CATALOG

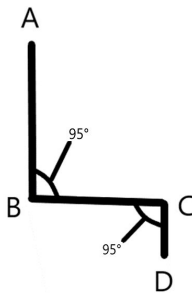
### Z-Flashing

#### Uses:

- Metal head flashing that bridges horizontal joints between building materials to prevent water intrusion. Installed under and at the base of an upper component, such as a piece of siding and extends downward over a lower component. (trim/window/door)

#### Material:

- Aluminum - .019/.025/.032/.040
- G90/PGRIP - 18ga/20ga/22ga/24ga
- Steel (painted) - 22ga/24ga/26ga



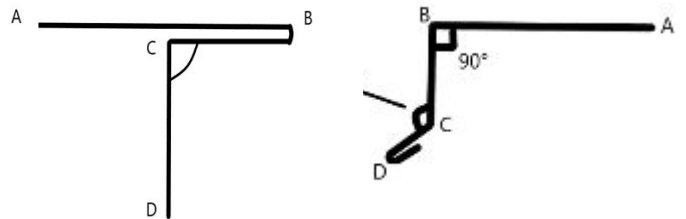
### Drip Edge

#### Uses:

- Metal flashing that is installed along the edge of a roof to prevent water from flowing back into the house or building. Its primary function is to direct water away from the roof edge, protecting the underlying components and preventing water damage. Can be bent to match slope of roof.

#### Material:

- Aluminum - .019/.025/.032/.040
- G90/PGRIP - 18ga/20ga/22ga/24ga
- Steel (painted) - 22ga/24ga/26ga



For Estimates & Lead Time

**Jerry Corner,**

**Production Manager**

[JD.Corner@PrestigeTexas.com](mailto:JD.Corner@PrestigeTexas.com)

## FLASHING CATALOG

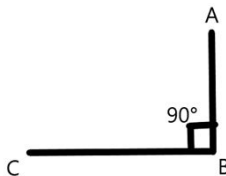
### L Flashing

#### Uses:

- Metal flashing that is commonly used in roofing and construction to prevent water infiltration and damage. The "L" shape of the flashing provides a protective barrier at the intersection of two building surfaces, such as at the intersection of a roof and a vertical wall or chimney.

#### Material:

- Aluminum - .019/.025/.032/.040
- G90/PGRIP - 18ga/20ga/22ga/24ga
- Steel (painted) - 22ga/24ga/26ga



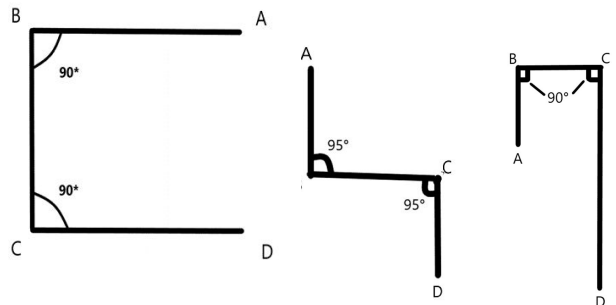
### Z/C Girts

#### Uses:

- Metal generally used as roof girts or wall girts, helping to create the main 'skeleton' of your building that other materials are fixed to. C girts are more lightweight and are normally used to support walls and floors. Z girts are stronger and used for roofing and walls.

#### Material:

- G90 - 16ga/18ga/20ga/22ga



For Estimates & Lead Time

**Jerry Corner,**

**Production Manager**

[JD.Corner@PrestigeTexas.com](mailto:JD.Corner@PrestigeTexas.com)

## FLASHING CATALOG

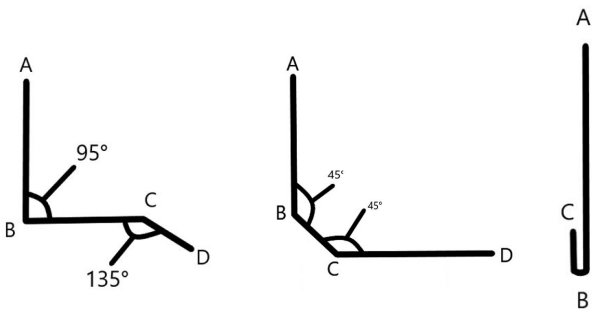
### Base to Wall Flashing

#### Uses:

- Base Flashing are used at the joint between the base of structure and a vertical surface such as a wall or a parapet, guarding against water penetration.

#### Material:

- Aluminum - .019/.025/.032/.040
- G90/PGRIP - 18ga/20ga/22ga/24ga
- Steel (painted) - 22ga/24ga/26ga



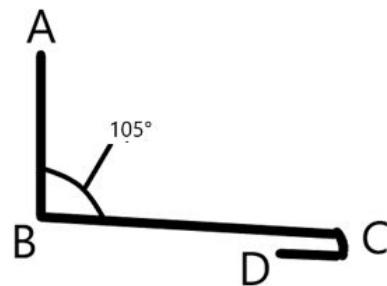
### Brick Ledge Flashing

#### Uses:

- Brick ledge flashing takes water that hits the wall and kicks it out towards the exterior, to prevent accumulation within the wall system.

#### Material:

- Aluminum - .019/.025/.032/.040
- G90/PGRIP- 18ga/20ga/22ga/24ga
- Steel (painted) - 22ga/24ga/26ga



For Estimates & Lead Time

**Jerry Corner,**

**Production Manager**

[JD.Corner@PrestigeTexas.com](mailto:JD.Corner@PrestigeTexas.com)

## FLASHING CATALOG

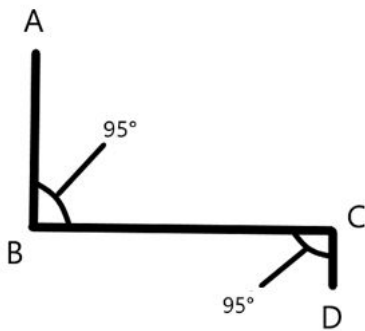
### Through Wall Flashing

#### Uses:

- Through-wall flashing is used to divert moisture, which has entered the wall, to the outside, before it can cause damage.

#### Material:

- Aluminum - .019/.025/.032/.040
- G90/PGRIP - 18ga/20ga/22ga/24ga
- Steel (painted) - 22ga/24ga/26ga



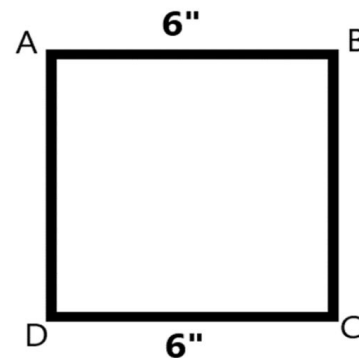
### Lap Siding Butt Joints

#### Uses:

- Flashing behind butt joints is an effective, low maintenance way to comply with building code and help protect against water intrusion. James Hardie recommends 6-inch-wide flashing that overlaps the course below by 1-inch. However, some local building codes may require different size flashing.

#### Material:

- Aluminum - .019/.025



For Estimates & Lead Time

**Jerry Corner,**

**Production Manager**

[JD.Corner@PrestigeTexas.com](mailto:JD.Corner@PrestigeTexas.com)