

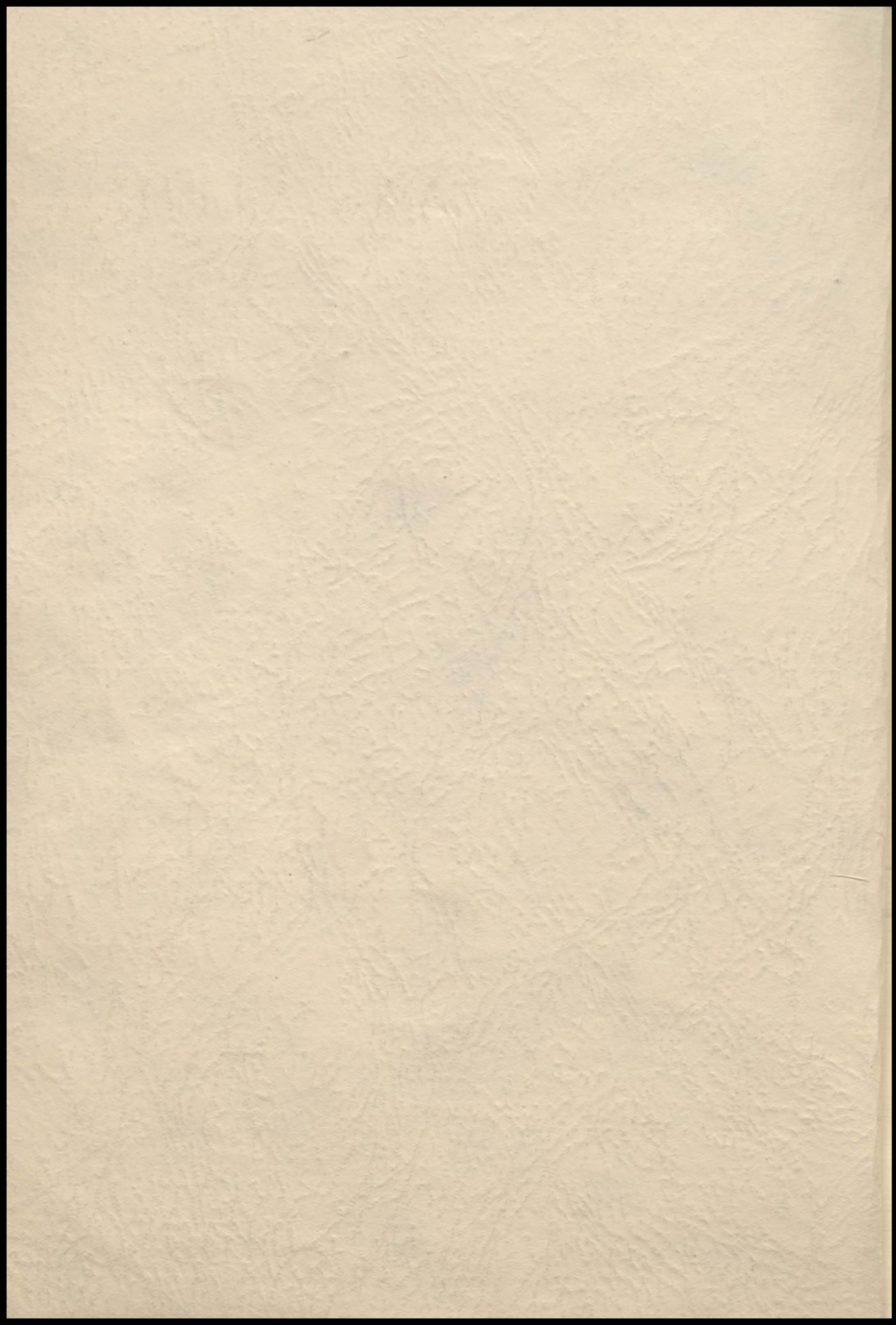
ВЕТОНІ

1923

BETONI



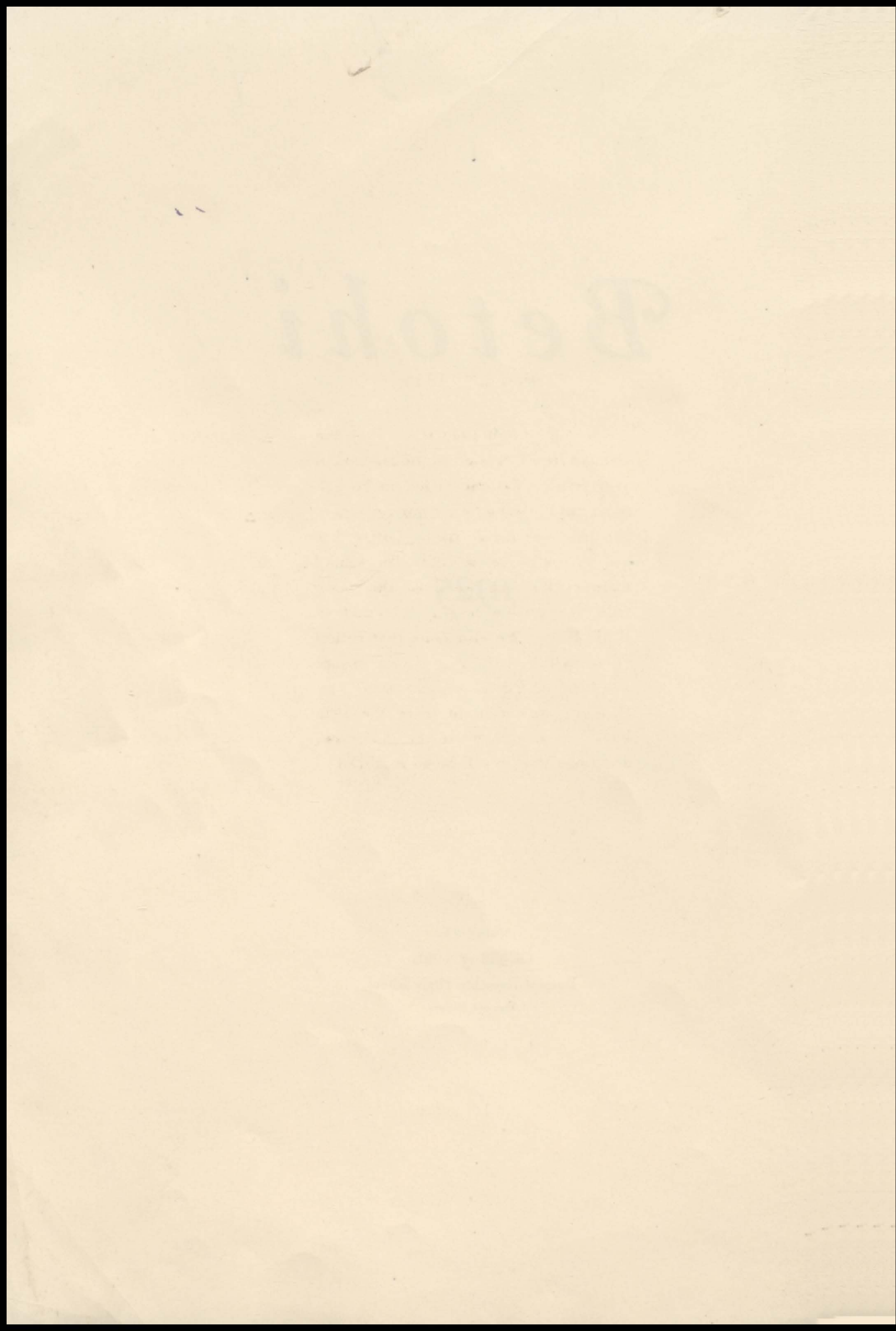




Betohi

1925

Published by
CLASS of 1926
Bement Township High School
Bement, Illinois



FOREWORD

For the second time since 1914 the Bement High School is putting out a year book. We have tried to keep a record of the school year, portray school life, and summarize the activities that are necessary to a successful school maintenance, and we trust this book will be valuable to all interested in B. T. H. S. We also hope that future classes will keep records of their school life and publish an annual each year. It is our intention to leave the 1925 book as a monument to the 1925 class, and hope that it will be so regarded.

BETOHI



OUR HIGH SCHOOL BUILDING



DEDICATION

We, the Class of '26, Juniors of the Bement Township High School, do hereby dedicate this book to the Seniors, our classmates, the worthy Class of '25, and to the Board of Education.

BETOHI

ANNUAL STAFF



Top row—Caroll Soper, Art Editor; Mary Tabaka, Society Editor; Miriam Harrell, Sophomore Editor; Russel Proctor, Freshman Editor.

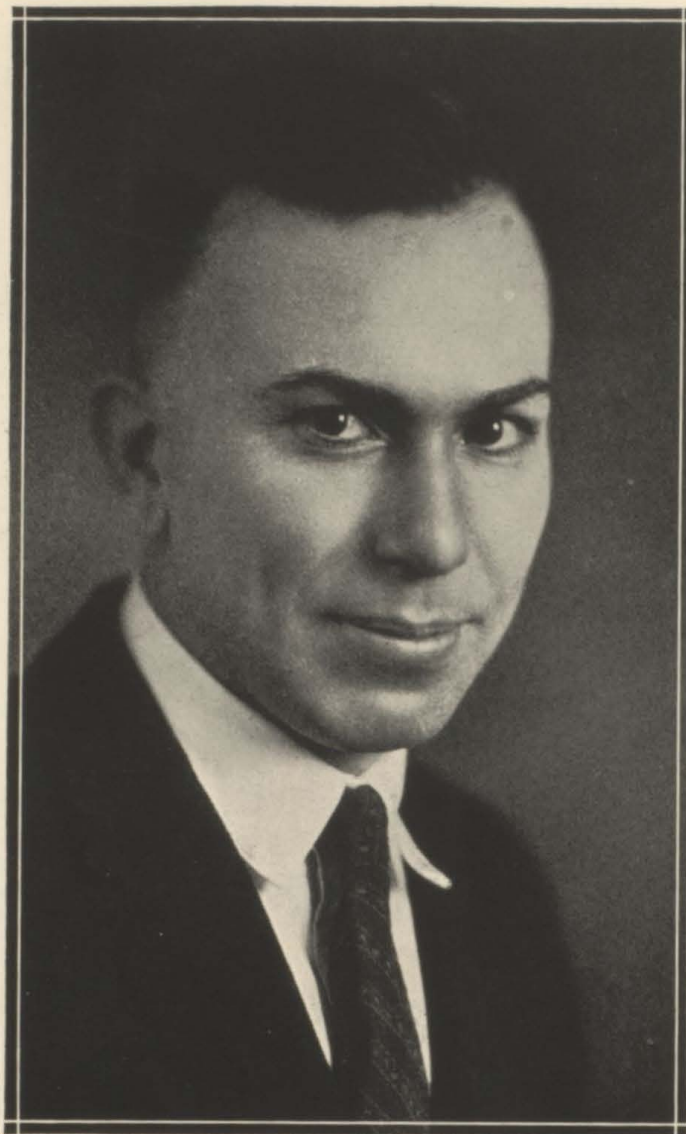
Bottom row—Blanche Longbons, Senior Editor; Nate Smith, Athletic Editor; Florence Leuschke, Editor in Chief; Glen Durbin, Business Manager; Vivian Reading, Joke Editor.

BETOHI

FACULTY



BETOHI



MR. McCLELLAN
Superintendent

BETOHI



MISS ARCHIBOLD



MISS BANCROFT



MR. SOLLARS

BETOHI



MISS ADAMS



MISS ROBERTS



MR. HARRISON

BETOHI



MR. KRONSAKEN



MR. MAXWELL



MISS NIEDERMEYER



FACULTY

MR. McCLELLAN

B. S. Miami University, Oxford, Ohio.
Graduate Student University of Illinois.
Saumur Artillery School, Saumur,
France.

MR. MAXWELL

Southern Missouri State Normal, Cape
Girardeau.
U. S. M. R. F. School, Pelham Bay,
Columbia University, New York.

MISS BANCROFT

Chicago University, Chicago, Illinois.
Northern State Normal University.
B. S. University of Illinois.
Graduate School, University of Illinois.

MISS NIEDERMEYER

B. S. Illinois Wesleyan University.

MISS ADAMS

A. B. Illinois Woman's College.
Diploma in Expression.
Graduate work University of Illinois.

MR. SOLLARS

James Millikin University.

MR. HARRISON

B. of Ed. Illinois State Normal University.

MR. KRONSAGEN

B. S. Illinois Wesleyan University.
Illinois State Normal University.

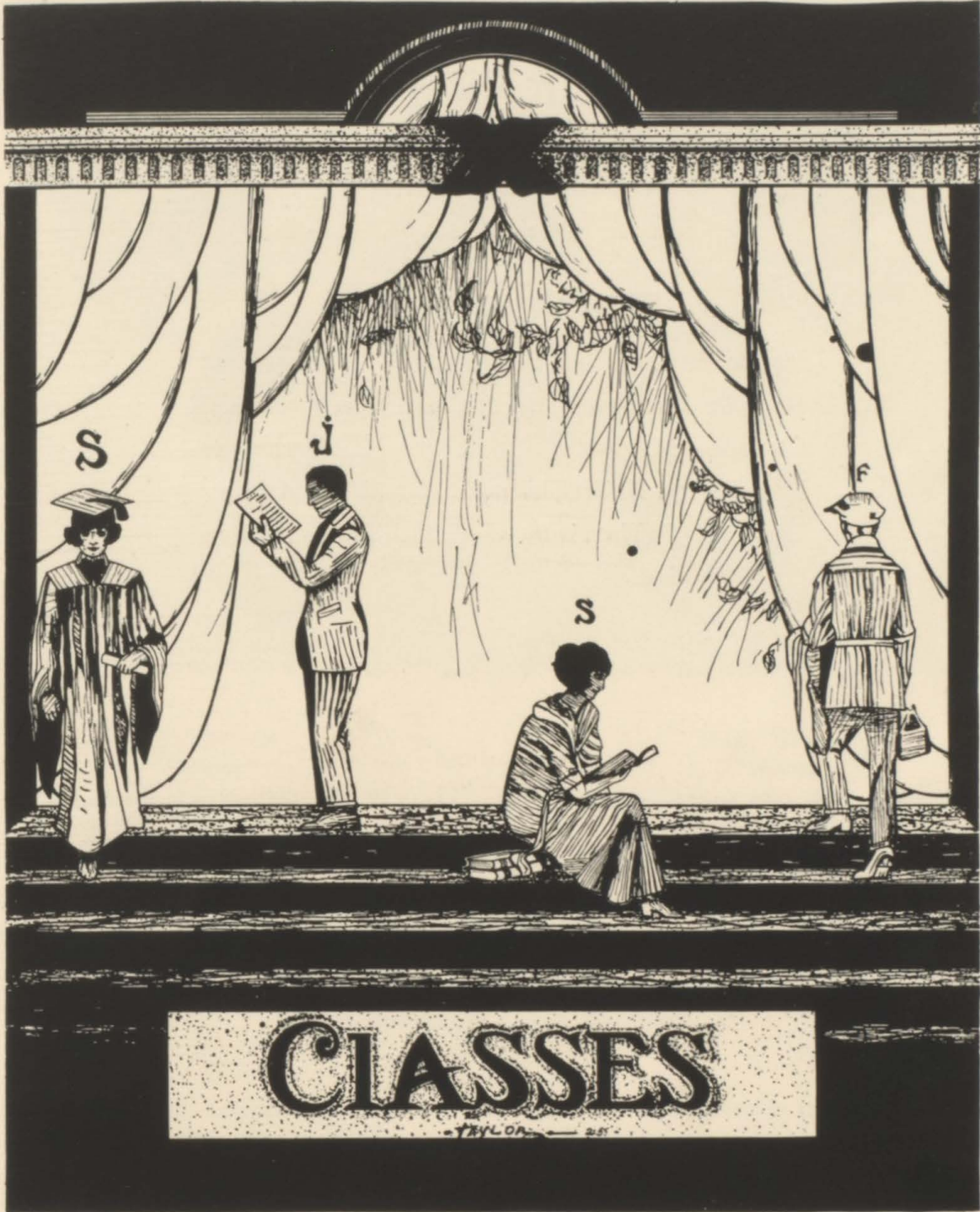
MISS ARCHIBOLD

B. S. University of Illinois.

MISS MARY COLLETT

Music School.
Miami University, Oxford, Ohio.

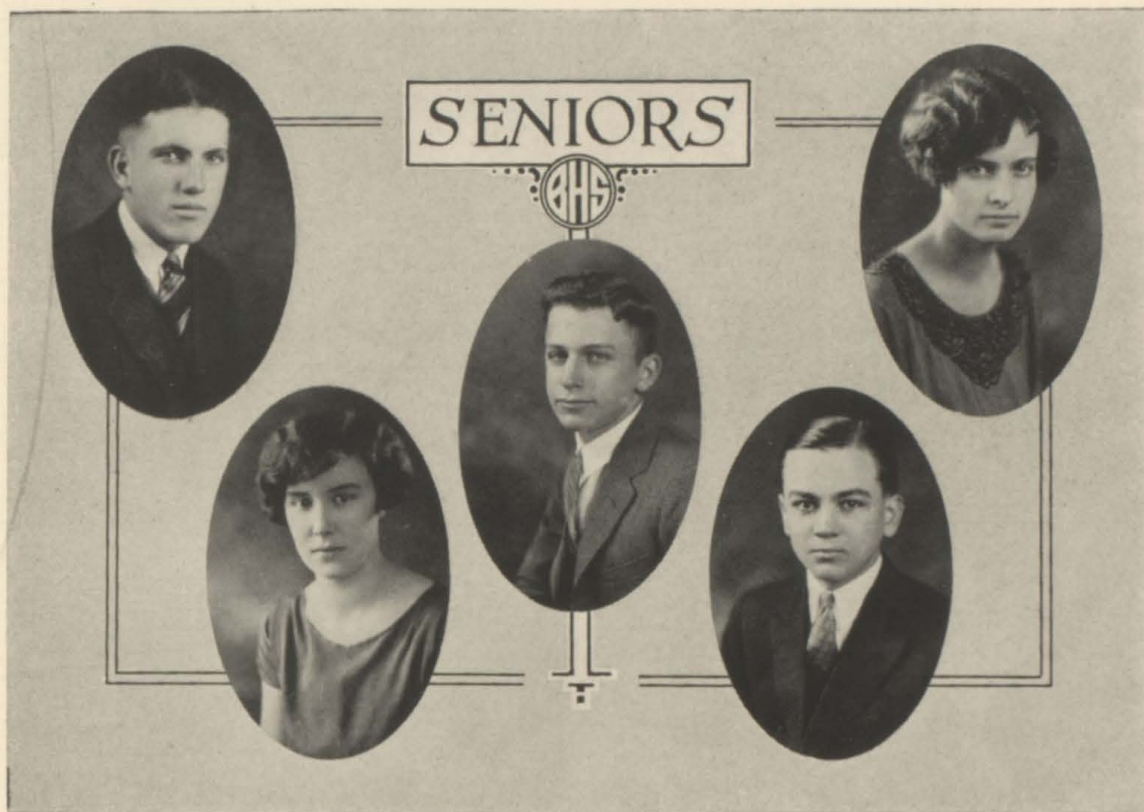
BETOHI



SENIOR OFFICERS

Dallas Hill*President*
Blanche Longbons*Vice President*
Clarence Marlow.....*Treasurer*
Mr. George B. McClellan.....*Class Adviser*
Mr. Jean P. Harrison*Class Adviser*

BETOHI



JOHN GLYNN
"Johnnie"

Philomathean '25; Football '23, '24,
Letter '24; Orchestra '21, '25.

MARY HENEБРY
"Henny"

Philomathean '25; Basketball '22;
Baseball '22; Junior Play.

DALLAS HILL
"Dutch"

Philomathean, Pres. '25; Minor
Honors 4; Football Mgr. '24,
Letter; Annual Business Mgr.
'24; Senior Class Pres. '25; Class
Treas. '23, '24; Senior Play '25.

BLANCHE LONGBONS

Philomathean '25; Glee Club, '24,
'25; Type Awards '24, '25; Shtd.
Awards '24, '25; Pres. Comm.
Club '25; Senior Editor of An-
nual '25; Basketball '25; Minor
Honors 3; Major Honors 1; Sen-
ior Vice Pres. '25; Operetta '24,
'25; Junior Play; Senior Play
'25; Critic Senior Paper.

CLARENCE MARLOW

Philomathean '25; Basketball '25,
Numeral; Football '24; Minor
Honor 1; Senior Treas. '25;
Class Play '24, '25.

BETOHI



FRANCES ROSE
"Fran"

Delphian '24, '25; Sec.-Treas. of Delphian '24, '25; Glee Club '22, '23, '24, '25; Operetta '22, '23, '24, '25; Major Honors 1; Minor Honors 3; Shtd. Team '24; Orchestra '22, '23, '24, '25; Senior Play '25; Asst. Editor Senior Paper '25; Valedictorian '25.

RUTH STOERGER
"Smiles"

Philomathean '25; Commercial Club '25.

IRENE TRENT
"Trentie"

Delphian '25; Typing Awards, Silver Cup '24; Glee Club '22, '23, '24, '25; Basketball '22, '23, '24, '25; Minor Honors 4; Commercial Club '25; Typing Team '24, '25; Pres. G. A. A. '25; Operetta '22, '23, '24, '25; Editor Commercial Booster '25; Senior Class Play '24.

RUTH SEITZ
"Rufus"

Philomathean '24, '25; Minors 3; Commercial Club '25.

RUTH TAYLOR
"Toots"

Philomathean '25; Glee Club '22; Basketball '23; Cartoonist for Annual '24, '25.

BETOHI



HAROLD MURPHY
"Spike"
Delphian '25; Glee Club '25; Orchestra '22, '23, '24, '25; Minor Honors 2; Operetta '25; Senior Play '25; Track '24; Adv. Mgr. Senior Observer '25.

LUCILE MCPHERSON
Philomathean Critic '25; Glee Club '22, '23; Basketball '22, '23, '24, '25; Oratorical Contest Essay, 1st Place '23; Major Honors 3; Minor Honors 1; School Honors 4; Class Honors 4; Commercial Club '25.

ELLEN NOLAN
Delphian '24.

DOROTHY NOE
"Dot"
Delphian '25; Commercial Club '25; Grad. Hammond H. S. '24; Anthony Wayne Inst., Indiana, Correspondence Work '24, '25.

RAYMOND QUINLAN
"Quin"
Delphian '25; Glee Club '25; Minor Honors 2; Operetta '25; Senior Play '25.

BETOHI



AIMEE BRANDENBURG

Philomathean '24, '25; Glee Club '24, '25; Operetta '24, '25; Orchestra '25; Minor Honors 4; Editor in Chief of Commercial Booster; Typing and Shorthand Teams '24, '25, Decatur, County, District and State Contests; Commercial Club '25; Typing Awards '24, '25.

MILDRED CATLIN

"Middie"

Delphian '25; Entered from Hammond '25; Glee Club '25; Minor Honors 3; Operetta '25; Senior Class Paper Literary Critic.

SELBY A. CLARK

"Sed"

Philomathean '25; Football '21, '22, '23, '24, Letters '23 and '24; Track '22, '23, '24, '25; Commercial Club; Junior-Senior Play; Pres. Freshman Class; Sport Editor '24 Annual; Tennis '24, '25; Member of Athletic Board of Control '22, '23, '24, '25.

GUYNELL CREEL

Philomathean '25; Orchestra '22, '23, '24, '25; Glee Club; Commercial Club, Sec.-Treas. '25; Typing Awards '24, '25; Junior-Senior Play; Assistant Joke Editor of '24 Annual; Typing Team '24, '25, Decatur, County, District and State Contests.

HELEN FISHER

"Tad"

Delphian '25; Glee Club '22, '23, '24, '25; Vice Pres. Commercial Club '25; Sec.-Treas. Girls' Athletic Assn. '25; Basketball '22, '23, '24, '25, Captain '24; Operetta '22, '23, '24, '25.

BETOHI



FLORENCE DUNN
Delphian '25; Glee Club '22; Commercial Club '25; Basketball; Class Reporter; Shtd. '24, '25; Vice Pres. '23.

KATHRYN FISHER
"Kitty"
Philomathean '25; Basketball '20, '21, '22, '25; Glee Club '20, '21, '22, '25; Commercial Club '25.

RUTH STIRRETT
"Trish"
Delphian '25; Minor Honors 4; Senior Play '25.

JOSEPHINE McGRATH

FRANCES O'BRIEN
"Francy"
Philomathean '24, '25; Minor Honors 1.

BETOHI



THELMA PRIESTLEY

Delphian '25; Philomathean '24; Glee Club '22; Operetta '22; Orchestra '22, '23, '24, '25; Basketball '23, '24; Minor Honors 1.

CLAUDE WALKER

"Slim"

Delphian '25; Orchestra '22, '23, '24; Glee Club '22, '23, '24, '25; Football '22, '24, '25; Letter '25; Minor Honors 4; Comm. Club '25; Operetta '22, '23, '24, '25; Editor-in-Chief School News; Senior Play '25; Cir. Mgr. Commercial Booster; Joke Editor Senior Observer.

DONALD RYAN

"Tuffy"

Philomathean '25; Glee Club '22, '25; Operetta '25.

LEWIS WILKINSON

"Levi"

Delphian Pres. '25; Football '25; Class Pres. '23, '24; Annual Editor-in-Chief '24; Class Play '25.



SENIOR HISTORY

Our High School days are fast drawing to a close and as is customary, we, the class of '25, will leave our brief history on the pages of this Annual.

We entered High School in the fall of '21 with an enrollment of twenty-eight. Out of this number six had passed the first eight years of their training side by side in the Bement schools. Before achieving anything we found it necessary to organize and Selby Clark was elected as our head with Carleton Smith acting as Secretary-Treasurer and Miss Tinkham as our Class Advisor.

Almost before we realized it our first year was at an end but our experiences during this period had given us confidence so that we looked forward to the coming year with a great deal of enthusiasm.

As Sophomores we were raised to a high plane of intellectual supremacy, for during this year our class had the highest average, the most A's, and the fewest "flunks." This year Lew Wilkinson was elected President, with the following officers: Armand Richard, Vice-President; Dallas Hill, Secretary-Treasurer; Class Advisor, Miss Barker. We were joined by Ruth Stoerger and Ellen Nolan, but several of our members left us. We had ceased to be timid Freshmen and began to take part in the social activities of the school, enjoying the usual parties and the annual picnic. Thus our Sophomore year was spent.

At last we were real honest-to-goodness upper classmen! As Juniors, we again chose Lew Wilkinson as our Presiding Officer with Florence Dunn serving as Vice-President and Dallas Hill as Secretary-Treasurer. We were guided in our undertakings by Miss Bancroft. Three new members were added to the class, namely Aimee Brandenburg, Frances O'Brien, and Blanche Longbons. We were sorry and yet proud to see one of our members, Carleton Smith, leave us and graduate with the class of '24. His credits were such that he was permitted to graduate in three years. There were two outstanding events during this year: first, the Junior-Senior banquet, which was a genuine success, and second, the publishing of the first Class Annual since 1914. Of course, there were parties held in the homes of different members, and a picnic in the spring, which delightful event ended our Junior year.

Seniors! and only one more short year of High School life. Our officers this year were: Dallas Hill, President; Blanche Longbons, Vice-President; and Clarence Marlow, Secretary-Treasurer. Mr. Harrison and Mr. McClellan were appointed to advise us. During this last year of our High School life we were forsaken by Ellen Nolan, Marguerite Cannon and Armand Richard, but as if to make up for them we welcomed Ruth Stirrett, Dorothy Noe, Mildred Catlin, Raymond Quinlan and Donald Ryan. During this year several of our members distinguished themselves in athletics. The main social event of this year was a Hallowe'en party at which we entertained the Juniors.

And now we shall soon separate, each to play his part in the outside world but I am sure that not one of us will ever forget the happy times and beautiful friendships enjoyed in dear old B. T. H. S.

B. M. L.

PROPHECY

Foreword:

1945! Good old Father Time has certainly wrought great changes in the last two decades. Where is the old One-Horse Shay? And where is the Locomotive with its network of rail? And, still again where is the Automobile? Gaze up into the sky and you will no longer ask these questions.

Above all the large cities fly twenty-four-hour coast-to-coast dirigibles, equipped with the latest of modern traveling conveniences. Here comes a buzzing squadron of army planes with several observation balloons in hot pursuit and there goes a loaded moving van aeroplane, preceded by a de luxe special air liner for the wealthy directors of some aeroplane route. And here and there and everywhere, flitting in all directions, in and out amongst the larger craft like humming bees, are innumerable private planes of every conceivable description. The conquest has been made by air and the ends of the world lie at our feet.

Where are the telephones and cablegraphs with their millions of wires and cables? They have been abolished by the astounding utilization of radio, which, like the aeroplane, has also conquered the ends of the globe.

We, as a nation, day by day, and year by year, are growing weaker and wiser. We are living in an age of wisdom and revolution. We are getting fickle; life is becoming too easy for us. Industry has been revolutionized and simplified and we are lazy. Luckily, some of us premeditate the destruction of our nation by the great outburst of civilization, and try our hardest to overcome existing evils, foreshadowing the downfall of that civilization. But, how like some of us to live only for the present, never glimpsing into or worrying about the future. We are seized into the whirlwind of life and we choose the smoothest paths and think more of the gilded than the worth-while byways of contentment and happiness. Remember these few foregoing lines of philosophy as we follow our classmates through the twentieth milestone of their self-dependence.

The sun had set and dusk was just setting in, when we rounded a bend in a lonely country road. We were afoot—tired, footsore and weary. That morning we had been dispatched by a social aspiring woman of the East on a secret mission, which was to take us across the continent, so we were required to walk to a nearby city to procure an aeroplane for the trip. Just as we had rounded the bend, there sprang out of the bushes by the roadside, with lightning-like rapidity, the hurling figure of a burly, raw-boned man. He stood before us attired in green corduroys, a flaming red jersey, and an ill fitting felt hat, that concealed most of his features. A grimy handkerchief covered his black-grizzled beard. A low guttural command issued from his throat, "Hands up, you bums!" Again, the familiar voice spoke a harsh command and all at once it dawned upon us that our old classmate, Lew Wilkinson, was standing before us. At the same moment, he recognized us and before we could speak he darted back into the bushes and vanished. We never saw him again and to this day, the intent of his ambush has to us remained a mystery.

We camped that night in hobo style under a large spreading oak tree by the wayside. The following morning at daybreak, we entered the large middle western metropolis from which we were to proceed by aeroplane. We were not only dirty and tired but ravenously hungry, so the first place we struck out for was a restaurant. Behind a counter, was a sleek black

BETOHI

headed man, whom we immediately recognized as Raymond Quinlan. He did not know who we were. Evidently his memory was failing. When we told him our names, he was very much surprised. He greeted us cordially and conducted us into the kitchen where he introduced us to his gray-haired wife, who stood toiling and sweating over a red hot cooking range. She turned to greet us. "Blanche!" we both echoed at once, "Is it really you?" Quinlan and his wife invited us to dinner and we had quite a talk, in spite of the noise made by the younger Quinlans. In the course of the conversation, they told us that Guynell Creel was now quite a successful imitator of birds and beasts. It seemed as though some theatrical manager had heard her tinkling, weird cackle and recognized her unlimited possibilities. Then followed a vaudeville tour, featuring her in bird song and animal imitations.

After dinner, we strolled down one of the main thoroughfares of the city. A wild looking demaniacal man gesticulating wildly from his perch on a soap box attracted our attention. A curious crowd surrounded him and his patient, sad-faced wife. We were about to pass on by, when the man beckoned to us. In a thundering voice that nearly shook us off our feet, he told us that the hour of redemption and resurrection was near at hand, that our souls needed saving, and that unless we heeded his advice we were doomed to the torments of Everlasting Fire! We were dumbfounded, absolutely dumbfounded. The fanatical soap-box preacher was none other than Selby Clark and the woman who accompanied him was Frances O'Brien. We passed on leaving our identity undisclosed to the poor man. As we rounded the corner, we heard his mighty voice rise in a religious anthem and that was the last we saw of him.

The next thing of special interest that we noted along the street was a dime museum. We entered and began to take in the attractions. In one room on exhibition was "Leano," the tallest man in the world. Gazing up at this elongated figure, we recognized the jolly face of Claude Walker. His long, lanky body reminded us of Harold Murphy and when we asked him where Spike was, he laughed loud and long. Finally, when he was able, he jokingly told us that poor Spike had been caught in a Kansas twister, sucked up into a straw, and blown away and that he was never seen nor heard of since. Claude confessed that he was afraid to go out into a storm now, for fear the same fate would overtake him.

In large letters above another door, we read the following: "Pay a Dime, Secure the Chance of Your Lifetime, and See 'Tiny' the Baby Midget." We went in and saw seated on an elevated platform a wee little lady. "Irene Trent!" we ejaculated—"What under the name of sun has happened!" Poor Irene—she had shrunk into almost nothing. There she stood, three feet high and as lean as a rail. We continued on and entered the gymnastic section of the building. Two dare-devil acrobats were performing hair-raising stunts at a dizzy height. To our extreme amazement we were informed that they were the "Fisher Sisters" Helen and Katherine.

Before leaving the museum, we decided to have our fortunes told by "Venus, the Gypsy Woman." We entered the booth and subjected ourselves to her mystic powers. She told us where we were from, what our names were, and where we were going. The future, she said, held a hard fall in store for us. At the point of our departure, she lifted up her veil and laughed. She was Mary Henebry. As it was mid-afternoon and as we were anxious to be on our way again we bid her adieu, and left the museum.

Fifteen minutes later, we were sailing westward in our newly purchased aeroplane. We traveled until dusk, then descended and alighted

BETOHI

in a field near a farm house, located on the outskirts of a town. Arriving at the house, after leaving our aeroplane in the field, we halted in front of a large bay window. Seated in a large Morris chair was John Glynn and perched beside him, her arms entwined lovingly around his neck was Josephine McGrath, his new bride. So, this couple had at last found peace and happiness together after twenty years of aimless wandering. Smack! We felt like mean intruders, so we left for town, to spend the night.

After supper that evening we attended a theatre. At the rise of the curtain, five lovely Hawaiian girls, attired in tropical costumes, tripped out upon the stage. From our box, we distinguished them as Ruth Taylor, Ruth Stoerger, Ruth Seitz, Ruth Stirrett and Florence Dunn. The latter, Florence Dunn, was manager and leader of the company of Four Ruths. She had developed them into fine aesthetic dancers and they displayed rare talent. Later, a frivolous, unreserved young woman danced out upon the stage and yodeled the latest song hits of the day. Time and again, she was applauded and called back. To our extreme amazement we discovered her to be the former refined and sedate Thelma Priestly, class of '25.

We arose early the next morning and walked back to our plane. John and Josephine were on deck to give us goodbye. They shook hands, bid us Godspeed, and we were off! Having been traveling about three hours, our eyes were attracted by two smaller planes on the far horizon with a round object between them. As we advanced closer we saw that it was Mildred Catlin and Dorothy Noe, playing air polo, the latest fad of the day.

The object was a gas inflated balloon, which they were buffeting back and forth with polo clubs. As we approached nearer, the ball floated in front of our plane. Neither one of them saw us and both darted toward the ball at the same moment—Crash! All three of our planes looped and nose dived down through space. Luckily for us we were above a huge straw stack and three of us escaped death and injury but when we began searching for poor Dorothy after coming to our senses we couldn't find her. She had been whirled into eternity by one of the propeller blades. We couldn't tell her shreds from those of the straw; so we erected a shaft at the base of the stack in memory of her gruesome destruction and sadly left the awful scene of the tragedy. We consoled her friend, Mildred, the best we could and left that afternoon for Podunk, California, our final destination, which was ten miles distant. In mid-afternoon we became very thirsty; so we stopped at a little green shuttered cottage by the wayside. In response to our knocking, a grey-haired spinster appeared at the door. Jumping Jehosaphat! Lucille McPherson! What in the world was she doing all by herself out here in the wide wastelands. She invited us in, gave us a cool refreshing drink, and literally talked her head off, asking us where our classmates were and what they were doing. She told us that Ellen Nolan had retired from school teaching to take up the duties and responsibilities of a home at San Diego. Lucille's was a woeful tale of sad disappointed love, resulting in her isolation from society. "He left me waiting at the altar ten years ago and I have been waiting ever since," and she wept bitterly at the memory. Several minutes later, as we trailed off down the road we looked back and saw her still standing in the doorway gazing broken-heartedly after our fast receding figures.

A mantle of darkness was creeping over Podunk, when we entered the city limits that evening. We were at our journey's end. In less than an hour, our purpose would be fulfilled, our mission completed, and we would be ready to back track for home.

BETOHI

That night under a glowing yellow moon, we stole across a lawn, toward a great imposing brick mansion. There came a faint rustling and murmuring from a nearby arbor and we stopped dead still in our tracks. We listened, and then shifted ourselves to a position directly behind the arbor.

Ah Fortunate, Luck, Opportunity, or what ever you want to call it was surely awaiting us. Peering through the foliage, we discerned a couple, sitting on a rustic bench, the moonlight streaming down upon them from a wide gap in the arbor. They were cooing in low tones like turtle doves but we could easily hear their conversation.

"And do you love me dearest?"

"Yes," whispered the scoundrel in a hoarse voice.

"And when will you marry me?"

"When I come back from the East, loved one," lied the husky voiced villian.

That was sufficient. There remained yet one more thing to do and our task would be ended. We hastened with all possible speed to the Western Union Radio Office and dispatched a night letter— and the letter read thus:

Podunk, California,
June 10, 1945.

Miss Frances Rose,
1112 Astoria Avenue,
Suburban Heights, Illinois,

Dear Miss Rose:

Your suspicions are justly founded. Your fiancee, Mr. Ryan is untrue to you. He has another woman on the string out here. Perhaps you remember her. She is Aimee Brandenburg, one of our classmates of the Class of '25. Would suggest that you break engagement with your betrothed at once, as he intends to come East, and marry your wealth, and leave the girl out here in the lurch.

Your faithful servants,

Hawkshaw and Hawkeye.

By CLARENCE MARLOW and DALLAS HILL,
Class of 1925.



SENIOR WILL

We the class of 1925 of the Bement Township High School, State of Illinois, realizing that we are soon to pass out of this place of education, do hereby make, declare, and publish this, our last will and testament, hereby revoking and making void all formed wills and promises by us at any time heretofore made.

To the faculty we give our sincere thanks for the thoughtfulness and attention which they have shown us at all times.

To the Juniors we leave our ability to give "spiffy" parties.

To the Sophomores, our perfectly good common sense, which we have displayed on all occasions.

To the Freshmen we leave our best wishes for their future success.

The various members of the class make the following individual bequests:

I, Aimee Brandenburg, do will and bequeath to Arthur Ball, my ability to tickle the ivories.

I, Mildred Catlin, do will and bequeath my interest in Atwood, to Helena O'Loughlin.

I, Selby Clark, do will and bequeath to Florence Leuschke, my languid way of moving.

I, Guynell Creel do will and bequeath my frequent visits to the post-office, to Helen Cole.

I, Florence Dunn, do will and bequeath my interest in Rexall Goods, to my sister Marguerite.

I, Helen Fisher, do will and bequeath to Ella Jones, my booklet on, "How to Win Tall Romeos."

I, Kathryn Fisher, do will and bequeath my rose-bud lips to Raymond Sanders.

I, John Glynn, do will and bequeath my curly hair to my brother Willie.

I, Dallas Hill, do will and bequeath my job as "flunkie" to the coach to Homer Mikeworth.

I, Mary Henebry, do will and bequeath my gum, deposited at odd times under my chair in the English room, to Howard Hill, in hopes that he will get the same chair next year.

I, Blanche Longbons, do will and bequeath my brother Virgil to Jeanette Piggott.

I, Clarence Marlow, do will and bequeath my clever methods of captivating women to Glenn Fairbanks.

I, Lucile McPherson, do will and bequeath my ability to pull A's to Melvin Miller.

I, Harold Murphy, do will and bequeath my name "Spike," to Nate Smith. (If he will only diet!)

I, Josephine McGrath, do will and bequeath my ability to skip classes to Doris Wiggins.

BETOHI

I, Ellen Nolan, do will and bequeath my ability to teach school to anyone, who stands in greatest need.

I, Dorothy Noe, do will and bequeath half the seat in my Buick roadster, to Troy Phillips.

I, Frances O'Brien, do will and bequeath my ability to do Physics Experiments to Joe Curry.

I, Raymond Quinlan, do will and bequeath, my testimony on, "How To Be Well Groomed" to Troy Phillips.

I, Donald Ryan, do will and bequeath my "grown-up airs" to Willard Durbin.

I, Frances Rose, do will and bequeath my calm and composed attitude to Pauline Sparks.

I, Ruth Seitz, do will and bequeath my coquettish ways to Iola Creel.

I, Ruth Stirret, do will and bequeath to Joe Sloan, some of my pep.

I, Ruth Stoeger, do will and bequeath to Nate Smith my book, "How to Become Popular."

I, Ruth Taylor, do will and bequeath my "man-winning ways" to Loretta Gallivan.

I, Irene Trent, do will and bequeath my leaflet, "How to Grow Slim," to "Candy Lamb."

I, Claude Walker, do will and bequeath to Harriet Kearney, my definition of the word, LOVE.

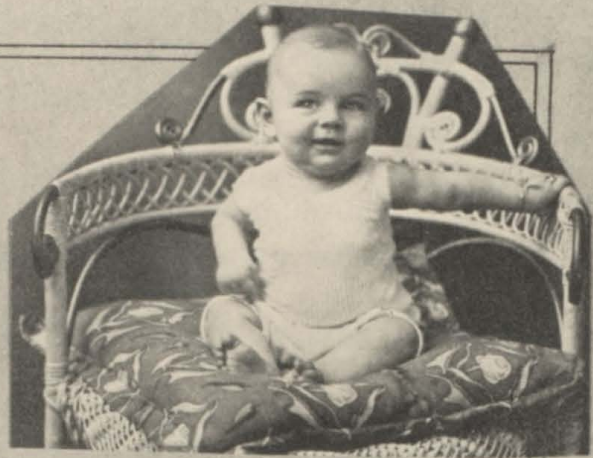
I, Thelma Priestly, do will and bequeath my future dates with "Handsome Juniors" to Bernadine Malkus.

I, Lew Wilkinson, do will and bequeath to Robert Body, my "self-made" laugh.

To this, our last will and testament, we the aforesaid Class of '25, do hereby set our hands and seal, this 4th day of February, A. D., Nineteen Hundred Twenty-five.

MEMBERS OF CLASS OF '25.

BETOHI



Three Views of Claude



Carroll



Lo!
Snooks



Donald



Irene

Viv. with her
hair bobbed



Rodgers All



Lew



JUNIOR OFFICERS

Glen Durbin*President*
Vivian Reading*Vice-President*
Lola Swick*Secretary and Treasurer*
Miss Adams*Class Adviser*

BETOHI

JUNIOR CLASS



First row (left to right)—Lloyd Jones, Raymond Sanders, James Nally, Caroll Soper, Brown Byerline, Miss Adams (class adviser), Cyril Shively, Harold Adams, Troy Phillips, John Loftus, Glenn Fairbanks, William Davies, Ralph Sheppard.

Second row (left to right)—Ruby Sparks, Helen Cole, Doris Wiggins, Marguerite Belmont, Mary Tabaka, Loretta Gallivan, Beulah Fay, Lois Fristoe, Mamie Wall, Bernice Shonkwiler, Vivian Reading, Florence Leuschke, Lillie Conlin, Elizabeth Dobson, Ruby Brandenburg.

Third row (left to right)—Ralph Shively, Phyllis Tabaka, Joseph Sloan, Lola Swick, Nate Smith, Lenora Beebee, Glen Durbin, (president), Martha Davies, Eldo Pope, Ruth Harshbarger, Owen Hanna, Ella Jones, Robert Body, Thelma Senteney.

JUNIOR CLASS HISTORY

Three years ago, the class of '26 with forty pupils started on their voyage of knowledge. We begin far apart but our Stream of Slender Wits have finally joined together to form one strong, though small current known as the Junior Class. During our Freshman year, we appointed as leader Miss Duncan and Mr. Appling, and chose John Loftus, President; Florence Leuschke, Vice-President; Mary Tabaka, Secretary-Treasurer.

Eldo Pope, Nate Smith, Harold Webb, and Geo. Silvers, found positions on the Bement Football team.

We continued our voyage our Sophomore year. This year we began with forty-four members but several dropped out. Miss Barker was our Supervisor; Florence Leuschke, President; John Loftus, Vice-President; Doris Wiggans, Secretary; and Glen Fairbanks, Treasurer. Other members of our class helped to make the Annual and newspaper a success.

Eldo Pope and Nate Smith won a place of high rank on the football team. We had encountered many rapids and whirlpools such as Geometry and English, but thus far we were safe. With the first half of our voyage completed, we were launched on a smooth and placid sea.

The Junior Class chose Miss Adams as Advisor; Glen Durbin as President; Vivian Reading as Vice-President; and Lola Swick as Secretary-Treasurer.

This year the Junior Class is called upon for more work such as putting out the annual and the Junior-Senior banquet. Many of our members have honored places on the football and basketball teams.

The gates of knowledge will open to all those who cross the perilous sea; just one more sail and we will reach our destination.

MARY TABAKA.

BETOHI



Gertie



Sophs



Joe



Lil.



A Sr. Belle



La Place

Carroll



Swicky



Sophs.



Two Ruths



SOPHOMORE OFFICERS

Iola Creel*President*
Stanley Bodman*Vice-President*
Francis McCabe*Secretary and Treasurer*
Miss Niedermeyer*Class Adviser*

BETOHI

SOPHOMORE CLASS



Top row (left to right)—Arthur Quinlan, Arthur Ball, Homer Daugherty, Miss Niedermeyer (class advisor), Ward Alexander, Winifred Bowman, Florence Clodfelter, Gertrude Clark, Mildred Selle.

Middle row—Clarence Minor, Lemen Mikeworth, Miriam Harrell, Ruth Grennan, Fern Peck, Marguerite Dunn, Zona Becker, Jeanette Piggott, Grace Daugherty, Ella Hill, Rose Loudenback, Mildred Ruddock.

Bottom row—Pauline Morgan, Everett Ernst, Helena O'Loughlin, Stanley Bodman, Iola Creel (president), Francis McCabe, Beulah Minor, Donald Medaris, Helen Shonkwiler, Joe Curry, Zola Wempen.

Joe Curry

THE SOPHOMORE CLASS HISTORY

In the autumn of 1923 a group of pupils, twenty-seven in number, approached the ladder of Education of the B. T. H. S., our intentions being firmly fixed to gain the summit step by step.

With our officers, Florence Clodfelter, President; Myrtle Kirkland, Vice-President; Francis McCabe, Secretary; Lyle Campbell, Treasurer; and Miss Day, Counselor, we took our stand on the first step of the ladder undaunted and undismayed.

Soon accustomed to our rank of position among our upper classmen, we adopted the law of "Bravery" which proved helpful when problems of difficulty confronted us, wherefore we assumed our task as reliable Freshmen.

This year we ascended one step higher on the ladder of Education becoming Sophomores, Lyle Campbell and Nina Webb joined other ranks, but our team increased with the uniting of Helena O'Loughlin, Fern Peck, Zona Becker, Arthur Quinlan, and Winiford Bowman.

We chose Iola Creel, President; Stanley Bodman, Vice-President; Francis McCabe, Secretary and Treasurer; Miss Niedermeyer, Class Adviser. We also elected Ward Alexander athletic representative on the Board of Control and Jeanette Piggott, class editor for The Bement Register.

Ward Alexander, Homer Daugherty, Stanley Bodman, Joe Curry, and Francis McCabe proved their ability as successful football players.

We mastered our work with a zealous determination and are ready to encounter our third step on the ladder of Education.

BETOHI



Sophs.



Chow

only Joe



Don
and
Joe



Freshies



Bob and Doris



Armand



Marguerite



FRESHMAN OFFICERS

Camp Bower *President*
Lewis Balding *Vice-President*
Duane Allen *Secretary and Treasurer*
Miss Archibold *Class Adviser*

BETOHI

FRESHMAN CLASS



Top row (left to right)—Bernadine Malkus, Harriet Kearney, Verne O'Brien, Louie Gardner, Earl Cox, Duane Gulliford, Carl Lamb, Melvin Rodgers, Miss Archibold (class adviser), John Darby, Louis Balding, Burdell Bell, Hugh Manny, Wayne Jackson, Virgil Longbons, May Ernst, Helen Boone.

Second row (left to right)—Bernice Grant, Opal Allen, Margaret Tabaka, Leona Tabaka, Sylvia Vrooman, Alice Seitz, Mabel Patrick, Zelma Busick, Loretta Bogue, Lelah Phillips, Opal Gardner, Louise Jones, Dorothy Pierce, Catherine Taylor, Edith Driskill, Emma Baumann, Lorraine Reading, Lurene Rodgers, Nellie Fristoe.

Third row (left to right)—Norma Wall, Allen Smith, Ida Sanders, Robert Fisher, Pauline Sparks, Camp Bower, (president), Dorothy Griswold, William Coffin, Virginia Totten, Russel Rodgers, Leo Wildman, Ernest Dye, Hazel Fristoe, Glenn Rodgers.

Bottom row (left to right)—Duane Allen, Roy Hammon, Melvin Miller, Jacob Ard, Edward Monahan, Harry Manny, Donald Soper, Willard Durbin, Joseph Clark, Russel Proctor, Everett Halstead, Glenn Taber.

FRESHMAN CLASS HISTORY

In the fall of the year Nineteen Hundred and Sixteen a ship-load of children glided out of the quiet port to begin a long voyage. The first year the ship sailed slowly through stormy seas. As the time passed the troubled water calmed and the ship glided toward a port. There the sailors were received, recommended to a larger ship and given certificates enabling them to start on another and faster voyage.

Upon boarding the new ship the old crew found that they were to sail with many others. The officers put in command were Camp Bower, Captain; Lewis Balding, First Lieutenant; Robert Fisher, Ensign; and Duane Allen, Midshipman. The ship left port one morning in September, Nineteen Hundred and Twenty-four. Several stops for pleasure were made on some islands that were passed. On rounding the Cape of Good Hope some of the crew went stray, but most of them were destined for smoother waters.

They are now passing the lighthouse which marks the end of their first year's journey, and are passing on into the next year.

RUSSELL PROCTOR.

BETOHI



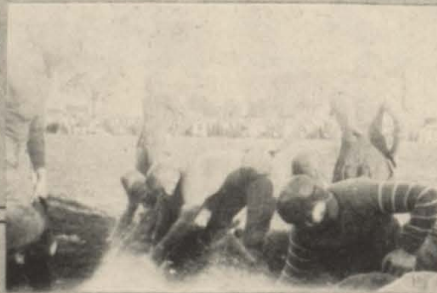
Captain



Coach



Senior Team of '25"

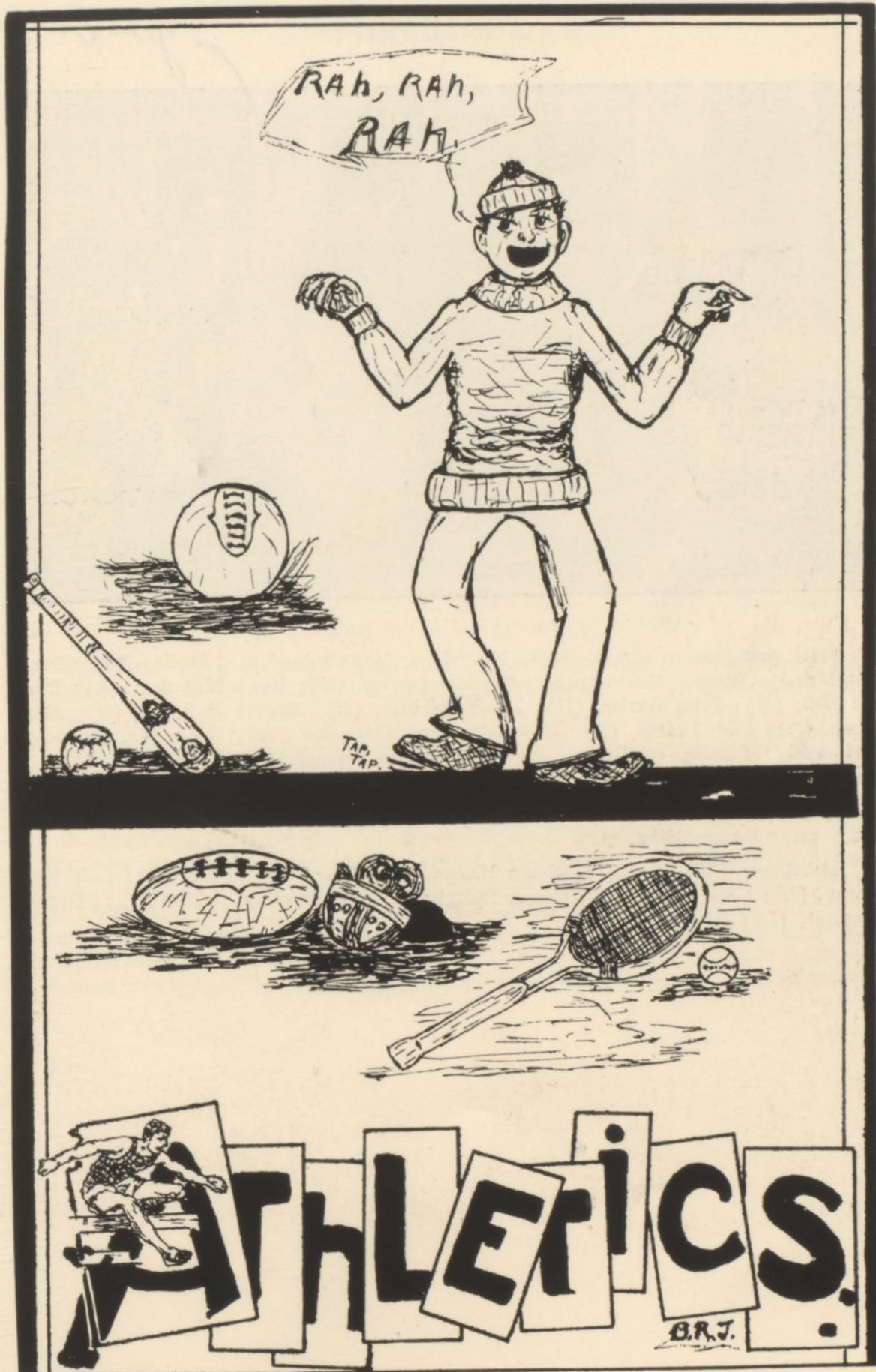


Bement vs Arwood



Bement vs Arthur

BETOHI



BETOHI

FOOTBALL

Joe Curry



First row (left to right)—G. B. McClellan, (superintendent); Dallas Hill, (Business Mgr.); Clarence Marlow, (N); William Davies, (N); Hugh Manning, (L); Burdell Bell, (N); John Darby, (N); Louis Balding, (N); Melvin Rodgers, (N); Carl Lamb, (N); John Loftus, (N); Russel Rodgers, (N); Joe Curry, (N); Mr. Harrison, (principal); Claude Walker, (L); E. J. Sollors, (coach.)

Second row (left to right)—Donald Soper (N); Raymond Sanders, (N); Selby Clark, (L); Francis McCabe, Eldo Pope, (captain), (L); Joseph Sloan, (L); Robert Body, (N); Duane Allen, (L.)

Third row (left to right)—Owen Hanna, (L); Ward Alexander, (L); Lew Wilkinson, (L); Nate Smith, (L); Homer Daugherty, (N); Stanley Bodman, (L); Brown Byerline, (L); John Glynn, (L.)

FOOTBALL REVIEW

We started the football season with a new coach, Mr. Jack Sollars of Millikin.

Bement's first game was with Newman at Newman, and Bement's green team, of only 3 letter men, was not quite in shape and was beaten 6-0.

The next week Atwood was Bement's victim at Atwood at the fall festival. Bement in the last 5 years had never beaten Atwood at the fall festival, but the Sollars warriors were keyed up and they won 6-3.

Captain Pope winning on a 35 yard forward pass for a touchdown.

Farmer City came to Bement and the diminutive Weedman of Farmer City went over for the sole touchdown of the game. Score 6-0.

Bement won the 2nd victory of the season over Arthur by Clark's sensational 80 yard run. Score 20-0.

Illio polis came to Bement the next week with a determination to win but the Sollars aggregation were too fast for the visitors and Bement came off 20-6 winner.

The next week Sullivan came to Bement with their heavyweights and left for home with a 20-0 victory to their credit. Bement was unable to stop the passing and line plunging of the invading eleven.

The next week Atwood came to Bement to avenge her former defeat and succeeded, but only after a hard fought battle. The final score was 17-12.

The next week Bement went to Lovington and was defeated in a hard fought game 13-7. The score was a tie until Percy, Lovington halfback got off for a 50 yard run.

Bement met Monticello, her age old rival at Bement. Bement was within scoring distance twice but lacked the punch to put it over. Allen, Bement's halfback made repeated gains but the final score was 6-0. This ended Bement's football season, altho not a success in scores and victories, it was a success when the material is taken into consideration and the sportsmanship shown by the local eleven is considered. Losing only three lettermen next year, Bement has good prospects for a good football team.

BETOHI

FOOTBALL LINEUP

Captain Pope	Fullback
Hanna	Right End
Alexander	Right Tackle
Walker, Wilkinson	Right Guard
Smith	Center
Glynn	Left Guard
Bodman	Left Tackle
Byerline	Left End
Allen	Right Halfback
Manny	Fullback
Sloan	Left Halfback
Clark	Quarterback

SUBSTITUTES

M. Rodgers, Body, Curry
 Bell, Daugherty, Marlow
 McCabe, Darby, Sanders

The Season's Games

Sept. 20—Newman	6	Bement.....	0
Sept. 26—Atwood	3	Bement.....	6
Oct. 3—Farmer City	6	Bement.....	0
Oct. 10—Arthur	0	Bement.....	20
Oct. 17—Illiopolis	6	Bement.....	20
Oct. 24—Sullivan	20	Bement.....	0
Oct. 31—Mahomet	26	Bement.....	0
Nov. 7—Lovington	13	Bement.....	7
Nov. 14—Atwood	17	Bement.....	12
Nov. 25—Monticello	6	Bement.....	0
	83		65

BETOHI

BASKETBALL



Standing (left to right)—James Nally, (L); Arthur Ball, (N); E. J. Sollars, (coach); Burdell Bell, (N); Duane Allen, (N).

Sitting (left to right)—Cyril Shively, (L); Robert Body, (L); Brown Byerline, (captain), (L); Stanley Bodman, (L); Howard Hill, (L.)



BASKETBALL

It can safely be said that Bement High School had a successful season, all things considered. With only one letter man back and only fair material ready, Coach Sollars did wonderfully well.

Bement first encountered Cerro Gordo who had practiced from September but Bement beat them 17-9, Bodman ringing up 5 field goals.

Bement then encountered the strong Tuscola quintet at Tuscola and were swamped 28-16, Bodman again starring with 11 points.

Sadorous met Bement at Bement on Bement's off night beating them 39-17, Bodman and Allen coming through with 12 points.

The Purple and White met Clinton at home and were beaten by the score of 24-13.

Bement then went to Atwood and was beaten by the strong Atwood aggregation 30-19, Kamm and Weatherford starring for the opponents.

Sullivan was the next opponent and was doped the winner but Bement came through with a win of 13-11 with the newly eligible Nally in the lineup.

The Purple and White then journeyed to Monticello where the strong Monticello quintet, headed by Catlin handed Bement a beating of 28-13.

Bement again encountered Tuscola and was beaten but not before Bement had held a lead until the last quarter. The score was 24-27.

The Piatt county tourney has been held three years and Bement had never up to this year even won the first game. Things didn't look so good this year. Monticello had beaten Bement by more than double score but Bement was keyed up and won in an overtime period 20-22. This enabled them to play the second night with Atwood.

Atwood had barely nosed out Mansfield 17-14 and Bement's prospects looked bright but Kamm and Weatherford were hot. At the half the score was 12-4. Bement staged a last quarter rally and at the end of the third quarter led 19-16 but Arnett, Atwood's guard and Kamm of Atwood sunk two long ones and won the tourney 20-19.

Bement avenged her first defeat by Monticello by defeating them 29-22. Byerline and Bodman getting 25 points between them.

The Purple and White quintet started on a two day trip to Weldon and Clinton. At Weldon they played in a cracker box but won in nice fashion 29-10, Captain Byerline collecting twenty-one points.

At Clinton they repeated the previous night's performance with a new star, Bob Body ringing up thirteen points of the 38-17 score. Thus ended the second trip in nice fashion.

BETOHI

The next week Atwood came to Bement and to all appearances, would have been defeated but for the untimely accident to Brown's knee and Bement had to content herself with a 24-18 defeat.

Bement again set out on a two day trip with Captain Byerline in reserve. The Nokomis tossers were too much for the Bement five and Bement received a 30-14 beating.

The next night Pana was out for blood in her big gym, and got it in the 26-15 beating she gave to the Bement tossers. This was the last game before the District Tournament.

In the District Tournament, Bement drew their old time rival Atwood. Atwood had beaten Bement three times, two scheduled games and in the Piatt County Tournament. In the first quarter Byerline made three baskets and at the end it was 6-6. But Atwood got hot and couldn't miss and at the half held a good lead and in the second half were never headed. The final score was 28-16.

Brown Byerline got on the second all star team.

Byerline	Right Forward (Captain)
Body	Left Forward
Bodman	Center
Hill	Right Guard
Shively	Left Guard
Bell	Guard
Allen	Forward
Ball	Center
Nally	Forward



BASKETBALL SCHEDULE

Dec. 4—Bement.....17	Cerro Gordo 9
Dec. 12—Bement.....16	Tuscola28
Dec. 17—Bement.....17	Sadorus39
Jan. 9—Bement.....13	Clinton24
Jan. 13—Bement.....19	Atwood30
Jan. 16—Bement.....13	Sullivan11
Jan. 21—Bement.....13	Monticello28
Jan. 23—Bement.....22	Tuscola27
Feb. 4—Bement.....17	Sadorus24
Feb. 6—Bement.....29	Monticello22
Feb. 12—Bement.....29	Weldon10
Feb. 13—Bement.....38	Clinton17
Feb. 20—Bement.....18	Atwood24
Feb. 25—Bement.....14	Nokomis30
Feb. 26—Bement.....15	Pana26
Total Points290349

District Tournament

AT DECATUR

Mar. 5—Bement.....16	Atwood28
----------------------	----------------

County Tournament

AT MONTICELLO

Bement.....22	Monticello20
Bement.....18	Atwood19

BETOHI



BETONI





DELPHIAN SOCIETY

Top row (left to right)—Everett Ernst, Eldo Pope, Duane Gulliford, Donald Ryan, Claude Walker, Virgil Longbons, Hugh Manny, Donald Medaris, Homer Daugherty, Ward Alexander, Melvin Rodgers, Nate Smith, Harold Murphy, Florence Clodfelter, Ruth Grennan, Ruby Brandenburg, Elizabeth Dobson, Florence Leuschke,

Second row—Winifred Bowman, Helen Fisher, Florence Dunn, Irene Trent, Doris Wiggins, Marguerite Belmont, Frances Rose, Mary Tabaka, Loretta Gallivan, Leona Tabaka, Beulah Fay, Lenora Beebee, Zelma Busick, Iola Creel, Helen Shonkwiler, Lurene Rodgers, Nellie Fristoe, Lelah Phillips, Lorraine Reading, Emma Baumann, Alice Seitz.

Third row—Lloyd Jones, Opal Gardner, Rose Loudenback, Catherine Taylor, Dorothy Pierce, Opal Allen, Helen Boone, Bernadine Malkus, Pauline Sparks, Norma Wall, Mildred Catlin, Dorothy Noe, Martha Davies, Ruth Harshbarger, Ella Jones, Beulah Minor, Ruth Stirrett, Thelma Senteney.

Bottom row—Robert Body, Owen Hanna, Verne O'Brien, Raymond Quinlan, Carroll Soper, Lew Wilkinson, Joseph Sloan, Raymond Sanders, Glenn Tabor, Everett Halstead, Edward Monahan, Lemen Mikeworth, Ernest Dye, Ralph Shively, Willard Durbin, Joseph Clark, Lewis Balding, Earl Cox.

BETOHI



Goodman



PHILOMATHEAN SOCIETY

Top row (left to right)—Glenn Rodgers, Jacob Ard, John Darby, Burdell Bell, Russel Rodgers, Clarence Marlow, Carl Lamb, Arthur Ball, James Nally, Selby Clark, William Davies, Wayne Jackson, Brown Byerline, Stanley Bodman, Glenn Fairbanks, John Loftus, Troy Phillips, Zola Wempen, Mabel Patrick, Sylvia Vrooman, Homer Mikeworth.

Second row—Joe Curry, Vivian Reading, Blanche Longbons, Lillie Conlin, Gertrude Clark, Mary Henebry, Lucile McPherson, Guynell Creel, Aimee Brandenburg, Helena O'Loughlin, Mamie Wall, Francis O'Brien, Ruth Seitz, Ruth Taylor, Bernice Grant, Ida Sanders, Louise Jones, Harriet Kearney, Helen Cole, Ruby Sparks, Margaret Tabaka, Leo Wildman, Mildred Ruddock, Allen Smith.

Third row—Jeanette Piggott, Grace Daugherty, Miriam Harrell, Mildred Selle, Lois Fristoe, Lola Swick, Josephine McGrath, Katherine Fisher, Dorothy Griswold, Virginia Totten, Loretta Bogue, Bernice Shonkwiler, Pauline Morgan, Hazel Fristoe, May Ernst, Phyllis Tabaka, Marguerite Dunn, Zona Becker, Fern Peck, Edith Driskill.

Bottom row—Ralph Sheppard, Duane Allen, Robert Fisher, Louie Gardner, William Coffin, Arthur Quinlan, Russel Proctor, Roy Hammon, Camp Bower, Harry Manny, Clarence Minor, Melvin Miller, Donald Soper, Francis McCabe, Dallas Hill, Glen Durbin, Harold Adams, Cyril Shively.



LITERARY SOCIETY

The students of the High School were divided into two groups, called the Literary Society. These programs were given in order to increase the students' facility for public speaking. The programs are educational, interesting and entertaining. Following are the officers for each society for the year 1924-1925.

THE PHILOMATHEAN SOCIETY

Dallas Hill*President*
Lucille McPherson*Critic*

THE DELPHIAN SOCIETY

Lew Wilkinson*President*
Owen Hanna*Critic*

THE DELPHIAN SOCIETY THE FIRST TO ENTERTAIN

The Delphian Society entertained the Philamathean Society at 2:30 o'clock Friday afternoon, November 6.

The program was as follows:

Two selections by the orchestra.

"When Dear Grandmother Dreams" Glee Club
Current Event Topics—Lemen Mikeworth, Donald Soper, Thelma Sen-
teney.

Vocal Solo—"Jelly Roll" and "I Lost My Dog" Irene Trent

Original Story Ruth Harshbarger

Reading Hugh Manny

Reading Loyd Jones

PLAY—"LADY AND TWO CROOKS"

Cast of Characters

Rich Lady Florence Leuschke

Crook Harold Murphy

Maid Francis Rose

Nurse Helen Fisher

This program was under the direction of Miss Archibold.

BETOHI

THE PHILOMATHEAN SOCIETY ENTERTAINS

The Philomathean Society on Tuesday at 3:00 gave its first program. The program was enjoyed by all that attended it. Following is the program:

Orchestra—Two Selections

“Queen Of the North” James Fulton
 “The State Line” James Fulton

Current Topics:

“A House On Stilts” Grace Daugherty
 “Peek-a-Boo Island” May Ernst
 “The Problem of the French War Debt” Russel Proctor
 “Sketch of Davy Crockett” Duane Allen

Vocal selections:

“Memory Lane”
 “Put Away a Little Ray of Sunshine For a Rainy Day” Arthur Ball

Reading—“The Littlest Rebel” Miriam Harrell

Shadow-graph: Comic characters animated—Spark Plug, Barney Google, Ruddy, Happy Hooligan, Maud the Mule, Jiggs, Maggie and others.

Shadow-graph dialogue—Stanley Bodman, James Nally and Bernadine Malkus.

A Take-off on the Faculty.

The Mogul (Mr. McClellan) Stanley Bodman
 Mr. Harrison Ralph Sheppard
 Mr. Maxwell James Nally
 Mr. Sollars Homer Mikeworth
 Mr. Kronsagen Glen Durbin
 Miss Adams Ida Sanders
 Miss Roberts Mary Henebry
 Miss Niedermeyer Vivian Reading
 Miss Archibold Ruby Sparks
 Miss Collet Bernice Grant

BETOHI

GLEE CLUB



Top row (left to right)—Donald Ryan, Raymond Sanders, Troy Phillips, Francis McCabe, Ralph Probst, Harold Murphy, Doris Wiggins, Marguerite Belmont, Frances Rose, May Ernst, Hazel Fristoe Opal Gardner, Opal Allen, Helen Boone, Raymond Quinlan.

Middle row—Emma Baumann, Lorraine Reading, Beulah Fay, Miriam Harrell, Mildred Catlin, Lois Fristoe, Pauline Morgan, Loretta Gallivan, Helen Fisher, Blanche Longbons, Lillie Conlin, Aimee Brandenburg, Bernice Grant, Ida Sanders, Virgil Longbons, Nellie Fristoe, Arthur Ball, Norma Wall, James Nally.

Bottom row—Pauline Sparks, Ruby Sparks, Ruby Brandenburg, Elizabeth Dobson, Florence Leuschke, Marguerite Dunn, Vivian Reading, Miss Collett (Instructor), Irene Trent, Lola Swick, Fern Peck, Helena O'Loughlin, Zona Becker, Bernadine Malkus, Arthur Quinlan.



THE GLEE CLUB

We feel that the Glee Club of this year has been a grand success under the excellent leadership of Miss Mary Collett. They have sung successfully at all events and we appreciate the willingness and talent of the students and the earnest co-operation of their leader.

“Love Pirates of Hawaii” was the opretta given this year.

Dorothy Dear—Daughter of Plantation Manager	Frances Rose
Miss Primer—Teacher of Private School of Girls	Mildred Catlin
Lehua	Hawaiian girls, daughters of rich plantation owners
Karlanani	
Lilinoe	
Maile	
Billy Wood, Lieut., U. S. Cruiser Tennessee	Brown Byerline
Pirate Chief, Heartless Pirate	Harold Murphy
Scary, Pirate	Claude Walker

Chorus of Hawaiian Girls: Marguerite Belmont, Doris Wiggins, Blanche Longbons, Helen Fisher, May Ernst, Lorraine Reading, Opal Allen, Bernice Grant, Ida Sanders, Miriam Harrell, Lillie Conlin, Helen Boone.

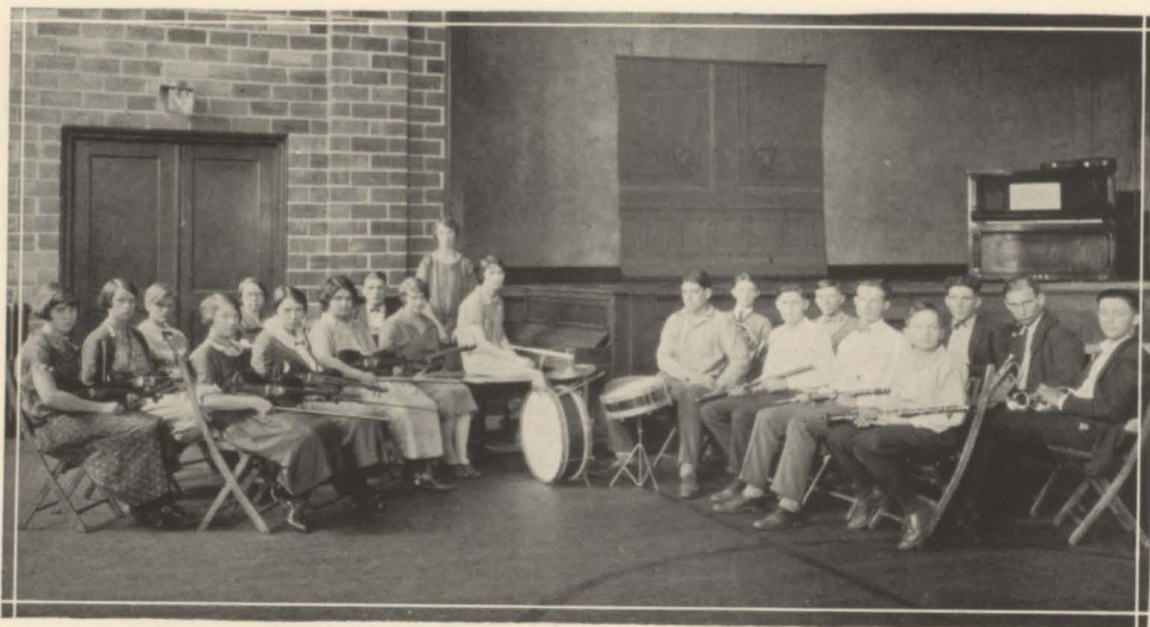
Chorus of Pirates: Arthur Ball, Troy Phyllips, Donald Ryan, Raymond Quinlin, Raymond Sanders, Virgil Longbons, Arthur Quinlin, James Nally.

Costumes: Miss Ruth Bancroft.

Music: Mrs. G. B. McClellan.

BETOHI

ORCHESTRA



Back row (left to right)—Opal Gardner, Bernadine Malkus, Florence Leuschke, Guynell Creel, Ralph Probst.

Front row—Pauline Morgan, Frances Rose, Lola Swick, Helena O'Loughlin.

Back row (right side)—Burdell Bell, Glenn Fairbanks, John Glynn, William Glynn, Harold Murphy.

Front row—Donald Soper, Carroll Soper, Allen Smith, James Nally.

At piano—Aimee Brandenburg. Standing—Miss Collett, director. Not pictured—Thelma Priestly.



OUR ORCHESTRA

Our orchestra is a delightful and entertaining crowd of syncopaters. They have played for the various events through the year including both literary programs. "Delphian and Pilomathean," the operetta, "Love Pirates of Hawaii," the Senior play, "Come Out of the Kitchen," and at the "Commencement." Throughout the year they have been a success, with their untiring efforts to help the B. T. H. S.

BETOHI

LATIN CLUB



Top row (left to right)—Miss Roberts, (teacher), Stanley Bodman, William Davies, Homer Mikeworth, (president), Owen Hanna, Lemen Mikeworth, Burdell Bell, Everett Ernst.

Middle row—Mable Patrick, Emma Baumann, Florence Clodfelter, Ruth Grenman, Mamie Wall, Helen Cole, Doris Wiggins, Opal Allen, Helen Boone, Bernadine Malkus, Ida Sanders.

Third row—Camp Bower, Ruby Sparks, Miriam Harrell, Pauline Sparks, Bernice Grant, Bernice Shonkwiler, May Ernst, Russel Proctor.

Bottom row—Harry Manny, Sylvia Vrooman, Nellie Fristoe, Ruth Harshbarger, Lurene Rodgers, Hazel Fristoe, Glenn Tabor.



Seniors Choose

“COME OUT OF THE KITCHEN”

For Class Play April 3

CAST SELECTED BY TRYOUTS

“Come Out of the Kitchen” is a charming comedy in three acts. It is adapted for the stage by A. E. Thomas from the story of the same name by Alice Duer Miller.

The story is written around a Virginia family of the old aristocracy, by the name of Dangerfield, who, finding themselves temporarily embarrassed, decide to rent their magnificent home to a rich Yankee. One of the conditions of the lease by the well-to-do New Englander stipulates that a competent staff of white servants should be engaged for his sojourn at the stately home. This servant question presents practically insurmountable difficulties, and one of the daughters of the family conceives the mad-cap idea that she, her sister, and their two brothers shall act as the domestic staff for the wealthy Yankee. Olivia Dangerfield, who is the ring-leader of the merry scheme, adopts the cognomen of Jane Ellen, and elects to preside over the destinies of the kitchen. Her sister, Elizabeth, is appointed housemaid. Her elder brother, Paul, is the butler, and Charley, the youngest of the group, is appointed to the position of bootboy. When Burton Crane arrives from the North, accompanied by Mrs. Faulkner, her daughter and Crane’s attorney, Tucker, they find the staff of servants to possess so many methods of behavior out of the ordinary that amusing complications begin immediately. Olivia’s charm and beauty impress Crane above everything else, and the merry story continues through a maze of delightful incidents until the real identity of the heroine is finally disclosed, but not until Crane has professed his love for his charming cook, and the play ends with the brightest prospects of happiness for these two young people.

It is a most ingenious and entertaining comedy and can be appreciated only when heard and seen.

The following is the cast:

Olivia Dangerfield.....	Blanche Longbons
Elizabeth Dangerfield.....	Ruth Stirrett
Mrs. Faulkner.....	Lucille McPherson
Cora Faulkner.....	Frances Rose
Amanda, Olivia’s Black Mammy.....	Irene Trent
Burton Crane.....	Lew Wilkinson
Thomas Lefferts.....	Harold Murphy
Solon Tucker.....	Clarence Marlow
Paul Dangerfield.....	Raymond Quinlan
Charley Dangerfield	Claude Walker

This play proved to be very successful because of the willingness of the students and the co-operation of their leader, Miss Mary Rose Adams.

BETOHI

COMMERCIAL CLUB



Top row (left to right)—Marguerite Belmont, Doris Wiggins, Claude Walker, James Nally, Lloyd Jones, Ralph Shively, Harold Adams, Cyril Shively, Edna Shepherd, Ethel Hadden.

Second row—Florence Leuschke, Mary Tabaka, Loretta Gallivan, Martha Davies, Lucille McPherson, Beulah Fay, Mr. Maxwell (instructor), Mamie Wall, Ruth Seitz, Thelma Senteney, Ruth Stoerger, Florence Dunn, Ralph Sheppard.

Bottom row—Lola Swick, Ruby Brandenburg, Elizabeth Dobson, Gertrude Clark, Phyllis Tabaka, Marguerite Dunn, Lillie Conlin, Aimee Brandenburg, Irene Trent, Blanche Longbons, Guynell Creel, Helen Fisher, Dorothy Noe, Ella Jones.

BETOHI



JOHN KIRKLAND
Janitor

A most friendly character to all those who have attended B. T. H. S.
An efficient employee of the school board.

We all feel that John and B. T. H. S. belong together for we are quite sure that the latter should be "lost" without him and we hope that John feels the same about B. T. H. S.

The Staff expresses its appreciation of the fine work that John is doing and in so doing feels that it is the mouth piece of the student body.



CLASS CALENDAR

September

- 8—Junior class meeting. Meeting of reporters.
- 9—Sophomore and Senior class meeting.
- 10—Seniors planned weiner roast for Thursday evening.
- 11—Freshman and Junior class meeting. No orchestra. New music ordered.
- 18—Senior class meeting, decided on weiner roast Monday evening at McPherson's grove. Each one is invited to bring a guest.
- 13—Freshman class meeting. Seniors have a good evening for weiner roast and everyone having a good time.
- 16—No orchestra. Music hasn't arrived. Freshmen had a weiner roast and some of them were initiated. Juniors also had a weiner roast and most of them went to the skating rink afterwards. Seniors chose their class rings.
- 17—Sophomore class meeting. No harmony or orchestra.
- 18—Had a pep meeting, also talks by Mr. Sollars, Mr. McClellan and Mr. Harrison. Going to play Newman. Junior class meeting.
- 19—Irene Trent, Blanche Longbons and Mr. Maxwell went to Chicago to enter the National and Illinois High School typewriting contest.
- 22—Blanche Longbons won fifth place in the contest. Newman won 6 to 0.
- 23—Meeting of the basketball girls. Orchestra practice.
- 24—Received a report from the Art Craft Guild book. Girls' Athletic Association was organized. Junior-Senior basketball practice.
- 25—Mr. Harrison announced that school would start at 8:30 the following day so everyone could attend the game at Atwood.
- 26—School started at 8:30. Short pep meeting, yells being led by Ralph Sheppard.
- 29—We won the Atwood game. Score 6 to 3. New maps have come for the history class. Mr. McClellan, Mr. Harrison and Mr. Sollars attended the High School Athletic Association meeting at Champaign.
- 30—Freshman-Sophomore basketball practice. Commercial Club elects officers and organizes Commercial newspaper.

October

- 4—Farmer City vs. Bement.
- 10—No school; teachers' meeting.
- 11—Arthur vs. Bement.
- 13—We won the game Saturday. Score 20 to 0. Meeting of Athletic Board of Control. Pictures were taken this afternoon and Literary Society organized. Report cards were given out.
- 14—Meeting of Girls' Athletic Association.
- 15—Commercial Booster on sale. Rates, per single copy 5c, per year 30c.
- 16—School started at 8:30. Had a pep meeting. Won the game, 20 to 6. Mr. Linquist took some pictures for the annual.
- 19—Mr. McClellan gave a short talk for the benefit of the Freshmen on the subject, "It Doesn't Pay to Advertise." Meeting of Girls' Athletic Association.

BETOHI

- 20—Meeting of Latin classes in Miss Roberts' room, 4:00 p. m.
- 21—Howard Hill has returned from California and entered school.
- 24—Bement was defeated in the Sullivan game. Senior Class entertained the Juniors at a Hallowe'en party.
- 30—Junior and Senior party was a success.
- 31—Play Mahomet at Mahomet this afternoon. Literary program postponed until next Thursday.

November

- 3—Mahomet won the game. Nate and Selby were hurt, but soon recovered. Freshman-Sophomore basketball practice.
- 4—Delphian committee meeting. Orchestra has begun to practice for the operetta.
- 5—Girls' Glee Club met. Brown had his knee hurt.
- 6—First literary program. Play Atwood tomorrow. Pep meeting tonight at 7:00 in the gym.
- 7—Bement played Lovington. All those who care to go are dismissed.
- 10—Meeting of the Girls' Glee Club at 12:45. Basketball game at 7:00—Freshmen vs. Seniors, Sophomores vs. Juniors.
- 11—Seniors vs. Sophomores, Juniors vs. Freshmen.
- 12—Meeting of the Latin decorating committee, 12:45. Booster on sale tomorrow. The trophy case is completed.
- 13—Literary program this afternoon, shortened periods. School starts at 8:30 tomorrow.
- 14—Pep meeting.
- 17—Freshman-Sophomore basketball practice. School starts at 8:30 tomorrow so everyone can go to the Monticello-Tuscola game.
- 18—School was dismissed at 2:00.
- 19—Basketball practice this evening after school. Girls' Glee Club practice. Meeting of Latin Club.
- 23—Report cards were given out. Sophomore and Senior basketball practice. Latin Club has a party this evening.
- 26—No school the rest of the week.

December

- 1—Rev. Clark gave a short talk on photographing the moon.
- 2—Latin Club meeting at 12:45. Football banquet at 6:30.
- 4—First basketball game—Bement-Cerro Gordo; 17-9 in favor of Bement.
- 11—The operetta, "Love Pirates of Hawaii", given in the High School auditorium tonight.
- 12—Bement played Tuscola and lost.
- 23—The High School met in the gymnasium for a Christmas candle light program; then we were dismissed for the holidays.

BETOHI

January

- 5—Juniors celebrate return to school with a bob sled party.
- 9—Bement met Clinton on home floor.
- 13—The team played Atwood and met defeat.
- 27—A new cataloging library has been purchased for the High School and is situated where the rest room used to be.
Dr. J. W. Van Kirk gave an interesting talk on "World Peace and the Coming Generation as the Future Peace-Makers of the World."

February

- 5—Mr. Maxwell has received the shorthand and typing loving cups from the engravers, and they will be placed in the trophy case next week.
- 7—Miss Bancroft attended the meeting of the Home Economics teachers at Millikin University.
- 9—Mr. Duncan of the W. C. Starr Motor Co. of Decatur gave an interesting lecture on "The Willys-Knight Motor" before the students of the General Science, Chemistry, and Physics classes.
- 16—The Senior English class elected a staff for the newspaper, "The Senior Observer," which is to give the class practice in journalism.
- 17—Philomathean Literary Society gives a program, 2:30.
- 19—Commercial Booster on sale.
- 25—The basketball team started on a two days' trip. They play at Pana Wednesday evening and at Nokomis Thursday.

March

- 2—Report cards were given out. Coach Sollars is taking eight men to the tournament in Decatur.
- 3—Junior Class meeting.
- 5—Tournament defeated by Atwood. Freshman Class meeting.
- 10—Boys' Glee Club in place of orchestra.
- 13—The Seniors had a kid party tonight.
- 16—Senior Observer on sale. Senior Class meeting.
- 17—Freshman Class meeting.
- 18—Commercial Booster on sale. Sophomore Class meeting.
- 20—Junior Class meeting. Freshman Class party in the south assembly.
- 27—Sophomores have a kid party in the south assembly.

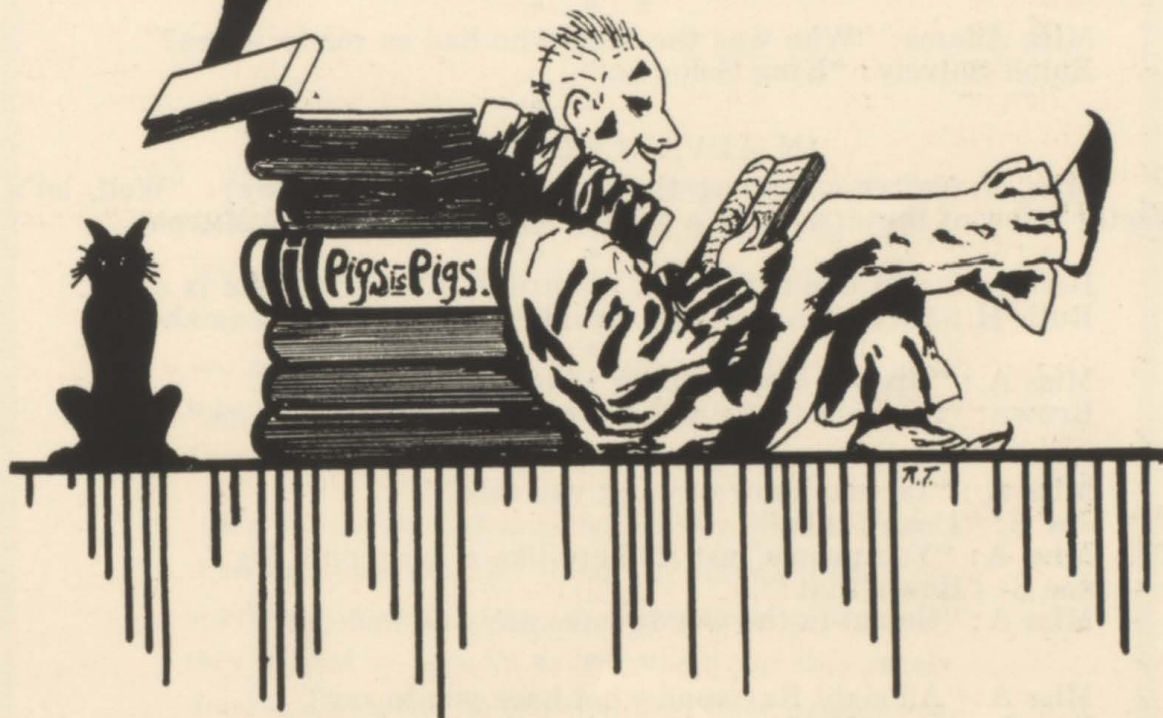
April

- 3—Senior Class Play.

May

- 6—Junior-Senior Banquet.

JOKES.





HIGH SCHOOL JOKES

IN COMMERCIAL ARITHMETIC

Miss N.: "Denny, you may work the next problem on the board."

Robert B.: "Denny" !!!!!!!!!!!!!?????????

Miss N.: "Well, Arthur, then."

Robert B.: "No; not Arthur—Archie"!!

* * *

CHEMISTRY

Mr. K.: "Homer, what is chemistry."

Homer: "Wee—l—l——!" etc.

Mr. K.: "The Old Oaken Bucket."

* * *

Mr. K.: "How long does it take the spark to get to the powder?"

Bright Student: "All at once."

* * *

Miss Adams: "Who was the king who had so many wives?"

Ralph Shively: "King Solomon."

* * *

IN ADVANCED ALGEBRA

Miss N. (after assigning the lesson for the next day): "Well, let's factor a few of these (without a pause) let's factor, Harold Murphy."

* * *

Bernice S.: "I don't like that picture of Katherine, she is sober."

Ruth H.: "Why? She isn't drunk in the other one, is she?"

* * *

Miss A.: "Brown, stop rubbing your feet on the floor."

Brown: "I smashed a fly and I'm trying to scrape him up."

* * *

Miss A.: "Do you know or can't you talk?"

Joe S.: "I can't talk."

Miss A.: "You people just sit here like a lump on a log."

Joe S.: "How's that?"

Miss A.: "Go out in the woods some day and find out."

* * *

Miss A.: "All right Raymond what have you to say?"

Ray Sanders: "Nothing—I was just shooing the flies."

* * *

Miss Adams: "For tomorrow read all about Shakespeare."

Lloyd: "Gee, all of that? I'd just as soon read the rest of the book."

* * *

Miss A.: "What's the matter Lloyd?"

Lloyd: "Nothing."

Miss A.: "Well get that grin off your face then."

Lloyd: "Can't. That was always there."

* * *

Miss A.: "You people act as if I assigned the whole book."

Willie: "No, just the first half of it."

* * *

1st Girl: "Can you keep a secret?"

2nd Girl: "I'll tell the world—"

NOTICE

PATRONIZE OUR ADVERTISERS:

THEY DESERVE YOUR PATRONAGE

Seldom do merchants and business men respond to advertising as have our Bement and a few out-of-town citizens. We urge that you read what they have to say; remember which ones have advertised with us; remember also that the intrinsic value of annual advertising is not great and that most of our advertisers have given us their ads to help out the school.

We thank our advertisers, but we promise more than this—we promise them our trade. Please cooperate with us in giving the advertisers your trade; they helped us, now let us help them, for they surely deserve all we can do for what they have done for us.

PATRONIZE OUR ADVERTISERS:

THEY DESERVE YOUR PATRONAGE

BETOHI

GYM CLASS PLACARD

"Talk Dancing"—"Romantic Movement" by A. C. N.

* * *

Ruth Taylor is going to college where she expects to get a G. M. degree. She says it means, "GET A MAN."

* * *

Mr. Mc: "James what do you expect to be when you get through school?"

James Nally: "An old man."

* * *

HONEST CONFESSIONS ARE GOOD FOR THE SOUL

Mr. H.: "Denny, what is a spendthrift?"

Denny: "A person who spends his money for tobacco and drinks."

Mr. H.: "Are you a spendthrift, Denny?"

Denny: "Well—Y-e-s."

* * *

(Our wholesome breakfast food): "Cyril." (cereal.)

* * *

Miss Adams: "I'm not supposed to teach manners here, but I guess I'll have to."

R. Shively: "Go ahead, guess it wouldn't hurt me—any."

* * *

ENGLISH THREE

Robert Body: (Coming late to class one morning.)

Miss Adams: "Why are you late, Robert?"

Robert B.: "My father is awfully sick."

Miss A.: "Good heavens! !—is he dangerous?"

Robert B.: "No, he is too weak to be dangerous."

* * *

QUOTATION BY GREEN FRESHMAN

"Archibold", "The Passing Show."

* * *

NATE'S PROPHECY

A pretty girl is nice to have,
And she is nice to view,
But it matters not how sweet she is
If she's not sweet on you.
Dog-gone Good Stuff.

* * *

GEOMETRY

Miss N.: "Arthur, don't you study your geometry every nite?"

Arthur B.: "Well—it all depends on what night it is."

* * *

Mary T.: "Have you Bronte, by Jane Eyre?"

Librarian: "No, but we have 'Jane Eyre' by Bronte."

BETOHI

WILLIAM GUSHARD COMPANY

Organization

THE SPECTACLE of progress portrays the triumph of organization. However great the need, however zealous the desire, however fine the ideal; there can be no continuance of growth without sound organization. Organization enables this store to serve great numbers of people daily; it enables us to seek new sources of supply, and to buy in cost-reducing quantities; it enables us to seek less expensive ways of conducting our business, thereby making lower prices possible; and it enables us to provide many free services for our customers and their families.

And—very important in this age of speed—organization enables us to bring our merchandize to your notice, in the form of advertising, so that you may know what we have for you without ever leaving your home.

C. F. Trisch

C. F. TRISCH, *President.*

DECATUR'S GREATEST STORE

BETOHI

Harold had a little car, it was full of gasoline
He dropped a match into the top
And hasn't since benzine.

* * *

Miss A.: "What makes you think Chaucer dictated to a stenographer?"
Owen: "Just look at the spelling."

* * *

Mary had a little lamb,
Her father shot it dead.
And now it goes to school with her
Between two hunks of bread.

* * *

Mr. H.: "How often is the census taken Dorothy?"
D. N.: "Every ten years."
Mr. H.: "What kind of years?"
D. N. (gazing out the window): "Oh, every leap year."

* * *

SUCH EXTRAVAGANCE

Buying an all day sucker at four o'clock in the afternoon.

* * *

ONE OF MR. K'S FAVORITE JOKES

"The 'Big 4' going south from Bement is a try weekly train."
"Why—how's that?"
"Well, you go down one week and try to get back the next."

* * *

ENG. III

(Miss A.: Thinking very hard.) "Give me a word some one."
Miss A.: "Don't you know what I am after?"
Class: "No, we just imagine."



Mallory Hats
for Young Men

Florsheim Shoes
in Snappy Styles

HART-SCHAFFNER & MARX CLOTHES

CLOTHES THAT GIVE SATISFACTION

Kingley Shirts & Wilson Bros.

FURNISHINGS

Bower & Muthersbough

"The Home of Good Clothes"

Bement, Ill.

Crawfordsville, Ind.

CONLIN & MALKUS

Dealers in

LIVE STOCK, FRESH MEAT AND FISH

PHONE 90

BEMENT, ILL.

Tiffin Motor Co.



Authorized Dealers

Bement, Illinois

INSURANCE

of all kinds

FIRE, LIFE, AUTOMOBILE
None but the best companies
represented. Losses adjusted
promptly. If you want your in-
surance properly written, get a
policy from one of my strong
companies.

DANIEL HALL
Bement, Illinois

BETOHI

STUDYING KING JAMES WORK BY SHAKESPEARE

Teacher: "Don't forget King James."

Class: "Well—there's three parts of King James."

* * *

Hello, "Old Top," new car?

No; old car, new top.

* * *

Lines of Seniors all remind us
We should make our lives sublime
And by asking foolish questions
Take up recitation time.

* * *

"What foreign languages are you taking?"

"Shorthand."

* * *

Just when we are about to make both ends meet, some one comes
along and moves the ends—!!

* * *

"My beauty doctor told me never to use soap on my face."

"That's obvious."

* * *

"What is Vaseline?"

"Vaseline is petroleum that has gone to college."

* * *

"Who is your favorite author?"

"My father."

"What did he write?"

"Checks."

* * *

Him: "Did you hear about the baby chickens raising feathers on
the installment plan?"

Her: "Why no, how's that?"

Him: "A little down today and more down every week."

BETOHI

Phone 62

After 12 P. M. Phone 98

HILL BROTHERS GARAGE

Bement, Illinois

The garage equipped for any demand. When you are broke, we will mend you by welding. No spark! Our battery service is always at your service. If you art flat, there is always a new tire waiting for you. If you are "dead," "Old Jeff," the tow truck, is always ready to pull you in. If you want to doll up, see our accessory department. If you are tired, come to our rest room.

Dealers in Maxwell and Chrysler

Ten Smart Styles for Women
and Misses

\$6 Pr.

Queen Quality
STRAPS AND TIES

PATENTS, SATINS KIDS,
CALFSKINS AND MANY
POPULAR TWO-TONES

H. S. Gebhart Co.

Get Your
SEASON
TICKETS
EARLY

FOOTBALL

Season Tickets, \$2.50

BASKETBALL

Season Tickets, \$2.50

On Sale Early September

BETOHI

Don't run your legs off after a girl, you may need them to kick yourself.

* * *

We believe that water on the brain in a brain storm makes wavy hair. Maybe Johnny Glynn knows.

* * *

Mandy: "Kiss me honey, I'se starvin."

Rastus: "I knew it, you done bit a hunk out of my cheek the last time."

* * *

Mr. H.: "Who displayed the most interest in government affairs in the reign of Augustus."

Claude W.: "The King's Supporters."

* * *

GOING TO ATWOOD

Driver: "There's a bridge up here some place isn't there?"

Nervous occupant of car: "Yes, but you have to get close to it before you can hit it."

* * *

ENGLISH III

Miss A.: "Harold are you chewing gum?"

H. A.: "—— ——— how did you know?"

Miss A.: "—— I smelled it —— ——."

Class: Ha! Ha! Ha! Ha!

* * *

MOTHER GOOSE REVIVED

With graceful feet a maiden sweet
Was tripping the light fantastic,
Then suddenly tore for the dressing room door,
You never can trust elastic.

Bement Electric
Light & Power
Company

Phone 238 Bement, Ill.

**BEMENT GRAIN
Company**

Grain, Coal and Feed
Franklin County Coal

W. B. Flemming, Mgr.

J. F. SPRAGUE

GRAIN COAL FEED
SEED SALT
RIVERTON
COAL

Corn Meal and Graham Flour

The
Bement Register

*PRINTERS
and
PUBLISHERS*

BEMENT, ILL.

LET US DO YOUR BAKING

Patato, Whole Wheat, Rye and Homemade Bread
Blue Bird and Harvest Bread

SPECIAL ORDERS A SPECIALTY

BEMENT, ILL.

PHONE 69

Dr. W. G. McPherson

Phone 43

Bement, Illinois

Dr. R. M. Finrock

Osteopathic Physician

General Practice

Phone 225

Bement, Ill.

BETOHI

"Let me have a September morn sandwich, waiter."

"What is that, sir?"

"Cold chicken without any dressing."

* * *

"Fadder, give me a dime to go and see the sea serpent."

"Vasteful poy! Here's a magnifying glass; go find a vorm."

* * *

"What's the difference between a Scotchman and a canoe?"

"A canoe tips."

* * *

PRETTY SMOOTH

A fellow from far Tipperary,

Had a face that was terribly hairy

One day on a bet,

He won a Gillette,

And now he's as slick as a fairy.

* * *

BRIGHT STUDENT

"Miss Adams: "Didn't Shakespeare write "Scotts," "Lady of the Lake?"

* * *

Mr. H.: "Is water a fodd, Joe?"

Joe C.: "No, I don't think so."

Mr. H.: "Why not?"

Joe C.: "Because you can't chew it."

* * *

After being tripped by a dog and then run over by a Ford a large woman was picking herself up when a man asked: "Did that dog hurt you?"

"No, but that tin can tied to his tail sure did.

* * *

SCHOOL DINING ROOM

Opal: "Do you serve in courses?"

Miss B.: "Yes."

Opal: "What do you serve first?"

Miss B.: "The first course."

* * *

Mother uses cold cream, father uses lather

My sweetie uses powder

At least that's what I gather.

BETOHI

LINN & SCRUGGS CO.

DECATUR'S QUALITY STORE

You Get More Value

Kaufman's have been famous for quality for a life-time. Fine fabric, right style, and perfect fit go with every suit purchased here.

Two Pants Suits, \$35 to \$60

High School Suits, \$25 to \$35

KAUFMANS

Inc.

Decatur, Illinois

Gift Shop
Edison Phonographs

Books
Kodaks

Haines & Essick Co.

Decatur, Ill.

4 SELLING FLOORS

Elevator Service

Sporting Goods
Toys and Games

Radio
School Books

W. E. MARTIN
Service Station

Tires, Tubes
and
Accessories

SINCLAIR OILS

Phone 312 Bement, Ill.

BETOHI

Forward: "Don't you think the violinist's obligato is beautiful?"

March: "I can't say yet, wait till she turns around."

* * *

Jim (picking up bowl): "Snooky would you have a nut?"

Snooky: "Oh, Jim, this is so sudden."

* * *

She wouldn't kiss him in the canoe so he paddled her back.

* * *

Do you know Poe's "Raven?"

"What's he mad about?"

* * *

"Are you a trained nurse?"

"Yes."

"Well, let's see some of your tricks."

* * *

"Why does George call his flivver "The Covered Wagon.""

"It's mortgaged."

PHYSIOLOGY

Mr. H.: "Now some of the parasites of the human body are hook worms and tape worms. Can anyone name another?"

Ward: "Wouldn't fish worms be included in that list?"

* * *

I love the taste of lipstick
The tea hound said to Grace,
She blushed, then hesitated
And passed him her vanity case.

* * *

Dumbells should sit up in the balcony so the jokes can't go over their head.

* * *

Mr. K.: "What else does sea water contain besides Na Cl (sodium Chloride.)"

W. Glynn: "Fish."

* * *

Kron: "What can you tell me about nitrates?"

Student: "Well-er they're a lot cheaper than day rates."

* * *

Snooky: "That final chemistry test I took was a tragedy."

Doris: "Wouldn't it be more appropriate to call it a comedy of errors, my dear?"

* * *

A man slipped on the ice and broke—a New Year's resolution.

H. P. MARTIN CO.

"The Store for Everybody"

Monticello, Illinois

F. J. MAILANDER

CLOTHIER

Monticello, Illinois

LEVIN DRY GOODS CO.

*The Palace Clothing House
and Variety Store*

John Levin, *Proprietor*

Monticello, Illinois

John L. Bloyd

Heating of All Kinds

Parlor Furnaces and
Cook Stoves

Phone 322

My Specialty is Illinois Watches

J. F. Hartsfield

JEWELER

West Side Square Phone 174

BETOHI

All animals have some form of communication. For instance, all that "deers" have to do to communicate is to look into each other's eyes.

* * *

Arthur Q.—We're going to have an exam in Sociology today.

Arthur B.—How do you know?

Arthur Q.—Mr. Harrison said we'd have one, rain or shine.

Arthur B.—Hurrah! It's snowing.

* * *

"Ever study a blotter?"

"No, foolish."

"Very absorbing thing."

* * *

"The difference between an elephant and a microbe," wrote another, "is that one carries a trunk, and the other carries the grip."

* * *

Owen—"How did you come out in that Chemistry exam?"

Joe S.—"Oh, I knocked it for a loop."

Owen—"Howzat? A hundred?"

Joe S.—"No, a zero."

* * *

"What are you doing up there, building a bird house?"

"No, foolish; I'm erecting a service station for flying-fish."

* * *

Patient—"Your bill reads: Fifty visits, \$300; medicine, \$40."

Doctor—"Exactly."

More Patient—"Well, I'll pay for the medicine and return the visits."

* * *

He—"How many shirts can you get out of a yard?"

She—"That all depends upon whose yard I get in."

* * *

"What's the charge, officer?"

"Fragrancy, sir; he's been drinking perfume."

* * *

"Guess my girl in school has changed her mind about basketball. She is evidently going in for something more useful."

"How so?"

"Now she writes that she has made the scrub team."

* * *

Miss Collett—"What was the greatest war song ever written?"

Claude—"Here comes the bride."

BETOHI

The Use Of
Symphony Lawn Stationery

DENOTES REFINEMENT

FOR SALE AT

DAVIS' DRUG STORE

ANDREW SWENSON
Bement, Ill.

THE HOME OF GOOD FURNITURE

Make your home more attractive and more liveable
by adding something new in the way of furnishings.

The latest in living room furniture—three piece
suites in mohair and velour—new and old creations
in chairs and rockers—dining room suites, breakfast
suites, bedroom suites, spinet desks, davenport, li-
brary and end tables, new rugs in Wiltons, Axmin-
sters and Brussels.

Always ready to make better homes possible at a
moderate cost.

ANDREW SWENSON
Bement, Ill.

BETOHI

Helen F.—“Why do you have a bridge on your fiddle?”

Guynell—“Oh, that’s to get my music across.”

* * *

“Auntie, will you please wash my face?”

“Why, Bobbie, I thought you could do that yourself.”

“Well, I can, but I’d have to get my hands wet and they don’t need it.”

* * *

Selby—“Don’t you think I’m light on my feet?”

Florence D.—“If you’re not careful you’ll light on your head.”

* * *

Soup should be seen, not heard.

* * *

Jim—“Have you seen any of the new \$5 gold pieces?”

Ralph Sheppard—“I haven’t seen any of the old ones.”

* * *

Irene—“My, but you’re fat!”

Lola—“I was built for comfort, not speed.”

* * *

“Woman is an improvement over man. That’s the reason the boys are looking for improvements.”

* * *

Donald R.—“Why do married men live longer than single men?”

Mr. Harrison—“They don’t. It just seems longer.”

* * *

“Please, ma’am,” said a hobo. “I’ve lost my leg.”

“Well, I ain’t got it,” snapped the woman, slamming the door.

* * *

If you are on a train and it’s behind time, throw tomatoes on the track and it will catch-up.

* * *

Everything was so still in the assembly fourth period you could hear a gum drop.

* * *

Oh! teachers, we pray that you will give heed
To our earnest appeal in the hour of need:
We promise to obey you with the meekness of lambs
If you’ll only go easy in the coming exams.

THRIFT OR WASTE

“COMMUNITY”
WEALTH

IS

“COMMUNITY”
HEALTH

—which?

In the interest of the entire community
you should save.

By accumulating your surplus funds you
eliminate waste.

You enrich yourself.

You enrich the community.

Join with us in the elimination of waste
—for community good.

FIRST NATIONAL BANK

BEMENT, ILLINOIS

McPHERSON HARDWARE COMPANY

HARDWARE, PLUMBING AND HEATING
PAINTS AND VARNISHES

BEMENT

ILLINOIS

HEADQUARTERS

for

All School Supplies

BODMAN'S

Drug Store

LYRIC

THEATRE

PHOTOPLAYS

of

QUALITY

Bement, Illinois

BETOHI

"Here's to love, the only fire against which there is no insurance."

* * *

"There is a man I have been laying for for two years," said the hen as the farmer passed.

* * *

If a girl had eyes like her father, would she be pop-eyed?

* * *

READ THIS TWICE

If these jokes are old and rotten,
And full of cobwebs and old cotton,
Don't get sore and blame the staff;
When you see a joke that makes you laugh,
And roar, shake and grin,
Just write it down and hand it in.

* * *

Homer M.—"I'd like to give him a piece of my mind."

Lloyd J.—"Hold on, Homer, you can't afford to give it away."

* * *

There's one good thing about flunking—you don't have to buy new books.

* * *

Where can a man buy a cap for his knee?
Or a key to the lock of his hair?
Can his eyes be called an academy
Because there are pupils there?
In the crown of his head what gems are found?
Who crosses the bridge of his nose?
Can he use when shingling the roof of his house
The nails on the end of his toes?
Can the crook of his elbow be sent to jail?
How does he sharpen his shoulder blades?
Can he sit in the shade of the palm of his hand?
Or beat on the drum of his ear?
Does the calf of his leg eat the corn on his toes?
If so, why not grow corn on the ear?

* * *

Said a baldheaded man to a waitress bold:
"See here, young woman, my cocoa's cold."
She scornfully answered: "I can't help that.
If the blamed thing's chilly, put on your hat."

BETOHI

Your Dream—
No matter how beautiful;
Your visions—
No matter how big,
All must have
A cash foundation

THIS BANK CAN BE A SUBSTANTIAL FACTOR IN HELPING YOU
MAKE YOUR DREAMS COME TRUE

State Bank of Bement

THE
WILKINSON COMPANY
for
LUMBER — BRICK — CEMENT
and
All Kinds of Building Material

Dr. J. G. Bauer

DENTIST

BEMENT, ILLINOIS

Office Phone 135, Res. Phone 58

W. A. HAMMOND

JEWELER and OPTICIAN

Bement, Illinois

 **BETOHI** 

Teacher—"A fool can ask more questions than a wise man can answer."

Freshie—"That's why we all flunked."

* * *

Claude (to photographer)—"Now, remember, I want a small picture."

Photographer—"Well, then, just close your mouth."

* * *

Twixt optimist and pessimist
The difference is droll;
The optimist sees the doughnut,
The pessimist sees the hole.

* * *

Miss Archibold—"I get some rare work from those freshmen."

Miss Roberts—"Rare?"

Miss Archibold—"Yes, not well done."

* * *

Mr. Kronsagen—"How could you make soft water hard?"

Burdell—"Freeze it."

* * *

Ward—"Was that your girl I saw you with last night, Spike?"

Spike—"Yeh, why?"

Ward—"She's no bigger than a piece of stick candy."

Spike—"Maybe not, but she's much sweeter."

* * *

Selby—"I dreamed that I died last night."

Robert—"What woke you up?"

Selby—"The heat."

Oyler's Cafe
for
MEALS
and
SHORT ORDERS
CIGARS, TOBACCOS,
ICE CREAM, SOFT DRINKS

K. B. HARLOW
DRY GOODS
and
MEN'S FURNISHING
GOODS
Bement, Illinois

BEMENT HIGH SCHOOL

OUR GREATEST

Community Builder

We also are Builders, ready to meet your every need.
We sell everything to build anything.

THE BEMENT LUMBER COMPANY

EMPERESS

Confectionery

Bement, Ill. Phone 170

Manufacturers of

CANDIES, ICE CREAM

and

FANCY ICES

High Grade Goods

OUR SPECIALTY

MONARCH

The only Nationally Advertised
Brand of Quality Food Products
sold only to the man who owns
and operates his own store.

For Sale by

N. O'Loughlin

Phone 7 Bement, Ill.

W. W. Body's Store

for

HAPPY HOUR CANNED

GOODS

CITY CLUB COFFEE

PYRAMID FLOUR



Let's Enjoy Your Struck

We wish to thank the
STUDENTS and FACULTY
for their courteous cooperation in the making of
PICTURES FOR THIS ANNUAL
LINDQUIST & MYRVOLD

Official Photographers for this Annual

319 N. Water St., Decatur, Ill.

PHONE MAIN 939

Home of
SINCERITY
2 Pants Suits

at

\$46
NEUSTADTS

Water Street at Prairie
DECATUR, ILL.

C. A. MORROW
ART SHOP

Eastman Kodaks,
Sporting Goods,
Picture Frames,
Stationery,
Pictures

Exclusive Gifts for all Occasions
112 E. Prairie St., Decatur, Ill.

Chas. H. Ball
Agent

The Travelers' Insurance
Company

LIFE, ACCIDENT, AUTOMO-
BILE AND LIABILITY
Phone 112 Bement, Ill.

Folrath & Folrath
211 North Water St. — "Shoes that Satisfy"

Dr. L. A. Pelton

Dentist

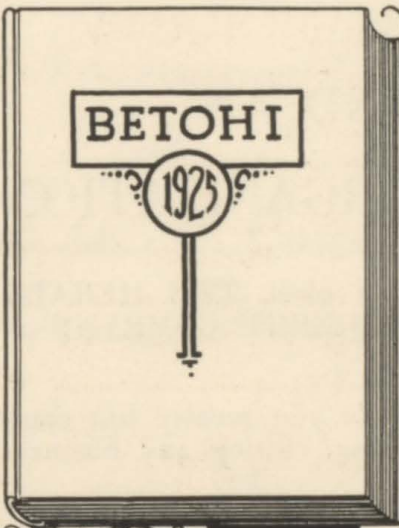
Bement, Illinois

Office Phone 206 Res. Phone 66

READ

The Commercial
Booster

Published Monthly by the
Bement High School
Com'l Club



It was our pleasure to
Engrave and help Plan

The Betohi

A number of years of intensive
study and practical application
to High School and College problems
have enabled us to grasp and
record the spirit of student days

The Capitol Engraving Company
Artistic Engravers
SPRINGFIELD, ILLINOIS

BETOHI



THIS MODERN BUILDING WILL HOUSE OUR PLANT AFTER AUGUST 1, 1925

A MODERN PLANT AND AN EFFICIENT, EXPERIENCED ORGANIZATION



Sign of
Printing Quality

serves you when you elect THE HERALD PRINTING & STATIONERY COMPANY as your annual printers.

Not merely printing do you receive but complete advisory, planning, editing and business management service.

You are always welcome to visit our plant and see the actual array of modern machinery necessary to produce such high grade work as this annual.

HERALD PRINTING & STATIONERY CO.

DECATUR

ILLINOIS

BETOHI

AUTOGRAPHS

- Harriet Kearney "I said"
 Duane Allen "The Goat"
 Martha Davies "Patty" "you may borrow my pen." "Good luck"
 Gertrude Clark "Why be so rough to the back seat?"
 Ward Alexander "Remember at Mahomet game"
 Jenny Ball "Me & the Back Seat."
 Glenn Fairbanks "Yea Hatty." "Some gal"
 Stanley Bodman "Is Hat and Joe under the robe"
 Howard Hill "One Saturday night."
 Vivian Reading "my Shamrock cousin"
 Raymond Sanders \$1.25 Mrs _____
 I da be real "was he ever without chewing gum?"
 Lillie E. Conlin "How do you like to ride in a car?"
 Grace Daugherty "Are you chewing gum for?"
 Melvin Rodgers "Billiard Table sports"
 Homer Daugherty "An other bench warmer"
 Florence C. Lodfelter "Got your English?" "Yes, do you want it?"
 Lemen Wiserock "where were you lost in?"
 Rose Loudenback. "I never chew gum."
 Miriam Harrell "How Joe, in a friend
 of yours; so please vote
 right. (Eng H)
 Ninety-three

BETOHI

AUTOGRAPHS

- Ruth Brennan "A. Pal Forever"
- Jeannette Piggott "Remember the waste basket"
- Helene O. Laughlin "Please don't hit me any more"
- Pauline Morgan "No-let-me-go"
- Bella Hill "Good Engl Student"
- Arthur Quinlan "Hells Curry"
- Everett Ernst "Got any refreshments?"
- Zsla Wempson "A June bug for a moth."
- Benlak Minor "Get to work."
- Joe Sloan "Hell's beat this crew."
- Louis Tabaka "W here's Hattie?"
- Margaret Tabaka "Hattie's a been woman"
- Carol Lopez "Jack Liner"
- Heleen Cole "Oh! Hattie."
- Louis Higgins "Quit Standing on the Corner"
- Larry Bower "But I like to have you tell me when you fellow comes unexpectedly." "Let's go to the dance."
- Troy Phillips "Our ability to skip school"
- Zona Becker "Remember 6th Period"

BETOHI

AUTOGRAPHS

What is your memory?

Edmund Leuschke "Snoopy" Hang around awhile.

Lois Fritoe "we could hear nothing but the Ingersol"

Ruby Sparks

"at the corner By Willow branch"

Bernice Hunt

"How's that?"

Helen Boone

"Don't tell so many lies"

Mary Sabaka

Joe our Irish boy.

Thelma Priestley

"Success as a Junior"

Phyllis C. Sabaka

We struggled through Biology together with many others

Rayne Jackson

Bement school pals

Elizabeth Adams

"we won't forget the 7th Period" will we not?

Emma Day

8th Grade '29

BETOHI

Now that we have succeeded in putting out an annual for the second time in eleven years, we sincerely hope that it has been duly appreciated by you. In the making up of this year's book, our work has been hard, our efforts sincere, but at last we have completed a book which we sincerely hope has brought back to you almost forgotten memories of the Bement Township High School.

*Drunk last night! Drunk the night before.
Going to get drunk tonight if I never get drunk no more.*

