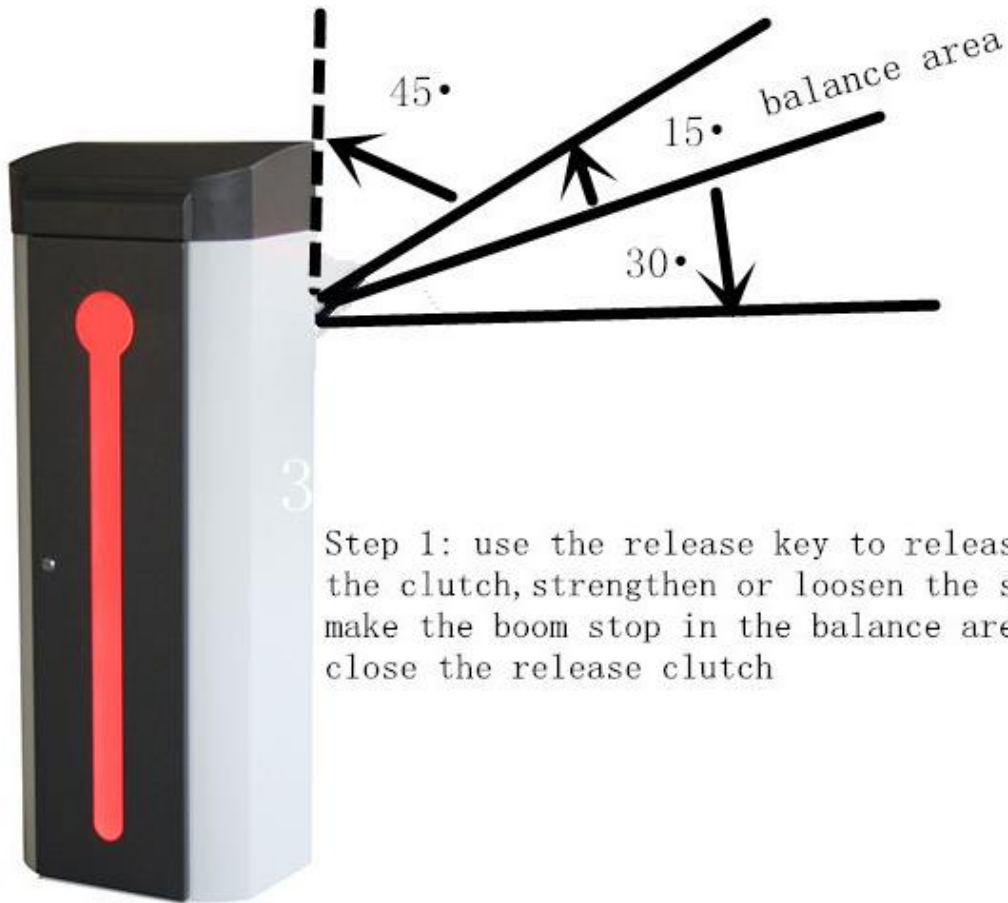
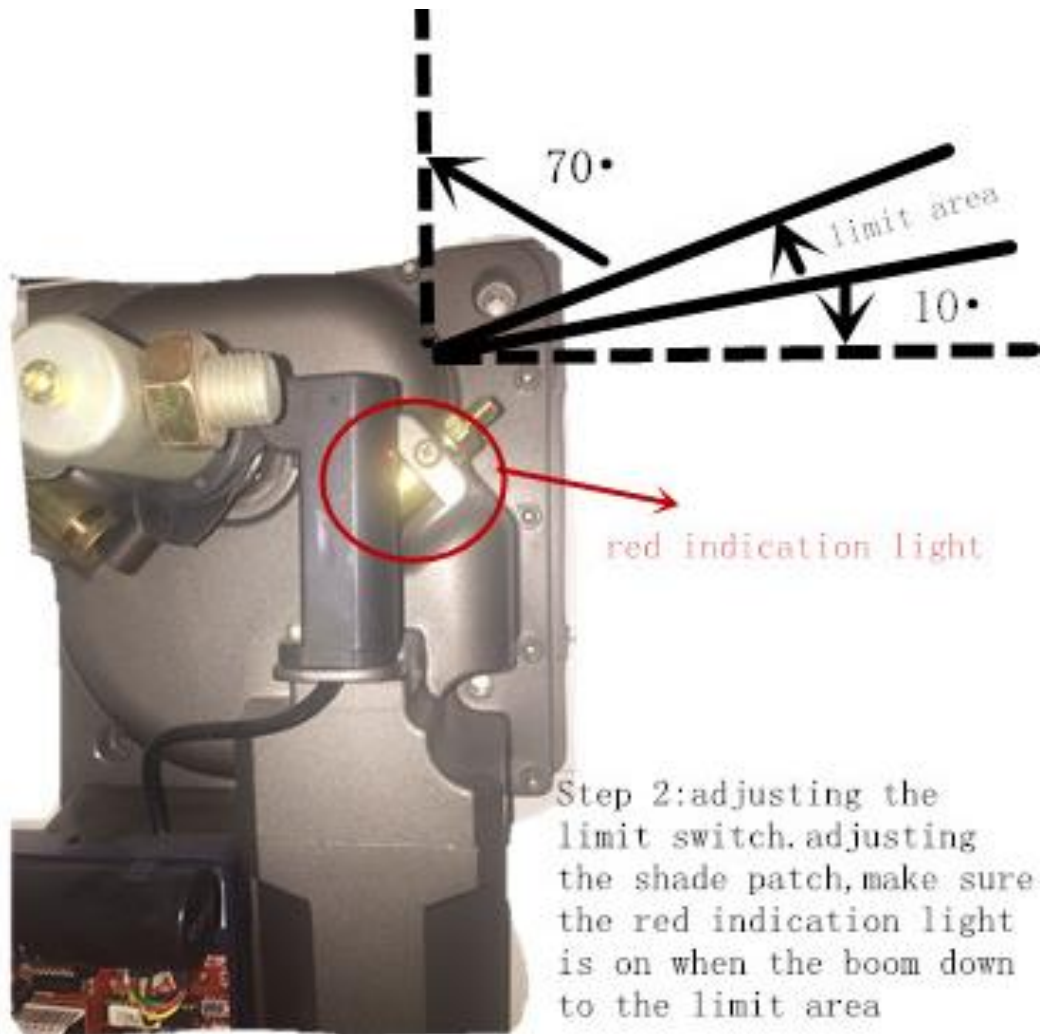


ADJUSTMENT FOR ALL THE 2B-QIBARLEDI3 BARRIER.

The attached picture is to make the adjustment for all the 2B-QIBARLEDI3 barrier.



Step 1: use the release key to release the clutch, strengthen or loosen the spring make the boom stop in the balance area, then close the release clutch



Currently for the 2B-QIBARLEDI3 barrier, if the boom is 4m, then need to change a bigger spring, the 7.0mm spring.

When is not posible to change we need to streng the spring to the MAX postion.

Make sure all your tehcnial person keep it in mind, the best way is every three months check the balance and adjust it. This mantain is very easy, I think 3min/pc the most.