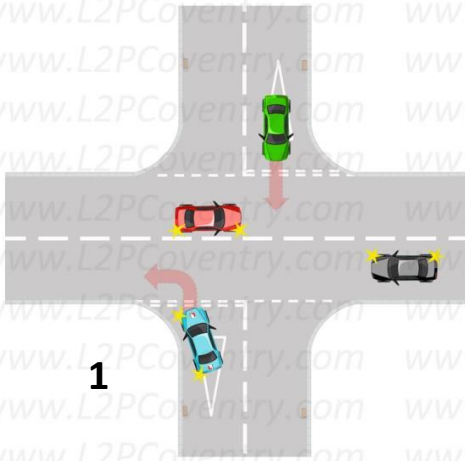
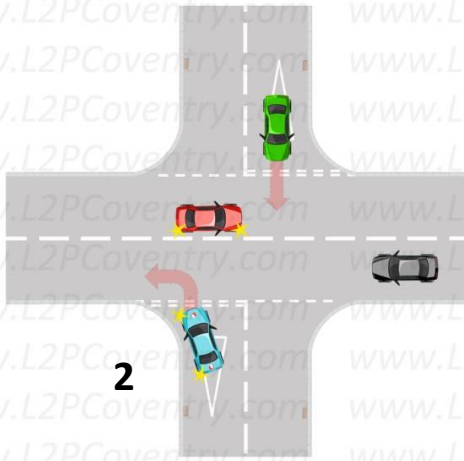


Cross roads (priorities)



1

1 - Is it safe for blue car to emerge left? Why?



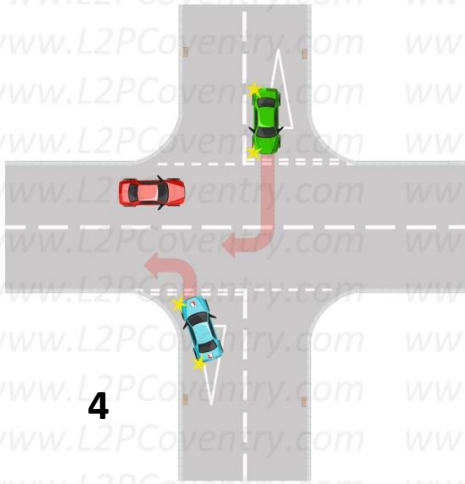
2

2 - Is it safe for blue car to emerge left? Why? Who has priority?



3

3 - Is it safe for blue car to emerge left? Who has priority? Why?



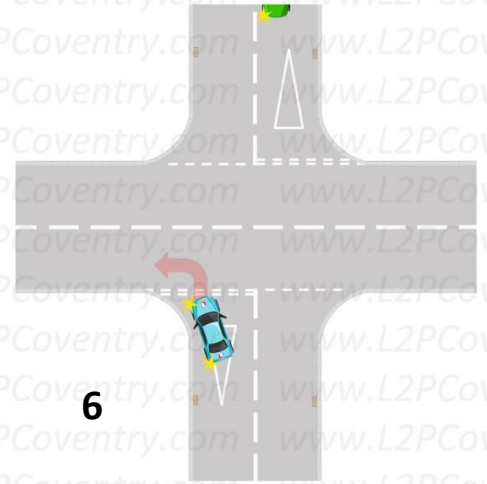
4

4 - Is it safe for blue car to emerge left? Why?



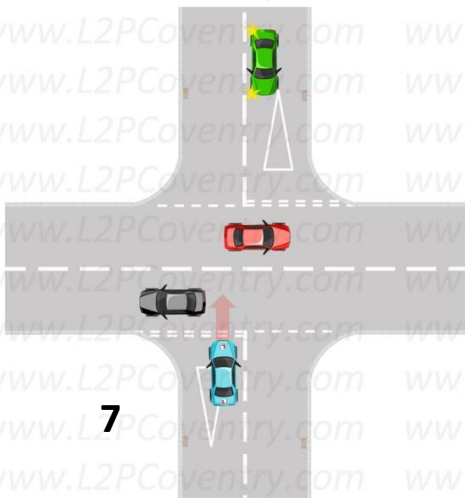
5

5 - Is it safe for blue car to emerge left? Why?



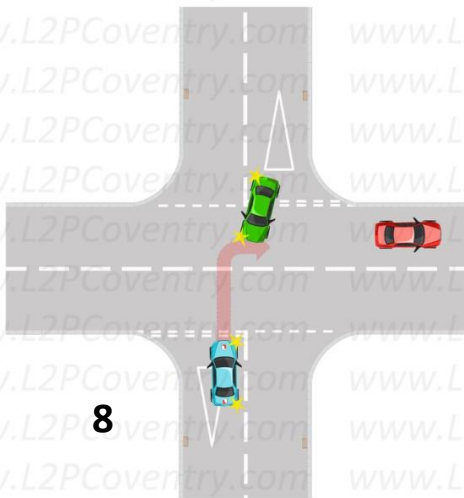
6

6 - Is it safe for blue car to emerge left? Why?



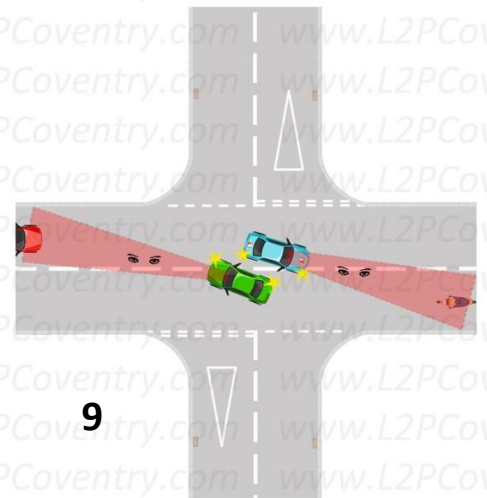
7

7 - Is it safe for blue car to emerge left? Why?



8

8 - Is it safe for blue car to emerge left? Why?



9

9 - Is this offside to offside or nearside to nearside turning?