

Emerging Left (Closed T junction) MSPSLADA



Look

LADA Look for parked cars, Pedestrians, motor bike and traffic on the road you are emerging to. Check the speed limit of new road.

Speed

Slow down and be ready to stop. Consider Slope of the road? Closed or Open junction? STOP or give way?

Position

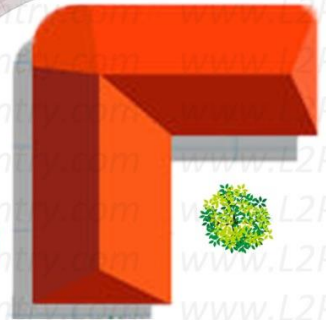
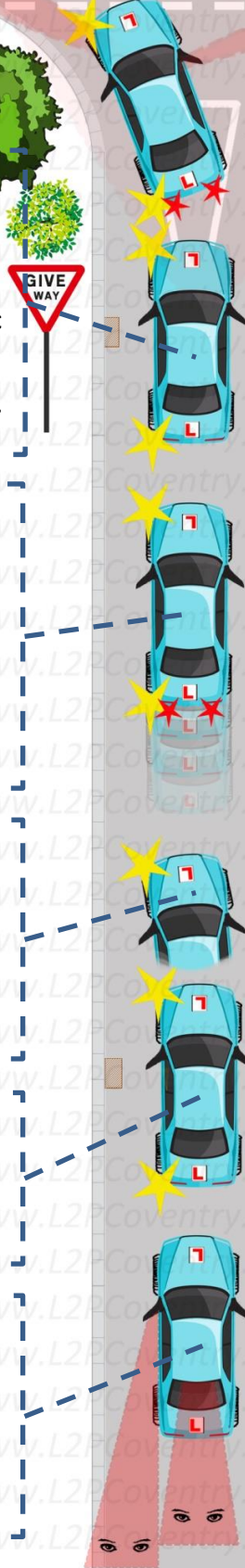
Stay half a meter (reasonable distance, depends on width of the road) away from kerb. WHY?

Signal

Indicate Left in a good time.

Mirrors

Check your centre and Left mirrors. WHY & WHEN?



Minimum observation (looks right, left and right again through side windows)

Look for pedestrians crossing the road?

Judge speed and distance of traffic on the main road to decide if it is safe to emerge?

If you can't see, DON'T GO!

Peep & creep if you need to?

Stop **before** Give way or Stop line at the end of the road if you need to.

Use your hand brake if you need to stop and go on the hill.

Never make traffic on the main road to Slow, Stop or swerve when you are emerging.

Peep & Creep

