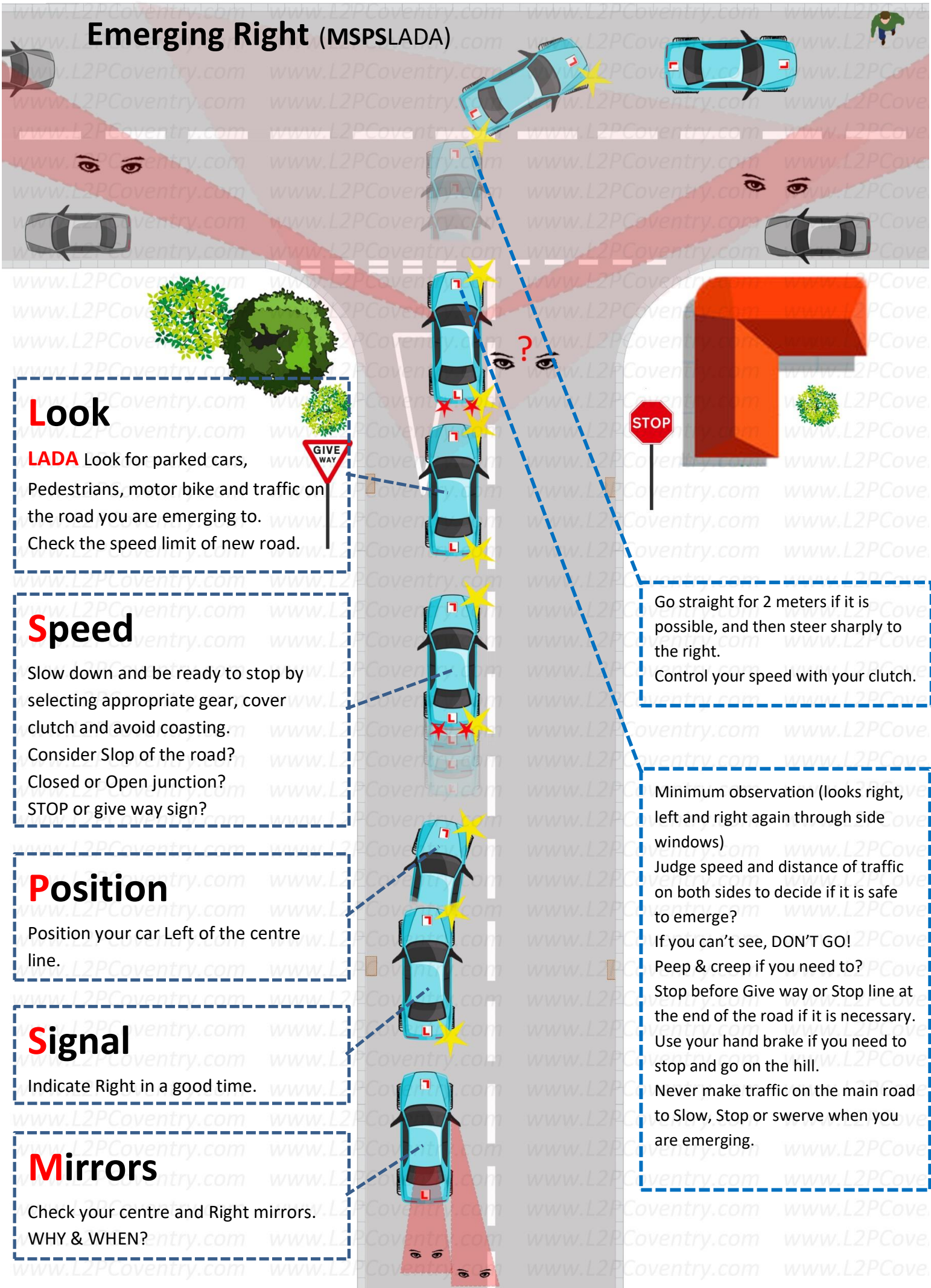


# Emerging Right (MPSLADA)



## Look

**LADA** Look for parked cars, Pedestrians, motor bike and traffic on the road you are emerging to. Check the speed limit of new road.

## Speed

Slow down and be ready to stop by selecting appropriate gear, cover clutch and avoid coasting. Consider Slope of the road? Closed or Open junction? STOP or give way sign?

## Position

Position your car Left of the centre line.

## Signal

Indicate Right in a good time.

## Mirrors

Check your centre and Right mirrors. WHY & WHEN?

Go straight for 2 meters if it is possible, and then steer sharply to the right. Control your speed with your clutch.

Minimum observation (looks right, left and right again through side windows)  
Judge speed and distance of traffic on both sides to decide if it is safe to emerge?  
If you can't see, DON'T GO!  
Peep & creep if you need to?  
Stop before Give way or Stop line at the end of the road if it is necessary.  
Use your hand brake if you need to stop and go on the hill.  
Never make traffic on the main road to Slow, Stop or swerve when you are emerging.