



**Progress Report Meeting
to the
Community Monitor Committee
January 17, 2005**

Outline

- Documents Reviewed
- Landfill Inspection 12/13/05
- Landfill Inspection 1/6/06
- Alternate Daily Cover
- Future Work

Documents Reviewed

- Annual Storm Water Discharge Report 2004-2005
- Monthly Tonnage Reports
- Bay Area Air Quality Management District Report
December 2004 through May 2005
- Waste Acceptance Limitations

Annual Report for Storm Water Discharge 2004-2005

- Samples were collected
- No non-storm water discharges
- Visual observations
- BMPs were evaluated



Combined Title V Semi-Annual and Partial 8-34 Annual Report December 1, 2004 through May 31, 2005

- Control devices were within heat and temperature limits
- Carbon emission rate within 15 lb per day limit
- ALRRF requesting a variance from 15 lb per day limit
- Target gas flowrate not achieved 180.2 hours (out of 240 allowed)
- ALRRF recalculated target gas flow rate pending BAAQMD approval

Waste Acceptance Limitations

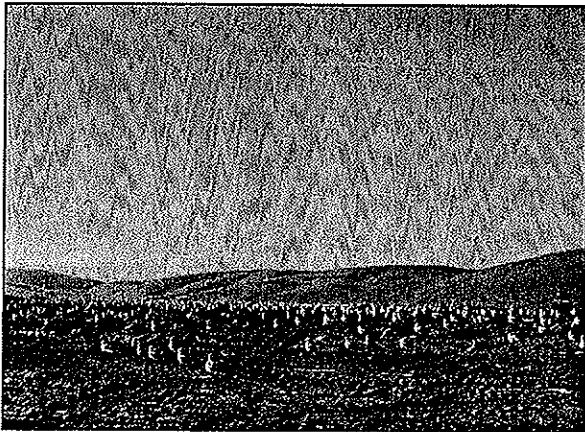
- Quantities within Settlement Agreement limits
- After expansion no sludges, inert waste or special waste from outside 9 Bay Area Counties
- After expansion banking no longer applies

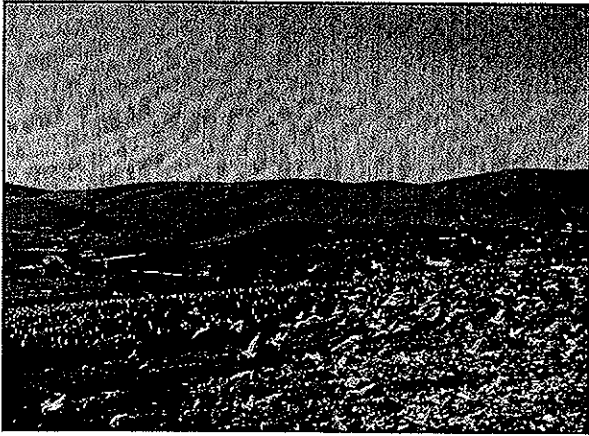
Landfill Inspection 12/13

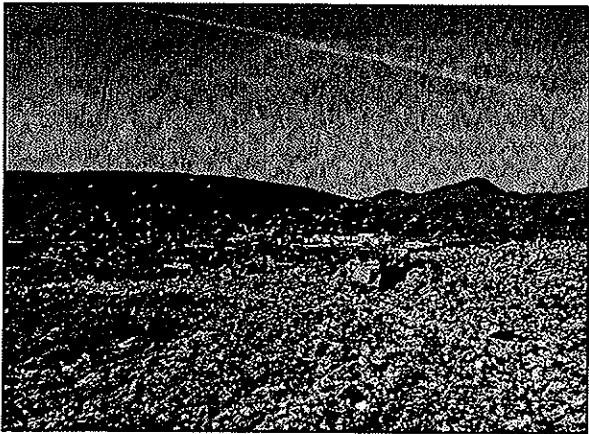
- Observed nighttime operations
- Preparations for winter rains
- No birds, no bird guns

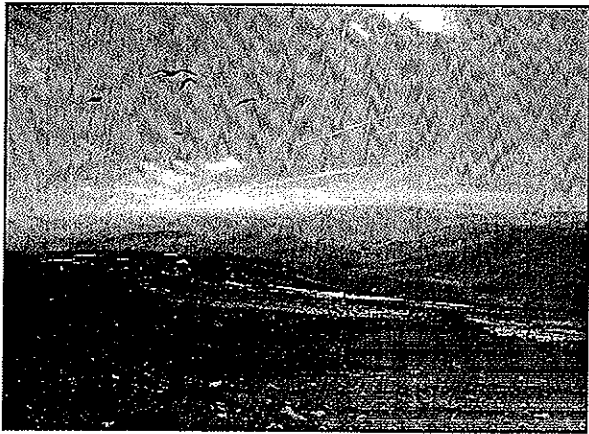
Landfill Inspection 1/6/06

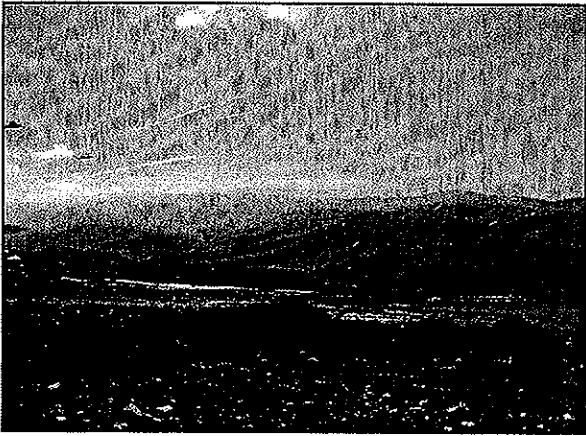
- Reviewed Documentation Maintained at Landfill
- Environmental Controls
- Truck Traffic
- Storm water controls
- Tour with Neil Wise and Teresa Dominick

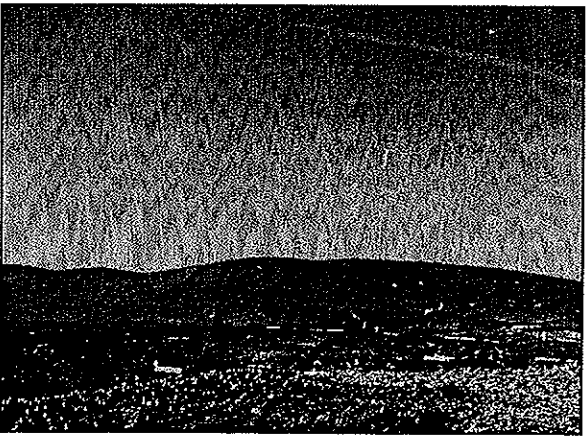


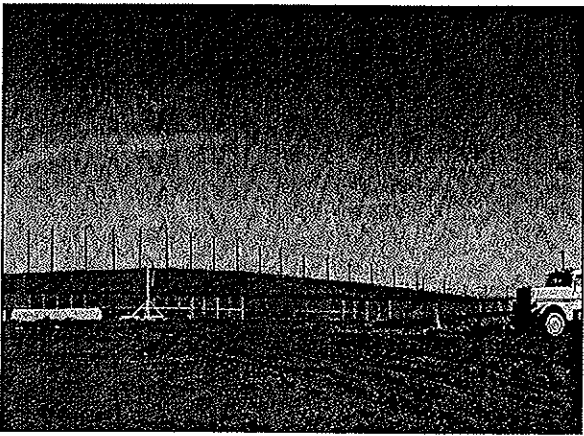












Alternate Daily Cover

- Telephone Conversation with Tom Padilla at stopwaste.org
- Green Waste

Future Work

- Conduct Landfill Inspections
- Review Documents
- Respond to CMC Requests
