



Progress Report
to the
Community Monitor Committee
March 21, 2006

Outline

- Documents Reviewed
- Landfill Inspection 2/23/06
- Landfill Inspection 3/14/06
- Reporting Leachate Seeps
- Well 20B
- What happens when there is a violation?

Documents Reviewed

- Monthly Tonnage Reports
- Storm Water Pollution Prevention Program
- Conditional Use Permit C-5512
- Waste Acceptance Limitations (Table)
- Combined Title V Semi Annual and Partial 8-34 Annual Report June through November, 2005
- Second Semi-Annual and Annual 2005 Groundwater Monitoring Report

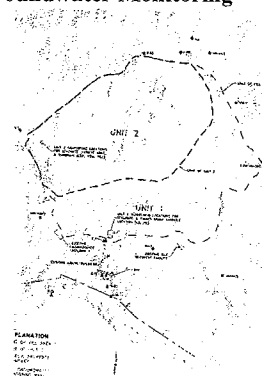
Sludges, Inert Waste and Special Waste Limits – Outside Nine Bay Area Counties						
Year	Tonnage Disposed	Agreement Tonnage Limitation	Banked Tonnage Carry-over unused/ (over limit)	Banked Y-O-Y Tonnage Running Total	Adjusted Tonnage Limitation	Tonnage variance Under limit/ (over limit)
1999	8,586.09	12,000	3,413.91	-	12,000	3,413.91
2000	2,263.28	12,000	9,736.72	3,413.91	12,000	9,736.72
2001	1,423.84	7,500	6,076.16	13,150.63	12,000	10,576.16
2002	1,685.17	7,500	5,814.83	19,226.79	12,000	10,314.83
2003	2,337.85	7,500	5,162.95	25,041.62	12,000	9,662.95
2004	1,919.81	7,500	5,580.19	30,204.57	12,000	10,080.19
2005	3,069.91	7,500	4,430.09	35,784.76	12,000	8,930.09

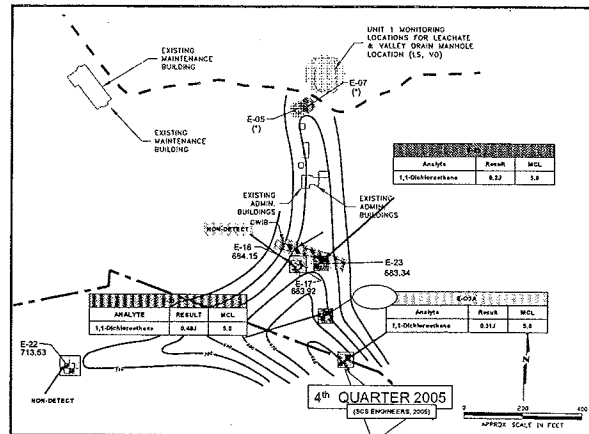
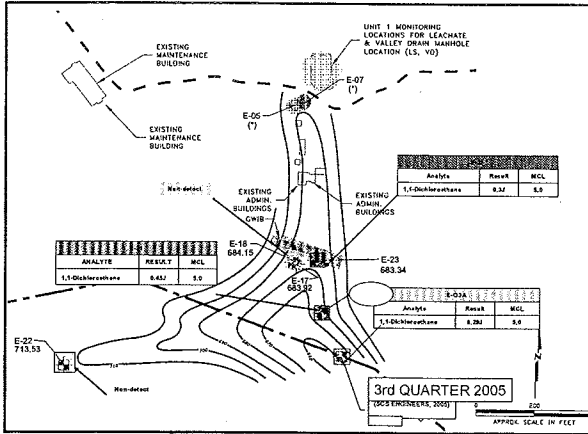
Combined Title V Semi-Annual and Partial 8-34 Annual Report June 1, 2005 through November 30, 2005

- Control devices were within heat and temperature limits
- Carbon emission rate within 15 lb per day limit
- Target gas flowrate not achieved 193.24 hours (out of 240 allowed)
- ALRRF recalculated target gas flow rate pending BAAQMD approval
- Cover integrity monitoring

Second Semiannual 2005 Groundwater Monitoring Report

- Groundwater Monitoring
- Third Quarter
- Fourth Quarter
- 5-Year COC Results
- Concerns

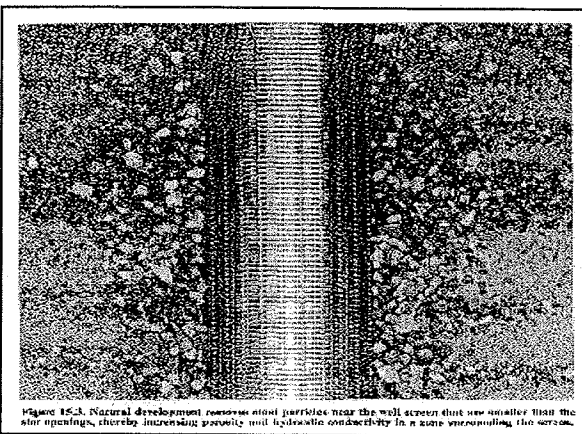
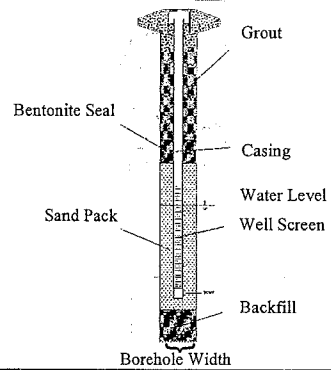




Concerns

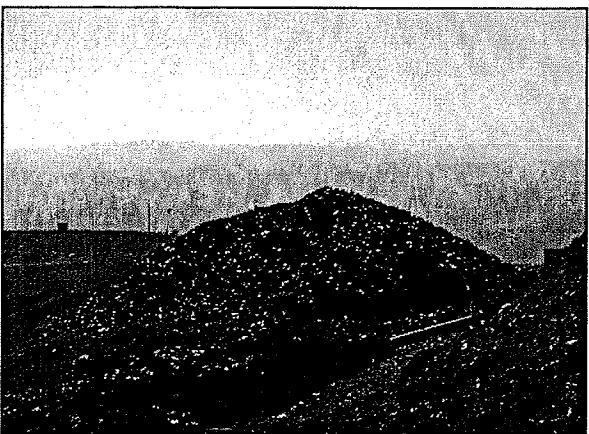
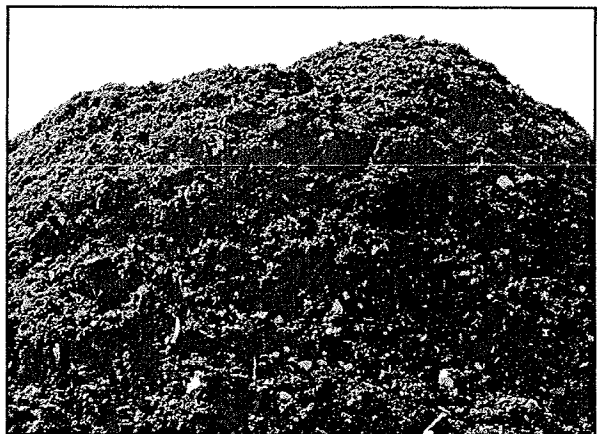
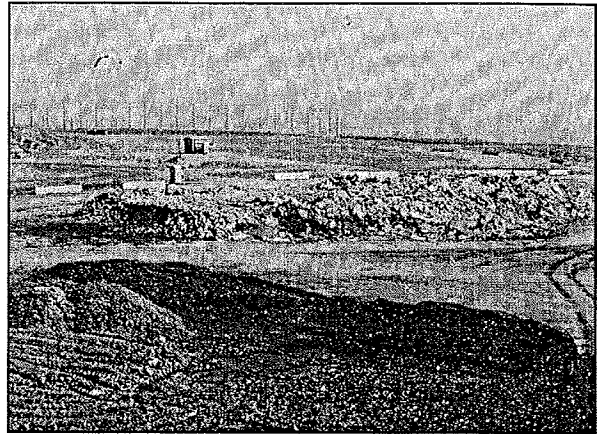
- Representativeness of groundwater samples
 - Parameter Stability
 - Purge Volume
- Stabilization parameters in leachate wells E-05 and E-07

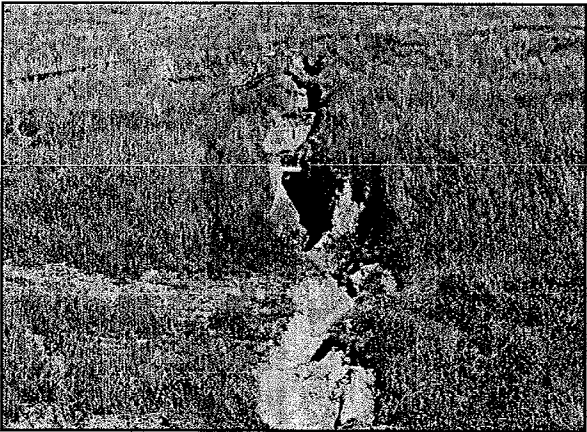
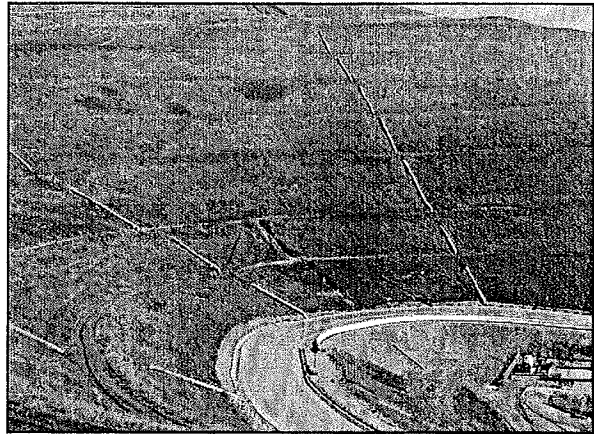
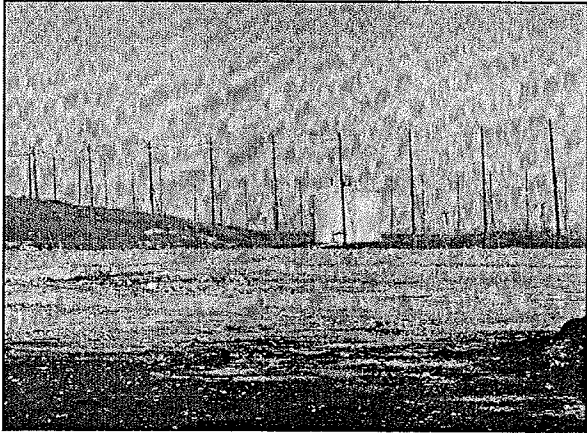
Monitor Well Diagram



Landfill Inspection 2/23/06

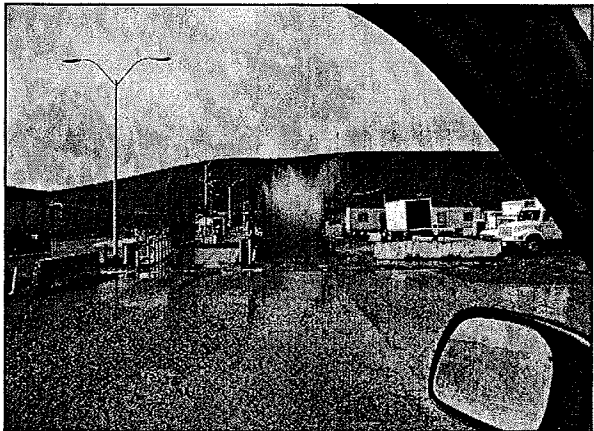
- Reviewed Documentation Maintained at Landfill
- Environmental Controls
- Tour with Teresa Dominique

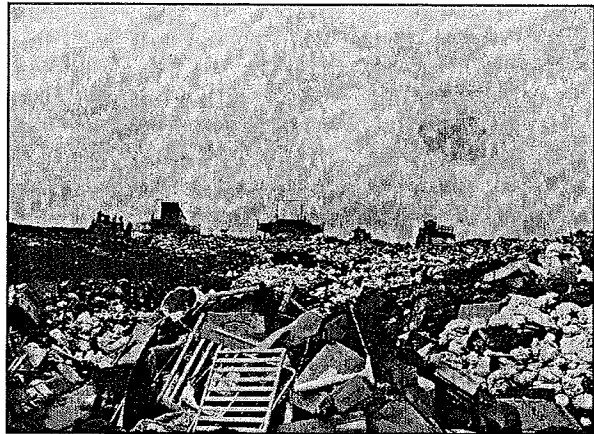
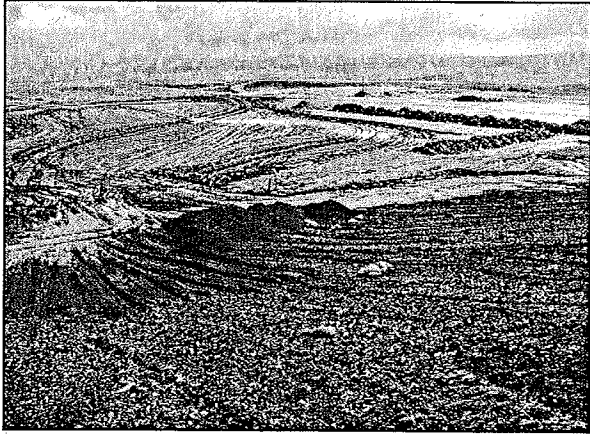


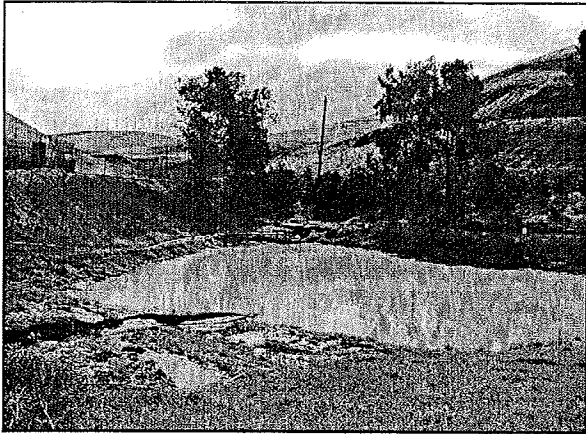


Landfill Inspection 3/14/06

- Reviewed Documentation Maintained at Landfill
- Environmental Controls
- Truck Traffic
- Tour with Teresa Dominique and Karen Moroz





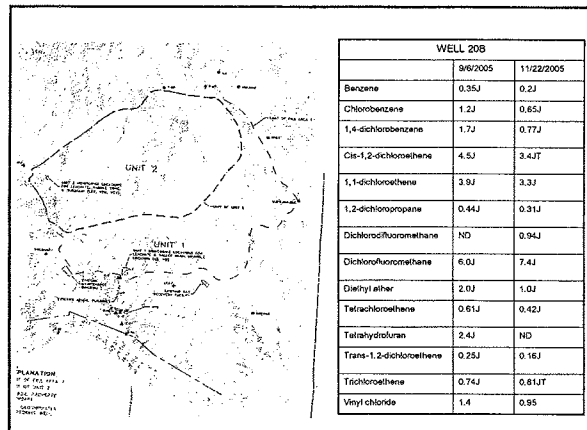


Reporting Leachate Seeps

- Requirements in WDR
- Report by Telephone to the Water Board
- Written report containing location, flowrate, nature of discharge and corrective measures

WELL 20B

- Vinyl Chloride Exceedance “Evidence of a Release”
- Report to Water Board
- Propose Evaluation Monitoring Program
- Submit Engineering Feasibility Study



What Happens When there is a Violation?

- LEA
- BAAQMD
- RWQCB
- NPDES

Future Work

- Conduct Landfill Inspections
- Review Documents
- Respond to CMC Requests