



22ND ANNUAL

# KIAMA

## April 6th & 7th 2024



Early Entry

### Lucky ANGLER DRAW

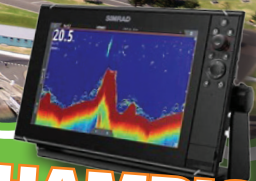
Shimano Stella 14000 Trophy Hunter 838 Stick Bait Rod

OCEAN STORM FISHING TACKLE

### Heaviest Marlin Capture over 140kg \$2,000 CASH



### CHAMPION BOAT T&R \$2000 KIAMA LEAGUES & SIMRAD NSS EVO SOUNDER



colin douch photography



### PROUDLY SPONSORED BY...

## SHIMANO

G&K CLARKE BRICKLAYING

## SIMRAD

SOUTH COAST SUZUKI MARINE

CIVIL | YATCON CIVIL PTY LTD

CITY COAST SERVICES

RESOURCESNSW



A PLUS PLASTICS P/L

PROSECT DRY HIRE

TROPHY HUNTER

EASTS BEACH BIG4 HOLIDAY PARK KIAMA

GATES HAULAGE

OCEAN STORM FISHING TACKLE



BLUEWATER GLAZING



COASTWIDE CIVIL

SUNSET MARINE SHELLHARBOUR



El Corazon Mexican Restaurant

FISHING STATION

Dowling Plumbing Services

## ■ VENUE

The Committee and members of the Kiama Game Fishing Club extend an invitation to all anglers who are financial members of a club affiliated with GFAA, NSWGFA or ANSA to participate in our Kiama Game Fishing Club Tournament to be held at Kiama on **Saturday 6th & Sunday 7th April 2024**. Non affiliated anglers who wish to compete must join Kiama Game Fishing Club. Kiama Game Fishing Club membership is available for \$75 senior and \$30.00 for junior membership. NOTE: ANSA members must fish on a NSW GFA registered boat.

## ■ TOURNAMENT COMMITTEE

The Executive Committee of the Kiama Game Fishing Club are the sole adjudicators of all aspects of the tournament and rules. Their decision shall be final.

President – Stuart Willick – Mobile 0411 502 569

Radio Operator – Gamefish Base – Bruce Mitchell – Mobile 0439 545 120

Moorings – Paul Wyer – Mobile 0428 273 555

Weigh Master – Nick Hodgkins – Mobile 0403 090 422

Secretary/Recorder – Deb Russell – Mobile 0428 949 113

Weigh Station Manager – Kaine Clarke – Mobile **0401 404 723**

## ■ ENTRIES

Entries are made by submitting a completed entry form together with details of insurance and appropriate fees as listed on the entry form to the Secretary, Kiama Game Fishing Club, PO Box 447, Kiama NSW 2533. **All entries prior to 3rd April 2024 will be included in Lucky Angler Prize (as advertised)**. No refunds will be made after this date. **Late entries will be accepted up to 7.00pm Friday 5th April 2024.**

## ■ INSURANCE

Each vessel is to have their own Third Party Liability Insurance and Boat Owner must provide details of Insurance covering third party property liability and third party personal liability insurance on the relevant section of the tournament entry form and must be signed verifying that the information supplied is correct.

## ■ LUCKY ANGLER DRAW

The Draw will be held at the Tournament Dinner on Saturday night. Angler must be present to collect unless still fighting a fish.

## ■ TEAMS

Boats up to 7 metres must have a minimum of two senior registered anglers and over 7 metres a minimum of three. Each team member will be given a number which is to be used for radio schedules.

## ■ REPLACEMENT OF BOATS AND COMPETITORS

No replacement of boats or competitors for whatever reason will be allowed after fishing has started. Anglers may not effect a capture or tag & release on any other vessel than the vessel he/she is registered on. Captured fish, tag & release card, and all equipment used in the capture or tag must be presented to the weigh station on the vessel on which the capture, tag & release was effected and may not be transferred to another vessel, however in the case of an emergency situation the Tournament Committee may at their discretion allow the transfer of an angler/fish and equipment used to effect the capture or tag.

## ■ STATUTORY REQUIREMENTS

All anglers must carry Saltwater Fishing Licenses (If Applicable). Bag limit and size restrictions must also be adhered to. All competitors are reminded that it is an offence to tie any vessel to objects, such as wave riders, FADs or fish trap buoys.

## ■ CONDUCT

It is an expectation that all participants will conduct themselves in a responsible and courteous manner to Tournament Officials and other Competitors at all times throughout the Tournament. Penalties for misconduct may include disqualification from the Tournament.

## ■ FISHING RULES

Fish are to be caught in accordance with rules and tackle regulations as laid down by GFAA and NSWGFA for capture and tag and release.

The use of Identifiable Marlin carcasses is prohibited for use as tethered burley. Burley secured under floats is prohibited.

## ■ LINE AND BACKING

1. The use of backing is permissible. (Note: there is no restriction on the type or size of backing used as long as it is Monofilament, multifilament, lead core multifilament but not wire.
2. The catch shall be classified under the breaking strength of the first five metres of the line preceding the double, leader and hook. This section must be comprised of a single homogenous piece of line (for record claims, 16m of the single line must be supplied).
3. That line (first 5 metres as described in point 2), MUST be Monofilament rated at the Breaking Strain of the line class being claimed.

## ■ LINE CLASSES

Line class that may be fished are: 4kg, 6kg, 8kg, 10kg, 15kg, 24kg, 37kg and 60kg

## ■ MINIMUM WEIGHTS

	Senior Anglers	Junior & Small Fry Anglers
<b>MARLIN</b>	70kg for 4-10kg line classes 90kg for 15-60kg line classes	60kg for 4-10kg line classes 80kg for 15kg line classes
<b>SHARKS</b> <i>Table species</i>	70kg for 6-10kg line classes 90kg for 15-37kg line classes 130kg for 60kg line classes	60kg for 6-10kg line classes 80kg for 15-37kg line classes 120kg for 60kg line classes

**SHARKS - Both these species are classified as NON Table Sharks.**

## TIGER SHARKS

### New Min. weights

Line Classes 6 – 10kg	120kg which is double what we currently have, current is 60kg
Line Classes 15 – 24kg	200kg which is an increase of 120kg, current is 80kg
Line Classes 37 – 60kg	250kg which is an increase of 160kg on 37kg and 130kg on 60kg, current is 90kg on 37kg and 120kg on 60kg

## BLUE SHARKS

### New Min. weights

Line Classes 6 – 10kg	100kg which is an increase of 40kg, current is 60kg
Line Classes 15 – 24kg	125kg which is an increase of 45kg, current is 80kg
Line Classes 37 – 60kg	150kg which is an increase of 30kg, current on 120kg on 60kg

**Yellowfin & Southern Bluefin Tuna:** 15kg on line classes up to & including 15kg line, equal to line class for over 15 kg line and for junior anglers equal to the line class in all cases.

**Other Game Fish & Broadbill:** Minimum weight to be equal to line class.

## ■ CAPTURE POINTSCORE

Double points awarded for Marlin and Broadbill.

Triple points awarded for Other Game Fish.

One quarter points for Blue Sharks and

Half points for all other eligible species of shark.

All captures on line classes up to and including 10kg shall score a maximum of 15,000 points plus one point per kilo of the weight of fish weight; for 15kg and over 20,000 points plus one point per kilo of the weight of fish weight.

## ■ TAG AND RELEASE POINTSCORE

Grey Nurse Sharks and White Sharks are not eligible for tag and release points, additionally anglers should be made aware that these sharks are a protected species and are not to be targeted and if are incidentally hooked are to be released immediately.

\*Anglers may tag and release a maximum of five (5) Yellowtail Kingfish (minimum length 70cm) and five (5) Mahi Mahi (minimum length 60cm) per day with a boat limit of 10 per day for each species. Kawa Kawa and Striped Tuna are eligible for junior points only and not boat points. Striped tuna are for catch and release only - same points as per NSWGFA point score. Use measure and release cards. Minimum length for sharks is 100cm.

**The Method of releasing a tagged fish** – The hook is to be removed or the leader cut as close as possible to the fish.

NSWGFA Eligible Tag Species - see enclosed table.

## ■ CIRCLE HOOKS ONLY

Are permitted to be used for livebaiting and trolling natural baits (whether live, dead, mutilated or dissected) except in the case of targeting Narrow Barred Mackerel (Scomberomorus Commerson. NB: no points to be scored for any species caught while using livebaits and/or trolling natural baits with “J” hooks. **Circle**

**Hook Definition:** A hook with its point turned 90 degrees or less back to the shank of the hook. All Billfish must be tagged with the Billfish Tag this is the only tag that will be recognised for billfish in this tournament.



## ■ TAG & RELEASE TIME

Tag & release time and the line class must be advised otherwise time will be deemed to be end of fishing for that day and the line class will be deemed to be 60kg.

## ■ TOURNAMENT FISHING BOUNDARIES

Northern: East of Stanwell Park 34.14 00

Southern: Cape St George 35.15.00

No fishing inside Jarvis Bay is allowed, with a boundary line from Point Perpendicular to Bowen Island with the exception of taking fish for bait.

Vessels travelling by sea, must be within the boundaries and sign on with Tournament Base prior to commencing fishing and sign off when leaving the fishing boundaries.

## ■ FISHING TIMES

**Saturday:** 7:00 - 17:00 **Sunday:** 7:00 - 15:00

Fish that are being fought and notice given to Tournament Base prior to the cessation of fishing (5pm) on Saturday may continue to be fought.



# FISH CLASSIC RULES



On Sunday all fish captured or tagged and released must be registered at the Weigh Station by cut off time of 4pm. Fish being registered at the Weigh Station after that time will not be eligible for the tournament.

## ■ WEIGHSTATION TIMES

**Saturday** 4pm until return of all boats, **Sunday** 12 midday and closes at 4pm

## ■ WEIGHSTATION PROCEDURES

**All captures, or Tag & Release must be called in to gamefish base when completed with time, angler and line class.**

Once boats enter the vicinity of the weigh station, they are under the control of the Tournament Official at the weigh station, boats must have completed and have ready for presentation all equipment used to effect the capture or tag & release and applicable paperwork.

Captured fish **MUST** be brought to the Weigh Station by sea. Tag and Release cards may be sent to weigh master via text or email. Fish capture or Tag and Release must be called in to gamefish base upon capture. The Tournament Capture form must be filled out with relevant information regarding species, line class, angler, and time of capture or tag & release.

The white tournament capture form, provided to each boat, must be used and must include date and time of capture/tag. Failure to do so will render the fish ineligible for countback in tied situations (angler numbers must be used).

The NSWGFA Capture Form (White Copy) may also be presented to Weighmaster who will sign and return with tag card to angler, whose responsibility is to give to their club recorder.

Boats **MUST** contact weigh station on Channel VHF82 and request permission to weigh and/or present tagging details.

## ■ TIED RESULTS

In the case of a tied result the trophy shall be awarded to the first to reach the winning score. Countbacks will be based on the time of capture or tag and release. If for some reason there is no time entered on a return, the time will be set at the close of fishing on that day.

## ■ FISH DISPOSAL/HANDLING

All fish should be removed from the weigh station after weighing. Competitors (and boat crew) must not, without a tournament official's permission, clean or fillet fish or remove shark jaws in the vicinity of the weigh station, not at any time near any beach or harbour foreshore area. Unwanted fish and all sharks must be taken at least 2nm outside the port and disposed of in an appropriate manner after weighing. Note: fish **MUST NOT** be disposed of in a Marine Park. Failure to comply with this rule will invoke a penalty against the offending boat.

In the event of any shark or marlin given away for eating, only the fillets may be given and the remaining carcass is the responsibility of the skipper and crew.

## ■ SALE OF FISH

Any fish weighed shall not be sold or bartered. Such fish shall be ineligible for any trophies or awards. Anyone found to have sold or bartered their catch will be disqualified from the tournament.

## ■ CAPTURE AND TAG AND RELEASE RETURNS

Tournament capture certificates as supplied, must be used for capture and tag and release returns. They must be completed and correct in all details prior to arriving at the Weigh Station. This includes the time of capture or tag and release. Trophies will be awarded on the basis of the information given. Incomplete or incorrect returns may result in disqualification of the fish on that return. If the time of capture or tag and release is not entered on any return, the time will be set at the close of fishing on that day.

## ■ RADIO COMMUNICATIONS

All competing vessels must be equipped with a serviceable VHF radio. Radio schedules will be conducted in accordance with the adopted "NSWGFA Guidelines for Radio Schedules for Tournaments". Radio schedules will be conducted by "Tournament Base" at 2 hourly intervals commencing at 8.10am on VHF Channel 82. Tournament base shall continue to operate until all vessels are accounted for each day. Vessels must sign on and off when leaving and entering Harbour. Vessels failing to log on or off may be subject to a penalty of 10,000 capture and 10,000 tag and release points. When responding to calls from Tournament Base, teams are to give their team number followed by the vessel name and position from the schedule map provided and their status. Reporting is to be accurate using the zero, zero, zero system (strikes, hook ups and captures or tag and release), species, line class and angler number. Teams are requested to report captures or tag and releases during the Radio Schedules only. Any hook-ups after the 4.10pm sched Saturday and the 2.10pm sched Sunday and before close of fishing, must be called into Tournament Base. Any boat experiencing a breakdown of communication is to immediately make contact with another boat and have them advise Tournament Base of the problem

and then return immediately to port for repairs. Any boat that fails to contact the Tournament Base on two consecutive Skeds, a search will be instigated by the Statutory authorities.

**Note:** Boats must maintain radio silence for 10 minutes before finish of fishing to allow for report of late hook-ups.

## ■ MISCONDUCT

The Tournament Committee may on its own initiative, investigate and act upon any incident of the misconduct by an angler on a boat, be he/she registered for the tournament, or not occurring during the tournament. The Tournament Committee may impose penalties of loss of points, disqualification of fish, angler, boat or team and refusal of entry to any future tournaments. All competitors are reminded that as members of a club they are regarded as representatives of that club, as such, unbecoming behaviour reflects adversely on the club and indeed on all Game Fishers, hence, the Tournament Committee reserves the right to take any action it deems necessary in these circumstances.

## ■ PROTESTS

Protests are to be made in writing, signed by the Team Captain and submitted to the tournament committee.

Saturday: Prior to 8pm Sunday: Prior to 4.30pm

All protests will be dealt with by the tournament committee, their decision shall be final. \*All tackle involved in a protest shall be held by the Tournament Committee until the protest is resolved.

## ■ BAD WEATHER

To avoid taking unnecessary risks in the event of bad weather, the Tournament Committee will decide whether the day will be a competition day or not. Boats should establish early morning contact with Tournament Base. In the event of bad weather developing after the start of fishing, the Tournament Committee will confer and decide whether or not the competition will be called off for the remainder of the day. Any fish caught or tagged prior to the tournament being cancelled will be eligible for the competition. Note: A declaration of a Gale Warning by the appropriate government weather authority will automatically require the cancellation of the tournament for that day. In the event of a declaration whilst vessels are at sea, such vessels are to cease fishing immediately and return to port. The committee accepts no responsibility for decisions made by individuals whether to put to sea or not, having regard to the Committee's decision on the Tournament for the day. The ultimate decision on return to harbour remains with the competitors.

In the event of cancellation of the days fishing, boats will be advised by Tournament Base via radio including any alterations to social activities. Cancellation will only apply until Gale Warning is lifted.

## ■ CANCELLATION OF TOURNAMENT

In the event of the tournament being cancelled all boats will be advised via radio communication. Any fish caught or tagged prior to the tournament being cancelled will be eligible for points. In the event of the cancellation of both Saturday and Sundays fishing by the Tournament Committee, the tournament will be rescheduled to a date to be advised. Refund of monies or part thereof is at the sole discretion of the Tournament Committee.

## ■ SEAWORTHINESS OF BOATS

It is the owner's responsibility to ensure that their boat is completely seaworthy and meets NSW Maritime Authority safety standards and the safety standards of that owners Club. A "Boat Safety Rescue Information Form" is included as part of the entry form and must be completed and signed. All boats must carry **406Mhz EPIRB** and have a working marine radio fitted which must be on **VHF frequency Channel 82**.

Kiama Gamefishing Club accepts no responsibility whatsoever for any action caused or any damage arising out of the conduct of this tournament.

## ■ TOURNAMENT BRIEFING

The Tournament Briefing will be held at Kiama Leagues Club (Cnr Terralong and Collins Streets Kiama) on **Friday, 5th April 2024 at 7pm in board room**. Dinner may be purchased from 5.30pm in the Bistro. Finger food provided at the briefing from 7pm.

## ■ SOCIAL ACTIVITIES

**Saturday morning BBQ**; sausage sandwiches at Kiama boat ramp from 5am.

**Tournament Dinner** will be held at Kiama Leagues Club, commencing at **7.30pm in the Auditorium on Saturday 6th April 2024**. No additional tickets will be allocated after the briefing. **Lucky Angler Draw (early entry)** angler must be present. Raffle tickets \$2.00 each. **Raffle** winner of each draw selects a prize, until all prizes are drawn on Saturday night at the Tournament Dinner. **Lucky Draw Prizes** will be drawn at Tournament Dinner. **Presentation: Sunday 7th April 5:00pm. EL Corazon** 6 Terralong Street (opposite boat ramp parking area). Snacks supplied and beverages available from 4:00pm.

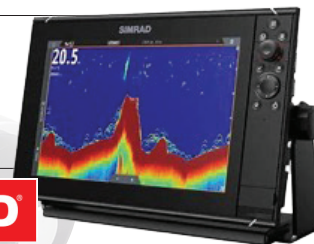


### CAPTURE



AWARD	PRIZE	SPONSOR
<b>Champion Boat</b>	Shimano Talica 50, Speed Master Game Rod, Power Pro 50lb 3000yds , JB lure , <i>Hand Crafted Trophy</i>	
<b>Heaviest Marlin (over 140kg)</b>	\$2000 cash	
<b>Heaviest Tuna (over 30kg)</b>	\$1000 cash	
<b>Heaviest OGF</b>	Rapala R Type Reel and Rod, Sufix 37kg braid, \$250 Ocean Storm Voucher	
<b>Heaviest Shark (over 200kg)</b>	Shimano 50A Tiagra ,1000m 15 kg line	
<b>Champion Female Senior Angler</b>	Shimano 30A Tiagra, 1000m 10kg line, and JB lure	
<b>Champion Junior</b>	Shimano 20A Tiagra, 1000m 10kg line, JB lure, \$250 Ocean Storm Voucher	
<b>Champion Small Fry</b>	Baitrunner 8000, Terez 69MPW Rod , 10kg line, \$250 Ocean Storm Voucher	<b>Trevor &amp; Gloria Newcombe</b>

### TAG & RELEASE



AWARD	PRIZE	SPONSOR
<b>Champion Boat</b>	CASH \$2000, Simrad Evo Sounder, JB Lure, <i>Hand Crafted Trophy</i>	
<b>Most Marlin T &amp; R - Boat</b>	CASH \$1000, Trophy Hunter Dredge	
<b>Highest Pointscore Female Senior Angler</b>	Shimano 50A Tiagra , 1000m 24kg Line	
<b>Most Sharks T &amp; R - Boat</b>	50A Tiagra ,1000m 15kg Line	<b>T &amp; M DOWLING PLUMBING</b>
<b>Most OGF Tag &amp; Release</b>	Wellsy Lure Pack, 1000m 24kg line \$250 Ocean Storm Voucher	
<b>Champion Junior T &amp; R</b>	Shimano 20A Tiagra, 1000m 10kg line, JB lure, \$250 Ocean Storm Voucher	
<b>Champion Small Fry</b>	Shimano Baitrunner 8000, Terez 69MPW Rod, 1000m 10kg line, \$250 Voucher	

*NB: Proof of Club Membership may be required for category winners.*

- LUCKY BOAT DRAW ..... **JB LURES** given away on every sked, **FISHING STATION** prize packs, **SUZUKI** Prize pack
- LUCKY ANGLER DRAW ..... Stella 14000 and Trophy Hunter Rod
- TOURNAMENT BOXES ..... (1 per Boat) Courtesy of - **A A PLUS PLASTICS**
- RAFFLE..... Win a **SHIMANO** 30A Tiagra Reel, Engine service to value of \$500 courtesy of **SOUTH COAST SUZUKI MARINE**

**For accommodation: [www.eastsbeach.com.au](http://www.eastsbeach.com.au), [www.kiamacoast.com.au](http://www.kiamacoast.com.au) or Kiama Tourism (02) 4232 3322**