

FIFTH AMENDMENT TO
DECLARATION OF CONDOMINIUM REGIME
FOR THE PRESERVE AT MAYFIELD RANCH CONDOMINIUMS

This Fifth Amendment to Declaration of Condominium Regime for The Preserve at Mayfield Ranch Condominiums (the "Amendment") is made Allen Group II, LLC, a Mississippi limited liability company D/B/A The Preserve at Mayfield Ranch, LLC ("Declarant"), and is as follows:

RECITALS:

A. The Preserve at Mayfield Ranch Condominiums, a condominium regime (the "Regime"), located in Williamson County, Texas, was established pursuant to that certain Declaration of Condominium Regime for The Preserve at Mayfield Ranch Condominiums, recorded as Document No. 2013005392, in the Official Public Records of Williamson County, Texas, as amended by that certain First Amendment to Declaration of Condominium Regime for the Preserve at Mayfield Ranch Condominiums, recorded as Document No. 2013018165, in the Official Public Records of Williamson County, Texas, as amended by that certain Second Amendment to Declaration of Condominium Regime for the Preserve at Mayfield Ranch Condominiums, recorded as Document No. 2013037094, in the Official Public Records of Williamson County, Texas, as amended by that certain Third Amendment to Declaration of Condominium Regime for the Preserve at Mayfield Ranch Condominiums, recorded as Document No. 2013063622, in the Official Public Records of Williamson County, Texas, and as amended by that certain Fourth Amendment to Declaration of Condominium Regime for the Preserve at Mayfield Ranch Condominiums, recorded as Document No. 2013088368, in the Official Public Records of Williamson County, Texas (the "Declaration").

B. Pursuant to *Provision A.3.10* of Appendix "A" to the Declaration, Declarant, during the Development Period, may amend the Declaration unilaterally and without the consent of other Owners or any mortgagee to create, subdivide, combine or reconfigure Units, General Common Elements and Limited Common Elements within the Property, in the exercise of statutory development rights.

C. Pursuant to Section 82.060 of the Texas Uniform Condominium Act, to exercise a statutory development right, Declarant must prepare, execute and record an amendment to the Declaration and record new plats and plans for that real property.

D. In accordance with *Provision A.3.8* of Appendix "A" to the Declaration, Declarant has reserved the right, during the Development Period, to create Units, General Common Elements, and Limited Common Elements within the Property. The "Development Period" as such term is defined in the Declaration, is a fifteen (15) year period commencing on the date the Declaration was recorded in the Official Public Records of Williamson County, Texas. The Declaration was recorded in the Official Public Records of Williamson County, Texas, on January 17, 2013; as such, the Development Period has not expired.

E. Declarant desires to amend the Declaration for the purpose of creating thirty-five (35) additional Units. The total number of Units within the Regime after giving effect to this Amendment is equal to one hundred and two (102). Declarant has reserved the right in the Declaration to create a total of two hundred and sixty (260) Units.

FIFTH AMENDMENT TO
DECLARATION OF CONDOMINIUM REGIME
THE PRESERVE AT MAYFIELD RANCH CONDOMINIUMS

NOW THEREFORE, the Declaration is hereby amended as follows:

1. **Creation of Units.** In accordance with the rights reserved by the Declarant pursuant to Section 5.1 of the Declaration and Appendix "A" attached thereto, Declarant hereby creates thirty-five (35) Units, which are designated as Unit Nos. 236, 238, 240, 242, 244, 333, 334, 335, 336, 337, 338, 339, 340, 341, 342, 343, 345, 347, 349, 351, 501, 502, 503, 504, 505, 506, 507, 508, 509, 510, 511, 512, 513, 514 and 516 (collectively, the "New Units"). The New Units are hereby classified as Units which **MUST BE BUILT**.

2. **Replacement of Attachment 1.** Attachment 1 to the Declaration is hereby deleted in its entirety and the Plats and Plans attached hereto as Exhibit "A" (the "New Plats and Plans") are substituted in their place. The New Plats and Plans: (i) assign an identifying number to all Units; (ii) describe the portion of the limited common elements created or assigned to all Units; and (iii) include the information required by Section 82.059 of the Texas Uniform Condominium Act.

4. **Replacement of Attachment 3.** The Common Interest Allocation assigned to each Unit within the Regime, after the addition of the New Units, is set forth on Exhibit "B", attached hereto. Exhibit "B", attached hereto, supersedes and replaces Attachment 3 attached to the Declaration.

5. **Miscellaneous.** Any capitalized terms used and not otherwise defined herein shall have the meanings set forth in the Declaration. Unless expressly amended by this Amendment, all other terms and provisions of the Declaration remain in full force and effect as written, and are hereby ratified and confirmed.

EXECUTED to be effective as of the 29 day of May, 2014.

DECLARANT:

ALLEN GROUP II, LLC, a Mississippi limited liability company
d/b/a THE PRESERVE AT MAYFIELD RANCH, LLC

By: [Signature]
Printed Name: David B. Blackburn
Title: Manager

THE STATE OF ^{MS}TEXAS §
COUNTY OF Lafayette §

This instrument was acknowledged before me this 29th day of May, 2014, by David B. Blackburn manager of Allen Group II, LLC, a Mississippi limited liability company d/b/a The Preserve at Mayfield Ranch, LLC, on behalf of said limited liability company.

(SEAL)



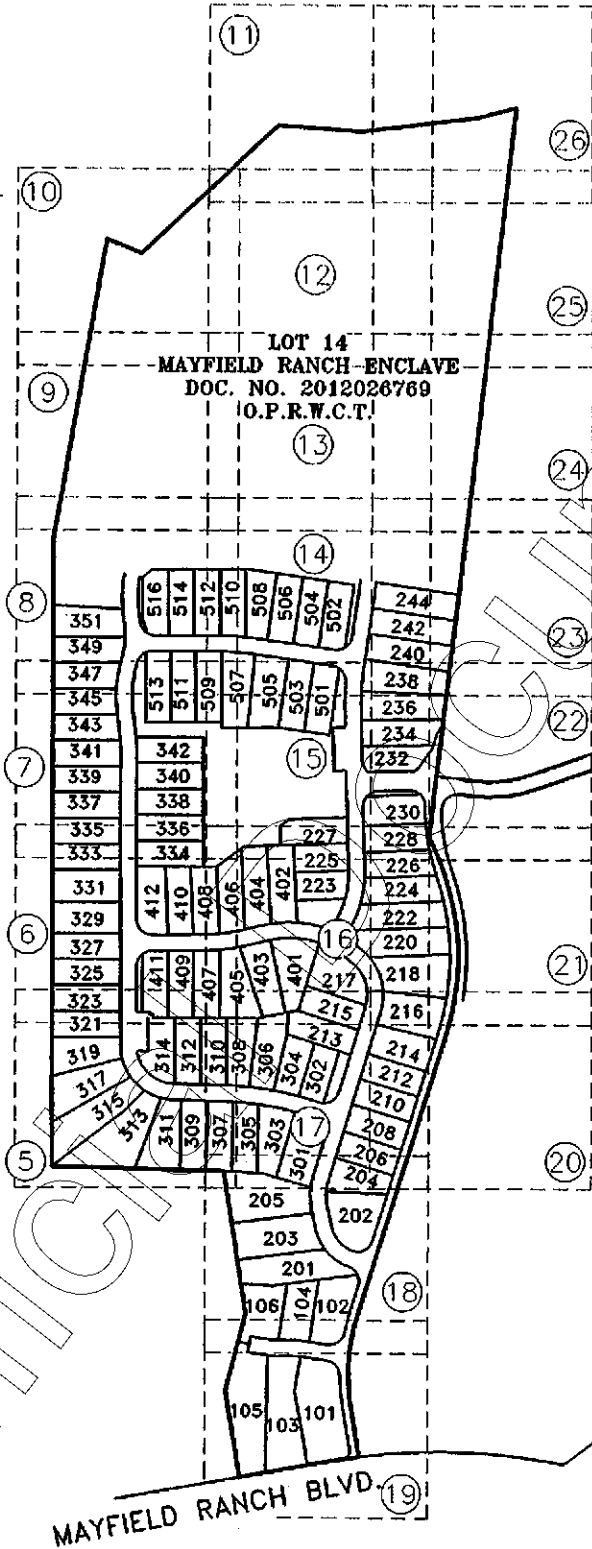
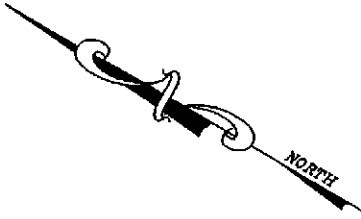
[Signature]
Notary Public Signature

EXHIBIT "A"

ATTACHMENT 1 TO THE DECLARATION OF CONDOMINIUM REGIME

SEE SHEET 2 OF 26 FOR ORIGINAL CERTIFICATION

Unofficial Document



F. M. 1 4 3 1 (200' R.O.W.)

"ATTACHMENT 1"

PRESERVE AT MAYFIELD RANCH CONDOMINIUMS
 BEING 26.65 ACRES OF LAND OUT OF THE EPHRAIM EVANS
 SURVEY, ABSTRACT NUMBER 212 IN WILLIAMSON COUNTY,
 TEXAS AND BEING KNOWN AS LOT 14, BLOCK A,
 LOT 14 MAYFIELD RANCH ENCLAVE.
 A SUBDIVISION OF RECORD IN DOCUMENT NUMBER
 2012026769 OF THE OFFICIAL PUBLIC RECORDS OF
 WILLIAMSON COUNTY, TEXAS AS CONVEYED TO
 ALLEN GROUP II, LLC BY INSTRUMENT OF RECORD IN
 DOCUMENT NUMBER 2007016507 OF THE OFFICIAL PUBLIC
 RECORDS OF WILLIAMSON COUNTY, TEXAS

BASELINE LAND SURVEYORS, INC.
 PROFESSIONAL LAND SURVEYING SERVICES
 8333 CROSS PARK DRIVE
 AUSTIN, TEXAS 78757
 OFFICE: 512.374.9722 FAX: 512.873.9743
 ron-baseline@austln.r.r.com

File: S:\Mayfield\Preserve at Mayfield Ranch\Draw\Preserve at Mayfield Ranch CONDO BASE	Snapshot: Sy-Condo Regime
Job No.	Scale (Hor.):
Date: 06/04/14	Scale (Vert.):
Checked By: JSL	Drawn By: RLW

SHEET
1 of 26

"ATTACHMENT-1"

PRESERVE AT MAYFIELD RANCH CONDOMINIUMS

Plats and Plans

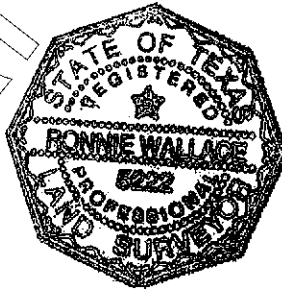
§ Certification of Surveyor §

The attached plats and plans, attached hereto as "Attachment-1" contain the information required by Section 82.059 of the Texas Uniform Condominium Act, as applicable.

Ronnie Wallace

Ronnie Wallace
R.P.L.S. No. 5222

Date: *4 June 2014*



"ATTACHMENT 1"

PRESERVE AT MAYFIELD RANCH CONDOMINIUMS BEING 26.65 ACRES OF LAND OUT OF THE EPHRAIM EVANS SURVEY, ABSTRACT NUMBER 212 IN WILLIAMSON COUNTY, TEXAS AND BEING KNOWN AS LOT 14, BLOCK A, LOT 14 MAYFIELD RANCH ENCLAVE, A SUBDIVISION OF RECORD IN DOCUMENT NUMBER 2012026769 OF THE OFFICIAL PUBLIC RECORDS OF WILLIAMSON COUNTY, TEXAS AS CONVEYED TO ALLEN GROUP II, LLC BY INSTRUMENT OF RECORD IN DOCUMENT NUMBER 2007016507 OF THE OFFICIAL PUBLIC RECORDS OF WILLIAMSON COUNTY, TEXAS

BASELINE LAND SURVEYORS, INC.
PROFESSIONAL LAND SURVEYING SERVICES
8333 CROSS PARK DRIVE
AUSTIN, TEXAS 78757
OFFICE: 512.374.9722 FAX: 512.873.9743
ron-baseline@austin.rr.com

File: S:\Mayfield\Preserve at Mayfield Ranch\Draw\Preserve at Mayfield Ranch CONDO BASE	
Job No.	Snapshot: 5y-Condo Regime
Scale (Hor.):	Scale (Vert.):
Date: 05/04/14	Checked By: JSL Drawn By: RLW

SHEET
2 of 26

GENERAL NOTES

- 1.) ALL IMPROVEMENTS AND LAND REFLECTED ON THE PLAT ARE DESIGNATED AS GENERAL COMMON ELEMENTS, SAVE AND EXCEPT PORTIONS OF THE REGIME DESIGNATED AS LIMITED COMMON ELEMENTS OR "L.C.E." OR UNITS: (i) IN THE DECLARATION OF CONDOMINIUM REGIME FOR PRESERVE AT MAYFIELD RANCH CONDOMINIUMS (THE "DECLARATION") OR (ii) ON THE PLATS AND PLANS OF THE REGIME.
- 2.) OWNERSHIP AND USE OF CONDOMINIUM UNITS IS SUBJECT TO THE RIGHTS AND RESTRICTIONS CONTAINED IN THE DECLARATION.
- 3.) EACH UNIT, BUILDING, LIMITED COMMON ELEMENT AND GENERAL COMMON ELEMENT IS SUBJECT TO SPECIAL RIGHTS RESERVED BY THE DECLARANT AS PROVIDED IN APPENDIX "A" OF THE DECLARATION OF CONDOMINIUM REGIME FOR PRESERVE AT MAYFIELD RANCH CONDOMINIUMS. PURSUANT TO SUCH PROVISIONS, AMONG OTHER THINGS, DECLARANT HAS RESERVED THE RIGHT TO: (i) COMPLETE OR MAKE IMPROVEMENTS INDICATED ON THE PLAT AND PLANS, AS PROVIDED IN APPENDIX "A" OF THE DECLARATION; (ii) EXERCISE ANY DEVELOPMENT RIGHT PERMITTED BY THE TEXAS UNIFORM CONDOMINIUM ACT AND THE DECLARATION, INCLUDING THE ADDITION OF REAL PROPERTY TO THE REGIME DESCRIBED ON THIS PLAT AS "ADDITIONAL PROPERTY WHICH MAY BE ADDED TO THE REGIME," WHICH PROPERTY MAY BE ADDED AS UNITS, GENERAL COMMON ELEMENTS AND/OR LIMITED COMMON ELEMENTS, AS PROVIDED IN SECTION 2.2 OF THE DECLARATION AND APPENDIX "A" OF THE DECLARATION; (iii) MAKE THE PROPERTY PART OF A LARGER CONDOMINIUM OR PLANNED COMMUNITY, AS PROVIDED IN APPENDIX "A" OF THE DECLARATION; (iv) USE UNITS OWNED OR LEASED BY DECLARANT AS MODELS, STORAGE AREAS, AND OFFICES FOR THE MARKETING, MANAGEMENT, MAINTENANCE, CUSTOMER SERVICE, CONSTRUCTION, AND LEASING OF THE PROPERTY, AS PROVIDED IN APPENDIX "A" OF THE DECLARATION, AND (v) APPOINT OR REMOVE ANY DECLARANT-APPOINTED OFFICER OR DIRECTOR OF THE ASSOCIATION DURING THE DECLARANT CONTROL PERIOD (AS DESCRIBED IN THE DECLARATION) CONSISTENT WITH THE TEXAS UNIFORM CONDOMINIUM ACT, AS PROVIDED IN APPENDIX "A" OF THE DECLARATION. AS PROVIDED IN APPENDIX "A" OF THE DECLARATION, FOR PURPOSES OF PROMOTING, IDENTIFYING, AND MARKETING THE PROPERTY, DECLARANT RESERVES AN EASEMENT AND RIGHT TO PLACE OR INSTALL SIGNS, BANNERS, FLAGS, DISPLAY LIGHTING, POTTED PLANTS, EXTERIOR DECORATIVE ITEMS, SEASONAL DECORATIONS, TEMPORARY WINDOW TREATMENTS, AND SEASONAL LANDSCAPING ON THE PROPERTY, INCLUDING ITEMS AND LOCATIONS THAT ARE PROHIBITED TO OTHER OWNERS AND RESIDENTS. DECLARANT RESERVES AN EASEMENT AND RIGHT TO MAINTAIN, RELOCATE, REPLACE, OR REMOVE THE SAME FROM TIME TO TIME WITHIN THE PROPERTY. AS PROVIDED IN APPENDIX "A" OF THE DECLARATION, DECLARANT HAS AN EASEMENT AND RIGHT OF INGRESS AND EGRESS IN AND THROUGH THE COMMON ELEMENTS (AS DEFINED IN THE DECLARATION) AND UNITS OWNED OR LEASED BY DECLARANT FOR PURPOSES OF CONSTRUCTING, MAINTAINING, MANAGING, AND MARKETING THE PROPERTY, AND FOR DISCHARGING DECLARANT'S OBLIGATIONS UNDER THE TEXAS UNIFORM CONDOMINIUM ACT AND THE DECLARATION.

"ATTACHMENT 1"

PRESERVE AT MAYFIELD RANCH CONDOMINIUMS BEING 26.65 ACRES OF LAND OUT OF THE EPHRAIM EVANS SURVEY, ABSTRACT NUMBER 212 IN WILLIAMSON COUNTY, TEXAS AND BEING KNOWN AS LOT 14, BLOCK A, LOT 14 MAYFIELD RANCH ENCLAVE, A SUBDIVISION OF RECORD IN DOCUMENT NUMBER 2012026769 OF THE OFFICIAL PUBLIC RECORDS OF WILLIAMSON COUNTY, TEXAS AS CONVEYED TO ALLEN GROUP II, LLC BY INSTRUMENT OF RECORD IN DOCUMENT NUMBER 2007016507 OF THE OFFICIAL PUBLIC RECORDS OF WILLIAMSON COUNTY, TEXAS

BASELINE LAND SURVEYORS, INC.
PROFESSIONAL LAND SURVEYING SERVICES
 8333 CROSS PARK DRIVE
 AUSTIN, TEXAS 78757
 OFFICE: 512.374.9722 FAX: 512.873.9743
 ron-baseline@austin.rr.com

File: S:\Southpark Condominiums\Draw\Southpark Condominium Regime Base	
Job No.	Snapshot: Sy-Condo Regime
Scale (Hor.):	Scale (Vert.):
Date: 06/04/14	Checked By: JSL Drawn By: RLW

SHEET
 3 of 26

LEGEND

- 1/2" IRON REBAR FOUND (UNLESS OTHERWISE NOTED)
- ⊙ IRON PIPE FOUND
- ▲ NAIL FOUND
- 1/2" IRON REBAR SET W/PLASTIC CAP WHICH READS "BASELINE INC."*
- △ CALCULATED POINT
- R.O.W. RIGHT-OF-WAY
- P.U.E. PUBLIC UTILITY EASEMENT
- L.C.E. LIMITED COMMON ELEMENT
- G.C.E. GENERAL COMMON ELEMENT
- O.R.W.C.T. OFFICIAL RECORDS OF WILLIAMSON COUNTY, TEXAS
- P.R.W.C.T. PLAT RECORDS OF WILLIAMSON COUNTY, TEXAS
- O.P.R.W.C.T. OFFICIAL PUBLIC RECORDS OF WILLIAMSON COUNTY, TEXAS
- ESMT. 1 WATERLINE EASEMENT-DOC. NO. 2013010507, O.P.R.W.C.T.
- ESMT. 2 WATERLINE EASEMENT-DOC. NO. 2013009696, O.P.R.W.C.T.
- ESMT. 3 WATERLINE EASEMENT-DOC. NO. 2013108998, O.P.R.W.C.T.
- ESMT. 4 WATERLINE EASEMENT-DOC. NO. 2013108999, O.P.R.W.C.T.
- ESMT. 5 DRAINAGE EASEMENT-DOC. NO. 2014003440, O.P.R.W.C.T.

*WHERE UNIT CORNER FALLS ON CURBING, A CHISELED "X" IS SET

"ATTACHMENT 1"

**PRESERVE AT MAYFIELD RANCH CONDOMINIUMS
BEING 26.65 ACRES OF LAND OUT OF THE EPHRAIM EVANS
SURVEY, ABSTRACT NUMBER 212 IN WILLIAMSON COUNTY,
TEXAS AND BEING KNOWN AS LOT 14, BLOCK A,
LOT 14 MAYFIELD RANCH ENCLAVE,
A SUBDIVISION OF RECORD IN DOCUMENT NUMBER
2012026769 OF THE OFFICIAL PUBLIC RECORDS OF
WILLIAMSON COUNTY, TEXAS AS CONVEYED TO
ALLEN GROUP II, LLC BY INSTRUMENT OF RECORD IN
DOCUMENT NUMBER 2007016507 OF THE OFFICIAL PUBLIC
RECORDS OF WILLIAMSON COUNTY, TEXAS**

BASELINE LAND SURVEYORS, INC.
PROFESSIONAL LAND SURVEYING SERVICES
8333 CROSS PARK DRIVE
AUSTIN, TEXAS 78757
OFFICE: 512.374.9722 FAX: 512.873.9743
ron-baseline@austin.rr.com

File: S:\Southpark Condominiums\Drawg\Southpark Condominium Regime Base	
Job No.	Snapshot: Sy-Condo Regime
Scale (Hor.):	Scale (Vert.):
Date: 06/04/14	Checked By: JSL Drawn By: RLW

SHEET
4 of 26

TABLE I-CURVES

CURVE TABLE					
CURVE	RADIUS	LENGTH	DELTA	BEARING	CHORD
C1	25.00'	38.98'	89°19'36"	N75°05'27"W	35.15'
C2	25.00'	22.55'	51°41'07"	S86°05'18"W	21.80'
C3	25.00'	16.42'	37°38'29"	N49°14'54"W	16.13'
C4	25.00'	39.56'	90°40'19"	S14°54'36"W	35.56'
C5	2.50'	3.93'	90°00'00"	S15°14'45"W	3.54'
C6	300.00'	65.64'	12°32'07"	S36°41'37"E	65.50'
C7	300.00'	25.04'	4°46'56"	S32°49'01"E	25.03'
C8	300.00'	40.60'	7°45'12"	S39°05'05"E	40.57'
C9	326.00'	71.31'	12°32'02"	S36°41'40"E	71.17'
C10	326.00'	24.80'	4°21'30"	S32°36'24"E	24.79'
C11	326.00'	33.59'	5°54'14"	S37°44'16"E	33.58'
C12	326.00'	12.92'	2°16'17"	S41°49'32"E	12.92'
C13	140.00'	80.05'	32°45'33"	N26°34'54"W	78.96'
C14	166.00'	85.15'	29°23'24"	N28°15'59"W	84.22'
C15	166.00'	36.79'	12°41'49"	N19°55'12"W	36.71'
C16	166.00'	42.12'	14°32'21"	N33°32'17"W	42.01'
C17	166.00'	6.24'	2°09'13"	N41°53'04"W	6.24'
C18	140.00'	120.43'	49°17'19"	N18°19'01"W	116.76'
C19	155.00'	81.42'	30°05'52"	N73°55'53"E	80.49'
C20	155.00'	46.15'	17°03'30"	N67°24'42"E	45.98'
C21	155.00'	35.28'	13°02'22"	N82°27'38"E	35.20'
C22	25.00'	33.79'	77°26'54"	S52°17'44"E	31.28'
C23	140.00'	40.39'	16°31'46"	N01°56'15"W	40.25'
C24	65.00'	80.46'	70°55'38"	N41°47'27"E	75.42'
C25	91.00'	112.65'	70°55'38"	N41°47'27"E	105.59'
C26	91.00'	59.73'	37°36'20"	N37°55'45"E	58.66'
C27	91.00'	20.33'	12°47'56"	N12°43'36"E	20.29'
C28	25.00'	35.86'	82°10'49"	S47°25'03"W	32.86'
C29	25.00'	27.41'	62°48'34"	S37°43'55"W	26.05'
C30	25.00'	8.45'	19°22'15"	S78°49'20"W	8.41'
C31	181.00'	93.59'	29°37'30"	N73°41'42"E	92.55'
C32	181.00'	37.64'	11°54'55"	N82°33'00"E	37.57'
C33	181.00'	43.02'	13°37'09"	N69°46'58"E	42.92'
C34	181.00'	12.92'	4°05'26"	N60°55'40"E	12.92'
C35	25.00'	39.27'	90°00'00"	N76°07'02"W	35.36'
C36	25.00'	17.90'	41°00'47"	S79°23'21"W	17.52'
C37	25.00'	21.37'	48°59'13"	N55°36'39"W	20.73'
C38	25.09'	40.32'	92°04'32"	N15°08'10"E	36.12'
C39	24.74'	18.52'	42°52'53"	N09°46'14"W	18.09'
C40	24.62'	21.84'	50°50'09"	N36°16'02"E	21.13'
C41	326.00'	101.07'	17°45'50"	S50°13'34"W	100.67'
C42	408.14'	259.38'	36°24'45"	N59°33'02"E	255.04'
C43	326.00'	26.98'	4°44'32"	S59°01'06"W	26.98'
C44	326.00'	44.13'	7°45'21"	S52°46'09"W	44.10'
C45	326.00'	42.94'	7°32'50"	S45°07'04"W	42.91'
C46	408.14'	43.21'	6°03'57"	N44°23'57"E	43.19'
C47	408.14'	42.38'	5°56'57"	N50°24'24"E	42.36'
C48	408.14'	44.42'	6°14'11"	N56°29'59"E	44.40'
C49	408.14'	71.13'	9°59'09"	N64°36'39"E	71.04'
C50	25.00'	23.38'	53°35'12"	S32°05'22"W	22.54'

"ATTACHMENT 1"

PRESERVE AT MAYFIELD RANCH CONDOMINIUMS
 BEING 26.65 ACRES OF LAND OUT OF THE EPHRAIM EVANS
 SURVEY, ABSTRACT NUMBER 212 IN WILLIAMSON COUNTY,
 TEXAS AND BEING KNOWN AS LOT 14, BLOCK A,
 LOT 14 MAYFIELD RANCH ENCLAVE,
 A SUBDIVISION OF RECORD IN DOCUMENT NUMBER
 2012026769 OF THE OFFICIAL PUBLIC RECORDS OF
 WILLIAMSON COUNTY, TEXAS AS CONVEYED TO
 ALLEN GROUP II, LLC BY INSTRUMENT OF RECORD IN
 DOCUMENT NUMBER 2007016507 OF THE OFFICIAL PUBLIC
 RECORDS OF WILLIAMSON COUNTY, TEXAS

BASELINE LAND SURVEYORS, INC.
 PROFESSIONAL LAND SURVEYING SERVICES
 8333 CROSS PARK DRIVE
 AUSTIN, TEXAS 78757
 OFFICE: 512.374.9722 FAX: 512.873.9743
 ron-baseline@austin.rr.com

File: S:\[Southpark Condominiums]Dwg\Southpark Condominium Regime Base	
Job No.	Snapshot: 5y-Condo Regime
Scale (Hor.):	Scale (Vert.):
Date: 06/04/14	Checked By: JSL Drawn By: RLW

**SHEET
TABLE I**

TABLE I-CURVES

CURVE TABLE					
CURVE	RADIUS	LENGTH	DELTA	BEARING	CHORD
C51	408.14'	0.16'	0°01'19"	N41°21'19"E	0.16'
C52	85.00'	44.12'	29°44'21"	S62°08'17"W	43.63'
C53	111.00'	58.09'	29°59'09"	S62°15'41"W	57.43'
C54	55.89'	53.15'	54°29'15"	S20°01'29"W	51.17'
C55	81.89'	84.99'	59°27'41"	S17°32'16"W	81.22'
C56	25.00'	41.46'	95°01'50"	S54°44'04"E	36.87'
C57	25.00'	36.64'	83°58'03"	N35°46'23"E	33.45'
C58	25.00'	37.80'	86°37'12"	S64°26'30"E	34.30'
C59	25.00'	35.36'	81°02'06"	N19°23'09"E	32.48'
C60	328.84'	51.40'	8°57'20"	S55°25'32"W	51.35'
C61	25.00'	16.28'	37°18'57"	N69°36'21"E	16.00'
C62	126.00'	24.47'	11°07'38"	N26°41'43"W	24.43'
C63	100.00'	19.42'	11°07'38"	N26°41'43"W	19.39'
C64	125.00'	24.28'	11°07'38"	S26°41'43"E	24.24'
C65	100.00'	19.42'	11°07'38"	S26°41'43"E	19.39'
C66	25.00'	39.49'	90°30'09"	S57°29'40"E	35.51'
C67	25.00'	39.05'	89°29'51"	N32°30'20"E	35.20'
C68	500.00'	140.12'	16°03'23"	N20°16'17"W	139.66'
C69	526.00'	147.40'	16°03'23"	N20°16'17"W	146.92'
C70	88.00'	136.00'	88°32'44"	S15°58'23"W	122.86'
C71	62.00'	83.76'	77°24'05"	S10°24'04"W	77.53'
C72	2.50'	4.41'	101°08'39"	N80°19'34"W	3.86'
C73	91.00'	32.62'	20°32'17"	N66°59'07"E	32.45'
C74	408.14'	58.08'	8°09'11"	N73°40'49"E	58.03'
C75	85.00'	27.41'	18°28'26"	S56°30'20"W	27.29'
C76	85.00'	16.71'	11°15'55"	S71°22'30"W	16.69'
C77	1032.00'	34.38'	1°54'32"	N39°00'27"W	34.38'
C78	1032.00'	18.12'	1°00'22"	N37°33'00"W	18.12'
C79	100.00'	1.39'	0°47'44"	N21°31'46"W	1.39'
C81	100.00'	11.45'	6°33'46"	S24°24'47"E	11.45'
C82	100.00'	7.97'	4°33'52"	S29°58'36"E	7.96'
C83	100.00'	18.03'	10°19'54"	N27°05'36"W	18.01'
C84	328.84'	31.41'	5°28'25"	S74°59'06"W	31.40'
C85	81.89'	50.83'	35°33'47"	S05°35'19"W	50.02'
C86	25.00'	18.44'	42°15'36"	N14°55'09"E	18.02'
C87	25.00'	18.20'	41°42'27"	N56°54'11"E	17.80'
C88	81.89'	34.16'	23°53'54"	S35°19'10"W	33.91'
C89	111.00'	39.47'	20°22'25"	S57°27'19"W	39.26'
C90	733.03'	24.07'	1°52'53"	N13°25'14"W	24.07'
C91	111.00'	18.62'	9°36'44"	S72°26'54"W	18.60'
C92	530.97'	59.72'	6°26'38"	N18°30'15"W	59.69'
C93	500.00'	42.13'	4°49'42"	N24°15'31"W	42.12'
C94	500.00'	14.20'	1°37'37"	N27°29'10"W	14.20'
C95	88.00'	19.61'	12°45'55"	S21°55'01"E	19.57'
C96	88.00'	29.71'	19°20'37"	S05°51'45"E	29.57'
C97	88.00'	31.34'	20°24'10"	S14°00'39"W	31.17'
C98	88.00'	34.02'	22°08'58"	S35°17'13"W	33.81'
C99	88.00'	21.32'	13°53'03"	S53°18'14"W	21.27'
C100	526.00'	2.45'	0°16'02"	N28°09'58"W	2.45'

"ATTACHMENT 1"

**PRESERVE AT MAYFIELD RANCH CONDOMINIUMS
BEING 26.65 ACRES OF LAND OUT OF THE EPHRAIM EVANS
SURVEY, ABSTRACT NUMBER 212 IN WILLIAMSON COUNTY,
TEXAS AND BEING KNOWN AS LOT 14, BLOCK A,
LOT 14 MAYFIELD RANCH ENCLAVE,
A SUBDIVISION OF RECORD IN DOCUMENT NUMBER
2012026769 OF THE OFFICIAL PUBLIC RECORDS OF
WILLIAMSON COUNTY, TEXAS AS CONVEYED TO
ALLEN GROUP II, LLC BY INSTRUMENT OF RECORD IN
DOCUMENT NUMBER 2007016507 OF THE OFFICIAL PUBLIC
RECORDS OF WILLIAMSON COUNTY, TEXAS**

BASELINE LAND SURVEYORS, INC.
PROFESSIONAL LAND SURVEYING SERVICES
8333 CROSS PARK DRIVE
AUSTIN, TEXAS 78757
OFFICE: 512.374.9722 FAX: 512.873.9743
ron-baseline@austin.rr.com

File: S:\Southpark Condominiums\Draw\Southpark Condominium Regime Base	
Job No.	Snapshot: Sy-Condo Regime
Scale (Hor.):	Scale (Vert.):
Date: 06/04/14	Checked By: JSL
	Drawn By: RLW

**SHEET
TABLE I**

TABLE I-CURVES

CURVE TABLE					
CURVE	RADIUS	LENGTH	DELTA	BEARING	CHORD
C101	526.00'	37.83'	4°07'13"	N25°58'20"W	37.82'
C102	526.00'	39.46'	4°17'55"	N21°45'46"W	39.45'
C103	526.00'	41.22'	4°29'25"	N17°22'06"W	41.21'
C104	526.00'	26.44'	2°52'48"	N13°41'00"W	26.44'
C105	25.00'	6.56'	15°01'43"	S19°45'27"E	6.54'
C106	25.00'	32.93'	75°28'25"	S65°00'32"E	30.60'
C107	65.00'	1.90'	1°40'35"	S76°24'58"W	1.90'
C108	65.00'	78.56'	69°15'03"	N40°57'10"E	73.87'
C109	274.00'	35.65'	7°27'17"	N56°31'07"E	35.62'
C110	274.00'	18.50'	3°52'07"	N58°18'42"E	18.50'
C111	274.00'	17.15'	3°35'10"	N54°35'04"E	17.15'
C112	181.00'	66.02'	20°53'59"	S63°14'28"W	65.66'
C113	181.00'	33.85'	10°42'52"	S58°08'55"W	33.80'
C114	181.00'	32.18'	10°11'07"	S68°35'55"W	32.13'
C115	300.00'	24.23'	4°37'38"	N57°55'56"E	24.22'
C116	125.00'	43.11'	19°45'31"	N63°48'42"E	42.89'
C117	125.00'	26.30'	12°03'18"	N67°39'49"E	26.25'
C118	125.00'	16.81'	7°42'14"	N57°47'03"E	16.79'
C119	176.00'	37.53'	12°13'08"	S60°02'31"W	37.46'
C120	25.00'	14.20'	32°32'13"	S42°53'43"E	14.01'
C121	213.00'	11.63'	3°07'39"	S28°11'26"E	11.62'
C122	187.00'	8.87'	2°42'59"	S28°23'46"E	8.86'
C123	25.00'	15.90'	36°25'53"	S08°49'20"E	15.63'
C124	300.00'	42.53'	8°07'18"	N25°41'36"W	42.49'
C125	326.00'	46.75'	8°13'00"	N25°38'45"W	46.71'
C126	25.00'	11.83'	27°06'25"	N08°04'44"W	11.72'
C127	24.84'	17.09'	39°24'47"	S41°10'09"E	16.75'
C128	277.00'	46.31'	9°34'47"	S63°40'21"W	46.26'
C129	277.00'	18.64'	3°51'18"	S60°48'36"W	18.63'
C130	277.00'	27.68'	5°43'30"	S65°36'00"W	27.67'
C131	326.00'	33.21'	5°50'11"	N26°50'09"W	33.19'
C132	326.00'	13.54'	2°22'49"	N22°43'40"W	13.54'

"ATTACHMENT 1"

**PRESERVE AT MAYFIELD RANCH CONDOMINIUMS
BEING 26.65 ACRES OF LAND OUT OF THE EPHRAIM EVANS
SURVEY, ABSTRACT NUMBER 212 IN WILLIAMSON COUNTY,
TEXAS AND BEING KNOWN AS LOT 14, BLOCK A,
LOT 14 MAYFIELD RANCH ENCLAVE,
A SUBDIVISION OF RECORD IN DOCUMENT NUMBER
2012026789 OF THE OFFICIAL PUBLIC RECORDS OF
WILLIAMSON COUNTY, TEXAS AS CONVEYED TO
ALLEN GROUP II, LLC BY INSTRUMENT OF RECORD IN
DOCUMENT NUMBER 2007016507 OF THE OFFICIAL PUBLIC
RECORDS OF WILLIAMSON COUNTY, TEXAS**

BASELINE LAND SURVEYORS, INC.
PROFESSIONAL LAND SURVEYING SERVICES

8335 CROSS PARK DRIVE
AUSTIN, TEXAS 78757

OFFICE: 512.374.9722 FAX: 512.873.9743
ron-baseline@austln.r.com

File: S:\Southpark Condominiums\Draw\Southpark Condominium Regime Base	
Job No.	Snapshot: Sy-Condo Regime
Scale (Hor.):	Scale (Vert.):
Date: 06/04/14	Checked By: JSL Drawn By: RLW

SHEET
TABLE I

TABLE II-LINES

LINE TABLE		
LINE	BEARING	LENGTH
L1	N29°45'15"W	12.07'
L2	N29°45'15"W	6.93'
L3	S60°14'56"W	12.98'
L4	N06°19'38"E	9.05'
L5	N06°19'38"E	19.19'
L6	N60°14'45"E	4.61'
L7	N29°45'15"W	5.00'
L8	N60°14'45"E	4.20'
L9	N29°45'15"W	19.00'
L10	S86°22'52"W	10.17'
L11	N83°23'49"W	34.08'
L12	N68°08'07"W	7.71'
L13	S66°59'28"W	8.28'
L14	S86°06'28"W	5.49'
L15	N86°53'30"W	9.80'
L16	S84°38'36"W	8.02'
L17	S73°58'31"W	13.92'
L18	N12°14'36"W	9.07'
L19	N12°14'36"W	9.74'
L20	N68°52'06"E	26.00'
L21	N14°30'25"W	18.75'
L22	S32°15'32"E	8.02'
L23	S32°15'32"E	7.92'
L24	S29°45'15"E	17.88'
L25	N60°14'45"E	38.80'
L26	S29°45'15"E	5.00'
L27	N60°14'45"E	15.37'
L28	N45°33'36"W	4.27'
L29	N59°54'56"E	6.99'
L30	N39°42'47"E	12.34'
L31	S69°56'31"E	19.46'

"ATTACHMENT 1"

PRESERVE AT MAYFIELD RANCH CONDOMINIUMS BEING 26.85 ACRES OF LAND OUT OF THE EPHRAIM EVANS SURVEY, ABSTRACT NUMBER 212 IN WILLIAMSON COUNTY, TEXAS AND BEING KNOWN AS LOT 14, BLOCK A, LOT 14 MAYFIELD RANCH ENCLAVE, A SUBDIVISION OF RECORD IN DOCUMENT NUMBER 2012026769 OF THE OFFICIAL PUBLIC RECORDS OF WILLIAMSON COUNTY, TEXAS AS CONVEYED TO ALLEN GROUP II, LLC BY INSTRUMENT OF RECORD IN DOCUMENT NUMBER 2007016507 OF THE OFFICIAL PUBLIC RECORDS OF WILLIAMSON COUNTY, TEXAS

BASELINE LAND SURVEYORS, INC.
 PROFESSIONAL LAND SURVEYING SERVICES
 8333 CROSS PARK DRIVE
 AUSTIN, TEXAS 78757
 OFFICE: 512.374.9722 FAX: 512.873.9743
 ron-baseline@austin.rr.com

File: S:\Southpark Condominiums\Draw\Southpark Condominium Regime Base	
Job No.	Snapshot: Sy-Condo Regime
Scale (Hor.):	Scale (Vert.):
Date: 06/04/14	Checked By: JSL Drawn By: RLW

SHEET
TABLE II

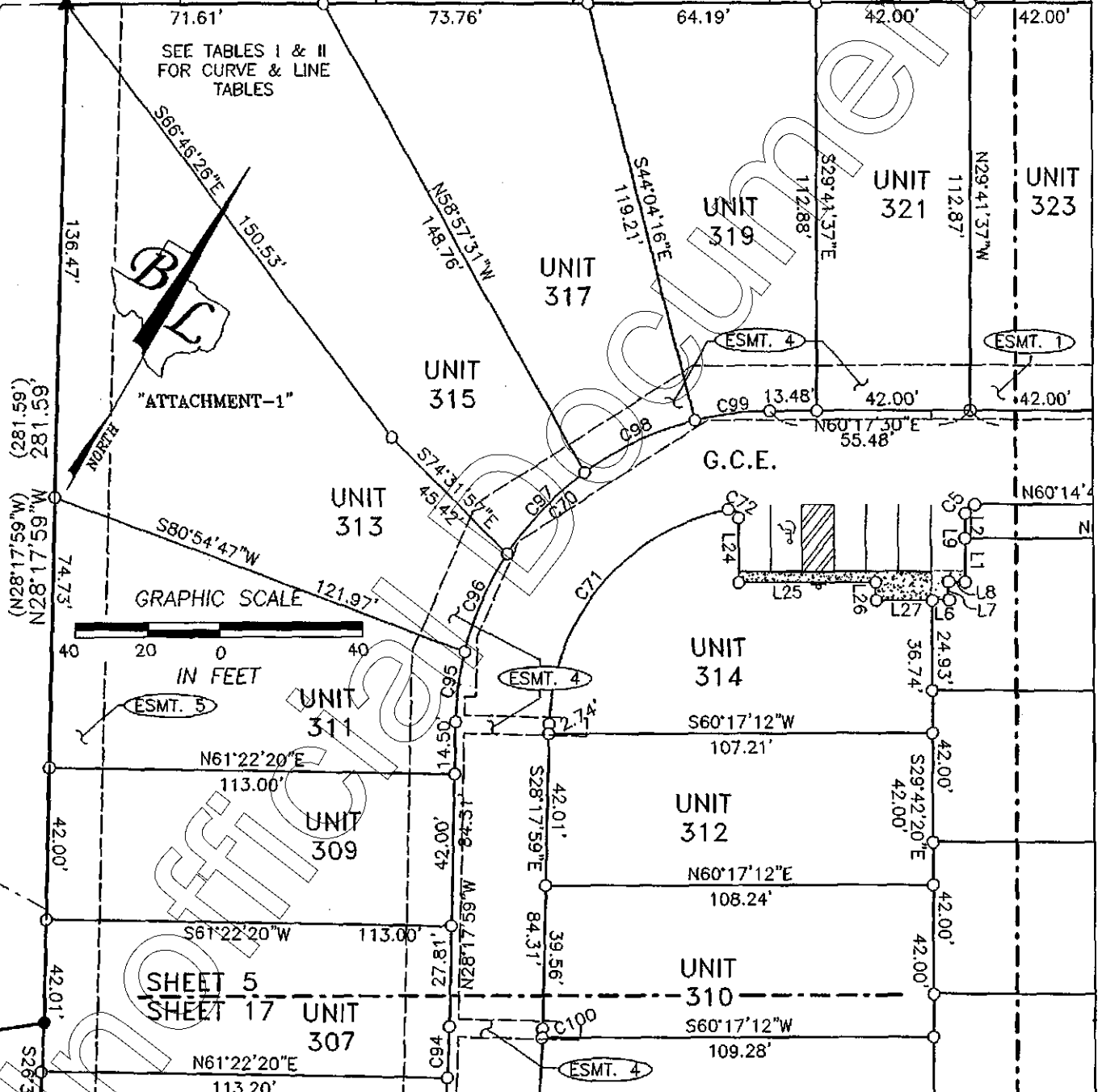
THE VILLAGE AT MAYFIELD RANCH
 PHASE FIVE
 CABINET CC, SLIDES 392-393
 P.R.W.C.T.
 DOC. NO. 2007008682
 O.P.R.W.C.T.

THE VILLAGE AT MAYFIELD RANCH
 PHASE THREE
 CABINET Z, SLIDE 283-285, P.R.W.C.T.
 DOC. NO. 2004096299, O.P.R.W.C.T.

SHEET 5
 SHEET 6

80 79 78 77 76 75

BLOCK A
 78 (N60°18'23"E) 1017.56'
 77 (1017.56') 1017.56'



PRESERVE AT MAYFIELD RANCH CONDOMINIUMS
 BEING 26.85 ACRES OF LAND OUT OF THE EPHRAIM EVANS
 SURVEY, ABSTRACT NUMBER 212 IN WILLIAMSON COUNTY,
 TEXAS AND BEING KNOWN AS LOT 14, BLOCK A,
 LOT 14 MAYFIELD RANCH ENCLAVE,
 A SUBDIVISION OF RECORD IN DOCUMENT NUMBER
 2012026769 OF THE OFFICIAL PUBLIC RECORDS OF
 WILLIAMSON COUNTY, TEXAS AS CONVEYED TO
 ALLEN GROUP II, LLC BY INSTRUMENT OF RECORD IN
 DOCUMENT NUMBER 2007016507 OF THE OFFICIAL PUBLIC
 RECORDS OF WILLIAMSON COUNTY, TEXAS

BASELINE LAND SURVEYORS, INC.
 PROFESSIONAL LAND SURVEYING SERVICES
 8335 CROSS PARK DRIVE
 AUSTIN, TEXAS 78757
 OFFICE: 512.374.9722 FAX: 512.873.9743
 ron-baseline@austin.rr.com

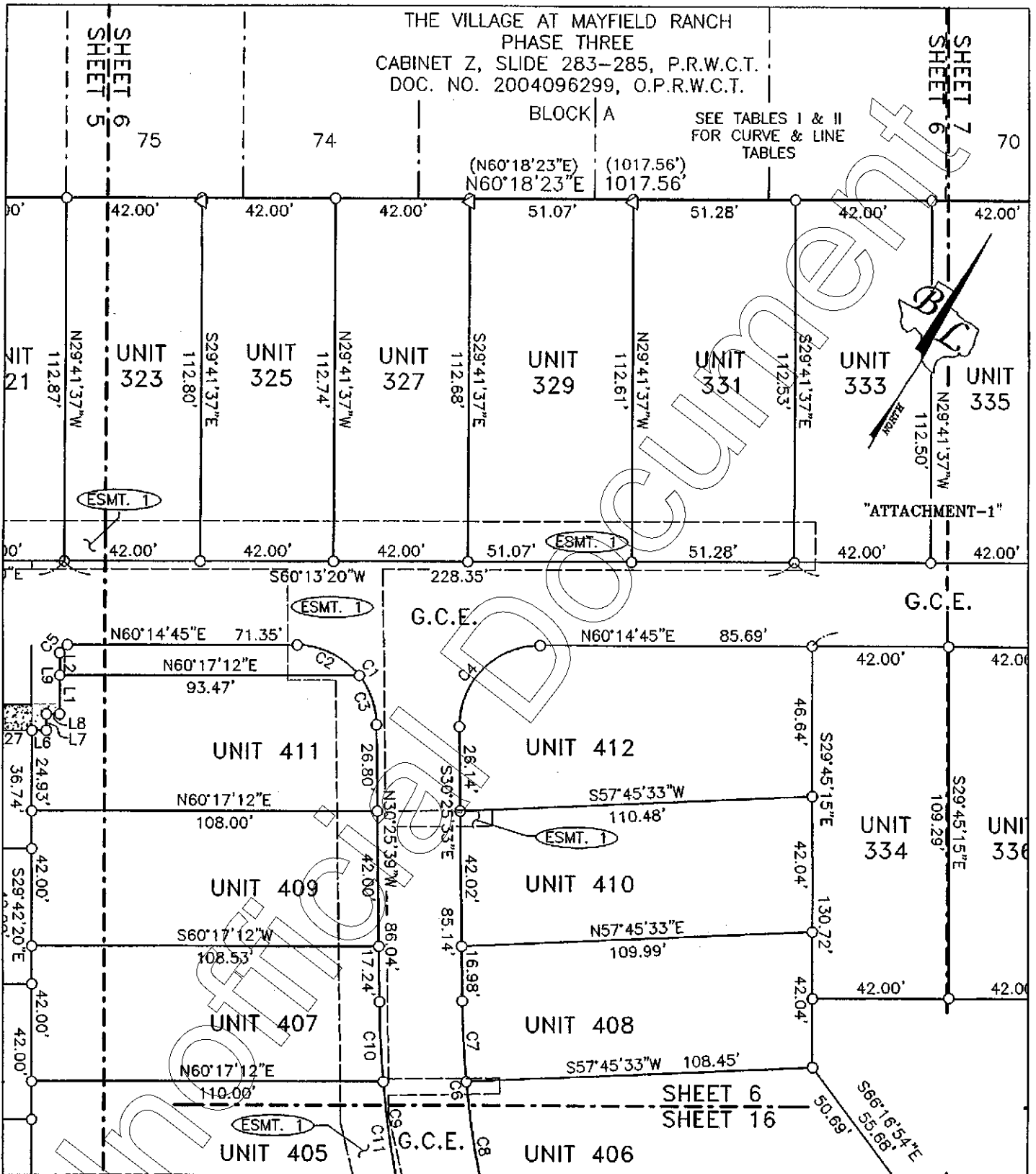
File: S:\Mayfield\Preserve at Mayfield Ranch\Draw\Preserve at Mayfield Ranch CONDO BASE	
Job No.	Snapshot: Sy-Condo Regime
Scale (Hor.): 1"=40'	Scale (Vert.):
Date: 06/04/14	Checked By: JSL Drawn By: RLW

SHEET
 5 of 26

THE VILLAGE AT MAYFIELD RANCH
 PHASE THREE
 CABINET Z, SLIDE 283-285, P.R.W.C.T.
 DOC. NO. 2004096299, O.P.R.W.C.T.

BLOCK A

SEE TABLES I & II
 FOR CURVE & LINE
 TABLES



PRESERVE AT MAYFIELD RANCH CONDOMINIUMS
 BEING 26.65 ACRES OF LAND OUT OF THE EPHRAIM EVANS
 SURVEY, ABSTRACT NUMBER 212 IN WILLIAMSON COUNTY,
 TEXAS AND BEING KNOWN AS LOT 14, BLOCK A,
 LOT 14 MAYFIELD RANCH ENCLAVE,
 A SUBDIVISION OF RECORD IN DOCUMENT NUMBER
 2012026769 OF THE OFFICIAL PUBLIC RECORDS OF
 WILLIAMSON COUNTY, TEXAS AS CONVEYED TO
 ALLEN GROUP II, LLC BY INSTRUMENT OF RECORD IN
 DOCUMENT NUMBER 2007016507 OF THE OFFICIAL PUBLIC
 RECORDS OF WILLIAMSON COUNTY, TEXAS

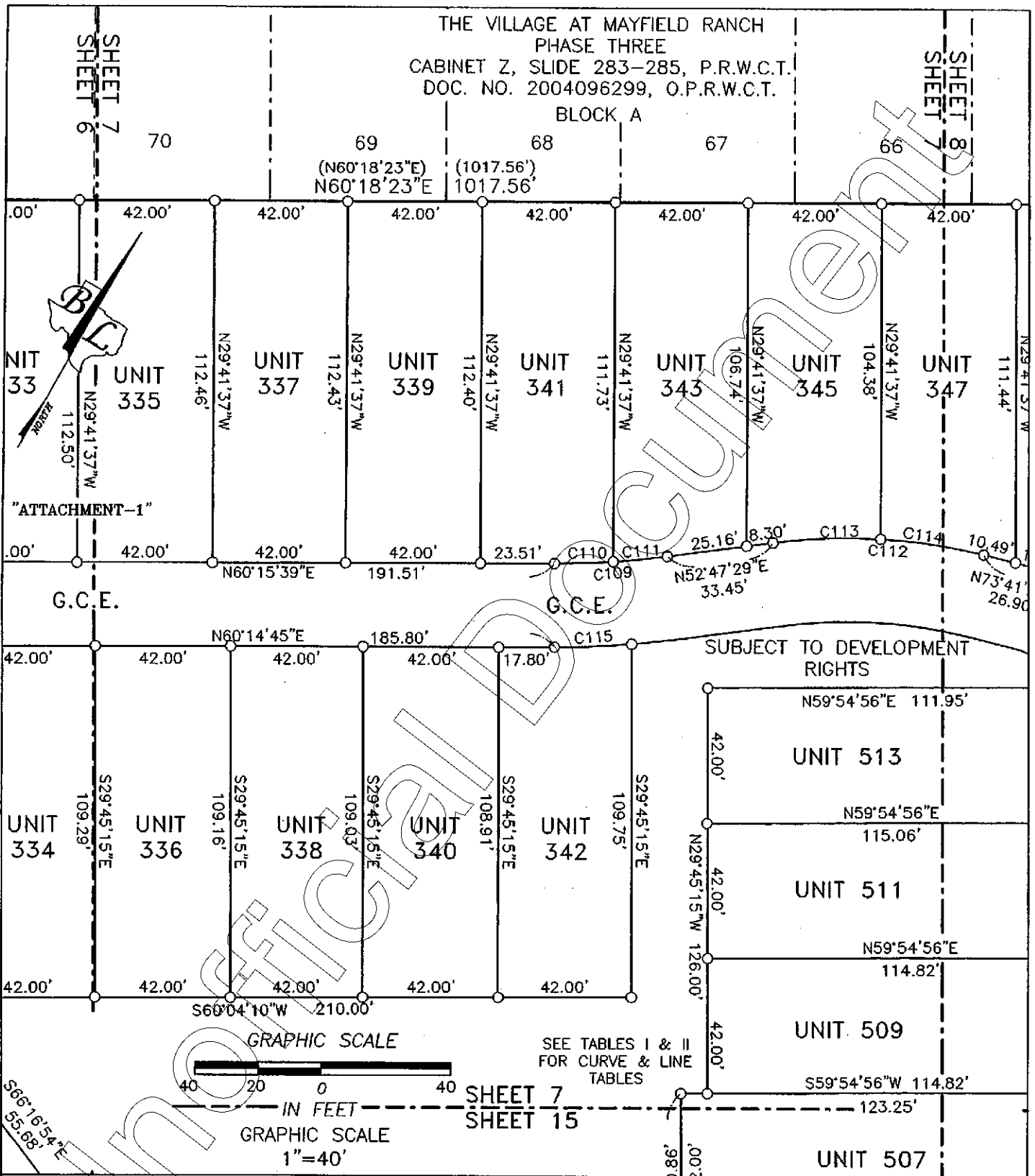
BASELINE LAND SURVEYORS, INC.
 PROFESSIONAL LAND SURVEYING SERVICES
 8333 CROSS PARK DRIVE
 AUSTIN, TEXAS 78757
 OFFICE: 512.374.9722 FAX: 512.873.9743
 ron-baseline@austin.rr.com

File: S:\Mayfield\Preserve at Mayfield Ranch\Draw\Preserve at Mayfield Ranch CONDO BASE	
Job No.	Snapshot: Sy-Condo Regime
Scale (Hor.): 1"=40'	Scale (Vert.):
Date: 06/04/14	Checked By: JSL
	Drawn By: RLW

SHEET
 6 of 26

THE VILLAGE AT MAYFIELD RANCH
 PHASE THREE
 CABINET Z, SLIDE 283-285, P.R.W.C.T.
 DOC. NO. 2004096299, O.P.R.W.C.T.

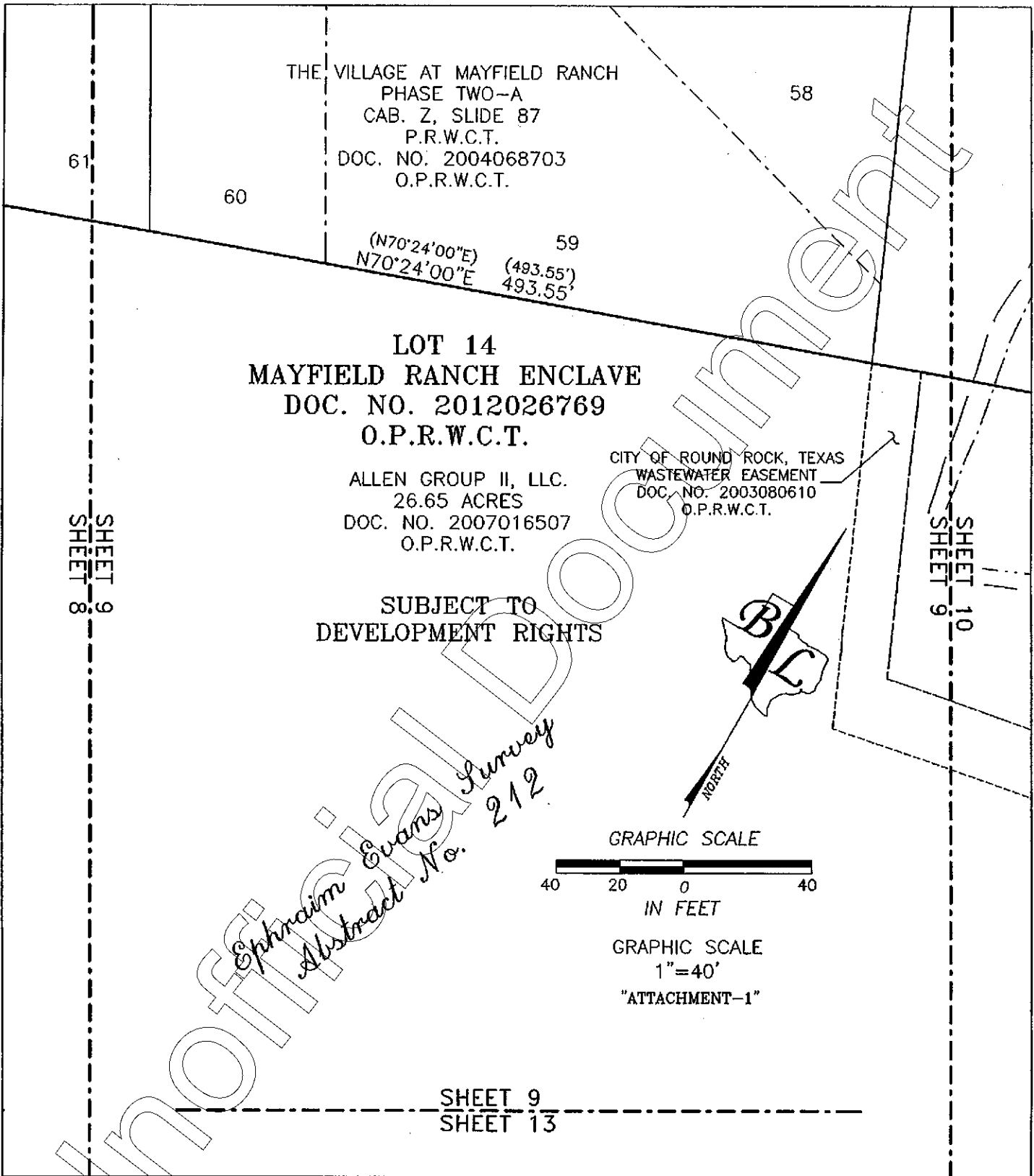
BLOCK A



PRESERVE AT MAYFIELD RANCH CONDOMINIUMS
 BEING 26.65 ACRES OF LAND OUT OF THE EPHRAIM EVANS
 SURVEY, ABSTRACT NUMBER 212 IN WILLIAMSON COUNTY,
 TEXAS AND BEING KNOWN AS LOT 14, BLOCK A,
 LOT 14 MAYFIELD RANCH ENCLAVE,
 A SUBDIVISION OF RECORD IN DOCUMENT NUMBER
 2012026769 OF THE OFFICIAL PUBLIC RECORDS OF
 WILLIAMSON COUNTY, TEXAS AS CONVEYED TO
 ALLEN GROUP II, LLC BY INSTRUMENT OF RECORD IN
 DOCUMENT NUMBER 2007016507 OF THE OFFICIAL PUBLIC
 RECORDS OF WILLIAMSON COUNTY, TEXAS

BASELINE LAND SURVEYORS, INC.
 PROFESSIONAL LAND SURVEYING SERVICES
 8333 CROSS PARK DRIVE
 AUSTIN, TEXAS 78757
 OFFICE: 512.374.9722 FAX: 512.873.9743
 ron-baseline@austin.tx.com

File: S:\Mayfield\Preserve at Mayfield Ranch\Draw\Preserve at Mayfield Ranch CONDO BASE	SHEET
Job No.	7 of 26
Scale (Hor.): 1"=40'	Scale (Vert.):
Date: 06/04/14	Checked By: JSL
	Drawn By: RLW



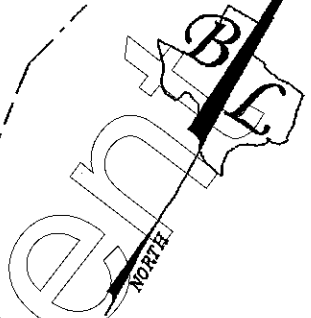
PRESERVE AT MAYFIELD RANCH CONDOMINIUMS
 BEING 26.65 ACRES OF LAND OUT OF THE EPHRAIM EVANS
 SURVEY, ABSTRACT NUMBER 212 IN WILLIAMSON COUNTY,
 TEXAS AND BEING KNOWN AS LOT 14, BLOCK A,
 LOT 14 MAYFIELD RANCH ENCLAVE,
 A SUBDIVISION OF RECORD IN DOCUMENT NUMBER
 2012026769 OF THE OFFICIAL PUBLIC RECORDS OF
 WILLIAMSON COUNTY, TEXAS AS CONVEYED TO
 ALLEN GROUP II, LLC BY INSTRUMENT OF RECORD IN
 DOCUMENT NUMBER 2007016507 OF THE OFFICIAL PUBLIC
 RECORDS OF WILLIAMSON COUNTY, TEXAS

BASELINE LAND SURVEYORS, INC.
 PROFESSIONAL LAND SURVEYING SERVICES
 8333 CROSS PARK DRIVE
 AUSTIN, TEXAS 78757
 OFFICE: 512.374.9722 FAX: 512.873.9743
 ron-baseline@ausfln.rr.com

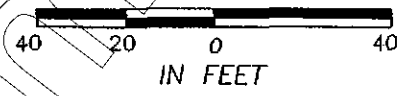
File: S:\11\Mayfield\Preserve at Mayfield Ranch\Draw\Preserve at Mayfield Ranch CONDO BASE	SHEET	
Job No.	Snapshot: 5y-Condo Regime	9 of 26
Scale (Hor.): 1"=40'	Scale (Vert.):	
Date: 06/04/14	Checked By: JSL	Drawn By: RLW

PRESERVE AT STONE OAK
PHASE ONE, SECTION TWO
CAB. R, SLIDE 325
P.R.W.C.T.

BLOCK A



GRAPHIC SCALE



GRAPHIC SCALE
1"=40'

61
(N70°24'00"E) (493.55')
N70°24'00"E 493.55'

ULTIMATE 1% ANNUAL CHANCE
FLOODPLAIN
ULTIMATE 4%
ANNUAL CHANCE
FLOODPLAIN

SHEET 9
SHEET 10

DRAINAGE &
STORM SEWER EASEMENT
HEREBY DEDICATED

S07°51'00"E
(S07°51'52"E) 61.03'
(61.03')

PRESERVE AT STONE OAK
PHASE ONE, SECTION TWO
DOC. NO. 199974769
O.P.R.W.C.T.
CAB. R, SLIDE 325
P.R.W.C.T.
BLOCK C

2

ULTIMATE 1% ANNUAL CHANCE
FLOODPLAIN

(S72°49'54"E) 304.48'
S72°52'12"E (304.53')

ULTIMATE 4%
ANNUAL CHANCE
FLOODPLAIN

CITY OF ROUND ROCK, TEXAS
WASTEWATER EASEMENT
DOC. NO. 2003080610
O.P.R.W.C.T.

(ESMT. 5)

SHEET 10
SHEET 12

PRESERVE AT MAYFIELD RANCH CONDOMINIUMS
BEING 26.65 ACRES OF LAND OUT OF THE EPHRAIM EVANS
SURVEY, ABSTRACT NUMBER 212 IN WILLIAMSON COUNTY,
TEXAS AND BEING KNOWN AS LOT 14, BLOCK A,
LOT 14 MAYFIELD RANCH ENCLAVE,
A SUBDIVISION OF RECORD IN DOCUMENT NUMBER
2012026769 OF THE OFFICIAL PUBLIC RECORDS OF
WILLIAMSON COUNTY, TEXAS AS CONVEYED TO
ALLEN GROUP II, LLC BY INSTRUMENT OF RECORD IN
DOCUMENT NUMBER 2007016507 OF THE OFFICIAL PUBLIC
RECORDS OF WILLIAMSON COUNTY, TEXAS

BASELINE LAND SURVEYORS, INC.
PROFESSIONAL LAND SURVEYING SERVICES
8333 CROSS PARK DRIVE
AUSTIN, TEXAS 78757
OFFICE: 512.374.9722 FAX: 512.873.9743
ron-baseline@austin.rr.com

File: S:\Mayfield\Preserve at Mayfield Ranch\Draw\Preserve at Mayfield Ranch CONDO BASE	
Job No.	Snapshot: Sy-Condo Regime
Scale (Hor.): 1"=40'	Scale (Vert.):
Date: 06/04/14	Checked By: JSL Drawn By: RLW

"ATTACHMENT-1"

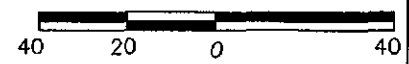
PRESERVE AT STONE OAK
PHASE ONE, SECTION TWO
DOC. NO. 199974769
O.P.R.W.C.T.
CAB. R, SLIDE 325
P.R.W.C.T.

OPEN SPACE/DRAINAGE EASEMENT/P.U.E.

ULTIMATE 1% ANNUAL CHANCE
FLOODPLAIN

ULTIMATE 4% ANNUAL CHANCE FLOODPLAIN

GRAPHIC SCALE



IN FEET

GRAPHIC SCALE

1"=40'

SHEET 11
SHEET 12

DRAINAGE &
STORM SEWER
EASEMENT
(PER PLAT)
DOC. NO.
2012026769
O.P.R.W.C.T.

ESMT. 5

(S25°31'55"E)
S25°32'07"E

(133.96')
133.95'

(S26°34'12"E)
S36°34'31"E

(191.41')
191.36'

STONE OAK AT ROUND ROCK
SECTION I AMENDED
CAB. M, SLIDE 354
P.R.W.C.T.

BLOCK G
LOT 26

GREENBELT
DRAINAGE & P.U.E.

STONE OAK AT ROUND ROCK
SECTION I AMENDED
CAB. M, SLIDE 354
P.R.W.C.T.

BLOCK G

22

23

SHEET 11
SHEET 26

PRESERVE AT MAYFIELD RANCH CONDOMINIUMS
BEING 28.85 ACRES OF LAND OUT OF THE EPHRAIM EVANS
SURVEY, ABSTRACT NUMBER 212 IN WILLIAMSON COUNTY,
TEXAS AND BEING KNOWN AS LOT 14, BLOCK A,
LOT 14 MAYFIELD RANCH ENCLAVE,
A SUBDIVISION OF RECORD IN DOCUMENT NUMBER
2012026769 OF THE OFFICIAL PUBLIC RECORDS OF
WILLIAMSON COUNTY, TEXAS AS CONVEYED TO
ALLEN GROUP II, LLC BY INSTRUMENT OF RECORD IN
DOCUMENT NUMBER 2007016507 OF THE OFFICIAL PUBLIC
RECORDS OF WILLIAMSON COUNTY, TEXAS

BASELINE LAND SURVEYORS, INC.
PROFESSIONAL LAND SURVEYING SERVICES
8333 CROSS PARK DRIVE
AUSTIN, TEXAS 78757
OFFICE: 512.374.9722 FAX: 512.873.9743
ron-baseline@austin.rr.com

File: S:\Mayfield\Preserve at Mayfield Ranch\Draw\Preserve at Mayfield Ranch CONDO BASE	
Job No.	Snapshot: Sy-Condo Regime
Scale (Hor.): 1"=40'	Scale (Vert.):
Date: 06/04/14	Checked By: JSL Drawn By: RLW

SHEET
11 of 26

SHEET 10
SHEET 12

ESMT. 5

LOT 14
MAYFIELD RANCH ENCLAVE
DOC. NO. 2012026769
O.P.R.W.C.T.

ALLEN GROUP II, LLC.
26.65 ACRES
DOC. NO. 2007016507
O.P.R.W.C.T.

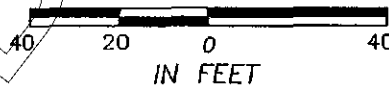
SUBJECT TO
DEVELOPMENT RIGHTS

SHEET 12
SHEET 13

SHEET 11
SHEET 12

*Ephraim Evans Survey
Abstract No. 212*

GRAPHIC SCALE

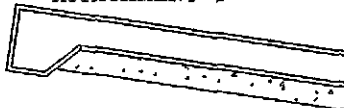


IN FEET

GRAPHIC SCALE

1"=40'

"ATTACHMENT-1"



ESMT. 5

ESMT. 5

SHEET 12
SHEET 25

ESMT. 5

PRESERVE AT MAYFIELD RANCH CONDOMINIUMS
BEING 26.65 ACRES OF LAND OUT OF THE EPHRAIM EVANS
SURVEY, ABSTRACT NUMBER 212 IN WILLIAMSON COUNTY,
TEXAS AND BEING KNOWN AS LOT 14, BLOCK A,
LOT 14 MAYFIELD RANCH ENCLAVE,
A SUBDIVISION OF RECORD IN DOCUMENT NUMBER
2012026769 OF THE OFFICIAL PUBLIC RECORDS OF
WILLIAMSON COUNTY, TEXAS AS CONVEYED TO
ALLEN GROUP II, LLC BY INSTRUMENT OF RECORD IN
DOCUMENT NUMBER 2007016507 OF THE OFFICIAL PUBLIC
RECORDS OF WILLIAMSON COUNTY, TEXAS

BASELINE LAND SURVEYORS, INC.
PROFESSIONAL LAND SURVEYING SERVICES
8333 CROSS PARK DRIVE
AUSTIN, TEXAS 78757
OFFICE: 512.374.9722 FAX: 512.873.9743
ron-baseline@austin.rr.com

File: S:\Mayfield\Preserve at Mayfield Ranch\Draw\Preserve at Mayfield Ranch CONDO BASE	
Job No.	Snapshot: Sy-Condo Regime
Scale (Hor.): 1"=40'	Scale (Vert.):
Date: 06/04/14	Checked By: JSL Drawn By: RLW

SHEET
12 of 26

SHEET 9
SHEET 13

LOT 14
MAYFIELD RANCH ENCLAVE
DOC. NO. 2012026769
O.P.R.W.C.T.

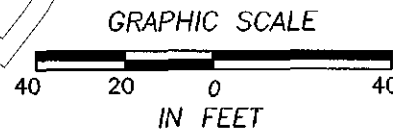
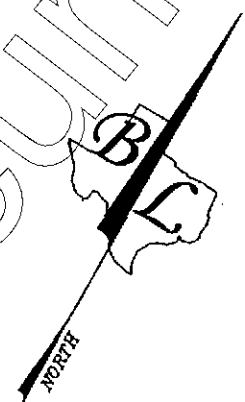
ALLEN GROUP II, LLC.
26.65 ACRES
DOC. NO. 2007016507
O.P.R.W.C.T.

SUBJECT TO
DEVELOPMENT RIGHTS

SHEET 13
SHEET 14

SHEET 12
SHEET 13

*Ephraim Evans Survey
Abstract No. 212*



GRAPHIC SCALE
1"=40'
"ATTACHMENT-1"

ESMT. 5

ESMT. 5

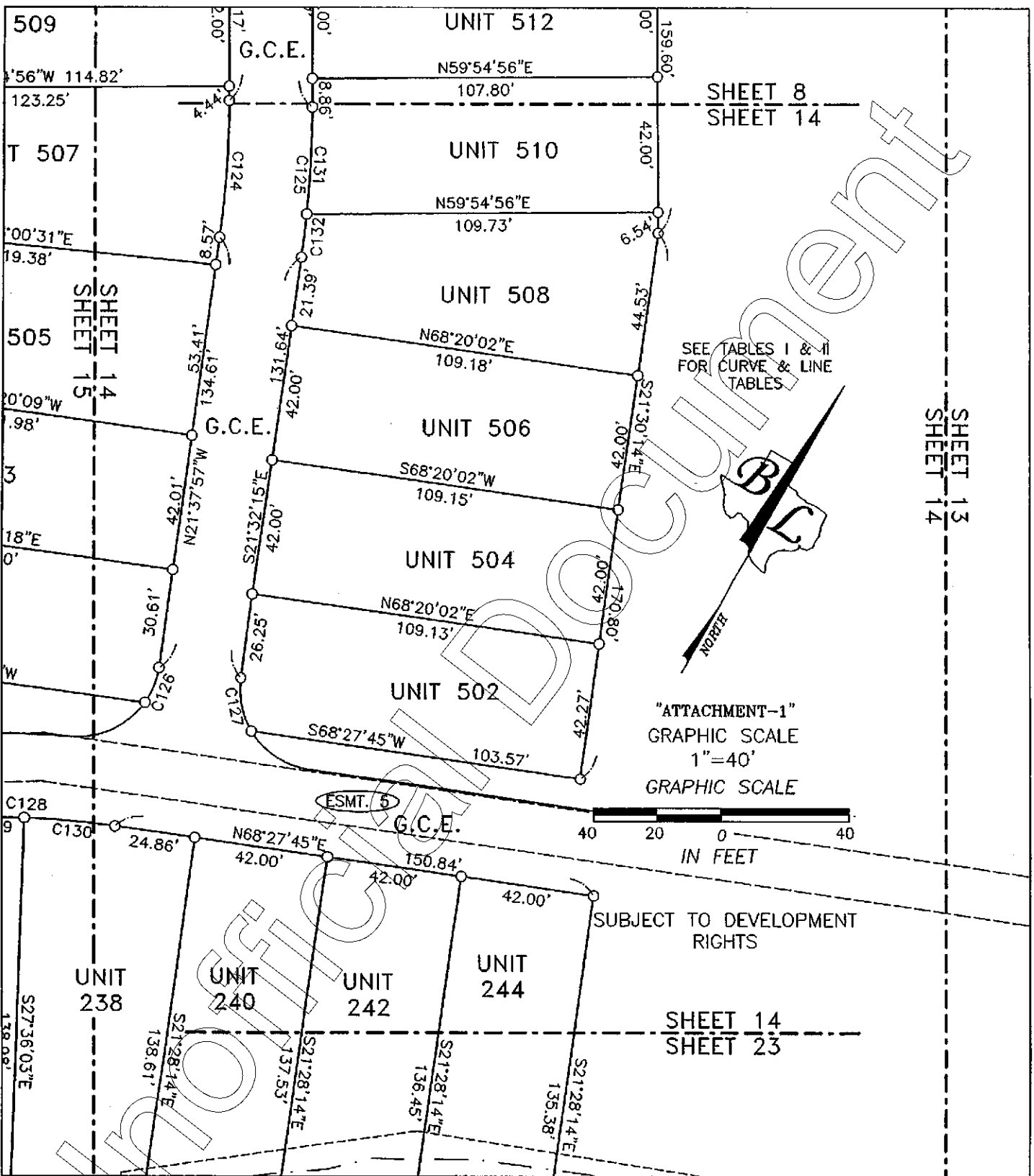
SHEET 13
SHEET 24

PRESERVE AT MAYFIELD RANCH CONDOMINIUMS
BEING 26.65 ACRES OF LAND OUT OF THE EPHRAIM EVANS
SURVEY, ABSTRACT NUMBER 212 IN WILLIAMSON COUNTY,
TEXAS AND BEING KNOWN AS LOT 14, BLOCK A,
LOT 14 MAYFIELD RANCH ENCLAVE,
A SUBDIVISION OF RECORD IN DOCUMENT NUMBER
2012026769 OF THE OFFICIAL PUBLIC RECORDS OF
WILLIAMSON COUNTY, TEXAS AS CONVEYED TO
ALLEN GROUP II, LLC BY INSTRUMENT OF RECORD IN
DOCUMENT NUMBER 2007016507 OF THE OFFICIAL PUBLIC
RECORDS OF WILLIAMSON COUNTY, TEXAS

BASELINE LAND SURVEYORS, INC.
PROFESSIONAL LAND SURVEYING SERVICES
8333 CROSS PARK DRIVE
AUSTIN, TEXAS 78757
OFFICE: 512.374.9722 FAX: 512.873.9743
ron-baseline@austin.rr.com

File: S:\Mayfield\Preserve at Mayfield Ranch\Draw\Preserve at Mayfield Ranch CONDO BASE	
Job No.	Snapshot: Sy-Condo Regime
Scale (Hor.): 1"=40'	Scale (Vert.):
Date: 06/04/14	Checked By: JSL Drawn By: RLW

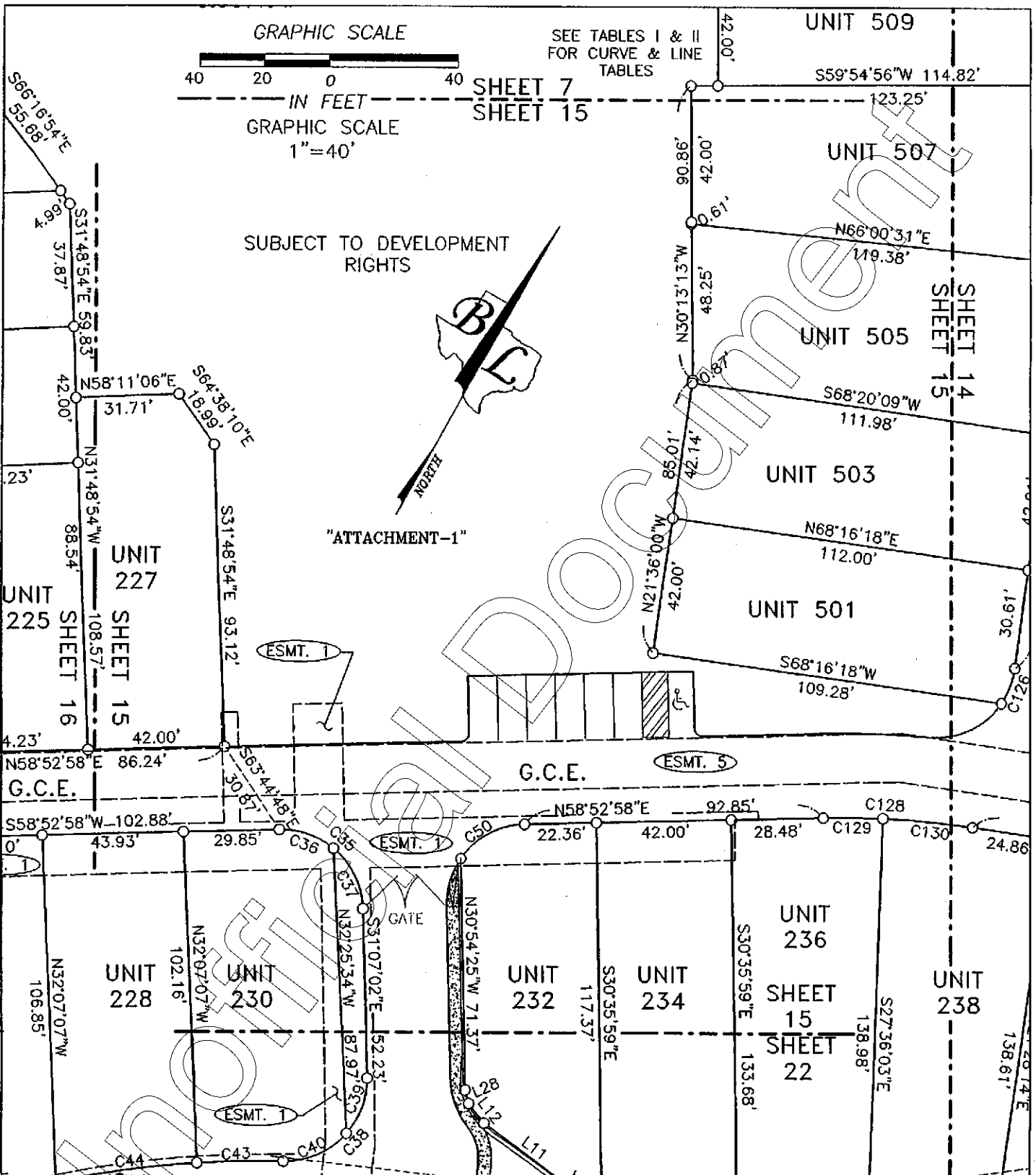
SHEET
13 of 26



PRESERVE AT MAYFIELD RANCH CONDOMINIUMS
 BEING 28.65 ACRES OF LAND OUT OF THE EPHRAIM EVANS
 SURVEY, ABSTRACT NUMBER 212 IN WILLIAMSON COUNTY,
 TEXAS AND BEING KNOWN AS LOT 14, BLOCK A,
 LOT 14 MAYFIELD RANCH ENCLAVE,
 A SUBDIVISION OF RECORD IN DOCUMENT NUMBER
 2012026769 OF THE OFFICIAL PUBLIC RECORDS OF
 WILLIAMSON COUNTY, TEXAS AS CONVEYED TO
 ALLEN GROUP II, LLC BY INSTRUMENT OF RECORD IN
 DOCUMENT NUMBER 2007016507 OF THE OFFICIAL PUBLIC
 RECORDS OF WILLIAMSON COUNTY, TEXAS

BASELINE LAND SURVEYORS, INC.
 PROFESSIONAL LAND SURVEYING SERVICES
 8333 CROSS PARK DRIVE
 AUSTIN, TEXAS 78757
 OFFICE: 512.374.9722 FAX: 512.873.9743
 ron-baseline@austlin.rr.com

File: S:\Mayfield\Preserve at Mayfield Ranch\Drawg\Preserve at Mayfield Ranch CONDO BASE	
Job No.	Snapshot: Sy-Condo Regime
Scale (Hor.): 1"=40'	Scale (Vert.):
Date: 06/04/14	Checked By: JSL
	Drawn By: RLW

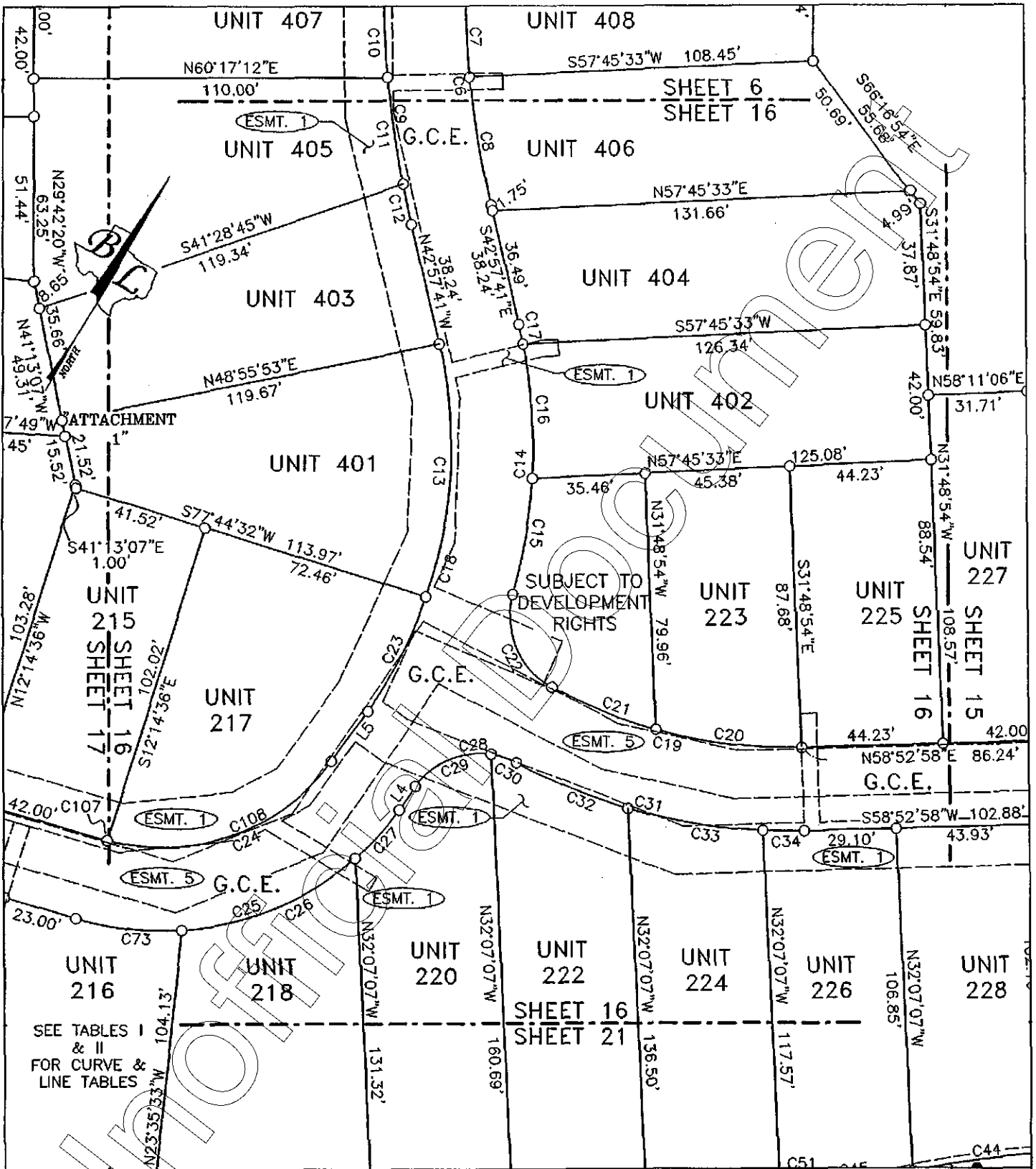


PRESERVE AT MAYFIELD RANCH CONDOMINIUMS
 BEING 26.65 ACRES OF LAND OUT OF THE EPHRAIM EVANS
 SURVEY, ABSTRACT NUMBER 212 IN WILLIAMSON COUNTY,
 TEXAS AND BEING KNOWN AS LOT 14, BLOCK A,
 LOT 14 MAYFIELD RANCH ENCLAVE,
 A SUBDIVISION OF RECORD IN DOCUMENT NUMBER
 2012026769 OF THE OFFICIAL PUBLIC RECORDS OF
 WILLIAMSON COUNTY, TEXAS AS CONVEYED TO
 ALLEN GROUP II, LLC BY INSTRUMENT OF RECORD IN
 DOCUMENT NUMBER 2007016507 OF THE OFFICIAL PUBLIC
 RECORDS OF WILLIAMSON COUNTY, TEXAS

BASELINE LAND SURVEYORS, INC.
 PROFESSIONAL LAND SURVEYING SERVICES
 8533 CROSS PARK DRIVE
 AUSTIN, TEXAS 78757
 OFFICE: 512.374.9722 FAX: 512.873.9743
 ron-baseline@austin.rr.com

File: S:\Mayfield\Preserve at Mayfield Ranch\Draw\Preserve at Mayfield Ranch CONDO BASE	
Job No.	Snapshot: Sy-Condo Regime
Scale (Hor.): 1"=40'	Scale (Vert.):
Date: 06/04/14	Checked By: JSL Drawn By: RLW

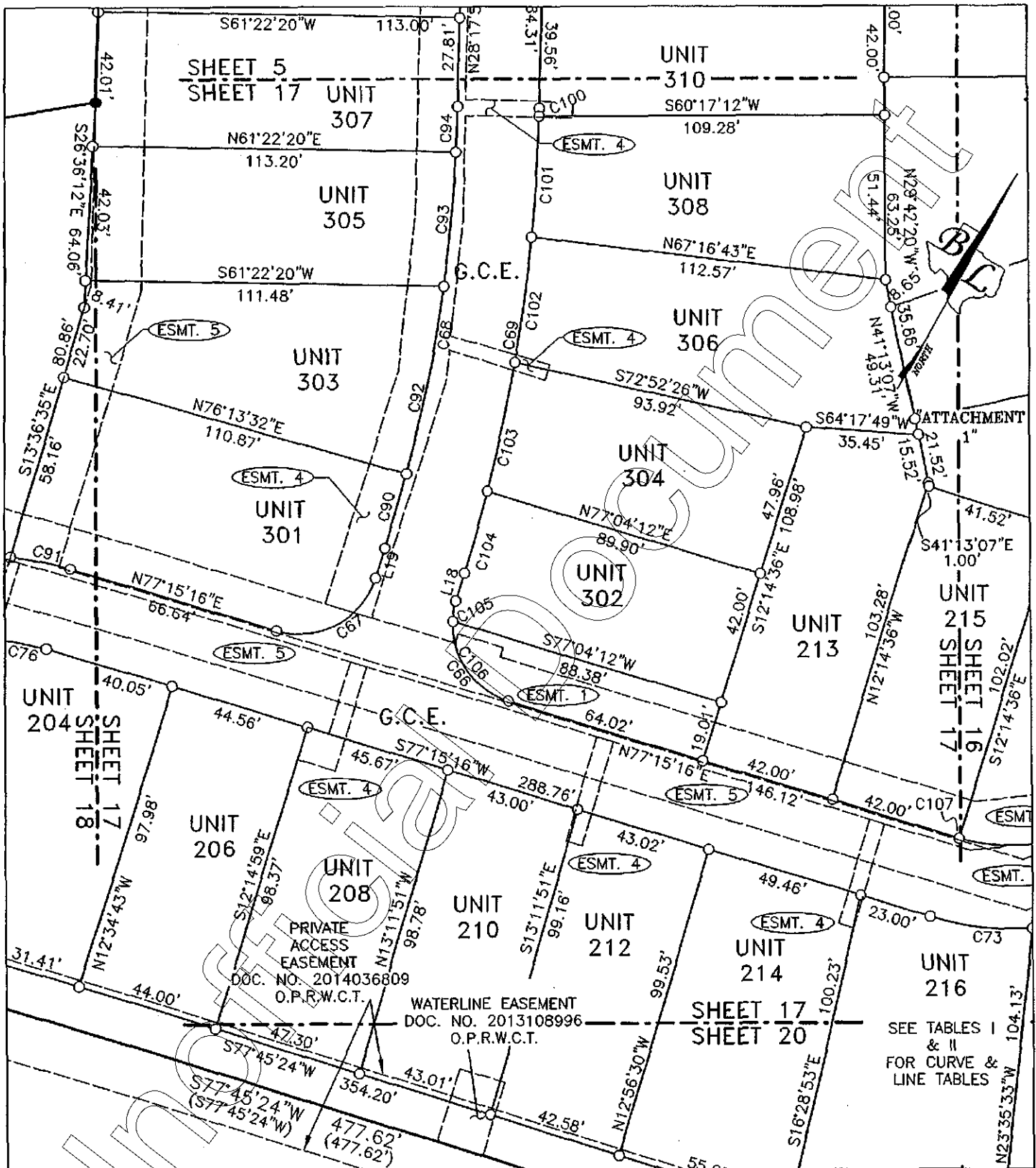
SHEET
15 of 26



PRESERVE AT MAYFIELD RANCH CONDOMINIUMS
 BEING 26.65 ACRES OF LAND OUT OF THE EPHRAIM EVANS
 SURVEY, ABSTRACT NUMBER 212 IN WILLIAMSON COUNTY,
 TEXAS AND BEING KNOWN AS LOT 14, BLOCK A,
 LOT 14 MAYFIELD RANCH ENCLAVE,
 A SUBDIVISION OF RECORD IN DOCUMENT NUMBER
 2012026769 OF THE OFFICIAL PUBLIC RECORDS OF
 WILLIAMSON COUNTY, TEXAS AS CONVEYED TO
 ALLEN GROUP II, LLC BY INSTRUMENT OF RECORD IN
 DOCUMENT NUMBER 2007016507 OF THE OFFICIAL PUBLIC
 RECORDS OF WILLIAMSON COUNTY, TEXAS

BASELINE LAND SURVEYORS, INC.
 PROFESSIONAL LAND SURVEYING SERVICES
 8333 CROSS PARK DRIVE
 AUSTIN, TEXAS 78757
 OFFICE: 512.374.9722 FAX: 512.873.9743
 ron-baseline@austin.rr.com

File: S:\Mayfield\Preserve at Mayfield Ranch\Draw\Preserve at Mayfield Ranch CONDO BASE	
Job No.	Snapshot: Sy-Condo Regime
Scale (Hor.): 1"=40'	Scale (Vert.):
Date: 06/04/14	Checked By: JSL
	Drawn By: RLW

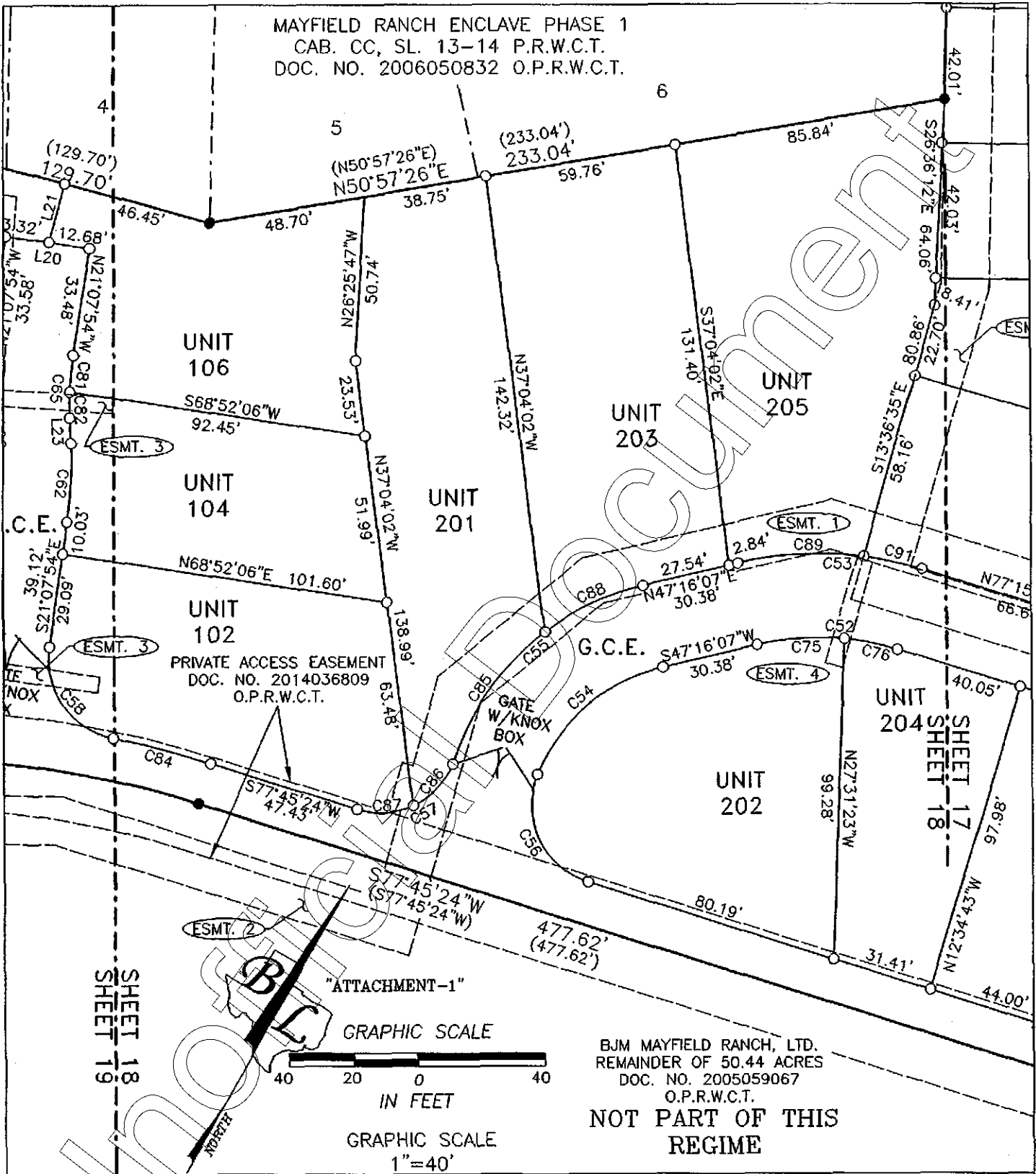


PRESERVE AT MAYFIELD RANCH CONDOMINIUMS
 BEING 28.65 ACRES OF LAND OUT OF THE EPHRAIM EVANS
 SURVEY, ABSTRACT NUMBER 212 IN WILLIAMSON COUNTY,
 TEXAS AND BEING KNOWN AS LOT 14, BLOCK A,
 LOT 14 MAYFIELD RANCH ENCLAVE,
 A SUBDIVISION OF RECORD IN DOCUMENT NUMBER
 2012026769 OF THE OFFICIAL PUBLIC RECORDS OF
 WILLIAMSON COUNTY, TEXAS AS CONVEYED TO
 ALLEN GROUP II, LLC BY INSTRUMENT OF RECORD IN
 DOCUMENT NUMBER 2007016507 OF THE OFFICIAL PUBLIC
 RECORDS OF WILLIAMSON COUNTY, TEXAS

BASELINE LAND SURVEYORS, INC.
 PROFESSIONAL LAND SURVEYING SERVICES
 8333 CROSS PARK DRIVE
 AUSTIN, TEXAS 78757
 OFFICE: 512.374.9722 FAX: 512.873.9743
 ron-baseline@austin.rr.com

File: S:\(Mayfield)Preserve at Mayfield Ranch\Draw\Preserve at Mayfield Ranch CONDO BASE		SHEET 17 of 26
Job No.	Snapshot: Sy-Condo Regime	
Scale (Hor.): 1"=40'	Scale (Vert.):	
Date: 06/04/14	Checked By: JSL	Drawn By: RLW

MAYFIELD RANCH ENCLAVE PHASE 1
 CAB. CC, SL. 13-14 P.R.W.C.T.
 DOC. NO. 2006050832 O.P.R.W.C.T.



BJM MAYFIELD RANCH, LTD.
 REMAINDER OF 50.44 ACRES
 DOC. NO. 2005059067
 O.P.R.W.C.T.
NOT PART OF THIS REGIME

PRESERVE AT MAYFIELD RANCH CONDOMINIUMS
 BEING 26.65 ACRES OF LAND OUT OF THE EPHRAIM EVANS SURVEY, ABSTRACT NUMBER 212 IN WILLIAMSON COUNTY, TEXAS AND BEING KNOWN AS LOT 14, BLOCK A, LOT 14 MAYFIELD RANCH ENCLAVE, A SUBDIVISION OF RECORD IN DOCUMENT NUMBER 2012026769 OF THE OFFICIAL PUBLIC RECORDS OF WILLIAMSON COUNTY, TEXAS AS CONVEYED TO ALLEN GROUP II, LLC BY INSTRUMENT OF RECORD IN DOCUMENT NUMBER 2007016507 OF THE OFFICIAL PUBLIC RECORDS OF WILLIAMSON COUNTY, TEXAS

BASELINE LAND SURVEYORS, INC.
 PROFESSIONAL LAND SURVEYING SERVICES
 8333 CROSS PARK DRIVE
 AUSTIN, TEXAS 78757
 OFFICE: 512.374.9722 FAX: 512.873.9743
 ron-baseline@austin.rr.com

File: S:\Mayfield\Preserve at Mayfield Ranch\Draw\Preserve at Mayfield Ranch CONDO BASE	
Job No.	Snapshot: Sy-Condo Regime
Scale (Hor.): 1"=40'	Scale (Vert.):
Date: 06/04/14	Checked By: JSL Drawn By: RLW

MAYFIELD RANCH ENCLAVE PHASE 1
 CAB. CC, SL. 13-14 P.R.W.C.T.
 DOC. NO. 2006050832 O.P.R.W.C.T.

MAYFIELD RANCH BOULEVARD
 (64.00' R.O.W.)

CITY OF ROUND ROCK, TEXAS
 SIDEWALK EASEMENT
 DOC. NO. 2003022821
 O.P.R.W.C.T.

UNIT 101
 PRIVATE ACCESS EASEMENT
 DOC. NO. 2014036809
 O.P.R.W.C.T.

BJM MAYFIELD RANCH, LTD.
 REMAINDER OF 50.44 ACRES
 DOC. NO. 2005059067
 O.P.R.W.C.T.

NOT PART OF THIS
 REGIME

*Ephraim Evans Survey
 Abstract No. 212*

SEE TABLES I & II
 FOR CURVE & LINE
 TABLES

GRAPHIC SCALE



GRAPHIC SCALE

1"=40'

"ATTACHMENT-1"

PRESERVE AT MAYFIELD RANCH CONDOMINIUMS
 BEING 26.65 ACRES OF LAND OUT OF THE EPHRAIM EVANS
 SURVEY, ABSTRACT NUMBER 212 IN WILLIAMSON COUNTY,
 TEXAS AND BEING KNOWN AS LOT 14, BLOCK A,
 LOT 14 MAYFIELD RANCH ENCLAVE,
 A SUBDIVISION OF RECORD IN DOCUMENT NUMBER
 2012026769 OF THE OFFICIAL PUBLIC RECORDS OF
 WILLIAMSON COUNTY, TEXAS AS CONVEYED TO
 ALLEN GROUP II, LLC BY INSTRUMENT OF RECORD IN
 DOCUMENT NUMBER 2007016507 OF THE OFFICIAL PUBLIC
 RECORDS OF WILLIAMSON COUNTY, TEXAS

BASELINE LAND SURVEYORS, INC.

PROFESSIONAL LAND SURVEYING SERVICES

8333 CROSS PARK DRIVE

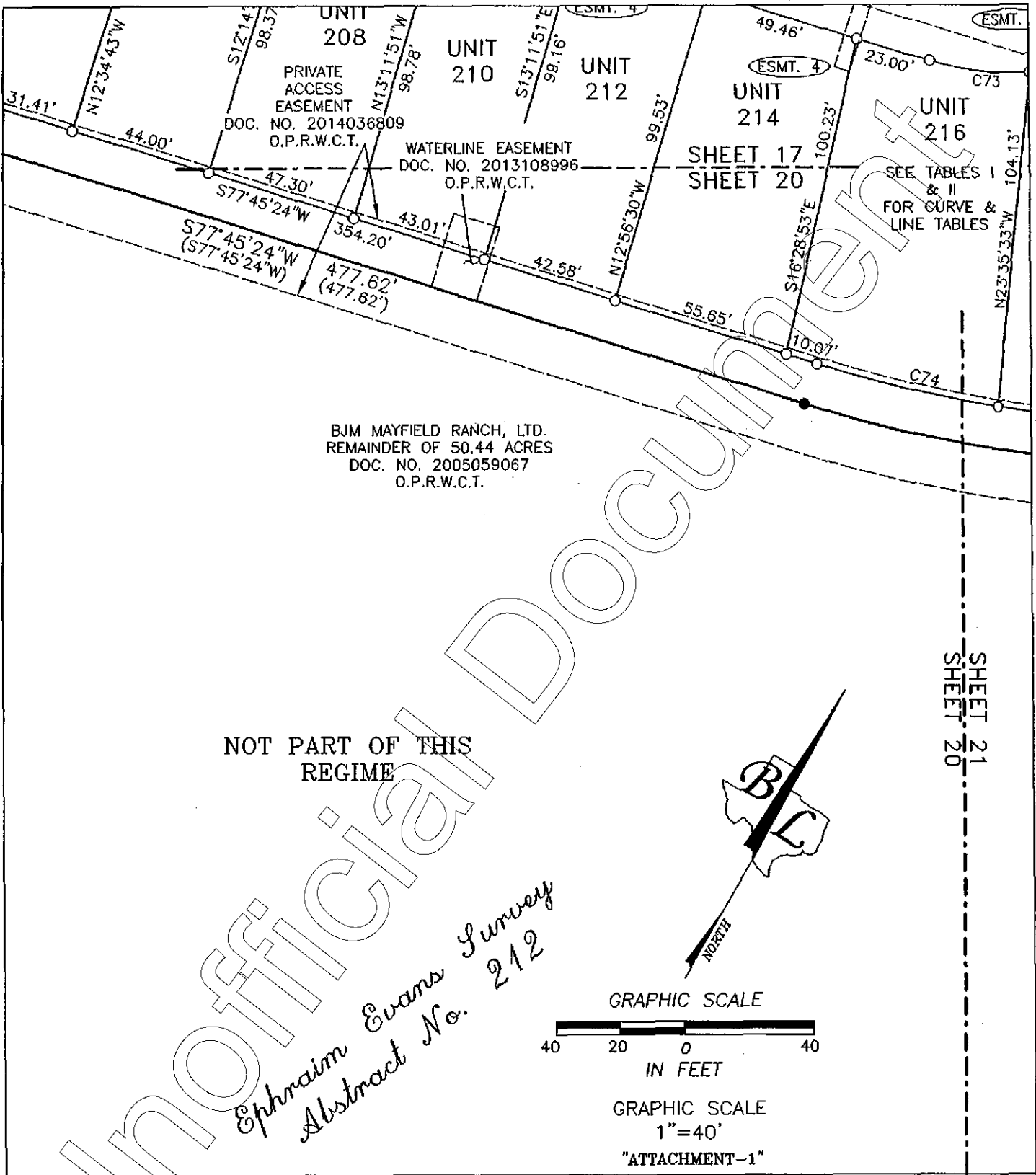
AUSTIN, TEXAS 78757

OFFICE: 512.374.9722 FAX: 512.873.9743

ron-baseline@austin.tx.com

File: S:\Mayfield\Preserve at Mayfield Ranch\Draw\Preserve at Mayfield Ranch CONDO BASE	
Job No.	Snapshot: Sy-Condo Regime
Scale (Hor.): 1"=40'	Scale (Vert.):
Date: 06/04/14	Checked By: JSL
	Drawn By: RLW

SHEET
 19 of 26

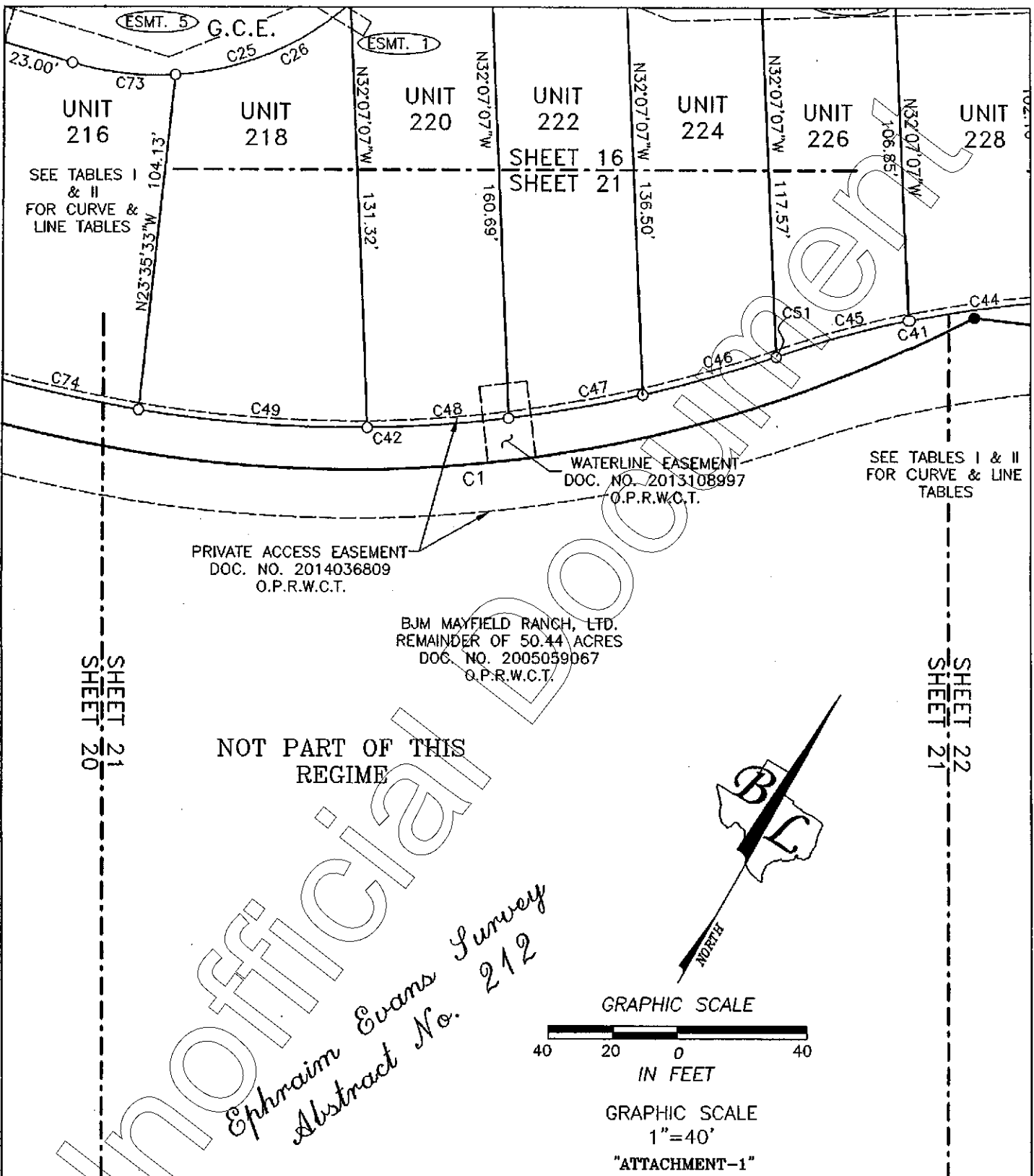


PRESERVE AT MAYFIELD RANCH CONDOMINIUMS BEING 26.65 ACRES OF LAND OUT OF THE EPHRAIM EVANS SURVEY, ABSTRACT NUMBER 212 IN WILLIAMSON COUNTY, TEXAS AND BEING KNOWN AS LOT 14, BLOCK A, LOT 14 MAYFIELD RANCH ENCLAVE, A SUBDIVISION OF RECORD IN DOCUMENT NUMBER 2012026769 OF THE OFFICIAL PUBLIC RECORDS OF WILLIAMSON COUNTY, TEXAS AS CONVEYED TO ALLEN GROUP II, LLC BY INSTRUMENT OF RECORD IN DOCUMENT NUMBER 2007016507 OF THE OFFICIAL PUBLIC RECORDS OF WILLIAMSON COUNTY, TEXAS

BASELINE LAND SURVEYORS, INC.
PROFESSIONAL LAND SURVEYING SERVICES
8333 CROSS PARK DRIVE
AUSTIN, TEXAS 78757
OFFICE: 512.374.9722 FAX: 512.873.9743
ron-baseline@austin.rr.com

File: S:\Mayfield\Preserve at Mayfield Ranch\Draw\Preserve at Mayfield Ranch CONDO BASE	
Job No.	Snapshot: Sy-Condo Regime
Scale (Hor.): 1"=40'	Scale (Vert.):
Date: 06/04/14	Checked By: JSL Drawn By: RLW

SHEET
20 of 26

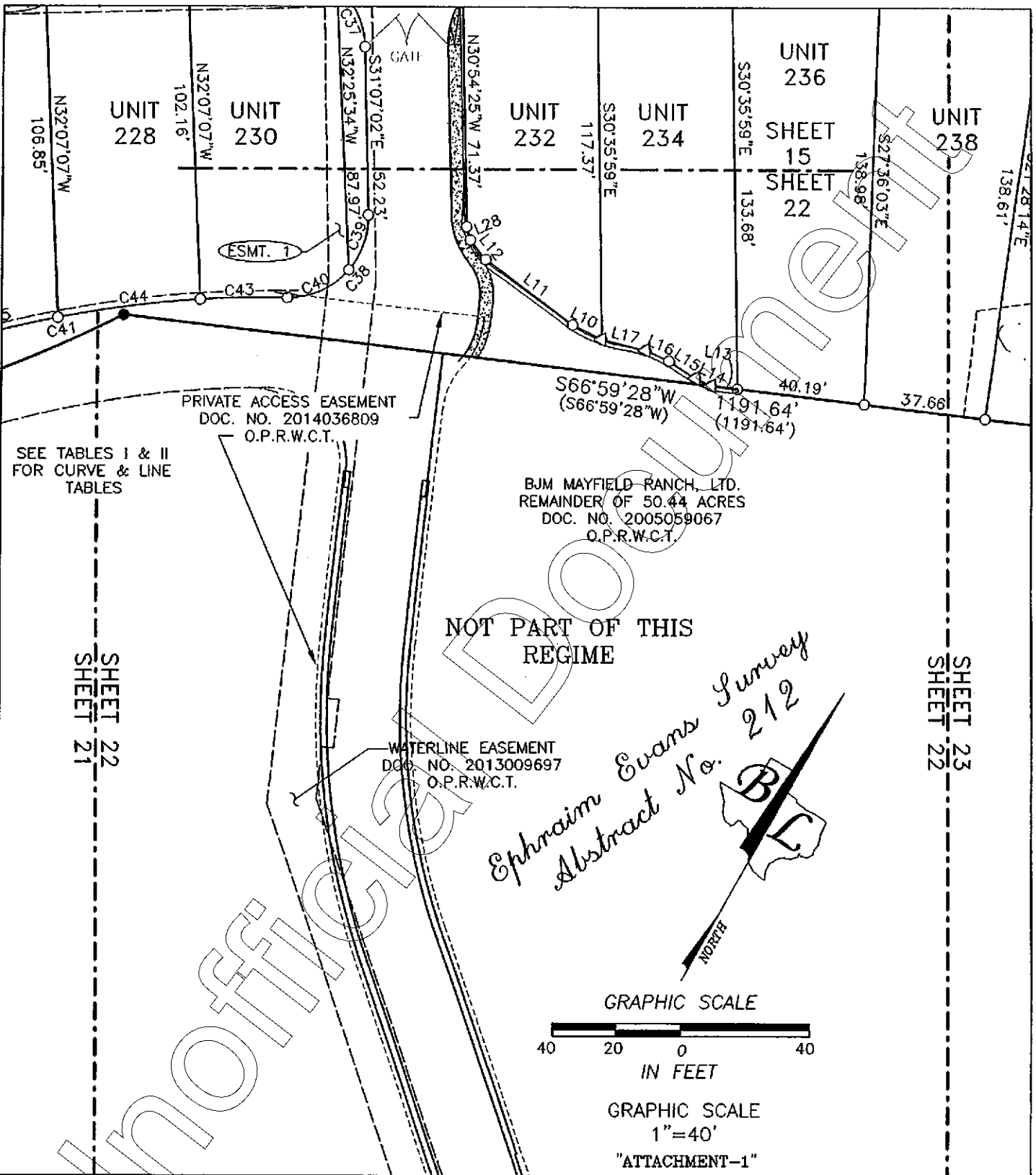


PRESERVE AT MAYFIELD RANCH CONDOMINIUMS BEING 26.65 ACRES OF LAND OUT OF THE EPHRAIM EVANS SURVEY, ABSTRACT NUMBER 212 IN WILLIAMSON COUNTY, TEXAS AND BEING KNOWN AS LOT 14, BLOCK A, LOT 14 MAYFIELD RANCH ENCLAVE, A SUBDIVISION OF RECORD IN DOCUMENT NUMBER 2012026769 OF THE OFFICIAL PUBLIC RECORDS OF WILLIAMSON COUNTY, TEXAS AS CONVEYED TO ALLEN GROUP II, LLC BY INSTRUMENT OF RECORD IN DOCUMENT NUMBER 2007016507 OF THE OFFICIAL PUBLIC RECORDS OF WILLIAMSON COUNTY, TEXAS

BASELINE LAND SURVEYORS, INC.
PROFESSIONAL LAND SURVEYING SERVICES
8333 CROSS PARK DRIVE
AUSTIN, TEXAS 78757
OFFICE: 512.374.9722 FAX: 512.875.9743
ron-baseline@austin.rr.com

File: S:\Mayfield\Preserve at Mayfield Ranch\Draw\Preserve at Mayfield Ranch CONDO BASE	
Job No.	Snapshot: Sy-Condo Regime
Scale (Hor.): 1"=40'	Scale (Vert.):
Date: 06/04/14	Checked By: JSL Drawn By: RLW

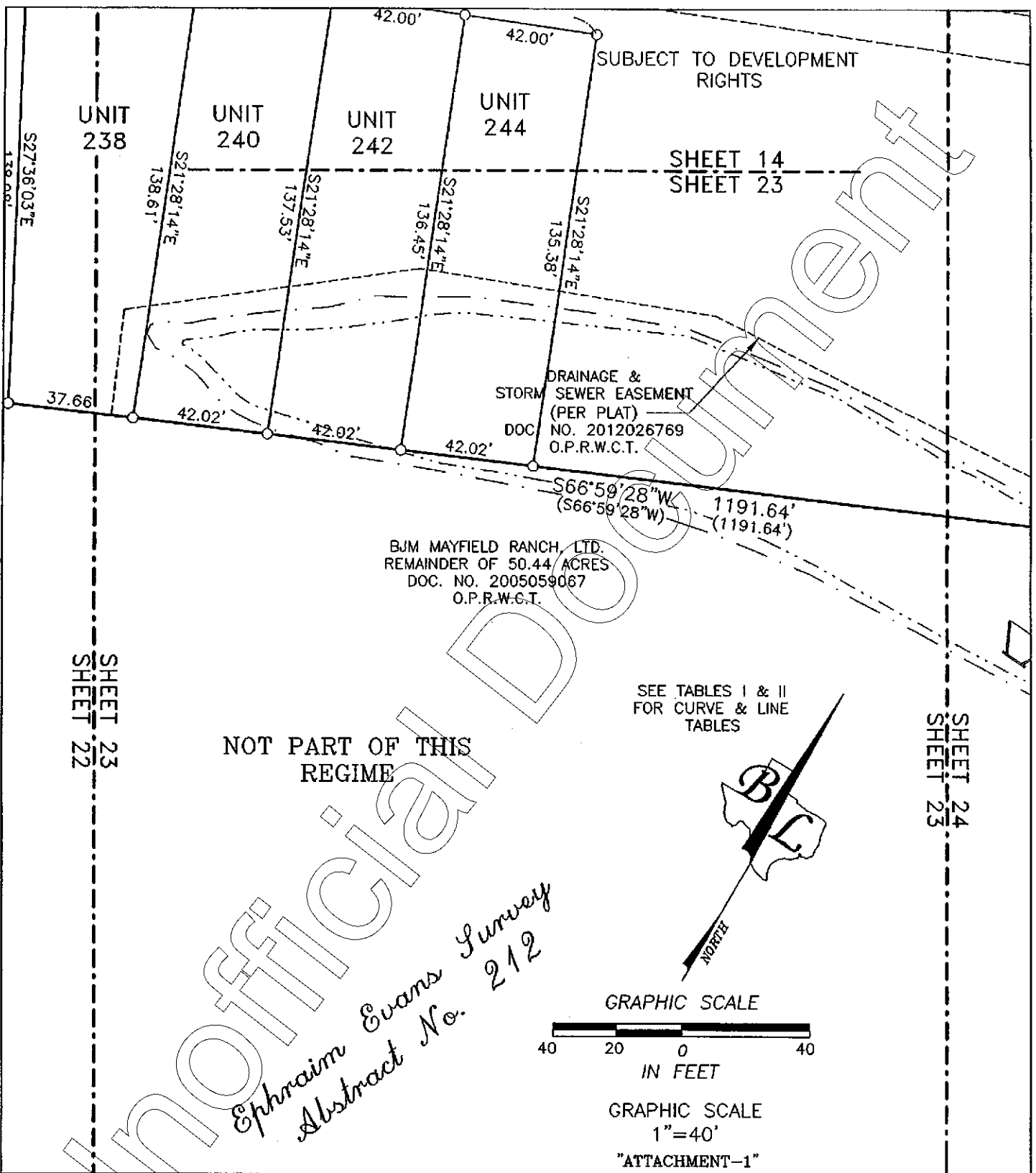
SHEET
21 of 26



PRESERVE AT MAYFIELD RANCH CONDOMINIUMS BEING 26.65 ACRES OF LAND OUT OF THE EPHRAIM EVANS SURVEY, ABSTRACT NUMBER 212 IN WILLIAMSON COUNTY, TEXAS AND BEING KNOWN AS LOT 14, BLOCK A, LOT 14 MAYFIELD RANCH ENCLAVE, A SUBDIVISION OF RECORD IN DOCUMENT NUMBER 2012028769 OF THE OFFICIAL PUBLIC RECORDS OF WILLIAMSON COUNTY, TEXAS AS CONVEYED TO ALLEN GROUP II, LLC BY INSTRUMENT OF RECORD IN DOCUMENT NUMBER 2007016507 OF THE OFFICIAL PUBLIC RECORDS OF WILLIAMSON COUNTY, TEXAS

BASELINE LAND SURVEYORS, INC.
PROFESSIONAL LAND SURVEYING SERVICES
8333 CROSS PARK DRIVE
AUSTIN, TEXAS 78757
OFFICE: 512.374.9722 FAX: 512.873.9743
ron-baseline@austin.rr.com

File: S:\Mayfield\Preserve at Mayfield Ranch\Draw\Preserve at Mayfield Ranch CONDO BASE	SHEET	
Job No.	Snapshot: Sy-Condo Regime	22 of 26
Scale (Hor.): 1"=40'	Scale (Vert.):	
Date: 06/04/14	Checked By: JSL	Drawn By: RLW



UNIT 238

UNIT 240

UNIT 242

UNIT 244

SUBJECT TO DEVELOPMENT RIGHTS

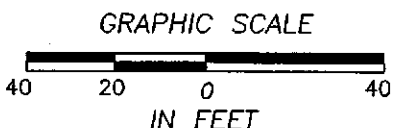
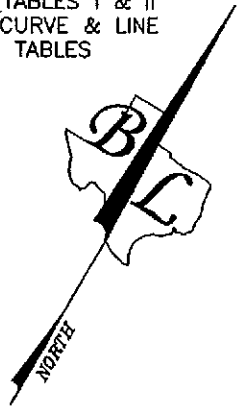
SHEET 14
SHEET 23

DRAINAGE & SEWER EASEMENT
(PER PLAT)
DOC NO. 2012026769
O.P.R.W.C.T.

BJM MAYFIELD RANCH LTD.
REMAINDER OF 50.44 ACRES
DOC. NO. 2005059067
O.P.R.W.C.T.

SEE TABLES I & II
FOR CURVE & LINE
TABLES

NOT PART OF THIS
REGIME



GRAPHIC SCALE
1"=40'
"ATTACHMENT-1"

SHEET 23
SHEET 22

SHEET 24
SHEET 23

*Ephraim Evans Survey
Abstract No. 212*

PRESERVE AT MAYFIELD RANCH CONDOMINIUMS
BEING 26.65 ACRES OF LAND OUT OF THE EPHRAIM EVANS
SURVEY, ABSTRACT NUMBER 212 IN WILLIAMSON COUNTY,
TEXAS AND BEING KNOWN AS LOT 14, BLOCK A,
LOT 14 MAYFIELD RANCH ENCLAVE,
A SUBDIVISION OF RECORD IN DOCUMENT NUMBER
2012026769 OF THE OFFICIAL PUBLIC RECORDS OF
WILLIAMSON COUNTY, TEXAS AS CONVEYED TO
ALLEN GROUP II, LLC BY INSTRUMENT OF RECORD IN
DOCUMENT NUMBER 2007018507 OF THE OFFICIAL PUBLIC
RECORDS OF WILLIAMSON COUNTY, TEXAS

BASELINE LAND SURVEYORS, INC.
PROFESSIONAL LAND SURVEYING SERVICES
8335 CROSS PARK DRIVE
AUSTIN, TEXAS 78757
OFFICE: 512.374.9722 FAX: 512.873.9743
ron-baseline@austin.rr.com

File: S:\Mayfield\Preserve at Mayfield Ranch\Draw\Preserve at Mayfield Ranch CONDO BASE	SHEET
Job No.	Snapshot: Sy-Condo Regime
Scale (Hor.): 1"=40'	Scale (Vert.):
Date: 06/04/14	Checked By: JSL Drawn By: RLW

SHEET
23 of 26

ESMT. 5

SHEET 13
SHEET 24

ESMT. 5

LOT 14
MAYFIELD RANCH ENCLAVE
DOC. NO. 2012026769
O.P.R.W.C.T.

ALLEN GROUP II, LLC.
26.65 ACRES
DOC. NO. 2007016507
O.P.R.W.C.T.

SUBJECT TO
DEVELOPMENT
RIGHTS

DRAINAGE &
STORM SEWER EASEMENT
(PER PLAT)
DOC. NO. 2012026769
O.P.R.W.C.T.

S66°59'28"W
(S66°59'28"W)

1191.64'
(1191.64')

ULTIMATE 4% ANNUAL CHANCE
FLOODPLAIN

ULTIMATE 1% ANNUAL CHANCE
FLOODPLAIN

NOT PART OF THIS
REGIME

SHEET 24
SHEET 23

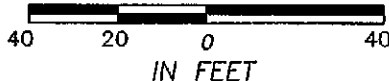
SHEET 25
SHEET 24

BJM MAYFIELD RANCH, LTD.
REMAINDER OF 50.44 ACRES
DOC. NO. 2005059067
O.P.R.W.C.T.

"ATTACHMENT-1"

*Ephraim Evans Survey
Abstract No. 212*

GRAPHIC SCALE



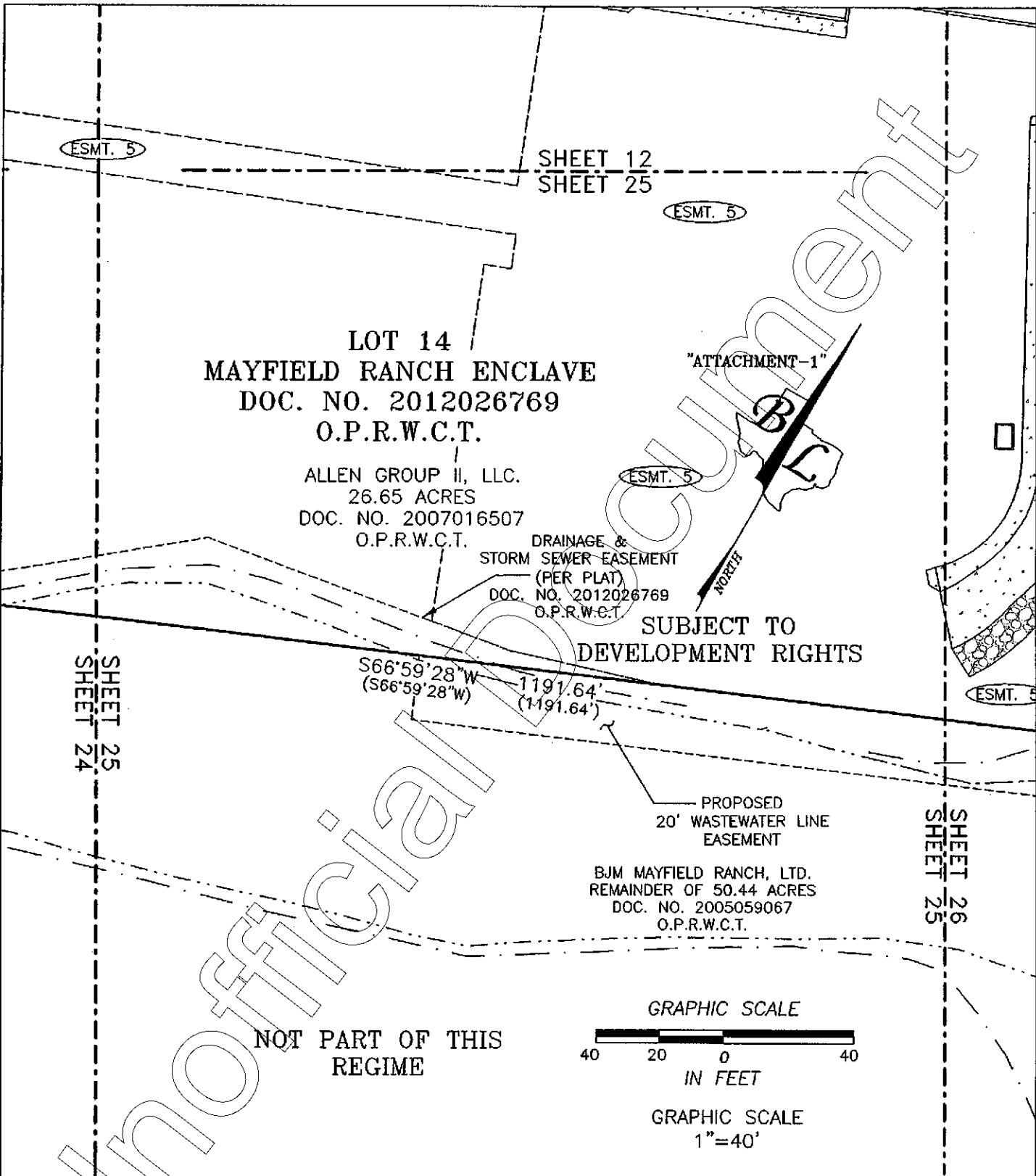
GRAPHIC SCALE
1"=40'

PRESERVE AT MAYFIELD RANCH CONDOMINIUMS
BEING 26.65 ACRES OF LAND OUT OF THE EPHRAIM EVANS
SURVEY, ABSTRACT NUMBER 212 IN WILLIAMSON COUNTY,
TEXAS AND BEING KNOWN AS LOT 14, BLOCK A,
LOT 14 MAYFIELD RANCH ENCLAVE,
A SUBDIVISION OF RECORD IN DOCUMENT NUMBER
2012026769 OF THE OFFICIAL PUBLIC RECORDS OF
WILLIAMSON COUNTY, TEXAS AS CONVEYED TO
ALLEN GROUP II, LLC BY INSTRUMENT OF RECORD IN
DOCUMENT NUMBER 2007016507 OF THE OFFICIAL PUBLIC
RECORDS OF WILLIAMSON COUNTY, TEXAS

BASELINE LAND SURVEYORS, INC.
PROFESSIONAL LAND SURVEYING SERVICES
8333 GROSS PARK DRIVE
AUSTIN, TEXAS 78757
OFFICE: 512.374.9722 FAX: 512.873.9743
ron-baseline@austin.rr.com

File: S:\Mayfield\Preserve at Mayfield Ranch\Draw\Preserve at Mayfield Ranch CONDO BASE	Snapshot: Sy-Condo Regime
Job No.	Scale (Hor.): 1"=40'
Scale (Vert.):	Date: 06/04/14
Checked By: JSL	Drawn By: RLW

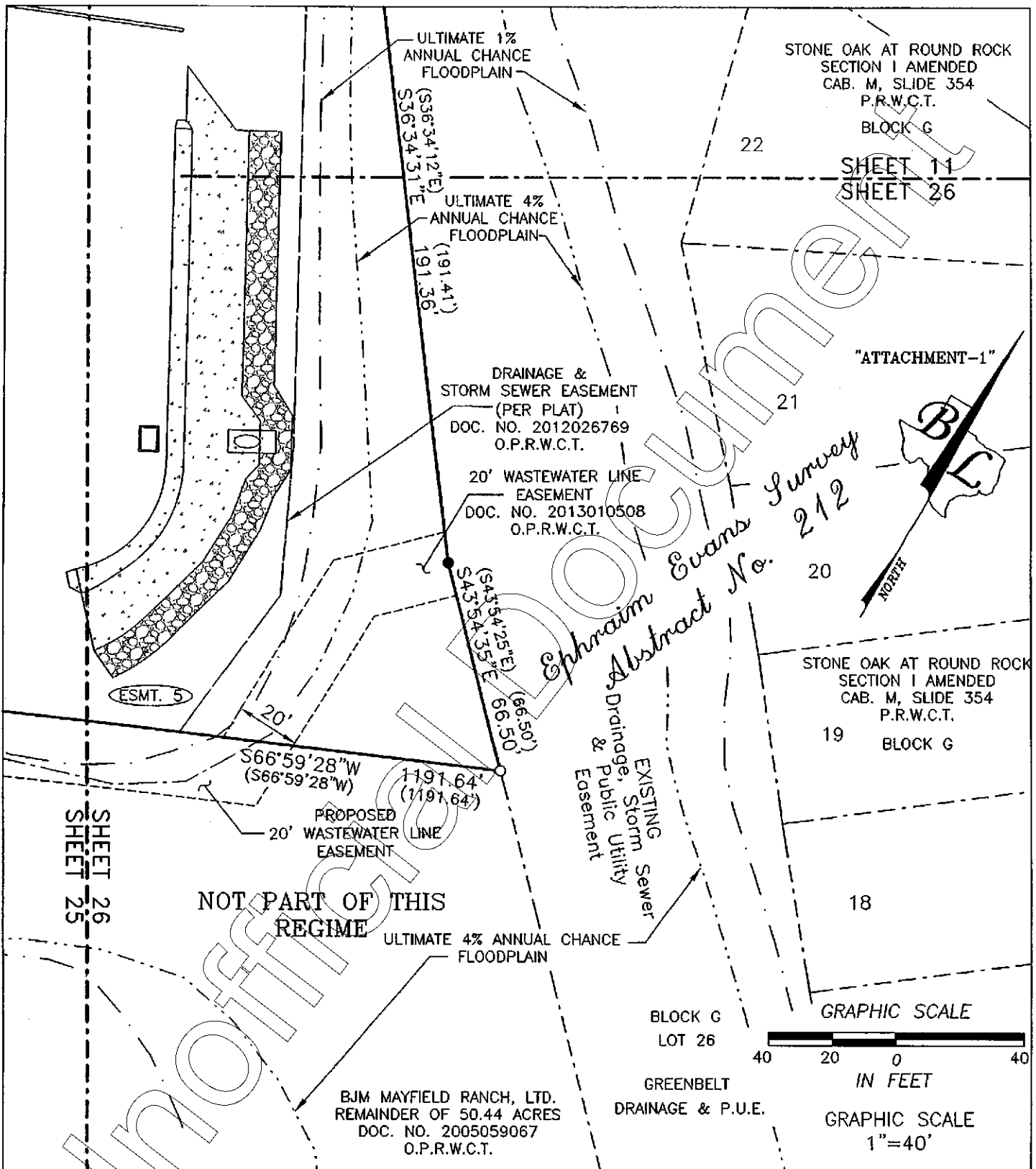
SHEET
24 of 26



PRESERVE AT MAYFIELD RANCH CONDOMINIUMS
BEING 26.65 ACRES OF LAND OUT OF THE EPHRAIM EVANS
SURVEY, ABSTRACT NUMBER 212 IN WILLIAMSON COUNTY,
TEXAS AND BEING KNOWN AS LOT 14, BLOCK A,
LOT 14 MAYFIELD RANCH ENCLAVE,
A SUBDIVISION OF RECORD IN DOCUMENT NUMBER
2012026769 OF THE OFFICIAL PUBLIC RECORDS OF
WILLIAMSON COUNTY, TEXAS AS CONVEYED TO
ALLEN GROUP II, LLC BY INSTRUMENT OF RECORD IN
DOCUMENT NUMBER 2007016507 OF THE OFFICIAL PUBLIC
RECORDS OF WILLIAMSON COUNTY, TEXAS

BASELINE LAND SURVEYORS, INC.
PROFESSIONAL LAND SURVEYING SERVICES
8333 CROSS PARK DRIVE
AUSTIN, TEXAS 78757
OFFICE: 512.374.9722 FAX: 512.873.9743
ron-baseline@austln.sr.com

File: S:\Mayfield\Preserve at Mayfield Ranch\Draw\Preserve at Mayfield Ranch CONDO BASE	SHEET
Job No.	25 of 26
Snapshot: Sy-Condo Regime	
Scale (Hor.): 1"=40'	
Scale (Vert.):	
Date: 06/04/14	Checked By: JSJ
	Drawn By: RLW



PRESERVE AT MAYFIELD RANCH CONDOMINIUMS BEING 26.66 ACRES OF LAND OUT OF THE EPHRAIM EVANS SURVEY, ABSTRACT NUMBER 212 IN WILLAMSON COUNTY, TEXAS AND BEING KNOWN AS LOT 14, BLOCK A, LOT 14 MAYFIELD RANCH ENCLAVE, A SUBDIVISION OF RECORD IN DOCUMENT NUMBER 2012026769 OF THE OFFICIAL PUBLIC RECORDS OF WILLAMSON COUNTY, TEXAS AS CONVEYED TO ALLEN GROUP II, LLC BY INSTRUMENT OF RECORD IN DOCUMENT NUMBER 2007016507 OF THE OFFICIAL PUBLIC RECORDS OF WILLAMSON COUNTY, TEXAS

BASELINE LAND SURVEYORS, INC.
 PROFESSIONAL LAND SURVEYING SERVICES
 8333 CROSS PARK DRIVE
 AUSTIN, TEXAS 78757
 OFFICE: 512.374.9722 FAX: 512.873.9743
 ron-baseline@austln.r.s.com

File: S:\Mayfield\Preserve at Mayfield Ranch\Draw\Preserve at Mayfield Ranch CONDO BASE	SHEET 26 of 26
Job No.	
Scale (Hor.): 1"=40'	
Scale (Vert.):	
Date: 06/04/14	Checked By: JSL
Drawn By: RLW	

EXHIBIT "B"

ATTACHMENT 3 TO THE DECLARATION OF CONDOMINIUM REGIME

COMMON INTEREST ALLOCATION AND VOTES

The Common Interest Allocation and Common Expense Liability for each Unit is 1/102. Each Unit is allocated one (1) vote.

THE ALLOCATED INTEREST ASSIGNED TO A PARTICULAR UNIT WILL DECREASE AS ADDITIONAL UNITS ARE CREATED AND ADDED TO THE REGIME BY THE DECLARANT.

AFTER RECORDING RETURN TO:

Robert D. Burton, Esq.
Winstead, PC
401 Congress Ave., Suite 2100
Austin, Texas 78701
Email: rburton@winstead.com



**FIFTH AMENDMENT TO
DECLARATION OF CONDOMINIUM REGIME
FOR THE PRESERVE AT MAYFIELD RANCH
CONDOMINIUMS**

(A Residential Condominium in Williamson County, Texas)

ADDING UNITS

236, 238, 240, 242, 244, 333, 334, 335, 336, 337, 338, 339, 340, 341, 342, 343, 345, 347, 349,
351, 501, 502, 503, 504, 505, 506, 507, 508, 509, 510, 511, 512, 513, 514, AND 516

Cross Reference to Declaration of Condominium Regime for The Preserve at Mayfield Ranch Condominiums, recorded as Document No. 2013005392, in the Official Public Records of Williamson County, Texas, as amended by that certain **First Amendment to Declaration of Condominium Regime for the Preserve at Mayfield Ranch Condominiums**, recorded as Document No. 2013018165, in the Official Public Records of Williamson County, Texas, as amended by that certain **Second Amendment to Declaration of Condominium Regime for the Preserve at Mayfield Ranch Condominiums**, recorded as Document No. 2013037094, in the Official Public Records of Williamson County, Texas, as amended by that certain **Third Amendment to Declaration of Condominium Regime for the Preserve at Mayfield Ranch Condominiums**, recorded as Document No. 2013063622, in the Official Public Records of Williamson County, Texas, and as amended by that certain **Fourth Amendment to Declaration of Condominium Regime for the Preserve at Mayfield Ranch Condominiums**, recorded as Document No. 2013088368, in the Official Public Records of Williamson County, Texas.

Unofficial Document

2014042091

Electronically Recorded

OFFICIAL PUBLIC RECORDS

Nancy E. Rister

Nancy E. Rister, County Clerk

2014 June 04 02:43 PM

FEE: \$157.00 PGS 36

Williamson County Texas