



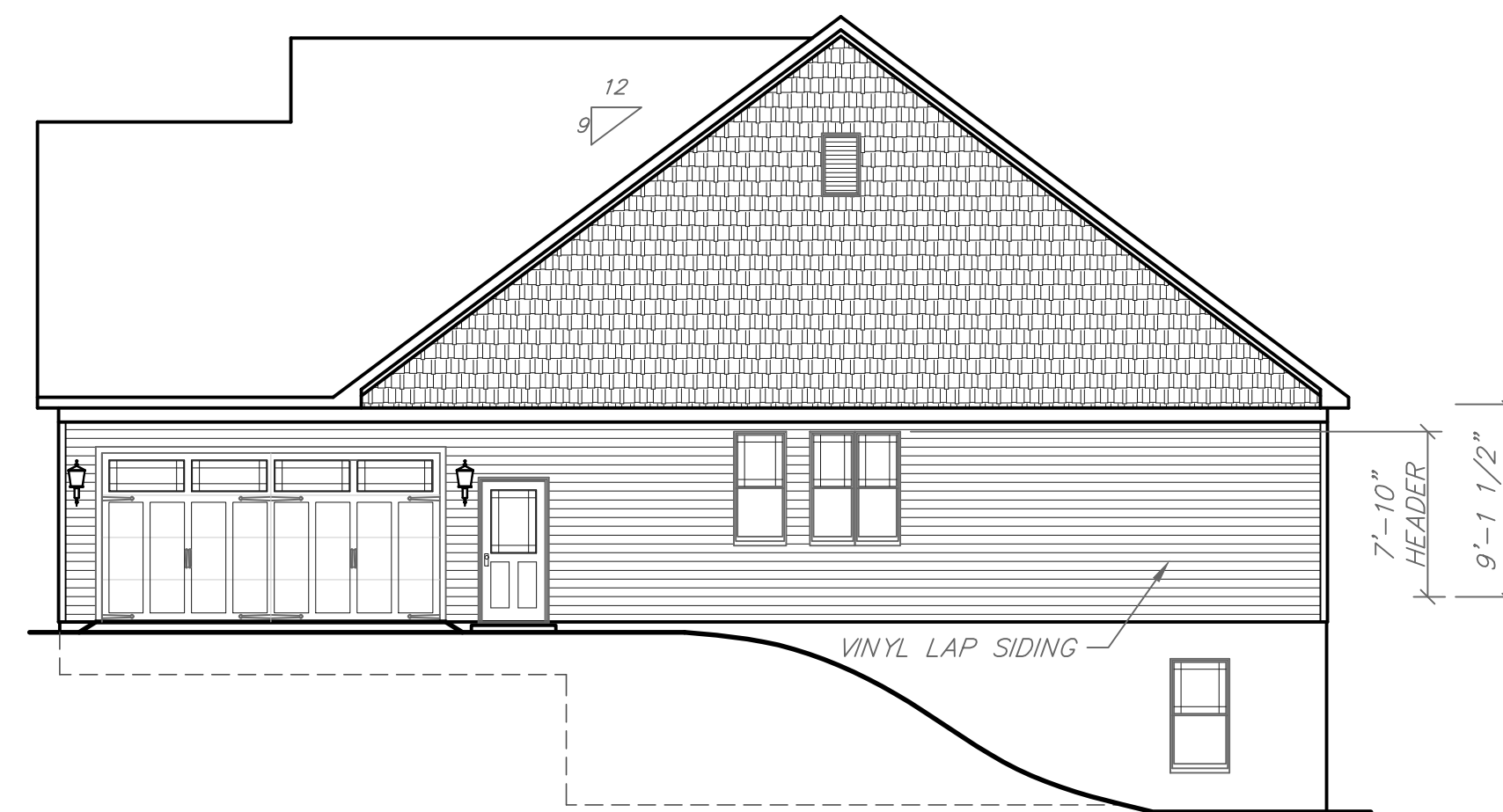
Similar Photo



**FRONT ELEVATION (SIDE LOAD)**

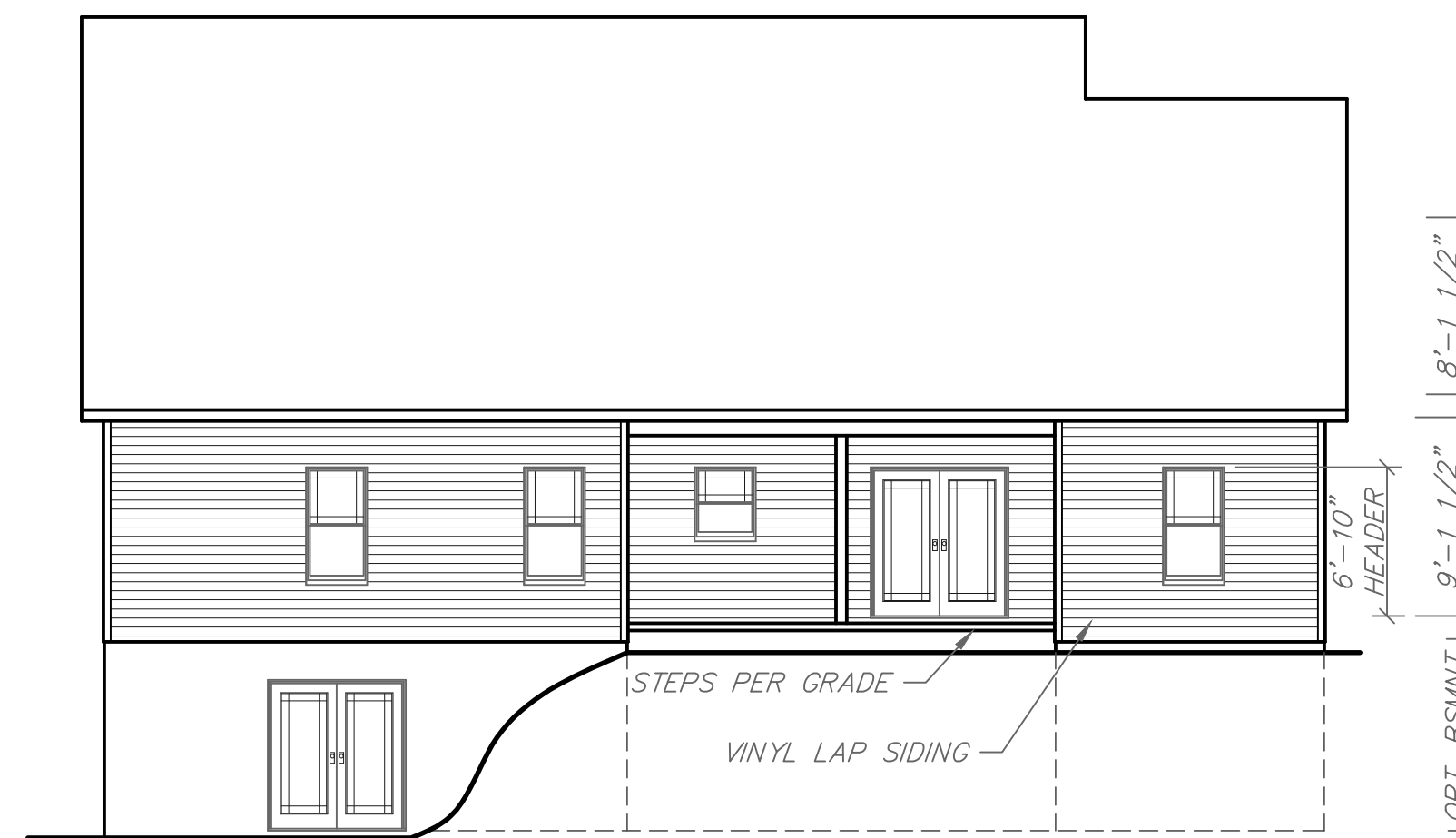
SCALE: 1/4" = 1'-0"

RAILING NOT REQUIRED  
WHEN WALKING SURFACE IS  
LESS THAN 30" FROM GRADE  
FOR 36" BEYOND WALKING SURFACE



**RIGHT ELEVATION (SIDE LOAD)**

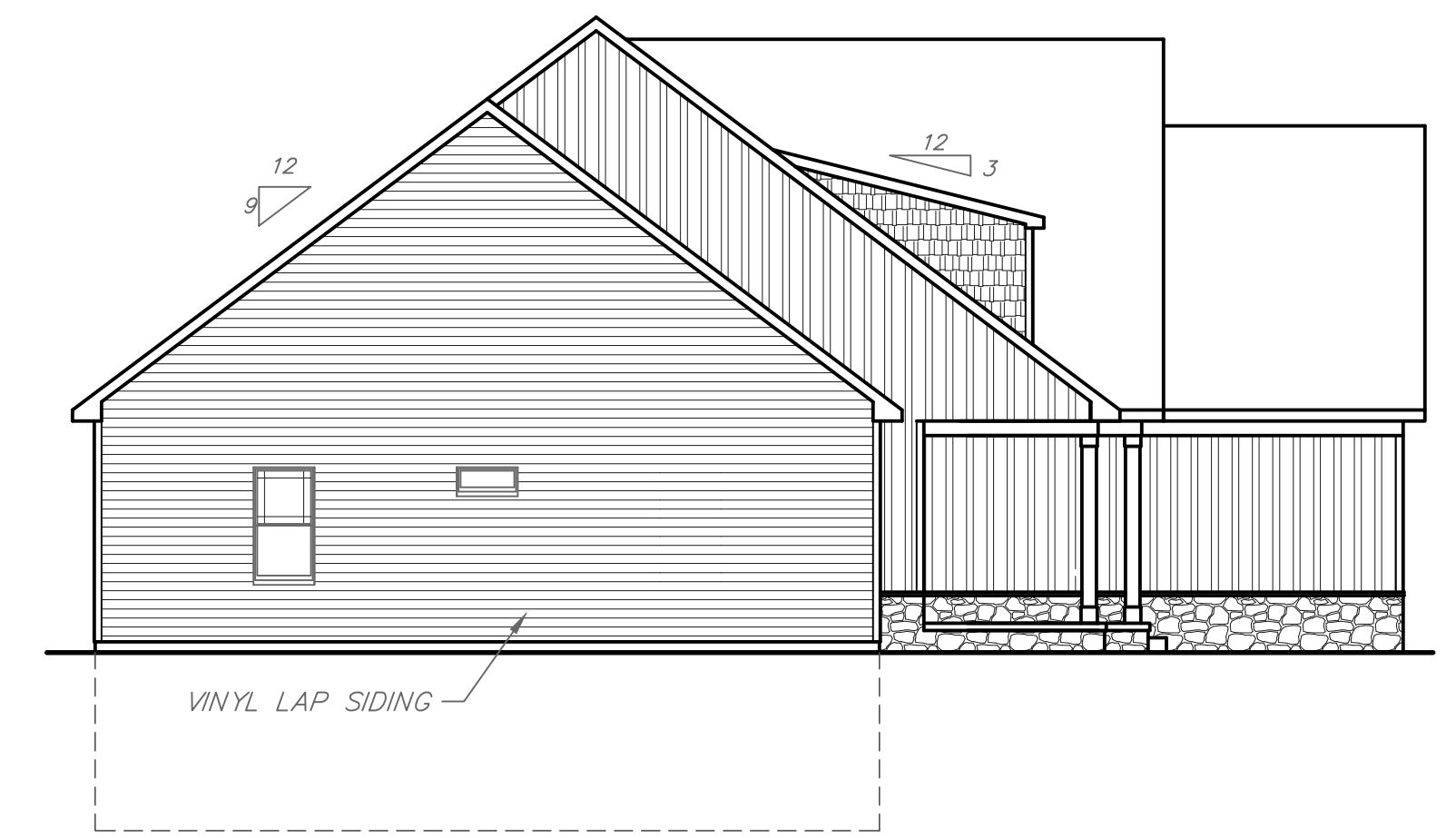
SCALE: 1/8" = 1'-0"



**REAR ELEVATION**

SCALE: 1/8" = 1'-0"

NOTE:  
BASEMENT DOOR & WINDOW SIZES &  
LOCATIONS TO BE DETERMINED  
PER FINAL GRADE



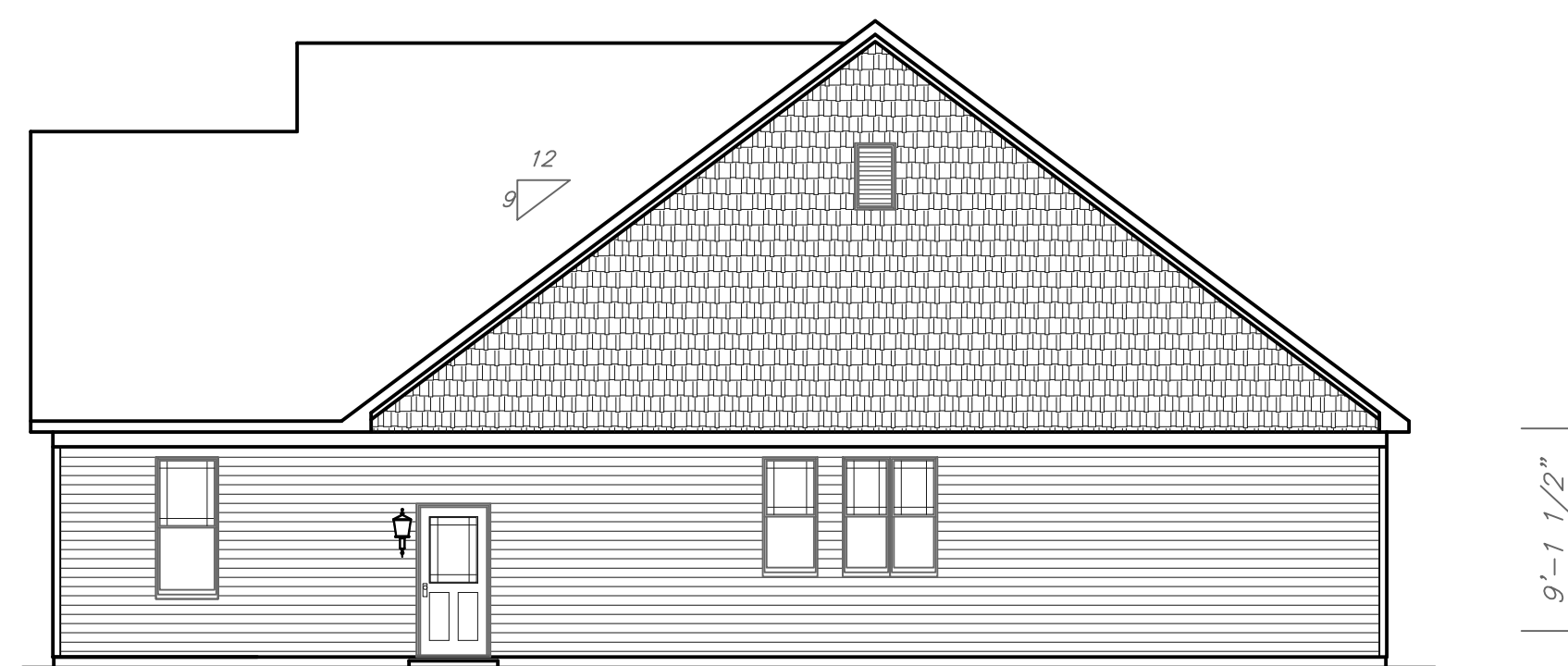
**LEFT ELEVATION**

SCALE: 1/8" = 1'-0"



**FRONT ELEVATION (FRONT LOAD)**

SCALE: 1/8" = 1'-0"



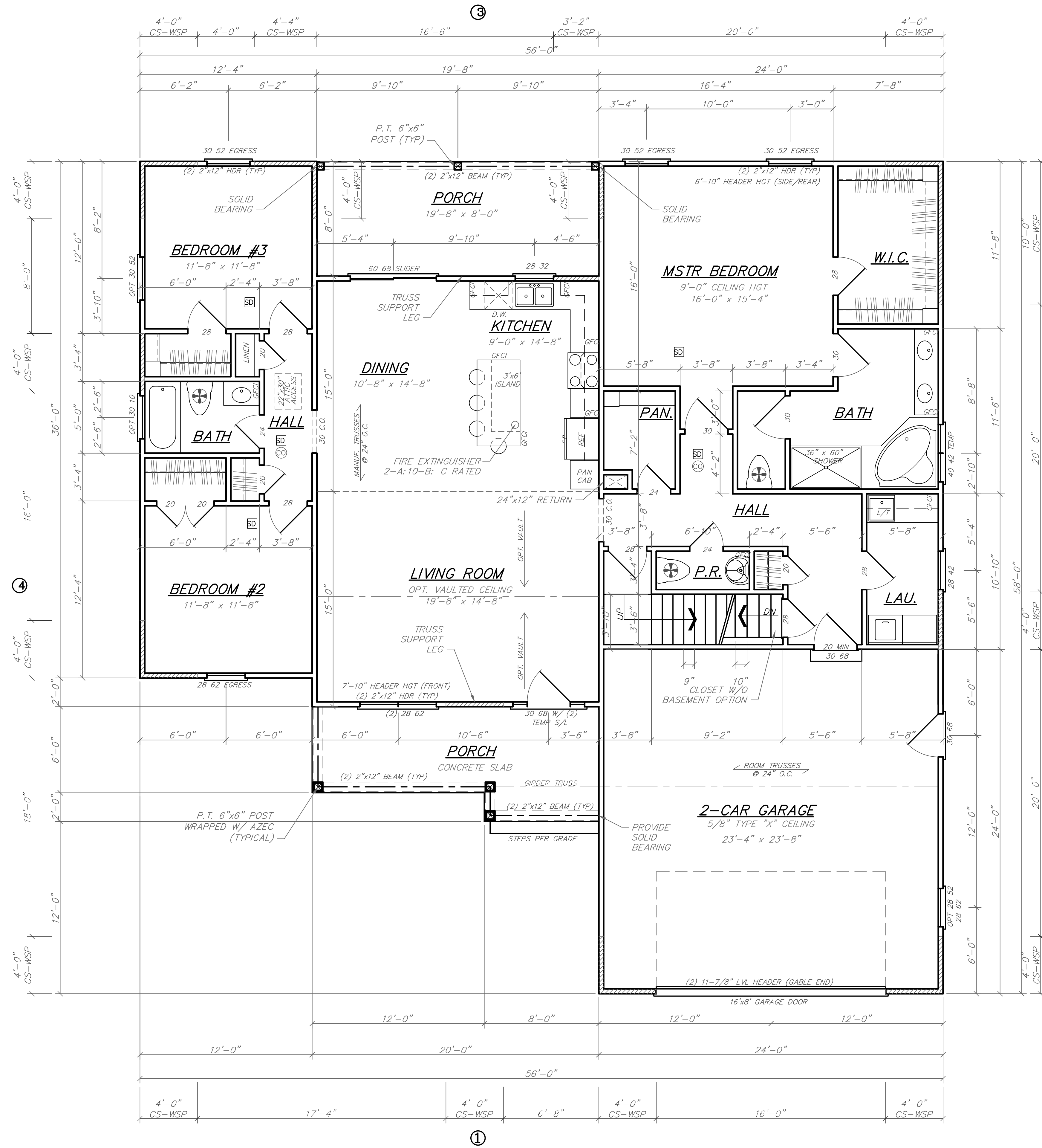
**RIGHT ELEVATION (FRONT LOAD)**

SCALE: 1/8" = 1'-0"

ANNABELLE MODEL - LOT 11

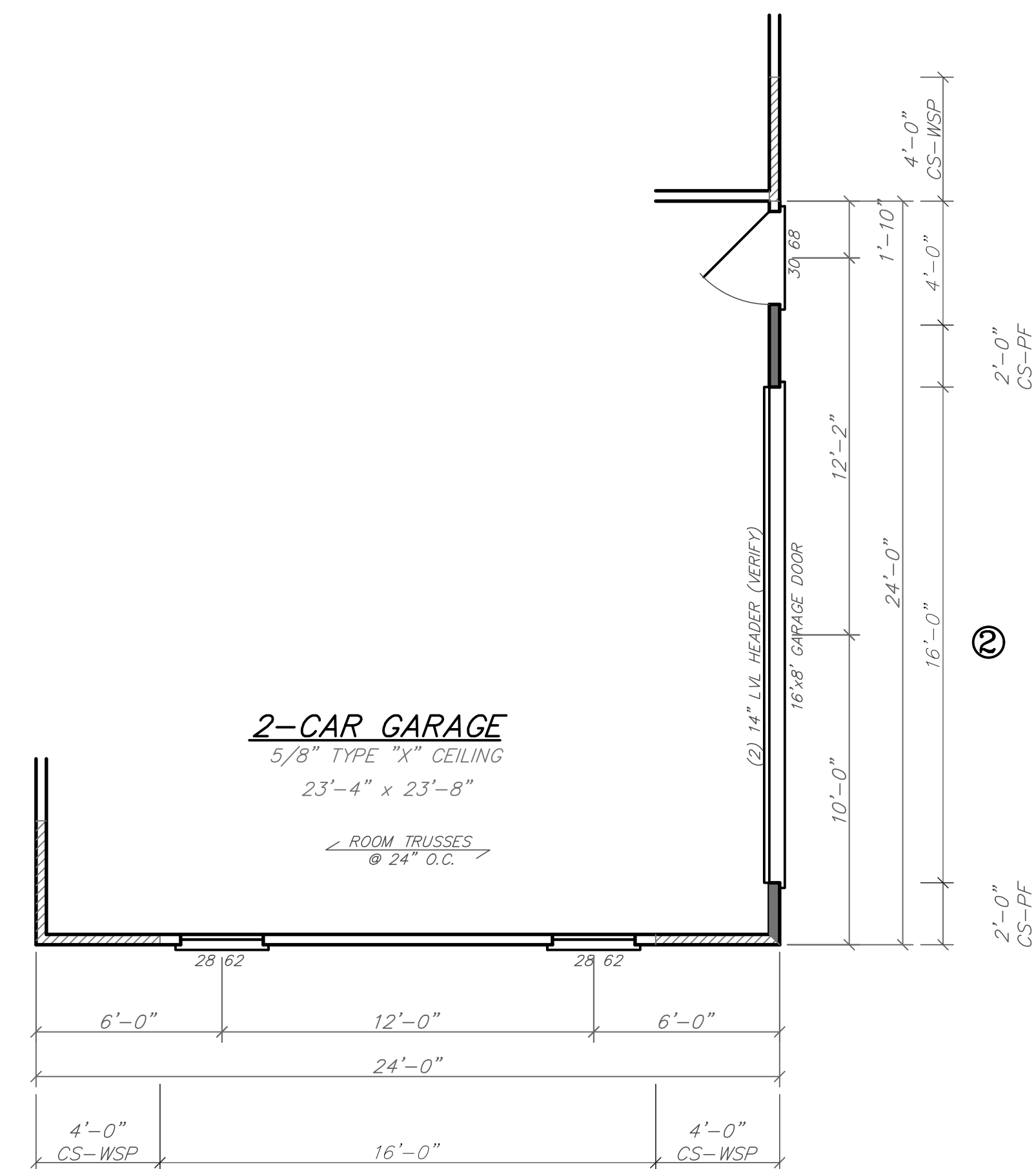
**ANNABELLE MODEL**

BUILDER: BRETT BOYCE  
DRAWINGS BY: DESIGN OPTIONS INC (540) 825-4656  
DON MAYER - DESIGNER  
410 N WEST ST, CULPEPER, VA 22701  
DRAWING FILE: C:\DWG\DO\BOYCE-ANNABELLE-LOT11.DWG  
© MAY 11, 2020 SHEET 1 OF 5 ED



**FIRST FLOOR PLAN**

SHOWN W/ PRACTICAL WIND BRACING  
SCALE: 1/4" = 1'-0"



**①**

**SIDE LOAD GARAGE OPTION**

SHOWN W/ PRACTICAL WIND BRACING  
SCALE: 1/4" = 1'-0"

ANNABELLE MODEL

**ANNABELLE MODEL-LOT 11**

BUILDER: BRETT BOYCE  
DRAWINGS BY: DESIGN OPTIONS INC (540) 825-4656  
DON MAYER- DESIGNER  
410 N WEST ST, CULPEPER, VA 22701  
DRAWING FILE: C:\DWG\DO\BOYCE-ANNABELLE-LOT11.DWG  
© MAY 11, 2020 SHEET 3 OF 5 ED

