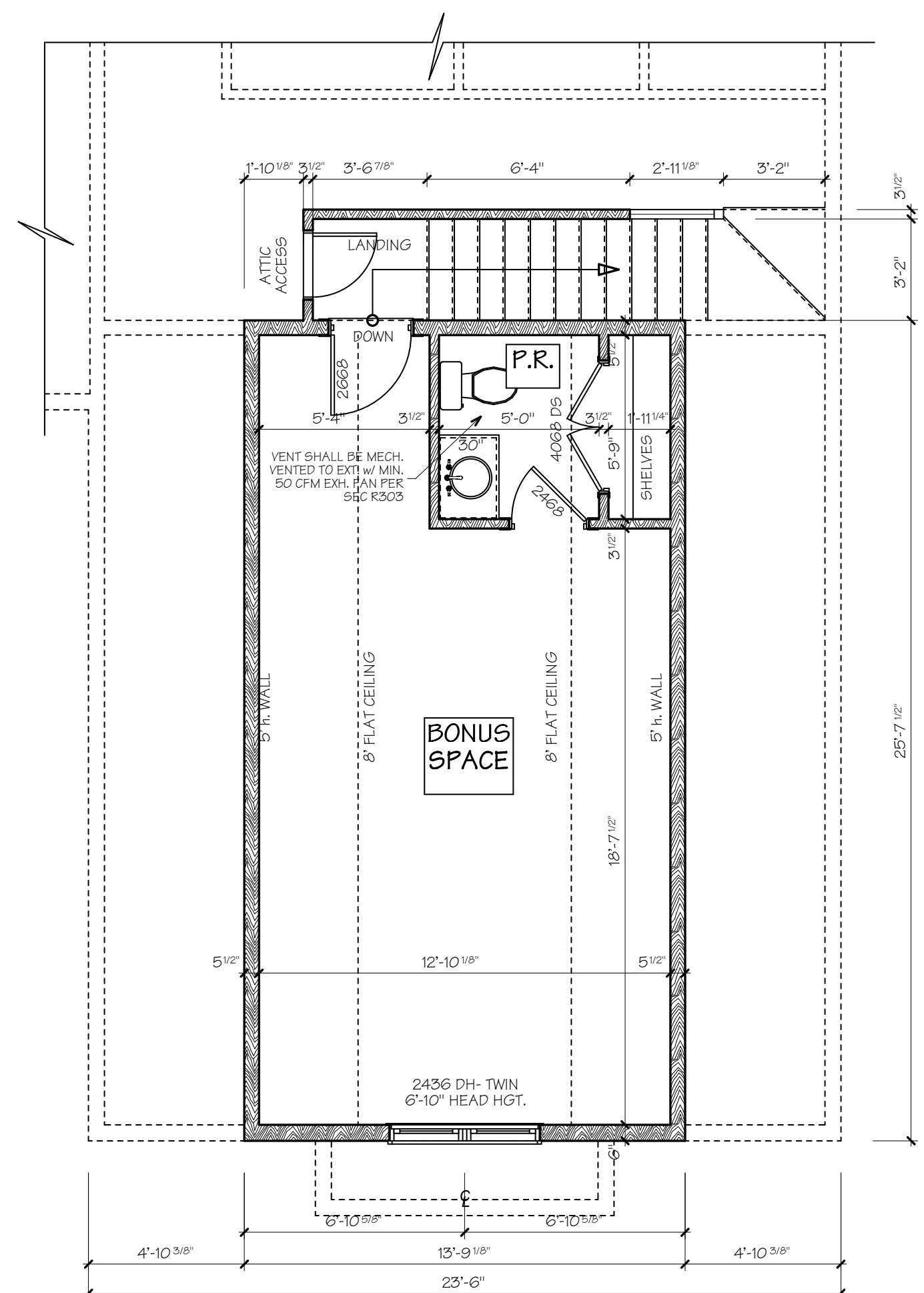


○ LEFT SIDE ELEVATION
SCALE: 1/4" = 1'-0"

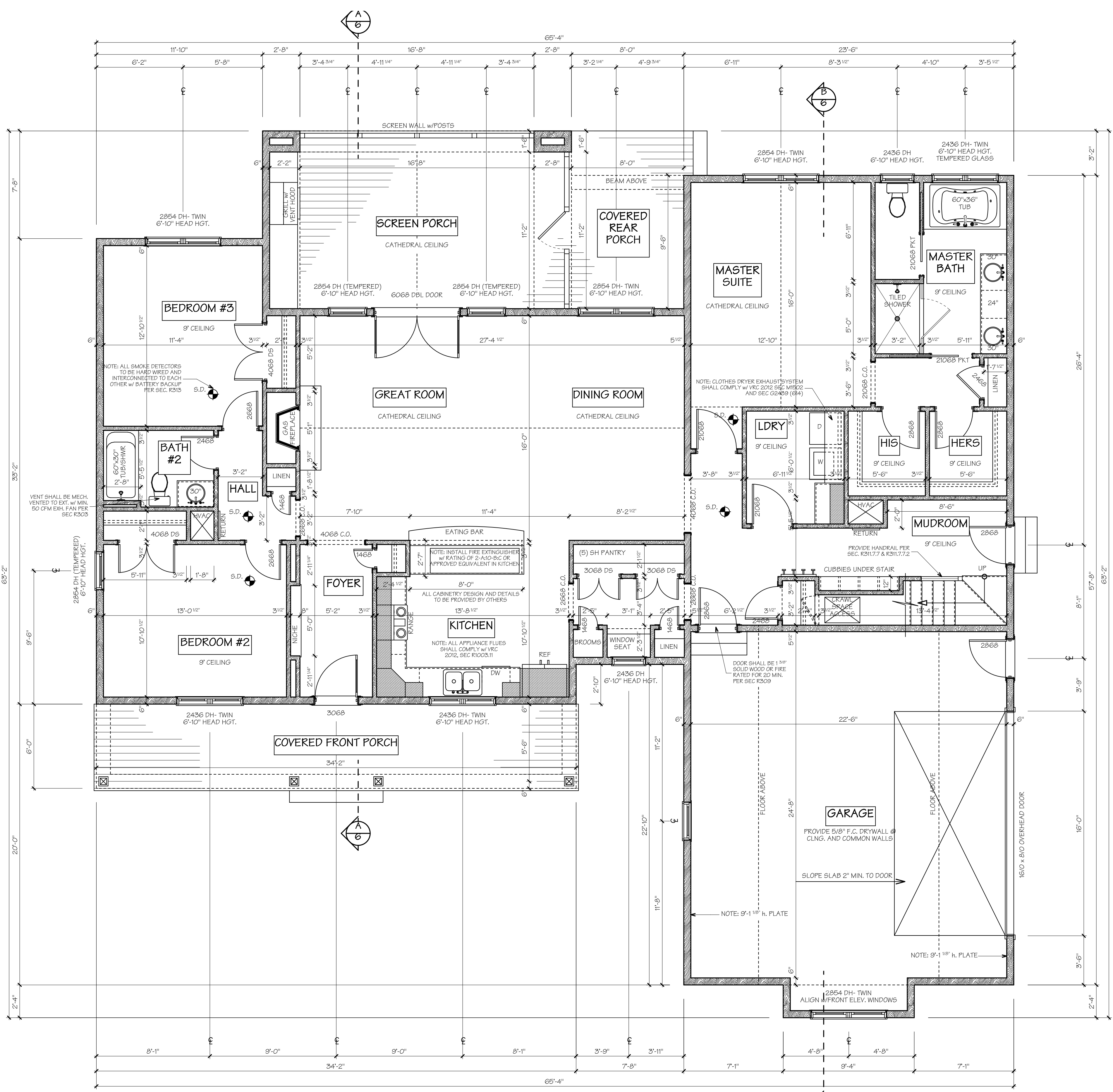


○ FRONT ELEVATION
SCALE: 1/4" = 1'-0"



BONUS SPACE FINISHED SQUARE FOOTAGE = 355 SF
 CEILINGS ARE VAULTED TO 8' h.

BONUS ROOM FLOOR PLAN
 SCALE: 1/4" = 1'-0"



MAIN LEVEL FINISHED SQUARE FOOTAGE = 1,983 SF
 MAIN LEVEL WALLS ARE 9'-1 1/8" h. UNLESS NOTED OTHERWISE

MAIN LEVEL FLOOR PLAN
 SCALE: 1/4" = 1'-0"