



Plenitus

CASE STUDY



FRIMLEY PARK HOSPITAL, SURREY
A Case Study by Plenitus Construction Services

PROJECT OVERVIEW



Project Details

Client: Frimley Health NHS Foundation Trust

Site: Portsmouth Road, Frimley, Surrey, GU16 7UJ

Principal Contractor: Neilcott Construction Limited

Project Value: £320k

Overview

Frimley Park Hospital was opened to patients from North East Hampshire and West Surrey in 1974. In 2014, it amalgamated with Heatherwood and Wexham Park Hospitals to create Frimley Health NHS Foundation Trust. The trust currently provides NHS hospital services for around 900,000 people across Berkshire, Hampshire, Surrey and south Buckinghamshire.

About the Project

Due to the age of the building, and following a structural survey, it was identified that some of the original structure required additional support in order to extend the life span.

Plenitus Construction Services Limited (PCSL) were responsible for the supply and installation of the structural steel to Theatres 3 & 4, providing additional support to the light weight concrete roof planks. The contract value was circa £32k.

SCOPE OF WORKS & METHODOLOGY

SCOPE

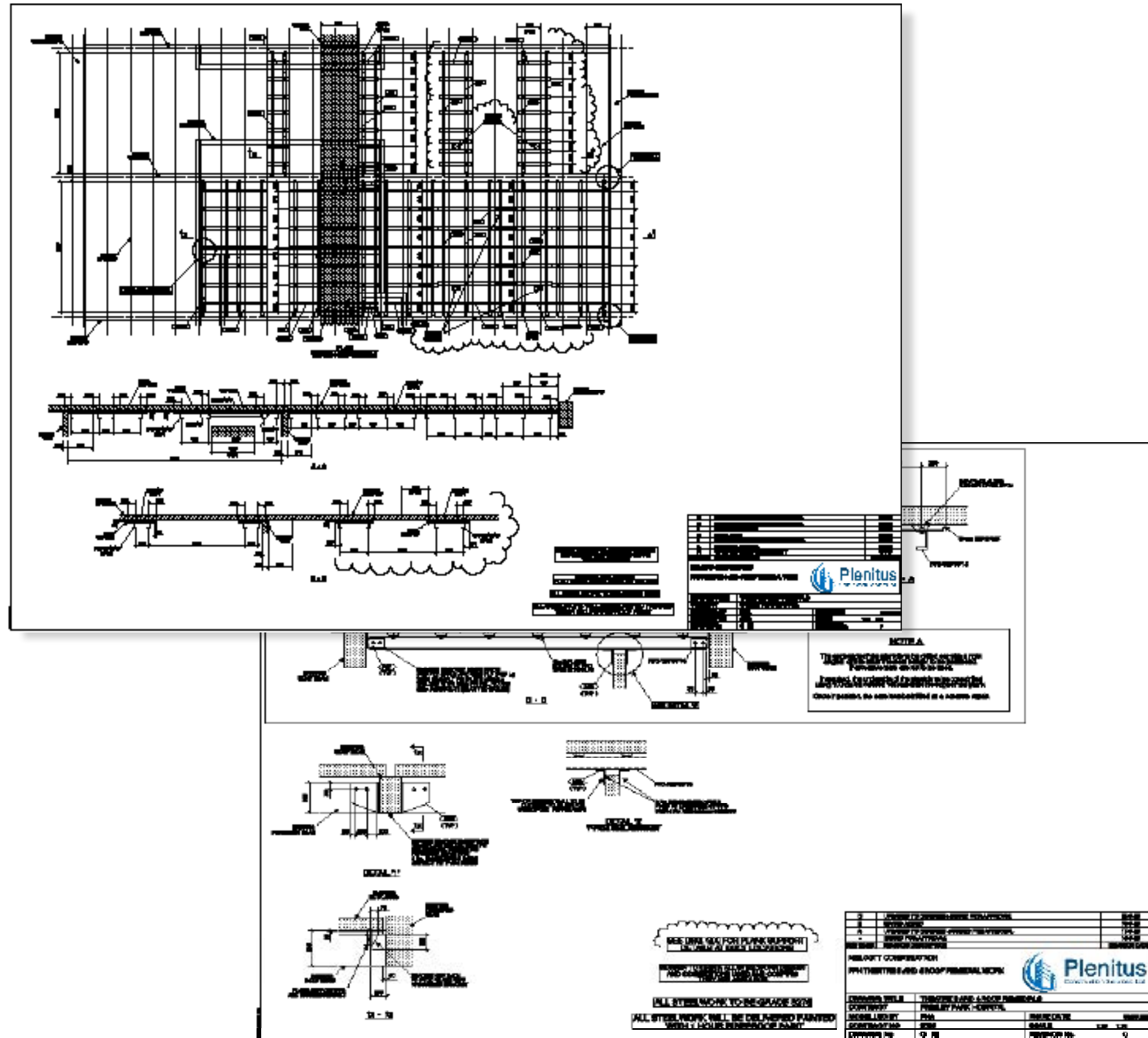
Supply and install structural steelwork to the underside of the lightweight concrete roof planks to Theatres 3 & 4.

METHODOLOGY

- Site Survey - Following the completion of the removal of the existing suspended ceiling and services running to the underside of the roof planks, PCSL undertook a survey of the existing structure to ascertain critical dimensional information in order to allow the General Arrangement (GA's) drawings to be produced.
- The design of the steelwork and connections was provided by Gurney Consulting Engineers in this instance.
- GA Drawings - Produce GA's by modelling the steelwork into as-built drawing information provided by the Client, and cross checking with dimensional information taken from site during the survey, for review by Client and thier appointed engineer and architect.
- Fabrication Drawings - On approval of GA's, produce fabrication drawings
- Fabrication - Manufacture members in accordance with to BS EN 1090-2: 2008 Execution of steel structures and aluminium structures part 2 – Technical requirements for the execution of steel structures, Execution Class 2 (Exc 2), to meet adequate levels of mechanical resistance, stability, serviceability and durability. All steelwork to be painted with fire protection paint in compliance with BS 476 Part 21 Class 60 Minutes Resistance
- Installation - Install steel as detailed on GA's/ Marking Plans
- As-Built Information - Provide As-built Drawings

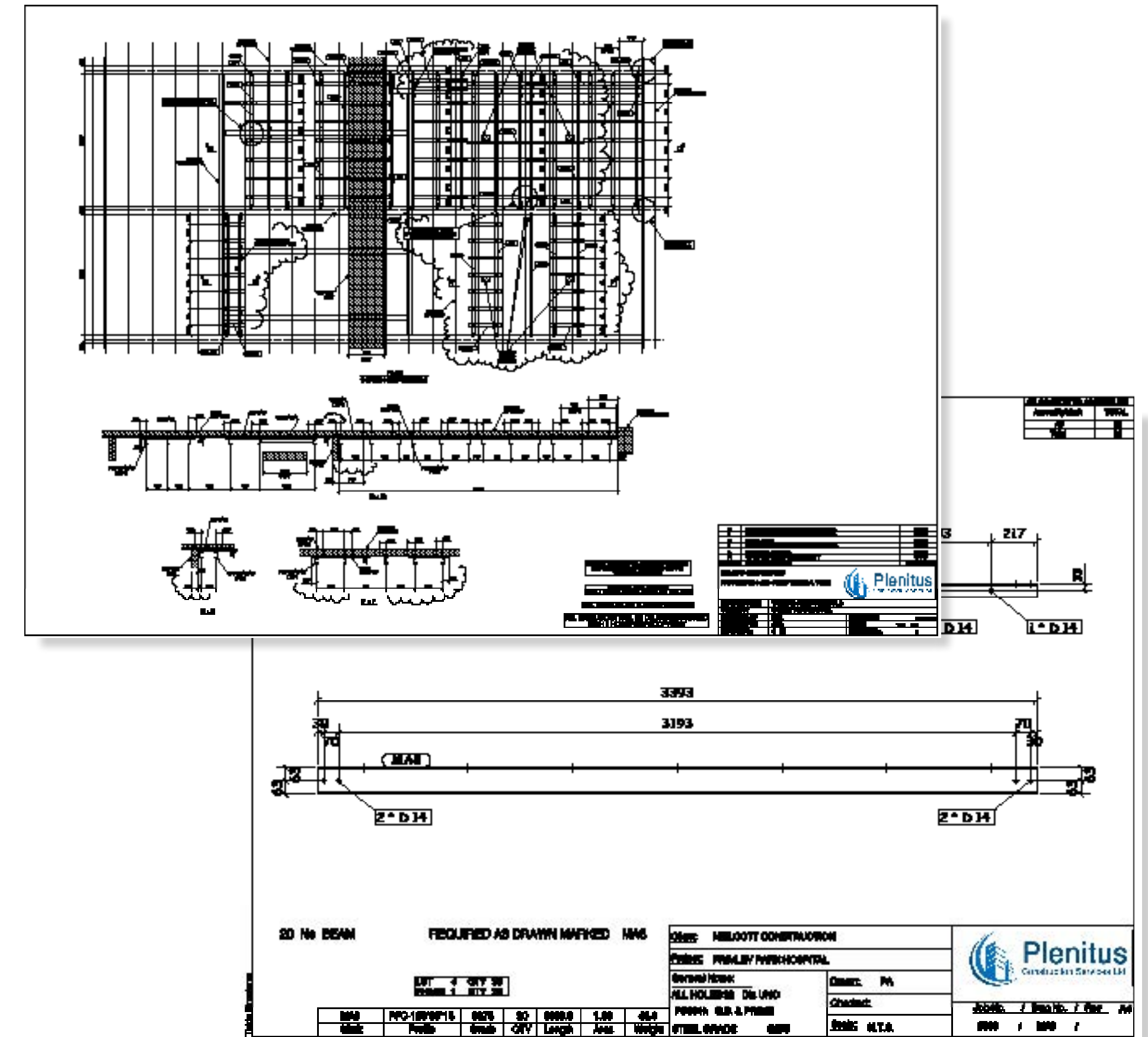
DELIVERABLES

GA & Fabrication Drawings



GA's & Fabrication Package

Theatre 3



GA's & Fabrication Package

Theatre 4

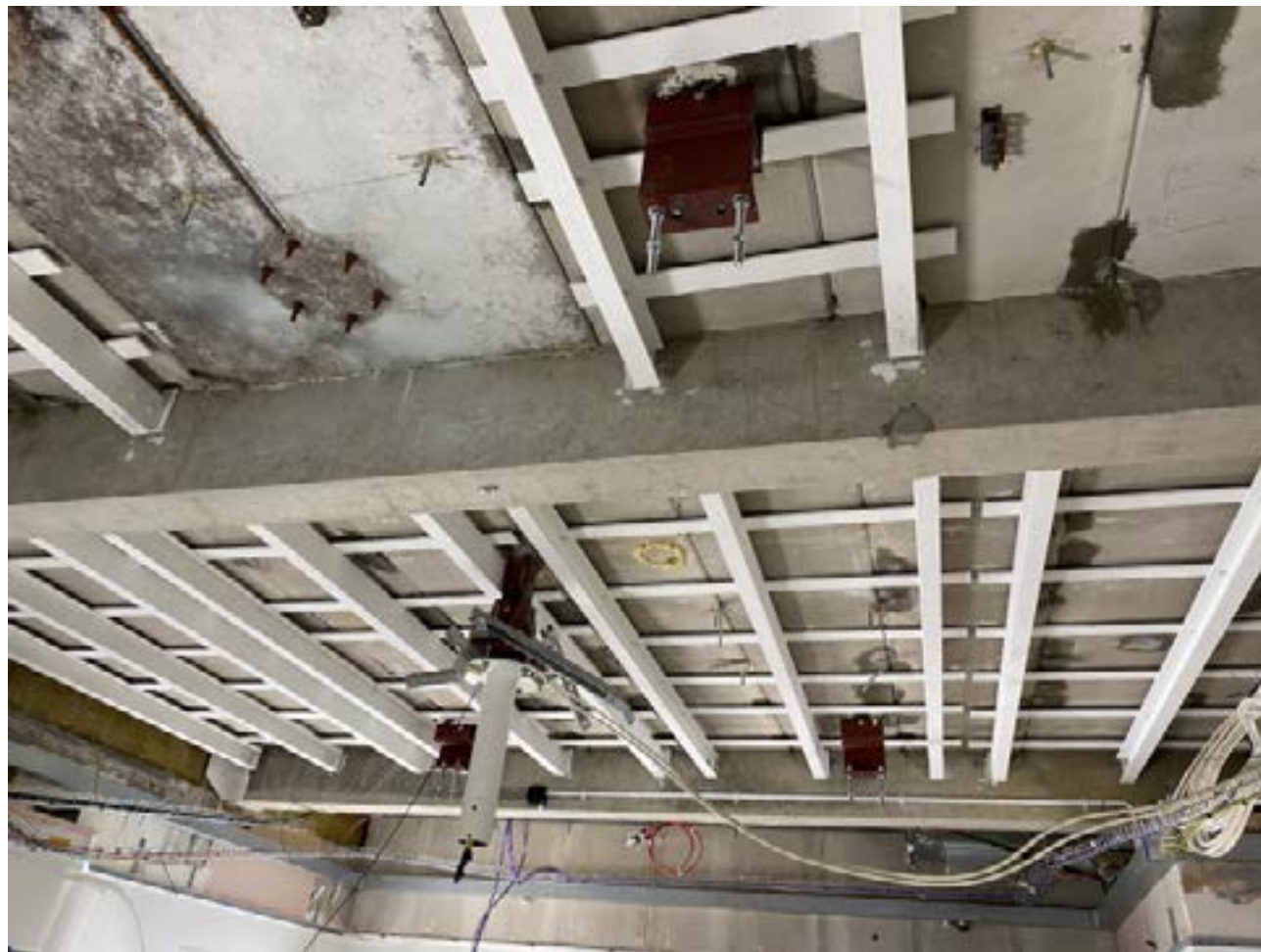
PHOTOGRAPHS



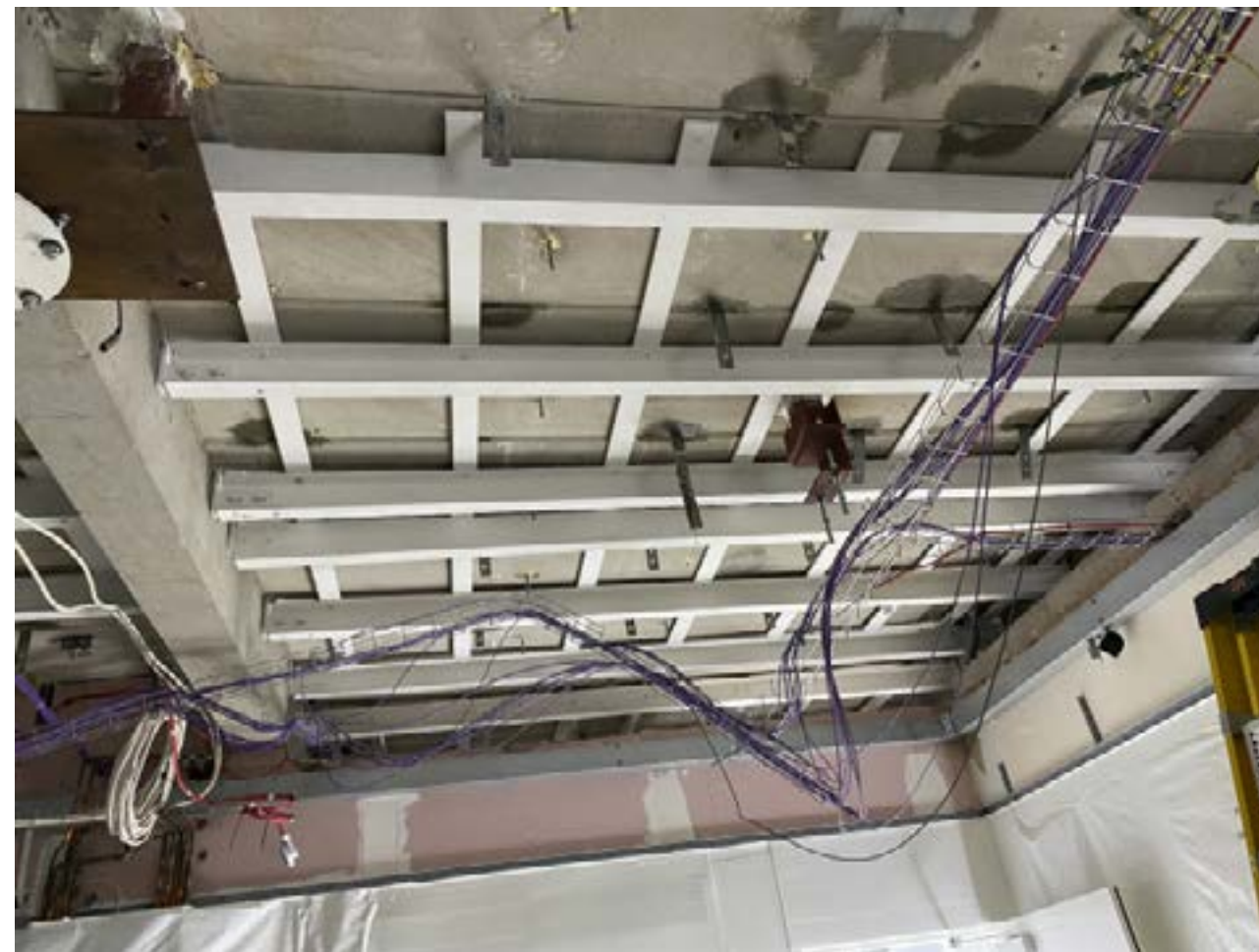
Pre-Installation
Theatre 3



Pre-Installation
Theatre 4



Post Installation
Theatres 3



Post Installation
Theatre 4



Registered Address: Plenitus Construction Sevices Limited, 3 Church Street, Odiham, Hook, Hampshire, RG29 1PU

Company Registration No: 106626658; VAT No: 266864850

W: www.plenitus.uk T: 01256 474 869 M:0796 9861 688