



*Swanson
Cattle
Company*

BUZ
926Y

53

38th Annual Production Sale
MARCH 5, 2024 - 1 PM

AT THE RANCH NEAR OXFORD, NEBRASKA

SELLING 90 REGISTERED BALANCER, SIMANGUS, ANGUS, RED ANGUS BULLS, PLUS 25 REGISTERED BALANCER & RED ANGUS HEIFERS!

Welcome to the Swanson Cattle Bull Sale

We are thrilled once again to welcome you to our 38th annual production sale. We have been in the Seed Stock business since 1984. Recognizing the benefits of heterosis, we have and will continue cross breeding the best low maintenance, long lasting, and powerful maternal cows. We have fed 40 plus pens of raised cattle over the years. The cattle normally gain from 3.5 to 4.0 pounds a day, yield from 64 to over 65%. We have pens grading from 90 to 100% choice or better, conversions as low as 5.10. Last year we had a pen command a \$149 a head premium. Our cows are strictly culled for disposition, feet, and udders. These females also have a lot of carcass merit, maternal instincts, performance with a lot of calving ease.

We are excited about this year's set of bulls. These cattle will pass on muscle, fleshing ability, and soundness in a complete package. The bulls will sire top notch feeder calves and excellent replacement heifers with a program behind them. The bulls are developed on a ration to grow them towards their potential.

Drought conditions persisted for much of the year across the plains and Midwest. That being said with the national cow herd at a 60 year low, we expect prices to stay very good and possibly better in the near future. This is a great time to be in the cattle business.

We look forward to spending the day with you and serving you lunch. Feel free to stop by and see the bulls prior to the sale. Thank you for considering our program. We look forward to seeing you!

Jeff & Denice Swanson
Seth & Jami Swanson

New to the Herd

THEA MONROE
SWANSON

January 4, 2024
Daughter of Zack and Allisa



TABLE OF CONTENTS

| | |
|-------------------|--------------|
| Balancer Bulls | Lots 1-58 |
| Simm Angus Bulls | Lots 59-61 |
| Angus Bulls | Lots 62-80 |
| Red Angus Bulls | Lots 81-87 |
| Balancer Heifers | Lots 88-100 |
| Red Angus Heifers | Lots 101-113 |

38TH ANNUAL BULL SALE

TUESDAY, MARCH 5, 2024 / 1:00 PM (CST)

SALE DAY PHONES

Jeff Swanson 308-991-0727
Seth Swanson 308-991-6974

SALE LOCATION

Swanson Cattle Co
72408 I Road / Oxford, NE 68967

DIRECTIONS

From Holdrege: 10 South, 5 West, 1 North
From Atlanta: 1 South, 1/2 East, 2 South
From JCT. HWY 4 & 183: 5 West, 1 North
From JCT. HWY 6 & 34 & HWY 4: 4 1/2 East, 1 North

SALE SCHEDULE

9:30 AM Bulls available for viewing
11:00 AM Complimentary Lunch
1:00 PM 38th Annual Swanson Cattle Co Bull Sale
Bulls available for viewing by appt. any time prior to sale day.

AUCTIONEER

Kyle Elwood 785-493-2901
AGA Rep. Tom Strahm 785-547-7999

REPRESENTATIVES

Stock Exchange - Guy Pevery 785-456-4390
American Cattleman - Randy Rasby 308-539-6195
Tri State Livestock News & Fence Post
- Cody Nye 308-760-8588

RANCH HELP

Riley Rhone, Josh Morten, Shay Swanson, Zack Swanson, Danny Elwood, Greg Swanson, Dave Kearney, Chris Swanson, Matt Wilken, Gary Wilken, Ryan Ludeke, Jared Booe, Chad Booe, Bobby Hueftle

GUARANTEE: All bulls selling for \$3,500 or more will carry a first breeding season guarantee. In the event a bull dies in the first breeding season, we will credit 50% of the purchase price. If a problem arises, please call us ASAP and we will make it right.

HERD HEALTH: All bulls have been footrot vaccinated and will be fertility tested by delivery.

BULL BOARD: Free board on all bulls until March 15th. Feeding arrangements are available until May 1st @ \$3.00 per day. We offer free delivery within a 200 mile radius on bull purchases of \$5,000 or more. We will assist with delivery on all purchases. Delivery will start in mid-March. Heifers will need picked up within 2-3 Days.

SEMEN INTEREST: SCC is going to retain 50% semen interest in all bulls selling. This means that if semen sales develop on a bull, the buyer and seller would split revenue equally. Also if the seller would want to use the bull for in-herd use, the seller would collect the bull at the seller's expense and the buyer's convenience. The buyer would have all possession rights.

TERMS OF SALE: Cash, unless other arrangements are made prior to the sale.

BIDDING: All animals sell to the highest bidder. Any disputes or challenges regarding bids shall be settled by the auctioneer and his decision shall be final. Telephoned bids may be forwarded to the auctioneer, representatives, or herdsman and will be handled with strictest confidence. Prior arrangements for telephone bids at sale time must be made.

LIABILITY: All precautions possible will be taken to protect the safety of the buyers and others attending the sale. Nevertheless, no responsibility will be assumed by the auctioneer or the host ranch in the event of accidents or of loss or damage of property.

VOLUME DISCOUNTS: Purchase 5 or more bulls for a 5% discount.

ONLINE BIDDING: The sale will be live on DVAuction. Please register a few days in advance of the sale. Call 402-316-5460 for assistance getting signed up to bid.



TWO PROGRAMS.TWO SALES.

UNBELIEVABLE OPPORTUNITY



Swanson
Cattle
Company

SWANSON CATTLE COMPANY

38th Annual Bull Sale
Tuesday, March 5, 2024
1:00 PM (CST)

At the Ranch near Atlanta, NE

WARNER BEEF GENETICS

Genetic Investment Bull Sale
Wednesday, March 6, 2024
1:00 PM (CST)

At the Ranch near Arapahoe, NE

200 BULLS & 25 OPEN HEIFERS SELL IN TWO DAYS

- **Age-Advantaged 18 month old and spring yearling**
- **Gelbvieh, Balancer, Angus, Red Angus, Simm Angus**
- **Sight Unseen Guarantee - Full Guarantee**
- **Volume Discounts**
- **Coordinated Delivery Options**
- **Sons of breed-leading Sires Sell - Large Sire Groups**

DVAuction

Broadcasting Real-Time Auctions Watch and Bid Online for FREE!

www.DVAuction.com
support@dvauction.com
402-316-5460 / 402-474-5557

Scan and check out website for more details!



HERDSIRES



BUZZ 111F



HOWARD 101H



NEWS FLASH 8701H



RIP 172G



Broadwater 1006



Resource 102E



Justified 3023



Red Wood 1941



ENERGIZE F121



Early Encounter 536E



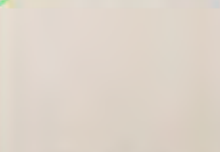
Prime Index "Pledge" 7503E



Carried Away 1882



Warwagon D502



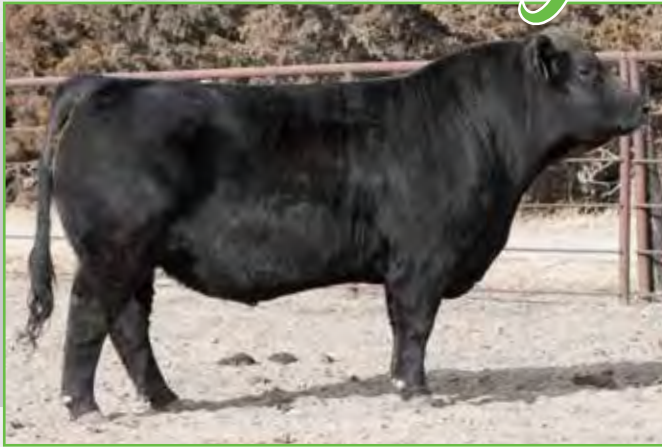
RENO 124H



"How to Scan a QR Code with iPhone"
Open your iPhone's Camera.
Point the camera at the QR code.
Make sure the QR code is centered on your iPhone's screen.
Wait for the code to scan.
Open the QR code's content.

LOT QR Codes will be updated with each Lot Video once available.

Yearling Balancer Bulls



Sire

DJS HOWARD 101H AMG1494112

| CED | BW | WW | YW | MLK | TM | CREA | MARB | FPI |
|-----|-----|----|-----|-----|----|------|------|-------|
| 6 | 3.0 | 72 | 104 | 22 | 58 | 0.54 | 0.08 | 68.62 |

Howard is an up and coming superstar. His Dam 489B is phenomenal, sporting a great udder, sharp front end, big ribs, and heavy rear quarter. Howard moves like a cat, he is big topped, deep sided, and heavily muscled. His daughters look great. He is definitely one of the best ever raised on the ranch. Howard also sired the champion balancer heifer at the NILE in Billings Montana in the Fall of 2023.



Swanson
Cattle
Company

**BIG AND STOUT
A REAL STUD!**

1

DJS 140L



BULL • REG AMG1578408 • DOB 1/25/23 • TATTOO 140L

| MR RESOURCE 102E
HOWARD 101H
| LEE ANN

| OUTRIGHT 162A
688D
| 16W

S A V RESOURCE 1441
MS. GUNNISON 106R 3147A
12LW ET
LEE ANN 346Z
CONNEALY CONSENSUS 7229
GUNNISON 5151R
RITO 616 OF 4B20 6807
108T

| |
|---------------------|
| ACT BW |
| 87 |
| ADJ WW RATIO |
| 687 107 |



| CED | BW | WW | YW | MLK | TM | GEM | HP | PG30 |
|-----------|------------|--------------|------------|-------------|-------------|-------------|--------------|--------------|
| 10 | 0.4 | 68 | 100 | 27 | 61 | 5 | 4.78 | -0.89 |
| 90% | 70% | 65% | 80% | 15% | 40% | 80% | 60% | 90% |
| STAY | DOC | YG | CW | CREA | MARB | FAT | FPI | |
| 20 | 14 | -0.02 | 24 | 0.31 | 0.40 | 0.01 | 78.05 | |
| 2% | 10% | 75% | 85% | 90% | 40% | 80% | 70% | |

50% GV Balancer® • Homozygous Polled • Black



2

DJS 141L



BULL • REG AMGV1578409 • DOB 1/26/23 • TATTOO 141L

MR RESOURCE 102E
HOWARD 101H
LEE ANN

S A V RESOURCE 1441
MS. GUNNISON 106R 3147A
12LW ET
LEE ANN 346Z
TAU MR IN FOCUS 22Z
217X
GUNSLINGER 19U
92T

ACT BW
85
ADJ WW RATIO
731 114



VEGAS 81B
817F
636D

| CED | BW | WW | YW | MLK | TM | CEM | HP | PG30 |
|------|-----|-------|-----|------|------|------|-------|------|
| 9 | 0.4 | 66 | 91 | 22 | 55 | 5 | 0.86 | 0.12 |
| 95% | 70% | 75% | 90% | 60% | 75% | 80% | 95% | 70% |
| STAY | DOC | YG | CW | CREA | MARB | FAT | FPI | |
| 22 | 11 | -0.11 | 22 | 0.50 | 0.33 | 0.00 | 74.34 | |
| 1% | 75% | 35% | 90% | 55% | 55% | 60% | 90% | |

63% GV Balancer® • Homozygous Polled • Homozygous Black
BIG HIP, BIG TOP, LONG SPINE, LOADS OF MUSCLE, FLESHING ABILITY



LOT 2

3

DJS 144L



BULL • REG AMGV1578411 • DOB 2/3/23 • TATTOO 144L

MR RESOURCE 102E
HOWARD 101H
LEE ANN

S A V RESOURCE 1441
MS. GUNNISON 106R 3147A
12LW ET
LEE ANN 346Z
TAU MR IN FOCUS 22Z
217X
OUTRIGHT 162A
91W

ACT BW
77
ADJ WW RATIO
678 106



VEGAS 81B
839F
649D

| CED | BW | WW | YW | MLK | TM | CEM | HP | PG30 |
|------|------|-------|-----|------|------|------|-------|-------|
| 13 | -1.6 | 68 | 101 | 22 | 56 | 7 | 3.42 | -0.33 |
| 50% | 25% | 65% | 75% | 60% | 70% | 45% | 85% | 70% |
| STAY | DOC | YG | CW | CREA | MARB | FAT | FPI | |
| 13 | 12 | -0.05 | 36 | 0.51 | 0.31 | 0.00 | 78.89 | |
| 70% | 50% | 60% | 50% | 55% | 60% | 60% | 65% | |

50% GV Balancer® • Homozygous Polled • Black
DEEP SIDED, BIG TOPPED, LOTS OF MUSCLE



LOT 3

4

DJS 142L



BULL • REG AMGV1578410 • DOB 1/27/23 • TATTOO 142L

MR RESOURCE 102E
HOWARD 101H
LEE ANN

S A V RESOURCE 1441
MS. GUNNISON 106R 3147A
12LW ET
LEE ANN 346Z
BGGR GRAVITY 803A
MS LOOKOUT 930W
CK MAVERICK 850N
L B D R MONTANA 8043 DV

ACT BW
96
ADJ WW RATIO
643 100



BGGR COHESION 5153C
756E
167S

| CED | BW | WW | YW | MLK | TM | CEM | HP | PG30 |
|------|------|-------|-----|------|------|-------|-------|------|
| 7 | 2.6 | 71 | 104 | 20 | 55 | 3 | 4.24 | 1.11 |
| >95% | >95% | 55% | 70% | 75% | 75% | >95% | 70% | 40% |
| STAY | DOC | YG | CW | CREA | MARB | FAT | FPI | |
| 18 | 12 | -0.17 | 26 | 0.52 | 0.35 | -0.03 | 75.46 | |
| 10% | 50% | 15% | 80% | 50% | 50% | 10% | 85% | |

50% GV Balancer® • Homozygous Polled • Black



LOT 4



YEARLING BALANCER BULLS



LOT 5

5

DJS 146L



BULL • REG AMGV1578413 • DOB 2/9/23 • TATTOO 146L

MR RESOURCE 102E
HOWARD 101H
LEE ANN

OUTRIGHT 162A
663D
183Z

S A V RESOURCE 1441
MS. GUNNISON 106R 3147A
12LW ET
LEE ANN 346Z
CONNEALY CONSENSUS 7229
GUNNISON 5151R
GUNSLINGER 19U
T J BANDY ERICA 839

| | |
|---------------------|---------|
| ACT BW | 93 |
| ADJ WW RATIO | 692 108 |



| CED | BW | WW | YW | MLK | TM | CEM | HP | PG30 |
|------|-----|------|-----|------|------|-------|-------|-------|
| 9 | 2.2 | 72 | 109 | 21 | 57 | 5 | 4.44 | -1.49 |
| 95% | 95% | 50% | 55% | 70% | 65% | 80% | 70% | 90% |
| STAY | DOC | YG | CW | CREA | MARB | FAT | FPI | |
| 17 | 12 | 0.01 | 32 | 0.23 | 0.34 | -0.01 | 75.90 | |
| 20% | 50% | 85% | 65% | 95% | 55% | 40% | 80% | |

50% GV Balancer® • Homozygous Polled • Black

6

DJS 148L



BULL • REG AMGV1578415 • DOB 2/10/23 • TATTOO 148L

MR RESOURCE 102E
HOWARD 101H
LEE ANN

EGL LIFELINE B101
728E
216X

S A V RESOURCE 1441
MS. GUNNISON 106R 3147A
12LW ET
LEE ANN 346Z
S A V FINAL ANSWER 0035
ESTELLE X014
LUDACRIS 039S ET
150U

| | |
|---------------------|---------|
| ACT BW | 96 |
| ADJ WW RATIO | 660 103 |



| CED | BW | WW | YW | MLK | TM | CEM | HP | PG30 |
|------|-----|-------|-----|------|------|-------|-------|------|
| 9 | 1.7 | 68 | 97 | 20 | 54 | 3 | 1.28 | 0.12 |
| 95% | 90% | 65% | 85% | 75% | 80% | >95% | 95% | 70% |
| STAY | DOC | YG | CW | CREA | MARB | FAT | FPI | |
| 12 | 12 | -0.09 | 41 | 0.54 | 0.00 | -0.02 | 65.96 | |
| 85% | 50% | 45% | 35% | 45% | >95% | 20% | >95% | |

50% GV Balancer® • Homozygous Polled • Homozygous Black

7

DJS 152L



BULL • REG AMGV1578419 • DOB 2/18/23 • TATTOO 152L

MR RESOURCE 102E
HOWARD 101H
LEE ANN

TAU MR IN FOCUS 22Z
578C
210W

S A V RESOURCE 1441
MS. GUNNISON 106R 3147A
12LW ET
LEE ANN 346Z
MYTTY IN FOCUS
MS GUNNISON 028X
LUDACRIS 039S ET
314E

| | |
|---------------------|---------|
| ACT BW | 94 |
| ADJ WW RATIO | 675 101 |



| CED | BW | WW | YW | MLK | TM | CEM | HP | PG30 |
|------|-----|-------|------|------|------|-------|-------|------|
| 9 | 1.5 | 64 | 88 | 22 | 54 | 4 | 1.68 | 0.03 |
| 95% | 90% | 80% | 95% | 60% | 80% | 90% | 90% | 70% |
| STAY | DOC | YG | CW | CREA | MARB | FAT | FPI | |
| 14 | 11 | -0.20 | 14 | 0.50 | 0.27 | -0.02 | 71.18 | |
| 55% | 75% | 10% | >95% | 55% | 70% | 20% | 95% | |

50% GV Balancer® • Homozygous Polled • Black

8

DJS 147L



BULL • REG AMGV1578414 • DOB 2/9/23 • TATTOO 147L

MR RESOURCE 102E
HOWARD 101H
LEE ANN

COPPERHEAD 4109E
944G
509C

S A V RESOURCE 1441
MS. GUNNISON 106R 3147A
12LW ET
LEE ANN 346Z
COPPERFIELD ET
MS INDUSTRY
OUTRIGHT 162A
113

| | |
|---------------------|---------|
| ACT BW | 83 |
| ADJ WW RATIO | 655 102 |



| CED | BW | WW | YW | MLK | TM | CEM | HP | PG30 |
|------|-----|-------|-----|------|------|-------|-------|------|
| 9 | 2.2 | 72 | 106 | 23 | 59 | 4 | 3.18 | 0.17 |
| 95% | 95% | 50% | 65% | 50% | 50% | 90% | 85% | 70% |
| STAY | DOC | YG | CW | CREA | MARB | FAT | FPI | |
| 16 | 13 | -0.19 | 37 | 0.78 | 0.11 | -0.02 | 71.15 | |
| 30% | 25% | 10% | 45% | 10% | 95% | 20% | 95% | |

50% GV Balancer® • Homozygous Polled • Black

9

DJS 149L



BULL • REG AMGV1578416 • DOB 2/13/23 • TATTOO 149L

MR RESOURCE 102E
HOWARD 101H
LEE ANN

16Z
500C
163S

S A V RESOURCE 1441
MS. GUNNISON 106R 3147A
12LW ET
LEE ANN 346Z
GCC TOTAL RECALL 806T
179X
CK MAVERICK 850N
PLATTEMERE QUEENIE 600

| | |
|---------------------|--------|
| ACT BW | 83 |
| ADJ WW RATIO | 632 98 |



| CED | BW | WW | YW | MLK | TM | CEM | HP | PG30 |
|------|------|------|-----|------|------|------|-------|------|
| 10 | -0.3 | 65 | 93 | 21 | 53 | 4 | 3.29 | 0.47 |
| 90% | 55% | 80% | 90% | 70% | 85% | 90% | 85% | 70% |
| STAY | DOC | YG | CW | CREA | MARB | FAT | FPI | |
| 17 | 13 | 0.12 | 30 | 0.10 | 0.16 | 0.03 | 69.55 | |
| 20% | 25% | >95% | 70% | >95% | 90% | >95% | >95% | |

50% GV Balancer® • Homozygous Polled • Homozygous Black





LOT 11

10 **DJS 136L** **GGP**

BULL • REG AMGV1578405 • DOB 1/20/23 • TATTOO 136L

MR RESOURCE 102E
HOWARD 101H
LEE ANN

LUDACRIS 039S ET
733E ET
VELVET 912U ET

S A V RESOURCE 1441
MS. GUNNISON 106R 3147A
12LW ET
LEE ANN 346Z

G A R INTEGRITY
G565
B C MATRIX 4132
VELVET MOON 226M - ET

| | |
|---------------------|---------------|
| ACT BW | 94 |
| ADJ WW RATIO | 639 99 |

| CED | BW | WW | YW | MLK | TM | CEM | HP | PG30 |
|----------|------------|-----------|------------|-----------|-----------|----------|-------------|-------------|
| 8 | 1.8 | 70 | 106 | 18 | 52 | 3 | 0.46 | 1.20 |
| >95% | 90% | 60% | 65% | 90% | 85% | >95% | >95% | 40% |

| STAY | DOC | YG | CW | CREA | MARB | FAT | FPI |
|-----------|-----------|--------------|-----------|-------------|-------------|--------------|--------------|
| 17 | 12 | -0.25 | 20 | 0.49 | 0.31 | -0.06 | 75.12 |
| 20% | 50% | 3% | 95% | 55% | 60% | 1% | 85% |

50% GV Balancer® • Homozygous Polled • Homozygous Black

11 **DJS 111L** **GGP**

BULL • REG AMGV1564475 • DOB 1/16/23 • TATTOO 111L

MR RESOURCE 102E
HOWARD 101H
LEE ANN

MR CONCENSUS 383A ET
MAC MISS CONSENSUS 623D
MS GOOD NIGHT 223Z

S A V RESOURCE 1441
MS. GUNNISON 106R 3147A
12LW ET
LEE ANN 346Z

CONNEALY CONSENSUS 7229
LAZY TV MS FULLBACK L643
GOOD NIGHT 715T
MISS KRUGERRAND 023X

| | |
|---------------------|------------|
| ACT BW | 85 |
| ADJ WW RATIO | 647 |

| CED | BW | WW | YW | MLK | TM | CEM | HP | PG30 |
|-----------|------------|-----------|------------|-----------|-----------|----------|-------------|-------------|
| 11 | 2.1 | 73 | 107 | 22 | 58 | 6 | 3.54 | 0.84 |
| 80% | 95% | 45% | 60% | 60% | 55% | 65% | 70% | 40% |

| STAY | DOC | YG | CW | CREA | MARB | FAT | FPI |
|-----------|-----------|--------------|-----------|-------------|-------------|--------------|--------------|
| 18 | 13 | -0.07 | 38 | 0.45 | 0.31 | -0.02 | 76.96 |
| 10% | 25% | 55% | 45% | 65% | 60% | 20% | 75% |

50% GV Balancer® • Homozygous Polled • Homozygous Black

Lot 11 **THICK AND DEEP HERDSIRE,
EASY KEEPER FROM A TOP COW!**



YEARLING BALANCER BULLS



LOT 12

12

DJS 139L



BULL • REG AMGV1578407 • DOB 1/24/23 • TATTOO 139L

| MR RESOURCE 102E
HOWARD 101H
| LEE ANN

| BGGP COHESION 5153C
771E
| 164Y

S A V RESOURCE 1441
MS. GUNNISON 106R 3147A
12LW ET
LEE ANN 346Z

BGGP GRAVITY 803A
MS LOOKOUT 930W
GOOD BOY 201U
182T

| |
|---------------------|
| ACT BW |
| 92 |
| ADJ WW RATIO |
| 647 101 |



| CED | BW | WW | YW | MLK | TM | CEM | HP | PG30 |
|-----------|------------|-----------|-----------|-----------|-----------|----------|-------------|-------------|
| 10 | 1.6 | 66 | 90 | 22 | 54 | 4 | 2.64 | 1.27 |
| 90% | 90% | 75% | 95% | 60% | 80% | 90% | 85% | 40% |

| STAY | DOC | YG | CW | CREA | MARB | FAT | FPI |
|-----------|-----------|--------------|-----------|-------------|-------------|-------------|--------------|
| 16 | 12 | -0.10 | 18 | 0.44 | 0.20 | 0.00 | 69.66 |
| 30% | 50% | 40% | 95% | 65% | 85% | 60% | >95% |

50% GV Balancer® • Homozygous Polled • Black

13

DJS 138L



BULL • REG AMGV1578406 • DOB 1/22/23 • TATTOO 138L

| MR RESOURCE 102E
HOWARD 101H
| LEE ANN

| VEGAS 81B
818F
| 666D

S A V RESOURCE 1441
MS. GUNNISON 106R 3147A
12LW ET
LEE ANN 346Z

TAU MR IN FOCUS 22Z
217X
OUTRIGHT 162A
184Y

| |
|---------------------|
| ACT BW |
| 96 |
| ADJ WW RATIO |
| 611 95 |



| CED | BW | WW | YW | MLK | TM | CEM | HP | PG30 |
|----------|------------|-----------|------------|-----------|-----------|----------|-------------|-------------|
| 9 | 0.6 | 66 | 101 | 22 | 55 | 4 | 2.78 | 0.15 |
| 95% | 75% | 75% | 75% | 60% | 75% | 90% | 85% | 70% |

| STAY | DOC | YG | CW | CREA | MARB | FAT | FPI |
|-----------|-----------|--------------|-----------|-------------|-------------|--------------|--------------|
| 19 | 11 | -0.07 | 38 | 0.50 | 0.16 | -0.01 | 70.59 |
| 5% | 75% | 55% | 45% | 55% | 90% | 40% | >95% |

50% GV Balancer® • Homozygous Polled • Black

Lot 12

**REALLY LONG BULL WITH
LOTS OF MUSCLE!**



14

DJS 145L



BULL • REG AMGV1578412 • DOB 2/6/23 • TATTOO 145L

MR RESOURCE 102E
HOWARD 101H
LEE ANN

S A V RESOURCE 1441
MS. GUNNISON 106R 3147A
12LW ET
LEE ANN 346Z
GUNSLINGER 19U
MISS 004-76T
GOOD BOY 201U
92N

ACT BW
75
ADJ WW RATIO
615 96



DERRINGER 96X
333A
163YET

| CED | BW | WW | YW | MLK | TM | CEM | HP | PG30 |
|-----|------|------|------|-----|------|-----|------|------|
| 12 | -1.2 | 48 | 64 | 23 | 47 | 6 | 0.51 | 0.19 |
| 65% | 35% | >95% | >95% | 50% | >95% | 65% | 95% | 70% |

| STAY | DOC | YG | CW | CREA | MARB | FAT | FPI |
|------|-----|-------|-----|------|-------|-------|-------|
| 16 | 11 | -0.17 | 21 | 0.48 | -0.05 | -0.03 | 57.23 |
| 30% | 75% | 15% | 90% | 60% | >95% | 10% | >95% |

50% GV Balancer® • Homozygous Polled • Homozygous Black

15

DJS 122L



BULL • REG AMGV1578400 • DOB 1/12/23 • TATTOO 122L

MR RESOURCE 102E
HOWARD 101H
LEE ANN

S A V RESOURCE 1441
MS. GUNNISON 106R 3147A
12LW ET
LEE ANN 346Z
BGGR GRAVITY 803A
MS LOOKOUT 930W
S A V FINAL ANSWER 0035
112U ET

ACT BW
85
ADJ WW RATIO
609 95



BGGR COHESION 5153C
800F
307A

| CED | BW | WW | YW | MLK | TM | CEM | HP | PG30 |
|-----|-----|-----|-----|-----|-----|-----|------|------|
| 10 | 0.1 | 68 | 101 | 18 | 52 | 4 | 2.12 | 1.50 |
| 90% | 65% | 65% | 75% | 90% | 85% | 90% | 90% | 15% |

| STAY | DOC | YG | CW | CREA | MARB | FAT | FPI |
|------|-----|-------|-----|------|------|------|-------|
| 15 | 12 | -0.01 | 26 | 0.31 | 0.36 | 0.01 | 76.84 |
| 40% | 50% | 80% | 80% | 90% | 50% | 80% | 80% |

50% GV Balancer® • Homozygous Polled • Homozygous Black
SOGGY AND SOUND, MODERATE, A GRANDSON OF 307A DONOR

16

DJS 150L



BULL • REG AMGV1578417 • DOB 2/13/23 • TATTOO 150L

MR RESOURCE 102E
HOWARD 101H
LEE ANN

S A V RESOURCE 1441
MS. GUNNISON 106R 3147A
12LW ET
LEE ANN 346Z
DAVIDSON BAMFORD 36A
DAVIDSON MS MAMBO 16W
BALDRIDGE WAYLON W34
SMITH LADY 689

ACT BW
87
ADJ WW RATIO
699 109



DVE WOODROW 121D
956G
MS SCC WAYLON 307B

| CED | BW | WW | YW | MLK | TM | CEM | HP | PG30 |
|------|-----|-----|-----|-----|-----|-----|------|-------|
| 8 | 0.6 | 74 | 111 | 23 | 61 | 4 | 3.44 | -0.52 |
| >95% | 75% | 40% | 50% | 50% | 40% | 90% | 85% | 90% |

| STAY | DOC | YG | CW | CREA | MARB | FAT | FPI |
|------|-----|-------|-----|------|------|-------|-------|
| 12 | 11 | -0.16 | 32 | 0.60 | 0.28 | -0.03 | 78.54 |
| 85% | 75% | 20% | 65% | 35% | 70% | 10% | 70% |

50% GV Balancer® • Homozygous Polled • Black

17

DJS 155L



BULL • REG AMGV1588188 • DOB 2/21/23 • TATTOO 155L

MR RESOURCE 102E
HOWARD 101H
LEE ANN

S A V RESOURCE 1441
MS. GUNNISON 106R 3147A
12LW ET
LEE ANN 346Z
CONNELLY CONSENSUS 7229
GUNNISON 5151R
TAU MR IN FOCUS 22Z
246Z

ACT BW
95
ADJ WW RATIO
685 107



OUTRIGHT 162A
642D
420B

| CED | BW | WW | YW | MLK | TM | CEM | HP | PG30 |
|------|-----|-----|-----|-----|-----|-----|------|-------|
| 8 | 2.4 | 72 | 112 | 23 | 58 | 4 | 4.10 | -0.96 |
| >95% | 95% | 50% | 50% | 50% | 55% | 90% | 70% | 90% |

| STAY | DOC | YG | CW | CREA | MARB | FAT | FPI |
|------|-----|-------|-----|------|------|-------|-------|
| 15 | 13 | -0.11 | 39 | 0.59 | 0.35 | -0.02 | 76.70 |
| 40% | 25% | 35% | 40% | 35% | 50% | 20% | 80% |

50% GV Balancer® • Homozygous Polled • Black

18

DJS 118L



BULL • REG AMGV1578399 • DOB 1/9/23 • TATTOO 118L

MR RESOURCE 102E
HOWARD 101H
LEE ANN

S A V RESOURCE 1441
MS. GUNNISON 106R 3147A
12LW ET
LEE ANN 346Z
MYTTY IN FOCUS
MS GUNNISON 028X
LUDACRIS 039S ET
320S

ACT BW
87
ADJ WW RATIO
611 95



TAU MR IN FOCUS 22Z
660D
24W

| CED | BW | WW | YW | MLK | TM | CEM | HP | PG30 |
|-----|------|-----|-----|-----|-----|-----|------|------|
| 10 | -1.6 | 62 | 90 | 20 | 51 | 6 | 2.09 | 0.04 |
| 90% | 25% | 90% | 95% | 75% | 90% | 65% | 90% | 70% |

| STAY | DOC | YG | CW | CREA | MARB | FAT | FPI |
|------|-----|------|-----|------|------|-------|-------|
| 15 | 12 | 0.02 | 25 | 0.06 | 0.39 | -0.01 | 75.75 |
| 40% | 50% | 85% | 85% | >95% | 40% | 40% | 85% |

50% GV Balancer® • Homozygous Polled • Black

19

DJS 131L



BULL • REG AMGV1578401 • DOB 1/16/23 • TATTOO 131L

MR RESOURCE 102E
HOWARD 101H
LEE ANN

S A V RESOURCE 1441
MS. GUNNISON 106R 3147A
12LW ET
LEE ANN 346Z
S A V FINAL ANSWER 0035
ESTELLE X014
GUNSLINGER 19U
PLATTEMERE QUEENIE 647

ACT BW
79
ADJ WW RATIO
601 94



EGL LIFELINE B101
722E
211Y

| CED | BW | WW | YW | MLK | TM | CEM | HP | PG30 |
|-----|------|-----|------|-----|-----|-----|------|-------|
| 12 | -1.0 | 57 | 80 | 20 | 49 | 5 | 3.49 | -0.40 |
| 65% | 35% | 95% | >95% | 75% | 95% | 80% | 85% | 70% |

| STAY | DOC | YG | CW | CREA | MARB | FAT | FPI |
|------|-----|-------|-----|------|------|-------|-------|
| 16 | 13 | -0.23 | 20 | 0.47 | 0.09 | -0.05 | 65.98 |
| 30% | 25% | 4% | 95% | 60% | >95% | 1% | >95% |

50% GV Balancer® • Homozygous Polled • Homozygous Black



YEARLING BALANCER BULLS

20

DJS 132L



BULL • REG AMGV1578402 • DOB 1/16/23 • TATTOO 132L

MR RESOURCE 102E
HOWARD 101H
LEE ANN

S A V RESOURCE 1441
MS. GUNNISON 106R 3147A
12LW ET
LEE ANN 346Z

| ACT BW |
|--------------|
| 81 |
| ADJ WW RATIO |
| 604 94 |

BAR S COWTOWN 2903
804F
164Y

B C LOOKOUT 7024
BAR S BLACKCAP 9902
GOOD BOY 201U
182T



| CED | BW | WW | YW | MLK | TM | CEM | HP | PG30 |
|------|-----|------|-----|------|------|------|-------|------|
| 14 | 0.2 | 68 | 97 | 23 | 58 | 7 | 3.36 | 1.04 |
| 35% | 65% | 65% | 85% | 50% | 55% | 45% | 85% | 40% |
| STAY | DOC | YG | CW | CREA | MARB | FAT | FPI | |
| 14 | 12 | 0.07 | 35 | 0.19 | 0.42 | 0.01 | 79.09 | |
| 55% | 50% | 95% | 55% | >95% | 35% | 80% | 65% | |

38% GV Balancer® • Homozygous Polled • Black



LOT 22

21

DJS 133L



BULL • REG AMGV1578403 • DOB 1/16/23 • TATTOO 133L

MR RESOURCE 102E
HOWARD 101H
LEE ANN

S A V RESOURCE 1441
MS. GUNNISON 106R 3147A
12LW ET
LEE ANN 346Z

| ACT BW |
|--------------|
| 89 |
| ADJ WW RATIO |
| 602 94 |

BAR S COWTOWN 2903
826F
134W

B C LOOKOUT 7024
BAR S BLACKCAP 9902
LUDACRIS 039S ET
79S



| CED | BW | WW | YW | MLK | TM | CEM | HP | PG30 |
|------|-----|------|------|------|------|------|-------|------|
| 9 | 0.6 | 64 | 99 | 20 | 52 | 4 | 3.60 | 0.98 |
| 95% | 75% | 80% | 80% | 75% | 85% | 90% | 70% | 40% |
| STAY | DOC | YG | CW | CREA | MARB | FAT | FPI | |
| 15 | 14 | 0.03 | 13 | 0.08 | 0.23 | 0.01 | 70.32 | |
| 40% | 10% | 90% | >95% | >95% | 80% | 80% | >95% | |

38% GV Balancer® • Homozygous Polled • Homozygous Black

22

DJS 153L



BULL • REG AMGV1578420 • DOB 2/20/23 • TATTOO 153L

MR RESOURCE 102E
HOWARD 101H
LEE ANN

S A V RESOURCE 1441
MS. GUNNISON 106R 3147A
12LW ET
LEE ANN 346Z

| ACT BW |
|--------------|
| 95 |
| ADJ WW RATIO |
| 676 101 |

TAU MR IN FOCUS 22Z
529CET
VELVET 912U ET

MYTTY IN FOCUS
MS GUNNISON 028X
B C MATRIX 4132
VELVET MOON 226M - ET



| CED | BW | WW | YW | MLK | TM | CEM | HP | PG30 |
|------|------|-------|-----|------|------|-------|-------|------|
| 8 | 3.1 | 80 | 121 | 22 | 62 | 3 | 2.94 | 0.91 |
| >95% | >95% | 20% | 30% | 60% | 35% | >95% | 85% | 40% |
| STAY | DOC | YG | CW | CREA | MARB | FAT | FPI | |
| 17 | 12 | -0.21 | 40 | 0.71 | 0.05 | -0.05 | 73.88 | |
| 20% | 50% | 10% | 35% | 15% | >95% | 1% | 90% | |

50% GV Balancer® • Homozygous Polled • Red

23

DJS 126L



BULL • REG AMGV1578447 • DOB 1/13/23 • TATTOO 126L

MR RESOURCE 102E
HOWARD 101H
LEE ANN

S A V RESOURCE 1441
MS. GUNNISON 106R 3147A
12LW ET
LEE ANN 346Z

| ACT BW |
|--------------|
| 92 |
| ADJ WW RATIO |
| 589 92 |

16Z
576C
159X

GCC TOTAL RECALL 806T
179X
GUNSLINGER 19U
216M



| CED | BW | WW | YW | MLK | TM | CEM | HP | PG30 |
|------|------|-------|-----|------|------|-------|-------|------|
| 8 | 4.2 | 74 | 112 | 16 | 53 | 4 | 2.79 | 0.32 |
| >95% | >95% | 40% | 50% | 95% | 85% | 90% | 85% | 70% |
| STAY | DOC | YG | CW | CREA | MARB | FAT | FPI | |
| 17 | 13 | -0.02 | 48 | 0.40 | 0.14 | -0.02 | 69.23 | |
| 20% | 25% | 75% | 15% | 75% | 95% | 20% | >95% | |

50% GV Balancer® • Heterozygous Polled • Homozygous Black



LOT 23



24

DJS 3116L



BULL • REG AMGV1590810 • DOB 1/26/23 • TATTOO 3116L

| MR RESOURCE 102E
HOWARD 101H
| LEE ANN

| LD CAPITALIST 316
MS SCC CAP 316 0116
| MS SCC TOP GAME 858

S A V RESOURCE 1441
MS. GUNNISON 106R 3147A
12LW ET
LEE ANN 346Z
CONNEALY CAPITALIST 028
LD DIXIE ERICA 2053
SITZ TOP GAME 561X
MS SCC LAST CALL 256Z

ACT BW
88
ADJ WW RATIO
651 101



| CED | BW | WW | YW | MLK | TM | CEM | HP | PG30 |
|-----------|------------|--------------|------------|-------------|-------------|-------------|--------------|-------------|
| 11 | 0.6 | 77 | 119 | 26 | 66 | 6 | 1.12 | 0.72 |
| 80% | 75% | 30% | 35% | 25% | 15% | 65% | 95% | 40% |
| STAY | DOC | YG | CW | CREA | MARB | FAT | FPI | |
| 16 | 13 | -0.01 | 44 | 0.53 | 0.33 | 0.01 | 82.11 | |
| 30% | 25% | 75% | 25% | 50% | 55% | 80% | 50% | |

28% GV Balancer® • Homozygous Polled • Black



Newsflash Sons



LOT 25



NEWS FLASH 8710H AMGV1521114

| CED | BW | WW | YW | MLK | TM | CREA | MARB | FPI |
|-----------|-------------|-----------|------------|-----------|-----------|-------------|-------------|--------------|
| 18 | -3.3 | 74 | 112 | 20 | 56 | 0.40 | 0.55 | 91.07 |

Easy calving and good numbers from birth weight to performance to carcass. This bull is very sound structured and we are looking forward to calving his daughters.

25

DJS 130L



BULL • REG AMGV1578451 • DOB 1/16/23 • TATTOO 130L

| FOX NEWS 020F
NEWS FLASH 8710H
| MS MATRON 8710F

| OUTRIGHT 162A
509C
| 113

COPPERFIELD ET
MISS TENDERLOIN 020X
DURANT 6296D
MS MATRON 6621D
CONNEALY CONSENSUS 7229
GUNNISON 5151R

ACT BW
85
ADJ WW RATIO
705 110



| CED | BW | WW | YW | MLK | TM | CEM | HP | PG30 |
|-----------|------------|-------------|------------|-------------|-------------|-------------|--------------|-------------|
| 14 | 0.1 | 82 | 138 | 25 | 66 | 8 | 5.54 | 0.47 |
| 35% | 65% | 15% | 10% | 30% | 15% | 30% | 45% | 70% |
| STAY | DOC | YG | CW | CREA | MARB | FAT | FPI | |
| 11 | 10 | 0.01 | 53 | 0.61 | 0.42 | 0.01 | 89.56 | |
| 90% | 90% | 85% | 10% | 30% | 35% | 80% | 15% | |

50% GV Balancer® • Homozygous Polled • Homozygous Black

26

DJS 143L



BULL • REG AMGV1578661 • DOB 2/3/23 • TATTOO 143L

| FOX NEWS 020F
NEWS FLASH 8710H
| MS MATRON 8710F

| LSF SRR PRIME INDEX 7503E
1DJS 185J
| LSF SRR JOAN 241 D6554

COPPERFIELD ET
MISS TENDERLOIN 020X
DURANT 6296D
MS MATRON 6621D
LEACHMAN PLEDGE A282Z
BROWN MS P707 X7583
LSF SRR VICTORY 3013A
SRR JOAN 241-0190

ACT BW
77
ADJ WW RATIO
745 116



| CED | BW | WW | YW | MLK | TM | CEM | HP | PG30 |
|-----------|-------------|-------------|------------|-------------|-------------|-------------|--------------|-------------|
| 16 | -2.4 | 71 | 109 | 21 | 56 | 10 | 3.50 | 1.11 |
| 15% | 15% | 50% | 50% | 70% | 65% | 5% | 75% | 40% |
| STAY | DOC | YG | CW | CREA | MARB | FAT | FPI | |
| 22 | 12 | 0.05 | 31 | 0.35 | 0.45 | 0.03 | 85.54 | |
| 1% | 50% | 95% | 55% | 90% | 20% | >95% | 25% | |

25% GV Balancer® • Homozygous Polled • Homozygous Black
BIG AND POWERFUL HEADLINER



YEARLING BALANCER BULLS



LOT 27

27

DJS 119L



BULL • REG AMGV1578440 • DOB 1/9/23 • TATTOO 119L

| FOX NEWS 020F
NEWS FLASH 8710H
| MS MATRON 8710F

| SLC FRONTIER 21B
748E
| 478B

COPPERFIELD ET
MISS TENDERLOIN 020X
DURANT 6296D
MS MATRON 6621D
BAR-E-L UNEQUALLED 64Z
DALLAS 195P
16Z
204N

ACT BW
94
ADJ WW RATIO
639 99



| CED | BW | WW | YW | MLK | TM | CEM | HP | PG30 |
|-----------|------------|-----------|------------|-----------|-----------|----------|-------------|-------------|
| 12 | 1.0 | 74 | 111 | 18 | 55 | 6 | 3.91 | 2.01 |
| 60% | 80% | 35% | 45% | 90% | 70% | 60% | 75% | 20% |

| STAY | DOC | YG | CW | CREA | MARB | FAT | FPI |
|-----------|-----------|--------------|-----------|-------------|-------------|-------------|--------------|
| 14 | 13 | -0.03 | 30 | 0.36 | 0.35 | 0.00 | 79.51 |
| 60% | 25% | 80% | 60% | 85% | 40% | 75% | 50% |

50% GV Balancer® • Homozygous Polled • Homozygous Black



LOT 28

28

DJS 125L



BULL • REG AMGV1578445 • DOB 1/13/23 • TATTOO 125L

| FOX NEWS 020F
NEWS FLASH 8710H
| MS MATRON 8710F

| VEGAS 81B
035H
| 808F

COPPERFIELD ET
MISS TENDERLOIN 020X
DURANT 6296D
MS MATRON 6621D
TAU MR IN FOCUS 22Z
217X
EGL LIFELINE B101
402B

ACT BW
84
ADJ WW RATIO
659 103



| CED | BW | WW | YW | MLK | TM | CEM | HP | PG30 |
|-----------|-------------|-----------|------------|-----------|-----------|----------|-------------|-------------|
| 16 | -1.1 | 74 | 114 | 20 | 57 | 9 | 5.15 | 1.26 |
| 15% | 35% | 40% | 45% | 75% | 65% | 15% | 60% | 40% |

| STAY | DOC | YG | CW | CREA | MARB | FAT | FPI |
|-----------|-----------|-------------|-----------|-------------|-------------|-------------|--------------|
| 15 | 10 | 0.06 | 35 | 0.37 | 0.68 | 0.03 | 91.42 |
| 40% | 90% | 95% | 55% | 80% | 4% | >95% | 10% |

50% GV Balancer® • Homozygous Polled • Homozygous Black

GROWTH AND MARBLING

29

DJS 124L



BULL • REG AMGV1578444 • DOB 1/13/23 • TATTOO 124L

| FOX NEWS 020F
NEWS FLASH 8710H
| MS MATRON 8710F

| COPPERHEAD 4109E
012H
| AHL MUFFIN 304A

COPPERFIELD ET
MISS TENDERLOIN 020X
DURANT 6296D
MS MATRON 6621D

COPPERFIELD ET
MS INDUSTRY
DERRINGER 96X
MUFFIN 905W

ACT BW
75
ADJ WW RATIO
608 95



| CED | BW | WW | YW | MLK | TM | CEM | HP | PG30 |
|-----------|-------------|-----------|------------|-----------|-----------|-----------|-------------|-------------|
| 17 | -2.3 | 73 | 112 | 21 | 57 | 10 | 4.93 | 2.09 |
| 10% | 15% | 45% | 50% | 70% | 65% | 10% | 60% | 15% |

| STAY | DOC | YG | CW | CREA | MARB | FAT | FPI |
|-----------|----------|-------------|-----------|-------------|-------------|-------------|--------------|
| 15 | 9 | 0.09 | 42 | 0.49 | 0.22 | 0.04 | 81.07 |
| 40% | 95% | >95% | 30% | 55% | 80% | >95% | 55% |

38% GV Balancer® • Homozygous Polled • Homozygous Black
HEIFER BULL

30

DJS 117L



BULL • REG AMGV1578439 • DOB 1/9/23 • TATTOO 117L

| FOX NEWS 020F
NEWS FLASH 8710H
| MS MATRON 8710F

| BLACK GOLD PAYLOAD 9117G
113J
| 781E

COPPERFIELD ET
MISS TENDERLOIN 020X
DURANT 6296D
MS MATRON 6621D

BGGR BLK GOLD PAYLOAD 615Z
MS WATCHMAN W021 5209B
EGL LIFELINE B101
724T

ACT BW
75
ADJ WW RATIO
646 101



| CED | BW | WW | YW | MLK | TM | CEM | HP | PG30 |
|-----------|-------------|-----------|------------|-----------|-----------|----------|-------------|-------------|
| 16 | -1.2 | 77 | 118 | 19 | 58 | 9 | 3.95 | 2.79 |
| 15% | 35% | 30% | 35% | 85% | 55% | 15% | 70% | 5% |

| STAY | DOC | YG | CW | CREA | MARB | FAT | FPI |
|-----------|-----------|-------------|-----------|-------------|-------------|-------------|--------------|
| 13 | 11 | 0.14 | 39 | 0.28 | 0.38 | 0.04 | 85.63 |
| 70% | 75% | >95% | 40% | 90% | 45% | >95% | 30% |

50% GV Balancer® • Homozygous Polled • Homozygous Black
HIGH PERFORMING AND CALVING EASE



31

DJS 116L



BULL • REG AMGV1578438 • DOB 1/7/23 • TATTOO 116L

| FOX NEWS 020F
NEWS FLASH 8710H
| MS MATRON 8710F

| EGL LIFELINE B101
0192H ET
| 307A

COPPERFIELD ET
MISS TENDERLOIN 020X
DURANT 6296D
MS MATRON 6621D
S A V FINAL ANSWER 0035
ESTELLE X014
S A V FINAL ANSWER 0035
112U ET

ACT BW
79
ADJ WW RATIO
642 100



| CED | BW | WW | YW | MLK | TM | CEM | HP | PG30 |
|-----|------|-----|-----|-----|-----|-----|------|------|
| 17 | -1.4 | 75 | 118 | 19 | 56 | 9 | 4.98 | 1.66 |
| 10% | 30% | 35% | 35% | 85% | 70% | 15% | 60% | 15% |

| STAY | DOC | YG | CW | CREA | MARB | FAT | FPI |
|------|-----|------|-----|------|------|------|-------|
| 12 | 11 | 0.04 | 35 | 0.55 | 0.35 | 0.04 | 84.68 |
| 85% | 75% | 90% | 55% | 45% | 50% | >95% | 35% |

38% GV Balancer® • Homozygous Polled • Homozygous Black

EASY CALVING AND FAST GROWING



LOT 31

32

DJS 114L



BULL • REG AMGV1578660 • DOB 1/5/23 • TATTOO 114L

| FOX NEWS 020F
NEWS FLASH 8710H
| MS MATRON 8710F

| BAR S COWTOWN 2903
SCC MS COWTOWN 554C
| LADY HANS ALBERDA 8114

COPPERFIELD ET
MISS TENDERLOIN 020X
DURANT 6296D
MS MATRON 6621D
B C LOOKOUT 7024
BAR S BLACKCAP 9902
HANS ALBERDA 615
LADY HANS CLASSIC 504

ACT BW
81
ADJ WW RATIO
579 90



| CED | BW | WW | YW | MLK | TM | CEM | HP | PG30 |
|-----|------|-----|-----|-----|-----|-----|------|------|
| 17 | -1.5 | 63 | 104 | 21 | 53 | 10 | 4.80 | 2.45 |
| 10% | 25% | 80% | 60% | 70% | 80% | 5% | 60% | 20% |

| STAY | DOC | YG | CW | CREA | MARB | FAT | FPI |
|------|-----|------|-----|------|------|------|-------|
| 17 | 11 | 0.12 | 25 | 0.10 | 0.56 | 0.04 | 82.97 |
| 20% | 70% | >95% | 75% | >95% | 10% | >95% | 35% |

25% GV Balancer® • Homozygous Polled • Homozygous Black

33

DJS 113L



BULL • REG AMGV1578435 • DOB 1/3/23 • TATTOO 113L

| FOX NEWS 020F
NEWS FLASH 8710H
| MS MATRON 8710F

| TAU LIGHTYEAR 111F
0189H
| MS SCC FINAL ANSWER 315

COPPERFIELD ET
MISS TENDERLOIN 020X
DURANT 6296D
MS MATRON 6621D
INFINITY 47C
MS GUNNISON 3088A
S A V FINAL ANSWER 0035
SMITH JASMAN 6181

ACT BW
69
ADJ WW RATIO
648 101



| CED | BW | WW | YW | MLK | TM | CEM | HP | PG30 |
|-----|------|-----|-----|-----|-----|-----|------|------|
| 18 | -1.9 | 75 | 117 | 23 | 61 | 11 | 6.84 | 2.14 |
| 5% | 20% | 35% | 35% | 50% | 40% | 3% | 35% | 15% |

| STAY | DOC | YG | CW | CREA | MARB | FAT | FPI |
|------|-----|------|-----|------|------|------|-------|
| 14 | 12 | 0.05 | 48 | 0.54 | 0.57 | 0.03 | 91.58 |
| 55% | 50% | 95% | 15% | 45% | 15% | >95% | 10% |

38% GV Balancer® • Homozygous Polled • Homozygous Black

HEIFER BULL WITH LOTS OF MARBLING

34

DJS 112L



BULL • REG AMGV1578434 • DOB 1/2/23 • TATTOO 112L

| FOX NEWS 020F
NEWS FLASH 8710H
| MS MATRON 8710F

| TAU LIGHTYEAR 111F
0186H
| MCCURRY BLACKCAP 5018

COPPERFIELD ET
MISS TENDERLOIN 020X
DURANT 6296D
MS MATRON 6621D
INFINITY 47C
MS GUNNISON 3088A
BC PURE CLASS 413A
MCCURRY BLACKCAP 3032

ACT BW
70
ADJ WW RATIO
615 96



| CED | BW | WW | YW | MLK | TM | CEM | HP | PG30 |
|-----|------|-----|-----|-----|-----|-----|------|------|
| 18 | -1.8 | 73 | 109 | 22 | 58 | 10 | 6.62 | 2.49 |
| 5% | 25% | 45% | 55% | 60% | 55% | 10% | 35% | 15% |

| STAY | DOC | YG | CW | CREA | MARB | FAT | FPI |
|------|-----|------|-----|------|------|------|-------|
| 18 | 12 | 0.06 | 25 | 0.36 | 0.69 | 0.04 | 92.54 |
| 10% | 50% | 95% | 85% | 80% | 4% | >95% | 10% |

38% GV Balancer® • Homozygous Polled • Homozygous Black



YEARLING BALANCER BULLS



Sire

DJS RIP 172G AMGV1494652

| CED | BW | WW | YW | MLK | TM | CREA | MARB | FPI |
|-----|-----|----|-----|-----|----|------|------|-------|
| 8 | 2.0 | 77 | 126 | 24 | 62 | 0.53 | 0.39 | 81.30 |

Rip is siring big performance cattle that are sound structured and attractive. The females have that broody look and the sons are powerful. The Rip bulls should sire fast growing feeder cattle or excellent females.



LOT 35

35

DJS 129L



BULL • REG AMGV1578450 • DOB 1/15/23 • TATTOO 129L

| COPPERHEAD 4109E
DJS RIP 172G
| 784E

| BAR S COWTOWN 2903
067H
| 827F

COPPERFIELD ET
MS INDUSTRY
MR CONSENSUS 21C ET
228W
B C LOOKOUT 7024
BAR S BLACKCAP 9902
BGR COHESION 5153C
MS SCC C28

| ACT BW |
|--------------|
| 79 |
| ADJ WW RATIO |
| 685 107 |



| CED | BW | WW | YW | MLK | TM | CEM | HP | PG30 |
|------|-----|------|-----|------|------|------|-------|------|
| 12 | 0.1 | 79 | 128 | 22 | 62 | 6 | 4.52 | 1.71 |
| 65% | 65% | 20% | 15% | 60% | 35% | 65% | 60% | 15% |
| STAY | DOC | YG | CW | CREA | MARB | FAT | FPI | |
| 13 | 11 | 0.07 | 53 | 0.51 | 0.53 | 0.02 | 89.06 | |
| 70% | 75% | 95% | 10% | 55% | 15% | 90% | 20% | |

25% GV Balancer® • Homozygous Polled • Homozygous Black
PERFORMANCE AND CARCASS

36

DJS 154L



BULL • REG AMGV1578454 • DOB 2/20/23 • TATTOO 154L

| COPPERHEAD 4109E
DJS RIP 172G
| 784E

| EARLY ENCOUNTER 536E
951G
| 4110B

COPPERFIELD ET
MS INDUSTRY
MR CONSENSUS 21C ET
228W
BASIN PAYWEIGHT 1682
MS SAM 536C
MR HAULER 12X ET
110W ET

| ACT BW |
|--------------|
| 90 |
| ADJ WW RATIO |
| 657 98 |



| CED | BW | WW | YW | MLK | TM | CEM | HP | PG30 |
|------|------|-------|-----|------|------|------|-------|------|
| 12 | 2.5 | 72 | 125 | 24 | 60 | 6 | 5.00 | 1.21 |
| 65% | >95% | 50% | 20% | 40% | 45% | 65% | 60% | 40% |
| STAY | DOC | YG | CW | CREA | MARB | FAT | FPI | |
| 17 | 11 | -0.09 | 44 | 0.70 | 0.49 | 0.00 | 82.55 | |
| 20% | 75% | 45% | 25% | 20% | 20% | 60% | 45% | |

50% GV Balancer® • Homozygous Polled • Homozygous Black
REALLY GOOD CARCASS AND GROWTH





LOT 37

37

DJS 3114L



BULL • REG AMGV1578446 • DOB 1/13/23 • TATTOO 3114L

COPPERHEAD 4109E
DJS RIP 172G
| 784E

COPPERFIELD ET
MS INDUSTRY
MR CONSENSUS 21C ET
228W

| |
|---------------------|
| ACT BW |
| 78 |
| ADJ WW RATIO |
| 641 100 |

TAU MR IN FOCUS 22Z
404B
| 30P

MYTTY IN FOCUS
MS GUNNISON 028X
POWER PAC 9070J
PLATTEMERE QUEENIE 647



| CED | BW | WW | YW | MLK | TM | CEM | HP | PG30 |
|-----|-----|-----|-----|-----|-----|-----|------|------|
| 10 | 0.6 | 71 | 114 | 22 | 57 | 5 | 2.81 | 0.01 |
| 90% | 75% | 55% | 45% | 60% | 65% | 80% | 85% | 70% |

| STAY | DOC | YG | CW | CREA | MARB | FAT | FPI |
|------|-----|-------|-----|------|------|-------|-------|
| 16 | 11 | -0.04 | 40 | 0.46 | 0.39 | -0.01 | 79.80 |
| 30% | 75% | 65% | 35% | 65% | 40% | 40% | 60% |

38% GV Balancer® • Homozygous Polled • Homozygous Black

38

DJS 123L



BULL • REG AMGV1578443 • DOB 1/12/23 • TATTOO 123L

COPPERHEAD 4109E
DJS RIP 172G
| 784E

COPPERFIELD ET
MS INDUSTRY
MR CONSENSUS 21C ET
228W

| |
|---------------------|
| ACT BW |
| 69 |
| ADJ WW RATIO |
| 617 96 |

SLC VIPER 7E
999G ET
| 307A

SLC VELOCITY 14C
SLC TOASTY 10C
S A V FINAL ANSWER 0035
112U ET



| CED | BW | WW | YW | MLK | TM | CEM | HP | PG30 |
|-----|------|------|-----|-----|-----|-----|------|------|
| 15 | -3.9 | 56 | 92 | 24 | 52 | 8 | 1.45 | 0.95 |
| 25% | 4% | >95% | 90% | 40% | 85% | 30% | 95% | 40% |

| STAY | DOC | YG | CW | CREA | MARB | FAT | FPI |
|------|-----|-------|-----|------|------|------|-------|
| 19 | 12 | -0.01 | 18 | 0.18 | 0.50 | 0.00 | 80.55 |
| 5% | 50% | 80% | 95% | >95% | 20% | 60% | 60% |

50% GV Balancer® • Homozygous Polled • Homozygous Black

39

DJS 127L



BULL • REG AMGV1578448 • DOB 1/14/23 • TATTOO 127L

COPPERHEAD 4109E
DJS RIP 172G
| 784E

COPPERFIELD ET
MS INDUSTRY
MR CONSENSUS 21C ET
228W

| |
|---------------------|
| ACT BW |
| 81 |
| ADJ WW RATIO |
| 619 96 |

VEGAS 81B
033H
| 802F

TAU MR IN FOCUS 22Z
217X
BASIN PAYWEIGHT 1682
153ZET



| CED | BW | WW | YW | MLK | TM | CEM | HP | PG30 |
|-----|-----|-----|-----|-----|-----|-----|------|------|
| 11 | 0.6 | 81 | 133 | 22 | 62 | 7 | 4.38 | 0.73 |
| 80% | 75% | 15% | 10% | 60% | 35% | 45% | 70% | 40% |

| STAY | DOC | YG | CW | CREA | MARB | FAT | FPI |
|------|-----|------|-----|------|------|------|-------|
| 17 | 9 | 0.04 | 49 | 0.39 | 0.48 | 0.00 | 88.34 |
| 20% | 95% | 90% | 15% | 75% | 25% | 60% | 20% |

38% GV Balancer® • Homozygous Polled • Homozygous Black



LOT 39



YEARLING BALANCER BULLS



Sire Frank Broadwater 1006 AAA 20196810

| CED | BW | WW | YW | MLK | MARB | RE | \$B | \$C |
|-----|-----|----|-----|-----|------|------|-----|-----|
| -2 | 2.0 | 70 | 117 | 24 | 0.62 | 0.75 | 145 | 263 |

Son of SAV Rainfall with hard to find muscle shape and substance. His foot EPD's are in the top 5% of the breed. We look forward to adding his daughters to our cow herd.



Swanson
Cattle
Company

**POWERFUL, ATTRACTIVE,
SOGGY, AND SOUND!**

40

DJS 135L

GGP

BULL • REG AMGV1578452 • DOB 1/20/23 • TATTOO 135L

| S A V RAINFALL 6846
FRANK BROADWATER 1006
| VISION BLANCHE 538

| 12LW ET
LEE ANN
| LEE ANN 346Z

COLEMAN CHARLO 0256
S A V BLACKCAP MAY 4136
BRUIN UPROAR 0070
VISION BLANCHE 864
| FOSTERS L017 ET
1222G ET
CONNEALY STIMULUS 8419
LEE ANN 121X

ACT BW
96
ADJ WW RATIO
631 98



| CED | BW | WW | YW | MLK | TM | CEM | HP | PG30 |
|-----------|-------------|-------------|------------|-------------|-------------|-------------|--------------|--------------|
| 11 | -1.1 | 76 | 116 | 23 | 61 | 6 | 4.75 | -1.24 |
| 80% | 35% | 30% | 40% | 50% | 40% | 65% | 60% | 90% |
| STAY | DOC | YG | CW | CREA | MARB | FAT | FPI | |
| 11 | 13 | 0.01 | 50 | 0.50 | 0.52 | 0.00 | 87.80 | |
| 90% | 25% | 85% | 15% | 55% | 20% | 60% | 25% | |

38% GV Balancer® • Homozygous Polled • Black



41

DJS 121L



BULL • REG AMGV1578442 • DOB 1/11/23 • TATTOO 121L

S A V RAINFALL 6846
FRANK BROADWATER 1006
 VISION BLANCHE 538

COLEMAN CHARLO 0256
 S A V BLACKCAP MAY 4136
 BRUIN UPROAR 0070
 VISION BLANCHE 864

ACT BW
 84
ADJ WW RATIO
 607 94

TAU MR IN FOCUS 22Z
465B
 206Z

MYTTY IN FOCUS
 MS GUNNISON 028X
 FRONT PAGE 765T
 200U



| CED | BW | WW | YW | MLK | TM | CEM | HP | PG30 |
|-----------|-------------|-------------|------------|-------------|-------------|-------------|--------------|--------------|
| 14 | -0.5 | 71 | 110 | 25 | 61 | 7 | 5.04 | -0.57 |
| 35% | 45% | 50% | 45% | 30% | 35% | 40% | 60% | 85% |
| STAY | DOC | YG | CW | CREA | MARB | FAT | FPI | |
| 16 | 10 | 0.04 | 41 | 0.48 | 0.57 | 0.02 | 86.28 | |
| 30% | 85% | 95% | 25% | 70% | 10% | 95% | 20% | |

25% GV Balancer® • Heterozygous Polled • Homozygous Black
 MODERATE FRAME, EXTREME DEPTH, AND FLESHING ABILITY



LOT 41

42

DJS 128L



BULL • REG AMGV1578449 • DOB 1/14/23 • TATTOO 128L

S A V RAINFALL 6846
FRANK BROADWATER 1006
 VISION BLANCHE 538

COLEMAN CHARLO 0256
 S A V BLACKCAP MAY 4136
 BRUIN UPROAR 0070
 VISION BLANCHE 864

ACT BW
 85
ADJ WW RATIO
 664 103

EGL LIFELINE B101
781E
 724T

S A V FINAL ANSWER 0035
 ESTELLE X014
 TITUS 880K
 TS BARBARA 1112



| CED | BW | WW | YW | MLK | TM | CEM | HP | PG30 |
|-----------|-------------|-------------|------------|-------------|-------------|-------------|--------------|--------------|
| 13 | -2.1 | 72 | 108 | 21 | 57 | 6 | 6.06 | -0.08 |
| 50% | 20% | 50% | 60% | 70% | 65% | 65% | 45% | 70% |
| STAY | DOC | YG | CW | CREA | MARB | FAT | FPI | |
| 12 | 14 | 0.09 | 41 | 0.19 | 0.46 | 0.01 | 84.96 | |
| 85% | 10% | >95% | 35% | >95% | 25% | 80% | 35% | |

25% GV Balancer® • Homozygous Polled • Homozygous Black
 BIG AND STOUT, BIG HIP, BIG MIDDLED, BIG TOP



LOT 42

**VIDEOS WILL BE AVAILABLE TWO WEEKS
 PRIOR TO THE SALE!**



YEARLING BALANCER BULLS



Sire

MR RESOURCE 102E AMGV1386209

| CED | BW | WW | YW | MLK | TM | CREA | MARB | FPI |
|-----|-----|----|-----|-----|----|------|------|-------|
| 4 | 3.5 | 72 | 114 | 22 | 58 | 0.66 | 0.25 | 72.55 |

Homozygous Polled • Homozygous Black

Resource is a performance bull with lots of marbling and top 10% SC, YG EPDs.

43

DJS 151L ET



BULL • REG AMGV1578418 • DOB 2/16/23 • TATTOO 151L

| S A V RESOURCE 1441
MR RESOURCE 102E
| MS. GUNNISON 106R 3147A

RITO 707 OF IDEAL 3407 7075
S A V BLACKCAP MAY 4136
GUNNISON 106R
MS SOLUTION 9140W
FOSTERS L017 ET
1222G ET
CONNEALY STIMULUS 8419
LEE ANN 121X

| ACT BW |
|--------------|
| 92 |
| ADJ WW RATIO |
| 625 |



| 12LW ET
LEE ANN
| LEE ANN 346Z

| CED | BW | WW | YW | MLK | TM | CEM | HP | PG30 |
|------|------|-------|------|------|------|-------|-------|------|
| 6 | 2.7 | 65 | 83 | 22 | 54 | 2 | 1.26 | 0.57 |
| >95% | >95% | 80% | >95% | 60% | 80% | >95% | 95% | 40% |
| STAY | DOC | YG | CW | CREA | MARB | FAT | FPI | |
| 13 | 14 | -0.27 | 28 | 0.76 | 0.21 | -0.04 | 67.37 | |
| 70% | 10% | 2% | 75% | 10% | 85% | 3% | >95% | |

63% GV Balancer® • Homozygous Polled • Homozygous Black
MUSCLE

44

DJS 156L ET



BULL • REG AMGV1578455 • DOB 2/26/23 • TATTOO 156L

| S A V RESOURCE 1441
MR RESOURCE 102E
| MS. GUNNISON 106R 3147A

RITO 707 OF IDEAL 3407 7075
S A V BLACKCAP MAY 4136
GUNNISON 106R
MS SOLUTION 9140W
FOSTERS L017 ET
1222G ET
CONNEALY STIMULUS 8419
LEE ANN 121X

| ACT BW |
|--------------|
| 94 |
| ADJ WW RATIO |
| 683 |



| 12LW ET
LEE ANN
| LEE ANN 346Z

| CED | BW | WW | YW | MLK | TM | CEM | HP | PG30 |
|------|-----|-------|-----|------|------|-------|-------|------|
| 8 | 1.2 | 69 | 103 | 22 | 56 | 3 | 1.26 | 0.57 |
| >95% | 85% | 65% | 70% | 60% | 70% | >95% | 95% | 40% |
| STAY | DOC | YG | CW | CREA | MARB | FAT | FPI | |
| 15 | 13 | -0.19 | 31 | 0.60 | 0.23 | -0.04 | 73.45 | |
| 40% | 25% | 10% | 65% | 35% | 80% | 3% | 90% | |

63% GV Balancer® • Homozygous Polled • Black



45

DJS 137L



BULL • REG AMGV1578453 • DOB 1/20/23 • TATTOO 137L

| BASIN PAYWEIGHT 1682
EARLY ENCOUNTER 536E
| MS SAM 536C

BASIN PAYWEIGHT 006S
21AR O LASS 7017
LAZY TV SAM U451
GRU MS IMPACT 353A
HONOR ROLL S232
GUNNISON 5151R
G A R INTEGRITY
CR KATINKA K097

| ACT BW |
|--------------|
| 75 |
| ADJ WW RATIO |
| 604 94 |



| GUNSLINGER 19U
926Y
| CR KATRINA 5125

| CED | BW | WW | YW | MLK | TM | CEM | HP | PG30 |
|------|------|-------|------|------|------|-------|-------|------|
| 17 | -2.9 | 48 | 79 | 26 | 50 | 9 | 9.21 | 1.02 |
| 10% | 10% | >95% | >95% | 25% | 95% | 15% | 20% | 40% |
| STAY | DOC | YG | CW | CREA | MARB | FAT | FPI | |
| 18 | 11 | -0.15 | 12 | 0.38 | 0.29 | -0.02 | 70.74 | |
| 10% | 75% | 20% | >95% | 80% | 65% | 20% | 95% | |

50% GV Balancer® • Homozygous Polled • Black
POUND MAKER AND FEMALE PRODUCER



Fall Balancer Bulls

FALL BORN BALANCER BULLS



Sire **EARLY ENCOUNTER 536E** AMG1402047

| CED | BW | WW | YW | MLK | TM | CREA | MARB | FPI |
|-----|------|----|-----|-----|----|------|------|-------|
| 18 | -1.3 | 74 | 136 | 32 | 69 | 0.61 | 0.56 | 93.31 |

Homozygous Polled • Homozygous Black

Early Encounter sires outstanding females that are easy fleshing, big performing and small at birth. Top 5% CED & STAY with Top 1% HP.



LOT 46



LOT 47

46

DJS 606K



BULL • REG AMGV1578397 • DOB 9/5/22 • TATTOO 606K

| BASIN PAYWEIGHT 1682
EARLY ENCOUNTER 536E
| MS SAM 536C

BASIN PAYWEIGHT 006S
21AR O LASS 7017
LAZY TV SAM U451
GRU MS IMPACT 353A
MR GRID TOPPER 43T
MS KRUGERRAND 0142X
BRILLAINCE Z35
256X

| ACT BW |
|--------------|
| 89 |
| ADJ WW RATIO |
| 634 98 |



| HONUS 40A
626D
| 481B

| CED | BW | WW | YW | MLK | TM | CEM | HP | PG30 |
|------|-----|-------|-----|------|------|-------|-------|------|
| 14 | 1.8 | 84 | 147 | 24 | 66 | 7 | 8.38 | 2.72 |
| 35% | 90% | 10% | 2% | 40% | 15% | 45% | 25% | 5% |
| STAY | DOC | YG | CW | CREA | MARB | FAT | FPI | |
| 16 | 10 | -0.10 | 39 | 0.65 | 0.41 | -0.01 | 89.24 | |
| 30% | 90% | 40% | 40% | 25% | 35% | 40% | 20% | |

38% GV Balancer® • Homozygous Polled • Homozygous Black

47

DJS 608K



BULL • REG AMGV1578398 • DOB 9/16/22 • TATTOO 608K

| BASIN PAYWEIGHT 1682
EARLY ENCOUNTER 536E
| MS SAM 536C

BASIN PAYWEIGHT 006S
21AR O LASS 7017
LAZY TV SAM U451
GRU MS IMPACT 353A
B C LOOKOUT 7024
BAR S EDELLA 3149
MR KINGSTON 106P

| ACT BW |
|--------------|
| 71 |
| ADJ WW RATIO |
| 606 93 |



| BAR S GO DADDY 0281
MS GO DADDY 274Z OF 003
| MS BALANCE 003X

| CED | BW | WW | YW | MLK | TM | CEM | HP | PG30 |
|------|------|------|-----|-------|------|------|-------|------|
| 15 | -1.3 | 69 | 114 | 26 | 60 | 6 | 10.86 | 3.61 |
| 25% | 30% | 65% | 45% | 25% | 45% | 65% | 10% | 2% |
| STAY | DOC | YG | CW | CREA | MARB | FAT | FPI | |
| 13 | 12 | 0.05 | 17 | -0.06 | 0.80 | 0.00 | 92.72 | |
| 70% | 50% | 95% | 95% | >95% | 1% | 60% | 10% | |

38% GV Balancer® • Homozygous Polled • Black



Sire

DJS RENO 124H AMG1494130

| CED | BW | WW | YW | MLK | TM | CREA | MARB | FPI |
|-----|------|----|----|-----|----|------|------|-------|
| 23 | -6.5 | 45 | 66 | 20 | 43 | 0.27 | 0.62 | 80.63 |

Very attractive calving ease bull with muscle and shape. Top of the breed in CED, birth weight, and marbling. Reno is sound structured and a female maker for sure.



48

DJS 601K

GGP

BULL • REG AMG1578783 • DOB 8/19/22 • TATTOO 601K

| VEGAS 81B
DJS RENO 124H
| 786E

| VEGAS 81B
816F
| 633D

TAU MR IN FOCUS 22Z
217X
OUTRIGHT 162A
270Z
TAU MR IN FOCUS 22Z
217X
DERRINGER 96X
402B

| ACT BW |
|--------------|
| 57 |
| ADJ WW RATIO |
| 608 94 |



| CED | BW | WW | YW | MLK | TM | CEM | HP | PG30 |
|------|------|------|------|-------|------|------|-------|-------|
| 23 | -5.5 | 47 | 70 | 21 | 45 | 14 | 2.24 | -0.59 |
| 1% | 1% | >95% | >95% | 70% | >95% | 1% | 90% | 90% |
| STAY | DOC | YG | CW | CREA | MARB | FAT | FPI | |
| 14 | 10 | 0.08 | 7 | -0.22 | 0.70 | 0.01 | 82.78 | |
| 55% | 90% | 95% | >95% | >95% | 3% | 80% | 45% | |

38% GV Balancer® • Homozygous Polled • Homozygous Black
LOTS OF MARBLING AND MEAT, WILL WORK ON HEIFERS

49

DJS 604K

GGP

BULL • REG AMG1578784 • DOB 8/25/22 • TATTOO 604K

| VEGAS 81B
DJS RENO 124H
| 786E

| DVE WOODROW 121D
907G
| MS SCC CZ8 313B

TAU MR IN FOCUS 22Z
217X
OUTRIGHT 162A
270Z
DAVIDSON BAMFORD 36A
DAVIDSON MS MAMBO 16W
SANDPOINT CONSENSUS Z008
RR ERICA DIANNA 6519

| ACT BW |
|--------------|
| 70 |
| ADJ WW RATIO |
| 645 |



| CED | BW | WW | YW | MLK | TM | CEM | HP | PG30 |
|------|------|------|-----|------|------|------|-------|-------|
| 19 | -2.3 | 71 | 106 | 23 | 56 | 10 | 3.59 | -0.04 |
| 3% | 15% | 55% | 65% | 50% | 70% | 10% | 70% | 70% |
| STAY | DOC | YG | CW | CREA | MARB | FAT | FPI | |
| 13 | 11 | 0.07 | 33 | 0.11 | 0.52 | 0.00 | 88.01 | |
| 70% | 75% | 95% | 60% | >95% | 20% | 60% | 20% | |

50% GV Balancer® • Homozygous Polled • Homozygous Black
GROWTH, MARBLING, SOUND, MATERNAL AND RECOMMENDED FOR HEIFERS





LOT 51

50

DJS 611K



BULL • REG AMGV1580904 • DOB 8/22/22 • TATTOO 611K

VEGAS 81B
DJS RENO 124H
786E

TAU MR IN FOCUS 22Z
217X
OUTRIGHT 162A
270Z

ACT BW
80
ADJ WW RATIO
606 93

COPPERHEAD 4109E
921G
AHL REBA 285Z

COPPERFIELD ET
MS INDUSTRY
DERRINGER 96X
REBA 43U



| CED | BW | WW | YW | MLK | TM | CEM | HP | PG30 |
|------|------|-------|-----|------|------|------|-------|------|
| 13 | -0.9 | 62 | 92 | 20 | 51 | 8 | 2.55 | 0.11 |
| 50% | 40% | 90% | 90% | 75% | 90% | 30% | 85% | 70% |
| STAY | DOC | YG | CW | CREA | MARB | FAT | FPI | |
| 13 | 10 | -0.01 | 24 | 0.30 | 0.45 | 0.01 | 77.64 | |
| 70% | 90% | 80% | 85% | 90% | 30% | 80% | 75% | |

38% GV Balancer® • Homozygous Polled • Homozygous Black
EASY CALVER

51

DJS 607K



BULL • REG AMGV1578785 • DOB 9/15/22 • TATTOO 607K

VEGAS 81B
DJS RENO 124H
786E

TAU MR IN FOCUS 22Z
217X
OUTRIGHT 162A
270Z

ACT BW
69
ADJ WW RATIO
607 93

COPPERHEAD 4109E
933G
657D

COPPERFIELD ET
MS INDUSTRY
BALDRIDGE WAYLON W34
MS GOOD NIGHT 0114X



| CED | BW | WW | YW | MLK | TM | CEM | HP | PG30 |
|------|------|------|-----|-------|------|------|-------|-------|
| 19 | -3.9 | 66 | 100 | 22 | 55 | 12 | 5.52 | -0.39 |
| 3% | 4% | 75% | 80% | 60% | 75% | 1% | 45% | 70% |
| STAY | DOC | YG | CW | CREA | MARB | FAT | FPI | |
| 15 | 10 | 0.17 | 22 | -0.13 | 0.50 | 0.03 | 86.11 | |
| 40% | 90% | >95% | 90% | >95% | 20% | >95% | 30% | |

38% GV Balancer® • Homozygous Polled • Homozygous Black
HIGH MARBLING THAT REALLY PERFORMED, RECOMMENDED FOR HEIFERS

52

DJS 612K



BULL • REG AMGV1580907 • DOB 10/16/22 • TATTOO 612K

VEGAS 81B
DJS RENO 124H
786E

TAU MR IN FOCUS 22Z
217X
OUTRIGHT 162A
270Z

ACT BW
71
ADJ WW RATIO
800 123

COLEMAN CHARLO 0256
MS SCC CHARLO 7014
SANDPOINT ERICA DIANNA 9717

O C C PAXTON 730P
BOHI ABIGALE 6014
G A R ULTIMATE
WULFFS ERICA DIANNA 6404



| CED | BW | WW | YW | MLK | TM | CEM | HP | PG30 |
|------|------|-------|-----|------|------|-------|-------|-------|
| 17 | -2.9 | 58 | 84 | 25 | 55 | 7 | 3.90 | -0.23 |
| 10% | 10% | 95% | 95% | 30% | 70% | 40% | 75% | 65% |
| STAY | DOC | YG | CW | CREA | MARB | FAT | FPI | |
| 14 | 10 | -0.08 | 21 | 0.32 | 0.49 | -0.01 | 80.39 | |
| 60% | 85% | 70% | 85% | 90% | 15% | 60% | 45% | |

25% GV Balancer® • Homozygous Polled • Homozygous Black
MARBLING, RECOMMENDED FOR HEIFERS



FALL BORN BALANCER BULLS

53

DJS 603K



BULL • REG AMGV1578395 • DOB 8/25/22 • TATTOO 603K

MR RESOURCE 102E
HOWARD 101H
LEE ANN

BGGR COHESION 5153C
820F
274Z

S A V RESOURCE 1441
MS. GUNNISON 106R 3147A
12LW ET
LEE ANN 346Z
BGGR GRAVITY 803A
MS LOOKOUT 930W
GUNSLINGER 19U
POST ROCK WILMA 85R2

ACT BW
90
ADJ WW RATIO
612 94



| CED | BW | WW | YW | MLK | TM | CEM | HP | PG30 |
|------|------|-------|-----|------|------|-------|-------|------|
| 6 | 4.7 | 79 | 116 | 17 | 56 | 2 | 3.15 | 0.72 |
| >95% | >95% | 20% | 40% | 95% | 70% | >95% | 85% | 40% |
| STAY | DOC | YG | CW | CREA | MARB | FAT | FPI | |
| 16 | 14 | -0.18 | 39 | 0.51 | 0.03 | -0.06 | 69.20 | |
| 30% | 10% | 15% | 40% | 55% | >95% | 1% | >95% | |

63% GV Balancer® • Homozygous Polled • Red MEAT WAGON

54

DJS 605K



BULL • REG AMGV1578396 • DOB 8/29/22 • TATTOO 605K

MR RESOURCE 102E
HOWARD 101H
LEE ANN

SVF B IMPRESS Y353
317A
110W ET

S A V RESOURCE 1441
MS. GUNNISON 106R 3147A
12LW ET
LEE ANN 346Z
CONNEALY IMPRESSION 583B
MS PERFORMER U120
LUDACRIS 039S ET
314E

ACT BW
79
ADJ WW RATIO
629 97



| CED | BW | WW | YW | MLK | TM | CEM | HP | PG30 |
|------|-----|-------|-----|------|------|-------|-------|------|
| 15 | 0.2 | 61 | 93 | 19 | 50 | 8 | 0.71 | 0.67 |
| 25% | 65% | 90% | 90% | 85% | 95% | 30% | 95% | 40% |
| STAY | DOC | YG | CW | CREA | MARB | FAT | FPI | |
| 16 | 13 | -0.06 | 24 | 0.24 | 0.41 | -0.02 | 75.58 | |
| 30% | 25% | 60% | 85% | 95% | 35% | 20% | 85% | |

50% GV Balancer® • Homozygous Polled • Homozygous Black

55

DJS 602K



BULL • REG AMGV1578394 • DOB 8/23/22 • TATTOO 602K

MR RESOURCE 102E
HOWARD 101H
LEE ANN

FLYING H MR FOCUS 354C
734E
591C

S A V RESOURCE 1441
MS. GUNNISON 106R 3147A
12LW ET
LEE ANN 346Z
FLYING H FOCUS 31Z
FLYING H GOVERNESS 176X
TAU MR IN FOCUS 22Z
150U

ACT BW
79
ADJ WW RATIO
670 103



| CED | BW | WW | YW | MLK | TM | CEM | HP | PG30 |
|------|-----|-------|-----|------|------|------|-------|------|
| 12 | 1.5 | 70 | 104 | 23 | 58 | 6 | 2.32 | 0.46 |
| 65% | 90% | 60% | 70% | 50% | 55% | 65% | 90% | 70% |
| STAY | DOC | YG | CW | CREA | MARB | FAT | FPI | |
| 20 | 13 | -0.05 | 21 | 0.29 | 0.34 | 0.00 | 77.10 | |
| 2% | 25% | 60% | 90% | 90% | 55% | 60% | 75% | |

63% GV Balancer® • Homozygous Polled • Black

56

DJS 609K



BULL • REG AMGV1578786 • DOB 9/17/22 • TATTOO 609K

COPPERHEAD 4109E
DJS RIP 172G
784E

GUNSLINGER 19U
512CET
VELVET 912U ET

COPPERFIELD ET
MS INDUSTRY
MR CONSENSUS 21C ET
228W
HONOR ROLL S232
GUNNISON 5151R
B C MATRIX 4132
VELVET MOON 226M - ET

ACT BW
89
ADJ WW RATIO
615 95



| CED | BW | WW | YW | MLK | TM | CEM | HP | PG30 |
|------|-----|-------|-----|------|------|-------|-------|------|
| 9 | 0.7 | 72 | 109 | 21 | 57 | 4 | 4.92 | 0.51 |
| 95% | 75% | 50% | 55% | 70% | 65% | 90% | 60% | 40% |
| STAY | DOC | YG | CW | CREA | MARB | FAT | FPI | |
| 20 | 12 | -0.14 | 28 | 0.54 | 0.19 | -0.02 | 74.87 | |
| 2% | 50% | 25% | 75% | 45% | 90% | 20% | 85% | |

63% GV Balancer® • Homozygous Polled • Homozygous Black
A PERFORMANCE BULL

57

DCSF 433K8



BULL • REG AMGV1558350 • DOB 10/9/22 • TATTOO 433K8

C503 YOUNG GUN
POST ROCK TOP GUN 65F8 ET
POST ROCK WILMA 29428 ET

MILL BRAE HOOVER DAM
POST ROCK TWILA 361D2
POST ROCK TWILA 339B2

BGGR GRAVITY 803A
BVLK X04 MONA LISA
GOOD NIGHT 880U
POST ROCK WILMA 261P1 ET
HOOVER DAM
MILL BRAE FA JOANIE 0152
TOP PRODUCER 282Z3
POST ROCK TWILA 449Z2

ACT BW
66
ADJ WW RATIO
728



| CED | BW | WW | YW | MLK | TM | CEM | HP | PG30 |
|------|------|-------|------|------|------|-------|-------|------|
| 16 | -2.6 | 51 | 77 | 16 | 42 | 8 | 7.35 | 0.84 |
| 15% | 15% | >95% | >95% | 95% | >95% | 30% | 35% | 40% |
| STAY | DOC | YG | CW | CREA | MARB | FAT | FPI | |
| 18 | 8 | -0.08 | 9 | 0.18 | 0.30 | -0.01 | 70.30 | |
| 10% | >95% | 50% | >95% | >95% | 65% | 40% | >95% | |

50% GV Balancer® • Homozygous Polled • Homozygous Black

58

DJS 610K



BULL • REG AMGV1578659 • DOB 10/17/22 • TATTOO 610K

INFINITY 47C
TAU LIGHTYEAR 111F
MS GUNNISON 3088A

CONNEALY THUNDER
MCCURRY EMBLYNETTE 5030
MCCURRY EMBLYNETTE 7043

TAU MR IN FOCUS 22Z
TAU MIA 363A
RUPPLE GUNNISON N31
MS PRINCES GIRL 1159Y
BALDRIDGE KABOOM K243 KCF
PARKA OF CONANGA 241
HERO 6267 OF R R 2418
CHAMPION HILL EMBLYNETTE4438

ACT BW
87
ADJ WW RATIO
759 117



| CED | BW | WW | YW | MLK | TM | CEM | HP | PG30 |
|------|-----|------|-----|------|------|------|-------|------|
| 14 | 0.0 | 70 | 108 | 26 | 60 | 6 | 5.87 | 2.40 |
| 35% | 60% | 60% | 60% | 25% | 45% | 65% | 45% | 15% |
| STAY | DOC | YG | CW | CREA | MARB | FAT | FPI | |
| 22 | 14 | 0.01 | 30 | 0.52 | 0.48 | 0.03 | 82.93 | |
| 1% | 10% | 85% | 70% | 50% | 25% | >95% | 45% | |

38% GV Balancer® • Homozygous Polled • Homozygous Black



SimAngus Bulls

YEARLING SIMANGUS BULLS

59

DJS 3119L



BULL • REG 4258280 • DOB 1/21/23 • TATTOO 3119L

S A V RAINFALL 6846
FRANK BROADWATER 1006
VISION BLANCHE 538

COLEMAN CHARLO 0256
S A V BLACKCAP MAY 4136
BRUIN UPROAR 0070
VISION BLANCHE 864

ACT BW
89
ADJ WW RATIO
592 102

GIBBS-PVF 2Z04 SWITCH
685D
BAR S BLACKBIRD 2020

GIBBS 0689X CRIMSON TIDE
PVF-9W26 HY JAUER 1045
S A V FINAL ANSWER 0035
BAR S BLACKBIRD 0135



| CE | BW | WW | YW | ADG | MCE | MILK | MWW | STAY |
|------|------|------|-------|-------|------|--------|-------|------|
| 11.7 | 0.5 | 82.5 | 132.3 | 0.31 | 6.3 | 21.2 | 62.9 | 8.9 |
| 65% | 60% | 30% | 25% | 25% | 60% | 75% | 45% | 95% |
| DOC | CW | YG | MARB | BF | REA | \$ API | \$ TI | |
| 11.0 | 55.0 | 0.07 | 0.54 | 0.022 | 0.53 | 128.0 | 85.7 | |
| 70% | 10% | 99% | 25% | 99% | 80% | 60% | 35% | |

1/4 SM 3/4 AN • Homozygous Polled • Homozygous Black



60

DJS 3120L



BULL • REG 4258281 • DOB 1/10/23 • TATTOO 3120L

S A V RAINFALL 6846
FRANK BROADWATER 1006
VISION BLANCHE 538

COLEMAN CHARLO 0256
S A V BLACKCAP MAY 4136
BRUIN UPROAR 0070
VISION BLANCHE 864

ACT BW
83
ADJ WW RATIO
569 98

GIBBS-PVF 2Z04 SWITCH
5608C
BAR S JUNE 2075

GIBBS 0689X CRIMSON TIDE
PVF-9W26 HY JAUER 1045
S A V FINAL ANSWER 0035
BAR S JUNE 9230



| CE | BW | WW | YW | ADG | MCE | MILK | MWW | STAY |
|------|------|-------|-------|--------|------|--------|-------|------|
| 11.1 | 1.4 | 80.2 | 133.8 | 0.33 | 5.0 | 21.5 | 62.2 | 11.4 |
| 70% | 75% | 35% | 20% | 15% | 80% | 75% | 50% | 85% |
| DOC | CW | YG | MARB | BF | REA | \$ API | \$ TI | |
| 11.0 | 51.9 | -0.07 | 0.57 | -0.006 | 0.72 | 133.2 | 85.0 | |
| 70% | 10% | 90% | 25% | 90% | 45% | 55% | 35% | |

1/4 SM 3/4 AN • Homozygous Polled • Homozygous Black

THICK, DEEP, AND SOUND



61

DJS 270K



BULL • REG 4258282 • DOB 8/21/22 • TATTOO 270K

CONNEALY JUDGMENT
KG JUSTIFIED 3023
KG MISS MAGIC 1443

CONNEALY CONSENSUS 7229
ENTRINE OF CONANGA 9876
SITZ WISDOM 481T
KG MISS MAGIC 3528

ACT BW
77
ADJ WW RATIO
561

GIBBS-PVF 2Z04 SWITCH
5612C
BAR S BLACKBIRD 2020

GIBBS 0689X CRIMSON TIDE
PVF-9W26 HY JAUER 1045
S A V FINAL ANSWER 0035
BAR S BLACKBIRD 0135



| CE | BW | WW | YW | ADG | MCE | MILK | MWW | STAY |
|------|------|------|-------|-------|------|--------|-------|------|
| 15.2 | -1.1 | 79.7 | 124.7 | 0.28 | 8.2 | 22.4 | 62.3 | 9.4 |
| 25% | 30% | 35% | 35% | 40% | 30% | 65% | 50% | 95% |
| DOC | CW | YG | MARB | BF | REA | \$ API | \$ TI | |
| 15.4 | 56.2 | 0.27 | 0.63 | 0.040 | 0.07 | 138.3 | 87.5 | |
| 20% | 5% | 99% | 15% | 99% | 99% | 45% | 30% | |

1/4 SM 3/4 AN • Homozygous Polled • Homozygous Black

POWERFUL, MEATY, AND MATERNALLY BRED



Yearling Angus Bulls



Sire **Frank Broadwater 1006** AAA 20196810

| CED | BW | WW | YW | MLK | MARB | RE | \$B | \$C |
|-----|-----|----|-----|-----|------|------|-----|-----|
| -2 | 2.0 | 70 | 117 | 24 | 0.62 | 0.75 | 145 | 263 |

Son of SAV Rainfall with hard to find muscle shape and substance. His foot EPD's are in the top 5% of the breed. We look forward to adding his daughters to our cow herd.

62

MR SCC 3105



BULL • REG 20733112 • DOB 1/14/23 • TATTOO 3105

| S A V Rainfall 6846
Frank Broadwater 1006
| Vision Blanche 538

| Sitz Top Game 561X
Ms SCC Top Game 865
| Ms DJS Final Answer 289Z

Coleman Charlo 0256
S A V Blackcap May 4136
Bruin Uproar 0070
Vision Blanche 864
GDAR Game Day 449
Sitz Pride 88T
S A V Final Answer 0035
Bar S Princess 9091

| ACT BW |
|--------------|
| 90 |
| ADJ WW RATIO |
| 691 106 |



| CED | BW | WW | YW | SC | DOC | HP | CEM | MILK |
|-----|------|------|-------|------|-----|------|-----|------|
| 0 | 2.3 | 76 | 116 | 0.82 | 25 | 15.7 | 3 | 22 |
| 90% | 75% | 20% | 45% | 55% | 20% | 15% | 95% | 80% |
| CW | MARB | RE | FAT | \$M | \$W | \$B | \$C | |
| 43 | 0.28 | 0.53 | 0.002 | 86 | 73 | 105 | 222 | |
| 70% | 90% | 70% | 35% | 5% | 15% | 95% | 80% | |

100% ANGUS

63

MR SCC 3100



BULL • REG 20733117 • DOB 1/21/23 • TATTOO 3100

| S A V Rainfall 6846
Frank Broadwater 1006
| Vision Blanche 538

| S A V Resource 1441
Ms SCC Resource 7031
| Ms SCC Lookout 7024-250X

Coleman Charlo 0256
S A V Blackcap May 4136
Bruin Uproar 0070
Vision Blanche 864
Rito 707 of Ideal 3407 7075
S A V Blackcap May 4136
B C Lookout 7024
Plattemere Queenie 647

| ACT BW |
|--------------|
| 87 |
| ADJ WW RATIO |
| 615 94 |



| CED | BW | WW | YW | SC | DOC | HP | CEM | MILK |
|-----|------|------|--------|------|-----|------|-----|------|
| -3 | 3.0 | 68 | 117 | 1.06 | 15 | 15.5 | 2 | 18 |
| 95% | 85% | 40% | 45% | 40% | 70% | 20% | 95% | 95% |
| CW | MARB | RE | FAT | \$M | \$W | \$B | \$C | |
| 49 | 0.31 | 1.14 | -0.014 | 70 | 54 | 130 | 239 | |
| 55% | 85% | 3% | 20% | 35% | 70% | 70% | 65% | |

100% ANGUS

VIDEOS WILL BE AVAILABLE TWO WEEKS PRIOR TO THE SALE!



64

MR SCC 3107

ANGUS 6S
Presented by Target Genetics

BULL • REG 20733107 • DOB 1/17/23 • TATTOO 3107

| S A V Rainfall 6846
Frank Broadwater 1006
| Vision Blanche 538

| WAR Pywt's Warwagon D502
MS SCC Warwagon 0111
| MS SCC Waylon 542C

Coleman Charlo 0256
S A V Blackcap May 4136
Bruin Uproar 0070
Vision Blanche 864
Basin Payweight 1682
WAR Product B501 2536
Baldrige Waylon W34
T J Delia Product P842

ACT BW
80
ADJ WW RATIO
707 108



| CED | BW | WW | YW | SC | DOC | HP | CEM | MILK |
|-----|------|------|-------|------|-----|-----|-----|------|
| 7 | 0.8 | 74 | 124 | 1.26 | 22 | 9.7 | 7 | 38 |
| 45% | 40% | 25% | 30% | 25% | 35% | 80% | 65% | 3% |
| CW | MARB | RE | FAT | \$M | \$W | \$B | \$C | |
| 55 | 0.81 | 0.68 | 0.023 | 80 | 87 | 155 | 281 | |
| 40% | 35% | 45% | 65% | 15% | 1% | 35% | 25% | |

100% ANGUS

BIG TOP, MODERATE, SOUND AND SOGGY



LOT 64

65

MR SCC 157L

ANGUS 6S
Presented by Target Genetics

BULL • REG 20819061 • DOB 1/23/23 • TATTOO 157L

| S A V Rainfall 6846
Frank Broadwater 1006
| Vision Blanche 538

| Bar S Cowtown 2903
Ms SCC Cowtown 859
| Lady Hans Travel 9028

Coleman Charlo 0256
S A V Blackcap May 4136
Bruin Uproar 0070
Vision Blanche 864
B C Lookout 7024
Bar S Blackcap 9902
S A V 8180 Traveler 004
Lady Hans Charger 674

ACT BW
70
ADJ WW RATIO



| CED | BW | WW | YW | SC | DOC | HP | CEM | MILK |
|-----|------|------|-------|-----|-----|-----|-----|------|
| 3 | 1.3 | 53 | 91 | | | | 7 | 27 |
| 75% | 55% | 80% | 85% | % | % | % | 65% | 45% |
| CW | MARB | RE | FAT | \$M | \$W | \$B | \$C | |
| 32 | 0.41 | 0.47 | 0.022 | 68 | 51 | 111 | 212 | |
| 90% | 80% | 80% | 65% | 40% | 75% | 90% | 85% | |

100% ANGUS

66

MR SCC 3112

ANGUS 6S
Presented by Target Genetics

BULL • REG 20733114 • DOB 1/16/23 • TATTOO 3112

| S A V Rainfall 6846
Frank Broadwater 1006
| Vision Blanche 538

| Schiefelbein Effective 61
Ms SCC Effective 6016
| Lady Hans Krugerrand 9105

Coleman Charlo 0256
S A V Blackcap May 4136
Bruin Uproar 0070
Vision Blanche 864
CAR Efficient 534
Frosty Answer 3979
Hans Krugerrand 713
Lady Hans Heartland 566

ACT BW
83
ADJ WW RATIO
603 92



| CED | BW | WW | YW | SC | DOC | HP | CEM | MILK |
|-----|------|------|--------|------|-----|-----|-----|------|
| -1 | 2.4 | 63 | 98 | 1.17 | 21 | 8.2 | 5 | 18 |
| 95% | 75% | 55% | 75% | 35% | 40% | 90% | 85% | 95% |
| CW | MARB | RE | FAT | \$M | \$W | \$B | \$C | |
| 32 | 0.54 | 0.49 | -0.004 | 61 | 55 | 111 | 205 | |
| 90% | 65% | 75% | 30% | 60% | 65% | 90% | 90% | |

100% ANGUS

67

MR SCC 3115

ANGUS 6S
Presented by Target Genetics

BULL • REG 20733113 • DOB 1/17/23 • TATTOO 3115

| S A V Rainfall 6846
Frank Broadwater 1006
| Vision Blanche 538

| EATHINGTON SUB-ZERO
McCurry Blackcap 5004
| HCC Blackcap 1313

Coleman Charlo 0256
S A V Blackcap May 4136
Bruin Uproar 0070
Vision Blanche 864
Connealy Capitalist 028
KP Miss Proven Queen 21
McCurry Net Worth 9061
McCurry Blackcap 6144

ACT BW
91
ADJ WW RATIO
645 99



| CED | BW | WW | YW | SC | DOC | HP | CEM | MILK |
|-----|------|------|-------|------|-----|------|-----|------|
| 4 | 0.8 | 63 | 114 | 0.79 | 22 | 13.7 | 10 | 29 |
| 70% | 40% | 55% | 50% | 60% | 35% | 35% | 35% | 30% |
| CW | MARB | RE | FAT | \$M | \$W | \$B | \$C | |
| 56 | 0.46 | 0.54 | 0.028 | 73 | 65 | 151 | 269 | |
| 35% | 75% | 70% | 70% | 25% | 35% | 40% | 35% | |

100% ANGUS

68

MR SCC 3117

ANGUS 6S
Presented by Target Genetics

BULL • REG 20733110 • DOB 1/23/23 • TATTOO 3117

| S A V Rainfall 6846
Frank Broadwater 1006
| Vision Blanche 538

| SandPoint Consensus Z008
SCC Ms Consensus 553C
| Bar S Edella 2081

Coleman Charlo 0256
S A V Blackcap May 4136
Bruin Uproar 0070
Vision Blanche 864
Connealy Consensus 7229
SandPoint Blackbird 0877
S A V Final Answer 0035
Bar S Edella 0546

ACT BW
80
ADJ WW RATIO
594 91



| CED | BW | WW | YW | SC | DOC | HP | CEM | MILK |
|-----|------|------|-------|------|-----|------|-----|------|
| 7 | 0.3 | 61 | 100 | 1.02 | 20 | 15.9 | 8 | 26 |
| 45% | 30% | 60% | 75% | 40% | 45% | 15% | 55% | 55% |
| CW | MARB | RE | FAT | \$M | \$W | \$B | \$C | |
| 31 | 0.68 | 0.55 | 0.022 | 99 | 70 | 122 | 257 | |
| 90% | 50% | 65% | 65% | 1% | 20% | 80% | 45% | |

100% ANGUS



YEARLING ANGUS BULLS



WAR PYWT'S WARWAGON D502 18771144 Sires calving ease, soundness, fleshing, performance phenotype, a female maker.

69

MR SCC 3110

ANGUS 68

BULL • REG 20733108 • DOB 4/3/23 • TATTOO 3110

Basin Payweight 1682
WAR Pywt's Warwagon D502
 | WAR Product B501 Z536

WAR Pywt's Warwagon D502
0112
 | Ms SCC Upward 310B

Basin Payweight 006S
 21AR O Lass 7017
 Connealy Final Product
 War Rocky Z536 U486

Basin Payweight 1682
 WAR Product B501 Z536
 Sitz Upward 307R
 Lady Hans Reflective 0041

ACT BW
 80
ADJ WW RATIO
 855 131



| CED | BW | WW | YW | SC | DOC | HP | CEM | MILK |
|-----|------|------|-------|------|-----|------|-----|------|
| 5 | 0.7 | 85 | 145 | 1.27 | 23 | 14.7 | 10 | 36 |
| 60% | 40% | 5% | 10% | 25% | 30% | 25% | 35% | 5% |
| CW | MARB | RE | FAT | \$M | \$W | \$B | SC | |
| 88 | 0.49 | 0.47 | 0.080 | 75 | 90 | 166 | 290 | |
| 1% | 70% | 80% | 95% | 25% | 1% | 25% | 20% | |

100% ANGUS

70

MR SCC 3118

ANGUS 68

BULL • REG 20742612 • DOB 1/30/23 • TATTOO 3118

Connealy Black Granite
Werner Flat Top 4136
 | Werner Lady 0304

BUBS Southern Charm AA31
JC Miss Caroline 156J
 | JC Miss Caroline 7C

Connealy Consensus 7229
 Eura Elga of Conanga 9109
 C R A Bextor 872 5205 608
 SandPoint Lady 7869

Silveiras Conversion 8064
 Hickory Hill Erica 009
 S A V Brilliance 8077
 JC Miss Caroline 70A

ACT BW
 77
ADJ WW RATIO
 671 103



| CED | BW | WW | YW | SC | DOC | HP | CEM | MILK |
|-----|------|------|-------|------|-----|------|-----|------|
| 11 | -0.7 | 51 | 95 | 1.11 | 7 | 14.1 | 4 | 39 |
| 15% | 15% | 85% | 80% | 35% | 95% | 30% | 90% | 2% |
| CW | MARB | RE | FAT | \$M | \$W | \$B | SC | |
| 37 | 0.65 | 0.77 | 0.008 | 68 | 65 | 139 | 248 | |
| 80% | 55% | 35% | 45% | 40% | 35% | 55% | 55% | |

100% ANGUS
 HEIFER BULL

71

MR SCC 3108

ANGUS 68

BULL • REG 20749483 • DOB 1/4/23 • TATTOO 3108

Connealy Judgment
KG Justified 3023
 | KG Miss Magic 1443

LD Capitalist 316
MS SCC Caputolist 1114
 | Ms SCC Warwagon 9034

Connealy Consensus 7229
 Entrine of Conanga 9876
 Sitz Wisdom 481T
 KG Miss Magic 3528

Connealy Capitalist 028
 LD Dixie Erica 2053
 WAR Pywt's Warwagon D502
 Ms SCC Concensus 7229 325A

ACT BW
 79
ADJ WW RATIO
 665 102



| CED | BW | WW | YW | SC | DOC | HP | CEM | MILK |
|-----|------|------|-------|------|-----|------|-----|------|
| 4 | 0.6 | 74 | 122 | 0.73 | 19 | 16.9 | 4 | 28 |
| 70% | 35% | 25% | 35% | 60% | 50% | 10% | 90% | 40% |
| CW | MARB | RE | FAT | \$M | \$W | \$B | SC | |
| 50 | 0.25 | 0.66 | 0.009 | 78 | 76 | 122 | 236 | |
| 50% | 90% | 50% | 45% | 15% | 10% | 80% | 65% | |

100% ANGUS

72

MR SCC 3103

ANGUS 68

BULL • REG 20741850 • DOB 1/5/23 • TATTOO 3103

Connealy Judgment
KG Justified 3023
 | KG Miss Magic 1443

LD Capitalist 316
MS SCC Caputolist 1106
 | Ms SCC Concensus 7229 343A

Connealy Consensus 7229
 Entrine of Conanga 9876
 Sitz Wisdom 481T
 KG Miss Magic 3528

Connealy Capitalist 028
 LD Dixie Erica 2053
 Connealy Consensus 7229
 RR Blackcap Lady 6084

ACT BW
 81
ADJ WW RATIO
 649 100



| CED | BW | WW | YW | SC | DOC | HP | CEM | MILK |
|-----|------|------|-------|------|-----|------|-----|------|
| 4 | 1.8 | 74 | 124 | 1.43 | 21 | 17.4 | 6 | 33 |
| 70% | 65% | 25% | 30% | 20% | 40% | 10% | 75% | 15% |
| CW | MARB | RE | FAT | \$M | \$W | \$B | SC | |
| 46 | 0.93 | 0.56 | 0.009 | 79 | 78 | 143 | 264 | |
| 60% | 25% | 65% | 45% | 15% | 10% | 50% | 40% | |

100% ANGUS



Fall Angus Bulls

FALL BORN ANGUS BULLS



Sire

KG Justified 3023 AAA 17707279

| CED | BW | WW | YW | MLK | MARB | RE | \$B | \$C |
|-----|------|----|-----|-----|------|------|-----|-----|
| 11 | -1.9 | 62 | 109 | 30 | 1.11 | 0.23 | 145 | 283 |

Justified sires consistency, eye appeal and style, while backing it up with EPDs that commercial cattlemen want. But it is the daughter's where he really shines. Phenotype, beautiful udders, disposition, and great on their feet with that broody mother cow look.



**Swanson
Cattle
Company**

**BUILD A HERD WITH THIS STRONG
TOPPED, SOGGY STATURED, THICK
AND LONG INDIVIDUAL!**

73

MR SCC 2101

ANGUS^{BS}

BULL • REG 20741909 • DOB 8/17/22 • TATTOO 2101

| Connealy Judgment
KG Justified 3023
| KG Miss Magic 1443

| WAR Pywt's Warwagon D502
Ms SCC Warwagon 9023
| Bar S Pride 5020

Connealy Consensus 7229
Entrine of Conanga 9876
Sitz Wisdom 481T
KG Miss Magic 3528
Basin Payweight 1682
WAR Product B501 2536
S A V Final Answer 0035
Bar S Pride 3279

| ACT BW |
|--------------|
| 65 |
| ADJ WW RATIO |
| 694 118 |



| CED | BW | WW | YW | SC | DOC | HP | CEM | MILK |
|-----|------|------|-------|------|-----|------|-----|------|
| 11 | -1.5 | 81 | 144 | 2.25 | 24 | 15.4 | 10 | 38 |
| 15% | 10% | 10% | 10% | 1% | 25% | 20% | 35% | 3% |
| CW | MARB | RE | FAT | \$M | \$W | \$B | \$C | |
| 53 | 0.81 | 0.25 | 0.066 | 86 | 92 | 141 | 269 | |
| 45% | 35% | 95% | 95% | 5% | 1% | 55% | 35% | |

100% ANGUS
A DO IT ALL HERD SIRE



FALL BORN ANGUS BULLS



Make the trip
**FOR A SELECTION OF
 200+ BULLS IN TWO DAYS!**

Join our marketing partner, Warner Beef Genetics, on
 Wednesday, March 6th just 25 miles to the West of us in Arapahoe, NE!

74

MR SCC 2103



BULL • REG 20742273 • DOB 8/14/22 • TATTOO 2103

| Connealy Judgment
KG Justified 3023
 | KG Miss Magic 1443

Connealy Consensus 7229
 Entrine of Conanga 9876
 Sitz Wisdom 481T
 KG Miss Magic 3528
 Basin Payweight 1682
 WAR Product B501 Z536
 Mohnen Brushpopper 295
 Frosty Elba 2442

| |
|---------------------|
| ACT BW |
| 67 |
| ADJ WW RATIO |
| 608 104 |



| CED | BW | WW | YW | SC | DOC | HP | CEM | MILK |
|-----------|-------------|-------------|---------------|-------------|-----------|-------------|------------|-----------|
| 8 | 1.0 | 78 | 131 | 1.48 | 22 | 21.4 | 8 | 30 |
| 35% | 45% | 15% | 20% | 15% | 35% | 1% | 55% | 25% |
| CW | MARB | RE | FAT | \$M | \$W | \$B | \$C | |
| 47 | 0.48 | 0.72 | -0.001 | 102 | 83 | 128 | 268 | |
| 60% | 70% | 40% | 35% | 1% | 3% | 70% | 35% | |

100% ANGUS

THESE JUSTIFIED'S WILL SIRE KEEPERS

75

MR SCC 2102



BULL • REG 20741912 • DOB 8/18/22 • TATTOO 2102

| Connealy Judgment
KG Justified 3023
 | KG Miss Magic 1443

Connealy Consensus 7229
 Entrine of Conanga 9876
 Sitz Wisdom 481T
 KG Miss Magic 3528
 B C Lookout 7024
 Bar S Blackcap 9902
 S A V 004 Predominant 4438
 Plattemere Reva 142

| |
|---------------------|
| ACT BW |
| 70 |
| ADJ WW RATIO |
| 538 92 |



| Bar S Cowtown 2903
Ms SCC Cowtown 852
 | Ms SCC Predominant 4438-181X

| CED | BW | WW | YW | SC | DOC | HP | CEM | MILK |
|-----------|-------------|-------------|--------------|-------------|-----------|-------------|------------|-----------|
| 11 | -0.3 | 65 | 109 | 1.54 | 24 | 14.1 | 14 | 37 |
| 15% | 20% | 45% | 60% | 15% | 25% | 30% | 10% | 4% |
| CW | MARB | RE | FAT | \$M | \$W | \$B | \$C | |
| 43 | 0.77 | 0.30 | 0.017 | 78 | 76 | 135 | 253 | |
| 70% | 40% | 95% | 55% | 15% | 10% | 65% | 50% | |

100% ANGUS

76

MR SCC 2104



BULL • REG 20741914 • DOB 8/16/22 • TATTOO 2104

| Connealy Judgment
KG Justified 3023
 | KG Miss Magic 1443

Connealy Consensus 7229
 Entrine of Conanga 9876
 Sitz Wisdom 481T
 KG Miss Magic 3528
 O C C Paxton 730P
 Bohi Abigale 6014
 Bar S Midland 6388
 Bar S PRIDE 7075

| |
|---------------------|
| ACT BW |
| 71 |
| ADJ WW RATIO |
| 539 92 |



| Coleman Charlo 0256
Bar S Pride 5019
 | Bar S Pride 1231

| CED | BW | WW | YW | SC | DOC | HP | CEM | MILK |
|-----------|-------------|-------------|--------------|-------------|-----------|-------------|------------|-----------|
| 12 | -1.2 | 71 | 122 | 1.18 | 17 | 14.0 | 8 | 34 |
| 10% | 10% | 30% | 35% | 30% | 60% | 30% | 55% | 10% |
| CW | MARB | RE | FAT | \$M | \$W | \$B | \$C | |
| 47 | 0.97 | 0.39 | 0.043 | 80 | 82 | 145 | 268 | |
| 60% | 25% | 85% | 85% | 15% | 3% | 50% | 35% | |

100% ANGUS

77

MR SCC 2105



BULL • REG 20741913 • DOB 8/21/22 • TATTOO 2105

| Connealy Judgment
KG Justified 3023
 | KG Miss Magic 1443

Connealy Consensus 7229
 Entrine of Conanga 9876
 Sitz Wisdom 481T
 KG Miss Magic 3528
 B C Lookout 7024
 Bar S Blackcap 9902
 S A V Pioneer 7301
 SandPoint Blackcap 0664

| |
|---------------------|
| ACT BW |
| 75 |
| ADJ WW RATIO |
| 554 94 |



| Bar S Cowtown 2903
Ms SCC Cowtown 856
 | SandPoint Blackcap 2054

| CED | BW | WW | YW | SC | DOC | HP | CEM | MILK |
|-----------|-------------|-------------|--------------|-------------|-----------|-------------|------------|-----------|
| 6 | -0.2 | 70 | 103 | 0.95 | 15 | 16.6 | 15 | 29 |
| 55% | 20% | 30% | 70% | 45% | 70% | 10% | 3% | 30% |
| CW | MARB | RE | FAT | \$M | \$W | \$B | \$C | |
| 25 | 0.89 | 0.35 | 0.012 | 92 | 80 | 117 | 244 | |
| 95% | 30% | 90% | 50% | 2% | 5% | 85% | 60% | |

100% ANGUS

78

MR SCC 2106



BULL • REG 20741907 • DOB 8/22/22 • TATTOO 2106

| Connealy Judgment
KG Justified 3023
 | KG Miss Magic 1443

Connealy Consensus 7229
 Entrine of Conanga 9876
 Sitz Wisdom 481T
 KG Miss Magic 3528
 Basin Payweight 1682
 WAR Product B501 Z536
 Connealy Consensus 7229
 Barstow Annie BA W6

| |
|---------------------|
| ACT BW |
| 77 |
| ADJ WW RATIO |
| 587 100 |



| WAR Pywt's Warwagon D502
Ms SCC Warwagon 9034
 | Ms SCC Consensus 7229 325A

| CED | BW | WW | YW | SC | DOC | HP | CEM | MILK |
|-----------|-------------|-------------|--------------|-------------|-----------|-------------|------------|-----------|
| 8 | 0.0 | 74 | 133 | 1.76 | 17 | 16.6 | 12 | 33 |
| 35% | 25% | 25% | 20% | 10% | 60% | 10% | 20% | 15% |
| CW | MARB | RE | FAT | \$M | \$W | \$B | \$C | |
| 56 | 0.63 | 0.38 | 0.071 | 76 | 77 | 142 | 260 | |
| 35% | 55% | 85% | 95% | 20% | 10% | 55% | 40% | |

100% ANGUS





Sire **Duff Carried Away 1882** AAA 19663302

| CED | BW | WW | YW | MLK | MARB | RE | \$B | \$C |
|-----|-----|----|----|-----|------|-------|-----|-----|
| 6 | 2.5 | 51 | 83 | 30 | 0.01 | 0.041 | 78 | 156 |

Phenomenal power and amazing depth of rib. Duff Carried Away is an outcross sire with extra rib shape with deceptive length, sound to the ground, and added fleshing ability. Cow Maker.



LOT 79

79

Duff Carried Away 22514 ANGUS 6S

BULL • REG 20528275 • DOB 09/16/22 • TATTOO 22514

| Duff Carry On 252
Duff Carried Away 1882
| Duff FL 443 Merle 867

| Duff Full House 225
Duff Dixie Erica 171 483
| Duff STM 001 DixieErica 171

PBC 707 1M F0203
O C C Juanada 927K
DCC First Look 3001
DCC NL 652K Merle 443
O C C Joker 620J
O C C Dixie Erica 776K
Duff Stimulus 856
DCC Dixie Erica 001

| ACT BW |
|--------------|
| 72 |
| ADJ WW RATIO |
| 735 100 |



| CED | BW | WW | YW | SC | DOC | HP | CEM | MILK |
|-----|------|------|--------|-------|-----|------|-----|------|
| 6 | 1.4 | 57 | 94 | -0.05 | 13 | 12.1 | -4 | 28 |
| 55% | 55% | 70% | 80% | 95% | 75% | 55% | 95% | 40% |
| CW | MARB | RE | FAT | \$M | \$W | \$B | \$C | |
| 31 | 0.14 | 0.69 | -0.003 | 80 | 68 | 104 | 215 | |
| 90% | 95% | 45% | 30% | 15% | 25% | 95% | 85% | |

100% ANGUS

RECOMMENDED FOR COWS

80

N3 Carried Away 22201 ANGUS 6S

BULL • REG 20760359 • DOB 09/05/22 • TATTOO 22201

| Duff Carry On 252
Duff Carried Away 1882
| Duff FL 443 Merle 867

| MAR Innovation 251
RB Lady Innovation 2145-5482
| RB Lady Sterling 890-2145

PBC 707 1M F0203
O C C Juanada 927K
DCC First Look 3001
DCC NL 652K Merle 443
Connealy Impression
MAR Final Kahuna 856
HAYNES Sterling 924
R B Lady Standard 305-890

| ACT BW |
|--------------|
| 76 |
| ADJ WW RATIO |
| 783 100 |



| CED | BW | WW | YW | SC | DOC | HP | CEM | MILK |
|-----|------|------|-------|------|-----|------|-----|------|
| 5 | 2.8 | 59 | 93 | 0.79 | 13 | 9.2 | 9 | 29 |
| 60% | 85% | 65% | 85% | 60% | 75% | 9.2% | 95% | 30% |
| CW | MARB | RE | FAT | \$M | \$W | \$B | \$C | |
| 30 | 0.38 | 0.64 | 0.014 | 74 | 65 | 110 | 217 | |
| 90% | 80% | 55% | 55% | 25% | 35% | 90% | 80% | |

100% ANGUS

RECOMMENDED FOR COWS

Lots 79-80 **DEEP, SOUND, AND WIDE!**



Red Angus Bulls

Sire

BIEBER CL ENERGIZE F121 RAAA 3958815

| PRO S | HB | GM | CED | BW | WW | YW | MARB | REA |
|-------|----|----|-----|------|----|-----|------|------|
| 106 | 43 | 64 | 17 | -5.5 | 65 | 112 | 0.56 | 0.38 |

Go to bull for dynamic phenotype, structure and EPDs. Blends the growth curve with added CE and exceptional carcass value. He is sporting sound structure and good feet.



81

MR DJS 3201L



BULL • REG 4801320 • DOB 1/10/23 • TATTOO 3201L

| BIEBER CL ATOMIC C218
BIEBER CL ENERGIZE F121
| BIEBER CL ADELLE 575D

ANDRAS FUSION R236
BIEBER DATELINE 308Y
BIEBER HARD DRIVE Y120
BIEBER ADELLE 297Y

| ACT BW |
|--------------|
| 81 |
| ADJ WW RATIO |
| 663 94 |

| LSF SRR PRIME INDEX 7503E
MS DJS PLRFG 082H
| LSF SRR RED FAY W9002 D6326

LEACHMAN PLEDGE A282Z
BROWN MS P707 X7583
BROWN GOLD MINE A7610
LSF RED FAY T7010 W9002



| PRO S | HB | GM | CED | BW | WW | YW | MILK | HP |
|-------|-----|------|------|------|-----|------|------|-----|
| 125 | 70 | 54 | 12 | -3.3 | 67 | 107 | 25 | 14 |
| 8% | 16% | 19% | 59% | 24% | 26% | 31% | 57% | 10% |
| ME | CEM | STAY | MARB | YG | CW | REA | FAT | |
| 5 | 4 | 19 | 0.78 | 0.00 | 16 | 0.16 | 0.01 | |
| 62% | 92% | 8% | 5% | 19% | 80% | 45% | 32% | |

100% AR

82

MR DJS 272K



BULL • REG 4748523 • DOB 8/20/22 • TATTOO 272K

| BIEBER CL ATOMIC C218
BIEBER CL ENERGIZE F121
| BIEBER CL ADELLE 575D

ANDRAS FUSION R236
BIEBER DATELINE 308Y
BIEBER HARD DRIVE Y120
BIEBER ADELLE 297Y

| ACT BW |
|--------------|
| 76 |
| ADJ WW RATIO |
| 602 104 |

| BROWN PREMIER X7876
LSF SRR CHERISH B4128 D6011
| LSF CHERISH T7043 B4128

BECKTON NEBULA P P707
BROWN MS DESTINATION T7664
LSF NIGHT CALVER 9921W
LSF CHERISH R5177 T7043



| PRO S | HB | GM | CED | BW | WW | YW | MILK | HP |
|-------|-----|------|------|------|-----|------|------|----|
| 160 | 84 | 76 | 16 | -3.5 | 72 | 126 | 28 | 16 |
| 1% | 5% | 3% | 14% | 21% | 14% | 5% | 30% | 4% |
| ME | CEM | STAY | MARB | YG | CW | REA | FAT | |
| 7 | 8 | 19 | 0.62 | 0.10 | 39 | 0.35 | 0.03 | |
| 74% | 32% | 9% | 15% | 67% | 7% | 13% | 80% | |

100% AR





83

MR DJS 276K



BULL • REG 4748527 • DOB 8/20/22 • TATTOO 276K

| BIEBER CL ATOMIC C218
BIEBER CL ENERGIZE F121
 | BIEBER CL ADELLE 575D

| 5L INDEPENDENCE 560-298Y
LSF SRR DINA B4237 D6180
 | LSF DINA X0089 B4237

ANDRAS FUSION R236
 BIEBER DATELINE 308Y
 BIEBER HARD DRIVE Y120
 BIEBER ADELLE 297Y
 BUF CRK THE RIGHT KIND U199
 5L BLACK ADINA 525-560
 BROWN JYJ REDEMPTION Y1334
 LSF DINA T7090 X0089

| ACT BW |
|--------------|
| 69 |
| ADJ WW RATIO |
| 524 91 |



| PRO S | HB | GM | CED | BW | WW | YW | MILK | HP |
|-----------|-----------|-----------|-------------|-------------|-----------|-------------|-------------|-----------|
| 85 | 34 | 51 | 16 | -5.1 | 62 | 101 | 24 | 14 |
| 59% | 82% | 25% | 9% | 6% | 48% | 43% | 67% | 15% |
| ME | CEM | STAY | MARB | YG | CW | REA | FAT | |
| 6 | 7 | 12 | 0.67 | 0.10 | 21 | 0.02 | 0.02 | |
| 64% | 51% | 81% | 11% | 71% | 64% | 75% | 62% | |

100% AR

84

MR DJS 271K



BULL • REG 4748509 • DOB 8/16/22 • TATTOO 271K

| BIEBER CL ATOMIC C218
BIEBER CL ENERGIZE F121
 | BIEBER CL ADELLE 575D

| 5L INDEPENDENCE 560-298Y
LSF SRR CRYSTAL T7142 D6171
 | LSF CRYSTAL LA394 T7142

ANDRAS FUSION R236
 BIEBER DATELINE 308Y
 BIEBER HARD DRIVE Y120
 BIEBER ADELLE 297Y
 BUF CRK THE RIGHT KIND U199
 5L BLACK ADINA 525-560
 LCC NEW CHAPTER A705L
 LSF CRYSTAL G1382 LA394

| ACT BW |
|--------------|
| 69 |
| ADJ WW RATIO |
| 602 104 |



| PRO S | HB | GM | CED | BW | WW | YW | MILK | HP |
|-----------|-----------|-----------|-------------|-------------|-----------|-------------|-------------|-----------|
| 91 | 53 | 38 | 16 | -5.4 | 63 | 103 | 30 | 15 |
| 48% | 46% | 50% | 16% | 4% | 44% | 39% | 18% | 7% |
| ME | CEM | STAY | MARB | YG | CW | REA | FAT | |
| 8 | 6 | 15 | 0.67 | 0.05 | 9 | 0.05 | 0.03 | |
| 77% | 66% | 41% | 11% | 43% | 93% | 69% | 69% | |

100% AR

ENERGIZE IS A DO IT ALL SIRE!



RED ANGUS BULLS



Sire

LSF SRR PRIME INDEX 7503E RAAA 3733509

| PRO S | HB | GM | CED | BW | WW | YW | MARB | REA |
|-------|----|----|-----|------|----|-----|------|------|
| 142 | 83 | 58 | 16 | -4.6 | 64 | 104 | 1.11 | 0.02 |

Calving ease, female maker, top 1% of herd for marbling, keep the daughters. Pledge is 7 years old and still doing his job showing outstanding longevity.



LOT 86

85

MR DJS 273K



BULL • REG 4748547 • DOB 9/11/22 • TATTOO 273K

| LEACHMAN PLEDGE A282Z
LSF SRR PRIME INDEX 7503E
 | BROWN MS P707 X7583

LSF NEXTPECTION 0083X
 LCOC ZARA TG004
 BECKTON NEBULA P P707
 C-BAR & BROWN ABIGRACE T714
 BUF CRK THE RIGHT KIND U199
 5L DEE DEE 4479-1611
 5L TRAVLIN EXPRESS 1892-6295
 SRR FLO-MARIE 733-532

| ACT BW |
|--------------|
| 76 |
| ADJ WW RATIO |
| 600 104 |



| 5L RIGHT VIEW 1611-40A
LSF SRR FLO-MARIE 922 D6552
 | SRR FLO-MARIE 922-733

| PRO S | HB | GM | CED | BW | WW | YW | MILK | HP |
|-------|-----|------|------|-------|-----|------|-------|-----|
| 131 | 64 | 67 | 12 | -1.8 | 65 | 107 | 21 | 14 |
| 5% | 26% | 7% | 63% | 51% | 36% | 31% | 87% | 16% |
| ME | CEM | STAY | MARB | YG | CW | REA | FAT | |
| 3 | 6 | 16 | 0.87 | -0.02 | 21 | 0.17 | -0.01 | |
| 49% | 64% | 33% | 2% | 12% | 61% | 43% | 7% | |

100% AR

PRIME INDEX SON THAT IS A TOP MARBLING BULL

86

MR DJS 274K



BULL • REG 4748501 • DOB 9/14/22 • TATTOO 274K

| LEACHMAN PLEDGE A282Z
LSF SRR PRIME INDEX 7503E
 | BROWN MS P707 X7583

LSF NEXTPECTION 0083X
 LCOC ZARA TG004
 BECKTON NEBULA P P707
 C-BAR & BROWN ABIGRACE T714
 MESSMER PACKER S008
 LSF DELLA P4078 U8051
 BIEBER ROMERO 9136
 LCHMN GILDA D1017

| ACT BW |
|--------------|
| 67 |
| ADJ WW RATIO |
| 553 96 |



| LSF NIGHT CALVER 9921W
LSF SRR GILDA C5244
 | LSF GILDA D1017 U8000

| PRO S | HB | GM | CED | BW | WW | YW | MILK | HP |
|-------|-----|------|------|------|-----|------|------|----|
| 169 | 119 | 50 | 17 | -2.6 | 69 | 114 | 23 | 16 |
| 1% | 1% | 26% | 9% | 35% | 22% | 17% | 75% | 3% |
| ME | CEM | STAY | MARB | YG | CW | REA | FAT | |
| -2 | 11 | 21 | 0.58 | 0.08 | 20 | 0.21 | 0.04 | |
| 25% | 2% | 2% | 20% | 58% | 66% | 34% | 89% | |

100% AR

WILL MAKE FEMALES AND FEEDERS

87

MR DJS 3202L



BULL • REG 4801324 • DOB 1/31/23 • TATTOO 3202L

| KJHT POWER TAKE OFF
WLTR OLE RED 11H
 | TC PRIMROSE 70B

RED SOO LINE POWER EYE 161X
 SRA PAINTBUCKET
 RED SSS OLY 554T
 NBAR PRIMROSE R541
 HXC CONQUEST 4405P
 LSF DINA T7103 Y1079
 SUTH BETTER HUCKLEBERRY 76W
 SRR MISS CRICKET 926-015

| ACT BW |
|--------------|
| 80 |
| ADJ WW RATIO |
| 632 89 |



| LSF SRR VICTORY 3013A
LSF SRR MS CRICKET D6017
 | LSF SRR MISS CRICKET B4354

| PRO S | HB | GM | CED | BW | WW | YW | MILK | HP |
|-------|-----|------|------|------|-----|------|------|-----|
| 23 | 18 | 5 | 14 | -5.0 | 47 | 76 | 25 | 8 |
| 99% | 96% | 97% | 30% | 7% | 89% | 87% | 62% | 97% |
| ME | CEM | STAY | MARB | YG | CW | REA | FAT | |
| 5 | 9 | 11 | 0.09 | 0.03 | 18 | 0.10 | 0.01 | |
| 60% | 20% | 87% | 99% | 29% | 73% | 58% | 30% | |

100% AR

FEEDERS AND FEMALES




Balancer Heifers



LOT 88

88 **DJS 306L** **GGP**

COW • REG AMGV1586875 • DOB 8/22/22 • TATTOO 306K


| | | |
|---|--|----------------------------|
| MR RESOURCE 102E HOWARD 101H LEE ANN | S A V RESOURCE 1441 MS. GUNNISON 106R 3147A 12LW ET LEE ANN 346Z WESTERN HAULER 028S MISS OUTER LIMITS 80U TITUS 880K TS BARBARA 1112 | ACT BW 90 |
| MR HAULER 12X ET 246Z 724T |  | |

| CED | BW | WW | YW | MLK | TM | CEM | HP | PG30 |
|------|------|-------|-----|------|------|-------|-------|------|
| 6 | 3.3 | 72 | 110 | 21 | 57 | 2 | 1.23 | 0.73 |
| >95% | >95% | 50% | 55% | 70% | 65% | >95% | 95% | 40% |
| STAY | DOC | YG | CW | CREA | MARB | FAT | FPI | |
| 14 | 13 | -0.07 | 41 | 0.59 | 0.28 | -0.01 | 73.05 | |
| 55% | 25% | 55% | 35% | 35% | 70% | 40% | 90% | |

50% GV Balancer® • Homozygous Polled • Red
HOMO POLLED HOMO GOOD

89 **DJS 310L** **GGP**

COW • REG AMGV1586879 • DOB 1/13/23 • TATTOO 310L

| | | |
|---|--|----------------------------|
| MR RESOURCE 102E HOWARD 101H LEE ANN | S A V RESOURCE 1441 MS. GUNNISON 106R 3147A 12LW ET LEE ANN 346Z S A V FINAL ANSWER 0035 ESTELLE X014 GUNSLINGER 19U 216M | ACT BW 67 |
| EGL LIFELINE B101 803F 159X |  | |

| CED | BW | WW | YW | MLK | TM | CEM | HP | PG30 |
|------|------|-------|-----|------|------|-------|-------|-------|
| 12 | -0.5 | 62 | 89 | 20 | 51 | 5 | 3.31 | -0.35 |
| 65% | 50% | 90% | 95% | 75% | 90% | 80% | 85% | 70% |
| STAY | DOC | YG | CW | CREA | MARB | FAT | FPI | |
| 16 | 12 | -0.16 | 33 | 0.59 | 0.13 | -0.03 | 69.17 | |
| 30% | 50% | 20% | 60% | 35% | 95% | 10% | >95% | |

63% GV Balancer® • Homozygous Polled • Red
ANOTHER ONE THAT'S HOMO POLLED HOMO GOOD




BALANCER HEIFERS



LOT 90


90 **DJS 311L** **GGP**
COW • REG AMGV1586881 • DOB 2/2/23 • TATTOO 311L

| | | |
|---|---|---|
| MR RESOURCE 102E HOWARD 101H LEE ANN | S A V RESOURCE 1441 MS. GUNNISON 106R 3147A 12LW ET LEE ANN 346Z | ACT BW 70 |
| BGGG COHESION 5153C 812F 521C | BGGG GRAVITY 803A MS LOOKOUT 930W TAU MR IN FOCUS 22Z 79S |  |

| CED | BW | WW | YW | MLK | TM | CEM | HP | PG30 |
|------|-----|-------|-----|------|------|-------|-------|------|
| 9 | 0.7 | 67 | 93 | 19 | 52 | 4 | 4.12 | 1.08 |
| 95% | 75% | 70% | 90% | 85% | 85% | 90% | 70% | 40% |
| STAY | DOC | YG | CW | CREA | MARB | FAT | FPI | |
| 14 | 11 | -0.07 | 29 | 0.35 | 0.38 | -0.02 | 75.37 | |
| 55% | 75% | 55% | 75% | 85% | 45% | 20% | 85% | |

50% GV Balancer® • Homozygous Polled • Black
 BROOD COW

91 **DJS 308L** **GGP**
COW • REG AMGV1586882 • DOB 2/10/23 • TATTOO 308L

| | | |
|---|---|---|
| MR RESOURCE 102E HOWARD 101H LEE ANN | S A V RESOURCE 1441 MS. GUNNISON 106R 3147A 12LW ET LEE ANN 346Z | ACT BW 87 |
| DERRINGER 96X 770E 521C | GUNSLINGER 19U MISS 004-76T TAU MR IN FOCUS 22Z 79S |  |

| CED | BW | WW | YW | MLK | TM | CEM | HP | PG30 |
|------|------|-------|-----|------|------|-------|-------|------|
| 9 | 2.5 | 69 | 102 | 20 | 55 | 4 | 1.72 | 0.18 |
| 95% | >95% | 65% | 75% | 75% | 75% | 90% | 90% | 70% |
| STAY | DOC | YG | CW | CREA | MARB | FAT | FPI | |
| 14 | 14 | -0.10 | 32 | 0.44 | 0.11 | -0.02 | 68.45 | |
| 55% | 10% | 40% | 65% | 65% | 95% | 20% | >95% | |

50% GV Balancer® • Homozygous Polled • Black
 PERFORMANCE BROOD COW

WATCH AND BID ONLINE!

DVAuction
 Broadcasting Real-Time Auctions



92

DJS 315L



COW • REG AMGV1586877 • DOB 1/11/23 • TATTOO 315L

COPPERHEAD 4109E
DJS RIP 172G
784E

COPPERFIELD ET
MS INDUSTRY
MR CONSENSUS 21C ET
228W
S A V RESOURCE 1441
MS. GUNNISON 106R 3147A
DERRINGER 96X
24W

ACT BW
78



| CED | BW | WW | YW | MLK | TM | CEM | HP | PG30 |
|------|-----|-------|-----|------|------|-------|-------|------|
| 9 | 1.0 | 63 | 103 | 22 | 54 | 5 | 1.46 | 1.26 |
| 95% | 80% | 85% | 70% | 60% | 80% | 80% | 95% | 40% |
| STAY | DOC | YG | CW | CREA | MARB | FAT | FPI | |
| 15 | 10 | -0.06 | 31 | 0.40 | 0.38 | -0.01 | 74.05 | |
| 40% | 90% | 60% | 65% | 75% | 45% | 40% | 90% | |

50% GV Balancer® • Homozygous Polled • Homozygous Black
FROM A TOP COW FAMILY



DJS RIP 172G 1494652 Rip is siring big performance cattle that are sound structured and attractive. The females have that broody look and the sons are powerful. The Rip bulls should sire fast growing feeder cattle or excellent females.

93

DJS 321L



COW • REG AMGV1587652 • DOB 1/18/23 • TATTOO 321L

COPPERHEAD 4109E
DJS RIP 172G
784E

COPPERFIELD ET
MS INDUSTRY
MR CONSENSUS 21C ET
228W

ACT BW
70



| CED | BW | WW | YW | MLK | TM | CEM | HP | PG30 |
|------|------|------|-----|------|------|------|-------|------|
| 11 | -0.4 | 58 | 96 | 21 | 50 | 7 | 1.20 | 0.40 |
| 75% | 45% | 95% | 80% | 70% | 90% | 40% | 95% | 65% |
| STAY | DOC | YG | CW | CREA | MARB | FAT | FPI | |
| 10 | 11 | 0.01 | 35 | 0.35 | 0.39 | 0.01 | 73.45 | |
| 95% | 70% | 90% | 40% | 90% | 30% | 85% | 85% | |

25% GV Balancer® • Polled • Black



LOT 93

94

DJS 313L



COW • REG AMGV1586880 • DOB 1/23/23 • TATTOO 313L

COPPERHEAD 4109E
DJS RIP 172G
784E

COPPERFIELD ET
MS INDUSTRY
MR CONSENSUS 21C ET
228W
BASIN PAYWEIGHT 1682
WAR PRODUCT B501 Z536
DAVIDSON JACKPOT 74Z
198L

ACT BW
81



| CED | BW | WW | YW | MLK | TM | CEM | HP | PG30 |
|------|------|-------|-----|------|------|------|-------|------|
| 12 | -0.2 | 71 | 115 | 28 | 65 | 6 | 4.55 | 2.62 |
| 65% | 55% | 55% | 40% | 10% | 20% | 65% | 60% | 5% |
| STAY | DOC | YG | CW | CREA | MARB | FAT | FPI | |
| 17 | 12 | -0.01 | 41 | 0.48 | 0.44 | 0.01 | 83.13 | |
| 20% | 50% | 80% | 35% | 60% | 30% | 80% | 45% | |

50% GV Balancer® • Homozygous Polled • Homozygous Black

95

DJS 307L



COW • REG AMGV1586883 • DOB 2/13/23 • TATTOO 307L

INFINITY 47C
TAU LIGHTYEAR 111F
MS GUNNISON 3088A

TAU MR IN FOCUS 22Z
TAU MIA 363A
RUPPLE GUNNISON N31
MS PRINCES GIRL 1159Y
GCC TOTAL RECALL 806T
179X
KINGPIN 0234K
402E

ACT BW
87



| CED | BW | WW | YW | MLK | TM | CEM | HP | PG30 |
|------|-----|-------|-----|------|------|-------|-------|------|
| 10 | 1.3 | 65 | 97 | 21 | 54 | 3 | 5.42 | 1.02 |
| 90% | 85% | 80% | 85% | 70% | 80% | >95% | 60% | 40% |
| STAY | DOC | YG | CW | CREA | MARB | FAT | FPI | |
| 25 | 13 | -0.14 | 19 | 0.53 | 0.42 | -0.01 | 75.59 | |
| 1% | 25% | 25% | 95% | 50% | 35% | 40% | 85% | |

63% GV Balancer® • Homozygous Polled • Homozygous Black



BALANCER HEIFERS



TAU LIGHTYEAR 111F 1421204 Buzz sires big ribbed, moderate framed, sound structured, easy fleshing cattle. Top 1% STAY, Top 10% DOC, Top 5% REA.

96

DJS 318L



COW • REG AMGV1587360 • DOB 2/13/23 • TATTOO 318L

| INFINITY 47C
TAU LIGHTYEAR 111F
| MS GUNNISON 3088A

TAU MR IN FOCUS 22Z
TAU MIA 363A
RUPPLE GUNNISON N31
MS PRINCES GIRL 1159Y
SITZ TRAVELER 8180
S A V EMULOUS 8145
BAR S EQUATOR 7026
BAR S EDELLA 7091

ACT BW
70



| CED | BW | WW | YW | MLK | TM | CEM | HP | PG30 |
|------|------|------|-----|------|------|------|-------|------|
| 14 | -1.1 | 68 | 105 | 24 | 58 | 8 | 6.20 | 0.80 |
| 35% | 35% | 65% | 65% | 40% | 55% | 30% | 45% | 40% |
| STAY | DOC | YG | CW | CREA | MARB | FAT | FPI | |
| 20 | 13 | 0.01 | 23 | 0.37 | 0.47 | 0.03 | 82.63 | |
| 2% | 25% | 85% | 90% | 80% | 25% | >95% | 45% | |

38% GV Balancer® • Homozygous Polled • Homozygous Black

97

DJS 317L



COW • REG AMGV1586893 • DOB 3/16/23 • TATTOO 317L

| INFINITY 47C
TAU LIGHTYEAR 111F
| MS GUNNISON 3088A

TAU MR IN FOCUS 22Z
TAU MIA 363A
RUPPLE GUNNISON N31
MS PRINCES GIRL 1159Y
O C C LEGEND 616L
GIBBET HILL MIGNONNE E37
MASTERPIECE 138L ET
VANESSA 9107H ET

ACT BW
83

| B C LOOKOUT 7024
4108b ET
| VANESSA 471P ET



| CED | BW | WW | YW | MLK | TM | CEM | HP | PG30 |
|------|-----|-------|-----|------|------|------|-------|------|
| 12 | 0.8 | 68 | 100 | 25 | 60 | 5 | 10.14 | 1.85 |
| 65% | 80% | 65% | 80% | 30% | 45% | 80% | 15% | 15% |
| STAY | DOC | YG | CW | CREA | MARB | FAT | FPI | |
| 22 | 14 | -0.15 | 19 | 0.62 | 0.35 | 0.00 | 77.82 | |
| 1% | 10% | 20% | 95% | 30% | 50% | 60% | 75% | |

63% GV Balancer® • Homozygous Polled • Homozygous Black
GREAT MOTHER

98

DJS 320L



COW • REG AMGV1587651 • DOB 3/26/23 • TATTOO 320L

| INFINITY 47C
TAU LIGHTYEAR 111F
| MS GUNNISON 3088A

TAU MR IN FOCUS 22Z
TAU MIA 363A
RUPPLE GUNNISON N31
MS PRINCES GIRL 1159Y
CONNEALY CONSENSUS 7229
SANDPOINT BLACKBIRD 0877
S A V FINAL ANSWER 0035
PLATTEMERE QUEENIE 648

ACT BW
80



| CED | BW | WW | YW | MLK | TM | CEM | HP | PG30 |
|------|-----|-------|-----|------|------|------|-------|------|
| 12 | 0.2 | 74 | 117 | 23 | 60 | 6 | 6.76 | 1.19 |
| 65% | 65% | 40% | 35% | 50% | 45% | 65% | 35% | 40% |
| STAY | DOC | YG | CW | CREA | MARB | FAT | FPI | |
| 20 | 13 | -0.04 | 29 | 0.49 | 0.44 | 0.01 | 83.90 | |
| 2% | 25% | 65% | 75% | 55% | 30% | 80% | 40% | |

38% GV Balancer® • Homozygous Polled • Homozygous Black

99

DJS 301L



COW • REG AMGV1586887 • DOB 3/6/23 • TATTOO 301L

| BGGK BLK GOLD PAYLOAD 6152
1136H
| BLACK GOLD LIFELINE 7044D

CTR SANDHILLS 0065X
MS MARBLING 56Y
EGL LIFELINE B101
MS 0069X 405B
TAU MR IN FOCUS 22Z
217X
DVE WOODROW 121D
BAR S PRINCESS 2410

ACT BW
61

| VEGAS 81B
040H
| 842F



| CED | BW | WW | YW | MLK | TM | CEM | HP | PG30 |
|------|------|-------|-----|------|------|------|-------|------|
| 18 | -3.5 | 65 | 99 | 19 | 51 | 9 | 0.69 | 0.96 |
| 5% | 10% | 80% | 80% | 85% | 90% | 15% | 95% | 40% |
| STAY | DOC | YG | CW | CREA | MARB | FAT | FPI | |
| 14 | 11 | -0.01 | 26 | 0.40 | 0.37 | 0.02 | 82.00 | |
| 55% | 75% | 80% | 80% | 75% | 45% | 90% | 50% | |

50% GV Balancer® • Homozygous Polled • Homozygous Black

100

DJS 316L



COW • REG AMGV1586888 • DOB 2023-03-06 • TATTOO 316L

| S A V RAINFALL 6846
FRANK BROADWATER 1006
| VISION BLANCHE 538

COLEMAN CHARLO 0256
S A V BLACKCAP MAY 4136
BRUIN UPROAR 0070
VISION BLANCHE 864
BASIN PAYWEIGHT 1682
MS SAM 536C
16Z
204N

ACT BW
72



| CED | BW | WW | YW | MLK | TM | CEM | HP | PG30 |
|------|------|------|-----|------|------|------|-------|------|
| 13 | -1.7 | 66 | 107 | 24 | 58 | 5 | 8.02 | 0.57 |
| 50% | 25% | 75% | 60% | 40% | 55% | 80% | 25% | 40% |
| STAY | DOC | YG | CW | CREA | MARB | FAT | FPI | |
| 17 | 12 | 0.00 | 35 | 0.43 | 0.63 | 0.01 | 86.26 | |
| 20% | 50% | 80% | 55% | 70% | 10% | 80% | 30% | |

25% GV Balancer® • Homozygous Polled • Homozygous Black
PLENTY OF MARBLING



Swanson Cattle Company Red Angus Heifers



LOT 101

101

1DJS 280K



COW • REG 4748499 • DOB 8/21/22 • TATTOO 280K

| BIEBER CL ATOMIC C218
DUFF RED WOOD 1941
 | BIEBER CL ADELLE 575D

| LSF TAKEOVER 9943W
LSF SRR GILDA C5280
 | LSF SRR GILDA Y1181 A3110

ANDRAS FUSION R236
 BIEBER DATELINE 308Y
 BIEBER HARD DRIVE Y120
 BIEBER ADELLE 297Y
 HXC CONQUEST 4405P
 LSF WIDELoad R5014 U8061
 BIEBER RUSHMORE Y106
 LSF GILDA U8000 Y1181

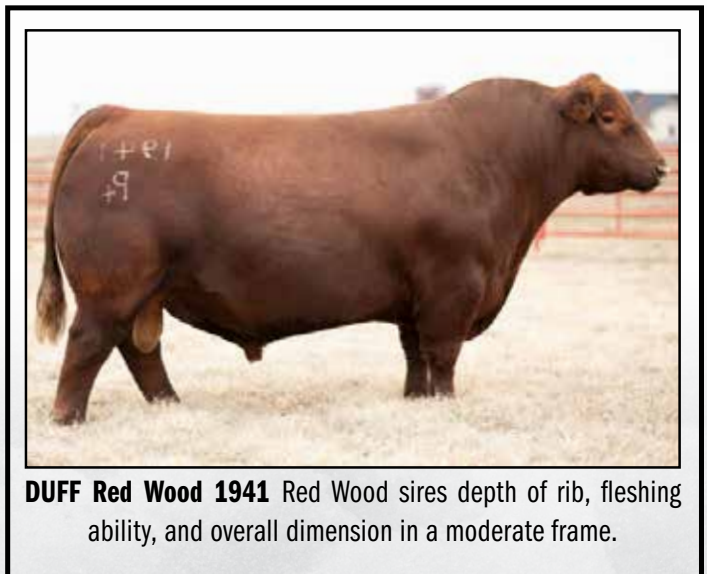
ACT BW
60



| PRO S | HB | GM | CED | BW | WW | YW | MILK | HP |
|-------|-----|------|------|------|-----|------|------|-----|
| 101 | 41 | 60 | 17 | -4.5 | 62 | 107 | 26 | 14 |
| 32% | 71% | 12% | 8% | 10% | 46% | 30% | 45% | 15% |
| ME | CEM | STAY | MARB | YG | CW | REA | FAT | |
| 5 | 7 | 13 | 0.53 | 0.03 | 25 | 0.38 | 0.03 | |
| 62% | 47% | 72% | 27% | 29% | 46% | 10% | 80% | |

100% AR

WINDROW THESE HEIFERS



DUFF Red Wood 1941 Red Wood sires depth of rib, fleshing ability, and overall dimension in a moderate frame.



RED ANGUS HEIFERS



LOT 102

102

1DJS 252K



COW • REG 4748503 • DOB 8/20/22 • TATTOO 252K

| BIEBER CL ATOMIC C218
DUFF RED WOOD 1941
| BIEBER CL ADELLE 575D

| SUTH UNLEADED 140X
LSF SRR TRAV QUEEN C5379
| SRR TRAV QUEEN 214-038

ANDRAS FUSION R236
BIEBER DATELINE 308Y
BIEBER HARD DRIVE Y120
BIEBER ADELLE 297Y

SIX MILE UNLEADED 561U
SUTH CANYON SKY 7043
SRR SUPER CONQUEST 03
SRR TRAV QUEEN 038-887

ACT BW
65



| PRO S | HB | GM | CED | BW | WW | YW | MILK | HP |
|-----------|-----------|-----------|-----------|-------------|-----------|------------|-----------|-----------|
| 88 | 39 | 49 | 13 | -3.1 | 64 | 106 | 26 | 12 |
| 53% | 74% | 28% | 41% | 26% | 37% | 33% | 49% | 31% |

| ME | CEM | STAY | MARB | YG | CW | REA | FAT |
|----------|----------|-----------|-------------|-------------|-----------|-------------|-------------|
| 1 | 6 | 13 | 0.49 | 0.09 | 27 | 0.21 | 0.03 |
| 39% | 81% | 73% | 34% | 60% | 37% | 34% | 73% |

100% AR
DOES IT ALL



BIEBER CL ENERGIZE F121 3958815 Go to Bull for dynamic phenotype, structure and EPD's. Blends the growth curve with added CE and Exceptional carcass value. He is sporting sound structure and good feet.

103

1DJS 251K



COW • REG 4748537 • DOB 9/24/22 • TATTOO 251K

| LEACHMAN PLEDGE A282Z
LSF SRR PRIME INDEX 7503E
| BROWN MS P707 X7583

| BROWN GOLD MINE A7610
LSF SRR RED FAY W9002 D6326
| LSF RED FAY T7010 W9002

LSF NEXTPECTION 0083X
LCOC ZARA TG004
BECKTON NEBULA P P707
C-BAR & BROWN ABIGRACE T714

PARINGA IRON ORE E27
BROWN MS 17P Y7699
FEDDES BIG SKY R9
LSF RED FAY N3038 T7010

ACT BW
70



| PRO S | HB | GM | CED | BW | WW | YW | MILK | HP |
|------------|-----------|-----------|-----------|-------------|-----------|------------|-----------|-----------|
| 104 | 47 | 57 | 11 | -1.0 | 79 | 123 | 23 | 14 |
| 27% | 59% | 16% | 76% | 67% | 4% | 7% | 73% | 15% |

| ME | CEM | STAY | MARB | YG | CW | REA | FAT |
|-----------|----------|-----------|-------------|-------------|-----------|-------------|-------------|
| 10 | 5 | 15 | 0.83 | 0.07 | 25 | 0.10 | 0.01 |
| 86% | 88% | 51% | 3% | 50% | 47% | 58% | 37% |

100% AR
CALVING EASE



LOT 104

104

1DJS 278K



COW • REG 4748511 • DOB 8/25/22 • TATTOO 278K

| BIEBER CL ATOMIC C218
BIEBER CL ENERGIZE F121
| BIEBER CL ADELLE 575D

| LSF SRR REDEMPTION 4210B
LSF SRR VICILA A3044 D6330
| LSF SRR VICILA Y1170 A3044

ANDRAS FUSION R236
BIEBER DATELINE 308Y
BIEBER HARD DRIVE Y120
BIEBER ADELLE 297Y

BROWN JYJ REDEMPTION Y1334
LSF CRYSTAL LA394 W9216
BIEBER RUSHMORE Y106
LSF VICILA R5168 Y1170

ACT BW
59



| PRO S | HB | GM | CED | BW | WW | YW | MILK | HP |
|-----------|-----------|-----------|-----------|-------------|-----------|------------|-----------|-----------|
| 92 | 50 | 43 | 15 | -4.2 | 62 | 107 | 27 | 14 |
| 46% | 54% | 40% | 25% | 13% | 46% | 31% | 42% | 14% |

| ME | CEM | STAY | MARB | YG | CW | REA | FAT |
|----------|----------|-----------|-------------|-------------|-----------|-------------|-------------|
| 3 | 6 | 14 | 0.46 | 0.11 | 21 | 0.08 | 0.03 |
| 48% | 66% | 59% | 40% | 73% | 60% | 63% | 78% |

100% AR
SOUNDNESS



105

1DJS 381L



COW • REG 4857882 • DOB 1/7/23 • TATTOO 381L

| BIEBER CL ATOMIC C218
BIEBER CL ENERGIZE F121
| BIEBER CL ADELLE 575D

| LSF SRR PRIME INDEX 7503E
MS DJS OLEDGE 076H
| LSF SRR RED FAY B4451 D6160

ANDRAS FUSION R236
BIEBER DATELINE 308Y
BIEBER HARD DRIVE Y120
BIEBER ADELLE 297Y

LEACHMAN PLEDGE A282Z
BROWN MS P707 X7583
LSF TAKEOVER 9943W
LSF RED FAY T7066 B4451

ACT BW
70



| PRO S | HB | GM | CED | BW | WW | YW | MILK | HP |
|------------|-----------|-----------|-----------|-------------|-----------|------------|-----------|-----------|
| 102 | 41 | 61 | 15 | -3.8 | 65 | 109 | 25 | 14 |
| 31% | 70% | 12% | 21% | 17% | 35% | 27% | 60% | 11% |

| ME | CEM | STAY | MARB | YG | CW | REA | FAT |
|----------|----------|-----------|-------------|-------------|-----------|-------------|-------------|
| 0 | 6 | 12 | 0.68 | 0.05 | 19 | 0.24 | 0.03 |
| 31% | 76% | 79% | 10% | 38% | 68% | 29% | 77% |

100% AR
FUNCTIONALITY

106

1DJS 384L



COW • REG 4857888 • DOB 1/13/23 • TATTOO 384L

| BIEBER CL ATOMIC C218
BIEBER CL ENERGIZE F121
| BIEBER CL ADELLE 575D

| LSF SRR PRIME INDEX 7503E
MS DJS PLEDGE 085H
| LSF SRR DELLA B4203 D6322

ANDRAS FUSION R236
BIEBER DATELINE 308Y
BIEBER HARD DRIVE Y120
BIEBER ADELLE 297Y

LEACHMAN PLEDGE A282Z
BROWN MS P707 X7583
LSF SRR OVERTHROW 4029B
LSF DELLA Z2129 B4203

ACT BW
67



| PRO S | HB | GM | CED | BW | WW | YW | MILK | HP |
|------------|-----------|-----------|-----------|-------------|-----------|------------|-----------|-----------|
| 108 | 52 | 56 | 15 | -3.7 | 63 | 106 | 25 | 14 |
| 23% | 49% | 17% | 25% | 19% | 43% | 32% | 57% | 11% |

| ME | CEM | STAY | MARB | YG | CW | REA | FAT |
|----------|----------|-----------|-------------|-------------|-----------|-------------|-------------|
| 1 | 6 | 14 | 0.72 | 0.04 | 14 | 0.25 | 0.04 |
| 40% | 66% | 60% | 8% | 34% | 84% | 27% | 84% |

100% AR
EASY FLESHING

107

1DJS 382L



COW • REG 4857884 • DOB 1/16/23 • TATTOO 382L

| BIEBER CL ATOMIC C218
BIEBER CL ENERGIZE F121
| BIEBER CL ADELLE 575D

| LSF SRR PRIME INDEX 7503E
MS DJS PLEDGE 078H
| LSF SRR FLO-MARIE 922 D6552

ANDRAS FUSION R236
BIEBER DATELINE 308Y
BIEBER HARD DRIVE Y120
BIEBER ADELLE 297Y

LEACHMAN PLEDGE A282Z
BROWN MS P707 X7583
5L RIGHT VIEW 1611-40A
SRR FLO-MARIE 922-733

ACT BW
67



| PRO S | HB | GM | CED | BW | WW | YW | MILK | HP |
|------------|-----------|-----------|-----------|-------------|-----------|------------|-----------|-----------|
| 103 | 46 | 58 | 15 | -3.8 | 65 | 107 | 25 | 14 |
| 29% | 62% | 15% | 19% | 17% | 33% | 30% | 57% | 9% |

| ME | CEM | STAY | MARB | YG | CW | REA | FAT |
|----------|----------|-----------|-------------|-------------|-----------|-------------|-------------|
| 2 | 7 | 13 | 0.69 | 0.01 | 21 | 0.28 | 0.02 |
| 44% | 60% | 74% | 9% | 22% | 63% | 22% | 53% |

100% AR
THESE REDS ARE PEAS IN A POD

108

1DJS 386L



COW • REG 4857892 • DOB 1/16/23 • TATTOO 386L

| BIEBER CL ATOMIC C218
BIEBER CL ENERGIZE F121
| BIEBER CL ADELLE 575D

| LSF SRR PRIME INDEX 7503E
MISS SCC PLEDGE 983G
| LSF SRR LAKOTA B4017 D6251

ANDRAS FUSION R236
BIEBER DATELINE 308Y
BIEBER HARD DRIVE Y120
BIEBER ADELLE 297Y

LEACHMAN PLEDGE A282Z
BROWN MS P707 X7583
HXC SURE SHOT 2204Z
LSF LAKOTA Z2342 B4017

ACT BW
62



| PRO S | HB | GM | CED | BW | WW | YW | MILK | HP |
|------------|-----------|-----------|-----------|-------------|-----------|------------|-----------|-----------|
| 110 | 50 | 60 | 17 | -5.6 | 63 | 106 | 26 | 14 |
| 20% | 53% | 12% | 8% | 4% | 44% | 33% | 45% | 14% |

| ME | CEM | STAY | MARB | YG | CW | REA | FAT |
|----------|----------|-----------|-------------|-------------|-----------|-------------|-------------|
| 2 | 7 | 14 | 0.71 | 0.03 | 20 | 0.27 | 0.03 |
| 44% | 42% | 64% | 8% | 28% | 67% | 23% | 68% |

100% AR
NICE SET

109

1DJS 387L



COW • REG 4857894 • DOB 1/16/23 • TATTOO 387L

| BIEBER CL ATOMIC C218
BIEBER CL ENERGIZE F121
| BIEBER CL ADELLE 575D

| LSF SRR PRIME INDEX 7503E
MISS SCC PLEDGE 992G
| LSF SRR DELLA U8051 D6455

ANDRAS FUSION R236
BIEBER DATELINE 308Y
BIEBER HARD DRIVE Y120
BIEBER ADELLE 297Y

LEACHMAN PLEDGE A282Z
BROWN MS P707 X7583
HXC BIG IRON 0024X
LSF DELLA P4078 U8051

ACT BW
56



| PRO S | HB | GM | CED | BW | WW | YW | MILK | HP |
|------------|-----------|-----------|-----------|-------------|-----------|------------|-----------|-----------|
| 111 | 42 | 68 | 18 | -5.9 | 64 | 108 | 26 | 14 |
| 19% | 68% | 6% | 4% | 3% | 40% | 28% | 48% | 14% |

| ME | CEM | STAY | MARB | YG | CW | REA | FAT |
|----------|----------|-----------|-------------|-------------|-----------|-------------|-------------|
| 5 | 8 | 13 | 0.73 | 0.06 | 27 | 0.27 | 0.03 |
| 61% | 38% | 72% | 7% | 45% | 38% | 23% | 69% |

100% AR
BUY THEM ALL

Swanson Cattle Company

38th Annual Bull Sale

MARCH 5, 2024 - 1 PM

AT THE RANCH

OXFORD, NEBRASKA



RED ANGUS HEIFERS

110

1DJS 383L



COW • REG 4857886 • DOB 1/17/23 • TATTOO 383L

| BIEBER CL ATOMIC C218
BIEBER CL ENERGIZE F121
| BIEBER CL ADELLE 575D

| LSF SRR PRIME INDEX 7503E
MS DHS PLEDGE 084H
| LSF SRR MISS KAY Z2318 D6077

ANDRAS FUSION R236
BIEBER DATELINE 308Y
BIEBER HARD DRIVE Y120
BIEBER ADELLE 297Y

LEACHMAN PLEDGE A282Z
BROWN MS P707 X7583
BROWN JY REDEMPTION Y1334
LSF RR MIS KAY 5013 Z2318

ACT BW
72



| PRO S | HB | GM | CED | BW | WW | YW | MILK | HP |
|-------|-----|------|------|------|-----|------|------|-----|
| 110 | 50 | 60 | 15 | -2.9 | 71 | 121 | 27 | 14 |
| 20% | 53% | 12% | 22% | 31% | 15% | 9% | 42% | 16% |
| ME | CEM | STAY | MARB | YG | CW | REA | FAT | |
| 2 | 7 | 14 | 0.67 | 0.05 | 23 | 0.21 | 0.02 | |
| 44% | 62% | 66% | 11% | 38% | 55% | 34% | 59% | |

100% AR

HOTTEST THING GOING

111

1DJS 385L



COW • REG 4857890 • DOB 1/20/23 • TATTOO 385L

| BIEBER CL ATOMIC C218
BIEBER CL ENERGIZE F121
| BIEBER CL ADELLE 575D

| CRUMP POWDER RIVER 7787
MISS SCC POWDER RIVER 981G
| LSF SRR BLKBIRD X0406 D6413

ANDRAS FUSION R236
BIEBER DATELINE 308Y
BIEBER HARD DRIVE Y120
BIEBER ADELLE 297Y

BROWN COMPLETE B238
MDM SUSIE 133-9
LSF NIGHT CALVER 9921W
LSF BLACKBIRD N3080 X0406

ACT BW
69



| PRO S | HB | GM | CED | BW | WW | YW | MILK | HP |
|-------|-----|------|------|------|-----|------|------|----|
| 108 | 49 | 59 | 14 | -3.4 | 71 | 119 | 31 | 15 |
| 22% | 55% | 13% | 32% | 23% | 17% | 11% | 9% | 8% |
| ME | CEM | STAY | MARB | YG | CW | REA | FAT | |
| 6 | 7 | 13 | 0.60 | 0.03 | 26 | 0.37 | 0.03 | |
| 63% | 60% | 68% | 18% | 30% | 41% | 11% | 73% | |

100% AR

EASY CALVING

112

1DJS 388L



COW • REG 4857896 • DOB 1/26/23 • TATTOO 388L

| BIEBER CL ATOMIC C218
BIEBER CL ENERGIZE F121
| BIEBER CL ADELLE 575D

| CRUMP POWDER RIVER 7787
MISS SCC POWDER RIVER 994G
| LSF SRR DELLA B4203 D6322

ANDRAS FUSION R236
BIEBER DATELINE 308Y
BIEBER HARD DRIVE Y120
BIEBER ADELLE 297Y

BROWN COMPLETE B238
MDM SUSIE 133-9
LSF SRR OVERTHROW 4029B
LSF DELLA Z2129 B4203

ACT BW
61



| PRO S | HB | GM | CED | BW | WW | YW | MILK | HP |
|-------|-----|------|------|------|-----|------|------|-----|
| 98 | 44 | 53 | 15 | -4.2 | 63 | 108 | 29 | 13 |
| 38% | 65% | 21% | 21% | 13% | 41% | 29% | 20% | 17% |
| ME | CEM | STAY | MARB | YG | CW | REA | FAT | |
| 7 | 7 | 14 | 0.61 | 0.03 | 19 | 0.31 | 0.03 | |
| 74% | 51% | 64% | 16% | 27% | 69% | 18% | 78% | |

100% AR

STRUCTURE

113

1DJS 380L



COW • REG 4857880 • DOB 2/1/23 • TATTOO 380L

| KJHT POWER TAKE OFF
WLTR OLE RED 11H
| TC PRIMROSE 70B

| LSF SRR PRIME INDEX 7503E
MS DJS PLEDGE 075H
| LSF SRR RAINDANCE Y010 D6361

RED SOO LINE POWER EYE 161X
SRA PAINTBUCKET
RED SSS OLY 554T
NBAR PRIMROSE R541

LEACHMAN PLEDGE A282Z
BROWN MS P707 X7583
LSF RHO TITONKA Z721
LSF RAINDANCE P4002 Y010

ACT BW
60



| PRO S | HB | GM | CED | BW | WW | YW | MILK | HP |
|-------|-----|------|------|------|-----|------|------|-----|
| 81 | 47 | 34 | 15 | -3.5 | 59 | 96 | 26 | 11 |
| 65% | 58% | 60% | 24% | 21% | 59% | 55% | 54% | 59% |
| ME | CEM | STAY | MARB | YG | CW | REA | FAT | |
| 0 | 8 | 14 | 0.44 | 0.05 | 18 | 0.01 | 0.00 | |
| 33% | 40% | 64% | 45% | 38% | 75% | 77% | 23% | |

100% AR

NOWDAYS KIND

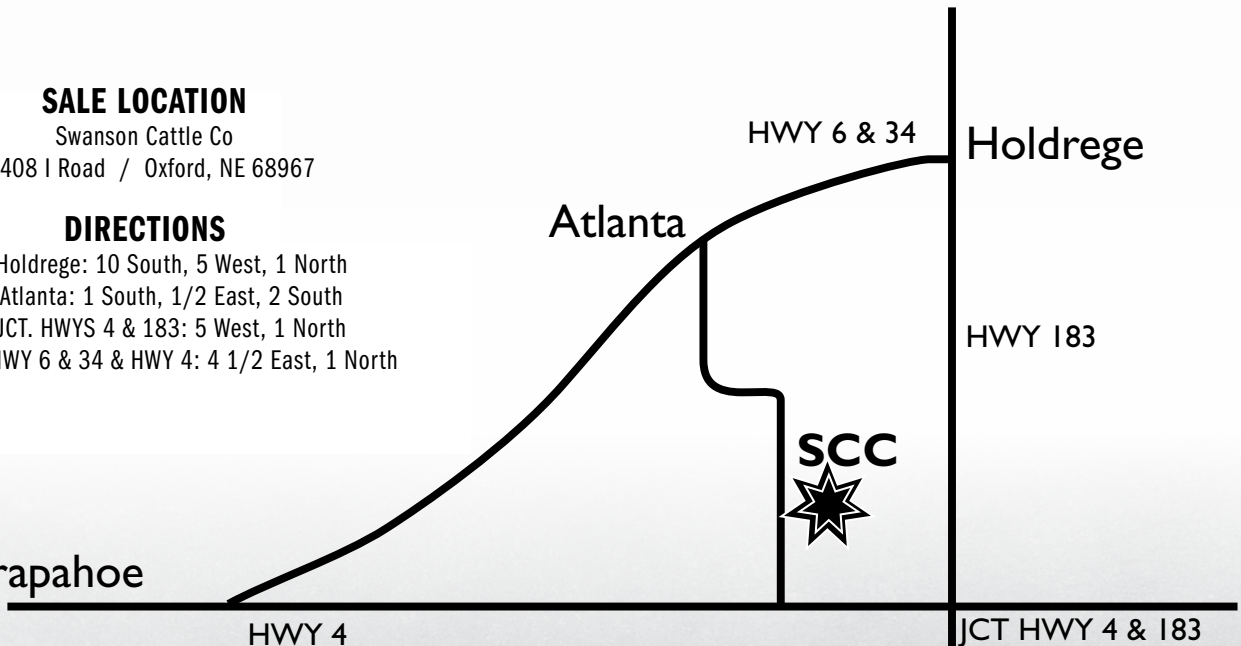
SALE LOCATION

Swanson Cattle Co
72408 I Road / Oxford, NE 68967

DIRECTIONS

From Holdrege: 10 South, 5 West, 1 North
From Atlanta: 1 South, 1/2 East, 2 South
From JCT. HWYS 4 & 183: 5 West, 1 North
From JCT. HWY 6 & 34 & HWY 4: 4 1/2 East, 1 North

Arapahoe



Thank you for your support!



Swanson Cattle Co
72408 I Road
Oxford, NE 68967

Swanson Cattle Company

38th
Annual Production Sale

MARCH 5, 2024

1:00 PM

AT THE RANCH NEAR OXFORD, NE



DJS 139L • BALANCER • AMGV 1578407
Sired by DJS Howard 101H



DJS 130L • BALANCER • AMGV 1578451
Sired by DLW News Flash 8710H



DJS 135L • BALANCER • AMGV 1578452
Sired by Frank Broadwater 1006



DJS 270K • SIMM • ASA 4258282
Sired by KG Justified 3023



DJS 2101 • ANGUS • AAA 20741909
Sired by KG Justified 3023



DJS 272K • RED ANGUS • RAAA 4748523
Sired by Bieber CL Energize F121

