



TOGETHER WITH WARNER BEEF GENETICS, WE ARE  
**YOUR NEBRASKA** *Bull Source*

---

---



**Tuesday, March 7, 2023 • 1:00 PM (CST)**  
**At the Ranch, Oxford, NE**

**37<sup>th</sup> Annual**  
**BULL SALE**



# SCC

## TWO PROGRAMS.TWO SALES.

UNBELIEVABLE OPPORTUNITY

### SWANSON CATTLE COMPANY

**37th Annual Bull Sale**  
**Tuesday, March 7, 2023**  
**1:00 PM (CST)**

**At the Ranch near Atlanta, NE**

### WARNER BEEF GENETICS

**Genetic Investment Bull Sale**  
**Wednesday, March 8, 2023**  
**1:00 PM (CST)**

**At the Ranch near Arapahoe, NE**

## 250 BULLS SELL IN TWO DAYS

- **Age-Advantaged 18 month old and spring yearling**
- **Gelbvieh, Balancer, Angus, Red Angus**
- **Sight Unseen Guarantee - Full Guarantee**
- **Volume Discounts**
- **Coordinated Delivery Options**
- **Sons of breed-leading Sires Sell - Large Sire Groups**

## DVAuction

Broadcasting Real-Time Auctions Watch and Bid Online for FREE!

[www.DVAuction.com](http://www.DVAuction.com)

[support@dvauction.com](mailto:support@dvauction.com)

402-316-5460 / 402-474-5557



## TABLE OF CONTENTS

Balancer Bulls	Lots 1-62
Angus Bulls	Lots 63-91
Red Angus Bulls	Lots 92-109

## SALE DAY PHONES

Jeff Swanson 308-991-0727  
Seth Swanson 308-991-6974  
Riley Rhone 308-655-8248

## SALE LOCATION

Swanson Cattle Co  
72408 I Road / Oxford, NE 68967

## DIRECTIONS

From Holdrege: 10 South, 5 West, 1 North  
From Atlanta: 1 South, 1/2 East, 2 South  
From JCT. HWY 4 & 183: 5 West, 1 North  
From JCT. HWY 6 & 34 & HWY 4: 4 1/2 East, 1 North

## SALE SCHEDULE

9:30 AM Bulls available for viewing  
11:00 AM Complimentary Lunch  
1:00 PM 37th Annual Swanson Cattle Co Bull Sale  
*Bulls available for viewing by appt. any time prior to sale day.*

## AUCTIONEER

Kyle Elwood 785-493-2901  
AGA Rep. Tom Strahm 785-547-7999

## REPRESENTATIVES

Stock Exchange - Guy Peverly 785-456-4390  
Livestock Plus - Randy Rasby 308-539-6195  
Midwest Messenger - Cody Nye 308-760-8588  
Fence Post - Jake St.Amant 308-568-9084

## RANCH HELP

Josh Morten, Zack Swanson, Shay Swanson,  
Danny Elwood, Greg Swanson, Dave Kearney,  
Chris Swanson, Matt Wilken, Gary Wilken, Ryan  
Ludeke, Jared Booe

# 37TH ANNUAL BULL SALE

TUESDAY, MARCH 7, 2023 / 1:00 PM (CST)

**GUARANTEE:** All bulls selling for \$3,500 or more will carry a first breeding season guarantee. If a problem arises, please call us ASAP. If for some reason the bull dies within the first breeding season, we will credit you 50% of the purchase price.

**HERD HEALTH:** All bulls have been footrot vaccinated and will be fertility tested by delivery.

**BULL BOARD:** Free board on all bulls until March 15th. Feeding arrangements are available until May 1st @ \$3.00 per day. We offer free delivery within a 200 mile radius on bull purchases of \$5,000 or more. We will assist with delivery on all purchases. Delivery will start in mid-March.

**SEMEN INTEREST:** SCC is going to retain 50% semen interest in all bulls selling. This means that if semen sales develop on a bull, the buyer and seller would split revenue equally. Also if the seller would want to use the bull for in-herd use, the seller would collect the bull at the seller's expense and the buyer's convenience. The buyer would have all possession rights.

**TERMS OF SALE:** Cash, unless other arrangements are made prior to the sale.

**BIDDING:** All animals sell to the highest bidder. Any disputes or challenges regarding bids shall be settled by the auctioneer and his decision shall be final. Telephoned bids may be forwarded to the auctioneer, representatives, or herdsman and will be handled with strictest confidence. Prior arrangements for telephone bids at sale time must be made.

**LIABILITY:** All precautions possible will be taken to protect the safety of the buyers and others attending the sale. Nevertheless, no responsibility will be assumed by the auctioneer or the host ranch in the event of accidents or of loss or damage of property.

**VOLUME DISCOUNTS:** Purchase 5 or more bulls for a 5% discount.

**ONLINE BIDDING:** The sale will be live on DVAuction. Please register a few days in advance of the sale. Call 402-316-5460 for assistance getting signed up to bid.



# WELCOME TO THE SWANSON CATTLE BULL SALE

## DEAR VALUED CUSTOMER.

We would like to welcome you to our 37th annual production sale. We have been in the Gelbvieh breed since 1984. Then later started raising balancers going back to before they were called balancers. We have fed 40 plus pens of raised cattle over the years. The cattle normally gain from 3.5 to 4.0 pounds a day, yield from 64 to over 65%. We have pens grading from 90 to 100% choice or better, conversions as low as 5.10. Last year we had a pen command a \$149 a head premium. Our cows are strictly culled for disposition, feet, and udders. These females also have a lot of carcass merit, maternal instincts, performance with a lot of calving ease.

We are excited about the Howard 101H and the RIP 172G sire groups. These cattle pass on muscle, fleshing ability, soundness in a complete package. These bulls will sire top notch feeder calves and excellent replacement heifers with a program behind them. The bulls are developed on a ration to grow them towards their potential.

This drought has made it difficult and we appreciate our loyal customers and friendships. With the recent moisture we hope that the drought is beginning to break. We should see incredible prices when it does.

We look forward to spending the day with you and serving you lunch. Feel free to stop by and see the bulls prior to the sale. Thank you for considering our program. We look forward to seeing you!

Jeff & Denise Swanson  
Seth & Jami Swanson







DJS HOWARD 101H Sire of Lots 1-20.

*Reference*

**DJS HOWARD 101H**

58% GV Balancer Bull      Heterozygous Black      Homozygous Polled  
1/25/2020      DJS 101H      1494112

S A V RESOURCE 1441	RITO 707 OF IDEAL 3407 7075
TAU MR RESOURCE 102E	S A V BLACKCAP MAY 4136
TAU MS. GUNNISON 106R 3147A	TAU GUNNISON 106R
CIRS 12LW ET	TAU MS SOLUTION 9140W
AHL LEE ANN	EGL FOSTERS LO17 ET
VER LEE ANN 346Z	JBOB 1222G ET
	CONNEALY STIMULUS 8419
	VER LEE ANN 121X

CED	BW	WW	YW	MK	TM	HP	STAY	YG	CW	REA	MB	SCOW	FPI
6.2	2.3	74	109	21	58	0.87	15.8	-0.14	39	0.68	0.18	99.76	73.07
>95%	95%	40%	55%	40%	35%	90%	30%	25%	40%	25%	80%	50%	85%

Howard is an up and coming superstar. His dam 489B is phenomenal sporting a great udder, sharp front end, big ribs and heavy rear quarter. Howard moves like a cat, he is big topped, deep sided, and heavily muscled. His daughters look great. He definitely is one of the best ever raised here.



AHL LEE ANN Dam of DJS Howard 101H.



# Swanson Cattle Co. *Balancer Bulls*



DJS 113K Sells as Lot 1.

<b>1</b>	<b>DJS 113K</b>	<b>GGP</b>											
	48% GV Balancer Bull 1/28/2022	Heterozygous Black DJS 113K	Homozygous Polled 1551157										
	TAU MR RESOURCE 102E	S A V RESOURCE 1441 TAU MS. GUNNISON 106R 3147A CIRS 12LW ET VER LEE ANN 346Z CONNEALY CONSENSUS 7229 TAU GUNNISON 5151R RITO 616 QF 4B20 6807 DJS 108T											
<b>DJS HOWARD 101H</b>	AHL LEE ANN TAU OUTRIGHT 162A												
<b>DJS 688D</b>	DJS 16W												
<b>CE</b>	<b>BW</b>	<b>WW</b>	<b>YW</b>	<b>MK</b>	<b>TM</b>	<b>HP</b>	<b>STAY</b>	<b>YG</b>	<b>CW</b>	<b>REA</b>	<b>MB</b>	<b>\$COW</b>	<b>FPI</b>
7.5	1.8	76	120	24	62	4.31	16.4	-0.12	40	0.61	0.39		81.2
>95%	95%	30%	25%	15%	15%	65%	30%	25%	30%	25%	45%	%	50%
											<b>adj. WW</b>		
											<b>92</b>	<b>702 (110)</b>	

702 WW. Big RE EPD, Game Changer







DJS 160K Sells as Lot 3.



DJS 168K Sells as Lot 2.

**2 DJS 168K** ♂GGP

29% GV Balancer Bull													
Heterozygous Black							Homozygous Polled						
DJS 168K 1551176													
TAU MR RESOURCE 102E							S A V RESOURCE 1441						
DJS HOWARD 101H							TAU MS. GUNNISON 106R 3147A						
AHL LEE ANN							CIRS 12LW ET						
BAR S COWTOWN 2903							VER LEE ANN 346Z						
MS SCC COWTOWN 859							B C LOOKOUT 7024						
LADY HANS TRAVEL 9028							BAR S BLACKCAP 990Z						
							S A V 8180 TRAVELER 004						
							LADY HANS CHARGER 674						
CED	BW	WW	YW	MK	TM	HP	STAY	YG	CW	REA	MB	SCOW	FPI
9	0.7	77	125	23	62	2.03	11.3	-0.04	41	0.57	0.37		82.75
95%	80%	25%	15%	25%	15%	85%	90%	60%	30%	35%	50%	%	40%
BW							adj. WW						
83							667 (104)						

Here's the Beef. Thick and Deep and Sound. Full of Muscle, great mother. Herdsire Look

**3 DJS 160K** ♂GGP

29% GV Balancer Bull													
Heterozygous Black							Homozygous Polled						
DJS 160K 1551175													
TAU MR RESOURCE 102E							S A V RESOURCE 1441						
DJS HOWARD 101H							TAU MS. GUNNISON 106R 3147A						
AHL LEE ANN							CIRS 12LW ET						
BALDRIDGE WAYLON W34							VER LEE ANN 346Z						
MS SCC WAYLON 320B							GAR-EGL PROTEGE						
RR BARBARA 6443							BALDRIDGE BLACKCAP T163						
							TC FREEDOM 104						
							HA BARBARA 2543						
CED	BW	WW	YW	MK	TM	HP	STAY	YG	CW	REA	MB	SCOW	FPI
10.9	0.8	81	126	18	59	5.63	13.3	0.09	55	0.46	0.41		85.21
75%	80%	15%	15%	70%	30%	40%	70%	95%	4%	60%	40%	%	30%
BW							adj. WW						
85							651 (102)						

Soggy Made, Top 4% CW, Top 10% WW, Herdsire, Very good Dam.





DJS 115K Sells as Lot 5.

**4 DJS 148K** **⚡GGP**  
 49% GV Balancer Bull Heterozygous Black Homozygous Polled  
 1/27/2022 DJS 148K 1551173

TAU MR RESOURCE 102E S A V RESOURCE 1441  
 TAU MS. GUNNISON 106R 3147A  
**DJS HOWARD 101H** CIRS 12LW ET  
 AHL LEE ANN VER LEE ANN 346Z  
 DJS VEGAS 81B TAU TAU MR IN FOCUS 22Z  
**DJS 839F** DJS 217X  
 TAU OUTRIGHT 162A  
 DJS 649D DJS 91W

CED	BW	WW	YW	MK	TM	HP	STAY	YG	CW	REA	MB	SCOW	FPI
8.8	0.3	75	119	19	56	3.62	13	0.05	43	0.4	0.5		84.05
95%	70%	30%	25%	65%	50%	65%	70%	90%	25%	70%	20%	%	35%
											<b>BW</b>	<b>adj. WW</b>	
											<b>85</b>	<b>616 (96)</b>	

Top 20% Marbling.

**5 DJS 115K** **⚡GGP**  
 53% GV Balancer Bull Heterozygous Black Homozygous Polled  
 1/24/2022 DJS 115K 1551159

TAU MR RESOURCE 102E S A V RESOURCE 1441  
 TAU MS. GUNNISON 106R 3147A  
**DJS HOWARD 101H** CIRS 12LW ET  
 AHL LEE ANN VER LEE ANN 346Z  
 BGGR BGGR COHESION 5153C BGGR BGGR GRAVITY 803A  
**DJS 756E** BGGR MS LOOKOUT 930W  
 ELK CK MAVERICK 850N  
 L B D R MONTANA 8043 DV  
 DJS 167S

CED	BW	WW	YW	MK	TM	HP	STAY	YG	CW	REA	MB	SCOW	FPI
7.3	1.2	70	102	18	53	4.05	11.6	-0.06	42	0.53	0.36		75.88
>95%	85%	55%	70%	70%	70%	65%	85%	50%	25%	40%	50%	%	80%
											<b>BW</b>	<b>adj. WW</b>	
											<b>88</b>	<b>619 (97)</b>	

Very Stylish and Attractive.



DJS 148K Sells as Lot 4.



**6 DJS 140K** ⚔GGP

54% GV Balancer Bull  
1/19/2022

Homozygous Black  
DJS 140K

Homozygous Polled  
1551170

TAU MR RESOURCE 102E

**DJS HOWARD 101H**

AHL LEE ANN  
TAU OUTRIGHT 162A

**DJS 676D**

DJS 724T

S A V RESOURCE 1441  
TAU MS. GUNNISON 106R 3147A  
CIRS 12LW ET  
VER LEE ANN 346Z  
CONNEALY CONSENSUS 7229  
TAU GUNNISON 5151R  
XXB TITUS 880K  
TS BARBARA 1112

CED	BW	WW	YW	MK	TM	HP	STAY	YG	CW	REA	MB	\$COW	FPI
11.4	-0.5	60	92	19	49	3.54	13.2	-0.07	33	0.47	0.6		79.4
75%	50%	90%	90%	65%	85%	65%	70%	45%	60%	55%	10%	%	60%
<b>BW</b>											<b>adj. WW</b>		
81											616 (96)		

Good Cow Family.



DJS 140K Sells as Lot 6.

**7 DJS 102K** ⚔GGP

66% GV Balancer Bull  
1/17/2022

Heterozygous Black  
DJS 102K

Polled  
1551153

TAU MR RESOURCE 102E

**DJS HOWARD 101H**

AHL LEE ANN  
TAU GUNSLINGER 19U

**DJS 304A**

DJS 92N

S A V RESOURCE 1441  
TAU MS. GUNNISON 106R 3147A  
CIRS 12LW ET  
VER LEE ANN 346Z  
SGRI HONOR ROLL S232  
TAU GUNNISON 5151R  
HAD E2 SQUARE  
A ALCORN STACKER G110

CED	BW	WW	YW	MK	TM	HP	STAY	YG	CW	REA	MB	\$COW	FPI
9	0.2	58	79	19	48	3.86	16	-0.06	16	0.26	0.22		66.55
95%	70%	95%	>95%	65%	90%	65%	30%	50%	>95%	90%	85%	%	>95%
<b>BW</b>											<b>adj. WW</b>		
77											600 (94)		

Howard son. Showing some calving ease.



**8 DJS 136K** ⚔GGP

41% GV Balancer Bull  
2/26/2022

Homozygous Black  
DJS 136K

Polled  
1551166

TAU MR RESOURCE 102E

**DJS HOWARD 101H**

AHL LEE ANN  
BAR S FINAL ANSWER 1328

**DJS 650D**

DJS 467B

S A V RESOURCE 1441  
TAU MS. GUNNISON 106R 3147A  
CIRS 12LW ET  
VER LEE ANN 346Z  
S A V FINAL ANSWER 0035  
BAR S EDELLA 3149  
PLA MR HAULER 12X ET  
DJS 24W

CED	BW	WW	YW	MK	TM	HP	STAY	YG	CW	REA	MB	\$COW	FPI
10.6	0.2	63	98	20	52	1.09	13.7	-0.14	31	0.69	0.21		71.3
75%	70%	85%	75%	55%	75%	95%	55%	20%	65%	15%	85%	%	95%
<b>BW</b>											<b>adj. WW</b>		
80											652 (102)		

Top 15% REA, Top 20% YG.



DJS 136K Sells as Lot 8.

**9 DJS 138K** ⚔GGP

50% GV Balancer Bull  
1/16/2022

Homozygous Black  
DJS 138K

Polled  
1551168

TAU MR RESOURCE 102E

**DJS HOWARD 101H**

AHL LEE ANN  
TAU TAU MR IN FOCUS 22Z

**DJS 660D**

DJS 24W

S A V RESOURCE 1441  
TAU MS. GUNNISON 106R 3147A  
CIRS 12LW ET  
VER LEE ANN 346Z  
MYTTY IN FOCUS  
TAU MS GUNNISON 028X  
XXB LUDACRIS 039S ET  
DJS 320S

CED	BW	WW	YW	MK	TM	HP	STAY	YG	CW	REA	MB	\$COW	FPI
12.6	-1.1	58	81	20	49	2.09	18.3	0.12	21	0.06	0.47		74.84
45%	35%	95%	>95%	55%	85%	85%	10%	>95%	95%	>95%	25%	%	85%
<b>BW</b>											<b>adj. WW</b>		
87											628 (98)		

Top 4% Stayability, Top 25% Marbling.



DJS 138K Sells as Lot 9.



# Swanson Cattle Co. *Balancer Bulls*

## 10 DJS 139K XGGP

54% GV Balancer Bull 1/18/2022													Homozygous Black DJS 139K		Homozygous Polled 1551169		
TAU MR RESOURCE 102E													S A V RESOURCE 1441 TAU MS. GUNNISON 106R 3147A CIRS 12LW ET VER LEE ANN 346Z CONNEALY CONSENSUS 7229 TAU GUNSLINGER 19U TAU GUNSLINGER 19U T J BANDY ERICA 839				
DJS HOWARD 101H													AHL LEE ANN TAU OUTRIGHT 162A				
DJS 663D													DJS 183Z				
CED	BW	WW	YW	MK	TM	HP	STAY	YG	CW	REA	MB	\$COW	FPI				
8.8	1.3	69	110	19	54	3.98	16.9	0.02	44	0.46	0.38		76.48				
95%	90%	60%	50%	65%	60%	65%	15%	80%	20%	60%	45%	%	75%				
BW													adj. WW				
85													626 (98)				

Top 15% Stayability, Top 20% CW.

## 12 DJS 123K XGGP

49% GV Balancer Bull 2/26/2022													Heterozygous Black DJS 123K		Homozygous Polled 1551161		
TAU MR RESOURCE 102E													S A V RESOURCE 1441 TAU MS. GUNNISON 106R 3147A CIRS 12LW ET VER LEE ANN 346Z TAU TAU MR IN FOCUS 22Z DJS 217X TAU OUTRIGHT 162A DJS 16W				
DJS HOWARD 101H													AHL LEE ANN DJS VEGAS 81B				
DJS 819F													DJS 688D				
CED	BW	WW	YW	MK	TM	HP	STAY	YG	CW	REA	MB	\$COW	FPI				
10.5	-0.3	67	97	23	56	3.43	16.1	-0.04	27	0.19	0.43		78.72				
85%	55%	70%	80%	25%	50%	75%	30%	60%	80%	95%	35%	%	65%				
BW													adj. WW				
77													696 (109)				

Top 4% Stayability, Top 25% Marbling.

## 14 DJS 158K XGGP

29% GV Balancer Bull 2/28/2022													Heterozygous Black DJS 158K		Homozygous Polled 1551174		
TAU MR RESOURCE 102E													S A V RESOURCE 1441 TAU MS. GUNNISON 106R 3147A CIRS 12LW ET VER LEE ANN 346Z G A R RETAIL PRODUCT CIRCLE S EISA ERICA 6073 S V F TRAVELER 112G PLS PDR BURGESS A156				
DJS HOWARD 101H													AHL LEE ANN THOMAS RETAIL PRODUCT 9593				
BOX B BURGESS 1216													EPL 112G BURGESS L028				
CED	BW	WW	YW	MK	TM	HP	STAY	YG	CW	REA	MB	\$COW	FPI				
10.8	-0.9	70	114	21	56	1.3	14.5	0.08	40	0.22	0.55		84.8				
75%	40%	55%	40%	40%	50%	95%	55%	95%	30%	95%	15%	%	30%				
BW													adj. WW				
81													694 (108)				

Top 30% CW, Top 15% Marbling, Nearly 700lb WW.

## 16 DJS 114K XGGP

52% GV Balancer Bull 1/22/2022													Homozygous Black DJS 114K		Homozygous Polled 1551158		
TAU MR RESOURCE 102E													S A V RESOURCE 1441 TAU MS. GUNNISON 106R 3147A CIRS 12LW ET VER LEE ANN 346Z G A R INTEGRITY EGL G565 B C MATRIX 4132 TJB VELVET MOON 226M - ET				
DJS HOWARD 101H													AHL LEE ANN XXB LUDACRIS 039S ET				
DJS 733E ET													TJB VELVET 912U ET				
CED	BW	WW	YW	MK	TM	HP	STAY	YG	CW	REA	MB	\$COW	FPI				
7.4	2.5	76	110	17	55	0.29	17.8	-0.09	32	0.52	0.24	110.71	74.82				
>95%	>95%	30%	50%	80%	55%	>95%	10%	40%	60%	45%	80%	35%	85%				
BW													adj. WW				
92													647 (101)				

Top 25% WW & YW, Top 10% Stayability, Great Pedigree.

## 11 DJS 135K XGGP

41% GV Balancer Bull 2/28/2022													Homozygous Black DJS 135K		Homozygous Polled 1551165		
TAU MR RESOURCE 102E													S A V RESOURCE 1441 TAU MS. GUNNISON 106R 3147A CIRS 12LW ET VER LEE ANN 346Z S A V BISMARCK 5682 GCC MYTTY IN FOCUS 7603 XXB LUDACRIS 039S ET DJS 252X				
DJS HOWARD 101H													AHL LEE ANN GCC BISMARCK 032				
DJS 517C													DJS 369A				
CED	BW	WW	YW	MK	TM	HP	STAY	YG	CW	REA	MB	\$COW	FPI				
9.6	3	75	104	21	59	0.75	12.3	0.03	28	0.17	0.37		77.05				
85%	>95%	30%	65%	40%	30%	95%	85%	85%	75%	>95%	50%	%	75%				
BW													adj. WW				
90													689 (107)				

Big WW, Supurb Dam.

## 13 DJS 137K XGGP

54% GV Balancer Bull 1/14/2022													Homozygous Black DJS 137K		Polled 1551167		
TAU MR RESOURCE 102E													S A V RESOURCE 1441 TAU MS. GUNNISON 106R 3147A CIRS 12LW ET VER LEE ANN 346Z TAU GUNSLINGER 19U MISS 004-76T				
DJS HOWARD 101H													AHL LEE ANN DJS DERRINGER 96X				
DJS 658D													407				
CED	BW	WW	YW	MK	TM	HP	STAY	YG	CW	REA	MB	\$COW	FPI				
11	0.3	61	91	26	56	-0.92	11	-0.14	33	0.57	0.21		70.25				
75%	70%	90%	90%	10%	50%	>95%	90%	20%	60%	35%	85%	%	95%				
BW													adj. WW				
87													637 (99)				

Powerful bull with calving ease.

## 15 DJS 175K XGGP

54% GV Balancer Bull 2/1/2022													Homozygous Black DJS 175K		Homozygous Polled 1551218		
TAU MR RESOURCE 102E													S A V RESOURCE 1441 TAU MS. GUNNISON 106R 3147A CIRS 12LW ET VER LEE ANN 346Z S A V RESOURCE 1441 TAU MS. GUNNISON 106R 3147A DJS DERRINGER 96X DJS 24W				
DJS HOWARD 101H													AHL LEE ANN TAU MR RESOURCE 102E				
DJS 940G													DJS 240Z				
CED	BW	WW	YW	MK	TM	HP	STAY	YG	CW	REA	MB	\$COW	FPI				
9	-1.3	55	88	21	48	0.28	15.9	-0.11	14	0.31	0.19		67.27				
95%	35%	>95%	95%	40%	90%	>95%	30%	30%	>95%	85%	90%	%	>95%				
BW													adj. WW				
80													626 (98)				

These Howard Calves are Stout Made and Sound.

## 17 DJS 145K XGGP

47% GV Balancer Bull 2/7/2022													Homozygous Black DJS 145K		Homozygous Polled 1551172		
TAU MR RESOURCE 102E													S A V RESOURCE 1441 TAU MS. GUNNISON 106R 3147A CIRS 12LW ET VER LEE ANN 346Z S A V FINAL ANSWER 0035 EGL ESTELLE X014 XXB LUDACRIS 039S ET MS SCC BOYD NEW DAY-201X				
DJS HOWARD 101H													AHL LEE ANN EGL EGL LIFELINE B101				
DJS 828F													DJS 315B				
CED	BW	WW	YW	MK	TM	HP	STAY	YG	CW	REA	MB	\$COW	FPI				
10.7	-0.2	60	90	19	49	1.63	14.2	-0.07	34	0.44	0.25		70.2				
75%	60%	90%	90%	65%	85%	85%	55%	45%	55%	60%	80%	%	>95%				
BW													adj. WW				
83													617 (96)				

Breed greats in this Pedigree.



# Swanson Cattle Co. *Balancer Bulls*



## 18 DJS 143K ♂GGP

41% GV Balancer Bull 1/18/2022 Homozygous Black DJS 143K Homozygous Polled 1551171

TAU MR RESOURCE 102E S A V RESOURCE 1441  
 DJS HOWARD 101H TAU MS. GUNNISON 106R 3147A  
CIRS 12LW ET  
 AHL LEE ANN VER LEE ANN 346Z  
 AHL LONG HAUL MÖHNEN LONG HAUL 502  
 DJS 744E AHL PRIMROSE 71W  
GCC BISMARCK 032  
DJS 369A

CE	BW	WW	YW	MK	TM	HP	STAY	YG	CW	REA	MB	\$COW	FPI
10.9	-0.4	63	93	21	52	1.12	11.8	0.08	36	0.29	0.57		79.3
75%	55%	85%	85%	40%	75%	95%	85%	95%	45%	90%	10%	%	60%
<b>BW</b>											<b>adj. WW</b>		
82											615 (96)		

Top 15% Marbling.

DJS 104K Sells as Lot 19.

## 19 DJS 104K ♂GGP

51% GV Balancer Bull 1/22/2022 Heterozygous Black DJS 104K Homozygous Polled 1551154

TAU MR RESOURCE 102E S A V RESOURCE 1441  
 DJS HOWARD 101H TAU MS. GUNNISON 106R 3147A  
CIRS 12LW ET  
 AHL LEE ANN VER LEE ANN 346Z  
 TAU TAU MR IN FOCUS 22Z MYTTY IN FOCUS  
 DJS 404B TAU MS GUNNISON 028X  
PCCI POWER PAC 9070J  
PLATTEMERE QUEENIE 647

CE	BW	WW	YW	MK	TM	HP	STAY	YG	CW	REA	MB	\$COW	FPI
6.5	-0.5	60	93	18	48	1.45	17.9	-0.14	20	0.47	0.22	110.38	68.93
>95%	50%	90%	85%	70%	90%	95%	10%	20%	95%	55%	85%	35%	>95%
<b>BW</b>											<b>adj. WW</b>		
92											607 (95)		

Top 10% Stayability, Top 20% YG.

## 20 DJS 105K ♂GGP

48% GV Balancer Bull 1/28/2022 Heterozygous Black DJS 105K Homozygous Polled 1551155

TAU MR RESOURCE 102E S A V RESOURCE 1441  
 DJS HOWARD 101H TAU MS. GUNNISON 106R 3147A  
CIRS 12LW ET  
 AHL LEE ANN VER LEE ANN 346Z  
 CONNEALY IN FOCUS 4925 MYTTY IN FOCUS  
 DJS 421B BLACK CANA OF CONANGA 206  
TAU GUNSLINGER 19U  
DJS 92N

CE	BW	WW	YW	MK	TM	HP	STAY	YG	CW	REA	MB	\$COW	FPI
10.3	-0.3	66	96	18	51	3.9	21	-0.14	28	0.63	0.14		70.85
85%	55%	70%	80%	70%	80%	65%	1%	20%	75%	25%	95%	%	95%
<b>BW</b>											<b>adj. WW</b>		
81											612 (95)		

Top 1% Stayability, Top 20% YG, Top 25% REA.





# Swanson Cattle Co. *Balancer Bulls*



DJS 170K Sells as Lot 21.

## 21 DJS 170K ET

54% GV Balancer Bull  
1/14/2022

♂GGP

Homozygous Black  
DJS 170K

Homozygous Polled  
1555076

DLW COPPERHEAD 4109E

SEPT COPPERFIELD ET

DJS DJS RIP 172G

DLW MS INDUSTRY

DJS 784E  
CIRS 12LW ET

TAU MR CONSENSUS 21C ET  
DJS 228W

AHL LEE ANN

EGL FOSTERS L017 ET

VER LEE ANN 346Z

JBOB 1222G ET  
CONNEALY STIMULUS 8419  
VER LEE ANN 121X

CED	BW	WW	YW	MK	TM	HP	STAY	YG	CW	REA	MB	\$COW	FPI
8.8	1.1	70	108	22	57	2.67	17.4	-0.17	44	0.67	0.43		79.44
95%	85%	55%	55%	35%	45%	75%	15%	10%	20%	15%	35%	%	60%
BW											adj. WW		
83											646 ( )		

ET Calf by Rip x 489B, Herdsire Potential, Great Phenotype, Balanced Numbers, 489B is the Dam of Howard an Exceptional Female.

## Reference

### DJS DJS RIP 172G

42% GV Balancer Bull  
9/19/2019

Homozygous Black  
DJS 172G

Homozygous Polled  
1494652

SEPT COPPERFIELD ET

GGGE 3G SMOKE N' MIRRORS

DLW COPPERHEAD 4109E

DLW MS INDUSTRY  
TAU MR CONSENSUS 21C ET

SEPT RAZZMATAZZ ET  
DLW INDUSTRY 301X  
DLW MS NET WORTH 199Y OF 303  
CONNEALY CONSENSUS 7229  
TAU MISS RODEO DRIVE 321N

DJS 784E

DJS 228W

DJS 359L

CED	BW	WW	YW	MK	TM	HP	STAY	YG	CW	REA	MB	\$COW	FPI
6.1	2.8	76	118	21	59	5.21	14.8	-0.09	30	0.47	0.26		75.57
>95%	>95%	35%	35%	40%	30%	50%	40%	40%	65%	55%	70%	%	75%

Sire of Lots 21-31. Rip is siring big performing cattle that are sound structured and attractive. The females have that broody look and the sons are powerful. The Rip Bulls should sire fast growing feeder cattle or excellent females.







DJS 151K Sells as Lot 23.



AHL LEE ANN DAM of Lot 22.



DJS 173K ET Sells as Lot 22.

**22 DJS 173K ET** ♂GGP

54% GV Balancer Bull Heterozygous Black Homozygous Polled  
1/17/2022 DJS 173K 1555079

DLW COPPERHEAD 4109E SEPT COPPERFIELD ET  
DJS DJS RIP 172G DLW MS INDUSTRY  
TAU MR CONSENSUS 21C ET  
DJS 784E DJS 228W  
CIRS 12LW ET EGL FOSTERS LO17 ET  
AHL LEE ANN JBOB 1222G ET  
VER LEE ANN 346Z CONNEALY STIMULUS 8419  
VER LEE ANN 121X

CED	BW	WW	YW	MK	TM	HP	STAY	YG	CW	REA	MB	SCOW	FPI
11.2	-2	67	98	22	55	2.67	17.2	-0.08	28	0.48	0.23	%	76.45
75%	20%	70%	75%	35%	55%	75%	15%	45%	75%	55%	85%	%	75%
<b>BW</b>											<b>adj. WW</b>		
88											619 ()		

Flush Brothers to 170k, a product of the Best of my Best, Rip and 489B

**23 DJS 151K** ♂GGP

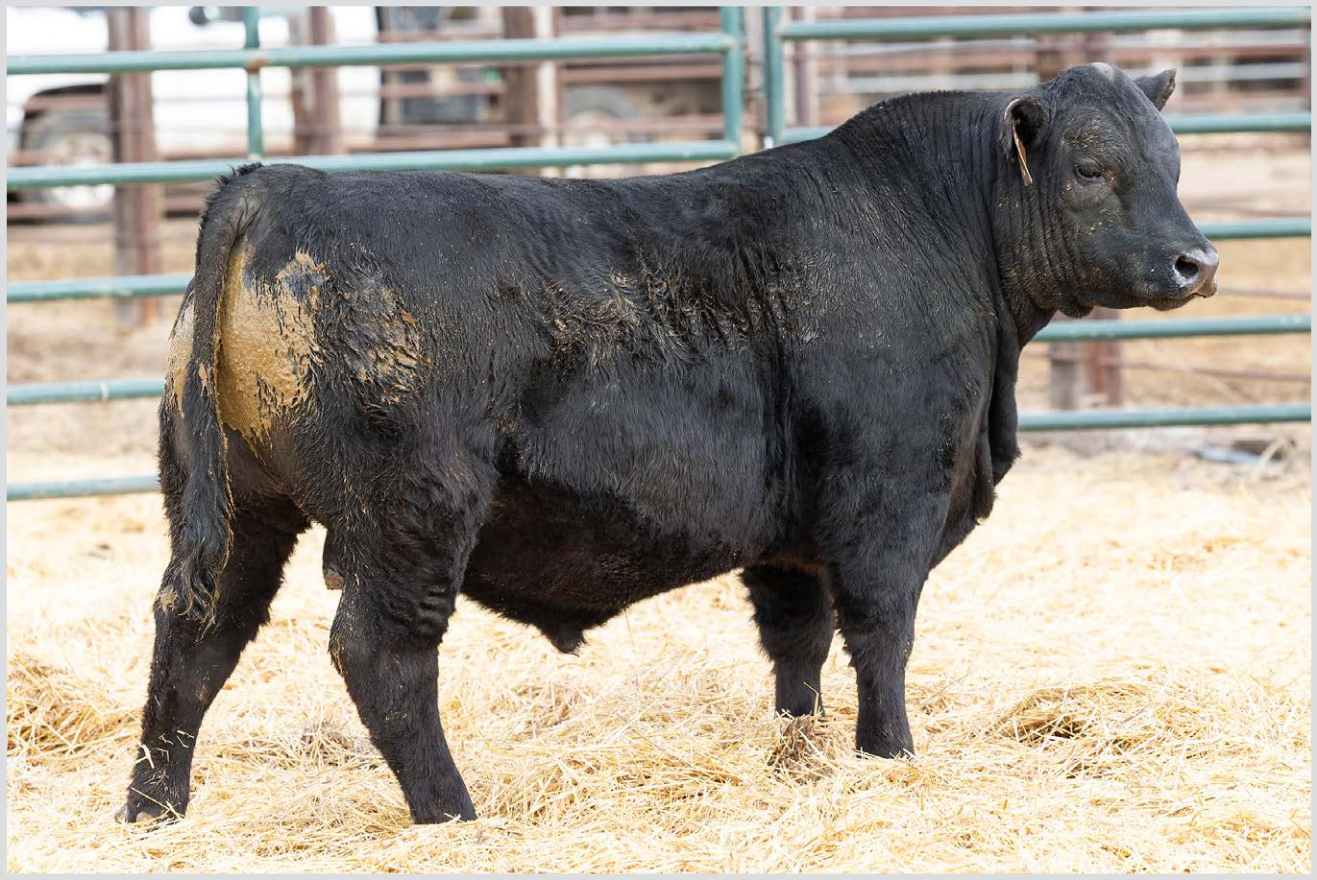
44% GV Balancer Bull Homozygous Black Homozygous Polled  
1/20/2022 DJS 151K 1555050

DLW COPPERHEAD 4109E SEPT COPPERFIELD ET  
DJS DJS RIP 172G DLW MS INDUSTRY  
TAU MR CONSENSUS 21C ET  
DJS 784E DJS 228W  
DLW COPPERHEAD 4109E SEPT COPPERFIELD ET  
DJS 944G DLW MS INDUSTRY  
TAU OUTRIGHT 162A  
DJS 509C 113

CED	BW	WW	YW	MK	TM	HP	STAY	YG	CW	REA	MB	SCOW	FPI
4.3	2	69	114	21	55	5.9	13.9	-0.09	32	0.31	0.25	%	72.12
>95%	95%	60%	40%	40%	55%	40%	55%	40%	60%	85%	80%	%	95%
<b>BW</b>											<b>adj. WW</b>		
89											619 (97)		

Big Top Thick and Deep, Herdsire out of a very high producing Cow.





DJS 152K Sells as Lot 24.

**24 DJS 152K**

34% GV Percentage Bull  
1/23/2022

Homozygous Black  
DJS 152K

ØGGP  
Homozygous Polled  
1555051

DLW COPPERHEAD 4109E SEPT COPPERFIELD ET  
DJS DJS RIP 172G DLW MS INDUSTRY  
DJS 784E TAU MR CONSENSUS 21C ET  
TAU MR RESOURCE 102E DJS 228W  
S A V RESOURCE 1441  
DJS 947G TAU MS. GUNNISON 106R 3147A

CE	BW	WW	YW	MK	TM	HP	STAY	YG	CW	REA	MB	\$COW	FPI
8.3	2	69	106	19	54	2.62	15	0.05	26	0.28	0.6		80.59
95%	95%	55%	50%	65%	60%	80%	45%	95%	80%	95%	5%	%	40%
BW											adj. WW		
87											620 (97)		

Built like a Brick \_\_\_\_\_ house the 947G Female is a Very Good young Cow, Top 10% Marbling.

**25 DJS 117K**

45% GV Balancer Bull  
1/17/2022

Homozygous Black  
DJS 117K

Homozygous Polled  
1555047

DLW COPPERHEAD 4109E SEPT COPPERFIELD ET  
DJS DJS RIP 172G DLW MS INDUSTRY  
DJS 784E TAU MR CONSENSUS 21C ET  
BGGR BGGR COHESION 5153C DJS 228W  
BGGR BGGR GRAVITY 803A  
DJS 771E BGGR MS LOOKOUT 930W  
DLW GOOD BOY 201U  
DJS 164Y DJS 182T

CE	BW	WW	YW	MK	TM	HP	STAY	YG	CW	REA	MB	\$COW	FPI
8.7	1.5	69	99	20	55	5.28	11.6	-0.1	25	0.45	0.33		74.8
95%	90%	60%	75%	55%	55%	50%	85%	35%	85%	60%	60%	%	85%
BW											adj. WW		
83											609 (95)		

Stylish looking Bull, Excellent Dam.



DJS 117K Sells as Lot 25.



**26 DJS 149K** XGGP

<b>46% GV Balancer Bull</b> 1/18/2022	<b>Homozygous Black</b> DJS 149K	<b>Homozygous Polled</b> 1555049
DLW COPPERHEAD 4109E	SEPT COPPERFIELD ET	
DJS DJS RIP 172G	DLW MS INDUSTRY	
DJS 784E	TAU MR CONSENSUS 21C ET	
AR PYWT'S WARWAGON D502	DJS 228W	
DJS 908G	BASIN PAYWEIGHT 1682	
	WAR PRODUCT B501 Z536	
	DVE DAVIDSON JACKPOT 74Z	
	CTR 198L	
CTR CTR ALEXIS 503C ET		

CED	BW	WW	YW	MK	TM	HP	STAY	YG	CW	REA	MB	\$COW	FPI
10	-1.1	61	97	23	53	5.83	16.3	-0.08	23	0.46	0.3		73.66
85%	35%	90%	80%	25%	70%	40%	30%	45%	90%	60%	65%	%	90%
<b>BW</b>											<b>adj. WW</b>		
83											628 (98)		

Another Solid Rip Son, Dam is an up and coming young Female.



DJS 149K Sells as Lot 26.

**27 DJS 103K** XGGP

<b>48% GV Balancer Bull</b> 1/22/2022	<b>Homozygous Black</b> DJS 103K	<b>Homozygous Polled</b> 1555045
DLW COPPERHEAD 4109E	SEPT COPPERFIELD ET	
DJS DJS RIP 172G	DLW MS INDUSTRY	
DJS 784E	TAU MR CONSENSUS 21C ET	
DJS DERRINGER 96X	DJS 228W	
DJS 333A	TAU GUNSLINGER 19U	
	MISS 004-76T	
	DLW GOOD BOY 201U	
	DJS 92N	
DJS 163YET		

CED	BW	WW	YW	MK	TM	HP	STAY	YG	CW	REA	MB	\$COW	FPI
10	-0.6	58	86	22	51	2.77	14.9	-0.15	21	0.49	0.05		64.99
85%	50%	95%	95%	35%	80%	75%	40%	15%	95%	50%	>95%	%	>95%
<b>BW</b>											<b>adj. WW</b>		
87											594 (93)		

He is out of one of my Favorite Cows, Moderate, Deep Sound, and a Great Mother.

**28 DJS 169K ET** XGGP

<b>54% GV Balancer Bull</b> 2/24/2022	<b>Homozygous Black</b> DJS 169K	<b>Homozygous Polled</b> 1555075
DLW COPPERHEAD 4109E	SEPT COPPERFIELD ET	
DJS DJS RIP 172G	DLW MS INDUSTRY	
DJS 784E	TAU MR CONSENSUS 21C ET	
CIRS 12LW ET	DJS 228W	
AHL LEE ANN	EGL FOSTERS LO17 ET	
	JBOB 1222G ET	
	CONNEALY STIMULUS 8419	
	VER LEE ANN 121X	
VER LEE ANN 346Z		

CED	BW	WW	YW	MK	TM	HP	STAY	YG	CW	REA	MB	\$COW	FPI
11.7	-1.9	58	85	22	51	2.67	15.9	-0.06	24	0.4	0.37		74.53
60%	25%	95%	95%	35%	80%	75%	30%	50%	90%	70%	50%	%	85%
<b>BW</b>											<b>adj. WW</b>		
89											613 ( )		

ET Calf RIP and 489B.

**29 DJS 171K ET** XGGP

<b>54% GV Balancer Bull</b> 3/3/2022	<b>Homozygous Black</b> DJS 171K	<b>Homozygous Polled</b> 1555077
DLW COPPERHEAD 4109E	SEPT COPPERFIELD ET	
DJS DJS RIP 172G	DLW MS INDUSTRY	
DJS 784E	TAU MR CONSENSUS 21C ET	
CIRS 12LW ET	DJS 228W	
AHL LEE ANN	EGL FOSTERS LO17 ET	
	JBOB 1222G ET	
	CONNEALY STIMULUS 8419	
	VER LEE ANN 121X	
VER LEE ANN 346Z		

CED	BW	WW	YW	MK	TM	HP	STAY	YG	CW	REA	MB	\$COW	FPI
12.2	-0.7	74	110	22	59	2.67	19.8	-0.17	23	0.44	0.48		86.26
60%	45%	35%	50%	35%	30%	75%	2%	10%	90%	60%	25%	%	25%
<b>BW</b>											<b>adj. WW</b>		
83											593 ( )		

ET Calf RIP and 489B.

**30 DJS 172K ET** XGGP

<b>54% GV Balancer Bull</b> 2/25/2022	<b>Homozygous Black</b> DJS 172K	<b>Homozygous Polled</b> 1555078
DLW COPPERHEAD 4109E	SEPT COPPERFIELD ET	
DJS DJS RIP 172G	DLW MS INDUSTRY	
DJS 784E	TAU MR CONSENSUS 21C ET	
CIRS 12LW ET	DJS 228W	
AHL LEE ANN	EGL FOSTERS LO17 ET	
	JBOB 1222G ET	
	CONNEALY STIMULUS 8419	
	VER LEE ANN 121X	
VER LEE ANN 346Z		

CED	BW	WW	YW	MK	TM	HP	STAY	YG	CW	REA	MB	\$COW	FPI
7.6	0.7	74	106	22	58	2.67	17.4	-0.18	32	0.68	0.46		82.06
>95%	80%	35%	60%	35%	35%	75%	15%	10%	60%	15%	25%	%	45%
<b>BW</b>											<b>adj. WW</b>		
84											652 ( )		

Another ET Great Cross Rip and 489B.

**31 DJS 130K** XGGP

<b>45% GV Balancer Bull</b> 1/10/2022	<b>Homozygous Black</b> DJS 130K	<b>Homozygous Polled</b> 1555048
DLW COPPERHEAD 4109E	SEPT COPPERFIELD ET	
DJS DJS RIP 172G	DLW MS INDUSTRY	
DJS 784E	TAU MR CONSENSUS 21C ET	
DJS DERRINGER 96X	DJS 228W	
DJS 240Z	TAU GUNSLINGER 19U	
	MISS 004-76T	
	XXB LUDACRIS 039S ET	
	DJS 320S	
DJS 24W		

CED	BW	WW	YW	MK	TM	HP	STAY	YG	CW	REA	MB	\$COW	FPI
6.1	2.1	64	98	20	52	1.51	11.7	-0.18	35	0.62	0.32		70.92
>95%	95%	80%	75%	55%	75%	85%	85%	10%	50%	25%	60%	%	95%
<b>BW</b>											<b>adj. WW</b>		
92											594 (93)		

Nice WW EPD and REA EPD







DJS 125K Sells as Lot 32.

<b>32</b>	<b>DJS 125K</b>		<b>ØGGP</b>										
	46% GV Balancer Bull 1/13/2022	Heterozygous Black DJS 125K			Homozygous Polled 1551178								
TAU TAU MR IN FOCUS 22Z													
<b>DJS VEGAS 81B</b>													
DJS 217X DVE DVE WOODROW 121D													
<b>DJS 956G</b>													
MS SCC WAYLON 307B													
<b>CE</b>	<b>BW</b>	<b>WW</b>	<b>YW</b>	<b>MK</b>	<b>TM</b>	<b>HP</b>	<b>STAY</b>	<b>YG</b>	<b>CW</b>	<b>REA</b>	<b>MB</b>	<b>\$COW</b>	<b>FPI</b>
19.9	-4.9	60	91	21	51	5.2	15.8	0.11	14	-0.01	0.75		90.43
1%	2%	90%	90%	40%	80%	50%	30%	>95%	>95%	>95%	2%	%	10%
<b>BW</b>											<b>adj. WW</b>		
71											660 (103)		

Vegas sired Heifer Bull, Top 1% CED & CEM, Top 2% BW & Marbling.

<b>33</b>	<b>DJS 199K</b>		<b>ØGGP</b>										
	43% GV Balancer Bull 1/21/2022	Homozygous Black DJS 199K			Homozygous Polled 1558991								
TAU TAU MR IN FOCUS 22Z													
<b>DJS VEGAS 81B</b>													
DJS 217X GRU EARLY ENCOUNTER 536E													
<b>DJS 060H</b>													
DJS 728E													
<b>CE</b>	<b>BW</b>	<b>WW</b>	<b>YW</b>	<b>MK</b>	<b>TM</b>	<b>HP</b>	<b>STAY</b>	<b>YG</b>	<b>CW</b>	<b>REA</b>	<b>MB</b>	<b>\$COW</b>	<b>FPI</b>
19.9	-4.6	64	97	25	57	6.43	18.4	0.08	16	0	0.65		90.21
1%	3%	80%	80%	10%	45%	40%	10%	95%	>95%	>95%	5%	%	10%
<b>BW</b>											<b>adj. WW</b>		
69											737 (115)		

Heifer Bull, Top 1% CED, Top 2% BW & CEM, Top 5% Marbling.

<b>34</b>	<b>DJS 126K</b>		<b>ØGGP</b>										
	47% GV Balancer Bull 1/18/2022	Homozygous Black DJS 126K			Polled 1551179								
TAU TAU MR IN FOCUS 22Z													
<b>DJS VEGAS 81B</b>													
DJS 217X SLC SLC VIPER 7E													
<b>DJS 975G</b>													
DJS 307A													
<b>CE</b>	<b>BW</b>	<b>WW</b>	<b>YW</b>	<b>MK</b>	<b>TM</b>	<b>HP</b>	<b>STAY</b>	<b>YG</b>	<b>CW</b>	<b>REA</b>	<b>MB</b>	<b>\$COW</b>	<b>FPI</b>
17.2	-3.7	59	96	21	51	1.86	17.1	0.09	13	0.1	0.47		81.04
10%	5%	95%	80%	40%	80%	85%	15%	95%	>95%	>95%	25%	%	50%
<b>BW</b>											<b>adj. WW</b>		
81											605 (94)		

Heifer Bull, Top 10% CE & BW, Top 25% Marbling & Stayability.

*Reference*

<b>DJS VEGAS 81B</b>	42% GV Balancer Bull 1/14/2014		Homozygous Black DJS 81B		Homozygous Polled 1294027								
	MYTTY IN FOCUS					SAF FOCUS OF ER MYTTY COUNTESS 906							
<b>TAU TAU MR IN FOCUS 22Z</b>													
TAU MS GUNNISON 028X XXB LUDACRIS 039S ET													
<b>DJS 217X</b>													
DJS 122U													
<b>CE</b>	<b>BW</b>	<b>WW</b>	<b>YW</b>	<b>MK</b>	<b>TM</b>	<b>HP</b>	<b>STAY</b>	<b>YG</b>	<b>CW</b>	<b>REA</b>	<b>MB</b>	<b>\$COW</b>	<b>FPI</b>
21.8	-7.4	46	63	22	45	4.23	19.7	0.2	-5	-0.49	0.87		87.56
1%	1%	>95%	>95%	35%	95%	60%	5%	>95%	>95%	>95%	1%	%	25%

Sire of Lots 32-37. Slam Dunk Heifer Bull. Sires excellent females. Top 1% for calving ease direct, top 1% for birthweight, top 1% for calving ease maternal, and top 1% for marbling. These cattle move around like cats. Breed the heifers and feed the rest.



# Swanson Cattle Co. *Balancer Bulls*

## 35 DJS 128K XGGP

44% GV Balancer Bull 1/16/2022													Homozygous Black DJS 128K			Homozygous Polled 1551180		
TAU TAU MR IN FOCUS 22Z													MYTTY IN FOCUS					
DJS VEGAS 81B													TAU MS GUNNISON 028X					
DJS 217X													XXB LUDACRIS 039S ET					
TAU TAU LIGHTYEAR 111F													DJS 122U					
DJS 057H													TAU INFINITY 47C					
DJS 689D													TAU MS GUNNISON 3088A					
													COLE CREEK CEDAR RIDGE 1V					
													444					
CED	BW	WW	YW	MK	TM	HP	STAY	YG	CW	REA	MB	\$COW	FPI					
15.6	-3.1	65	100	24	56	4.63	12.6	0.13	24	0.02	0.62		86.97					
15%	10%	75%	75%	15%	50%	50%	70%	>95%	90%	>95%	10%	%	20%					
BW											adj. WW							
77											675 (105)							

Heifer Bull, Top 10% BW & CEM, Top 15% CED, Top 5% Marbling.

## 36 DJS 142K XGGP

44% GV Balancer Bull 3/16/2022													Homozygous Black DJS 142K			Homozygous Polled 1551181		
TAU TAU MR IN FOCUS 22Z													MYTTY IN FOCUS					
DJS VEGAS 81B													TAU MS GUNNISON 028X					
DJS 217X													XXB LUDACRIS 039S ET					
EGL EGL LIFELINE B101													DJS 122U					
DJS 728E													S A V FINAL ANSWER 0035					
DJS 216X													EGL ESTELLE X014					
													XXB LUDACRIS 039S ET					
													DJS 150U					
CED	BW	WW	YW	MK	TM	HP	STAY	YG	CW	REA	MB	\$COW	FPI					
20.8	-5.2	56	82	19	47	3.06	12.2	0.16	26	-0.02	0.74		87.57					
1%	2%	95%	>95%	65%	95%	75%	85%	>95%	85%	>95%	2%	%	20%					
BW											adj. WW							
71											647 (101)							

Heifer Bull, Top 1% CED, Top 2% BW, CEM, and Marbling.

## 37 DJS 100K XGGP

44% GV Balancer Bull 1/20/2022													Homozygous Black DJS 100K			Homozygous Polled 1551177		
TAU TAU MR IN FOCUS 22Z													MYTTY IN FOCUS					
DJS VEGAS 81B													TAU MS GUNNISON 028X					
DJS 217X													XXB LUDACRIS 039S ET					
TAU TAU LIGHTYEAR 111F													DJS 122U					
DJS 027H													TAU INFINITY 47C					
DJS 717E													TAU MS GUNNISON 3088A					
													BALDRIDGE WAYLON W34					
													DLW MS GOOD NIGHT 0114X					
CED	BW	WW	YW	MK	TM	HP	STAY	YG	CW	REA	MB	\$COW	FPI					
19.3	-3.8	58	88	22	51	6.76	17.5	0	21	0.17	0.56		83.54					
2%	5%	95%	95%	35%	80%	30%	10%	75%	95%	>95%	10%	%	35%					
BW											adj. WW							
71											635 (99)							

Heifer Bull, Top 2% CED, Top 5% BW, Top 1% CEM, Top 15% Marbling.





# Swanson Cattle Co. *Balancer Bulls*



DJS 161K Sells as Lot 38.

## 38 DJS 161K XGGP

32% GV Balancer Bull 2/5/2022													Homozygous Black DJS 161K				Homozygous Polled 1551189										
TAU INFINITY 47C													TAU TAU MR IN FOCUS 22Z				TAU TAU MIA 363A										
TAU TAU LIGHTYEAR 111F													GMCC RUPPLE GUNNISON N31				TAU MS PRINCES GIRL 1159Y										
TAU MS GUNNISON 3088A													O C C PAXTON 730P				BOHI ABIGALE 6014										
COLEMAN CHARLO 0256													SITZ ALLIANCE 6595				BAR S BLUEBIRD 2443										
BAR S BLUEBIRD 5205													BAR S BLUEBIRD 9493														
CED	BW	WW	YW	MK	TM	HP	STAY	YG	CW	REA	MB	\$COW	FPI	CED	BW	WW	YW	MK	TM	HP	STAY	YG	CW	REA	MB	\$COW	FPI
13	-1.6	72	117	24	60	7.1	16.8	-0.07	35	0.72	0.51	87.56	11.6	-0.4	71	108	23	59	6.54	17.9	-0.01	25	0.42	0.23	77.15		
45%	30%	45%	30%	15%	25%	30%	15%	45%	50%	10%	20%	%	20%	60%	55%	50%	55%	25%	30%	30%	10%	70%	85%	65%	85%	%	75%
BW													adj. WW														
81													601 (94)														

A Real STUD, long deep sound with Excellent Carcass EPD's.

## 39 DJS 110K XGGP

54% GV Balancer Bull 2/14/2022													Homozygous Black DJS 110K				Homozygous Polled 1551187										
TAU INFINITY 47C													TAU TAU MR IN FOCUS 22Z				TAU TAU MIA 363A										
TAU TAU LIGHTYEAR 111F													GMCC RUPPLE GUNNISON N31				TAU MS PRINCES GIRL 1159Y										
TAU MS GUNNISON 3088A													MYTTY IN FOCUS				TAU MS GUNNISON 028X										
TAU TAU MR IN FOCUS 22Z													DJS DERRINGER 96X				DJS 92N										
DJS 594C													DJS 153ZET														
CED	BW	WW	YW	MK	TM	HP	STAY	YG	CW	REA	MB	\$COW	FPI	CED	BW	WW	YW	MK	TM	HP	STAY	YG	CW	REA	MB	\$COW	FPI
11.6	-0.4	71	108	23	59	6.54	17.9	-0.01	25	0.42	0.23	77.15	11.6	-0.4	71	108	23	59	6.54	17.9	-0.01	25	0.42	0.23	77.15		
60%	55%	50%	55%	25%	30%	30%	10%	70%	85%	65%	85%	%	75%	60%	55%	50%	55%	25%	30%	30%	10%	70%	85%	65%	85%	%	75%
BW													adj. WW														
88													676 (105)														

Soggy made, Moves like a Cat.

## 40 DJS 133K XGGP

43% GV Balancer Bull 3/3/2022													Homozygous Black DJS 133K				Homozygous Polled 1551186										
TAU INFINITY 47C													TAU TAU MR IN FOCUS 22Z				TAU TAU MIA 363A										
TAU TAU LIGHTYEAR 111F													GMCC RUPPLE GUNNISON N31				TAU MS PRINCES GIRL 1159Y										
TAU MS GUNNISON 3088A													G A R INTEGRITY				EGL G565										
XXB LUDACRIS 0395 ET													BOYD NEW DAY 8005				SMITH EMPRESS 6080										
DJS 315B													MS SCC BOYD NEW DAY-201X														
CED	BW	WW	YW	MK	TM	HP	STAY	YG	CW	REA	MB	\$COW	FPI	CED	BW	WW	YW	MK	TM	HP	STAY	YG	CW	REA	MB	\$COW	FPI
12.7	-0.7	61	98	20	51	4.15	19.8	-0.06	12	0.28	0.47	77.92	13.5	-1	71	107	25	61	9.25	24.7	-0.18	20	0.85	0.46	85.09		
45%	45%	90%	75%	55%	80%	65%	2%	50%	>95%	90%	25%	%	70%	35%	40%	50%	60%	15%	25%	15%	1%	15%	90%	5%	30%	%	30%
BW													adj. WW														
83													614 (96)														

Top 4% Stayability, Top 25% Marbling.

## Reference

### TAU TAU LIGHTYEAR 111F "BUZZ"

65% GV Balancer Bull 1/30/2018													Homozygous Black TAU 111F				Homozygous Polled 1421204										
TAU TAU MR IN FOCUS 22Z													MYTTY IN FOCUS				TAU MS GUNNISON 028X										
TAU INFINITY 47C													TAU GUNNISON 106R				TAU MS KRUGGRAND 130P 0122X										
TAU TAU MIA 363A													VRT RUP LAZY TV HOTFUDGEJ357				RUP RUPPLE 919L										
GMCC RUPPLE GUNNISON N31													TAU MR GRID TOPPER 43T				TAU MS TRAVELER 2T22 804U										
TAU MS GUNNISON 3088A													TAU MS PRINCES GIRL 1159Y														
CED	BW	WW	YW	MK	TM	HP	STAY	YG	CW	REA	MB	\$COW	FPI	CED	BW	WW	YW	MK	TM	HP	STAY	YG	CW	REA	MB	\$COW	FPI
13.5	-1	71	107	25	61	9.25	24.7	-0.18	20	0.85	0.46	85.09	13.5	-1	71	107	25	61	9.25	24.7	-0.18	20	0.85	0.46	85.09		
35%	40%	50%	60%	15%	25%	15%	1%	15%	90%	5%	30%	%	30%	35%	40%	50%	60%	15%	25%	15%	1%	15%	90%	5%	30%	%	30%

Sire of Lots 38-45. Buzz sires big ribbed, moderate framed, and sound structured easy fleshing cattle.

Top 1% stay ability, Top 10% docility, Top 5% REA



## 41 DJS 165K ⚡GGP

<b>32% GV Balancer Bull</b> 2/28/2022													<b>Homozygous Black</b> DJS 165K			<b>Homozygous Polled</b> 1551190		
TAU INFINITY 47C						TAU TAU MR IN FOCUS 22Z												
TAU TAU LIGHTYEAR 111F						TAU TAU MIA 363A												
TAU MS GUNNISON 3088A						GMCC RUPPLE GUNNISON N31												
MR SCC WAYLON'S AMBUSH 103B						TAU MS PRINCES GIRL 1159Y												
MS SCC WAYLONS AMBUSH 601						BALDRIDGE WAYLON W34												
SANDPOINT ERICA DIANNA 9717						BAR S PRINCESS 9165												
						G A R ULTIMATE												
						WULFFS ERICA DIANNA 6404												
<b>CED</b>	<b>BW</b>	<b>WW</b>	<b>YW</b>	<b>MK</b>	<b>TM</b>	<b>HP</b>	<b>STAY</b>	<b>YG</b>	<b>CW</b>	<b>REA</b>	<b>MB</b>	<b>\$COW</b>	<b>FPI</b>					
12.3	0.3	69	112	19	54	6.58	11.5	-0.06	31	0.53	0.6		84.61					
60%	70%	60%	45%	65%	60%	30%	85%	50%	65%	40%	10%	%	30%					
<b>BW</b>						<b>adj. WW</b>												
83						588 (92)												

Good Performance Numbers, Top 10% Marbling.

## 42 DJS 167K ⚡GGP

<b>32% GV Balancer Bull</b> 3/9/2022													<b>Homozygous Black</b> DJS 167K			<b>Homozygous Polled</b> 1551191		
TAU INFINITY 47C						TAU TAU MR IN FOCUS 22Z												
TAU TAU LIGHTYEAR 111F						TAU TAU MIA 363A												
TAU MS GUNNISON 3088A						GMCC RUPPLE GUNNISON N31												
MUSGRAVE AVIATOR						TAU MS PRINCES GIRL 1159Y												
MS SCC AVIATOR 857						KROUPALS B&B IDENTITY												
RR ESTONIA 5033						MCATL FOREVER LADY 1429-138												
						TC FREEDOM 104												
						HA ESTONIA 2532												
<b>CED</b>	<b>BW</b>	<b>WW</b>	<b>YW</b>	<b>MK</b>	<b>TM</b>	<b>HP</b>	<b>STAY</b>	<b>YG</b>	<b>CW</b>	<b>REA</b>	<b>MB</b>	<b>\$COW</b>	<b>FPI</b>					
14.5	-2.5	64	97	23	54	6.49	17.3	-0.04	17	0.41	0.51		82.92					
35%	15%	80%	80%	25%	60%	40%	15%	60%	>95%	70%	20%	%	40%					
<b>BW</b>						<b>adj. WW</b>												
83						642 (100)												

Big Spread Bull, Top 15% Marbling.

## 43 DJS 305J ⚡GGP

<b>32% GV Balancer Bull</b> 9/30/2021													<b>Homozygous Black</b> DJS 305J			<b>Homozygous Polled</b> 1551211		
TAU INFINITY 47C						TAU TAU MR IN FOCUS 22Z												
TAU TAU LIGHTYEAR 111F						TAU TAU MIA 363A												
TAU MS GUNNISON 3088A						GMCC RUPPLE GUNNISON N31												
S A V FINAL ANSWER 0035						TAU MS PRINCES GIRL 1159Y												
BAR S PRIDE 5929						SITZ TRAVELER 8180												
BAR S PRIDE 3279						S A V EMULOUS 8145												
						BAR S RANGE BOSS 1118												
						BAR S PRIDE 2401												
<b>CED</b>	<b>BW</b>	<b>WW</b>	<b>YW</b>	<b>MK</b>	<b>TM</b>	<b>HP</b>	<b>STAY</b>	<b>YG</b>	<b>CW</b>	<b>REA</b>	<b>MB</b>	<b>\$COW</b>	<b>FPI</b>					
14.2	-2.1	76	115	22	60	5.71	14.1	0.01	25	0.51	0.48		88.95					
35%	20%	30%	35%	35%	25%	40%	55%	80%	85%	45%	25%	%	15%					
<b>BW</b>						<b>adj. WW</b>												
87						603 (93)												

Herdshire, this Bull is Very Sound, Stout made with Calving Ease and Marbling.

## 44 DJS 307J ⚡GGP

<b>54% GV Balancer Bull</b> 8/23/2021													<b>Homozygous Black</b> DJS 307J			<b>Homozygous Polled</b> 1551213		
TAU INFINITY 47C						TAU TAU MR IN FOCUS 22Z												
TAU TAU LIGHTYEAR 111F						TAU TAU MIA 363A												
TAU MS GUNNISON 3088A						GMCC RUPPLE GUNNISON N31												
DJS DERRINGER 96X						TAU MS PRINCES GIRL 1159Y												
DJS 734E						TAU GUNSLINGER 19U												
DJS 591C						MISS 004-76T												
						TAU TAU MR IN FOCUS 22Z												
						DJS 150U												
<b>CED</b>	<b>BW</b>	<b>WW</b>	<b>YW</b>	<b>MK</b>	<b>TM</b>	<b>HP</b>	<b>STAY</b>	<b>YG</b>	<b>CW</b>	<b>REA</b>	<b>MB</b>	<b>\$COW</b>	<b>FPI</b>					
17.3	-2.5	63	89	24	56	4.45	19.5	-0.13	27	0.74	0.39		80.41					
10%	15%	85%	95%	15%	50%	65%	2%	25%	80%	10%	45%	%	55%					
<b>BW</b>						<b>adj. WW</b>												
71						635 (98)												

Deep Sided, Soggy Middled, Easy Mover, Negative for BW, Top 4% Stayability and CED, Top 10% REA.

## 45 DJS 306J ⚡GGP

<b>32% GV Balancer Bull</b> 9/13/2021													<b>Homozygous Black</b> DJS 306J			<b>Homozygous Polled</b> 1551212		
TAU INFINITY 47C						TAU TAU MR IN FOCUS 22Z												
TAU TAU LIGHTYEAR 111F						TAU TAU MIA 363A												
TAU MS GUNNISON 3088A						GMCC RUPPLE GUNNISON N31												
S A V FINAL ANSWER 0035						TAU MS PRINCES GIRL 1159Y												
BAR S BEELINE 1182						SITZ TRAVELER 8180												
BAR S BEELINE 4293						S A V EMULOUS 8145												
						BON VIEW NEW DESIGN 878												
						BAR S BEELINE 2131												
<b>CED</b>	<b>BW</b>	<b>WW</b>	<b>YW</b>	<b>MK</b>	<b>TM</b>	<b>HP</b>	<b>STAY</b>	<b>YG</b>	<b>CW</b>	<b>REA</b>	<b>MB</b>	<b>\$COW</b>	<b>FPI</b>					
14.9	-1.8	64	104	23	55	6.19	15.5	0	17	0.37	0.54		83.42					
25%	25%	80%	65%	25%	55%	40%	30%	75%	>95%	75%	15%	%	35%					
<b>BW</b>						<b>adj. WW</b>												
87						648 (100)												

Attractive Phenotype. Top 25% CED & BW. Top 15% CEM & Marbling.







DJS 127K Sells as Lot 46.



**46 DJS 127K**

♂GGP

<b>30% GV Percentage Bull</b>		<b>Homozygous Black</b>	<b>Polled</b>										
1/19/2022		DJS 127K	1551184										
TMMW BISMARCKS MR GOVENOR 2A		HPR ROYAL BISMARCK 0504											
<b>BTBR DURANT 6296D</b>		TMMW GOVENORS MISS TRISTA 13Y											
BTBR BTBR MS BLACK CROSS 2023		VRT LAZY TV WATCHMAN W021											
GRU EARLY ENCOUNTER 536E		BTBR MS BLACK CROSS 7103											
<b>DJS 047H</b>		BASIN PAYWEIGHT 1682											
538C		GRU MS SAM 536C											
<b>CED</b>	<b>BW</b>	<b>WW</b>	<b>YW</b>	<b>MK</b>	<b>TM</b>	<b>HP</b>	<b>STAY</b>	<b>YG</b>	<b>CW</b>	<b>REA</b>	<b>MB</b>	<b>\$COW</b>	<b>FPI</b>
15	-1.5	83	126	19	61	4.93	10.6	0.04	34	0.28	0.57		94.54
20%	25%	10%	10%	65%	20%	55%	90%	90%	45%	95%	10%	%	3%
<b>BW</b>											<b>adj. WW</b>		
86											680 (106)		

Easy Calver with lots of Power. Top shelf EPDs for CED, BW, WW, YW, CED, DOC, and Marbling.





## Reference

### BTBR DURANT 6296D

38% GV Balancer Bull Heterozygous Black Homozygous Polled  
3/25/2016 BTBR 6296D 1352159

HPR ROYAL BISMARCK 0504

S A V BISMARCK 5682

### TMMW BISMARCKS MR GOVENOR 2A

TMMW GOVENORS MISS TRISTA 13Y  
VRT LAZY TV WATCHMAN W021

HPR CADE'S MIDLAND ET 7611  
OZZ EXT GOVENOR 3N  
RCC TRISTA BLACKCAP N D 6923  
DVA SCOUT 553

### BTBR BTBR MS BLACK CROSS 2023

BTBR MS BLACK CROSS 7103

VRT LAZY TV MS PETERBLT T309  
BTBR MR BLACK CROSS 3002N ET  
BTBR MS DAWN 2069M

CED	BW	WW	YW	MK	TM	HP	STAY	YG	CW	REA	MB	\$COW	FPI
18.8	-4.5	78	109	16	55	2.94	14.1	0.04	41	0.32	0.69	104.73	97.82
5%	3%	25%	55%	80%	55%	70%	55%	80%	35%	80%	5%	40%	3%

Heifer Bull with performance, functional, and sound

Top 5% CED Top 3% BW Top 3% CEM

Top 1% PG 30 Top 10% MB Top 2% RFI.



BTBR DURANT 6296D Sire of Lots 46-48.

### 47 DJS 101K

41% GV Balancer Bull  
1/17/2022

Homozygous Black  
DJS 101K Polled  
1551200



TMMW BISMARCKS MR GOVENOR 2A

HPR ROYAL BISMARCK 0504  
TMMW GOVENORS MISS TRISTA 13Y  
VRT LAZY TV WATCHMAN W021

### BTBR DURANT 6296D

BTBR BTBR MS BLACK CROSS 2023  
DJS VEGAS 81B

BTBR MS BLACK CROSS 7103  
TAU TAU MR IN FOCUS 22Z

### DJS 035H

DJS 808F

DJS 217X  
EGL EGL LIFELINE B101  
DJS 402B

CED	BW	WW	YW	MK	TM	HP	STAY	YG	CW	REA	MB	\$COW	FPI
14.4	-3.2	76	107	18	56	3.89	12.1	-0.03	39	0.42	0.61		92.59
35%	10%	30%	55%	70%	50%	65%	85%	65%	35%		10%	%	10%
											adj. WW		
BW											80		699 (109)

Big WW. Top 10% BW & Marbling.



DJS 101K Sells as Lot 47.

### 48 DJS 176K

43% GV Balancer Bull  
1/15/2022

Red Homozygous Polled  
DJS 176K 1551219



TMMW BISMARCKS MR GOVENOR 2A

HPR ROYAL BISMARCK 0504  
TMMW GOVENORS MISS TRISTA 13Y  
VRT LAZY TV WATCHMAN W021

### BTBR DURANT 6296D

BTBR BTBR MS BLACK CROSS 2023  
DJS VEGAS 81B

BTBR MS BLACK CROSS 7103  
TAU TAU MR IN FOCUS 22Z

### DJS 032H

DJS 801F

DJS 217X  
BGR BGR COHESION 5153C  
DJS 112U ET

CED	BW	WW	YW	MK	TM	HP	STAY	YG	CW	REA	MB	\$COW	FPI
16.5	-4	62	87	18	49	2.81	15.4	0.04	12	0.05	0.76		89.28
15%	4%	85%	95%	70%	85%	75%	40%	85%	>95%	2%		%	15%
											adj. WW		
BW											75		672 (105)

Heifer Bull. Top 4% BW, Top 2% Marbling.





# Swanson Cattle Co. *Balancer Bulls*

## 49 DJS 116K XGGP

23% GV Percentage Bull 2/24/2022											Homozygous Black DJS 116K			Homozygous Polled 1551193		
BASIN PAYWEIGHT 1682											BASIN PAYWEIGHT 006S 21AR O LASS 7017 CONNEALY FINAL PRODUCT WAR ROCKY Z536 U486 TAU GUNSLINGER 19U MISS 004-76T TAU TAU MR IN FOCUS 22Z DJS 79S					
AR PYWT'S WARWAGON D502																
WAR PRODUCT B501 Z536 DJS DERRINGER 96X																
DJS 770E																
DJS 521C																
CE	BW	WW	YW	MK	TM	HP	STAY	YG	CW	REA	MB	\$COW	FPI			
14.2	0.6	81	132	22	63	5.62	11.4	0.34	59	0.05	0.48		87.55			
30%	70%	10%	10%	35%	15%	40%	90%	>95%	2%	>95%	15%	%	15%			
BW											adj. WW					
89											599 (93)					

Mix Calving Ease and Growth.

## 50 DJS 146K XGGP

22% GV Percentage Bull 3/1/2022											Black DJS 146K			Homozygous Polled 1551194		
BASIN PAYWEIGHT 1682											BASIN PAYWEIGHT 006S 21AR O LASS 7017 CONNEALY FINAL PRODUCT WAR ROCKY Z536 U486 S A V FINAL ANSWER 0035 EGL ESTELLE X014 TAU TAU MR IN FOCUS 22Z DJS 150U					
AR PYWT'S WARWAGON D502																
WAR PRODUCT B501 Z536 EGL EGL LIFELINE B101																
DJS 836F																
DJS 591C																
CE	BW	WW	YW	MK	TM	HP	STAY	YG	CW	REA	MB	\$COW	FPI			
18.6	-2.6	71	115	22	58	6.37	12.3	0.12	42	0.24	0.28		82.46			
2%	10%	45%	30%	35%	35%	40%	85%	>95%	20%	95%	55%	%	30%			
BW											adj. WW					
71											638 (100)					

Top 2% CED, 10% BW, 20% CW.

## 51 DJS 150K

27% GV Balancer Bull 2/24/2022											Black DJS 150K			Homozygous Polled 1551202		
BASIN PAYWEIGHT 1682											BASIN PAYWEIGHT 006S 21AR O LASS 7017 CONNEALY FINAL PRODUCT WAR ROCKY Z536 U486 BASIN PAYWEIGHT 1682 GRU MS SAM 536C DJS 16Z DJS 204N					
AR PYWT'S WARWAGON D502																
WAR PRODUCT B501 Z536 GRU EARLY ENCOUNTER 536E																
DJS 943G																
DJS 478B																
CE	BW	WW	YW	MK	TM	HP	STAY	YG	CW	REA	MB	\$COW	FPI			
16.5	-1.9	67	114	26	59	5.39	18	0.15	34	0.1	0.54		85.67			
15%	25%	70%	40%	10%	30%	50%	10%	>95%	55%	>95%	15%	%	25%			
BW											adj. WW					
73											605 (94)					

Top 15% CED, Top 10% Stayability, Top 15% Marbling.



WAR PYWT'S WARWAGON D502 Sire of Lots 49-51.

### Reference

#### WAR Pywt's Warwagon D502

PB Angus Bull 07-25-2016											Homozygous Black D502			Homozygous Polled *18771144		
#+*BASIN PAYWEIGHT 1682											#+*BASIN PAYWEIGHT 006S 21AR O LASS 7017 #*CONNEALY FINAL PRODUCT					
WAR PRODUCT B501 Z536											WAR ROCKY Z536 U486 #VERMILION PAYWEIGHT J847 +BASIN LUCY 3829 #HARB PENDLETON 765 J H 21AR O LASS F24A *CONNEALY PRODUCT 568 #EBONISTA OF CONANGA 471 #*VAR ROCKY 80029 WAR MAINLINE U486 2309					

CE	BW	WW	YW	HP	MILK	\$EN	CW	MARB	RE	\$M	\$W	\$B	\$C
+13	-.6	+63	+113	+6.9	+38	-15	+49	+52	+33	+67	+75	+128	+233
10%	15%	45%	45%	95%	3%	45%	40%	50%	85%	30%	10%	60%	55%

Warwagon sires calving ease, phenotype, and daughters that are sound, broody, with great udders. His sons catch your eye. His progeny have topped the Wagon hammer sale.







DJS 309J Sells as Lot 52.



DJS 390J Sells as Lot 53.

**52 DJS 309J**

♂GGP

43% GV Balancer Bull													
8/26/2021													
S A V RESOURCE 1441							RITO 707 OF IDEAL 3407 7075						
TAU MR RESOURCE 102E							S A V BLACKCAP MAY 4136						
TAU MS. GUNNISON 106R 3147A							TAU GUNNISON 106R						
TAU HONUS 40A							TAU MS SOLUTION 9140W						
DJS 626D							TAU MR GRID TOPPER 43T						
DJS 481B							TAU MS KRUGERRAND 0142X						
							SVF BRILLAINCE Z35						
							DJS 256X						
CE	BW	WW	YW	MK	TM	HP	STAY	YG	CW	REA	MB	SCOW	FPI
7.7	1.4	64	99	17	49	2.01	11.8	-0.16	30	0.66	0.14		67.27
>95%	90%	80%	75%	80%	85%	85%	85%	15%	70%	20%	95%	%	>95%
<b>BW</b>							<b>adj. WW</b>						
91							593 (92)						

STUD. Will add Pounds, Fleshing Ability & REA. Potential Herdsire.

**53 DJS 390J**

43% GV Balancer Bull													
8/21/2021													
S A V RESOURCE 1441							RITO 707 OF IDEAL 3407 7075						
TAU MR RESOURCE 102E							S A V BLACKCAP MAY 4136						
TAU MS. GUNNISON 106R 3147A							TAU GUNNISON 106R						
DJS 317A							TAU MS SOLUTION 9140W						
							CONNEALY IMPRESSION 583B						
							SVF MS PERFORMER U120						
							XXB LUDACRIS 039S ET						
							DJS 314E						
							DJS 110W ET						
CE	BW	WW	YW	MK	TM	HP	STAY	YG	CW	REA	MB	SCOW	FPI
10.2	-0.1	64	101	16	49	0.66	14.4	-0.09	32	0.51	0.43		77.13
85%	60%	80%	70%	85%	85%	95%	55%	40%	60%	45%	35%	%	75%
<b>BW</b>							<b>adj. WW</b>						
74							585 (97)						

Long age Bull. Deep and soggy will make Easy Keeping Cattle.





DJS 302J Sells as Lot 54.

**54 DJS 302J** ⚔GGP

<b>46% GV Balancer Bull</b> 10/20/2021													<b>Homozygous Black</b> DJS 302J				<b>Polled</b> 1551208					
BASIN PAYWEIGHT 1682													BASIN PAYWEIGHT 006S				21AR O LASS 7017					
<b>GRU EARLY ENCOUNTER 536E</b>													VRT LAZY TV SAM U451				GRU GRU MS IMPACT 353A					
GRU MS SAM 536C													G A R INTEGRITY				EGL G565					
XXB LUDACRIS 039S ET													DLW GOOD BOY 201U				DJS 84S					
<b>DJS 369A</b>													DJS 252X									
<b>CED</b>	<b>BW</b>	<b>WW</b>	<b>YW</b>	<b>MK</b>	<b>TM</b>	<b>HP</b>	<b>STAY</b>	<b>YG</b>	<b>CW</b>	<b>REA</b>	<b>MB</b>	<b>\$COW</b>	<b>FPI</b>									
14.7	0.1	68	117	27	60	7.28	18.4	-0.05	16	0.11	0.48		83.19									
25%	65%	65%	30%	4%	25%	30%	10%	55%	>95%	>95%	25%	%	40%									
<b>BW</b>													<b>adj. WW</b>									
79													678 (105)									

Deep Sided, Easy Calving, Easy Flething, Good Mother.

**55 DJS 301J** ⚔GGP

<b>59% GV Balancer Bull</b> 9/27/2021													<b>Homozygous Black</b> DJS 301J				<b>Polled</b> 1551207					
BASIN PAYWEIGHT 1682													BASIN PAYWEIGHT 006S				21AR O LASS 7017					
<b>GRU EARLY ENCOUNTER 536E</b>													VRT LAZY TV SAM U451				GRU GRU MS IMPACT 353A					
GRU MS SAM 536C													SGRI HONOR ROLL S232				TAU GUNNISON 5151R					
TAU GUNSLINGER 19U													HAD E2 SQUARE				R ALCORN STACKER G110					
<b>DJS 198YET</b>													DJS 92N									
<b>CED</b>	<b>BW</b>	<b>WW</b>	<b>YW</b>	<b>MK</b>	<b>TM</b>	<b>HP</b>	<b>STAY</b>	<b>YG</b>	<b>CW</b>	<b>REA</b>	<b>MB</b>	<b>\$COW</b>	<b>FPI</b>									
15	-2.3	59	94	21	50	11.1	20.7	-0.07	9	0.23	0.34		76.01									
25%	20%	95%	85%	40%	85%	4%	1%	45%	>95%	95%	55%	%	80%									
<b>BW</b>													<b>adj. WW</b>									
77													616 (103)									

Easy Calver, Long age Bull will cover lots of Cows.

**56 DJS 109K** ⚔GGP

<b>48% GV Balancer Bull</b> 2/24/2022													<b>Homozygous Black</b> DJS 109K				<b>Polled</b> 1551198					
DLW TPG E-TRADE 1032F ET													BROOKING BANK NOTE 4040				DLW MS U271 3048A ET					
<b>DLW E TRADE 692H</b>													DLW DLW EDISON 6718X				DLW MS WARDON 110Y OF 551					
DLW MS EDISON 692D OF 110													CONNEALY CONSENSUS 7229				TAU GUNNISON 5151R					
TAU OUTRIGHT 162A													CTR GOOD NIGHT 715T				TAU MS NIGHT MOVES 8166U					
<b>TAU MS. OUTRIGHT 549C</b>													TAU MS SUPER NIGHT 3014A									
<b>CED</b>	<b>BW</b>	<b>WW</b>	<b>YW</b>	<b>MK</b>	<b>TM</b>	<b>HP</b>	<b>STAY</b>	<b>YG</b>	<b>CW</b>	<b>REA</b>	<b>MB</b>	<b>\$COW</b>	<b>FPI</b>									
17.2	-1.9	65	100	16	49	5.14	14.3	0.03	45	0.56	0.31		78.07									
10%	25%	75%	100%	85%	85%	50%	55%	85%	20%	35%	65%	%	65%									
<b>BW</b>													<b>adj. WW</b>									
76													603 (94)									

Calving Ease Specialist.

*Reference*

<b>GRU EARLY ENCOUNTER 536E</b>													<b>Homozygous Polled</b> 1402047									
<b>44% GV Balancer Bull</b> 2/18/2017													<b>Homozygous Black</b> GRU 536E									
BASIN PAYWEIGHT 006S													VERMILION PAYWEIGHT J847				BASIN LUCY 3829					
<b>BASIN PAYWEIGHT 1682</b>													HARB PENDLETON 76S J H				21AR O LASS F24A					
21AR O LASS 7017													KHR SAM SPADE 02S				VRT LAZY TV MS FULLBACK L643					
VRT LAZY TV SAM U451													HYEK BLACK IMPACT 3960N				GRU MS SUGAR 041X					
<b>GRU MS SAM 536C</b>													GRU GRU MS IMPACT 353A									
<b>CED</b>	<b>BW</b>	<b>WW</b>	<b>YW</b>	<b>MK</b>	<b>TM</b>	<b>HP</b>	<b>STAY</b>	<b>YG</b>	<b>CW</b>	<b>REA</b>	<b>MB</b>	<b>\$COW</b>	<b>FPI</b>									
18.8	-1.6	71	131	31	66	15.36	21.1	-0.04	26	0.3	0.52		90.17									
5%	30%	50%	15%	1%	10%	1%	3%	55%	80%	80%	20%	%	15%									

Sire of Lots 54-62. Top 5% CED, Top 1%, HP Top 5% stay ability  
Easy flushing, big performing and small at birth.



## 57 DJS 174K ⚡GGP

24% GV Balancer Bull 3/11/2022													Homozygous Black DJS 174K			Homozygous Polled 1551217		
DLW TPG E-TRADE 1032F ET													BROOKING BANK NOTE 4040			DLW MS U271 3048A ET		
<b>DLW E TRADE 692H</b>													DLW DLW EDISON 6718X			DLW MS WARDON 110Y OF 551		
DLW MS EDISON 692D OF 110													ASR AUGUSTUS 22165			GLS SADIE W313		
PARKERS AUGUSTUS C515													BAR S COWTOWN 2903			BAR S EDELLA 2081		
<b>894F</b>													MS SCC COWTOWN 6035					
CED	BW	WW	YW	MK	TM	HP	STAY	YG	CW	REA	MB	\$COW	FPI					
15.4	-1.7	69	102	18	52	2.68	13.3	-0.18	29	0.48	0.09		74.77					
20%	25%	55%	60%	75%	70%	80%	75%	30%	65%	95%	%	%	70%					
BW													adj. WW					
77													641 (100)					

Good Cow Family, Easy Calver.

## 58 DJS 303J ⚡GGP

26% GV Balancer Bull 9/22/2021													Homozygous Black DJS 303J			Homozygous Polled 1551209		
BGGR BGGR BLK GOLD PAYLOAD 6152													CTR CTR SANDHILLS 0065X			BGR MS MARBLING 56Y		
<b>BGGR BLACK GOLD PAYLOAD 9117G</b>													VRT LAZY TV WATCHMAN W021			BGR BGGR MS MARBLING 249Z		
BGR MS WATCHMAN W021 5209B																		
<b>7044</b>																		
CED	BW	WW	YW	MK	TM	HP	STAY	YG	CW	REA	MB	\$COW	FPI					
11.3	1.3	74	124	15	21	58	-1.45	10.3	0.14	31	0.2	0.66	87.08					
70%	85%	30%	12%	45%	35%	>95%	95%	>95%	60%	>95%	3%	%	15%					
BW													adj. WW					
83													596 (92)					

Performance Bull, Top 12% YW ED, Top 4% Marbling.

## 59 DJS 304J ⚡GGP

26% GV Balancer Bull 10/24/2021													Homozygous Black 304J			Homozygous Polled 1551210		
BGGR BGGR BLK GOLD PAYLOAD 6152													CTR CTR SANDHILLS 0065X			BGR MS MARBLING 56Y		
<b>BGGR BLACK GOLD PAYLOAD 9117G</b>													VRT LAZY TV WATCHMAN W021			BGR BGGR MS MARBLING 249Z		
BGR MS WATCHMAN W021 5209B													O C C PAXTON 730P			BOHI ABIGALE 6014		
COLEMAN CHARLO 0256													G A R ULTIMATE			WULFFS ERICA DIANNA 6404		
<b>MS SCC CHARLO 7014</b>													SANDPOINT ERICA DIANNA 9717					
CED	BW	WW	YW	MK	TM	HP	STAY	YG	CW	REA	MB	\$COW	FPI					
13	0.1	72	108	20	56	0.46	14	0.19	29	0.09	0.62	92.39	85.63					
45%	65%	45%	55%	55%	50%	>95%	55%	>95%	75%	>95%	10%	80%	25%					
BW													adj. WW					
88													801 (124)					

Older Bull ready for Heavy Service Top 10% Marbling.

## 60 DJS 121K ⚡GGP

50% GV Balancer Bull 3/19/2022													Homozygous Black DJS 121K			Polled 1551160		
TAU MR RESOURCE 102E													S A V RESOURCE 1441			TAU MS. GUNNISON 106R 3147A		
<b>DJS HOWARD 101H</b>													CIRS 12LW ET			VER LEE ANN 346Z		
AHL LEE ANN													EGL ROUNDHOUSE B019			DJS 229U		
AHL AHL ROADHOUSE 6157D													TAU TAU MR IN FOCUS 22Z			TJB VELVET 912U ET		
<b>DJS 811F</b>													DJS 510C					
CED	BW	WW	YW	MK	TM	HP	STAY	YG	CW	REA	MB	\$COW	FPI					
10	0.4	71	110	20	56	1.74	19	-0.06	42	0.61	0.44		81.08					
85%	70%	50%	50%	55%	50%	85%	4%	50%	25%	25%	30%	%	50%					
BW													adj. WW					
85													711 (111)					

Good cow family, Huge WW.

## 61 DJS 178K ⚡GGP

40% GV Balancer Bull 2/26/2022													Homozygous Black DJS 178K			Polled 1551221		
GRU EARLY ENCOUNTER 536E													BASIN PAYWEIGHT 168Z			GRU MS SAM 536C		
<b>DJS DJS RANGO 166G</b>													GCC TOTAL RECALL 806T			DJS 185X		
DJS 270Z													SEPT COPPERFIELD ET			DLW MS INDUSTRY		
DLW COPPERHEAD 4109E													TAU OUTRIGHT 162A			DLW MS EMBLAZON 8023 090X		
<b>DJS 934G</b>													DJS 671D					
CED	BW	WW	YW	MK	TM	HP	STAY	YG	CW	REA	MB	\$COW	FPI					
17.7	-3.6	62	94	22	54	7.54	21.9	0.01	16	0.16	0.46		82.75					
4%	10%	85%	85%	35%	60%	20%	1%	80%	>95%	>95%	25%	%	40%					
BW													adj. WW					
66													693 (108)					

Hefier Bull Top 1% Stayability.

## 62 DJS 118K ⚡GGP

25% GV Balancer Bull 2/9/2022													Homozygous Black DJS 118K			Polled 1551199		
MUSGRAVE 316 STUNNER													LD CAPITALIST 316			MCATL BLACKBIRD 831-1378		
<b>BAR S STUNNER 0081</b>													CONNEALY CONFIDENCE 0100			BAR S PRIDE 0959		
BAR S PRIDE 4851													S A V FINAL ANSWER 0035			EGL ESTELLE X014		
EGL EGL LIFELINE B101													XXB TITUS 880K			TS BARBARA 1112		
<b>DJS 781E</b>													DJS 724T					
CED	BW	WW	YW	MK	TM	HP	STAY	YG	CW	REA	MB	\$COW	FPI					
18.4	-3.2	66	101	18	51	3.42	9.1	0.18	30	0.03	0.57		86.07					
4%	10%	70%	70%	70%	80%	75%	>95%	>95%	70%	>95%	10%	%	25%					
BW													adj. WW					
81													625 (97)					

Easy Calver, will add Marbling.





MR SCC JUSTIFIED 227 Sells as Lot 63.

**63 MR SCC Justified 227**

PB Angus Bull 1/18/2022		Homozygous Black 227		Homozygous Polled 20523100									
CONNEALY JUDGMENT				#*CONNEALY CONSENSUS 7229									
#*KG JUSTIFIED 3023				#ENTRINE OF CONANGA 9876									
KG MISS MAGIC 1443				#*SITZ WISDOM 481T									
#+*LD CAPITALIST 316				KG MISS MAGIC 3528									
MS SCC CAPITOLIST 316 9031				#*CONNEALY CAPITALIST 028									
MS SCC RESOURCE 7031				LD DIXIE ERICA 2053									
				#+*S A V RESOURCE 1441									
				MS SCC LOOKOUT 7024-250X									
CED	BW	WW	YW	HP	MILK	\$EN	CW	MARB	RE	\$M	\$W	\$B	\$C
6	1.1	63	113		25	-8				90	55		
55%	50%	45%	45%		60%	25%				2%	55%		
BW						adj. WW							
87						662 (102)							

Outstanding Phenotype, Sound Structured, Keep all the Daughters, Herdsire.

**64 MR SCC Justified 216**

PB Angus Bull 1/14/2022		Homozygous Black 216		Homozygous Polled 20563421									
CONNEALY JUDGMENT				#*CONNEALY CONSENSUS 7229									
#*KG JUSTIFIED 3023				#ENTRINE OF CONANGA 9876									
KG MISS MAGIC 1443				#*SITZ WISDOM 481T									
*WAR PYWT'S WARWAGON D502				KG MISS MAGIC 3528									
MS SCC WARWAGON 0111				#+*BASIN PAYWEIGHT 1682									
MS SCC WAYLON 542C				WAR PRODUCT B501 Z536									
				#*BALDRIDGE WAYLON W34									
				T J DELIA PRODUCT P842									
CED	BW	WW	YW	HP	MILK	\$EN	CW	MARB	RE	\$M	\$W	\$B	\$C
BW						adj. WW							
77						703 (100)							

Dam is a Outstanding young 2 year old. Dam has interim EPDs.

*Reference*

**KG Justified 3023**

PB Angus Bull 01-21-2013		Homozygous Black 3023		Homozygous Polled #*17707279									
CONNEALY JUDGMENT				#*CONNEALY CONSENSUS 7229									
#*KG JUSTIFIED 3023				BLUE LILLY OF CONANGA 16									
KG MISS MAGIC 1443				#+*RITO 6EMA OF 4L3 EMBLAZON									
#*LD CAPITALIST 316				#ENTRANCE OF CONANGA 206									
MS SCC CAPITOLIST 316 9031				#*CONNEALY ONWARD									
MS SCC RESOURCE 7031				SITZ ELLUNA ELITE 94P									
				KG TRAVELER 8180 8171									
				KG MISS MAGIC 6560									
CED	BW	WW	YW	HP	MILK	\$EN	CW	MARB	RE	\$M	\$W	\$B	\$C
+12	-2.0	+61	+108	+16.7	+29	-6	+33	+1.15	+31	+92	+79	+139	+272
15%	4%	50%	55%	4%	30%	25%	75%	10%	85%	2%	10%	45%	20%

Justified sires consistency, eye appeal and style, while backing it up with EPD'S that commercial cattlemen want. But it is the daughter's where he really shines. Phenotype, beautiful udders, disposition, and great on their feet with that broody mother cow look.



KG JUSTIFIED 3023 Sells as Lots 63-73.



## 65 MR SCC Justified 220

<b>PB Angus Bull</b> 1/17/2022		<b>Homozygous Black</b> 220		<b>Homozygous Polled</b> 20563449									
CONNEALY JUDGMENT													
**KG JUSTIFIED 3023			**CONNEALY CONSENSUS 7229										
KG MISS MAGIC 1443			#ENTRINE OF CONANGA 9876										
#+*LD CAPITALIST 316			**SITZ WISDOM 481T										
MS SCC CAP 316 0117			KG MISS MAGIC 3528										
MS SCC COWTOWN 7042			**CONNEALY CAPITALIST 028										
			LD DIXIE ERICA 2053										
			BAR S COWTOWN 2903										
			+GIBBS 8016U JAUER 7020										
<b>CED</b>	<b>BW</b>	<b>WW</b>	<b>YW</b>	<b>HP</b>	<b>MILK</b>	<b>\$EN</b>	<b>CW</b>	<b>MARB</b>	<b>RE</b>	<b>\$M</b>	<b>\$W</b>	<b>\$B</b>	<b>\$C</b>
5	1.7	64	111		27	-5				95	57		
60%	65%	45%	50%		45%	20%				1%	50%		
<b>BW</b>						<b>adj. WW</b>							
88						724 (102)							

Justified crossed with Capitolist 316, Awesome Cross and Number.s

## 66 mMR SCC JUSTIFIED 203

<b>PB Angus Bull</b> 1/19/2022		<b>Homozygous Black</b> 203		<b>Homozygous Polled</b> 20523114									
CONNEALY JUDGMENT													
**KG JUSTIFIED 3023			**CONNEALY CONSENSUS 7229										
KG MISS MAGIC 1443			#ENTRINE OF CONANGA 9876										
**SITZ UPWARD 307R			**SITZ WISDOM 481T										
MS SCC UPWARD 310B			KG MISS MAGIC 3528										
LADY HANS REFLECTIVE 0041			**CONNEALY ONWARD										
			*SITZ HENRIETTA PRIDE 81M										
			#CONNEALY REFLECTION										
			MISS HANS CHARGER 743										
<b>CED</b>	<b>BW</b>	<b>WW</b>	<b>YW</b>	<b>HP</b>	<b>MILK</b>	<b>\$EN</b>	<b>CW</b>	<b>MARB</b>	<b>RE</b>	<b>\$M</b>	<b>\$W</b>	<b>\$B</b>	<b>\$C</b>
7	0.3	53	95	I+14.6	28	-2	I+31	I+7.5	I+41	77	54	126	240
45%	30%	75%	75%	20%	35%	15%	90%	35%	80%	15%	60%	70%	55%
<b>BW</b>						<b>adj. WW</b>							
85						616 (95)							

Breed Greats in this Pedigree.

## 67 MR SCC Justified 204

<b>PB Angus Bull</b> 1/15/2022		<b>Homozygous Black</b> 204		<b>Homozygous Polled</b> 20523110									
CONNEALY JUDGMENT													
**KG JUSTIFIED 3023			**CONNEALY CONSENSUS 7229										
KG MISS MAGIC 1443			#ENTRINE OF CONANGA 9876										
#SCHIEFELBEIN EFFECTIVE 61			**SITZ WISDOM 481T										
MS SCC EFFECTIVE 6037			KG MISS MAGIC 3528										
SANDPOINT JODYS KATIE 2118			#CAR EFFICIENT 534										
			+*FROSTY ANSWER 3979										
			**SITZ UPWARD 307R										
			SANDPOINT JODYS KATIE 9089										
<b>CED</b>	<b>BW</b>	<b>WW</b>	<b>YW</b>	<b>HP</b>	<b>MILK</b>	<b>\$EN</b>	<b>CW</b>	<b>MARB</b>	<b>RE</b>	<b>\$M</b>	<b>\$W</b>	<b>\$B</b>	<b>\$C</b>
9	0.5	56	101		26	0				80	51		
30%	35%	65%	65%		50%	15%				10%	70%		
<b>BW</b>						<b>adj. WW</b>							
87						628 (97)							

These Justified Sons are known for Easy Calving fast growing and make Phenomenal Females.



MR SCC JUSTIFIED 210 Sells as Lot 68.



## 68 MR SCC Justified 210

<b>PB Angus Bull</b> 1/16/2022		<b>Homozygous Black</b> 210		<b>Homozygous Polled</b> 20523112									
CONNEALY JUDGMENT													
**KG JUSTIFIED 3023			**CONNEALY CONSENSUS 7229										
KG MISS MAGIC 1443			#ENTRINE OF CONANGA 9876										
BAR S COWTOWN 2903			**SITZ WISDOM 481T										
MS SCC COWTOWN 6035			KG MISS MAGIC 3528										
BAR S EDELLA 2081			#+B C LOOKOUT 7024										
			BAR S BLACKCAP 9902										
			**S A V FINAL ANSWER 0035										
			BAR S EDELLA 0546										
<b>CED</b>	<b>BW</b>	<b>WW</b>	<b>YW</b>	<b>HP</b>	<b>MILK</b>	<b>\$EN</b>	<b>CW</b>	<b>MARB</b>	<b>RE</b>	<b>\$M</b>	<b>\$W</b>	<b>\$B</b>	<b>\$C</b>
6	0.6	61	104		27	-8				89	58		
55%	35%	50%	60%		45%	25%				3%	50%		
<b>BW</b>						<b>adj. WW</b>							
89						677 (105)							

From an excellent Cow. Save the Daughters for Cows.

## 69 NR SCC Justified 201

<b>PB Angus Bull</b> 1/16/2022		<b>Homozygous Black</b> 201		<b>Homozygous Polled</b> 20523111									
CONNEALY JUDGMENT													
**KG JUSTIFIED 3023			**CONNEALY CONSENSUS 7229										
KG MISS MAGIC 1443			#ENTRINE OF CONANGA 9876										
#SCHIEFELBEIN EFFECTIVE 61			**SITZ WISDOM 481T										
MS SCC EFFECTIVE 6033			KG MISS MAGIC 3528										
MS SCC IN BIS 325B			#CAR EFFICIENT 534										
			+*FROSTY ANSWER 3979										
			GCC BISMARCK 032										
			MS SCC IN FOCUS 175Y										
<b>CED</b>	<b>BW</b>	<b>WW</b>	<b>YW</b>	<b>HP</b>	<b>MILK</b>	<b>\$EN</b>	<b>CW</b>	<b>MARB</b>	<b>RE</b>	<b>\$M</b>	<b>\$W</b>	<b>\$B</b>	<b>\$C</b>
9	0.3	56	102		27	-1	I+27	I+.93	I+.35	91	52	136	267
30%	30%	65%	65%		45%	15%	95%	20%	90%	2%	65%	55%	25%
<b>BW</b>						<b>adj. WW</b>							
90						628 (97)							

Justified Son out of an Effective Dam, Calving Ease, and Marbling.

## 70 MR SCC Justified 211

<b>PB Angus Bull</b> 1/20/2022		<b>Homozygous Black</b> 211		<b>Homozygous Polled</b> 20523104									
CONNEALY JUDGMENT													
**KG JUSTIFIED 3023			**CONNEALY CONSENSUS 7229										
KG MISS MAGIC 1443			#ENTRINE OF CONANGA 9876										
**SITZ TOP GAME 561X			**SITZ WISDOM 481T										
MS SCC TOP GAME 858			KG MISS MAGIC 3528										
MS SCC LAST CALL 256Z			#+GDAR GAME DAY 449										
			#SITZ PRIDE 88T										
			SCC MR FINAL ANSWER-44W										
			MS SCC BOYD NEW DAY-242X										
<b>CED</b>	<b>BW</b>	<b>WW</b>	<b>YW</b>	<b>HP</b>	<b>MILK</b>	<b>\$EN</b>	<b>CW</b>	<b>MARB</b>	<b>RE</b>	<b>\$M</b>	<b>\$W</b>	<b>\$B</b>	<b>\$C</b>
10	-0.2	58	105		30	-11				77	57		
20%	20%	60%	60%		25%	35%				15%	50%		
<b>BW</b>						<b>adj. WW</b>							
81						664 (103)							

Sound Made, Deep Sided, Female Producer.



# Swanson Cattle Co. *Angus Bulls*

## 71 MR SCC Justified 215

PB Angus Bull 1/15/2022		Homozygous Black 215		Homozygous Polled 20523106									
CONNEALY JUDGMENT													
**KG JUSTIFIED 3023			**CONNEALY CONSENSUS 7229										
KG MISS MAGIC 1443			#ENTRINE OF CONANGA 9876										
**BALDRIDGE WAYLON W34			**SITZ WISDOM 481T										
MS SCC WAYLON 855			KG MISS MAGIC 3528										
BAR S PRIDE 5009			#+*GAR-EGL PROTEGE										
			*BALDRIDGE BLACKCAP T163										
			#+*COLEMAN CHARLO 0256										
			BAR S PRIDE 8620										
CED	BW	WW	YW	HP	MILK	\$EN	CW	MARB	RE	\$M	\$W	\$B	\$C
8	-0.2	61	106		25	-6				92	56		
35%	20%	50%	55%		60%	25%				2%	55%		
BW						adj. WW							
80						646 (100)							

These Justifies aons are all stamped the same. This one should be a Herdsire.

## 72 MR SCC Justified 219

PB Angus Bull 1/15/2022		Homozygous Black 219		Homozygous Polled 20554014									
CONNEALY JUDGMENT													
**KG JUSTIFIED 3023			**CONNEALY CONSENSUS 7229										
KG MISS MAGIC 1443			#ENTRINE OF CONANGA 9876										
*WAR PYWT'S WARWAGON D502			**SITZ WISDOM 481T										
MS SCC WARWAGON 0115			KG MISS MAGIC 3528										
SCC MS CONSENSUS 553C			#+*BASIN PAYWEIGHT 1682										
			WAR PRODUCT B501 Z536										
			SANDPOINT CONSENSUS 2008										
			BAR S EDELLA 2081										
CED	BW	WW	YW	HP	MILK	\$EN	CW	MARB	RE	\$M	\$W	\$B	\$C
13	-2.1	57	100		30	-7				92	60		
10%	3%	65%	65%		25%	25%				2%	40%		
BW						adj. WW							
67						698 (98)							

Dam is a young Warwagon Daughter doing a nice job.

## 73 MR SCC Justified 218

PB Angus Bull 1/14/2022		Homozygous Black 218		Homozygous Polled 20563441									
CONNEALY JUDGMENT													
**KG JUSTIFIED 3023			**CONNEALY CONSENSUS 7229										
KG MISS MAGIC 1443			#ENTRINE OF CONANGA 9876										
#+*LD CAPITALIST 316			**SITZ WISDOM 481T										
MS SCC CAP 316 0116			KG MISS MAGIC 3528										
MS SCC TOP GAME 858			#*CONNEALY CAPITALIST 028										
			LD DIXIE ERICA 2053										
			**SITZ TOP GAME 561X										
			MS SCC LAST CALL 256Z										
CED	BW	WW	YW	HP	MILK	\$EN	CW	MARB	RE	\$M	\$W	\$B	\$C
13	-2.1	59	104		29	-8				92	61		
10%	3%	60%	60%		30%	25%				2%	40%		
BW						adj. WW							
65						704 (99)							

Justified on Capitolist 316 showing Growth and Calving Ease.







MR SCC WARWAGON 202 Sells as Lot 74.

**74 MR SCC Warwagon 202**

PB Angus Bull 1/26/2022 Homozygous Black 202 Homozygous Polled 20442381

#+\*BASIN PAYWEIGHT 1682 #+\*BASIN PAYWEIGHT 0065  
 21AR O LASS 7017  
 #\*CONNEALY FINAL PRODUCT  
 WAR ROCKY Z536 U486  
 #\*O C C PAXTON 730P  
 +BOHI ABIGALE 6014  
 SANDPOINT CONSENSUS 2008  
 RR ERICA DIANNA 6519

**MS SCC CHARLO 7030**

MS SCC CZ8 313B

CED	BW	WW	YW	HP	MILK	SEN	CW	MARB	RE	\$M	\$W	\$B	\$C
10	0.2	56	101		31	-3				67	56		
20%	30%	65%	65%		20%	20%				40%	55%		
										<b>adj. WW</b>			
										<b>84</b>			
										<b>623 (96)</b>			

Deep full of Muscle. Herdsire Kind.



WAR PYWT'S WARWAGON D502 Sire of Lots 74-83.

*Reference*

**WAR Pywt's Warwagon D502**

PB Angus Bull 07-25-2016 Homozygous Black D502 Homozygous Polled \*18771144

#+\*BASIN PAYWEIGHT 0065 #VERMILION PAYWEIGHT J847  
 +BASIN LUCY 3829  
 #HARB PENDLETON 765 J H  
 21AR O LASS F24A  
 \*CONNEALY PRODUCT 568  
 #EBONISTA OF CONANGA 471  
 #\*VAR ROCKY 80029  
 WAR MAINLINE U486 2309

CED	BW	WW	YW	HP	MILK	SEN	CW	MARB	RE	\$M	\$W	\$B	\$C
+13	-.6	+63	+113	+6.9	+38	-15	+49	+52	+33	+67	+75	+128	+233
10%	15%	45%	45%	95%	3%	45%	40%	50%	85%	30%	10%	60%	55%

Warwagon sires calving ease, phenotype, and daughters that are sound, broody, with great udders. His sons catch your eye. His progeny have topped the Waggon hammer sale.





**MR SCC WARWAGON 223** Sells as Lot 75.

**75 MR SCC Warwagon 223**

<b>PB Angus Bull</b> 2/25/2022		<b>Homozygous Black</b> 223	<b>Homozygous Polled</b> 20442382										
#+*BASIN PAYWEIGHT 1682		#+*BASIN PAYWEIGHT 0065 21AR O LASS 7017 #*CONNEALY FINAL PRODUCT WAR ROCKY Z536 U486 #CAR EFFICIENT 534 +*FROSTY ANSWER 3979 BAR S COWTOWN 2903 MS SCC LAST CALL 256Z											
<b>*WAR PYWT'S WARWAGON D502</b>													
WAR PRODUCT B501 Z536 #*SCHIEFELBEIN EFFECTIVE 61													
<b>M S SCC EFFECTIVE 7025</b>													
SCC MS COWTOWN 555C													
<b>CED</b>	<b>BW</b>	<b>WW</b>	<b>YW</b>	<b>HP</b>	<b>MILK</b>	<b>SEN</b>	<b>CW</b>	<b>MARB</b>	<b>RE</b>	<b>\$M</b>	<b>\$W</b>	<b>\$B</b>	<b>\$C</b>
13	-0.8	52	94		30	-3	I+32	I+.56	I+.33	79	54	117	231
10%	15%	80%	75%		25%	20%	85%	55%	90%	15%	60%	80%	65%
										<b>BW</b>		<b>adj. WW</b>	
										83		618 (96)	

Warwagon, Effective, Payweight 1682 all in this pedigree. He will Calve Easy and Watch them Grow.

**76 MR SCC Warwagon 221**

<b>PB Angus Bull</b> 2/28/2022		<b>Homozygous Black</b> 221	<b>Homozygous Polled</b> 20442380										
#+*BASIN PAYWEIGHT 1682		#+*BASIN PAYWEIGHT 0065 21AR O LASS 7017 #*CONNEALY FINAL PRODUCT WAR ROCKY Z536 U486 #CONNEALY FOREFRONT #EBONY LIT OF CONANGA 840 #CONNEALY FREIGHTLINER #BAR S BARBARA 8052											
<b>*WAR PYWT'S WARWAGON D502</b>													
WAR PRODUCT B501 Z536 #CONNEALY FRONT PAGE 0228													
<b>BAR S BARBARA 2245</b>													
BAR S BARBARA 3151													
<b>CED</b>	<b>BW</b>	<b>WW</b>	<b>YW</b>	<b>HP</b>	<b>MILK</b>	<b>SEN</b>	<b>CW</b>	<b>MARB</b>	<b>RE</b>	<b>\$M</b>	<b>\$W</b>	<b>\$B</b>	<b>\$C</b>
10	-0.3	59	102		32	-13	I+30	I+.31	I+.28	62	61	106	199
20%	20%	60%	65%		15%	40%	90%	85%	95%	55%	40%	90%	90%
										<b>BW</b>		<b>adj. WW</b>	
										79		701 (108)	

Solid Bull. Solid Numbers.







MR SCC WARWAGON 217 Sells as Lot 77.

**77 MR SCC Warwagon 217**

PB Angus Bull 1/21/2022      Homozygous Black 217      Homozygous Polled 20442383

#+\*BASIN PAYWEIGHT 1682      #+\*BASIN PAYWEIGHT 0065  
 21AR O LASS 7017  
 #\*CONNEALY FINAL PRODUCT  
 WAR ROCKY Z536 U486  
 #+\*S A V RESOURCE 1441      +RITO 707 OF IDEAL 3407 7075  
 \*S A V BLACKCAP MAY 4136  
 #\*S A V FINAL ANSWER 0035  
 BAR S PRINCESS 9091

**MS SCC RESOURCE 6011**

#MS DJS FINAL ANSWER 289Z

CED	BW	WW	YW	HP	MILK	\$EN	CW	MARB	RE	\$M	\$W	\$B	\$C
8	0.9	62	111	I+8.1	30	-14	I+42	I+29	I+44	64	62	113	211
35%	45%	50%	50%	90%	25%	45%	65%	85%	80%	50%	35%	85%	80%
<b>BW</b>											<b>adj. WW</b>		
87											642 (99)		

Dam is an Outstanding Resource Daughter that Don't Miss. Build your Herd around this one. Herdsire.



**78 MR SCC Warwagon 209**

PB Angus Bull 2/14/2022      Homozygous Black 209      Homozygous Polled 20442385

#+\*BASIN PAYWEIGHT 1682      #+\*BASIN PAYWEIGHT 0065  
 21AR O LASS 7017  
 #\*CONNEALY FINAL PRODUCT  
 WAR ROCKY Z536 U486  
 #BR MIDLAND  
 BAR S BLACKBIRD 3025  
 #CONNEALY FREIGHTLINER  
 BAR S EDELLA 0040

**BAR S EDELLA 2444**

BAR S EDELLA 6207

CED	BW	WW	YW	HP	MILK	\$EN	CW	MARB	RE	\$M	\$W	\$B	\$C
13	-1	58	99	I+8.1	28	-8	I+31	I+47	I+27	66	61	114	214
10%	10%	60%	70%	90%	35%	25%	90%	70%	95%	40%	40%	85%	80%
<b>BW</b>											<b>adj. WW</b>		
77											671 (104)		

Moderate, Attractive, Warwagon Aon, Heifer.

**79 MR SCC Warwagon 213**

PB Angus Bull 2/3/2022      Homozygous Black 213      Homozygous Polled 20442386

#+\*BASIN PAYWEIGHT 1682      #+\*BASIN PAYWEIGHT 0065  
 21AR O LASS 7017  
 #\*CONNEALY FINAL PRODUCT  
 WAR ROCKY Z536 U486  
 #CAR EFFICIENT 534  
 #\*SCHIEFFELBEIN EFFECTIVE 61  
 #\*FROSTY ANSWER 3979  
 HANS KRUGERRAND 713  
 #LADY HANS HEARTLAND 566

**MS SCC EFFECTIVE 6016**

LADY HANS KRUGERRAND 9105

CED	BW	WW	YW	HP	MILK	\$EN	CW	MARB	RE	\$M	\$W	\$B	\$C
15	-2.3	50	89		29	-4	I+38	I+53	I+36	64	54	124	225
2%	3%	85%	85%		30%	20%	75%	60%	85%	50%	60%	70%	70%
<b>BW</b>											<b>adj. WW</b>		
70											610 (94)		

Heifer Bull. Deluxe.





MR SCC WARWAGON 1212 Sells as Lot 81.

## 80 MR SCC Warwagon 206

**PB Angus Bull** 1/21/2022  
 #+\*BASIN PAYWEIGHT 1682  
 #+\*BASIN PAYWEIGHT 0065  
 21AR O LASS 7017  
 #\*CONNEALY FINAL PRODUCT  
 WAR PRODUCT B501 Z536  
 #+\*S A V RESOURCE 1441  
 WAR ROCKY Z536 U486  
 +RITO 707 OF IDEAL 3407 7075  
 \*S A V BLACKCAP MAY 4136  
 #BR MIDLAND  
 +ERISKAY OF ROLLIN ROCK 9221

MS SCC RESOURCE 6019

CED	BW	WW	YW	HP	MILK	\$EN	CW	MARB	RE	\$M	\$W	\$B	\$C
9	0.6	57	105		28	-11	I+40	I+.34	I+-.51	63	53	119	217
30%	35%	65%	60%		35%	35%	70%	80%	70%	50%	65%	75%	75%
BW											adj. WW		
82											620 (96)		

I Love this Cross. Nice Bull.

## 82 MR SCC Warwagon 1214

**PB Angus Bull** 8/18/2021  
 #+\*BASIN PAYWEIGHT 1682  
 #+\*BASIN PAYWEIGHT 0065  
 21AR O LASS 7017  
 #\*CONNEALY FINAL PRODUCT  
 WAR PRODUCT B501 Z536  
 #\*S A V FINAL ANSWER 0035  
 WAR ROCKY Z536 U486  
 #SITZ TRAVELER 8180  
 S A V EMULOUS 8145  
 #+BOYD NEW DAY 8005  
 SMITH LADY 689

MS SCC FINAL ANSWER 364A

CED	BW	WW	YW	HP	MILK	\$EN	CW	MARB	RE	\$M	\$W	\$B	\$C
15	-2	51	91	I+8.7	33	-6	I+35	I+.42	I+-.32	65	60	108	205
2%	4%	80%	80%	85%	15%	25%	80%	75%	90%	45%	40%	90%	85%
BW											adj. WW		
72											602 (93)		

Heifer Bull. Top 4% BW, Top 2% CED, Top 10% CEM.



MR SCC WARWAGON 206 Sells as Lot 80.

## 81 MR SCC Warwagon 1212

**PB Angus Bull** 8/29/2021  
 #+\*BASIN PAYWEIGHT 1682  
 #+\*BASIN PAYWEIGHT 0065  
 21AR O LASS 7017  
 #\*CONNEALY FINAL PRODUCT  
 WAR PRODUCT B501 Z536  
 BAR S COWTOWN 2903  
 WAR ROCKY Z536 U486  
 #+B C LOOKOUT 7024  
 BAR S BLACKCAP 9902  
 #TC TOTAL 410  
 LADY HANS CHARGER 685

MS SCC COWTOWN 6062

CED	BW	WW	YW	HP	MILK	\$EN	CW	MARB	RE	\$M	\$W	\$B	\$C
10	-0.2	52	92		31	-11				70	54		
20%	20%	80%	80%		20%	35%				30%	60%		
BW											adj. WW		
79											628 (98)		

Absolute Herdsire, Deep, Thick, Soft, Sound, eaEasy Flething Stud Horse

## 83 MR SCC Warwagon 1217

**PB Angus Bull** 8/29/2021  
 #+\*BASIN PAYWEIGHT 1682  
 #+\*BASIN PAYWEIGHT 0065  
 21AR O LASS 7017  
 #\*CONNEALY FINAL PRODUCT  
 WAR PRODUCT B501 Z536  
 +\*GVC CONTENDER 058A  
 WAR ROCKY Z536 U486  
 #\*CONNEALY CONSENSUS 7229  
 \*GVC MISS GRIDIRON 778T  
 #S A V 8180 TRAVELER 004  
 G V C MISS LEGEND 472P

GVC EULIMA C032

CED	BW	WW	YW	HP	MILK	\$EN	CW	MARB	RE	\$M	\$W	\$B	\$C
6	1.2	53	92	I+9.5	26	-6	I+29	I+.27	I+.34	63	52	103	197
55%	50%	75%	80%	80%	50%	25%	90%	85%	90%	50%	65%	90%	90%
BW											adj. WW		
86											616 (96)		

Really Good to look at lots of Big Time Blood In this one.





BASIN PAYWEIGHT 006S Sire of Lot 84-87.

MR SCC PAYWEIGHT 1682 1218 Sells as Lot 85.

### 85 MR SCC Payweight 1682 1219

PB Angus Bull 8/30/2021 Homozygous Black 1219 Homozygous Polled 20522764

#+\*BASIN PAYWEIGHT 006S #VERMILION PAYWEIGHT J847  
 #+\*BASIN PAYWEIGHT 1682 +BASIN LUCY 3829  
 21AR O LASS 7017 #HARB PENDLETON 765 J H  
 #+\*COLEMAN CHARLO 0256 #\*O C C PAXTON 730P  
 #\*O C C ABIGALE 6014  
 #BAR S PRIDE 5019 +BAR S MIDLAND 6388  
 #BAR S PRIDE 1231 BAR S PRIDE 7075

CE	BW	WW	YW	HP	MILK	SEN	CW	MARB	RE	\$M	\$W	\$B	\$C
6	1	58	106		29	-2				66	54		
55%	45%	60%	55%		30%	15%				40%	60%		
BW											adj. WW		
88											620 (96)		

Long aged Bull possible Herdsire out the great Payweight 1682. He Sires some of the Deepest Cattle in the Breed.

### 86 544C

Commercial Angus Bull 8/23/2021 Homozygous Black 544C Homozygous Polled commercial

#+\*BASIN PAYWEIGHT 006S #VERMILION PAYWEIGHT J847  
 #+\*BASIN PAYWEIGHT 1682 +BASIN LUCY 3829  
 21AR O LASS 7017 #HARB PENDLETON 765 J H  
 SANDPOINT CONSENSUS Z008 21AR O LASS F24A

SCC 544 MS SCC NEW DAY 201X

CE	BW	WW	YW	HP	MILK	SEN	CW	MARB	RE	\$M	\$W	\$B	\$C
BW											WW		
83											628 (actual weight on 3/15/2022)		

Good Angus Bull, sells as Commercial.

### 87 MR SCC 1682 308J

PB Angus Bull 9/4/2021 Homozygous Black 308J Homozygous Polled 20522767

#+\*BASIN PAYWEIGHT 006S #VERMILION PAYWEIGHT J847  
 #+\*BASIN PAYWEIGHT 1682 +BASIN LUCY 3829  
 21AR O LASS 7017 #HARB PENDLETON 765 J H  
 \*MCCURRY LIFE LINE 9003 #\*S A V FINAL ANSWER 0035  
 #\*S A V IRON MOUNTAIN 8066  
 \*MCCURRY ROYAL LADY 4242 +\*MCCURRY MISS WIX 6027  
 \*MCCURRY ROYAL LADY 1169 \*MARANDS ROYAL LADY 4100

CE	BW	WW	YW	HP	MILK	SEN	CW	MARB	RE	\$M	\$W	\$B	\$C
				I+5.6									
				95%									
BW											adj. WW		
87											602 (100)		

Payweight 1682 Son back to Final Answer.

## Reference

### Basin Payweight 1682

PB Angus Bull 02-11-2011 Homozygous Black 1682 Homozygous Polled #+\*17038724

#VERMILION PAYWEIGHT J847 #VERMILION DATELINE 7078  
 #+\*BASIN PAYWEIGHT 006S VERMILION LASS 7969  
 +BASIN LUCY 3829 #C A FUTURE DIRECTION 5321  
 #HARB PENDLETON 765 J H BASIN LUCY 178E  
 21AR O LASS 7017 #\*S A V FINAL ANSWER 0035  
 #\*VDAR LEGEND 1281 #H A R B BLACK LADY 375 J H  
 21AR O LASS F24A #21AR O LASS A24

CE	BW	WW	YW	HP	MILK	SEN	CW	MARB	RE	\$M	\$W	\$B	\$C
+7	+6	+66	+118	+6.8	+31	-5	+51	+58	+26	+72	+85	+137	+250
45%	35%	35%	35%	95%	20%	25%	35%	45%	90%	20%	2%	50%	40%

Calving ease with exceptional performance and phenotype. Top 10% CE, Top 20% CW, and Top 25% WW and YW. The Payweight 1682 cattle have a lot of middle and fleshing ability.

### 84 MR SCC Payweight 1682 1213

PB Angus Bull 8/26/2021 Homozygous Black 1213 Homozygous Polled 20522755

#+\*BASIN PAYWEIGHT 006S #VERMILION PAYWEIGHT J847  
 #+\*BASIN PAYWEIGHT 1682 +BASIN LUCY 3829  
 21AR O LASS 7017 #HARB PENDLETON 765 J H  
 +\*BC PURE CLASS 413A 21AR O LASS F24A  
 #\*MCCURRY BLACKCAP 5018 BC CLASSIC 385-7  
 #\*MCCURRY BLACKCAP 3032 CAF PURE PRIDE EXT 99  
 \*MCCURRY LIFE LINE 9003  
 \*MCCURRY BLACKCAP 9102

CE	BW	WW	YW	HP	MILK	SEN	CW	MARB	RE	\$M	\$W	\$B	\$C
5	1.7	55	100	I+6.4	28	-5				58	50		
60%	65%	70%	65%	95%	35%	20%				65%	70%		
BW											adj. WW		
87											607 (94)		

Son of Payweight 1682 one of the Best Ever.





LD CAPITALIST 316 Sire of Lot 88.

*Reference*

**LD Capitalist 316**

<b>PB Angus Bull</b> 01-26-2013	<b>Homozygous Black</b> 316	<b>Homozygous Polled</b> #+*17666102
#*S A V FINAL ANSWER 0035	#SITZ TRAVELER 8180 S A V EMULOUS 8145	#C R A BEXTOR 872 5205 608 #G A R PRECISION 1680 C A MISS POWER FIX 308 LD ROYCE ONAROLL 810 DIXIE ERICA OF R R 8553
#*CONNEALY CAPITALIST 028 PRIDES PITA OF CONANGA 8821 #C A FUTURE DIRECTION 5321		
<b>LD DIXIE ERICA 2053</b> LD DIXIE ERICA OAR 0853		

CED	BW	WW	YW	HP	MILK	\$EN	CW	MARB	RE	\$M	\$W	\$B	\$C
+12	-.6	+65	+112	+6.9	+25	-5	+54	+.68	+.62	+69	+78	+151	+265
15%	15%	40%	45%	95%	55%	25%	30%	35%	45%	25%	10%	30%	25%

Calving ease bull that is phenotypically phenomenal, heavy muscle, he combines calving ease with power and performance.

**88 MR VSCC Cap 316 1216**

<b>PB Angus Bull</b> 8/23/2021	<b>Homozygous Black</b> 1216	<b>Homozygous Polled</b> 20548214
#*CONNEALY CAPITALIST 028	#*S A V FINAL ANSWER 0035 PRIDES PITA OF CONANGA 8821 #C A FUTURE DIRECTION 5321 LD DIXIE ERICA OAR 0853 #+ B C LOOKOUT 7024 BAR S BLACKCAP 9902 #S A V PIONEER 7301 +SANDPOINT BLACKCAP 0664	#*LD CAPITALIST 316 LD DIXIE ERICA 2053 BAR S COWTOWN 2903
<b>MS SCC COWTOWN 856</b> SANDPOINT BLACKCAP 2054		

CED	BW	WW	YW	HP	MILK	\$EN	CW	MARB	RE	\$M	\$W	\$B	\$C
13	-1.3	59	97		25	-5				79	58		
10%	10%	60%	70%		60%	20%				15%	50%		
<b>BW</b>						<b>adj. WW</b>							
66						644 (100)							

Herd sire. Cap 316 crossed with COWTOWN, Heifer Bull.

MR VSCC CAP 316 1216 Sells as Lot 88.

**89 MR SCC Stunner 222**

<b>PB Angus Bull</b> 1/15/2022	<b>Homozygous Black</b> 222	<b>Homozygous Polled</b> 20522848
#+*LD CAPITALIST 316	#*CONNEALY CAPITALIST 028 LD DIXIE ERICA 2053 #MCATL PURE PRODUCT 903-55 MCATL BLACKBIRD 1378-573 #*CONNEALY CONSENSUS 7229 +SANDPOINT BLACKBIRD 0877 #*MYTTY IN FOCUS T J BLACKCAP JUDY 153	#*MUSGRAVE 316 STUNNER #MCATL BLACKBIRD 831-1378 SANDPOINT CONSENSUS 2008
<b>MS SCC CZ8 305B</b> T J BLACKCAP JUDY 844		

CED	BW	WW	YW	HP	MILK	\$EN	CW	MARB	RE	\$M	\$W	\$B	\$C
6	0.8	60	102		29	-13	I+45	I+66	I+.46	69	59	140	251
55%	40%	55%	65%		30%	40%	60%	45%	75%	35%	45%	50%	40%
<b>BW</b>						<b>adj. WW</b>							
83						615 (95)							

Stunner Son with Consensus 7229 in the Pedigree. Royally Breed.

**90 MS SCC Stunner 157K**

<b>PB Angus Bull</b> 1/30/2022	<b>Homozygous Black</b> 157K	<b>Homozygous Polled</b> 20522846
#+*LD CAPITALIST 316	#*CONNEALY CAPITALIST 028 LD DIXIE ERICA 2053 #MCATL PURE PRODUCT 903-55 MCATL BLACKBIRD 1378-573 #*G A R PREDESTINED *SHAMROCKS BEEBEE QUEEN 3095 +SCHIEFELBEIN JACKAL 803 FROSTY BANDO 4274	#*MUSGRAVE 316 STUNNER #MCATL BLACKBIRD 831-1378 #+*PA POWER TOOL 9108
<b>FROSTY ELBA 2154</b> #FROSTY ELBA 2926		

CED	BW	WW	YW	HP	MILK	\$EN	CW	MARB	RE	\$M	\$W	\$B	\$C
I+3	I+1.6	I+64	I+113	I+9.8	I+33	-21	I+45	I+.95	I+.54	55	68	148	247
75%	60%	45%	45%	75%	15%	65%	60%	20%	65%	75%	25%	35%	45%
<b>BW</b>						<b>adj. WW</b>							
88						616 (100)							

Stunner Bred Calves will come easy. High Marbling Bull.

**91 MR SCC Stunner 214**

<b>PB Angus Bull</b> 2/16/2022	<b>Homozygous Black</b> 214	<b>Homozygous Polled</b> 20442388
#*MUSGRAVE 316 STUNNER	#+*LD CAPITALIST 316 #MCATL BLACKBIRD 831-1378 #*CONNEALY CONFIDENCE 0100 #BAR S PRIDE 0959 #+GDAR GAME DAY 449 #SITZ PRIDE 88T #*S A V FINAL ANSWER 0035 BAR S PRINCESS 9091	#*BAR S STUNNER 0081 +*BAR S PRIDE 4851 #*SITZ TOP GAME 561X
<b>#MS SCC TOP GAME 865</b> #MS DJS FINAL ANSWER 289Z		

CED	BW	WW	YW	HP	MILK	\$EN	CW	MARB	RE	\$M	\$W	\$B	\$C
12	-1	67	110		32	-15	I+35	I+.60	I+.46	67	71	123	227
10%	10%	35%	50%		15%	45%	80%	55%	75%	40%	15%	70%	65%
<b>BW</b>						<b>adj. WW</b>							
79						717 (111)							

Stunner Bred, with Final Answer, Connealy Confedence. Game Day and Cap 316 in his lineage Heifer Bull.





1DJSH 104J Sells as Lot 94.

**92 1DJS 101J**

Cat 1A 100% AR Bull  
8/26/2021

101J 4632437

BROWN SYNERGY X7838													BECKTON NEBULA P P707			
MNZI SYNERGY M04C													C-BAR & BROWN ABIGRACE T714			
TCCC GRACIE 2456Z													RED SIX MILE SAKIC 8325			
BROWN PREMIER X7876													BROWN MS ALPHA ROMEO S6953			
LSF SRR RAINBOW C5334													BECKTON NEBULA P P707			
SRR RAINBOW 2181-692													BROWN MS DESTINATION T7664			
													SUTH BETTER HUCKLEBERRY 76W			
													SRR RAINBOW 692-6121			
ProS	HB	GM	CED	BW	WW	YW	MILK	HPG	STAY	CW	MARB	YG	RE			
101	73	28	14	-4	52	83	28	11	18	12	0.5	0.14	-0.22			
36%	17%	70%	28%	15%	78%	78%	26%	62%	19%	88%	30%	86%	98%			
BW							adj. WW									
69							618 (94)									

Fall Bull Ready for Work.

**93 1DJS 103J**

Cat 1A 100% AR Bull  
8/28/2021

103J 4632433

BROWN SYNERGY X7838													BECKTON NEBULA P P707			
MNZI SYNERGY M04C													C-BAR & BROWN ABIGRACE T714			
TCCC GRACIE 2456Z													RED SIX MILE SAKIC 8325			
LSF NIGHT CALVER 9921W													BROWN MS ALPHA ROMEO S6953			
LSF SRR GILDA C5244													MESSMER PACKER S008			
LSF GILDA D1017 U8000													LSF DELLA P4078 U8051			
													BIEBER ROMERO 9136			
													LCHMN GILDA D1017			
ProS	HB	GM	CED	BW	WW	YW	MILK	HPG	STAY	CW	MARB	YG	RE			
120	87	33	13	-1.9	63	102	29	15	17	16	0.39	0.08	0.16			
13%	5%	61%	51%	49%	39%	40%	17%	8%	24%	78%	55%	58%	43%			
BW							adj. WW									
83							646 (99)									

Older Bull with some Power.

**94 1DJS 104J**

Cat 1A 100% AR Bull  
9/24/2021

104J 4632475

LEACHMAN PLEDGE A282Z													LSF NEXTPECTION 0083X			
LSF SRR PRIME INDEX 7503E													LCOO ZARA TG004			
BROWN MS P707 X7583													BECKTON NEBULA P P707			
BROWN GOLD MINE A7610													C-BAR & BROWN ABIGRACE T714			
LSF SRR RED FAY W9002 D6326													PARINGA IRON ORE E27			
LSF RED FAY T7010 W9002													BROWN MS 17P Y7699			
													FEDDES BIG SKY R9			
													LSF RED FAY N3038 T7010			
ProS	HB	GM	CED	BW	WW	YW	MILK	HPG	STAY	CW	MARB	YG	RE			
130	63	67	10	-0.4	78	121	24	14	17	30	0.84	0.1	0.08			
7%	34%	7%	86%	77%	5%	8%	61%	13%	26%	23%	2%	71%	61%			
BW							adj. WW									
81							757 (116)									

Herd sire Top 5% WW, Top 9% YW, Top 2% Marbling, Good Bull.

**95 1DJS 107J**

Cat 3 75% AR 24.2% SM 0.8% XX Bull  
9/18/2021

107J 4632447

LEACHMAN PLEDGE A282Z													LSF NEXTPECTION 0083X			
LSF SRR PRIME INDEX 7503E													LCOO ZARA TG004			
BROWN MS P707 X7583													BECKTON NEBULA P P707			
227B													C-BAR & BROWN ABIGRACE T714			
LSF SRR CHARISMA A3462 D6349													WS BEEF KING W107			
LSF SRR CHARISMA T7061 A3462													HOOKS MIKA 141M			
													HXC CONQUEST 4405P			
													LSF CHARISMA K1430 T7061			
ProS	HB	GM	CED	BW	WW	YW	MILK	HPG	STAY	CW	MARB	YG	RE			
137	88	49	12	-2.5	62	95	22	15	18	16	0.75	-0.05	0.23			
4%	5%	27%	54%	37%	45%	56%	83%	7%	16%	76%	5%	7%	29%			
BW							adj. WW									
77							661 (101)									

Good Bull will cover many Cows. Top 5% Marbling.





1DJS 105J Sells as Lot 98.

**96 1DJS 109J**

Cat 1A 100% AR Bull  
9/7/2021

109J 4632445

LEACHMAN PLEDGE A282Z

**LSF SRR PRIME INDEX 7503E**

BROWN MS P707 X7583  
LSF SRR REDEMPTION 4210B

**LSF SRR VICILA A3044 D6330**

LSF SRR VICILA Y1170 A3044

LSF NEXTPECTION 0083X  
LCOC ZARA TG004  
BECKTON NEBULA P P707  
C-BAR & BROWN ABIGRACE T714  
BROWN JYJ REDEMPTION Y1334  
LSF CRYSTAL LA394 W9216  
BIEBER RUSHMORE Y106  
LSF VICILA R5168 Y1170

ProS	HB	GM	CED	BW	WW	YW	MILK	HPG	STAY	CW	MARB	YG	RE
117	72	46	13	-3.3	61	102	24	15	16	18	0.75	0.19	-0.13
15%	19%	34%	46%	24%	50%	40%	63%	8%	38%	71%	5%	96%	95%
BW						adj. WW							
69						648 (99)							

These Pledge (Prime Index) Sons all Marble but the Best part is the Daughters.

**97 1DJS 110J**

Cat 1A 100% AR Bull  
9/14/2021

110J 4632485

LEACHMAN PLEDGE A282Z

**LSF SRR PRIME INDEX 7503E**

BROWN MS P707 X7583  
5L RIGHT VIEW 1611-40A

**LSF SRR FLO-MARIE 922 D6552**

SRR FLO-MARIE 922-733

LSF NEXTPECTION 0083X  
LCOC ZARA TG004  
BECKTON NEBULA P P707  
C-BAR & BROWN ABIGRACE T714  
BUF CRK THE RIGHT KIND U199  
5L DEE DEE 4479-1611  
5L TRAVLIN EXPRESS 1892-6295  
SRR FLO-MARIE 733-532

ProS	HB	GM	CED	BW	WW	YW	MILK	HPG	STAY	CW	MARB	YG	RE
127	76	51	13	-2.9	60	94	22	15	17	14	0.84	0.05	0.04
8%	14%	24%	40%	30%	52%	57%	84%	4%	32%	82%	2%	40%	70%
BW						adj. WW							
72						648 (99)							

Another High Marbling Pledge (Prime Index) son. Build a Herd.

**98 1DJS 105J**

Cat 1A 100% AR Bull  
9/7/2021

105J 4632481

LEACHMAN PLEDGE A282Z

**LSF SRR PRIME INDEX 7503E**

BROWN MS P707 X7583  
LSF SRR VICTORY 3013A

**LSF SRR MS RTTIME 2203 D6513**

SRR MISS RIGHT TIME 2203-G75

LSF NEXTPECTION 0083X  
LCOC ZARA TG004  
BECKTON NEBULA P P707  
C-BAR & BROWN ABIGRACE T714  
HXC CONQUEST 4405P  
LSF DINA T7103 Y1079  
SUTH BETTER HUCKLEBERRY 76W  
JSG MISS RIGHT TIME 750

ProS	HB	GM	CED	BW	WW	YW	MILK	HPG	STAY	CW	MARB	YG	RE
128	80	48	11	-1.1	68	111	22	12	18	17	0.79	0.16	-0.09
7%	10%	29%	70%	65%	22%	21%	80%	37%	13%	75%	3%	92%	91%
BW						adj. WW							
82						668 (102)							

A Top Bull. He will make Daughters and Feeders.

*Reference*

**LSF SRR PRIME INDEX 7503E**

Cat 1A 100% AR Bull  
4/2/2017

7503E 3733509

LSF NEXTPECTION 0083X

**LEACHMAN PLEDGE A282Z**

LCOC ZARA TG004  
BECKTON NEBULA P P707

**BROWN MS P707 X7583**

C-BAR & BROWN ABIGRACE T714

LSF JBOB EXPECTATION 6034S  
LSF CRYSTAL LA394 T7129  
GAR-EGL PROTEGE  
LCOC ZARA PG076  
BECKTON NEBULA M045  
BECKTON LANA M809 EP  
LJC MISSION STATEMENT P27  
BROWN MS ABIGRACE L7730

ProS	HB	GM	CED	BW	WW	YW	MILK	HPG	STAY	CW	MARB	YG	RE
154	91	63	14	-3.6	64	104	22	15	18	15	1.12	0.16	-0.07
3%	5%	13%	37%	22%	44%	41%	76%	16%	18%	74%	1%	84%	83%

Sire of Lots 94-98.





1DJS 102J Sells as Lot 99.

**99 1DJS 102J**

Cat 1A 100% AR Bull  
8/21/2021

102J 4632441

**35CC DOMAIN A163**

BECKTON DOMINOR T122 Z1  
35CC EUCLA X723  
5L INDEPENDENCE 560-298Y

BECKTON DOMINOR Z1 R610  
BKT LARKABEL R038 WA  
BASIN HOBO 0545  
BSKF EUCLA U278  
BUF CRK THE RIGHT KIND U199  
5L BLACK ADINA 525-560  
LCC NEW CHAPTER A705L  
LSF CRYSTAL G1382 LA394

**LSF SRR CRYSTAL T7129 D6034**

LSF CRYSTAL LA394 T7129

ProS	HB	GM	CED	BW	WW	YW	MILK	HPG	STAY	CW	MARB	YG	RE
96	48	48	16	-4.4	57	94	23	14	15	22	0.61	0.12	0.04
44%	63%	29%	11%	11%	65%	57%	72%	11%	60%	55%	15%	79%	70%
										<b>BW</b>		<b>adj. WW</b>	
										67		629 (96)	

Herd sire by Domain Progeny, will Calve Easy be Fertile with Excellent Carcass Traits.



*Reference*

**35CC DOMAIN A163**

Cat 1A 100% AR Bull  
3/26/2013

A163 1619642

**BECKTON DOMINOR T122 Z1**

BECKTON DOMINOR Z1 R610  
BKT LARKABEL R038 WA  
BASIN HOBO 0545

BECKTON DOMINOR ZC M919  
BECKTON SIERRA K557 LO  
BECKTON WARHAWK N560  
BECKTON LARKABEL N769 HR  
BASIN HOBO 79E  
BASIN ERICA 330E  
BASIN EXT 1925  
BSKF EUCLA P297

**35CC EUCLA X723**

BSKF EUCLA U278

ProS	HB	GM	CED	BW	WW	YW	MILK	HPG	STAY	CW	MARB	YG	RE
104	47	56	15	-1.4	63	105	27	11	17	33	0.59	0.22	0.1
32%	62%	19%	27%	57%	47%	40%	37%	55%	32%	22%	21%	95%	52%

Sire of Lots 99-103. Domain sires moderate framed, deep sided cattle with lots of muscle, and great feet. His daughters have good feet, rib shape and tremendous udders.



**GENEX**

35CC DOMAIN A163 Sire of Lots 99-103.





1DJS 108J Sells as Lot 101.

**100 1DJS 106J**

Cat 1A 100% AR Bull  
8/24/2021

106J 4632455

BECKTON DOMINOR T122 Z1													BECKTON DOMINOR Z1 R610 BKT LARKABEL R038 WA BASIN HOBO 0545				
35CC DOMAIN A163													BSKF EUCLA U278 BUF CRK THE RIGHT KIND U199				
35CC EUCLA X723 LSF RHO TITONKA Z721													MONTVUE 10K RACHILLE U393 BROWN JYJ REDEMPTION Y1334				
LSF SRR LASS B4087 D6008													LSF LASS N3152 T7118				
LSF LASS T7118 B4087																	
ProS	HB	GM	CED	BW	WW	YW	MILK	HPG	STAY	CW	MARB	YG	RE				
96	48	48	16	-3.2	61	99	27	13	15	29	0.47	0.14	0.01				
44%	64%	29%	15%	25%	50%	47%	32%	20%	54%	26%	36%	87%	76%				
BW							adj. WW										
74							654 (100)										

Dam is an Exceptional Cow. Nice Bull.

**101 1DJS 108J**

Cat 1A 100% AR Bull  
8/26/2021

108J 4632459

BECKTON DOMINOR T122 Z1													BECKTON DOMINOR Z1 R610 BKT LARKABEL R038 WA BASIN HOBO 0545				
35CC DOMAIN A163													BSKF EUCLA U278 LSF TAKEOVER 9943W				
35CC EUCLA X723 LSF SRR OVERTHROW 4029B													LSF DELLA X0090 Z2101 LSF PROSPECT 2035Z				
LSF SRR DELLA B4203 D6322													LSF DELLA T7146 Z2129				
LSF DELLA Z2129 B4203																	
ProS	HB	GM	CED	BW	WW	YW	MILK	HPG	STAY	CW	MARB	YG	RE				
109	59	51	14	-2.6	54	90	25	13	17	19	0.61	0.13	0.22				
24%	42%	25%	38%	35%	74%	65%	57%	25%	27%	68%	15%	84%	30%				
BW							adj. WW										
71							618 (94)										

Really Good Bull with Good Carcass Traits and Female Making Power. Dark Red. Herdsire.

**102 1DJS 112J**

Cat 1A 100% AR Bull  
8/19/2021

112J 4632463

BECKTON DOMINOR T122 Z1													BECKTON DOMINOR Z1 R610 BKT LARKABEL R038 WA BASIN HOBO 0545				
35CC DOMAIN A163													BSKF EUCLA U278 BECKTON JULIAN G5 S107				
35CC EUCLA X723 BECKTON JULIAN A538 N5													BKT PINE MARIE U621 NB HXC BIG IRON 0024X				
LSF SRR CRYSTAL Z2113 D6324													LSF CRYSTAL R5145 U8064				
LSF CRYSTAL U8064 Z2113																	
ProS	HB	GM	CED	BW	WW	YW	MILK	HPG	STAY	CW	MARB	YG	RE				
93	49	45	14	-1.4	59	100	25	15	15	29	0.42	0.13	0.07				
49%	63%	35%	38%	59%	56%	43%	52%	6%	51%	28%	48%	82%	63%				
BW							adj. WW										
78							637 (97)										

Good Mothers, Make Good Bulls.

**103 1DJS 114J**

Cat 1A 100% AR Bull  
8/31/2021

114J 4632479

BECKTON DOMINOR T122 Z1													BECKTON DOMINOR Z1 R610 BKT LARKABEL R038 WA BASIN HOBO 0545				
35CC DOMAIN A163													BSKF EUCLA U278 MESSMER PACKER S008				
35CC EUCLA X723 LSF NIGHT CALVER 9921W													LSF DELLA P4078 U8051 BIEBER ROMERO 9136				
LSF SRR BLKBIRD X0406 D6413													LSF BLACKBIRD 4055 N3080				
LSF BLACKBIRD N3080 X0406																	
ProS	HB	GM	CED	BW	WW	YW	MILK	HPG	STAY	CW	MARB	YG	RE				
118	59	59	13	-2.2	64	107	30	14	15	30	0.61	0.15	0.25				
15%	41%	14%	39%	43%	36%	30%	13%	12%	55%	24%	15%	89%	26%				
BW							adj. WW										
73							636 (97)										

Ready to Work Hard, Very Fertile, with Good Carcass Traits.



## 104 1DJS 102K

Cat 3 50% AR 50% XX Bull  
2/27/2022

102K 4632505

BASIN PAYWEIGHT 1682  
WAR PYWT'S WARWAGON D502  
WAR PRODUCT B501 Z536  
5L BOURNE 2612-400C  
1DJS 888F  
LSF SRR MISS KAY Z2318 D6077

ProS	HB	GM	CED	BW	WW	YW	MILK	HPG	STAY	CW	MARB	YG	RE
98	31	68	15	-4	48	73	24	0	9	33	0.38	0.02	0.18
40%	89%	6%	16%	15%	88%	89%	67%	98%	97%	16%	58%	25%	39%
<b>BW</b>							<b>adj. WW</b>						
71							737 ( )						

Warwagon Son 1/2 Angus 1/2 Red Angus. He will add Calving Ease and Growth.

## 105 1DJS 103K

Cat 1A 100% AR Bull  
1/17/2022

103K 4632467

BROWN SYNERGY X7838  
MNZI SYNERGY M04C  
TCCC GRACIE 2456Z  
LSF SRR VICTORY 3013A  
LSF SRR MS CRICKET D6017  
LSF SRR MISS CRICKET B4354

ProS	HB	GM	CED	BW	WW	YW	MILK	HPG	STAY	CW	MARB	YG	RE
96	78	18	15	-4.7	51	82	28	9	19	8	0.4	0.12	-0.2
44%	12%	86%	18%	8%	81%	79%	24%	85%	8%	94%	53%	78%	98%
<b>BW</b>							<b>adj. WW</b>						
71							614 (90)						

Top 9% BW, Top 18% CED, Top 6% CEM, Top 10% Stayability.

## 106 1DJS 104K

Cat 1A 100% AR Bull  
1/22/2022

104K 4632497

BROWN SYNERGY X7838  
MNZI SYNERGY M04C  
TCCC GRACIE 2456Z  
LSF SRR PRIME INDEX 7503E  
MISS SCC PLEDGE 983G  
LSF SRR LAKOTA B4017 D6251

ProS	HB	GM	CED	BW	WW	YW	MILK	HPG	STAY	CW	MARB	YG	RE
99	54	45	13	-3.7	61	98	29	12	14	14	0.68	0.12	-0.06
40%	52%	35%	39%	18%	50%	48%	23%	29%	68%	84%	9%	80%	88%
<b>BW</b>							<b>adj. WW</b>						
75							704 (103)						

Synergy Sons are Square made and Moderate Frame. High Marbling Bull.

## 107 1DJS 101K

Cat 1A 100% AR Bull  
1/25/2022

101K 4632487

BROWN SYNERGY X7838  
MNZI SYNERGY M04C  
TCCC GRACIE 2456Z  
BROWN COMPLETE B238  
MISS SCC BROWN COMPLETE 984G  
LSF SRR GILDA C5244

ProS	HB	GM	CED	BW	WW	YW	MILK	HPG	STAY	CW	MARB	YG	RE
90	58	33	14	-3.1	61	96	32	13	14	12	0.53	0.11	0.03
54%	44%	61%	36%	26%	48%	53%	6%	19%	68%	88%	25%	74%	72%
<b>BW</b>							<b>adj. WW</b>						
74							736 (108)						

High Marbling Bull.

## 108 1DJS 105K

Cat 1A 100% AR Bull  
1/18/2022

105K 4632491

BROWN SYNERGY X7838  
MNZI SYNERGY M04C  
TCCC GRACIE 2456Z  
BROWN COMPLETE B238  
MISS SCC BROWN COMPLETE 988G  
LSF SRR RAINBOW C5334

ProS	HB	GM	CED	BW	WW	YW	MILK	HPG	STAY	CW	MARB	YG	RE
80	50	30	13	-2.9	55	87	30	12	14	8	0.59	0.14	-0.18
72%	60%	67%	40%	30%	69%	72%	13%	45%	66%	93%	17%	87%	97%
<b>BW</b>							<b>adj. WW</b>						
79							673 (99)						

Square and Deep. Top 17% Marbling.

## 109 1DJS 111J

Cat 1A 100% AR Bull  
8/25/2021

111J 4632453

BROWN COMPLETE B238  
CRUMP POWDER RIVER 7787  
MDM SUSIE 133-9  
LSF RHO TITONKA Z721  
LSF SRR RAINDANCE Y010 D6361  
LSF RAINDANCE P4002 Y010

ProS	HB	GM	CED	BW	WW	YW	MILK	HPG	STAY	CW	MARB	YG	RE
64	16	48	12	-1.7	71	113	33	10	10	26	0.57	0.03	0.17
89%	97%	29%	64%	53%	15%	17%	2%	68%	96%	41%	19%	29%	40%
<b>BW</b>							<b>adj. WW</b>						
77							695 (106)						

Powder River Son, Good Pedigree, Lots of Power.

## Reference

### MNZI SYNERGY M04C

Cat 1A 100% AR Bull  
2/8/2015

M04C 3718265

BECKTON NEBULA P P707  
BROWN SYNERGY X7838  
C-BAR & BROWN ABIGRACE T714  
RED SIX MILE SAKIC 8325  
TCCC GRACIE 2456Z  
BROWN MS ALPHA ROMEO S6953

ProS	HB	GM	CED	BW	WW	YW	MILK	HPG	STAY	CW	MARB	YG	RE
85	60	25	14	-3.9	55	88	33	12	15	7	0.5	0.15	-0.26
57%	40%	67%	31%	18%	73%	73%	5%	50%	54%	91%	33%	83%	97%

Sire of Lots 92, 93, 105-108. Synergy sires muscular deep sided cattle in a moderate frame. These cattle are born easy, grow good, and move freely.

