



# HBS Greenauz Building Materials Trading LLC

*Integrate your business to a wider network*

CATALOGUE



[www.hbsgreenauz.com](http://www.hbsgreenauz.com)

Location: Dubai - Sharjah

Follow us on    



**HBS Greenauz Building Materials Trading** is a Limited Liability Company located in Dubai & Sharjah mainland to supply building materials to local markets as well as to export in other potential markets.

We are a team of seasoned professionals, specialized in different disciplines and our staffs are all specialized in international trade with rich experience and excellent business capability. We have a long and good experience of working with different manufacturers, suppliers, buyers and importers. We always ensure that all our customers are given first class treatment whenever they deal with us.

As a team we have developed extensive experience within the **cement, cementitious, concrete and other building materials industry in UAE & GCC** and have unique access to a wide range of international resources. Our highest standard of trade process satisfies domestic & international customer's selective demands. Our key members have over 15 years of experience in the cement & building materials industry which has built a strong local & international network.

Together with cement & building materials our aim is to enhance environmental sustainability to enable various industrial by-products, which to be used in replacement of natural raw materials, thus promoting the conservation and renewal of natural resources. **Our core values are:** Working as a trusted partners and offering innovative solutions while promoting the usage of 'green' (eco-friendly) materials, such as **Fly Ash, Slag and Microsilica**. Our aim is to become a key distributor of cement, cementitious and other building materials in the region.

**It is a one stop solution for all your Building Materials need:**

*Just outsource your requirements to us: (&) let us deliver it to you.....*

**ENVIRONMENT :** True to our name we always strive to offer more sustainable products, with a lesser and lesser impact on the environment i.e. to find ways & options as how can we deliver more environment friendly & cost effective solutions as well as to adopt & promote the concept of **Reuse- Reduce- Recycle**





We understand the importance of identifying the right source and origin of the best quality of materials and then to work on the commercial viability of the material

## Our Key Business Strengths

- Experience:** We have a good working experience in this industry & region for last 20 years.
- Strong Business Relations:** We have strong associations with suppliers, customers & other business associates.
- Customer Centric Policies:** These policies have supported us to ensure high trust in our name.
- Adherence to Set Industrial Norms:** We supply products according to industrial standards & ensure their quality assurance.

## Why Buy From Us

- ✓ Providing full range of cement, cementitious & cement based products
  - ✓ Competitive pricing
  - ✓ Consistent Quality
  - ✓ Prompt Response
  - ✓ Timely Delivery
  - ✓ International Network
  - ✓ Cater to any Required Volume
- ✓ Experienced Team
  - ✓ Decades of experience
  - ✓ Easy Accessibility
  - ✓ Great Customer Services
  - ✓ Reliability & Accurate Grade
  - ✓ Proven Customer Satisfaction
  - ✓ On Call Support
  - ✓ Best-in-class Quality products



**Suppliers and Partners:** We have strategic relationships with suppliers & partners around the world to supply materials on FOB or CIF basis. We work with our suppliers & customers as a close business associates located at various places UAE, GCC, India, China, Turkey, Vietnam,, Indonesia, Africa, Middle East, South Asia & South East Asia.



## We Trade in wide range of Building & Construction Materials

HBS Greenauz Building Materials Trading L.L.C with its Head Office in Dubai and Retail Shop & Storage in Sharjah is a one stop solution for all your Building Materials need: Just outsource your requirements to us (&) let us deliver it to you.....

### Key Products Range

White Cement & Gray Cement (OPC, PLC, SRC)

Gypsum Powder/Products/Gypsum Board

Lime Products (Quick lime, Hydrated lime)

Tile Adhesives, Grout, Dry Mix Mortars

Calcium Carbonate

Timber, Plywood, MDF

Powder & Acrylic Wall Putty, Waterproofing

Aluminium Composite Panel

Adhesives & Glues

Hardware & Tools & Safety Products

Sanitary ware & Plumbing Items

Paints & Varnishes

Pipes & Fittings

### Other Products Range

Clinker (Gray & White)

Cementitious (GGBS, Fly Ash, Micro Silica)

Air Filter Bag/Media Bag

Packaging Bags (Paper, PP, Laminated etc)

Dolomite Lumps/Calcined/Powder

Kaolin Cement & Ceramic Grade

Silica Sand, Garnet Sand

Limestone, Aggregate, White Marble Chips

Admixtures & Additives

Iron Ore, Feldspar

Construction Chemicals

Bauxite, Industrial Salt, Mica

Blocks & Interlocks



We supply building materials to local markets as well as to export in other potential markets....



## Logistics-Marketing & Other Support Services

### Logistics Services

We execute all facets of the logistics supply chain to bring the required materials and products quickly and efficiently from source to the user. You can rely on us to get you what you need, when you need it and where you need it.



### Marketing & Support Services

We along with our sister concern also provide specialized strategic advisory and support services such as sourcing and freight, market surveys, environmental assessment, market research and feasibility studies, strategic planning and project management. We are well versed with conducting full market study (such as market mapping of building materials, cement, cementitious, green building, environment & sustainability initiatives). We along with our sister concern also provide advisory & consulting services to clients on market entry, process development, implementation of business plan & strategic partnership development



## Cement & Clinker : GRAY & WHITE

**Cement** is a commonly used substance in construction and acts as a binder that hardens when combined with water to become a paste known as concrete. This material is usually the foundation of construction projects and is one of the most-consumed resources on the planet. Good cement manifests itself as an excellent building material and this is determined through properties such as the fineness of the cement, the duration it takes to harden, the strength of the material, and its ability to retain its shape upon hardening.

HBS Greenauz through its vast experience and extensive network in the Cement industry, delivers wide variety and quality of Cement like **OPC, PLC, SRC, MC, Blended Cements and White Cement & Clinker**. Our experience and reliability in the cement supply business are well accepted among users and we have strategic relationships with suppliers to supply cement on demand. **We source cement from first class producers and we distribute cement both in bag & bulk.**

**Clinker** is the main ingredient used in the manufacture of Portland cement. HBS Greenauz through its strategic business location and approach is able to supply clinker on CIF basis to various destinations.

Clinker is formed in lumps or nodules, usually 3-25mm in diameter, by sintering limestone and alumina-silicate (clay) during the cement kiln stage. Clinker is ground in a mill, usually with gypsum, to produce Portland cement. It can also be ground with slag, pozzolan, and silica to produce special types of cement. Under dry conditions, clinker can be stored for several months without significant loss of quality.

**Available Packaging Mix 40 & 50 Kg in PP & Paper Bag, Jumbo Bag Packaging range from 0.5-1.5 metric ton in PP bag & Bulk Cement**

**Our global footprint & years of working within cement industries allowed us to gain an in-depth understanding of our customers' need**





## Cementitious: FLY ASH

**Fly Ash** is a by product of coal based thermal power station generated by the combustion of pulverized coal. Fly Ash is a fine, grey amorphous powder, rich in silica & alumina and spherical in shape. The properties of Fly Ash may vary widely, both physically and chemically, depending upon the nature of coal, the efficiency of coal combustion process and the selection process. It is a fine residue resulting from the burning of powdered coal at high temperatures. The main content of Fly Ash is Silica. **There are 2 types of Fly Ash Class F & Class C.** The difference is based on the sum of Silicon Dioxide ( $\text{SiO}_2$ ) + Aluminium Oxide ( $\text{Al}_2\text{O}_3$ ), if the sum of this is greater than/equal to 70% it is called Class F and if the % is greater than/equal to 50% it's Class C Fly Ash. Class "F" Fly Ash makes concrete better. Normally used as a cement replacement, particularly suited for mass concrete applications and suitable with concrete in hot weather climates.

### Technical benefits on concrete

Improves workability, Improves pumpability, Extends setting time, Decreases bleeding, Reduces heat of hydration, Increase long term strength, Improved durability, Decrease permeability, Reduces alkali aggregate expansion, Reduces Shrinkage, Improves Sulphate & Chloride Resistance, Lower water requirement than Ordinary Portland Cement (OPC), Better concrete cohesion

**Applications of Fly Ash:** Ready Mix Concrete, Asbestos Products Manufacturing, Cement Manufacturing, Bricks & Blocks Manufacturing, Builders & Contractors, Precast Manufacturing, Plaster & Masonry Works, Land Fill & many more

**Masonry Application Advantages:** Reduces drying shrinkage cracks, Good bonding, less rebound hence minimized wastage during plastering, Better coverage area in plaster, Excellent permeability resistance, Smooth Finish, Eco Friendly, Cost Effective

**Available Packaging:** Bulk and Jumbo Bags



Build It Green with Fly Ash



## Cementitious: GGBS

**Ground Granulated Blast Furnace Slag (GGBFS)** is obtained by quenching molten iron slag (a by-product of iron and steel-making) into water from a blast furnace to produce a glassy, granular product.. Granulated blast-furnace slag is dried and ground into a fine powder that is reactive and when used as cementitious material, forms Calcium and Aluminium silicate hydrate. The main components of blast furnace slag are  $\text{CaO}$  (30-50%),  $\text{SiO}_2$  (28-38%),  $\text{Al}_2\text{O}_3$  (8-24%), and  $\text{MgO}$  (1-18%).

GGBS replaces a substantial proportion of normal cement OPC in RMC. The mixing varies from 30% to 70%. The higher the proportion, the better is durability for concrete. GGBS is also used in other forms of concrete including site batched and precast. Replacement of OPC with GGBS increases the durability and workability without affecting strength. Thus finally it is cost effective solution in current competitive market.

Concrete containing ground granulated slag develops strength over a longer period, leading to reduced permeability and better durability and strength. GGBS enhanced environmental performance lower carbon emissions, lower maintenance costs, increased life cycle increased sulfate resistance, increased alkali silica reaction resistance.

**Among the measurable improvements are:** Better concrete workability, Easier finishability, Higher compressive and flexural strengths, Lower permeability, Improved resistance to aggressive chemicals, Very low heat of hydration, Improved surface finish, Lighter and more even color, Use of GGBS extends the life cycle of concrete structures and is known for low carbon footprint

**Available Packaging:** Bulk and Jumbo Bags



**Sustainable Development with GGBS**





## Cementitious: MICROSILICA

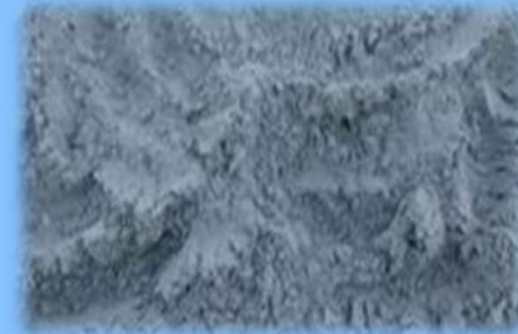
**Micro silica** is also known as silica. It is a by product of the industrial manufacture of ferrosilicon and metallic silicon in high-temperature electric arc furnaces. Silica fume is an ultra-fine pozzolan, its particles are less than 1 micron (0.00004 inches) in diameter, usually 50 to 100 times thinner than average cement or fly ash particles.

The ferrosilicon or silicon product is extracted as a liquid from the bottom of the furnace. The steam that rises from the furnace bed at 2000 degrees C is oxidized and, as it cools, it condenses and becomes particles trapped in huge cloth bags. The processing of condensed smoke to remove impurities and control particle size produces micro-silica.

Added to concrete at around 30kg / m<sup>3</sup>, the rheology changes and reacts with cement hydration products to dramatically improve concrete strengths, durability and impermeability, it gives higher compressive strength by 10-20%, lower heat of hydration, lower free lime formation, improved workability, reduced water bleeding and segregation of the cement are added benefits of Micro Silica.

Silica fume also blocks the pores in the fresh concrete so water within the concrete is not allowed to come to the surface.

**Available Packaging:** Bulk, Bulk bags, 20KG, 25KG, 50KG, Customized



Embedding sustainable thinking into everything we do : We promote usage of eco-friendly materials such as Micro silica -industry by-products.



## DOLOMITE

**Dolomite** is a sedimentary carbonate rock, It is a calcium magnesium carbonate with a chemical composition of  $(CaMg CO_3)_2$  which is ground to make chips and powder products of various sizes. It occurs from white to off-white in colour. It has better compressive strength and weather resistance compared to Calcium Carbonate.

Dolomite has a number of uses, the most important of, which is as granular as well as fine filler for cementitious and concrete products, where it may be used as a substitute for limestone. The Dolomite offered by us is super white in colour with no or very less presence of foreign particles. It has a shine to it which is reflected in the finished product. The most common use for dolostone is in the construction industry. It is crushed and sized for use as a road base material, an aggregate in concrete and asphalt, it is also calcined in the production of cement.

Dolomite is used as a source of magnesia (MgO), a feed additive for livestock, a sintering agent and flux in metal processing, and as an ingredient in the production of glass, bricks, and ceramics. **Agriculture grade dolomite** used for soil neutralization/conditioner to correct acidity. It also finds **use** as filler in fertilizers. Dolomite has a number of other uses including and not limited to: iron & steel making, environmental applications, wastewater treatment, heat refractories, production of magnesium . Available Size: as per need

### Fineness:

**Coarse:-** Powder 80-100, 200, 250

**Micro fine :-** 300-500

**Micronized:-** 2 Micron, 10 Micron, 15 Micron, 20 Micron

**Available Packaging:** 25KG, 50KG, 1000KG (customized packing)





## Lime Products: QUICK LIME- HYDRATED LIME

**Limestone** is a sedimentary rock composed largely of the minerals calcite and aragonite which are different crystal forms of calcium carbonate ( $\text{CaCO}_3$ ). It is the raw material for the manufacture of quicklime (calcium oxide), slaked lime (calcium hydroxide), cement and mortar. The widespread use of limestone can be attributed to its physical properties and its suitability in construction use. Its hard and dense structure coupled with minimum pore spaces makes it a great utilitarian material with a varied range of applications. The broad category of lime is non-hydraulic and hydraulic lime.

The non-hydraulic lime is called as quick lime or white lime or as lump lime. Quick Lime is a form of lime is manufactured by the burning of stone that has calcium carbonate within it; this process is called as calcinations. The solid product that remains after the removal of carbon dioxide in the calcium carbonate is called as the quicklime:  $\text{CaCO}_3$  (Calcium carbonate)  $\rightarrow$   $\text{CaO}$  (Calcium Oxide - Quick Lime) +  $\text{CO}_2$

Quicklime has a wide range of application such as cement manufacturing, light weight block, Petroleum industries, Paper industries, etc. The quick lime with water is hydrated lime  $\text{Ca}(\text{OH})_2$ , a fine dry white powder, which is called as calcium hydroxide or slake lime. The white powdered slaked lime has a wide range of applications in construction. The properties of lime are: **Cementing capability, Higher acid resistance, Pozzolanic activity, Sealing of micro cracks, Masonry construction, and for Finishing works.** Hydrated Lime is used in water as well as sewage treatment, development of ammonia gas, food industry, sugar industry, soft drink, paper industry, in improving the quality of the soil and is used as a component in lubricants and additives, bleaching powder, glass, leather, paint, fertiliser, wall putty etc.

Our company is one of the prime suppliers of Lime Products that are best known in market due to its precise composition, excellent purity and long shelf life.

**Available Packaging:** Small packs and is also available for loose supply in jumbo bags and bulker as per the needs.





## GYPSUM POWDER

**Gypsum** is a soft sulfate mineral composed of calcium sulfate dihydrate, with the chemical formula  $\text{CaSO}_4 \cdot 2\text{H}_2\text{O}$ . To process Gypsum, it is grounded into a fine powder and boiled down to remove any moisture. When water is added to the powder, it will harden and form a mould, making it an excellent binding agent.

**White Gypsum Powder:** Free from odor, It is naturally present in limestone, saline lake, and sedimentary rock located in dry atmospheric regions. Solid white gypsum powder is hygroscopic by nature. This powder-based chemical is used to manufacture gypsum board, paint, and gypsum block.

It has a wide variety of uses – primarily for plaster/wallboard and cement production, plaster of Paris, but also as a soil conditioner and fertilizer, in surgical splints/casting models and in impression plasters in dentistry, In agriculture, it is used to improve fertility of land, Utilized as one of the main raw materials for artwork., As construction material, it is used to produce compound powder for drywall joint and gypsum board., In health care arena, it is used to develop dental accessories and POP bandage.

**Product Advantages:** High compressive strength, more fineness & shining, high fluidity & workability, suitable setting time, It can be used at interior and exterior decoration works as single coat, also used in moulds.

**Available Packaging:** Loose & 25Kgs, 30Kgs and 50 kgs Bags, Shipping In bulk vessel & Container





## TILE ADHESIVES-GROUT-DRYMIX MORTAR

**Tile Adhesive** is a dry premixed thin bed adhesive mortar for fixing the ceramic tiles on wall and floor in interiors under normal conditions. It's available as a general purpose adhesives, cement-based premium-quality tile adhesive, water resistant tile adhesive. It is for higher flexibility and durability. Its unique blend of composition gives robust performance with very high adhesive strength for many varieties of Ceramic, Vitrified, Mosaic, Glazed tiles, Porcelain, Marble and Granite Tiles. **Key Features:** General purpose use, Quality consistency, Excellent workability, Outstanding bonding tendency, High adhesive bonding strength, Eco friendly Nature, Easy & ready to use-just add water, Water resistant nature, Suitable for varieties of tiles, Long storage life etc.

**Tile Grout Gray** is a Cement based dry premixed, general purpose high strength free flowing grout is suitable for the fixing of all types of tiles and decorative stone claddings. **Tile Grout White** Provides superior hardness, strength and durability with a wide variety of tiles. Used for grouting glazed wall tile, marble or granite. It is excellent for bonding, even in damp conditions

**Mortar** is suitable for a wide range of concrete and masonry repair work especially in vertical and overhead applications because it is shrinkage compensating, high strength reinforced mortar with excellent bonding properties.

**Key Features** · Requires only the addition of water before use · Saves in time and labour · Self compacting mortar · Excellent workability..

**Aerated Thin Block Laying Mortar** is a cementitious thin layer masonry mortar. Suitable for internal and external applications, thin layer mortar for joining AAC blocks, pre fabricated walls and is suitable for joint thickness of less than 1mm. **Key Features:** Excellent workability · High Adhesive properties · Optimum mechanical properties · High water retention · Shrinkage resistant · Mixed by hand or electrical mixer, Excellent adhesion and workability · Long open time and working time · Good mechanical properties · More yield and coverage

**Block Laying Mortar** is a pre-mixed mortar for laying / fixing of concrete block, clay brick and other similar masonry units. **Key Features:** Excellent workability · High moisture retention · Screw mixer for continuous mixing · Mixed by hand or electrical mixer · Uniform consistency · Compatible to concrete block masonry · Low shrinkage



**Available Packaging:** White & Grey packed in 10 kg, 20 kg , 25Kg 40Kg, 50Kg



## CALCIUM CARBONATE

## ADMIXTURES

**Ground Calcium Carbonate**, also known as Calcite Powder is an exceptional mineral due to its wide scope of application in various industries. We offer high quality calcium carbonate powder which has a high percentage of Calcium Carbonate ( $\text{CaCO}_3$ ). It has high brightness, whiteness and controlled particle size to ensure high dispersion & opacity in the final products. Calcium Carbonate is the most common mineral used as filler that has vast application scope in various industries like Paints, coatings, inks / PVC extrusions - Plasticized & rigid PVC, unsaturated polyesters, polypropylene & polyethylene / Adhesives, Paper, Bitumen, caulks, sealants / Rubber - flooring products, Animal & Poultry feed as a calcium source, Construction Chemicals, Foamed latex carpet-backings / GRC, Adhesives & sealants etc. It is a valued raw materials and process enablers for the steel industry, sugar industry, water treatment and the building industry. We are one of the premium providers of ground calcium carbonate powder. Our calcium carbonates are cost-effective multifunctional fillers that improve whiteness, opacity and matting. We can meet every industry's requirements and even deliver custom grades as according to requirements. **Fineness:** Coarse, Microfine and Customised  
**Available Packaging:** 25KG, 30KG, Jumbo Bags and Customised Packing

**Admixture** We provide all range of admixture tailor-made as per customer request. Key Features: Providing good quality, consistent products at reasonable cost.

**Advantages:** Water Reducing and Retarding Admixture, Increased workability, Reduces placing time, labour and equipment. High strength concrete: Water reduction gives higher strengths without cement increase or workability loss. Workability Retention, Reduced permeability, Better Surface finish, Improved pumpability, Chloride free, Compatible with sulfate resisting and other Portland cements and high alumina cements. Durability

**Available Packaging:** supplied in 210 litres drums and in bulk





## AIR FILTER BAG-MEDIA BAG

**Emissions control** is a hot topic in the cement industry. Cement plants need to adhere to emission standards for hazardous air pollutants regulations hence to comply with strict measures for emissions control.

We are leading supplier of air filtration such as PTFE membrane filter, HEPA filter media, **Filter Bags** and a variety of other high grade PTFE products. Our Filter Bags are reliable and continuous compliance with membrane-based filter technology proven to increase airflow and productivity. This is why cement producers trust our Filter Bags.

Once installed, our bags remain reliable, providing unconstrained operations while keeping plants comfortably and continuously compliant. In addition this includes our technical support for the lifetime of the filter bags, it is defined by: extremely high filtration efficiency, very low resistance to flow and extremely long filter life.

These qualities make our filter bags highly durable and reliable through each cleaning cycle, resulting in a long product life overall, equalling lowered maintenance costs, increased yield and greater productivity. Cement producers can benefit in multiple ways: Reduce fan energy costs, Increase O<sub>2</sub> availability in kiln, Potentially increase use of alternative fuel, Reliably meet emissions regulations, Lowering total cost of ownership

**The basic information we need to choose the right material for you:** filter bag size, current material and quantity, bag house operating parameters (e.g.: airflow rate, temperature, differential pressure), particulate description (ideally including concentration, particle size, bulk density), cleaning cycle parameters (e.g.: pulse jet pressure, cycle time).





## PACKAGING BAGS

We offer **complete packaging solutions** for the building and construction industry. We supply multiwall, pasted valve paper sacks catering to the needs of Cement, Premix, Fertilizer, Chemical, Flour and Mineral industries. We provide advanced packaging solution such as PP woven packaging bags, multicolour printed BOPP woven bag, high end flexo printed woven bags used for Cement, Gypsum, Lime, Sugar, Fertilizer, Agriculture, Construction etc.

We supply **block bottom bag** also known as **AD\* star bag**. Block bottom bags become brick shape which helps in higher stacking, easy transportation and higher strength; it has option of top valve for automatic filling with self closure or with open mouth for non automated plants. Ad\* Star Sacks are usually used for powdered materials such as cement and minerals. These sacks are very cost-effective method for high strength packaging and the flat bottom makes storage easy while offering a good billboard for company information when the sacks are on display in the stores.

**Jumbo Sacks**, also known as FIBC Sacks (Flexible Intermediate Bulk Container) are one of the most cost effective and ideal for shipping and storing dry bulk products. We have FIBC or Big/Jumbo Bags (various capacities and customized as per customers requirements). They are produced from either tubular or flat polypropylene (PP) woven fabrics depending on the requirements of the Safe Working Load (SWL).

**Sandwich (PP Laminated) Sacks** are woven polypropylene with an inner layer of paper. The sacks is micro-perforated to allow for high-speed filling. These sacks have the advantages of both paper and Ad\*Star where the paper improves shelf life and Polypropylene gives the strength. This is the preferred solution for high humidity areas for cement for better protection during long distance transportation and storage.

We supply sacks from 2 to 4 plies with up to 6-8 color printing as per customer's design and variety of bag sizes that meet all customer needs.





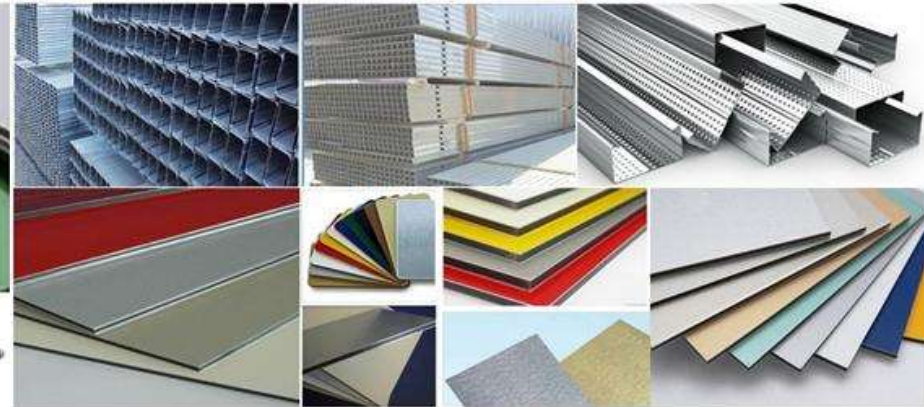


## OTHER BUILDING & CONSTRUCTION MATERIALS WE DEAL IN

### Paints & Varnishes



### Aluminium Composite Panel



### Pipes & Fittings

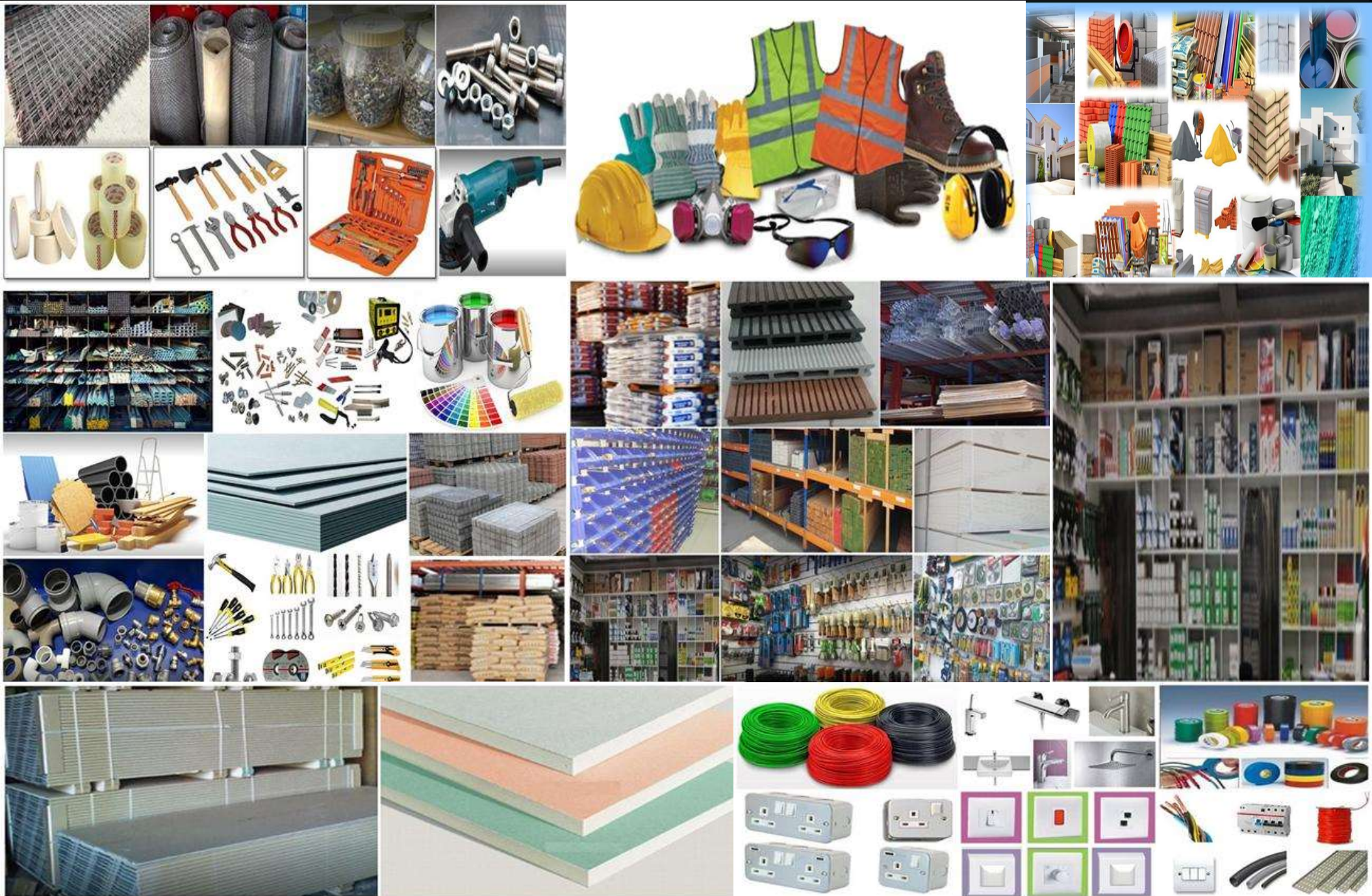


### Timber & Plywood



*We also deal in wide range of other building & construction materials such as Paints, Pipes & Fittings, Sanitary ware, Building Hardware, Timber & Wood Products etc. All our products are most trusted due to its consistent high quality.*

# AND MIX RANGE OF OTHER BUILDING & CONSTRUCTION MATERIALS (Hardware-Tools-Plumbing-Gypsum Board Etc)



**Strategic Partnership:** We are open to speak about strategic partnership with companies & individuals, which should be mutually beneficial to both parties entering the partnership.



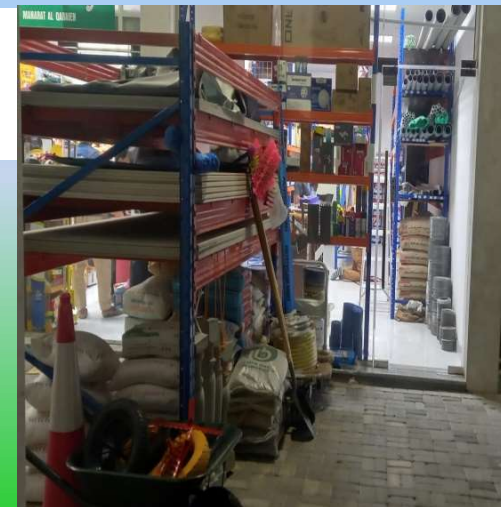
Lets get familiar with us & explore the areas of common ground & mutual collaboration

**HBS Greenauz Building Materials Trading LLC**  
Near Al Twar Centre, Al Qusais, Dubai, UAE  
PO Box: [624379](mailto:624379), Dubai, Call: [+971 4 2217745](tel:+97142217745)

**HBS Greenauz Building Materials Trading LLC**  
**Shop No. 5**, Plot 232, **Hoshi Area**, Maliha Road  
Sharjah, UAE, Mobile: [+971 50 4287792](tel:+971504287792)

Email: [info@hbsgreenauz.com](mailto:info@hbsgreenauz.com) ,, [hbs.gbmt@gmail.com](mailto:hbs.gbmt@gmail.com)

Web : [www.hbsgreenauz.com](http://www.hbsgreenauz.com)



[www.hbsgreenauz.com](http://www.hbsgreenauz.com)

Follow us on    