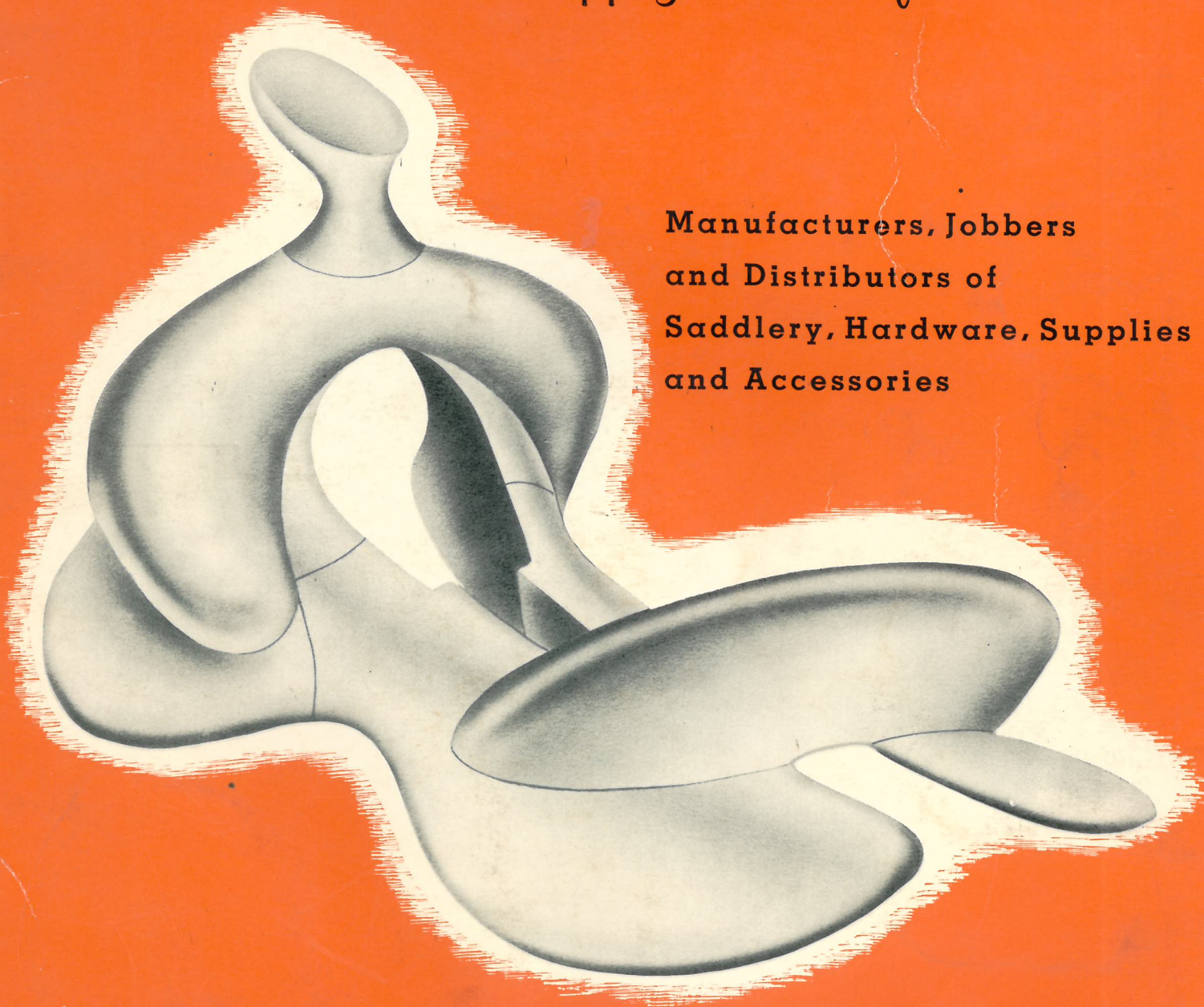


# ***RUWART***

***Manufacturing Company***

*The Saddle Makers Supply House of the West*



**Manufacturers, Jobbers  
and Distributors of  
Saddlery, Hardware, Supplies  
and Accessories**

**49th at Washington, Denver 16, Colorado**



**THIS IS THE ONLY CATALOGUE  
AVAILABLE AT PRESENT. You are on  
our mailing list for our new  
catalogue.**

## **TO OUR CUSTOMERS**

We are pleased to present this Supplement to our May, 1958 General Catalogue. In this catalogue Supplement we are presenting our new line of Saddle Trees and our line of Fine Mohair Cinchas which we now make with Tie Down Dees if desired. Also included are our complete line of galvanized bound stirrups and the Ruwart Flush Stirrup Fastener which may be installed in any of our stirrups. We are presenting some new Blankets by the makers of the famous Karakul, also our most widely known Cutting Horse bit, now in stainless steel.

The new trees which we show in this catalogue are made in large quantities and by this method we are able to reduce the price considerably. We carry a complete stock of these trees and will be able to make immediate delivery of the sizes as listed in the following pages. If you wish these trees altered in any manner, we will be forced to make them in our regular custom tree department and will have to charge the same as for a Custom Tree, and also there will be a delay of at least two weeks for delivery.

### **TREES**

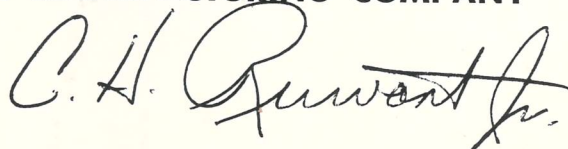
We have tried to arrange some method to have trees on hand so that in rush periods some of these may be suitable to you and your customer.

These trees are in every way as fine a product as the Ruwart Company has manufactured for the past 47 years. They carry our unconditional 5 year guarantee, as on our Custom Trees.

This catalogue carries the same discount and terms as our May, 1958 General Catalogue.

We thank all our many customers for their loyal patronage that we have been favored with in past years, and we hope to continue to serve you with better products in the years to come.

### **THE RUWART MANUFACTURING COMPANY**



By \_\_\_\_\_

C. H. Ruwart, Jr., President

# Another First by Ruwart... Cinchas with Woven In Dees

For Flank Cinch and Breast Collar Tie Downs. A sure leader for all "up to date" Saddlery Suppliers.

**NO INCREASE IN PRICE**

## Saddlery Supplies - Cinchas or Girths



### SINGLE BAR MOHAIR CINCH

*With Two Dees in Center*

	Cadmium Rings	Solid Brass Rings
No. 113-D, 13 Strand-#0-3"	\$3.30	\$4.82
No. 115-D, 15 Strand-#0-3"	3.63	5.14
No. 117-D, 17 Strand-#0-3½"	4.00	5.80
No. 119-D, 19 Strand-#0-3½"	4.20	6.14
No. 121-D, 21 Strand-#0-3½"	4.66	6.46

### TWO BAR MOHAIR CINCH

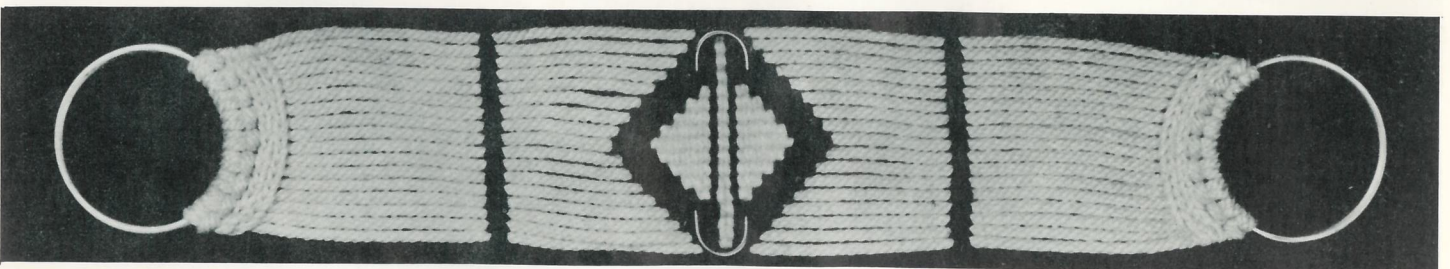
*With Two Dees in Center*

No. 213-D, 13 Strand-#0-3"	\$3.52	\$5.04
No. 215-D, 15 Strand-#0-3"	3.84	5.36
No. 217-D, 17 Strand-#0-3½"	4.22	6.02
No. 219-D, 19 Strand-#0-3½"	4.54	6.36
No. 221-D, 21 Strand-#0-3½"	4.80	6.68

### THREE BAR MOHAIR CINCH

*With Two Dees in Center*

No. 315-D, 15 Strand-#0-3"	\$4.06	\$5.58
No. 317-D, 17 Strand-#0-3½"	4.44	6.24
No. 319-D, 19 Strand-#0-3½"	4.76	6.58
No. 321-D, 21 Strand-#0-3½"	5.10	6.90



### DIAMOND CENTER MOHAIR CINCH

*With Two Dees in Center*

	Cadmium Rings	Solid Brass Rings
No. 415-D, 15 Strand-#0-3"	\$4.94	\$6.46
No. 417-D, 17 Strand-#0-3½"	5.32	7.12
No. 419-D, 19 Strand-#0-3½"	5.64	7.46
No. 421-D, 21 Strand-#0-3½"	5.90	7.78

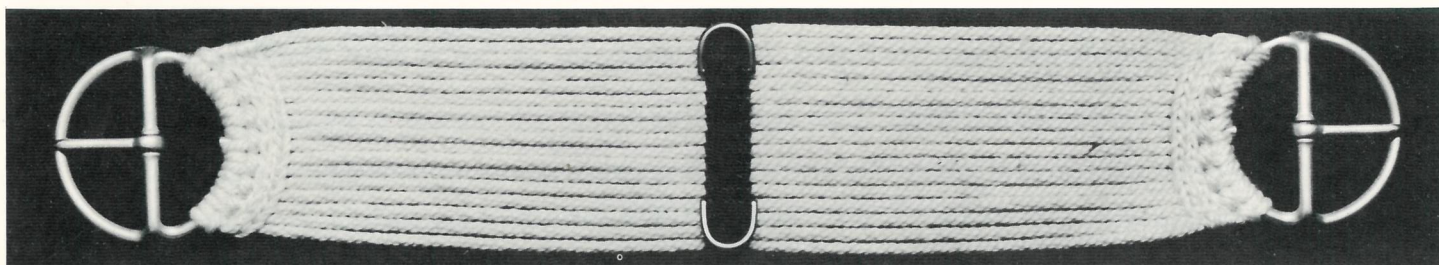
### DOUBLE DIAMOND MOHAIR CINCH

*With Two Dees in Center*

No. 517-D, 17 Strand-#0-3½"	\$6.20	\$8.00
No. 519-D, 19 Strand-#0-3½"	6.52	8.34
No. 521-D, 21 Strand-#0-3½"	6.86	8.66



## Saddlery Supplies—Cinchas or Girths



### SINGLE BAR MOHAIR CINCH

*With Two Dees in Center*

	No. 902 Buckles Cadmium	No. 902 Buckles Solid Brass	No. 302 Buckles Solid Brass
No. 613—D, 13 Strand—#3"	\$4.70	\$5.52	\$5.70
No. 615—D, 15 Strand—#3"	4.84	5.84	6.02
No. 617—D, 17 Strand—#3½"	5.40	6.86	7.04
No. 619—D, 19 Strand—#3½"	5.74	7.18	7.20
No. 621—D, 21 Strand—#3½"	6.06	7.32	7.70

### TWO BAR MOHAIR CINCH

*With Two Dees in Center*

No. 713—D, 13 Strand—#3"	\$4.86	\$5.74	\$5.92
No. 715—D, 15 Strand—#3"	5.06	6.06	6.24
No. 717—D, 17 Strand—#3½"	5.62	7.08	6.86
No. 719—D, 19 Strand—#3½"	5.96	7.40	7.58
No. 721—D, 21 Strand—#3½"	6.28	7.74	7.92

### THREE BAR MOHAIR CINCH

*With Two Dees in Center*

No. 815—D, 15 Strand—#3"	\$5.28	\$6.28	\$6.46
No. 817—D, 17 Strand—#3½"	5.84	6.90	7.48
No. 819—D, 19 Strand—#3½"	6.18	7.62	7.80
No. 821—D, 21 Strand—#3½"	6.50	7.96	8.14



### DIAMOND CENTER MOHAIR CINCH

*With Two Dees in Center*

	No. 902 Buckles Cadmium	No. 902 Buckles Solid Brass	No. 302 Buckles Solid Brass
No. 915—D, 15 Strand—#3"	\$6.16	\$7.16	\$7.34
No. 917—D, 17 Strand—#3½"	6.72	8.18	8.36
No. 919—D, 19 Strand—#3½"	7.06	8.50	8.68
No. 921—D, 21 Strand—#3½"	7.38	8.84	9.02



### DOUBLE DIAMOND MOHAIR CINCH

*With Two Dees in Center*

	No. 902 Buckles Cadmium	No. 902 Buckles Solid Brass
No. 1015—D, 15 Strand—#3"	\$7.04	\$8.04
No. 1017—D, 17 Strand—#3½"	7.60	9.06
No. 1019—D, 19 Strand—#3½"	7.94	9.38
No. 1021—D, 21 Strand—#3½"	8.26	9.72

### DOUBLE DIAMOND MOHAIR CINCH

*With Two Dees in Center  
3½" Solid Bronze*

	No. 302 Buckles Solid Brass
No. 1115—D, 15 Strand—#3"	\$8.22
No. 1117—D, 17 Strand—#3½"	9.24
No. 1119—D, 19 Strand—#3½"	9.56
No. 1121—D, 21 Strand—#3½"	9.90



# Saddlery Supplies—Cinchas or Girths

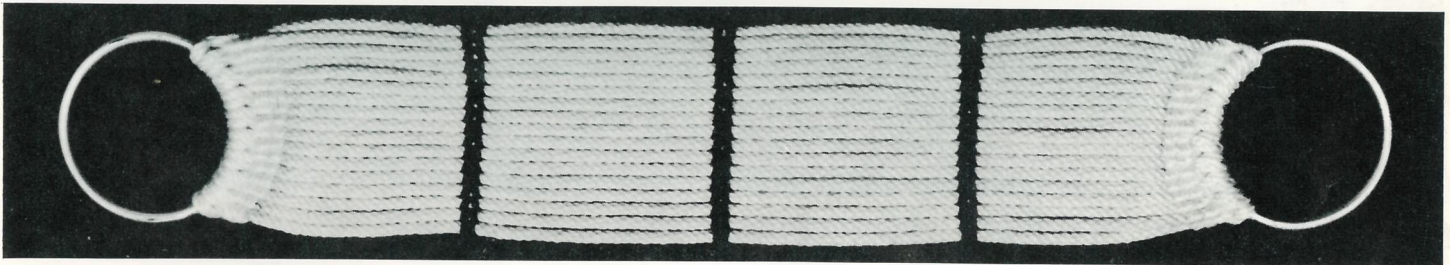


## SINGLE BAR MOHAIR CINCH

		Cadmium Rings	Solid Brass Rings
No. 113—, 13 Strand—#0-3"		\$3.30	\$4.82
No. 115—, 15 Strand—#0-3"		3.63	5.14
No. 117—, 17 Strand—#0-3½"		4.00	5.80
No. 119—, 19 Strand—#0-3½"		4.20	6.14
No. 121—, 21 Strand—#0-3½"		4.66	6.46

## TWO BAR MOHAIR CINCH

No. 213—, 13 Strand—#0-3"	\$3.52	\$5.04
No. 215—, 15 Strand—#0-3"	3.84	5.36
No. 217—, 17 Strand—#0-3½"	4.22	6.02
No. 219—, 19 Strand—#0-3½"	4.54	6.36
No. 221—, 21 Strand—#0-3½"	4.80	6.68



## THREE BAR MOHAIR CINCH

	Cadmium Rings	Solid Brass Rings
No. 315—, 15 Strand—#0-3"	\$4.06	\$5.58
No. 317—, 17 Strand—#0-3½"	4.44	6.24
No. 319—, 19 Strand—#0-3½"	4.76	6.58
No. 321—, 21 Strand—#0-3½"	5.10	6.90



## DIAMOND CENTER MOHAIR CINCH

	Cadmium Rings	Solid Brass Rings
No. 415—, 15 Strand—#0-3"	\$4.94	\$6.46
No. 417—, 17 Strand—#0-3½"	5.32	7.12
No. 419—, 19 Strand—#0-3½"	5.64	7.46
No. 421—, 21 Strand—#0-3½"	5.90	7.78

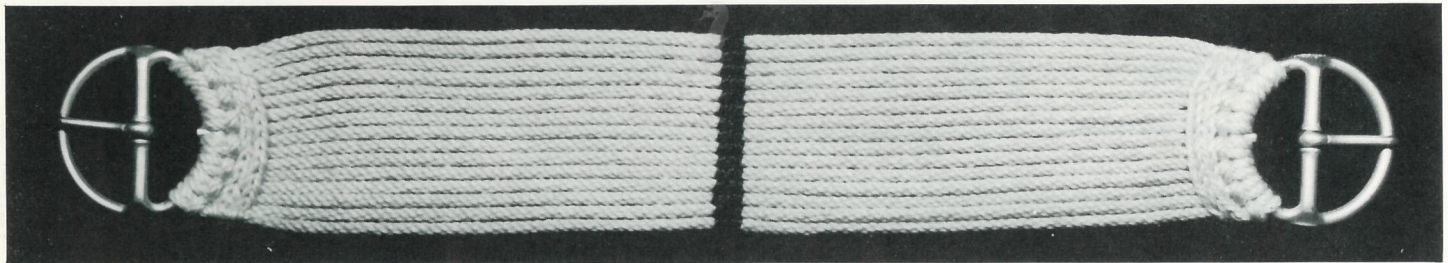


## Saddlery Supplies—Cinchas or Girths



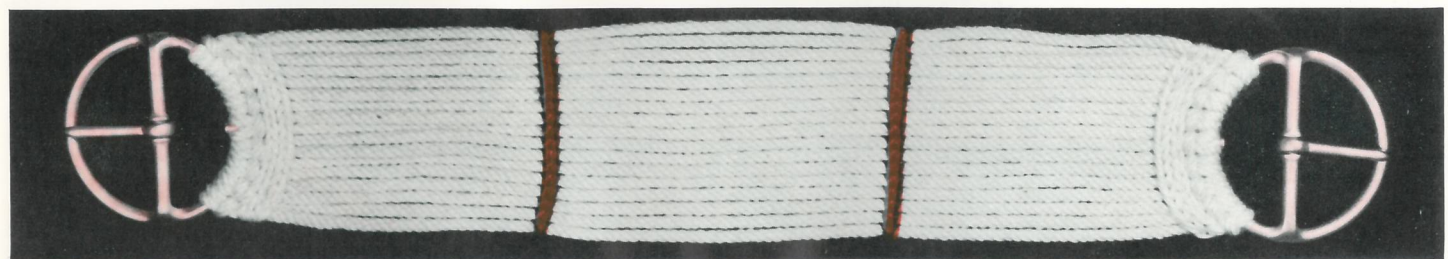
### DOUBLE DIAMOND MOHAIR CINCH

	Cadmium Rings	Solid Brass Rings
No. 517—, 17 Strand—#0-3½"	\$6.20	\$8.00
No. 519—, 19 Strand—#0-3½"	6.52	8.34
No. 521—, 21 Strand—#0-3½"	6.86	8.66



### SINGLE BAR MOHAIR CINCH

	No. 902 Buckles Cadmium	No. 902 Buckles Solid Brass	No. 302 Buckles Solid Brass
No. 613—, 13 Strand—#3"	\$4.70	\$5.52	\$5.70
No. 615—, 15 Strand—#3"	4.84	5.84	6.02
No. 617—, 17 Strand—#3½"	5.40	6.86	7.04
No. 619—, 19 Strand—#3½"	5.74	7.18	7.20
No. 621—, 21 Strand—#3½"	6.06	7.32	7.70



### TWO BAR MOHAIR CINCH

	No. 902 Buckles Cadmium	No. 902 Buckles Solid Brass	No. 302 Buckles Solid Brass
No. 713—, 13 Strand—#3"	\$4.86	\$5.74	\$5.92
No. 715—, 15 Strand—#3"	5.06	6.06	6.24
No. 717—, 17 Strand—#3½"	5.62	7.08	6.86
No. 719—, 19 Strand—#3½"	5.96	7.40	7.58
No. 721—, 21 Strand—#3½"	6.28	7.74	7.92

### THREE BAR MOHAIR CINCH

	No. 902 Buckles Cadmium	No. 902 Buckles Solid Brass	No. 302 Buckles Solid Brass
No. 815—, 15 Strand—#3"	\$5.28	\$6.28	\$6.46
No. 817—, 17 Strand—#3½"	5.84	6.90	7.48
No. 819—, 19 Strand—#3½"	6.18	7.62	7.80
No. 821—, 21 Strand—#3½"	6.50	7.96	8.14



## Saddlery Supplies – Cinchas or Girths



### DIAMOND CENTER MOHAIR CINCH

	No. 902 Buckles Cadmium	No. 902 Buckles Solid Brass	No. 302 Buckles Solid Brass
No. 915—, 15 Strand—#3".....	\$6.16	\$7.16	\$7.34
No. 917—, 17 Strand—#3½".....	6.72	8.18	8.36
No. 919—, 19 Strand—#3½".....	7.06	8.50	8.68
No. 921—, 21 Strand—#3½".....	7.38	8.84	9.02



### DOUBLE DIAMOND MOHAIR CINCH

	No. 902 Buckles Cadmium	No. 902 Solid Brass Buckles
No. 1015—, 15 Strand—#3".....	\$7.04	\$8.04
No. 1017—, 17 Strand—#3½".....	7.60	9.06
No. 1019—, 19 Strand—#3½".....	7.94	9.38
No. 1021—, 21 Strand—#3½".....	8.26	9.72



### DOUBLE DIAMOND MOHAIR CINCH

	No. 302 Buckles Solid Brass
No. 1115—, 15 Strand—#3".....	\$8.22
No. 1117—, 17 Strand—#3½".....	9.24
No. 1119—, 19 Strand—#3½".....	9.56
No. 1121—, 21 Strand—#3½".....	9.90



## Colorado Roper

### **TREE No. 22**

**NAME:** Colorado Roper

**SEAT:** 14"

**FORK:** 12½"

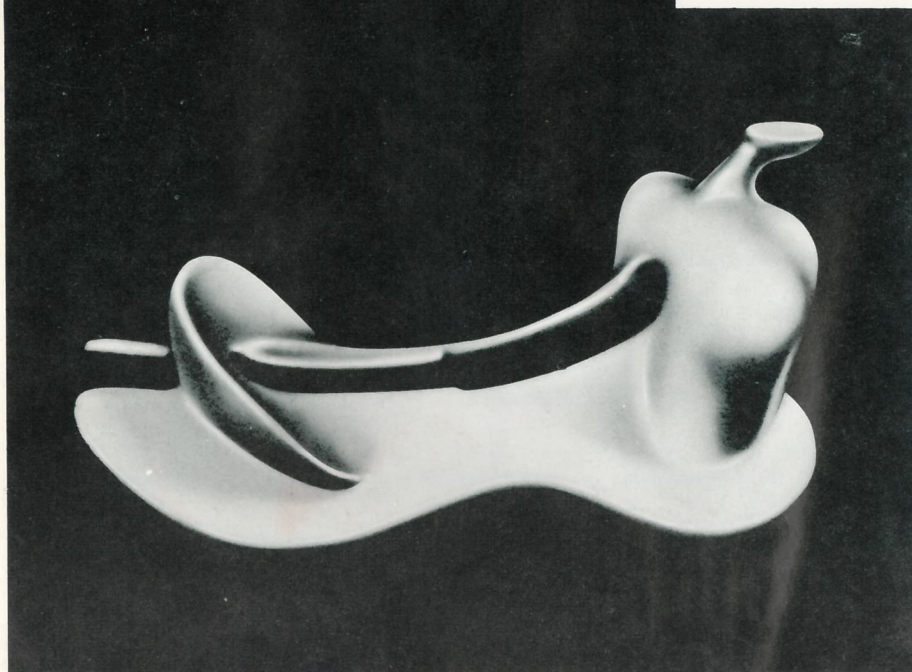
**HORN:** F-10—2¼" Head—Flat Top

**CANTLE:** 2½"

**GULLETT:** 6"

**COVER:** Bull

**PRICE:** \$36.00 each



*This tree in stock  
for immediate delivery,  
in sizes listed only,  
at this price.*



## Light Weight Bowman

### TREE No. 2104

*6" gullet*

**NAME:** Light Weight Bowman  
**SEAT:** 15" and 14"  
**FORK:** 12"  
**HORN:** F-10—3" Head—Flat Top  
**CANTLE:** 2½"  
**GULLETT:** 5¾"  
**COVER:** Bull  
**PRICE:** \$36.00 each

### TREE No. 3104

**NAME:** Light Weight Bowman  
**SEAT:** 15" and 14"  
**FORK:** 12"  
**HORN:** #8 Mex. 3" Head  
**CANTLE:** 2½" Komfort Kantle  
**GULLETT:** 5¾"  
**COVER:** Bull  
**PRICE:** \$36.00 each

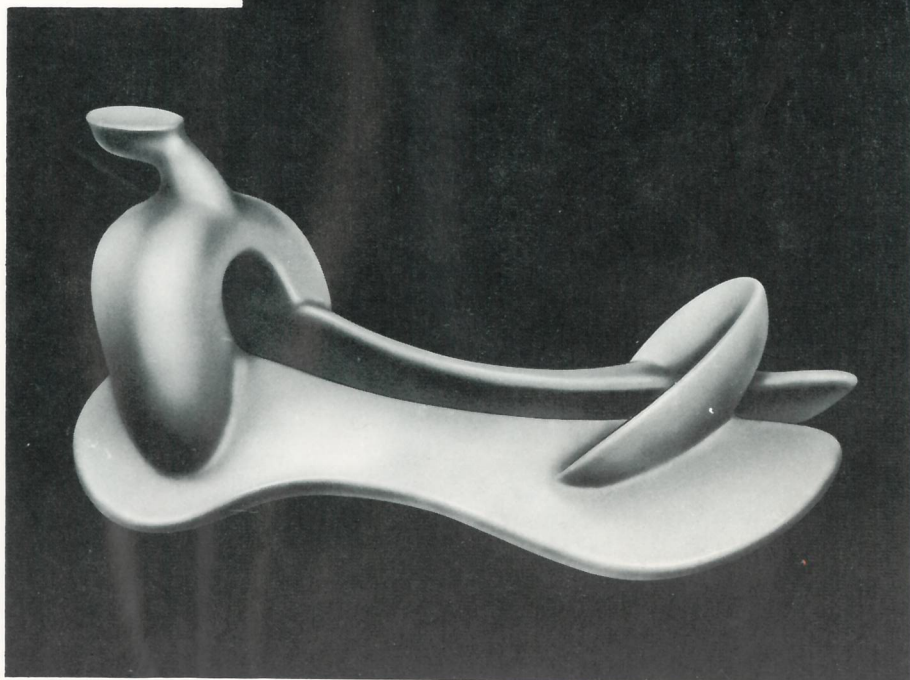
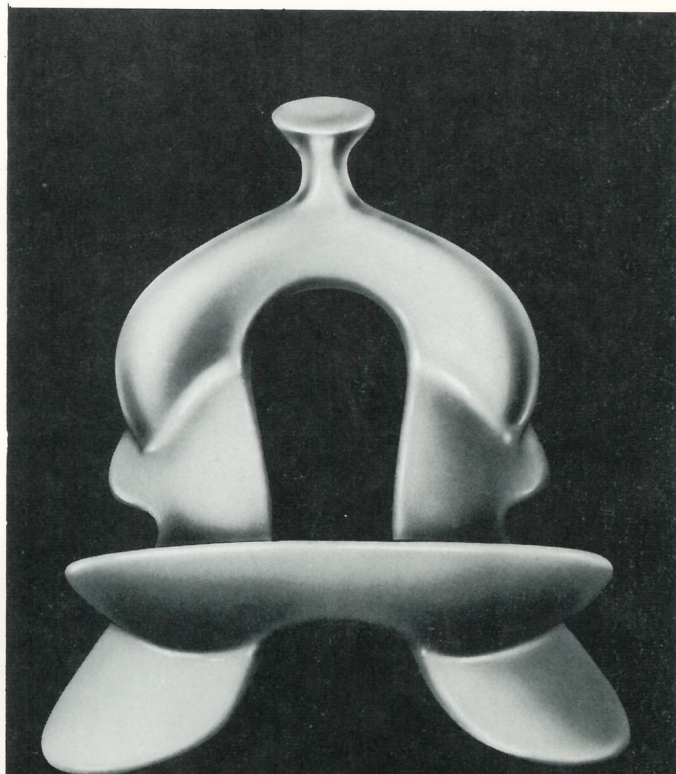
### TREE No. 2104X

**NAME:** Boys Light Weight Bowman  
**SEAT:** 13"  
**FORK:** 11½"  
**HORN:** F-10—2½" Head—Flat Top  
**CANTLE:** 2½"  
**GULLETT:** 5¾"  
**COVER:** Bull  
**PRICE:** \$34.00 each

### TREE No. 3104X

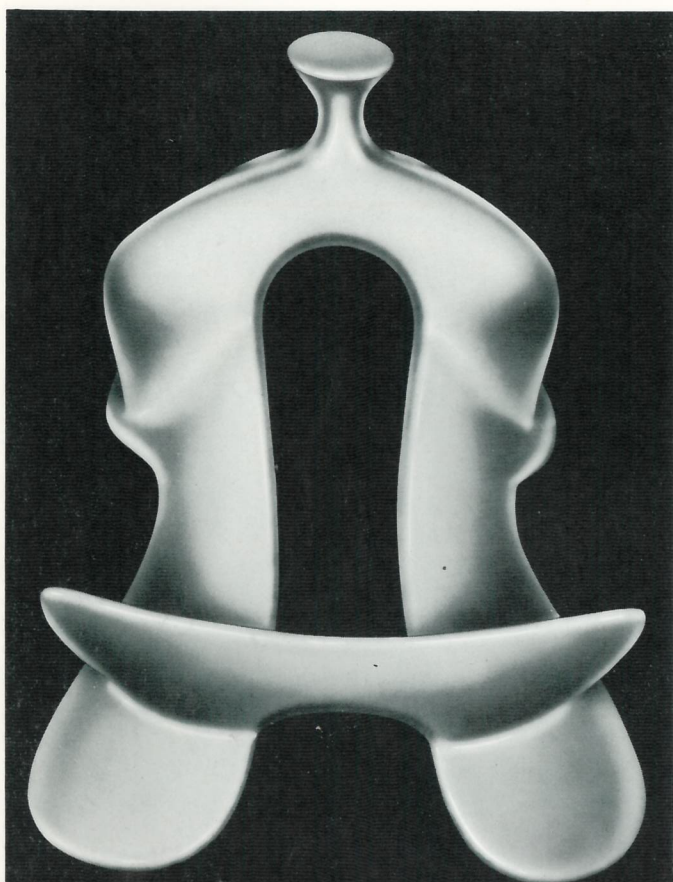
**NAME:** Boys Light Weight Bowman  
**SEAT:** 13"  
**FORK:** 11½"  
**HORN:** #2 Mex. 3" Head  
**CANTLE:** 2½" Komfort Kantle  
**GULLETT:** 5¾"  
**COVER:** Bull  
**PRICE:** \$34.00 each

*These trees in stock  
for immediate delivery,  
in sizes listed only,  
at this price.*





## Light Weight Cut Out Leg Bowman



### **TREE No. 2104<sup>1</sup>/<sub>2</sub>**

**NAME:** Light Weight Cut Out Leg Bowman  
**SEAT:** 15" and 14"  
**FORK:** 12"  
**HORN:** F-10—3" Head—Flat Top  
**CANTLE:** 2<sup>1</sup>/<sub>2</sub>"  
**GULLETT:** 5<sup>3</sup>/<sub>4</sub>"  
**COVER:** Bull  
**PRICE:** \$36.00 each

### **TREE No. 3104<sup>1</sup>/<sub>2</sub>**

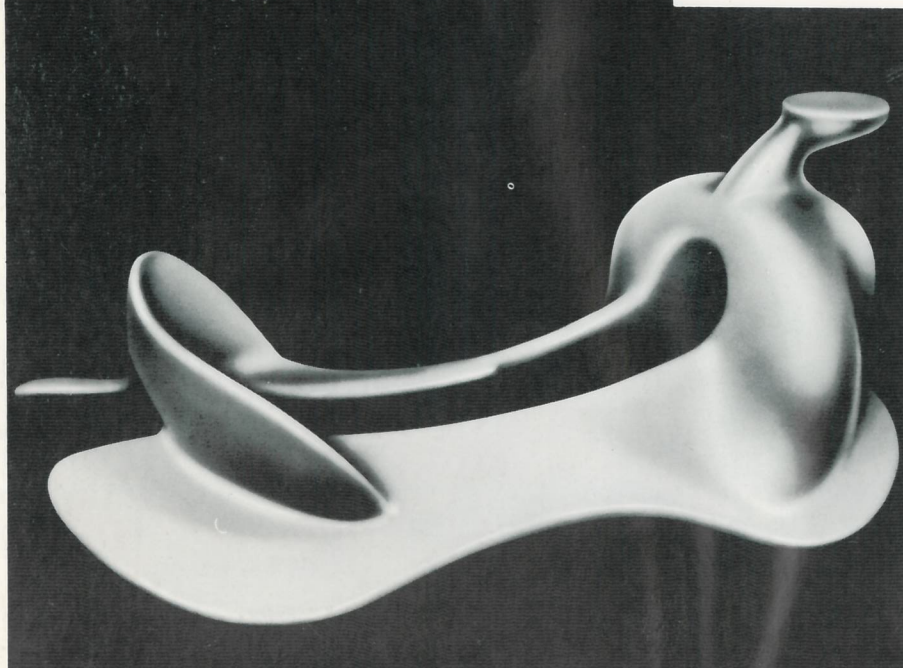
**NAME:** Light Weight Cut Out Leg Bowman  
**SEAT:** 15" and 14"  
**FORK:** 12"  
**HORN:** #8 Mex. 3" Head  
**CANTLE:** 2<sup>1</sup>/<sub>2</sub>" Komfort Kantle  
**GULLETT:** 5<sup>3</sup>/<sub>4</sub>"  
**COVER:** Bull  
**PRICE:** \$36.00 each

### **TREE No. 3104<sup>1</sup>/<sub>2</sub>X**

**NAME:** Boys Cut Out Leg Bowman  
**SEAT:** 13"  
**FORK:** 12"  
**HORN:** #2 Mex. 3" Head  
**CANTLE:** 2<sup>1</sup>/<sub>2</sub>" Komfort Kantle  
**GULLETT:** 5<sup>3</sup>/<sub>4</sub>"  
**COVER:** Bull  
**PRICE:** \$34.00 each

### **TREE No. 2104<sup>1</sup>/<sub>2</sub>X**

**NAME:** Boys Cut Out Leg Bowman  
**SEAT:** 13"  
**FORK:** 12"  
**HORN:** F-10—2<sup>1</sup>/<sub>2</sub>" Head—Flat Top  
**CANTLE:** 2<sup>1</sup>/<sub>2</sub>"  
**GULLETT:** 5<sup>3</sup>/<sub>4</sub>"  
**COVER:** Bull  
**PRICE:** \$34.00 each



*These trees in stock  
for immediate delivery,  
in sizes listed only,  
at this price.*



## Light Weight Little Wonder

### **TREE No. 1574**

**NAME:** Light Weight Little Wonder

**SEAT:** 15" and 14"

**FORK:** 13"

**HORN:** F-10—2¼" Head—Flat Top

**CANTLE:** 2½"

**GULLETT:** 5¾"

**COVER:** Bull

**PRICE:** \$36.00 each

### **TREE No. 2574**

**NAME:** Light Weight Little Wonder

**SEAT:** 15" and 14"

**FORK:** 13"

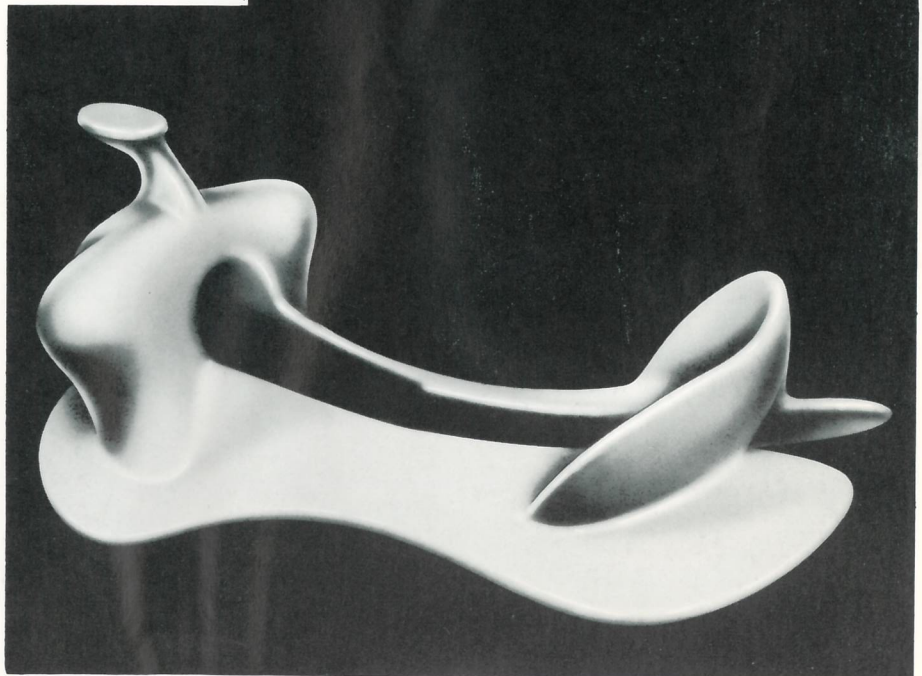
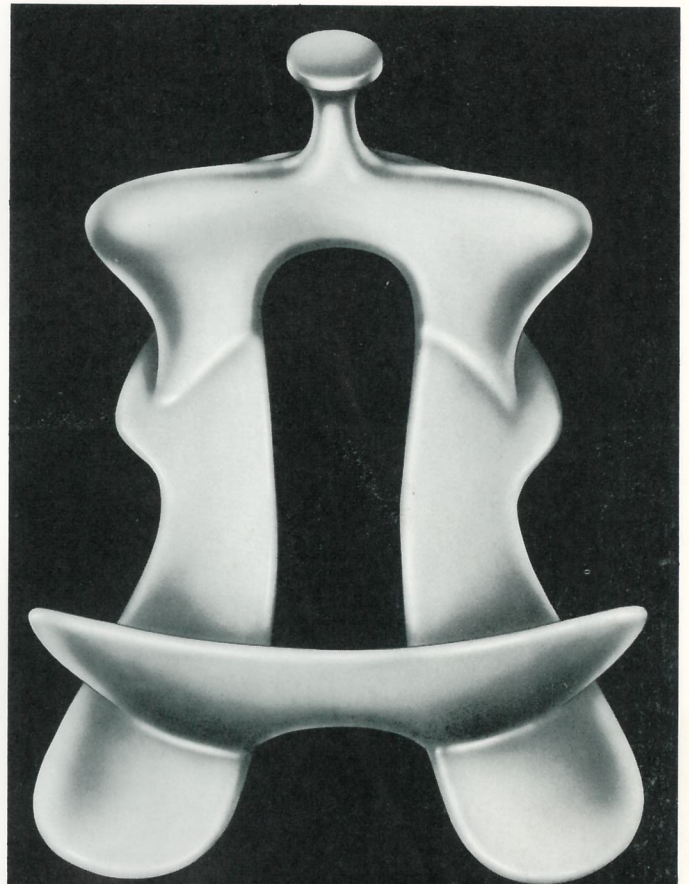
**HORN:** F-10—2¼" Head—Flat Top

**CANTLE:** 2½" Komfort Kante

**GULLETT:** 5¾"

**COVER:** Bull

**PRICE:** \$36.00 each



*These trees in stock  
for immediate delivery,  
in sizes listed only,  
at this price.*



## Swafford Roper



### **TREE No. 1062**

**NAME:** Swafford Roper

**SEAT:** 15"

**FORK:** 14"

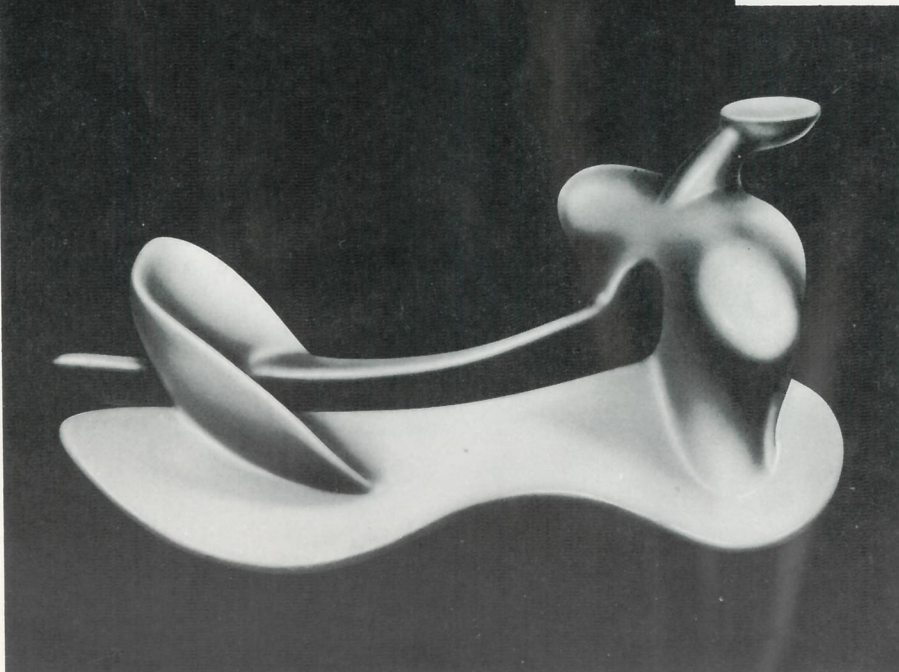
**HORN:** #8 Mex. 3" Head

**CANTLE:** 3½" Komfort Kantle

**GULLETT:** 6½"

**COVER:** Bull

**PRICE:** \$36.00 each



*This tree in stock  
for immediate delivery,  
in sizes listed only,  
at this price.*



## Little Wonder

### TREE No. 5740

**NAME:** Little Wonder

**SEAT:** 15"

**FORK:** 14"

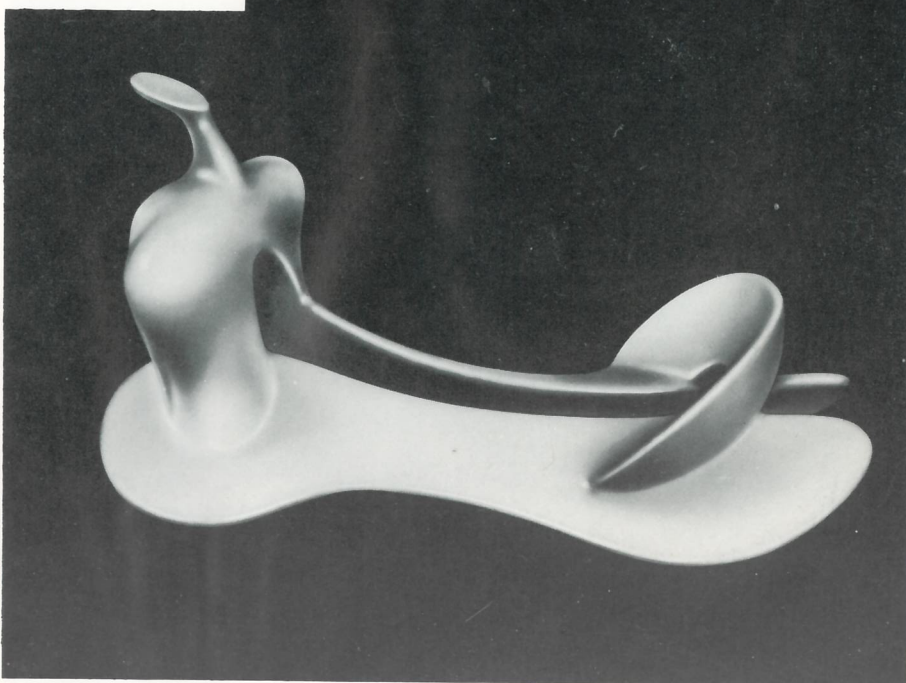
**HORN:** #1-2¼" Head

**CANTLE:** 3"

**GULLETT:** 6"

**COVER:** Bull

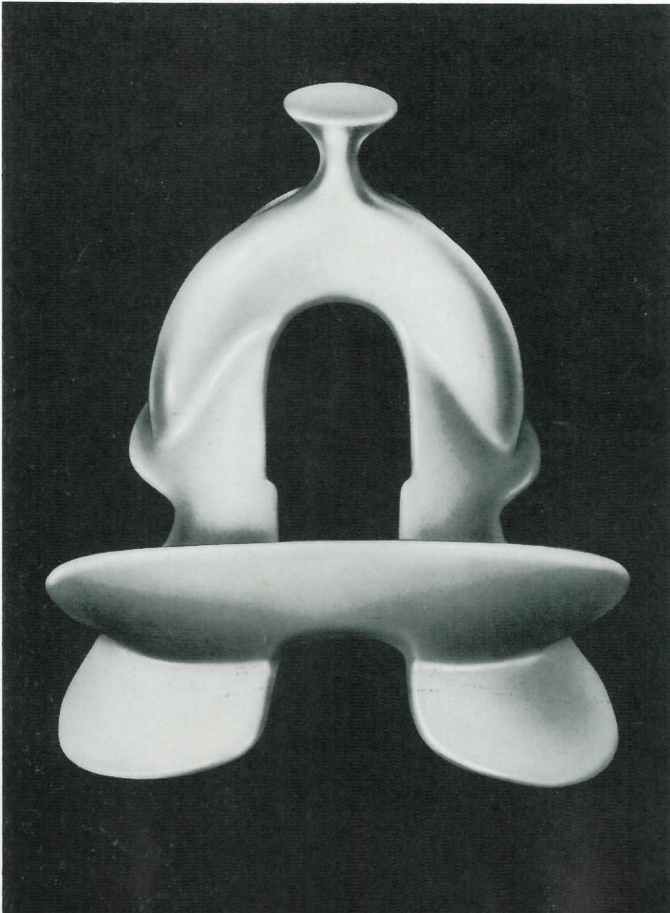
**PRICE:** \$36.00 each



*This tree in stock  
for immediate delivery,  
in sizes listed only,  
at this price.*



## Colorado Roper



### **TREE No. 28**

**NAME:** Colorado Roper

**SEAT:** 15½"

**FORK:** 10½"

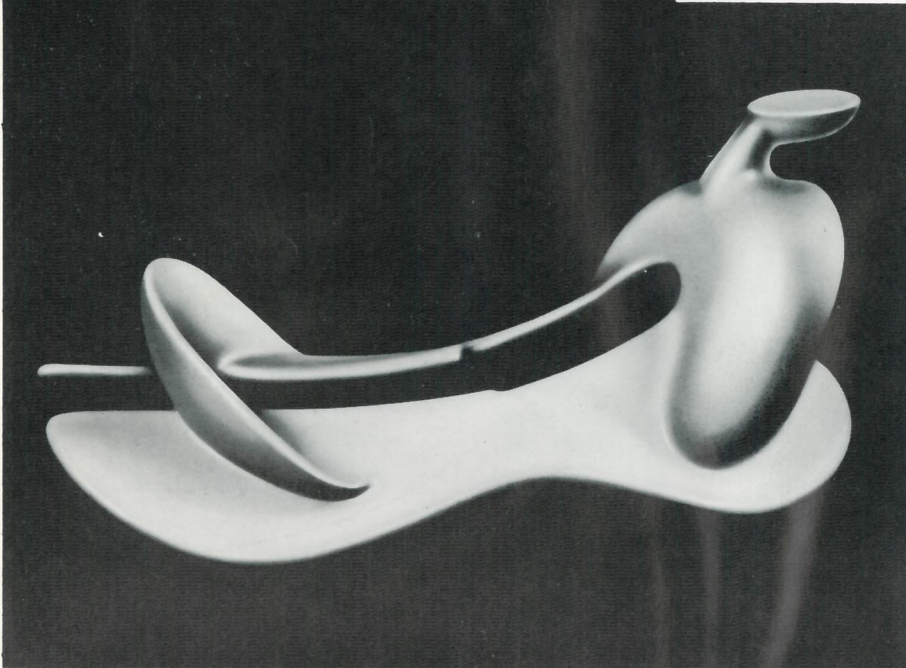
**HORN:** #8 Mex. 3½" Head

**CANTLE:** 3"

**GULLETT:** 5¾"

**COVER:** Bull

**PRICE:** \$36.00 each



*This tree in stock  
for immediate delivery,  
in sizes listed only,  
at this price.*



## Fits Em Komfort

### **TREE No. 500**

**NAME:** Fits Em Komfort

**SEAT:** 15"

**FORK:** 15"

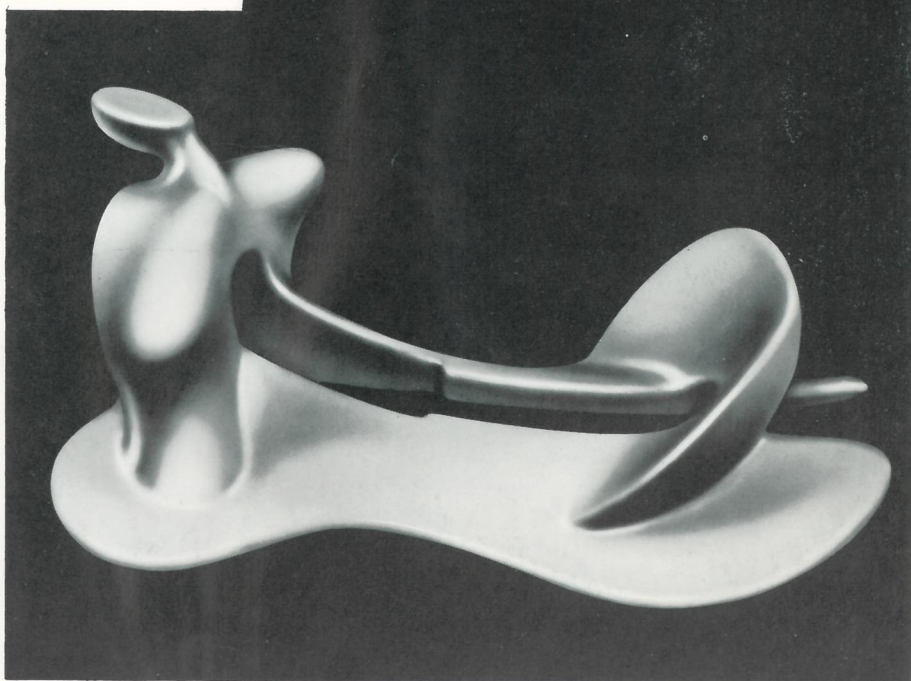
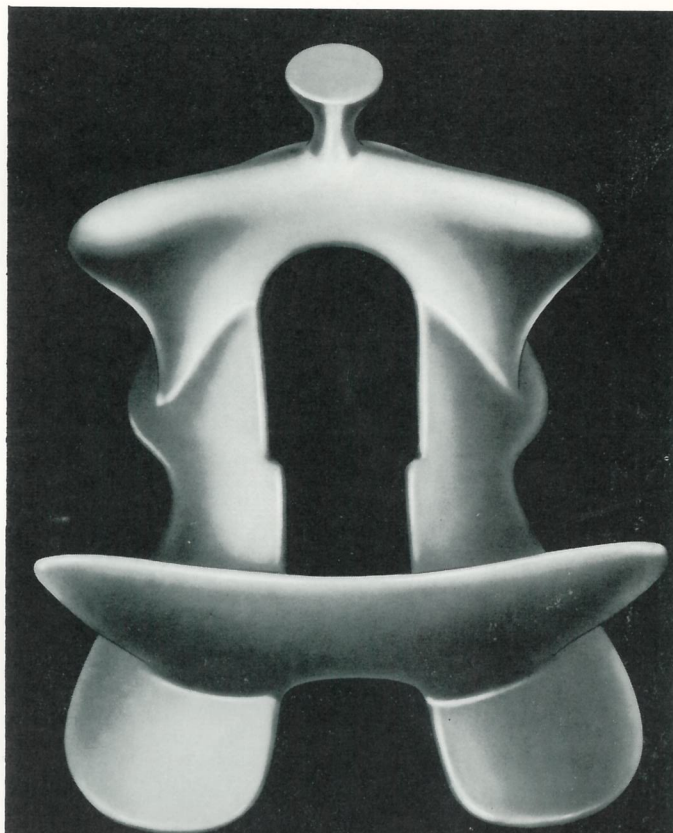
**HORN:** #8 Mex. 3" Head

**CANTLE:** 3½" Komfort Kandle

**GULLETT:** 6½"

**COVER:** Bull

**PRICE:** \$36.00 each



*This tree in stock  
for immediate delivery,  
in sizes listed only,  
at this price.*



## Light Weight Low Moose

### **TREE No. 1934**

**NAME:** Light Weight Low Moose

**SEAT:** 15" and 14"

**FORK:** 12"

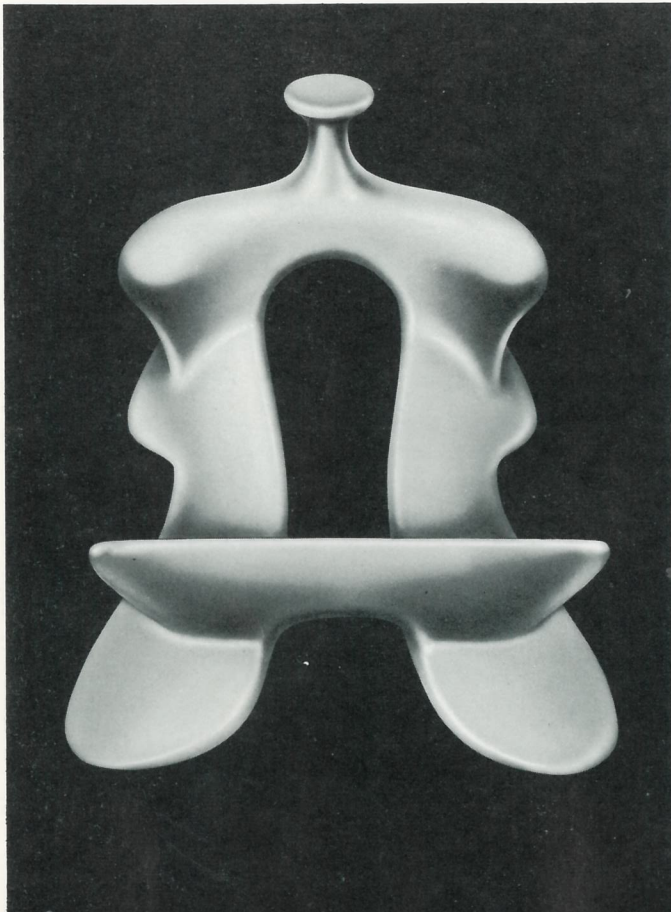
**HORN:** F-10—2½" Head—Flat Top

**CANTLE:** 2½"

**GULLETT:** 5¾"

**COVER:** Bull

**PRICE:** \$36.00 each



### **TREE No. 2934**

**NAME:** Light Weight Low Moose

**SEAT:** 15" and 14"

**FORK:** 12"

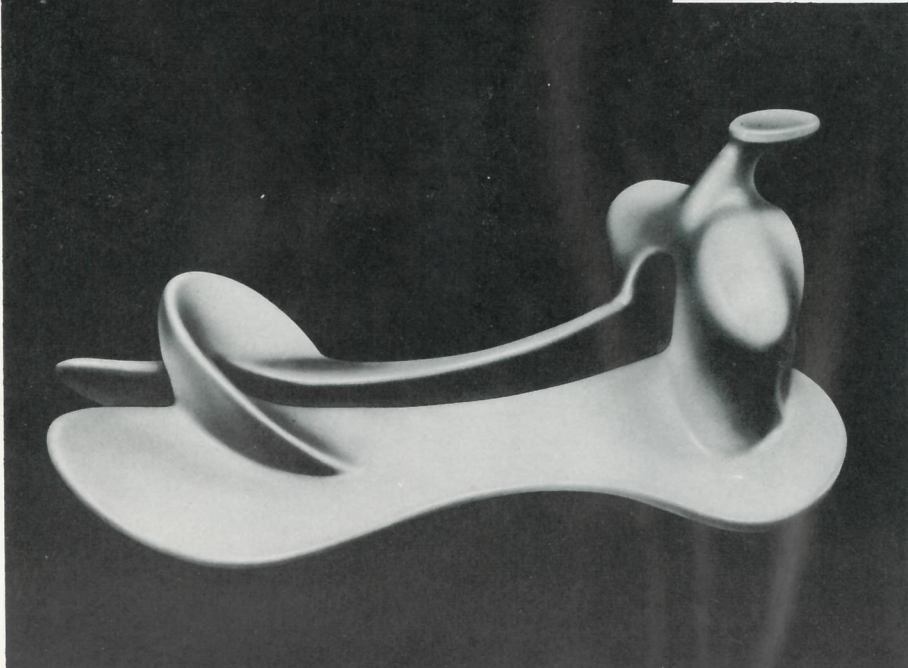
**HORN:** F-10—2½" Head—Flat Top

**CANTLE:** 2½" Komfort Kantle

**GULLETT:** 5¾"

**COVER:** Bull

**PRICE:** \$36.00 each



*These trees in stock  
for immediate delivery,  
in sizes listed only,  
at this price.*



## Colorado Youth

### **TREE No. 31**

**NAME:** Colorado Youth

**SEAT:** 13"

**FORK:** 11½"

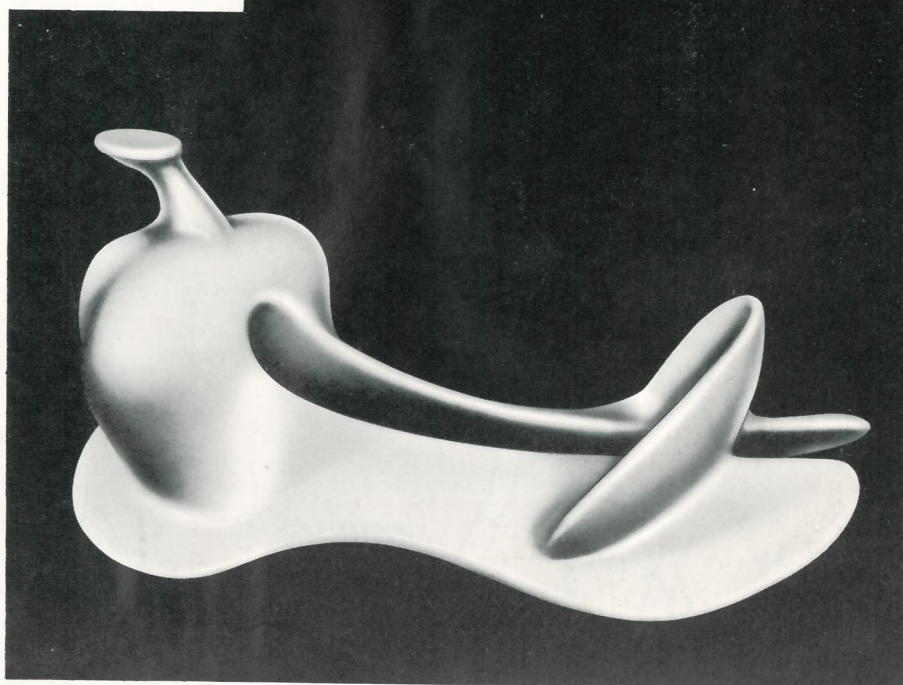
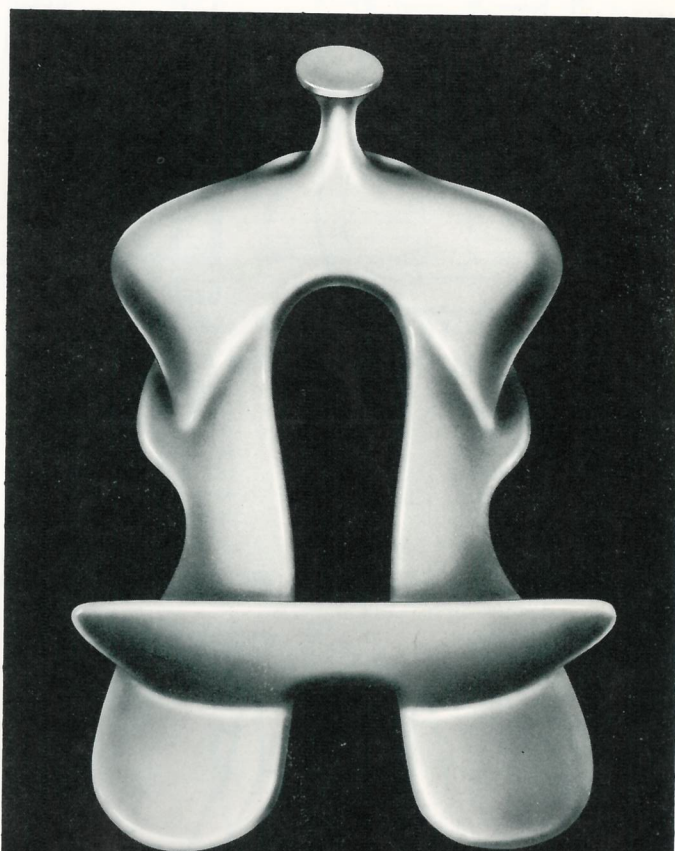
**HORN:** F-10—2" Head—Flat Top

**CANTLE:** 3"

**GULLETT:** 5¼"

**COVER:** Bull

**PRICE:** \$34.00 each

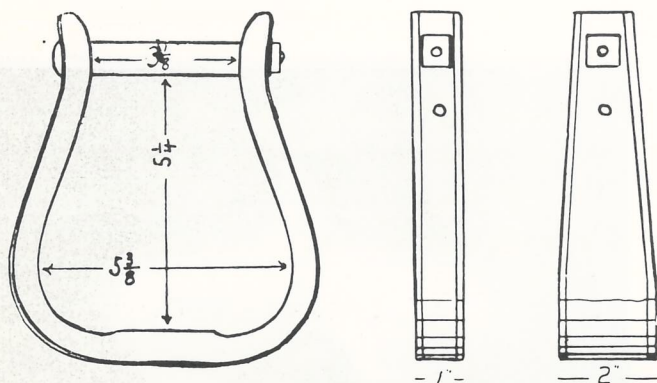


*This tree in stock  
for immediate delivery,  
in sizes listed only,  
at this price.*



# Saddlery Supplies — Stirrups

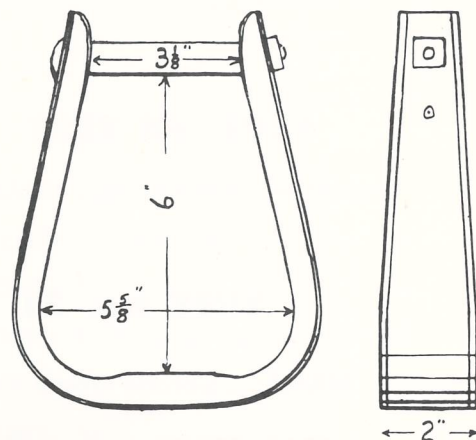
## STANDARD (VISALIA)



**No. 101—VISALIA WOOD STIRRUPS**

	Dozen Pairs
1" Tread x 3" Roller.....	\$35.30
1 1/2" Tread x 3" Roller.....	36.30
2" Tread x 3" Roller.....	38.30
2 1/2" Tread x 3" Roller.....	42.00
3" Tread x 3" Roller.....	46.00
3 1/2" Tread x 3" Roller.....	50.70
4" Tread x 3" Roller.....	56.20
4 1/2" Tread x 3" Roller.....	63.60
5" Tread x 3" Roller.....	70.60

## ROPER

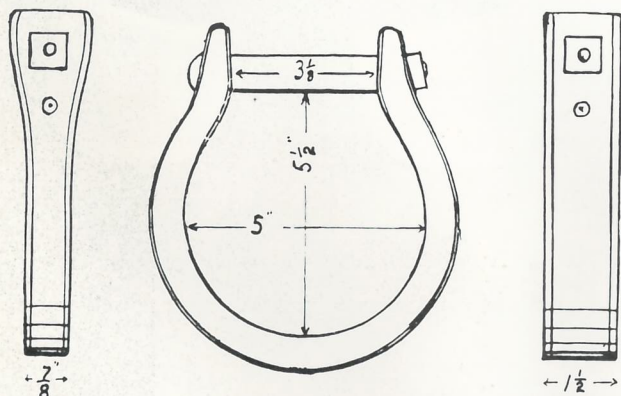


**No. 801—ROPER**

	Dozen Pairs
<b>Galvanized Bound</b>	
2" Tread x 3" Roller.....	\$42.60
2 1/2" Tread x 3" Roller.....	46.80
3" Tread x 3" Roller.....	51.30
3 1/2" Tread x 3" Roller.....	56.70
4" Tread x 3" Roller.....	62.00
4 1/2" Tread x 3" Roller.....	68.40
5" Tread x 3" Roller.....	74.80

## RODEO

## OXBOW

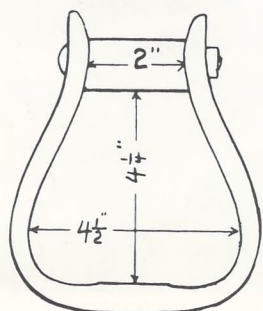


## RODEO CONTEST

No. 500—3" Roller,  
7/8" Tread.....\$40.50 Dz. Pr.

## OXBOW

	Doz. Prs.
No. 201—3" Roller	
1" Tread.....	\$36.80
1 1/2" Tread.....	38.00
2" Tread.....	39.40



## BOY'S PLAIN WOOD

## OVERSIZE STANDARD

FOR LEATHER COVERING (HAGELSTEIN)  
**No. 401**

	Dozen Pairs
<b>Galvanized Bound</b>	
1 1/2" Tread x 3" Roller.....	\$38.30
2" Tread x 3" Roller.....	42.00
2 1/2" Tread x 3" Roller.....	46.30
3" Tread x 3" Roller.....	51.20
3 1/2" Tread x 3" Roller.....	56.40
4" Tread x 3" Roller.....	62.20

## No. 1401—BOY'S PLAIN WOOD

	Dozen Pairs
2" Tread x 2" Roller.....	\$25.80
2 1/2" Tread x 2" Roller.....	27.30

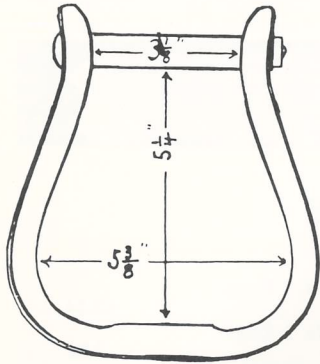
## No. 1501—BOY'S PLAIN WOOD WITH WOOD ROLLER

	Dozen Pairs
<b>Plain</b>	
2" Tread x 2" Roller.....	\$17.10
2 1/2" Tread x 2" Roller.....	21.20
3" Tread x 2" Roller.....	24.35



# Saddlery Supplies - Stirrups

## SHAPE and SIZE



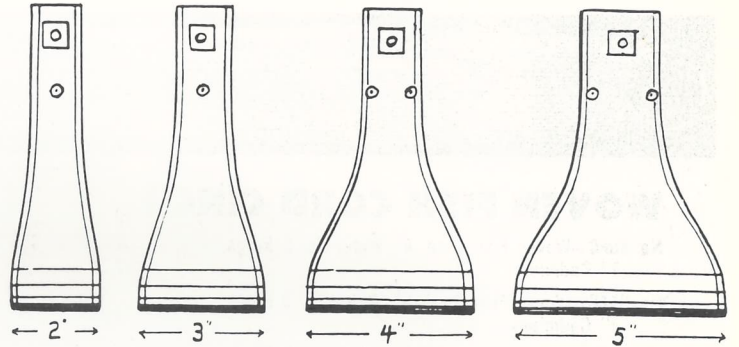
### STANDARD CURVE SIDE BELL BOTTOM

3 1/8" Steel Roller

No. 901—Galvanized bound, copper riveted. A well made, sturdy and durable stirrup. Lacquer finished. Also in polished brassbound or stainless steel with polished chrome bolt. Price on request.

No. 1601—Deep bell bottom. Similar to No. 901 except 6 inches deep.

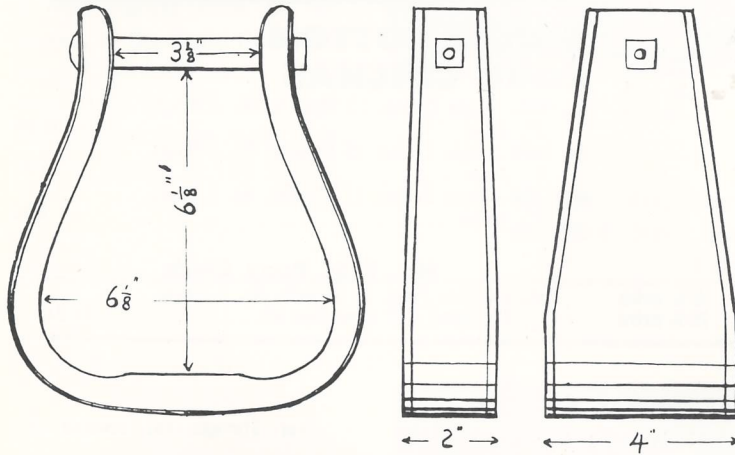
## BELL BOTTOM (NEW ITEM)



### No. 901—BELL BOTTOM

Galvanized Bound	Per Dozen Pair	
	No. 901	No. 1601
2" Tread x 3" Roller.....	\$38.30	
2 1/2" Tread x 3" Roller.....	42.20	\$58.50
3" Tread x 3" Roller.....	46.90	59.60
3 1/2" Tread x 3" Roller.....	52.60	64.40
4" Tread x 3" Roller.....	60.60	68.00
4 1/2" Tread x 3" Roller.....	68.50	74.50
5" Tread x 3" Roller.....	75.30	
6" Tread x 3" Roller.....	89.60	

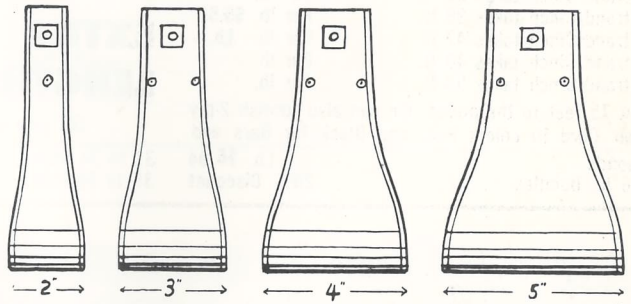
## OVERSHOE



### No. 1001—OVERSHOE STIRRUPS

Galvanized Bound	Dozen Pairs
1 1/2" Tread x 3" Roller.....	\$40.00
2" Tread x 3" Roller.....	41.10
2 1/2" Tread x 3" Roller.....	45.40
3" Tread x 3" Roller.....	49.80
3 1/2" Tread x 3" Roller.....	54.90
4" Tread x 3" Roller.....	60.20
5" Tread x 3" Roller.....	74.20
6" Tread x 3" Roller.....	89.70

## CURVE SIDE (MORAN)



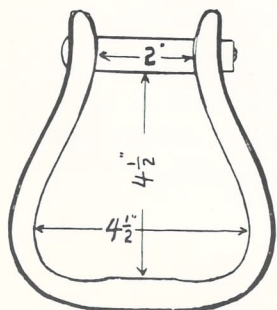
### No. 301—CURVESIDE MORAN

	Dozen Pairs
1 1/2" Tread x 3" Roller.....	\$36.30
2" Tread x 3" Roller.....	38.30
2 1/2" Tread x 3" Roller.....	42.20
3" Tread x 3" Roller.....	46.90
3 1/2" Tread x 3" Roller.....	52.60
4" Tread x 3" Roller.....	59.70
4 1/2" Tread x 3" Roller.....	67.50
5" Tread x 3" Roller.....	74.60
6" Tread x 3" Roller.....	86.40

## YOUTH'S (VISALIA)

GALVANIZED BOUND

### No. 1301



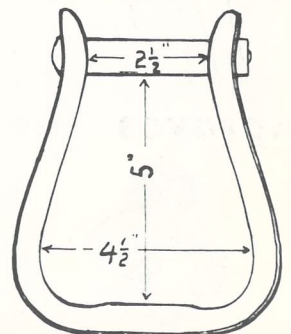
### No. 1301—VISALIA

	Dozen Pairs
1 1/4" Tread x 2" Roller.....	\$35.20
1 1/2" Tread x 2" Roller.....	35.50
2" Tread x 2" Roller.....	36.50
2 1/2" Tread x 3" Roller.....	40.60

## LADIES' (VISALIA)

State Length of Roller

### No. 1201



### No. 1201—LADIES' VISALIA

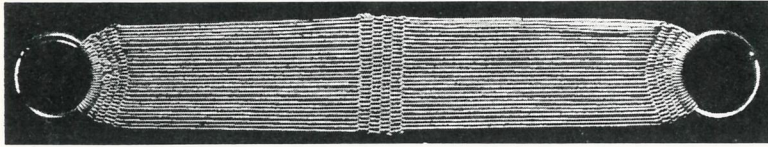
	Dozen Pairs
1 1/2" Tread x 2 1/2" Roller.....	\$37.20
2" Tread x 2 1/2" Roller.....	38.30
2 1/2" Tread x 2 1/2" Roller.....	42.20
3" Tread x 2 1/2" Roller.....	46.90

WE ALLOW FREIGHT  
BASED ON...  
100 Lb. or \$100  
Shipments and up.

EXCEPTIONS:  
Rope, Trees,  
Horseshoes,  
and Leather

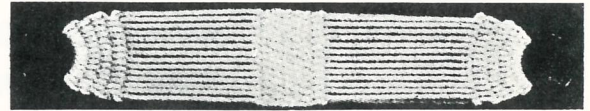


## Cotton and Fish Cord Cinchas



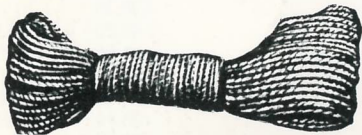
### WOVEN FISH CORD CINCH

No. 45FC—Woven Fish Cord, 4" Wide, No. 0 Rings, 3" Cadmium .....	\$4.24
No. 55FC—Woven Fish Cord, 5" Wide, No. 0 Rings, 3" Cadmium .....	4.60
No. 65FC—Woven Fish Cord, 6" Wide, No. 0 Rings, 3" Cadmium .....	4.78



### DOUBLE COTTON CORD CINCHAS

No. 25DC—Double Cotton, 4" Wide, No. 1 Rings, 3", Japan .....	\$2.54
No. 29DC—Double Cotton, 5" Wide, No. 1 Rings, 3", Japan .....	2.90
No. 33DC—Double Cotton, 6" Wide, No. 1 Rings, 3", Japan .....	3.26



### MOHAIR CINCH CORD

We Can Furnish Any Amount You Want

13 Strand Cinch takes 33 ft. ....	Per lb.	
15 Strand Cinch takes 38 ft. ....	Per lb.	\$5.50
17 Strand Cinch takes 42 ft. ....	Per lb.	Lb.
19 Strand Cinch takes 48 ft. ....	Per lb.	
21 Strand Cinch takes 54 ft. ....	Per lb.	

About 75 feet to the pound. We can also furnish 2-ply Mohair Cord in colors Red, and Black for Bars and Diamonds  
 Lb. **\$6.94**  
 In 50 lb. bundles ..... 20% Discount

### EXTRAS ON CINCHAS

TONGUES INSTALLED

JAPANNED .....	.20 Each
CADMIUM .....	.20 Each
BRASS .....	.40 Each

### EXTRA LENGTHS

(30 inch is standard)

31 to 34 inch .....	10% extra
35 to 38 inch .....	20% extra



### SINGLE COTTON CORD CINCHAS

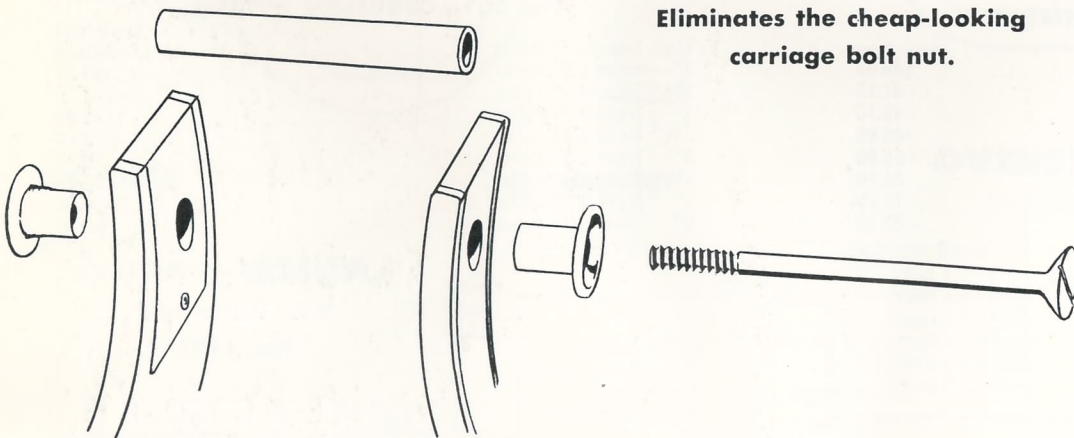
No. 13SC—Single Cotton, 13 Strands, No. 3 Rings, 3", Japan .....	\$1.86
No. 15SC—Single Cotton, 15 Strands, No. 3 Rings, 3", Japan .....	1.94
No. 17SC—Single Cotton, 17 Strands, No. 3 Rings, 3", Japan .....	2.02

#### No. 15SC Pony Cinch

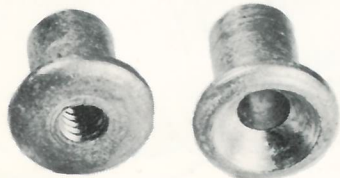
Single Cotton Pony, 15 Strands, No. 3 Rings,  
3", Japan, 22" Long over all ..... **\$1.94**

## Ruwart FLUSH STIRRUP FASTENER

Eliminates the cheap-looking carriage bolt nut.



### Improves the Appearance of Any Stirrup!



Actual Size

Please Specify — "Ruwart Flush Fastener" when ordering stirrups.

Pair ..... \$ .80

For Stirrups not covered—the effect is a much more neat and attractive appearance that helps sell the saddle, and adds to the satisfaction of the purchaser.

For Covered Stirrups—Ideal for leather covering for the castings remain in the stirrup so that the leather may be entirely machine sewn. This not only reduces the time required but gives a smooth neat effect that enhances the quality appeal of the saddle.

The same advantages apply to rawhide covering.

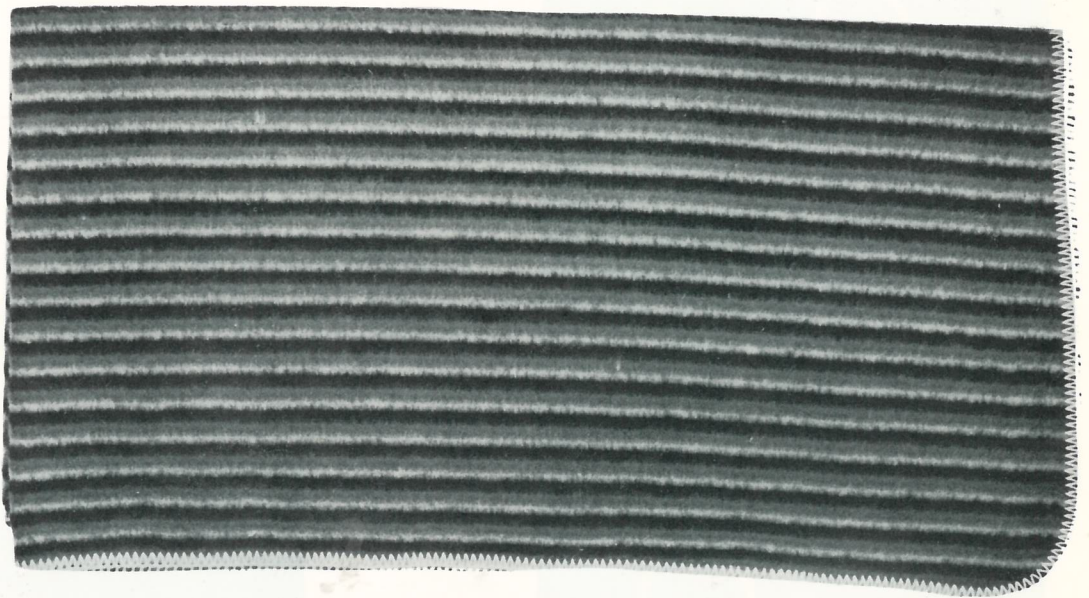


## Blankets

### THE SUNDANCE

#### Zebra Stripe

A New Blanket made by the makers of the World Renowned Karakul—available in 30" x 60" size, made of 80% Wool and 20% Cotton in the warp. This Blanket Comes in Two Colors:

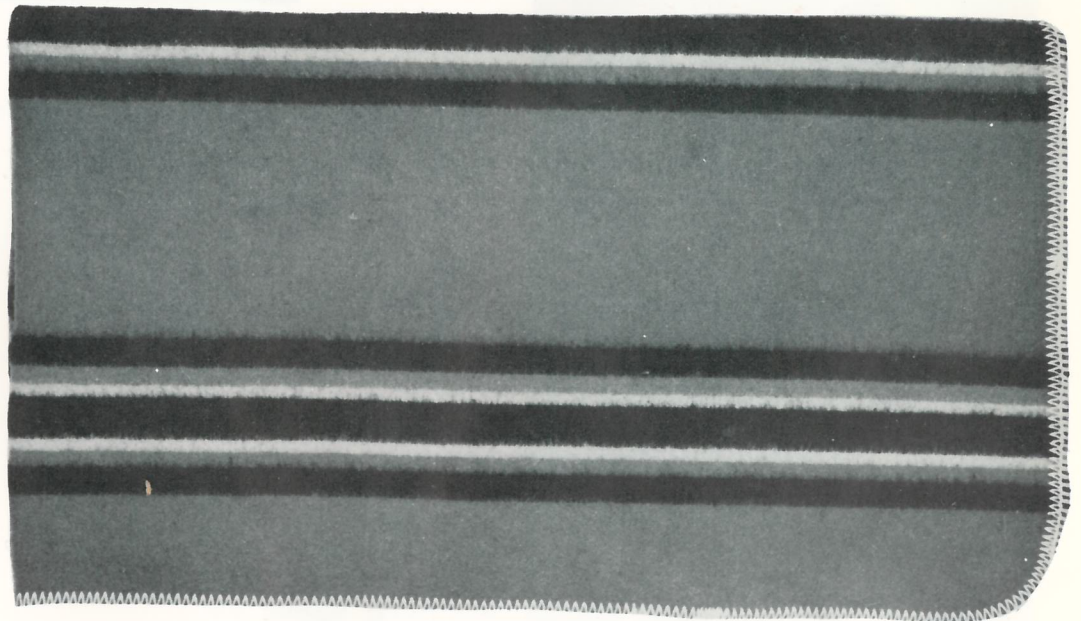


- No. 385-1—Red, Green and Gold Stripes.....\$12.20 Ea.
- No. 385-4—Green, Black and Gold Stripes.....\$12.20 Ea.

### THE SUNDANCE

#### Panel Design

A New Blanket made by the makers of the World Renowned Karakul—available in 30 x 60" size, made of 80% Wool and 20% Cotton in the Warp. This Blanket comes in Two Colors:



- No. 380-2—Large Red Panels with Black, Green and Gold Strips.....\$12.20 Ea.
- No. 380-12—Large Gray Panels with Black, Red and Gold Stripe.....\$12.20 Ea.



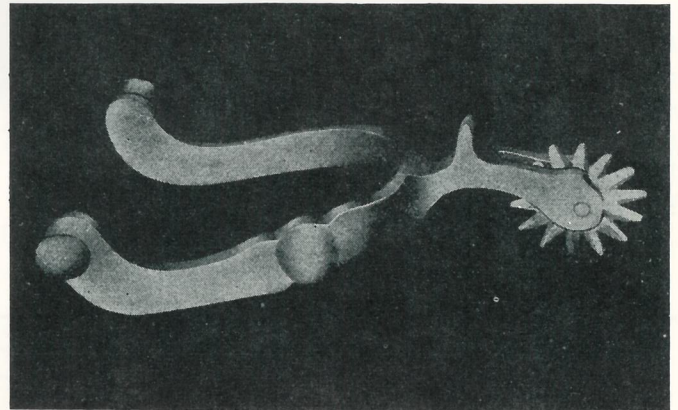
## Ruwart's New Bits and Spur



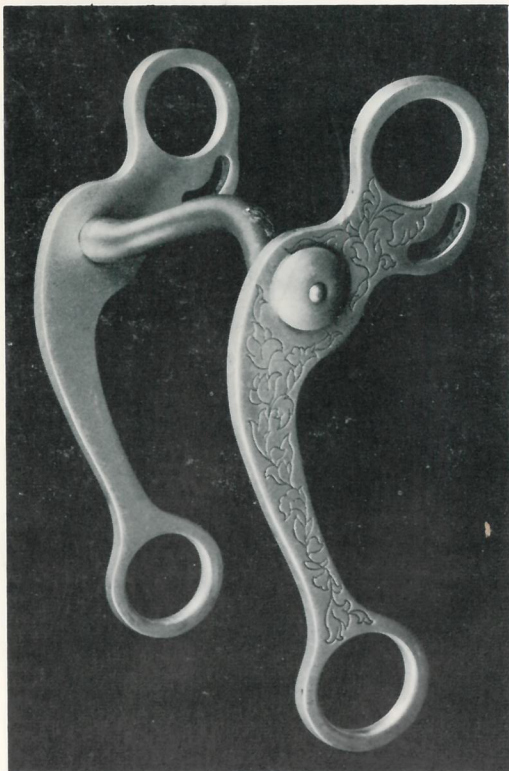
**Ruwart's New Stainless Steel Cutting Horse Bit.** A Popular Cutting or Grazing Style Bit. Made of Cast Stainless Steel with either an embossed or plain check. 8" Check, 5 1/8" Mouth.

No. 8291-E ..... \$18.70 Ea.

No. 8291-P ..... \$18.70 Ea.



No. 80—Lady's and Boy's Aluminum Spur.  
Extra Light Weight. Hand Polished ... \$6.50 a pr.



**Ruwart's New Bit, Stainless Steel Port with Aluminum Checks, or Aluminum Port with Aluminum Checks.** Supplied only with Embossed Checks.

No. 106-S.P. .... \$13.00 Ea.

No. 106-A ..... \$ 6.20 Ea.



