

The Ruwart Manufacturing Co.

Leading High Grade Saddle Tree
Makers for the past 50 years take
pleasure in presenting you with

Catalog No. 6

Largest Assortment of Up-To-Date
Saddle Trees in the World

TO OUR CUSTOMERS

Once more we have made a scoop in the field of Industry—being the first to feature a complete illustrated catalog—showing the newest assortment of real COWBOY SADDLE TREES—every presented to you in booklet form.

Many new saddle trees are displayed herein and the latest to lead the field are our "KOMFORT KANTLE" Trees—as shown on Pages 4 and 5. These "Komfort Kantles" present a brand new idea in comfort for the rider—giving ample seat room, and yet made low enough so they will not injure the rider's back. Why not be among the first to feature this new idea in your saddles?

RUWART HAS KEPT ABREAST OF THE TIMES THROUGHOUT THE HISTORY OF SADDLE TREES

Until about thirty years ago there were approximately only one-half dozen popular style saddle trees. All were made on the A-Type Fork. Shortly after this period the swell fork was introduced, then came the dished cantle—followed by cut under swells—leg cuts—and the so-called "freak swells." Then the boys from the Shows and Rodeos created and demanded the Association and Low Roping Type Trees. The Mexican Horn was dug out of the Archives and it revolutionized saddle making—in fact, the Mexican Horn increased Saddle Sales over fifty per cent during the past two years. The "Komfort" Kantle" is new and will prove another factor in stimulating a demand for new saddles.

Throughout this progress of saddle tree making—Ruwart has been first to originate and develop new ideas. More new ideas will appear in the future and Ruwart will lead the field, as usual.

ONE REASON WHY RUWART SADDLE TREES ARE BETTER

Being located in Denver—(the mile high city)—with its year around dry climate and sunshine almost 365 days each year—enables us to dry and season our trees **WITHOUT ARTIFICIAL HEAT**. This is a very important factor in making saddle trees. Those made in damp climates must naturally be dried artificially—very often resulting in a warped or twisted tree.

A FEW WORDS CONCERNING BULL HIDE

We obtain Bull hides directly from the slaughter houses in Denver—from fresh killed Bulls. These fresh hides retain their life and elasticity. The hair is removed by the scalding process. **NOW THEN**—compare these high grade Bull Hides with inferior ones used by others—which very often include dry, brittle, fallen, country hides, that are later soaked in a strong lime solution—thus removing any remaining life from these already practically lifeless hides. The result is a thin, inferior covering on the tree which does not have fifty per cent the strength obtained from Fresh Bull Hides.

Ruwart's Fresh Bull Hide Covered Trees are distinctly in a class by themselves. No other manufacturer uses Bull Hide—therefore, no other manufacturer makes as stout a saddle tree as Ruwart—for **BULL HIDE IS THE STOUTEST AND HEAVIEST SADDLE TREE COVERING POSSIBLE TO OBTAIN IN COMMERCIAL QUANTITIES**—and incidentally is the **HIGHEST PRICED**.

COWBOYS DEMAND RUWART SADDLE TREES

Each year Ruwart Trees continue to be the favorite among the cowboy trade. It is not unusual for cowboys to specify on their saddle orders: "I WANT A GOOD FOUNDATION UNDER MY SADDLE—SO—WHEN YOU MAKE IT—BE SURE AND USE A GENUINE RUWART BULL-HIDE COVERED TREE."

LOW ROPER "KOMFORT KANTLE"

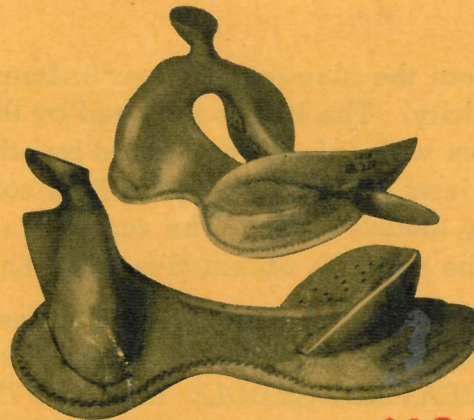


No. 1005 **\$20.50**

Width of Fork, 13". Cantle—3" high, 13" wide, 1½" dish. Horn—No. 2X Sterling, 3" high, 2½" head. Gullett Height, 8¼". Gullett Width, 5¼".
BEEF COVER, \$20.50 BULL COVER, \$22.00

Introducing RUWARTS new "KOMFORT KANTLES" — Our latest development in modern up-to-date trees, designed especially for your comfort and safety.

PERFECTION ROPER "KOMFORT KANTLE"



No. 1012 **\$18.00**

Width of Fork, 13". Cantle—2½" high, 13" wide, 1½" dish. Horn—No. 2 Mex., 2¾" high, 3" head. Gullett Height, 8". Gullett Width, 5¼".
BEEF COVER, \$18.00 BULL COVER, \$19.50

JIM DANDY "KOMFORT KANTLE"



No. 1004 **\$25.50**

Width of Fork, 15". Cantle—3½" high, 14" wide, 1½" dish. Horn—Mex. Sterling, 3" high, 3" head. Gullett Height, 8¼". Gullett Width, 5½".
BEEF COVER, \$25.50 BULL COVER, \$27.00

UNIVERSAL "KOMFORT KANTLE"



No. 1011 **\$19.50**

Width of Fork, 14". Cantle—3¾" high, 13¼" wide, 2" dish. Horn—No. 2X covered, 3" high, 3" head. Gullett Height, 8½". Gullett Width, 6".
BEEF COVER \$19.50 BULL COVER, \$21.00

SID SPECIAL "KOMFORT KANTLE"



No. 1003 **\$17.50**

Width of Fork, 13". Cantle—3½" high, 13" wide, 1½" dish. Horn—No. 3 covered, 2¾" high, 2¼" head. Gullett Height, 8¼". Gullett Width, 6".
BEEF COVER, \$17.50 BULL COVER, \$19.00

"KOMFORT KANTLES" WILL BE BUILT ON ANY OF OUR OTHER TREES FOR \$1.00 EXTRA.

High Fits 'Em 'Komfort Kante'

No. 1009

\$24.50



Width of Fork, 14 $\frac{3}{4}$ ". Cantle—3 $\frac{1}{2}$ " high, 14" wide, 1 $\frac{1}{2}$ " dish. Horn—No. 7 Sterling, 3" high, 2" head. Gullett Height, 9". Gullett Width, 6".

BEEF COVER, \$24.50 BULL COVER, \$26.00

Low Bronc "Komfort Kante"

No. 1010

\$20.50



Width of Fork, 14 $\frac{3}{4}$ ". Cantle—3" high, 14" wide, 1 $\frac{1}{2}$ " dish. Horn—No. 3 covered, 2 $\frac{1}{2}$ " high, 2 $\frac{1}{2}$ " head. Gullett Height, 8 $\frac{1}{2}$ ". Gullett Width, 5 $\frac{1}{2}$ ".

BEEF COVER, \$20.50 BULL COVER, \$22.00

RUWART'S "KOMFORT KANTLES" ARE NEW AND WILL HELP TO INCREASE YOUR SALES. WHY NOT BE AMONG THE FIRST TO FEATURE THESE GOOD LOOKING TREES IN YOUR SADDLES?

In Between Fits 'Em "Komfort Kante"

No. 1008

\$24.50



Width of Fork, 14". Cantle—3 $\frac{1}{2}$ " high, 13" wide, 1 $\frac{1}{2}$ " dish. Horn—No. 2X Sterling, 3" high, 3" head. Gullett Height, 8 $\frac{1}{2}$ ". Gullett Width, 5 $\frac{3}{4}$ ".

BEEF COVER, \$24.50 BULL COVER, \$26.00

RUWART'S "KOMFORT KANTLES" GIVE YOU THE WIDTH AND COMFORT DESIRED — YET ARE LOW ENOUGH IN THE CENTER SO THEY WILL NOT HIT THE RIDER'S BACK.

L. D. Roper "Komfort Kante"

No. 1013

\$17.00



Width of Fork, 12". Cantle—2 $\frac{1}{2}$ " high, 13" wide, 1 $\frac{1}{2}$ " dish. Horn—No. 8 Mex., 3 $\frac{1}{2}$ " high, 3" head. Gullett Height, 8 $\frac{1}{4}$ ". Gullett Width, 5 $\frac{3}{4}$ ".

BEEF COVER, \$17.00 BULL COVER, \$18.50

In Between Roper "Komfort Kante"

No. 1006

\$22.50



Width of Fork, 13". Cantle—3 $\frac{1}{2}$ " high, 13" wide, 1 $\frac{1}{2}$ " dish. Horn—No. 11 $\frac{1}{2}$ Sterling, 2 $\frac{1}{2}$ " high, 2 $\frac{1}{2}$ " head. Gullett Height, 8". Gullett Width, 5 $\frac{1}{2}$ ".

BEEF COVER, \$22.50 BULL COVER, \$24.00

AMARILLO ROPER



No. 682 **\$22.50**

Width of Fork, 13". Cantle—3½" high, 13" wide, 1½" dish. Horn—Mex. Sterling, 2¾" high, 3" head. Gullett Height, 8½". Gullett Width, 5½".

BEEF COVER, \$22.50 BULL COVER \$24.00

VAN HORN ROPER



No. 959 **\$15.50**

Width of Fork, 13". Cantle—2½" high, 11" wide, ¾" dish. Horn—No. 2 covered, 2¼" high, 2½" head. Gullett Height, 8¼". Gullett Width, 5½".

BEEF COVER, \$15.50 BULL COVER, \$17.00

VAN HORN SPECIAL ROPER



No. 658 **\$18.50**

Width of Fork, 12". Cantle—2½" high, 11" wide, ¾" dish. Horn—No. 3 Sterling, 2¼" high, 2¼" head. Gullett Height, 7¾". Gullett Width, 5½".

BEEF COVER, \$18.50 BULL COVER, \$20.00

IN BETWEEN ROPER

(Undercut Swell)



No. 670 **\$17.00**

Width of Fork, 13". Cantle—3" high, 13" wide, ¾" dish. Horn—No. 8 Mex., 3¾" high, 3½" flat head. Gullett Height, 8¼". Gullett Width, 5½".

BEEF COVER, \$17.00 BULL COVER, \$18.50

IN BETWEEN CURTIS ROPER



No. 671 **\$18.00**

Width of Fork, 13". Cantle—3" high, 13" wide, ¾" dish. Horn—No. 2 Mex., 3¼" high, 3½" flat head. Gullett Height, 8¼". Gullett Width, 5½".

BEEF COVER, \$18.00 BULL COVER, \$19.50

IN BETWEEN ROPER

(Round Swell)



No. 670½ **\$21.50**

Width of Fork, 13". Cantle—3" high, 13" wide, ¾" dish. Horn—Mex. Sterling, 2¾" high, 2½" head. Gullett Height, 8¼". Gullett Width, 5½".

BEEF COVER, \$21.50 BULL COVER, \$23.00

IMPROVED ALL AROUND



No. 836

\$16.50

Width of Fork, 13". Cantle—3½" high, 12¼" wide, 1" dish. Horn—No. 2X covered, 3" high, 2½" head. Gullett Height, 8". Gullett Width, 5½".

BEEF COVER, \$16.50 BULL COVER, \$18.00

THE ALL AROUND



No. 573

\$17.50

Width of Fork, 14". Cantle—4½" high, 13" wide, 1½" dish. Horn—No. 8 covered, 3" high, 2" head. Gullett Height, 9". Gullett Width, 5½".

BEEF COVER, \$17.50 BULL COVER, \$19.00

IN BETWEEN ALL AROUND



No. 689

\$22.50

Width of Fork, 13". Cantle—3" high, 13" wide, ¾" dish. Horn—No. 11A Sterling, 2¼" high, 2" head. Gullett Height, 8¼". Gullett Width, 5½".

BEEF COVER, \$22.50 BULL COVER, \$24.00

IMPROVED BOB CROSBY



No. 1001

\$17.00

Width of Fork, 12". Cantle—2½" high, 13" wide, 1" dish. Horn—No. 2 Mex., 2¾" high, 3" head. Gullett Height, 8½". Gullett Width, 5½".

BEEF COVER, \$17.00 BULL COVER, \$18.50

Note—This tree is made regular with double raw-hide cover on horn only.

BOB CROSBY "BULL-DOGGER"



No. 936

\$19.00

Width of Fork, 14". Cantle—2½" high, 12¼" wide, ¾" dish. Horn—No. 8 Mex., 3¼" high, 3½" flat head. Gullett Height, 8½". Gullett Wt., 5½".

BEEF COVER, \$19.00 BULL COVER, \$20.50

Note—This tree is made regular with double raw-hide cover on horn only.

IMPROVED "BULL-DOGGER"



No. 690

\$17.50

Width of Fork, 14". Cantle—3¾" high, 13" wide, 1¼" dish. Horn—No. 2X covered, 3" high, 3" head. Gullett Height, 8½". Gullett Width, 5¼".

BEEF COVER, \$17.50 BULL COVER, \$19.00

THE LOW MOOSE ROPER

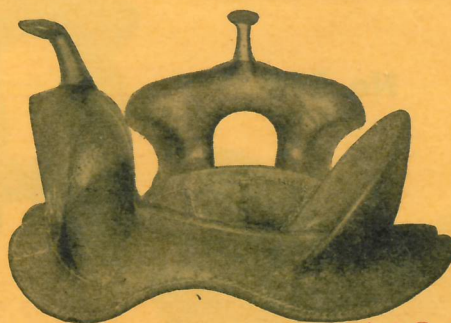


No. 875 **\$17.50**

Width of Fork, 14". Cantle—3½" high, 13" wide, 1" dish. Horn—No. 8 covered, 3" high, 2" head. Gullett Height, 9¼". Gullett Width, 5½".

BEEF COVER, \$17.50 BULL COVER, \$19.00

THE BULL MOOSE

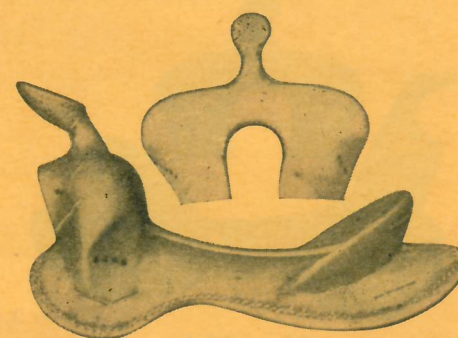


No. 383 **\$19.50**

Width of Fork, 15". Cantle—5" high, 12¾" wide, 1¼" dish. Horn—No. 8 covered, 3" high, 2" head. Gullett Height, 9¼". Gullett Width, 5½".

BEEF COVER, \$19.50 BULL COVER, \$21.00

EXTRA LOW MOOSE ROPER



No. 934 **\$18.00**

Width of Fork, 13". Cantle—2½" high, 13" wide, 1" dish. Horn—No. 8 Mex., 4" high, 2¼"x3¼" flat head, oblong shape. Gullett Ht., 8". Gullett Wt., 5".

BEEF COVER, \$18.00 BULL COVER, \$19.50

THE LOW FREMONT



No. 699 **\$18.50**

Width of Fork, 14". Cantle—3½" high, 13" wide, 1" dish. Horn—No. 8 covered, 2½" high, 2½" head. Gullett Height, 9". Gullett Width, 5½".

BEEF COVER, \$18.50 BULL COVER, \$20.00

THE FREMONT

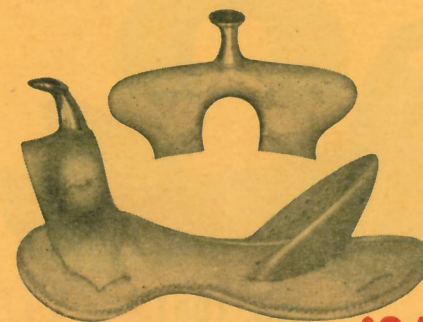


No. 136 **\$19.50**

Width of Fork, 15". Cantle—5" high, 13" wide, 1¼" dish. Horn—No. 8 covered, 3" high, 2" head. Gullett Height, 9¼". Gullett Width, 5½".

BEEF COVER, \$19.50 BULL COVER, \$21.00

THE SAN ANGELO SPECIAL



No. 791 **\$24.50**

Width of Fork, 15". Cantle—4" high, 12¾" wide, 1" dish. Horn—No. 11 Sterling, 3" high, 2½" head. Gullett Height, 8½". Gullett Width, 5".

BEEF COVER, \$24.50 BULL COVER, \$26.00

THE LOW ASSOCIATION



No. 883 **\$16.50**

Width of Fork, 13". Cantle—3" high, 13¼" wide, 1½" dish. Horn—No. 8 covered, 3¼" high, 2¼" head. Gullett Height, 8". Gullett Width, 5¼".

BEEF COVER, \$16.50 BULL COVER, \$18.00

**Yes!!! We Make the New
STANDARD
ASSOCIATION TREE**

**Which Has Been Adopted by All
Committees.**

\$17.50

Specifications are:

No. 1019 Standard Association

Width of Fork, 14". Cantle, 5" high, 13¼" wide, 1½" dish. Horn—No. 8 covered, 3¼" high, 2¼" head. Gullett Ht., 9"; Width, 5¼".

Beef Cover, \$17.50 Bull Cover, \$19.00

THE ASSOCIATION



No. 884 **\$17.50**

Width of Fork, 14". Cantle—5" high, 13¼" wide, 1½" dish. Horn—No. 8 covered, 3" high, 2¼" head. Gullett Height, 8½". Gullett Width, 5½".

BEEF COVER, \$17.50 BULL COVER, \$19.00

THE OREGON ROPER



No. 730 **\$15.50**

Width of Fork, 13". Cantle—3" high, 12½" wide, 1" dish. Horn—No. 8 covered, 3½" high, 2½" head. Gullett Height, 8¼". Gullett Width, 5".

BEEF COVER, \$15.50 BULL COVER, \$17.00

THE WHITE RIVER



No. 144 **\$16.50**

Width of Fork, 14". Cantle—3½" high, 12¼" wide, ¾" dish. Horn—No. 2X covered, 3" high, 3" head. Gullett Height, 8¼". Gullett Width, 5".

BEEF COVER, \$16.50 BULL COVER, \$18.00

THE WHITE RIVER

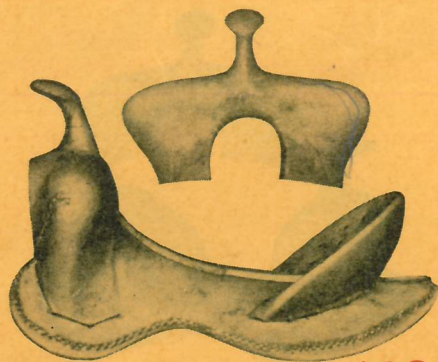


No. 545 **\$14.50**

Width of Fork, 14". Cantle—3" high, 12¼" wide, ¾" dish. Horn—No. 14 covered, 2¾" high, 2¼" head. Gullett Height, 8¾". Gullett Width, 5¼".

BEEF COVER, \$14.50 BULL COVER, \$16.00

THE IMPROVED TIPTON

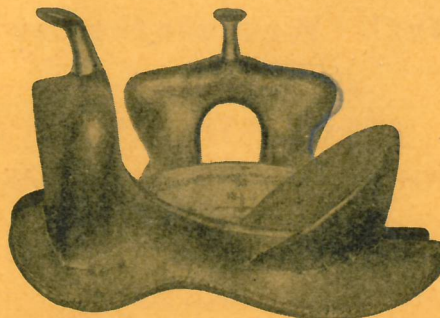


No. 920 **\$16.50**

Width of Fork, 14". Cantle—3¾" high, 12¼" wide, 1½" dish. Horn—No. 8 covered, 3" high, 2¼" head. Gullett Ht., 8¼". Gullett Width, 5¼".

BEEF COVER, \$16.50 BULL COVER, \$18.00

THE TIPTON



No. 280 **\$18.50**

Width of Fork, 14". Cantle—5¾" high, 13" wide, 2½" dish. Horn—No. 8 covered, 3" high, 2" head. Gullett Height, 9¾". Gullett Width, 5¾".

BEEF COVER, \$18.50 BULL COVER, \$20.00

IN BETWEEN TIPTON



No. 678 **\$15.50**

Width of Fork, 13". Cantle—3" high, 13" wide, ¾" dish. Horn—No. 8 covered, 3" high, 2¼" head. Gullett Height, 8¼". Gullett Width, 5¾".

BEEF COVER, \$15.50 BULL COVER, \$17.00

THE IMPROVED WONDER

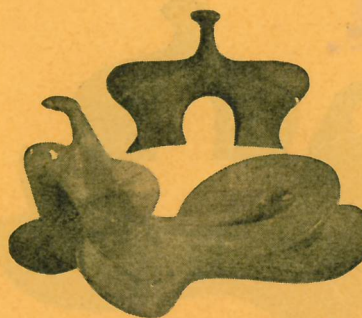


No. 691 **\$22.50**

Width of Fork, 13" Cantle—3" high, 12¾" wide, 1" dish. Horn—No. 11½ Sterling, 2½" high, 2½" head. Gullett Height, 8¼". Gullett Width, 5½".

BEEF COVER, \$22.50 BULL COVER, \$24.00

THE LITTLE WONDER



No. 574 **\$16.50**

Width of Fork, 13". Cantle—3" high, 12¾" wide, 1" dish. Horn—No. 8 covered, 3" high, 2" head. Gullett Height, 7¾". Gullett Width, 5".

BEEF COVER, \$16.50 BULL COVER, \$18.00

THE DENVER SPECIAL



No. 202 **\$18.50**

Width of Fork, 14". Cantle—5" high, 13" wide, 2½" dish. Horn—No. 8 covered, 3" high, 2" head. Gullett Height, 9¾". Gullett Width, 5¾".

BEEF COVER, \$18.50 BULL COVER, \$20.00

THE FITS 'EM ROPER

(High Type)

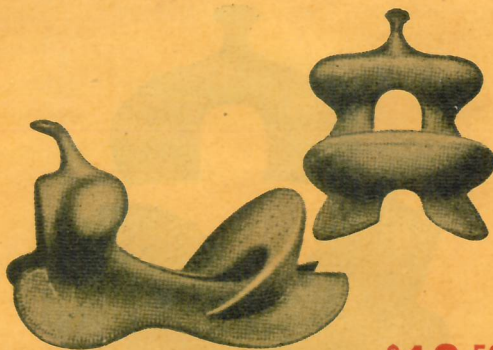


No. 967 **\$22.00**

Width of Fork, 13½". Cantle—4½" high, 13" wide, 1½" dish. Horn—No. 8 Sterling, 2½" high, 1¼" head. Gullett Ht., 9¼". Gullett Width, 5½".

BEEF COVER, \$22.00 BULL COVER, \$23.50

THE FITS 'EM



No. 552½ **\$19.50**

Width of Fork., 14¾". Cantle—5" high, 14" wide, 2" dish. Horn—No. 8 covered, 3" high, 2" head. Gullett Height, 9¼". Gullett Width, 5½".

BEEF COVER, \$19.50 BULL COVER, \$21.00

THE FITS 'EM ROPER

(Low Type)



No. 880 **\$17.00**

Width of Fork, 13½". Cantle—3" high, 13" wide, 1¼" dish. Horn—No. 8 covered, 3" high, 2" head. Gullett Height, 8¾". Gullett Width, 5".

BEEF COVER, \$17.00 BULL COVER, \$18.50

THE FITS 'EM BUFFALO

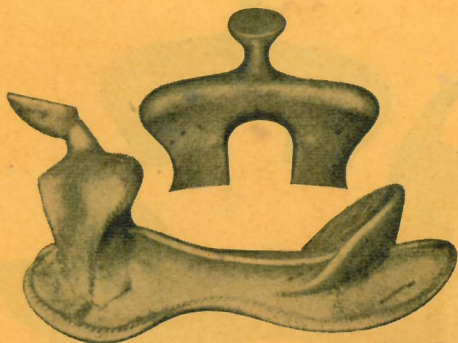


No. 696 **\$17.50**

Width of Fork, 14¾". Cantle—4½" high, 12½" wide, 1½" dish. Horn—No. 5 covered, 2¾" high, 2½" head. Gullett Ht., 8¾". Gullett width, 6".

BEEF COVER, \$17.50 BULL COVER, \$19.00

THE IMPROVED PERFECT FIT



No. 927 **\$19.00**

Width of Fork, 14". Cantle—3" high, 13" wide, 1½" dish. Horn—No. 8 Mex., 3¼" high, 3½" flat head. Gullett Height, 7¾". Gullett Width, 5¾".

BEEF COVER, \$19.00 BULL COVER, \$20.50

THE FITS 'EM BUCKAROO



No. 904 **\$19.50**

Width of Fork, 15". Cantle—4½" high, 13" wide, 2" dish. Horn—No. 8 covered, 2¾" high, 2¾" head. Gullett Height, 9". Gullett Width, 6".

BEEF COVER, \$19.50 BULL COVER, \$21.00

THE BANTAM



No. 698 **\$16.50**

Width of Fork, 12". Cantle—3" high, 12½" wide, 1" dish. Horn—No. 8 Sterling, 2½" high, 2" head. Gullett Height, 8". Gullett Width, 5¼".

BEEF COVER, \$16.50 BULL COVER, \$18.00

THE HALF BREED CONCHO



No. 149½ **\$16.50**

Width of Fork, 14". Cantle—3¾" high, 12¾" wide, ¾" dish. Horn—No. 2 X covered, 2½" high, 2½" head. Gullett Ht., 9". Gullett Width, 5".

BEEF COVER, \$16.50 BULL COVER, \$18.00

THE CARVER



No. 692 **\$16.50**

Width of Swell, 13". Cantle—3" high, 13" wide, 1½" dish. Horn—No. 3 covered, 2¾" high, 2¼" head. Gullett Height, 8½". Gullett Width, 5½".

BEEF COVER, \$16.50 BULL COVER, \$18.00

THE GEO. WEIR



No. 411 **\$16.50**

Width of Fork, 14". Cantle—3" high, 2¾" wide, 1" dish. Horn—No. 8 covered, 3" high, 2¼" head. Gullett Height, 8¾". Gullett Width, 5".

BEEF COVER, \$16.50 BULL COVER, \$18.00

THE WYOMING



No. 675 **\$16.50**

Width of Fork, 14". Cantle—4" high, 13" wide, 1" dish. Horn—No. 8 covered, 3" high, 2¾" head. Gullett Height, 9". Gullett Width, 5½".

BEEF COVER, \$16.50 BULL COVER, \$18.00

THE APACHE



No. 421 **\$14.00**

Width of Fork, 13½". Cantle—3½" high, 12¼" wide, 1" dish. Horn—No. 8 covered, 2¾" high, 2¼" head. Gullett Height, 8¾". Gullett Width, 5¼".

BEEF COVER, \$14.00 BULL COVER, \$15.50

THE DOUGLAS



No. 918 **\$14.50**

Width of Fork, 14". Cantle—3½" high, 12¼" wide, 1½" dish. Horn—No. 8 covered, 3½" high 2¼" head. Gullett Ht., 8½". Gullett Width, 5¾".
BEEF COVER, \$14.50 BULL COVER, \$16.00

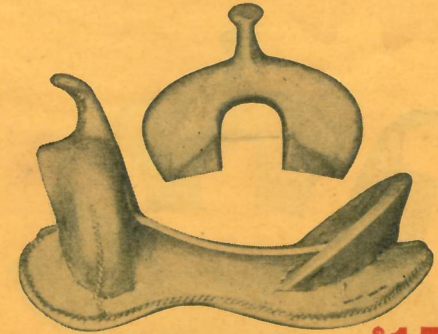
The Ruwart Mfg. Co. are the largest manufacturers of Hi-Grade Saddle Trees in the World.

8 OUT OF 10 SADDLES NOW IN USE ARE MADE ON RUWART TREES.

THE MOST SUCCESSFUL SADDLE MAKERS HAVE BUILT THEIR REPUTATIONS ON RUWART TREES.

THE FOUNDATION OF YOUR SADDLE IS THE TREE — SO WHY NOT USE THE BEST.

OKLAHOMA SPECIAL ROPER



No. 526 **\$15.50**

Width of Fork, 13". Cantle—3½" high, 12½" wide, ¾" dish. Horn—No. 8 covered, 3" high, 2" head. Gullett Height, 8½". Gullett Width, 5".
BEEF COVER, \$15.50 BULL COVER, \$17.00

THE IMPROVED SUCCESS



No. 980 **\$17.50**

Width of Fork, 14". Cantle—4" high, 13" wide, 1½" dish. Horn—No. 8 covered, 3" high, 2½" head. Gullett Height, 8". Gullett Width, 5¾".
BEEF COVER, \$17.50 BULL COVER, \$19.00

THE ROPER



No. 963 **\$13.50**

Width of Fork, 13". Cantle—3¼" high, 12" wide, 1" dish. Horn—No. 8 covered, 3¼" high, 2¼" head. Gullett Height, 8". Gullett Width, 5".
BEEF COVER, \$13.50 BULL COVER, \$15.00

THE ZEPHER TREE



No. 1002 **\$14.50**

Width of Fork, 9". Cantle—4" high, 13" wide, 1½" dish. Horn—No. 2X covered, 3" high, 3¼" head. Gullett Height, 8½". Gullett Width, 6".
BEEF COVER, \$14.50 BULL COVER, \$16.00

THE SHIN BONE ROPER



No. 970 **\$17.50**

Width of Fork, 13". Cantle—3" high, 12¼" wide, 1" dish. Horn—No. 3 Sterling, 2¾" high, 2" head. Gullett Height, 8¼". Gullett Width, 5".

BEEF COVER, \$17.50 BULL COVER, \$19.00

H & W ROPER



No. 712 **\$16.50**

Width of Fork, 12". Cantle—3" high, 12¾" wide, 1" dish. Horn—No. 8 Mex., 4" high, 3½" head. Gullett Height, 8¼". Gullett Width, 5¼".

BEEF COVER, \$16.50 BULL COVER, \$18.00

THE HIGH TYPE ROPER



No. 997 **\$16.00**

Width of Fork, 13". Cantle—4" high, 12¼" wide, ¾" dish. Horn—No. 8 covered, 3" high, 2½" head. Gullett Height, 8½". Gullett Width, 5¼".

BEEF COVER, \$16.00 BULL COVER, \$17.50

THE SID SPECIAL ROPER

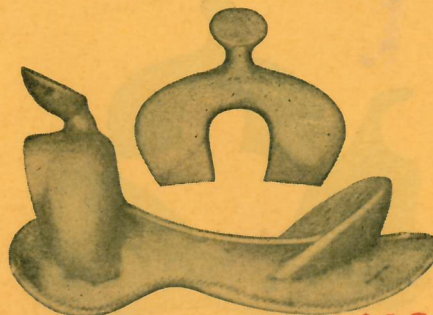


No. 947 **\$19.00**

Width of Fork, 14". Cantle—4" high, 13" wide, 1½" dish. Horn—No. 8 Mex., 4" high, oblong shape, 2¼"x3¼" head. Gullett Ht., 8¼"; Wt., 5½".

BEEF COVER, \$19.00 BULL COVER, \$20.50

ROCKY MOUNTAIN ROPER



No. 913 **\$18.00**

Width of Fork, 13". Cantle—3" high, 12½" wide, 1½" dish. Horn—No. 2X Mex., 3½" high, 3½" head. Gullett Height, 8½". Gullett Width, 6".

BEEF COVER, \$18.00 BULL COVER, \$19.50

THE TEXAS ROPER



No. 837 **\$16.50**

Width of Fork, 13½". Cantle—2¾" high, 12¾" wide, 1" dish. Horn—No. 2X covered, 2½" high, 2¼" head. Gullett Ht., 8¼". Gullett Width, 5½".

BEEF COVER, \$16.50 BULL COVER, \$18.00

**THE DENVER
BRONC**

No. 552

\$19.50



Width of Fork—14 $\frac{3}{4}$ ". Cantle—5" high, 14" wide, 2" dish. Horn—No. 8 covered, 3 $\frac{1}{4}$ " high, 2 $\frac{1}{4}$ " head. Gullett Height, 9 $\frac{1}{4}$ ". Gullett Width, 5 $\frac{1}{2}$ ".
BEEF COVER, \$19.50 BULL COVER, \$21.00

**THE
"SPECIAL CONTEST"**

No. 650

\$18.50



Width of Fork, 14". Cantle—5 $\frac{3}{4}$ " high, 13" wide, 2 $\frac{1}{4}$ " dish. Horn—No. 8 covered, 3 $\frac{1}{4}$ " high, 2" head. Gullett Height, 9 $\frac{3}{4}$ ". Gullett Width, 5 $\frac{1}{2}$ ".
BEEF COVER, \$18.50 BULL COVER, \$20.00

THE "NELSON"

No. 151

\$17.50



Width of Fork, 15". Cantle—5 $\frac{3}{4}$ " high, 13" wide, 1 $\frac{1}{8}$ " dish. Horn—No. 7 covered, 3 $\frac{1}{4}$ " high, 2" head. Gullett Height, 9". Gullett Width, 5 $\frac{1}{2}$ ".
BEEF COVER, \$19.00

THE "JIM DANDY"

No. 457

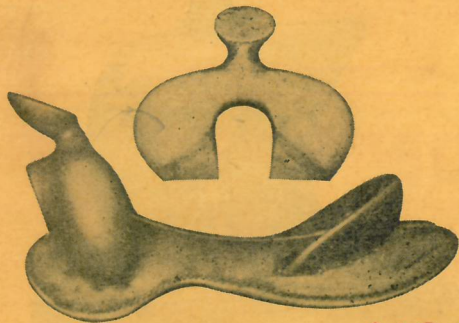
\$18.50



Width of Fork, 15". Cantle—5 $\frac{1}{2}$ " high, 14" wide, 1 $\frac{1}{2}$ " dish. Horn—No. 8 covered, 3 $\frac{1}{4}$ " high, 2" head. Gullett Height, 9". Gullett Width, 5 $\frac{1}{2}$ ".
BEEF COVER, \$18.50 BULL COVER, \$20.00

THE RUWART MANUFACTURING COMPANY, DENVER, COLORADO, U. S. A.

THE LOW CURTIS ROPER



No. 932 **\$18.00**

Width of Fork, 13". Cantle—2½" high, 13" wide, 1" dish. Horn—No. 2 Mex., 3¾" high, 3½" head. Gullett Height, 8". Gullett Width, 5".

BEEF COVER, \$18.00 BULL COVER, \$19.50

THE L. R. ROPER



No. 798 **\$15.50**

Width of Fork, 12". Cantle—3" high, 13" wide, 1" dish. Horn—No. 8 covered, 3" high, 2¼" head. Gullett Height, 8½". Gullett Width, 5½".

BEEF COVER, \$15.50 BULL COVER, \$17.00

THE L. D. ROPER



No. 879 **\$15.50**

Width of Fork, 12". Cantle—2½" high, 13" wide, 1" dish. Horn—No. 8 covered, 3" high, 2¼" head. Gullett Height, 7". Gullett Width, 5".

BEEF COVER, \$15.50 BULL COVER, \$17.00

THE YOAKUM ROPER



No. 935 **\$15.50**

Width of Fork, 12". Cantle—3½" high, 13" wide, 1" dish. Horn—No. 8 covered, 3¼" high, 2½" head. Gullett Height, 8¾". Gullett Width, 5¾".

BEEF COVER, \$15.50 BULL COVER, \$17.00

THE IMPROVED PARKER



No. 652 **\$16.50**

Width of Fork, 13". Cantle—2½" high, 12¼" wide, ¾" dish. Horn—No. 8 covered, 3" high, 2¼" head. Gullett Height, 8". Gullett Width, 6".

BEEF COVER, \$16.50 BULL COVER, \$18.00

THE PARKER



No. 962 **\$15.50**

Width of Fork, 13". Cantle—2½" high, 12½" wide, 1" dish. Horn—No. 8 covered, 3" high, 2¼" head. Gullett Height, 8¾". Gullett Width, 6".

BEEF COVER, \$15.50 BULL COVER, \$17.00

THE BULL DOG

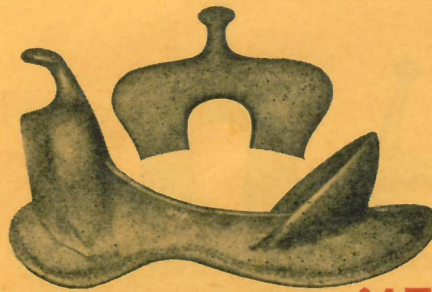


No. 992 **\$16.50**

Width of Fork, 13". Cantle—3" high, 12½" wide, 1" dish. Horn—No. 2X covered, 2¾" high, 2½" head. Gullett Height, 9". Gullett Width, 5".

BEEF COVER, \$16.50 BULL COVER, \$18.00

THE ELLENSBURG



No. 551 **\$17.50**

Width of Fork, 14". Cantle—4" high, 13" wide, 1½" dish. Horn—No. 8 covered, 3" high, 2¼" head. Gullett Height, 9". Gullett Width, 6".

BEEF COVER, \$17.50 BULL COVER, \$19.00

THE IMPROVED ELLENSBURG



No. 674 **\$17.50**

Width of Fork, 14". Cantle—4" high, 13¼" wide, 1½" dish. Horn—No. 8 covered, 3" high, 2¾" head. Gullett Height, 8". Gullett Width, 5½".

BEEF COVER, \$17.50 BULL COVER, \$19.00

THE ROUND-UP



No. 505 **\$17.50**

Width of Fork, 14". Cantle—3" high, 13" wide, 1½" dish. Horn—No. 8 covered, 3" high, 2¼" head. Gullett Height, 9". Gullett Width, 5¼".

BEEF COVER, \$19.00

THE MAVERICK



No. 575 **\$18.50**

Width of Fork, 14". Cantle—3½" high, 12½" wide, 1½" dish. Horn—No. 8 Sterling, 2½" high, 1¾" head. Gullett Height, 8". Gullett Width, 5¼".

BEEF COVER, \$18.50 BULL COVER, \$20.00

THE ARIZONA SPECIAL



No. 921 **\$14.50**

Width of Fork, 14". Cantle—3½" high, 12" wide, 1¼" dish. Horn—No. 8 covered, 2¾" high, 2¼" head. Gullett Height, 8". Gullett Width, 5¼".

BEEF COVER, \$14.50 BULL COVER, \$16.00

IMPROVED TRICK RIDER

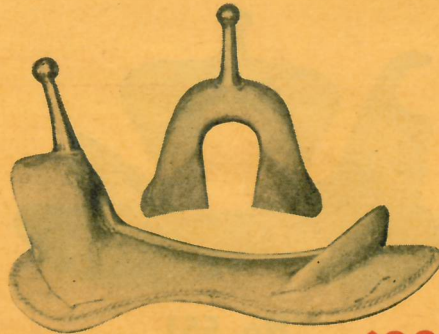


No. 1007 **\$14.50**

Width of Fork, 9". Cantle—2" high, 11" wide, $\frac{5}{8}$ " dish. Horn—No. 9 covered, 5" high, 1 $\frac{1}{4}$ " head. Gullett Height, 7 $\frac{1}{2}$ ". Gullett Width, 5 $\frac{1}{2}$ ".

BEEF COVER, \$14.50 BULL COVER, \$16.00

THE TRICK RIDER



No. 567 **\$20.50**

Width of Fork, 9". Cantle—2" high, 10 $\frac{1}{2}$ " wide, $\frac{3}{4}$ " dish. Horn—No. 6 ball top Sterling, 5" high. Gullett Height, 8 $\frac{1}{4}$ ". Gullett Width, 5 $\frac{1}{4}$ ".

BEEF COVER, \$20.50 BULL COVER, \$22.00

THE STREAMLINE

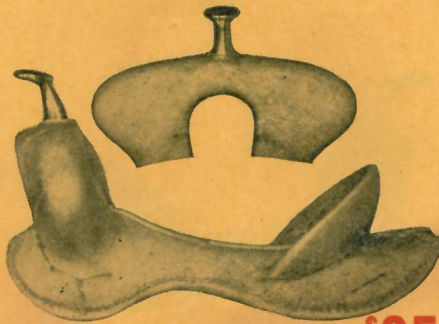


No. 1000 **\$17.00**

Width of Fork, 12". Cantle—2 $\frac{3}{4}$ " high, 12 $\frac{3}{4}$ " wide, $\frac{3}{4}$ " dish with large roll. Horn—No. 3 egg shaped oval top, 3" high, 2"x3 $\frac{1}{4}$ " head. Gullett Height, 8". Gullett Width, 5".

BEEF COVER, \$17.00 BULL COVER, \$18.50

THE LLANO RIVER



No. 324 **\$25.50**

Width of Fork, 16". Cantle—3 $\frac{1}{2}$ " high, 12 $\frac{3}{4}$ " wide, 1 $\frac{1}{2}$ " dish. Horn—No. 11 Sterling, 2 $\frac{1}{2}$ " high, 2 $\frac{1}{8}$ " head. Gullett Height, 9". Gullett Width, 6".

BEEF COVER, \$25.50 BULL COVER, \$27.00

THE OLD MEXICO



No. 3 **\$17.00**

Width of Fork, 8 $\frac{1}{2}$ ". Cantle—3 $\frac{1}{2}$ " high, 13" wide, 1 $\frac{1}{4}$ " dish. Horn—No. 8 Mex, 3 $\frac{3}{4}$ " high, 3 $\frac{3}{4}$ " head. Gullett Height, 8 $\frac{3}{4}$ ". Gullett Width, 4 $\frac{3}{4}$ ".

BEEF COVER, \$17.00 BULL COVER, \$18.50

THE DUCK BILL ROPER



No. 572 **\$16.00**

Width of Fork, 12". Cantle—2 $\frac{1}{2}$ " high, 12 $\frac{1}{4}$ " wide, 1" dish. Horn—No. 1 Duck Bill, 2 $\frac{3}{4}$ " high, 4" head. Gullett Ht., 8 $\frac{1}{2}$ ". Gullett Width, 5".

BEEF COVER, \$16.00 BULL COVER, \$17.50

THE "BRONCO BUSTER"

No. 640

\$20.50



Width of Fork, 16". Cantle—5¾" high, 13" wide, 2½" dish. Horn—No. 8 covered, 3" high, 2" head. Gullett Height, 9¼". Gullett Width, 5¼".
BEEF COVER, \$20.50 BULL COVER, \$22.00

THE "DENVER CITIZEN"

No. 116

\$14.50



Width of Fork, 10". Cantle—4¼" high, 11¼" wide, 5/8" dish. Horn—No. 8 Sterling, 2½" high, 1¾" head. Gullett Height, 8". Gullett Width, 4¼".
KIP COVER, \$14.50 BEEF COVER, \$16.00

THE "COLORADO SPECIAL"

No. 649

\$18.50



Width of Fork, 14". Cantle—5" high, 13" wide, 2" dish. Horn—No. 8 covered, 3" high, 2" head. Gullett Height, 9¼". Gullett Width, 5¼".
BEEF COVER, \$18.50 BULL COVER, \$20.00

THE "BRONC"

No. 647

\$18.50



Width of Fork, 14". Cantle—4" high, 13" wide, 2" dish. Horn—No. 8 covered, 3" high, 2" head. Gullett Height, 9". Gullett Width, 5¼".
BEEF COVER, \$18.50 BULL COVER, \$20.00

THE "MILLER SPECIAL"

No. 52

\$18.50



Width of Fork, 14". Cante—5¼" high, 14" wide, 2¼" dish. Horn—No. 8 covered, 3¼" high, 2¼" head. Gullett Height, 9¼". Gullett Width, 5¼".
BEEF COVER, \$18.50 BULL COVER, \$20.00

THE "JEWEL"

No. 291

\$8.50



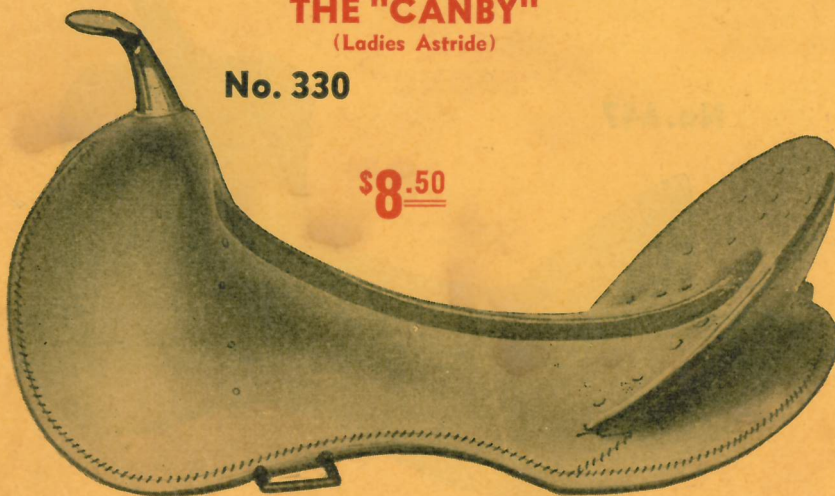
Width of Fork, 12". Cante—4¼" high, 11" wide, 1⅞" dish. Horn—No. 14 covered, 2½" high, 2" head. Gullett Height, 8". Gullett Width, 4¼".
HOG COVER, \$8.50 KIP COVER, \$10.00

THE "CANBY"

(Ladies Astride)

No. 330

\$8.50



Width of Fork, 7¼". Cante—3½" high, 12¾" wide, 1" dish. Horn—No. 12 Nickel, 2½" high, 1¾" head. Gullett Height, 8". Gullett Width, 5½".
CANVAS COVER, \$8.50 HOG COVER, \$10.50

THE BILLINGS

No. 12

\$20.50



Width of Fork, 12". Cante—5" high, 12½" wide, ¾" dish. Horn—No. 10 Sterling, 3" high, 2" head. Gullett Height, 9". Gullett Width, 5¼".
BEEF COVER, \$20.50 BULL COVER, \$22.00

THE VISALIA YOUTH

No. 127



\$13.50

Width of Fork, 13". Cantle—4" high, 11" wide, 5/8" dish. Horn—No. 5 covered, 3" high, 2" head. Gullett Height, 8 1/2". Gullett Width, 4".

KIP COVER, \$13.50

BEEF COVER, \$15.00

THE FAMOUS RUWART VISALIA TREE HAS WITHSTOOD THE TEST OF TIME THROUGHOUT THE HISTORY OF SADDLE-MAKING. OTHER TREES HAVE COME AND GONE, BUT THE "VISALIA" IS STILL A POPULAR FAVORITE. HERE ARE FOUR VISALIA STYLES—EACH IN A CLASS BY ITSELF.

HALF BREED VISALIA

No. 134

\$16.50



Width of Fork, 14". Cantle—3 1/2" high, 12 1/4" wide, 5/8" dish. Horn—No. 8 covered, 2 3/4" high, 2" head. Gullett Height, 9 1/2". Gullett Width, 5 1/4".

BEEF COVER, \$16.50

BULL COVER, \$18.00

THE LOW CANTLE VISALIA (Roper Style)

No. 218

\$16.50



Width of Fork, 14". Cantle—4" high, 12 1/4" wide, 3/4" dish. Horn—No. 8 covered, 3" high, 2" head. Gullett Height, 9 1/2". Gullett Width, 5 3/4".

BEEF COVER, \$16.50

BULL COVER, \$18.00

THE REGULAR "VISALIA"

No. 103

\$14.50

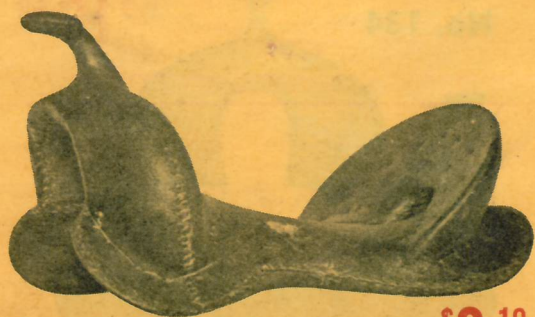


Width of Fork, 12". Cantle—5" high, 12 1/2" wide, 3/4" dish. Horn—No. 7 covered, 3 1/2" high, 2" head. Gullett Height, 9 1/2". Gullett Width, 5 1/4".

BEEF COVER, \$14.50

BULL COVER, \$16.00

THE CANADA BOY



No. 945

\$8.10

Width of Fork, 12". Cantle—3½" high, 11¼" wide, 1" dish. Horn—No. 14 covered, 2¾" high, 2" head. Gullett Ht., 7¼". Gullett Width, 4¼".

HOG COVER, \$8.10

KIP COVER, \$9.60

THE TEXAS BOY



No. 733

\$8.10

Width of Fork, 12". Cantle—3" high, 10¾" wide, 1" dish. Horn—No. 14 covered, 2¾" high, 2" head. Gullett Height, 7½". Gullett Width, 4¼".

HOG COVER, \$8.10

KIP COVER, \$9.60

THE WESTERN BOY



No. 890

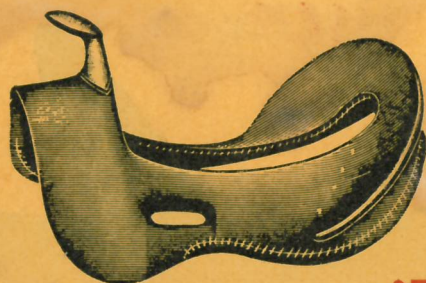
\$7.50

Width of Fork, 10". Cantle—4" high, 10¼" wide, ¾" dish. Horn—No. 14 covered, 2½" high, 2" head. Gullett Height, 7¼". Gullett Width, 4".

HOG COVER, \$7.50

KIP COVER, \$9.00

THE BOY SCOUT



No. 597

\$5.50

Flat Fork—No swell. Cantle—2¼" high, 10" wide, ½" dish. Horn—No. 10A Nickel, 2½" high, 1¾" head. Gullett Height, 6½". Gullett Width, 4¼".

CANVAS COVER, \$5.50

HOG COVER, \$6.50

THE OMAHA BOY

(Low Type)



No. 259½

\$7.50

Width of Fork, 10". Cantle—3" high, 10" wide, ¾" dish. Horn—No. 10A covered, 2½" high, 1¾" head. Gullett Height, 7". Gullett Width, 4".

HOG COVER, \$7.50

KIP COVER, \$9.00

THE OMAHA BOY

(High Type)



No. 259

\$10.00

Width of Fork, 10". Cantle—3¾" high, 10" wide, ¾" dish. Horn—No. 12 Nickel, 2¾" high, 1¾" head. Gullett Height, 7". Gullett Width, 4".

HOG COVER, \$10.00

KIP COVER \$11.50

THE LITTLE WONDER BOY



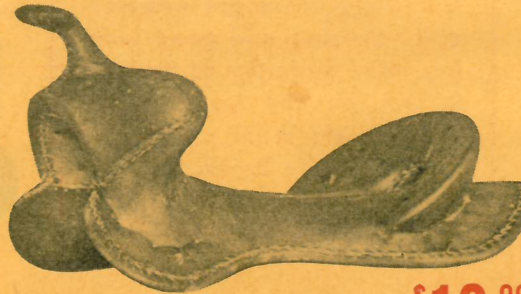
No. 574½ **\$9.00**

Width of Fork, 12". Cantle, 3" high, 11¼" wide, 1¼" dish. Horn—No. 14 covered, 2¾" high, 2" head. Gullett Height, 7". Gullett Width, 4½".

HOG COVER, \$9.00 BEEF COVER, \$12.00

THE FITS 'EM BOY

(Low Type)



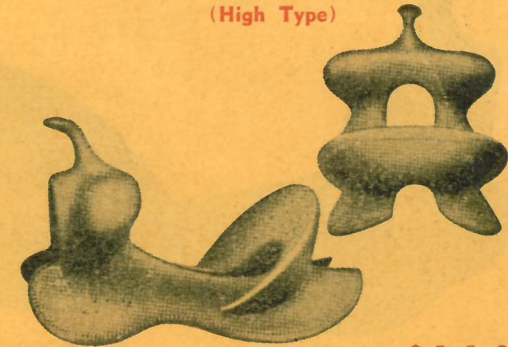
No. 882 **\$10.00**

Width of Fork, 12". Cantle, 2½" high, 10¾" wide, 1" dish. Horn—No. 14 covered, 3" high, 2" head. Gullett Height, 7". Gullett Width, 4½".

HOG COVER, \$10.00 BEEF COVER, \$13.00

THE FITS 'EM BOY

(High Type)



No. 552½ **\$11.00**

Width of Fork, 13". Cantle, 4" high, 11½" wide, 1¼" dish. Horn—No. 14 covered, 2¾" high, 2" head. Gullett Height, 7¼". Gullett Width, 4¼".

HOG COVER, \$11.00 BEEF COVER, \$14.00

THE ROPER BOY

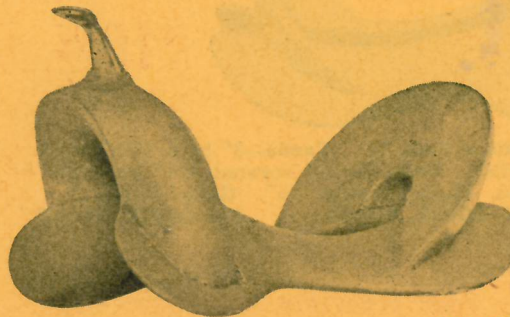


No. 730½ **\$9.00**

Width of Fork, 10". Cantle, 3" high, 10¾" wide, 1" dish. Horn—No. 14 covered, 2¾" high, 2" head. Gullett Height, 7". Gullett Width, 4¼".

HOG COVER, \$9.00 BEEF COVER, \$12.00

THE DENVER BOY

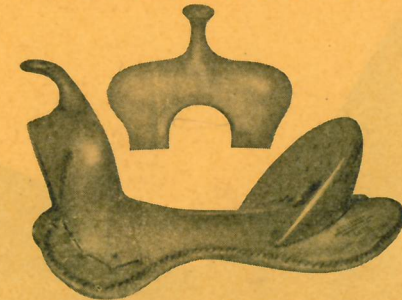


No. 908 **\$6.50**

Width of Fork, 10". Cantle, 4" high, 10¼" wide, ½" dish. Horn—No. 10A Nickel, 2½" high, 1¾" head. Gullett Height, 7¼". Gullett Width, 4".

CANVAS COVER, \$6.50 HOG COVER, \$8.00

THE CONTEST BOY



No. 1014 **\$9.00**

Width of Fork, 11". Cantle, 4" high, 11¼" wide, 1¼" dish. Horn—No. 14 covered, 2½" high, 2" head. Gullett Height, 8". Gullett Width, 4½".

HOG COVER, \$9.00 BEEF COVER, \$12.00

THE HUMDINGER (DUDE)



No. 423

\$10.00

Width of Fork, 14". Cantle—4" high, 12½" wide, 1" dish. Horn—No. 14 covered, 2¾" high, 2" head. Gullett Height, 8¾". Gullett Width, 5¼".

HOG COVER, \$10.00

KIP COVER, \$11.50

Our Dude Trees are comfortable, durable and good looking. The majority of Saddles in use on the larger Dude Ranches are made on Ruwart Dude Trees.

THE CANADA (DUDE)



No. 943

\$9.50

Width of Fork, 12". Cantle—4½" high, 11½" wide, 1" dish. Horn—No. 14 covered, 2¾" high, 2" head. Gullett Height, 7½". Gullett Width, 4½".

HOG COVER, \$9.50

KIP COVER, \$11.00

THE RUWART SPECIAL (DUDE)

No. 896



\$10.00

Width of Fork, 12". Cantle—3" high, 12½" wide, 1" dish. Horn—No. 14 covered, 2¾" high, 2¼" head. Gullett Height, 7½". Gullett Width, 5".

HOG COVER, \$10.00

KIP COVER, \$11.50

Dude Trees are made light—but strong and are useful—not only for Dude Ranches—but for Riding Academies, Summer and Winter Resorts, and numerous other places where light saddles are used.

THE LONE STAR (DUDE)



No. 547 \$9.00

Width of Fork 13". Cantle—3" high, 11½" wide, 1" dish. Horn—No. 14 covered, 3" high, 2" head. Gullett Height, 8½". Gullett Width, 5".

HOG COVER, \$9.00

KIP COVER, \$10.50

THE LONE STAR (DUDE)



No. 852

\$9.00

Width of Fork, 12". Cantle—4¼" high, 12¼" wide, 1" dish. Horn—No. 14 covered, 2¾" high, 2" head. Gullett Height, 8½". Gullett Width, 5".

HOG COVER, \$9.00

KIP COVER, \$10.50

THE TEXAS YOUTH



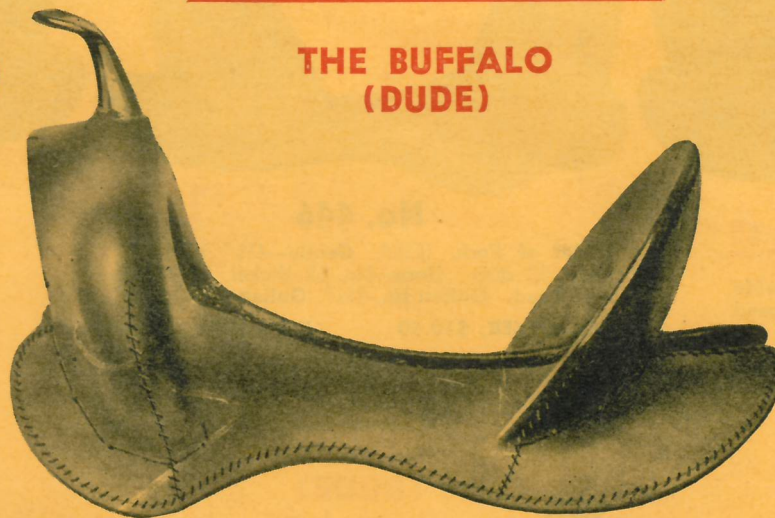
No. 853 **\$8.50**

Width of Fork, 12". Cantle—3¼" high, 10¼" wide, ¾" dish. Horn—No. 10A Nickel, 2½" high, 2" head. Gullett Height, 7". Gullett Width, 4¼".

HOG COVER, \$8.50 KIP COVER, \$10.00

DUDE TREES WILL BE MADE WITH BEEF OR BULL COVERS —IF DESIRED. PRICES CHEERFULLY QUOTED UPON REQUEST.

THE BUFFALO (DUDE)

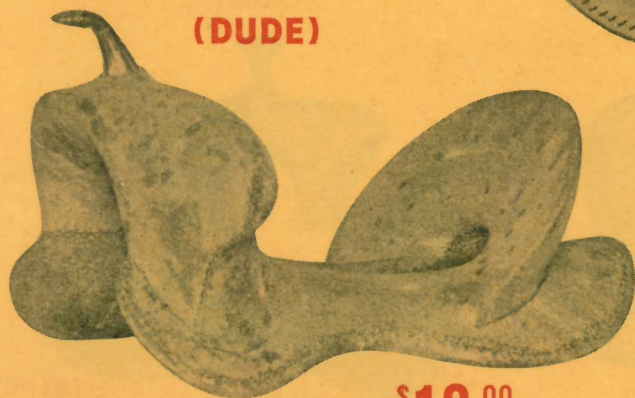


No. 215 **\$10.50**

Width of Fork, 14½". Cantle—5" high, 12½" wide, 1" dish. Horn—No. 8 covered, 3" high, 2" head. Gullett Height, 9¼". Gullett Width, 5½".

HOG COVER, \$10.50 KIP COVER, \$12.00

THE IMPROVED BUFFALO-MOOSE (DUDE)



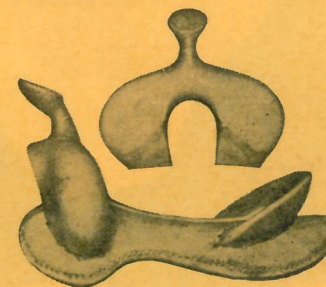
No. 767 **\$13.00**

Width of Fork, 14½". Cantle—5" high, 12½" wide, 1¼" dish. Horn—No. 12 Nickel, 2¾" high, 1¼" head. Gullett Ht., 9¼". Gullett Width, 5¾".

HOG COVER, \$13.00 KIP COVER, \$14.50

OUR LONG LIST OF SATISFIED CUSTOMERS IS AMPLE PROOF THAT WE KNOW HOW TO MAKE SADDLE TREES.

The Low Curtis Youth



No. 932½ **\$11.50**

Width of Fork, 12". Cantle—2½" high, 11" wide, 1" dish. Horn—No. 14 Mex., 3" high, 2¾" head. Gullett Height, 6¾". Gullett Width, 4½".

Hog Cover, \$11.50 Kip Cover, \$13.00

THE ROPER (DUDE)

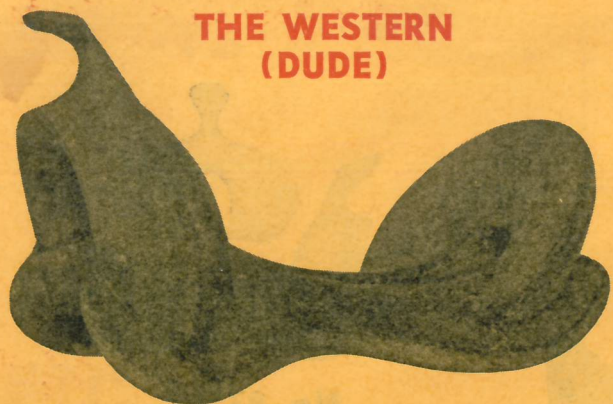


No. 420 **\$10.00**

Width of Fork, 14". Cantle—3" high, 12½" wide, 1" dish. Horn—No. 14 covered, 2¾" high, 2¼" head. Gullett Height, 8¼". Gullett Width, 5¼".

HOG COVER, \$10.00 KIP COVER, \$11.50

**THE WESTERN
(DUDE)**



No. 859

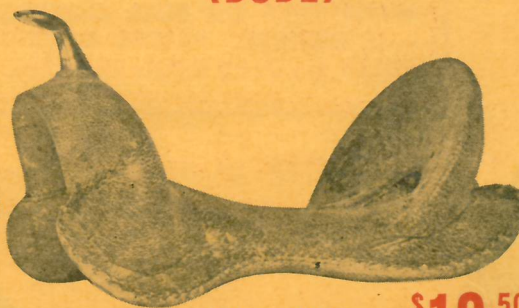
\$8.50

Width of Fork, 12". Cante—4" high, 12½" wide, 1" dish. Horn—No. 14 covered, 3" high, 2" head. Gullett Height, 8½". Gullett Width, 5".

HOG COVER, \$8.50

KIP COVER, \$10.00

**THE BUSTER
(DUDE)**



No. 446

\$10.50

Width of Fork, 11½". Cante—4½" high, 11" wide, 1" dish. Horn—No. 12 Nickel, 2¾" high, 1¾" head. Gullett Ht., 7½". Gullett Width, 4½".

HOG COVER, \$10.50

KIP COVER, \$12.00

**THE
LOW CITIZEN
(DUDE)**



No. 815

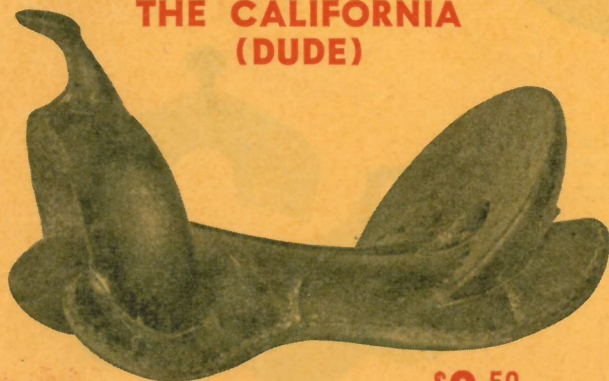
\$9.00

Width of Fork, 10". Cante—3¼" high, 11" wide, ¾" dish. Horn—No. 14 covered, 2¾" high, 2" head. Gullett Height, 8". Gullett Width, 4¾".

HOG COVER, \$9.00

KIP COVER, \$10.50

**THE CALIFORNIA
(DUDE)**



No. 855

\$9.50

Width of Fork, 11½". Cante—4½" high, 11¾" wide, 1" dish. Horn—No. 14 covered, 3" high, 2" head. Gullett Height, 8¼". Gullett Width, 5½".

HOG COVER, \$9.50

KIP COVER, \$11.00

**THE LINCOLN
(DUDE)**

(Undercut Swell)



No. 708

\$10.00

Width of Fork, 14". Cante—4½" high, 12" wide, 1" dish. Horn—No. 14 covered, 2¾" high, 2" head. Gullett Height, 8½". Gullett Width, 5".

HOG COVER, \$10.00

KIP COVER, \$11.50

**THE IMPROVED
(DUDE)**



No. 996

\$9.50

Width of Fork, 12". Cante—3" high, 12½" wide, 1" dish. Horn—No. 14 covered, 3" high, 2" head. Gullett Height, 7¾". Gullett Width, 4¾".

HOG COVER, \$9.50

KIP COVER, \$11.00



No. 2 Mexican Horn

Covered, Short Neck, 3" Head.
PLAIN, \$2.50 COVERED, \$3.50



No. 2 Mexican Horn

Covered, Short Neck, 3½" Head
PLAIN, \$2.50 COVERED, \$3.50



No. 8 Mexican Horn

Covered, Long Neck, 3" Head
PLAIN, \$2.50 COVERED, \$3.50



No. 2 Mexican Horn

Covered, Short Neck, 3½" Head
PLAIN, \$2.50 COVERED, \$3.50

3 1/2" H 2-R mex

3 1/2" H 2-R mex



No. 14 Covered Horn

2¾" high, 2", 2¼" or 2½" head.
PLAIN, \$1.30 COVERED, \$1.80



No. 2 Covered Horn

2¼" high, 2", 2¼", 2½" or 3" head.
No. 2X Covered Horn—2½" high, 2", 2¼", 2½" or 3" head.
PLAIN, \$1.40 COVERED, \$2.00

BRAIDED HORNS
 (And How We Braid 'Em)



No. 7 Covered Horn

¾" high, 2" head.
Plain \$1.30
Covered 1.80



No. 5 Covered Horn

¾" high, 2", 2¼" or 2½" head.
Plain \$1.30
Covered 1.80



No. 8 Covered Horn

3" high, 2", 2¼", 2½" or 3" head.
PLAIN, \$1.30 COVERED, \$1.80



No. 11 Covered Horn

3½" high, 2", 2¼" or 2½" head.
PLAIN, \$1.30 COVERED, \$1.80



Cut Showing Braided Horn

On Any Tree \$2.00

Our number 1 Duck Bill Horn, shown on page 15 of this catalog, can be furnished on any tree for \$1.00 extra. Size, 2¾" high with 3½", 4", 4½" or 5" Head.
Plain, \$2.50 Rawhide Covered, \$3.00

Any Mexican Covered Horns shown on this page will be put on trees (not showing same) for \$1.50 extra.

We also make any size or style Mexican Horn, from 2½" head up to the Dinner Plate size. Prices quoted according to size ordered.



(Medium Neck)

No. 7 Sterling Horn

3 1/4" high, 2" head

Each \$4.00

The No. 6 Ball Top Sterling Horn

Shown on our No. 567 Trick Riding Tree, page 15, is made especially for trick riding saddles. It is made either 5 or 6 inches high, with ample neck to give the rider a good hand grip.

Each \$6.00

The No. 6R Ball Top Sterling Horn

Has a removable neck and can be unscrewed from the tree. 5 inches high, only.

Each \$9.00



(Light Neck)

No. 12 Sterling Horn

2 3/4" high, 1 3/4" head

Each \$3.00



(Thick Neck)

No. 10 Sterling Horn

2 3/4" high, 2" head

Each \$4.00



(Medium Neck)

No. 3 Sterling Horn

2 1/2" high, 2" head

Each \$4.00



(Button Top)

No. 11 Sterling Horn

2 1/2" high, 2 1/8" head.

No. 11A Sterling Horn—2 1/4" high, 1 7/8" or 2 1/4" head.

No. 11 1/2 Sterling Horn—2 1/2" high, 2 1/2" head.

Each \$6.00



(Medium Neck)

No. 8 Sterling Horn

2 1/2" high, 1 3/4" head

Each \$4.00



(Thick Neck)

No. 15 Mexican Sterling Horn

2 3/4" high, 2 1/2" or 3" head

Each \$6.00



(Thick Neck)

No. 2 Sterling Horn

2" high, 2" or 2 1/4" head
No. 2X Sterling Horn—2 1/2" high, 2" or 2 1/4" head.

Each \$4.00

No. 2X with 2 1/2" or 3" head

Each \$5.00

(Note: The No. 11, 11A and 11 1/2 Sterling Horns are furnished with Smooth Edge only.)

Any Horns Shown in this Catalog Can Easily Be Adjusted and Made To Fit All Old Trees.

IMPORTANT

All Horns illustrated on this page can be furnished in Brass or Nickel Plate at the following prices:

No. 7—Brass or Nickel Plate \$3.00
 No. 12—Brass or Nickel Plate 2.50
 No. 10—Brass or Nickel Plate 3.00
 No. 3—Brass or Nickel Plate 3.00

No. 11—Brass or Nickel Plate \$4.00
 No. 8—Brass or Nickel Plate 2.50
 No. 15—Brass or Nickel Plate 4.00
 No. 2 or No. 2X—Brass or Nickel Plate 3.00

No. 2X—With 2 1/2" or 3" Head—Brass or Nickel Plate . . . 3.50

THE RUWART MANUFACTURING COMPANY, DENVER, COLORADO, U. S. A.



Ruwart's Common Horse Pack Tree

\$48.00
DOZEN

No. 228

Length of Bars, 20". Hard Wood Crosses. Bars riveted to Crosses. Painted Finish.

Ruwart's Ole Hagen Pack Tree
(Government or Springerville Pattern)



No. 813

\$9.50
EACH

Length of Bars, 20". Hard Wood Crosses, Ironed on 2 sides. Bars riveted to Crosses. Oiled finish.



Ruwart's Humane Pack Tree

No. 248
\$60.00
DOZEN

Length of Bars, 21". Hard Wood Crosses. Bars riveted to Crosses. Bars grooved for Straps. Painted finish.



Ruwart's Low Horn Horse Pack Tree

\$12.00
EACH

No. 224

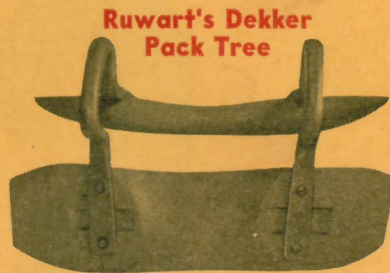
Length of Bars, 20". Entire Tree Beef Covered, with Irons over Hide and Dees in Ends of Irons.



Ruwart's Common Burro Pack Tree

No. 227
\$42.00
DOZEN

Length of Bars, 18". Hard Wood Crosses. Bars riveted to Crosses. Painted finish.

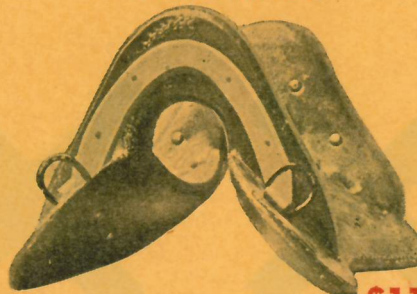


Ruwart's Dekker Pack Tree

\$9.00
EACH

No. 816

Length of Bars, 19½". Solid Bronze Cross Irons. Bars riveted to Cross Irons. Painted finish.



Ruwart's Low Horn Burro Pack Tree

\$11.00
EACH

No. 224½

Length of Bars, 18". Entire Tree Beef covered, with Irons over Hide and Dees in Ends of Irons.



Ruwart's Forest Service Pack Tree
(California Pattern)

\$66.00
DOZEN

No. 693

Length of Bars, 21". Hard Wood Crosses. Bars riveted to Crosses. Bars grooved for Straps. Painted finish.

Saddler's Stitching Horse

Complete
As Shown
\$20.00
EACH



No. 1
Jaws 4" wide, 17½" high.
Full sweep, turned legs.

Cincha Hook
(Malleable Iron)



No. 256

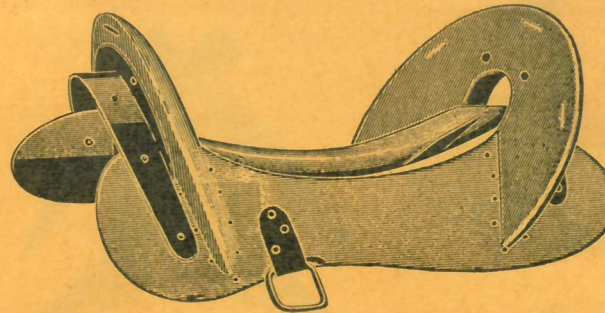
\$3.50
DOZEN

Standard Army McClelland Tree
(With One-Piece Angle and Face Plate Iron)



No. 410

Sizes, 11", 11½" or 12" Gov't. Measure or Sizes 14", 14½" or 15" Regular Measure.
No Cover, \$3.00 Canvas Cover, \$4.00 Hog Cover, \$6.00 Kip Cover, \$7.50
Beef Cover, \$9.00



**Malleable Cart
Tree Iron Tips**



Cart Tree
No. 253
\$36.00
DOZEN

Bow, 3". Bars, 5½"x13". Bow grooved for Chains.
Plain, per doz., \$36.00 With Tips, per doz., \$48.00

No. 253
\$3.00
DOZEN



Harness Stitching Horse

Complete
As Shown
\$10.00
EACH



No. 2
Jaws 4" wide, 17" high.
¾ Sweep—Turned Legs.

Cincha Hook
(Wood, Bolted)



No. 258
\$3.50
DOZEN

Cross Pack Irons



\$3.60
DOZEN

No. 257

1½" thick, ¾" wide, 4¾" long. Pack Tree Crosses
are unbreakable when riveted to these Irons.

Discontinued

THINGS YOU SHOULD KNOW

Men's Trees are made on any size seats—including 15 inches. For sizes ordered larger than 15 inches—add \$1.00 for each one-half inch.

Boys' and Youths' Trees are made on any size seats including 12½ inches. For sizes ordered larger than 12½ inches—add \$1.00 for each one-half inch.

The prices quoted under each tree include any width of fork up to the size listed. For larger swells than listed—add \$1.00 per inch for Bull and Beef covered trees—or 70c per inch for Kip covered trees—or 50c per inch for Hog covered trees—or 30c per inch for Canvas covered trees.

We use 4 grades of rawhide coverings on our saddle trees, namely—Hog, Kip, Beef and Bull. Hog is the cheapest—Bull is the highest. Any tree will be furnished with any rawhide cover—at a differential of \$1.50 for each grade. For example: A tree listed with Hog Cover, priced at \$12.00 would cost \$13.50 with Kip cover—or \$15.00 with Beef cover—or \$16.50 with Bull cover.

Mexican Horns will be put on any trees, not showing same, for \$1.50 extra.

Sterling, Nickel or Brass Horns will be put on any trees, not showing same, for the prices listed under the horn selected.

"Komfort Kantles" will be built on any tree for \$1.00 extra.

We will make any changes desired on the trees we list and will make any special tree to order. For changes and special orders—a reasonable extra charge will be made. Prices cheerfully quoted upon request.

TERMS

To Firms having a satisfactory credit rating, we will ship on open account, invoice payable net in 30 days—or 2% discount if paid in 10 days. We ship C. O. D. to Firms having no credit rating.

All previous prices are hereby withdrawn. All prices are subject to change without notice. All Invoices are payable at par in Denver. All orders are accepted subject to strikes, floods, fires or other causes beyond our control. We are not responsible for loss or damage to shipments after same are delivered in good order to Transportation Companies. All prices quoted are F. O. B. Denver.

For reference, we refer you to American National Bank, Denver.

THE RUWART MANUFACTURING COMPANY, DENVER, COLORADO, U. S. A.

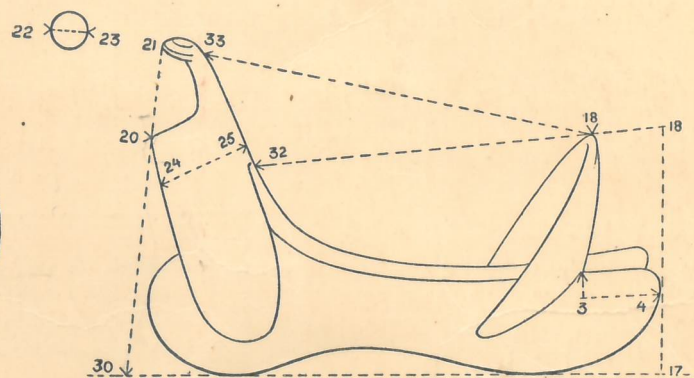
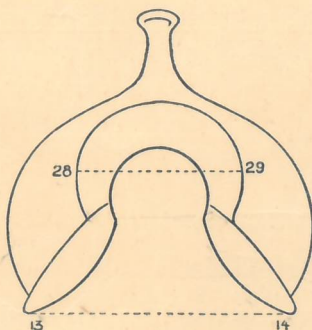
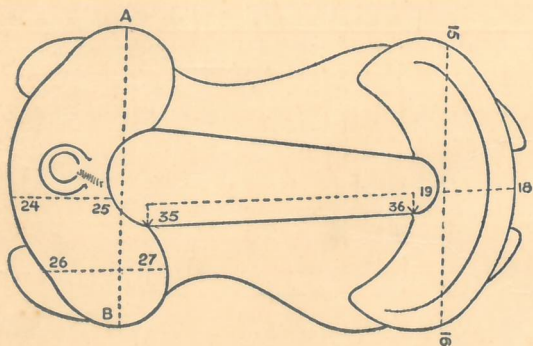
INDEX

No.	NAME	Page
573	All Around Tree	7
421	Apache Tree	12
682	Amarillo Roper Tree	6
921	Arizona Special Tree	16
884	Association Tree	9
883	Association (Low) Tree	9
1019	Association (New Standard) Tree	9
698	Bantam Tree	12
12	Billings Tree	20
597	Boy Scout Tree	22
647	Bronc Tree	19
640	Bronco Buster Tree	19
215	Buffalo (Dude) Tree	25
992	Bull Dog Tree	16
936	Bulldogger Tree	7
383	Bull Moose Tree	8
227	Burro Pack Tree (Common)	29
224½	Burro Pack Tree (Low Horn)	29
446	Buster (Dude) Tree	26
855	California (Dude) Tree	26
945	Canada Boy Tree	22
943	Canada (Dude) Tree	24
330	Canby (Ladies Astride) Tree	20
253	Cart Tree	30
253	Cart Tree Iron Tips	30
692	Carver Tree	12
258	Cinch Hooks	30
649	Colorado Special Tree	19
1014	Contest Boy Tree	23
257	Cross Pack Irons	30
816	Dekker Pack Tree	29
908	Denver Boy Tree	23
552	Denver Bronc Tree	18
116	Denver Citizen Tree	19
202	Denver Special Tree	10
918	Douglas Tree	13
572	Duck Bill Roper Tree	15
551	Ellensburg Tree	16
934	Extra Low Moose Roper Tree	8
552½	Fits 'Em Tree	11
552½	Fits 'Em Boy (High Type) Tree	23
882	Fits 'Em Boy (Low Type) Tree	23
904	Fits 'Em Buckaroo Tree	11
696	Fits 'Em Buffalo Tree	11
967	Fits 'Em Roper (High Type) Tree	11
880	Fits 'Em Roper (Low Type) Tree	11
693	Forest Service Pack Tree	29

No.	NAME	Page
136	Fremont Tree	8
411	Geo. Weir Tree	12
149½	Half Breed Concho Tree	12
2	Harness Stitching Horse	30
1009	High Fits 'Em Komfort Kante Tree	5
997	High Type Roper Tree	14
228	Horse Pack Tree (Common)	29
224	Horse Pack Tree (Low Horn)	29
248	Humane Pack Tree	29
423	Humdinger (Dude) Tree	24
712	H. & W. Roper Tree	14
836	Improved All Around Tree	7
1001	Improved Bob Crosby Tree	7
767	Improved Buffalo Moose (Dude) Tree	25
690	Improved Bulldogger Tree	7
996	Improved (Dude) Tree	26
674	Improved Ellensburg Tree	16
652	Improved Parker Tree	17
927	Improved Perfect Fit Tree	11
980	Improved Success Tree	13
920	Improved Tipton Tree	10
691	Improved Wonder Tree	10
689	In Between All Around Tree	7
671	In Between Curtis Roper Tree	6
1008	In Between Fits' Em Komfort Kante Tree	5
670	In Between Roper Tree	6
670½	In Between Roper Tree	6
1006	In Between Roper Komfort Kante Tree	5
678	In Between Tipton Tree	10
291	Jewel Tree	20
457	Jim Dandy Tree	18
1004	Jim Dandy Komfort Kante Tree	4
879	L. D. Roper Tree	17
1013	L. D. Roper Komfort Kante Tree	5
708	Lincoln (Dude) Tree	26
574	Little Wonder Tree	10
574½	Little Wonder Boy Tree	23
324	Llano River Tree	15
547	Lone Star (Dude) Tree	24
852	Lone Star (Dude) Tree	24
1010	Low Bronc Komfort Kante Tree	5
815	Low Citizen (Dude) Tree	26
932	Low Curtis Roper Tree	17
932½	Low Curtis Youth Tree	25
699	Low Fremont Tree	8
875	Low Moose Roper Tree	8
798	L. R. Roper Tree	17

No.	NAME	Page
1005	Low Roper Komfort Kante Tree	4
575	Maverick Tree	16
52	Miller Special Tree	20
121	Nelson Tree	18
526	Oklahoma Special Roper Tree	13
3	Old Mexico Tree	15
813	Ole Hagen Pack Tree	29
259	Omaha Boy (High Type) Tree	22
259½	Omaha Boy (Low Type) Tree	22
730	Oregon Roper Tree	9
962	Parker Tree	17
1012	Perfection Roper Komfort Kante Tree	4
913	Rocky Mountain Roper Tree	14
963	Roper Tree	13
730½	Roper Boy Tree	23
420	Roper (Dude) Tree	25
505	Round Up Tree	16
896	Ruwart Special (Dude) Tree	24
	Saddle Horns	27-28
1	Saddler's Stitching Horse	30
791	San Angelo Special Tree	8
970	Shin Bone Roper Tree	14
1003	Sid Special Komfort Kante Tree	4
947	Sid Special Roper Tree	14
650	Special Contest Tree	18
410	Standard Army McClellan Tree	30
1000	Streamline Tree	15
733	Texas Boy Tree	22
837	Texas Roper Tree	14
853	Texas Youth Tree	25
280	Tipton Tree	10
567	Trick Rider Tree	15
1007	Trick Rider (Improved) Tree	15
1011	Universal Komfort Kante Tree	4
959	Van Horn Roper Tree	6
658	Van Horn Special Roper Tree	6
134	Visalia (Half Breed) Tree	21
218	Visalia (Low Cantle) Tree	21
103	Visalia (Regular) Tree	21
127	Visalia (Youth) Tree	21
890	Western Boy Tree	22
859	Western (Dude) Tree	26
144	White River Tree	9
545	White River Tree	9
675	Wyoming Tree	12
935	Yoakum Roper Tree	17
1002	Zephyr Tree	13

THE SADDLE MAKERS SUPPLY HOUSE OF THE WEST



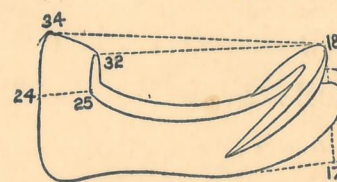
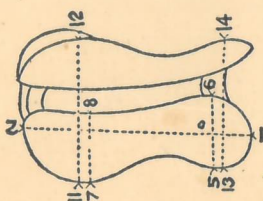
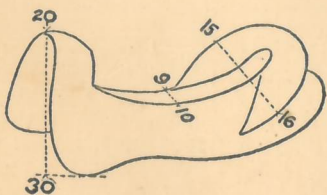
KEY OR CODE USED IN THE MEASUREMENT OF SADDLE TREES

- 1 to 2—BARS, Length of.
- 3 to 4— " Length of Behind Cantle.
- 5 to 6— " Width across under Horn.
- 7 to 8— " Width across under Cantle.
- 9 to 10— " Width between bars.
- 11 to 12— " Spread, out to out under Cantle.
- 13 to 14— " Spread, out to out under Horn.
- 15 to 16—CANTLE, Width of, across Cantle.
- 17 to 18— " Height, from floor to top of Cantle.
- 19 to 18— " From HOLE to top of Cantle.

CANTLE CHANGES. Do you want
BEVEL, OVAL or
PLAIN?
" " Do you want
DISHED or
STRAIGHT?

- 20 to 21—HORN, from top of Gullet to top of Horn.
- 22 to 23—CAP or HEAD, Size wanted.
- 24 to 25—FORK, Thickness of, under Horn.
- 26 to 27— " Thickness of fork showing BULGE.
- 28 to 29— " Width of Gullet in front.

- 30 to 20—FORK, Measurement from top of Gullet to floor.
- A to B— " Width across, showing Swell or Bulge.
- 32 to 18—MEASUREMENT, in SEAT for Texas and California Trees.
- 33 to 18— " from back of top of Horn to top of Cantle.
- 34 to 18— " Somersets, Parks, etc. Overall, highest point on pommel.
- 35 to 36— " Government, seat from Bottom of Cantle to Horn.



GENUINE



NAVAJO



BLANKETS



THERE IS NO SUBSTITUTE FOR A GENUINE NAVAJO SADDLE BLANKET. ALL WOOL — HAND - MADE — EASY ON A HORSE—GOOD LOOKING—EVERLASTING

OUR AGENTS KEEP US SUPPLIED AT ALL TIMES WITH A SELECT STOCK OF THESE FINE BLANKETS. EVERY NAVAJO SOLD BY US IS GUARANTEED TO BE GENUINE AND HAND-MADE BY A NAVAJO INDIAN.

Handwritten notes in the right margin: 5228, 4728, 2x00, 4798, 1954, 4561, 4825.

- Single Navajo Saddle Blankets, Weight about 2½ lbs.—Sizes 28-29-30 inches square..... ^{EACH} \$5.50
- Single (Select) Navajo Saddle Blankets, Weight about 3 lbs.—Sizes 28-29-30 inches square..... 6.50
- Single (Select) Navajo Saddle Blankets, Weight about 3½ to 4 lbs.—Sizes 28-29-30 inches square.. 7.50

We can also furnish Fancy Double Navajo Saddle Blankets weighing 5, 6, 7 and 8 pounds each at \$2.70 per pound. No two Genuine Navajo Blankets are alike. All designs are different.

RUWART MANUFACTURING COMPANY

(Wholesale Only)

DENVER, U. S. A.

THE SADDLE MAKERS SUPPLY HOUSE OF THE WEST