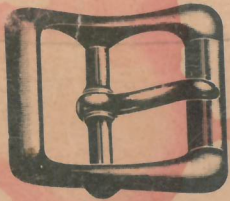
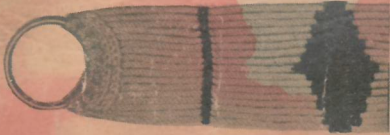


STANDARD SADDLE TREE CO., INC.



P.O. BOX 609
VERNAL, UTAH 84078
U.S.A.

TELEPHONE: 789-2346
AREA CODE 801

CATALOG 6791



Standard Saddle Tree Co.



September 1, 1976

TO OUR FRIENDS THE SADDLE MAKERS:

1949 - 1976 (Twenty Seven years of progress)

We do not use the term PROGRESS lightly. Review, if you will, the Saddle Trees being made 27 years ago - much the same styles but to different specifications, and giving a better fit to the horse and the rider.

One of the big reasons for this is you have listened to the ideas and wants of your customers and have passed this information on to us. We in turn have listened to you and tried to make these ideas into reality.

We emphasize again, when you want a new Saddle Tree developed, let us work with you. That will always be our policy and privilege.

This Catalogue gives only an idea of what we are making in some of the most popular styles. If you do not see here exactly what you are wanting, do not be afraid to order any other style you know of. We make practically anything in the Saddle Tree line.

Another thing - we have specialized in the handling of hardware and other items going into the making of Saddles. When you order a Saddle Tree, why not order everything else you are needing to complete the Saddle?

We will always give your order our best attention, and we want you to know that we will work with you in every way to make your job easier and more rewarding.

Westernly yours,

STANDARD SADDLE TREE CO.

C. Laurence Fox
C. Laurence Fox

STANDARD SADDLE TREE CO. P.O. BOX 609 Vernal, Utah 84078 (801) 789-2346

TERMS:

1% 10 Net 30 -- All invoices are due 30 days from date of shipment.
All companies that are over 60 days past due will automatically be placed
on C.O.D.

FREIGHT POLICY:

1. All items are F.O.B. Vernal, Utah
2. Orders will be shipped by carrier chosen by Standard Saddle Tree
Company unless specified by the customer.

BACK ORDERS:

If an item is temporarily out of stock, it will be placed on back order.
Unless notice of cancellation is received from the customer, we will ship
back orders as soon as possible.

PRICES:

All prices in this catalog are subject to change without notice.

CLAIMS:

1. Claims for shortages in shipment or error in billing should be made to
our office within ten (10) days.
2. Claims for loss or damage in transit should be filed directly with the
carrier.

RETURNED GOODS:

1. Written permission must be received for return of merchandise for
any reason.
2. Transportation charges must be prepaid.
3. All goods made to special customer specifications are not returnable.
4. All goods returned must be in resaleable condition.
5. A 10% restocking charge will be charged for all returned items that
were shipped correctly.

MINIMUM ORDER:

All orders under \$25.00 will have a \$2.50 handling charge added.



Saddle Tree Information

Saddle trees have been around as long as saddles have, but surprisingly enough, few newcomers to the business know that much about them. The following information is written for all novices new to the art of saddlemaking as well as for all you pros. If anything has been left out that would be helpful to any others please let us know!

Note: We make custom saddle trees; so we'll make anything you want. The following is only to be used as a guide!

SEAT LENGTH

The seat lengths of most adult saddle trees today are 15", 15 1/2", & 16"; however, we'll make any length you want!

FRONTS

There are so many different styles of fronts on the market today that it's hard to categorize them all. It seems that every area has its certain "favorites" and every saddle maker wants his trees made a certain way. In an effort to simplify things, most saddle trees can be placed in one or more of six different groups.

- A. Roping Saddle Trees - Most roping style saddle trees are rounded with little or no swell. Their main purpose is either to enable a rider to dismount quickly or prevent a thrown rope from getting hung up on the front. An average width is 13" and gullet height is 8". Some examples of a roping tree are S. F. Bowman and Bob Crosby.
- B. All-Around Saddle Trees - Most saddles used for ranch work and pleasure riding fall in the all-around group. This style has more swell and leg-cut in the front and usually measures either 13" or 14" wide. Usually the gullet height is 8". Some examples would be either a Little Wonder, Ellensburg, or Arizona Roper.
- C. Associations - This style of saddle tree was mostly designed for bronc riding. It's characterized by a large amount of swell in the front and no leg-cut. An average width is 14" and the gullet is 9" high. Some examples are the Standard Association and the Oregon Association.
- D. Barrel Racers - This style is cut down to lighten the tree for barrel racing. Any style of saddle tree can be cut down to make a barrel racing tree. Some examples are either a Little Wonder Barrel Racer or a M J Barrel Racer. An average width is either 12" or 13" and the gullet is usually 7 1/2" high.
- E. Cutting Horse Styles - This style was designed for cutting horse competition. An average width is 13" and the gullet height is usually 8". Our most popular example is the Dina Special.

- F. Equitation Saddle Trees - These are used primarily in horse shows and parades. The Equitation Saddle Tree is built with the balance and posture of the rider in mind. The best example is the Bowman Cutter which usually comes with a #1 3" Mexican Horn. The average front is 14" wide with a gullet height of 8".

BARS

We have three different styles of bars available; they are:

- A. Regular - Designed with a double stirrup leather groove on the bottom of the bar.
- B. Arizona - A heavier bar recommended for steer roping and heavy usage. These bars are made with a single stirrup leather groove on the bottom of the bar giving extra strength, but still enabling the stirrup leather to fit well.
- C. Arab-Flare Bars - Any style of tree can be made with shorter bars to fit Arabian horses. These bars come with either single or double stirrup leather grooves.

In addition to fitting a horse well, all of the above bars are usually built up in the front of the seat with a small riser. This small triangler-shaped block gives a more stream-lined effect, but can be removed to create a level ride or balanced ride tree.

GULLET WIDTHS & ANGLES

There are generally four different gullet widths to fit the withers and backs of different size horses.

1. Regular 5 3/4"
2. Semi-Quarter Horse 6"
3. Quarter-Horse 6 1/2"
4. Full Quarter-Horse 6 1/2"

All widths are built on the same angle, except the full quarter-horse which has a flatter angle to the bars.

CANTLES

There are many different types of cantles being used today, but the more common styles are:

1. Regular or Oval - is the most widely used cantle today. It usually comes 3" high.
2. Comfort - is squared up on the corners with a slight dip in the center. It gives more support for the rider and usually comes 3" high.
3. Round-Top Comfort - gives the support of the comfort cantle, but is more oval in shape.
4. Shovel - was the style used at the turn of the century. It comes with either a straight or beveled edge, is usually 4 to 6 inches high and no wider than 12 1/2".

The Dish in a cantle will usually vary in size from none to 2"; usually in 1/4 inch increments.

HORNS

In selecting a horn for your tree please use the guide on pages 32 to 35. For specific purposes we recommend:

1. Roping - The Dally horns and Post Dally horns are best.
2. All-Around - Whatever you or your customer needs or prefers.
3. Cutting - We recommend the Dally 1 3/4", stood straight up, because it is easier to grab on to and is what most of our customers prefer.
4. Associations - No horn!
5. Barrel Racers - Most barrel racers want a low, lightweight horn, so we recommend the #1, 2 1/4" cap horn.
6. Equitation - Equitation riders need a horn that is low so it doesn't get in the way. The Mexican 3" horn is regularly used for this purpose.

COVERINGS

All of our trees are covered with genuine bullhide, the strongest and heaviest available. Before shipping to you, every tree is thoroughly dried and sealed in a special varnish. All bullhide-covered trees have a 5-year unconditional guarantee.

If you have any additional questions that haven't been answered by the preceding information, please feel free to write and ask us. We will be more than happy to answer them to the best of our ability!

CURRENT SADDLE TREE STYLES

The following is a list of the more common names of saddle trees used today that are available from STANDARD SADDLE TREE COMPANY. It is not a complete list because several styles may be known by other names. But no matter what you or your customer's preference may be, we will make it for you! Regular specifications can be varied anyway to meet your desires.

<u>No.</u>	<u>NAME</u>	<u>No.</u>	<u>NAME</u>
100	Old Mexico X	153	Old Frost Association
101	Bob Crosby X	154	Perry Ivory X
102	Wilson Roper X	155	Pony Express X
103	New South West Roper	156	Pro Trophy
104	F - L Roper X	157	Rocky Mountain Roper X
105	Quarter-Horse Roper X	158	Rodeo Association X
106	New Bowman Roper X	159	Round-Up Roper
107	Allen Roper X	161	Santa Fe X
108	S. F. Bowman Roper X	162	Jim Shoulders
109	All Around X	164	Sioux Roper
110	Arabian	165	Slick Fork Roper X
111	Arbuckle Roper	166	South West Roper X
112	Arizona Roper X	167	Stockman Cutting Horse
113	Ashcraft	168	T. M. Roper X
120	Bowman Cutter X	170	Texas Roper
122	Carter Special	171	37
123	Century 21	172	3/b Visalia X
125	Contest Association X	173	Tipton X
126	Curtis Roper	175	Trick Tree
127	Jim Dandy	176	Wade X
128	Dina Special X	177	Weatherly X
129	Ellensburg X	178	Fred Wyble
131	Freemont Roper	179	White River X
133	Jess Tong	180	DR Roper X
134	Oregon Association	181	Arizona T. M. Roper
136	Form Fitter X	182	Leg Cut T. M. Roper
137	Low Bronc	183	Van Core Bowman X
138	Bow Model B	184	Rowell Bowman
139	Professional Roper X	185	Del Rio
140	Denney Hunt	187	Dean Oliver
141	M J Barrel Racer X	188	War Bronc
143	Klenda Roper	189	Rau Special
144	Lieuallen X	190	Taylor Roper
145	Lima Cutting Horse	191	Tucson Roper X
146	Little Wonder Barrel Racer	200	Parker X
147	Low Association X	201	Sid Special X
148	Low Ivory X	202	Standard Association
149	Low Tipton	203	Tare Roper
150	Meacham Roper	204	Rudy Roper
151	Miniature X	205	Improved P.I. Roper

<u>No.</u>	<u>NAME</u>	<u>No.</u>	<u>NAME</u>
206	Low Down Roper <input checked="" type="checkbox"/>	224	Improved T. M. Roper
207	Extra Low Moose Cutting Horse <input checked="" type="checkbox"/>	225	Squaw Tree <input checked="" type="checkbox"/>
208	In-Between Roper <input checked="" type="checkbox"/>	226	Improved Round-Up
209	Van Horn Roper <input checked="" type="checkbox"/>	227	New Sioux Roper
210	Little Wonder <input checked="" type="checkbox"/>	228	Tic Toc Roper
211	Fits Better <input checked="" type="checkbox"/>	229	War Bonnet Roper
212	Fits Better Roper <input checked="" type="checkbox"/>	230	Butch Cassidy <input checked="" type="checkbox"/>
214	San Angelo Cutting Horse	231	Steer Roper
215	Crown Roper	232	Craig Roper <input checked="" type="checkbox"/>
216	Black Hawk Roper <input checked="" type="checkbox"/>	233	Bowden Roper <input checked="" type="checkbox"/> All Around <input checked="" type="checkbox"/>
217	Elbo Cutting Horse <input checked="" type="checkbox"/>	234	Elbo Barrel Racer
218	Sody Special	235	Story Low Moose <input checked="" type="checkbox"/>
219	New Arbuckle Roper		McCellan <input checked="" type="checkbox"/>
220	Kernal Coon Kutter (KCK) <input checked="" type="checkbox"/>		Side Saddle
221	Leg Cut Low Down Roper <input checked="" type="checkbox"/>		Peruvian
222	Joe Gray		Arabian Costume Tree
223	California Roper <input checked="" type="checkbox"/>		

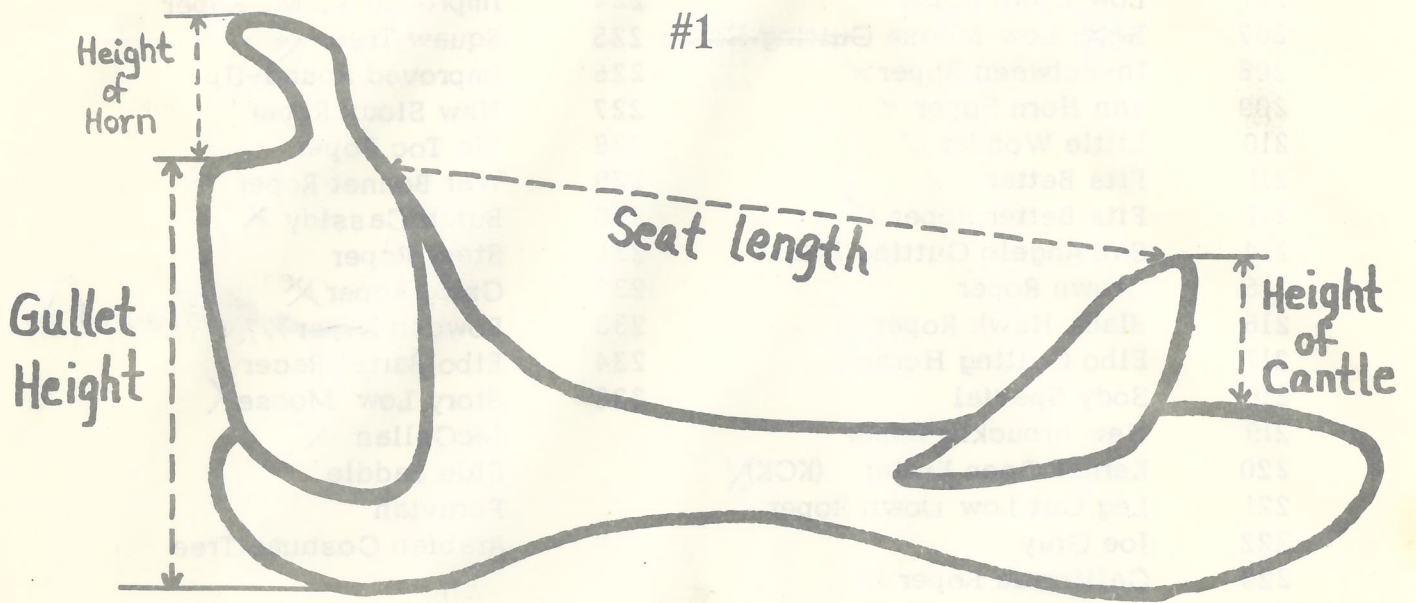
Saddle Tree Ordering and Measurement

In ordering a saddle tree, we need the following information to make sure the tree we send is the one you ordered!

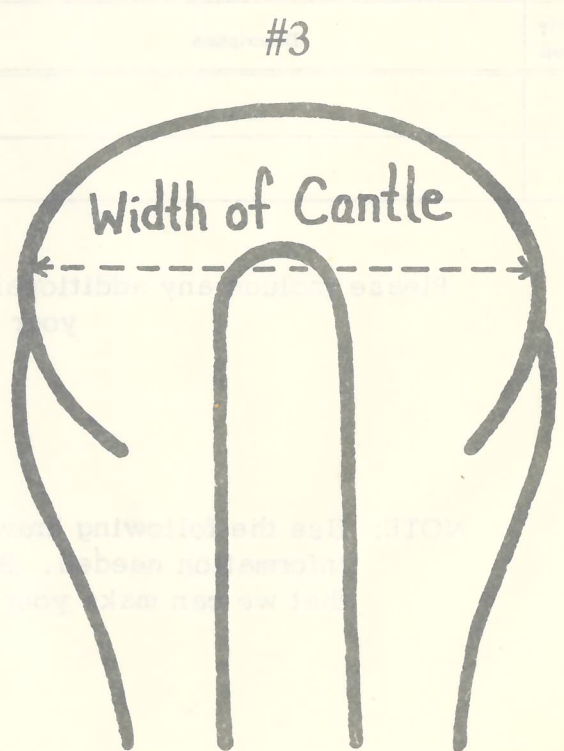
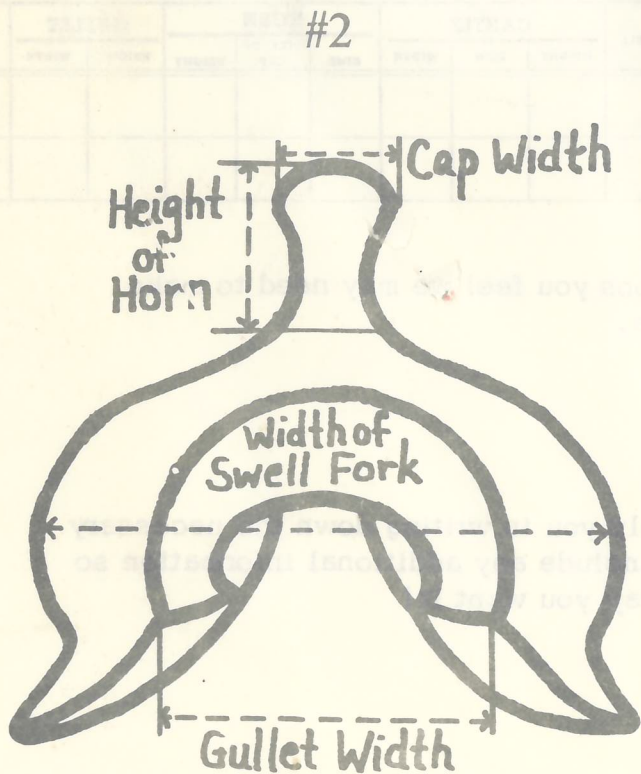
Quantity Ordered	Description	SEAT	SWELL	CANTLE			HORN			GULLET		Cover
				HEIGHT	DISH	WIDTH	KIND	SIZE OF CAP	HEIGHT	HEIGHT	WIDTH	

Please include any additional instructions you feel we may need to make your saddle tree.

NOTE: Use the following drawings to help you in writing down the necessary information needed. Be sure to include any additional information so that we can make your tree the way you want it!



Drawings of Saddle Trees

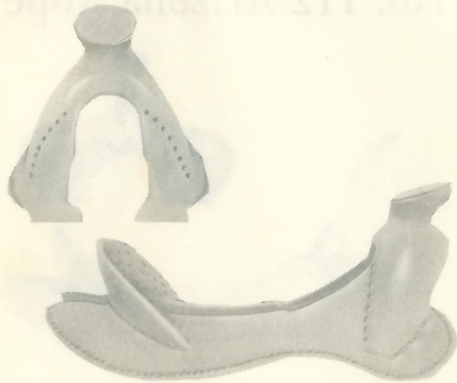




CURRENT SADDLE TREE STYLES

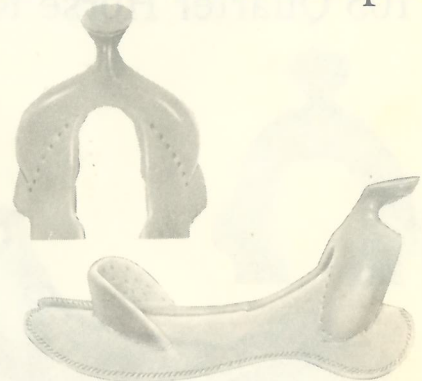
The following pictures and information are to give you an idea of the various styles and measurements of saddle trees. REMEMBER, saddle trees can be made practically any way to meet your specifications!

No. 100 Old Mexico



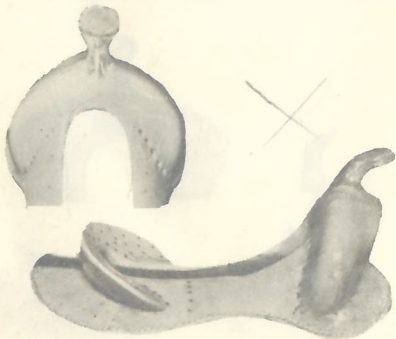
Horn: Old Mex, 4" Cap, 3" high
Swell: 9" wide
Cantle: 4" high, 13" wide, 1 1/2" dish
Gullet: 8" high

No. 102 Wilson Roper



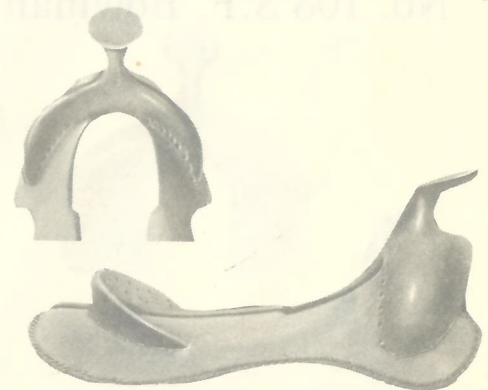
Horn: #2R Mex, 3" Cap, 3 1/2" high
Swell: 11" wide
Cantle: 3" high, Comfort Style, 13" wide, 1 1/2" dish
Gullet: 8" high

No. 101 Bob Crosby



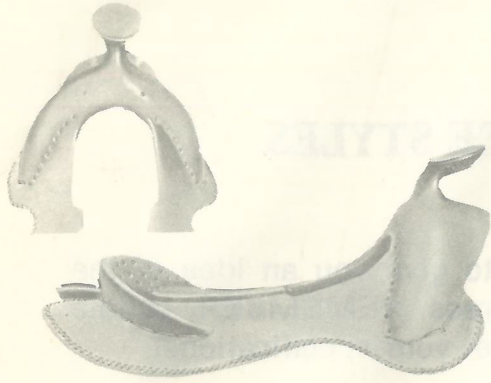
Horn: #2R Mex, 3" Cap, 3 1/2" high
Swell: 13" wide
Cantle: 3" high, 13" wide, 1" dish
Gullet: 8" high

No. 103 New South West Roper



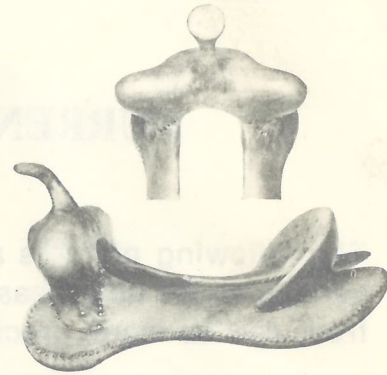
Horn: #2, 3" Cap, 3 1/2" high
Swell: 10" wide
Cantle: 3" high, 13" wide, 1" dish
Gullet: 7 1/2" high

No. 104 F-L Roper



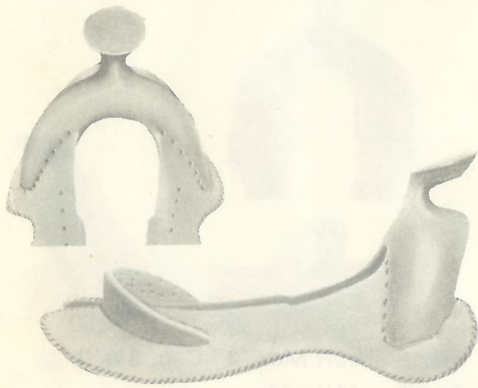
Horn: #1 Mex, 3'' Cap, 3'' high
Swell: 10'' wide
Cantle: 3'' high, 13'' wide, 1'' dish
Gullet: 7 $\frac{3}{4}$ '' high

No. 109 All Around



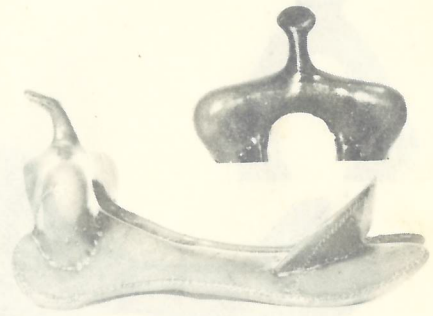
Horn: Dally, 2 $\frac{1}{4}$ '' Cap, 3 $\frac{3}{4}$ '' high
Swell: 13'' wide
Cantle: 3 $\frac{1}{2}$ '' high, 13'' wide, 1 $\frac{1}{2}$ '' dish
Gullet: 8'' high

No. 105 Quarter Horse Roper



Horn: Mex, 3 $\frac{1}{2}$ '' Cap, 3 $\frac{1}{2}$ '' high
Swell: 10'' wide
Cantle: 3'' high, 13'' wide, 1'' dish
Gullet: 8'' high

No. 112 Arizona Roper



Horn: Dally, 2 $\frac{1}{4}$ Cap, 3 $\frac{3}{4}$ '' high
Swell: 14'' wide
Cantle: 3 $\frac{1}{2}$ '' high, 13'' wide, 1 $\frac{1}{2}$ '' dish
Gullet: 8'' high

ARIZONA BARS

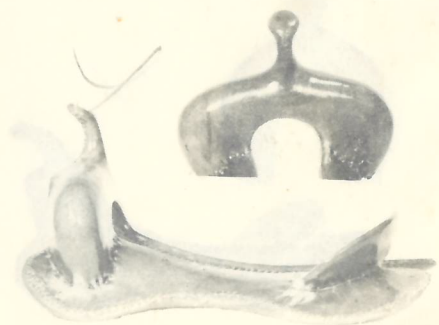
No. 108 S.F. Bowman



Horn: Dally, 3'' Cap, 3 $\frac{3}{4}$ '' high
Swell: 13'' wide
Cantle: 3'' high, 13'' wide, 1'' dish
Gullet: 8'' high

ARIZONA BARS

No. 128 Dina Special



Horn: Dally, 1 $\frac{3}{4}$ '' Cap, 3 $\frac{3}{4}$ '' high
Swell: 13'' wide
Cantle: 3'' high, 13'' wide, 1'' dish
Gullet: 8'' high

ARIZONA BARS

No. ~~129~~ Ellensburg



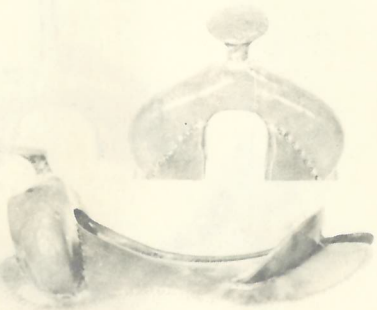
Horn: Dally, 3" Cap, 3 3/4" high
Swell: 14" wide
Cantle: 3" high, Comfort Style,
13" wide, 1 1/2" dish
Gullet: 8" high

No. 147 Low Association



Horn: #1, 2 3/4" Cap, 3 3/4" high
Swell: 14" wide
Cantle: 4" high, 13" wide, 1 1/2" dish
Gullet: 8" high

No. 139 Pro Roper



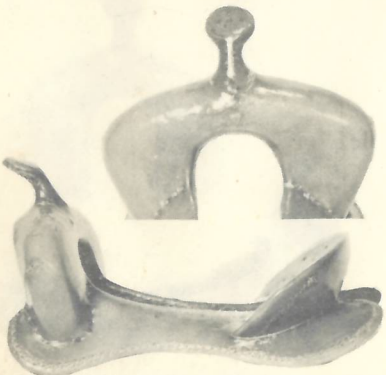
Horn: #6, 3" Cap, 3 1/2" high
Swell: 12 1/2" wide
Cantle: 2 1/2" high, 12" wide, 1 1/2" dish
Gullet: 7" high

No. ~~148~~ Low Ivory



Horn: #5 Post Dally, 2 1/2" Cap, 4" high
Swell: 13" wide
Cantle: 3" high, 13" wide, 1" dish
Gullet: 8" high

No. 141 M.J. Barrel Racer



Horn: #1, 2 1/4" Cap, 3 1/4" high
Swell: 13" wide
Cantle: 3" high, 13" wide, 1" dish
Gullet: 8" high

No. 155 Pony Express



No. 157 Rocky Mountain Roper



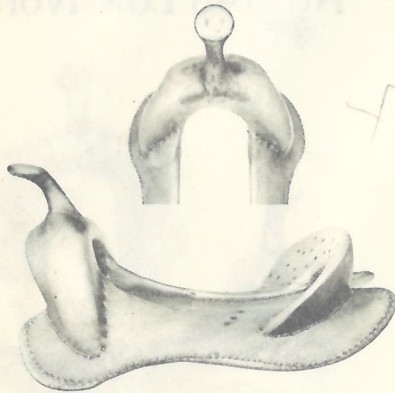
Horn: #2, 3'' Cap, 3½'' high
 Swell: 13'' wide
 Cantle: 3½'' high, 13'' wide, 1½'' dish
 Gullet: 8'' high

No. 173 Tipton



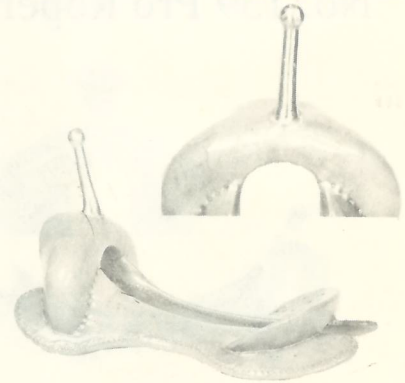
Horn: #1, 2¼'' Cap, 3¼'' high
 Swell: 14'' wide
 Cantle: 4'' high, 13'' wide, 1½'' dish
 Gullet: 8'' high

No. 165 Slick Fork Roper



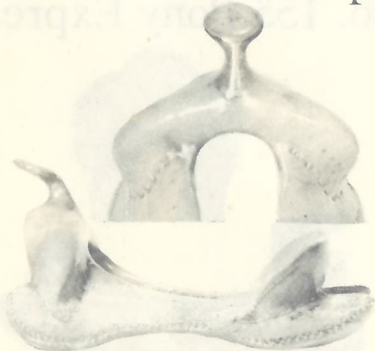
Horn: Dally, 2¼'' Cap, 3¾'' high
 Swell: 9'' wide
 Cantle: 3'' high, 13'' wide, 1'' dish
 Gullet: 8'' high

No. 175 Trick Tree



Horn: 7'' Trick Horn
 Swell: 9'' wide
 Cantle: 2'' high, 13'' wide, 1'' dish
 Gullet: 7½'' high
 ARIZONA BARS

No. 168 T.M. Roper



Horn: Dally, 3'' Cap, 3¾'' high
 Swell: 13'' wide
 Cantle: 3½'' high, Comfort Style,
 13'' wide, 1½'' dish
 Gullet: 8'' high

ARIZONA BARS

No. 180 D.R. Roper



Horn: #4 Post Dally, 2½'' Cap, 3½'' high
 Swell: 13'' wide
 Cantle: 3'' high, 13'' wide, 1'' dish
 Gullet: 7½'' high

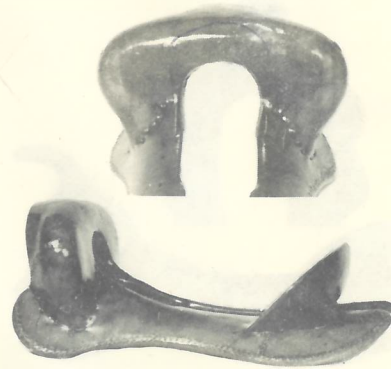
ARIZONA BARS

No. 181 Arizona T.M. Roper



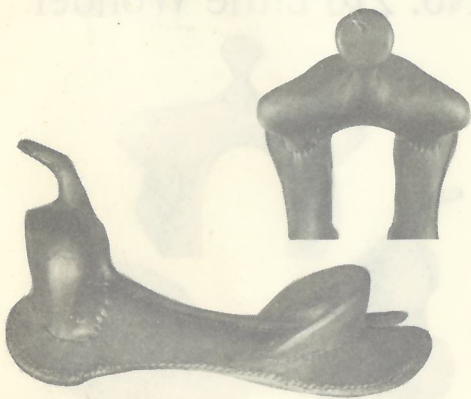
Horn: #5 Post Dally, 2½" Cap, 4" high
Swell: 13" wide
Cantle: 3" high, 13" wide, 1" dish
Gullet: 7½" high

No. 202 Standard or Rodeo Association



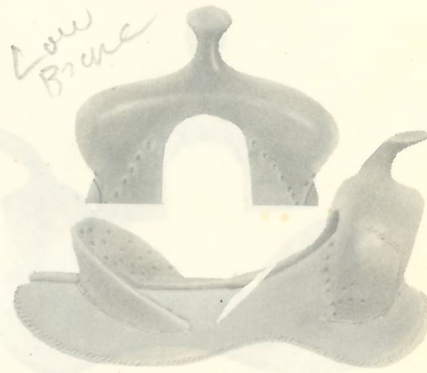
Horn: None
Swell: 14" wide
Cantle: 4" high, 13" wide, 1½" dish
Gullet: 9" high

No. 200 Parker



Horn: Dally, 3" Cap, 3¾" high
Swell: 15" wide
Cantle: 3" high, 13" wide, 1" dish
Gullet: 8½" high

No. 203 Tare Roper



Horn: Dally, 2¼" Cap, 3¼" high
Swell: 13" wide
Cantle: 3" high, 13" wide, 1" dish
Gullet: 8" high

No. 201 Sid Special



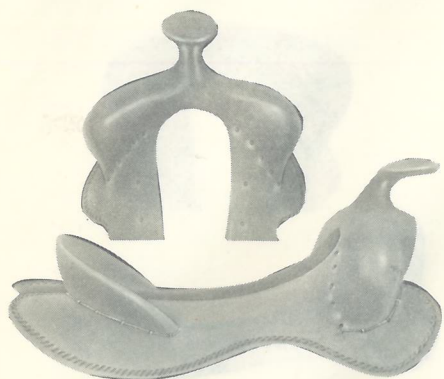
Horn: #1, 2¼" Cap, 3¼" high
Swell: 14" wide
Cantle: 4" high, 13" wide, 1½" dish
Gullet: 8½" high

No. 204 Rudy Roper



Horn: Dally, 2¼" Cap, 3¾" high
Swell: 13" wide
Cantle: 3" high, 13" wide, 1" dish
Gullet: 8" high

No. 206 Low Down Roper



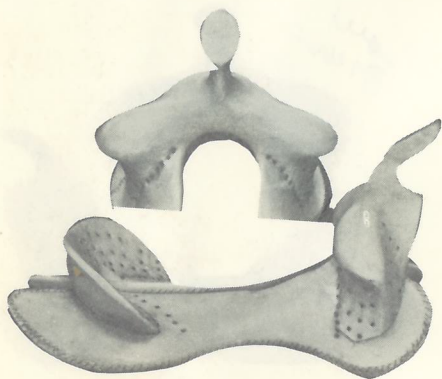
Horn: #2, 3'' Cap, 3½'' high
 Swell: 13'' wide
 Cantle: 3'' high, 13'' wide, 1'' dish
 Gullet: 7½'' high

No. 209 Van Horn Roper



Horn: #2, 3'' Cap, 3½'' high
 Swell: 12'' wide
 Cantle: 3'' high, 13'' wide, 1'' dish
 Gullet: 7¾'' high

No. 207 Extra Low Moose Cutting Horse



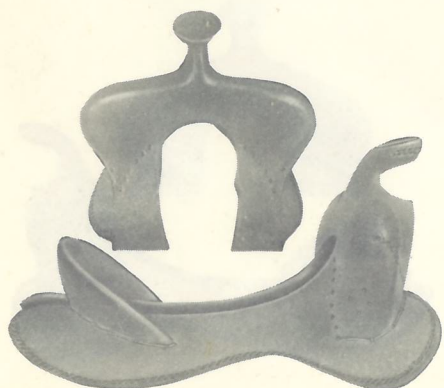
Horn: Egg Mex, 3¼'' by 2¼'' Cap, 3¾'' high
 Swell: 14'' wide
 Cantle: 3'' high, Comfort Style,
 13'' wide, 1½'' dish
 Gullet: 8'' high

No. 210 Little Wonder



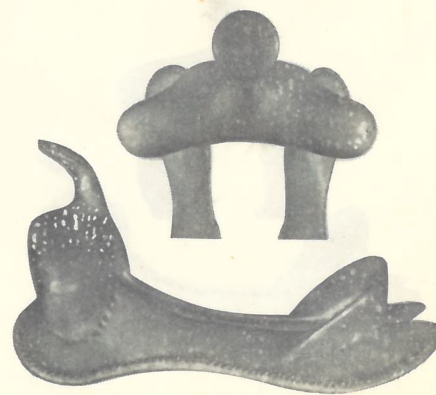
Horn: #1, 2¼'' Cap, 3¼'' high
 Swell: 14'' wide
 Cantle: 3'' high, 13'' wide, 1'' dish
 Gullet: 8'' high

No. 208 In-Between Roper



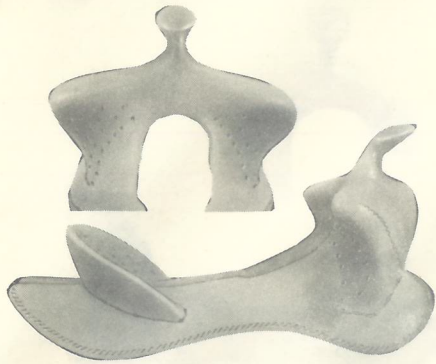
Horn: #1 Mex, 3'' Cap, 3'' high
 Swell: 14'' wide
 Cantle: 3½'' high, 13'' wide, 1½'' dish

No. 211 Fits Better



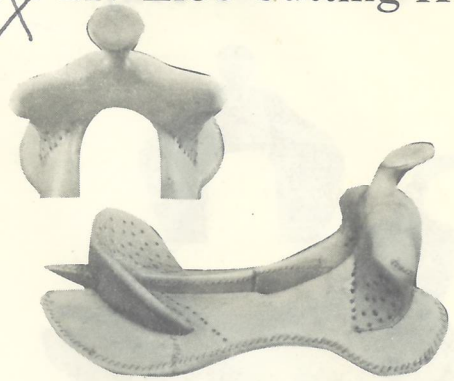
Horn: Dally, 3'' Cap, 3¾'' high
 Swell: 14'' wide
 Cantle: 3'' high, 13'' wide, 1'' dish

No. 212 Fits Better Roper



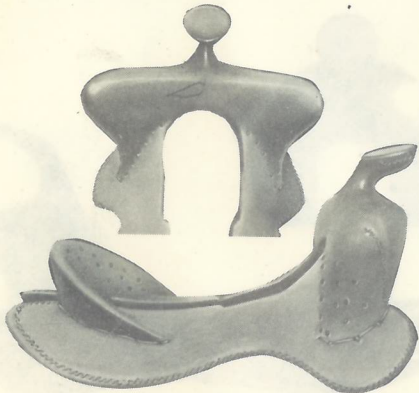
Horn: #1, 2 1/4" Cap, 3 1/4" high
 Swell: 14" Wide
 Cantle: 3" high, 13" wide, 1" dish
 Gullet: 8" high

No. 217 Elbo Cutting Horse



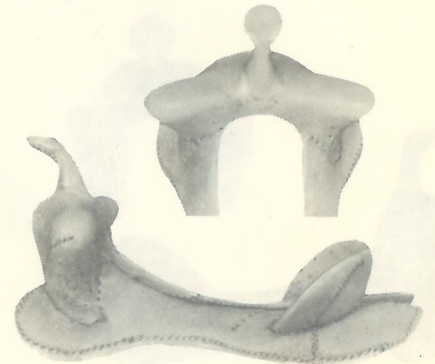
Horn: #1, 3" Cap, 3 1/4" high
 Swell: 13" Wide
 Cantle: 3" high, Comfort Style,
 13" wide, 1 1/2" dish
 Gullet: 8" high

No. 214 San Angelo Cutting Horse



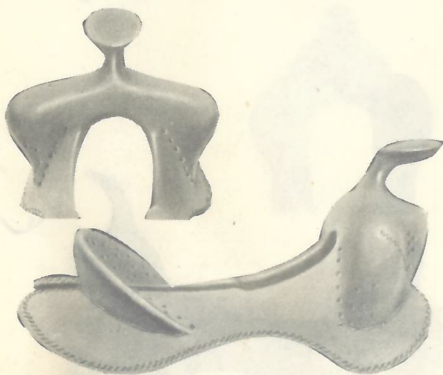
Horn: #1 Mex, 3" Cap, 3" high
 Swell: 14" wide
 Cantle: 3" high, 13" wide, 1" dish
 Gullet: 8" high

No. 220 Kernal Coon Kutter (KCK)



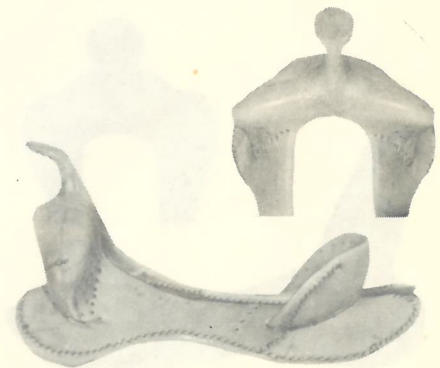
Horn: Dally, 2 1/4" Cap, 3 3/4" high
 Swell: 14" wide
 Cantle: 3" high, Comfort Style,
 13" wide, 1 1/2" dish
 Gullet: 8" high

No. 216 Black Hawk Roper



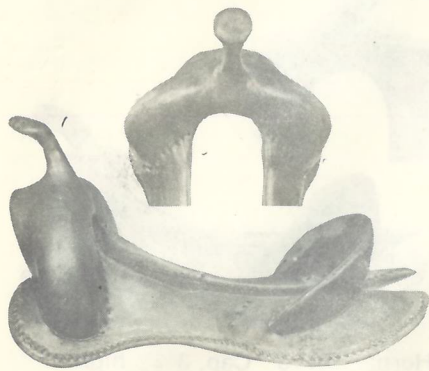
Horn: #2, 3" Cap, 3 1/2" high
 Swell: 13" wide
 Cantle: 3" high, 13" wide, 1" dish
 Gullet: 8 1/2" high

No. 221 Leg-Cut Low Down Roper



Horn: Dally, 3" Cap, 3 3/4" high
 Swell: 12" wide
 Cantle: 3" high, 13" wide, 1" dish
 Gullet: 7 1/2" high

No. 222 Joe Gray



Horn: Dally, 2¼" Cap, 3¾" high
Swell: 13" wide
Cantle: 3½" high, 13" wide, 1" dish
Gullet: 8" high

No. 228 Tic-Toc Roper



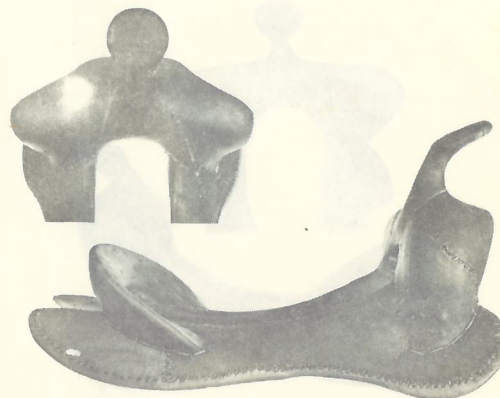
Horn: #2R Mex, 3" Cap, 3½" high
Swell: 13" wide
Cantle: 3" high, 13" wide, 1" dish
Gullet: 7½" high

No. 223 California Roper



Horn: #5 Post Dally, 2½" Cap, 4" high
Swell: 13" Wide
Cantle: 3" high, 13" wide, 1" dish
Gullet: 8" high
ARIZONA BARS

No. 229 War Bonnet Roper



Horn: Dally, 2¼" Cap, 3¾" high
Swell: 13" wide
Cantle: 3" high, 13" wide, 1" dish
Gullet: 8" high

No. 226 Improved Round Up



Horn: Dally, 3" Cap, 3¾" high
Swell: 12" high
Cantle: 3" high, 13" wide, 1" dish
Gullet: 7¾" wide

No. 230 Butch Cassidy



Horn: Dally, 2¼" Cap, 3¾" high
Swell: 10" wide
Cantle: 4" or 5" high, Shovel-Beveled Style
Gullet: 8" high

No. 232 Craig Roper



Horn: Dally, 3'' Cap, 3 3/4'' high
Swell: 10'' wide
Cantle: 3'' high, 13'' wide, 1'' dish
Gullet: 8'' high

No. 161 Santa Fe



Horn: Duck Bill, 5'' Cap, 3'' high
Swell: 9'' wide
Cantle: 5'' high, Old Santa Fe Style
w/hand holds
Gullet: 8'' high

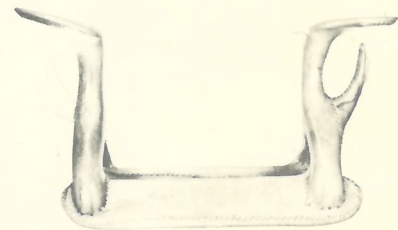
No. 233 Bowden Roper



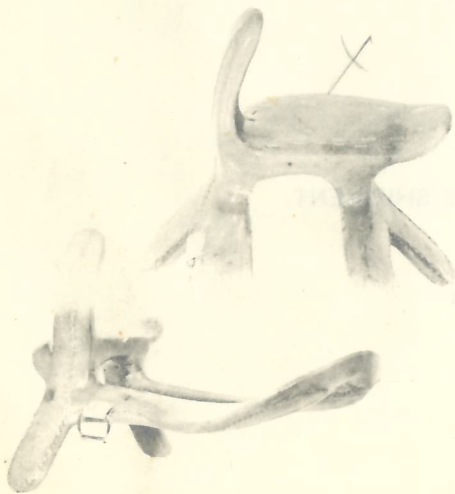
#11 Bowden

Horn: #4 Post Dally, 2 1/2'' Cap, 3 1/2'' high
Swell: 13'' wide
Cantle: 3'' high, 13'' wide, 1'' dish
Gullet: 8'' high

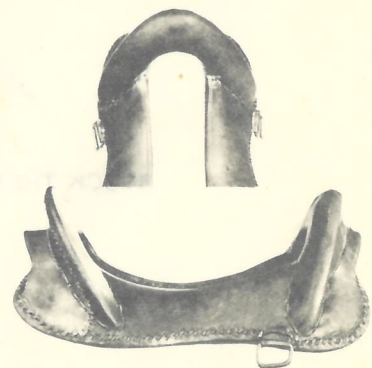
No. 225 Squaw Tree



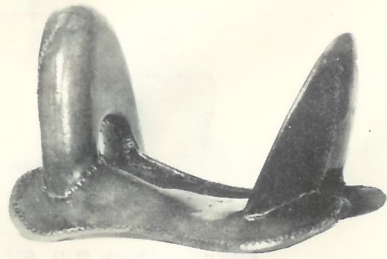
Side Saddle



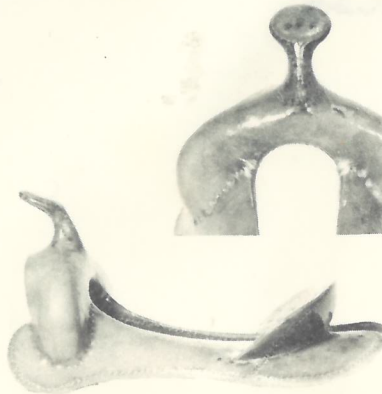
Mc Cellan



Arabian Costume Tree



No. 108 Stock S.F. Bowman



Seat: 15", 15½", or 16"
Swell: 13" wide
Cantle: 3" high, 13" wide, 1" dish

Horn: Dally, 3" Cap, 3¾" high
Gullet: 8" high, 6" wide
SEMI-QUARTER HORSE BARS

STOCK TREES AVAILABLE FOR IMMEDIATE SHIPMENT

Available only in sizes listed
Please specify desired seat length



Standard Saddle Tree Co.



Horns

Standard Saddle Tree Co. has a wide and varied selection of horns to choose from when you purchase a saddle tree.

STYLE

Choose from the following:

- A. Regular
- B. Dally
- C. Mexican
- D. Duckbill
- E. Trick

MEASUREMENT: Use the following picture and illustration to help.



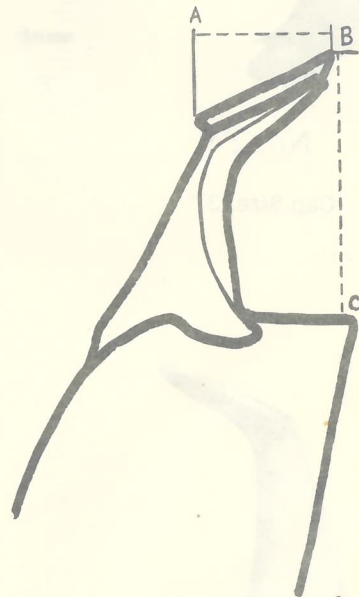
NEW!! #6

Cap Size: 2"

Larger cap sizes available

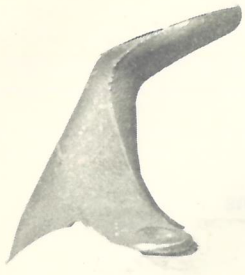
HEIGHT: Be sure to measure from the top of the horn straight down to the front of the fork. Line B.

CAP SIZE: Width of cap. Line AB.

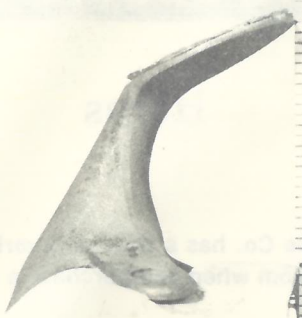


TENSILE STRENGTH

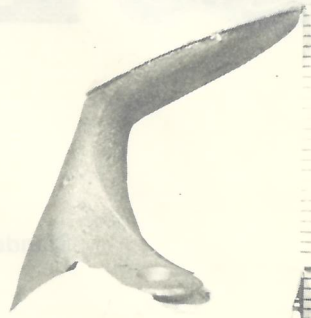
Our horns are made of the finest brass, bronze, and ductile iron and have passed severe tensile strength tests. This insures their durability for roping and any other stress put upon them!



Boy *
Cap Size, 2''



No. 1 *
Cap Size, 2 1/4''



No. 1 *
Cap Size, 3''



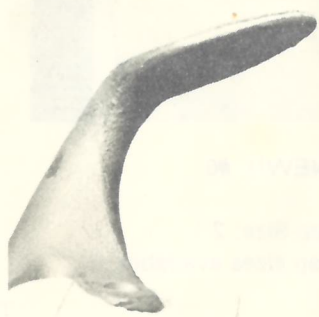
No. 2 *
Cap Size, 3''



No. 2 or Dally *
Cap Size, 2 1/4''



Dally *
Cap Size, 1 3/4''



Dally *
Cap Size, 3''

* These horn styles are available in larger or South West style caps.



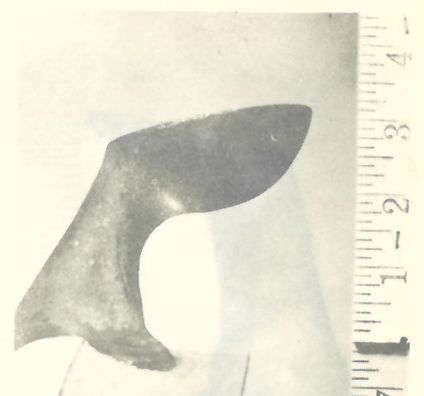
No. 1 Mexican

Cap Size, 3''



Mexican

Cap Size, 3 1/2''



No. 2R Mexican

Cap Size, 3''



No. 2 Mexican

Cap Size, 4''



Mexican Dally

Cap Size, 3''

Also Available in 3 1/2''



Egg Horn

2 1/4 x 3 1/4''



Old Mexico

Cap Size 4''



No. 4 Post Dally Horn *

Cap Size, 2½"



No. 5 Post Dally Horn *

Cap Size, 2½"



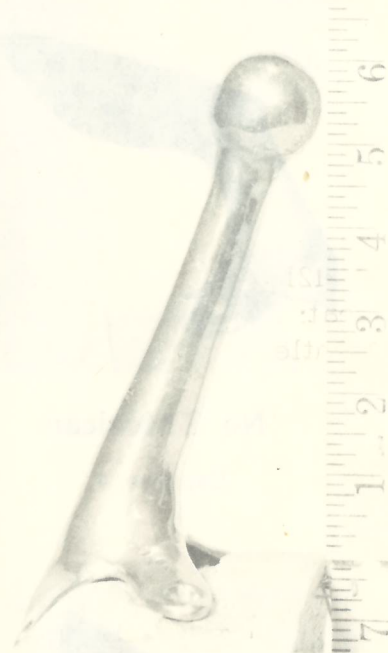
Texas Dally *

Cap Size, 3"



Duck Bill *

Cap Size, 2½"



Nickel Trick Horn 7''



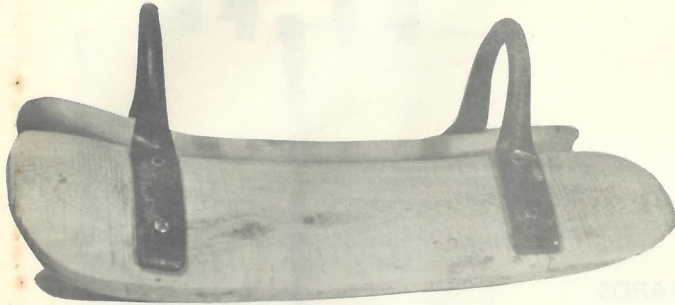
No. 2 or Dally
South West

Cap Size, 2½"

* These horn styles are available in larger cap sizes or South West style caps.



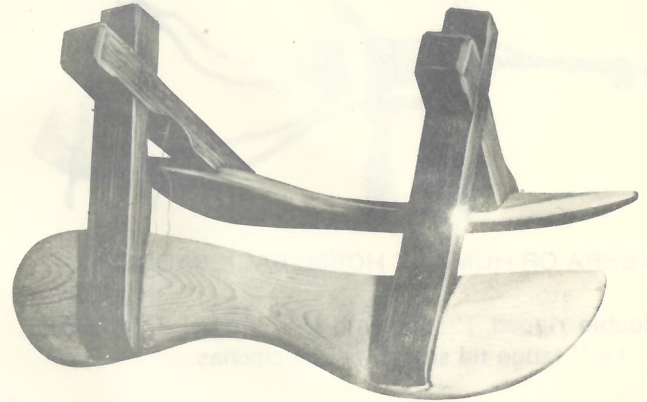
PACK SADDLE TREES



Decker Pack Tree

Cast iron forks bolted to 21 inch, painted bars.

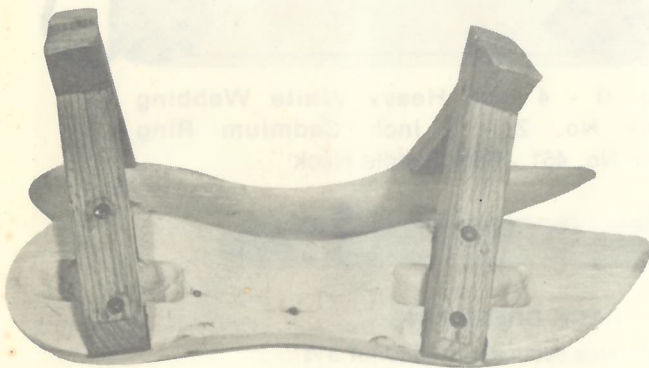
Also available with bronze fork, shaped to hold panniers without tying. With or without slots in Bars for attaching straps.



NEW!! Serra Pack Tree

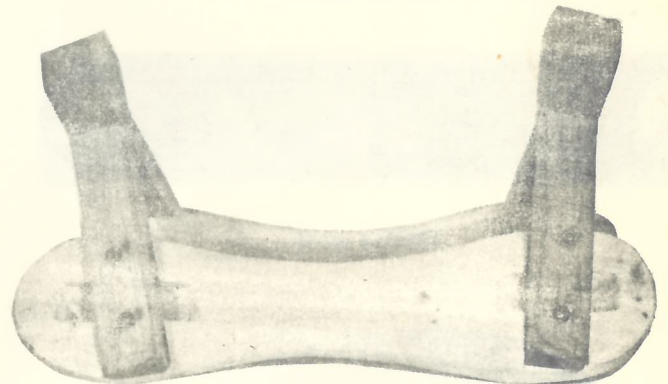
With bars designed to fit a horses back.

With oak forks and with or without slots in bars for attaching straps!



Humane Horse Pack Tree

Oak forks fastened to 21 inch bars



**Common Pack Tree
Horse and Burro**

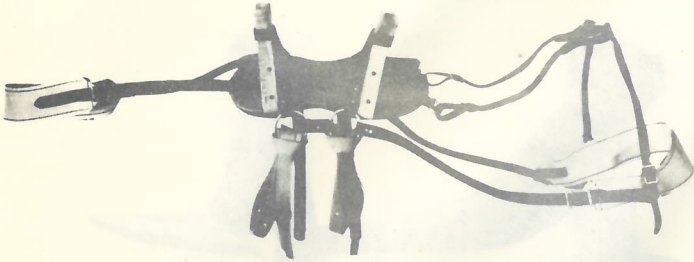
Oak forks fastened to 21 inch bars



Standard Saddle Tree Co.



Pack Saddles and Equipment



SIERRA OR HUMANE HORSE PACK SADDLE

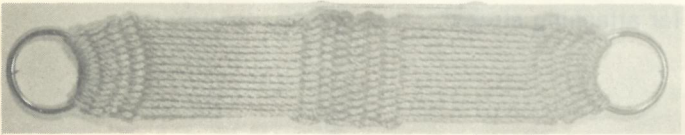
Full double rigged 1" hip and back straps, 1 1/4" side straps, 1 1/2" latigo tie straps, cotton cinchas.



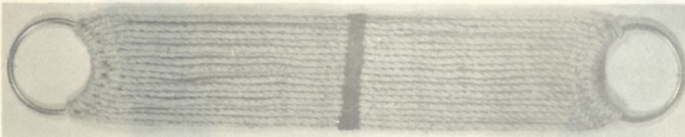
PANYARDS

Pack Bags, heavy duck canvas, 34" wide, 22" deep, 1 1/2" straps.

COTTON CINCHAS

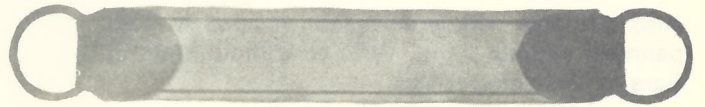


10W27 w/1t

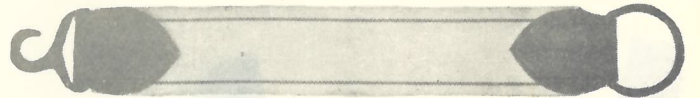


101B15 w/1t

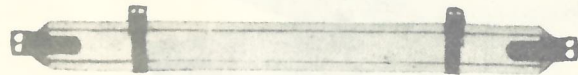
LASH CINCHAS



No. 0 - 4 inch Heavy White Webbing
No. 2 - 3 inch Cadmium Rings



No. 0 - 4 inch Heavy White Webbing
One No. 2 - 3 inch Cadmium Ring
One No. 461 - Pack Saddle Hook



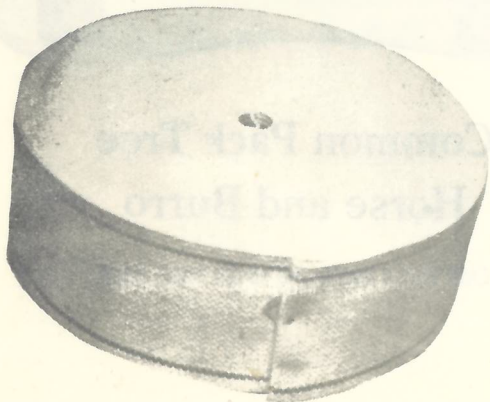
PACK BREECHING

1 1/4" buckles securely riveted on 3/2" web. 7/8" hip buckles.



PACK BREAST COLLAR

4" Web



BACK BAND WEBBING

3' Heavy Canvas

PACK SADDLE HOOK

No. 469

3 Solid Brass



2
36 BW
25 mbc
25 Tim
25 CAN
12

3
145