

Answers, Volume I

Page 1

Pre-test for Volume I

Give letter names for these notes.

Handwritten letter names for the notes in the musical notation:

C C G# D B F E# Ax

F D^b B D# A G^b D^{bb} F

Are the notes in each measure a step or a skip apart?

Handwritten answers for the step/skip exercise:

skip step step skip step

What are the names of these symbols?

<i>f</i> <u>forte</u>	<u>treble clef</u>
<i>b</i> <u>flat</u>	<u>half note</u>
<i>#</i> <u>sharp</u>	<i>pp</i> <u>pianissimo</u>
$\frac{4}{4}$ <u>meter</u>	<i>></i> <u>accent</u>

Page 2

Assignment. Count the number of sharps or flats in each key signature.

Handwritten answers for key signature counting:

5^b 2[#] 6^b 6[#] 1^b

Handwritten answers for key signature counting:

3[#] 4[#] 4^b 7[#] 7^b

The last two examples have all seven sharps and flats. List the order of the sharps as they appear in a key signature.

F C G D A E B

List the order of the flats as they appear in a key signature.

B E A D G C F

Page 3

Assignment. Identify the name of these key major signatures.

Handwritten answers for key signature identification:

F# G A D E

Handwritten answers for key signature identification:

D G E B C#

Page 4

Assignment. Identify these major key signatures.

Handwritten answers for key signature identification:

C B^b E^b F D^b

Handwritten answers for key signature identification:

C^b E^b A^b G^b F

Page 5

Assignment. Draw a pedal diagram for these key signatures.

Handwritten pedal diagrams for the key signatures shown in the musical notation.

Identify the major key shown in these key signatures. Draw a pedal chart beneath each.

Key: B^b B G^b

Key: A A^b G

Key: E^b $F^\#$ D^b

Key: D F E

Make a pedal chart for all of the major keys.

C major

Flat keys: **Sharp Keys:**

F major

Bb major

Eb major

Ab major

Db major

Gb major

Cb major

G major

D major

A major

E major

B major

F# major

C# major

Assignment. Write these major scales, using flats and sharps from their key signatures. Check your answers by playing the scales. Fill the pedal chart for each key (scale).

F major

A major

G major

Db major

Bb major

E major

Pedal chart:

D Major

C major

Gb Major

Eb major

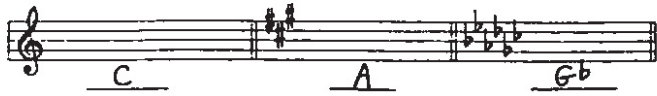
Ab major

C= Major

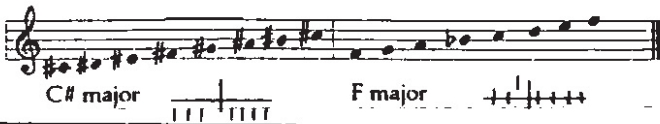
F# major

B major

Identify these major key signatures.



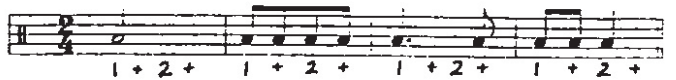
Write a pedal chart for these major keys. Also supply the scales.



Matching:

Match these foreign tempos and dynamic markings with the correct translation.

- | | | |
|---|------------|-------------------------|
| C | <i>p</i> | A. slow down |
| E | V.S. | B. Get louder |
| F | Meno | C. Soft |
| H | Presto | D. Very slow |
| A | Ritard | E. Turn the page, fast! |
| G | Andante | F. Less |
| I | Diminuendo | G. Rather slow |
| D | Largo | H. Very fast |
| J | <i>mf</i> | I. Get softer |
| B | Crescendo | J. Rather loud |



Write in the beats beneath these rhythms.



Write in the beats beneath these rhythm exercises.

Challenger!

Assignment. Write the number of these intervals.

Assignment. Write the number of these intervals.

1. Write in the number of each interval.

Review Test for Volume I

1. Identify these major key signatures.

2. Provide pedal charts and scales for these major keys.

3. Matching

- | | | | |
|---|----------|----|--------------|
| B | dim | A. | medium tempo |
| D | Presto | B. | get softer |
| E | ♪ | C. | quarter note |
| A | Moderato | D. | fast |
| C | ! | E. | eighth note |

4. Identify these intervals.

5. Write in the beats beneath these rhythms.