

50
MILJARDI
ANNI



MACHINE
OF THE YEAR 2014

MEILENSTEINE
DER
LANDTECHNIK



MERLO



TURBOFARMER II

XG

Merlo's factories in San Defendente di Cervasca (Cuneo) cover an area of 300,000 m² (with 220,000 m² inside facilities)



1. Merlo SpA main offices
2. Final assembly lines
3. Lines for assembling components and cabs
4. Moulding of technopolymers
5. Automated storing and shipping centre
6. Machines plus attachments shipping centre
7. Final quality control
8. Technological centre
9. Steel and structural assembly lines centre
10. 3M attachments
11. CFRM (Training & Research Centre)

The Merlo Group

N° 1 for technology and safety

The Merlo brand has always been synonymous with advanced technology in the telehandler field and our history, since 1964, is hallmarked by experience based on determination and passion.

The development of complex products, from the idea to the result, from design to sales, means being able to propose orientations of the most competitive markets.

The outcome of our efforts are compact, easy to handle telehandlers ensuring incomparable operating performance, comfort, efficiency and safety.

At Agritechnica 2013, three important awards were received that clearly demonstrate the technological and innovative superiority of our products:

- Turbofarmer 42.7 Hybrid: Gold Medal for innovation at Agritechnica.
- Turbofarmer II: Machine of the year 2014 in the “handling and logistics” category.
- Multifarmer: Selected as a “milestone” in agriculture.

- **> 1.100** employees
- Surface area of **300,000 m²** of which **220,000 m²** are indoors
- **90%** exports
- **600** dealers all over the world
- **8%** of turnover invested in R & D
- **65** robots



Automated boom bending workstation



Roto robotised welding of the chassis

Merlo, the inventor of the telehandler and its application in agriculture, presents the new Turbofarmer II range



**MACHINE
OF THE YEAR 2014**

The New Turbofarmer
Family
Machine of the year 2014



New modular Turbofarmer range

The telehandler in agriculture according to Merlo

We were the first to launch a range of telehandlers dedicated to agriculture in 1996. Today, we proudly present the new generation developed on the strength of experience acquired in 50 years of operations.

- + **Comfort**
 - ➔ Largest cab in its category
 - ➔ Suspended cab; a unique and patented solution
- + **Efficiency**
 - ➔ -18% consumption with standard EPD
- + **Performance**
 - ➔ 122 HP engines without particulate filter and 156HP*
- + **Versatility**
 - ➔ "TT": frame levelling and side shift
 - ➔ Mechanical PTO
- + **Safety**
 - ➔ Cab compliant with ROPS and FOPS level II standards**
 - ➔ M CDC Dynamic Load Control

* The most powerful machine in its category

** EN ISO 3449/2008, protection level II (highest protection level provided by the norm and equivalent to the fall of a 227 kg object from 5.22 metres)



- **EPD – 18%** consumption
- **CS suspended cab** the only one in its category
- **"TT" tilting** + lateral **shifting** of the boom, versatility and precision, not found anywhere else
- **4.2 tons at 7 metres**
(version P 42.7 TT)

New Merlo Turbofarmer family

Concentrated technology



Comfort

- Largest cab on the market 1010 mm
- Standard cab on silent-block
- "CS" cab with hydropneumatic suspensions

Hydraulic system options

- Gear pump with electromechanical joystick
- Load-sensing pump with electromechanical joystick
- LS Pump + Flow-sharing + Electromechanical joystick or electronic optional (standard on CS)

Efficiency – Powertrain

- Tier 4 Interim Engines - 122 HP and 156 HP
- Merlo 2-speed hydrostatic transmission
- CVTronic transmission (dedicated versions, CS and TT)
- EPD – Eco Power Drive – on all versions, with the option of EPD Plus and EPD Top

Innovative Merlo systems

- Tilting + lateral movement of the boom
- Tac-Lock rapid coupling of the attachments

Lifting capacity

- Booms from 7 to 10 metres
- Capacities ranging from 3.8 to 4.2 tons

Safety

- M CDC Merlo dynamic load control
- Cab compliant with FOPS/ROPS

Towing versatility

- Tow hook up to 21 tonnes
- Drawbar
- Hydraulic connections (2 opt.)
- Trailer braking (Pneu/Hydr.)

Versatility in the field

- Mechanical PTO (optional)
- Speed 540/1000

The Turbofarmer range

A version for every requirement

| MODEL | ENGINE | | CAB | | HYDRAULIC | | CHASSIS | | TRANSMISSION | | SAFETY DEVICES | |
|----------------------------|---------------------------|----------------------|--------|-----------|-----------|--------------|---------|-----------------|--------------|-----------|----------------|-----------|
| | 122 - Tier 4 Interim | 156 - Tier 4 Interim | Steady | Suspended | Gears | Load Sensing | Fixed | Tilting + Shift | 2V | MCVTronic | CDC | cdc light |
| TF38.7 | TF38.7-120 (G)* | X | | X | | X | | X | | X | | X |
| | TF38.7-120 | X | | X | | X | X | | X | | X | |
| | TF38.7 CS-120 | X | | | X | X | X | | X | | X | |
| | TF38.7-120-CVTRONIC | X | | X | | X | X | | | X | X | |
| | TF38.7 CS-120-CVTRONIC | X | | | X | X | X | | | X | X | |
| | TF38.7 TT-120 | X | | X | | X | | X | X | | X | |
| | TF38.7 TT CS-120 | | | | | | | | | | | |
| TF38.10 | TF38.10-120 (G)* | X | | X | | X | | X | | | | X |
| | TF38.10-120 | X | | X | | X | X | | X | | X | |
| | TF38.10 CS-120 | X | | | X | X | X | | X | | X | |
| | TF38.10-120-CVTRONIC | X | | X | | X | X | | | X | X | |
| | TF38.10 CS-120-CVTRONIC | X | | | X | X | X | | | X | X | |
| | TF38.10-156 | | X | X | | X | X | | X | | X | |
| | TF38.10 CS-156 | | X | | X | X | X | | X | | X | |
| | TF38.10 CS-156-CVTRONIC | | X | | X | X | X | | | X | X | |
| | TF38.10 TT-120 | X | | X | | X | | X | X | | X | |
| TF38.10 TT CS-120 | | | | | | | | | | | | |
| TF38.10 TT CS-156-CVTRONIC | | X | | X | | X | | X | | X | | |
| TF42.7 | TF42.7-156 | | X | X | | X | X | | X | | X | |
| | TF42.7 CS-156 | | X | | X | X | X | | X | | X | |
| | TF42.7 CS-156-CVTRONIC | | X | | X | X | X | | | X | X | |
| | TF42.7 TT CS-156-CVTRONIC | | X | | X | X | | X | | X | X | |

* G = gear pump models

Broad product offering:

- Available in **3 models** and **20 different** versions

Comfort:

- **12 "CS" versions**
for maximum comfort in the cab
- **BSS** boom suspension

New technologies:

- **CVTronic** + torque + productivity
- **4 "TT" Tilting versions**
+ **shift** as standard

Versatility and productivity:

- **PTO** optional
- **2 engines available**
122 HP or **156 HP**
- **2 boom lengths** - **7** and **10 m**
- **2 capacities** - **3.8** and **4.2 tons**

A close-up photograph of a green tractor's hood and engine compartment. A large, messy pile of dry straw is piled up on the black plastic hood. The tractor's body is a vibrant green. On the side panel, the word "TURBOFARMER" is printed in a bold, sans-serif font, with "TURBO" in grey and "FARMER" in green. A small green square logo with a white square inside is visible on the side panel. The background shows a blurred outdoor setting with a white building and greenery.

Fan Drive as standard on the entire range.
Radiators always clean

TURBOFARMER

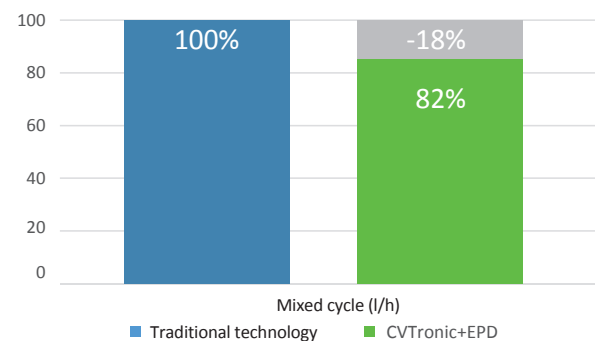
Engines & Transmissions

Higher performance and lower consumption

- ➔ The Turbofarmer range is equipped with two Tier 4 Interim engines:
90 kW/122 HP 3.6 litres at 2300 rpm, torque 480 Nm at 1600 rpm
115 kW/156 HP 4.1 litres at 2400 rpm, torque 609 Nm at 1600 rpm
- ➔ Merlo hydrostatic transmission with **EPD (Eco Power Drive) as standard 2**. As always Merlo telehandlers are equipped with hydrostatic transmissions for improved precision and safety with "active" braking". All versions are also equipped with EPD (Eco Power Drive) providing electronic control of the combustion engine, thereby helping to reduce consumption by 18% for effective annual savings.
- ➔ As standard on the CS and 156 HP models (an option on other models) there is the EPD Plus version that adds the "Speed control" **3** mode that allows the speed of the machine's movement to be memorised and to keep it constant (ideal for yard handling operations) and the ECO mode that limits the motor rpm, thereby obtaining further savings.
- ➔ All models with an electronic joystick (standard on CS) has the EPD Top system, which adds to the EPD Plus version the automated control of the Diesel revs according to the movement of the joystick in order to increase the speed of the movements of the telescopic boom, optimising the performance of the machine and keeping consumption to a minimum.
- ➔ The Turbofarmers are equipped with the «Fan Drive» **1** system that allows you to change the rotation direction of the fan, from suction to blowing.



Merlo CVTronic technology + EPD



- With the **EDP** system **consumption is reduced by 18%** compared to traditional technologies
- **Speed Control** management and **ECO** adopted as standard on EPD Plus and EPD Top
- **Fan Drive** as standard to ensure the radiators are always clean
- **Rpm** management
- Tier 4 Interim **90 kW/122 HP** or **115 kW/156 HP** engines

**New Merlo CVTronic transmission.
Accelerations without interrupting torque
and without stopping to change gear from 0 to 40 km/h**



Merlo CVTronic

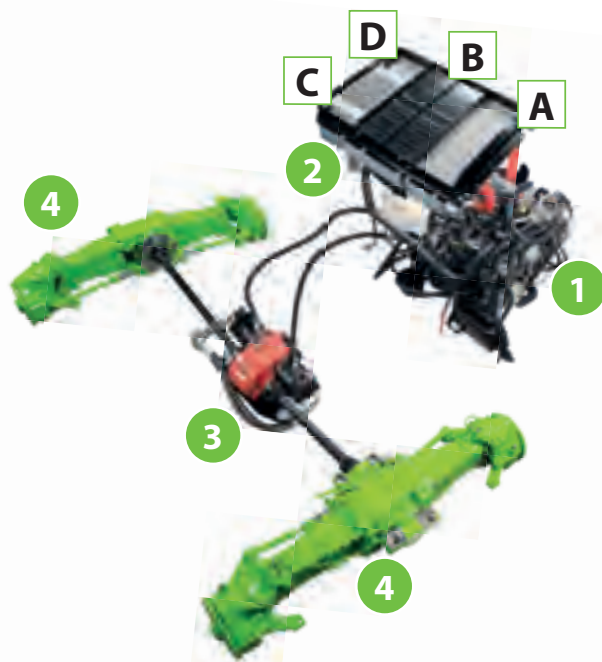
Merlo's own continuous variable transmission version

The CVTronic transmission follows Merlo's traditions in the hydrostatic field and ensures smooth acceleration without interrupting torque from 0 to 40 km/h.

The transmission comprises two axial piston hydrostatic motor (2X) powered by the electronically-controlled hydraulic pump.

At low work speeds, they function in conjunction to provide maximum torque, with an increase of + 12% with respect to conventional hydrostatic transmissions.

During transport, the second hydrostatic engine is automatically disengaged from the control system and the oil from the pump powers the main hydrostatic motor that pushes the Turbofarmer to maximum speed.



TRANSAXLE TURBOFARMER

1. Tier 4 Interim Engine
2. Radiant pack
3. CVTronic transmission
4. Merlo axles

FAN DRIVE AND DEDICATED RADIATORS

For temperatures less than 40° the fan comes on in an inverted condition for 30" to later return to normal use

- A. Intercooler radiator
- B. Engine radiator liquid
- C. Radiator hydraulic oil
- D. Radiator hydrostatic oil

• **+12% torque at low speeds** vs conventional hydrostatic transmissions

• **Accelerations** from 0-40 km/h, smooth and progressive **without interruptions** for a gear change

• **-18% consumption** thanks to the **EPD** system

6

Largest cab in the category

1. Merlo CDC - Dynamic Load Control: Merlo patented safety system ensures new safety standards.
2. New Joystick with reverse shuttle (duplicated on steering wheel): ergonomic and easy to use.
3. New display makes it possible to display a great deal of useful information for the operator.
4. New air conditioning system in line with automotive standards for fast and effective heating/cooling.
5. Inching-Control: expanded sensitivity for creep movements.
6. Curved windscreen: maximum visibility and safety in work at height.
7. Differential lock.
8. Glovebox.



Comfort record

World exclusive cab with suspensions

The new cab was developed to ensure record-breaking comfort for our users.

At 1010 mm, it is the largest in its category, yet even acoustic and thermal comfort involved detailed design; the cab is also pressurised to prevent dust entering the cockpit.

The air conditioning system is completely new and was developed based on automotive standards, halving the warm-up and cool-down times, guaranteeing an optimal temperature in all conditions.

The new Merlo cab can now reach an internal temperature of 22°C with an external temperature of 43 °C and full sunlight and an internal temperature of 26°C with an external condition of -15 °C and no solar irradiation.

The inlet vent is located on the side of the cab away from potential sources of dust and dirt.

On the inside there are 8 vents, three of which are for defrosting the windscreen for optimal climate comfort. THERE IS the suspended cab, something only Merlo offers in the field of telehandlers: the pneumatic suspensions provide the best comfort in its class.

AIR CONDITIONING SYSTEM



The air flow is distributed evenly inside the driver's cab and reaches all areas in an optimal manner.

- **1010 mm wide.**

The cab is the largest in its category

- **10 versions** equipped with "CS" suspended cab

- **- 3 dB of interior noise;** sound levels halved in comparison with the previous generation of machines



Hydropneumatic suspended cab which can be activated by the operator. The only one of its kind on the market.



BSS hydropneumatic suspension of the boom (optional), which can be activated by the operator, automatically deactivates under 3 km/h to ensure maximum precision in the positioning of the loads.



Pneumatic seat for improved comfort.



CDC as standard on the entire range safety come first!



MERLO DYNAMIC LOAD CONTROL

1. with equipment in use
2. Work area
3. Load positioning (in work area)
4. Load detection menu
5. Operating parameters
6. Work information
7. Stability index

The MDC system verifies the conditions of longitudinal stability in real time and provides the operator with an indication of the percentage of usage of the maximum stability condition. Maximum safety.

MANUAL RECOGNITION OF THE ATTACHMENT

A specific selector switch allows manual the type of attachment in use manually or automatically. Distance values that can be selected are:

- 0.5-0.6 metres
- 1.5 metres
- 4 metres

- A. Manual recognition selector
- B. Control for managing the M CDC screens

Merlo Dynamic Load Control

Safety as standard for everyone

The Merlo Group considers safety as an absolutely essential value and this is why it invented the M CDC system. The objective is to allow every operator to work in total safety by fully exploiting the potential of the telehandler and the equipment used.

The Merlo CDC system means that the Turbofarmer automatically recognises the attachment fitted and consequently calibrates its performance in relation to specific load charts. The operator can check at any time the dynamic equilibrium of the vehicle, thanks to the led on the screen or the traffic light on the front upright.

For manoeuvres that may give rise to a telehandler stability risk, the M CDC system will block the boom and prevent any further movements that may worsen the situation.

On versions with a gear pump as standard, the CDC light system ensures all Merlo safety levels but without the display and without automatic recognition (not compatible with platform).



Rear video camera (optional)

Automatic equipment recognition



Sensor on the attachment



Sensor on the carriage

- **Safety** beyond even **EN15000** standards
- **Automatic attachment** recognition **
- **8.5" display** in cab
- **ROPS and FOPS protection**, no impact on comfort



**Valid for equipment built in Merlo factories and fitted with the M CDC sensor

Boom handling: speed and precision



Merlo precision and technology


Being unique is our trademark

Merlo produces the booms mounted on its telehandlers in-house and has developed unique technologies to make them strong yet lightweight, protect handling mechanisms against accidental blows and allow users to position the load in the most precise manner possible.

- ✓ Boom sheet metal welded on the boom's neutral bending axis
- ✓ Cartridge protected handling system inside the boom, thanks to a patented solution that is easy to access if maintenance is needed
- ✓ Tac-Lock: hydraulic attachment clamping system from the cab
- ✓ Tilting: system for correcting tilt, built into the chassis, allowing the operator to correct ground slopes and work in complete safety
- ✓ Movement: the boom can be moved sideways by the operator so that the load can be positioned with maximum precision, comfort and time-saving.
Shift range **530 mm**.



| WORKING TIMES | seconds |
|---------------|---------|
| ASCENT | 6.6 |
| DESCENT | 5.5 |
| EXTENSION | 5 |
| RETRACTION | 3,3 |




- **Lighter** but **stronger** booms: automated welding on the neutral axis, area with less strain.
- **Extension mechanism** well-protected inside the boom
- **TT** versions: unique tilting and shift movement with a patented system



PTO coupling selector



One telehandler,
a multitude of applications

Towing hooks & PTOs

Telescopic versatility!

We are determined to ensure that Merlo telehandlers are increasingly multi-purpose in order to maximise return on investment for our clients. The new Turbofarmer range takes this concept to even higher limits. As well as conventional handling, logistics and maintenance applications typical of telehandlers, the new Turbofarmers allow you to use them even for towing, thanks to the towing hook type-approved for 21 tons and the pneumatic and hydraulic trailer braking system. For tasks with attachments requiring PTOs, both versions of 122 HP and 156 HP are available with a mechanical PTO to allow towing operations with *unifeed* mixer trucks, rotary balers, seeders and sprayers.



- Mechanical **PTO 540/1000** that can be selected from cab
- Net power at the PTO **110 HP** and **135 HP** depending on the engines used
- **Towing** hook of **21 tons** with pneumatic and hydraulic braking
- **Rear hydraulic connections**
- **Braking system**, hydraulic or pneumatic

New Turbofarmers,
the best ground clearance

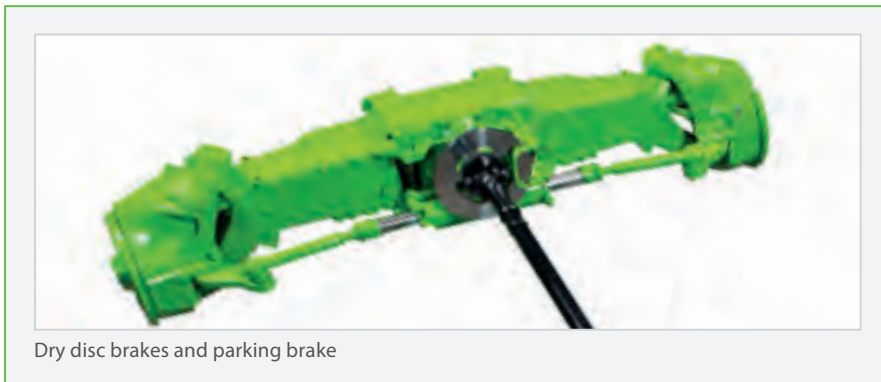
460 mm
ground
clearance.
405/70-24
tyres



Axles and brakes, effective and efficient

Real benefits

Our Turbofarmer telehandlers are equipped with axles that have been conceived, designed and constructed in-house. There are two types, both made of cast iron and with cascade reducers, for which we assure sturdiness, excellent steering performance and ground clearance for “best in class” status. All of our Turbofarmer telehandlers are equipped with 4 dry disc brakes that allow for consistent reduction of friction and, thus, fuel consumption in comparison to oil bath discs. The parking brake is automatically engaged when the engine is switched off. The operator can also engage it at will when the engine is running for stationary work on slopes. Ground clearance from 460 to 510 mm (405/70-24 and 460/70-R24 tyres) to nimbly get around any obstacles.



THREE STEERING MODES:

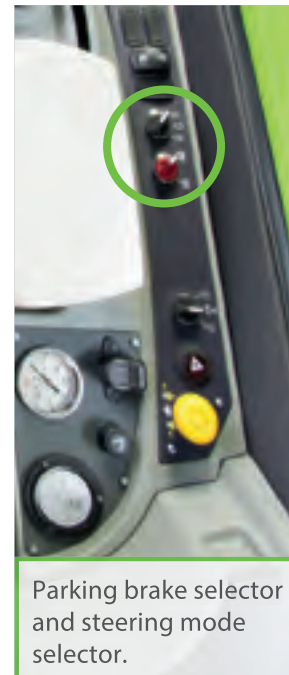
FRONT WHEEL STEERING



COORDINATED STEERING



CRAB STEERING



- Axles **conceived, designed** and **produced** in-house by Merlo
- Up to **510 mm clearance** off the ground, the best in its category
- **Three steering modes**
- **Dry brakes** to reduce friction and consumption
- Automatic **parking brake** system for when the **engine switches off**



Merlo attachments,
many solutions in a single handler

From the idea to development of multi-applicability

More efficiency and productivity thanks to Merlo

Merlo adopts simple and effective guidelines in the evolution of the product. From conception to development, everything is studied, designed and created in the Group's plants. This simple "rule" also applies to attachments. Backed by years of experience, Merlo's technicians have developed a wide range of attachments, divided by type and load capacity. This standard makes it possible to adapt tested and interchangeable production equipment to allow for targeted uses, with the intention of facilitating work and reducing its execution times.



BALE FORKS



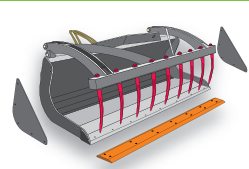
MANURE FORK WITH CLAW



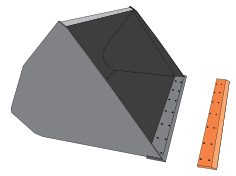
GRIPPERS FOR BALES



MULTI-PURPOSE LOADER WITH CLAW



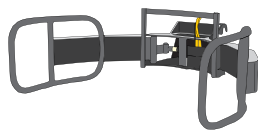
LOADERS



HOOKS/LIFTING BOOMS



GRIPPERS FOR WRAPPED BALES



PLATFORMS





TRAINING CENTRE

The Merlo Training and Research Centre (CFRM) has made safety training and instruction in the use of the machine its mission. The CFRM provides training courses for operators of person-carrying overhead platform, forklift trucks, telehandlers, cranes, earth-moving machinery, agricultural and forestry tractors, snow ploughs and urban cleaning vehicles.

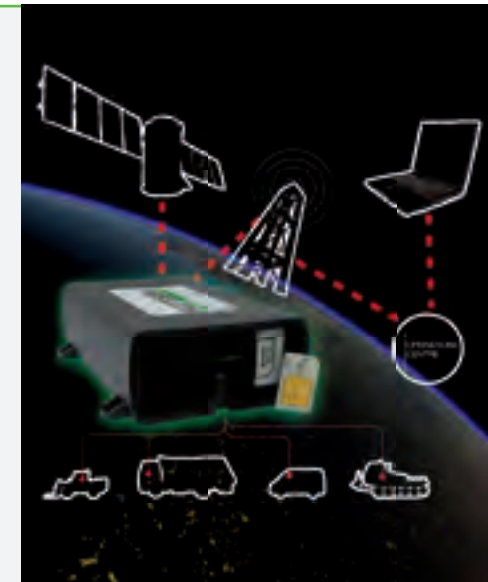


Countries where Merlo is a market leader



MOVIMATICA MERLO INFOMOBILITY

Is the new system, conceived and built within the Merlo Group, for managing vehicles: it enables GPS radio-localisation in real time, monitoring operation and use, receive and manage malfunction or burglar alarms and also send commands for handling events via the internet.



THE MERLO WORLD

In a globalised world, **the customer always comes first!**

From excellent products to excellent service. In 2008, Merlo has adapted its production process to meet the needs of the ISO 9001 quality control system. The process is perfected and improved continuously.

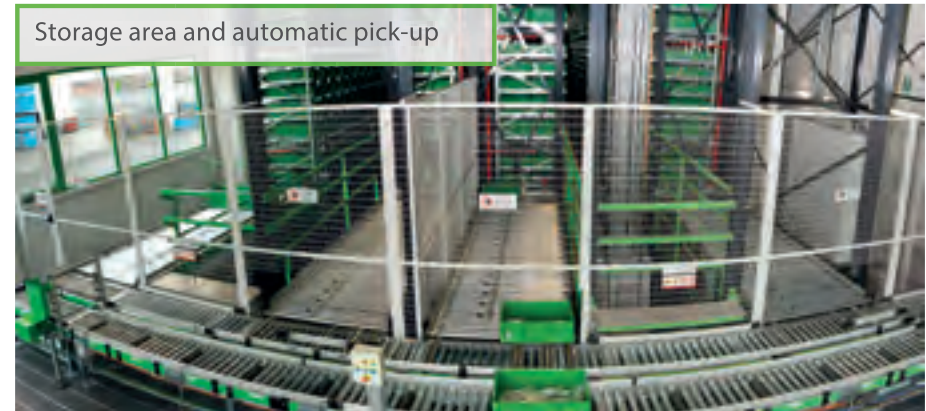
At the same time, the foundations have been laid to put the Customer first, implementing investments aimed at Services such as Financing, Training Assistance, Spare parts and Telematic Means such as remote diagnostics, thanks to the Merlo Mobility project.

| Automatic spare parts warehouse | 2011 | 2014 |
|---------------------------------|---------------------|-----------------------|
| Storage volume | 1000 m ³ | 10.000 m ³ |
| Filling | 100% | 85% |
| Percentage of codes managed | 50% | 86% |
| Percentage of Lines managed | 65% | 94% |
| Pick-up time | 90" | 30" |
| Number of codes | 8.000 | 17.000 |

NEW PARTS CENTRE

The new spare parts warehouse covers an area of 7,000 m², with storage capacity for of 10,000 m³ for a total of 20,000 different codes. Furthermore, it can automatically manage 94% of the order lines that are processed daily, with an average withdrawal time of 30" per line.

The first fill per order line is over 99% with delivery times for urgent orders within 24 hours.



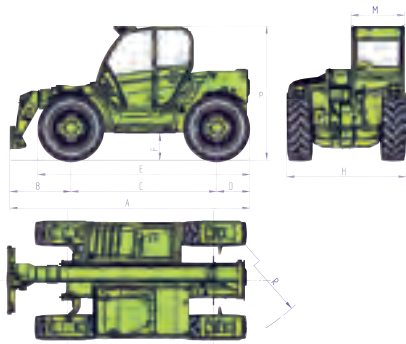
Order processing and shipment area

| TECHNICAL INFORMATION | TURBOFARMER 38.7 | | | | | | | TURBOFARMER 38.10 | | | | | | | | | | TURBOFARMER 42.7 | | | | |
|--|--------------------|----------------|-------------------|-------------------------|-------------------------------|-------------------|----------------------|---------------------|-----------------|--------------------|--------------------------|--------------------------------|-----------------|---------------------|--------------------------------|---------------------|-----------------------|----------------------------------|----------------|-------------------|-------------------------------|---------------------------------|
| | TF 38.7 120 (G) | TF 38.7 120 | TF 38.7 CS 120 | TF 38.7-120 CVTronic | TF 38.7 CS-120 CVTronic | TF 38.7 TT 120 | TF 38.7 TT CS 120 | TF 38.10 120 (G) | TF 38.10 120 | TF 38.10 CS 120 | TF 38.10 120 CVTronic | TF 38.10 CS-120 CVTronic | TF 38.10 156 | TF 38.10 CS -156 | TF 38.10 CS-156 CVTronic | TF 38.10 TT -120 | TF 38.10 TT CS-120 | TF 38.10TT CS-156 CVTronic | TF 42.7 156 | TF 42.7 CS 156 | TF 42.7 CS-156 CVTronic | TF 42.7TT CS-156 CVTronic |
| Total unladen mass, without forks (kg) | 7450 | 7450 | 7450 | 7450 | 7450 | 7900 | 7900 | 7900 | 7900 | 7900 | 7900 | 7900 | 7900 | 7900 | 8350 | 8350 | 8350 | 7450 | 7450 | 7450 | 7900 | |
| Maximum capacity (kg) | 3800 | 3800 | 3800 | 3800 | 3800 | 3800 | 3800 | 3800 | 3800 | 3800 | 3800 | 3800 | 3800 | 3800 | 3800 | 3800 | 3800 | 4200 | 4200 | 4200 | 4200 | |
| Lifting height (m) | 7,1 | 7,1 | 7,1 | 7,1 | 7,1 | 7,1 | 7,1 | 9,6 | 9,6 | 9,6 | 9,6 | 9,6 | 9,6 | 9,6 | 9,6 | 9,6 | 9,6 | 7,1 | 7,1 | 7,1 | 7,1 | |
| Maximum reach (m) | 3,6 | 3,6 | 3,6 | 3,6 | 3,6 | 3,6 | 3,6 | 6,3 | 6,3 | 6,3 | 6,3 | 6,3 | 6,3 | 6,3 | 6,3 | 6,3 | 6,3 | 3,6 | 3,6 | 3,6 | 3,6 | |
| Maximum operating height (m) | 6,2 | 6,2 | 6,2 | 6,2 | 6,2 | 7,1 | 7,1 | 5,7 | 5,7 | 5,7 | 5,7 | 5,7 | 5,7 | 5,7 | 8 | 8 | 8 | 6 | 6 | 6 | 7,1 | |
| Maximum operating reach (m) | 1,75 | 1,75 | 1,75 | 1,75 | 1,75 | 1,75 | 1,75 | 1,6 | 1,6 | 1,6 | 1,6 | 1,6 | 1,6 | 1,6 | 1,6 | 1,6 | 1,6 | 1,6 | 1,6 | 1,6 | 1,6 | |
| Capacity at maximum height (kg) | 3500 | 3500 | 3500 | 3500 | 3500 | 3800 | 3800 | 1500 | 1500 | 1500 | 1500 | 1500 | 1500 | 1500 | 3000 | 3000 | 3000 | 3500 | 3500 | 3500 | 4200 | |
| Capacity at maximum reach (kg) | 1600 | 1600 | 1600 | 1600 | 1600 | 1600 | 1600 | 700 | 700 | 700 | 700 | 700 | 700 | 700 | 700 | 700 | 700 | 1600 | 1600 | 1600 | 1600 | |
| Turbo engine (displacement/cylinders) | 3.6/4 | 3.6/4 | 3.6/4 | 3.6/4 | 3.6/4 | 3.6/4 | 3.6/4 | 3.6/4 | 3.6/4 | 3.6/4 | 3.6/4 | 3.6/4 | 4.1/4 | 4.1/4 | 4.1/4 | 3.6/4 | 3.6/4 | 4.1/4 | 4.1/4 | 4.1/4 | 4.1/4 | 4.1/4 |
| Tier 4 Interim engine power (kW/CV) | 90/122 | 90/122 | 90/122 | 90/122 | 90/122 | 90/122 | 90/122 | 90/122 | 90/122 | 90/122 | 90/122 | 90/122 | 115/156 | 115/156 | 115/156 | 90/122 | 90/122 | 115/156 | 115/156 | 115/156 | 115/156 | 115/156 |
| Maximum speed (km/h) | 40 | 40 | 40 | 40 | 40 | 40 | 40 | 40 | 40 | 40 | 40 | 40 | 40 | 40 | 40 | 40 | 40 | 40 | 40 | 40 | 40 | |
| BSS hydro-pneumatic boom suspension | ○ | ○ | ○ | ○ | ○ | ○ | ○ | ○ | ○ | ○ | ○ | ○ | ○ | ○ | ○ | ○ | ○ | ○ | ○ | ○ | ○ | |
| Fuel tank (l) | 140 | 140 | 140 | 140 | 140 | 140 | 140 | 140 | 140 | 140 | 140 | 140 | 140 | 140 | 140 | 140 | 140 | 140 | 140 | 140 | 140 | |
| Hydraulic gear pump (bar-l/min)/(bar-l/min) ⁽¹⁾ | 210/136 | - | - | - | - | - | - | 210/136 | - | - | - | - | - | - | - | - | - | - | - | - | - | |
| Hydraulic Load-Sensing pump (bar-l/min) ⁽¹⁾ | - | 210/171 | 210/171 | 210/171 | 210/171 | 210/171 | 210/171 | - | 210/171 | 210/171 | 210/171 | 210/171 | 210/178 | 210/178 | 210/178 | 210/171 | 210/171 | 210/178 | 210/178 | 210/178 | 210/178 | 210/178 |
| Fan Drive Pump (l/min) | 46 | 46 | 46 | 46 | 46 | 46 | 46 | 46 | 46 | 46 | 46 | 46 | 48 | 48 | 48 | 46 | 46 | 48 | 48 | 48 | 48 | 48 |
| Flow Sharing Distributor | - | ○ | ● | ○ | ● | ○ | ○ | - | ○ | ● | ○ | ● | ○ | ● | ○ | ○ | ● | ○ | ● | ● | ● | |
| Hydraulic oil tank (l) | 100 | 100 | 100 | 100 | 100 | 100 | 100 | 100 | 100 | 100 | 100 | 100 | 100 | 100 | 100 | 100 | 100 | 100 | 100 | 100 | 100 | |
| FOPS (ISO 3449) and ROPS (ISO 3471) cab | ● | ● | ● | ● | ● | ● | ● | ● | ● | ● | ● | ● | ● | ● | ● | ● | ● | ● | ● | ● | ● | |
| Electromechanical joystick | ● | ● | - | ● | - | ● | ● | ● | ● | - | ● | - | ● | - | ● | ● | - | ● | - | - | - | |
| Electronic joystick | ○ | ○ | ● | ○ | ● | ○ | ○ | ○ | ○ | ● | ○ | ● | ○ | ● | ○ | ○ | ● | ○ | ● | ● | ● | |
| Hydrostatic transmission | ● | ● | ● | ● | ● | ● | ● | ● | ● | ● | ● | ● | ● | ● | ● | ● | ● | ● | ● | ● | ● | |
| Differential lock (A-P) | ○ | ○ | ○ | ○ | ○ | ○ | ○ | ○ | ○ | ○ | ○ | ○ | ○ | ○ | ○ | ○ | ○ | ○ | ○ | ○ | ○ | |
| Dual Control Reverse Shuttle (joystick/steering wheel) | ● | ● | ● | ● | ● | ● | ● | ● | ● | ● | ● | ● | ● | ● | ● | ● | ● | ● | ● | ● | ● | |
| Inching Control progress control from pedal | ● | ● | ● | ● | ● | ● | ● | ● | ● | ● | ● | ● | ● | ● | ● | ● | ● | ● | ● | ● | ● | |
| Permanent four-wheel drive | ● | ● | ● | ● | ● | ● | ● | ● | ● | ● | ● | ● | ● | ● | ● | ● | ● | ● | ● | ● | ● | |
| Four-wheel steering | ● | ● | ● | ● | ● | ● | ● | ● | ● | ● | ● | ● | ● | ● | ● | ● | ● | ● | ● | ● | ● | |
| Automatic parking brake (when the engine switches off) | ● | ● | ● | ● | ● | ● | ● | ● | ● | ● | ● | ● | ● | ● | ● | ● | ● | ● | ● | ● | ● | |
| Work headlights on cab (2 A + 2 P) | ○ | ● | ● | ● | ● | ● | ● | ○ | ● | ● | ● | ● | ● | ● | ● | ● | ● | ● | ● | ● | ● | |
| LED work headlights on cab | ○ | ○ | ○ | ○ | ○ | ○ | ○ | ○ | ○ | ○ | ○ | ○ | ○ | ○ | ○ | ○ | ○ | ○ | ○ | ○ | ○ | |
| Change of speed | 2 speeds | 2 speeds | 2 speeds | CVTronic | CVTronic | 2 speeds | 2 speeds | 2 speeds | 2 speeds | 2 speeds | CVTronic | CVTronic | 2 speeds | 2 speeds | CVTronic | 2 speeds | 2 speeds | CVTronic | 2 speeds | 2 speeds | CVTronic | CVTronic |
| "CS" Suspended cab | - | - | ● | - | ● | - | ● | - | - | ● | - | ● | - | ● | ● | - | ● | ● | - | ● | ● | |
| Tilting chassis + Lateral shift | - | - | - | - | - | ● | ● | - | - | - | - | - | - | - | ● | ● | ● | - | - | - | ● | |
| EPD Eco Power Drive | Series | Series | Top | Series | Top | Series | Series | Series | Series | Top | Series | Top | Plus | Top | Top | Series | Series | Top | Plus | Top | Top | Top |
| Mechanical PTO (540/1000) | ○ | ○ | ○ | ○ | ○ | ○ | ○ | ○ | ○ | ○ | ○ | ○ | ○ | ○ | ○ | ○ | ○ | ○ | ○ | ○ | ○ | |
| Load dynamic control M CDC / M CDC LIGHT ⁽²⁾ | LIGHT | ● | ● | ● | ● | ● | ● | LIGHT | ● | ● | ● | ● | ● | ● | ● | ● | ● | ● | ● | ● | ● | |
| Standard tyres | 405/70-24 | 405/70-24 | 405/70-24 | 405/70-24 | 405/70-24 | 405/70-24 | 405/70-24 | 405/70-24 | 405/70-24 | 405/70-24 | 405/70-24 | 405/70-24 | 405/70-24 | 405/70-24 | 405/70-24 | 405/70-24 | 405/70-24 | 405/70-24 | 405/70-24 | 405/70-24 | 405/70-24 | |
| Type approval as an agricultural tractor | ○ | ○ | ○ | ○ | ○ | ○ | ○ | ○ | ○ | ○ | ○ | ○ | ○ | ○ | ○ | ○ | ○ | ○ | ○ | ○ | ○ | |

(1) Oil flow dedicated to gear pump arm 90 l/min; engine 122 HP 125 l/min; Engine 156 HP 130 l/min; (2) M CDC LIGHT with "traffic light" in cab, without: display, automatic attachment recognition (not compatible with the person-carrying platform).

● As standard. ○ On request.

TECHNICAL INFORMATION

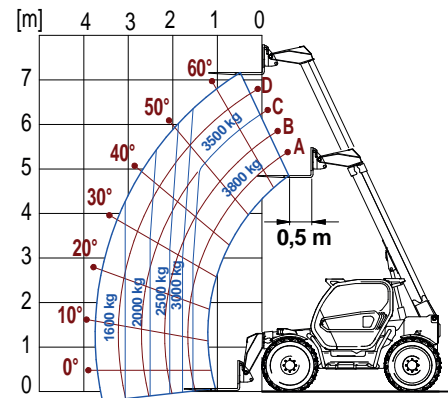


TURBOFARMER II DIMENSIONS

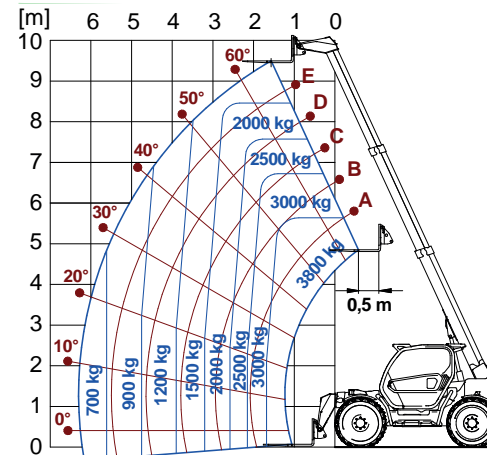
| | |
|--------|------------|
| A (mm) | 4487 |
| B (mm) | 1150/1100* |
| C (mm) | 2750/2800* |
| D (mm) | 587 |
| E (mm) | 3926/3976* |
| F (mm) | 460 |
| H (mm) | 2250 |
| M (mm) | 995 |
| P (mm) | 2465** |
| R (mm) | 3985 |

* TT version - ** CS version with deactivated cab

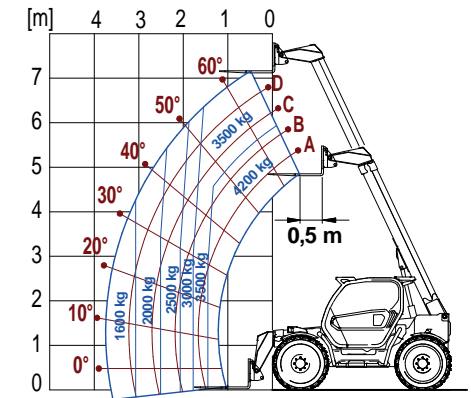
TF 38.7 WITH FORKS



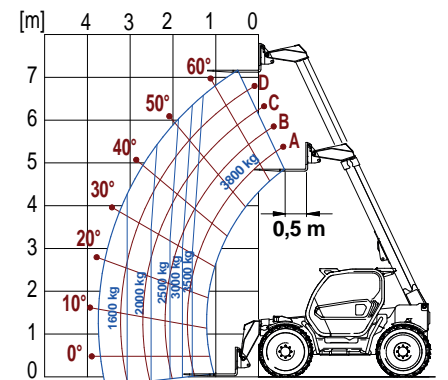
TF 38.10 WITH FORKS



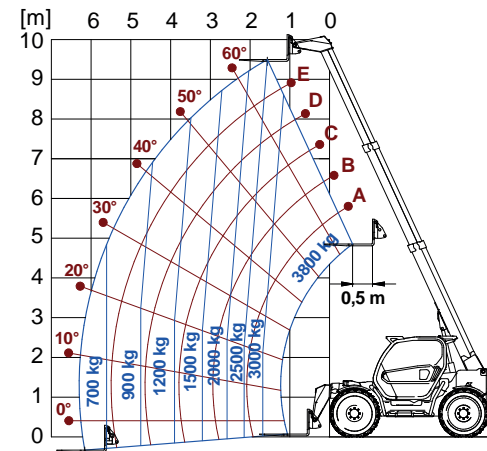
TF 42.7 WITH FORKS



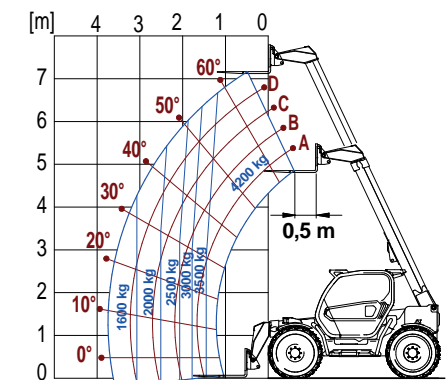
TF 38.7 TT WITH FORKS



TF 38.10 TT WITH FORKS



TF 42.7 TT WITH FORKS



50 YEARS OF CONSTANT COMMITMENT TO WORKING TOGETHER WITH YOU

- 1964** - Establishment of the Merlo Group
- 1966** - DM and DBM: the first dumper and the first self-loading concrete mixer
- 1981** - SM: the world's first telescopic handler
- 1987** - Panoramic: the world's first telehandler with side engine
- 1991** - Roto: the world's first telehandler with rotating turret
- 1996** - Turbofarmer: the first telehandler in Europe type-approved as an agricultural tractor
- 1998** - P26: the ultra-compact telehandlers
- 2000** - Multifarmer: the first agricultural tractor with telescopic boom
- 2001** - MM: the first forestry attachment-carrier
- 2010** - Hybrid: the first diesel/electric hybrid telehandler
- 2012** - Modular: a new concept of telescopic handler
- 2013** - Three important awards at the Agritechnica in Hanover:
 - Hybrid 42.7: gold medal for technological innovation
 - Turbofarmer II range: machine of the year 2014
 - Multifarmer 40.9: a milestone in agricultural machinery



MERLO S.P.A.

Via Nazionale, 9 - 12010 S. Defendente di Cervasca - Cuneo - Italia

Tel. +39 0171 614111 - Fax +39 0171 684101

www.merlo.com - info@merlo.com

The Telehandlers outlined in this documentation can be equipped with optional or special accessories that are not included in standard equipment but only on request.

In certain countries, not all models or attachments may be available because of market or regulatory restrictions.

Technical data and information are up-to-date at the time of printing this documentation. Merlo reserves the right to make modifications arising from natural technological evolution without any obligation on its part.

Your trusted Merlo Dealer will be delighted to provide you with all updates concerning our products and services.