

Spring Lake Association



2018 lake calendar

January 28
WINTER SOCIAL

February 17
PROGRESSIVE APPETIZER

April 22
ANNUAL MEETING

May 24
ADULT FLOTILLA

July 21
SUMMER CONCERT

July 29
FAMILY FLOTILLA

August 19
ANNUAL PICNIC

October 13
BONFIRE AT THE PARK

Aluminum Sulfate to the rescue

A Phosphorous "Trap" for Spring Lake

Algae growth depends primarily on one specific nutrient: phosphorus. Phosphorus enters the lake from stormwater runoff, streams and ditches. After years of accumulation, phosphorus builds up in the sediments on the bottom of the lake, providing an additional, internal source of food for algae.

In order to help control the phosphorus, an aluminum sulfate (alum) treatment on Spring Lake was completed in 2013. Alum grabs onto and "traps" the phosphorus in the water column and sinks to blanket the bottom of the lake, which prevents it from being used by algae.

The very successful treatment in 2013 resulted in significant improvements to water quality in the lake and led to fewer algae blooms and clearer water in the subsequent years. However, alum treatments are only a short-term solution for Spring Lake. Following an alum treatment, water quality improves initially but declines over time.

Diane Lynch, Prior Lake-Spring Lake Watershed District Administrator explained that the long-term goal of the treatment is to temporarily manage the phosphorus level while more permanent solutions are implemented to reduce the phosphorus coming into the lake.

The alum treatment plan for Spring Lake called for two more doses of alum, spaced out every three years, or until an additional treatment is necessary. In both 2015 and 2016, the District conducted an analysis to see if an alum treatment in the following year was warranted. Given the favorable water quality monitoring results, it was determined that an alum treatment was not necessary during those years.

"The results from the 2017 analysis indicate it's time for the second dose of alum" explained Ms. Lynch. "This spring, the Watershed District will be completing an alum treatment on Spring Lake."



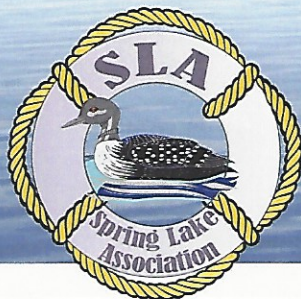
Administrator
Diane Lynch

Weather, especially wind, can delay progress, but if all goes well, the treatment is expected to take about five days. The lake will still be open for public use during the treatment, but the lake access will be busy as that will serve as a temporary storage site for a large boat and other alum treatment equipment.

To find out more about the 2018 Alum Treatment, please visit the Watershed District's website at: www.plslwd.org.



HAB Aquatic Solutions, Inc., is shown dosing Spring Lake with Aluminum Sulfate.



Jim Lally and Christian Morkeberg Win Watershed Awards

Spring Lake Residents Improve Water Quality

Since 2016, the Prior Lake-Spring Lake Watershed District's Citizen Advisory Committee (CAC) has recognized exceptional efforts by private citizens to improve water quality with its Water Quality Improvements Award.

When reviewing this year's nominees, Jodi See, co-chair of the award, said she was "inspired by the actions these individuals took to protect water quality in our lakes."



Jodi See

Spring Lake residents James Lally and Christian Morkeberg were two out of four recipients honored with the 2017 Water Quality Improvement Award which included a \$500 prize. Jim Lally

received the award for a raingarden that soaks up and slows down stormwater

runoff, reducing erosion and trapping pollutants before they reach Spring Lake.

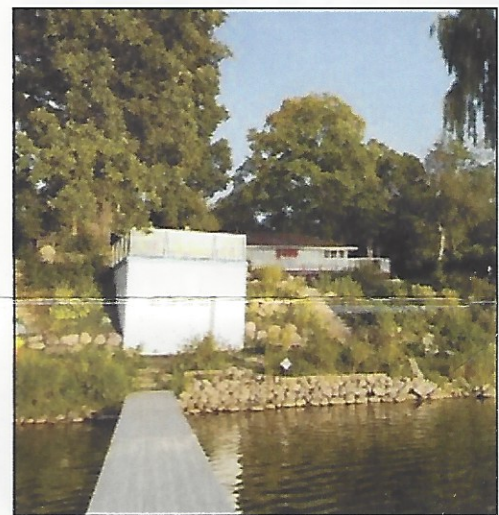
Christian Morkeberg received the award for two projects on his property. He transformed his backyard into a water quality tool and a colorful wildlife sanctuary, planting nearly his entire hillside with native plants down to the lake. On the other, Christian installed a raingarden on his property, capturing stormwater runoff before it reaches the lake. (Christian's project is at right.)

"We applaud their devotion to the environment and to their communities," said Ms. See.

Local residents interested in completing a water quality project on their own property are encouraged to contact the Prior Lake-Spring Lake Watershed District. The district office can help walk landowners through the necessary steps

and provide applicants with cost-share opportunities.

To learn more contact the Prior Lake-Spring Lake Watershed District at 952-447-4166 or find more information on their website, www.plslwd.org.



Lakeshore Prices Reach Record Highs in 2017

In 2017, the seven county metro area saw a 6.2% increase in its median sales price for single family homes, with Scott County increasing by 5.7%, while Prior Lake's increase was 4.8%, according to Spring Lake resident and Realtor Lauren Peters.

The median home price on Scott County lakeshore, however increased to a record high of \$606,000, a 20% increase over 2016 and that's good news for Spring Lake lakeshore homeowners.

Mr. Peters said the market was impacted with a low housing supply resulting in a sellers' market. Homes priced under \$300,000 seem to disappear as soon as they hit the market. The price range between \$300,000 to \$500,000 continues to be a seller's market, however this bracket gains additional inventory due to new construction.

The playing field for buyers and sellers seems to even out when you look at homes over \$500,000, however, the lakeshore market still gives the edge to sellers.

"Scott County lakeshore typically sold in 22 days with Spring Lake reporting sale prices ranging from \$305,000 to \$664,500," Mr. Peters continued. "Spring Lake had seven closed sales which is the lowest number since 2014 while the peak in sales numbers on Spring was 14 closed sales in 2015."

What's in store for 2018? Real estate experts predict a 3.4% increase for Minnesota this year. Interests rates, however, are expected to increase slightly, by year end, to 4.5%, still historically good. It is believed there will continue to be a strong market for lakeshore, though he says it would be hard to predict another 20% increase for Scott County lakeshore.

To find out what your home is worth, its best to contact a real estate professional who is knowledgeable about the area.

Lauren Peters is a Realtor with RE/MAX Preferred of Prior Lake, and a Spring Lake lakeshore homeowner since 1999 and currently resides on South Shore Drive.

Spring Lake

A New Year and a New Look for Raymond Park

The Prior Lake-Spring Lake Watershed District partnered with Prior Lake, Spring Lake Township and Great River Greening to complete an ambitious restoration project at the park, located on the south side of Spring Lake.

That project drew praise from retired DFL state Senator Bob Lessard of International Falls. The longtime legislator was the driving force behind establishment of the Lessard-Sams Outdoor Heritage Council which partially funded the local project.

The project includes four main components working together in harmony to provide water quality and habitat benefits to Spring Lake.

1) **Oak Savanna restoration:** The outstretching branches of the oaks in the park provide a clue that this area was once an oak savanna. Since the area was developed, natural wildfires were suppressed, providing an opportunity for non-native buckthorn to take over the park. Once the buckthorn was removed from the park last year the oak savanna and shoreline were seeded with a mix of native grass and flowering species selected specifically for the site.

2) **Shoreline restoration:** The shoreline contained buckthorn, as well as non-native grasses and invasive plants with shallow roots that didn't prevent erosion. Undesirable plants were removed and native, deep-rooted and flowering plants were seeded.

3) **Beach community restoration:** After the existing invasive species along the beach were removed, the area was seeded with native plant species. Students from the EcoTeam and AP Environmental Science class at Prior Lake High School planted plugs of native species to supplement the seeding. Due to the sand, that vegetation will be purposely sparser than a typical shoreline restoration.



"This is why we put forth this legislation and I commend your local governmental entities and the Spring Lake Association for all your great work."

Retired Senator Bob Lessard

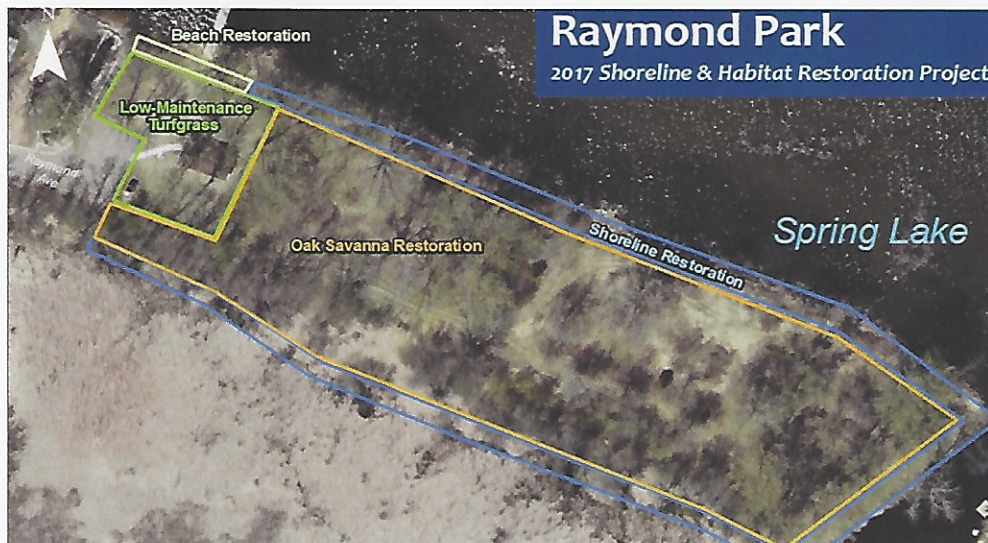
4) **Grassland restoration:** The turf grass around the picnic shelter was killed off and re-seeded with a low-

maintenance grass mix which only needs to be mowed 3-4 times a year and should not require pesticides or fertilizers. This will save money on turf maintenance and reduce the chemicals and nutrients reaching the lake.

The initial restoration work is practically complete. Great River Greening's crew will conduct follow-up maintenance, including invasive species removal and additional seeding as needed over the next two years while the native plants become established.

Cost-share opportunities are available for shoreline restoration projects through the Watershed District. More information about the project and cost-share can be found at www.plslwd.org.

This project was partially funded by a Conservation Partners Legacy grant sponsored by the DNR and the Lessard-Sams Outdoor Heritage Council.



**Great Outdoors
Dock & Lift**

**DOCK & BOAT LIFT SALES
REMOVAL and INSTALL
BARGE SERVICES
BOAT STORAGE
BOAT WINTERIZING & SERVICE**

SHOREMASTER



612-470-DOCK

Association

Water Pump Grants

Sprinkle With Lake Water

The Prior Lake-Spring Lake Watershed District provides new incentives for practices that protect and improve the quality of water resources located in the District's jurisdictional area. To decrease the pressure on the local aquifer and also lower residents' water bills, lakeshore owners are being offered a grant from the District to offset the cost of a lawn sprinkler water pump by covering 50% of the cost, up to \$150.

Watering from the lake is better for lawns and also reduces peak summer demand on city pumps, treatment facilities and water towers.

Interested lakeshore residents are encouraged to contact the Watershed District at 952-440-4166 or go to www.plslwd.org and click the "Get Involved" link to complete an application.

ERIK WESTRUM

14033 Commerce Avenue NE
Suite 102, Prior Lake

952-447-8700

Auto Insurance
Home Insurance
Property Insurance
Business Insurance
Life Insurance
Health Insurance
Banking Products
Annuities
Mutual Funds

 State Farm™

Record Keeping on Spring Lake

One of the sweetest charms of lake life is to watch the change of seasons. Many Spring Lake Association members track seasonal changes through monitoring the status of the "ice-in" and "ice-out." That includes SLA member Maureen Reeder who says in early winter, ice-in brings the hilarity of watching landing ducks skid across the thin ice when they misjudge the liquidity of the lake. Ice-out, meanwhile, is often predicted by the joy of returning Purple Martin scouts.

"When we moved into our home on Spring Lake in 1993, a previous resident had left a carefully typed sheet of 21 years of ice-in and ice-out records for Spring Lake. The elderly gentleman also left detailed notes about his fishing conquests (a 14-pound Northern caught in December 1979) and, he carefully tracked the return of Purple Martin scouts," explained Ms. Reeder. "We felt duty bound to keep this up, but quickly learned ice-in and ice-out is in the eye of the beholder."



Maureen Reeder

Maureen asked herself if she should call ice-in when she looks out her window and all the lake is covered in ice? Or does she need to drive around the entire lake before declaring ice-in? And what happens when the lake freezes and then all the ice melts before declaring ice-in? And what happens when the lake freezes and then all the ice melts the next day (like last year)?

Given these disclaimers, Maureen says a total of 45-years of record keeping for Spring Lake reveals these extremes:

Ice-In: earliest November 16, 1976; latest December 28, 2015.

Ice-out: earliest March 7, 2017 (and then the lake re-froze); latest April 26, 1975.

The Minnesota Department of Natural Resources (DNR) provides some guidelines for tracking ice, but says what is most important is for the tracker to be consistent – use the same criteria every year. The DNR keeps detailed ice records for some Minnesota Lakes, but only has records back to 2009 for Spring Lake. The Prior Lake-Spring Lake Watershed District (PLSLWD) records also date only to 2009 for Spring Lake.



Mr. Duck

Kathryn Keller-Miller, PLSLWD outreach specialist said keeping ice out records may help answer questions related to climate change. Records also measure ice impacts to the lake, fish and vegetation growth, parts of the lake system and recreational planning.

Kathryn expressed interest in Maureen's nearly half-century of records for and asked her to stop by and share them. They would now like others who may have such records to share them with the Watershed District as well. There is a role for volunteers to track ice-in and ice-out explained Ms. Reeder and she encouraged residents to reach out to PLSLWD if interested.



PRESIDENT Dan Kelly

VICE PRESIDENT Conrad Ketelsen

SECRETARY Kerry Schmid

TREASURER Jeff Will

COMMUNICATIONS Tim Bruss

BOARD OF DIRECTORS

Jaime Berry, Dan Field, Christian Morkeberg, Alex Nelson, Tad Tewes

HISTORIAN/PHOTOGRAPHER

Camille Will

WEBSITE www.springlakeassociation.org

EMAIL board.sla@gmail.com

SLA BOARD MEETINGS

Typically held the second Monday of each month. Always check the calendar to verify times.

ANNUAL MEETING

April 22, 6 p.m., The Wilds

2018 EVENTS

WINTER SOCIAL

January 28, 2-5 p.m., The Pointe
This second annual event is strictly a social encouraging wintertime comradery with your Spring Lake neighbors.

PROGRESSIVE APPETIZER

February 17, 1 - 5 p.m.
This progressive household event will include stops for appetizers and refreshments (BYOB) at the following three residences: Auringers, Roldnings and Sauves. Travel to all three via car, snowmobile, skis or snowshoes for this indoor and outdoor event featuring winter golf, bonfires and more.

ANNUAL MEETING

April 22, 6 p.m., The Wilds
Various speakers will highlight this yearly get-together with appetizers served by the SLA. Cash bar available.

ADULT FLOTILLA

May 24, 6 p.m.
Bring an appetizer to share and your own refreshments for this adult only on the lake Thursday evening party.

SUMMER CONCERT

July 21, 6 - 9 p.m., Raymond Park
The cover band Bootleg will be entertaining on stage at this event hosted by the SLA and SLA sponsors.

FAMILY FLOTILLA

July 29, 1 p.m.
Bring the entire family, along with an appetizer to share (BYOB) when we tie-up together for an afternoon of socializing.

ANNUAL PICNIC

August 19, Noon, Raymond Park
Food will be provided for our annual summer gathering with entertainment to include the dunk tank, bean bag tournament and more. (BYOB).

BONFIRE AND SMORES BAR

October 13, 6 p.m., Raymond Park
Bring your own refreshments while the SLA serves up chocolates at the Smores Bar for all members of your boating family.

SPRING LAKE ASSOCIATION PRESIDENT DAN KELLY



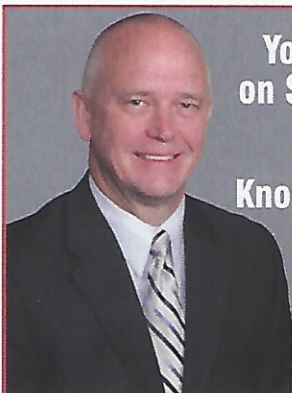
A BUSY YEAR ON SPRING LAKE!

2017 marked another great year for the Spring Lake Association (SLA) and an eventful year on Spring Lake. 2017 could be known as the year of upgrades including a very successful carp seining, upgrading Raymond Park and ending with the rebuilding of the public boat access. It sounds like that upgrading could roll over into 2018 with talks of additional carp seining and a possible second Alum treatment on the horizon. As always SLA will keep you updated as we learn more on efforts that impact Spring Lake.

We had another great year of events including flotillas, summer picnic, winter social, annual meeting, 4th of July activities and more and attendance was phenomenal. SLA also saw record membership passing 70 households as we now have a third of the homes on the lake as members. Based on the increased membership and creation of several committees SLA has some great things in store for 2018 as we push to *hit the 100 member mark.*

SLA would like to invite everyone to attend our Annual Meeting Sunday, April 22nd at the Wild's Clubhouse from 6 - 8 p.m. This is a great opportunity to learn more about SLA, enjoy some complimentary appetizers, meet others on and around the lake and renew your 2018 membership.

The Spring Lake Association hopes to see everyone at one of our events throughout the year! Here's to a great 2018 on Spring Lake!



Your Neighbor on Spring Lake.

Trusted. Knowledgeable. Committed to You!

RE/MAX PREFERRED

LAUREN PETERS

Your Local RE/MAX PREFERRED Agent

612-751-9620

LaurenPetersRealtor.com

**30 Transactions
On Spring Lake!**



Jim Gilbertson
612-743-8787

Edina Realty

jimgilbertson@edinarealty.com



P.O. Box 631
Prior Lake, MN 55372

**Are your lake neighbors
Lake Association members?**

Everyone who lives on Spring Lake or who uses our valuable natural resource should be a dues-paying member, don't you think?

Encourage your neighbors to join us for just \$30 per family, per year!

adventures.polaris.com



UNFORGETTABLE EXPERIENCES

A premium network of ride and drive destinations nationwide

SAFE. MEMORABLE. ADVENTURES.

SLA ANNUAL MEETING APRIL 22

Residents interested in the environment of Spring Lake are encouraged to attend the SLA Annual Meeting at 6 p.m., Sunday, April 22 at the Wild's Clubhouse.

" SPRING LAKE INFORMATION "

1972-----	Lake frozen over on November 28th
1973-----	Ice out of lake on March 27th. Lake frozen over on November 29th
1974-----	Lake frozen over Dec. 1st.----- Ice out of lake on April 15th. ---
1975-----	Lake frozen over November, 26th.--- Ice out of lake on April, 26th.
1976-----	Lake frozen over on November 16th. Ice out of lake on March 31st.
1977-----	Lake frozen over on November 27th. Ice out of lake on March 28th.
1978-----	Lake frozen over on November 21st. Ice out of lake on April 8th.-----
1979-----	Lake frozen over on November 30th. Ice out of lake on April 19th.
1980-----	Lake frozen over on November 30th. Ice out of lake on April 14th.

Many Spring Lake Association members track seasonal changes by monitoring the status of the lake's "ice-in" and "ice-out" dates. Maureen Reeder has been logging such information since she moved onto Spring Lake in 1999. Her records supplement the previous home owner's 23 years of lake records and footnotes, a portion shown on the left. Read more about her research inside.

Spring Lake Association Membership Form

Please make your check payable to Spring Lake Association

Name: _____ Email: _____

Address: _____ City: _____ State: _____ Zip: _____ Phone: _____

Dues: \$30 per household per year (Valid until April 2019)

Additional donation I would like to help with _____

Please return to: Spring Lake Association, P.O. Box 631, Prior Lake, MN 55372