

[Casambi Summit Support](#)

[Specification area](#)

[Resources](#)

[Tutorial videos](#)

[Training](#)

CASAMBI

[Why Casambi?](#)

[Ecosystem](#)

[Projects](#)

[About us](#)

[Blog](#)

[Contact](#)

Casambi solution

Learn more about the cornerstones of the Casambi solution

Bluetooth Low Energy

The Casambi solution is based on Bluetooth Low Energy, the state-of-the-art wireless technology and the only low power wireless technology in all modern smartphones and tablets, making it the only mainstream and future-proof low power radio technology in the world.

Bluetooth Low Energy was developed at Nokia Research Center where the founders of Casambi worked. That's why Casambi has had the unique advantage in realizing the potential of Bluetooth Low Energy early on. Casambi started the development of the solution before there were any Bluetooth Low Energy devices on the market.

Wireless Mesh Network

On top of Bluetooth Low Energy, the Casambi technology provides a mesh network where all the intelligence of the system is replicated in every node and, in such a way, creates a system with no single points of failure.

Such self-organizing wireless mesh network can control a large number of fixtures from any point. It also allows for firmware updates over the network, allowing any kind of changes to be made over-the-air. In this kind of fully distributed and symmetric architecture, any unit can go offline and catch up from others when they return back online.

The Casambi devices are smart on their own and only connected when needed. An Internet connection is not necessary for normal operation, it is just needed for user interface configurations to be sent or recalled from the cloud service.



Casambi App

The Casambi app works as one of the user interfaces in a Casambi lighting control solution, as the commissioning tool and as well as a remote gateway. The Casambi app works with iOS as well as Android devices, like smartphones and tablets. The app is free to download by any end-user.

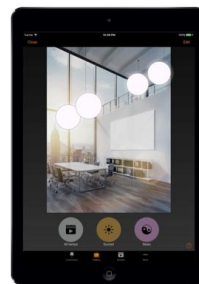
The Casambi app is made by user interface experts and in a way, that anyone – regardless of technical proficiency – can use it. The Casambi lighting control technology gives a possibility for Casambi's partners to implement and develop anything needed for a full-featured lighting control system, but the Casambi app only shows in the user interface the functionality that is relevant to that particular installation. Therefore, the Casambi app is equally well suitable for the professional lighting market as well as the residential field.



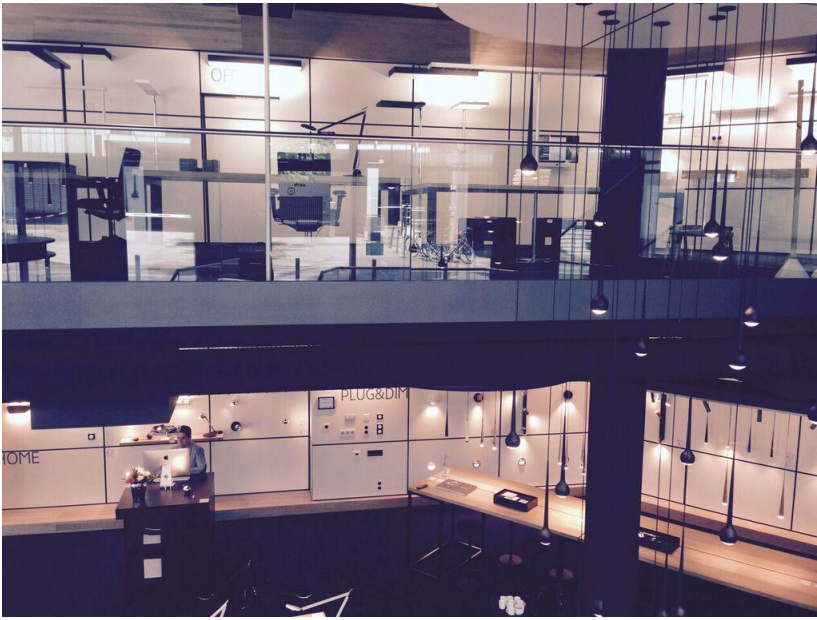
User Interfaces

Casambi offers a big variety of possibilities for a user to interact with the lighting depending on the user's individual requirements. The app for smartphones, tablets and smartwatches is the most elaborated user interface. Besides the app, traditional wall switches, push buttons, Casambi's own scene controllers and many other control points can be used.

Thanks to the Casambi Bluetooth module and the versatile customizable software, all of Casambi's partners can develop their own user interfaces for a Casambi lighting control system. All of the partner products are compatible with each other as well as with all Casambi's native products.



[Learn more](#)



Luminaires

Casambi technology works with any manufacturer's range of existing luminaires or already installed wall switches but can also be easily integrated into LED drivers, LED bulbs or LED modules, creating an optimal solution in terms of ease of installation and functionality with minimal additional hardware and deployment costs.

Casambi collaborates with all the leading luminaire manufacturers.

[See manufacturers](#)

Newsroom



NEWS

New Casambi Cloud Gateway available now

March 7, 2023



BLOG

Power to the Specifier, Part Three: Color Control

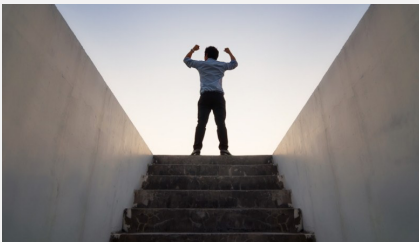
March 7, 2023



BLOG

Lighting Designer and Casambi Award Judge, Yah Li Toh on the intrinsic qualities of light

February 27, 2023



BLOG

Power to the Specifier, Part Two: Less Material

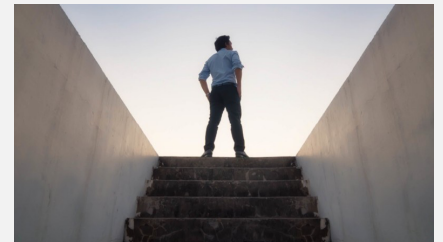
February 22, 2023



NEWS

Casambi welcomes Eclipse as new value-added reseller in Ireland

February 16, 2023



BLOG

Power to the Specifier, Part One: Open Architecture

February 14, 2023

[View all](#)

Casambi Partner

Let's stay in touch!

Subscribe to our newsletter to receive a regular digest of Casambi stories from around the world, info on all upcoming events and the latest product updates.

Casambi processes personal information responsibly. By clicking submit below, you consent to allow Casambi to store and process your personal information as stated in our [privacy policy](#).

Follow us on



Casambi.com	Why Casambi?	Ecosystem	Project gallery	About us	Resources	Subscription center
	Solution	Casambi products	Office	Careers	Blog	
	Functionality	Drivers	Retail	Partners	News	
	Internet of Things	Dimmers	Hospitality	Contact	Support	
	UI	Sensors	Museums & historical buildings		Training	
	Interoperability	Modules	Outdoor			
		Control gear	Wellness			
		Luminaires	Design & installation			
			Residential			