



**35+ Years of
Customer Excellence**



MEM

MEM ENGINEERING PVT LTD
Since 1988

www.memengineering.in

UL/FM Grooved & Threaded Fittings, Valves & Fire Pumps, HVAC Pumping solutions and IS Valves, Pre-Engineered Buildings, General steel structures and Automation for

IT & ITES * Data Centres * Commercial Buildings * Industrial buildings * Healthcare * Pharmaceuticals

UL/FM Approved Fittings, Valve & Pumps

Pre-Engineered Buildings (PEB)

500+ Corporate trusted customers



MEM Introduction



ABOUT US

MEM ENGINEERING PVT LTD is a leading E&M, Automation and PEB (Pre-Engineered Buildings) solutions company that has its Head office in Chennai, Warehouse in Chennai with Sales and Service operations across India, MEM has marquee clients in all the regions of the country. Our customers include global technology leaders and consulting companies that see the value in our products and services. MEM today has the advantage of being part of brands that has a strong track record in product quality and reliability over 30 years.

Our products comply with the highest standards of quality, and we evolve to cater to a changing world around us by innovating constantly. It is our endeavor to help our customer achieve the highest level of comfort by consuming the least amount of energy with an objective to help build a sustainable environment. We take immense pride in collaborating with trusted global partners while still making what we can in India, to create a local ecosystem of partners and suppliers.

OUR VISION

To be a leader in the development of sustainable and innovative mechanical engineering solutions that address the evolving needs of our customers and contribute to a better world

OUR MISSION

To use our expertise in mechanical engineering to design and develop high-quality products and provide building solutions that meet the needs of our customers, while striving for continuous improvement and innovation.



Management Team



Arunachalam K

**Chairman & Managing Director,
Director - National (Pumps)**



GS RAO

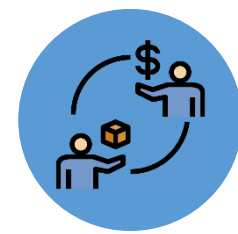
**Director – Operations &
Business Development**

An engineer by background, Founder of “**MEM Engineering**”. His undying passion and desire to do something “new and path breaking”, was the primary reason of the MEM company’s foray into multiple product / business domain serving diverse business segments. The company is today present in **design & manufacturing pre-engineered buildings** systems and an authorised marketing and technology partner with multinational companies like **Armstrong Pumps, National Fittings Ltd, Lehry Valves & Instrumentation**. We are also engaged in Advanced Automation technology for connected factories & buildings.

An Electronics and communication Engineer & Executive Post graduate in business management with over 18 years of experience was working with MNC companies like **L&T, Armstrong, Moog Aerospace, Honeywell**, he has played multiple roles including project & solution sales management, product development, marketing strategies, global business development in the field of **Aerospace, HVAC, BMS, IoT, Manufacturing** etc. Rao is a technocrat at heart and operates like a businessman whose primary focus is to provide customised solutions to the customers.



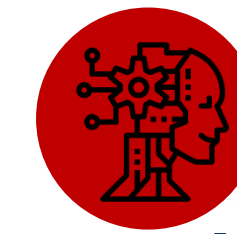
MEM Engineering Milestones



Beacon Weir Pumps
Pumping solutions for Building & Industrial Sectors



National Fittings Limited.
UL/FM Grooved and Threaded Fittings
Armstrong & CRI Pumps
HVAC Pumps & Controls



National Fittings Limited.
Lehry Valves
HVAC, Fire protection & Plumbing Valves
Armstrong
HVAC Pumps / Fire Pumps / Electrical Control Panels

1988

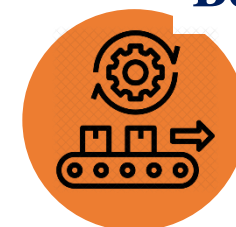
Kirloskar Brothers Limited.
Pumps & Valves – For Domestic, Building, Agriculture & Industrial Sectors

1991



1994

Manufacturing of Floway Diaphragm Valves & Check Valves
Valves supplying to WTP / RO OEMs and User Industries across India



Beacon Weir Pumps

2008 -10

2015 -17

National Fittings Limited.
Fittings & Pumps
Armstrong / CRI / MBH Pumps
HVAC Pumps, Dewatering and Submersible Sewage Pumps



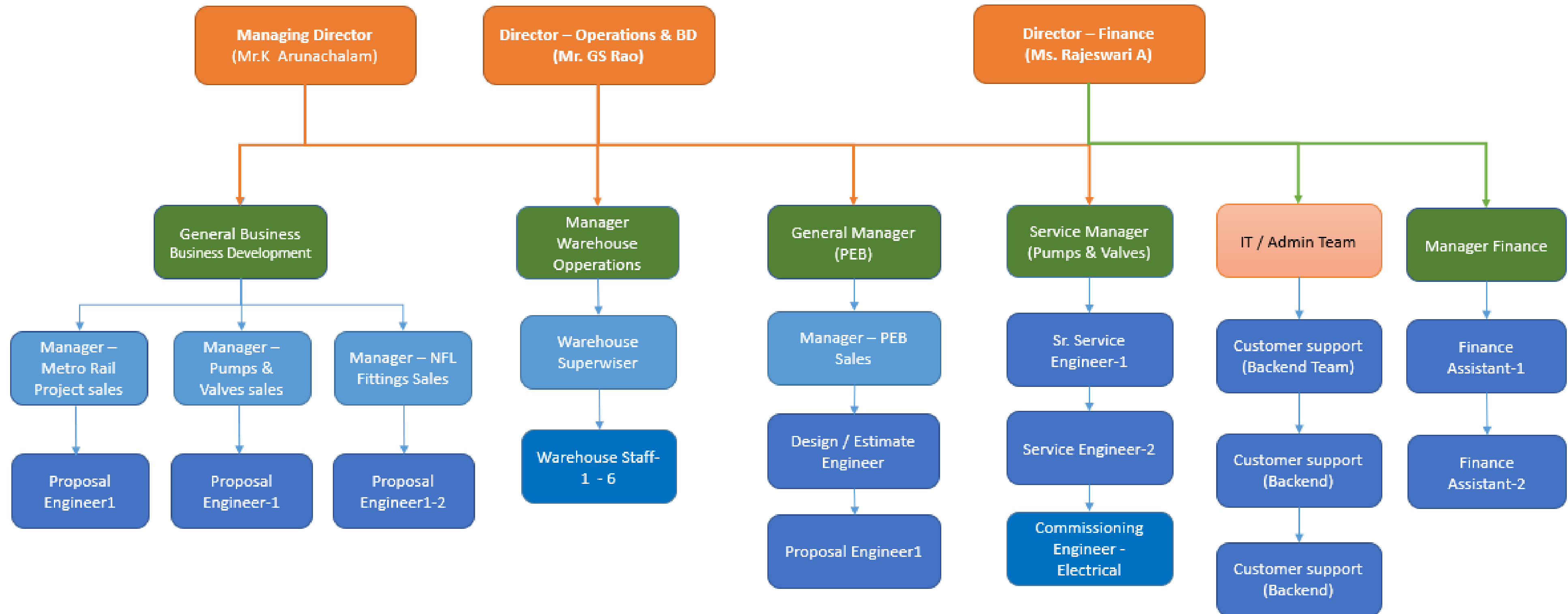
2020



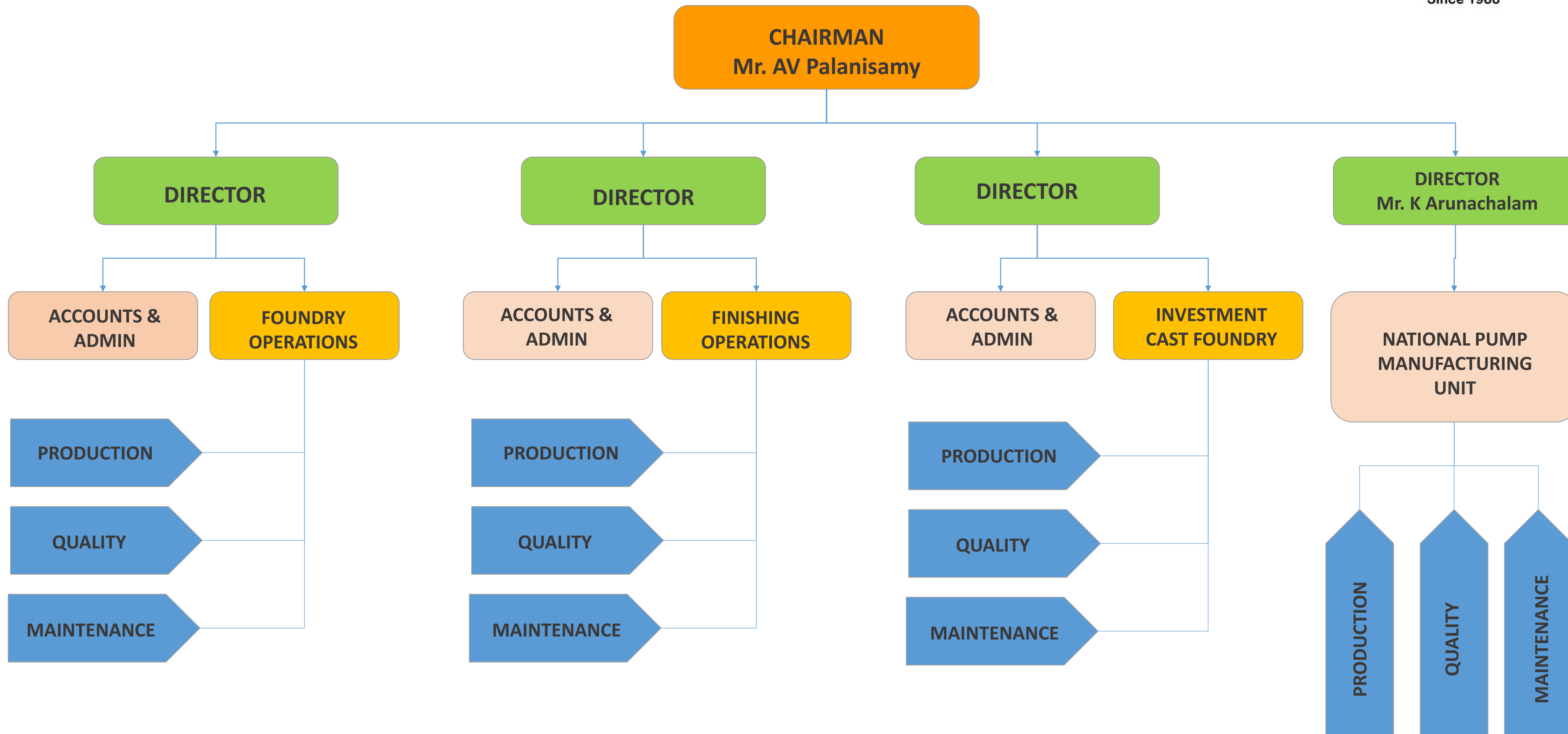
iLEN / Knowledge Lens
An Industry 4.0 IoT solutions for Connected Buildings / BMS / Connected Factories / Smart Manufacturing
PEB & Structures
Pre-Engineered Buildings
General steel structures



MEM Organization Chart



National Fittings Organization Chart





TECHNICALS

NATIONAL UL/FM GROOVED AND THREADED FITTINGS



Grooved technology?



- ✓ Grooved Mechanical Piping Offers a Versatile Pipe-Joining Alternative
- ✓ Two of the most important elements in any construction or upgrade project are safety and speed of completion.
- ✓ While one way to increase safety is to eliminate hot work whenever possible, the reality is that welding is necessary for many tasks around a power plant. However, one area where welding may not always be required is in the installation or expansion of piping systems.
- ✓ Although the pipe-joining method is critical for high-pressure, high-temperature process piping systems, the same cannot be said for balance-of-plant piping systems.
- ✓ Services such as cooling water, reverse osmosis, fire protection, chemical treatment, lube oil, and compressed air can make use of alternative, flame-free joining methods—some of which can offer installation up to 10 times faster than welding.
- ✓ Grooved mechanical piping is one of those alternatives.



Grooved System -A Novel Design



- ✓ Grooved mechanical pipe joint consists of four elements: grooved-end pipe, a gasket, coupling housing, and fasteners.
- ✓ Pipe groove is made by cold forming or machining a groove into the end of a pipe.
- ✓ A gasket enclosed in the coupling housing is placed around two abutted grooved pipe ends, and the key section of the housing engages the grooves.
- ✓ Bolts and nuts are tightened with a socket wrench, or impact wrench, holding the housing segments together.
- ✓ In the installed state, the coupling housing encases the gasket and engages the grooves around the circumference of the pipe to create a leak-tight seal in a self-restrained pipe joint.
- ✓ In addition to pipe-to-pipe joints, grooved couplings can be used to join pipe to grooved-end valves, fittings, and accessories to create a complete piping system.

Why National Fittings ?



- ✓ National Fittings has been a global leading manufacturer of UL / FM Certified Ductile Iron Grooved & Threaded Fittings.
- ✓ National products are tested and listed by UL, ULC and approved by Factory Mutual Organization [FM] and others as listed in this presentation.
- ✓ National has got an integrated manufacturing facility with 3 foundries for castings, 2 Machine shops, 1 Gasket mfg. unit, 1 SS investment casting unit and finishing operation facilities spread across 300,000 sqft. Area.
- ✓ These pipe fittings are being manufactured, Supplied, and exported for four decades to various countries like India, Middle East, North America, Europe, Australia and South America.

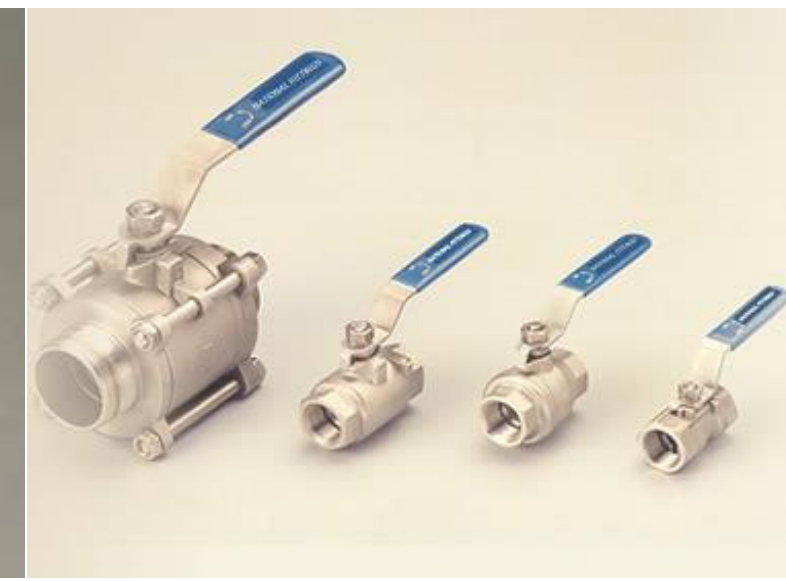


NATIONAL FITTINGS

"A Complete Piping Solution"



- Ductile Iron Grooved Fittings
- Ductile Iron Threaded Fittings
- Ductile Iron Butterfly Valves
- Post Indicators
- Stainless Steel Ball Valves
- Stainless Steel Fittings



Grooved Products Expertise since 1980



- ✓ 1980 – Established in USA
- ✓ 1982 – Production in India under Interfit brand
- ✓ 1982 – UL listing, FM approval for USA operations
- ✓ 1987 – UL listing, FM approval - Indian operations
- ✓ 1987 – Finishing division moved to India from USA
- ✓ 1995 – First to introduce short radius fittings
- ✓ 1995 – Gasket division moved from USA to India
- ✓ 1995 – Started investment castings foundry
- ✓ 1995 – Started production under National brand
- ✓ 2003 – Produced for Anvil (Gruvlock brand)
- ✓ 2006 – First to cast fittings up to 24”
- ✓ 2015 – Expansion of manufacturing capacity

Manufacturing Facility Details



Annual Production Capacity (Grooved Fittings) = 7,500 Tons = 43,00,000 Items

Annual Production Capacity (Grooved Fittings) = 1200 Tons = 7,00,000 Items



- ✓ 190,000 Sq. Ft foundry space across 3 locations
- ✓ 13,000 Tons foundry capacity per year
- ✓ 50,000 Sq. Ft investment casting foundry of 600 Tons
- ✓ 60,000 Sq. Ft machining, assembly and testing
- ✓ 300+ Manpower





National Foundry Units





**National
Manufacturing
ISO
Certification**

ZERTIFIKAT ■ CERTIFICATE ■ CERTIFICADO ■ CERTIFICAT ■
 ЗЕРТИФІКАТ ■ СЕРТИФИКАТ ■ СЕРТИФИКАТО ■ СЕРТИФИКАТ ■
 認證證書 ■ CERTIFICATE ■ ZERTIFIKAT ■



CERTIFICATE

The Certification Body
of TÜV SÜD Management Service GmbH

certifies that

NFL

National Fitting Limited
112, Madhapur Road, Kaniyur Village,
Karumathampatti (Via), Coimbatore - 641 659, Tamil Nadu, INDIA

has established and applies
a Quality Management System for

Design, Manufacture and Supply of Metallic Ball Valves & Pipe Fittings.

An audit was performed, Order No. 4153487925.
Proof has been furnished that the requirements
according to

ISO 9001:2015

are fulfilled.

The certificate is valid from 2021-02-07 until 2024-02-06.
Certificate Registration No.: 12 100 35564 TMS.


 Product Compliance Management
Munich, 2021-01-07




TÜV SÜD Management Service GmbH • Zertifizierungsstelle • Ridlerstraße 65 • 80339 München • Germany
www.tuev-sued.de/certificate-validity-check





NATIONAL FITTINGS



Standards and Approvals

- ✓ ISO 9001 certified
- ✓ FM - Factory Mutual Approved
- ✓ UL & ULc- Underwriters Laboratory Listed
- ✓ CDC / Fire Chief Marshall approvals in many GCC countries
- ✓ ANSI B31.1 and 31.9
- ✓ AWWA C – 606
- ✓ Board of Standards, New York City, USA.
- ✓ Conforms to ASTM F-1476
- ✓ BBA – AS – BV – DNV – DVGW

Quality Control and Testing

- ✓ Quality is inbuilt into every step of the process
- ✓ Inspection happens at regular intervals
- ✓ Inward, process and final UL/FM and Third party inspection at regular intervals.
- ✓ Test facilities available in-house



NFL Product Approvals / Certificates



INDUSTRY AND GOVERNMENT STANDARDS & APPROVALS



ISO 9001



- (ABS) American Bureau of Shipping
- (ANSI) American National Standards Institution
- (AWWA) American Water Works Association : C-606
- (API) American Petroleum Institute
- (ASHRAE) American Society of Heating, Refrigeration & Air Conditioning Engineers
- (ASME) American Society of Mechanical Engineers
- (ASTM) American Society of Testing & Materials
- (BBA) British Board of Agreement
- (BOCA) Building Officials & Code Administrators
- (BMI) Bureau of Marine Inspection
- (BPR) Bureau of Public Roads
- (CDC) Civil Defense Certificate, Dubai
- (COA) Corps of Engineers - CEGS 15000
- (FAA) Federal Aviation administration; HVAC, Plumbing, Fire Protection
- (FHA) Federal Housing Administration
- (FM) Factory Mutual Engineering Corp.
- (IAPMO) International Association of Plumbing & Mechanical Officials
- (MEA) Materials and Equipment acceptance
- (NAVFAC) Naval facilities Engineering Command; NFGS 15000 Series
- (NFPA) National Fire Protection Association
- (NSF) NSF International
- (SBCCI) Southern Building Code Congress International
- (TVA) Tennessee Valley Authority; Fire Protection, Storm drains
- (UL) Underwriter's Laboratories, Inc.
- (ULC) Underwriter's Laboratories of Canada

WORLDWIDE

- (AS) AS 4041 - 1992 Australian Standard (3.24.10)
- (BV) Bureau Veritas
- (DNV) Det Norske Veritas
- (DVGW) Deutscher Verein des Gas-und Wasserfaches





Product Range – Partial Items



MEM ENGINEERING PVT LTD

Since 1988

				
RIGID COUPLING STYLE 5	FLEXIBLE COUPLING STYLE 11	FLEXIBLE COUPLING STYLE 12	REDUCING COUPLING STYLE 25	GROOVED FLANGE STYLE 14
				
MECH. TEE GROOVED STYLE 15	MECH. CROSS STYLE 15 & 16	SPRINKLER OUTLET STYLE 13	90 DEGREE ELBOW STYLE 105	45 DEGREE ELBOW STYLE 106
				
EQUAL TEE STYLE 107 /110	EQUAL CROSS STYLE 135	END CAP STYLE 155 & 150	ECCENTRIC REDUCER STYLE 145	Style 190

BODY & SIZE

Ductile iron ASTM A536
Grade 65 45 12
1" through 32"

FINISH

Red Paint to RAL 3000
Galvanized to ASTM A 153
finish as optional

ELASTOMERS

E P D M & different materials for
differing services and fluids

BOLTS AND NUTS

High tensile electro- galvanized
steel square neck & oval neck types

[More about Ductile Iron with UL and FM Fittings](#) - [Product Installation Videos](#)

Product UL Certificates



CERTIFICATE OF COMPLIANCE

Certificate Number 20151012-EX4259
Report Reference EX4259- 19900522
Issue Date 2015-OCTOBER-12

Issued to: National Fittings Ltd
S F112/3-D, Part Mathapur Rd, Kaniyu Village
Palladam Taluk, Combatore District Tn 641659 INDIA

This is to certify that representative samples of FITTINGS, GROOVED AND PLAIN END
Grooved end ductile iron fittings for use with Listed rubber gasketed fittings for sizes and working pressures as shown below:
Ductile Iron -
Models: Style 100, Style 101, Style 110, Style 111, Style 115, Style 140, Style 150, Style 190, Style 105, Style 106, Style 107, Style 155, Style 1060, Style 1050, Style 1070, Style 1550, Style F105-D, Style F127, Style 135, Style 102, Style 103, Style 115TF, Style 120, Style 140, Style 145 and Style 145TF

Have been investigated by UL in accordance with the Standard(s) indicated on this Certificate.

Standard(s) for Safety: UL 213, UL Standard For Safety For Rubber Gasketed Fittings for Fire-Protection Service
ULC/ORD C213, Rubber Gasketed Fittings for Fire-Protection Service

Additional Information: See the UL Online Certifications Directory at www.ul.com/database for additional information

Only those products bearing the UL Certification Mark should be considered as being covered by UL's Certification and Follow-Up Service.

Look for the UL Certification Mark on the product.


Bruce Mahrenholz, Director North American Certification Program
UL LLC

Any information and documentation involving UL Mark services are provided on behalf of UL LLC (UL) or any authorized licensee of UL. For questions, please contact a local UL Customer Service Representative at <http://ul.com/about/localcenter>



CERTIFICATE OF COMPLIANCE

Certificate Number 20180305-EX4260
Report Reference EX4260-19900522
Issue Date 2018-MARCH-05

Issued to: NATIONAL FITTINGS LTD
S F112/3-D
PART MATHAPUR RD, KANIYU VILLAGE
PALLADAM TALUK
COMBATORE DISTRICT TN 641659 INDIA

This is to certify that representative samples of FITTINGS, RUBBER GASKETED
Rubber-gasketed fitting; Coupling, Models Style 2, Style 5, Style 10, Style 11, Style 12, Style 25, Style 25.
Flange Adapter, Models Style 14, Style 14PN.
Side Outlet, Models 13-U, Style 15G
Style 16, Style 16A

Have been investigated by UL in accordance with the Standard(s) indicated on this Certificate.

Standard(s) for Safety: UL 213, Rubber Gasketed Fittings for Fire-Protection Service
ULC/ORD C213, Rubber Gasketed Fittings for Fire-Protection Service

Additional Information: See the UL Online Certifications Directory at www.ul.com/database for additional information

Only those products bearing the UL Certification Mark should be considered as being covered by UL's Certification and Follow-Up Service.

Look for the UL Certification Mark on the product.


Bruce Mahrenholz, Director North American Certification Program
UL LLC

Any information and documentation involving UL Mark services are provided on behalf of UL LLC (UL) or any authorized licensee of UL. For questions, please contact a local UL Customer Service Representative at <http://ul.com/about/localcenter>



CERTIFICATE OF COMPLIANCE

Certificate Number 20151012- EX5184
Report Reference EX5184- 19980408
Issue Date 2015-OCTOBER-12

Issued to: National Fittings Ltd
S F112/3-D, Part Mathapur Rd, Kaniyu Village
Palladam Taluk, Combatore District Tn 641659 INDIA

This is to certify that representative samples of FITTINGS, CAST IRON, DUCTILE IRON, MALLEABLE IRON AND BRONZE
Ductile Iron Threaded Fittings, with rated pressure not to exceed 300 psig

Have been investigated by UL in accordance with the Standard(s) indicated on this Certificate.

Standard(s) for Safety: Ductile Iron Threaded Fittings (ANSI B16.3)
Fittings fabricated with dimensional specifications in accordance with ANSI/ASME B16.3

Additional Information: See the UL Online Certifications Directory at www.ul.com/database for additional information

Only those products bearing the UL Certification Mark should be considered as being covered by UL's Certification and Follow-Up Service.

Look for the UL Certification Mark on the product.


Bruce Mahrenholz, Director North American Certification Program
UL LLC

Any information and documentation involving UL Mark services are provided on behalf of UL LLC (UL) or any authorized licensee of UL. For questions, please contact a local UL Customer Service Representative at <http://ul.com/about/localcenter>



Product FM Certificates





Certificate of Compliance

This certificate is issued for the following:

Gasketed Pipe Fittings for Aboveground Fire Protection Systems

(See Attached Sheets)

Prepared for:

National Fittings Limited
SF No 112/3-D, Part Madhapur Road
Kaniyur Village
Coimbatore 641659
India

Manufactured at:

National Fittings Limited
SF No 112/3-D, Part Madhapur Road
Kaniyur Village
Coimbatore 641659
India

FM Approvals Class: 1920 - "Pipe Couplings and Fittings for Aboveground Fire Protection Systems"

Approval Identification: 3035181
Approval Revision Request No: 797-12760-268

Approval Granted: February 22, 2010
Approval Date: January 13, 2014
Reissued Date: May 4, 2016

To verify the availability of the Approved product, please refer to www.approvalguide.com

Said Approval is subject to satisfactory field performance, continuing Surveillance Audits, and strict conformity to the constructions as shown in the Approval Guide, an online resource of FM Approvals.



David B. Fuller
AVP, Manager of Fire Protection
FM Approvals
1151 Boston-Providence Turnpike
Norwood, MA 02062 USA



Page 1 of 7

Note: The certificate of compliance's are updated only when some changes take place in the product range. Otherwise, the date appears in the certificate refers to the date on which the updation has taken place. Also, the certificates could be accessed thru UL/FM websites where in all our certificates are shall appear for the products for which we are having approval.

Approval Guide



Pipe Fittings

These fittings are suitable for interconnecting piping, valves and other components in both wet and dry automatic sprinkler systems. Installation should be according to applicable sprinkler system fabrication rules. These rules limit the minimum size of sprinkler piping to 1 in., nominal. FM Approved pipe fittings of smaller sizes are intended for use as valve trim, gauge connections, and for other peripheral service. The water flow path of the sprinkler system cannot be designed using smaller sizes than 1 in., nominal. Unless otherwise noted in the listing, these fittings have 175 psi (1205 kPa) rated working pressure.

Threaded connections on fittings can be made to FM Approved threadable thinwall pipe or to Schedule 40 pipe. Refer to the "Steel Pipe" listings for a summary of the various types of FM Approved steel pipe suitable for threading or grooving."

The fittings manufacturer's installation instructions must be observed in all cases. When connections are made to FM Approved pipe, the pipe manufacturer's installation instructions must also be followed.

Unless otherwise stated below, the maximum ambient temperature to which these fittings should be subjected is 225°F (107°C).

Pipe Fittings

National Fittings, Pipe Fittings

Product Designation	Fitting Description	Nominal Pipe Size, in.	Max Working Pressure, psi (kPa)	Remarks
I.105	90° Elbow	76.1, 139.7, 165.1 mm	232 (1600)	c
I.105	90° Elbow	8, 10, 12	300 (2070)	c
I.105	90° Elbow	5, 6 133, 139.7, 159, 165.1 mm	400 (2760)	c
I.105	90° Elbow	1, 1-1/4, 1-1/2, 2, 2-1/2, 3, 4 76.1, 108 mm	500 (3445)	c
I.106	45° Elbow	8, 10, 12	300 (2070)	c
I.106	45° Elbow	5, 6 133, 139.7, 159, 165.1 mm	400 (2760)	c
I.106	45° Elbow	1, 1-1/4, 1-1/2, 2, 2-1/2, 3, 4 76.1 mm, 108 mm	500 (3445)	c
I.107	Equal Tee	8, 10, 12	300 (2070)	c
I.107	Equal Tee	5, 6 133, 139.7, 159, 165.1 mm	400 (2760)	c
I.107	Equal Tee	1, 1-1/4, 1-1/2, 2, 2-1/2, 3, 4 76.1 mm, 108 mm	500 (3445)	c
I.120	Reducing Tee, Grooved	3 x 76.1 mm 139.7 mm x 4 165.1 mm x 139.7 mm	232 (1600)	c
I.120	Reducing Tee, Grooved	8 x 4, 6 219.1 mm x 165.1 mm 10 x 6, 8 12 x 4, 6, 8, 10	300 (2070)	c
I.120	Reducing Tee, Grooved	2-1/2 x 1, 1-1/4, 1-1/2, 2 3 x 2-1/2 4 x 2-1/2 6 x 1, 1-1/4, 1-1/2, 2, 3, 4, 76.1 mm 139.7 mm x 1, 1-1/4, 1-1/2, 2, 3, 76.1 mm 165.1 mm x 1, 1-1/4, 1-1/2, 2, 3, 4, 76.1 mm	400 (2760)	c
I.120	Reducing Tee, Grooved	2 x 1, 1-1/4, 1-1/2 3 x 1, 1-1/4, 1-1/2, 2 4 x 1, 1-1/4, 1-1/2, 2, 3, 76.1 mm 76.1 mm x 1, 1-1/4, 1-1/2	500 (3445)	c
I.120 T	Reducing Tee, Grooved x Threaded	2-1/2 x 1, 1-1/4, 1-1/2, 2 6 x 1, 1-1/4, 1-1/2, 2, 3, 4, 76.1 mm 139.7 mm x 1, 1-1/4, 1-1/2, 2, 3, 76.1 mm 165.1 mm x 1, 1-1/4, 1-1/2, 2, 3, 4, 76.1 mm	400 (2760)	c, d



Advantages of grooving over threading or welding

- ✓ Reduced Cost
 - Savings up to 30 % on the installed system
 - Less skill and less work force required
- ✓ Reliability
 - Globally accepted by approval agencies
 - Proven Technology over 50 years
- ✓ Allows expansion and contraction at each joint
- ✓ Option for Rigidity and/or Flexibility
- ✓ Removal of Fire Hazard at the work site
- ✓ Retrofit of existing facilities
 - Practical and with minimum disturbance



Welding Vs. Grooving	
WELDING METHOD	GROOVING METHOD
<ul style="list-style-type: none"> ▪ End Beveling of pipe ▪ Welding cost ▪ Weld Testing ▪ Additional Skill for un-accessible or difficult positions ▪ Multi level, higher position dangers ▪ Preventive steps for fire hazards ▪ Have to leave spacing for <ul style="list-style-type: none"> ▪ Welding process 	<ul style="list-style-type: none"> ▪ Square cut pipes used ▪ Grooving at shop level provides improved productivity ▪ Bolting method is fast and easy ▪ Low skill for workers ▪ Segment testing is easy and fast ▪ Branch take off is clean and fast ▪ Better use of space, piping could be close to wall, roof or floor

Highlights of National Grooved System



- ✓ Installed Cost is less
- ✓ Rigidity and Flexibility attainable
- ✓ Expansion, contraction, angularity without additional fixtures
- ✓ No Fire Hazard
- ✓ Buried and Cross country piping is faster
- ✓ Each Joint acts like a Union
- ✓ Reduced propagation of Noise and vibration in piping
- ✓ Shop and Field Fabrication helps faster completion
- ✓ Wide acceptance by the **international specification agencies**
- ✓ High Pressure up to 1000 psi with 1.5 safety factor
- ✓ **Indian product**
- ✓ **40 years** of uninterrupted manufacturing with global exposure and acceptance
- ✓ Single source for product up to 32"



NFL Grooved Project Installations



For Product Installation videos : <https://memengineering.in/installations>

NFL Grooved Project Installations



For Product Installation videos : <https://memengineering.in/installations>

Key Project & References



IT PARKS	INDUSTRIAL	METRO RAILS	AIRPORTS	INFRASTRUCTURE	AUTOMOTIVE	HOSPITALS	OTHERS
WIPRO, BOSCH, Lodha T4, Dell India, HCL, Infosys, Cognizant, Motorola, Nokia, DLF cyber city, Amazon, IBM, Flipkart, Ford BPO,	Tata (First Solar), MRF, Corteco, Phillips, Ashirwad Pipes, Sundaram Fasteners, KONE, Comcast, Asian Paints, Eaton, Danfoss, IGCAR, NTPL, GARC, Herrenknecht	Delhi, Chennai, Bangalore, Hyderabad, Jaipur, Pune, Kochi, Kolkata ,Mumbai & NCRTC Metros	DIAL (Delhi), Mumbai Int'l Airport Ltd	Jindal Steel, J&K, HP Tunnel, Amazon, Ford, Anthem Bioscience, Avigna, IICC Dwarka	General Motors, Daimler India, Volvo India, Ford, Caterpillar, SKF India, Royal Enfield	Manipal, CMC, Womens Centre	Coco Cola, PepsiCo, Marriot Bangalore, Several Reverse Osmosis Plants in India and OEMs

SL#	PROJECT / CONTRACTOR	Ref. PERSON & DESIGNATION	CONTACT NUMBER
1	WIPRO (PAN INDIA)	Mr. Nagaraj Pattar (Manager Engineering)	+91-73378 35115
2	BOSCH	Mr. Sridhar (Global Real-estate -MEP)	+91-9916567561
3	Mumbai Metro Rail / TATA Projects	Mr. Manish Kumar S (Project Manager)	+91-96433 09610
4	KRCL & IRCON / Savronik Systems	Mr. Satish Kumar (Manager Procurement)	+91-9999760183
5	Mumbai Costal Road / L&T Ltd.	Mr. Ravi Roushan (Sr. Project Engineer)	+91-79032 24612

COMPETITOR COMPARISON CHART

PARAMETERS	NATIONAL	COMPETITOR-1	COMPETITOR-2	COMPETITOR-3
Company Origin / Manufacturing	INDIA	USA	Europe / USA	China
Total Years of Experience in Mfg. Grooved Fittings	40+	80	25	10
UL / FM Certification	Direct	Direct	Direct	Cross Listing
EPDM Gasket Supplied for Fire protection services	Grade "E"	Grade "A"	Grade "A"	Grade "A"
Delivery	Ready / 4-8 Weeks	10 / 12 / 16 Weeks	10 / 12 / 16 Weeks	Ready / 6-10 Weeks
Product Durability (Weight / Width maintained)	25+ Years	25+ Years	25 Years	10 Years
No. of Manufacturing facilities	3 Foundries, 2 Machine shops, 1 SS Investment casting unit, 1 Gasket Mfg. Unit – Integrated Facility with 1500 Ton / Month capacity @ Coimbatore, TN, INDIA	Factories and foundries across USA, Europe & China (Imported)	Factories and foundries across USA, Europe & China (Imported)	Factories and foundries based in China (Imported)
No. of Listed Grooved Fittings manufactured	1200	2500	1500	800
Market Price	Medium	High	High	Low
Brand presence in Global Market	INDIA, USA, ME, AUSTRALIA, CANADA & EUROPE	GLOBAL MARKET	EUROPE, ASIA, USA	CHINA, ASIA, INDIA



**MEM
Authorized
Distribution
and marketing
Certificate**



NATIONAL FITTINGS LIMITED

CIN : L29199TZ1993PLC008034 • GSTIN : 33AAACI4737M1ZG



MEM ENGINEERING PVT LTD
Since 1988

REF NO: NF/MEM/006/19-20

7th Feb 2020

TO WHOMSOEVER IT MAY CONCERN

This is to certify that M/s. MEM ENGINEERING PVT LIMITED having their office at D1, GROUND FLOOR, HALLS TOWERS, 33, HALLS ROAD, EGMORE, CHENNAI-600008 is an authorised distributor for Domestic Sales- India for our products namely "NATIONAL" brand DI GROOVED COUPLINGS AND FITTINGS, SS BALL VALVES AND THREADED FITTINGS effective from 1st April 2013.

MEM is also authorised to submit proposals for project requirements and secure orders for execution.

Yours Sincerely

For National Fittings Limited

Jayaram Govindarajan
Whole Time Director





MEM Warehouse @ Chennai





Our Solutions for Segments:



IT & ITES



Commercial Buildings



Data Canters



Manufacturing



Pharmaceuticals



Hospitals



Hotels



MEM Customers



500+ Happy Customers across India & 1000+ Installations



Contact Us



HEAD OFFICE

MEM ENGINEERING PRIVATE LIMITED

D1 – Ground Floor, Halls Towers,
No. 33, Thamizh Salai (Halls Road),
Egmore, Chennai - 600 008, Tamil Nadu, INDIA

EMAIL US

Fittings / Valves / Pumps

Contact@memengineering.in

MEM All products

srao@memengineering.in

VISIT US

www.memengineering.in



DELHI




MUMBAI

PUNE

BENGALURU

CHENNAI

COIAMBATURE

-  MEM Head Office & Warehouse
-  Sales & Rep branch
-  NFL Mmanufacturing Units



Thank you



**30 Years of
Customer Excellence**

