



EMERGENCY LIGHTS

Designed for use in:
New construction
Modernization
Direct replacement for existing units

Meeting both lighting and alarm codes ANSI A17.1, these systems contain maintenance-free nickel cadmium batteries, and solid state circuitry with accessory terminals for use with 6VDC alarm bell.

MODEL EMLK, UNIVERSAL LED KIT



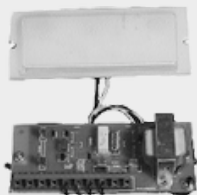
- Replaces Monitor, Adams, PTL, GAL, EPCO, Innovation, Nylube, Mathis and many others
- 6 high efficiency white LEDs
- 120/220VAC power circuit
- 6/12VDC alarm bell (optional) can be wired into terminal strip
- 12V 1.2AH lead-acid battery included

MODEL ELSL-2



- Remote trimline model
- Car top mount power supply with alarm bell
- 18 gauge galvanized steel box
- External test switch
- Remote light source 7" x 1-7/8" x 1" (can be mounted in car above operating panel or ceiling)
- CSA approved

MODEL ELPB-1



- Mounts inside car operating panel
- Power pack, light source, and rectangular lens included
- For OEM and replacement use
- CSA approved

MODEL ELSL-ACBG

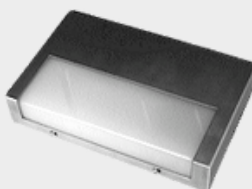


- Remote trimline model
- Similar to model ELSL-2 with ground fault circuit interrupter



MODEL ELPB-2

- Mounts to back of cover plate, 3" dia. round lens
- For OEM, and replacement use



MODEL ELWS-2

- Wall surface mount
- Brushed stainless steel finish, 5-1/2" x 8-1/2" x 1-3/4"
- Alarm bell (optional) can be wired into terminal strip
- CSA approved



MODEL ELCM-1

- Ceiling mount
- Self-contained unit
- White acrylic lens
- Alarm bell (optional) can be wired into terminal strip 6-5/16" x 5-1/4" x 1-13/16"

MODEL ELWS-2B

- Same as ELWS-2 with a bronze electroplated finish

ACCESS ELEVATOR & ESCALATOR SUPPLY



(800) 266-8654



4301 S Valley View Blvd.
Las Vegas, NV 89103

www.aesupply.com | sales@aesupply.com

ACCESS IS ALWAYS AROUND



EMERGENCY LIGHTS REPLACEMENT PARTS

MODEL EP-10063300 W/ EP-10000301



MODEL EP-695-6



MODEL EP-EFP1120B



MODEL BATBR23A



Model	Replacement for Model	Description
15EL002	ELPB-1	Power pack - includes circuit board and battery
15EL003	ELCM-1	Power pack - includes circuit board and battery
15EL004	ELWS-2	Power pack - includes circuit board and battery
15EL005	ELSL-2	Without bell
15EL006	ELSL-2	Without lens
15EL007	ELSL-2	Lens w/ leads
15EL008	ELPB-1	Lens & bracket
A02EL001	ELWS-2	Lens only
A02EL005	ELPB-1	Lens only
21EL001B		Circuit board only ELSL 2
21EL005		NICAD battery - 5 to 6 year life span (approx.)
71LB0035	502	Replacement lamp
BATBR23A		3-volt battery with Epson Plug and 5" leads, for T.I., G.E. and Maida Micro-Processor back-ups. Minimum 5-year shelf life.

"EPCO" Emergency Lighting Products.	
Model	Description
EP-10063300	Dual lamp, ceiling mounted, emergency light fixture
EP-10000301	6 volt power pack
EP-695-6	6 volt "GEL" battery
EP-NP24-12B	24 volt "GEL" battery, for "Flexi-Light"
EP-EFP1120B	Circuit Board for "Flexi-Light"
EP-EFP1120C	Charger for "Flexi-Light"
EP-EFP1120P	Power Pack for "Flexi-Light"
EP-EFP1120K	Choke for "Flexi-Light"
NOTE: Complete "Flexi-Light" consists of 1 each, Charger, Power Pack and Choke.	

BATTERIES



Model EP626	6 Volt	3 Amp HR	5-1/4"L x 2-5/16"H x 1-5/16"D
Model EP-670-6	6 Volt	7 Amp HR	5-7/8"L x 3-5/8"H x 1-5/16"D
Model PS-682-W2	6 Volt	8 Amp HR with leads	
Model EP-695-6	6 Volt	9.5 Amp HR	
Model 21EL005	4.8 Volt	NICAD stick with leads	
Model EP-1212	12 Volt	12 Amp HR	
Model DR-12V7AH	12 Volt	7 Amp HR	5-1/8"L x 3-5/8"H x 2-1/2"D
Model B-718AAC1	12 Volt	9.5 Amp HR	
Model EP-1212	12 Volt	12 Amp HR	

ACCESS ELEVATOR & ESCALATOR SUPPLY



(800) 266-8654



4301 S Valley View Blvd.
Las Vegas, NV 89103

www.aesupply.com | sales@aesupply.com

ACCESS IS ALWAYS AROUND