

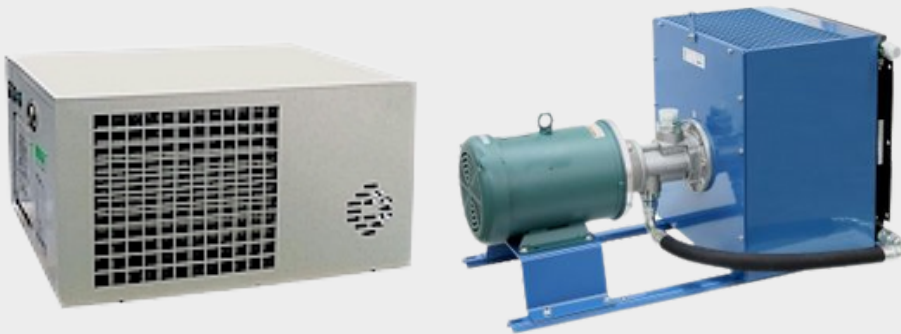
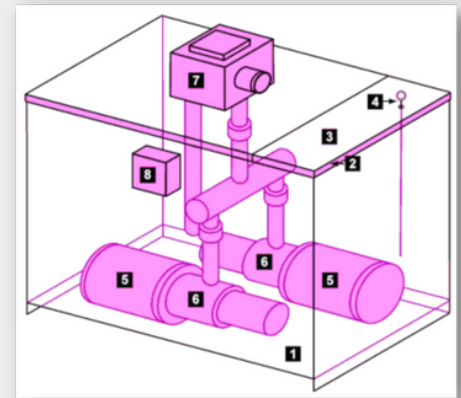
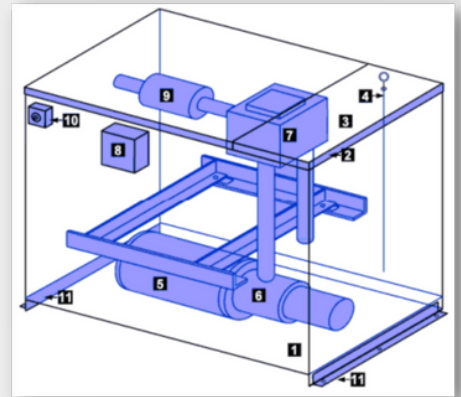
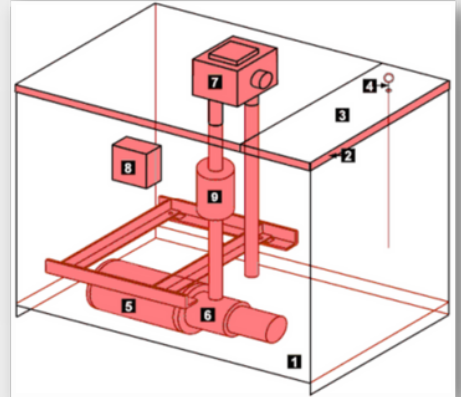


HYDRAULIC ELEVATOR SUBMERSIBLE POWER UNITS & ACCESSORIES

ENGINEERED FOR MAXIMUM PERFORMANCE

Experience the convenience of low noise operation and easy maintenance accessibility with Access Elevator & Escalator Parts' hydraulic elevator submersible power units.

- CSA Approved valve & motor
- Top mounted valve for ease of adjustment
- Pumps range from 32-270 GPM
- Motors range from 10 HP to 70 HP
- Positive displacement screw pump
- Direct coupled pump and motor submerged in oil
- Low noise operation with anti-vibrations mounts
- Valve pressure gauge quick connector H1-63
- Adjustable oil thermostat 85-230 °F
- Seismic brackets
- Customized to meet nearly any special project



EXAMPLES

- A- VALVE OUTSIDE, JACK TO RIGHT, MUFFLER INSIDE
- B- VALVE & MUFFLER INSIDE, JACK TO LEFT, SEISMIC BRACKETS, OIL THERMOSTAT
- C- VALVE OUTSIDE, JACK TO RIGHT, DUAL PUMP/MOTOR

- 1- POWER UNIT TANK -2- TANK COVER WITH 5/8" DOWNWARD LIP -3- ACCESS COVER
- 4- OIL DIPSTICK -5- SUBMERSIBLE MOTOR -6- SUBMERSIBLE PUMP -7- VALVE
- 8- ELECTRICAL BOX -9- MUFFLER -10- OIL THERMOSTAT -11- SEISMIC BRACKETS

Access has a large inventory of components, which generally allows power unit fabrication within 3-5 days. Our power units are designed and manufactured to conform to ASME A17.1. Nationwide shipping available.

ACCESS ELEVATOR & ESCALATOR SUPPLY



(800) 266-8654



4301 S Valley View Blvd.
Las Vegas, NV 89103

www.aesupply.com | sales@aesupply.com

ACCESS IS ALWAYS AROUND



HYDRAULIC ELEVATOR SUBMERSIBLE POWER UNITS & ACCESSORIES

POWER UNIT COMPONENTS

MOTORS

- Imperial Motors • SB Motori
- 200VAC, 230VAC, 460VAC, 575VAC, 1 or 3 Phase 60Hz
- 80 Starts/Hr. • 15-70HP

PUMPS

- Allweiler • IMO • Seim
- 400PSI Max. • 250GPM Max.

VALVES

- Maxton • EECO • Blain
- 120-4440VAC • 12-120VDC

Oil Lines

- 1.5"-3" NPT or Victaulic
- Directed to right, left, front, back, or up



STANDARD TANK SIZES

TANK	HP	GPM	Oil Line Size/GPM	Oil Gal. Permanent / Transferable	Tank Dimensions	Tank Footprint
SK-32	10-20	50-60	1.5" / 70	35 / 38	32"W x 18"D x 36"H	36"W x 18"D
	10-30	77-96	2.0" / 134			
SK-36	25-40	104-106	2.5" / 206	38 / 60	36"W x 18"D x 42"H	40"W x 18"D
	25-40	121-123				
SK-48	30-60	162-200	3.0" / 270	76 / 122	48"W x 23"D x 48"H	52"W x 23"D
	40-60	217-213				
SK-60	≤70	≤250		159 / 215	60"W x 32"D x 50"H	64"W x 32"D
SK-72	≤70	≤250		202 / 258	72"W x 36"D x 58"H	76"W x 36"D

POWER UNITS CUSTOMIZATION

- Valve inside the tank
- Control valve NPT or grooved
- Down speed regulated valve
- Shut off valve
- Rupture valve
- Muffler external
- Muffler in tank
- Isolation coupling
- Oil pressure switch
- Oil heater in tank
- Oil cooler external
- Oil chiller external
- Oil level sight gauge
- Oil level switch
- Oil pressure gauge
- Oil return scavenger pump
- Oil breather filter
- Additional electrical enclosure
- Phase monitors and motor starters, wired or unwired
- Unistruts for controller mounting
- Dual pump /motor power units
- Dual tanks power units
- Custom oil line length, threaded or grooved
- Custom size tanks

ACCESS ELEVATOR & ESCALATOR SUPPLY



(800) 266-8654



4301 S Valley View Blvd.
Las Vegas, NV 89103

www.aesupply.com | sales@aesupply.com

ACCESS IS ALWAYS AROUND



POWER UNIT WORKSHEET AND QUOTE FORM



Name: _____ Quote/PO: _____

Email: _____ Phone: _____

Company: _____ Date: _____

Address: _____

PROJECT DATA

Car Capacity _____

Car Speed FPM _____

Car Weight _____

Car Travel _____

Car Class Passenger Freight

Piston Diameter _____

Valve Location Above Tank In Tank

No Load PSI _____

Valve Hand Right Left

Full Load PSI _____

Valve Outlet Threaded Victaulic

Oil Flow GPM _____

Valve Down Regulated

Oil Line Size _____

Valve Coil Voltage _____

Power Unit Submersible Dry

Motor HP _____

Muffler Required Threaded Victaulic

Power Supply _____

Muffler Outside Tank In tank

PROJECT OPTIONS

Oil Cooler Low Pressure Switch Shut off Valve Qty _____

Tank Heater (Installed) Starter With Cabinet Rupture Valve

Oil Return (Scavenger) Pump Oil Level Sight Guage Isolation Coupling Qty _____

Oil Pressure Guage Low Oil Switch

Additional options available, please inquire.

NOTES

ACCESS ELEVATOR & ESCALATOR SUPPLY



(800) 266-8654



4301 S Valley View Blvd.
Las Vegas, NV 89103