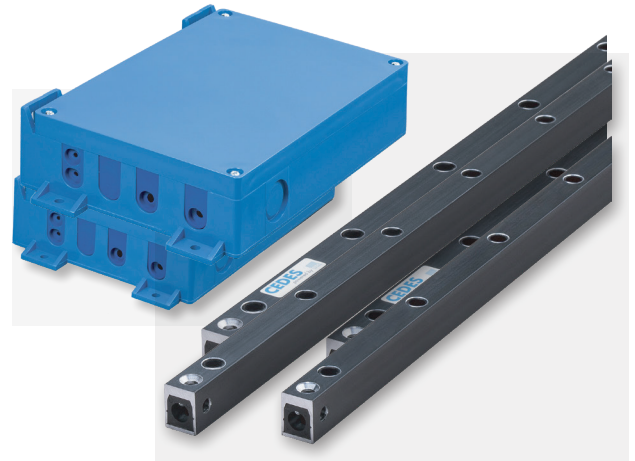


cegard/Mini-MOD

Technical data

FEATURES

- ▶ Power supply voltage of 20 ... 265 VAC or 20 ... 375 VDC
- ▶ Relay output for easy integration into existing systems
- ▶ Wide range of 0 ... 5 m
- ▶ Ideal for retrofitting using different optimized door mounting kits
- ▶ Status LED integrated into edge
- ▶ IP65 (Standard) and IP67 (waterproof) versions available
- ▶ Edge can be front or side mounted – mounting holes are compatible with the MiniMax and cegard/Max light curtains



OPTICAL

Operating range	0 ... 5 m	
No. of optical elements	32	
No. of beams	32 elements	154 beams
Max. ambient light	100,000 Lux	

MECHANICAL

Dimensions (w × h × l)	12 × 16 × max. 2,000 mm	
Housing material	Natural or black anodized aluminum	
Enclosure rating		
- Opto edges	IP65 / (IP67)	
- Control unit	IP54	
Temperature range	-20°C ... +60°C	

ELECTRICAL

Supply voltage U_{sp}	20 ... 265 VAC / 20 ... 375 VDC	
Max. current consumption	80 mA at 24 VDC	
	45 mA at 240 VAC	
Relay output	Max. 250 VAC / 5 A	
	Max. 125 VDC / 0.5 A	
	Max. 30 VDC / 5 A	
	Min. 5 VDC / 10 mA	
Typ. response time with 32 elements	130 ms	

CONNECTION CABLE

Emitter	
Cable length	5 m
Diameter	Ø 3.5 mm
Material	PVC, black
Connection	M8, 4-pin
Plug color	White
Receiver	
Cable length	5 m
Diameter	Ø 3.5 mm
Material	PVC, black
Connection	M8, 4-pin
Plug color	Blue

GENERAL

EMC emission	EN 12015:2014
EMC immunity	EN 12016:2013
Vibration	IEC 60068-2-6:2007
Shock	IEC 60068-2-27:2008
Cable durability	IEC 60227-2:2003
RoHS	2011/65/EU
Certificates	CE, UKCA, CSA



CEDES AG is certified according to ISO 9001: 2015.

CEDES AG reserves the right to modify or change technical data without prior notice.



ACCESS ELEVATOR & ESCALATOR SUPPLY



(800) 266-8654



1302 65th Street

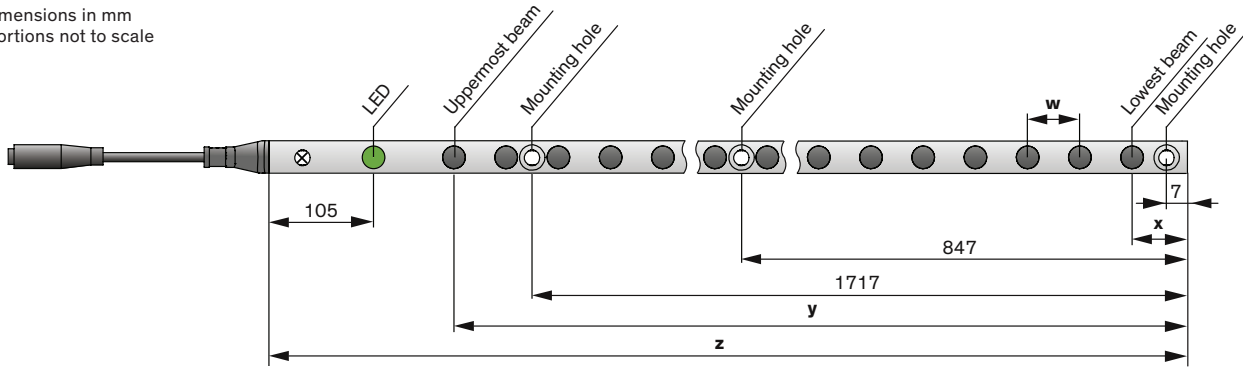
Emeryville, CA 94608

4301 S Valley View Blvd.

Las Vegas, NV 89103

Dimensions edges

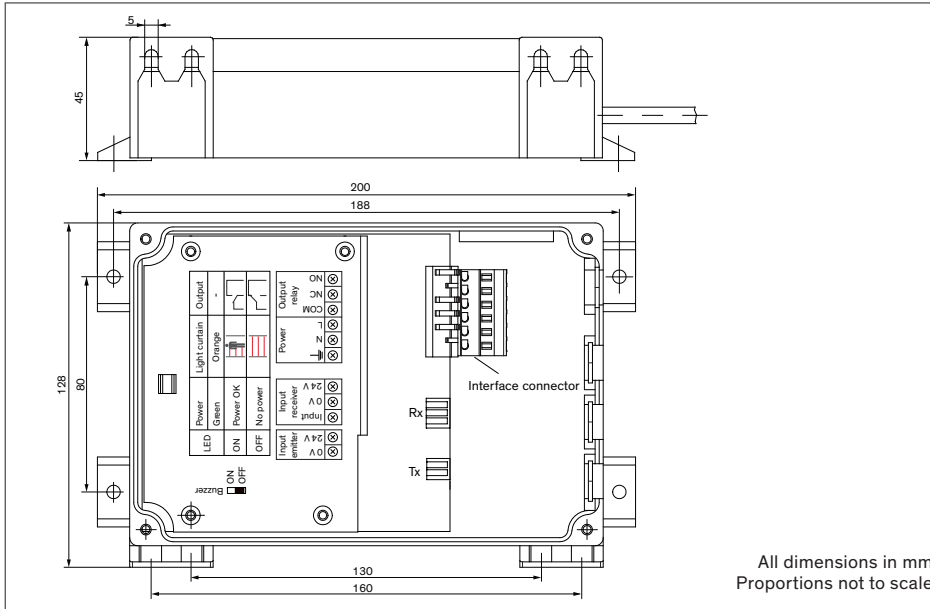
All dimensions in mm
Proportions not to scale



32 elements

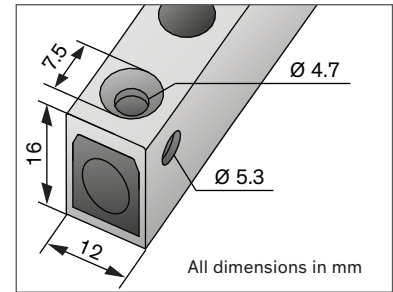
w	57.4
x	20
y	1800
z	2000

Dimensions control unit



All dimensions in mm
Proportions not to scale

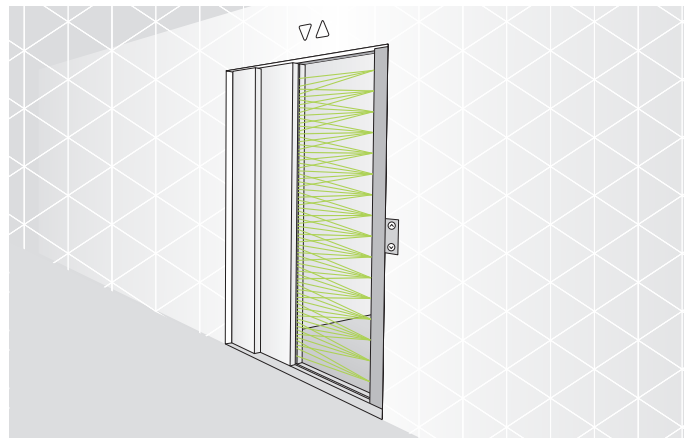
Detailed view



Applications



Dynamic mounting



Static mounting