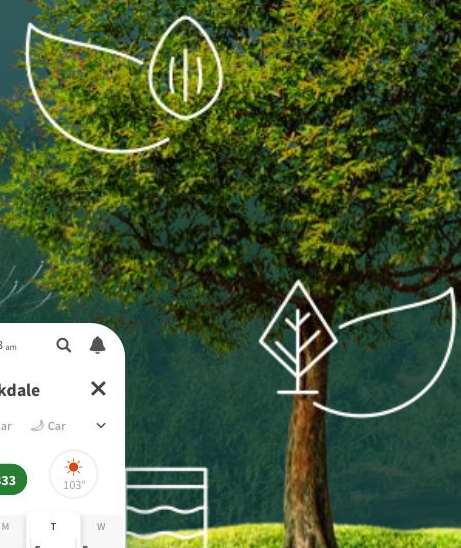
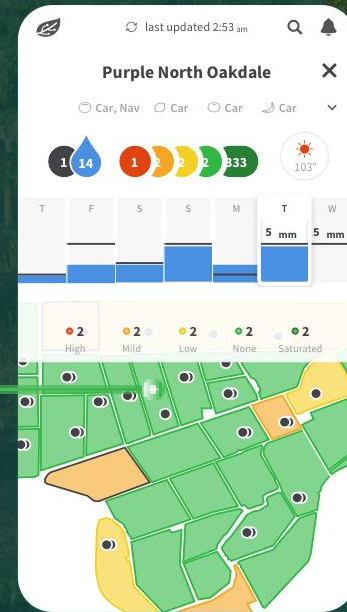




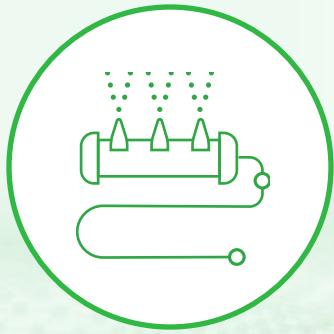
PHYTECH



Control Every **Beat**
of your Farm



Allowing growers to Monitor, Plan, Analyze and Control Every Beat of their Farm:



Irrigation



Nutrition



Pest and disease

*seamlessAPI with leading providers:



How We Started

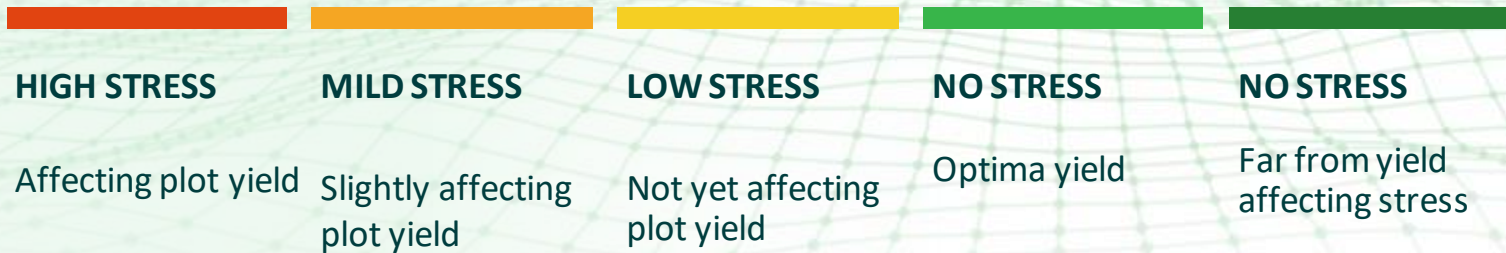
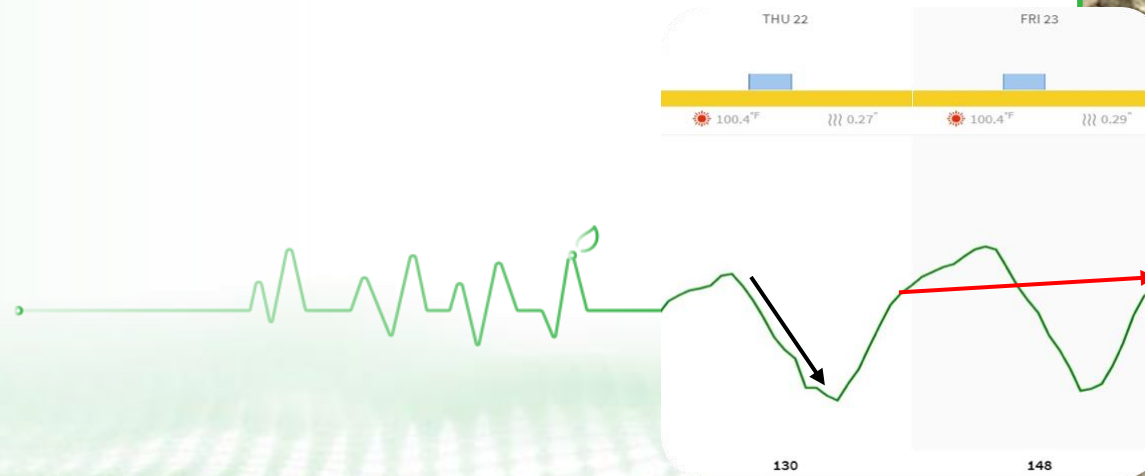


We wanted a technology that makes a difference



Knowing how the trees **ACTUALLY FEEL** was the most crucial gap we identified so we started with it

Listening To Trees' Heartbeats

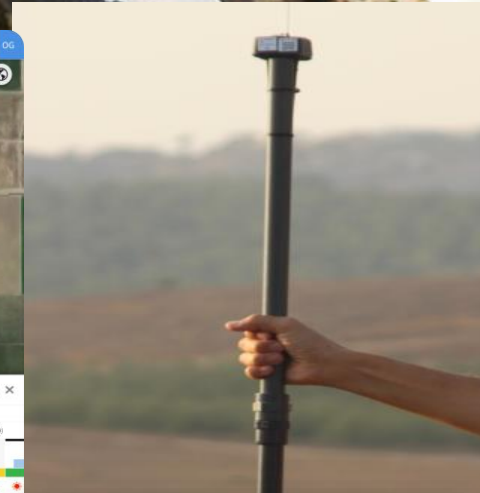
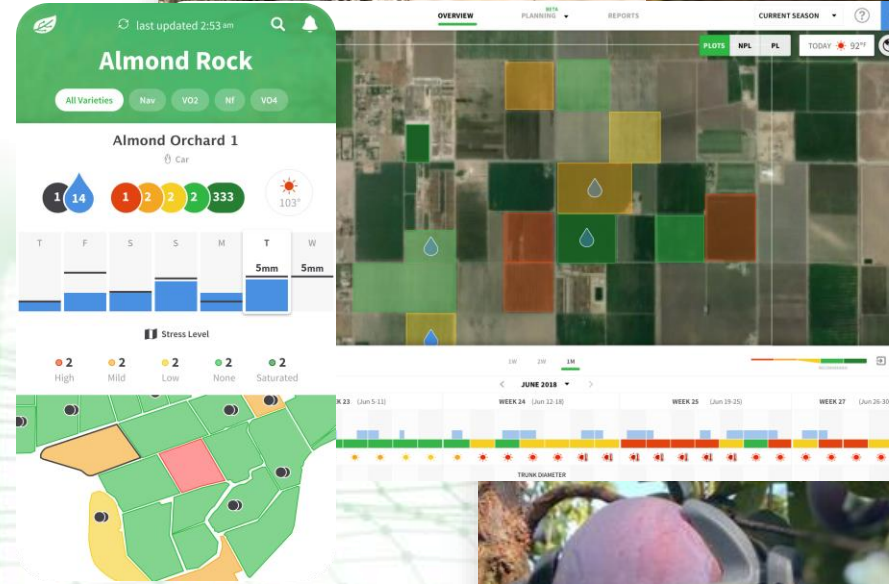


[Trees talk. Click to Learn how we listen>>](#)



Full Field Monitoring:

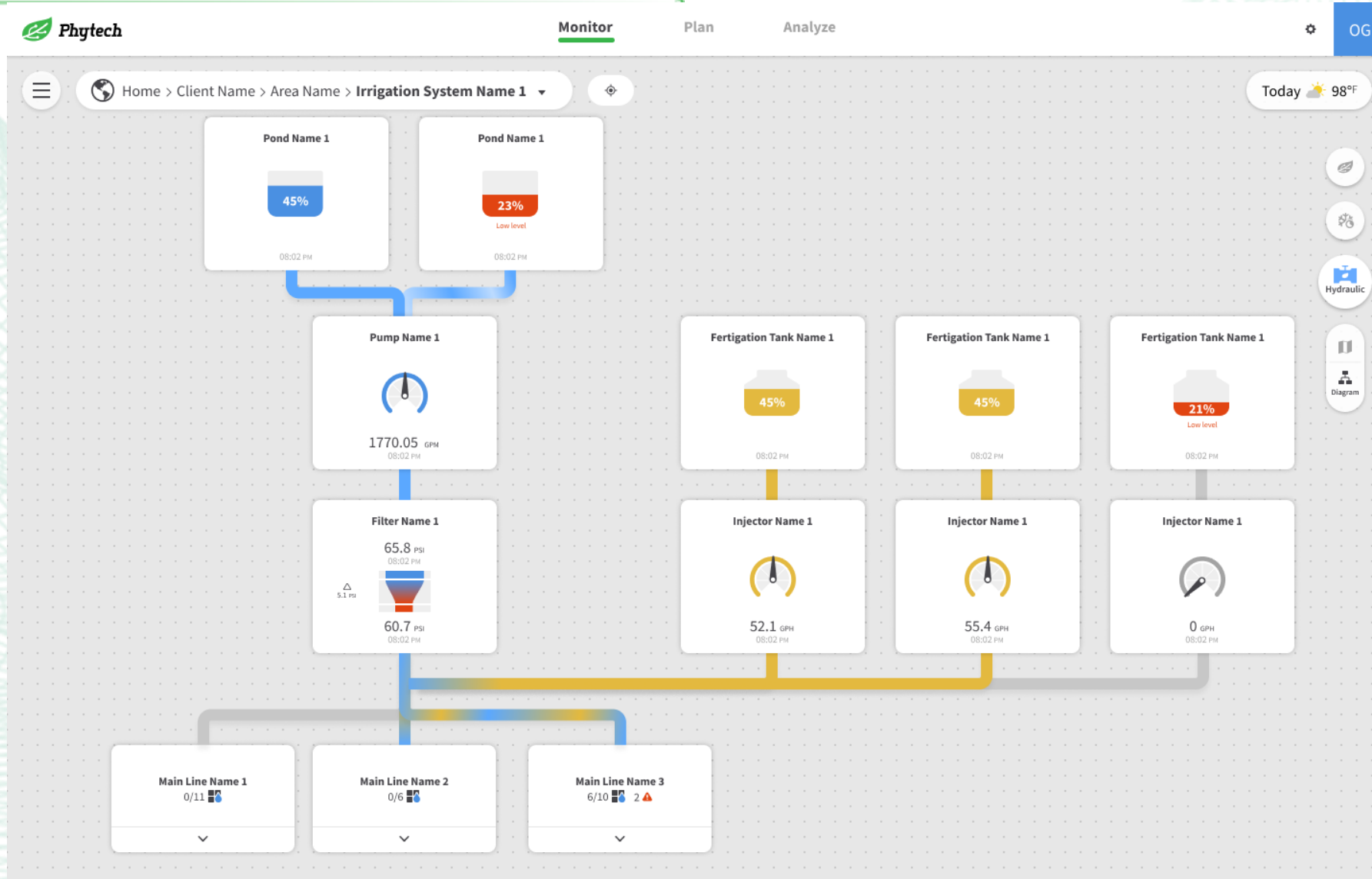
- Plant - 3 x Dendrometers
- Infrastructure - Water pressure sensors
- Soil - Full Soil Moisture (3ft)
- Fruit - 3 x fruit sensors (*optional)
- IOT Network - Data logger
- Optional: hydraulic system monitors, nutrition monitors, frost sensors, wind machine monitors





Hydraulic System Monitoring

Diagram View



Zoom In: Deep-dive Into Alerts And Valves Performance

The screenshot displays the Phytch monitoring interface. At the top, the Phytch logo is on the left, and navigation tabs for 'Monitor', 'Plan', and 'Analyze' are in the center. A settings gear icon and 'OG' are on the right. Below the navigation, a breadcrumb trail reads 'Home > Client Name > Area Name > Irrigation System Name 1'. A weather widget shows 'Today 98°F'. The main map area shows an aerial view with several blue hatched rectangular zones. Two of these zones are highlighted with red borders and contain red warning icons. A vertical sidebar on the right contains icons for 'Hydraulic', 'Map', and other functions. At the bottom, a summary bar shows: 'Drip 6 [valve icon] 2 [warning icon]', 'Sprinklers 2 [valve icon] 1 [warning icon]', and 'Cooling 1 [valve icon] 3 [warning icon]'. A 'Last updated 08:02 Tue' timestamp is in the bottom left corner.

Phytch

Monitor Plan Analyze

Home > Client Name > Area Name > Irrigation System Name 1

Today 98°F

Hydraulic

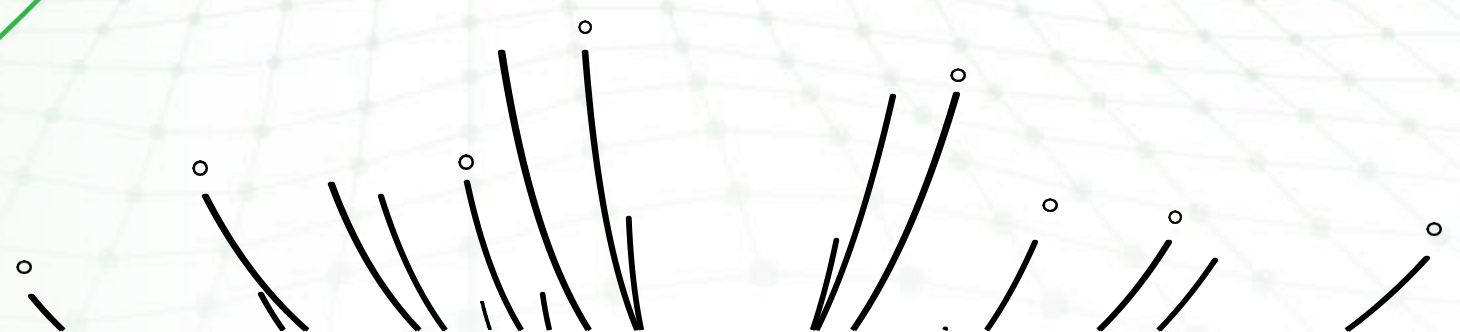
Map

Drip 6 [valve icon] 2 [warning icon] Sprinklers 2 [valve icon] 1 [warning icon] Cooling 1 [valve icon] 3 [warning icon]

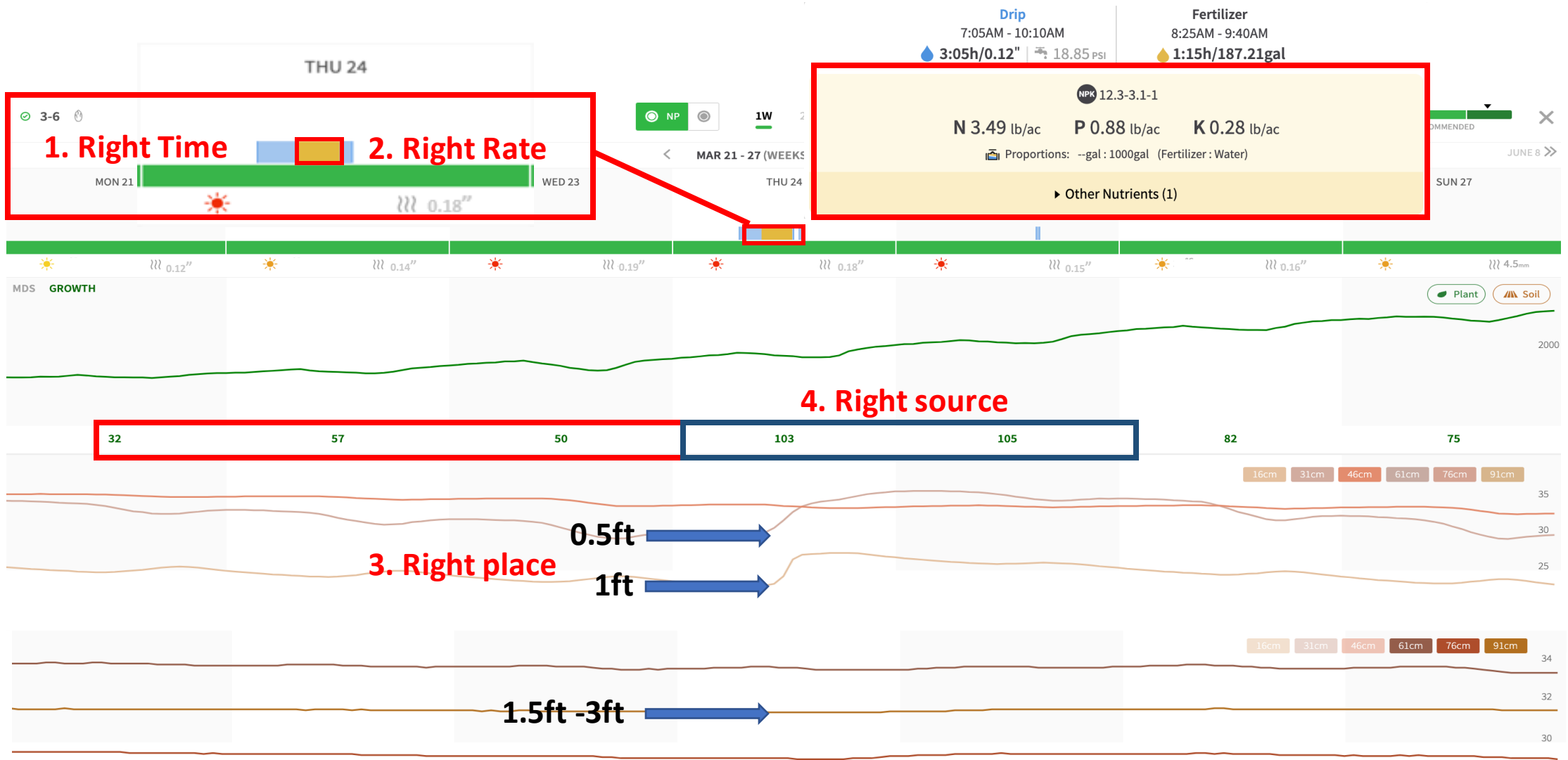
Last updated 08:02 Tue



Nutrition



Monitoring And Controlling The 4R's



Bridging The Gaps, Connecting The Dots



Operational gap
Monitoring Planned Vs.
Actual



Feedback gap
Measuring tree's real-
time reaction



Management gap
Budgeting, Planning
Communicating and
sharing



Insight gap
Adapting future according
to real-time data



Thank **You**

