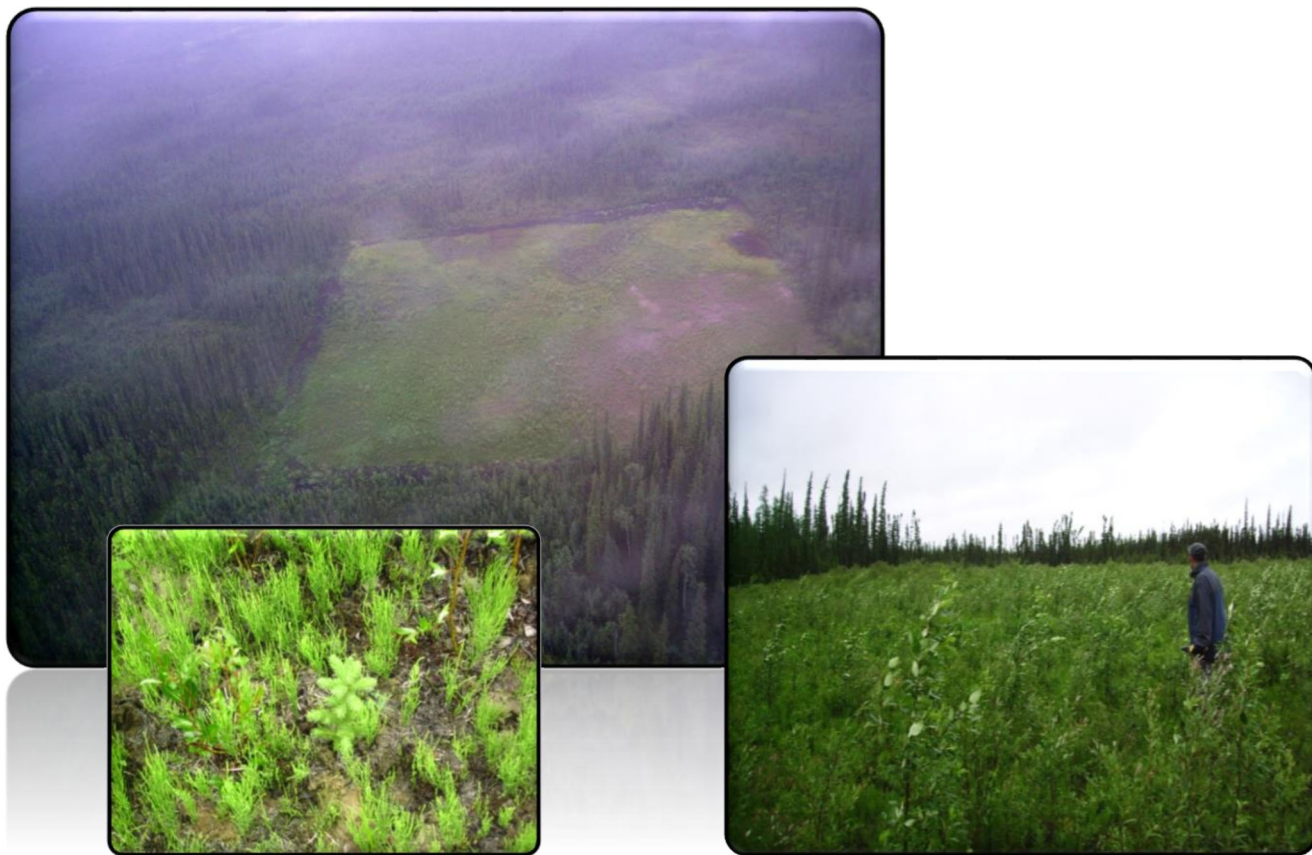


Wellsite and Access Road Inspection for CoR Part 2



Project Profile

A wellsite and an access road located in a remote area and were built with minimum disturbance.

Issue

The site displayed surface roughness and featured woody debris and slash piles along the perimeter of the wellsite.

Solution

One of our Qualified Reclamation Specialist carried out the restoration inspection. They conducted a thorough assessment of the biological resources on-Site and identified any adverse environmental impacts arising from construction.

Outcome

The vegetation cover established within the cleared areas was at a seral stage that led to a desirable climax plant community. The soil assessment concluded that surface compaction did not result from the operator's activities on site. We recommended leaving the woody debris and slash piles along the perimeter as they acted as propagation beds for the softwood species surrounding the disturbance.