



APEX
AUTOMATION

**"Providing intuitive,
fully autonomous
solutions to industry
- giving people back
their time."**

Apex is Open for Business



"The sole purpose of the Apex Automation team is to create long-term, trusting and authentic business relationships built on integrity that result in our clients getting the highest quality solutions to achieve optimal production and operational excellence."

2012

2014

Apex Opens Edmonton Office
Becomes COR Safety Certified

2016

Growth Rate +80%
Becomes Rockwell Recognized
E&H Service Provider

2017

Growth Rate +70%
Opens Engineering Division
ISA - Innovation of Year Award

2018

Growth Rate +50%
Stratus System Integrator
Nozomi Partnership Signed

2019

Growth Rate +30%
Opens Saskatoon Office

2020

Opens Lloydminster Office
Indurad Partnership Signed
Schneider Alliance Partner
Control Station Partner

2021

Growth Rate +35%
Emerson SI Partner
Opens Calgary Office

2022

Growth Rate +74%
Incorporates in the United
States of America (USA)

Where We Work

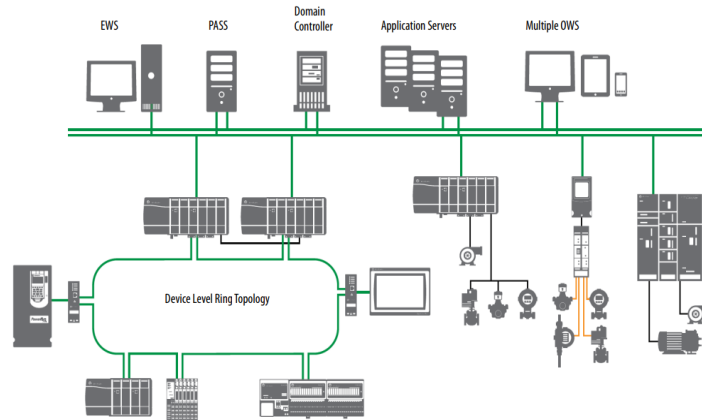


Intelligence . **Ingenuity** . Integrity

What We Have Become

Engineering

We are your control system engineering firm consultants. Our team of dedicated professionals will help your team itemize the necessary steps for project success. Our primary focus is to add value to any engineering through recommending fit for purpose technologies to achieve the best in class designs.



Procurement

We pride ourselves on having expert knowledge in primarily two DCS systems. Emerson's DeltaV and Rockwell's PlantPax. However, we are agnostic and have inhouse experts you can rely upon within the Siemens, Schneider and Honeywell products.

Commissioning

Quality is part of our culture. We follow our stringent QA/QC processes which include IVT, CAT and SAT. Each electronically documented through our cloud-based software solution called TurnKEY Optimization. Ensuring our teams development is 99% ready for operations prior to C&SU.



Intelligence . Ingenuity . Integrity

What We Are Known For



SILVER
System Integrator

A ROCKWELL AUTOMATION PARTNER

PlantPAX
Distributed Control System

Rockwell Automation

We pride ourselves on having expert knowledge in deploying Rockwells new DCS PlantPAX. We currently support about 50,000 Rockwell I/O in Western Canada. We employ around 35+ Rockwell staff executing an array of projects, maintenance, optimizations and virtualizations. We have in house best practices and process library standards.

Emerson DCS Integration

More recently the Apex team has grown to become a respected DeltaV integration company. We currently support around 100,000 I/O in Western Canada. We employ approximately 30+ DeltaV trained and experience staff. We are currently helping deploy Virtualizations, Control Strategy Optimizations and improved Class Based Library implementations.



**Industrial
Automation & Control
System Integrator**



SIEMENS

Honorable Mentions

Quality is part of our culture. We follow our stringent QA/QC processes which include IVT, CAT and SAT. Each electronically documented through our cloud-based software solution called TurnKey Optimization. Ensuring when we arrive on site, we are 100% confident in our system.

Intelligence . Ingenuity . Integrity

What We Are NOT Known For

Endress+Hauser

We are expertly trained E+H instrumentation service provider in western Canada. We also have preferred pricing and can sell, install, commission and calibrate any Endress product for you. Did you know Rockwell & Endress have a global strategic alliance?

Authorized Service Partner

Endress+Hauser 
People for Process Automation



Distributor

Apex Automation is consistently on the hunt for innovative and leading-edge technologies. In the last 3 years we have become Canadian Distributors for the Conspec air analyzer and Navtech 3D radar product lines. These products are currently primarily found in the mining industries.

Field Services

Over the past few years Apex Automation has invested in our own specialty trained field service delivery team. They are highly trained and expert level experience for installation of OT equipment. In addition to supporting our install base of Navtech, Conspec and E+H instruments.



Automation **Field** Services

OT - ICS - IT



Operational Technology

- High-Availability Architecture
- Configuration Management
- Turnkey Operations Support
- IT/OT Dashboards - PiVision, Dataview, AIM, VantagePoint, Canary and others

ICS Cybersecurity

- Purdue Boundary Violation Detection
- Vulnerability Detection
- OT Environment Assessment
- Role-Based SSLVPN Access Control
- OT Migration Strategy
- Encapsulation of vulnerable OT traffic



ANSIBLE



Linux

Datacenter Technologies

- Application Proxies / Gateways
- Hybrid Cloud/On-Prem Environments
- Site Reliability Engineering
- Disaster-Recovery / Business Continuity
- Task Automation with Ansible

Intelligence . Ingenuity . Integrity

Fabrication & Panel Services

Assembly

The AFS team has assembled MCC Sections, IED, Networking, Marshalling, PLC, Server Cabinets along with complete Control Rooms. Our assembly team is amazing at understanding quality before quantity. This Business Unit can add value to any stakeholder simply looking for a turnkey specialty contractor.



Installation

We can help! Our AFS group takes pride in following their work to site. Due to the sensitive nature of Automation equipment. Our installers have had many years of ensuring whatever was assembled is in perfect working order when we leave site.

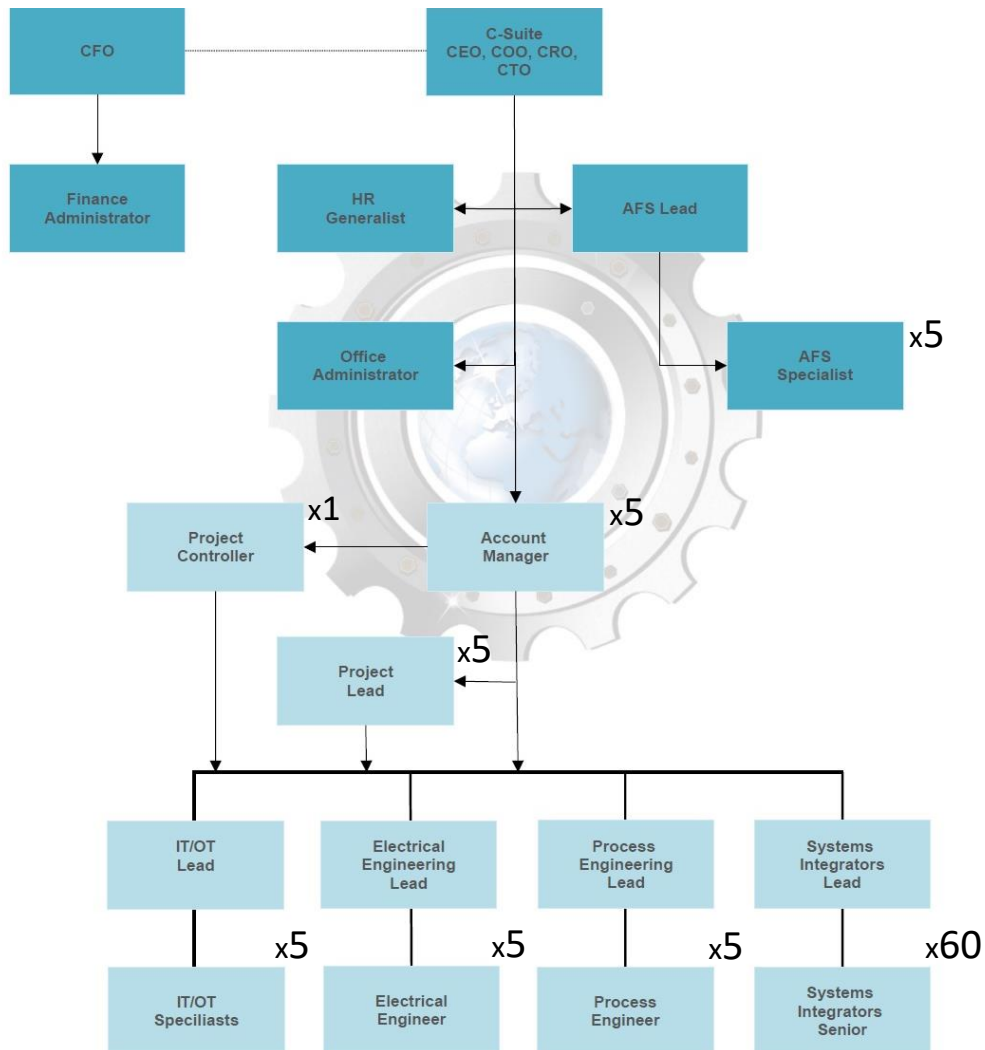


Testing

Apex Automation Ridgely tests all of our gear. Weather that is our Servers and Networking cabinets to commissioning and start-up support with instrumentation. We follow our QMS and ensure each and every component is verified and ready for operations.



How We are Organized





Executive Summary

Locations & Service Areas

- Edmonton - HQ
- Calgary - AB
- Lloydminster - AB
- Bonnyville - AB
- Saskatoon - SK
- Bismark - ND
- Superior - WI
- Denver - CO
- Houston - TX
- Tampa Bay - FL
- Kelowna - BC



85+
Team
Members

650,000
Hours+

750+ Projects
6,500+ Work Orders



Maintenance	46.2 %
Automation	36.8 %
Field Services	8.9 %
OT/IT	6.1 %
Panel Fabrication	2.0 %



\$ 189,846
Back to our
Communities

Sports Sponsorships



4-H

