



Main Street

Volume X Number 1

January, 1994

Alton, New Hampshire



POLICE CHIEF MYNCZYWOR RESIGNS: ARTHUR BASTIAN NAMED INTERIM HEAD

Alton's chief of police for the last 13 years, Thomas Mynczywor, submitted his resignation to the Board of Selectmen on December 1. "It's time for me to move on" was the explanation offered in the resignation, which became effective on December 17.

With a total of 29 years in law enforcement, Mynczywor will continue in the field as a bailiff for the Belknap County Sheriff's Department.

The Board of Selectmen initiated a search for a permanent replacement and named Arthur Bastian interim chief. They expect the search to be completed by March 1. Bastian, who retired two years ago as the chief of the Newport Police Department, came highly recommended by Earl Sweeney, director of the state's Police Standards and Training Council. Three other candidates were considered.

DEADLINES MUST BE MET FOR ABSENTEE BALLOTS TO COUNT

Absentee ballots for the town and school elections on Tuesday, March 8, are available through the Town Clerk's Office in Town Hall.

An original application for each individual seeking an absentee ballot must be on file before the absentee ballot will be mailed.

Completed ballots must be received by the Town Clerk by 5p.m. the day before the election.

24 OFFICES TO BE FILLED IN 1994 TOWN/SCHOOL ELECTIONS

Residents of Alton will go to the polls on Tuesday, March 8, to elect candidates for 24 town and school positions. Filing for those positions begins at the Town Clerk's Office on Wednesday, January 19, and continues through 5p.m. on Friday, January 28. The office is open daily from 8:30a.m. to 4:30p.m.

Candidates must be registered voters to file. The Supervisors of the Checklist will be in session from 7 to 9p.m. on Tuesday, January 18, to register new voters.

The filing fee is \$1 for any office which receives compensation, no filing fee for an office which receives no compensation.

Town positions to be filled and the present office holders are:

- One Selectman for Three Years (Reuben Wentworth)
- One Town Clerk for Three Years (Gwendolyn Jones)
- One Tax Collector for Three Years (Anne Kroeger)
- One Treasurer for Three Years (Helen Sullivan)
- One Trustee of Trust Funds for Three Years (Jean Roberts)
- One Highway Agent for Three Years (Richard Drew)
- One Library Trustee for Three Years (EllaMarie Carr)
- One Fire Ward for Three Years (Russell Jones)
- One Cemetery Trustee for Three Years (Thomas Hoopes)
- One Water Commissioner for Three Years (Richard Duncan)
- One Water Commissioner for One Year (Malcolm Simonds)
- Three Budget Committee Members for Three Years (Ruth Messier, Neal Harris, Beverly Kempton)
- One Budget Committee Member for One Year (Russell Jones)
- Two Planning Board Members for Three Years (Donald MacDonald, Lawrence Alting)
- One Moderator for Two Years (John Duffek)
- One Supervisor of the Checklist for Six Years (Jean Roberts)

School positions to be filled and the present office holders are:

- One School Moderator for One Year (William Finethy III)
- One School Clerk for One Year (Jeanne Sullivan)
- One School Treasurer for One Year (Shirley Young)
- Two School Board Members for Three Years (Jack Henderson, June Tanguay)

Candidates will be invited to submit a statement indicating why they are seeking the office. The statements will be printed in the March issue of Main Street.

**SUPPORT BUSINESSES THAT SUPPORT
MAIN STREET!**



FIRE DEPARTMENT RETIREES

Irving Roberts (left) and Milton Jensen (center) are congratulated by Chief Russell Jones upon their retirement from the Alton Fire Department. The occasion was noted during the annual dinner meeting of the Department.

WOODSTOVE INFORMATION

Anyone contemplating the installation of a woodstove is urged to contact Fire Department Lieutenant Jack Woodland, 875-2691, for a free consultation on guidelines and safety measures. Lt. Woodland also is available to inspect existing installations.

Fresh Meats • Fishing Supplies
 Deli • Vegetables • Gas
 Bakery • Videos
 Fishing & Hunting Licenses

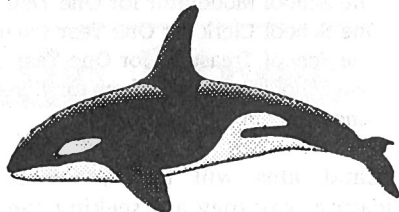
The one stop store for all your needs!

**WAYSIDE GROCERY
 AT THE
 ALTON CIRCLE**

(603) 875-2861

Live Bait

*Smelt
 Shiners*



Ice Fishing Tackle

**VOTERS APPROVE PAY RAISES
 AT SPECIAL TOWN MEETING**

Approximately 90 residents attended the 30-minute Special Town Meeting on December 1 and passed two articles allowing for pay increases for full time employees.

The first article dealt with the cost items included in the collective bargaining agreement reached between the Selectmen and the International Brotherhood of Teamsters Local 633 which called for a 2.5% cost of living increase and 100% coverage of medical insurance for 1993; a 3% cost of living increase and 100% coverage for 1994; and a 2% cost of living increase plus a 2%, 3%, or 4% merit increase and 90% coverage in 1995.

The second article called for a 3% increase for full-time, non-union Town employees for 1993 provided that no additional sums of money would have to be appropriated to fund the increases. Positions eligible for the increase were Town Administrator, Town Secretary, Town Clerk, Tax Collector, Police Chief, Police Sergeant, Building Inspector, Transfer Station Supervisor, and Road Agent.

An amendment to limit the increase to the Town Secretary, Police Chief, Police Sergeant, Building Inspector, and Road Agent was defeated and the article passed.

**ALTON 2000 TO SPONSOR FORUM
 ON HOUSE BILL #497**

Alton 2000 will sponsor an informational forum on House Bill #497 at the Alton Bay Community Center on Wednesday, January 12, at 7:30p.m.

The Bill, now in the legislative process, would allow voting on town and school budgets by ballot rather than at town and school meetings.

Panel members for the forum will be Alton's State Representatives Alice Ziegler, Paul Golden, Linda Smith, and Gordon Bartlett. A question and answer period and refreshments will follow their presentation.

**BICENTENNIAL COMMITTEE
 TO REVIEW LOGO DESIGNS**

The Bicentennial Committee will be meeting at 4p.m. on Wednesday, January 26, at the Gilman Library to review the logo designs submitted for the celebration.

Also, members who wish to continue on the Committee may be reappointed at this time by Town Clerk Penny Jones.



Skerman H. Brown Plumbing

WATER SYSTEMS • HEATING SYSTEMS
 BACKFLOW DEVICES

NH MASTERS LIC. #360
 ME MASTER LIC. #02595
 NHPI #555 WSPCC #0004
 BACKFLOW DEVICE
 TESTER #3820

*Call us for your
 Plumbing needs!!*

24 HOUR SERVICE

P.O. Box 404
 Alton, NH 03809

Phone:
 (606) 875-7337

Senior Citizen Discount

PUBLIC BUDGET HEARINGS ARE CONVENIENT AND HELPFUL

Every effort is being made by the Budget Committee to make it convenient and meaningful for Alton Residents to learn about the proposed 1994 town budget and the 1994-95 proposed school budget.

Most towns hold a public hearing for each of the two budgets. Alton's Budget Committee sets up two each (one at night and one on a Saturday afternoon) to provide some flexibility and convenience for residents to get to one or the other of the meetings. And your questions and input are sought.

The schedule is as follows:

- School Budget - Thursday, January 20, 7p.m. and Saturday, January 22, 1p.m.
- Town Budget - Thursday, January 27, 7p.m. and Saturday, January 29, 1p.m.

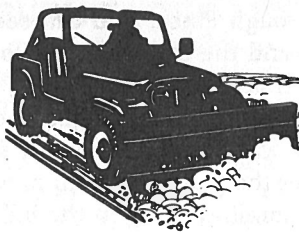
It's not necessary to attend both sessions of each. Take your pick of evening or afternoon as it best fits your schedule.

All sessions are held in the Alton Central School Elementary Resource Center. To reach it, drive out Pine Street (next to the School) past the School to near the end and turn left on Pine Street extension all the way around the athletic field to the parking area on the eastern side of the School. Entrance to the Elementary Resource Center is from that parking lot.

COUNTRY DANCE LESSONS OFFERED AT OPEN HOUSE

The Parks and Recreation Department and Shep Spinney are sponsoring an Open House to introduce the art of Country Dancing on Monday, January 10, from 7:30-9p.m. at the Alton Town Hall. There is no charge for the Open House.

The program will continue every Monday from 7:30-9p.m. at the Alton Town Hall with a program fee for each class of \$5 per person.



Alton Funeral Home
 School Street
 Alton, N.H. 03809
 (603) 875-3311



HOLIDAY CELEBRATIONS

"Holiday Celebrations Around the World" was the theme of the annual concert by the vocal ensembles of Alton Central School. Members of the Kindergarten were especially enthusiastic with their rendition of "Deck The Halls". The concert also featured grades one through four, the Middle School Choir and the High School Choir, all under the direction of John Nichols.

CHILD SCREENING AVAILABLE

Parents of children birth to six residing in Alton who suspect that their child may be educationally handicapped are invited to call for a free screening which includes: development, hearing, vision, communication and motor function. For further information please contact Dorothy Bristol at 875-7500.

HELP WANTED

Anyone interested in participating in Main Street is encouraged to call Editor John Duffek at 875-7300.

No talent will be turned away! We need reporters for general and feature stories; salespersons to call on prospective advertisers; and collaters, folders and staplers to help put it all together once a month.




NAPA AUTO PARTS - FARMINGTON

WE CARRY A FULL LINE
OF AUTO PARTS & ACCESSORIES
INCLUDING...

- Parts for Imports
- Parts for Trucks
- Paint & Supplies
- Brand Names You Rely On

ASK ABOUT NAPA'S NATIONAL WARRANTY PROGRAM

NAPA AUTO PARTS
 Route 11 - Farmington
 755-2264 • 800-734-2269
 Mon-Fri 6 am to 5:30 pm
 Sat 6 am to 5 pm • Sun 9 am -1 pm

TEENAGE MISSIONARY: GUERRILLAS AND SPIDERS!

By Lori Durkee

In last month's issue I told you about 17-year-old Jeremy Everson and how he spent his summer doing mission work in Columbia, South America. He helped rebuild an airstrip and wired electrical outlets in the airplane hanger. The team Jeremy worked with consisted of 19 boys and girls plus their leader, Mr. VanDyke. The kitchen and cafeteria separated the boys from the girls in the dorm where they were housed for the summer.

At the completion of the airstrip half the team laid cement blocks in the hanger dividing the hanger in half with a wall to keep the dust from the industrial arts classes on one side from permeating the airplane parts on the other.

Some of the other teammates painted the school. Jeremy was put in charge of the rest of the team pouring cement for a sidewalk from the back door of the dorm to the airstrip sidewalk. It was completed in three or four days.

Jeremy then returned to the hanger for the next two and a half weeks to help build the walls. After that he returned to the school to lay more blocks for a new office for the principal. The girls mixed mortar and carried water and the boys carried and laid the blocks. Jeremy worked on the school project a week and a half excluding two days he spent with the Macu Indians at their village. You will learn more of the Macu Indians in the next issue.

Saturdays, the group worked from 8 a.m. to noon. The afternoons were filled with recreation. There was soccer,



basketball, volleyball, racquetball, and horseback riding.

One Saturday afternoon one of the girls was making her debut as a horseback rider when a small dog decided to test the nerves of horse and rider. He ran up to the horse, yipping and yapping. He got his answer. The horse got so rattled he raced straight towards a tree. The girl flew or threw herself from the saddle, landing on the ground and sliding into the tree. She not only survived the minor scrapes and scratches, but the laughter from the spectators as well.

Two Saturday afternoons during recreation period, everyone was shuffled into Mr. VanDyke's apartment. Columbian's were walking on the road that ran through the middle of the Finca grounds. They were in military camouflage wearing military style boots. They were armed with AK-47s, machine guns, and a couple had grenades hanging on their jackets. It was hard to tell if they were the army or guerrillas. You see, the guerrillas had killed enough servicemen to exchange their rubber boots for the military boots. Mr. Johnson, head of public relations, called the army base on his two-way radio to confirm whether they were army or guerrillas passing through. Both times they were army patrols. Even so, it was a scary scene!

Look at the photo. You'll see two soldiers walking on the road that runs through Finca. You can see the missionary house on the left and the tractor garage on the right. The two soldiers were checking everyone along their way up the trail to an area where it was alleged there was guerilla activity. The army was planning to build a temporary base in the hills to deter the guerrillas from moving down closer to the Columbian families living in the hills.

Perhaps you'd like to know what everyone ate at the

Dean L. Finethy & Sons CARPENTERS - BUILDERS

*Custom Made Kitchen
Cab. & Vanity & Counter Tops*

776-4631

TUXEDOS Rentals & Sales

Weddings or Proms
OVER 95 STYLES

"I Do"

Alton Traffic Circle
(603) 875-4848



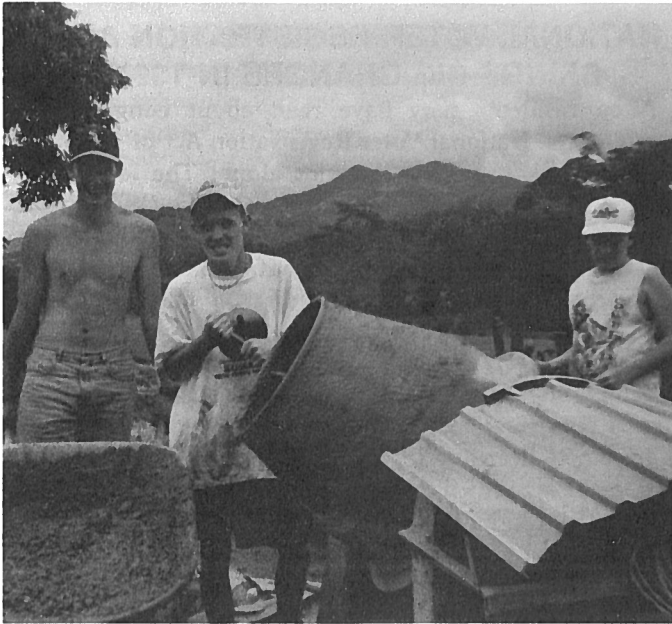
HAMEL WOLFEBORO

List your property with
one of our 20 full time agents
for the finest service in the area.

ALTON BAY OFFICE

Route 11
Alton Bay NH 03810-0314

Phone
(603) 875-6051



dorm. There was French toast, pancakes, and hot and cold cereal for breakfast. Most meals were American-type meals to help keep them from getting dysentery, etc. They enjoyed hamburgers, sloppy joes, macaroni and cheese, pizza, and other such goodies. Every Tuesday was Columbian cuisine day. A local woman prepared arapes, that were like soft English muffins with cheese in the center, burritos, and emphinadas, that were like a pita pocket filled with chicken, rice, corn and peas. She would cook enough of each so there would be leftovers for everyone to have for supper without having to cook.

I am going to end this edition of the story by telling you about a way the team had for amusing themselves.

There was a banana patch behind one of the houses. The guys and gals caught tarantulas by steering them into buckets with machetes. Then they went down to the river where they caught a "whip" spider and a "wolf" spider. The whip is similar in appearance to a daddy long legs and it has pincers and a mouth full of teeth. The wolf is similar to a tarantula only more round and plumper. It's black with a white stripe across its back.

The spiders were taken back to the dorm in plastic jars. They put a tarantula in the wolf's jar. They fought hard but the wolf spider won. Each tarantula fell under the expertise of the wolf. Now it was the whip's turn and the wolf was again victorious.

Don't miss the Macu Indians in the next issue.

IN MEMORY OF BONNIE M. SIMPSON

The home economics teacher at Alton Central School for 25 years, Bonnie M. Simpson, 47, died December 11 at her home after a period of failing health.

She was a 1969 graduate of Keene State College and was named the New Hampshire Home Economics Teacher of the Year in 1993. She was a member of the NH Home Economics Association, the Alton Teachers Association, and the National Education Association.

Simpson was an avid lover of the outdoors. She was a member of the Appalachian Mountain Club and had hiked as a caretaker of the Back Country Trail Sites. She had also hiked the entire Long Trail through the state of Vermont and was a member of the NH 4000 Footer Club. She had bicycled from coast to coast and had completed five marathons. She was also a member of the NH Humane Society.

Memorial contributions may be made in her name to the Bonnie M. Simpson Scholarship Fund, care of Alton High School, School Street, Alton 03809.

Success is getting what you want. Happiness is liking what you get.

Bebe Finethy
Main St., Alton, NH
875-HAIR

OPEN TUES.-SAT.
Evenings available



BUILDING EXCAVATION

Homes, Additions, Dormers
Garages, Remodeling, Decks,
Gutters & Roofing
Land Clearing, Roadwork, Septic
Systems & Asphalt Driveways

EQUIPMENT RENTAL

Backhoe \$200./8 hr day
Dozer \$200./8 hr day
Excavator \$350./ 8 hr day
with operator

1/2 Day Rates for Senior Citizens

No Job too Big or Small!!

FREE ESTIMATES

L.L. BRASWELL CONSTRUCTION

875-5315

Fully insured, References Available
25 Years in Business

LP GAS · FUEL OIL · MOBIL LUBRICANTS · HEATING SYSTEMS



FERNS ENERGY

CONCORD • 200 No. State St. • Box 491 • 03301
ALTON • Main St. • Box 446 • 03809
FRANKLIN • 221 So Main St. • Box 200 • 03235

875-3500
1-800-852-3366
Service & Operations



DR. WARREN HARRIS HONORED AT RETIREMENT PARTY

By David Northup

Dr. Warren Harris was recently honored upon his retirement as pastor of the Bay Church at a party at the Christian Conference Center. He held that post since moving here permanently in 1986 after serving as pastor in churches in Maine, Massachusetts, Rhode Island and Ohio.

A Baptist by background, he supported the Advent Christian Church in conference, regional and national activities. He led the Bay Church in a concern for missions, which brought it to a position of having the highest per capita giving to missions in the denomination the past two years.

Active in community affairs, Harris served on the Planning Board and Budget Committee and was the advertising manager for Main Street.

NATIONAL VOTER REGISTRATION ACT BRINGS BIG CHANGES IN 1995

Alton residents may have read about congressional passage of the National Voter Registration Act of 1993 and were confused. If so, you are not alone! The legislation, designed to make it easier for everyone in the USA to vote, has in effect raised more questions than provided answers. Many details are yet to be worked out.

The League of Women Voters, who pushed for the legislation, felt it was a simple process they proposed. The legislation doesn't take effect until January 1, 1995, and is frequently referred to as "motor voter" because among other things it requires all states to allow voter registration at all motor vehicle licensing locations. It also requires the same at all agencies which provide public assistance and any state-funded agencies which serve the disabled.

The federal government is not helping the states fund this new program, and the costs could be considerable. The implications are tremendous. For instance, where public assistance programs like WIC may be offered in doctors' offices, these offices would have to be designated as voter registration locations as well. The likelihood of dual registrations is great, and looseness in regulation definition could mean difficulties in handling disputes over registration on election days.

TAX ASSISTANCE FOR ELDERLY AVAILABLE FEBRUARY 1

Tax counseling for the elderly and assistance with preparation of basic tax returns will be offered by VITA (Volunteer Income Tax Assistance) Tuesdays, beginning February 1 through April 12. The program is offered at the Senior-Community Center on Pearson Road from 10a.m. to noon. Participants are asked to bring a copy of last year's return. Call Leo Panit, 875-3287, for additional information.

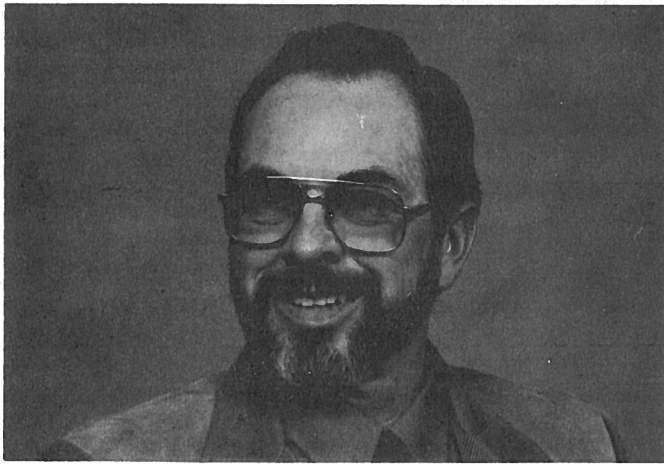


COST EFFICIENT, PROMPT, CONVENIENT,
QUALITY CARE FOR MINOR MEDICAL PROBLEMS

- * FULL RANGE OF AMBULATORY SERVICES
- * 24 HOUR PHYSICIAN COVERAGE
- * 29 MEDICAL SPECIALTIES
- * JCAHO ACCREDITED
- * 143 BEDS

524-3211

80 Highland Street Laconia, New Hampshire



ROY AMES NAMED PASTOR OF BAY CHURCH

By David Northup

The Reverend Roy Ames of Rochester, NH, is the new pastor of the Bay Church.

Ames served for many years as a part of Emmanuel Church in Rochester and then became the founding pastor of the Berwick Bible Fellowship.

For the past few years he has been working through the Eastern Regional Offices of the Advent Christian Church as their leader for church growth and church planning.

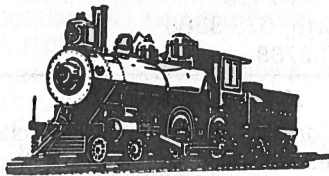
In a recent interview, he cited his goals for ministry in Alton. "The first is to develop a strong worship experience, one that takes into account the strong traditional background of our people, yet one that is relevant to our community. The second priority is to create an atmosphere of care."

TRAIN RAFFLE TO BENEFIT ALTON CABOOSE RESTORATION

The Alton Parks and Recreation Department is raffling a train to help raise money for the restoration of the caboose to be placed in Alton Bay's Railroad Square.

Alton Country Supply True Value has donated an electric train valued at over \$200. The complete set is on display at Alton Country Supply.

Tickets, \$2 each or three for \$5, are available at the store and Town Hall. The drawing will be held during Winter Carnival in February.



Karen's Country Kitchen

Main St., Alton

Open 7 Days

6 AM - 7 PM

Family Dining • Daily Specials
Take Out Available

875-6544

THE CHECKOUT DESK

By Pat Merrill

EXHIBITS AND RESOURCES

The model for the proposed addition to the Library is on exhibition, as well as drawings of the building and diagrams of the proposed rooms. Everyone is cordially invited to come and see them.

The Library exchanges videos and audio cassettes on a regular basis. Do come in and browse. Of course, there is a monthly order of books, which also arrive on a regular basis. If there is a particular item a reader would like that is not available in the Gilman Library, the librarians would be only too happy to try and get it for our patrons on interlibrary loan. And, remember, the CD-ROMS are available to our patrons. There are 15 different sources of information for you to choose from. Do drop in!

The trouble with some people today is that they are educated beyond their intelligence.

For Fast Neighborhood Service Call

S.F. ELECTRIC

Tel. 776-6172

- New Construction
- Mobile/Modular Homes
- Service Upgrades
- Older Homes
- Additions
- Small Jobs

Stockbridge Corner Road
Alton, New Hampshire 03809

NH Master Lic #7701
Low Rates

ME Master Lic. #MS60010902
Free Estimates

Safety Inspections

Senior Citizens Discounts



TRISH IS

PETS AND SUPPLIES

South Main Street, Wolfeboro, NH 03896

569-3172

For your convenience, your full service pet store carries a complete line of tropical fish and accessories.

Additionally we carry a full line of cat and dog supplies featuring the IAMS and EUKANUBA labels.

We are here to service your pet care needs.



YOUR ONE STOP PET SHOP

MAIN STREET INFORMATION CENTER

January Events

- Sat. 1 - NEW YEARS DAY
- Mon. 3 - FREEDOM FROM SMOKING Program, Lakes Region General Hospital, 527-2816
- Tue. 4 - GIRLS BASKETBALL vs. Calvary Christian, 6:30p.m.
BOYS BASKETBALL vs. Calvary Christian, 7:45p.m.
- Wed. 5 - STORY HOUR:3 to 5 year olds,Gilman Library,10a.m.
- Fri. 7 - GIRLS BASKETBALL vs. Epping, 6p.m.
BOYS BASKETBALL at Epping, 6p.m.
- Sat. 8 - HAM & BEAN SUPPER, Pearson Road Community Center, 5p.m.
- Mon. 10 - COUNTRY DANCE OPEN HOUSE, Town Hall, 7:30p.m.
- Tue. 11 - GIRLS BASKETBALL vs. Derryfield, 6p.m.
BOYS BASKETBALL vs. Derryfield, 7:30p.m.
PUBLIC HEARING: ZONING AMENDMENTS, Town Hall, 7:30p.m.
- Wed. 12 - STORY HOUR:3 to 5 year olds,Gilman Library,10a.m.
FORUM: HOUSE BILL 497, Alton Bay Community Center, 7:30p.m.
- Fri. 14 - GIRLS BASKETBALL at Sunapee, 6p.m.
BOYS BASKETBALL at Sunapee, 7:45p.m.
- Sat. 15 - BOYS BASKETBALL vs. Pittsfield, 7:30p.m.
- Mon. 17 - MARTIN LUTHER KING'S BIRTHDAY (Observed)
- Tue. 18 - SURVIVORS OF STROKE Support Group, Lakes Region General Hospital, 1-3p.m.
GIRLS BASKETBALL at Pittsfield, 7:30p.m.
- Wed. 19 - FILING BEGINS for Town/School Posts, Town Hall, 8:30a.m.
STORY HOUR:3 to 5 year olds,Gilman Library,10a.m.
GIRLS BASKETBALL vs. Linwood, 6p.m.
BOYS BASKETBALL vs. Linwood, 7:30p.m.
- Thu. 20 - PUBLIC HEARING: SCHOOL BUDGET, Alton School, 7p.m.
- Sat. 22 - PUBLIC HEARING: SCHOOL BUDGET, Alton School, 1p.m.
- Tue. 25 - GIRLS BASKETBALL vs. Moultonboro, 6p.m.
BOYS BASKETBALL vs. Moultonboro, 7:45p.m.
- Wed. 26 - STORY HOUR:3 to 5 year olds,Gilman Library,10a.m.
BOYS BASKETBALL at Pittsfield, 7:30p.m.
- Thu. 27 - GIRLS BASKETBALL at Epping, 6p.m.
PUBLIC HEARING: TOWN BUDGET, Alton School, 7p.m.
- Fri. 28 - FILING ENDS for Town/School Posts, Town Hall, 5p.m.
- Sat. 29 - PUBLIC HEARING: TOWN BUDGET, Alton School, 1p.m.

Classified Ads

Alton residents may place classified ads in Main Street each month. Ads are limited to non-commercial, private individuals who have items for sale, items wanted, free items, personals, or help wanted notices. The rate is \$1 for each ad. Main Street reserves the right to refuse any ad. Ads must be mailed with payment to P. O. Box 210, Alton Bay, 03810, by the 15th of the preceding month.

FOR SALE

22' Bayliner U.S. Yacht Sailboat, Sleeps 3 in Main Cabin, 2 in Forward Berth, 10hp Evinrude Electric Start, Trailer, \$6500, 293-2013

Lowry Organ, Double Keyboard, Bass Pedals, Automatic Chords, Excellent Condition, \$1500, 875-5877 evenings or 875-7577 days

Brand New 275-gallon Flat Oil Tank with all Accessories, \$250, 293-4442

2 Swivel Leather Seat Bar Stools, Like New, 2 for \$75, 293-4442

Exercise Bike with Lock-in or Lock-out Moveable Handle Bars, Smooth Air Resistance Wheel, 875-2661

WANTED

Looking for quality child care? Mom with degree in education and 12 years preschool experience would like to provide that for you and your child.Full or part time hours available, ages 12mos. to 7 years, reasonable rates, 875-7369

OUR ELECTED OFFICIALS

U.S. SENATE

Robert C. Smith, 332 Dirksen Senate Office Building, Washington DC 20510, 800-922-2230.

Judd Gregg, 393 Russell Senate Office Building, Washington DC 20510, 202-224-3324.

U.S. HOUSE OF REPRESENTATIVES

Bill Zeliff, 224 Cannon House Office Building, Washington DC 20515, 800-649-7290.

NH EXECUTIVE COUNCIL

Ray Burton, 271-3632(w), 747-3662(h).

NH SENATE

Leo Fraser, 225-3664(w), 435-6626(h).

NH HOUSE OF REPRESENTATIVES

Gordon Bartlett, 524-1220(w), 524-6536(h).

Paul Golden, 269-4071(w), 269-5511(h).

Linda Ann Smith, 293-9637.

Alice Ziegra, 875-2151.

BOARD OF SELECTMEN

Jim Washburn, 364-7413

Reuben Wentworth, 875-3388

Dave Tuttle, 859-2788

5 YEARS AGO.....

.....the Gilman Concert Series presented classical guitarist Christopher Kane.....the American Legion Post 72 hosted "All Clubs Night".....Ernest Batchelor retired after 25 years of service to the Alton Fire Department.....Thomas Varney was elected worshipful master of Winnepesaukee Lodge #75 F. & A. M.....Rolf Dutzmann was named state curriculum coordinator by the Young Astronaut Council of Washington DC.



Remove & Save

MAIN STREET INFORMATION CENTER

Schedules

CHURCHES:

Baha'i Fireside - Wednesday 8p.m., Holway Residence, 859-5191
Bay Church - Sunday School 10a.m., Worship Sunday 11a.m. and
Wednesday 7p.m., Pastor Roy Ames
Community Church - Worship, Congregational Meeting House,
11a.m., Dr. Peter E. Roussaki, Pastor, 875-5561
First Free Will Baptist Church - Sunday School 9:45a.m., Church
11a.m., Evening Service 6p.m., Wednesday Prayer Meeting
7p.m., Depot St., New Durham, Pastor James Nason
St. Joan of Arc - Saturday 5p.m., Sunday 8 & 11a.m., Msgr. Leo
F. Hines

COMMUNITY ACTION PROGRAM:

Monday & Friday 1 to 3p.m., Wednesday 9a.m. to 3p.m., Alton
Bay Community House, 875-7102

GILMAN LIBRARY:

Monday & Wednesday Noon to 8p.m., Friday 9a.m. to 5p.m.,
Saturday 9a.m. to Noon

TOWN HALL:

Selectman's Office, Tax Collector, Town Administrator, Town
Clerk, and Welfare Officer - 8:30a.m. to 4:30p.m.
Board of Selectmen - 1st and 3rd Monday, 7p.m.; 2nd and 4th
Monday, 9a.m.
Planning Board - Monday, Tuesday, Thursday, Friday 8:30a.m. to
3:30p.m., Wednesday 1 to 3:30p.m., Meetings with Planner by
Appointment, Closed Noon to 1p.m.
Building Inspector - Monday - Thursday, 8:30a.m. - 4:30p.m.;
Friday, Noon - 8p.m.; Walk-in Office Hours, Wednesday 1 -
4p.m. and Friday, 4 - 8p.m. For Appointment 875-5095.

LANDFILL:

Monday, Tuesday, Friday, Saturday - 7a.m. to 3:30p.m.
Sunday - Noon to 3:30p.m.
Wednesday & Thursday - Closed

SENIOR MEAL SITE:

Monday through Friday 10a.m. to 2p.m., Pearson Road Center

ORGANIZATIONS:

ALCOHOLICS ANONYMOUS - Tuesday 8p.m., Alton Bay
Community House
AMERICAN LEGION - 2nd Monday 7p.m., Legion Hall
AMERICAN LEGION AUXILIARY - 2nd Monday 7p.m., Legion
Hall
COUNTRY DRIFTERS DANCE CLUB - Thursday, 7p.m., Alton Bay
Community House
CUB SCOUT PACK 53 - Last Tuesday 6:30p.m., Legion Hall
EASTERN STAR - 2nd Tuesday
GARDEN CLUB - 4th Tuesday
FLYING CLUB - 2nd Wednesday
HAPPY HOBBY DOLL CLUB - 4th Friday 7p.m., Community
House
HISTORICAL SOCIETY - 3rd Tuesday April through October
KNIGHTS OF COLUMBUS - 1st & 3rd Tuesday 7:30p.m., St. Joan
of Arc Church Hall
LIONS CLUB - 1st & 3rd Thursday 6:30p.m. Mama Rina's
Restaurant, New Durham, September thru June
MASONIC LODGE - 2nd Thursday
PARENT TEACHER COMMUNITY ORGANIZATION - 3rd
Wednesday 7p.m. Alton Central School
PC/IBM COMPUTER USERS - 1st Monday 7p.m. Lee Maserian
Residence 875-2988
ST. JOAN OF ARC LADIES GUILD - Last Thursday 7:30p.m.
Church Hall
SENIOR CITIZENS - 2nd Wednesday 2p.m., Pearson Road Center
VFW - 3rd Monday 7:30p.m. American Legion Hall
CALL 875-7300 TO UP-DATE THE ABOVE LISTINGS

Boards and Committees

ADDRESS COMMITTEE - Meets on Call. Chairman David Jensen,
875-5637.
AD HOC COMMITTEE - Meets on Call. Chairman Virginia Gray,
875-7474.
BICENTENNIAL COMMITTEE - Meets 4th Wednesday at 4p.m. at
Gilman Library.
*BOARD OF SELECTMEN - Meets 1st & 3rd Wednesdays at 7p.m.,
2nd & 4th Wednesdays at 9a.m. Chairman Reuben Wentworth. Call
875-2161 for Appointment.
BUDGET COMMITTEE - Meets 3rd Thursday at 7p.m. Chairman
Beverly Kempton, 875-2930
CABLE TV ADVISORY COMMITTEE - Meets on Call. Chairman
Robert Boudreau, 875-6368.
CAPITAL IMPROVEMENTS COMMITTEE - Meets on Call.
CEMETERY TRUSTEES - Meet 1st & 3rd Monday at 1p.m.
Chairman Florence Shaw, 875-2220.
CONSERVATION COMMISSION - Meets 2nd Thursday at 7p.m.
Chairman Tom Hoopes, 875-3400.
FIRE WARDS - Meet on Call. Chief Russell Jones, 875-7510.
GILMAN MUSEUM COMMITTEE - Meets on Call. Chairman
Ellamarie Carr, 776-4833.
LAND CONSERVATION INVESTMENT PROGRAM - Meets on Call,
Chairman Juliet Peverley, 875-7232.
LEVY PARK TRUSTEES - Meet on Call. Chairman Jonathan
Downing, 875-7243.
OLD HOME WEEK COMMITTEE - Meets on Call, Chairman Diane
Eagles, 875-2781.
PARKS AND RECREATION COMMITTEE - Meets on Call. Chairman
Jay Sydow, 875-6792.
PLANNING BOARD - Meets 1st Tuesday at 7p.m. Chairman Larry
Alting. Call 875-5095 for Appointment.
SCHOOL BOARD - Meets 2nd & 4th Monday at 6p.m. at School.
Chairman Albert Burbank, 875-2222.
SUPERVISORS OF THE CHECKLIST - Meet on Call. Chairman Alice
Ziegra, 875-2151.
TRUSTEES OF THE GILMAN LIBRARY - Meet 3rd Monday at
3:30p.m. Chairman David Countway, 569-3648.
TRUSTEES OF TRUST FUNDS - Meet on Call. Chairman Joseph R.
Houle, 875-7321.
WATER COMMISSION - Meets 2nd & 4th Thursday at 6p.m.
Chairman George Jones, 364-6870. Office, 875-4200.
ZONING BOARD OF ADJUSTMENT - Meets on Call 2nd Thursday
at 7p.m. Chairman Milton Jensen, 875-5990.

*DENOTES A CHANGE OF INFORMATION

CALL 875-7300 TO UP-DATE THE ABOVE LISTINGS

Main Street

Published Monthly Since 1985 by
Voice of Alton, Inc., A Non-Profit Organization
P. O. Box 210, Alton Bay NH 03810

Editor John Duffek
Assistant Editor Robert Boyce
Business Manager Jeanne Cole
Advertising Manager Arthur (Skip) Thomits
Circulation Manager Robert Smith
Asst. Circulation Manager Stephen Connelly
Staff Paulette Alden, Rose and George Bornheim, Catherine
and Bob Calvert, Ted Cole, Phyllis Connelly, Daryl Czech,
Lori Durkee, Dot Folsom, Barbara Ingoldsby, Gerry and Frank
Metcalf, Tammy Murtagh, Jean Roberts, Gertrude and Gerald
Row, Nancy Thomas, Frances and James Washburn
Printed by Alton Printing Company
on 100% Recycled Paper
Average Circulation 2,500

Phones: Editorial 875-7300 Advertising 293-0422
Subscriptions are available to receive Main Street
by first class mail at \$7.50 for 12 issues

Remove and Save

**GARDEN CLUB ELECTS OFFICERS;
1993 ACHIEVEMENTS NOTED**

The holiday luncheon and annual meeting of the Alton Garden Club was held at the Pheasant Ridge Country Club. The new officers and committee heads were announced as follows:

Shirley Barnes and Daryl Czech, co-chairs; Phyllis Chaffee, treasurer; Anna Haase, assistant treasurer; Polly Finch, recording secretary; Muriel Green, corresponding secretary; Laura Whittemore, auditor; Dottie Woughter, publicity; and Ann Hoaglund, Margaret Birdsey, and Jane Hennessey, program co-chairs.

Elsie Trull, horticulture committee; Kay Connolley and Shirley Ferry, beautification committee; Muriel Green and Jeanette Leach, good cheer committee; Adelma Messenger, scrapbook committee; Muriel Miller, yearbook committee; Shirley Copeland and Madeline Griffin, hospitality committee; and Shirley Barnes and Daryl Czech, flea market committee.

The following activities and organizations received donations from the Garden Club in 1993: Santa Fund, Conservation Scholarship to the Society for the Protection of NH Forests, National Nature Conservancy, NH Conservancy, Lakes Region Conservation Trust, Audubon Society of NH, and Alton 2 Altons Flood Relief.

The beautiful flowers and filled tubs around the town are the work of the club as well as holiday wreathes at the Community Center, the Gilman Museum, Town Hall, Gilman Library, and the Police Station.

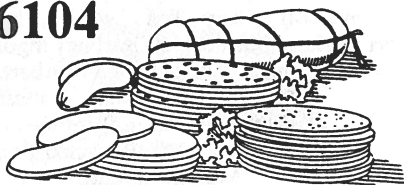
**ALL NIGHT PARKING BAN
IN EFFECT THROUGH APRIL 1**

According to a town ordinance, automobiles are not permitted to be parked on any highway in Alton between midnight and 6a.m. from December 1 through April 1.

Vehicles in violation of this ordinance may be taken to a public garage for storage at the owner's risk and expense.

**McGrath
Food Center**

**OPEN:
Mon - Sat 8-7
Sun 8-5
Tel. 875-6104**



*The McGrath family is glad to be back
serving all your Grocery Needs.*

NEW AT THE GILMAN LIBRARY

FICTION

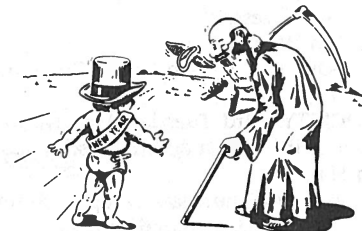
- A Hovering of Vultures by Robert Barnard
- The Devil Knows You're Dead by Lawrence Block
- The Rag Nymph by Catherine Cookson
- Old Scores by Aakron Elkins
- A Dangerous Fortune by Ken Follett
- Maestro by John Gardner
- Mrs. Polifax and the Second Thief by Dorothy Gilman
- The Black Opal by Victoria Holt
- This Savage Race by Douglas Jones
- The Fires of Heaven by Robert Jordan
- Nightmare & Dreamscapes by Stephen King
- Pronto by Elmore Leonard
- The Kaisho by Eric Lustbader
- Hotel Pastis by Peter Mayle
- Son of Fletch by Gregory McDonald
- House of Stones by Barbara Michaels
- Jennie Glenroy by Elizabeth Ogilvie
- The Heaven Tree Trilogy by Edith Pargeter
- Lasher by Anne Rice
- The Crocodile Bird by Ruth Rendell
- The Smoke Eaters by William A. Tapply
- Slow Waltz in Cedar Bend by Robert Waller

NON-FICTION

- A Guided Tour Inside a Submarine by Tom Clancy
- Having Our Say: The Delany Sisters First 100 Years by Sarah & A. Elizabeth Delany
- Culture of Complaint: The Fraying of America by Robert Hughes
- The Hidden Life of Dogs by Elizabeth Marshall Thomas

CASSETTES

- Terminal by Robin Cook
- Shadow of a Broken Man by George C. Chesbro
- What Have You Got To Lose? by Jenny Craig
- Rising Sun by Michael Crichton
- Proof by Dick Francis
- You Only Live Twice by Ian Fleming
- Born on the Fourth of July by Ron Kovic



Brenda MacKay

(603) 875-5329

My Little Sewing Room

Custom Sewing and Alterations Crafts and More
"You sow your oats...while I sew your clothes"

Hamel Building - Route 11 - Alton Bay

ICE RINK SCHEDULE

The Parks and Recreation Department announced the following schedule for the ice rink at the Route 140 Recreation Area.

MONDAY - Hockey 8-9a.m., General 9a.m.-noon, Hockey noon-2p.m., General 2-4p.m., Hockey 4-7p.m., General 7-9p.m.

TUESDAY - Hockey 8-11a.m., General 11a.m.-2p.m., Hockey 2-4:30p.m., General 4:30-7p.m., Reserved for Hockey League 7-9p.m.

WEDNESDAY & THURSDAY - Hockey 8-11a.m., General 11a.m.-4p.m., Hockey 4-6p.m., General 6-7p.m., Reserved for Hockey League 7-9p.m.

FRIDAY - Hockey 8-9a.m., General 9a.m.-1p.m., Hockey 1-3p.m., General 3-4p.m., Hockey 4-7p.m., General 7-9p.m.

SATURDAY - General 7-9a.m., Hockey 9a.m.-noon, General noon-3p.m., Hockey 3-5p.m., General 5-7p.m., Hockey 7-9p.m.

SUNDAY - Hockey 7-9a.m., General 9a.m.-4p.m., Hockey 4-7p.m., General 7-9p.m.

General skating is for recreational ice skating purposes only. Hockey is prohibited during general skating time. For more information or ice rink conditions, contact Parks and Recreation at 875-0109.



A HOLIDAY CONCERT

Members of the Alton Central School Concert Band performed during the Annual Holiday Concert last month along with the Intermediate Band, the Jazz Band, and the Beginning Band. All were under the direction of Karen McCarthy.

Krunchies

The Complete Dog Food

Now Just **\$10.99**
Suggested Retail \$10.99



- Made *fresh* and shipped directly to our store
- This product is formulated to meet the AAFCO Dog Food Nutrient Profile for all life stages
- All natural ingredients with no artificial colors or preservatives



BLUE SEAL FEEDS & needs
MARK OF QUALITY SINCE 1868

NEW DURHAM GENERAL STORE
3 Old Bay Rd. New Durham, NH
859-5400
Mon - Fri 6 AM - 8 PM
Sat & Sun 7 AM - 8 PM

W

White Accounting Consultants

Computer System Consulting & Design Complete Accounting Services

Linda D. White

Trask Court, Alton, NH 03809
Tel / Fax: (603) 875-6291




OSGOOD PHARMACY

Prescription Specialists


FARMINGTON, N.H.
TEL. 755-3771 & 755-2440

"FRIENDLY PERSONALIZED SERVICE"
FAX # 603-755-9372

HOW DOES YOUR HOME COMPARE?



<p>College Road Sold: 12/14/93</p> <p>Rooms: 7 Age: 5 Heat: FHW/Oil Siding: Cedar Taxes: \$1,612</p> <p>Listing Agency: Ryan & Toman Realtors Selling: Agency: Spencer/Hughes Real Estate</p>	<p>Wolfeboro \$100,000</p> <p>Bedrooms: 3 Sq. Ft.: 1600 Water: DR. Well Garage: 2 Car Attach. Assess: \$127,900</p> <p>Baths: 2 1/2 Cellar: Full/PC Sewer: Septic Acres: 2.1 Days on Mkt: 259</p>
---	---

Ryan & Toman REALTORS® 

875-2525

HIGHWAY DEPARTMENT LISTS "NO SALT" ROAD AREAS

The Highway Department will no longer be using salt during winter storms on the following roads:

Route 28 North - Gilmans Corner Road to top of Drew Hill Road; Route 28 North - East Alton Fire Station to Gilmans Corner; Rines Road; Route 11D; Alton Mountain Road - Route 11 - Rand Hill Road; Lower Powder Mill Road; Jesus Valley Road; Coffin Brook Road; Range Road; Stage Road; Pond Road North; River Lake West; and Barnes Avenue.

During severe ice storms, some roads may receive a reduced salt application to eliminate hazardous travel for emergency vehicles.



NATURE PROGRAMS PRESENTED AT ALTON CENTRAL SCHOOL

A series of natural science programs were recently presented to students in grades 1-5 at the Alton Central School by Naturalist Sally Perkins of the Libby Museum in Wolfeboro.

The first grade explored the world of newts and snakes and discussed the difference between reptiles and amphibians. Second graders discovered the differences between evergreen and deciduous trees and took an imaginary trip into the life of an oak tree in a program on trees.

Students in the third grade created their own animal totem from clay, beads and feathers using one of the programs in the Native American Series. The history and yearly life patterns of the western Abanaki peoples, a study of New Hampshire Indian history, was presented to the fourth grade and the fifth grade learned the role the beaver and fur trade played in the westward expansion of the United States.



Simply the Best

Bob Buchanan
Charles Lapointe
David Countway



Judy Bagley
Al Gengras
Philip Laurion

BUCHANAN ASSOCIATES, INC.
Main Street, Alton, N.H. 03809

Call: 875-3128

Fax: 875-6378

Should Old Computers be Forgotten?

Upgrade your 286 or 386 to a 486 66mhz from \$600
Add memory from \$45/mb
200mb or larger Hard Disks from \$220

All Books
20% off
the 'FOR Dummies'
series in stock

Multi-media kits
with double speed
drive from \$400

14" Color SVGA
monitors,
non-interlaced
from \$275

Robert Boyce & Co.
Computers & Consulting

Main Street - Alton Bay
875-6066

VISA - MASTERCARD
Accepted



FARMINGTON NATIONAL BANK

ALTON
875.6111

Alton Banking Hours
Monday - Thursday 9am-5pm
Friday 9am-6pm
Saturday 9am-12pm

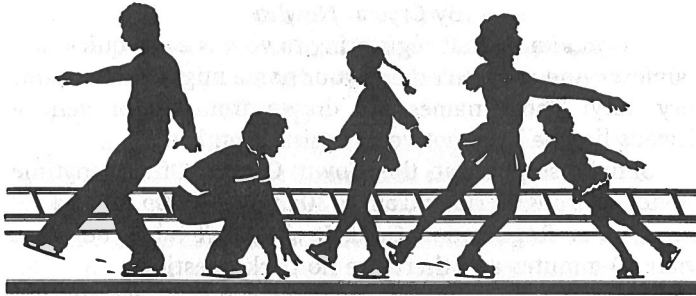
FARMINGTON
755.2255

WOLFEBORO
569.8999

XPRESS
24.



MELVIN VILLAGE
544-2104



MAIN STREET AVAILABLE BY SUBSCRIPTION

Main Street is mailed to all Alton residents free of charge by third-class mail.

Because of its third-class status, Main Street can not be forwarded to those away from home for a period of time. However, anyone who wants to receive this publication year-round with first-class delivery may do so by subscribing to Main Street for \$7.50 per year. This will insure receiving twelve issues mailed to your address.

Subscription requests should be sent to Main Street, Post Office Box 210, Alton Bay, NH 03810. Include your name, mailing address and a \$7.50 check payable to Voice of Alton.

NO SCHOOL TODAY?

You wake up and find it snowed during the night and the roads are iced over! Will there be school today? How do you find out? Call the school? Your teacher? Your bus driver? NO! NO! NO!

You tune your radio to WASR(1420AM), WLNH(98.3FM), WLKZ(105FM), WKXL(102.3FM), WOKQ(97.5FM), WZNN(930AM), or SUNNY(101.5FM) for official school closing announcements.

SANTA'S HELPERS EXPRESS THANKS

We would like to thank all the wonderful people who made donations to the Mrs. Santa Fund. Everything was wonderful! The children were very happy!

SUBMIT YOUR NEWS

Information may be submitted in writing to Main Street about special events sponsored by Alton organizations, club meetings, and news of interest to the general public.

Send any material to P. O. Box 210, Alton Bay, 03810, by the 15th of each month for the following month's issue.

Main Street reserves the right to limit or edit all material. For additional information call 875-7300.

Frustration is not having anyone to blame but yourself.

BRUCE K. JOHNSON
Attorney at Law

HOMESTEAD PLACE, JCTS. RTE. 11 & 28

P.O. Box 817
Alton, N.H. 03809

(603) 875-6131

ALTON OUTDOORS

By Jack Miller

HARD WATER FISHING AWAITS

With the new year comes new seasons for the outdoors person. January begins the calendar year and usually brings with it enough cold weather to start the "hard water" fishing season.

The early birds to this sport know there is some good fishing to be had as soon as the ice is safe since the fish are still fairly active. Another plus for getting out early is that the ice is thinner and easier to cut through.

The Lakes Region provides many places for one to try their hand at ice fishing. Generally, on a lake that contains Lake Trout, only two fishing devices may be used. Most lakes with only warm water species allow six devices. Be sure to check the specific regulations for the water you wish to fish.

Yellow and White Perch are the fish most sought after by the ice fishing crowd. If one hits it right, the fishing can be fast and furious as these are schooling fish. The largest and most aggressive fish are usually caught from the school first -- another reason to be out early in the season.

A catch of perch can easily be converted into some delicious eating. Filets rolled in flour, seasoned to taste, and cooked in a buttered iron skillet produce some sweet tasting fish. The fish roe can also be cooked in the same manner and provide a scrambled egg taste to the meal.

Start out this year with some outdoor fun and good eating. Happy fishing!

Every child should have a pet. A cat, for instance, is always a help when it comes to explaining a broken cookie jar.

THE BAY CHURCH

(Advent Christian)

Pastor Roy Ames
875-6765

WORSHIP - 11 AM
WED. - 7 PM

*Now Worshipping at Moore Chapel on
Alton Bay Christian Conference Center*

FREE HEARING TESTS

Computer Analysis and Expert Repairs - All Makes

Second Opinions

CARNEY DRUG • 10AM-1PM Wed
32 North Main St., Rochester, NH 332-2132

Walk-In Hours
Other Times
By Appointment

HALL'S PHARMACY • 10AM-1PM Mon
Opposite Post Office, Wolfeboro, NH 569-2374

875-6059
or Residence
875-2920

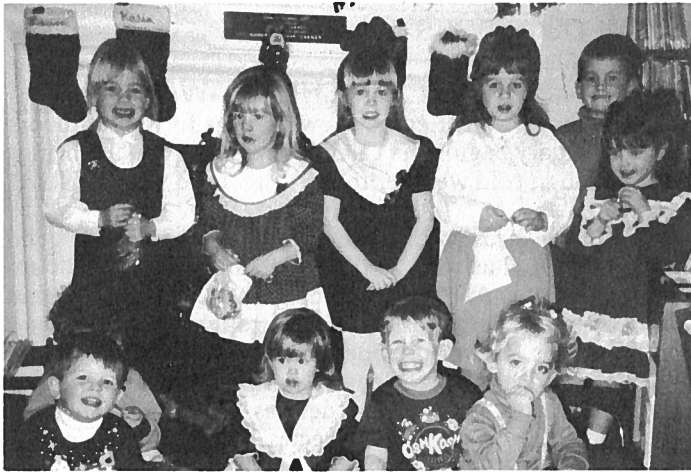
MICRO CANAL AIDS
- AVAILABLE -

Robert I. Williams - Registered Hearing Aid Disp.
HIGHEST QUALITY - BEST PRICES - FAST SERVICE

30 Day Refund on all New Aids if not satisfied.

Ask to see the New Tiny STARKEY Secretear®

FREE HOME VISITS



GILMAN LIBRARY STORY HOUR

The children that participate in the Gilman Library Story Hour enjoyed a Christmas Party last month. They would like to thank the mothers and the staff of the Library who helped make the party a success. The mothers would like to thank Librarian Pat Merrill for her time and efforts each week to make story hour a place for their children to enjoy and learn.

APARTMENT FOR RENT

Fantastic Mountain Views

Apartments starting at \$325/Mo.
Available Now - 1 BR Apt. \$300 (heat & electric included)

FERNCROFT FARM
New Durham Road - Alton
783-4446



ALTON VILLAGE 5 & 10
V & S Variety
Main St., Alton

*We wish you a New Year's
Blessing of Peace and Contentment
Thank You for your support!*

CRAFT ITEM
PANSY BUSH
117 each
With 9 Flowers
Asst'd Colors

NUPRIN
24-Ct. Tablets

Buy One
24-Ct.
Get Second
Free

278



875-5510

**REGISTERING TO VOTE
DOESN'T MEAN JURY DUTY**

By Crystal Newlin

Did you know that registering to vote is easy, quick and painless? And it doesn't mean your name might come up for jury duty! Those names are drawn from motor vehicle driver's license lists, not voter registration lists.

Simply stop in at the Town Clerk's Office anytime Monday through Friday from 8:30a.m. to 4:30p.m. and fill out a Voter Registration Card. It shouldn't take you more than 10 minutes and there are no trick questions.

You don't even have to wait for a formal registration session to change your party affiliation. This can be done at any time at the Town Clerk's Office.

March is right around the corner and in order to vote in town and school elections you must be registered 10 days before election day. Voice your opinions through your vote.

SUPPORT WELCOMED

The publication of Main Street is made possible by the Alton businesses who advertise each month. Support these businesses and mention that you saw their ad in Main Street.

Many individual residents have expressed their appreciation for Main Street and have indicated an interest in supporting this activity financially.

We welcome individual support and accept donations sent to Main Street, P. O. Box 210, Alton Bay NH 03810.

MAILING LIST

Main Street is distributed free to all residents of Alton. Each postal patron with the Zip Code 03809 or 03810 should receive a copy automatically.

If your mailing address has a different Zip Code than either of those and you are an Alton resident, you may receive Main Street each month by calling 875-7300 or send your mailing address to P. O. Box 210, Alton Bay NH 03810.

LACONIA CLINIC



CARE FOR YOUR

DENISE MERRITT, M.D. GENE B. ANDES, M.D.

8 Main Street
Alton, NH 03809
875-6151

Income Taxes
Accounting
Business Consulting
Computerizing

Edward M. Osborn
Accountant

P.O. Box 537 Bay Road
Alton, NH 03809

(603) 875-3673

STICKS AND PUCKS HOCKEY CLINIC

The Alton Parks and Recreation Department is sponsoring its annual Hockey Clinic for youths age 13 and under with instructor Jack Bernard.

The five-week session will include fundamentals of hockey: skating, stick and puck handling, eye/hand coordination, shooting, scoring, goal tending, and team building. Participants will be responsible for providing their own ice hockey stick, skates and pads. Helmets, mouth guards and pucks will be provided by the Parks and Recreation Department.

The clinic will be held at the Alton Town Ice Rink located in the Route 140 Recreation Area every Wednesday, Thursday, and Friday from 4-6p.m. from January 19 to February 18 (weather permitting). The program fee is \$10 per person. Space is limited and early registration beginning January 3 at the Town Hall is recommended.

For more information, call Recreation Director Kellie McGrath at 875-0109.

SALES SPACE ON VOTING DAY

Voting in Town and School Elections will take place from 7a.m. to 7p.m. at the Central Fire Station, Route 140, on Tuesday, March 8.

A limited amount of sales space (baked goods, raffle tickets, calendar sales, etc.) for community organizations will be available on a first-come, first-served basis. Requests for space must be submitted to the Town Clerk to insure a reservation.



*All of Us at
Alton Printing Company
Wish Our
Customers and Friends
A Happy and Prosperous
New Year.*

Alton Printing Company
Church Street
Alton, NH 875-2197

WESTON AUTO BODY INC.



"Keeping You Rolling Since 1839"

Located on the corner in So. Wolfeboro

M-F 8-5
Sat 8-12

24 Hour Towing
569-4400

M/C & Visa
Accepted

DECORATING CONTEST WINNERS NAMED BY CHAMBER OF COMMERCE

In what were probably the most difficult decisions to make since the introduction of the Holiday Decorating Contest by the Chamber of Commerce, three residential and three commercial winners were recently announced.

Paula Glidden, Pearson Road, took first place in the residential category followed by Mr. & Mrs. Al Leblanc, Pearson Road, in second place; and the Howard Family, Stockbridge Corner Road, in third place.

First place in the commercial category was awarded to Jeff's Diner while Alton Bay Bait and Tackle came in second and Ferns Energy was third.

The 1993 holiday season appeared to be the most attractive and brightest season in many years as more and more residents and businesses decorated their homes and buildings.

HAM & BEAN SUPPER

The Alton Senior Citizens will be sponsoring a Ham & Bean Supper on Saturday, January 8, 5p.m. at the Pearson Road Community Center. The cost is \$5 for adults and \$2 for children.

PLANNING BOARD ANNOUNCES ZONING AMENDMENTS HEARING

The Alton Planning Board will hold a public hearing on proposed zoning amendments at 7:30p.m. on Tuesday, January 11, in the Town Hall. The amendments will be voted upon during balloting on Tuesday, March 8.

The amendments are on a variety of subjects such as Floodplain Development; Permitted Uses in Lakeshore Residential, Recreation Service, Residential, Residential Commercial, Rural, and Residential Rural Zones; and the introduction of a Residential Camp Resort Zone for the King Birch/Bayside area, Camp Kabeyun area, Camp Alton area, Camp Brookwoods/Deer Run area, and Brook & Bridle/Babson area.

ELECTION DAY VOLUNTEERS SOUGHT

Town Moderator John Duffek is seeking volunteers to staff the polls for the Town/School Election on March 8. Individuals will be needed to check in voters, provide voter assistance and booth supervision, and count ballots at the close of the polls.

Any registered voter interested in helping should call Duffek at 875-7300 or 569-4441.

SCUBA INSTRUCTION
Equipment Sales & Service
Worldwide Travel Packages

Classes starting soon in
Wolfeboro, Gilford, Ossipee,
Dover and Sanford, ME

DIVE WINNIPESAUKEE
Your Sporting Goods Headquarters!

- SALVAGE
- MOORINGS
- COMMERCIAL
- ICE DIVE & RECOVERY

P.O. BOX 2198, MAIN STREET
WOLFEBORO, NH 03894
(603) 569-8080 - 776-7931


Alton Office Services
Hamel Building • Route 11 • Alton Bay

Income Tax Preparation

Professional • Confidential • Experienced
Evening and Weekend Appointments Available

875-7300 John F. Duffek

**Brook & Bridle
Summer Homes**
On Lake Winnepesaukee
Roberts Cove Road
ALTON, NEW HAMPSHIRE



FULLY FURNISHED
RENTAL HOMES

BONNIE DUNBAR
BOX 270 - MAILBOAT
WOLFEBORO, N.H. 03894 (603) 569-2707



Ricky Rines
Lic. # 7713

Residential & Commercial Wiring
Serving Alton and Lakes Region
For over 25 years

875-5858



Main Street

Printed on 100% Recycled Paper

Bulk Rate
U.S. Postage
PAID
Permit No. 2
Alton Bay, NH

**CAR - RT SORT
POSTAL CUSTOMER**