



# Main Street

Volume XI Number ~~10~~<sup>11</sup>

November  
October, 1995

Alton, New Hampshire

## A HISTORY OF VETERANS DAY

*(The following history of Veterans Day is courtesy of the Department of Veteran Affairs)*

The observance of Veterans Day goes back to 1921 when an American Soldier - his name "known but to God" - was buried in Arlington National Cemetery. The burial site of this unknown World War I soldier became the personification of dignity and reverence for America's veterans.

Similar ceremonies occurred earlier in England and France, where an unknown soldier was buried in each nation's highest place of honor (in England, Westminster Abbey, in France, the Arc De Triomphe).

These memorial gestures all took place on November 11, giving universal recognition to the celebrated ending of World War I hostilities at 11a.m., November 11, 1918 - the 11th hour of the 11th day of the 11th month. The day became known as "Armistice Day".

Armistice Day officially received its name in America in 1926 through a Congressional resolution. It became a national holiday 12 years later by similar Congressional action.

If the idealistic hope had been realized that World War I was "the war to end all wars," November 11 might still be called Armistice Day. But shortly after the holiday was proclaimed, World War II broke out in Europe and shattered that dream.

More than 16 million Americans served during World War II and more than 400,000 died in service during that period. The families and friends of these dead longed for a way to honor their memory - to honor veterans of all wars.

An answer to the dilemma of how to pay tribute to those who had served in this latest great war came in a proposal made by Kansas Congressman Edwin K. Reese. He introduced legislation to change Armistice Day to Veterans Day and make this an occasion to honor those who have served America in all wars.

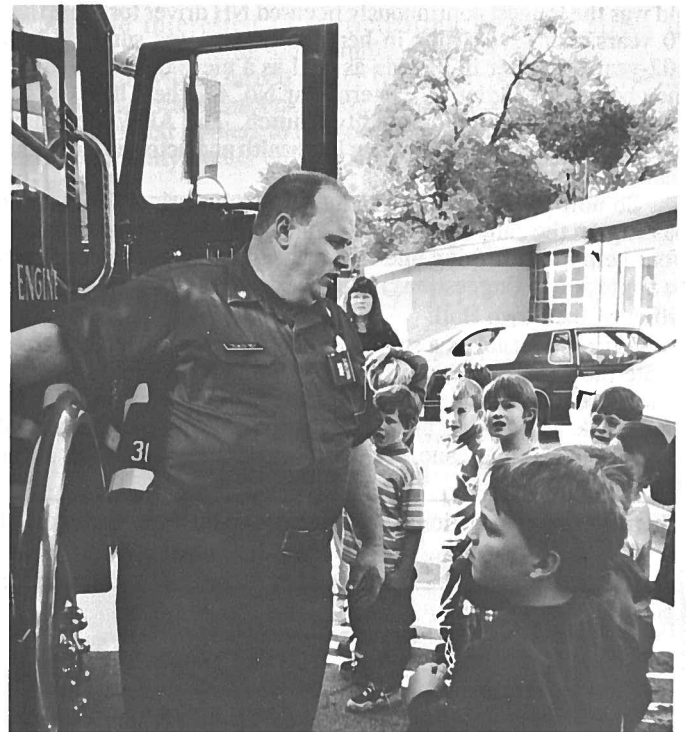
President Eisenhower, in 1954, signed the bill proclaiming November 11 as Veterans Day, and he called for Americans everywhere to rededicate themselves to the cause of peace.

Additional significance was added to Veterans Day in 1958, when two more unidentified American war dead - one from World War II and the other from the Korean Conflict - were brought to Arlington Cemetery from overseas, and interred beside the World War I soldier.

On Memorial Day 1984, an unidentified American war dead from the Vietnam Conflict was interred alongside the other unidentified dead at the Tomb of the Unknown Soldier.

From 1971 to 1975, Veterans Day was observed on the fourth Monday in October in compliance with a 1968 law that changed most national holidays to Mondays.

Believing, however, that the November 11 date held great significance for this country, Congress passed a law in 1975 which returned the holiday to November 11. The law became effective in 1978, the 60th anniversary of the World War I armistice.



## FIRE PREVENTION WEEK

Alton Fire Captain Russ Sample displayed one of the fire engines to youngsters at Alton Central School during Fire Prevention Week in October.

## POLICE ASSOCIATION TO COORDINATE ANNUAL THANKSGIVING BASKETS

The Alton Police Association is coordinating the annual Thanksgiving Food and Fruit Basket program.

Donations of canned goods (Money is also welcome) has begun at the Police Station. Make checks payable to the Police Association, making sure to write "Fruit/Thanksgiving Baskets" on the check or on a piece of paper if sending cash.

The Police Association will prepare and distribute approximately 100 fruit baskets and donate turkeys for the food baskets.

If you are interested in assembling and distributing baskets, or to suggest the name of a shut-in or a needy family, please call Pat Pellowe at 875-3752 or 875-2831.

## MATILDA THE WAYWARD WITCH TO VISIT ALTON ON HALLOWEEN

The hours for Halloween Trick or Treating have been set for 3 to 6p.m. on Tuesday, October 31.

During those hours, the Alton Police Association will host a party at the Police Station and Matilda the Wayward Witch will make a special appearance at A-Bay Carpet, Tile & Interiors on Main Street.

Refreshments will be available at both locations.

**BOSTON POST CANE HOLDER  
IDA WHIPPLE PASSES ON**

101 years young, Ida M. Whipple, holder of the Boston Post cane, remained spry, mentally alert, and belied her chronological age until near the end of a long and fruitful life on September 24. The long since defunct Boston Post was a major Boston and New England newspaper that gave special canes to the towns and cities of New England many years ago to honor whoever was the current oldest resident of each town. Obviously, many have been lost over the years, but several towns, including Alton, still carry on the tradition.

When the cane was presented to Ida Whipple in the fall of 1990 at a Selectmen's meeting, it was noted that the then 96 year old was the longest continuously licensed NH driver for more than 70 years. Longevity runs in her family. She was survived by a 102-year-old sister in Florida as well as a niece there. She was a member of the Order of Eastern Star No. 47, the Alton Garden Club and the Alton Community Church. The Al Wilders have been monitoring and supporting her health and activities for many years.

So now the Board of Selectmen faces the task of finding and passing on the cane to the current oldest living resident of Alton. Your help in identifying and nominating potential "holders" will be appreciated. Suggestions should be directed to the Selectmen's Office at the Town Hall.

Main Street takes a special interest in this matter. It helped locate the cane in the mid 80s and resurrect and reinstitute the cane presentation. Ralph Temple was the first to receive it after a long break. Main Street also had a special display case constructed to hold the original cane. A "twin" was procured and this is the one that is presented.

There are many questions that no man can answer. And most of them are asked by five-year olds.

**TOYS AND CHILDREN'S CLOTHING  
BEING COLLECTED BY FIREFLIES**

Members of the Alton Fireflies, the auxiliary of the Alton Fire Department, are asking for your help in making Christmas a little brighter for some Alton boys and girls.

New clothing and toys may be dropped off at the Farmington National Bank, the Town Clerk's Office in Town Hall, and the NH Electric Coop Office on Main Street by Monday, December 18. Boys and girls sizes 10 to 16 are needed.

Canned goods and donations of money are also welcome. Checks should be sent to Mrs. Santa, 230C Stockbridge Corner Road, Alton, 03809. This money will be used to purchase warm jackets and boots.

Last year, 57 children ranging in age from six months to 17 years were provided with Christmas gifts. The list promises to be even longer this year, so your help is truly needed.

If you have any questions, call Judy Fisichelli at 776-6172 or Daryl Czech at 875-3815.

**SAU 51 TEACHERS OFFERED  
A VARIETY OF LOCAL WORKSHOPS**

The Staff Development Committee of SAU 51 has announced a series of local workshops for staff in the Alton, Barnstead, and Pittsfield schools. The workshops began in October with a program on Microsoft Works - IBM Version and run through May of 1996.

Other workshop topics include American Citizenship & Environmental Ethics, Network Knowledge, Electronic Book Publishing, Media Literacy - The Issues, Teaching with Themes, Using Movement and Book Activities, Using a CD-ROM Drive - PC/MAC, Instructional TV, Language and Literacy Video Conference, A Teacher's Journey to Machu Pichu - The Lost City of the Incas, What is Windows? PC, Children's Writing and Publishing Center, Assessment and Evaluation - Math, Science and Technology Video Conference, Games That Teach, and Environmental Education Video Conference.

A baby sardine was happily swimming in the ocean near its mother when it saw its first submarine. The mother quickly reassured her frightened offspring: "Don't worry, dear. It's just a can of people."

**L.L. BRASWELL**

**BUILDING & REMODELING CONTRACTOR**

Homes, Barns, Additions, Decks,  
Garages, Kitchen and Bathroom



**FREE ESTIMATES**  
Senior Citizens Discount



**875-5315**



Brenda MacKay  
(603) 875-5329

*My Little Sewing Room*



Custom Sewing and Alterations Crafts and More  
"You sow your oats...while I sew your clothes"

Williams Building  
Route 11, Alton Bay



**ORDER YOUR  
HOLIDAY PIES  
AND  
ROLLS EARLY**

AT THE ALTON TRAFFIC CIRCLE  
(603) 875-2861

**OPEN  
THANKSGIVING 8 - 8**



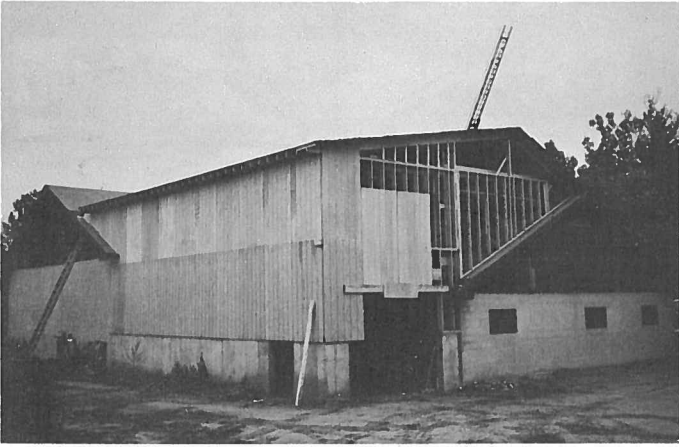
	# pies		
APPLE	_____		
BLUEBERRY	_____		
STRAW-RHUBARB	_____	DINNER	_____
MINCE	_____	FINGER	_____
	# pies	BULKIE	_____
PUMPKIN	_____	WHEAT DINNER	_____
DUTCH APPLE	_____	WHEAT BULKIE	_____
PECAN	_____	VIENNA	_____
			# rolls

NAME \_\_\_\_\_

ADDRESS \_\_\_\_\_

TELEPHONE# \_\_\_\_\_

APPROX. DATE & TIME PICK-UP \_\_\_\_\_



**FIRESIDE CHATS**

By Stan Czech

**CENTRAL FIRE STATION EXPANDING**

Notice anything unusual at Alton Central Fire Station lately? Well, we are expanding. Not a lot, but we need the space to store and maintain our equipment. And, it's all being done without tax money!

All that money that we've been working so hard to earn (Chicken Barbecue, Annual Auction, Old Home Week food booth) finally grew to the point that we felt we could afford to build an addition to the building. All the work is being done by Alton fire fighters under the supervision of Steve Dana.

Phase one will complete the framing, roofing, basic plumbing and concrete floor. Interior work will come later.

**WOODSTOVE INFORMATION**

Anyone contemplating the installation of a woodstove is urged to contact Fire Department Lieutenant Jack Woodland, 875-2691, for a free consultation on guidelines and safety measures. Lt. Woodland also is available to inspect existing installations.

If you want to see someone with driving ambition....just find a teenager who's a year under the legal driving age

**JESSICA LOCKE COMMENDED BY MERIT SCHOLARSHIP PROGRAM**

Alton Central School Senior Jessica Locke has been named a Commended Student in the 1996 National Merit Scholarship Program. A Letter of Commendation from the school and the National Merit Scholarship Corporation, which conducts the program, will be presented by Principal George J. Rogers to this scholastically talented student.

About 35,000 Commended Students throughout the nation are being honored for their exceptional academic promise. They placed among the top five percent of more than a million students who entered the 1996 Merit Program by taking the 1994 Preliminary SAT/National Merit Scholarship Qualifying Test.

**NO SCHOOL TODAY?**

You wake up and find it snowed during the night and the roads are iced over! Will there be school today? How do you find out? Call the school? Your teacher? Your bus driver? NO! NO! NO!

You tune your radio to WASR(1420AM), WLNH(98.3FM), WOKQ(97.5FM), or WZNN(930AM) for official school closing announcements.

**GARDEN CLUB HOLIDAY LUNCHEON**

The Alton Garden Club Annual Meeting and Holiday Luncheon will be held on Tuesday, November 14, at 12:30p.m. at the Lake View Inn in Wolfeboro. Co-chairpersons for the event are Alice Nelson and Muriel Miller. Members are reminded to bring their contributions to the Mrs. Santa Fund.

*Sherman H. Brown*

Complete Cottage Winterization Services

\*\*\*\*\*

Certified Property Watch & Patrol

\*\*\*\*\*

Daily - Weekly - Monthly - Season  
Special Rates

P.O. Box 404  
Alton, NH 03809

Phone:  
(603) 875-7337

**ALTON BAY HEAVY RIGGING**

**Dan Wright, Gen. Contractor**

**(603) 875-6754**



Structural Reinforcement  
Building Jacking for Foundations  
Steel & Timber Renovation & Repair  
Rigging Equipment & Machinery

**McGrath  
Food Center**

Main Street, Alton, NH

875-6104

*For that small town friendly service.*

- \* Fresh meat & deli with instore butcher
- \* Fresh fruits & vegetables
- \* Courtesy & Friendly people



**NEW  
SUMMER  
HOURS**

**OPEN:  
Mon - Sat 7-9  
Sunday 7-6**

**THE BAY CHURCH**



**ADVENT CHRISTIAN**

Worship Sunday 11 AM & 6 PM  
Wednesday Prayer & Study 7 PM

*Sunday Services are held in the Moore Chapel  
Alton Bay Christian Conference Center*

DEMONSTRATING GOD'S LOVE • ACCOMPLISHING GODS TASK  
Roy Ames, Pastor office (603) 875-6765

**NUTRITION CLASS OFFERED AT LAKES REGION GENERAL HOSPITAL**

Lakes Region General Hospital will sponsor a three-week nutrition class beginning 5:30p.m. on Thursday, November 2, at the Hospital on 80 Highland Street in Laconia. Titled "Better Health Through Better Nutrition", each session will be taught by LRGH dieticians.

Topics covered include strategies for evaluating and improving current eating habits, reducing the fat content in meals, techniques for smart supermarket shopping, understanding food labeling, and making healthy menu choices at restaurants.

Classes will be held from 5:30 to 6:30p.m. on Thursdays, November 2, 9, and 16. Enrolment fee is \$50. To register and for more information, call 524-3211, extension 3087.

**HOLIDAY SCHEDULES**

- Veteran's Day (Observed), Friday, November 10  
Town and School Facilities Closed
- Thanksgiving Day, Thursday, November 23  
Town and School Facilities Closed
- Day After Thanksgiving  
Solid Waste Center Open
- Town Offices and School Closed

Two men were talking about a local politician. "Did you hear his last speech?" asked the first. "I sure hope so," replied the second.

*Don't Forget*  
to Order Your Holiday  
*Pies and Rolls Early*  
**Wayside Grocery**

See Ad on page 2



**ALTON OUTDOORS**

By Jack Miller

**FRESH WILD GAME**

As everyone knows, November is the month we all give thanks, just as the Pilgrims did years ago. They gave thanks for their good fortune in this new land and celebrated with a feast. Like them, we have a chance this month to put some fresh wild game on our table as the firearm deer season opens November 8. Alton is within the bounds of Wildlife Management Area J2, which allows the taking of any deer from November 8-11 and antlered deer only from November 12 through December 3.

The muzzle loader deer hunting season which opened October 28 (sorry, not the 22nd as reported in last month's article) will be closing on November 7. If you wish to hunt in other areas of the state be sure to check the regulations as they vary in different management areas. With lots of red and white acorns this year the deer are fattening up nicely.

How game tastes is the responsibility of the hunter from the moment the trigger is pulled to the table. Game killed instantly with a clean shot produces meat that's more flavorful and tender. Game animals, like humans, produce adrenalin and other chemicals when frightened or stressed. These chemicals make the meat tough and "gamey" tasting. A poorly placed shot stresses the animal and may also damage choice cuts or rupture the stomach or intestines.

How quickly and carefully one field dresses an animal also effects its flavor. It should be cooled down as quickly as possible. I was the body cavity out with vinegar and water to neutralize any fluids that might have spilled onto the meat. Following these procedures should produce some tasty game for your table.

An excellent book that details the whole "game care" process from field to table is Dressing and Cooking Wild Game. This is a great book for the beginner or the seasoned hunter, with many photos and recipes for big game, small game, and waterfowl.

Have a hearty Thanksgiving.

Expert  
Collision Repair  
and  
Auto Painting

Master Card & Visa  
Accepted



OPEN

Monday - Friday 8-5

Saturday 8-12

24 Hour Towing

**569-4400**

On the corner in So. Wolfeboro • Route 28

*"Keeping You Rolling Since 1839"*



**MUNICIPAL SPOTLIGHT ON  
PATRICIA A. ROCKWOOD  
TOWN SECRETARY & WELFARE OFFICER**

By Muriel Walker

One the friendly and helpful people you encounter at our Alton Town Hall is Patricia Rockwood. Since 1992, Pat has played a dual role as Secretary for the Office of the Selectmen and that of Welfare Officer.

As Town Secretary, Pat prepares and maintains municipal records. She assists the public, fellow employees, and other town officials and departments as needed and interprets basic administrative decisions and policies. Her work requires knowledge of municipal organizations and programs to provide services to the general public and government officials.

Pat served in a similar role with the selectmen in Ayer, Massachusetts, for three years before moving to Alton in 1990.

As Welfare Officer, Pat handles the intake and applications for persons seeking general assistance benefits and distributes appropriate welfare assistance. She also makes recommendations to the Welfare Director, communicates with providers of housing, food and utilities and administers the departmental budget.

Pat was educated in Wakefield, Massachusetts, and attended Berkshire Christian College in Lenox and Lesley College in Cambridge.

The Advent Christian Church has been an important part of Pat's life and she and her brother and sisters spent most summers between the Alton Advent Christian Campground and their grandmother's farm in East Haverhill, where she met her future

husband.

Pat and David Rockwood were married in 1961 and have three children: Catherine, David and Benjamin. Catherine and David are living on their own, but visit often. Benjamin is living at home and will be receiving his associate degree in marine technology in 1996.

The family did much traveling while David was in the Air Force for 12 years before settling in Ayer. While there, Pat was active in the community as a Girl Scout leader, Cub Scout den mother, and Sunday school teacher.

Presently, Pat is a member of the Happy Hobby Doll Club and the Lakes Region Doll Club and a charter member of the New England Country Drifters Dance Club. She is also a member of the New Hampshire Municipal Secretarial Association and the Alton Bicentennial Committee. Her leisure interests include camping, traveling, reading, boating and music. She and David look forward to construction of their new log home.

Pat enjoys most aspects of both of her jobs, especially meeting people and working with other town employees. She finds interaction with other welfare workers, workshops, and idea-sharing stimulating. She attends the selectmen's meetings and like learning more about the town. Pat feels fortunate to be living and working in Alton and we feel most fortunate to have her here!

A sincere friend is one who will say nasty things to your face instead of saying them behind your back.

**Brook & Bridle  
Summer Homes**

*On Lake Winnepesaukee  
Roberts Cove Road*

ALTON, NEW HAMPSHIRE



FULLY FURNISHED  
RENTAL HOMES

BONNIE DUNBAR  
BOX 270 - MAILBOAT  
WOLFEBORO, N.H. 03894

(603) 569-2707



**NAPA AUTO PARTS - FARMINGTON**

WE CARRY A FULL LINE  
OF AUTO PARTS & ACCESSORIES  
INCLUDING...



- Parts for Imports
- Parts for Trucks
- Paint & Supplies
- Brand Names You Rely On



ASK ABOUT NAPA'S NATIONAL WARRANTY PROGRAM

**NAPA AUTO PARTS**  
Route 11 - Farmington  
755-2264 • 800-734-2269  
Mon-Fri 6 am to 5:30 pm  
Sat 6 am to 5 pm • Sun 9 am -1 pm



Riding  
Lessons

Boarding

Training

Licensed Instructor

Call for appointment:

Barn - 569-6896 Home - 435-7996

**"Reasonable Rates ~ Rewarding Results"**

**10 YEARS AGO.....**

.....voters at a special Town Meeting turned down a proposal to purchase part of Camp DeWitt to be used as a town beach and recreation area.....the Apache Players presented "Wiley and the Hairy Man".....the Chamber of Commerce sponsored a logo contest.....the volleyball team finished the season with a 10 and 6 record

**5 YEARS AGO.....**

.....a new skating rink behind the Alton Central Fire Station was constructed by volunteers, the Recreation Committee, and members of the Highway Department.....1,202 voters turned out for the State elections.....The Hampshire Concert, a renaissance brass quartet, opened the Gilman Concert Series.....VNA nurse Susan Nelson was cited by Governor Judd Gregg for "outstanding service to the people of Alton".....the Farmington National Bank hosted the Chamber of Commerce's first Business After Hours.....Cub Scout Pack 53 participated in the Scouting For Food program.....the Freese Brothers Big Band performed at the Alton Central School to benefit the Music Department.....Shoppers Anonymous planned a trip to Boston's Faneuil Hall.....Alton received the NH Resource Recovery Association's Recycling Drop-Off Center Award.

Young people need to realize that many great truths are spoken through false teeth.

**ALICE ZIEGRA NAMED TO VNA-HOSPICE BOARD**

State Representative Alice Ziegra was elected to the Board of Directors of the VNA-Hospice at its recent annual meeting in Wolfeboro. She joins former president and current Board member Bob Calvert as Alton representatives on the Board. Calvert was reelected at the same meeting.



A 37% increase in local clients was noted for the past year with a 55% increase in patient visits. Ziegra brings

to the Board a nursing background and extensive experience with state health concerns at a time when home nursing and hospice care is growing beyond anyone's wildest imaginations.

**VNA OFFERS GRIEF RECOVERY GROUP**

VNA-Hospice of Southern Carroll County and Vicinity will be offering another of its series of Grief Recovery Groups. The eight-week series is open to all who have experienced the death of a loved one or friend. There is no cost for attending, but pre-registration is necessary. For further information, call 569-1590.

WATER IS OUR MOST IMPORTANT RESOURCE - USE IT WISELY

PUMP SYSTEMS INSTALLED

Est. 1970

*John Streeter*

ARTESIAN WELLS • CABLE TOOL DRILLING  
FULLY INSURED • FREE ESTIMATES

PO BOX 551, SCHOOL ST.  
ALTON, NH 03809  
(603) 875-2490

NH LIC. #277  
ME LIC. #231, MA LIC. #163  
NH MAST ELECT LIC #5738

**Boston  
Replacement Window  
Co.**

Manufacturers of  
Clad Wood • Vinyl Tilt  
Horizontal • Bow & Bay  
Garden Window

FREE ESTIMATES

**875-5315**

**FACTORY TO YOU!**

E  
N  
E  
R  
G  
Y  
  
T  
I  
G  
H  
T

F  
U  
E  
L  
  
E  
F  
F  
I  
C  
I  
E  
N  
C  
Y

*Simply the Best*



Bob Buchanan  
Charles Lapointe  
David Countway  
Tess Smith

Bob Landry  
John Tibbs  
Bob Williams  
Laurence Hallin

BUCHANAN ASSOCIATES, INC.  
Main Street, Alton, N.H. 03809

Call: 875-3128

Fax: 875-6378



*Sheerman H. Brown Plumbing*

WATER SYSTEMS • HEATING SYSTEMS  
BACKFLOW DEVICES

NH MASTERS LIC. #360  
ME MASTER LIC. #02595  
NHPI #555 WSPCC #0004  
BACKFLOW DEVICE  
TESTER #3820

*Call us for your  
Plumbing needs!!*

24 HOUR SERVICE

P.O. Box 404  
Alton, NH 03809

Phone:  
(606) 875-7337

Senior Citizen Discount

**Boards and Committees**

- ADDRESS COMMITTEE - Meets on Call. Chairman David Jensen, 875-5637.  
 AD HOC COMMITTEE - Meets on Call. Chairman Virginia Gray, 875-7474.  
 BICENTENNIAL COMMITTEE - 4th Wednesday, 4p.m., Gilman Library, Chairman Nancy Merrill, 875-2626.  
 BOARD OF SELECTMEN - 1st, 3rd & 5th Wednesday, 6:30 - 9:30p.m., Chairman Russell Jones. Call 875-2161 for Appointment.  
 BUDGET COMMITTEE - 3rd Thursday, 7p.m. Chairman Gregory Fuller, 875-5546  
 CABLE TV ADVISORY COMMITTEE - Meets on Call. Chairman Robert Boudreau, 875-6368.  
 CEMETERY TRUSTEES - 1st & 3rd Monday, 1p.m., Chairman Florence Shaw, 875-2220.  
 CONSERVATION COMMISSION - 2nd & 4th Thursday, 7p.m. Chairman Lisa Erickson Harris.  
 FIRE WARDS - Meet on Call. Chief Russell Jones, 875-7510.  
 GILMAN MUSEUM TRUSTEES - Meet on Call. Chairman Ellamarie Carr, 776-4833.  
 LAND CONSERVATION INVESTMENT PROGRAM - Meets on Call, Chairman Juliet Peverley, 875-7232.  
 LEVY PARK TRUSTEES - Meet on Call. Chairman Jonathan Downing, 875-7243.  
 OLD HOME WEEK COMMITTEE - Meets on Call. Chairman Debbie Burton, 875-5188  
 PARKS AND RECREATION COMMISSION - 1st & 3rd Thursday, 6:30p.m., Chairman Debbie Burton, 875-5188.  
 PLANNING BOARD - 2nd Monday, 7p.m., Chairman Harold Bothwick. Call 875-5095 for Appointment.  
 SCHOOL BOARD - 2nd & 4th Monday, 6p.m., Chairman Arnold P. Shibley, 875-2849.  
 SUPERVISORS OF THE CHECKLIST - Meet on Call. Chairman Alice Ziegra, 875-2151.  
 TRUSTEES OF THE GILMAN LIBRARY - 3rd Monday, 3:30p.m. Chairman Ellamarie Carr, 776-4833.  
 TRUSTEES OF TRUST FUNDS - Meet on Call. Chairman Joseph R. Houle, 875-7321.  
 WATER COMMISSION - 2nd & 4th Wednesday, 8a.m. Chairman George Jones, 364-6870. Office, 875-4200.  
 ZONING BOARD OF ADJUSTMENT - 2nd Thursday, 7p.m. Chairman Milton Jensen, 875-5990.

\*DENOTES A CHANGE OF INFORMATION  
 CALL 875-7300 OR FAX 875-3162  
 TO UP-DATE THE ABOVE LISTINGS

**Main Street**

Published Monthly Since 1985 by  
 Voice of Alton, Inc., A Non-Profit Organization  
 P. O. Box 210, Alton Bay NH 03810

- Editor ..... John Duffek  
 Assistant Editor ..... Robert Boyce  
 Business Manager ..... Jeanne Cole  
 Advertising Manager ..... Luanne Dadura  
 Circulation Manager ..... Robert Smith  
 Asst. Circulation Manager ..... Stephen Connelly  
 Staff ..... Paulette Alden, Rose and George Bornheim,  
 Laurie Boyce, Bob Calvert, Ted Cole, Phyllis Connelly,  
 Daryl Czech, Dot Folsom, Barbara Ingoldsby,  
 Gerry and Frank Metcalfe, Lori Meyerhoff, Tammy Murtagh,  
 Hazel Potter, Jean Roberts, Gertrude and Gerald Row,  
 Laura and George Smith, Nancy Thomas,  
 Muriel Walker, Frances and James Washburn

Printed by Alton Printing Company on Recycled Paper  
 Average Circulation 2,500  
 Phones: Editorial 875-7300 Advertising 875-3216

**Schedules**

- CHURCHES:**  
 Baha'i Fireside - Thursday, 7:30p.m., Holway Residence, Old New Durham Road  
 Bay Church - Sunday, 11a.m. and 6p.m., Wednesday Prayer Meeting, 7:30p.m., Pastor Roy Ames  
 Community Church - Congregational Meeting House, October-April, 11a.m., Baptist Meeting House, May and September, 11a.m., June- August, 10a.m., Dr. Peter E. Roussaki, Pastor  
 First Free Will Baptist Church - Sunday School, 9:45a.m., Church, 11a.m., Evening Service, 6p.m., Wednesday Prayer Meeting, 7p.m., Depot St., New Durham, James Nason, Pastor  
 St. Joan of Arc - Saturday, 5p.m., Sunday, 8 & 11a.m., Msgr. Leo F. Hines, Pastor  
 Wolfeboro Bible Fellowship, Sunday School, 9:30a.m., Worship Service, 10:30a.m. (Summer 10a.m.), Evening Service, 6p.m., Prayer Meeting, Wednesday, 7p.m., Route 28, Lee Button, Pastor
- GILMAN LIBRARY:**  
 Monday & Wednesday Noon to 8p.m., Friday 9a.m. to 5p.m., Saturday 9a.m. to Noon
- SENIOR MEAL SITE:**  
 Monday - Friday, 10a.m. to 2p.m., Pearson Road Community Center
- SOLID WASTE CENTER**  
 Monday, Wednesday, Friday, Saturday - 8a.m. to 3p.m.  
 Sunday - Noon to 3p.m.; Closed Tuesday & Thursday  
 Burn Pit - Rines Road, Saturday, 8a.m. to 3p.m.
- TOWN HALL:**  
 Selectmen's Office, Tax Collector, Town Administrator, Town Clerk, and Welfare Officer - 8:30a.m. to 4:30p.m.  
 Town Planner - Monday, Tuesday, Thursday, Friday 8:30a.m. to 3:30p.m., Wednesday 1 to 3:30p.m., Meetings by Appointment,  
 Closed Noon to 1p.m.  
 Building Inspector - Call 875-5095 for Office Hours and Appointments
- ORGANIZATIONS:**  
 ALCOHOLICS ANONYMOUS - Tuesday, 8p.m., Alton Bay Community Center  
 AMERICAN LEGION - 2nd Monday, 7p.m., Legion Hall  
 AMERICAN LEGION AUXILIARY - 2nd Monday 7p.m., Legion Hall  
 COUNTRY DRIFTERS DANCE CLUB - Thursday, 7:30p.m., Alton Bay Community Center  
 CUB SCOUT PACK 53 - Last Tuesday, 6:30p.m., Legion Hall  
 EASTERN STAR - 2nd Tuesday  
 GARDEN CLUB - 4th Tuesday  
 FLYING CLUB - 2nd Wednesday  
 HAPPY HOBBY DOLL CLUB - 4th Friday, 7p.m., Alton Bay Community Center  
 HISTORICAL SOCIETY - 3rd Tuesday, April - October  
 KNIGHTS OF COLUMBUS - 1st Wednesday, 7:30p.m., St. Joan of Arc Church Hall  
 LIONS CLUB - 1st & 3rd Thursday, 6:30p.m., Mama Rina's Restaurant  
 MASONIC LODGE - 2nd Tuesday  
 PARENT TEACHER COMMUNITY ORGANIZATION - 3rd Wednesday, 7p.m., Alton Central School  
 ST. JOAN OF ARC LADIES GUILD - Last Thursday, 7:30p.m., Church Hall  
 SENIOR CITIZENS - 2nd Wednesday, 2p.m., Pearson Road Community Center  
 VFW - 3rd Monday 7:30p.m., Pearson Road Community Center  
 CALL 875-7300 OR FAX 875-3162  
 TO UP-DATE THE ABOVE LISTINGS

## MAIN STREET INFORMATION CENTER

## November Events

- Wed. 1 - STORY HOUR: 3-5 Year Olds, Gilman Library, 10a.m.  
 Sun. 5 - SKI & SKATE SALE, Alton Bay Community House,  
 9a.m. to Noon  
 Wed. 8 - STORY HOUR: 3-5 Year Olds, Gilman Library, 10a.m.  
 Sat. 11 - VETERAN'S DAY  
 Tue. 14 - GARDEN CLUB ANNUAL MEETING, Lake View Inn,  
 12:30p.m.  
 Wed. 15 - STORY HOUR: 3-5 Year Olds, Gilman Library, 10a.m.  
 Fri. 17 - TEEN DANCE, American Legion Hall, 7 to 10p.m.  
 Wed. 22 - STORY HOUR: 3-5 Year Olds, Gilman Library, 10a.m.  
 Thu. 23 - THANKSGIVING  
 Wed. 29 - STORY HOUR: 3-5 Year Olds, Gilman Library, 10a.m.

## TOWN HALL NOTES

By Scott Dunn, Town Administrator

**KEN ROBERTS IS ROAD SCHOLAR**

The Town is proud to recognize the achievement of Highway Agent Kenneth Roberts upon his recent attainment of the designation, Senior Road Scholar, by the NH Road Agents Association. This status is bestowed upon successful completion of extensive course work in all areas of road maintenance along with demonstration of leadership and professionalism in the field.

## MOOSE HUNTING

Under a rain-drenched October sky, John Temchack, Assessing Agent, became one of the first hunters in the state to kill a moose. The "victim" was a 550 pound bull moose caught somewhere in the mountains of Alton. The exact hunting location seems to be some sort of trade secret.

## 1996 TOWN BUDGET

Preparations are currently underway as the Selectmen and Budget Committee review budget requests for next year. All meetings are open to the public and interested citizens are encouraged to get involved. The upcoming Town Meeting will be held on Tuesday, March 12 (official ballot and elections) and the deliberative session will be on Wednesday evening, March 13.

## PLEASE DRIVE SAFELY

As the reconstruction of Roberts Cove Road and Rand Hill Road nears completion, we ask that motorists use caution and drive within the speed limits. It seems that whenever a road has new pavement, some folks react as though they're driving at New Hampshire International Speedway. Consider this, if you drive too fast you could either hurt someone or get a speeding ticket. Extra police patrols will be watching these roads.

## BICENTENNIAL MURALS

If you haven't been inside the Town Hall lately, you are missing something spectacular. Local artist Joan Chase has just completed two murals depicting the colorful history of Alton. This exhibit is intended to be a permanent feature of the Town Hall main floor, and was made possible through the efforts of the Bicentennial Committee and a generous donation from the Dame family.

Coming next month.....the tax rate is set and tax bills are on the way, but where does the money go?

**FUEL ASSISTANCE APPLICATIONS**

Application forms for fuel assistance may be secured from Patricia Rockwood, welfare officer, at Alton Town Hall.

The Fuel Assistance Program is sponsored by the Community Action Program of Belknap and Merrimac Counties and assists income eligible individuals with paying their energy bills during the heating season. Energy sources may include oil, propane, kerosene and wood.

Eligibility and benefit amounts are determined by the number of household members and their combined gross income. You need not be a welfare recipient to apply.

**Remove & Save**

**Classified Ads**

Alton residents may place classified ads in Main Street each month. Ads are limited to non-commercial, private individuals who have items for sale, items wanted, free items, personals, or help wanted notices. The rate is \$1 for each ad. Main Street reserves the right to refuse any ad. Ads must be mailed with payment to P. O. Box 210, Alton Bay, 03810, by the 15th of the preceding month.

**FOR SALE**

**1972 Slickcraft 204-SS, 155hp OMC 1/0, 20', Red, Hull/Engine** in Very Good Condition, Upholstery Needs Work, Used only on Lake Winnepesaukee, \$3,000 or BO, 617-742-7880

**Magic Chef Electric Stove, Electric Hot Water Heater, \$100 for Both, 875-2194**

**Antique Sewing Machine, Working Condition, \$65, Large Capacity Dryer, Works Good, \$25, King Size Waterbed, 6 Drawers, No Mattress, \$75, 875-5923**

**WANTED**

**Old Milk Bottles and Caps, Old Calendars of Lakes Region, 364-7730**

**Housemate to rent room in house in Alton Bay - 875-6627**

**Small Portable Kerosene Stove, Anyone interested in Old Books, 875-6337**

**PERSONAL**

Thanks to all the town businesses that sponsored me in the annual "Walk By The Sea" to raise money for the NH Head Injury Association. There were over 350 walkers who together raised over \$30,000. Laurie Boyce

Last Week I was informed by the County Attorney's Office that my case of Easter-time in 1991 was finally closed. I would like to thank the people of Alton for their continued help and support during these last four uneasy years. Florence Holway

**FOR THE FUN OF IT**

By Kellie McGrath, Recreation Director

**WINTER SCHEDULE OF ACTIVITIES  
AVAILABLE THROUGHOUT TOWN**

The 1995-96 Winter Schedule, prepared by the Alton Parks and Recreation Department, is now available and may be obtained in Town Hall and at various business locations throughout Alton.

**SKI AND SKATE SALE**

New and used skis and skates will be sold at the Annual Ski and Skate Sale on Sunday, November 5, from 9a.m. to Noon at the Alton Bay Community Center. Those interested in selling equipment may drop off skis, skates and winter clothes at the Parks and Recreation Office until November 3.

**TEEN DANCE**

A Teen Dance for students in grades 5-8 will be held Friday, November 17 from 7 to 10p.m. at the American Legion Hall. Participants will enjoy the Parks and Recreation staff's newest theme dance where they will jam to the current top hits and snack with their friends on great munchies prepared by the staff. Admission is \$3 or \$2 with a tape or CD.

**WATERCOLOR LESSONS**

A series of four lessons in watercolor painting will be offered by John Stetson beginning on Saturday, November 4, at the Alton Bay Community Center. In the adult course, from 9 to 10a.m., participants will complete one 20" by 30" painting as a final project. The cost includes all materials and is \$30. Lessons for children in grades 2-6 are from 10 to 11a.m. and the cost is \$20. Students in grades 6-8 will meet from 11a.m. to Noon and the cost is \$20.



**THE CHECKOUT DESK**  
By Pat Merrill, Librarian

**WELCOME AUTUMN  
IN THE GILMAN LIBRARY**

This is the perfect time to curl up with a good book - and where else to go but your local library - the best bargain in town. Our collection is added to every month and the choice is varied. Our aim is something for everyone!

We have many "how-to" books. Perhaps you need hints on putting your garden to bed or you have a particular project to start. We will be glad to help with any of your questions.

Access to all libraries in the state is now available via computer. Also, individual requests are mailed if speed is not a concern. As a result, our catalog of books has increased immeasurably.

Our audio and video cassette collection is supplemented monthly. In addition, we rotate the collection every three months through our cooperative.

Perhaps you would like to practice your skills on one of our two computers or watch a video tape in the Agnes Thompson Room. Come see us!

**TWO GIFTS RECEIVED**

The Gilman Library recently received two gifts. The first, *Peyton Place* by Grace Metalious, was discovered by Virginia Dore in a shop and she kindly contributed it to the Gilman Library. This book was in great demand years ago because it was supposedly written about a town in New Hampshire.

Also, Christine Consentino has given the Library a punch bowl and ladle for receptions and other events at which refreshments are served.



**NEW LIONS CLUB MEMBERS**

Virginia and Richard Gwinn, center, were welcomed to the Alton- New Durham Lions Club by District Governor Ellie Johnson during her recent official visit to the Club. Richard is a transfer member from the Ipswich Lions Club in Massachusetts. Virginia is a new member sponsored by her husband. Another new member, Cecile Chase, was not present. Club President Wes Nicholson looks on.

You are never too old to learn and you are never too young to know it all.

Michael "Ben"

**McGovern and Son**  
**Plumbing & Heating**

**875-6668**

Main Street Alton, NH

**BOB DOYLE'S**  
**AUTO REPAIR**

• Brakes • Tires • Exhaust •  
Computer Balancing  
ROTORS & DRUMS TURNED  
NH OFFICIAL INSPECTION STATION  
Autos and Motorcycles

VISA MasterCard

8AM - 4:30PM Mon-Fri 8AM - 12 NOON SAT  
12 Depot Road, New Durham 859-3131 Across from the Post Office

**Fall Up-Grade Sale**

USED NOTEBOOKS -  
386 w/CASE, NEW BATT. \$499  
5MB RAM \$499

Check out our Web page  
<http://www.win.net/~boyco>

Replace your 486 motherboard & 4mb Ram  
with a new 75mhz Pentium w/8mb Ram  
\$649 w/trade in  
(\$699 -386 w/4mb trade in)

72 pin simm memory \$44/mb  
16.7 million color SVGA cards \$119

Replace your 250mb hard drive  
w/ a new 1.2 giga byte drive  
\$229 exchange

Windows 95 on display

**Robert Boyce & Co.**  
Main Street - Alton - Next to Ryan & Toman  
603-875-6066 Fax:603-875-6082

**FREE HEARING TESTS**

Computer Analysis and Expert Repairs - All Makes  
Second Opinions

Walk-In Hours  
Other Times  
By Appointment

1-800-538-4064

**CARNEY DRUG** • 10AM-1PM Wed  
32 North Main St., Rochester, NH 332-2132

**HALL'S PHARMACY** • 10AM-1PM Mon  
Opposite Post Office, Wolfeboro, NH 569-2374

**WILLIAMS BUILDING • BY APPT.**  
Route 11, Alton Bay, NH 875-6059

Robert I. Williams - Registered Hearing Aid Disp.  
**HIGHEST QUALITY - BEST PRICES - FAST SERVICE**  
30 Day Refund on all New Aids if not satisfied.  
Ask to see the New Tiny STARKEY Secretear®

**FREE HOME VISITS**

**BICENTENNIAL FOCUS**

By George W. Stone Jr.

**INDUSTRY IN ALTON****Part 2**

Part 1 described a number of industries that developed from the creative ideas of a number of Alton citizens and the availability of markets. The second part of this article continues with the history of the milling industry, the box factory, and ice harvesting.

**THE MILLING INDUSTRY**

Early mills existed where water power existed. In the category of mills one thinks of two kinds. One changed tree trunks into boards. Its principal instrument was the saw blade. The other turned wheat, oats and corn into grist and flour. Its principal instrument consisted of two weighty stones appropriately grooved - the nether one stationary. The upper one revolved with crushing force. The diameters were from three to four feet. In Alton, both kinds of mill once flourished.

A lieutenant from the French and Indian Wars, one Charles Rogers, built the first saw mill - powered by the flow of the Merrymeeting River. It disappeared just before 1799. Captain

Daniel McDuffee from Rochester liked the site and bought it at auction in 1804. In the 1830s, the Wentworth family bought him out, built a new dam, and expanded the service of wood-sawing to include an adjacent grist mill and one for shingles. The family, Enoch and Ichabod, operated the combination for the next 60 years. But during the evening of November 4, 1906, church bells sounded the fire alarm, because a crazed man - one Green, who held a grudge against the town, set fire to the mill, and in separate applications of flame did in the box factory, and the railroad station at Alton Bay. In that flaming sky Alton suffered a great, great loss. These mills were never rebuilt. Besides sidings for houses, the mill in its wood-ends supplied firewood for many of the townspeople.

We know from millstone remains that a competing grist mill - the Leighton Mill, powered from a water flow dammed up from the Cotton Brook as it tumbled down from Gilman Pond towards Chestnut Cove, existed. Perhaps another shingle factory stood nearby, but basic wood products clustered in the Oak Hill area, where, Griffin tells us, besides the box factory, bedsteads were manufactured by one Thurston, piano cases by Anderson, Sweeney and the Market Supply Company, as well as Derby roll-top desk for a time. There also James Twombly erected a bobbin mill, which he ran briefly in 1884. All power derived from the Merrymeeting River.

**THE BOX FACTORY**

Though often referred to, not much evidence exists concerning the once-flourishing box factory on Oak Hill. It had burned in 1906. One source, however, is seen in an existing "Billing Statement" form used by the owner/operator, S. E. Colbath - Manufacturer of Wood and Paper Boxes. He made what he called "Wooden Box Shooks" as a specialty. And what, you may ask, is a shook? It is a set of staves and headings sufficient in number for one hoghead, cask or barrel, "or alternately" a set of parts of boxes - tops, bottoms, sides and ends, ready to be put together. Colbath's tools were many and varied for making his shoos, and his men must have been skilled carpenters.

Griffin tells us there were many box factories in town. They were not the flimsy packing crates of today, but sturdy oak shipping boxes. After 1906, Samuel Colbath seems to have continued making boxes in a shed in his back yard for many years. The old plane from his factory still stands in Irving Roberts' shed just

**DIVE WINNIPESAUKEE**  
Your Sporting Goods Headquarters!


SCUBA INSTRUCTION  
Equipment Sales & Service  
Worldwide Travel Packages

Classes starting soon in  
Wolfeboro, Gilford, Ossipee,  
Dover and Sanford, ME

- SALVAGE
- MOORINGS
- COMMERCIAL
- ICE DIVE & RECOVERY

P.O. BOX 2198, MAIN STREET  
WOLFEBORO, NH 03894  
(603) 569-8080 - 776-7931

**Economized  
Painting**  
QUALITY WORK AT AN AFFORDABLE PRICE.



Interior/Exterior  
Residential/Commercial  
Fully Insured  
Free Estimates  
Snow Plowing Services

RON CHARLES  
PO Box 926  
Alton NH 03809  
603.875.5664

Amstone Sakrete Products  
Authorized  
**Cabot Stain Dealer**

**SERVITAR.**

**ALTON HOME & GARDEN CENTER**  
Where The Customer Comes First  
Rte 11, Alton  
(603) 875-3900  
Mon. - Sat. 7:30 am - 5:30 pm  
Sunday 8:00 am - 3:00 pm

**Alton Funeral Home**  
School Street  
Alton, N.H. 03809  
(603) 875-3311

In the Spirit of Community

**Farmington**  
NATIONAL BANK

Farmington 755-2255	Alton 875-6111	Wolfeboro 569-8995	Melvin Village 544-2104
------------------------	-------------------	-----------------------	----------------------------

Banknorth Group, Inc.  
A Network of Financial Resources

Member FDIC



above the old Camp Alton grounds. It is quite a contraption to view - an assemblage of blades, rollers, cogs, and fly-wheels. The old belts - some 14 feet long, and from three to five inches wide - still hang over the wheels they once turned.

**ICE HARVESTING**

Ice harvesting for Alton in early times was a bounty given by nature in the cold, quiet nights and freezing days of the winter months. Harvesting, storage and marketing of the product was left to man's ingenuity. Ice houses for storage were once widespread throughout the town, with at least six in Alton Bay, including a huge commercial one, and another 10 in East Alton. The houses were plain, windowless, barn-like structures with double walls packed with necessary insulation of straw and sawdust. Ice blocks, well-packed in these sheds could last without melting away for a year, so that the following year's crop was just piled on. Large commercial houses, such as the one at Mt. Major Station needed runs from the Lake, devices for lifting the cakes, and straw - the cleanest preservative - between the layers. At the rear a conveyor belt was in place for taking the blocks and loading them on B & M freight cars for transporting to Laconia, or down to Rochester, Portsmouth and Boston. The picture of the house (probably at the Advent Christian Camp Ground) shows the process of moving the blocks to storage. The building would seem, measured by the height of the men working there, to be about 16

feet high, and proportionately wide. Up to 40 men worked seasonally for the commercial houses.

The market was tremendous, for the need was great to fill the individual boxes of a 1,000 local customers, and to ship out tons-upon-tons to far-flung towns. One senses the size of this market from a news account in 1937 to the effect that \$300,000 a season was taken in by the Boston and Maine in freight charges alone from the "large houses dotting the landscape .... situated all along the shore."

The harvesting process was short and, of course, labor intensive. The ice field had to be brushed off, scraped clean of snow for the clear (called black ice) to be marked in 20 inch squares for cutting. The field to be cut was first grooved by a hand plow with short saw blades, and a side marker device to keep the grooves parallel. The early cutter involved a plow drawn by a horse with a blade about six inches from the top to the points of its chisel-like teeth. The teeth got longer as the blade receded - so as to accomplish a deep cut. After a grid was cut, pieces were broken off first from one side at a time by "needle bars", sharp, thin metal-pointed poles, then floated to conveyors and handlers, then by pulleys moved up slides to the ice house. The grooves were kept open by a hand saw to facilitate the splitting-off process. This saw had a long metal handle with a "T" bar at the end so two hands could grasp and work it.

Remember when you used to put your kids to sleep with bedtime stories? Now they come in at bedtime and tell you stories that keep you awake all night.



**Laconia Clinic -Alton Office**  
8 Main Street, Alton  
875-6151

**Dr. Denise Merritt is very pleased to announce that**  
**Obstetrician/Gynecologists**

**Dr. W. Michael Tovell and Dr. Valerie A. Lasry**  
will be providing

**Obstetrical and Gynecological**  
services at the Laconia Clinic's Alton Office  
8 Main St., Alton

Appointments can be made by calling: 875-6151

**BOATERS**  
**BOAT STORAGE**  
**SPECIAL**

\$20.00 per ft.      \$14.00 per ft.  
Inside/Secured    Outside/Shrink Wrapped  
\*FREE Pick Up & Engine Winterization  
& Spring Delivery

**BEST PRICES IN NEW ENGLAND**  
1-800-640-2279 (NH Only)  
**CALL**  
**603-875-2277**  
**GATEWAY MARINE SERVICES**  
Route 28N • Alton  
SHRINKWRAPPING  
MOBILE SERVICE • BOAT HAULING  
REPAIRS AND STORAGE UP TO 40 FEET  
\*SOME RESTRICTIONS MAY APPLY

LP GAS · FUEL OIL · MOBIL LUBRICANTS · HEATING SYSTEMS



**FERNS ENERGY**

CONCORD • 200 No.State St. • Box 491 • 03301      875-3500  
ALTON • Main St. • Box 446 • 03809      1-800-852-3366  
FRANKLIN • 221 So Main St. • Box 200 • 03235      Service & Operations

**SUBMIT YOUR NEWS AND PHOTOS**

Information may be submitted in writing to Main Street about special events sponsored by Alton organizations, club meetings, and news of interest to the general public. Color or black and white photos of your organization's events are also welcome

Send any material to P. O. Box 210, Alton Bay, 03810, or fax to 875-3162 by the 15th of each month for the following month's issue.

Main Street reserves the right to limit or edit all material. For additional information call 875-7300.

A dime isn't entirely worthless; it makes a fairly good screwdriver when you need it.



**CHRISTOPHER CHOQUETTE NAMED EAGLE SCOUT**

After he completed 22 merit badges and an Eagle Scout service project, Alton student Christopher Choquette was honored at an Eagle Court of Honor by Boy Scout Troop 243 of Gilford.

This event marked the culmination of six years of work for Eagle Scout status. Choquette's Eagle Scout Service Project involved the First United Methodist Church in Gilford. He met with the trustees of the church to identify a project for helping his church. He organized members of the church congregation and troops from around the area to replace damaged windows, paint all of the windows, clear and mark trails around the church property, and raise money for and replace the fence around the playground of the church. He had close to 300 man-hours of labor at the finish of the project not including the many hours of meeting with the trustees to tell them what was happening and organizing the volunteers.

He is pictured above with his mother, Mrs. Roberta Choquette, who is the assistant scoutmaster and members of Troop 243.

**ALTON PTCO GAINS MEMBERSHIP**

Fifteen new members were welcomed at the PTCO meeting last month. This year and in years to come, it will be very exciting to be a member of the PTCO. If you have children in the school, as a parent, or if you don't, as a member of the community, you have a part to play. Everyone is urged to get involved. The next PTCO meeting will be Wednesday, November 15, at 7p.m. in the School.

*Looking for a Real Estate Company to sell your home?*

**WE HAVE WHAT IT TAKES TO SELL YOUR HOME QUICKLY, EASILY AND AT THE BEST POSSIBLE PRICE**

**SOLD**

**Ryan & Toman**  
Realtors

**603-875-2525**

**Call us..and GET TOP DOLLAR FOR YOUR HOME**

*We make it happen for you!*


MAIN STREET ALTON, N.H.

**ALTON VIDEO**

*November Special* Sunday thru Thursday

- 2 General Movies
- 2 Nights
- 3 Dollars

Main Street, Alton, NH 875-2233



**MUSTARD SEED ART & CRAFT SUPPLIES**


Main Street, Alton, NH 03809

**875-CRFT (2738)**

*We at Mustard Seed Art & Craft Supplies wish to thank all of our customers, class instructors, and students for your support.*

*We especially thank our staff: Lisa, Pat & Juleigh for their hard work, enthusiasm and support during "The Move".*

*The Consentino's*



**ALTON VILLAGE 5 & 10**

**875-5510**

*We at Alton Village 5 & 10 are always thankful for your support of our business. At this season of Thanksgiving we add an extra Thank you! Your enthusiasm about our new location is much appreciated!*

*Happy 57th Mom & Dad!*  
*Love & Thanks to your and "Auntie" & our staff.*

*Payroll Service*

Laser Printed Checks • Computerized Check Register  
All State and Federal Forms • Monthly Tax Deposits  
W-2s, W-3s, 940s, 941s, NH Tax & Wage Reports

Alton Office Services can take care of all your payroll needs for as little as \$1.25 per payroll check and that includes your quarterly reports.

*Professional • Confidential • Experienced*

**Alton Office Services**  
Williams Building • Route 11 • Alton Bay

**875-7300** **John F. Duffek**

**MAIN STREET AVAILABLE  
BY SUBSCRIPTION**

Main Street is mailed to all Alton residents free of charge by third-class mail.

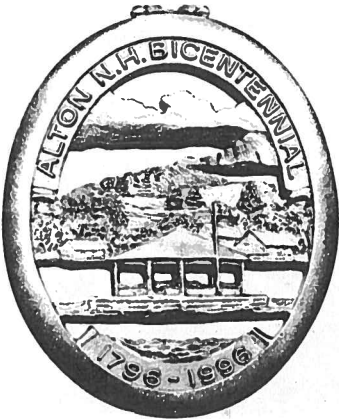
Because of its third-class status, Main Street can not be forwarded to those away from home for a period of time. However, anyone who wants to receive this publication year-round with first-class delivery may do so by subscribing to Main Street for \$7.50 per year. This will insure receiving twelve issues mailed to your address.

Subscription requests should be sent to Main Street, Post Office Box 210, Alton Bay, NH 03810. Include your name, mailing address and a \$7.50 check payable to Voice of Alton.

**HELP WANTED ON NOVEMBER 30**

Anyone interested in participating in Main Street is encouraged to call Editor John Duffek at 875-7300.

No talent will be turned away! We need reporters for general and feature stories; salespersons to call on prospective advertisers; and collators and staplers to help put it all together at the Pearson Road Community Center on Thursday, November 30, at 6:30p.m. Join us!



**BICENTENNIAL MEMORABILIA  
MAKE GREAT HOLIDAY GIFTS**

Designed and crafted by Hampshire Pewter, the Bicentennial Medallions may be purchased from committee members Muriel Stinson, 875-5211, or Virginia Dore, 875-3451. The Town Hall Medallion is \$12.50 and the Bandstand in Alton Bay is \$15. These also are available at the Farmington National Bank and First NH Bank in Alton.

There are also colorful tee shirts and sweatshirts with the bicentennial logo on display at the Village Store, Wayside, and the East Alton Store.

These items make great gifts for the coming holiday season.

**L.L. BRASWELL  
EXCAVATION CONSTRUCTION**

Land Clearing • Drainage Work

Septic System

Foundation • Complete Sitework

Equipment Rental

**875-5315**

*Alton Bay Market*

**875-8888**

WINTER HOURS 6 am - 8 pm Daily

*Proplan, Iams, Eukanuba*

*Pet Food Available*

**Fresh  
Ground Chuck  
\$2.19 lb.**

Pop's Donuts Fresh Everyday  
Hot Soup - Moe's Italian Sandwiches  
Hunting & Fishing Licenses

**Truck Load  
Meat Sale  
3 Days Only  
Nov. 1, 2 & 3**

at

**New Durham General Store**

Old Bay Road, New Durham

**859-5400**

*If you missed our last sale,  
don't miss this one!*

*Pick-up Order Forms*

at

*New Durham General Store  
or Alton Bay Market*

**OUR ELECTED OFFICIALS**

**U.S. SENATE**

**Robert C. Smith**, 332 Dirksen Senate Office Building, Washington DC 20510, 800-922-2230.

**Judd Gregg**, 393 Russell Senate Office Building, Washington DC 20510, 202-224-3324.

**U.S. HOUSE OF REPRESENTATIVES**

**Bill Zeliff**, 224 Cannon House Office Building, Washington DC 20515, 800-649-7290.

**NH EXECUTIVE COUNCIL**

**Ray Burton**, 271-3632(w), 747-3662(h).

**NH SENATE**

**Leo Fraser**, 225-3664(w), 435-6626(h).

**NH HOUSE OF REPRESENTATIVES**

**Gordon Bartlett**, 524-1220(w), 524-6536(h).

**Paul Golden**, 269-4071(w), 269-5511(h).

**Linda Ann Smith**, 293-9637.

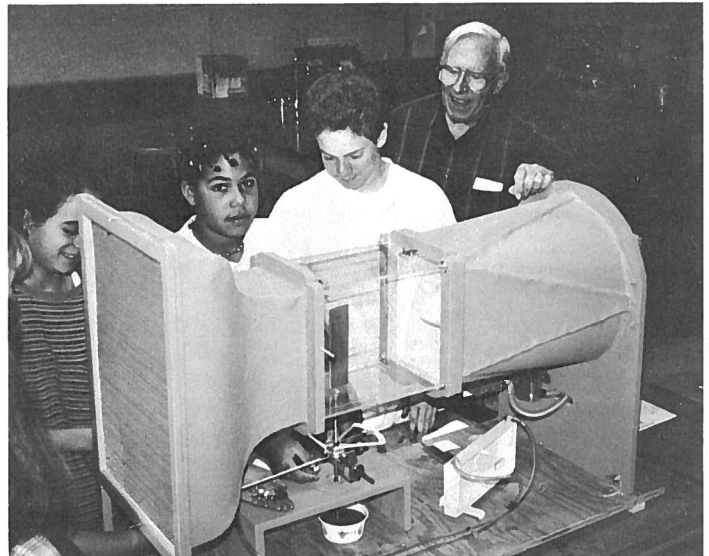
**Alice Ziegler**, 875-2151.

**BOARD OF SELECTMEN**

**Russell Jones**, 875-7510

**Reuben Wentworth**, 875-3388

**Arnold Shibley**, 875-2849



**WIND TUNNEL DEMONSTRATED**

Retired Aerospace engineer Rolf Dutzman, right, recently demonstrated his wind tunnel to a number of science classes at Alton Central School.

**CONCORD MONITOR**

*The Lakes Region Morning Newspaper*

*For a special, limited time, you can get twelve weeks of home delivery for the price of eight - that's just 30 cents a day!!*

- Delivery by 6 a.m. weekdays and 7 a.m. weekends or your money back!
- Moneysaving grocery coupons every Sunday!

**Jerry Fifield, Local Distributor / 875-6768**  
or N.H. Toll Free 1-800-464-3415 Ext. 377

One Monitor Dr., PO Box 1177, Concord, NH 03302-1177

Name \_\_\_\_\_

Address \_\_\_\_\_

Town \_\_\_\_\_ State \_\_\_\_\_ Zip \_\_\_\_\_ Tel. \_\_\_\_\_

Mailing Address: RR \_\_\_\_\_ Box \_\_\_\_\_ Zip \_\_\_\_\_

Description of your Mailbox (Type/Color) \_\_\_\_\_

Directions to your house \_\_\_\_\_

FOR OFFICE USE ONLY: CARRIER PAY \_\_\_\_\_

ROUTE # L06 STARTED \_\_\_\_\_

HOME  
AUTO  
BUSINESS  
LIFE  
HEALTH



AN ALL LINES  
AGENCY

FINANCIAL  
SERVICES

**"GOOD OLD FASHIONED SERVICE"**

Call for special contractors package.

**435-7262**

Leavitt Road, Pittsfield N.H. 03263

**STARK'S**

**SMALL ENGINE REPAIR**

Dudley Rd. Rte 28S, Alton, NH 776-2124

**Free Pickup, Delivery & Free Estimates**

Friendly Service done with your satisfaction in mind.

Blade Sharpening • Chainsaws

Lawn Mowers • Snow Blowers



**Main Street**

Printed on Recycled Paper

Bulk Rate  
U.S. Postage  
PAID  
Permit No.2  
Alton Bay, NH

**CAR-RT SORT  
POSTAL CUSTOMER**