



# Main Street

*"The Voice of Alton"*

Volume XVI Number 12

Alton, New Hampshire - December, 2000

Complimentary

## "LIGHT UP NIGHT" YULETIDE IN ALTON

The Town of Alton is sponsoring a community holiday celebration on Saturday, December 2 from 6 - 9 p.m. There is no charge and everyone is invited to participate. There will be several scheduled events throughout the evening, such as a visit from Santa, refreshments, a museum tour, a musical interlude, and the tree lighting.

This event is named "Light Up Night" because it is the official day of turning on all the holiday lights in the downtown area. The seasonal flags and greenery, as well as the lighting, will be up and ready to kick off the festivities.

See page 10 for the schedule of special events for the evening.

**Happy Holidays  
To One And All!**





# Main Street

Published Monthly Since 1985

by

Voice of Alton, Inc., A Not-For-Profit Corporation  
P. O. Box 210, Alton Bay, NH 03810

Bob Calvert, President of the Corporation; Frank Metcalfe, Vice President; Alice Calvert, Treasurer; Gerry Metcalfe, Secretary; Joseph Harris, Judith Pellowe, Jean Stone and MaryBee Longabaugh, Directors.

### Main Street Staff

Editors.....MaryBee and Bob Longabaugh  
Art and Layout Editor.....Robert Boyce  
Advertising Manager.....Jean Stone  
Subscription Manager.....Judith Pellowe  
Circulation Manager.....Robert Smith  
Assistant Circulation Manager.....James Washburn  
Assistants: Paulette Alden, Laurie Boyce, Alice and Bob Calvert, Ted Cole, Barbara and Dick Cunningham, Dot Folsom, Betty and Dick Frohock, Joseph Harris, Barbara Ingoldsby, Dora McNamara, Gerry and Frank Metcalfe, Amanda Pellowe, Emily Pellowe, Jean Roberts, Shirley Smith, Margaret Sudbey, Nancy Thomas, Connie and A.R. Van de Meulebroecke, Frances Washburn, Sandy and Charles Westen, Cliff Wooldridge

ALL OF THE ABOVE PERSONS AND "BY-LINED"  
CONTRIBUTORS ARE VOLUNTEERS. *NO ONE IS PAID*  
FOR HIS OR HER SERVICE TO Main Street.

Printed on Recycled Paper  
by Alton Printing Company  
Average Circulation (1999) = 2,958

Advertising: 875-5397 Adv. Fax: 875-5399  
Editorial: 875-5067 or E-mail: <mbelrjtl@worldpath.net>  
Editorial Fax: By Prior Arrangement

Subscriptions are available to receive Main Street  
by first-class mail for \$10.50 for 12 issues.

### IMPORTANT NOTE TO ADVERTISERS

The cost for "display" ads in Main Street is \$12.50 a column/inch. If you wish to take out a contract for 6 or 12 months, you have to pay in advance, receiving a 10 per cent discount off the cost. **Monthly billing is being discontinued.**

The DEADLINE for placing new ads is the 15th of the month, or the first business day thereafter. PAYMENT for new ads or continuing an existing ad is due at the same time.

It is up to YOU to get copy and payment in by the 15th. Send them to the Advertising Manager either by placing them in the rural mail box in the Bank of New Hampshire in Alton or to P. O. Box 210, Alton Bay, NH 03810.

If you wish to take out a contract and stop worrying about monthly payments arriving on time, contact our Advertising Manager at 875-5397.

FROM THE SUPERINTENDENT'S DESK  
By Donald E. Parks  
Superintendent of Schools



### EDUCATIONAL PROFILES COMING

For the first time this school year the New Hampshire Department of Education will be issuing School District Profiles. This profile will provide school districts with a wealth of information. Included will be student assessment results on the New Hampshire Educational Improvement and Assessment Program (NHEIAP) tests, enrollment information, attendance data, student/teacher ratios, teacher salary information, financial information about the district, number of Advanced Placement courses, students who attend college, and SAT results.

This Educational Profile can be utilized by school districts to make informal decisions regarding educational improvement, professional development needs, staffing, resource allocation, and curriculum. The profile will be presented to the faculty and the School Board in December, along with student results on the California Achievement Tests over a ten-year period, in-depth reports on the NHEIAP results, and a ten-year review of the SAT results. After these presentations are made an action plan will be developed that will outline the steps the district will follow to address areas of concern. A copy of the district profile will be made available to Alton residents.

Our ultimate goal is to improve student achievement and to provide students at Alton Central School with the best education possible.

### GENEROUS GIFT EXPANDS GREENSPACE

By Lisa Erickson-Harris, Chair  
Alton Conservation Commission

Alton increased its conservation land recently with a significant donation from Charles and Sandra Westen. The property consists of approximately 17 acres located in the Foss Meadow on Frohock Brook Road. Foss Meadow is an extraordinary wetland, home to abundant wildlife and is located in close proximity to the town forest. The Alton Conservation Commission hopes this parcel will serve as a building block for more contiguous open space in the Alton Mountain area.

The Commission is very interested in creating similar greenspaces throughout the town. To achieve this goal it is actively pursuing additional easements and donations. We sincerely thank the Westens for their generosity. Please contact me at (603) 364-6388 if you have any questions.



# J.R. CHINA

Restaurant & Lounge

Rt. 11 & Riverlake West • Alton Bay, N.H. (at the Alton Bay Inn)

December 15 & 16  
DJ Tim Thompson Music Junction

OPEN  
7 DAYS  
A WEEK



603-875-8899

take out available



# Main Street's Inside Front Page



## SOLID WASTE CENTER REQUESTS FINES

By Joe Harris

Alton Solid Waste Center Director Warren Zitzow has requested permission from the Board of Selectmen to begin enforcing fines for violations at the recycling facility. At the Selectmen's November 6 meeting Zitzow stated that in recent months violations have increased at an alarming rate. He suggested that fines be imposed on violators as a solution to curb the increasing abuses regarding recycling.

Alton has a mandatory recycling program and requires that glass, plastic, tin cans, and newspapers be separated and disposed of in designated containers and bins. In the past several months recyclable materials have been found in bags thrown into the refuse hoppers. These have to be removed, sorted by the staff, and then disposed of in the proper bins. Zitzow stated this is time consuming and increases the cost to the town for proper disposal. Violators are being verbally warned for a first offense and repeat offenders are mailed letters informing them of their violations.

The Selectmen will further consider this issue at a future meeting pending the input of the Town Administrator and Chief of Police.

## PHOTOGRAPHY CONTEST OPENS

Attention photographers. Main Street is seeking entries to its first "Uniquely Alton" photo contest. The editors and staff invite **everyone** to participate. The rules are simple: photos entered may be of any person, place, or event of local interest that tells why Alton is special and unique.

All submissions should be 8" x 10" photos mounted on an 11" x 14" mat. Please, **no** glass or framed pictures, due to the limited display space available. All entries will be on display in the lower lobby of the Gilman Library beginning in February. Photos of winter scenes are suggested, as the contest will be seeking entries representing and displayed throughout the four seasons. Both black & white and color photos are welcome.

Entry forms will be available beginning December 1 at the Main Street mailbox located in the lobby of the Bank of New Hampshire. A separate box will also be provided for drop-offs at the bank, or you may contact Joe Harris at 364-6388 to arrange pickups or answer any questions.

Ribbons will be awarded for best of show, people's choice, and young photographer categories. Winners will be chosen based on composition, quality, creativity, and experience. The editors and staff reserve the right to refuse any photo that in their opinion does not meet the quality, standard, or size requirements. So get out your cameras and have some fun.

## SCHOOL BUILDING COMMITTEE CONTINUES TO WORK

By Wayne D. Fraser, Alton School Board

The Alton School Board and the Site Acquisition and Building Committee would like to thank everyone who made the school land acquisition successful. With this portion of the project completed the building committee is now moving forward with the next phase of the project. This will be to decide what is the best use of the land for the school district.

The current charge to the committee from the school board is to investigate four possible uses for the newly acquired land. These possibilities are: 1) construction of a new high school, 2) construction of a new elementary school and renovations to the current facility to make it a high school, 3) additions and renovations to the current facility and athletic fields at the new site, and finally 4) reviewing possible options involving the Barnstead School District.

At the present time the committee is planning to hold public forums to gather input into the best possible uses for the land. The first forum — as yet to be scheduled but probably in January — will serve as an opportunity for the committee to formally present the pros and cons of each option. The committee will also enthusiastically gather information from the public as to what their opinions are.

There will not be any definite costs associated with any of the options at this time; rather, after gathering the public sentiment cost analysis will be the next step for the committee. This information will then be made available at another public forum before any recommendations are made. Ultimately, after all of the public input has been gathered and all of the cost benefit analysis completed, the committee will make a recommendation to the school board as to what it believes is the best long-term solution to the serious overcrowding in the Alton Central School.

Anyone interested in joining the building committee should contact the SAU Office at 875-7890.

Thanks again for your support and watch for an announcement of the date and time of the first public forum.

## LOCAL ELECTION RESULTS

By Bob Longabaugh

The election of a President and Governor were not the only reason to bring out 64 percent of Alton registered voters on November 7. At stake for town residents were also one State Senator and four State Representative seats.

Main Street staff members (see page 2) Rob and Laurie Boyce did quite well for themselves by becoming a new Senator/Representative team, as well as a husband/wife team of 30 years. Rob continued his winning ways by besting Dennis P. Vachon 12,069 to 10,185 in Senate District 4, which includes seven other towns and the City of Laconia in addition to Alton. Laurie joined the freshmen representative ranks by gathering the most votes, 3,068, in Belknap County District 5.

Alton resident Stan Czech with 2,569 votes and Gilmanton's David Russell with 2,992 votes returned to the legislature also representing District 5. Belknap County District 6, which includes Alton with seven other nearby towns, saw Gordon Bartlett add to his 10 years of seniority in Concord.

*Mary Jane Dascoli*

Notary Public  
Justice of the Peace



Alton Fire/Rescue Dept.  
Secretary/EMT  
Box 472 Alton, NH 03809

Office: (603) 875-0222  
Home: (603) 776-5971

*Alton Coach Inc.*  
*Luxury Transportation Services*  
- Featuring -  
Lincoln Town Cars  
*Airports • Weddings • Proms • Anniversaries*  
*Nights Out • Business Trips*

P.O. Box 537  
New Durham Road  
Alton, NH 03809

Tel.: 603-875-3672  
800-352-2536  
Fax: 603-875-3675

*Ned Osborn - Member New England Livery Association*



BREAKFAST SERVED ALL DAY  
LUNCHEON SPECIALS



**OLDE BAY DINER**

RTE 11, ALTON BAY

875-3700

NEW DURHAM ALTON FARMINGTON

**JOE GOODROW'S  
RUBBISH REMOVAL**

875-4488  
235 STOCKBRIDGE CORNER ROAD  
ALTON, NH 03809



**UP, UP, AND AWAY!**

**By Zach Christy and Jason Snell**

Have you ever flown a plane? No, we don't mean flown *in* a plane, we mean actually flown a plane? Thanks to Laura Dwyer, Enrichment/Gifted and Talented Coordinator of Alton Central School (ACS), and Gloria and Bill Watson of the Alton Flying Club, several ACS students were given this opportunity on October 21.

That day we, along with Renee LaFreniere, Meghan St. Cyr, and Amanda Tharpe, went to the Laconia Airport to meet with Gloria and Bill Watson — the driving forces behind this enriching educational opportunity. Other participants were Alan Emerson, head of Emerson Aviation, Peter Pijoan of LRPA-TV, and Dakota, the dog.

In the "souvenir photo," above, are (left to right): Bill Watson, Alan Emerson, Warren Patterson, Jason Snell, Zach Christy, Renee LaFreniere, Meghan St. Cyr, Amanda Tharpe, Gloria Watson, and Dakota.

Mr. Emerson very carefully explained all aspects of plane safety as he went from gas line, to rudders, to screws, to tire inflation, etc. After the aircraft was deemed "safe," Mr. Emerson loaded Jason and Renee into the passenger compartment and Zach into the copilot's seat. Each of us received flight instructions and were actually able to fly the plane one at a time. Renee was able to fly over Gunstock Ski Area and see it from another angle. Zach was amazed that steering was done by foot pedals instead of a steering wheel.

Meanwhile another pilot, Warren Patterson, using a smaller aircraft, put Meghan in the pilot's seat and loaded Amanda and Peter (and his video equipment) aboard. Meghan and Amanda both had the chance to take off, fly, and land.

Once again on the ground Mr. Emerson explained the computer system that portrays weather patterns from all across the world. He also went over flight plans and air congestion in airport areas. Speaking of congestion, the Watsons pointed out that this airport is filled with various private jets during the N.H. International Speedway Races.

All of us thought this was an absolutely incredible experience. Each came away with a certificate from the Young Eagles Club, along with buttons, magazine subscriptions, and other pertinent aviation information. The next step would be to have a flight doctor examine each before they may become certified as a student pilot.

The hands on learning offered by the Watsons entranced us, and their interest in laying the foundation for future pilots is to be commended. Laura Dwyer and Mary Christy, English Teacher, coordinated this event; they hope that more community initiated educational opportunities like this one will arise for the students at ACS. All of us who took off on October 21 are most eager to continue "soaring."

## COMMUNITY CHURCH HOLIDAY SERVICES

Please, come join us during our special Christmas and New Year's activities. Beginning on December 17 at 6 p.m., the children will perform "Twas the Night Before: A Christmas Musical." Come and enjoy the message the angels, shepherds, and kings have to tell us about our Savior's birth.

Dress warmly and bring your best voice as we go caroling. Meet at the Congregational Church on December 20 at 5:45 p.m.

On December 24 all are welcome to join us for our Christmas Sunday services at 8:30 and 11 a.m. and then our candlelight Christmas Eve services at 7 and 11 p.m. It will be a special evening of scripture and joy-filled music.

We will end the year with a New Year's Eve party with activities, games, and refreshments, concluding with a watch night service at 11:30 p.m.

We pray that you will celebrate with us during this most joyous season.

## CHRISTIAN WOMEN'S LUNCHEON

The Lakes Region Christian Women's Club, an interdenominational group with no formal membership, will be sponsoring "A Merry Berry Luncheon" on Wednesday, December 13, from 11:30 a.m. - 1:30 p.m. at the Conference Center on Route 11 in Alton Bay.

"Greening In" is the Special Feature with Linda Siracus of Wolfeboro arranging Christmas florals. "Glittery Notes" is the Special Music with Sherry Garcia of West Alton and "Setting the Point" will be presented by Special Speaker, Nancy Williams of Salem.

Reservations for the lunch and available complimentary nursery may be made by calling: in Alton — Janet at 875-2032 between 2 - 6 p.m., or Kim at 875-8173; in Gilford — Harriet at 524-7194, or Faith at 293-8073.

## HOLIDAY EVENTS AT THE BAY CHURCH

Do you dread Christmas the way most kids dread brussels sprouts? You're not alone. Many people simply dislike the season's busyness and the accompanying materialism. So how do you replace the brussels sprouts? Can you consciously prepare yourself for a "gourmet" Christmas that honors Jesus Christ, or will it be just another candy Santa Christmas?

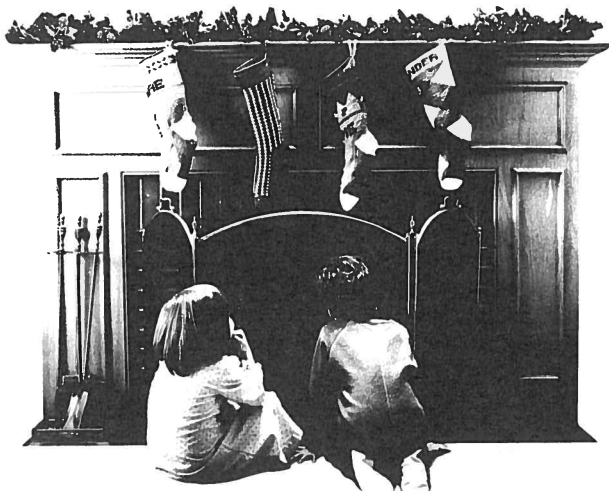
The Bay Church invites you to join in an all-church series called "Seasoning the Season: Bringing Out the Flavor of Christ in Christmas Traditions." They will share practical suggestions for overlooking meaningless busyness and materialism to experience the true essence of the season.

This seasonal Advent celebration will take place from Sunday, December 3, through Christmas Day and the 12 days of Christmas. Everyone in the church (children and adults, families, couples, and singles) will be involved. Anyone in the community is welcome to take part. Attend Sunday worship services at 10:45 a.m. and 6 p.m., Moore Chapel at the Christian Conference Center. There will be a children's Christmas party in the conference center dining hall on Saturday, December 9, starting at 12 noon, followed by an adult Christmas party the same day at 6:30 p.m.

A highlight of the season will be the appearance of Rev. Don Plummer, a trumpeter and vocalist, on Sunday, December 17, at 6 p.m. A frequent guest during the summer season, he will present a solo concert that evening. A free-will love offering will be taken for the guest soloist.

Special Christmas Eve and New Year's Eve services will be conducted during the usual Sunday evening services on December 24 and 31. The Bay Church will also join the Carol Sing on Wednesday, December 20, meeting at the Community Church at 5:45 p.m. For more information and/or an Advent Calendar, call 875-6765.

# Do your kids think getting down the chimney is the miracle of Christmas?



Children should know there's more than one reason to celebrate Christmas.  
This year, introduce them to the real meaning of the Holiday season,  
and let Jesus give Santa Claus a little competition.

The Christian Churches of Alton  
The Bay Church ~ The Community Church ~ St. Joan of Arc  
(see Information Center for worship times)



*Fresh, Pure N.H. Honey*

# SPRING FEVER FARM

HC 72 Box 116, Lane Drive  
Alton, New Hampshire 03809-9604

BEN CHADWICK *Keeper of the Hives*  
BEV CHADWICK *Keeper of the Books*

Lane Drive is off from Coffin Brook Rd. Alton  
**603-875-3544**

PERSONAL INJURY      MEDICAL MALPRACTICE      GENERAL LITIGATION  
BUSINESS LITIGATION      ACCIDENTS

EXPERIENCED TRIAL LAWYERS

## LAW OFFICES OF PAUL M. MONZIONE

(FORMER PARTNER OF MELVIN M. BELLI)

NO FEE for initial phone or office consultation  
or unless a recovery is obtained

*\* Day, Evening, Weekend Appointments Available \**

PORTSMOUTH OFFICE      ALTON HOME OFFICE  
603-334-9800      603-859-6555

Offices in NH, MA, CA with Affiliate Offices throughout US



**BUCHANAN ASSOCIATES, INC.**  
www.maxfieldrealestate.com  
email: maxb@worldpath.net

**FAX#875-6378**

**1-800-871-5687**

**875-3128**

MAIN ST., ALTON, NH

- Residential REAL ESTATE
- Commercial SINCE 1954
- Waterfront



## Colonial Siding

*Home Remodeling*

Alton Bay 875-2132  
1-800-562-4441

Vinyl Siding, Window/Door Replacement, Additions  
Kitchens & Baths, Gutters & Shutters, Porch Enclosures  
Insured. Free Estimates

HOME  
AUTO  
BUSINESS  
LIFE



AN  
ALL  
LINE  
AGENCY

"GOOD OLD FASHIONED SERVICE"

Call for special contractors package

**435-7262**  
Leavitt Road, Pittsfield

## ALTON COMMUNITY SERVICES PROGRAM

**By Elizabeth Sweeney**

The Alton Community Services Program (ACSP) completed the month of October having served 30 adults and 33 children in its food pantry.

The pantry will be closed both Christmas and New Year's weekends while we move to our new location in the basement of the Town Hall. The pantry will have its own entrance on the Depot Street side of the building.

The ACSP invites all interested citizens and prospective volunteers to join us on Thursday, November 30, at 7 p.m. in the second floor auditorium of Town Hall. We will be celebrating the one year anniversary of dedicated service by many of our volunteers. Coffee and pastry will be served, and several speakers will present their programs and how they benefit the community.

Included will be Ray Houle, Alton Town Administrator, speaking on assistance that can be provided by the town. Bill Johnson will join us to speak on the benefits provided by the Society of St. Vincent dePaul; Ellie Snell will explain the Serve New England Program; Shirley Bentley and Jane Quimby will revisit how the Caregivers program works; and Brenda Carey will be speaking on the benefits offered to our citizens by the University of New Hampshire Cooperative Extension Program. We will close with a presentation of certificates to our faithful volunteers by Elizabeth Sweeney, Director of the ACSP.

Come join us and learn more about the ACSP.

## ITS NOT TOO LATE TO SUPPORT MRS. SANTA FUND

Each year many community service organizations, led by the Alton Fireflies (the women's auxiliary of the Alton Fire Department), come together to provide the less fortunate children of Alton a Christmas bright with promise. For several years the Mrs. Santa Fund has provided gifts for children newborn to age 17 and some of our senior citizens as well. This list grows longer each year.

If you have not yet done so, you still have a day to drop off new and good-used clothing and toys at the Alton Town Hall. December 1 is the deadline. Cash donations, which are used to purchase warm coats and boots, are also welcome. Donations are to be made payable to Mrs. Santa Fund and are sent to either P. O. Box 755 or c/o Bank of New Hampshire, Main Street, Alton 03809.

If you need help in providing necessities for your children or know of a family who would benefit from this program, contact Mrs. Santa's Elves by December 8: Elf #1, Daryl Czech (875-3815), or Elf #2, Sharon Hannafin (875-3079).

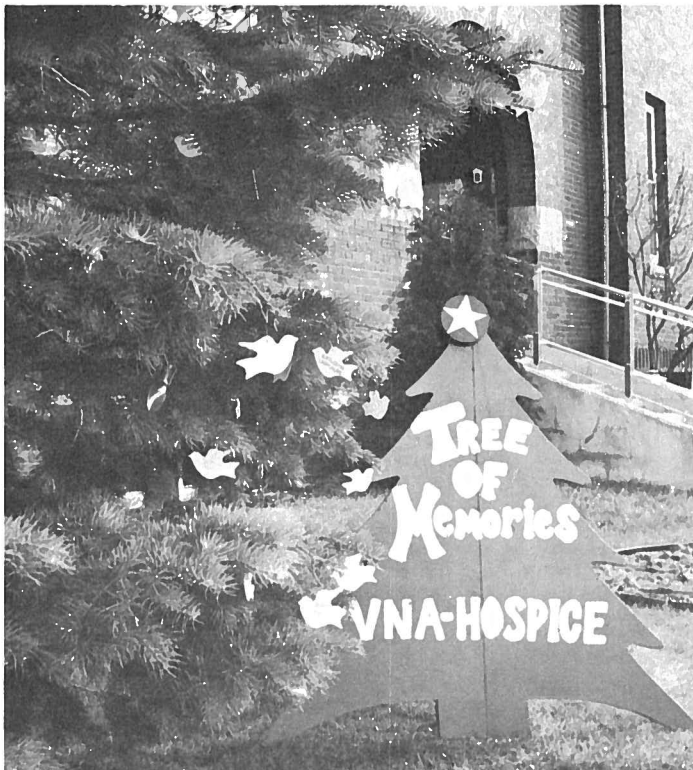
Make this holiday season a merry one for all of our friends and neighbors in Alton by supporting Mrs. Santa's Elves.

## "OPERATION BLESSINGS" AGAIN A SUCCESS

**By Paulette Wentworth, Alton Town Hall**

It is gratifying once again to announce that "Operation Blessings" has been an overwhelming success. It is all made possible by the generosity of those of you who made a donation. I would like to give a special thanks to the Police Association for donating towards the turkeys and Cunniff Painting for donating pies that were made by the Alton Bay Lakeview Market which also supplied the turkeys.

The generosity of the Alton townspeople was outstanding. It made for a plentiful Thanksgiving for all. I would personally like to thank anyone who contributed towards this project to make it such a big success.



**TREE OF MEMORIES ON DECEMBER 9**

By Bob Calvert

The Annual Tree of Memories observance, sponsored by the VNA-Hospice of Southern Carroll County and Vicinity, will be held on December 9 at 11 a.m. at the tree in front of the Alton Town Hall. This program began about three years ago. It provides the opportunity for those who have lost loved ones to place a white "dove" on the tree in loving memory of that person. The ceremony is held on different dates and times in several other locations in the VNA-Hospice "territory."

To arrange for somebody to be included in the observance, a contribution (\$25 suggested) is made to VNA-Hospice and sent to VNA-Hospice of Carroll County and Vicinity Inc., P.O. Box 1620, Wolfeboro, New Hampshire 03894, and identified for "Tree of Memories." At 11 a.m. on December 9 the names will be called aloud as each dove is placed on the tree by the donor or a representative of VNA-Hospice.

**MOVIE MANIA**  
**ALTON**

**MORE COPIES OF THE HITS**

**NOVEMBER**  
Mission Impossible 2  
Perfect Storm  
Titan AE  
Big Momma's House  
Fantasia 2000  
Chicken Run  
Gladiator  
X-Men  
The Replacements

**DECEMBER**  
Gone in 60 Seconds  
Nutty Prof. 2 - Klumps  
Land Before Time 7  
Air Bud - World Pup  
Road Trip  
Saving Grace  
The Art of War  
Scary Movie • Shaft  
Sopranos • The Cell

**& More! NEW GAMES WEEKLY!**

**Movie Mania ~ Alton**

Your full time **OPEN 7 DAYS** Video Store

Main Street (Next to Village Pizza)  
**875-0027** FOR GUARANTEED RESERVATION

**Barbara's Little Beauty Shop**



Family Hair Care  
Senior Citizen Discounts  
OPEN TUES. - FRI.

N. Barnstead Rd.  
Ctr. Barnstead, NH

776-3920  
Barbara Elliott



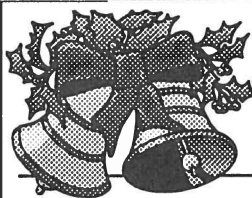
**The HoneyDo Handyman**

from **O.I. Management, a Pure Trust Organization**  
HOME & OFFICE, CONSTRUCTION & REPAIR, ON THE LEVEL & BY THE SQUARE  
\*\*\*\*\*

COMM. & RES. INTERIOR CONSTRUCTION,  
INSTALLATION, & REPAIR.  
MILLWORK, DOORS, CEILINGS, WINDOWS,  
WALLS, TILING, PAINTING, FLOORS, & MORE.  
EXPERIENCED, TRUSTWORTHY, AND INSURED.

"I DO WHAT I SAY, WHEN I SAY IT!"

Call **GREG @ 603-875-4063** for a free estimate



**Happy Holidays**

to our patrons and Friends.

Thank you for a wonderful year.

Linda, Buddy & Staff

**Dockside Restaurant**

Alton Bay ~ 875-2110

Reserve now for New Year's Eve Dinner  
(vacation will be Dec. 19 to Dec. 29)

**Merrymeeting River Resort**



Enjoy the quiet solitude of the  
gently falling snow with a walk to  
the river to watch the beaver and  
otter working until ice....

A family mobile home resort  
featuring seasonal and  
year round homes

Your Hosts:  
The White Family - Don, Sandy, Eric & Jean Horn  
One mile from Alton circle on Rte 11 East 859.4811

Drop by and See what's for sale.

♥ Dry Flower Arrangements ♥ Baskets ♥ Folk Art ♥ Pottery ♥ Candles ♥

Looms  
Boards  
Dolls



Quality hand crafted gifts.

**WINTER HOURS:**  
Thursday - Monday  
10 AM - 5 PM

Route 11, Main Street  
P.O. Box 236 ♥ Alton Bay, NH 03810  
(603) 875-8787

♥ Appliqued Sweatshirts & Children's Wear ♥ Quilts ♥ Tole Painting ♥

Woodworkings  
Ceramics

# HEARING AIDS

**Robert I. Williams**  
BC-HIS

**HIGHEST QUALITY  
BEST PRICES  
FAST SERVICE**

**1-800-538-4064**

**EXPERT SERVICE  
ALL MAKES**

Offering

Starkey's PFS - 6000

Computer testing & fitting system. Improving accuracy and comfort in Hearing Correction. Digitally Programmable Sequel® Available

**HALL'S  
PHARMACY**  
10-1 Mondays  
Wolfeboro 569-2374

**WILLIAMS BLDG**  
By Appointment  
Rt. 11 Alton  
875-6059

**CARNEY DRUG**  
10-1 Wednesdays  
Rochester  
332-2132

**FREE HOME VISITS - FREE HEARING TESTS**



## ARTHUR W. HOOVER ATTORNEY AT LAW

*Admitted in NH and Maine*

*Quality legal service in the areas of real estate, estate planning, corporate and business law, and family law.*

ALTON PROFESSIONAL CENTRE  
MAIN STREET  
P.O. BOX 817  
ALTON, NH 03809-0817

Tel: 603-875-2800  
Fax: 603-875-3394



## Dockside Country Properties

Each Office Independently Owned and Operated

**Karen A. Poisson**  
REALTOR® NH & ME

7 Depot Road  
New Durham, NH 03855

Toll Free: (800) 371-8007  
Office: (603) 859-5500

[www.nhlakehomes.com](http://www.nhlakehomes.com)



Serviceing the Lakes Region



## Our Town CONSUMERS CHOICE

With Savings & Discounts



*Would you give a discount to a heating customer who uses 2.2 million gallons of propane, kerosene and fuel oil???*

**We are that group!** With 75 members last year and 1000 members today, (176 Alton Members) We got a big discount on fuel this year!

**HOME & AUTO INSURANCE**  
~ just approved by NH ~  
**HANOVER INSURANCE** is offering a 10% group discount to **Our Town Consumers Choice** Members.

**WORKERS' COMPENSATION**  
~ approval pending ~  
**We need 50 more businesses** to get a 10% + discount.  
**Businesses call ASAP**  
**776-2488**

*We have many more services ~ please check our website:  
[www.ourtowncoop.com](http://www.ourtowncoop.com) or call 776-2488 for details*

No cost to join and receive our monthly newsletter—small fee to use services.

## MUSIC THEATER PROGRAM PROPOSED

By Joe Harris

The Alton Board of Selectmen have received a proposal for an after school music theater program that would use the Town Hall stage as its venue. Carlos Martinez and his wife, Jane Cormier, suggested a plan that would utilize the auditorium on the second floor as a theater. The program would consist of a 15-week theater arts curriculum culminating in a musical stage performance of "A Night On Broadway."

The proposed program would offer classes meeting once a week, from 3:30 - 5:30 p.m. Acting, drama, voice, and dance instruction would be studied, along with scenery, lighting, and selections from musicals such as "Oliver," "Grease," and "The Sound of Music." Enrollment would be held to 25 students. Martinez suggested donating any profits from the shows to the Parks and Recreation Department.

Martinez and Cormier are accomplished opera performers, directors, and instructors. In 1992 they co-founded OPERAFEST! Of N.H., a group of performers between the ages of 11 and 18 who perform classical choral repertoire in foreign languages. They have entertained audiences in England, Salzburg, and Vienna, as well as the United States and will be performing at Alton's "Light Up Night" (see schedule on page 10).

The Selectmen asked Martinez to return to their next meeting. They approved his preliminary proposal but required an inspection and approval by the Fire Chief for seating capacity of the area in Town Hall to be utilized.

## LATE BREAKING NEWS

Main Street was already at the printers when word was received that Raymond W. Houle, Alton's Town Administrator, has submitted his resignation to take effect on December 19. He is leaving Alton to become the first Town Manager in Millbury, Massachusetts.

## CHANNEL 25 SEEKING VOLUNTEERS



Alton is increasingly showing up on Lakes Region Public Access Television's (LRPA-TV's) Channel 25. In the last two months there have been special programs dealing with the school property vote and the "charrette" devoted to redesigning Main Street. Recently the Alton School Board started videorecording their meetings for later playback on the public access channel.

The Channel 25 program schedule lists the regular meetings of the Alton Selectmen, usually twice a month. The continuation of this series is in jeopardy, however. There are two volunteers taking turns in videotaping the meetings, Frank Decoster and Bob Longabaugh, and Longabaugh has announced his intention to move on to other things early next year. LRPA-TV would very much like to see the videotaping continue on a regular basis and hopes that there will be others to keep the camera running. All the necessary equipment is provided by LRPA-TV; what is needed is the peoplepower to "aim and shoot."

Selectmen meetings are not the only venues that would benefit from additional volunteerism. Video coverage of Alton events is limited only by the imagination of potential producers. Think of things that you would like to see on Channel 25, and then call Peter Pijoan at 528-3070 to sign up for equipment and training.







**TOWN FOREST GETS EXPANDED PARKING**

**By Joe Harris**

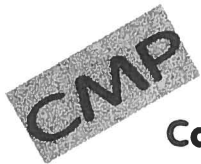
Visitors and day users of the Alton Town Forest on Avery Hill Road will be pleased to see a new and improved parking area, recently completed by the Alton Highway Department under the supervision of Ken Roberts, Highway Agent. The area has been enlarged, graded, and landscaped, offering more parking spaces and better access to the town forest.

The forest, located off Avery Hill Road where it intersects Alton Mountain Road, encompasses 65 acres of woodland and trails. The Mike Burke Trail is approximately 1 1/2 miles long, winding through the woods, with spectacular views of the lakes region at its highest point. It begins and ends at the parking lot. More trails are planned for future development. The trail system is open from sunrise to sunset for hiking, snowshoeing, and cross-country skiing, offering outdoor recreation for all seasons. So get out and take a hike, or wax up the cross-country skis as winter isn't far away!

**SCHOOL CLOSED? NEW INFORMATION**

The Alton Central School (ACS) has revised the list of radio stations that will be carrying their notices of school closings and related information. Starting this month the official announcements for ACS will be broadcast over radio stations: WEVO (89.1FM), WKXL (1450AM & 102.3FM), WLKZ (104.9FM), WLNH (98.3FM), WNNH (99.1FM), WOKQ (97.5FM), and shown on WMUR-TV (Channel 9).

**Bookkeeping & Business Services**



Blue Hills View  
RR#1 Box 212D  
Farmington, NH 03835

**Catherine M. Place**

Phone/Fax (603) 755-2550  
E-Mail place@worldpath.net

**HUPP'S WATER SYSTEMS**

Box 1054, Alton, NH 03809  
Pumps, Filters, Tanks & Wells  
Call our Water Specialist at:  
603-875-6969 or 603-387-0029  
License #1346

*Like your furnace: Your water system should be serviced yearly. Systems running incorrectly mean higher electric bills. Mention this ad and receive a system check or water test for \$25.00.*



**ALTON HOME & LUMBER CENTER**

Rte 11, Alton, Open 7 days  
(603) 875-3900

Mon-Sat 7:30 am - 5:00 pm  
Sunday 8:30 am - 4:00 pm

**CHRISTMAS TREES & WREATHS**

Fisher Plow Parts  
Ice Melts and Shovels

**"SEASONS GREETINGS TO ALL"**

*"We're the Problem Solvers"*

**PREMIUM VINYL SIDING CO.**

**CENTRAL N.H. SEAMLESS GUTTERS**

Complete Vinyl Siding and Trim Coverage  
Replacement Windows and Doors  
(Seamless Aluminum Rain Gutters)  
Any Length ~ Many Colors  
Gutter Cleaning Also Available



**PHONE/FAX (603) 776-3545**

**Alton Funeral Home**

School Street  
Alton, NH 03809  
(603) 875-3311



**OPEN**

**7 DAYS**

Rentals  
Fax / Copies Service

Main Street - PO Box 600  
Alton, NH 03809-0600  
(603) 875-2233  
FAX: (603) 875-2288



# Main Street's

## DECEMBER EVENTS

Sat.	2	"LIGHT UP NIGHT," see schedule below
Mon.	4	BOOK SALE, Library, Dec. 4 - 9, see Checkout BOYS BASKETBALL @ Derryfield, 6:30 p.m.
Tue.	5	HOLIDAY TEA, Gilman Library, 2 - 4 p.m., see invitation GIRLS BASKETBALL @ Derryfield, 6:30 p.m.
Wed.	6	BINGO, American Legion Hall, 6:30 p.m.
Thu.	7	GIRLS BASKETBALL @ Concord Christian, 6:30 p.m. BOYS BASKETBALL @ Concord Christian, 8 p.m. WINTER CHORAL CONCERT, Grades K-3, 6:30 p.m.
Sat.	9	"TREE OF MEMORIES," Town Hall, 11 a.m., see story GIRLS BASKETBALL vs. Portsmouth Christ., 5:30 p.m. BOYS BASKETBALL vs. Portsmouth Christian, 7 p.m.
Mon.	11	BOOK DISCUSSION GROUP, Gilman Library, 6:30 p.m., see Checkout GIRLS BASKETBALL @ Moultonboro Academy, 7 p.m.
Wed.	13	CHRISTIAN WOMEN'S LUNCH, Conference Center, 11:30 a.m., see story BINGO, American Legion Hall, 6:30 p.m. GIRLS BASKETBALL @ Sunapee BOYS BASKETBALL vs. Moultonboro Academy, 7 p.m.
Thu.	14	BLOOD PRESSURE CLINIC, Pearson Road Community Center, 10:30 a.m. - 12 noon WINTER CHORAL CONCERT, Grades 4-12, 7 p.m.
Sat.	16	SANTA CLAUS VISITS AMERICAN LEGION, Legion Hall, 1 p.m., see story
Sun.	17	BAY CHURCH, Concert, 6 p.m., see story COMMUNITY CHURCH MUSICAL, 6 p.m., see story
Mon.	18	GIRLS BASKETBALL vs. Laconia Christian, 5:30 p.m. BOYS BASKETBALL vs. Laconia Christian, 7 p.m.
Wed.	20	COMMUNITY CHURCH CAROLING, see story BINGO, American Legion Hall, 6:30 p.m. GIRLS BASKETBALL vs. Pittsfield, 7 p.m.
Thu.	21	HANUKKAH WINTER SOLSTICE, 8:39 a.m. EST BOYS BASKETBALL vs. Pittsfield, 7 p.m.
Fri.	22	DECEMBER BREAK BEGINS, Alton Central School
Sat.	23	CAROLING/AMERICAN LEGION, 4 p.m., see story
Sun.	24	CHRISTMAS EVE, Church services, see stories
Mon.	25	CHRISTMAS
Wed.	27	BINGO, American Legion Hall, 6:30 p.m.
Sun.	31	NEW YEAR'S EVE BAY CHURCH, Special Services, see story COMMUNITY CHURCH PARTY, see story

TO LIST YOUR EVENT SUBMIT WRITTEN INFORMATION TO:  
(1) P. O. Box 210, Alton Bay, 03810 or (2) Farmington National Bank  
(Main Street box). **Be sure to include a phone number.**

## "LIGHT UP NIGHT"

### Schedule of Events, Saturday, December 2

6 - 7 p.m.: Santa will arrive (6 p.m.) by fire truck at the rear entrance of the Gilman Library.

6 - 9 p.m.: The Community Church on Main Street will host refreshments of cookies and hot cider and festive live music to entertain you. Displayed will be a unique paper village designed and created by Rev. Peter Bolster and beautiful Alton photographs by Brenda Griffin.

6 - 9 p.m.: The Gilman Museum will be open for a tour of their fine antiques. Live piano music will be performed throughout the evening.

6 - 9 p.m.: Town Hall will display a Victorian doll collection.

7 - 8 p.m.: At Town Hall OPERAFEST! Of NH will feature four professional singers and a children's choir to perform holiday musical favorites and selected readings of the season.

8:15 - 8:30 p.m.: Ginny Douglas Park will be the arena for sing-along caroling with OPERAFEST! Of NH.

8:30 p.m.: Ginny Douglas Park for the tree lighting.

## CIVIC INFO

### 2000 TAX RATE SET

At a recent meeting of the Board of Selectmen Town Administrator Ray Houle announced that the tax rate for Alton for the year 2000 had been set. The total amount per \$1,000 of assessed value is \$18.79, up \$1.03 from last year. The breakdown is as follows: Town = \$4.74; School = \$5.41; State = \$6.57; and County = \$2.07. Alton continues to be a donor town for school funding.

### DATES AND DEADLINES FOR 2001

#### By Lisa Waterman, Town clerk

The following is a list of dates and deadlines for the 2001 Town of Alton elections and meeting.

December 12, 2000, is the last day to accept petitions to amend Zoning Ordinances.

The Supervisors of the Checklist will be meeting at the Town Hall on January 23 from 7 - 9 p.m. to allow people to register to vote, especially if they wish to run for an office.

The filing period for anyone interested in a town office is January 24 - February 2.

February 6 is the last day to petition Selectmen for a Warrant Article for the town election.

The town election will be held on Tuesday, March 13 with the Annual Town Meeting the following night. Anyone who will not be in Alton on election day can come to the Town Clerk's Office and apply for an absentee ballot for the town and school elections.

It is time to renew your "Aquatherm" permit for those of you who have a bubbler or circulator to protect your dock or breakwater. The cost is 50 cents and will expire July 1.

The Town Clerk's Office wishes everyone a very happy holiday season.

### ALTON BUDGET COMMITTEE NEEDS YOU!

The Budget Committee announces that there are two vacancies on the committee. This is an excellent opportunity for an individual to learn about our town government, our school system, and the budget process. Please contact Virginia Bergeron, Chair, by calling 875-6714 or e-mailing <vickie@worldpath.net> if you are interested.

### ALTON CEMETERY TRUSTEES

#### By Paulette Alden, Secretary

The Alton Cemetery Trustees meet on the first and third Tuesday of the month. The times vary during the year and are posted in both the Alton and Alton Bay Post Offices, as well as in the Alton Town Hall where the meetings take place. The trustees do not meet from December to late March.

### ALL NIGHT PARKING BAN IN EFFECT THROUGH APRIL 1

According to a town ordinance, motor vehicles or trailers are not permitted to be parked or stopped on any highway in Alton between 10 p.m. and 6 a.m. from November 15 through April 1, or at any other time during snow storms when snow removal maintenance is being performed.

The fine is \$10, and vehicles in violation of this ordinance may be towed away at the owner's expense.

# Information Center

## SCHEDULES

### CHURCHES:

- Baha'i Fireside — Thu., 7:30 p.m., Holway Residence, Old New Durham Road
- Bay Church — Sun. School, 9:30 a.m.; Worship Services 10:45 a.m. and 6 p.m., Moore Chapel of the Alton Bay Christian Conference Center; Wed. night Family Supper, 6 p.m. and Fellowship Groups, 7 p.m., Lombard Center Dining Hall; Rev. Robert H. Hett, Pastor, Rev. John Fogell, Assoc. Pastor
- Community Church — Sun. School, 9:30 a.m.; Sun. Services, 8:30 and 11 a.m., Congregational Meeting House, Church Street; Wed. Kids Club, 3 p.m.; Thu. Bible Study (Baptist Meeting House, Main Street), 7 p.m.; Rev. Peter Bolster, Pastor
- First Free Will Baptist Church — Sun. School, 9:45 a.m.; Church, 11 a.m.; Evening Service, 6 p.m.; Wed. Prayer Meeting, 7 p.m.; Depot St., New Durham; Pastor James Nason
- St. Joan of Arc — Weekend Masses at Baptist Meeting House, Main Street, Sat., 4 p.m. and Sun., 8:30 a.m.; CCD (Sun. School) 9:30 a.m.; Weekday Masses in Parish Hall: Mon. - Sat., except Wed., 8 a.m., with Rosary before at 7:30 a.m.; Confessions, Sat., 4 p.m. or by appointment; Fr. Richard Wegman, Pastor. Sun. Mass St. Paul's in Barnstead, 10 a.m.
- Wolfeboro Bible Fellowship — Sunday School, 9:30 a.m.; Worship Service, 10:30 a.m.; Evening Service, 6 p.m.; Wed. Prayer Meeting, 7 p.m.; Route 28; Pastor Scott Button

### GILMAN LIBRARY: 875-2550

Mon. and Wed., 11 a.m. - 7 p.m.; Tue. and Fri., 9 a.m. - 5 p.m.; Sat., 9 a.m. - 1 p.m.; closed Thu. and Sun.

### SENIOR MEAL SITE: 875-7102

Mon - Fri., 10 a.m. - 2 p.m.; Pearson Rd. Community Center

### SOLID WASTE CENTER: 875-5801

Sun., Mon., Fri., and Sat., 7 a.m. - 4:45 p.m.  
Closed Tue., Wed., and Thu.

Rines Road Pit — Sat. and Sun., 8 a.m. - 3 p.m., closes Dec. 23

### TOWN HALL: 875-2161

Selectmen's Office, Tax Collector, Town Administrator, Town Clerk, and Welfare Officer, 8:30 a.m. - 4:30 p.m.

Building Inspector — 875-5095 for hours and appts.

Parks and Recreation — 875-0109 for info and appts.

Planning Director — 875-5095 for hours and appts.

### ORGANIZATIONS:

Alcoholics Anonymous — Tue., 8 p.m., Alton Bay Community Center

American Legion — 2nd Mon., 7 p.m., Legion Hall

American Legion Auxiliary — 2nd Mon., 7 p.m., Legion Hall

American Legion Jr. Auxiliary — 1st Tue., 6 p.m., Legion Hall

Boy Scout Troop 53 — Wed., 6 p.m., Central Fire Station

Community Services Program, Sat., 2 - 4 p.m., 875-2273

Cub Scout Pack 53 — Last Tue., 6:30 p.m., Legion Hall

Eastern Star — 2nd Tue., when meeting, 875-5211

Flying Club — 2nd Wed., 6:30 p.m., 859-7900

Friends of the Gilman Library — 2nd Tue. (in season), Library

Garden Club — 4th Tue. (in season), Congregational Mtg. House

Girl Scout Jr. Troop 630, Wed., 5 p.m., Pearson Road Community Center

Happy Hobby Doll Club — 4th Fri., 7 p.m., Pearson Road Community Center

Historical Society — Watch for announcements of programs, Apr. - Oct.; Nov. - Mar., Museum open by request, 569-2629

Knights of Columbus — 1st Wed., 7:30 p.m., Pearson Road Community Center

Lions Club — 1st and 3rd Thu., Foxy Johnnie's Restaurant, New Durham, 6:30 p.m.

Masonic Lodge — 2nd Thu., when meeting, 875-7448

Moms In Touch — Mon., The Bay Church, 8:30 a.m., 875-2866

P.T.S.A. — 3rd Wed., Alton Central School Library, 7 p.m.

Senior Citizens — 2nd Wed., 1 p.m., Pearson Road Community Center

VFW — 3rd Mon., 7:30 p.m., Pearson Road Community Center

CALL 875-5067 TO UPDATE THE ABOVE LISTINGS

## BOARDS AND COMMITTEES

- BOARD OF SELECTMEN — 1st & 3rd Mondays, 6 p.m., 5th Monday, varies, Chairman James C. Washburn, call 875-2161 for appointment.
- BUDGET COMMITTEE — 3rd Thursday (twice a week in "budget season"), 7 p.m., Chairman Virginia Bergeron, 875-6714\*
- CEMETERY TRUSTEES — 1st & 3rd Tuesdays, 4:30 p.m., Town Hall, Chairman Shirley Lane, 875-5864.
- CONSERVATION COMMISSION — 2nd & 4th Thursdays, 7 p.m., Town Hall, Chairman Lisa Erickson-Harris, 364-6388.
- FIRE WARDS — 3rd Wednesday, 6:30 p.m., Central Fire Station, Chairman Richard Quindley, 875-2910
- GILMAN MUSEUM COMMITTEE — Meets on call, Chairman Bill Crocker, 875-2161.
- LAND CONSERVATION INVESTMENT PROGRAM — Meets on call, Chairman Juliet Peverley, 875-7232.
- LEVEE PARK TRUSTEES — Meet on call, Chairman Dick Jones, 875-3855.
- PARKS AND RECREATION COMMISSION — Meets on call, Chairman William Lionetta, 875-0109.
- PLANNING BOARD — 2nd Monday, 7 p.m., Chairman Bonnie Dunbar; call 875-5095 for appointment.
- SCHOOL BOARD — 2nd & 4th Mondays, 6 p.m., Chairman Joyce Hopper, 776-8733
- SUPERVISORS OF THE CHECKLIST — Meets on call, Chairman MaryBee Longabaugh, 875-5067.
- TRUSTEES OF THE GILMAN LIBRARY — 3rd Monday, 3:45 p.m., Chairman David Countway, 875-2550.
- TRUSTEES OF TRUST FUNDS — Meets on call, Chairman Joseph R. Houle, 875-7321.
- WATER COMMISSION — 2nd & 4th Thursday, 8:30 a.m., Water Department Office, Chairman Reuben L. Wentworth, 875-4200
- ZONING BOARD OF ADJUSTMENT — 1st Thursday, 7 p.m., Chairman Fran Washburn, 875-5095.
- \*DENOTES A CHANGE OF INFORMATION  
CALL 875-5067 TO UPDATE THE ABOVE LISTINGS

## OUR ELECTED OFFICIALS

### U.S. SENATE

Robert C. Smith, 307 Dirksen Senate Office Building, Washington DC 20510-2903; Phones: (800) 922-2230, (202) 224-2841, Fax: (202) 224-1353; e-mail: [opinion@smith.senate.gov](mailto:opinion@smith.senate.gov)

Judd Gregg, 393 Russell Senate Office Building, Washington DC 20510-2904; Phones (202) 224-3324, (603) 225-7115, Fax (202) 224-4952; e-mail: [mailbox@gregg.senate.gov](mailto:mailbox@gregg.senate.gov)

### U.S. HOUSE OF REPRESENTATIVES

John E. Sununu, 1229 Longworth House Office Building, Washington DC 20515; Phones (202) 225-5456, (603) 641-9536, Fax (202) 225-5822; e-mail: [Rep.Sununu@mail.house.gov](mailto:Rep.Sununu@mail.house.gov)

### N.H. EXECUTIVE COUNCIL

Ray Burton, 271-3632 (Concord), 747-3662 (Woodsville)

### N.H. SENATE

Robert Boyce, 875-7371, E-mail: [rboyce@worldpath.net](mailto:rboyce@worldpath.net)

### N.H. HOUSE OF REPRESENTATIVES

Gordon Bartlett, 524-1220 (w), 524-6536 (h)

Laurie Boyce, 875-7371, E-mail: [lboyce@worldpath.net](mailto:lboyce@worldpath.net)

Stanley Czech, 875-3815, E-mail: [sdzczeh@worldpath.net](mailto:sdzczeh@worldpath.net)

Dave Russell, 364-7449, Fax: 7448, E-mail: [russells@worldpath.net](mailto:russells@worldpath.net)

### BELKNAP COUNTY COMMISSIONER

Christopher D. Boothby, 527-5400

### BOARD OF SELECTMEN

James C. Washburn, Chairman, 364-7413

Harold M. Bothwick, Jr., 875-6262

Stephan McMahan, 875-6322

Arnold ("Pete") Shibley, 875-2849

Reuben Wentworth, 875-3388





**NAPA AUTO PARTS - FARMINGTON**

WE CARRY A FULL LINE  
OF AUTO PARTS & ACCESSORIES  
INCLUDING...



- Parts for Imports
- Parts for Trucks
- Paint & Supplies
- Brand Names You Rely On



ASK ABOUT NAPA'S NATIONAL WARRANTY PROGRAM

**NAPA AUTO PARTS**

Route 11 - Farmington  
**755-2264 • 800-734-2269**  
Mon-Fri 6 am to 5:30 pm  
Sat 6 am to 5 pm • Sun 9 am to 1 pm



**PEOPLE TO PEOPLE STUDENT AMBASSADOR**

Steffan McNeil, a Grade 7 student at the Alton Central School, was recently selected by "People to People" to represent the United States and our President, New Hampshire, and Alton as a student ambassador to Australia. Steffan was chosen for his ability to promote peace among students and adults in other nations.

Shown above with Superintendent Parks (left) and Principal Holden (right), Steffan recently moved to Alton with his parents, Tena and George McNeil, although he has spent summers in Alton Bay his whole life. His parents feel his summer experiences helped shape him into the person he is.

There is a lot of work involved in preparing for this trip in June 2001. He will attend a class at the NH Tech University in Nashua every Saturday starting in January where he will learn about protocol, diplomacy, and some slang that the Australians use in every day life. This will also involve a great deal of homework. He will be asking for suggestions from fellow students, as well as the community, regarding what things he can take along to best represent Alton. He also needs ideas for a fund raiser to help offset the trip cost.



**SO LITTLE TIME**

December is the month that begins the winter season. If one is to enjoy Alton's outdoors, they must deal with the weather. The regular firearms deer hunting season ends December 3, and the archery season ends on the 15th.

If you are out at this time of year, you must stay warm. Dressing in layers with turtle-necks, chamois shirts, long underwear, wool pants, and jacket are my choice for warm and quiet hunting clothing for this month. The deer, likewise, must stay warm this month and will be found near shelter and food. There are LOTS of acorns this year and plenty of beechnuts, too. Find where the deer are feeding on these, and they won't be far away.

Black bear season also ends December 3. They need to feed heavily before they "den up" for the winter. Late season bear will most likely be males, as the females go into hibernation a little earlier than the males. These late season bear will also have a thicker coat, which makes a better bearskin rug. The small game seasons for gray squirrel, pheasant, and ruffed grouse end December 31. With the leaves gone and the deer season over, it's a great time to be in the outdoors, before winter really sets in.

Christmas gifts for the outdoors person that keep one warm are gifts that keep on giving; it doesn't matter what sport it is that you enjoy in the outdoors. Which reminds me, it's time to start getting ready for the ice-fishing season.

So much to do and so little time...  
Have a wonderful Holiday Season.

*Alton Building of Cabinets  
& Furniture Restoration*

Daniel Doherty

- Tile Work
- Quality Cabinets
- Custom Woodworking

No job too big or small!!

For a free estimate call Dan: (603) 875-6488



**ALTON VILLAGE 5 & 10 ACE HARDWARE**  
**(603) 875-5510**

COPIES & FAX SERVICE Available Here ~ Fax 603-875-5525

*Christmas Cards, Candy, Gifts,  
Gift Wrap, Tree-Trimming,  
and Decorating Items  
FRESH BALSAM WREATHS  
AND POINTSETTIAS,  
and S-O-O much more!*

Alton Fire Dept Christmas Trees

Wolfeboro First Night Buttons

*We wish you and yours a very  
Blessed and Peaceful Christmas!*

**SANTA TO VISIT AMERICAN LEGION**

**By Millie Pierce, Unit Secretary**

Once again the American Legion Auxiliary will hold its annual Christmas party which features a visit from that jolly old elf, none other than Santa Claus himself. Everyone should gather at the Legion Hall on Saturday, December 16, at 1 p.m. to greet him. All are welcome to join us in this fun event.

Then on December 23 the Legion family will go caroling around town. Meet us at the hall at 4 p.m. We encourage one and all to join us in singing the songs of the holiday.

A very happy holiday to one and all. Happy New Year!

**"SURVIVING JUNIOR HIGH"**

**By Kitty Croes, ACS Guidance Counselor**

Once again a group of Middle School students from Alton Central School (ACS) attended the Teen Institute's "Surviving Junior High" Youth Conference this past October. Ten ACS students gained personal insight into various areas of concern among youth today and had a "cool" time meeting other New Hampshire students. Workshop topics included active participation and discussion in the areas of alcohol and drug prevention, harassment, peer pressure, diversity, and acceptance of others.

I wish to thank the School Board for sponsoring this worthwhile opportunity for our students. Many of them added new and meaningful insights into dilemmas they face on a day-to-day basis. I give great recognition to Teen Institute for their wisdom, youth-generated energy, and continued focus to help guide our teens toward active participation in leading healthy life-styles.

**ACS's CHALLENGE TEAM ADVANCES**

**By Mark Murphy**

Alton Central School's Granite State Challenge Team won its starting match against Profile High School of Bethlehem and will now advance to the next round. The second face off will see Alton compete against Saint Bani School of Sanbornton.

The first round of competition was videotaped on October 2 and recently aired on Channel 11. Meghan St. Cyr, who is a senior, is the captain of the team. The other students on the team include seniors Renee LaFreniere and Geoffrey Scholl along with junior David Benedetto. The team alternates are Briahna Itchkavich-Levasseur, a senior, and Scot Baumgartner, a sophomore. English teacher Mark Murphy is the advisor to the team.

The questions on the show are broad based covering everything from sports to history and literature. The next round of competition will take place in January. The co-host of the Granite State Challenge Show is John Herman, a 1995 Alton graduate.

**ATTENTION ADVERTISERS!**

Be aware! If you do not turn in "camera ready" copy for your ad, Main Street assumes no responsibility for errors in the final result.

Suggestion: if Main Street's printer is to do the layout on your ad, you might wish to check out the result before the paper is run off and distributed. Call Alton Printing at 875-2197 to make arrangements for an opportunity to proofread. Our staff are volunteers and do not see the ads prior to the paper being printed.

**MAIN STREET CAFE**

RTE. 11, MAIN ST., ALTON 875-4745

**OPEN YEAR ROUND**

SERVING BREAKFAST, LUNCH AND DINNER

**WINTER HOURS OF OPERATION:**

MON.-WED., FRI. & SAT. 6:30 - 2:00 (closed Thursday)

FRI. & SAT. 4:30 - 7:30 (DINNER)

SUNDAY 7:00 - 1:00

**\*\*DAILY LUNCH SPECIALS\*\***

**EARLY BIRD SPECIALS**

**EVERY FRIDAY AND SATURDAY NIGHT**

**4:30 - 6:30 \* STARTING AT \$6.95 \***

**INCLUDING SALAD BAR**

COME TRY OUR NEW LUNCH AND DINNER MENU LOADED WITH NEW MENU ITEMS FOR EVERYONES TASTE BUDS

**\*\*BRING IN THIS AD AND RECEIVE 10% OFF YOUR MEAL\*\***

WE WOULD LIKE TO WISH EVERYONE  
A VERY MERRY CHRISTMAS  
AND HAPPY NEW YEAR  
YOUR HOSTS CHEF TOM AND KAREN JEFFREY

**Alton Circle Grocery**

875-2861

Formerly Wayside Grocery

*Is NOW a Family Member  
of the Stafford Oil Co.*

*We Still Have The Best In*

Chili

Subs

Fried Chicken

Groceries

Ice Cream

Fresh Baked Breads

Pies & Rolls

Pastries

Vegetables

Meats

Live Bait

Fishing Tackle

Auto Supplies

CITGO Gasoline  
and Motor Oil







# Alton Bay Lakeview Market

(603) 875-8888

*Baked Goods Fresh Daily  
Decorated Cakes For All Occasions  
Place Your Christmas Orders Early*

OPEN Daily until 9:00 pm

**LET US ROAST & STUFF  
YOUR TURKEY OR HAM FOR YOU**

*For Pick-up Christmas Day  
Also catering Holiday Parties*

**DESSERT PLATTERS**

**PASTRIES**

**PARTY PLATTERS**

**STOLLENS**

**VEGETABLE TRAYS**



**ROLLS**

**PIES**

**CAKES**

**NUTBREADS**

**CHEESE TRAYS**

**CHRISTMAS COOKIES**

## ALTON GARDEN CLUB

By Betty Locke

It is the end of another gardening year for the Alton Garden Club. The annual meeting and holiday luncheon was held at Shibley's at the Pier. Personal donations for the Mrs. Santa Fund were collected.

The new officers elected were: President, Daryl Czech; Vice President, Phyllis Buchanan; Recording Secretary, Paulette Alden; Corresponding Secretary, Margaret Birdsey; Treasurer, Kay Connolly; Assistant Treasurer, Shirley Copeland; Auditor, Paulette Alden; and Director, Margaret Birdsey.

Committee Chairmen elected were: Program, Barbara Itchkawich and Pat Merrill; Horticulture, Heather Donahue; Beautification, Mary Lou Brown; Good Cheer, Mary Downing and Betty Finethy; Scrapbook, Myra Meier; Yearbook, Margaret Birdsey and Shirley Copeland; Hospitality, Shirley Copeland and Madeline Griffin; Flea Market, Mary Lou Brown and Daryl Czech; Home and Garden Tour, Paulette Alden, Margaret Birdsey, and Shirley Copeland; and Publicity, Ruth Nickerson.

The many gardens and flower barrels in Alton Village and at Alton Bay were planted and maintained by club members. The Sunflower Gardens donated all the flowers for the barrels. The generosity of owner, Bruce Holmes, is much appreciated.

The Garden Club was founded in 1933 with 27 charter members. Today there are 101 members, all of whom are looking forward to gardening in 2001.

**MERRY CHRISTMAS**

## THE CHECKOUT DESK

By Holly Brown  
Librarian



### SANTA TO VISIT THE GILMAN LIBRARY

Santa Claus will be visiting the Gilman Library on December 2 from 6 - 7 p.m. to help us celebrate "Yuletide in Alton, Light Up Night." Children of all ages are welcome. Please use the rear entrance for this event and parents, do not forget to bring your camera!

All are welcome to attend the Friends of the Gilman Library Holiday Tea on December 5. Look for your invitation on page 20. We hope to see you there. If you are able to help with refreshments or clean up, there are sign-up sheets in the library.

If you missed the meeting to discuss improvements to the "Village Area" on October 13 and 14, you might consider checking out our copy of "Alton: Redesigning Main Street." This video is available for circulation now.

Stock up for winter reading. For the week of December 4-9, we will be holding a special on our book-sale books. Fill a plastic bag with books for just \$1 or purchase a canvas book bag for \$5 and fill it free of charge. Don't get caught "snowed in" without a book!

The Friends of the Gilman Library will not be meeting during the winter months. Mark your calendar for their annual meeting on April 10 at 7 p.m. in the library.

The Book Discussion Group will be meeting on December 11 at 6:30 p.m. in the library. The selection for this month is *The Hungry Ocean* by Linda Greenlaw. If you are in need of a copy of this book, please let us know.

## MOUNT MAJOR COMMUNITY CENTER

By Sandy Jackson, President

The Mount Major Community Center (MMCC) operating committee members wish to thank everyone who supported our recent fund raiser raffle. Tickets were on sale this fall for a handmade quilt and a crocheted afghan. Sales concluded at the close of the polls on election day.

Congratulations go to Dawn Wallace, winner of the quilt, and Bonnie Barsanti, winner of the afghan.

All proceeds will go towards our continuing efforts to maintain and improve the MMCC rental facility on Route 11. Please contact Kitty Croes for rental information at 875-7165.

### NEW AT THE GILMAN LIBRARY

#### FICTION

Bohjalian, Chris	Transister Radio
Hamilton, Jane	Disobedience
Herbert, B./Anderson, K.	Dune: House Harkonnen
Hess, Joan	The Conventional Corpse
Kingsolver, Barbara	Prodigal Summer
Michaels, Fern	What You Wish For
Murphy, Shirley R.	Cat to the Dogs: A Joe Grey Mystery
O'Shaughnessy, Perri	Move to Strike
Parker, Robert	Perish Twice
Perry, Anne	Slaves of Obsession
Sandford, John	The Devil's Code
Vine, Barbara	Grasshopper

#### NONFICTION

Barry, Dave	Dave Barry is Not Taking This Sitting Down!
Gray, John, Ph.D.	Practical Miracles for Mars & Venus
King, Stephen	On Writing
Melnyk, Marcia Y.	The Weekend Genealogist
Reagan, Nancy	I Love You, Ronnie

#### CHILDREN

Brown, Marc	Arthur's Perfect Christmas
Dahl, Roald	Skin & Other Stories
Jacques, Brian	Lord Brocktree
Locker, Thomas	Cloud Dance
Ruelle, Karen G.	Snow Valentines
Rylant, Cynthia	The Thanksgiving Beast Feast
Say, Allen	The Case of the Climbing Cat
Steig, William	The Sign Painter
	Wizzil

#### AUDIO CASSETTES

Clancy, Tom	Night Moves
Delinsky, Barbara	The Vineyard

#### VIDEO CASSETTES

Sarah Plain and Tall: Winter's End  
Alton: "Re-Designing Main Street, October 14, 2000"



SEE THE COMPLETE LISTING  
AVAILABLE AT THE LIBRARY

*Now Offering*  
**Complete Air Conditioning Service**  
*N.H. Motorcycle Inspection*

**R B**

**AUTO IMPORTS SERVICE**

---

**AUTO REPAIR-ALL IMPORTS & DOMESTICS, TOO**  
ROUTE 11 HC 73 BOX 532 ALTON BAY, NH 03810

- MAJOR & MINOR WORK
- ENGINE REBUILDING OUR SPECIALTY
- NH STATE INSPECTIONS
- DEPENDABLE SERVICE AT COMPETITIVE RATES

---

Monday - Saturday Over 28 Years Experience  
Call for an Appointment Roger Bergeron, Owner

**603-875-6148**

## McGrath's Food Center

- Friendly & Courteous Service
- Full Service Deli
- USDA Choice Meats
- Fresh produce
- In Store Bakery
- Wine Section
- Beer Section
- Weekly Specials
- Milk Club
- Special Orders welcome
- Veggie Platters
- Cheese/Cracker Platters
- Deli Platters
- All your grocery needs in one stop!

Dear Valued Customers,  
Please bear with us as we go through  
many positive changes in our store to serve  
the community better.

P.O. Box 490 Alton, NH 03809  
875-6104

**Winter Hours:**  
Mon.-Sun. 8 am - 8 pm

Call ahead for sub orders.



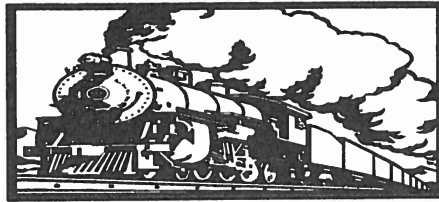
WARM UP YOUR HOME WITH ... K-1 KERO MOBILE BLEND  
**OILS**  
HEATING SYSTEMS INSTALLED  
HOME HEATING OIL

**CARDINAL AND  
GLIDDEN OIL CO. INC.**

CROWLEY ST., FARMINGTON  
MALCOLM GLIDDEN, PRESIDENT CHRISTOPHER GLIDDEN, VICE PRESIDENT  
RICHARD CHRISTOFORE, TREASURER

**DELIVERIES IN ALTON**  
Also in FARMINGTON - UNION - MIDDLETON  
MILTON - SANBORNVILLE - MILTON MILLS  
NEW DURHAM - ROCHESTER  
**24-HOUR BURNER SERVICE**  
FOR OUR CUSTOMERS ONLY  
**755-3562**  
**1-800-640-3562**

# NEW DURHAM RAILWAY STATION



## SERVING LUNCH AND DINNER

7 DAYS EVERY WEEK

ITALIAN AMERICAN SEAFOOD

TRY OUR NEW MENU

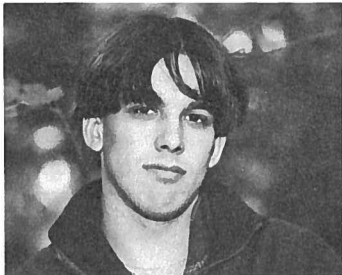
TAKE OUT MENU = 1-603-859-5696

### ENTERTAINMENT SCHEDULE - DECEMBER 2000 (8:30PM-1:00AM)

JONATHAN WEBSTER BAND	DECEMBER 1ST & 2ND
MURALI CORYELL	DECEMBER 8TH & 9TH
DAVE BERRY BAND	DECEMBER 15TH & 16TH
RON JONES BAND	DECEMBER 22ND & 23RD
THE SHIFTERS	DECEMBER 29TH & 30TH

NEW YEARS EVE CELEBRATION WITH DAVE BERRY FEATURING CREG ROY ON HARP. DECEMBER 31ST. TICKETS ON SALE AT LOUNGE SEE PATTI 1-603-859-5696. CALL FOR AVAILABILITY.

COME SEE OUR NEW TAVERN  
FROM ALTON ROTARY 2 MILES SOUTH ON RT 11



### CONGRATULATIONS!

By Renee LaFreniere

Congratulations to Cory Burton (shown above) who was the leading fund raiser for the senior class in their most recent endeavor. He single handedly brought in over \$300 by himself by selling candles and candy. Thank you, Cory.

### AND THE WINNERS ARE . . .

Alton Bay Lakeview Market has announced the names of the four lucky contest winners who each won a 10-speed mountain bike. The drawing was held on November 11. The winners are Curtis Harvey, Darlene Lemay, Jane Varney, and Dave Warnker. The bikes were donated by Steve and Judy McMahon. °

### NEW BUSINESS REWARDED

Diligence does pay off, at least for one Alton resident. Mr. and Mrs. Rick Huppe were honored with a limousine ride to a dinner out after he was chosen sub-contractor of the month by a Gilford firm. Having recently opened his business, Rick is looking forward to meeting and helping people in the area with their water-related needs.



TO PROTECT AND SERVE  
By Detective Glenna Heath  
Alton Police Department

### BETTER SAFE THAN SORRY

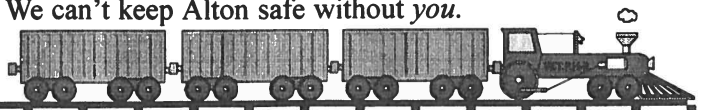
One sunny weekday afternoon in October we received a call from a concerned neighbor who lives on Main Street. She told the dispatcher that she had just seen a suspicious man looking into the windows of the neighboring home.

When officers arrived they found a man near the house who said that he had been out looking for his dog. There was no sign of a loose dog and the man hadn't asked any of the residents about the missing dog. One of the officers checked around the house he was near and found a side door that was broken into. After speaking with the man further the officers arrested him and charged him with attempted burglary.

Thanks to a concerned neighbor who was paying attention a burglary attempt was foiled — right in downtown Alton and in broad daylight!

Your police department would like everyone in Alton to take the time to be aware of his or her surroundings and keep an eye out for strangers in their neighborhoods. Call us to report anyone or anything that appears to you to be out of the ordinary. It is our job to check out suspicious situations.

We can all keep an eye out for one another by taking part in an informal "neighborhood watch" program. Remember the saying that "it is better to be safe than sorry." We can't keep Alton safe without you.





### CUB SCOUT BAKE SALE A SUCCESS

Cub Scout Pack 53, Den 3, held a bake sale on November 4 at the Bank of New Hampshire on Main Street. A large assortment of cookies, pastries, pies, and cakes were on sale, with all profits going to the troop to help fund their activities. Scouts Aaron Wilkin and Zachary Whissel were on hand to run the bake-sale assisted by Den Leaders Renee Wilkin and Michelle Whissel.

Profits from the troop's fund raising events are used to support the pack, as no dues are collected according to Renee Wilkin. They are needed to cover the cost of craft supplies and materials, as well as a planned field trip to the Hayden Planetarium and other den activities. Donations to the den would also be greatly appreciated.

### PROFESSOR "GRAN" MOLLY CONNELLY

Mrs. Monasky and her Married and Single Life class at Alton Central School would like to thank GranMolly for coming to talk to the class about pregnancy, parenthood, and the marriage relationship. We thank you for your time and welcome you back anytime.



### HIGHWAY HAPPENINGS

by Ken Roberts  
Highway Agent

### WINTER IS APPROACHING

Hunting season is here! Please remember to wear bright colors, such as red or orange, when you are walking through the woods. Also, wear fluorescent colors while walking at night and carry a flashlight.

All excavation work is done for the year. The road projects of Frohock Brook, Lily Pond, Mirimichie, Davis, Rines, Bartlett, Fort Point, and Sunset Shore Drive are all completed. We are now preparing for the coming winter. We are cold patching shoulders and pot holes within the town roads. We are sorry for the inconvenience.

Just a reminder during snow storms — please give the trucks plenty of room while they are plowing and sanding to ensure safety for all drivers, them and yourself.

There is a correction from last month's "Highway Happenings." The truck driver we hired is a replacement driver, not a new hire. Sorry for the error.

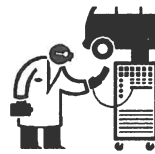
Please do not hesitate to call the Highway Department (875-6808) should you see any problems we have overlooked.

Remember, Public Safety Is Our Number One Concern!

### NEW 6-MONTH SUBSCRIPTIONS AVAILABLE

Due to popular demand, anyone who wishes to take out a subscription to Main Street for any six-month period they are living elsewhere may now do so. The cost will be \$6. Send your check or money order, payable to Voice of Alton, to P. O. Box 210, Alton Bay, New Hampshire 03810. Please indicate the months you wish the paper mailed to you.

**TIRE  
WAREHOUSE**  
875-TIRE(8473)



**ALTON AUTO  
CENTER**  
875-AUTO (2886)

Rt. 28 South, Alton, NH



GET YOUR  
SNOW TIRES AND/  
OR RIMS Now!!!

NO APPOINTMENTS  
NEEDED!!!!

General Repairs  
Maintenance  
Wheel Alignments  
State Inspections  
Emergency Road  
Service

OUR BEST WISHES FOR A SAFE AND HAPPY  
HOLIDAY SEASON!!!!!!

You can depend on us....



Because we depend on you!

**FOR THE FUN OF IT**  
 By Kellie M. Troendle  
 Recreation Director



**HOLIDAY HAPPENINGS**

**Blue's Clues Party, December 5**

Ages 3 - 5, 9 - 10:30 a.m. at the Alton Bay Community Center, \$2. Join in the fun and come find Blue's Clues. Theme activities include hunt for Blue's Clues with your own notebook, cooperative games, Blue's Clues snack, and more. Registration is limited. Sign up by December 1.



**Happy Holiday Party, December 12**

Ages 3 - 5, 9 - 10:30 a.m. at the Alton Bay Community Center, \$2. This holiday party is sure to be a hit. We will make a gingerbread house and memorable holiday ornament to take home. We will also have a cookie swap — bring cookies to share and go home with cookies for your family. Registration is limited. Sign up by December 5.

**Recreation Soccer League**

The Alton Parks and Recreation Department would like to thank all of the soccer coaches for volunteering their time and energy for the soccer program. Over 110 children participated in this growing program, and the soccer league would not be possible without the volunteer coaches. A very special thank you to: Lisa Jones, Steve Beranger, Doug Rojek, Dianna Rojek, Peter Bolster, Carla Yelle, Jim LaFreniere, Dorene Pelton, Peter Clifford, Rick Sykes, Jim Shelton, Gary Davis, Rick Henderson, Theresa Harris, Tre Harris, Lynne Brunelle, Dale Brunelle, Rick Macduff, Claude Rochette, Alan Barrett, Kendra Kantar, Jeff Kantar and Michael Bemis. Thank you also to all of the parents and players for a great season. See you next year.



**Happy Holiday Bingo, December 7**

The Parks and Recreation Department is sponsoring a free Bingo for seniors 55 and over at the Pearson Road Community Center on Thursday, December 7, from 1 - 3 p.m. Call "Bingo" and win a holiday prize; refreshments will be served.



**Country Line Dancing Lessons**

Lessons will not be held in December due to the holidays, but will resume in January. For information call 875-0109.

**LOCAL TEACHERS LEARN ABOUT THE LAW**

By Mary Christy

"Law related education for the common good" was the focus of the 18th Annual Fall Conference of the New Hampshire Bar Association attended by three staff members from Alton Central School (ACS). Laura Dwyer, enrichment coordinator, and Elinor Thorsell and Mary Christy from the English Department were joined by Steve Sacks, NEA attorney and an ACS volunteer, for the conference held in Manchester.

The conference focused on how laws impact on education, student rights, locker searches, jury duty, first amendment rights, student dues, and other matters common to schools. Case studies were evaluated and discussed. Information was distributed on model lessons for good citizens, as well as materials for this year's mock trial (Alex Strusa v. New Concord School District: A case of defamation and breach of contract). Alton will have two teams participating in the mock trial.

**Over 300 Cars,  
 Trucks, Vans and  
 Sport Utilities In  
 Stock! See our  
 selection on Route  
 28 in Wolfeboro or  
 www.millerauto.com.**

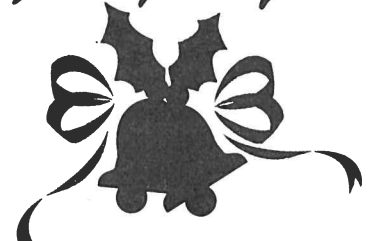


*People & Cars You Can Trust!*



**The MILLER AUTO DEALERSHIPS**

*From The Miller  
 Family To Yours*



*Merry Christmas  
 and  
 Happy New Year*

If you would like an advertisement for your organization's upcoming event in this space contact Sharon Severy at The Miller Auto Dealerships. 603-569-1068



**CLASSIFIED ADS**

Alton residents may place classified ads in any issue of Main Street. As a public service ads are primarily for *noncommercial* private individuals who have items for sale (except real estate for sale or rent), items or services wanted, free items, personals, or help wanted notices. The rate is \$1 for each noncommercial ad of 35 words or less. Each additional 35 words costs \$1. (There is no charge for "Cards of Thanks" or ads under the "Free" and "Ride Sharing" classifications.) The rate for commercial ads is \$12.50 per column inch. Main Street reserves the right to refuse any ad, or edit it for length/style. Ads must be submitted with payment to Post Office Box 210, Alton Bay 03810, by the 15th of the month preceding publication. Submissions may also be placed in the Main Street box at the Alton branch of the Bank of New Hampshire. Ads **must** contain a phone number.

**FOR SALE**

NEON SIGN MAKING EQUIPMENT, accessories included, \$3,000 or BO; Underwood Typewriter, 1930's, fair condition, \$300 or BO; 4 Mud Flaps, Shanno, for dump truck, \$10; Fireplace Wood Stove insert, Country Comfort, \$200. 875-6586 evenings after 5.

CAST IRON WOOD BOX STOVE, \$100; 10" Cast Iron Sears Table Saw, \$150; 2 Studded Tires, P205 75R15, used only one season, \$80. 875-3281.

DP AIR STRIDER BIKE, combines step/bike/ski, new \$235, asking \$50. 776-7931.

**WANTED**

HOUSE CLEANING help for retired couple in Alton Bay, new modern, orderly house of 3,000 sq. ft., no pets, twice or once monthly, looking for experienced, diligent person. 875-5544.

LOOKING FOR NEW families/individuals to join my natural food buying group; you can eat better, learn a lot, and save; call Katrina evenings. 875-4063.

COMPUTERS, SCANNERS, PRINTERS, software, hardware, monitors, etc.; computers must be 5 years or under of age; I will take any brand of computer; ask for Jesse. 875-4063.

**LOST**

CAMO HUNTING BACKPACK, missing October 29, Davis Road, Alton; finder, please call, thanks. 364-5828.

**HELP WANTED****WE'RE GROWING AGAIN!!!****Full Time Machinist Position****for Set Up and Operating a CNC Lathe****Inquire Within Hillsgrove Machine, Inc.****Dudley Road, Alton, or call 776-5090, ask for Norm****ALTON MOM TO PROVIDE****DAYCARE IN HER HOME****FULL TIME/BEFORE****AND/OR AFTER SCHOOL.****Call Kerri at 859-0045 for Details.****1 BEDROOM APARTMENT****ALTON BAY ON RAND COVE****Three-season porch with a sundeck.****\$460 a month, plus utilities.****Call (603) 875-8688 or (978) 343-4128.****STUDENTS THANK THE WATSONS**

How can we thank you for giving us the opportunity to "soar?"

Because of your interest in our education and your love of flying, we were given the chance to not only fly over the Winnepesaukee area, but also to actually pilot a plane as well.

It was an "awesome" experience! We hope that we will be able to continue our "hands on" education with this Young Eagles Flight Program.

Thank you both so much, and please, say hi to Dakota.

Meghan, Renee, Amanda, Zach, and Jason, students of Alton Central School.

**CARDS OF THANKS**

The family of Joe Hillsgrove would like to thank all family and friends for all of your support, cards, phone calls, and gifts that he received during his recovery from his car accident. Thank you.

/s/ Lee, Brenda, Joe, Travis, and Ferbie

Thank you to the people who gave money for UNICEF when I was trick or treating this Halloween.

/s/ Erin Brackley

**SPAGHETTI SUPPER A SUCCESS!****By Renee LaFreniere, Class President**

On behalf of the senior class of 2001 I would like to thank all of the residents and volunteers who came and supported our class at the spaghetti supper held on November 7. Over \$1,000 was raised by the end of the night. We couldn't have done it without you!

**SENIOR MEALS**

Program is open to all age 60 and older (875-7102). Meals served Monday-Friday, 12 noon. Suggested \$2 donation.

Nov. 27 - Dec. 1: Mon., Herb Baked Chicken; Tue., Veal Parmesean; Wed., Hearty Beef Stew; Thu., Stuffed Pork Choppette; Fri., Seafood Newburg.

Dec. 4 - 8: Mon., Spaghetti/Meatballs; Tue., Baked Chicken; Wed., Pot Roast; Thu., Ham; Fri., Cheese Omelet.

Dec. 11 - 15: Mon., Chicken Filet; Tue., Stuffed Veal Roulard; Wed., Italian Sweet Sausage/Sauce; Thu., Meat Loaf; Fri., Macaroni & Cheese.

Dec. 18 - 22: Mon., BBQ Riblets; Tue., Chicken Cacciatore; Wed., Kielbasa; Thu., Cod Fish Cakes; Fri., Baked Stuffed Chicken.

Dec. 25 - 29: Mon., Christmas (closed); Tue., Salisbury Steak; Wed., Turkey Ala King; Thu., Shepherds Pie; Fri., Roast Pork.

**IN Main Street****FIFTEEN YEARS AGO . . .**

. . . Announcement was made of the new (January 1, 1986) plan to have simple, low-cost, classified ads in Main Street . . . School Board Chairman David J. McKenney announced that three committees (Buildings and Grounds, Current and Projected Use Analysis, and Educational Programs) are at work to recommend solutions to the overcrowded conditions in the school . . . Luanne Dadura reported that "learn to ski" programs at Gunstock are now available for Alton students . . . as reported by Marion and Leo Macdonald the Alton Volunteer Ambulance Corps had just put a new vehicle into service.

**TEN YEARS AGO . . .**

. . . A new 60' x 140' skating rink opened behind the Alton Central Fire Station on Route 140 . . . Alton Boy Scouts collected over 300 bags of food as part of the "Scouting for Food" program sponsored by the Boy Scouts of America nationally . . . Alton was recognized by the NH Resource Recovery Program for its model and outstanding recycling program . . . Winona Houle was elected president of the Alton Garden Club at its annual meeting.

**FIVE YEARS AGO . . .**

. . . Construction for Alton's new (and current) post office was nearing completion . . . the Alton Middle School's soccer team finished the season undefeated with 14 wins, no losses and 2 ties . . . two members of the Alton Central School's Concert Choir, Laura Levesque and Thaisae Whitehouse, won slots in the All New England Choral Festival at Plymouth State College . . . Alton Central School was named a Blue Ribbon School for the 11th time in the last 14 years by the NH Partners in Education.

*You are cordially invited to the second annual*

*Friends of the Gilman Library  
HOLIDAY TEA*

*Tuesday, December 5, 2 - 4 p.m.,*

*at the Gilman Library, Main Street, Alton.*

*There will be refreshments for all ages,*

*holiday music for everyone to enjoy,*

*and a special visitor from the workshop of  
Mr. S. Claus.*

*Come help us celebrate the holiday season.*



**MIDDLE SCHOOL SOCCER WINNERS!**

For the second time in three years, the Middle School Boys Soccer Team has accomplished two awesome "goals." The first was by being undefeated for the season (14 - 0) and the second was winning the Suncook Valley Championship on October 21, defeating Pittsfield 2 - 1. Taylor Peterson and Jimmy Grant each scored on headers, assisted by Morgan Locke. Over the three years they have a record of 42 - 2.

There were six teams involved and Alton took the trophy home. Another accomplishment was the announcement of the Championship MVP, chosen from the field of six teams. Our own Morgan Locke was the surprised recipient. The boys have been superbly coached by Matt Locke for the fourth year. He has consistently earned their respect with his knowledge and devotion.

The team consists of these students: Grade 8: Scott Goyette, Travis Hillsgrove, Grant Holway, Travis Hopper, Morgan Locke, Brandon Pellowe, Mike Tidd; Grade 7: Josh Casoni, Ryan Fogell, Chris Frost, Jimmy Grant, Luke LaFreniere, Owen Laurion, Taylor Peterson; Grade 6: Nate Fogell.

**SPINNING**

**Bicycling Conditioning**

**AEROBICS**

Morning and Evening Classes

Denise Merritt, M.D.



10 classes/ \$50 (requires preregistration for each spinning class)  
\$200/ 6 months (guarantees a bike or aerobics class two times/week)

call 875-5577

*My Little Sewing Room*

**875-5329**  
**For Appointment**

*Brenda MacKay, Master Seamstress*  
**30 years experience**



**Main Street**

PO Box 210, Alton Bay, New Hampshire 03810

PRSR STD  
U.S. Postage  
PAID  
Permit No.2  
Alton Bay, NH

**CAR-RT SORT  
POSTAL CUSTOMER**