

Main Street

VOL. II, NO. 1

JANUARY 1986

ALTON, N.H.

FILING FOR TOWN OFFICIALS BEGINS JAN. 27

VOTING AND TOWN MEETING SET FOR MARCH 11

The annual Town Meeting and local elections will take place Tuesday, March 11, according to Town Clerk Gwendolyn M. Jones. Voting on warrant articles is scheduled for the following evening, March 12.

Election of school officials takes place at the same time and filing for all school and town officials is done at the office of the Town Clerk beginning January 27 and ending 5 p.m. on February 10.

There are 18 town positions that will be on the ballot this year. They are

- 1 Selectman for 1 year
- 1 Selectman for 3 years
- 1 Trustee of Trust Funds for 3 years
- 1 Trustee of the Library for 3 years
- 1 Fire Ward for 3 years
- 1 Supervisor of the Checklist for 6 years
- 1 Water Commissioner for 1 year
- 1 Water Commissioner for 3 years
- 1 Auditor for 2 years
- 1 Highway Agent for 2 years
- 3 Budget Committee Members for 3 years
- 2 Planning Board Members for 1 year
- 2 Planning Board Members for 3 years
- 1 Moderator for 2 years

Voters also will be asked to select two School Board members for 3 year terms.

Residents who have not yet registered to vote will have an opportunity to do so on March 1 when the Supervisors of the Checklist will be in session at the Town Hall. Absentee ballots are available by mail or in person from the Town Clerk's Office. Ballots must be mailed to the voter or delivered in person. Ballots may not be given to anyone other than the voter. Completed ballots must be received no later than 5 p.m. the day before the election.

The members of many committees and com-

missions are appointed and anyone interested in serving their community is urged to notify the selectmen or Marion MacDonald, Town Moderator.

ALTON RESIDENTS AWAIT CABLE TV INSTALLATION

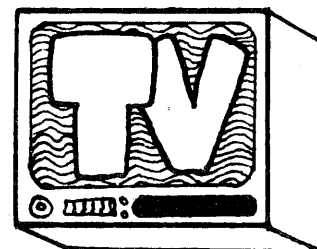
After four years of negotiations with cable companies, utility companies, sealed bids, renegotiations, wiring and rewiring of utility poles, some residents of Alton are expected to be able to receive cable television beginning this month.

The basic program package includes New Hampshire channels 9, 11 and 21; Maine channels 6, 8 and 13; and channels 4, 5, 7, 38 and 56 from Boston. The monthly charge is expected to be less than \$10.

Speciality channels such as MTV, Nashville, Arts, Home Box Office, Cinemax, Cable News Network, and Nickelodian will be included with the basic package in an introductory package for \$29.95. A discount on installation and a free remote converter are included in this special offer.

ESPN, the sports channel, and two other channels will be available for additional monthly charges. A second TV hook-up or FM radio hook-up will be available for an estimated \$2 per month. Arrangements for a public access channel are incomplete.

Jill Stein, Chairperson of the Town's Cable TV Committee, acknowledged the work of past and present committee members Linda Mazalewski, Richard Downing, Herbert Persan, Robert Sederquist Jr., Harvey Sanders, Elaine McDonald, and Charles Adams.



THE CHECKOUT DESK
by Pat Merrill, Librarian

AGNES THOMPSON ROOM IS AVAILABLE FOR MEETINGS

The Gilman Library Trustees would like to remind the community that the Library welcomes the use of its meeting facilities, the Agnes Thompson Room, for social, educational and cultural activities. The facilities are available on equal terms to all groups in the community provided that the meetings be open to the public and conform with the following rules:

1. Library programs shall have priority.
2. The meeting facilities shall be available for occasional rather than continuous use by one group.
3. Reservations must be cleared by the librarian and trustees at least two weeks in advance. The following information shall be provided:
 - a. Name and phone number of person requesting the room
 - b. Name of organization
 - c. Approximate number of persons attending (limit 35-40)
 - d. Date, time, and length of meeting
4. The Library facilities shall not be available for profit making activities or religious groups. Fees and admissions cannot be charges.
5. The Board of Trustees reserves the right to establish a nominal fee for the use of the meeting facilities to cover maintenance.
6. Smoking is not allowed in the Library.
7. Coffee and light refreshments may be served by the group, and members are responsible for clean-up afterward.

NEW BOOKS

Recent additions to the Library include: Fete Fatale by Robert Barnard, The Bachman Books by Stephen King, Secrets by Danielle Steel, The Burning Shore by Wilbur Smith, Night Ferry To Death by Patricia Moyes, and Death at Charity's Point by William Tapply.

For elementary school children, a "Growing-Up" series has been added to the collection. This is a series of fiction books featuring subjects which include weight control, remarriage, friendship, divorce, hearing disorders, selfishness, death, alcoholism, vandalism, and mentally handicapped.

HISTORY HIGHLIGHTS

by Al Fisher

In 1830, Alton was the 19th largest populated town or city in New Hampshire.



CLASSIFIED ADS MAY BE PLACED IN MAIN STREET

Alton residents may place classified ads in Main Street each month. Ads are limited to non-commercial, private individuals who have items for sale, items wanted, or free items. The cost is \$1 for two lines of copy per month.

Space for classified ads will be limited and available on a first-come, first-served basis. Main Street reserves the right to refuse any ad.

Ads may be mailed with payment to P. O. Box 210, Alton Bay, 03810, or submitted at the Busy Corner Store in Alton Bay. The deadline is the 15th of the month.

MAIN STREET

Published monthly by Voice of Alton, Inc., a non-profit organization

Editor - John Duffek
Assistant Editor - Catherine Calvert
Reporters - Susan Dancoes, Linda Hanley, Gahan Lavalley,
Alice Quinn

Business Manager - David McKenney
Advertising Manager - William Watkins
Circulation Manager - Christine Consentino
Printing - Alton Printing Company

P. O. Box 210, Alton Bay, NH 03810
Phone - 875-3070

Subscriptions are available to receive Main Street by first class mail at \$5 for 12 issues

Curry
REALTORS



(603) 875-6000

route 11 box 336 • ALTON BAY NEW HAMPSHIRE 03810

you've seen our SOLD signs,
call us to list your property

ABITRONICS
JOHN P. DALEY

The Fone Shoppe
Abigail N. Daley

Busy Corner, Alton Bay, N.H. 03810

Phone: 803-859-7800
803-875-7190

GENERAL ELECTRIC
Authorized Sales & Service
MOBILE RADIO
Audio-Video Equipment

ALTON BAY
BUSY CORNER STORE
for
Tri-State Megabucks

Route 11

875-3070

JANUARY EVENTS

- Wed. 1 - NEW YEAR'S DAY - Town Offices and Landfill Closed
- Thurs. 2 - SCHOOL REOPENS
SENIOR CITIZEN BUS SERVICE - Call 875-7102
- Sun. 5 - OPEN HOUSE - Sponsored by the Alton Fire Department, 8:30 a.m. to Noon, Central Fire Station, Wood Stove and Chimney Information Available
- Mon. 6 - STORY HOUR: 3 to 5 Year Olds - Sponsored by the Gilman Library, 1 to 2 p.m., Gilman Library
ALTON DAM DEVELOPMENT MEETING with Southern N.H. Hydroelectric Power, 7 p.m., Town Hall
PLANNING BOARD MEETING - 7:30 p.m., Town Hall
- Tues. 7 - SELECTMEN'S MEETING - 7 p.m., Town Hall
- Wed. 8 - STORY HOUR: 3 to 5 Year Olds - Sponsored by the Gilman Library, 1 to 2 p.m., Gilman Library
BINGO - Sponsored by the American Legion Auxiliary, 6:30 p.m., American Legion Hall
- Thurs. 9 - SENIOR CITIZEN BUS SERVICE - Call 875-7102
- Fri. 10 - CHILDREN'S MOVIES: "Three Little Pigs" - Sponsored by the Gilman Library, 3 p.m., Gilman Library (51 min.)
GIRLS VARSITY BASKETBALL - Alton vs. Henniker, 6:30 p.m., Away
BOYS VARSITY BASKETBALL - Alton vs. Henniker, 8 p.m., Away
- Mon. 13 - STORY HOUR: 3 to 5 Year Olds - Sponsored by the Gilman Library, 1 to 2 p.m., Gilman Library
PLANNING BOARD MEETING - 7:30 p.m., Town Hall
- Tues. 14 - GIRLS VARSITY BASKETBALL - Alton vs. Concord Christian, 6:30 p.m., Home
SELECTMEN'S MEETING - 7 p.m., Town Hall
BOYS VARSITY BASKETBALL - Alton vs. Concord Christian, 8 p.m., Home
- Wed. 15 - STORY HOUR: 3 to 5 Year Olds - Sponsored by the Gilman Library, 1 to 2 p.m., Gilman Library
BINGO - Sponsored by the American Legion, 6:30 p.m., American Legion Hall
- Thurs. 16 - SENIOR CITIZEN BUS SERVICE - Call 875-7102
GIRLS VARSITY BASKETBALL - Alton vs. Ashland, 5:30 p.m., Home
BOYS VARSITY BASKETBALL - Alton vs. Ashland, 7 p.m., Home
- Fri. 17 - CHILDREN'S MOVIES: "He Man" - Sponsored by the Gilman Library, 3 p.m., Gilman Library, (45 min.)
GIRLS VARSITY BASKETBALL - Alton vs. Derryfield, 6:30 p.m., Away
BOYS VARSITY BASKETBALL - Alton vs. Derryfield, 8 p.m., Away
- Mon. 20 - MARTIN LUTHER KING, JR. HOLIDAY
STORY HOUR: 3 to 5 Year Olds - Sponsored by the Gilman Library, 1 to 2 p.m., Gilman Library
OLD HOME WEEK COMMITTEE MEETING - 7 p.m., American Legion Hall, All Organizations are urged to send a representative and interested individuals are welcome
PLANNING BOARD MEETING - 7:30 p.m., Town Hall
- Tues. 21 - GIRLS VARSITY BASKETBALL - Alton vs. Henniker, 6:30 p.m., Home
SELECTMEN'S MEETING - 7 p.m., Town Hall
BOYS VARSITY BASKETBALL - Alton vs. Henniker, 8 p.m., Home
- Wed. 22 - STORY HOUR: 3 to 5 Year Olds - Sponsored by the Gilman Library, 1 to 2 p.m., Gilman Library
GIRLS VARSITY BASKETBALL - Alton vs. Linwood, 5:30 p.m., Home
BOYS VARSITY BASKETBALL - Alton vs. Linwood, 7 p.m., Home
- Thurs. 23 - SENIOR CITIZEN BUS SERVICE - Call 875-7102
- Fri. 24 - CHILDREN'S MOVIES: "Wind in the Willows" - Sponsored by the Gilman Library, 3 p.m., Gilman Library (78 min.)
GIRLS VARSITY BASKETBALL - Alton vs. Weare, 6 p.m., Home
BOYS VARSITY BASKETBALL - Alton vs. Weare, 7:30 p.m., Home
- Mon. 27 - FIRST DAY for Candidates to File for Office with the Town Clerk
STORY HOUR: 3 to 5 Year Olds - Sponsored by the Gilman Library, 1 to 2 p.m., Gilman Library
PLANNING BOARD - 7:30 p.m., Town Hall
- Tues. 28 - GIRLS VARSITY BASKETBALL - Alton vs. Moultonboro, 6:30 p.m., Away
BOYS VARSITY BASKETBALL - Alton vs. Moultonboro, 8 p.m., Away
- Wed. 29 - STORY HOUR: 3 to 5 Year Olds - Sponsored by the Gilman Library, 1 to 2 p.m., Gilman Library
- Thurs. 30 - SENIOR CITIZEN BUS SERVICE - Call 875-7102

Continued on Page 5



Main Street
Alton, N.H.
875-7333

ALTON HOUSE OF PIZZA

Pizzas-Grinders-Spaghetti Dinners and Salads
Orders to Go

LAKE & STREAM Realty

LAKESHORE & RESIDENTIAL

FERNHILL, BOX 198, ALTON, NEW HAMPSHIRE 03860
RESIDENCE

603-776-3100
603-875-2791

Tel. 875-3241

m-s - 8:00-5:30

J. JONES & SON
True Value Hardware

Main Street
Alton, N.H.

Leon T. & Ethel H. Dodge, Prop.

FORESTRY CONSULTANT TO AID TOWN AND RESIDENTS

Alton has contracted with Charles Moreno to fulfill the responsibilities of Town Forester. According to Jack Henderson, Town Administrator, Moreno is retained on a consulting basis and his fee to the Town is determined by each type of service rendered.

Services that Moreno is capable of as a forester include the review of all applications to cut timber, including a field check of the actual cut. If a landowner applies to cut a certain amount of timber, he must pay a specific amount of taxes according to the tax base. Moreno can review the application, do an on-site check to see if the stated amount of timber that was taxed coincides with the amount of timber actually cut.

Another function of the forester is the review of current use applications which relates to tax relief for managed forest land.

Moreno will serve as an advisor for future timber tax rates and for the use and management of town owned forest lands.

He holds a bachelors degree in Forestry from the University of New Hampshire and is Vice-Chairman of the New Hampshire Chapter of the Tree Farm Program.

Moreno is available to individuals as a consultant on tree-cutting, land area site surveys, and land management. Additional information and fees may be obtained from Moreno at P. O. Box 766 in Alton or by calling 868-5728 in Durham.

SCHOOL CLOSINGS

In the event of bad weather, closing of the Alton School is announced on WASR in Wolfeboro (AM 1420), WLNH in Laconia (FM 98.3), and WWNH in Rochester (AM 93).

HISTORY HIGHLIGHTS

by Al Fisher

"I went to - East Alton - from Alton Village. The worst traveling I have ever seen. The roads were completely filled with snow even with fences. All the way..no path is visible, the drifts are 10 feet deep. How people can live in the northern part of this town and travel about in the winter is more than I can tell." March 28, 1854. J. Mooney's Diary.



LIONESS CLUB CELEBRATES ITS FIRST ANNIVERSARY

January 14 is the first anniversary of the Alton Lioness Club, according to Club President Jean Irving. The occasion will be noted at the January 8 meeting that will feature the Lioness District President as a guest speaker.

In its first year, the Club has focused its efforts towards the needs of the elderly.

Any women interested in more information regarding membership should call Jean Irving at 875-2791.

HISTORY HIGHLIGHTS

by Al Fisher

December 26, 1774. "Today was Christmas. We had fine frolick at Mr. Marsh's. (Foxy Johnny's)..Drank six quarts of rum." E. Roberts.

CLASSIFIEDS

FOR SALE

WOOD COOK STOVE, 1895 Crawford Grand, Best Offer, 875-2157

METAL BED FRAME, Casters, Single Bed Size, \$10, 875-3070

WOODSTOVE with Water Jacket to Connect to Heating System, \$300, 875-2597

WOOD FURNACE for Hot Water Heating System, Hardly Used, \$1200, 875-3070

WANTED

DOG HOUSE for a Medium/Large Sized Dog, Call Linda after 4 p.m. at 859-6370

FREE

COLOR TV, Console Model, Needs Repair, 875-7534 after 6 p.m.

Residential- Commercial
Container Service
for all your Refuse Needs
Serving Alton
and
Surrounding Communities
(603) 875-2711



RUSS SAMPLE, JR.
Owner - Operator

Rand Hill Rd.
Box 281
Alton Bay, N.H. 03810



Sheila Griggs-Ryan
Proprietor

ALTON FLORIST
MAIN ST.
ALTON, N.H.

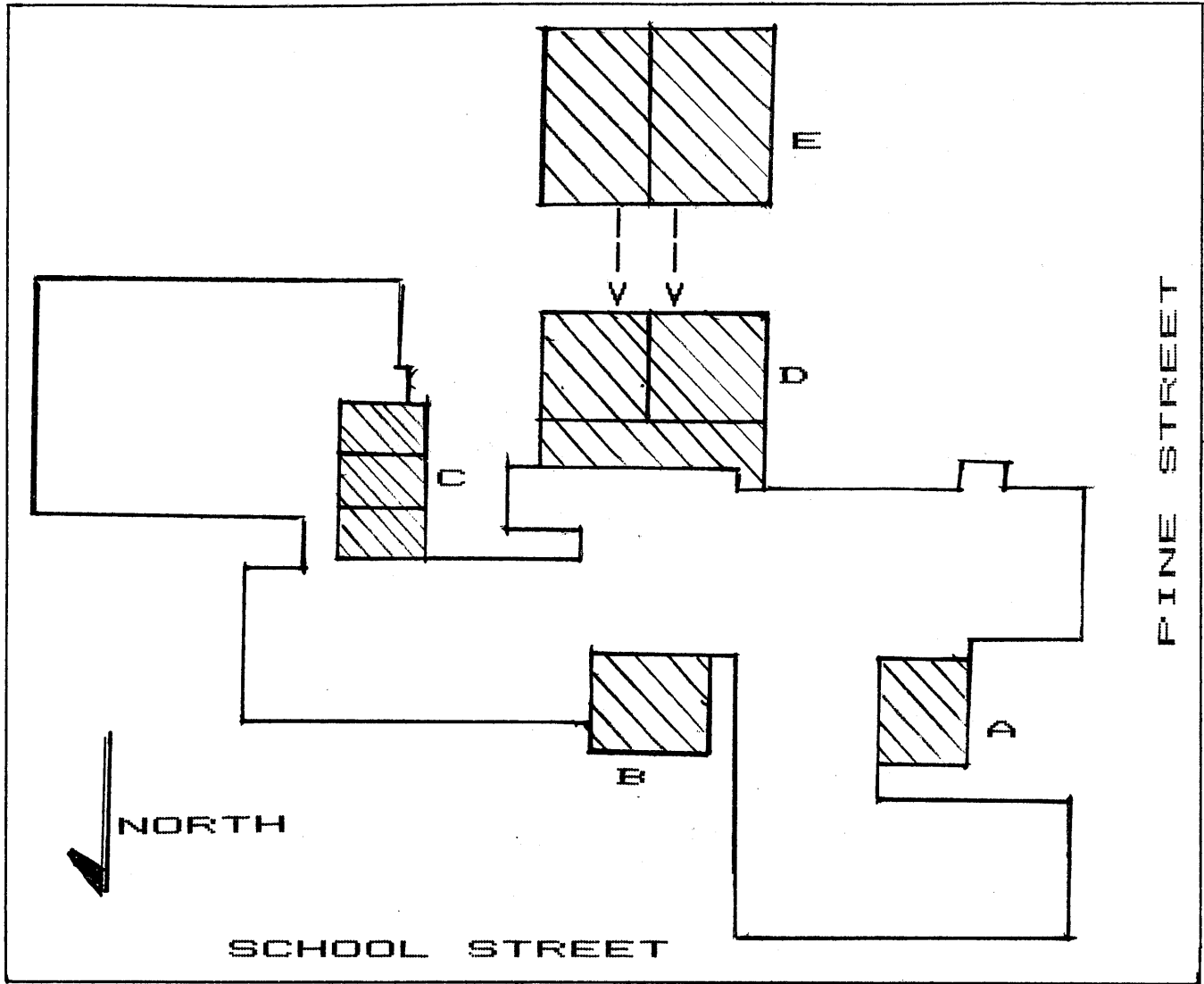
(603) 875-7444

BRUCE K. JOHNSON
Attorney at Law

(603) 875-6131

Main Street
P. O. Box 817
Alton, N. H. 03809

ALTON SCHOOL BOARD ACCEPTS BUILDING PLAN



At a recent meeting the Alton School Board voted unanimously to accept the recommendations of the School Facility Study Committee. Among the measures proposed is the construction of five additions to the present facility specifically designed to meet 90 % of the problems cited. The location and function of each proposed addition are shown above (shaded areas) with the layout of the present school complex.

- A - Science Laboratory
- B - Office
- C - Kindergarten, Reading Title I, Special Education Enrichment
- D - Art and Music
- E - Locker Rooms (Beneath D)

Continued from Page 3

- Fri. 31 - CHILDREN'S MOVIES: "Scruffy" - Sponsored by the Gilman Library, 3 p.m., Gilman Library, (78 min.)
- GIRLS VARSITY BASKETBALL - Alton vs. Linwood, 5:30 p.m., Away
- ALL CLUBS NIGHT DINNER - Sponsored by the Alton-New Durham Lions Club, 6 p.m., American Legion Hall
- BOYS VARSITY BASKETBALL - Alton vs. Linwood, 7 p.m., Away

<p>TEL-875-5010</p> <p style="text-align: center;">ALTON VILLAGE STORE</p> <ul style="list-style-type: none"> • Market • Cold Cases • Pastries <p style="text-align: center;">Open 7 - 10 Fri. & Sat. 7 - 11</p>	<p style="text-align: center;">Barrett's VILLAGES 5 & 10 V & S Variety</p> <p style="text-align: center;">MAIN ST., ALTON, N.H. (Across From The Post Office)</p> <p style="text-align: center;"><i>We Carry A Little Bit of Everything</i> Toys, Yarns, Craft Supplies, Stationary Supplies, Greeting Cards, Gift Wrap, Party Goods.</p> <p style="text-align: center;">Open Year Round (803) 875-5510</p>	<p style="text-align: center;">EAST ALTON GENERAL STORE</p> <p style="text-align: center;">JCT. 28 & 28A ALTON, N.H. 03808 (603) 875-3113</p> <p style="text-align: center;">Groceries - Cold Beverages - Hot Coffee Sandwiches - U-Haul Rentals N.H. Fish & Game Licenses Tackle - Propane Filling Station - Sweeps Tickets - Ice</p> <p style="text-align: center;">Open 7 Days</p>
--	--	--

SCHEDULES**CHURCHES:**

Advent Christian Church - Sunday, 11a.m. & 6p.m., Reverend Jeffrey P. Hoy
 Baha'i Fireside - Wednesday, 8p.m., Gustafson Residence, 293-7865
 Community Church - Sunday, 11a.m., Congregational Meeting House, Reverend Dwight V. Meader
 Hosanna New Testament Fellowship - Sunday, 9:45a.m., American Legion Hall, Pastor Gene V. Beaudry
 St. Joan of Arc - Saturday, 5p.m., Sunday, 8 & 11a.m., Msgr. Leo Hines

GILMAN LIBRARY:

Monday & Wednesday, 2 - 8p.m.
 Friday, 9a.m. - 5p.m.
 Saturday, 9a.m. - 1p.m.

TOWN HALL: 8:30a.m. - 4:30p.m.

Selectmen's Office
 Town Administrator
 Town Clerk
 Tax Collector
 Welfare Officer - Call 875-2000
 Planning Board - 10a.m. - Noon, Wednesday

LANDFILL:

Saturday & Sunday, 7:30a.m. - 3p.m.
 Mon., Thurs., Fri., 8a.m. - 3:30p.m.
 Closed Tuesday, Wednesday, & Holidays

ORGANIZATIONS:

AMERICAN LEGION - 2nd Monday, 7p.m., American Legion Hall, 875-3461
 AMERICAN LEGION AUXILIARY - 2nd Monday, 7p.m., American Legion Hall, Frances Cassidy, 859-4741
 BOY SCOUT TROUP 53 - Tuesday, 7p.m., American Legion Hall, Steven Temple, 859-6270
 CUB SCOUT PACK 53 - Last Tuesday, 7p.m., American Legion Hall, Steven Temple, 859-6270
 EASTERN STAR - 2nd Tuesday
 GARDEN CLUB - 4th Tuesday
 FLYING CLUB - 1st & 3rd Wednesday, 6:30p.m., Dockside Restaurant
 HAPPY HOBBY DOLL CLUB - 4th Friday, 875-6750
 HISTORICAL SOCIETY - 3rd Tuesday, 7:30p.m., Congregational Church
 KNIGHTS OF COLUMBUS - 1st Tuesday, 7p.m., St. Joan of Arc Church Hall, 293-7749
 LIONESSE CLUB - 1st Wednesday, 6:30p.m., Alton Bay Community House, 875-2791
 LIONS CLUB - 1st & 3rd Thursdays, 6:30p.m., Alton Bay Community House, 875-3070
 MASONIC LODGE - 2nd Thursday

BOARDS AND COMMITTEES

ALTON BAY IMPROVEMENT STUDY COMMITTEE - Meets on call. Chairman J. Leo Meehan, Jr. 875-5311
 BOARD OF SELECTMEN - Meets every Tuesday at 7p.m. Call Town Administrator Jack Henderson for appointments 875-2161
 BUDGET COMMITTEE - Meets on call. Chairman Albert V. Fisher 875-5616
 CONSERVATION COMMISSION - Meets every other Thursday at 7:30p.m. Chairperson Linda Mazalewski 875-2661
 MUNICIPAL BUILDING STUDY COMMITTEE - Meets on call. Chairman A. William Heidke 875-2000
 PARKS AND PLAYGROUNDS COMMITTEE - Meets on call. Chairman Jonathon Downing 875-7307
 PLANNING BOARD - Meets second Monday at 7:30p.m. Secretary Laura Whittemore 875-2171
 SCHOOL BOARD - Meets first and second Mondays. Chairman David McKenney 776-7931
 TRUSTEES OF THE GILMAN LIBRARY - Meets third Monday at 3:30p.m. Chairman David Countway, 569-3648
 TRUSTEES OF TRUST FUNDS - Meets on call. Joseph R. Houle 875-7321
 WAGE AND SALARY COMMITTEE - Meets on call. Chairman Eldon C. Swim 875-5158
 ZONING BOARD OF ADJUSTMENT - Meets on call. Chairman David Birdsey 875-5250

SENIOR CITIZEN MOVIES

Every Tuesday and Friday, a free film program is presented following the Senior Meal Site lunch program at the Alton Bay Community House. The films and VCR are donated by The Fone Shoppe in Alton Bay.

HISTORY HIGHLIGHTS

by Al Fisher

September 22, 1722. Today completes two years since Father cut down the first tree and now we have upwards of thirty acres cleared up, fourteen of which we planted this year." E. Roberts (Old New Durham Road).

NEW DURHAM CAMERA CLUB - 2nd & 4th Wednesday, 7p.m., New Durham School
 ST. JOAN OF ARC LADIES GUILD - Last Wednesday, 7:30p.m., Church Hall
 SENIOR CITIZENS - 1st Monday, 1p.m., Alton Bay Community House
 COMMUNITY ACTION PROGRAM:
 Mon. & Fri., 1 - 3p.m., Wed., 9a.m. - 3p.m., Alton Bay Community House, 875-7102

FNSBANK

FARMINGTON NATIONAL & SAVINGS BANK

BANKING HOURS

MON. THRU THUR. 9 TO 5
 FRIDAY 9 TO 6
 SAT. MORNING 9 TO NOON

FARMINGTON, N.H.
 TEL. (603) 755-2255

ALTON, N.H.
 TEL. (603) 875-8111
 24 HOUR BANKING

Letterheads Envelopes Business Cards

ALTON PRINTING COMPANY

Church Street
 Alton, N.H.
 875-2197

Invoices - Fliers Statements, Etc.

LP GAS - FUEL OIL - MOBIL LUBRICANTS - HEATING SYSTEMS

**FERNS** Energy Centers

Main Street
 Alton, NH 03809

875-3500

YOUNG ASTRONAUTS NAMED AS STATE PILOT CHAPTER

Alton Chapter 316 of the Young Astronaut Program has been nominated as "Pilot Chapter" for New Hampshire. A letter from Program Executive Director T. Wendell Butler advises that the invitation is in recognition of the "demonstrated interest" and "enthusiastic response" of Chapter Leaders Mary Batchelder and Rolf Dutzmann.

The role of Pilot Chapter means Alton's Young Astronauts will receive Program materials at no expense in return for providing assessments of those materials for the Program. There are only 55 Pilot Chapters in the United States and American schools abroad. This recognition can mean publicity for the Alton Chapter through the Program newsletter, or possibly a visit to an aerospace facility.

At present, Alton's Young Astronauts are preparing to participate in a nationwide model rocketry competition to take place on local and regional levels in January and March 1986. Competitors will build and launch model rockets conforming to Council specifications and rules, to be judged both for appearance and flight performance. Entries may be either built from commercial kits or as "custom" models, but must be constructed and operated in accordance with National Association of Rocketry safety requirements.

The Alton Chapter is seeking local civic or business sponsors who would like to support this approach to the frontiers of tomorrow. For example, rocket kits for the competition, while inexpensive, must be purchased by the Chapter. Interested parties may contact Rolf Dutzmann at 293-8095 or Mary Batchelder at the Alton School.

TIGER CUB SCOUTS

Tiger Cub Scouts is open to any first grade boy and his adult partner. Call Linda Hanley at 859-6270 for more information.

HISTORY HIGHLIGHTS

by Al Fisher

The islands in the lake, particularly Rattlesnake, were used for raising sheep. No fences - no predators (wolves).

EMERGENCY LIGHT SWITCH

The Alton Police Department is accepting orders for the Stater 911 emergency light switch. The unit is a 3-position switch that replaces your regular wall switch that controls your outside light. The switch allows the light to go on or off normally or blink rapidly to signal an emergency at your residence.

Chief Thomas Mynczywor noted that often precious time is lost by emergency personnel trying to locate a particular residence where someone has called for police, ambulance or fire assistance.

Anyone interested in purchasing the switch should contact the Police Department. The cost is \$15.00.



SUBMIT YOUR NEWS

Information may be submitted in writing to MAIN STREET about special events sponsored by Alton organizations, club meetings, and news of interest to the general public.

Send any material to Post Office Box 210 Alton Bay, NH, 03810, by the 15th of each month for the following month's issue. Items to appear in the February issue must be received by January 15.

MAIN STREET reserves the right to limit or edit all material. For additional information, call 875-3070.

MAILING LIST

MAIN STREET is distributed free to all residents of Alton. Each postal patron with the Zip Code 3809 and 03810 should receive a copy automatically.

If your mailing address has a different Zip Code than either of those and you wish to receive MAIN STREET each month, call 875-3070.

INSURED

FREE ESTIMATES

JOHN'S PAINTING

INTERIOR & EXTERIOR
RESIDENTIAL - COMMERCIAL

JOHN SIMONTON, Proprietor
875-2745

RFD 1 - BOX 185
ALTON, N.H. 03809

Video Films
VCRS
Accessories

Sales & Rentals

THE VILLAGE VIDEO

Box 837, Main St.
Alton, NH 03809

(603) 875-2233

Norm & Terry Gilmore

DOWNING REAL ESTATE

LAKE-OCEAN-RESIDENCE-COMMERCIAL-PROPERTIES

BOX 37
LAKE WINNIPESAUKEE
ALTON BAY, NEW HAMPSHIRE 03810 BUS. 1-603-875-2232

SKI LESSONS AVAILABLE FOR SCHOOL CHILDREN

The Alton School is one of many benefitting from a Belknap County project which offers ski instruction and practice at the Gunstock Ski Recreation Area in Gilford. Ski School Director Sally Roberts advises that instructors, facilities and rental equipment are made available at nominal prices to supplement and enhance winter physical education activities.

Luanne Dadura, coordinating for the Alton School, notes that the program provides many students a chance to learn to ski which they might otherwise have missed. The course is held in January; elementary students go once week, junior and senior high schoolers twice a week. Each session includes one hour of professional instruction followed by four hours of supervised practice of learned skills.

Cost to students for this recreational and educational opportunity is very reasonable. Daily lessons are \$3.50, lift tickets are \$2.00, and \$2.50 rents a complete package of boots, skis, and poles. Director Roberts compares this to the usual charge of \$10 per lesson, \$12 or \$15 for lift tickets and \$12 for equipment rental.

Mrs. Dadura adds that the program has



been very popular at school in the past, with most participants emerging capable of enjoying the sport with safety and proficiency.

HISTORY HIGHLIGHTS

by Al Fisher

Alton, Illinois, was the site of the largest Union prison for Confederate soldiers in the North.

HISTORY HIGHLIGHTS

by Al Fisher

In 1870, 85% of the Town of Alton was cleared land.

LAKES REGION LIVING, INC.

REALTORS & BUILDERS
ROUTE 11, BOX 314, ALTON BAY, N.H. 03810

Bob Williams-Scott Williams
Cindy Duffek-Rae Jean Dobson



OFFICE: (603) 875-6051

The William Tell Inn



Route 11
W. Alton, N.H.
293-8803

Serving 5:00 P.M. Till Closing
Sunday Brunch Noon Till 3:00

SERVISTAR.

(603) 875-3900

ALTON HOME CENTER

HOURS:
Mon. - Sat 7:30 - 5:00
Sun. 9:00 - 12:00

P.O. BOX 57
ALTON, N.H. 03809



Main Street

Bulk Rate
U.S. Postage
PAID
Permit No. 2
Alton Bay, N.H. 03810

POSTAL PATRON