

Main Street

VOL. IV, NO. 9

SEPTEMBER 1988

ALTON, N. H.



Photo by John Duffek

93 YEAR OLD Ralph Temple received the Boston Post Cane from Selectmen Chairman Russell Jones at a recent Town Hall ceremony. The cane is presented to the town's oldest resident.

MASTER PLAN MEETING RECRUITS COMMITTEES

A sizeable turnout at the August 4th workshop launched the update process for the Alton Master Plan and Zoning. Volunteer committees were recruited in the areas of Housing, Land Use, Conservation, and Community Facilities.

In discussion groups, several desired Alton characteristics as well as potential issues were identified. These preliminary items will be the basis for a community-wide mail survey to get a much broader input.

September calls for the survey analysis and collection of town and regional data. In October, survey results will be studied and goals and objectives drafted for finalization in November, as will zoning amendments for March.

The December-February period will feature public hearings for zoning amendments, and the development of comprehensive zoning changes. Work will continue throughout the period on Master Plan drafts with a final draft in the March-April period followed by adoption by the Planning Board. Another workshop will be held in this period to review all committee work and share the results with the public.

OLD HOME WEEK PARADE HIGHLIGHTS CELEBRATION

By John Duffek

There were antique cars, marching and riding bands, colorful floats, youngsters on decorated bicycles, fire and emergency vehicles, riders on horseback, hundreds of spectators and ideal weather for a parade that highlighted the 10-day 1988 Old Home Week.

Chairmen John Conboy, John Irving, and Charles Shields offered a variety of events and programs that appealed to all ages and interests. From rock concerts to organ concerts, from an antique boat show to bicycle trick riders, from square dancing to country boot stompin', from a pancake breakfast to a chicken barbeque, from a water ski show to a magic show, from an ecumenical service to fireworks. There was something for everyone.

Hours of planning and preparation by the committee left its members weary but satisfied that they had produced a grand time for Alton residents and guests. One chairman was even overheard to suggest to his colleague "how we should do that next year." And after ten days of supervision and coordination!

PARADE WINNERS

Kim's Kiddie Korner was named the best parade entry winning both the commercial division and best overall. Second place in the commercial division went to Ryan and Bodine Realtors.

Other parade winners were the Hudson American Legion Post 48 in the band division; the Alton-New Durham Lions Club, club division; Cub Scouts, children's division; Alton Bay Campmeeting Association, private division; Susan and Bill Bunker, antique car division, Karin Howard, horse division, and Barnstead Parade, emergency vehicle division.

Parade Marshalls were Edward Consentino and Sam Fisichelli. Linda Hanley and Jeanne Irving were committee secretaries and Terri Loanes was treasurer. Committee members were Barbara Bohannon, Pat Brady, Terry Decatur, Martha Headley, Richard Headley, Kim Kroeger, Don Matson, Linda Matson, and Joseph Potvin.

Nothing in the world is friendlier than a wet dog.

SCHEDULES

CHURCHES:

- Advent Christian Church - Sunday 11a.m. & 6p.m.
- Baha'i Fireside - Wednesday 8p.m., Gustafson Residence, 293-7865
- Community Church - Worship Service 10a.m. followed by Fellowship Hour, 11a.m., Baptist Meeting House, Rev. Dwight V. Meader
- Hosanna New Testament Fellowship - Sunday School 9:45a.m., Church 10:45a.m., American Legion Hall, Rev. Gene V. Beaudry
- St. Joan of Arc - Saturday 5p.m., Sunday 8 & 11a.m., Msgr. Leo Hines

COMMUNITY ACTION PROGRAM:

Monday & Friday 1 to 3p.m., Wednesday 9a.m. to 3p.m., Alton Bay Community House, 875-7102

GILMAN LIBRARY:

Monday & Wednesday Noon to 8p.m.
Friday 9a.m. to 5p.m. Saturday 9a.m. to noon

TOWN HALL:

Selectmen's Office, Tax Collector, Town Administrator, and Town Clerk - 8:30a.m. to 4:30p.m.
Welfare Officer - Call 875-2000
Planning Board - Monday 9:30a.m. to 4:30p.m., Tuesday and Wednesday 8:30a.m. to 4:30p.m., Closed Noon to 12:30p.m.

LANDFILL:

Open Daily 8a.m. to 3:30p.m. except Sunday and Wednesday

ORGANIZATIONS:

- ALTON CONCERNED TAXPAYERS - Meets on Call, 859-2021
- AMERICAN LEGION - 2nd Monday 7p.m., American Legion Hall
- AMERICAN LEGION AUXILIARY - 2nd Monday 7p.m., American Legion Hall, Frances Cassidy, 859-4741
- BOY SCOUT TROUP 53 - Tuesday 7p.m., American Legion Hall, Steven Temple, 859-6270
- CHESS CLUB - Tuesday 7:30p.m., Busy Corner Store
- CUB SCOUT PACK 53 - Last Tuesday 7p.m., American Legion Hall
- EASTERN STAR - 2nd Tuesday
- GARDEN CLUB - 4th Tuesday, 875-6426
- FLYING CLUB - 2nd Wednesday
- HAPPY HOBBY DOLL CLUB - 4th Friday, 875-6750
- HISTORICAL SOCIETY - 3rd Tuesday 7:30p.m., Cong. Church
- KNIGHTS OF COLUMBUS - 4th Tuesday 7:30p.m., St. Joan of Arc Church Hall, Henry Soucy, 364-7816
- LIONESS CLUB - 1st Wednesday 6:30p.m., Alton Bay Community House, 875-5645
- LIONS CLUB - 1st & 3rd Thursdays 6:30p.m., Alton Bay Community House, 875-5916
- MASONIC LODGE - 2nd Thursday, 875-6610
- NEW DURHAM CAMERA CLUB - 2nd & 4th Wednesday 7p.m., New Durham School
- ST. JOAN OF ARC LADIES GUILD - Last Thursday 7:30p.m., Church Hall
- SENIOR CITIZENS - 2nd Tuesday 10a.m., St. Joan of Arc Rectory

CALL 569-4441 TO UP-DATE THE ABOVE LISTINGS

ROYALTY DOLLS

The discussion at the September meeting of the Happy Hobby Doll Club will focus on Royalty Dolls. Members and guests are invited to attend at 7p.m. on Friday, the 23rd, at the Alton Bay Community House.

BOARDS AND COMMITTEES

- ALTON BAY IMPROVEMENT STUDY COMMITTEE - Meets 1st Wednesday in the Town Hall and third Wednesday in the Alton Bay Community House, 7:30p.m., Co-Chairmen Scott Williams 875-3315 and Cathy Mars, 875-6277.
- BOARD OF SELECTMEN - Meets every Monday at 8a.m. Chairman Russell Jones. Call 875-2161 for appointments.
- BUDGET COMMITTEE - Meets on call. Chairman Kim Kroeger 293-8830
- CAPITAL IMPROVEMENTS COMMITTEE - Meets on call. Chairman Thomas W. Varney, 875-7110.
- CEMETERY TRUSTEES - Meets on call. Chairman Thomas Hoopes, 875-3400.
- CONSERVATION COMMISSION - Meets every other Thursday at 7:30pm Chairman Thomas Hoopes, 875-3400.
- FIRE WARDS - Meet on call. Chief Russell E. Jones 875-7510.
- GILMAN MUSEUM COMMITTEE - Meets on call. Anna Haase, 875-5611, Eleanor Hayes, 875-7420.
- LAKES REGION PLANNING COMMITTEE REPRESENTATIVES - Chairman Juliet E.E.Peverley, 875-7232.
- LAND TRUST TASK FORCE - Meets on call. Chairman to be elected.
- OLD HOME WEEK COMMITTEE - Meets on 3rd Monday at 7p.m. in the American Legion Hall. Co-Chairmen John Conboy, 875-2825 and John Irving, 875-2791.
- PARKS AND PLAYGROUNDS COMMITTEE - Meets 1st Tuesday at 7:30pm. Chairman Jonathon Downing, 875-7243.
- PLANNING BOARD - Meets 1st Tuesday at 7p.m. Chairman Thomas W. Varney, 875-7110.
- SCHOOL BOARD - Meets 2nd and 4th Mondays. Chairman David McKenney, 776-7931.
- SUPERVISORS OF THE CHECKLIST - Meet on call. Chairman Alice Ziegra, 875-2151.
- TRUSTEES OF THE GILMAN LIBRARY - Meets 3rd Monday at 3:30p.m. Chairman Ellamarie Carr, 776-4833.
- TRUSTEES OF TRUST FUNDS - Meets on call. Chairman Joseph R. Houle, 875-7321.
- WAGE AND SALARY REVIEW BOARD - Meets on call. Chairman Eldon C. Swim, 875-5158.
- WATER COMMISSIONERS - Meet on call. John Streeter, 875-2490.
- ZONING BOARD OF ADJUSTMENT - Meets on call.

DID YOU KNOW THAT.....
it is against the law to dump household rubbish in the town trash containers?

MAIN STREET
Published Monthly by Voice of Alton, Inc.
A Non-Profit Organization

Editor.....John Duffek
Assistant Editor.....Catherine Calvert
Business Manager.....Marion MacDonald
Advertising Manager.....George Bornheim
Circulation Manager.....Robert Smith
Staff.....Eileen Beckett, Rose Bornheim, Eileen Brown, Bob Calvert, Jeanne and Ted Cole, Linda Hanley, Barbara Ingoldsby, Doris Selfridge, Jean Roberts, Gerald Row

Printing.....Alton Printing Company
P. O. Box 210, Alton Bay, NH 03810
Phones: Editorial - 569-4441 Advertising - 875-6963
Subscriptions are available to receive Main Street by first class mail at \$5 for 12 issues

"I DON'T GET ANYTHING FOR MY TAXES!"

By an Anonymous Taxpayer

Have you ever heard this lament? Sure you have. It happens not infrequently. Maybe they mean "I don't get as much as I think I should." Let's face it, taxes don't head any popularity lists, especially rising taxes. But is it true? I think not! As a matter of fact, on analysis, the average Alton taxpayer is getting a lot more than he/she may realize. Actually on an equalized tax basis, most of us in Alton are getting a better "break" than most surrounding towns in the Lakes Region.

Excellent school facilities and personnel take a big bite out of the tax dollar. Most of us chose Alton to live in because of the quality of life here. That quality of life is directly proportionate to the quality of the school. Many of us have no children in school. Why pay? Aside from the quality of life reason, most can recall when they did have children in school (either here or someplace else) and may forget that others helped pay the "freight" then and we gladly accepted it. Now it's our turn!

We get excellent police protection and service 24 hours per day with up-to-date facilities and equipment. We have an unexcelled volunteer fire department and fire protection 'round the clock with much-needed capital equipment continuously updated. We have a fine landfill and solid waste disposal facility. We have building inspection and health services for the fairness and protec-

Continued on Page 6

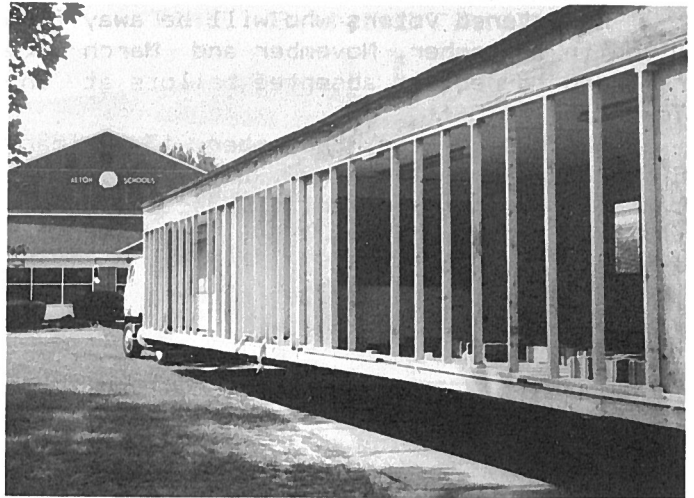


Photo by John Duffek

MODULAR CLASSROOMS in use at Alton Central School during the last two years were removed last month in preparation for the opening of school. The portable units are replaced by classrooms in the recently completed expansion program.

The Art Place

**CUSTOM FRAMING
GALLERY - ANTIQUE PRINTS**

**ALTON BAY
RIVER LAKE ROAD
875-6811**

**WOLFEBORO
MAIN STREET
569-6159**

LAKES REGION LIVING, INC.

875-6051

- * Excavation Work
- * Septic System Installers
- * Sand and Gravel



Route 11, Box 314, Alton Bay, N.H. 03810



STOVEPIPE

ALTON COUNTRY SUPPLY

OPEN
7 DAYS

875-3241

MAIN ST
ALTON

**ALTON VILLAGE 5 & 10
V & S Variety
Main St., Alton**

Cecil Saydah

4.38 While Supplies Last
Ruffled kitchen towel and pot holder set in asst'd patterns. K1004 2SET

MISS BRECK

White Cornflake
94¢

Cecil Saydah

4.38 While Supplies Last
Kitchen slice rug. 100% polyester. latex nonskid back. Asst'd. K6001 C

**SCHOOL SUPPLIES, LUNCH
BOXES, BACK PACKS,
FALL FASHIONS, HAND BAGS**

**While Supplies Last
875-5510**

ABSENTEE BALLOTS

Registered voters who will be away from Alton in September, November and March are reminded to request absentee ballots at the Town Clerk's Office.

Ballots for the September 13 Primary Election are available now. Separate applications for the Presidential Election on November 8 and the March 1989 Town Election also are available now.

Ballots must be mailed or hand delivered to each voter.

GLADYS HEIDKE

The recent passing of Gladys Heidke represents a sad loss for Alton and its citizens. Almost a life-long resident, she was the first lady elected here to the role of Selectman and continued her interest in town affairs throughout her life. All Altonians pause in prayerful salute to the memory of a great lady.

MASONS RESCUE ROBINS

By Shirley Smith

This spring, the mother robin was apparently lulled into a false sense of security when she chose as a nesting site the top of the shelter over the barbeque pit on the grounds of the Masonic Temple in Alton.

Recently on a 90-plus degree Saturday while the members were cooking for a supper, they noticed two baby robins flopped over in the area around the pit. Both birds were in great distress having tumbled out of their nest in efforts to avoid the intense heat and smoke from the fire and the weather.

The "Chefs" ministered to them by dripping water into their very receptive beaks and then one man put on gloves and carefully removed them to a grassy knoll behind the pit area. Mother robin soon located her family and fed and tended them while the cooks went on back to their tasks.

After the meal had been served and the heat from the cooking embers was dying down, the rescue party checked the nest in preparation to returning the chicks to their home. To their great surprise there was one more baby robin still in the nest. That stalwart survivor was also given some welcome water and perked up immediately. The robin family was then reunited and there were a lot of happy smiles around the fireside that evening.

WENTWORTH'S FIREWOOD & TREE SERVICE TREE EXPERT



MITCHELL AVENUE ALTON, N.H. 03809
(603) 875-7579

WAYNE WENTWORTH

DID YOU KNOW THAT.....
hawkers, peddlars, or itinerant vendors must obtain a license before selling in Alton?



OAK BIRCH INN
ON LAKE WINNIPESAUKEE

CLOSING

Monday September 5th

REOPENING

Friday October 7th - 10th
Columbus Day Weekend

7th Annual Halloween Costume Party

Sunday October 9th

Featuring
"TIN PAN ALLEY"
8-12 P.M.

Route 28A 875-5200 Alton Bay

Ice Creams
Soft/Hard

875-6611



drive-in for the Freshest
Burgers, Saladrolls, Fries
and Pizza the Bay
has to offer

SANDY POINT RESTAURANT

on Route 11 in Alton Bay
Open June thru September

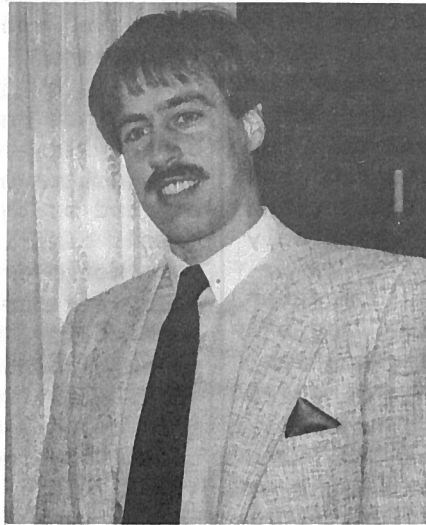
OPEN WEEKENDS

For reservations call 875-6001

STATE POSTS SOUGHT BY THREE ALTON RESIDENTS



VIRGINIA DORE



MATTHEW LOCKE



ALICE ZIEGRA

The names of three Alton Republicans will be on the primary ballot in September for the two positions of Representative to the General Court from Alton and Gilmanton. They are Virginia Dore, incumbent Matthew Locke, and Alice Ziegler. Milton Jensen, the other incumbent, is not seeking re-election.

Each candidate was asked to submit a statement about themselves.

VIRGINIA DORE

I have lived in Alton for over 40 years, and have been owner and operator of Ginny's Beauty Nook for 41 years. My husband, Rawland, and I have two sons - Dennis, a corporation manager, and Douglas, who is in customer sales and service.

As a past president of the Alton-Gilmanton Republican Woman's Club, I have become very interested in politics. I have worked on the campaigns of the last two Republican governors. I am also a past president of the Friends of the Gilman Library, have been an officer several times in the Alton Woman's Club, a member of the Alton Garden Club, the Alton Historical Society, and the American Legion Auxiliary.

Being owner of my own business, I will be able to devote full time to the legislature and still keep my customers happy.

I am a conservative and I hope to help keep our state in its sound fiscal standing and meet the needs of my constituents by being elected to the legislature this coming term.

MATTHEW LOCKE

Ronald Reagan once said, "Government is not the solution to our problems, government is the problem!" That is a philosophy I believe in. After all, who knows better how to run your life than you? Not some faceless bureaucrat or pompous politician!

I am a conservative. Thus, I believe in limited government. After six years in the NH House, it is obvious to me the more power we give government the less freedom we have. So often I've heard people comment that they don't know where their elected officials stand on issues. I've met many, many politicians who, frankly, believe in absolutely nothing except getting re-elected. In light of this fact, I offer my position on some current issues.

I am for the death penalty, a line item veto for the governor, return to annual sessions, strong traditional families, and a 10% across the board decrease in spending. I am against lifetime appointment for judges, unrestrained welfare programs, homosexuals adopting children, abortion, sales or income taxes, and gun control.

ALICE ZIEGRA

Prompted by a desire to be involved in the complex issues of growth and taxation, I have filed for the Republican nomination for Representative to the General Court.

I have lived on my farm on New Durham Road for 26 years. There, I and my late husband, Dr. Louis R. Ziegler, raised two sons - James, an Air Force Captain, and Ames, a veterinarian in Merrimack. I am a graduate of the Department of Nursing of Skidmore College and was able to help my husband in his medical practice and still work, when called upon, by a nearby district nursing agency.

In the past 20 years, I have held several elective offices in Alton as School Board member, Library Trustee, and for 15 years, Supervisor of the Checklist. I have also served as Treasurer of the Republican Town Committee.

Because I will be able to be a full time legislator and am interested in many current issues, I would like the opportunity to continue serving Alton and Gilmanton by election to the legislature this term. I am conservative and feel strongly about the importance of fiscal responsibility and accountability.

LINDON CANDLES & GIFTS

ALTON BAY, N.H.



OPEN DAILY

875-3088

LINDA & DONALD MATSON

Continued from Page 3
tion of all of us.

And then there's a top-flight library and a very active parks and recreation service and program. We have the protection of reasonable zoning ordinances for the protection of all and a full-time planner. Our roads are among the most extensive in the state, and maintenance, plowing, salting, and sanding are carried out by an amazingly small crew.

We have Visiting Nurse and Homemaker services, a Welfare Officer service, and extensive services from the Lakes Region Planning Commission. Our Town Hall is an inquiry and information center. We have a highly qualified Town Administrator working with an elected Board of Selectmen. We have a town attorney to counsel and help protect town interests and the taxpayer. We pay our fair share of Belknap County operating costs.

We have a fair salary plan for town employees based on a professional personnel study. We have a carefully planned Capital Improvements Plan in place, and our Master

Plan (currently being updated) helps guide all future planning. We must in this day and age have liability insurance to protect our volunteers, the town and its employees.

All of these benefits are provided by taxes that result from operating and capital budget items that are carefully reviewed by an elected volunteer budget committee and adopted by the voters at the annual town and school district meetings.

Not everybody directly benefits from every service every year. But like an insurance policy, we know we have protection and peace of mind. And that contributes to the quality of life. Wouldn't you agree that most of us are getting a fair return on our taxes year in and year out?

Postscript: Shortly after submitting this article, I had occasion to call the volunteer fire department to my home for assistance in an emergency. This was an opportunity to observe, first-hand, this swift and efficient service. The system works!



MASONRY REPAIRS
CHIMNEY CLEANING
SAFETY INSPECTIONS
STOVE INSTALLATIONS
ESTIMATES AND
INSPECTIONS FOR RELINING

CERTIFIED BY THE NATIONAL CHIMNEY SWEEP GUILD
CERTIFIED SOLID FUEL SAFETY TECHNICIAN



ALTON BAY - Winnepesaukee waterfront - year round contemporary with dock \$199,500
PRE-CONSTRUCTION - 3Br 1 3/4 B ranch in new sub-division. Buy now and choose your options \$94,500
ALTON - 3Br split entry with red cedar siding on nice lot in new neighborhood of fine homes \$139,900



N.H. TOLL FREE
1-800-635-6051

(603) 875-6051

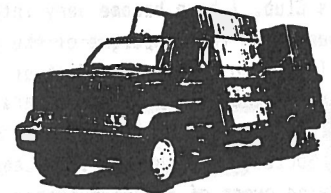


Route 11, Box 314, Alton Bay, N.H. 03810

DID YOU KNOW THAT.....
it is against the law to allow any dog that will fight, chase or assault vehicles or travelers on the highway, or injure, worry, maim or kill domestic animals to run loose?

776-3444

A.J. Martin & Sons Concrete Inc.
Foundations • Floors



PO Box 660
Muchado Hill Road
Alton, NH 03809

Alton Bay Busy Corner Store



Rte. 11, Alton Bay
June & David Howell
603-875-3070

A truly old-fashioned store...

*Souvenirs Posters Cards
"Dreamtime" Romantic Jewelry Calendars
Antique reproduction postcards & paper dolls
Stuffed Animals T-Shirts
Baskets Calico Boxes & Mirrors
Loons of all kinds - Our Specialty
Groceries Beer Wine Fishing Licenses & Equipment*

ALTON BAY BANDSTAND IS 60 YEARS OLD

The following is from an interview with Aida Downing conducted by Nancy Johnston and published in Winnipisaukee Heritage II by Alton School history students in 1980.

In the mid 1920's, a group of men from Alton Bay formed a racing association with the idea of racing speedboats and other boats on Lake Winnepesaukee in Alton Bay.

Members of the association were: Lester Downing, Harry Jones, Ralph Stevens, Edward Downing, Martin Lynch, and Stephen Lynch.

In 1928, the Association decided that a Bandstand should be built in the Bay. The Bandstand would be used for two purposes, Band Concerts and a judging stand for races. The Bandstand was built over a large ledge about halfway between the old Railway Station and Victoria Pier. During the winter

months, when the ice was frozen, a crib was built, filled with rocks and a foundation built over this. The Bandstand was completed later.

Mr. Olie Barnes of Alton was asked to construct the stand with the help of the racing committee and a crew of volunteers. The stand was completed and used, in 1928, for Bandconcerts and boatrides.

The following is from the 1928 Alton Town Report:

Report of the Alton Bay Racing Association.

Cash Received:	
Donations by subscriptions	\$ 915.75
Amount received from Whist parties	134.51
Amount received from the town of Alton	500.00
Deficit	<u>78.54</u>
TOTAL	\$1628.80

Cash paid out:	
Frank I. Hayes, 8 Band Concerts	\$ 660.00
Advertising Mass. Gold Cup Regatta	30.00
Prizes for speedboat races	45.50
Bandstand construction	<u>893.30</u>
TOTAL	\$1628.80

Labor and materials and the use of teams and trucks were donated by the citizens to the extent of \$679.80 making the total cost of the Bandstand \$1,573.10, which is the property of the Town of Alton.

FIRE DEPARTMENT CHICKEN B-B-Q

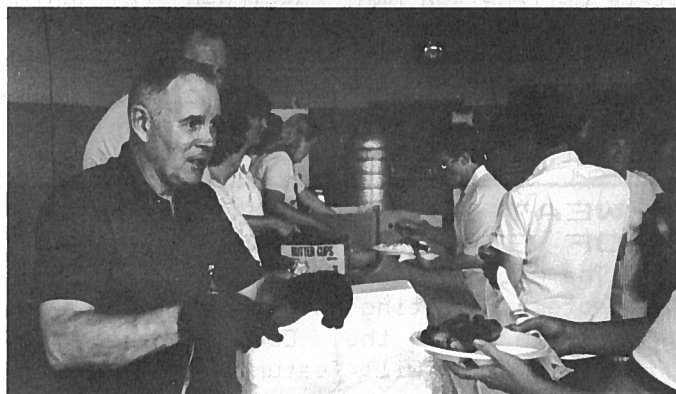


Photo by John Duffek

PROMPT PROFESSIONAL SERVICE

"THE FUSSY ONE"

JAMES E. MARTIN
PAINTING & VINYL HANGING

ROUTE 11 BOX 296
ALTON BAY, NH 03810

(603) 875-5926

JOHN WATSON AUTO REPAIR

LUBE JOBS - TUNE UPS - OIL & FILTER

Front End Alignments

RFD #1, Box 228
ALTON, N.H.

Bus. 776-3511
Res. 776-7731

Simply the Best



ALTON
P.O. Box 993
Alton, N.H.
875-3128



ALTON
P.O. Box 993
Alton, N.H.
875-3128

WATERFRONT

SUNRISE LAKE - 3 bdrm year-round with 80' of waterfront	\$155,000
MERRYMEETING Access - New 3 bdrm, large deck and 3 season view	\$157,900
MERRYMEETING - 2 bdrm cottage, 110' of waterfront on 1 acre	\$198,000
WINNIPESAUKEE Access - 3 bdrms, secluded launch and white sandy beach	\$139,900
WINNIPESAUKEE - 2 lots of record - 1 with 60' waterfront, dock and beach	\$285,000

RESIDENTIAL

ALTON - 2 bdrm Ranch on 14 acres	\$129,000
ALTON - 3 bdrm, 2 bath Contemporary Cape on 5+ acres with views	\$189,000
ALTON - Immaculate 3 bdrm Mobile Home on 2.2 acres with fabulous views of the Belknap Mountains	\$72,900
ALTON - 3 bdrm New Englander in the downtown area - residential and commercial possibilities	\$124,900
ALTON - New 3 bdrm, 2 bath Cape on 2.5 acres - quiet country setting	\$139,000

LAND

We have a wide assortment of difficult to find 5+ acre building lots. All priced to sell in the \$30's, and a building lot with 100' frontage on the Merrymeeting River for \$11,000.

EARLY DRAWDOWN PLANNED AT ALTON'S SUNSET LAKE

The NH Department of Environmental Services, Water Resources Division, has announced that the start of the annual fall drawdown for Sunset Lake has been changed from October 11 to September 6. The purpose of this early drawdown is to allow the Maintenance Bureau to lower the lake level 7 feet to provide for the reconstruction of the gate section of the dam.

Property owners around the lake who wish to utilize this opportunity to make shoreline improvements should apply early for necessary permits to the Wetlands Board at Post Office Box 2008, Concord NH 03302.

ORIENTATION SCHEDULED FOR SCHOOL SUBSTITUTES

An orientation meeting for substitute teachers will be held on Thursday, September 8, at 3:15p.m. in the High School Library. Everyone interested in becoming a substitute is invited to attend.

FACULTY APPOINTMENTS ANNOUNCED BY SCHOOL

Faculty appointments at Alton Central School were announced recently. They include:

Elizabeth Felipe - a graduate of Fitchburg State College; 11 years experience in Special Education; additional graduate courses at Lesley College; certified in Elementary Education and Special Needs; assigned to the high school self-contained classroom.

Nancy Hammerton - a graduate of St. Bonaventure University with a B.A. in English and an M.A. degree in English from the State University of New York at Brockport; assigned to high school English.

Anne Hoopes - the new Elementary Enrichment Teacher; worked last year in the Chapter I Program; an Alton resident.

Margot Walker - certified in Social Studies and Mathematics; 20 years of experience in teaching; a graduate of Ripon College; additional graduate work at Plymouth State College and UNH; assigned to junior high math; resides in Alton.

Nancy Zappone - returning to the Alton School after a year in France at the Sorbonne; will teach second grade; an Alton resident.

WEATHERVANES TOPIC OF SOCIETY MEETING

The Alton Historical Society will hold its September meeting on Tuesday, the 20th, at 7:30p.m. in the Community Church.

The program will feature a slide show and talk on old weathervanes by Anthony Velardo of Tamworth.

Sandy Point Beach Resort
Alton Bay, N.H. - 875-6000

Motels - Cottages

Daily & Seasonal Rentals



(603) 875-7579

WALLPAPER HANGING SERVICE

WAYNE WENTWORTH

MITCHELL AVENUE
ALTON, N.H. 03809

THE BETTER WAY TO SELL YOUR HOME.

Main Street
Alton, NH
Office: 875-2525



EAST ALTON GENERAL STORE

Junction Route 28 & 28A

Alton, NH

875-3113

GROCERIES-COLD BEVERAGES-HOT COFFEE

MOVIE RENTALS-MEGABUCKS-PROPANE

U-HAUL

OPEN 7 DAYS

U-HAUL

At the circle of routes 28 & 11
Alton, NH 03809

Tel. (603) 875-5001
Open year round



River View Motel

Ind. heated & air conditioned rooms
In-room coffee - color TV

Dick and Micki Ford

THE CHECKOUT DESK

By Pat Merrill, Librarian

**ALTON WOMAN'S CLUB
DONATES TO LIBRARY**

The Gilman Library will soon receive a 60-volume set, The Library of America, as a result of a \$500 contribution from the Alton Woman's Club.

This award-winning series of the collected works of America's foremost authors was created to bring the best of our literary heritage back into print. All the significant works of American literature are presented in unabridged, authoritative, hardcover editions.

A special bookplate will be placed in each volume to honor the Woman's Club and a certificate citing the donor will be on display in the Library.

DEADLINE EXTENDED

The Gilman Library is happy to announce the deadline to purchase the PBS video series has been extended until the end of December. The fund is only \$1,000 short of its goal of \$6,000. Anyone wishing to inquire further or to give money for this wonderful series of educational videos should contact the Gilman Library.

**LEGION PICNIC PLANNED
AT ELLACOYA STATE PARK**

American Legion Post 72 and the Legion Auxiliary are planning a family picnic at Ellacoya State Park in Gilford on Sunday, August 28, from 11a.m. to 3p.m. Members and guests are invited.

Water Industries, Inc.

Specialists in Pumping Equipment
Route 28 - Alton, NH 03809

Jacuzzi
Flint & Walling
Gorman-Rupp Pumps
Pumps & Systems
Conditioners

Wilden Air Pumps
Sewage Pumps
Drainage Pipe
Plastic Pipe
Office 875-7000

BRUCE K. JOHNSON
Attorney at Law

(603) 875-6131

Main Street
P. O. Box 817
Alton, N. H. 03809

**ROCK FANS AT
THE BANDSTAND**

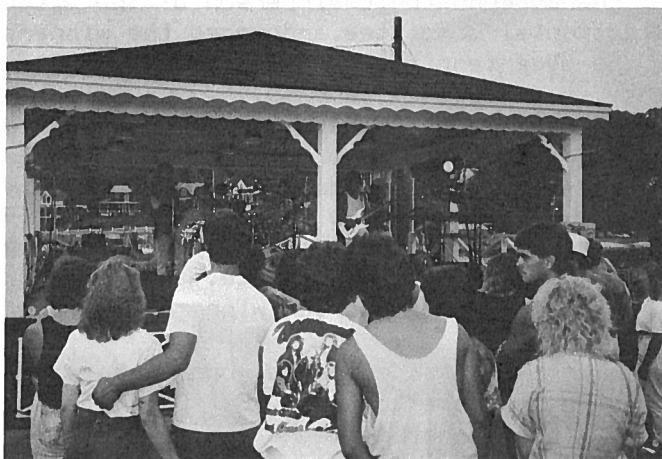


Photo by John Duffek

ABITRONICS

The Fone Shoppe

Busy Corner

Alton Bay, NH 03810
603-875-7190

Channel Master
PIONEER
The future of sound and vision.
Panasonic Winegard
ZENITH
W White Westinghouse
YAESU
Maxon Regency



NOW IN STOCK

Wrangler

JEANS



AND

**WORK
CLOTHES**



ALTON COUNTRY SUPPLY

OPEN
7 DAYS

875-3241

MAIN ST
ALTON

WINNERS ANNOUNCED IN BICENTENNIAL CONTEST

Nancy Johnston, chairperson of the Alton Bicentennial Committee, announced the winners of the Bicentennial Essay Contest for students in grades 8, 9 and 10.

First place in grade 8 went to Kerrie Newlin, second place to Mike Mitchell, and third place to Rob Boudrow.

Rori Boyce won the top prize in grade 9 followed by Gabe Biderman in second place and Luke Howell in third place.

The overall grade ten winner was Cydney Shapleigh.

Participants selected one statement from the Preamble to the U. S. Constitution and explained what it meant to the nation and to them.

LIONESSE FLEA MARKET



Photo by John Duffek

Weddings • Family Reunions • Portraits
Musicians Demo Tapes • Stereo High Fi
Insurance Inventories • Real Estate

YOU OUGHT TO BE IN PICTURES

Video and 35MM

EARLE W. COVELL
Box 81
Alton Bay, NH 03810

(603) 875-6284

DID YOU KNOW THAT.....
all public parks and parking lots are closed to the public from midnight to 5a.m.?

TATTOOING

MEMBER-NDGAA



PUDDLEDOCK GROOMING

ALL BREEDS OF DOGS & CATS
STOCKBRIDGE ROAD
ALTON, NH 03809
603-875-2866

Curry REALTORS.

"Committed to Service Excellence"



ROUTE 11, BOX 336 - ALTON BAY, NH

*you've seen our sold signs,
call us to list your property*



603-875-6600

SERVISTAR.

(603) 875-3900

ALTON HOME CENTER

HOURS:

Mon.-Sat. 7:30-5:00

Sun. 9:00-12:00

P.O. Box 57

Alton, NH 03809

140^(*) DOLL WORKS
NOW OPEN

DOLLS OLD & NEW
CLOTHING & ACCESSORIES
BOOKS & MAGAZINES

DOLL SUPPLIES
COSTUMING
REPAIR & RESTORATION

A FULL LINE OF DOLL-RELATED SERVICES

RUTH A. MESSIER
(603) 875-6750



P.O. BOX 994
ALTON, N.H. 03809

SHOP HOURS

10 am - 5:30 pm Monday - Thursday
1st & 3rd Saturday, 2nd & 4th Sunday
of every month
CLOSED FRIDAY

ALTON PRINTING

Church Street, Alton, N.H.

Wedding Invitations • Carbonless Forms
Advertising Specialties • Business Cards
Letterheads • Envelopes • Sales Slips
Booklets • Calendars

875-2197

SEPTEMBER EVENTS

- Thu. 1 - VOLLEYBALL vs. Gilford, 5p.m., Home
- Sat. 3 - CONCERT: Salvation Army Band, Sponsored by Christian Conference Center, 7:30p.m., Tabernacle
- Mon. 4 - LABOR DAY
- Tue. 6 - FIRST DAY OF SCHOOL
SOCCER vs. Calvary Christian, 4p.m., Away
- Wed. 7 - VOLLEYBALL vs. Pittsfield, 4p.m., Away
- Thu. 8 - ORIENTATION for School Substitutes, 3:15p.m., High School Library
- Fri. 9 - VOLLEYBALL vs. Concord Christian, 4p.m., Away
SOCCER vs. Concord Christian, 4p.m., Away
- Sun. 11 - GRANDPARENTS DAY
- Mon. 12 - ROSH HASHANA
VOLLEYBALL vs. Epping, 6p.m., Home
- Tue. 13 - STATE PRIMARY ELECTION
SOCCER vs. Derryfield, 4p.m., Away
- Wed. 14 - STORY HOUR - 3-5 Year Olds, 10a.m., Gilman Library
VOLLEYBALL vs. Sunapee, 4p.m., Home
- Fri. 16 - VOLLEYBALL vs. Pittsfield, 6p.m., Home
- Sat. 17 - CITIZENSHIP DAY
- Mon. 19 - VOLLEYBALL vs. Gilford, 4p.m., Away
- Tue. 20 - VOLLEYBALL vs. Moultonboro, 4p.m., Home
SOCCER vs. Moultonboro, 4p.m., Home
OLD WEATHERVANES - Sponsored by Historical Society, 7:30p.m., Community Church
- Wed. 21 - YOM KIPPUR
STORY HOUR - 3-5 Year Olds, 10a.m., Gilman Library
- Thu. 22 - AUTUMN BEGINS
- Fri. 23 - SOCCER vs. Linwood, 3:30p.m., Home
ROYALTY DOLLS - Happy Hobby Doll Club, 7p.m., Alton Bay Community House
- Mon. 26 - VOLLEYBALL vs. Ashland, 4p.m., Home
SOCCER vs. Ashland, 4p.m., Home
- Tue. 27 - VOLLEYBALL vs. Epping, 4p.m., Away
- Wed. 28 - STORY HOUR - 3-5 Year Olds, 10a.m., Gilman Library
- Fri. 30 - VOLLEYBALL vs. Nute, 4p.m., Away
SOCCER vs. Nute, 4p.m., Away

SCHOOL OPENS SEPT. 6

The first day of the 1988-89 school year is Tuesday, September 6. Doors will open at 7:40a.m. and all students are expected to be in their homerooms by 8:03a.m.

Students in grades 1-6 will be dismissed at 2:40p.m. and grades 7-12 will be dismissed at 2:47p.m.

Morning Kindergarten ends at 11a.m. and afternoon Kindergarten leaves at 2:40p.m.

MAIN STREET SALUTE TO

.....Old Home Week Chairmen John Conboy, John Irving and Charles Shields and all the members of the 1988 Old Home Week Committee for the many hours they contributed to make this year's event so outstanding.....fifth grader John Herman for creating the winning poster in a contest to encourage participation in the town's recycling program.

DID YOU KNOW THAT.....

parking is limited to 15 minutes in the designated areas in front of the Post Office?

**Video Films
VCRS
Accessories**

Sales & Rentals

THE VILLAGE VIDEO

Box 837, Main St.
Alton, NH 03809

(603) 875-2233

Norm & Terry Gilmore

LP GAS · FUEL OIL · MOBIL LUBRICANTS · HEATING SYSTEMS



FERNS Energy Centers

Main St.
Alton, NH 03809

875-3500
1-800-852-3366
Service & Operations

(603) 875-5853

**tom
tharpe**

ROOFING, SIDING, GENERAL CARPENTRY

Rand Hill Road, Alton Bay, N.H. 03810

FARMINGTON NATIONAL & SAVINGS BANK

BANKING HOURS
MON. THRU THUR. 9 TO 5
FRIDAY 9 TO 6
SAT. MORNING 9 TO NOON

FARMINGTON, N.H.
TEL. (603) 756-2255

ALTON, N.H.
TEL. (603) 875-6111
24 HOUR BANKING

875-3940



Village Stylist

"A FAMILY HAIR CARE CENTER"
MAIN ST., ALTON, NH 03809

Kathy Jones

Michelle Huckins

POLICE ASSOCIATION PENNY SALE

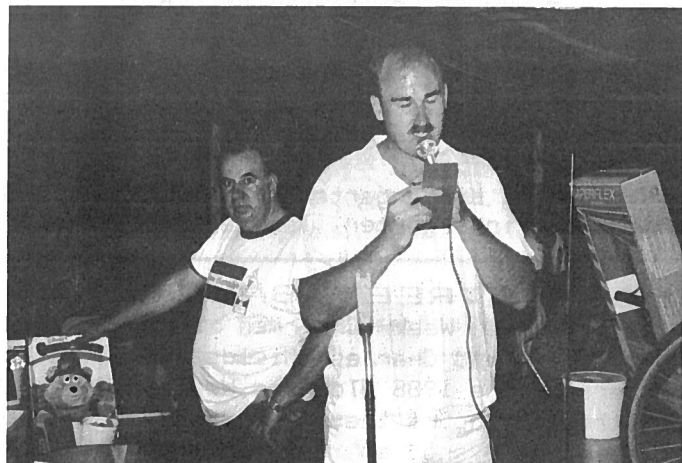


Photo by John Duffek

MAIN STREET AVAILABLE BY SUBSCRIPTION

Main Street is mailed to all Alton residents free of charge by third-class mail.

Because of its third-class status, Main Street may not be forwarded to those away from home for any period of time. However, anyone who wants to receive this publication year-round with first-class delivery may do so by subscribing to Main Street for \$5 per year. This will insure receiving twelve issues of Main Street mailed to your address year round.

Subscription requests should be sent to Main Street, P. O. Box 210, Alton Bay, NH, 03810. Include your name and mailing address and a \$5 check payable to Voice of Alton, Inc. Call 569-4441 for more information.

CLASSIFIED ADS MAY BE PLACED IN MAIN STREET

Alton residents may place classified ads in Main Street each month. Ads are limited to non-commercial, private individuals who have items for sale, items wanted, free items, personals, or help wanted notices. The rate is \$1 for each ad.

Space for classified ads is limited and available on a first-come, first-served basis. Main Street reserves the right to refuse any ad.

Ads may be mailed with payment to P.O.Box 210, Alton Bay, 03810. The deadline is the 15th of the preceeding month.

CLASSIFIEDS

FOR SALE

1985 PLYMOUTH VOYAGER, White w/Red Interior, 37,000 miles with 18,300 miles left on Warranty, A.T., Stereo, Tinted Glass, Extra Clean ans Sharp, 875-3394

24" KENMORE Apartment Size Four Burner Electric Range with Continuous Clean Oven, Also Maytag Washer, 875-3394

20" ELECTRIC LAWN BOY with Rear Bagger, Call 875-3130

HELP WANTED

BABYSITTER, Needed Immediately, Responsible Person to Care for Our 18 Month Old Son, Our Home Preferred, Own Transportation Required, Mother With One Child Acceptable, Full or Part-time, Flexible Schedule, Non-Smoker, Top Pay for Right Person, Call in Alton 776-4541

AERO-CARE CLEANING, Looking for Individual to Join Our Team, Full or Part-Time, Competitive Wages, Call Stu or Tracey at 776-3707

HOUSEKEEPERS, Mornings, Monday thru Friday, Possible Arrangement for Transportation, Call Sandy Point Resort, 875-6000

 **First NH Banks**

WOLFEBORO NATIONAL BANK

Alton, N.H.
603-875-7041

Wolfeboro, NH
603-569-1221



Telephone: 603-875-5480

MAL'S USED CARS

Buy - Sell - Trade

Alton Circle

Route 28, South

Alton, N.H. 03809



Main Street

Bulk Rate
U.S. Postage
PAID
Permit No 2
Alton Bay, N.H. 03810

CAR - RT SORT
POSTAL CUSTOMER