



# Main Street

Vol. V, NO. 10

OCTOBER 1989

ALTON, N.H.

## BENEFIT CRUISE FOR ALTON BAY IMPROVEMENT

The M.S. Mt. Washington's final cruise of the season will be a special event for the people of Alton.

The Winnepesaukee Flagship Corporation has donated the ship, crew, dinner, and entertainment for a Benefit Cruise for Phase I of the Alton-Alton Bay Improvement Committee Revitalization Project.

Tickets, available at Town Hall and the Gilman Library, are \$25 each for a prime rib dinner and dancing to two live bands. All proceeds go the project. The cruise begins at the Alton Bay dock at 6p.m. and returns at 9 o'clock.

Phase I of the Revitalization Project encompasses the area from the Mt. Washington dock to Victoria Pier restaurant. The plan features a boardwalk between the dock and the Alton Bay Community House, a new swim dock, beach area, bricked walkways, and landscaping.

Individuals wanting to sponsor a bench, lamp post, or a planting should contact Committee Chairman Cathy Mars at 875-5095.  
(Photo by Bill Watkins)

## COMMUNITY CHURCH NAMES NEW PASTOR

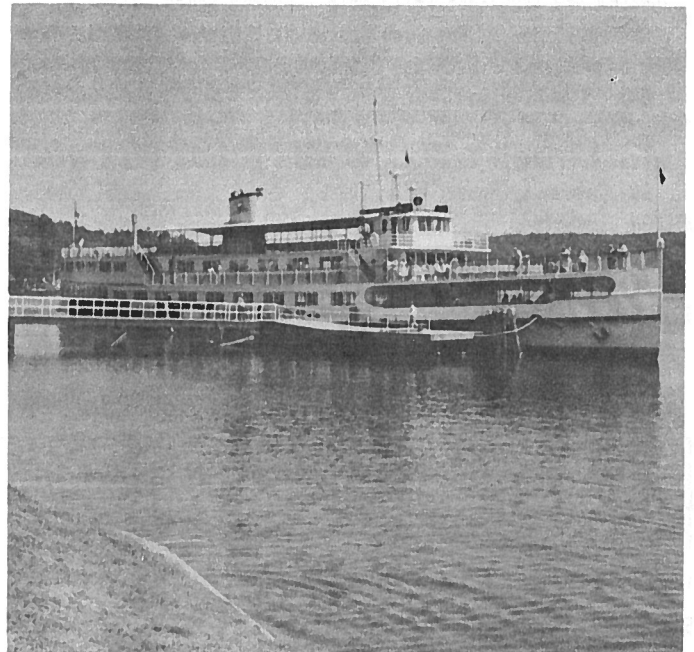
Dr. Peter Roussaki has assumed the leadership of the Community Church of Alton, replacing the Reverend Dwight Meader, who retired.

Dr. Roussaki is originally from Bridgeport, Connecticut. He has received degrees from Southern Connecticut State University, Southern Baptist Theological Seminary, and Austin Presbyterian Theological Seminary and is a candidate for a doctorate in theology from the Boston University School of Theology.

He comes to Alton from the First Baptist Church of Hampton, NH, with his wife, Phyllis, and their two sons, Peter Alex and Jesse Aaron.

## HISTORICAL SOCIETY ANNUAL MEETING

The Annual Meeting of the Historical Society is scheduled for Tuesday, October 17, at the Community Church. The meeting follows a 6p.m. pot luck supper.



M. S. MT. WASHINGTON

## APACHE PLAYERS OPEN 1989-90 SEASON WITH RAND COMEDY/DRAMA

The Alton High School Apache Players will open their 1989-90 season with the Ayn Rand comedy/drama, "Night of January 16th", on October 26, 27, and 28 at 8:10p.m. in the Recital Hall.

The subject of the play is the murder trial of Karen Andre, accused of throwing the man she loved from the top of a building. An unusual feature of the play is the recruiting of 12 members of the audience to act as the jury. This jury determines the ending of the play.

Cast members include veterans Rori Boyce, Jen Brady, Joe Barnes, Luke Howell, Jim Clark, Amelia McKinney, Andi Shealy, Amy Best, and B.J. Quindley as well as newcomers Jessie Miller, Ben Murray, Mark Dugas, Bob Waterman, Sandy Brown, Archie Thibeault, Jeff Brown, Melissa Glidden, Marsha Snow, Heather Patterson, and Danielle Fogg. The production is directed by Elizabeth Lent.

Did Karen Andre really murder Bjorn Faulkner? You decide. See "Night of January 16th".

**SCHEDULES**

**CHURCHES:**

Advent Christian Church - Sunday 11a.m. & 6p.m., Pastor Dr. Warren Harris  
 Baha'i Fireside - Wednesday 8p.m., Gustafson Residence, 293-7865  
 Community Church - Sunday School 9:30a.m., Morning Worship 11a.m., Congregational Meeting House, Rev. Peter E. Roussaki  
 First Free Will Baptist Church - Sunday School 9:45a.m., Church 11a.m., Evening Service 6p.m., Wednesday Prayer Meeting 7p.m., Depot St., New Durham, Pastor James Nason  
 Hosanna New Testament Fellowship - Sunday School 9:30a.m., Church 10:30a.m., American Legion Hall, Pastor Dick Veilleux  
 St. Joan of Arc - Saturday 5p.m., Sunday 8 & 11a.m., Msgr. Leo F. Hines

**COMMUNITY ACTION PROGRAM:**

Monday & Friday 1 to 3p.m., Wednesday 9a.m. to 3p.m., Alton Bay Community House, 875-7102

**GILMAN LIBRARY:**

Monday & Wednesday Noon to 8p.m.  
 Friday 9a.m. to 5p.m. Saturday 9a.m. to Noon

**TOWN HALL:**

Selectmen's Office, Tax Collector, Town Administrator, and Town Clerk - 8:30a.m. to 4:30p.m.  
 Welfare Officer - Call 875-2000  
 Planning Board - Monday 9:30a.m. to 4:30p.m., Tuesday and Wednesday 8:30a.m. to 4:30p.m., Closed Noon to 12:30p.m.

**LANDFILL:**

Monday, Thursday, Friday - 8a.m. to 3:30p.m.  
 Tuesday & Saturday - 7:30a.m. to 3p.m.  
 Wednesday & Sunday - CLOSED

**SENIOR MEAL SITE:**

Monday through Friday 8:30a.m. to 2p.m., Community House

**ORGANIZATIONS:**

AMERICAN LEGION - 2nd Monday 7p.m., American Legion Hall  
 AMERICAN LEGION AUXILIARY - 2nd Monday 7p.m., Legion Hall  
 BOY SCOUT TROOP 53 - Tuesday 7p.m., American Legion Hall  
 CHESS CLUB - Tuesday 7:30p.m., Busy Corner Store  
 CUB SCOUT PACK 53 - Last Tuesday 7p.m., American Legion Hall  
 EASTERN STAR - 2nd Tuesday  
 GARDEN CLUB - 4th Tuesday  
 FLYING CLUB - 2nd Wednesday  
 HAPPY HOBBY DOLL CLUB - 4th Friday 7p.m., Community House  
 HISTORICAL SOCIETY - 3rd Tuesday 7:30p.m., Cong. Church  
 KNIGHTS OF COLUMBUS - 1st and 3rd Tuesday 7:30p.m. St. Joan of Arc Church Hall  
 LIONESS CLUB - 1st Wednesday 6:30p.m., Community House  
 LIONS CLUB - 1st & 3rd Thursday, 6:30p.m., Community House  
 MASONIC LODGE - 2nd Thursday  
 NEW DURHAM CAMERA CLUB - 2nd & 4th Wednesday 7p.m., New Durham School  
 ST. JOAN OF ARC LADIES GUILD - Last Thursday 7:30p.m., Church Hall  
 SENIOR CITIZENS - 1st Tuesday 10a.m., St. Joan of Arc Rectory

\*\*\*\*\*

CALL 875-7300 TO UP-DATE THE ABOVE LISTINGS

**BOARDS AND COMMITTEES**

ALTON/ALTON BAY IMPROVEMENT STUDY COMMITTEE - Meets 1st Wednesday in the Town Hall, Chairman Cathy Mars, 875-6277.  
 BOARD OF SELECTMEN - Meets each Monday at 9a.m. in the Town Hall. Chairman Robert L. Calvert. Call 875-2161 for appointment.  
 BUDGET COMMITTEE - Meets on Call. Chairman Kim Kroeger 293-8830  
 CAPITAL IMPROVEMENTS COMMITTEE - Meets on Call. Chairman Ted Cole, 875-2437.  
 CEMETERY TRUSTEES - Meet on Call. Chairman Harold Copeland, 875-2267.  
 CONSERVATION COMMISSION - Meets Every Other Thursday at 7:30pm Chairman Michael Burke, 875-5492.  
 FIRE WARDS - Meet on Call. Chief Russell Jones, 875-7510.  
 GILMAN MUSEUM COMMITTEE - Meets on Call. Anna Haase, 875-5611, Eleanor Hayes, 875-7420.  
 LAKES REGION PLANNING COMMISSION REPRESENTATIVES - Chairman Juliet E.E. Peverley, 875-7232.  
 LAND CONSERVATION INVESTMENT PROGRAM - Meets on call. Chairmanship vacant.  
 LANDFILL STUDY COMMITTEE - Meets on Call. Chairman Ted Cole, 875-2437  
 OLD HOME WEEK COMMITTEE - Meets 4th Monday at 7p.m. in the American Legion Hall. Co-Chairmen Pat Brady and John Irving, 875-2791  
 PARKS AND PLAYGROUND COMMISSION - Meets on Call. Chairman Jonathon Downing, 875-7243.  
 PLANNING BOARD - Meets 1st Tuesday at 7p.m. Chairman Joseph Bristol. Call Planning Office, 875-5095, for Appointment.  
 SCHOOL BOARD - Meets 2nd and 4th Mondays at 5:30p.m. at School, Chairman Richard Quindley, 875-2910.  
 SUPERVISORS OF THE CHECKLIST - Meet on Call. Chairman Alice Ziegra, 875-2151.  
 TRUSTEES OF THE GILMAN LIBRARY - Meet 3rd Monday at 3:30p.m. Chairman Ellamarie Carr, 776-4833.  
 TRUSTEES OF TRUST FUNDS - Meet on Call. Chairman Joseph R. Houle, 875-7321  
 WAGE AND SALARY REVIEW BOARD - Meets on Call. Chairman Eldon C. Swim, 875-5158.  
 WATER COMMISSIONERS - Meet Last Thursday, Chairman Robert Tilton, 364-2521.  
 ZONING BOARD OF ADJUSTMENT - Meets on Call. Chairman Paul Todd, 875-3772.

**MAIN STREET**

Published Monthly by Voice of Alton, Inc.

Since 1985

A Non-Profit Organization

Editor.....John Duffek  
 Assistant Editor.....Catherine Calvert  
 Business Manager.....Marion MacDonald  
 Advertising Manager.....George Bornheim  
 Circulation Manager.....Robert Smith  
 Staff.....Eileen Beckett, Rose Bornheim, Eileen Brown, Bob Calvert, Jeanne and Ted Cole, Lee Ann Dewey, Debby Eyler, Barbara Ingoldsby, Ben Murray, Doris Selfridge, Jean Roberts, Gertrude and Gerald Row  
 Printing.....Alton Printing Company

P. O. Box 210, Alton Bay, NH 03810

Phones: Editorial 875-7300 Advertising 875-6963

Subscriptions are available to receive Main Street

by first class mail at \$6 for 12 issues

**DID YOU KNOW THAT . . . .**

An ordinance was enacted under Article 35 of the 1971 Town Meeting banning the sale of laundry detergents containing phosphates in this town?

**GILMAN CONCERT SERIES  
BEGINS SECOND SEASON**

The first program in the Gilman Concert Series this year will be held in the Recital Hall of the Alton Central School on Friday, October 20, at 8p.m.

The Egmont String Trio, consisting of violin, viola, and cello, will open the series which is co-sponsored by the School and the Oliver J. M. Gilman Lyceum Fund.

This and all Gilman Concerts are free and open to the public. Seating is limited and tickets, required for guaranteed seats, are available from the School Music Department, 875-7500, ext. 23.

Future programs in this series will feature:

January 12 - The Philomel Piano and Voice Ensemble, with pianist Catherine Dornin of St. Paul's School

March 9 - The Clearlakes Chorale from Wolfeboro

May 4 - The Freese Brothers Big Band from Concord



**ALTON CENTRAL SCHOOL  
VOLUNTEER PROGRAM**

The school year has begun. The children are learning, the teachers are teaching, parents are recuperating, birds are migrating, and what are you doing? Looking for something to do? Why not consider volunteering at the school?

If you read about the Foster Grandparent's Program in last month's Main Street and thought it was neat, but you didn't qualify by age or by income, the Alton School Volunteer Program is for you.

The School is looking for people who have even only an hour or two a week. If you have a special interest or a handy skill, whether it be in clerical, music, reading, arts, listening, computers, tutoring, anything, you could offer your talents to the school.

Volunteers are paired with teachers who have asked for help in a variety of areas. The volunteer can set up a comfortable schedule, an hour a week, a half hour daily... whatever works best.

If you are interested in the program, call program co-chairpersons Laurie Boyce at 875-7371 or Debby Eyler at 364-9571 or Dorothy Bristol, Director of Special Needs at the School, 875-7500.

LP GAS · FUEL OIL · MOBIL LUBRICANTS · HEATING SYSTEMS



**FERN'S** Energy Centers

Main St.  
Alton, NH 03809

875-3500  
1-800-852-3366  
Service & Operations

*Williamsburg Remembered*

Homestead Place, Alton Traffic Circle  
Alton, N.H. 03809

**CLASSES**

Cut & Pierced Lamp Shades, Decorative Paintings  
Multi-Bow Candlerings, Eucalyptus Wreaths, Weave Baskets  
Swags, Sewing, Williamsburg Wreaths

Additional Information Call 875-3644

HOURS: Sun. 11-3 Tues.-Sat. 10-5 Closed Monday



**NOW OPEN ALL YEAR**

**SEAFOOD NIGHT**

Every Friday Evening

Enjoy one of our specially priced  
Seafood entrees

Broiled Halibut	Broiled Swordfish
Showered Shrimp	Broiled Tuna Steak
Seafood Stir-Fry	Broiled Salmon
Fried Cajun Popcorn Shrimp	

**All you can eat -  
Fried Baby Shrimp - \$8.50**

and many more Seafood entrees!

**EVERY FRIDAY & SATURDAY**

**PRIME RIB**

Queen Cut \$9.95 King Cut \$13.95

**COMING IN OCTOBER**

**ITALIAN NIGHT**

watch for details in Main Street

Fall operating hours: Sun 7-5, Mon & Tues 7-3  
Wed - Closed, Thurs - Sat 7am-9pm

Victoria Pier, Alton Bay, NH 875-3096



**HOST FAMILY** member Rori Boyce (left) with exchange student Erika DePadua.

**DID YOU KNOW THAT.....**  
 Blacktop driveways and parking areas located close to the lake contribute significantly to lake pollution?

**EXCHANGE STUDENT IS ALTON SCHOOL SENIOR**

Erika DePadua is a new face, not only in Alton, but in the United States as well. Erika is an AFS exchange student from Belo Horizonte, Brazil. She will be spending almost a year here as a senior at Alton School studying English, Math, U. S. History, and Physics.

Erika says she likes listening to music, reading books, and going to parties and movies. She also plays the flute and is a member of the volleyball Team.

After a nine-hour flight to New York's Kennedy Airport, the exchange students were given an orientation session. "Everybody was really disappointed at not being able to see New York City," Erika said of her first day. The students were then flown to the various states to meet their host families. There are 5 AFS exchange students in New Hampshire.

Belo Horizonte, which means "Beautiful Horizon" is in the southern half of Brazil. It is the third largest city in Brazil where the native language is Portuguese. Erika's father, an architect, her mother, an anthropologist, and her younger brother and sister live there.

Erika's host family, the Robert Boyce's, have taken her to several places including Boston and Sturbridge Village. Now that school has started, long trips are not possible and Erika looks forward to day trips to see more of New England. If you are taking a trip that you think might be of interest to her, you might think to ask her along. Her English is very good and she has a great sense of humor.

Help welcome Erika to Alton. We're glad she's here! (Photo by John Duffek)

**DID YOU KNOW THAT.....**  
 Code numbers on washing product boxes often indicate the degree of phosphate content? Codes beginning with the letter "O" have the least. Codes beginning with the letter "L" or "P" have significantly higher phosphate content. Some boxes don't indicate the content.

**ALTON PRINTING**

Church Street, Alton, N.H.

- Wedding Invitations ● Carbonless Forms
- Advertising Specialties ● Business Cards
- Letterheads ● Envelopes ● Sales Slips
- Booklets ● Calendars

**875-2197**

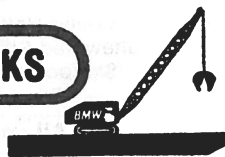


**EXCAVATING CONTRACTORS INC.**

ECI/BMW

P.O. Box 322, Alton Bay, N.H. 03810  
 (603) 875-3033

**BARGE MARINE WORKS**



**EMPTY DESK**

*We have one desk available for a Real Estate Salesperson of the right calibre. No Experience necessary. We provide continuous training. Must be willing to work full time. We furnish sales aids, referrals, leads, bonus plan and pleasant office facilities. For a confidential interview call Bill Ryan.*

**RYAN & BODINE  
 BETTER HOMES & GARDENS  
 ALTON, N.H. 875-2525**



**ALTON COUNTRY SUPPLY  
 875-3241**

MAIN STREET

ALTON, NH 03809

**ON THE WILD SIDE**

By Stuart & Tracey Morris  
Animal Rehabilitators

**EXTENDED WILDLIFE CARE RELIES ON DONATIONS**

This year was a busy one for us having treated 30 birds and animals with two-thirds able to be returned to the wild.

Our thanks to those people who donated cages, fencing, and money. These were all put to good use in the care of injured or orphaned animals.

A more sophisticated center is our goal for the coming year. We are in need of a 15 by 20 shed where we can set up an intensive care area and treatment table. Also, a 15 by 20 flight cage for hawks and owls would improve our center.

New Hampshire rehabilitators receive no funds from the state or federal governments. We rely on caring individuals for help.

Pressure treated lumber for cages, refrigerators, and plastic coated fencing are items we need to maintain a high release rate. The better outfitted our center, the more chances we have of rehabilitating an animal and releasing it back to the wild.

Another project will be the development of an educational program in the school featuring talks and demonstrations.

If you find an animal that appears injured or orphaned, do not feed it, keep it warm and quiet, and call us at 776-3701.

**DID YOU KNOW THAT.....**  
None of the liquid detergents have any phosphate content?

**MELISSA COUNTWAY GETS NH VOLUNTEER AWARD**

Melissa Countway received a certificate as an Outstanding Volunteer of 1988 from Governor Judd Gregg in recent ceremonies aboard the M.V. Mt. Washington.

During her senior year last year, Melissa used her study periods to work with the younger children in the elementary school. She liked her work so much and was so enthusiastic about it, that soon other high school students joined her. The program she began continues this year with seven volunteers.

**SELECTMEN CHANGE TIME OF MEETING**

Through the remainder of 1989, regular Selectmen meetings will be held at 9a.m. on Mondays instead of the previous 8a.m. meeting time. Periodic evening meetings may be scheduled as requested or needed and will be posted when they occur.

Never make the same mistake twice, make a new one.

**FARMINGTON NATIONAL & SAVINGS BANK**

**BANKING HOURS**

MON. THRU THUR. 9 TO 5  
FRIDAY 9 TO 8  
SAT. MORNING 9 TO NOON

FARMINGTON, N.H.  
TEL. (603) 766-2266

ALTON, N.H.  
TEL. (603) 876-8111  
24 HOUR BANKING



"A VIDEO RENTAL LIBRARY"

**THE VILLAGE VIDEO**

Box 837, Main St.  
Alton, NH 03809

ACROSS FROM THE TOWN HALL

(603) 875-2233

Norm & Terry Gilmore  
Kim Patterson

You Ought To Be  
In Pictures

*Photography for all Occasions*  
*Weddings A Speciality*

Earle & Judy Covell  
P.O. Box 81

Alton Bay, N.H. 03810

Video Available

(603) 875-6284

**Renting vs. Buying.  
Dollars vs. Sense.**



Find out how easy it is to get into your first home. Talk to a real estate professional in our office today.

ALTON

Owner Financing! 1.3  
Acre parcel. \$19,900

Ranch, Garage, Quiet  
Country Acre \$79,900



Put your trust  
in Number One.

© 1989 Century 21 Real Estate Corporation as trustee for the NAR ® and ™ trademarks of Century 21 Real Estate Corporation. Equal Housing Opportunity ® EACH OFFICE IS INDEPENDENTLY OWNED AND OPERATED.



**UNITED ASSOCIATIONS  
ELECT OFFICERS**

The United Associations of Alton at their recent annual meeting elected the following slate of officers for 1989-90: President - Sherwood "Woody" Haskins; Vice-President - Fred J. Engelbrecht; Recording Secretary - Ann McCoubrey; Corresponding Secretary - Kay Pettitt; and Treasurer - Thomas Todd. Past President Cynthia Barone was chairman of the Nominating Committee.

**SUBMIT YOUR NEWS**

Information may be submitted in writing to Main Street about special events sponsored by Alton organizations, club meetings, and news of interest to the general public.

Send any material to P.O.Box 210, Alton Bay, 03810, by the 15th of each month for the following month's issue.

Main Street reserves the right to limit or edit all material. For additional information, call 875-7300

These are trying times - try something.

**WORK CONTINUES ON  
SENIOR CENTER**

The Senior Community Center on Pearson Road is becoming a reality. The septic system is in, paint has been purchased, trees have been cut down, and plans are being made.

The building that was purchased in 1983 has been standing empty for 6 years. Last March, the town voted \$20,000 for the septic system and paint for the building.

Now people are needed to help paint the exterior of the building and to help lay the electrical wiring. Also there is work to be done with a bulldozer and a need for gravel for the driveway.

There is, of course, work to be done on the interior of the building. But right now, efforts are aimed at getting it ready for winter. If you would like to volunteer any time or materials to the project, call Evelyn Nardo at 875-3645 or Art Saulnier at 875-7167.

**SUPPORT WELCOMED**

The publication of Main Street is made possible by the Alton businesses who advertise each month. Support these businesses and mention that you saw their ad in Main Street.

Many individual residents have expressed their appreciation for Main Street and have indicated an interest in supporting this activity financially.

We welcome individual support and accept donations sent to Main Street, Post Office Box 210, Alton Bay, NH, 03810

**HILLCREST MARINE, INC.**



**Sales                      Service                      Storage**

*"We'll keep you on top!"*

Mon., Tues., Thurs., Fri. & Sat. 9 to 5  
Sun. 9 to 1pm                      Closed Wed.  
Rte. 28A, Alton Bay, NH 03810                      603/875-5700

**ALTON VILLAGE 5 & 10  
V & S Variety  
Main St., Alton**



**2.47** ea.                      *While Supplies Last*  
Magnetized shower curtain liner with 12 hooks. Durable vinyl, asst'd pastels. 79999



**3.27** ea.                      *While Supplies Last*  
30x60-in. bath sheet of 100% cotton terry. Asst'd colors. Slightly imperfect. NIK3VOM

875-5510



**Mike Swabowicz Enterprises**

General Contracting • Excavation • Paving  
Septic Systems installed & repaired

*Snow Plowing • Sanding*

P.O. Box 438  
Alton Bay, N.H. 03810

(603) 875-5034

**First NH Banks**

**WOLFEBORO NATIONAL BANK**

Alton, N.H.  
603-875-7041

Wolfeboro, NH  
603-569-1221

# MEMORIES OF THE ALTON HIGH SCHOOL REUNION

By Marguerite Chamberlain  
Class of 1926

July 29, 1989 - Alton High School. We begin gathering in the afternoon. From 22 states, Spain and Germany we come, the alumni, classes 1915 - 1964. Counting spouses and escorts we number 472.

Handshakes, hugs, laughter and chatter create an ambience of happiness. The crowd grows larger and divides into groups. Some tour what is to them an entirely new building. Some watch the videotape of the Oak Birch Inn fire. Some just sit and talk.

The afternoon passes and at 5 o'clock we stroll into the gymnasium. On the walls, the work of the grade school art classes, are huge signs bearing, in various bright colors, the names of all the states represented. We notice Arizona, Texas, Mississippi. Long tables with numbers on them crowd the gym. We hunt for the ones having our graduation year. At each place is a small glass etched with the school building, "Reunion", and the date, plus an address holder and a pen, gifts of the committee and the Farmington National and Savings Bank.

The buzz of conversation, shuffle of people walking around, and soft music from an organ continue for a long time. Then John Irving, master of ceremonies, calls for order and we are quiet. There follows a salute to the flag, a prayer by Gerine Piper '63. Grace Dow McEwen '59, now a music teacher in Oregon, sings "The Lord's Prayer". Beginning with '64, classes are called one by one to

the music room for a class photograph.

When the catered buffet dinner is ready we file into the cafeteria to fill our plates with roast beef and many good fixings. We talk, laugh, and say "Remember when ....?" Dessert is served to us.

Marilyn Varney Dame '59, co-chairman, takes over. She extends gratitude to all who helped, introduces special people, awards prizes, and reads some of the memory notes written by the alumni. Many of these emphasized the help and encouragement given them by their teachers.

Dorothy Rollins' poem about Alton is read by her daughter, Gertrude Rollins Griffin '34 and suddenly the event that Marilyn and Robert Witham '56 and their committee had taken months to plan and arrange is over.

We have met old classmates and friends, and time has turned backward for one night. The final memory is of 472 voices lustily singing "We're going to cheer, cheer, cheer" and Marilyn's last cry "Give me an A", and for one more time we do!

BUY & SELL  
CLOSED TEUS, WED, THURS



## Cookie's Place

GIFTS, CRAFTS, ANTIQUES  
OLD RED BARN

JIM & COOKIE FICKE

875-3637  
RTE. 28 SOUTH  
ALTON, N.H. 03809

### CROSSER FAMILY CHIROPRACTIC OFFICE



DR. MARK CROSSER  
DR. CYNTHIA CROSSER

SPECIALIZING IN  
Low Back and  
Leg Pain

River's Bend Professional Bldg.  
P.O. Box 393  
Alton Bay, NH 03810  
(603) 875-3838

## SERVISTAR.

(603) 875-3900

## ALTON HOME CENTER

### HOURS:

Mon.-Sat. 7:30-5:00  
Sun. 9:00-12:00

P.O. Box 57  
Alton, NH 03809

## Water Industries, Inc.

Specialists in Pumping Equipment  
Route 28 - Alton, NH 03809

Jacuzzi  
Flint & Walling  
Gorman-Rupp Pumps  
Pumps & Systems  
Conditioners

Wilden Air Pumps  
Sewage Pumps  
Drainage Pipe  
Plastic Pipe  
Office 875-7000

### BRUCE K. JOHNSON

Attorney at Law

(603) 875-6131

Main Street  
P. O. Box 817  
Alton, N. H. 03809



**PLAYGROUND DEVELOPED BY COMMUNITY EFFORT**

Alton's community spirit was highly visible this past August when over 150 people showed up to build the new playground at the School. Many arrived at 6a.m. and worked until 8 o'clock in the evening.

Much of the credit goes to Playground Chairman Connie Racine and committee members Sue Blair, Kittie Croes, Sue Fenton, Mike Fuller, Bill Holway, Richard Kirby, Carol Locke, Russ Sample, Janet Sleeper, and Scott Williams.

Team leaders during the construction day were Larry Alting, Fred Ayer, Chris Blair, Lenny Brown, Rick Duncan, Chuck Eyler, John Lord, David Quann, John Racine, Jeanne Sample, and David Sleeper.

Support and donations came from over 40 businesses, organizations and individuals.

A special effort was made by Todd Brown, Ed Consentino, Gary Noyes, Stephen Noyes, Jason Racine, Mike Racine, and Russ Troendle who searched area landfills and dug out tires for the playground structures.

To see if the hard work paid off, just visit the school mid-morning, after lunch, or afternoons. Or consider the words of second grader Terry Feger who wrote "I like the new playground. It is neat and fun. I like the space trolley best. It is fun. All the stuff is exciting. I love school."

(Photo by John Duffek)

**GARAGE SALE  
OCT. 7 10 AM - 4 PM**

Tilton Residence - 875-3860

Echo Shores - Off Rte 11

Tools - Snowblower - Hardware & Miscellaneous items - Marine Equipment

TEL: 875-5352 9 AM-2:30 PM  
TEL: 875-3310 After 4 PM



CUSTOM WORK

**Hank's Furniture Repair & Refinishing**

JUST BEFORE THE MASONIC LODGE

HENRY BEAUSOLEIL

ROUTE 28 S.  
ALTON, NH

**Cut the confusion out of buying and selling your home.**

**FREE!** And easy! Our Buyer's and Seller's Guides make the entire process easier with nearly 50 pages of information.

Send me my free:

Buyer's Guide  Seller's Guide  Both

Name \_\_\_\_\_

Address \_\_\_\_\_

City \_\_\_\_\_ State \_\_\_\_\_ Zip \_\_\_\_\_

Phone \_\_\_\_\_



**Lakes Region Living**  
Rte 11, Alton Bay, N.H. 03810  
**875-8051**



Each office independently owned and operated. © 1989 Realty World Corporation

**DID YOU KNOW THAT.....**

Lawns close to the lake that are fertilized are contributing heavily to lake pollution?

At the circle of routes 28 & 11  
Alton, NH 03809

Tel. (603) 875-5001  
Open year round



**River View Motel**

Ind. heated & air conditioned rooms  
In-room coffee - color TV

**Dick and Micki Ford**

Main St., Alton, NH

**875-HAIR**

FREE 8 oz. Bottle Professional Shampoo with perm. & coupon



**NEXUS**



**CLASSIFIED ADS MAY BE  
PLACED IN MAIN STREET**

Alton residents may place classified ads in Main Street each month. Ads are limited to non-commercial, private individuals who have items for sale, items wanted, free items, personals, or help wanted notices. The rate is \$1 for each ad.

Space for classified ads is limited and available on a first-come, first-served basis. Main Street reserves the right to refuse any ad.

Ads may be mailed with payment to P.O.Box 210, Alton Bay, 03810. The deadline is the 15th of the preceeding month.

**FOR SALE**

10FT.CAR-TOP JON BOAT Complete with Oars, Swivel Seats and Launching Wheels, \$290, 875-2220

TEAKWOOD BAR, Made in the Orient, Paneled Front, Draws and shelves in Rear, Opens to 6ft., Marble Top, \$350, 875-2220

ASHLEY AUTOMATIC WOODSTOVE, Good Condition, \$75, 875-3581

PORTABLE OIL-FIRED SPACE HEATER, Cood Condition, \$125,875-2581

1971 VW BUG, Not Running, Leaks Oil, Good Body, Like to Trade for a Project Sports Car, Motorcycle, Minibike, or Lawn Equipment, 859-4341 Mornings

SALE-IN-THE-FIELD, October 6-9, 9a.m. to 5p.m., Old Wolfeboro Road, Look for the Sign.

**WANTED**

250-275 GAL. OIL TANK, Free or Cheap, 875-7562, Leave Message

CHILDREN to Babysit in my Home, Call Leslie Borelli, 875-7542

**TOM LOYND**  
**PAINTING**  
Interior • Exterior  
Furniture & Boat Refinishing  
Box 1, Alton, N.H. 03809  
(603) 875-5744

**OIL & GAS SYSTEMS**

**Dick Quindley & Sons**

HEATING SERVICE  
COMPLETE SYSTEMS - REPAIRS

EMERGENCY SERVICE  
875-2910

AVERY HILL ROAD  
ALTON, N.H. 03809

**HELP WANTED**

CHOIR DIRECTOR for Active Community Church Choir, 875-2676, 875-3080, 875-5867, or write Box 202, Alton, 03809

HOUSEKEEPING POSITION, 1 or 2 Days a Week, Apply Alton Bay Christian Conference Center, 875-6161

**PERSONALS**

THANK YOU - Aida B. Downing wishes to thank all of her friends for the lovely cards, beautiful flowers, and thoughtful gifts on the occasion of her 90th birthday. She also wishes to thank all who attended her party.



N.H. MASTER #7701

ME. MASTER #10902

**SAM FISICHELLI**  
MASTER ELECTRICIAN  
STOCKBRIDGE CORNER ROAD  
ALTON, N.H. 03809

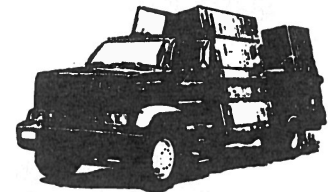
"10% SENIOR CITIZENS DISCOUNT  
INCLUDING SERVICE CALLS"

R.F.D. #1  
P.O. BOX 230C

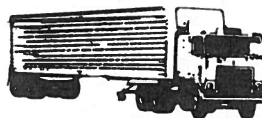
Tel. # 776-6172

776-3444

**A.J. Martin & Sons Concrete Inc.**  
Foundations • Floors



PO Box 660  
Muchado Hill Road  
Alton, NH 03809



**MC KENNEY TRANSPORTATION**

**MOBILE FLEET MAINTENANCE SERVICE**

- TRUCK & EQUIPMENT REPAIR
- AUTOMOBILE REPAIR
- TIRE SERVICE
- STATE INSPECTION STATION
- WELDING



DAVE MCKENNEY  
GAMMONS COR. RD., ALTON, NH (603) 776-7931

**ALTON CENTRAL SCHOOL OFFERS GED ASSISTANCE**

Alton residents who want to complete their high school education and their original class has graduated can receive assistance from the Alton Central School.

General Education Development (GED) refers to a high school diploma that can be obtained through an examination process. It gives people 18 years of age or older an opportunity to demonstrate that they have the skills equivalent to those of a student who graduates from high school.

The five categories of the GED test are Writing Skills, Social Studies, Science, Reading Skills, and Mathematics.

In the past, the Alton Central School has offered study courses, arranged for tests to be given, paid fees for interested students, and, in general, has made it as easy as possible for people to get their GED.

Anyone from Alton who is interested in pursuing this opportunity should call Assistant Principal George Rogers at 875-7500.

**ALTON CENTRAL SCHOOL  
ADULT EDUCATION REGISTRATION FORM**

1. The Adult Education Program is intended to meet the needs of the community. The course list has been developed on the basis of past successful classes and from survey information. If you would like to take a course that is not offered this session, or would like to teach a course during another session, please indicate this to George Rogers, Assistant Principal, at the Alton Central School.
2. On days that school is not in session or has been cancelled for some reason, there will be no Adult Ed classes.
3. Registration may be done in person at the Main Office of the School between 7:30a.m. and 3:30p.m. daily until October 2, 1989. Payment for classes must accompany the registration form. Registration is done on a first-come, first-served basis. Class sizes are listed on the course description sheet available in the Main Office.
4. Classes may be cancelled if minimum enrollment is not reached.
5. Tuition and registration fee refunded only if the class is cancelled or the student withdraws before the second meeting.
6. The Alton Central School assumes no responsibility for accidents or for any personal property left in the building.

For additional information or course descriptions, call 875-7500. All classes are held at the Alton Central School.

<u>COURSE</u>	<u># OF WKS</u>	<u>FIRST CLASS</u>	<u>TIME</u>	<u>COST</u>	<u>INSTRUCTOR</u>
Appleworks	8	Mon. 10/2	6:30 to 8:30 pm	\$25	S. Brown
Bicycle Repair	3	Tues. 10/10	6:30 to 7:30 pm	\$25	TBA
Community CPR	2	Tues. 10/3	6:30 to 9:30 pm	\$11.50	M. MacDonald
GED Test Preparation	- Please call the school for further information (875-7500)				
Glass Etching	4	Mon. 10/2	6:30 to 8:30 pm	\$12	J. Chase
Quilting	8	Tues. 10/10	6:30 to 8:30 pm	\$25	B. Lemery
Slimnastics	8	Tues. 10/10	6:30 to 7:30 pm	\$25	TBA

\*\*\*\*\*

NAME \_\_\_\_\_ PHONE \_\_\_\_\_

ADDRESS \_\_\_\_\_

COURSE \_\_\_\_\_ PAID \_\_\_\_\_



### SENIOR CLASS SPAGHETTI SUPPER

On Friday, October 13, at Sandy Point Restaurant, the Senior Class will be holding their Annual Spaghetti Supper. The feast will be held from 5 to 8p.m. and will offer spaghetti, of course, lasagna, salad, bread, beverage, and pies.

Proceeds go to the Class of 1990 and their chemical-free graduation activities. The cost is \$5 for adults and \$3.50 for children and senior citizens.

### COMMUNITY CHURCH SUNDAY SCHOOL

The Community Church of Alton will hold registration for Sunday School on Sunday, October 1, from 9:30 to 10:30a.m. downstairs in the Sunday School rooms.

All children ages 3 to sixth grade are invited to sign up, meet the new pastor, and share refreshments. For more information, call LuAnne Varney at 875-7110.

### DID YOU KNOW THAT.....

Phosphates are pollutants that contaminate Lake Winnepesaukee and local streams and that some detergents have a much higher content than others?



TELEPHONE 603-875-6151

**DENISE MERRITT, M.D.**

OFFICE HOURS  
BY APPOINTMENT

BOX 900, MAIN STREET ALTON, N.H. 03809



**GOLD COAST**  
Alton Traffic Circle  
P.O. Box 319  
Alton Bay, New Hampshire 03810  
Business (603) 875-6021  
Business (800) 356-6021  
Residence (603) 875-3843



**PATRICIA E. BRADY**  
Sales Associate

*Each Office Is Independently Owned And Operated*

### MAIN STREET AVAILABLE BY SUBSCRIPTION

Main Street is mailed to all Alton residents free of charge by third-class mail.

Because of its third-class status, Main Street may not be forwarded to those away from home for a period of time. However, anyone who wants to receive this publication year-round with first-class delivery may do so by subscribing to Main Street for \$6 per year. This will insure receiving twelve issues of Main Street mailed to your address.

Subscription requests should be sent to Main Street, P.O. Box 210, Alton Bay, NH, 03810. Include your name and mailing address and a \$6 check payable to Voice of Alton.

Be reasonable - do it my way.

### DANCE LESSONS

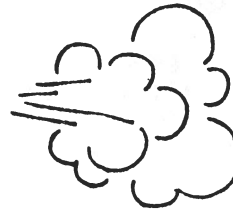


Ballet, Tap and Jazz  
Ages 3 and up

Acrobats and Baton  
Ages 7 and up

Lessons in Wolfeboro Call: Nancy 522-8433

### GALE HILL MASONRY



GARY OICKLE  
875-3335

BRICK - BLOCK - STONE  
CULTURED STONE

CHIMNEYS  
FIREPLACES  
HEARTHES

REPAIRS

### The Country Bonnet

Quality Country Gifts

Lamps

Dolls

Pictures

Throws

Quilts

Cards



Alton, N.H.  
3 Miles from traffic circle

Hours M - F 10-3  
S - Sun 10-4

**OCTOBER EVENTS**

- Sun. 1 - SUNDAY SCHOOL REGISTRATION - Community Church, 9:30 to 10:30a.m.
- Mon. 2 - LAST DAY to register for Adult Education Courses, Alton Central School
- Wed. 4 - STORY HOUR: 3-5 Year Olds - Gilman Library, 10-11am  
VOLLEYBALL vs. Moultonboro, Home, 3:30p.m.  
SOCCER vs. Moultonboro, Home, 3:30p.m.  
CROSS COUNTRY at Sant Bani Invitational, 4p.m.  
BINGO - American Legion Hall, 7p.m.  
READING-DISCUSSION PROGRAM: "A Connecticut Yankee in King Arthur's Court", Gilman Library, 7:30p.m.
- Fri. 6 - CROSS COUNTRY vs. Interlakes, Home, 4p.m.  
BINGO - American Legion Hall, 7p.m.
- Sat. 7 - CROSS COUNTRY vs. Derryfield, Home, 10a.m.  
SOCCER vs. Derryfield, Away, 10a.m.  
HARVEST SUPPER - Masonic Temple, 4:30 to 6:30p.m.
- Mon. 9 - COLUMBUS DAY - School, Town Hall, Landfill Closed  
VOLLEYBALL vs. Gilford, Home, 6p.m.
- Tue. 10 - CROSS COUNTRY at Belmont Invitational, 3:30p.m.  
VOLLEYBALL vs. Nute, Away, 4p.m.  
SOCCER vs. Nute, Away, 4p.m.
- Wed. 11 - STORY HOUR: 3-5 Year Olds - Gilman Library, 10-11am  
BINGO - American Legion Hall, 7p.m.
- Thu. 12 - SOCCER vs. Calvary Christian, Home, 4p.m.

- Fri. 13 - NO SCHOOL - Teachers' Work Day  
CROSS COUNTRY at Kingswood Invitational, 3:30p.m.  
SENIOR CLASS SPAGHETTI SUPPER - Sandy Point Restaurant, 5 to 8p.m.  
BINGO - American Legion Hall, 7p.m.
- Sat. 14 - VOLLEYBALL vs. Ashland, Away, 11a.m.  
SOCCER vs. Ashland, Away, 1:30p.m.
- Mon. 16 - VOLLEYBALL vs. Sunapee, Away, 4p.m.
- Tue. 17 - SOCCER vs. Linwood, Home, 4p.m.  
ANNUAL MEETING - Historical Society, Community Church, 6p.m.
- Wed. 18 - STORY HOUR: 3-5 Year Olds - Gilman Library, 10-11am  
VOLLEYBALL vs. Nute, Home, 4p.m.  
SOCCER vs. Nute Home, 4p.m.  
BINGO - American Legion Hall, 7p.m.  
READING-DISCUSSION PROGRAM: "Pygmalion", New Durham Library, 7:30p.m.
- Thu. 19 - CROSS COUNTRY vs. Laconia Memorial JH, Away, 4p.m.
- Fri. 20 - CROSS COUNTRY vs. Laconia Christian, Away, 4p.m.  
BINGO - American Legion Hall, 7p.m.  
GILMAN CONCERT: Egmont String Trio, Alton Central School, 8p.m.
- Sun. 22 - BENEFIT CRUISE - M.V.Mt. Washington, Alton Bay Dock, 6 to 9p.m.
- Tue. 24 - GARDEN CLUB MEETING: "Solid Waste Management", Congregational Meeting House, 1:30p.m.
- Wed. 25 - STORY HOUR: 3-5 Year Olds - Gilman Library, 10-11am  
BINGO - American Legion Hall, 7p.m.
- Thu. 26 - THEATER: "Night of January 16th", Apache Players, Alton School, 8:10p.m.
- Fri. 27 - BINGO - American Legion Hall, 7p.m.  
THEATER: "Night of January 16th", Apache Players, Alton School, 8:10p.m.
- Sat. 28 - CROSS COUNTRY at Class Meet in Derryfield  
THEATER: "Night of January 16th", Apache Players, Alton School, 8:10p.m.
- Tue. 31 - HALLOWEEN - Trick or Treat, Police Station, 3-6p.m.

**ALTON WOOD PRODUCTS**

**Hard Green Firewood For Sale**

12" - 16" - 18" - 24" Long - Cut - Split - Delivered

**DISCOUNT FOR ALTON RESIDENTS ONLY**

**\$75.00 / CHORD**

**TEL: 875-3508 ANY DAY AFTER 6 P.M.  
NICK LANE, RT 1, Box 180B, ALTON, N.H. 03809**

**EAST ALTON GENERAL STORE**

Jct. 28 and 28A - 875-3113

**OPEN 7 DAYS**

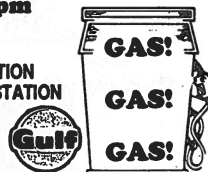
Daily 6 am to 9 pm

Sun. 7 am to 9 pm



PROPANE FILLING STATION  
SELF SERVICE GASOLINE STATION

**U-HAUL**



HOT COFFEE — GROCERIES — ICE COLD BEVERAGES  
ICE — FISH & GAME LICENSES — MEGABUCKS  
VIDEO & NINTENDO CARTRIDGE RENTALS — DAILY & SUNDAY PAPERS

**STOP BY FOR A CHEERFUL GOOD MORNING**

Hot Coffee, a Wall Street Journal, USA Today, Local or Boston Paper and a tankful of gas and be on your way!

**Alton Office Services**

Alton Professional Center • Main Street • Alton NH  
Authorized Agent For

**Metromedia  
Paging Services**

4 Pager Styles • Monthly Rentals as low as \$22.50  
Cindy & John Duffek (603) 875-7300  
Fax Number (603) 875-3162



"Committed to Service Excellence"

**ROUTE 11, BOX 336 - ALTON BAY, NH**

*you've seen our sold signs,  
call us to list your property*



**603-875-6600**

THE CHECKOUT DESK

By Pat Merrill, Librarian

**NEW 5-PART SERIES  
BEGINS OCTOBER 4**

The Gilman Library and the New Durham Public Library will present the first of a new, five-part series of reading and discussion programs beginning Wednesday, October 4, at 7:30p.m. at the Gilman Library. Discussion sessions will alternate between Alton and New Durham.

Participants in the series will discuss two novels, a play, and a book of poetry with a focus on how traditional plots and characters change and gain "new" meanings as they are adapted by novelists, playwrights, and poets for a modern audience.

Also, the magic of the oral tradition will be presented at a special session on November 8 for adults and older children by storyteller/musician Carolyn Parrott.

Ken Bergstrom, lecturer at Plymouth State College, will introduce the series on October 4 with A Connecticut Yankee in King Arthur's Court by Mark Twain. The second program on October 18 at the New Durham Library features Janet Aikens, associate professor of English at UNH, who will lead the discussion of Pygmalion.

Alton and New Durham are among 14 libraries in New Hampshire selected to host "Consider the Source". The series is funded by grants from the National Endowment for the Humanities and New England Telephone. The New England Foundation for the Humanities is the regional sponsor and the New Hampshire State Library is coordinating the project in this state. Additional funding for NH programs has been provided by the Badger Fund of the New Hampshire Charitable Fund.

All programs are free and open to the public. Paperback copies of the books are available to borrow. The program schedule is as follows:

- October 4 (Alton) - Connecticut Yankee
- October 18 (New Durham) - Pygmalion
- November 1 (Alton) - Mrs. Caliban
- November 8 (Alton) - Old Tales Retold
- November 15 (New Durham) - Transformations

**NEW AT THE LIBRARY**

- A World of Difference by Leona Blair
- Clear and Present Danger by Tom Clancy
- A Natural Curiosity by Margaret Drabble
- The Confession of Joe Cullen by Howard Fast
- Payment in Blood by Elizabeth Geogge
- The Old Silent by Martha Grimes
- The Centurion by Jan deHartog
- Blessings by Belva Plain
- The Bridesmaid by Ruth Rendell
- Panther in the Sky by James Alexander Thom

**SENIOR MEAL SITE ACTIVITIES**

- Mondays - Exercise Class and Bingo
- Tuesdays - Arts & Crafts and Cards
- Wednesdays - Bingo
- Thursdays - Movies
- Fridays - Exercise Class and Bingo

**DID YOU KNOW THAT.....**

Most powdered dishwasher detergents have a rather high degree of phosphate content, while liquid dishwasher detergents contain none?

**Lindon Candles & Gifts  
"NEW LOCATION"**

Old Wolfeboro Rd.  
Same Phone Number: 875-3088  
Beginning October 12  
Hours: Thur - Fri - Sat. 10 - 5  
Custom Shirts, Sweatshirts  
NEW MERCHANDISE ARRIVING WEEKLY

**(603) 875-5853**

**tom  
tharpe**

**ROOFING, SIDING, GENERAL CARPENTRY**

*Rand Hill Road, Alton Bay, N.H. 03810*

**ALTON SAND & GRAVEL**

Located just South of the  
Alton Traffic Circle  
**LOAM, SAND, GRAVEL**  
**WHITE BEACH SAND**  
Delivery Available, 435-7151



**35 YEARS**  
IN THE LAKES REGION  
OFFICES IN ALTON,  
WOLFEBORO & OSSISPEE

Business (603) 875-3128  
Box 993 Main Street  
Alton, New Hampshire 03809





**GARDEN CLUB TO HEAR  
LANDFILL SPEAKER**

Ted Cole, Chairman of the Landfill Committee, will speak on Solid Waste Management at the October 24 meeting of the Garden Club. Cole also chairs the Capital Improvements Committee.

The meeting begins at 1:30p.m. at the Congregational Meeting House and awards will be presented for the best flower barrels in the Alton-Alton Bay area.

Refreshments will be served by Chairman Grace Genova assisted by Betty Finethy, Patricia Merrill, Jeanne Perkins, Mariolla Phyllides, Isabelle Stocker, and Rosa Sullivan.

**NOVEMBER CRAFTS FAIR  
SEEKING PARTICIPANTS**

The Alton Middle School is sponsoring a Crafts Fair from 9a.m. to 4p.m. on Saturday, November 4 in the School Gym.

Anyone interested in renting space may contact Linda McKenney at 776-7931.

**PLANNING BEGINS FOR  
1990 OLD HOME WEEK**

The 10th Annual Old Home Week will be held August 10 - 19, 1990, and the planning has already begun.

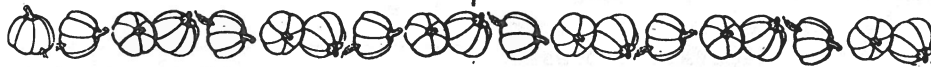
Meetings are held the 4th Monday of every month at 7p.m. in the American Legion Hall and everyone is invited. The committee wants to hear from you with your ideas for new programs, criticisms of past events, or suggestions for improvements.

An early goal of the committee is the selection of a theme and everyone's ideas are welcome.

**TRICK OR TREAT HOURS  
SET FOR OCTOBER 31st**

Hours for "Trick or Treating" on Halloween, Tuesday, October 31, have been set for 3 to 6p.m.

Costumed youngsters and their parents are invited to the Alton Police Station for refreshments and treats.



**DAVID MORSE  
GENERAL EXCAVATION**

(Septic Systems, Driveways, Foundations)  
Etc.

Telephone  
364-5899

P.O. Box 241  
Alton, NH 03809

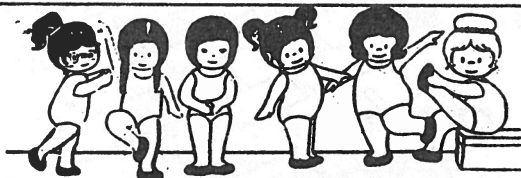
**Village Stylist**

*A Family Hair Care Center*

*Kathy Jones*

**Main Street, Alton 875-3940**

*Evening Appointments Available*



**'Come Dance With Me'**

**Diane's Dance Academy**

Rt. 11B Gilford, N.H.

**TAP - BALLET - JAZZ - BALLROOM**

**DIANE RUEFFERT**

**293-0366**

**Construction Drawings**

for  
Houses, Additions, Garages,  
Barns & Etc.

Call

**BOB EDDY**

Tel. 364-2850

Alton Bay, NH

**25 YEARS EXPERIENCE**

Member - American Institute of Building Designers



**Main Street**

Bulk Rate  
U.S. Postage  
PAID  
Permit No. 2  
Alton Bay NH 03810

**CAR - RT SORT  
POSTAL CUSTOMER**