



Main Street

VOL. V, NO. 2

FEBRUARY 1989

ALTON, N. H.

WINTER CARNIVAL BALL SET FOR FEBRUARY 11

By Debby Eyler

Imagine.....

Imagine a king, a queen, princes and princesses. Imagine a room full of people, dancing, chatting, laughing. Imagine.....

Well, on Saturday, February 11, your imagination can have a rest, because the real thing will be happening at the Alton Winter Carnival Ball. The 54th annual ball will be in Alton School's decorated gym from 8 to 11 p.m. Music of all kinds will be played by DJ Ray Allard of Somersworth and all ages are invited.

Students and faculty have been planning for this event since the beginning of January with a contest for the event's logo, selection of music, and ideas for decorations, all of which have to tie into this year's theme "Imagine".

There is also the Royal Court. The nominees for the King and Queen are selected from the twelfth grade while the Princes and Princesses are selected from ninth to eleventh grades. The voting will take place during the Ball with the winner announced at 10p.m.

This year's nominees for King are Gabe Biderman, Stephen Burke, Dana Sackos, and Keith Watts. Nominees for Queen are Cheryl Hillsgrove, Kristin Mann, Tammy Rogers and Sara Woods.

The students have already selected the princes and princesses and they are: Andy Schofield and Trina Wyatt, 11th grade; Matt Lord and Marni Hunter, 10th grade; and Justin Smith and Kerrie Newlin, 9th grade.

Tickets are available at the door at \$6 per person or \$10 per couple from the Student Council, sponsor of the event.

So.....on the 11th of February, put on your finest attire, and be sure not to miss Alton's Royal Entertainment.

THANK YOU

I want to thank everyone on behalf of myself and my husband who offered their condolences, who sent flowers, who sent cards, and for all their generosity.

Kathleen Moore



CANDIDATES for King and Queen of the 1989 Carnival Ball are (Row 1, l. to r.) Kristin Mann, Tammy Rogers, Cheryl Hillsgrove, Sara Woods, (row 2) Dana Sackos, Stephen Burke, Keith Watts, and Gabe Biderman. (Photo by Mary Christy)

PUBLIC BUDGET HEARINGS SET FOR TOWN, SCHOOL AND SPECIAL ARTICLES

Three public hearings by the Budget Committee occur in early February. The first two sessions will be at the Alton Bay Community House at 7p.m. The third will be at the Alton School at 7p.m. All are extremely important for Alton taxpayers who care about the size of the 1989 taxes.

The dates are:

Wednesday, Feb. 1 - Proposed Town Budget (Selectmen's Budget)

Thursday, Feb. 2 - Proposed Special Articles with Fiscal Impact

Thursday, Feb. 9 - Proposed School Budget

These three meetings represent a chance to get detailed information on proposed budgets, to offer input, and to influence final proposals. Following these public hearings, the Budget Committee will be preparing final recommendations for the School District and Town Meetings in March.

The Annual Town Meeting is scheduled for Wednesday, March 15, at 7p.m. at the Alton Central School. The Annual School District Meeting will follow on Saturday, March 18, at 1p.m., also at the School. Budgets for 1989 will be voted at these two meetings.

SCHEDULES

CHURCHES:

- Advent Christian Church - Sunday 11a.m. & 6p.m., Pastor Dr. Warren Harris
- Baha'i Fireside - Wednesday 8p.m., Gustafson Residence, 293-7865
- Community Church - Sunday School 9:30a.m., Morning Worship 11a.m., Congregational Meeting House, Rev. Dwight V. Meader
- Hosanna New Testament Fellowship - Sunday School 9:30a.m., Church 10:30a.m., American Legion Hall, Pastor Dick Veilleux
- St. Joan of Arc - Saturday 5p.m., Sunday 8 & 11a.m., Msgr. Leo F. Hines

COMMUNITY ACTION PROGRAM:

- Monday & Friday 1 to 3p.m., Wednesday 9a.m. to 3p.m., Alton Bay Community House, 875-7102

GILMAN LIBRARY:

- Monday & Wednesday Noon to 8p.m.
- Friday 9a.m. to 5p.m. Saturday 9a.m. to Noon

TOWN HALL:

- Selectmen's Office, Tax Collector, Town Administrator, and Town Clerk - 8:30a.m. to 4:30p.m.
- Welfare Officer - Call 875-2000
- Planning Board - Monday 9:30a.m. to 4:30p.m., Tuesday and Wednesday 8:30a.m. to 4:30p.m., Closed Noon to 12:30p.m.

LANDFILL:

- Open Daily 8a.m. to 3:30p.m. except Sunday and Wednesday

SENIOR MEAL SITE:

- Monday through Friday 8:30a.m. to 2p.m., Community House

ORGANIZATIONS:

- ALTON CONCERNED TAXPAYERS - Meets on Call
- AMERICAN LEGION - 2nd Monday 7p.m., American Legion Hall
- AMERICAN LEGION AUXILIARY - 2nd Monday 7p.m., Legion Hall
- BOY SCOUT TROOP 53 - Tuesday 7p.m., American Legion Hall
- CHESS CLUB - Monday 7:30p.m., Busy Corner Store
- CUB SCOUT PACK 53 - Last Tuesday 7p.m., American Legion Hall
- EASTERN STAR - 2nd Tuesday
- GARDEN CLUB - 4th Tuesday
- FLYING CLUB - 2nd Wednesday
- HAPPY HOBBY DOLL CLUB - 4th Friday 7p.m., Community House
- HISTORICAL SOCIETY - 3rd Tuesday 7:30p.m., Cong. Church
- KNIGHTS OF COLUMBUS - 4th Tuesday 7:30p.m. St. Joan of Arc Church Hall
- LIONESSE CLUB - 1st Wednesday 6:30p.m., Community House
- LIONS CLUB - 1st & 3rd Thursday, 6:30p.m., Community House
- MASONIC LODGE - 2nd Thursday
- NEW DURHAM CAMERA CLUB - 2nd & 4th Wednesday 7p.m., New Durham School
- ST. JOAN OF ARC LADIES GUILD - Last Thursday 7:30p.m., Church Hall
- SENIOR CITIZENS - 2nd Tuesday 10a.m., St. Joan of Arc Rectory

CALL 569-4441 TO UP-DATE THE ABOVE LISTINGS

TOWN SAND AVAILABLE FOR PRIVATE USE

The Town's policy of providing sand for private use was restated recently to eliminate possible confusion.

Residents are entitled to take up to 2 five-gallon buckets per storm, per household from the town supply during normal operating hours.

BOARDS AND COMMITTEES

- ALTON BAY IMPROVEMENT STUDY COMMITTEE - Meets 1st Wednesday in the Town Hall and 3rd Wednesday in the Alton Bay Community House, 7:30p.m., Co-Chairmen Cathy Mars, 875-6277, and Scott Williams, 875-3315.
- BOARD OF SELECTMEN - Meets every Monday at 8a.m. in the Town Hall. Chairman Russell Jones. Call 875-2161 for appointment.
- BUDGET COMMITTEE - Meets on Call. Chairman Kim Kroeger 293-8830
- CAPITAL IMPROVEMENTS COMMITTEE - Meets on Call. Chairman Ted Cole, 875-7110.
- CEMETERY TRUSTEES - Meets on Call. Chairman Thomas Hoopes, 875-2437.
- CONSERVATION COMMISSION - Meets Every Other Thursday at 7:30pm Chairman Thomas Hoopes, 875-3400.
- FIRE WARDS - Meet on Call. Chief Russell Jones, 875-7510.
- GILMAN MUSEUM COMMITTEE - Meets on Call. Anna Haase, 875-5611, Eleanor Hayes, 875-7420.
- LAKES REGION PLANNING COMMITTEE REPRESENTATIVES - Chairman Juliet E.E. Peverley, 875-7232.
- LAND TRUST TASK FORCE - Meets on Call. Chairman to be elected.
- OLD HOME WEEK COMMITTEE - Meets 4th Monday at 7p.m. in the American Legion Hall. Co-Chairmen Pat Brady and John Irving.
- PARKS AND PLAYGROUNDS COMMITTEE - Meets 1st Tuesday at 7:30pm. Chairman Jonathon Downing, 875-7243.
- PLANNING BOARD - Meets 1st Tuesday at 7p.m. Chairman Thomas W. Varney, 875-7110.
- SCHOOL BOARD - Meets 2nd and 4th Mondays. Chairman David McKenney, 776-7931.
- SUPERVISORS OF THE CHECKLIST - Meet on Call. Chairman Alice Ziegra, 875-2151.
- TRUSTEES OF THE GILMAN LIBRARY - Meet 3rd Monday at 3:30p.m. Chairman Ellamarie Carr, 776-4833.
- TRUSTEES OF TRUST FUNDS - Meet on Call. Chairman Joseph P. Houle, 875-7321
- WAGE AND SALARY REVIEW BOARD - Meets on Call. Chairman Eldon C. Swim, 875-5158.
- WATER COMMISSIONERS - Meet Last Thursday, Chairman Robert Tilton, 364-2521.
- ZONING BOARD OF ADJUSTMENT - Meets on Call.



MAIN STREET

Published Monthly by Voice of Alton, Inc.
A Non-Profit Organization

- Editor.....John Duffek
- Assistant Editor.....Catherine Calvert
- Business Manager.....Marion MacDonald
- Advertising Manager.....George Bornheim
- Circulation Manager.....Robert Smith
- Staff.....Eileen Beckett, Judy Biggar, Rose Bornheim, Eileen Brown, Bob Calvert, Jeanne and Ted Cole, Debby Eyer, Barbara Ingoldsby, Doris Selfridge, Jean Roberts, Gerald Row
- Printing.....Alton Printing Company

P. O. Box 210, Alton Bay, NH 03810

Phones: Editorial 569-4441 Advertising 875-6963

Subscriptions are available to receive Main Street by first class mail at \$5 for 12 issues

FEBRUARY EVENTS

- Wed. 1 - WELL CHILD CLINIC - All Saint's Episcopal Church, Wolfeboro, 9a.m. - Noon
STORY HOUR for 3-5 Year Olds, Gilman Library, 10a.m.
GIRLS BASKETBALL vs. Wilton, Home, 6p.m.
BINGO - American Legion Hall, 7p.m.
BUDGET HEARING - Proposed Town Budget, Alton Bay Community House, 7p.m.
BOYS BASKETBALL vs. Wilton, Home, 7:30p.m.
- Thu. 2 - GROUNDHOG DAY
BUDGET HEARING - Proposed Special Articles, Alton Bay Community House, 7p.m.
- Fri. 3 - FILING PERIOD ENDS for Town and School Candidates
REPORT CARDS ISSUED
GIRLS BASKETBALL vs. Laconia Christian, Home, 6:30p.m.
BINGO - American Legion Hall, 7p.m.
BOYS BASKETBALL vs. Laconia Christian, Home, 8p.m.
- Tue. 7 - GIRLS BASKETBALL vs. Nute, Home, 6:30p.m.
BOYS BASKETBALL vs. Nute, Home, 8p.m.
- Wed. 8 - STORY HOUR for 3-5 Year Olds, Gilman Library, 10a.m.
BINGO - American Legion Hall, 7p.m.
- Thu. 9 - GIRLS BASKETBALL vs. Milton, Away, 6p.m.
BUDGET HEARING - Proposed School Budget, Alton Central School, 7p.m.
BOYS BASKETBALL vs. Wilton, Away, 7:30p.m.
- Fri. 10 - BINGO - American Legion Hall, 7p.m.
- Sat. 11 - PANCAKE BREAKFAST - Alton Central School, 7:30-9:30
54th ANNUAL WINTER CARNIVAL BALL - Alton Central School, 8p.m.
- Sun. 12 - LINCOLN'S BIRTHDAY
- Mon. 13 - BOYS BASKETBALL vs. Concord Christian, Home, 6:30p.m.
- Tue. 14 - VALENTINE'S DAY
BOYS BASKETBALL vs. Laconia Christian, Away, 7p.m.
- Wed. 15 - STORY HOUR for 3-5 Year Olds, Gilman Library, 10a.m.
BINGO - American Legion Hall, 7p.m.
- Fri. 17 - BINGO - American Legion Hall, 7p.m.
- Sat. 18 - FEBRUARY FUNTIME EXHIBIT and SALE - Happy Hobby Doll Club, Alton Bay Community House, 11a.m. - 3:30p.m.
- Mon. 20 - WASHINGTON'S BIRTHDAY OBSERVED
SCHOOL VACATION BEGINS
TOWN HALL and LANDFILL CLOSED
WHIST PARTY - West Alton Fire Station, 7:30p.m.
- Wed. 22 - STORY HOUR for 3-5 Year Olds, Gilman Library, 10a.m.
BINGO - American Legion Hall, 7p.m.
- Thu. 23 - BOYS BASKETBALL vs. Epping, Away, 7:30p.m.
- Fri. 24 - BINGO - American Legion Hall, 7p.m.
SLIDE PROGRAM - Happy Hobby Doll Club, Alton Bay Community House, 7p.m.



RETIREE HONORED

Ernest Batchelor was honored by the Alton Fire Department recently upon the occasion of his retirement from the Department after 25 years of service. Chief Russell E. Jones (left) and Deputy Chief Norman Barrett display the plaque and framed photo presented to Batchelor along with a Department cap. (Photo by John Duffek)

SENIOR MEAL SITE ACTIVITIES

- Mondays - Exercise Class and Bingo
- Tuesdays - Arts & Crafts and Cards
- Wednesdays - Bingo
- Thursdays - Movies
- Fridays - Exercise Class and Bingo

- Sun. 26 - RETIREMENT RECEPTION for Rev. Dwight Meader, Congregational Meeting House, 3p.m.
- Mon. 27 - SCHOOL VACATION ENDS
- Tue. 28 - ICE-OUT CONTEST DEADLINE

At the circle of routes 28 & 11
Alton, NH 03809

Tel. (603) 875-5001
Open year round



River View Motel

Ind. heated & air conditioned rooms
In-room coffee - color TV

Dick and Micki Ford

BRUCE K. JOHNSON
Attorney at Law

(603) 875-6131

Main Street
P. O. Box 817
Alton, N. H. 03809

Curry REALTORS.

"Committed to Service Excellence"

ROUTE 11, BOX 336 - ALTON BAY, NH

*you've seen our sold signs,
call us to list your property*



603-875-6600

AMERICAN CLASSICS AVAILABLE AT LIBRARY

The Library of America series is now available at the Gilman Library through the generosity of the Alton Woman's Club and the Andrew W. Mellon Foundation.

This 60-volume set includes classic American literature by such authors as Henry Adams, Emerson, Hawthorne, Cather, Irving, Twain and Wharton. Each book will have a name plate with the names of the donors.

The Woman's Club disbanded last May after 65 years of service to the community and the \$500 donation for this series was their last donation.

NO SCHOOL TODAY!

You wake up and find it snowed during the night and the roads are iced over! Will there be school today? How do you find out? Call the school? Your teacher? Your bus driver? NO! NO! NO!

You tune your radio to WASR (AM 1420), WLNH (FM 98.3), or WWNH (AM 930) for official school closing announcements.

FILING ENDS FEBRUARY 3 FOR TOWN/SCHOOL POSTS

The deadline to run for office at the Tuesday, March 14, town and school elections is Friday, February 3, in the Town Clerk's Office.

The positions open for filing this year are:

- One Selectman for Three Years
- One Trustee of Trust Funds for Three Years
- One Cemetery Trustee for Three Years
- One Library Trustee for Three Years
- One Water Commissioner for Three Years
- One Fire Ward for Three Years
- Two Planning Board Members for Three Years
- One Planning Board Member for Two Years
- One Planning Board Member for One Year
- Three Budget Committee Members for Three Years

One Budget Committee Member for Two Years
* * * * *

- One School District Moderator for One Year
- One School District Clerk for One Year
- One School District Treasurer for One Year
- Two School Board Members for Three Years

Main Street will carry a complete list of candidates and their statements in the March edition.

Main Street also will sponsor "Meet the Candidates Night" on Wednesday, March 8, at 7:30p.m. in the Recital Room at the Alton Central School. All candidates will be invited to participate and voters are urged to come out and meet them and hear what they have to say. Moderator for the program will be Ted Cole.

SERVISTAR.

(603) 875-3900

ALTON HOME CENTER

HOURS:

Mon.-Sat. 7:30-5:00

P.O. Box 57
Alton, NH 03809

Water Industries, Inc.

Specialists in Pumping Equipment
Route 28 - Alton, NH 03809

Jacuzzi
Flint & Walling
Gorman-Rupp Pumps
Pumps & Systems
Conditioners

Wilden Air Pumps
Sewage Pumps
Drainage Pipe
Plastic Pipe
Office 875-7000



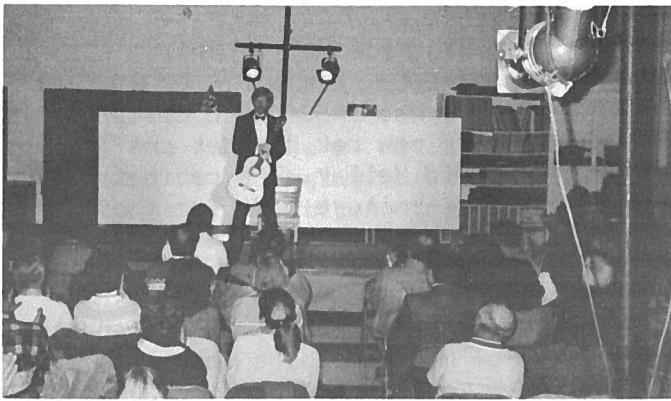
First NH Banks

WOLFEBORO NATIONAL BANK

Alton, N.H.
603-875-7041

Wolfeboro, NH
603-569-1221

TOM LOYND
 PAINTING
Interior / Exterior
Custom Furniture Finishing
(603) 875-5744



CONCERT PERFORMER Christopher Kane at the recent Gilman Concert at the Alton Central School. Future performances include the Dornin-Loring Piano Duo on March 10 and the Freese Brothers Band on May 5. (Photo by John Duffek)

HELP WANTED

Anyone interested in participating in Main Street is encouraged to call Editor John Duffek at 569-4441.

No talent will be turned away! We need reporters for general and feature stories; salespersons to call on prospective advertisers; and collaters, folders and staplers to help put it all together once a month.

DID YOU KNOW THAT..... when Alton was incorporated in 1796 it was a part of Strafford County, but in 1840 it was transferred to the newly incorporated County of Belknap?

FARMINGTON NATIONAL & SAVINGS BANK

BANKING HOURS
 MON. THRU THUR. 9 TO 5
 FRIDAY 9 TO 6
 SAT. MORNING 9 TO NOON

FARMINGTON, N.H.
 TEL. (603) 766-2266

ALTON, N.H.
 TEL. (603) 876-6111
 24 HOUR BANKING

DUNCAN CONTRACTING

"Brings it All Together"

Painting - Remodeling - Structural Repair

Design - Construction - Super Insulation
 Excavation - Septic Systems - Landscaping

IN ALTON **875-7440**

CONCORD CORNER

By Representative Alice S. Ziegler

WORK BEGINS IN CONCORD

After swearing in our new governor and organizing the standing committees, the work of this legislature begins. There have been about 1,000 bills filed. These are being distributed to the appropriate committees for study and hearings that started January 24. Growth and environmental issues seem to have the highest priority thus far.

I was pleased to have been placed on the committee of the my choice -- Health, Human Services, and the Elderly.

On the first Monday of each month, I plan to be at the Alton Town Hall from 4 to 5p.m. By February 6, there will be more information about Concord activities.



"A VIDEO RENTAL LIBRARY"

THE VILLAGE VIDEO

Box 837, Main St.
 Alton, NH 03809

ACROSS FROM THE TOWN HALL

Norm & Terry Gilmore
 Kim Patterson

(603) 875-2233

Simply the Best



ALTON
 P.O. Box 993
 Alton, N.H.
 875-3128



ALTON
 P.O. Box 993
 Alton, N.H.
 875-3128

WATERFRONT

AFFORDABLE - At \$109,000 and this is what you get! - 1.5 acres, 3 bedrooms, 1 1/4 bath, family room, dining room, living room, 2 car garage, plus deeded access to Winnepesaukee - furnished - great second home or first - 1700+ square feet of living space!
SECLUSION - over 200 feet of Lake Winnepesaukee frontage on a very secluded and picturesque shore. 2 bedroom cottage in immaculate condition, breakwater and 2 docks all yours for \$289,500.

RESIDENTIAL

COUNTRY LIVING - in Wolfeboro - 200+ year old Cape just 5 miles from the center of town. Wide pine floors, beamed ceilings, views and so much more in this comfortable 3 bedroom home on 1.3+ acres with barn/garage. Affordably priced for the young or not so young at \$114,000.
NEW DURHAM RIDGE - Well built Gambrel for large family with five bedrooms on 1.6 acres with views of Mt. Washington and the Ossipee Range priced at only \$129,900.

LAND

COMMERCIAL LOT - .43+ acre in the residential/commercial zone of Alton traffic circle \$30,000.
POTENTIAL FOR SUBDIVISION - 16+ acres with 271' on Route 28 in Alton - frontage on the Merrymeeting Marsh - Great for small development. \$105,000.

**WELL CHILD CLINIC
IN WOLFEBORO FEB. 1**

The Visiting Nurse Association of Wolfeboro and Vicinity, in cooperation with the NH Department of Health, will sponsor a Well Child Clinic on Wednesday, February 1, from 9a.m. to noon at the All Saint's Episcopal Church in Wolfeboro.

Immunizations will be available at the clinic to all children of the area to prevent the following diseases: Polio, Diphtheria, Whooping Cough, Tetanus, Measles, German Measles, Mumps, and TB Tine Test.

DID YOU KNOW THAT.....
in 1803, 26 school districts were organized in Alton? The building first used for this purpose was at the corner of Church and School Streets and was erected in 1803. This little red schoolhouse was used for 66 years. It later became a blacksmith shop and burned in 1951. In those early schools the classes were held mostly in the summer.

THE CHECKOUT DESK

By Pat Merrill, Librarian

**OAK CABINET DONATED
FOR VIDEO COLLECTION**

The 207-volume PBS video classics are now housed in new oak cabinet crafted and donated by David Kellar. The cabinet is the third piece of furniture made for the Library by Mr. Kellar and each one seems handsomer than the one before.

ENERGY VIDEO

The Governor's Energy Office and the University of New Hampshire Cooperative Extension have sent the Library a 20-minute video entitled Constructing an Insulated Roman Shade with an accompanying step-by-step instruction manual. This will be of interest to anyone who sews and is interested in making their home more energy efficient. The video can be checked out or viewed at the Library.

STARTING A BUSINESS

A two-volume set, How To Set Up Your Own Small Business, has just been added to the collection. It explains everything about setting up your own business, including market research, sales forecasting, financing, publicity, accounting, selling, personnel management, and much more.

TAX FORMS

The Library has federal and state tax forms that can be copied for 10 cents each.

NEW BOOKS

- The Fool's Progress by Edward Abbey
- Refining Felicity by Marion Chesney
- The Lyre of Orpheus by Robertson Davies
- Spy Hook by Len Deighton
- The Lords of Vaumartin by Cecilia Holland
- Chateau Ella by Hilary Norman
- The Silence Now: New and Uncollected Earlier Poems by May Sarton

WOODSTOVE INFORMATION

Anyone contemplating the installation of a woodstove is urged to contact Fire Department Lieutenant Jack Woodland, 875-2691, for a free consultation on guidelines and safety measures. Lt. Woodland also is available to inspect existing installations.

**EAST ALTON
GENERAL STORE**

**Junction Route 28 & 28A
Alton, NH 875-3113**

GROCERIES-COLD BEVERAGES-HOT COFFEE

MOVIE RENTALS-MEGABUCKS-PROPANE

UHAUL

OPEN 7 DAYS

UHAUL

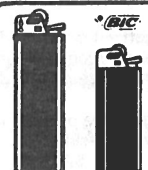
776-3444

A.J. Martin & Sons Concrete Inc.
Foundations • Floors



PO Box 660
Muchado Hill Road
Alton, NH 03809

**ALTON VILLAGE 5 & 10
V & S Variety
Main St., Alton**


41¢ each While Supplies Last
BIC® lighter in regular or compact mini style. Choose asst'd colors. 5x199


1.00 each While Supplies Last
Pot holder in asst'd shapes and patterns. 100% easy-care cotton. 8x8 in. K 8004AS


84¢ While Supplies Last
E-Z Stuff® fiber is 100% polyester, washable. Won't bunch! 12 oz. bag. E2-12

Remember your Sweetheart!

Tuesday - February 14 Valentine's Day!
American Greeting Cards and "School" Valentines!

**While Supplies Last
875-5510**

FUN AND COMPETITION HIGHLIGHT WINTER EVENT

By Debby Eyer

From Monday, February 6, through Friday, February 10, during the last two periods of class, the students of Alton School will be sculpting, challenging their brains, shooting baskets, practicing their performances and having fun. Because that is the time for the Annual Winter Carnival.

All kinds of planning is currently underway to make this year's carnival a success. Some of the planned activities are: brainbowl, a quizzing contest; a tug-of-war; a chess tournament; broomball competition; the foul-shooting contest; and the students' favorite, a lip-synch contest. A snow sculpture contest is also planned, provided the weather cooperates.

To add to the excitement of the week, the basketball teams will play Nute at home beginning at 6:30p.m.

On Saturday, the 11th, a pancake breakfast will be held at the Cafeteria from 7:30 to 9:30a.m. Tickets are sold at the door. After the breakfast, the town broomball competition will be held on the School's playing field. To enter a team or to get more information, call Assistant Principal Dorothy Bristol at 875-7500.

SUBMIT YOUR NEWS

Information may be submitted in writing to Main Street about special events sponsored by Alton organizations, club meetings, and news of interest to the general public.

Send any material to P.O.Box 210, Alton Bay, 03810, by the 15th of each month for the following month's issue.

Main Street reserves the right to limit or edit all material. For additional information, call 569-4441



OFFICERS ELECTED by the Winnepesaukee Lodge #75, F.& A.M. include (Row 1, 1. to r.) Junior Steward Darrell White, Senior Warden Richard Bassett Sr., Worshipful Master Thomas Varney, Junior Warden Arthur Douglas, Secretary William Ryan, (Row 2, 1. to r.) Senior Deacon Tom Reid, Junior Deacon Seldon Aldon, Treasurer Bart Hooper, Chaplain Lawrence Scovill, and Historian George Roberts. Missing from the photo are Marshall Dwight Dobbin, Senior Steward David Hall, Tyler Weston Alden, and Electrician Richard Jones.

DID YOU KNOW THAT..... there are 132 different ways to spell Winnepesaukee, but in 1937 the General Court of the State of New Hampshire legalized the spelling that we know today - Winnepesaukee? Many people believe this name to mean "Smile of the Great Spirit", but if carefully translated it means "Deep Water in a High Place".

Century 21



GOLD COAST

Alton Traffic Circle
P.O. Box 319
Alton Bay, New Hampshire 03810
Business (603) 875-6021
Business (800) 356-6021
Residence (603) 875-3843

PATRICIA E. BRADY
Sales Associate

Each Office is Independently Owned And Operated

GEDNEY ENTERPRISES GENERAL CONTRACTING

PLUS.....

Security Smoke Alarm Systems
Central Vacuums - Stereo Radio Intercom
Property Surveillance Services

FREE ESTIMATES
LICENSED
BONDED

RESIDENTIAL & COMMERCIAL

P.O. Box 783
Alton, N.H. 03809

(603) 875-2138

ALTON PRINTING

Church Street, Alton, N.H.

*Wedding Invitations • Carbonless Forms
Advertising Specialties • Business Cards
Letterheads • Envelopes • Sales Slips
Booklets • Calendars*

875-2197

PLANNING NECESSARY FOR CAPITAL IMPROVEMENTS

The Capital Improvement Plan (CIP) concept, established at the 1987 Town Meeting, is now two years old and functioning as an asset to the community.

The CIP Committee, made up of Alton volunteers, is a subcommittee of the Planning Board and is a planning and management tool that focuses on major public projects, facilities and equipment.

Capital projects are expensive and usually have a life expectancy of several years whereas operational expenses are annual and expended within a fiscal year.

The CIP Committee does not make up the budget, and it has no voting power or regulatory authority. Its function is to help the Selectmen, School Board, and Budget Committee in their consideration of the annual budget in the area of capital improvements by recommending a priority list of capital budget items over a six-year period.

The plan is re-worked every year and updated to reflect the needs of Alton, and adjustments are made to reflect the ever-changing aspects of the community. The ultimate goal of the committee is to identify future needs of the Town and suggest an orderly approach to those needs.

ICE-OUT CONTEST DEADLINE NEARS

It's time to get your entry in for Main Street's Annual Ice-Out Contest.

Ice-Out is defined as that moment when the M/S Mount Washington could navigate its regular route to each of its ports unobstructed by ice. If you come closest to the date, as determined by the official ice-watchers around the Lake, you will win dinner for two at the Edgewood Restaurant.

The earliest date on record is March 8 in 1921 and the latest was May 12 in 1888.

Entries must be postmarked no later than February 28 and participation is limited to Alton residents and subscribers to Main Street. All entries become the property of the Voice of Alton, Inc., publisher of Main Street and the decision of the judges is final.

ENTRY FORM

NAME: _____

ADDRESS: _____

PHONE NUMBER: _____

ICE-OUT WILL OCCUR ON _____ (date)
AT _____ AM or PM (circle one)

Mail this entry to P. O. Box 210, Alton Bay 03810 by February 28, 1989.

SUPPORT WELCOMED

The publication of Main Street is made possible by the Alton businesses who advertise each month. Support these businesses and mention that you saw their ad in Main Street.

Many individual residents have expressed their appreciation for Main Street and have indicated an interest in supporting this activity financially.

We welcome individual support and accept donations sent to Main Street, Post Office Box 210, Alton Bay, NH, 03810



875-3940

Village Stylist
"A FAMILY HAIR CARE CENTER"
MAIN ST., ALTON, NH 03809

Kathy Jones

LAKES REGION LIVING, INC.

- * COMPLETE REAL ESTATE SERVICES
- * BUILDERS OF FINE HOMES
- * MODULAR HOMES
- * EXCAVATORS - SEPTIC SYSTEMS
- * SAND and GRAVEL

OFFICE OPEN 7 DAYS

N.H. TOLL FREE
1-800-635-6051

(603) 875-6051



Route 11, Box 314, Alton Bay, N.H. 03810



BRAD HUNTER
CARPENTER - BUILDER

364-7494

P.O. BOX 538
ALTON, N.H. 03809

**FOCUS ON:
REVEREND DWIGHT MEADER**

By Bob Calvert

A most productive and satisfying 41-year career in the Christian ministry comes to a conclusion with retirement on February 28 for the Reverend Dwight V. Meader of the Alton Community Church. And scores of Alton residents will recall with heartfelt appreciation and loving memories his 19-plus years of devoted service in this community.



The Rev. Dwight V. Meader is a very special person, as is his delightful wife, Lois. Modest and unassuming with a great sense of humor, his talents are many faceted. The Meaders met while students at Gordon College. Lois Makechnie was alphabetically directly in front of the future minister in the diploma line at graduation, and Rev. Meader with a twinkle in his eye suggests "I've been following her ever since!" A Rochester NH farm was home for him. Lois is a native of Cambridge, Massachusetts. Following graduation from Gordon Divinity School, Dwight pastored three small churches in Wales, Mass., where he was ordained. Prior to coming to Alton in late 1969, he served as pastor of the First Baptist Church in Hudson NH. Lois has always seen her role as being "supportive" and involved. And those who know her say she has done it consistently with a touch of class.

The Rev. Meader's service has run well beyond the church. At different times he has, concurrently with his pastoral service, driven a school bus, taught school for seven years in Pelham NH while based in Hudson, and even served as town road agent in the town of Wales! The 1955 hurricane there gave him fits. He has played the trumpet since the 5th grade in concert bands, trios, etc., and used it extensively in his ministry. Here in Alton he has been a working member of the

Volunteer Fire Department as well as its Chaplain. Height has never been a problem for him and he's an experienced "ladderman". He is an active Mason and serves on the boards of the Gilman Home and Alton's Housing for the Elderly.

He and Lois have six grown children and are expecting their tenth grandchild this month. Lois has been involved with choirs as long as she can remember and sang for a while with the Suncook Valley Chorale.

He has the reputation for being a top-flight gardener. And a very special talent lies in the area of construction skills. Something of Alton goes with him to his retirement home in Rochester. The old Congregational Parsonage was dismantled some time ago, and he carefully transported bricks and lumber from this 28-foot home with three chimneys to Rochester and with some help reconstructed what will be their retirement home. He did most of the rough work himself. Under his leadership, many building improvements have been realized here and at all his other churches. An outstanding example was excavating with volunteer labor under the Congregational Church and providing the present church with Sunday school facilities.

Alton will long remember this tireless servant of God and man and his supportive wife, Lois. A builder of lives, and a practical builder of structures, he has been deeply involved in everything good for Alton and its people. All of our lives are enriched by the good fortune of Rev. Meader and Lois being called to Alton on that November day in 1969!



PROMPT
PROFESSIONAL
SERVICE

"THE FUSSY ONE"

JAMES E. MARTIN
PAINTING & VINYL HANGING

ROUTE 11 BOX 296
ALTON BAY, NH 03810

(603) 875-5926

Williamsburg Remembered

Homestead Place, Alton Traffic Circle
Alton, N.H. 03809

CLASSES

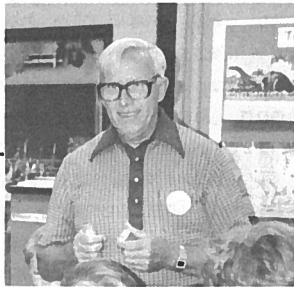
Cut & Pierced Lamp Shades, Decorative Paintings
Multi-Bow Candlerings, Eucalyptus Wreaths, Weave Baskets
Swags, Sewing, Williamsburg Wreaths

Additional Information Call 875-3644

HOURS: Sun. 12-5 Tues.-Sat. 10-5 Closed Monday

**YOUNG ASTRONAUTS NAME
ROLF J. DUTZMANN
TO STATE POST**

The Young Astronaut Council of Washington DC recently announced the appointment of Rolf J. Dutzmann as State Curriculum Coordinator. In this capacity, he will serve as liaison between the Young Astronaut Council and the chapters in New Hampshire. He will assist present and future chapter leaders in establishing and organizing Young Astronaut Chapters statewide as well as publicize the Young Astronaut cause among the general public.



Dutzmann is the founder and advisor of the Young Astronaut Chapter #316, a charter chapter at the Alton Central School and is an active NH School Volunteer.

Individuals or organizations wanting to learn more about the program may contact Dutzmann at 293-8095.

**CLASSIFIED ADS MAY BE
PLACED IN MAIN STREET**

Alton residents may place classified ads in Main Street each month. Ads are limited to non-commercial, private individuals who have items for sale, items wanted, free items, personals, or help wanted notices. The rate is \$1 for each ad.

Space for classified ads is limited and available on a first-come, first-served basis. Main Street reserves the right to refuse any ad.

Ads may be mailed with payment to P.O. Box 210, Alton Bay, 03810. The deadline is the 15th of the preceeding month.

CLASSIFIEDS

FOR SALE

WANTED

OLD BARN LIGHTNING RODS with Globes, Tall - 30" plus, Set if Possible, Call Rich at 859-2989.

FREE

HELP WANTED

REPORTERS and Feature Writers to participate in Main Street, Call 569-4441 evenings.

PERSONALS

DID YOU KNOW THAT.....
almost all early lake traveling was by means of gundalows - primitive craft resembling a large-bottomed barge, having a high triangular sail? There was a steering apparatus at each end as the gundalow could not be turned. One captain took the first half of the trip and a second took the return voyage. It ran regularly between Alton Bay, Meredith and Lake Village (now Lakeport). The gundalows became obsolete about 1840 when the first horseboat was introduced by a Mr. Potter of Manchester, its inventor. The horseboat was a combination of scow, team and treadmill. These boats traveled from Meredith to Alton Bay to where Griffin's Bridge crosses Merrymeeting River which was an excellent turning place and landing place.

EMPTY DESK

We have one desk available for a Real Estate Salesperson of the right calibre. No Experience necessary. We provide continuous training. Must be willing to work full time. We furnish sales aids, referrals, leads, bonus plan and pleasant office facilities. For a confidential interview call Bill Ryan.

**RYAN & BODINE
BETTER HOMES & GARDENS
ALTON, N.H. 875-2525**

Alton Bay Busy Corner Store



Rte. 11, Alton Bay
June & David Howell
603-875-3070

*Valentine Cards & Gifts
for Everyone*

*Month of February - 10% discount on
gifts for Alton & Alton Bay Residents*



**ALTON
CHIMNEY SERVICE**
RFD 1, Box 56-B
Alton, N.H. 03809
875-3674

MASONRY REPAIRS
CHIMNEY CLEANING
SAFETY INSPECTIONS
STOVE INSTALLATIONS
ESTIMATES AND
INSPECTIONS FOR RELINING

CERTIFIED BY THE NATIONAL CHIMNEY SWEEP GUILD
CERTIFIED SOLID FUEL SAFETY TECHNICIAN

Weddings • Family Reunions • Portraits
Musicians Demo Tapes • Stereo High Fi
Insurance Inventories • Real Estate

**YOU OUGHT TO BE
IN PICTURES**

Video and 35MM

EARLE W. COVELL
Box 81
Alton Bay, NH 03810

APR 1988 11 3700P
875-6284

(603) 875-6284

HAPPY HOBBY DOLL CLUB PLANS FEBRUARY FUNTIME

The Happy Hobby Doll Club has planned a February Funtime Exhibit and Sale to brighten up the days of February and combat the bleakness of cabin fever. The event takes place on Saturday, February 18, from 11a.m. to 3:30p.m. in the Alton Bay Community House. Snow dates are Sunday, February 19 and Saturday, February 25.

There will be tables of dolls and doll-related items for sale, five exhibit tables with a program presentation on each exhibit. Exhibits will include "From the Kiln", "Paperdolls", "Dolls of Wood", "Celebrity Dolls", and "The Vogue Family of Dolls". Box lunches will be on sale on a first come, first serve basis beginning at noon.

The regular monthly meeting of the Happy Hobby Doll Club takes place on Friday, February 24 at 7p.m. in the Community House. The program will be a slide show from the United Federation of Doll Clubs.

Call Ruth Messier at 875-6750 for additional information.

RETIREMENT RECEPTION FOR THE MEADERS

Church members and community friends and organizations will pay tribute to retiring Reverend Dwight V. Meader, pastor of the Community Church, and his wife, Lois, on Sunday, February 26, at 3p.m. at the Congregational Meeting House.

The Women's Christian Fellowship will host the event. Reverend Meader will retire on February 28 after nearly 20 years of service here.



OIL & GAS SYSTEMS

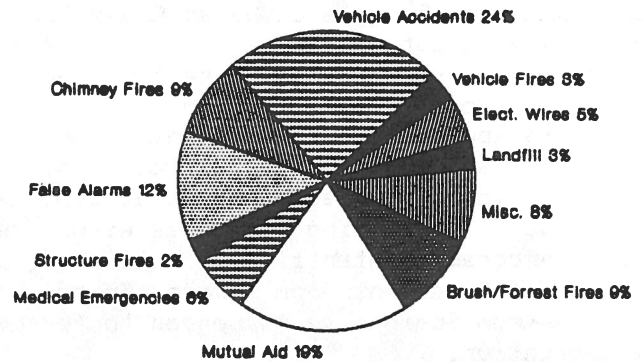
Dick Quindley & Sons

HEATING SERVICE
COMPLETE SYSTEMS - REPAIRS

EMERGENCY SERVICE
875-2910

AVERY HILL ROAD
ALTON, N.H. 03809

ALTON FIRE DEPT. 1988 Responses



1988 was a busy year for the Alton Fire Department. There was a near-record 161 alarms from November 16, 1987, through November 15, 1988. The chart above shows the number of alarms, as a percentage of the total, in each of the eleven categories. If alarms continue at their current rate, last year's total will be surpassed sometime in September. As of January 10, there have been 13 more alarms responded to than at the same date last year. (Statistics and Chart by Charles Adams Jr., Fire Department Clerk)

LP GAS · FUEL OIL · MOBIL LUBRICANTS · HEATING SYSTEMS



FERN'S Energy Centers

Main St.
Alton, NH 03809

875-3500
1-800-852-3366
Service & Operations

Country Bonnet

· CHILDREN'S CLOTHING ·
· QUILTS · WREATHS



RT 285

ALTON

SCHEDULE SET FOR SCHOOL REUNION

Representatives from Alton High School classes (1915-1964) met recently to make final plans for the gala combined Class Reunion to be held Saturday, July 29, in the Alton School. Marilyn Dame and Robert Witham are co-chairpersons of the planning group.

This special event will begin with registration and tours of the School from 3 to 5p.m. followed by a social hour at 5:30 and dinner at 7. The evening concludes with a reunion program, entertainment and dancing.

Over 400 alumni from across the country and one from Spain have responded to letters of invitation.

Deadline for tickets is March 27 and no tickets will be sold at the door. For further information, call Dame at 875-2211 or Witham at 859-4122.



DO YOU REMEMBER..... an ice house at Alton Bay? Oliver Barnes is shown on the left and Clarence Barnes is on the ramp. (Photo from Alton: A Town to Remember)

MAIN STREET AVAILABLE BY SUBSCRIPTION

Main Street is mailed to all Alton residents free of charge by third-class mail.

Because of its third-class status, Main Street may not be forwarded to those away from home for a period of time. However, anyone who wants to receive this publication year-round with first-class delivery may do so by subscribing to Main Street for \$5 per year. This will insure receiving twelve issues of Main Street mailed to your address.

Subscription requests should be sent to Main Street, P.O. Box 210, Alton Bay, NH, 03810. Include your name and mailing address and a \$5 check payable to Voice of Alton.

MAILING LIST

Main Street is distributed free to all residents of Alton. Each postal patron with the Zip Code 03809 or 03810 should receive a copy automatically.

If your mailing address has a different Zip Code than either of those and you are an Alton resident, you may receive Main Street each month by calling 569-4441 or send your mailing address to P. O. Box 210, Alton Bay NH 03810.

Spring Haven Paper Hangers
Quality Residential Wallpapering
and Stenciling
(603) 293-0823

DENISE TERRAVECHIA RFD 4, Box 221G, Laconia, NH



ALTON COUNTRY SUPPLY
875-3241

MAIN STREET

ALTON, NH 03809



Main Street

Bulk Rate
U.S. Postage
PAID
Permit No 2
Alton Bay, N.H. 03810

CAR - RT SORT
POSTAL CUSTOMER