



Main Street

Volume IX Number 5

May, 1993

Alton, New Hampshire



TOWN PLANNER GLEN McLEAN CONCLUDES ALTON SERVICE

Almost four years to the day that he began his service here, Town Planner Glen McLean resigned to consider new challenges in his ongoing professional career.

He came here on April 25, 1989 from his role as a regional planner with the Lakes Region Planning Commission. Town officials feel that he has accomplished a great deal here both in working with the Planning Board and in the many special town projects he has guided to successful conclusion.

At his departure, McLean expressed sincere appreciation to the many with whom he has worked here and for the great sense of satisfaction in the combined "efforts to have maintained and enhanced a rural lifestyle which many municipalities are otherwise losing."

TOWN CLERK: DOG LICENSES DUE AND VEHICLE REGISTRATIONS UP-DATE

Dog licenses were due April 30. Dogs not licensed by June 1 will be charged an additional forfeit of \$15 and a fine of \$1 per month in accordance with RSA 466.13. A valid rabies certificate must be presented before a license can be issued.

Beginning early this month, the Town Clerk's Office expects to have the motor vehicle registration package running on its computer. The new system will provide a quicker and more accurate means of processing renewals, transfers or new vehicles.

MEMORIAL DAY OBSERVANCES PLANNED FOR SUNDAY, MAY 30

By Lori Durkee

Alton's Memorial Day Parade will be Sunday, May 30, starting at the American Legion Hall. All participants are asked to be at the Legion Hall by 1:30p.m. At 2p.m., Monsignor Leo Hines will give the invocation.

Richard Frohock, Legionnaire of the Year, will begin the march to Riverside Cemetery as the parade's grand marshal, followed by Aida Downing, grand marshal for the Legion Auxiliary.

The rest of the marchers are the members of American Legion Post #72 and color guard, American Legion Auxiliary Unit #72 and color guard, Sons of the American Legion and color guard, Board of Selectmen, School Board, School Band, State Senators and Representatives, Veterans of Foreign Wars color guard, Knights of Columbus color guard, Police Department, Fire Department, Cub Scout Pack 53 and color guard, Brownies, school children, and anyone else wanting to participate.

At the Riverside Cemetery, Dr. Peter Roussaki, pastor of the Alton Community Church, will lead in prayer, followed by a recitation of "In Flanders Fields", decorating of the graves, a presentation of the "Veterans' Prayer", a gun salute to the dead and the playing of taps.

The parade returns to Monument Square for the Memorial Day speaker, musical selections, and the laying of wreaths at the Civil War monument by Ruth Fifield, the World War I tablet by Aida Downing, the World War II monument by Mildred Pierce, the Korean War tablet by Mary Murray, and the Vietnam monument by Julie Lamper.

The Gettysburg Address will be recited; Archie Thibeault, commander of VFW #11163, will give a speech; and Muriel Stinson will present the Auxiliary Memorial Reading.

The Arrangements Committee for this year's observance includes Ruth and Jerry Fifield, Archie Thibeault, and Jerry Steimle.

DEADLINE NEAR FOR SUMMER EVENT LISTING

All organizations sponsoring community events between May 31 and December 31 are asked to submit information about the event to the Alton/Alton Bay Chamber of Commerce before Saturday, May 15.

Please include the day, date, time, name of event, location, sponsor, contact person, and phone. Send the information to Post Office Box 550, Alton 03809, or drop it off at the Alton Village 5 & 10 or Alton Bay Busy Corner Store.

Main Street

Published Monthly Since 1985 by
Voice of Alton, Inc., A Non-Profit Organization
P. O. Box 210, Alton Bay NH 03810

Editor John Duffek
Assistant Editor Robert Boyce
Business Manager Jeanne Cole
Advertising Manager A.R. Van de Meulebroecke
Circulation Manager Robert Smith
Staff Paulette Alden, Rose and George Bornheim, Catherine
and Bob Calvert, Ted Cole, Phyllis and Stephen Connelly, Daryl
Czech, Lori Durkee, Barbara Ingoldsby, Lynda Plunkett, Lisa
Racine, Jean Roberts, Gertrude and Gerald Row, Linda Ann
Smith, Nancy Thomas, Connie Van de Meulebroecke, Tammy
Murtagh, Frances and James Washburn

Printed by Alton Printing Company
on 100% Recycled Paper
Average Circulation 2,500

Phones: Editorial 875-7300 Advertising 875-5702
Subscriptions are available to receive Main Street
by first class mail at \$7.50 for 12 issues

USE OF JONES FIELD SCHEDULED BY RECREATION DEPARTMENT

All scheduling for the use of Jones Field is done through
the Parks and Recreation Department. If you are interested
in using the field for recreational purposes, please contact
the Department for available dates at 875-2161.

ALTON BAY HEAVY RIGGING

*We offer 25 years of honest,
dependable experience. We lift
cottages, homes, and barns for
foundations and sill work.*

Dan Wright

875-6771

Blue Seal and New Durham General WE KNOW ANIMALS

We take pride in
helping our customers
care for their animals.
You can count on us for
management and feeding
advice, and, of
course, high
quality feed.
That's why we
sell Blue Seal.



25lbs.
Dog Krunchies
only \$7.52

25lbs. Bunny 16 Pellets only \$4.04



THE GENERAL STORE

Blue Seal Feeds
3 Old Bay Rd. New Durham, NH
859-5400
Mon - Fri 6 AM - 9 PM
Sat & Sun 7 AM - 9 PM

THE CHECKOUT DESK

By Pat Merrill, Librarian

BOOKS! BOOKS! BOOKS!

They are everywhere and on almost every subject. A
display of books concerning gardening tasks for spring is
featured in the front hall. In the window of the children's
room will be a display of books about parenting -- help for
parents of children ages 3 months to 12 years; books about
stepfamilies, "new" American family; Best of the Best For
Children (books, magazines, videos, audio, software, toys,
travel and more! Come and peruse.

HAVE YOU READ.....

- Forward the Foundation by Isaac Asimov
- Mrs. Pargeter's Pound of Flesh by Simon Brett
- Miss Tonka Turns to Crime by Marion Chesney
- Domes of Fire by David Eddings
- Praetorian by Thomas Gifford
- Lieberman's Choices by Stuart Kaminsky
- A River Runs Through It by Norman MacLean
- Farrier's Lane by Anne Perry
- The Holy Thief by Elis Peters
- Clover by Dori Sanders
- McNally's Risk by Lawrence Sanders
- Bless The Child by Cathy Cash Spellman
- Captain Monsoon by Victor Suthren
- The Oracle at Stoneleigh Court by Peter Taylor
- Don't Ask by Donald Westlake
- Everyone's Guide to the Law by Melvin Belli
- Making Peace in Your Stepfamily by Harold Bloomfield
- The College Board Guide to 150 Colleges
- Winning Money For College by Alan Deutschman
- The Spirit of Community: Rights, Responsibilities and the
Communitarian Agenda by Amital Etzioni
- The Power of Place by Winifred Gallagher
- Teaching Children Values by Linda Eyre
- Preparing For the 21st Century by Paul Kennedy

CLASS OF 1993 SPAGHETTI SUPPER

The senior class at Alton Central School will sponsor a
Spaghetti Supper on Saturday, May 8, from 5 to 8p.m. at the
Sandy Point Restaurant.

The cost of the dinner will be \$5 for adults and \$3.50
for children and senior citizens. Proceeds will be used
towards their chemical-free class trip to New York City.

ALL ABOUT ALTON: In 1804, 15 schools were scattered in and
around Alton.

THE Country Lilac

Hanging Plants - Clay Pottery
Geraniums - Annuals
Vegetable & Herb Plants
Perennials

**Nicest Selection in
The Lakes Region**

Route 11, West Alton
Near The William Tell Inn



OPEN 7 DAYS 9 to 6

NATIONAL EXERCISE PROGRAM OFFERED TO ALTON RESIDENTS

Alton residents are lacing up their exercise shoes to participate in "Healthy Strides", a national walking and exercise program sponsored by the Parks and Recreation Department in conjunction with the California Prune Board and the National Parks and Recreation Association.

Healthy Strides is designed to promote fun, fitness, and healthy eating. Alton is one of up to 1000 park and recreation agencies nationwide kicking off a community Healthy Strides exercise program this year.

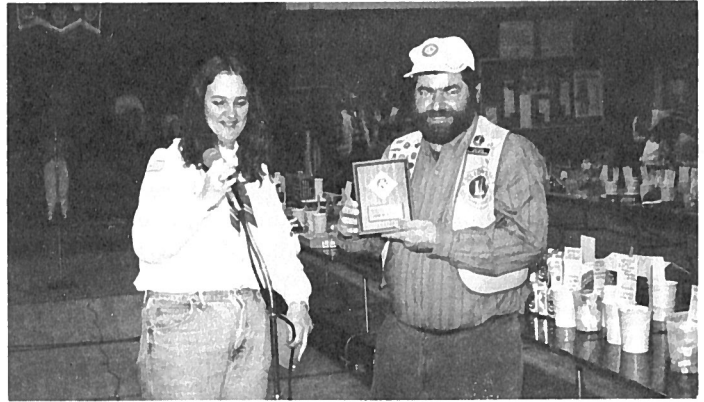
To participate, all you have to do is exercise and keep track of your exercise activities for 14 weeks, from June 1 to September 3. All participants will receive a certificate in recognition of their achievement, samples of California prunes, buttons, exercise cards and fitness brochures. All participants will be entered in a drawing and four winners from each category will receive an Alton Parks and Recreation T-Shirt.

For more detailed program information and to register for this activity contact the Department in Town Hall at 875-2161.

Everyone is encouraged to participate. There are many activities from bowling to dancing to canoeing to walking that you do every day that promote fitness and you may not even realize it. Let us get you started in a routine that will promote a healthy lifestyle with a little exercise in your life.

EARTH CARE

Lawn care products laced with pesticides and herbicides may yield more verdant turf, but their use kills songbirds. It's a trade-off most of us wouldn't want to make. Pull up weeds and introduce carnivorous insects like the green lacewing instead.



CUBS HONOR LIONS

Debbie Burton, cubmaster of Pack 53, presents an award recognizing the contributions of the Lions Club to Scouting. Gary Noyes, president of the Alton-New Durham Lions Club, accepts the award at the opening on the recent Penny Sale.

Alton Funeral Home

School Street
Alton, N.H. 03809
(603) 875-3311

QUESTION: How can you get \$6.00 worth of **GAS FREE** and help the **ALTON YOUTH BASEBALL PROGRAM?**

ANSWER: Come to **WAYSIDE** and sign up for a new **CITGO GAS CREDIT CARD**. When your application is approved, **CITGO** will send you free gas coupons worth \$6.00, and **WAYSIDE** will donate \$2.50 to the **ALTON YOUTH BASEBALL PROGRAM** as a **SPECIAL BONUS**

The one stop store for all your needs!

**WAYSIDE GROCERY
AT THE
ALTON CIRCLE**

(603) 875-2861



Fresh Meats • Fishing Supplies
Deli • Vegetables • Gas

Bakery • Videos
Fishing & Hunting Licenses

Fishing Tackle
Live Bait
Smelt - Shiners

COMMUNITY SEMINAR ON PARENTING PRESENTS FINAL SPEAKER

Sexuality Education Consultant Chuck Rhoades will present "Changing Times: Parenting the Early Adolescent" on Thursday, May 6, at 6:30p.m.

The seminar is the last of a series of three community seminars on Growing Happy and Healthy Families presented by the Alton PTCO and the Appalachian Mountain Teen Project.

Participants will receive up-to-date information about early adolescent sexual development, with the primary goal being to help children adjust to the physical and emotional changes of puberty.

The program is free and open to the public. Child care and refreshments will be provided.

SPECIAL EDUCATION TEACHER RECEIVES STATE HONORS

Carol Dadura-Fuller was recently recognized as a finalist for the New Hampshire Special Education Teacher of the Year. She is the preschool to grade four Resource Room teacher at Alton Central School

Fuller was presented with a plaque at the Council for Exceptional Children's Annual Conference last month. Special educators from across the state attended this conference to honor their fellow teachers.

ALTON OFFICE SERVICES

Bookkeeping
Photocopies
Typing
Fax

Main Street

875-7300

HOW DOES YOUR HOME COMPARE?



Pine Point Rd.
Sold: 10/5/92

New Durham
\$113,750

144 Days on the market
Rooms: 4 Bedrooms: 2 Baths: 1/2
Age: 25 Yrs Sq. Ft: 720 Foundation: Piers
Heat: Wood Water: Dug Well Fin: Owner
Listing Agency: Ryan & Toman
Selling Agency: Ryan & Toman

Ryan & Toman REALTORS® **Better Homes and Gardens**
875-2525

SCHOLARSHIPS AVAILABLE TO COLLEGE STUDENTS

There are a number of scholarships available to college students who are graduates of Alton. They require completion of at least one year of college.

The Norwich Barbershoppers Scholarship is available to a student in music. A statement of need and activities is required.

The Daniel Francis Memorial Fund Scholarship is presented to a graduate of Alton after two years of college who has maintained a B-C average and has participated in sports.

The John Laurence Bucher Scholarship also requires two years of college with a major in English, theater, liberal arts, music, art, or education. A cumulative average of 3.0 is required.

The American Legion Auxiliary Scholarship is presented to a student after completion of the first semester of the sophomore year based on scholastic achievement, desire for further education, and need.

The Merrymeeting Grange Scholarship is available to graduates who have completed their first year of college and are enrolled in a four-year college.

For further information, call the Guidance Office at Alton Central School at 875-7500.

AIR POLLUTION

By Jodi Fisichelli

Today the air is so polluted in some places that it's not always safe to breathe. Polluted air is not only bad for people and animals, but it's bad for trees and other plants as well.



WEDDING INVITATIONS

Announce the happy news with fashionable Birchcraft Wedding Invitations. Choose from our selection of beautiful styles.

Alton Printing
Company

(603) 875-2197
Church Street, Alton, NH

The Olde Homestead Restaurant

Under New Management

*Come See Our New Look
by attending Our 1st*

Mother's Day Brunch Buffet

8 am - 12 noon Adults \$5.95 Children \$3.50 under 12

Full
Menu Available

Special Dinner Menu
Pot Roast or Turkey,
mashed potatoe
broccoli augratin
salad and roll. **\$6.95**

Now also
OPEN 7 DAYS
5:30 - 8:00 pm
beginning May 1st

875-3789

RESIDENTS SOUGHT FOR FIVE NEW COMMITTEES

The Alton Board of Selectmen has voted to form the following new committees:

HEALTH COMMITTEE - An advisory body appointed to review town and state health regulations, propose new regulations concerning safe food sales and drinking water, and to study health issues which may arise due to the closing of the Town Landfill.

CABLE TV ADVISORY BOARD - Appointed to investigate opportunities for a local access channel, review the current cable tv contract to ensure compliance with contract terms and FCC regulations, gather information regarding other communities' contracts, and review the means for requiring expansion of the system.

HUMAN RESOURCES - Appointed to compile a list of residents who are willing to share their expertise and experience as a resource to the town.

PRIVATIZATION COMMITTEE - Appointed to study the advantages and disadvantages of privatizing the Highway Department and Transfer Station.

TOWN BUILDING COMMITTEE - Appointed to examine town buildings and make recommendations to the Selectmen for long-term and short-term maintenance, safety and code issues, colors and accessibility.

Each committee shall consist of registered voters, ranging from three to five members, with terms ranging from one to three years. Anyone interested in serving on one of these committees or any other existing town board or committee should contact Pat Rockwood, town secretary, at 875-2161.

There are currently openings on the Conservation Commission, Parks and Recreation Committee, Zoning Board of Adjustment, and Water Commission.

ALL ABOUT ALTON: Our first Town Meeting was held on Prospect Mountain at Timothy Davis' home. Today only the cellar hole remains to mark the spot.



TREASURE SEEKERS IN ALTON

The First Annual Easter Egg Hunt sponsored by the Parks and Recreation Department brought many youngsters to look for hidden treasures hidden in Town Hall. The best decorated container contest had over 25 entries and first prize went to Cody DiGiovanni, age 5, who entered a bunny basket.

Brook & Bridle Summer Homes

*On Lake Winnepesaukee
Roberts Cove Road
ALTON, NEW HAMPSHIRE*



RENTAL INFORMATION & RESERVATIONS
WRITE OR CALL

BONNIE DUNBAR JOSEPH
P.O. BOX 270
WOLFEBORO, N.H. 03894

(603) 569-2707

THE BAY CHURCH

(Advent Christian)

WORSHIP - 11 AM
WED. - 7 PM

*Now Worshipping at
Moore Chapel on
Alton Bay Christian
Conference Center*

H.W. BROWN & ASSOC.
ACCOUNTING & TAX PROFESSIONALS

Conveniently Located Main St. in Alton
(Across from Farmington National Bank)

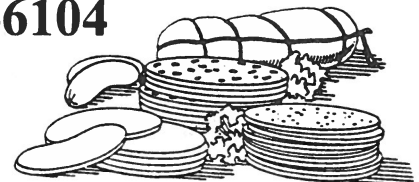
875-3466



CALL FOR AN APPOINTMENT

McGrath Food Center

OPEN:
Mon - Sat 8-7
Sun 8-5
Tel. 875-6104



*The McGrath family is glad to be back
serving all your Grocery Needs.*

BI-CENTENNIAL FOCUS

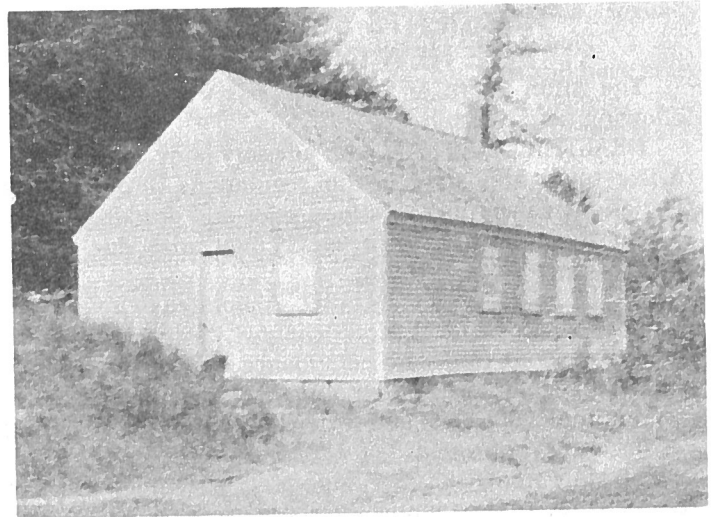
By Jean Roberts

LEVEY PARK: UNDER-USED AND UNDER-RATED

Levey Park on Route 11 between Alton and Alton Bay is one of Alton's most under-used and under-rated areas. We may not even notice the fenced-off picnic area and the bronze marker on a stone as we pass. The marker tells us that the park was a gift in memory of William Charlesworth Levey, a noted ornithologist and a passionate lover of nature. But the park is more than the fenced-in area.

In 1922, Mrs. William Levey, a summer resident, and other interested citizens arranged to purchase a portion of the Lafayette Woodman farm and the timber thereon to preserve the land and trees as a park in memory of her son, William Charlesworth Levey. The sum of \$4,200 was raised by the townspeople in various ways: a donation from the Society for the Protection of New Hampshire Forests; the sale of two violins belonging to Mrs. Levey; a lawn fete, vaudeville and moving picture shows, whist parties and dances; and a concert by noted tenor Arthur Hackett.

The Town Meeting of March 1924 accepted the deed and agreed to the memorial. The deed states that "the Town of Alton shall hold said premises as a public park forever" (with restrictions on timber cutting) and "the Selectmen



shall appoint three park commissioners (at least one to be a summer resident) to have the care and supervision of the property." The northeast corner lot, on which stood the old Alton Bay school (see picture courtesy of Phyllis Draper) and a section of the Perley Barr farm on the southeast side (for a right of way) were purchased in 1926.

The school house was removed and the stone foundation was kept to define the "rest-a-while" area. A pump for drinking water, a fireplace and rustic benches were provided for many years. Today picnic tables are placed there by the town and there is a fountain and faucet for drinking water but the fireplace is gone. Granite blocks provide steps and iron posts still remain, which had rope linking them together to help walkers climb the steep trails to the top. Swings used to hang from the high tree branches for the enjoyment of all.

The original trees were mostly large Norway Pines and almost all of them were destroyed in the hurricane of 1938. Only a few Norway Pines remain in the low area along the river. Also on the river side of the park, there is a large

LP GAS - FUEL OIL - MOBIL LUBRICANTS - HEATING SYSTEMS



FERNS ENERGY

CONCORD • 200 No.State St. • Box 491 • 03301
ALTON • Main St. • Box 446 • 03809
FRANKLIN • 221 So Main St. • Box 200 • 03235

875-3500
1-800-852-3366
Service & Operations

HILLCREST MARINE, INC.

AT. 28A ALTON BAY, NH 03810

- Mechanical Repairs
- Tune Ups
- Oil Changes
- Boat Registration
- Fiberglass Repairs
- Boat Brokerage
- Canvas Work
- Summer Storage
- Free Estimates



Call for Details or Stop By.

875-5700



natural amphitheater, or "bowl", capable of seating several hundred people. This bowl was probably the site of meetings of Indian tribes who could come in by water from all parts of central New Hampshire.

The acquisition and preservation of this beautiful park was due largely to the foresight and hard work of Mrs. William Levey and Mrs. Alta McDuffee, a prominent citizen of Alton and an active member of the Alton Garden Club in the 1930's, 40's and 50's. I am indebted for this information to articles written by Mrs. McDuffee (now deceased) and to Richard Downing, who was a Park Trustee in the early 1950's and who updated those articles for the Alton Historical Society.

(This series of articles, called Bi-Centennial Focus, began in the March issue of Main Street with a story about the plans of the Bi-Centennial Committee by Paul Kneeland. In April, Nina Liedtke described Alton's path to incorporation.)

CO-ED SOFTBALL LEAGUE FORMING

The Parks and Recreation Department is coordinating an Adult Co-Ed Softball League for participants 16 years and older. Games will be held on Tuesdays, Wednesdays and Thursdays beginning at 6p.m. from June 15 until August 31.

If you are interested in entering a team or joining one, you may contact the Department before the deadline on Friday, May 28. Schedules will be available after June 7.

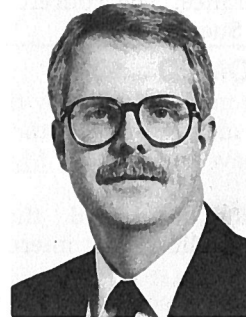
50/50 RAFFLE FOR OLD HOME WEEK

The Old Home Week Committee is sponsoring a 50/50 raffle to benefit the annual summer event. The drawings will be held on the 15th of each month from May through August. Tickets may be purchased from area businesses, at the Parks and Recreation Department, and other locations.



LIONS ELECT OFFICERS

Edmund Brown was recently elected president of the Alton-New Durham Lions Club for 1993-94. Ricky Rines will be vice-president; John Duffek, secretary; Eldon Swim, treasurer; John Racine, lion tamer; and Gary Noyes, tail twister and immediate past president.



Dr. Mark Crosser

Auto Accident? Headache?
Back Pain? Sciatica?
**CROSSER FAMILY
CHIROPRACTIC
OFFICE**

Rivers Bend Professional Building
Call 875-3838
in Alton TUES & THURS

Brenda MacKay

(603) 875-5329



Custom Sewing and Alterations Crafts and More

"You sow your oats...while I sew your clothes"

Main Street

Alton, N.H.



Senior Pictures

Environmental senior pictures - location of your choice or ours for a casual, relaxed atmosphere.

A minimal sitting fee will be charged **BUT** you keep the proofs.

Please call for more information or an appointment

Earle and Judy Covell Alton Bay, NH 875-6284

FREE HEARING TESTS

Computer Analysis and Expert Repairs - All Makes

Second Opinions

Walk-In Hours
Other Times
By Appointment

875-6059

or Residence
875-2920

Robert I. Williams - Registered Hearing Aid Disp.

HIGHEST QUALITY - BEST PRICES - FAST SERVICE

30 Day Refund on all New Aids if not satisfied.

Ask to see the New Tiny STARKEY Secretear®

FREE HOME VISITS

CARNEY DRUG • 10AM-1PM Wed
32 North Main St., Rochester, NH 332-2132

HALL'S PHARMACY • 10AM-1PM Mon
Opposite Post Office, Wolfeboro, NH 569-2374

MEDICINE SHOPPE • 10AM-1PM Fri
801 Islington St., Portsmouth, NH 433-5808



ALTON VILLAGE 5 & 10
V & S Variety
Main St., Alton

Mother's Day -
cards & gifts

For Mom

With Love and Thanks!

875-5510

SPRING FLING AND MUSICAL SCHEDULED AT ALTON SCHOOL

The Annual Spring Fling and Elementary Spring Musical will be held Thursday, May 13 at Alton Central School.

Student organizations and classes will sponsor tables at the Spring Fling from 4 to 6:30p.m. at which food and crafts will be offered for sale.

Following this at 7p.m. the elementary students will present "Alton Salutes Disney" featuring students in kindergarten through fifth grade and guest appearances by many "special" characters. Scenes will be performed from "Snow White and the Seven Dwarfs", "Aladdin", "Mary Poppins", and "Cinderella". "Mickey Mice" and the "Siamese Cats" will also be making an appearance. The concert is under the direction of music teacher Sue Long.

SUPPORT WELCOMED

The publication of Main Street is made possible by the Alton businesses who advertise each month. Support these businesses and mention that you saw their ad in Main Street.

Many individual residents have expressed their appreciation for Main Street and have indicated an interest in supporting this activity financially.

We welcome individual support and accept donations sent to Main Street, P. O. Box 210, Alton Bay NH 03810.

ALTON FIRE DEPARTMENT NOTES NATIONAL SMOKE ALARM RECALL

The Alton Fire Department calls attention to a recent announcement from the Consumer Product Safety Division recalling six brands of battery-powered smoke detectors due to the fact that they may not operate properly in the event of a fire.

Consumers who purchased smoke detectors after July 10, 1992, are being asked to check the unit immediately to see if it is one of the following:

Black & Decker Slim Line SMK100-200-300

Jameson Home Products, Code 1 2000 Model A,C,D.

Walter

Kidde Portable Equipment, Kidde Smoke and Fire Alarms KSA 700

Safety First, Baby's Room and Smoke and Fire Alarm, 244

Funtech, Safety's Sake Model A

Maple Chase, Firex Model A & B

Owners of Black & Decker units should call 800-952-

1331. Owners of other brands should call 800-492-4949.

EMS WEEK CELEBRATED BY ALTON VOLUNTEER AMBULANCE

Emergency Medical Service Week, May 23-29, will be noted by the Alton Volunteer Ambulance Service during an Open House Saturday, May 29, from 10a.m. to 2p.m. at the ambulance building on Route 11.

Tours of the facility and equipment, blood pressure checks and refreshments will highlight the occasion.

Did you ever notice that the horn of plenty is usually on the car right behind you?

Happy Mother's Day



DOCKSIDE RESTAURANT

Rt. 28-A Alton Bay

875-2110

Serving
Mother's Day
Dinner
11:30 - 3 pm
May 9th

Reservations Suggested

Simply the Best



Bob Buchanan
Charles Lapointe
David Countway

Judy Bagley
Al Gengras

BUCHANAN ASSOCIATES, INC.
Main Street, Alton, N.H. 03809

Call: 875-3128

Fax: 875-6378

***** Residential *****
Stockbridge Corner Rd. 6+ Rm. Cape on 5 acres, new home ready for you to complete. Buy now! \$89,900
Route 11-Rollins Hill 5 Rm, close to town, Colonial. House needs work River frontage. Good Price \$59,900
Old Wolfeboro Rd/Route 28 7+/- Rm, New Englander on 13.5 Ac. Barns and pool. Commercial zone! \$199,900
Fort Point Rd. 6 Rm, Ranch on level acre lot. 3 BR and a 2-car garage! Surrounded by stone walls. \$92,900
East Alton Area/New Durham Town line, Contemporary on 20 acres, Mt Views. 2300 sq. ft. Superb! \$265,000

***** Land Specials *****
Route 140 38 Ac. w 1717' frontage South Exp Wooded/Private \$55,000
Rines Road, East Alton 73 Ac. Abuts Knights Pond Conservation \$95,500
Route 140 130 Ac. level timberland 6 Ac. infield. Agriculture! \$65,000
Route 28 1.52 Ac. lot w 231' frontage. Good building spot! \$13,700
Baxter Park 200' on Merrymeeting R Point of land, deep water! \$23,000
Places Point Hills Pond waterfront lot. Lake & Mtn. Views! \$55,000
Merrymeeting Lake Rd 16 Ac Prime building lot. Water Views! \$35,500

We are ready to give you the best real estate services. Stop today and see our comfortable new office in the heart of downtown Alton, next to the Community Church on Main Street. Ask for a free Market Analysis.



FARMINGTON NATIONAL BANK

ALTON
875.6111

Alton Banking Hours

Monday - Thursday 9am-5pm

Friday 9am-6pm

Saturday 9am-12pm

FARMINGTON
755.2255

WOLFEBORO
569.8999

XPRESS
24.



MELVIN VILLAGE
544-2104



TUXEDOS Rentals & Sales

Weddings or Proms
OVER 95 STYLES

"I Do"

Alton Traffic Circle
(603) 875-4848

MAIN STREET INFORMATION CENTER

Schedules

May Events

CHURCHES:

Advent Christian Church - Sunday 11:00a.m. and 6:00p.m., Pastor Dr. Warren Harris
 Baha'i Fireside - Wednesday 8p.m., Holway Residence, 859-5191
 Community Church - Worship at the Baptist Meeting House, 11a.m. in May, 10a.m. in June through August, 11a.m. in September, Dr. Peter E. Roussaki, Pastor, 875-5561
 Cornerstone Bible Church - Sunday 9:30a.m. & 6p.m., Sunday School 11a.m., Pastor Scott Button, 875-2865
 First Free Will Baptist Church - Sunday School 9:45a.m., Church 11a.m., Evening Service 6p.m., Wednesday Prayer Meeting 7p.m., Depot St., New Durham, Pastor James Nason
 St. Joan of Arc - Saturday 5p.m., Sunday 8 & 11a.m., Msgr. Leo F. Hines

COMMUNITY ACTION PROGRAM:

Monday & Friday 1 to 3p.m., Wednesday 9a.m. to 3p.m., Alton Bay Community House, 875-7102

GILMAN LIBRARY:

Monday & Wednesday Noon to 8p.m., Friday 9a.m. to 5p.m., Saturday 9a.m. to Noon

TOWN HALL:

Selectman's Office, Tax Collector, Town Administrator, Town Clerk, and Welfare Officer - 8:30a.m. to 4:30p.m.
 Board of Selectmen - 1st and 3rd Monday, 7p.m.; 2nd and 4th Monday, 9a.m.
 Planning Board - Monday, Tuesday, Thursday, Friday 8:30a.m. to 3:30p.m., Wednesday 1 to 3:30p.m., Meetings with Planner by Appointment, Closed Noon to 1p.m.
 Building Inspector - Monday - Thursday, 8:30a.m. - 4:30p.m.; Friday, Noon - 8p.m.; Walk-in Office Hours, Wednesday 1 - 4p.m. and Friday, 4 - 8p.m. For Appointment 875-5095.

LANDFILL:

Monday, Tuesday, Friday, Saturday - 7a.m. to 3:30p.m.
 Sunday - Noon to 3:30p.m.
 Wednesday & Thursday - Closed

SENIOR MEAL SITE:

Monday through Friday 10a.m. to 2p.m., Pearson Road Center

ORGANIZATIONS:

ALCOHOLICS ANONYMOUS - Tuesday 8p.m., Alton Bay Community House
 AMERICAN LEGION - 2nd Monday 7p.m., Legion Hall
 AMERICAN LEGION AUXILIARY - 2nd Monday 7p.m., Legion Hall
 CUB SCOUT PACK 53 - Last Tuesday 6:30p.m., Legion Hall
 EASTERN STAR - 2nd Tuesday
 GARDEN CLUB - 4th Tuesday
 FLYING CLUB - 2nd Wednesday
 HAPPY HOBBY DOLL CLUB - 4th Friday 7p.m., Community House
 HISTORICAL SOCIETY - 3rd Tuesday April through October
 KNIGHTS OF COLUMBUS - 1st & 3rd Tuesday 7:30p.m., St. Joan of Arc Church Hall
 LIONS CLUB - 1st & 3rd Thursday 6:30p.m. Mama Rina's Restaurant, New Durham, September thru June
 MASONIC LODGE - 2nd Thursday
 PARENT TEACHER COMMUNITY ORGANIZATION - 3rd Wednesday 7p.m. Alton Central School
 ST. JOAN OF ARC LADIES GUILD - Last Thursday 7:30p.m. Church Hall
 SENIOR CITIZENS - 2nd Wednesday 10a.m., Pearson Road Center
 VFW - 3rd Monday 7:30p.m. American Legion Hall
 CALL 875-7300 TO UP-DATE THE ABOVE LISTINGS

- | | | |
|------|------|---|
| Sat. | 1 - | BASEBALL at Moultonboro, 1p.m.
SOFTBALL at Moultonboro (2), 1p.m. |
| Tue. | 4 - | TRACK at Kennett, 3:30p.m. |
| Wed. | 5 - | STORY HOUR: 3 to 5 Year Olds, Gilman Library, 10-11a.m.
BASEBALL vs. Moultonboro, 4p.m.
OLD HOME WEEK BINGO, American Legion Hall, 7p.m. |
| Thu. | 6 - | COMMUNITY SEMINAR - "Changing Times: Parenting the Early Adolescent, Alton School, 6:30p.m. |
| Fri. | 7 - | BINGO, American Legion Hall, 7p.m. |
| Sat. | 8 - | TRACK at Newfound Invitational
FLEA MARKET, American Legion Hall, 8a.m. - 3p.m.
SPAGHETTI SUPPER, Class of 1993, Sandy Point Restaurant, 5 - 8p.m. |
| Sun. | 9 - | MOTHER'S DAY |
| Tue. | 11 - | TRACK at Raymond, 3:30p.m.
BASEBALL vs. Epping, 4p.m.
SOFTBALL vs. Epping, 4p.m.
KINDERGARTEN PARENTS' NIGHT, Alton School, 7p.m. |
| Wed. | 12 - | STORY HOUR: 3 to 5 Year Olds, Gilman Library, 10-11a.m.
BINGO, American Legion Hall, 7p.m. |
| Thu. | 13 - | SPRING FLING, Alton School, 4 - 6:30p.m.
ELEMENTARY CONCERT, Alton School, 7p.m. |
| Fri. | 14 - | BINGO, American Legion Hall, 7p.m. |
| Sat. | 15 - | ARMED FORCES DAY
TRACK at Newfound, 9a.m.
BASEBALL vs. Calvary Christian (2), 10a.m.
SOFTBALL vs. Calvary Christian (2), 10a.m. |
| Mon. | 17 - | BASEBALL vs. Nute, 4p.m.
SOFTBALL vs. Nute, 4p.m. |
| Tue. | 18 - | TRACK at Kingswood, 3:30p.m.
VARIETY SHOW, Alton School, 7:30p.m. |
| Wed. | 19 - | STORY HOUR: 3 to 5 Year Olds, Gilman Library, 10-11a.m.
BASEBALL at Concord Christian, 4p.m.
SOFTBALL at Concord Christian, 4p.m.
BINGO, American Legion Hall, 7p.m. |
| Thu. | 20 - | IMMUNIZATION CLINIC, Alton School, 9-10a.m. |
| Fri. | 21 - | BASEBALL vs. Sunapee, 4p.m.
SOFTBALL vs. Sunapee, 4p.m.
BINGO, American Legion Hall, 7p.m. |
| Sat. | 22 - | TRACK Championships, 9a.m. |
| Mon. | 24 - | BASEBALL at Sunapee, 4p.m.
SOFTBALL at Sunapee, 4p.m. |
| Tue. | 25 - | SPRING LUNCHEON, Garden Club, Congregational Meeting House, 12:30p.m. |
| Wed. | 26 - | STORY HOUR: 3 to 5 Year Olds, Gilman Library, 10-11a.m.
BASEBALL at Nute, 4p.m.
SOFTBALL at Nute, 4p.m.
BINGO, American Legion Hall, 7p.m. |
| Fri. | 28 - | BASEBALL vs. Concord Christian, 4p.m.
SOFTBALL vs. Concord Christian, 4p.m.
BINGO, American Legion Hall, 7p.m. |
| Sat. | 29 - | TRACK at Class Meet
EMS OPEN HOUSE, Ambulance Building, 10a.m. - 2p.m. |
| Sun. | 30 - | MEMORIAL DAY PARADE, American Legion Hall, 2p.m. |
| Mon. | 31 - | MEMORIAL DAY |

Remove & Save

Classified Ads

Alton residents may place classified ads in Main Street each month. Ads are limited to non-commercial, private individuals who have items for sale, items wanted, free items, personals, or help wanted notices. The rate is \$1 for each ad. Main Street reserves the right to refuse any ad. Ads must be mailed with payment to P. O. Box 210, Alton Bay, 03810, by the 15th of the preceding month.

FOR SALE

14' Sears Aluminum Boat w/3.5hp Motor \$350, 875-5466

Truck Cap, Fiberglass, Excellent Condition, Fits Nissan Long Bed, \$150, Couch, Rust Color, \$250, Exercise Bike, \$20, 32 Used Ceramic Molds, \$100, 293-8597

New Medi-Lift Power Recliner (Multi-Position) Chair, \$350, 875-5466

Commodore 128D Built-In 1541 Disc Drive, Software, Magazines, Printer Interface, \$400, Commodore 64, 1541 Disc Drive, Power Supply, \$50, 293-8597

Gulbranson Piano, Baby Grand, Restored, Good Condition, \$1500, 875-5990

WANTED

Someone to do Gardening and Plant Flowers, 875-7581

14' - 18' Aluminum Canoe, Good Condition, 569-8080

Chambermaid, Part-Time, Saturdays Required, 875-5990

Commodore Monitor Model 1702, 875-7300

Room to Rent, Alton/Barnstead Area, Prefer Private Entrance But Not Necessary, References, Willing to Trade Work for Rent, 508-667-1409

Professional Child Care Director/Teacher now at home with own children, wishes to care for yours. Flexible Hours and Reasonable Rates, 875-7369

Donations toward Bus trip of NH Head Injury survivors to Wash. DC for National Rally in June Call Laurie 875-7371 (deductible)

PERSONAL

We wish to express our deepest appreciation to Officer Alan Ford and the squad members of the Alton Volunteer Ambulance Service for their prompt and efficient response to our recent need. We say it again - Alton is a wonderful place in which to reside.

Warren & Helen Harris

LEGION FLEA MARKET

American Legion Post #72 is sponsoring a Flea Market on Saturday, May 8, from 8a.m. to 3p.m. at the Legion Hall. Call 875-6881 or 875-5821 for information on table rentals.



CUB SCOUT FUND RAISER

Scout leaders Shirley Ford and William Holway express thanks to First NH Bank Manager Darlene Schmidt.

COFFEE AND DONUT SHUTTLE

By Shirley Ford

On April 3, the Cub Scouts held a fund raiser called the Coffee and Donut Shuttle. We planned to sell donated coffee and donuts to the fishermen. However, the weather was not with us. It was cold and damp and very few fishermen were along the river.

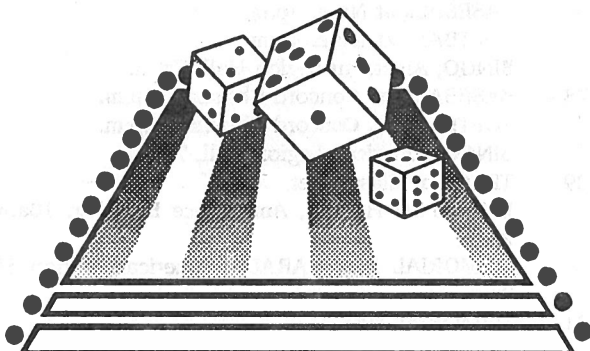
So, we improvised. We set up in front of the Alton Transfer Station and the New Durham Landfill. We also set up in front of the two banks in town and at the Post Office. The donuts sold well, the coffee had no covers (Maybe next year).

Despite the weather we did great! We exceeded our goal thanks to the efforts of the Scouts, leaders, parents and friends who participated. Thanks to the Fire Department for use of the station, to all the businesses and individuals who donated money or goods and particularly to Darlene Schmidt of First NH Bank who obtained donations of money and donuts within a few hours the day before the event. We would not have reached our goal without her efforts.

HISTORICAL SOCIETY

The Alton Historical Society will hold its May meeting on Tuesday, May 18, at 7:30p.m. at the Gilman Library. The program is to be announced.

Las Vegas Night



Memorial Day Weekend

Sat., May 29, 1993

American Legion Hall
Main Street, Alton

"Come Try Your Luck"

Public Invited

7 to Midnight

Admission \$2.00 Cash Prizes

OPEN BURNING RULES

By Daryl Czech

What to do....Who to call?

- Russ Jones - 875-7510
- Norm Barrett - 776-6301
- Irving Roberts - 569-2629
- Harold Clough - 293-7838
- Seldon Alden - 875-5058

What do these men have in common? They are the folks to contact for open burning permits. As of April 1 a permit was required for all open burning. Fires must be attended at all times and may only be kindled between the hours of 5p.m. and 9a.m.

With a permit and permission from the landowner, cooking fires may be kindled in fireplaces where they will not endanger woodlands.

Any expenses incurred in extinguishing any non-permit fires by the town will be paid by the person causing the problem.

Let's be safe, not sorry!

ALTON THESPIANS HONORED

The Apache Players, Alton Central School's theater group, was honored at the recent State Drama Festival at Plymouth State College. The Festival is sponsored by the New Hampshire Educational Theater Guild .

An acting award went to Justin Swain and the stage crew received an award for an on stage scene shift. Swain also was elected as the student representative to the Guild's Board of Directors.

Every young man starts out in life expecting to find a pot of gold at the end of the rainbow. By the time they reach middle age, most of them have at least found the pot.



Sherman H. Brown Plumbing

WATER SYSTEMS • HEATING SYSTEMS
BACKFLOW DEVICES

NH MASTERS LIC. #360
ME MASTER LIC. #02595
NHPI #555 WSPCC #0004
BACKFLOW DEVICE
TESTER #3820

*Call us for your
Plumbing needs!!*

24 HOUR SERVICE

P.O. Box 404
Alton, NH 03809

Phone:
(606) 875-7337

Senior Citizen Discount

McKenney Transportation



Auto
Care
Center

Auto & Truck Repair
Snow Plowing - Road Service



Off Rt. 28 At The
Alton/Barnstead Line

8-5 Mon - Sat
776-7931

Road Service / State Inspection

* Because additional service & parts are sometimes needed at an extra cost, we'll prepare an up front estimate!

WHEEL ALIGNMENT

- Check suspension parts for wear
- Set caster, camber and toe settings as needed



starting at
34⁹⁵

*Certain models/
parts extra.

NAPA Shock and Strut

SALE! Limited Lifetime
Warranty
Gas Charged Shocks and Struts for
most cars and light trucks.

Buy
**One, Get
the Second
FREE**



*Plus installation



*** Rock
Bottom
Tire Prices**

**THE QUALITY NAPA
PARTS WE INSTALL ARE
BACKED BY THE NAPA
NATIONAL WARRANTY
PROGRAM.***

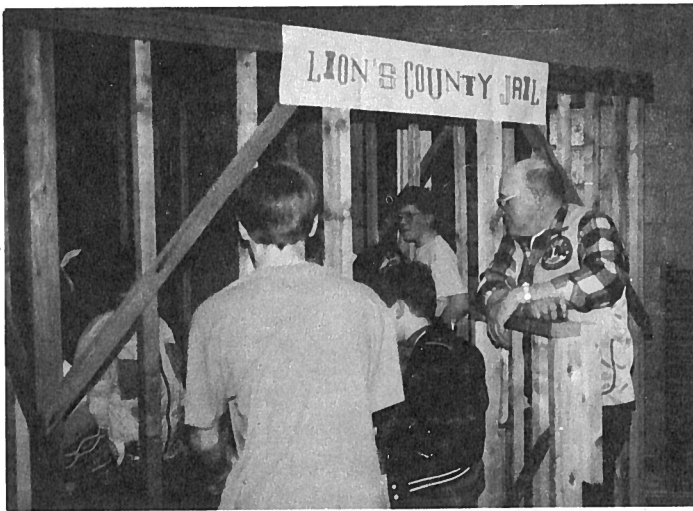
So, whether you're
driving across town
or across the
country, visit us
first—and travel
with confidence.



*Ask us for details.

All offers Expires May 31, 1993

Under Water / Recovery & Repair



LIONS COUNTY JAIL

One of the most popular attractions each year at the Penny Sale and Jamboree sponsored by the Alton-New Durham Lions Club is the Lions County Jail where folks can purchase an arrest warrant for a friend or relative to spend two minutes behind bars.

(603) 875-5480

FREIDA'S VARIETY DISCOUNT STORE

New Stock & Unusual Items

Alton Circle Route 28, South Alton, NH 03809

BUILDING EXCAVATION

Homes, Additions, Dormers,
Garages, Remodeling, Decks,
Gutters & Roofing
Land Clearing, Roadwork, Septic
Systems & Asphalt Driveways

EQUIPMENT RENTAL

Backhoe \$250./8 hr day
Dozer \$250./8 hr day
Excavator \$500/8 hr day
with operator

½ Day Rates for Senior Citizens

No Job too Big or Small!!

FREE ESTIMATES

L.L. BRASWELL CONSTRUCTION

875-5315

Fully insured, References Available
25 Years in Business

**OLD HOME WEEK CELEBRATION
SCHEDULED FOR 6 DAYS IN AUGUST**

The Town of Alton will be having an Old Home Week Celebration during the month of August. Events will be held on August 14, 15, 19, 20, 21, and 22.

The schedule will include a Road Rally, Sock Hop, Scavenger Hunt, Kids' Day, Chicken BBQ, Barbershoppers Concert, Las Vegas Night, Outdoor Drive-In Movie, Tailgate Party and Cruise Night with live band, Chili Contest, Parade, Block Party, Fireworks, Craft Fair, Pancake Breakfast, Family Day, Country Picnic, and much more.

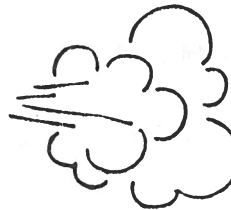
Community members interested in donating their time to assist with the committee are encouraged to contact the Parks and Recreation office (875-2161) for the next meeting date.

A membership drive also is being held to help raise money for Old Home Week activities. A \$5 donation will help the committee a great deal and will place your name in the program booklet. Just fill out the coupon below and mail to Old Home Week Committee, PO Box 913, Alton 03809.

Enclosed is a \$5 donation in support of Old Home Week. I would like my name printed to read

in the program booklet. Checks may be made payable to Old Home Week Committee.

GALE HILL MASONRY



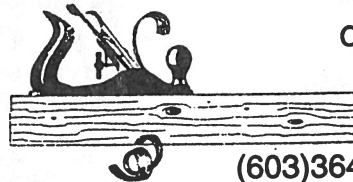
GARY OICKLE
875-3335

CHIMNEYS
FIREPLACES
HEARTHES

REPAIRS

BRICK - BLOCK - STONE
CULTURED STONE

JP BUILDERS



CUSTOM HOMES
&
REMODELING

(603)364-9404
after 6 PM 603-875-3027

Custom Decks
Finish Work
Additions

Fully Insured
Quality Guarantee
References Available

Jim Parandes P.O. Box 449, Alton Bay, NH 03810

ALBERT C. BURBANK HEADS ALTON SCHOOL BOARD

Albert C. Burbank, longtime Alton motel owner and retired Connecticut educator, is the newly elected chairman of the Alton School Board, succeeding Jack D. Henderson who has been named secretary of the Board. June D. Tanguay, a former chairman, was named vice chairman. In a separate election by the SAU 51 Board, Tanguay was elected chairman of that body.

Board assignments, recently announced by Chairman Burbank, include the following: Budget Committee Representative - Steve Parker with Henderson as alternate; Negotiations - Henderson and Parker; Delegate to the NH School Board Association - Henderson; Capital Improvements Committee Representative - Tanguay; Liaison to Selectmen - Burbank; Buildings and Grounds Committee - Tanguay, Pete Shibley and Parker; Vocational Educational Committee - Burbank and Parker; and Food Service - Shibley and Tanguay.

EARTH CARE

Certain biodegradable pesticides can help keep your garden clear of insect villains. Two of the safest are pyrethrum dust, which clobbers caterpillars and other soft-bodied insects and diatomaceous earth, which dehydrates pests.

MAIN STREET AVAILABLE BY SUBSCRIPTION

Main Street is mailed to all Alton residents free of charge by third-class mail.

Because of its third-class status, Main Street can not be forwarded to those away from home for a period of time. However, anyone who wants to receive this publication year-round with first-class delivery may do so by subscribing to Main Street for \$7.50 per year. This will insure receiving twelve issues mailed to your address.

Subscription requests should be sent to Main Street, Post Office Box 210, Alton Bay, NH 03810. Include your name, mailing address and a \$7.50 check payable to Voice of Alton.



Bebe Finethy
Main St., Alton, NH
875-HAIR

OPEN TUES.-SAT.
Evenings available

DISCOVER **NEXUS** **PAUL MITCHELL**
PROFESSIONAL SALON PRODUCTS

BRUCE K. JOHNSON
Attorney at Law

HOMESTEAD PLACE, JCTS. RTE. 11 & 28

(603) 875-6131 P.O. Box 817
Alton, N.H. 03809

Karen's Country Kitchen
Main St., Alton

Open 7 Days
6 AM - 7 PM

Family Dining • Daily Specials
Take Out Available

875-6544



OSGOOD PHARMACY

Prescription Specialists

FARMINGTON, N.H.

TEL. 755-3771 & 755-2440

"FRIENDLY PERSONALIZED SERVICE"

FAX # 603-755-9372

Spring Cleaning Sale!

Used PC's

Tandy PC w/monitor & Hard disk	\$100
Packard Bell 386sx w/floppy & KB	\$250
Sharp Portable w/Hard disk, Printer & case - Good for Student	\$400

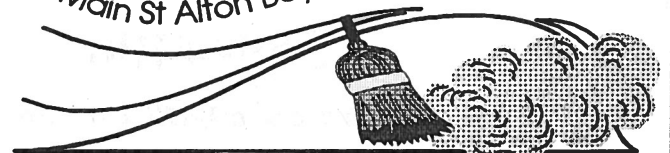
Software

MS DOS 6.0 Upgrade \$49
Norton Anti Virus 2.1-free updates monthly \$89
MS Windows 3.1 \$45
MOST OTHER SOFTWARE AVAILABLE AT

Mail Order Prices

Make Us Your Source!

Robert Boyce & Co. 875-6066
Main St Alton Bay 569-6996



CONCORD CORNER

By Alice Ziegra, State Representative

NEW HAMPSHIRE IS NUMBER ONE

I would like to share a gratifying report about New Hampshire's children. "Kid's Count Data Book", which measures ten indicators of child and adolescent health, education, economic and social well-being and family stability, finds that our children are number one nationally in overall well-being. Here are a few individual findings.

1. Nationally children are not finishing school on time in 1990 as compared with 1985.

2. One-fourth of those who contract a sexually transmitted disease are adolescents in high school.

3. Minority children are still more at risk and have more hardships than American children as a whole. This predisposes many problem situations as these children marry and have families.

4. Because of more access and attention to private care, the 1990 infant mortality rate of 9.2 per 1000 live births is the lowest ever recorded in the United States. Neonatal care is more sophisticated and more babies are now living.

5. The death rate for children one to 14 is 10% lower than in 1985, 30.5 children per 100,000 children, a record low.

6. In New Hampshire, the rate increase for teens not in school, not in the labor force and not in the military was up to 49% from 1986 to 1991. It is not surprising that the national arrest rate of teenagers increased 58% from 1986 to 1991. New Hampshire's rate decreased during this period. The percent of our children in poverty has dropped 1% to 7.1% in 15 years.

Interestingly, poverty rates in the United States are the same today as 20 years ago but children are more apt to be the "poor" as opposed to those over 65.

When these indicators are tabulated and trends discerned, plans to reverse the adverse trends can be evolved. We can be proud that New Hampshire is number one in national ranking in overall well-being of children. Our poorest showing was in school dropouts and arrest rates. This must be addressed. We could use the resources we have and spend "smarter".

In Concord, many policy bills have passed the Senate and the House. Work is focusing now on finalizing the budget for the next two years. Revenue estimates continue to be better than anticipated. Hopefully, some badly needed programs can be funded.

I will be at the Alton Town Hall on Monday, May 3, from 3 to 4p.m. Meanwhile call me at 875-2151.

Telephone 603-875-6151



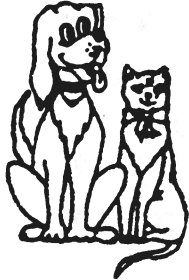
DENISE MERRITT, M.D., P.C.

GENE B. ANDES, M.D.

Expanded Hours

8 MAIN STREET, ALTON, N.H. 03809

PROFESSIONAL DOG & CAT GROOMING



- FLEA TREATMENTS
- NAILS AND EARS
- CLIPPING
- BATHING

CALL
LYNDA CLIFFORD

569-6362

HAYES RD., EAST ALTON, NH

WESTON AUTO BODY, INC.

**Introducing Our
New Services**

- Complete Auto Reconditioning
- Detailing
- Carpet Dying & Much More
- Free Pickup and Return



Don't Wait; Call for an Appointment Today

569-4400

NOTE: Save 10% with this ad (Expires 6/1/93)

OPEN

Mon - Fri 8-5

Sat 8-1

Also 24 hr. Towing

FIRST SUMMER DAY CAMP PLANNED BY REC DEPARTMENT

The Parks and Recreation Department is sponsoring its first Summer Day Camp for youngsters in grades two through six.

The one-week day camp will be held at the Alton Bay Community Center July 12-16 from 9a.m. to 4p.m.

Program activities include cooperative games, skits, safety tips, culture day, exercise, games and more! Registration will begin Wednesday, May 19, and is limited to 30 participants.

Early registration is recommended to guarantee your spot. For more information or to register by phone, call the Parks and Recreation Department at 875-2161.

SUBMIT YOUR NEWS

Information may be submitted in writing to Main Street about special events sponsored by Alton organizations, club meetings, and news of interest to the general public.

Send any material to P. O. Box 210, Alton Bay, 03810, by the 15th of each month for the following month's issue.

Main Street reserves the right to limit or edit all material. For additional information call 875-7300.

If at first you succeed, hide your astonishment.

For Fast Neighborhood Service Call
S.F. ELECTRIC
Tel. 776-6172

- New Construction
- Mobile/Modular Homes
- Service Upgrades
- Older Homes
- Additions
- Small Jobs

Stockbridge Corner Road
Alton, New Hampshire 03809

NH Master Lic #7701 ME Master Lic. #MS60010902
Low Rates Free Estimates Safety Inspections

Senior Citizens Discounts

PROMPT PROFESSIONAL SERVICE 24 Hour Emergency Service

OIL HEAT SERVICE
Reliable • Dependable

Howard Towne 569-5891
Towne Heating Co. East Alton

HAMEL
WOLFEBORO

CALL US for your
Summer and Year
Round Rental Listings

ALTON BAY OFFICE

Route 11 Phone
Alton Bay NH 03810-0314 (603) 875-6051



AMERICAN LEGION SPONSORS BINGO TO BENEFIT OLD HOME WEEK

American Legion Post #72 will be hosting a special bingo on Wednesday, May 5, at 7p.m. with all proceeds donated to Old Home Week.

The event is one of the many fund raising efforts by community organizations and businesses to help with the Old Home Week festivities such as the fireworks display.

People with open minds always have hearts to match.

Dean L. Finethy & Sons
CARPENTERS - BUILDERS

Custom Made Kitchen
Cab. & Vanity & Counter Tops

776-4631

NAPA AUTO PARTS

NAPA AUTO PARTS - FARMINGTON

WE CARRY A FULL LINE
OF AUTO PARTS & ACCESSORIES
INCLUDING...

- Parts for Imports
- Parts for Trucks
- Paint & Supplies
- Brand Names You Rely On

ASK ABOUT NAPA'S NATIONAL WARRANTY PROGRAM

NAPA AUTO PARTS
Route 11 - Farmington
755-2264 • 800-734-2269
Mon-Fri 6 am to 5:30 pm
Sat 6 am to 5 pm • Sun 9 am - 1 pm



EASTER EGG HUNT

Youngsters rush from one hiding place to another in search of prizes at the recent Easter Egg Hunt at Town Hall sponsored by the Parks and Recreation Department.

ALTON OUTDOORS

By Jack Miller

A TRANSITION MONTH

May is a transition month, the month that is between spring and summer. This year spring seems a little late. With Alton Bay barely free of ice at this writing (Mid-April), it looks as if the first of this month should provide prime salmon fishing since the Big Lake should just be ice free. The salmon are of good size this year thanks to four and a half inch smelt found in their stomachs.

About the time the salmon start to move down in the water, the smallmouth bass start to move up. You may use artificial lures only until May 14 and the limit is two bass. From May 15 to June 16, any bass caught must be released. This is the time they are on their beds protecting their young. Be sure to check the specific regulations.

There are other opportunities available this month as the water warms. White perch show up in the Bay now but are hard to find. The persistent angler can catch these perch until their arms ache if a school is found.

For the hunter, May 4 - 31 is the turkey season. The 1992 turkey season provided 320 turkeys, some up to 24 pounds, with four being taken right in Belknap County.

The deadline for applying for the 1993 moose hunting lottery is May 28. The fee to enter is \$10 and the season will take place October 16 -24. Good Luck!

For all you kids ages 3 - 12, Saturday, May 15, marks the Annual Kids' Fishing Derby held at the Club Pond in New Durham by the Farmington Fish and Game Club. It's free of charge.

Get outside in the great Alton Outdoors!

KINDERGARTEN PARENTS' NIGHT

Parents of children who will be 5 years old by September 30, 1993, are invited to attend Kindergarten Parents' Night on Tuesday, May 11, at 7p.m. at the Alton Central School. The Kindergarten Visitation Day scheduled for Monday, May 24, will be explained at that time.

DOWNING REAL ESTATE

Alton Bay, New Hampshire 03810
1-603-875-2232



ALTON
3 bedroom Ranch home. Just a short walk to schools and stores. Water frontage on Merrymeeting River. Private setting. Priced to sell
\$85,000



Post Office Box 281
Alton Bay, NH 03810

Complete Solid Waste Collection and Disposal Systems

- Residential Collection
- Containerized Service
- Portable Restrooms
- Recycling

MIXED RECYCLABLE PICK UP?

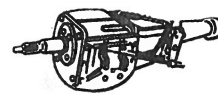
All Recyclables can be put out in one container beside your regular waste. No need to segregate with AMS FOR DETAILS

CALL 875-2711

Did You Know
We Pick Up
Most Everything?



STEVE / PAT



ACE TRANSMISSIONS

Specializing in Computer Control Systems
Automatics • Standards • Clutches • Transfer Cases
Repaired or Rebuilt



Alton, NH

(603) 875-5529



Trees Company

COMPLETE TREE SERVICE - STUMP REMOVAL - LANDSCAPING
QUALITY & DEPENDABILITY WITH LOW PRICES

KEVIN HOPPER

REGISTERED ARBORIST
B.S. FORESTRY

FULLY INSURED
FREE ESTIMATES

ALTON, NH

(603) 776-TREE
(603) 776-8733



**NORTH AMERICAN SOCCER CAMP
RETURNING TO ALTON**

North American Soccer will be conducting a soccer camp in Alton this summer. All youngsters ages 7-18 are invited to register for the camp which will be held August 2-6 from 9a.m. to noon.

The fee is \$86 per participant which includes the instruction, a soccer ball and a t-shirt. Interested participants may contact the Parks and Recreation Department to register. A \$30 non-refundable deposit is required and registration ends June 4.

EARTH CARE

Repel the beetles, gnats and worms that invade your garden by planting friendly flowers such as marigolds. These vegetable allies can help protect your plants without leaving chemical residues in the soil or on your produce

**SPRING HAVEN
GARDEN SERVICE**

Garden Design • Installation • Maintenance
Pruning • Landscape Reconstruction

Lori Coffey
W. Alton
293-2048

Business
Residential
FREE ESTIMATES

TOWN & COUNTRY TRAVEL



Reserve Space Early
on Our

Summer Motorcoach Trips

- June 7-9 Atlantic City Showboat Casino, incl: R/T motorcoach, hotel & 10 coins.
- July 18 Whalewatch Gloucester, MA incl: R/T Motorcoach 4 hr whalewatch & refreshments.
- Aug 15 Newport Mansions incl: R/T motorcoach, adm to Green Animals, Hammersmith Farm & Belcourt Castle w/afternoon tea & our picnic lunch.
- Sept 8-10 Atlantic City Bally's Park Place, incl: R/T Motorcoach, hotel & \$30 coins

Call Today for more details!!

✓ Our New Location 524-4041
43 Gilford East Drive, Gilford, NH 1-800-572-2540

GARDEN CLUB SPRING LUNCHEON

On Tuesday, May 25, the Alton Garden Club will hold its Annual Spring Luncheon for members and guests at 12:30p.m. at the Congregational Meeting House. There will be an exchange of perennials and house plants.

Hostesses are Co-Chairmen Marion Davis and Laura Whittmore, assisted by Winifred Alden, Leigh Crawford, Daryl Czech, Virginia Dore, Doris Gray, Pauline Harvey, Sharon Howard, and Shirley Lane.

ALL ABOUT ALTON: Five Indian tribes camped at Alton Bay in the summer. A marker telling the names of the tribes can be found in front of Downing Real Estate.

**APARTMENT
FOR RENT**

Fantastic Mountain Views

Apartments starting at \$325/Mo.
1 Bedroom Apt Available - \$350/Mo (incl. heat & elect.)

FERNCROFT FARM

New Durham Road - Alton
783-4446

SCUBA INSTRUCTION
Equipment Sales & Service
Worldwide Travel Packages

**SPECIALIZING
IN ALL
WATER
SPORTS**

DIVE WINNIPESAUKEE
Your Sporting Goods Headquarters!

- SALVAGE
- MOORINGS
- COMMERCIAL
- ICE DIVE & RECOVERY

P.O. BOX 2198, MAIN STREET
WOLFEBORO, NH 03894
(603) 569-8080 - 776-7931



**M & M
Sports Cards**

BUY • SELL • TRADE

I Buy Individual Cards
or Entire Collections

875-5375

Ask for Mike



AMBULANCE SERVICE MEMBERS RECEIVE ADVANCED TRAINING

Eleven members of the Alton Volunteer Ambulance Service recently furthered their training in a variety of professional courses.

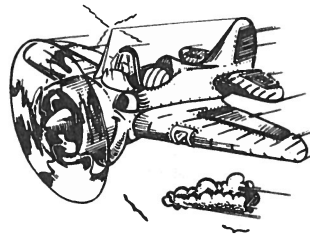
Richard Brown, Ed Consentino, Eric Elliott, Stark Liedtke, and Scott Williams have completed an advanced airway class.

Four members have completed an EMT course and are awaiting their final grade. They are Clifford Brown, Dexter Brown, Annette Elliott, and Hope Elliott.

Kirsten Brown was recently certified in CPR and Advanced First Aid while Judy Fisichelli is enrolled in a first responder course.

5 YEARS AGO.....

.....new parking regulations and boat launch fees were adopted by the Selectmen to alleviate car and trailer congestion in Alton Bay.....Doris Selfridge was elected president of the Lioness Club.....Dawn Newlin won first place in the School Science Fair with her display of "Genetic Mutations".....Voice of Alton, Inc., publisher of Main Street presented the Boston Post Cane display case to Town Hall..... The Alton School began collecting pennies to raise funds for new playground equipment.....A.W. "Bill" Heidtke and Stanley Olender were marshals of the Memorial Day parade.



ALTON STUDENTS TO PARTICIPATE IN LACONIA AIRPORT AVIATION DAY

Student members of the Young Astronauts Chapter at Alton Central School will have a display at the 1993 Laconia Airport Aviation Day, Saturday, May 29. The gates open at 8a.m.

This is the third year the event has been held and this year's show will have aircraft on display, paraplanes, RC models, scenic rides, introductory flight lessons, raffles, refreshments and an airshow by Northeast Airshows. Also, the Gilford Fire Department will present fire fighting and rescue demonstrations.

Visitors will be asked to make a donation of \$2 for adults and \$1 for children.

Sandy Point Beach Resort

Alton Bay, N.H.

Motels, Cottages, Restaurant, Docking
daily - weekly - seasonal rentals

Open May 1st to Mid October

603-875-6000

SANDY POINT RESTAURANT

on Route 11 in Alton Bay

OPEN May 14th
OFF SEASON HOURS

For Reservations call

875-6001

BLUE-JAY MINIATURE GOLF

Arcade & Do-Nut Shop

GOLF & ARCADE
OPEN MAY 29
WEEKENDS



DO-NUT SHOP OPEN MAY 30

Route 11 in Alton Bay

JOE FORSYTHE

MASTER ELECTRICIAN
PROPERTY MAINTENANCE

REASONABLE RATES
LICENSED AND INSURED

875-4888

JOE FORSYTHE

LIC. #8903



Main Street

Printed on 100% Recycled Paper

Bulk Rate
U.S. Postage
PAID
Permit No.2
Alton Bay, NH

CAR - RT SORT
POSTAL CUSTOMER