








- 
TEMPERATURE DATA LOGGER
 Stores over 1,000,000 readings from -40 °F to +257 °F
- 
NO SOFTWARE REQUIRED
 Plug and play on PC and MAC
- 
CALIBRATED DIGITAL PROBES
 Avoid data loss due to calibration downtime
- 
CONFIGURABLE ALARMS
 Audible and visual alarm notification
- 
DATA-RICH DISPLAY
 All the information you need, at a glance

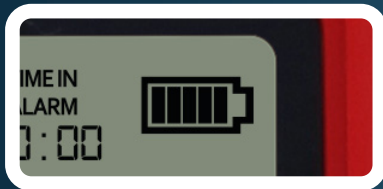
SIMPLIFY TEMPERATURE DATA LOGGING WITH VFC 311-USB

Experience effortless environmental monitoring with the VFC 311-USB. Simply connect the device with a USB cable, configure it using your web browser, and enjoy customizable logging intervals, alarms, and data analysis without the need for additional software or internet access.

This VFC 311-STP features smart probe technology incorporating digital circuitry allowing for easy calibration of the probe, with simple probe swap out capability.

The onboard display shows users at-a-glance the condition of the device, with current, minimum and maximum temperature readings, audit marks as well as alarm and time spent in alarm notification.

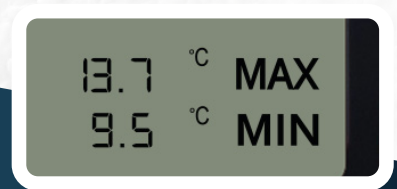
DISPLAY INFORMATION



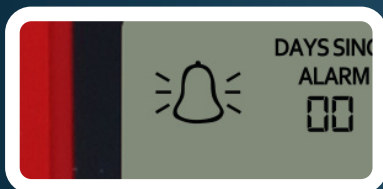
BATTERY STATUS



TOTAL TIME IN ALARM



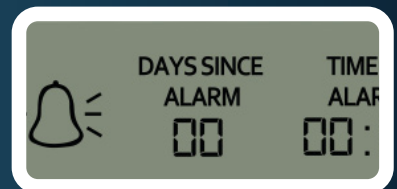
MAXIMUM AND MINIMUM READINGS SINCE LAST AUDIT



ALARM INDICATOR



CURRENT TEMPERATURE



DAYS SINCE LAST ALARM

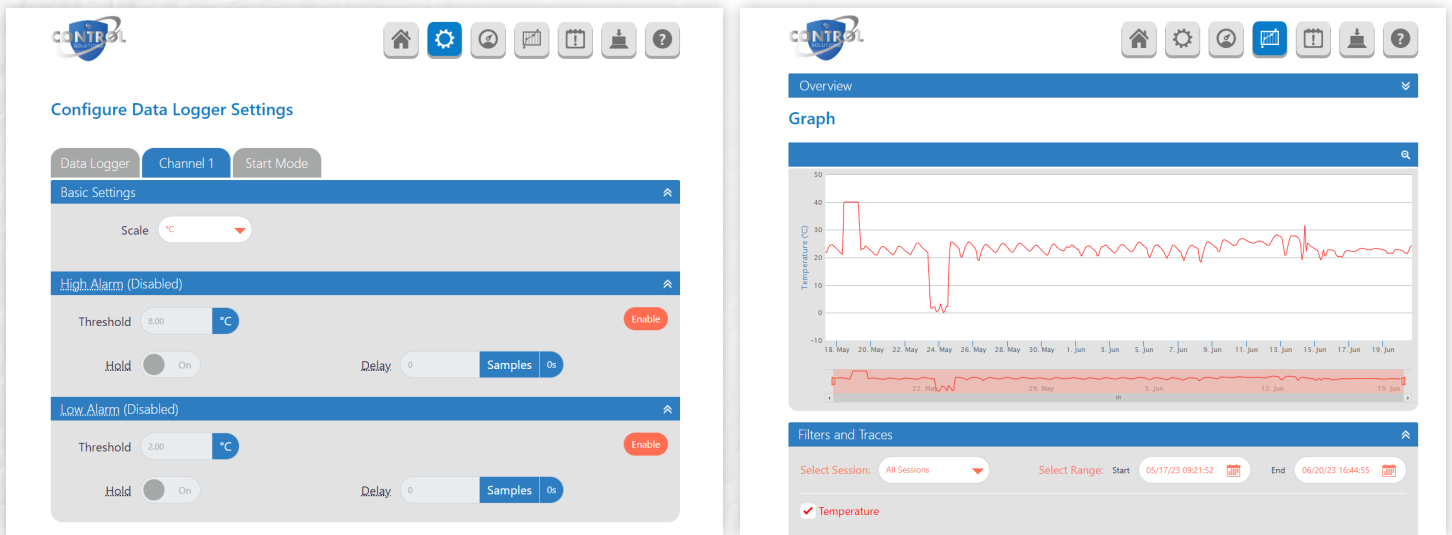
NO SOFTWARE TO INSTALL

All the software needed to configure your VFC 311-USB, and view and analyze the data it logs, is contained within the product itself. Just connect the logger to your PC or Mac with a USB cable, open any web browser, and in the address bar type **"http://vfc.local"**. No internet connection is needed, and you can save this address in your bookmarks or favorites for fast access.

The interface is easy to use and allows the following parameters to be configured:

- Logger and channel names
- Measurement units
- Logging rate and start mode
- Up to 16 separate alarms (high/low/pre-alarm/cumulative) with thresholds, delay and hold
- Display and LED indicator modes

Once the logger is running, you can plug it back into your computer and see the latest data, device status and the event log. You can also choose to stop the logger and change the configuration, or just let it continue logging.



SPECIFICATIONS

	Minimum	Typical	Maximum	Unit
Logging rate	10 seconds to 24 hours, user selectable			
Start modes	Immediate, push to start, delayed start, parameter triggered			
Memory capacity	Over 1,000,000 total readings			
Battery life*		1		Year
USB supply voltage (@500mA)	4.5	5.0	5.5	Vdc
Operating temperature range	-20 (-4)		+60 (+140)	°C (°F)
Logging period (user configurable)	10 sec	10 min	12 hrs	
Temperature measurement range	-40 (-40)		+125 (+257)	°C (°F)
Temperature measurement resolution		.1 (.2)		°C (°F)
Temperature display resolution		.1		
Temperature accuracy*		±0.5/±0.9		°C (°F)
IP Rating	Logger IP42, Probe IP67 (Bung fully inserted, not permanently powered, probe connector fitted and fully inserted, device mounted vertically.)			
Dimensions	82 x 70 x 36mm (3.22 x 2.75 x 1.41")			

ACCESSORIES

EL-P-TPX+	Replacement High-Accuracy Calibratable Thermistor Probe
PSU-5VDC-USB-USA	USB Mains Power Adapter for USA
PSU USB-UK	USB Mains Power Adapter for UK
PSU USB-EU	USB Mains Power Adapter for EU

INCLUDED IN THE BOX

VFC-311-USB	High-Accuracy Data Logger with Calibratable Thermistor Probe
EL-WIFI WALL BRACKET	Wall Mounting Bracket for EL-WiFi Sensors
CABLE USB A-MICRO B	USB Type A to Micro B

* Accuracy may be affected when using a non-approved power supply to charge or permanently power the VFC 311-USB

